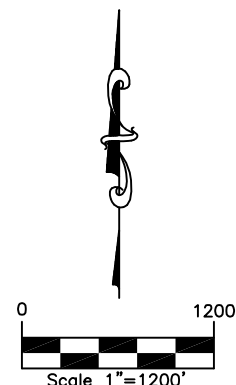
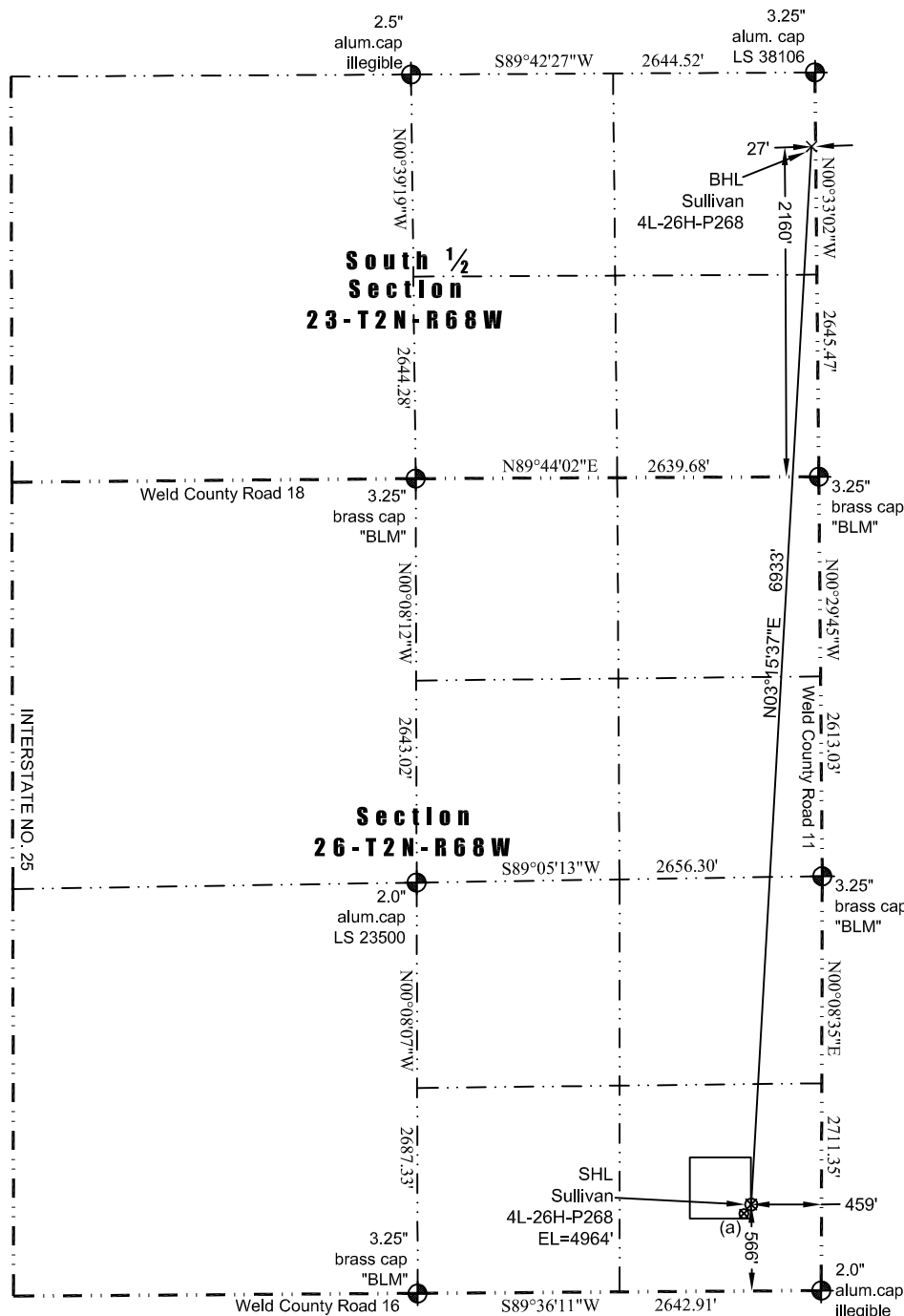




# WELL LOCATION CERTIFICATE

THIS MAP DOES NOT REPRESENT A BOUNDARY SURVEY

Washburn Land Surveying  
www.WashburnSurveying.com  
970-232-9645



**LEGEND**  
◆ - found survey monument  
(C) - calculated dimension

(a) Existing Well Data:  
Sullivan 44-26  
Latitude: N 40.103812°  
Longitude: W 104.962807°  
FSL: 556'  
FEL: 514'  
ELEV: 4964'  
PDOP: 1.8

Proposed Surface Hole Data:  
Latitude: N 40.103838° (BHL: 40.122832°)  
Longitude: W 104.962611° (BHL: 104.961051°)  
PDOP: 1.5

Nearest:  
Building: 583' northeast  
Building Unit: 618' northeast  
Above Ground Utility: 390 east  
Public Road: 440' east  
Railroad: +5,280'  
Property Line: 274' northwest  
Well Window: SHL is 2' outside  
Existing Well: Sullivan 44-26; 56' southwest  
High Occupancy Building Unit: 3,070 northwest

In accordance with a request from Jay Knutson of EnCana Oil & Gas (USA) Inc., Washburn Land Surveying, LLC has determined the location of the **Sullivan 4L-26H-P268** well site to be SHL: 566' FSL and 459' FEL, (BHL: 2160' FSL and 27' FEL), as measured at ninety (90) degrees from the section lines of Section 23 and Section 26, Township 2 North, Range 68 West of the 6th Principal Meridian, Weld County Colorado.

#### Notes:

- 1) Bearings and distances based on NAD 83 Colorado North State Plane Coordinate, using RTK GPS observations taken 7/7/14 by operator Ryan Christi.
- 2) Conversion factor to ground (1.0002744738).
- 3) Elevations based on NAVD 88 GPS heights and Geoid 2009 corrections.
- 4) See Location Drawing for visible improvements within 500 feet of Pad Site.
- 5) The surface use is a cultivated field.

**NOTICE:** According to Colorado law you must commence any legal action based upon any defect in this W.L.C. within three years after you first discover such defect. In no event may any action based upon any defect in this W.L.C. be commenced more than ten years from this said date of the certification shown hereon.

I hereby certify that this Well Location Certificate was prepared by me or under my direct supervision on 7/31/2014 for and on behalf of EnCana Oil & Gas (USA) Inc. That it is not a Land Survey Plat or an Improvement Survey Plat and that it is not to be relied upon for establishment of fences, buildings, or other future improvement lines.

John Robert McGeehee LSR36219  
Well: Sullivan 4L-26H-P268 WLC