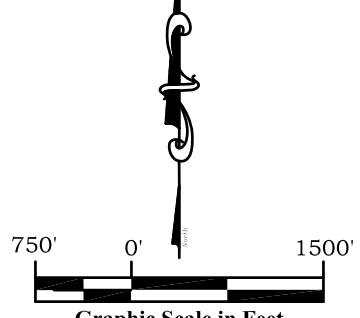


**Note:**  
 The measurement for determining any Designated Setback Location shall be made from the center of the Well nearest any Building Unit to the nearest wall or corner of such Building Unit.

Building	-	440'
Building Unit	-	440'
HOBUs	-	1556'
DOAA	-	N/A
Public Road	-	935'
Above Grnd Util.	-	955'
Railroad	-	5280'+
Property Line	-	218'

Current Surface Land Use :  
 Range Land



**Legend**

- ◊ - Field Surveyed Section Corner
- ◆ - Field Surveyed Quarter Corner
- ⊙ - Calculated Section Corner Location
- ⊕ - Field Surveyed 1/6 Corner

**Notes:**

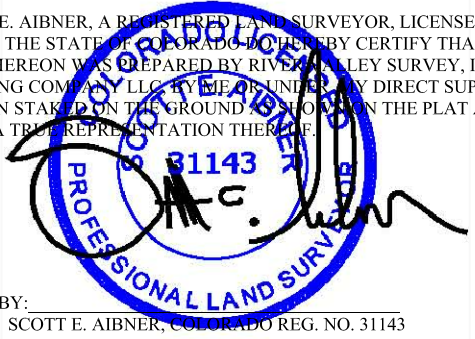
1. LATITUDE AND LONGITUDE COORDINATES ARE DIFFERENTIALLY CORRECTED AND BASED ON PUBLISHED NGS CONTROL STATION "WDP-5". SYSTEM: UTM ZONE: 13 NORTH DATUM: NAD 1983 (CONUS)
2. ELEVATIONS ARE BASED ON NAVD OF 1983.
3. ALL BOTTOM AND TOP HOLE LOCATIONS ARE MEASURED 90 DEGREES FROM SECTION LINE.
4. USGS QUADRANGLE MAP "PARACHUTE".
5. CURRENT SURFACE LAND USE: RANGE LAND.
6. PDOP AT THE TIME OF LOCATION OF SURFACE WELL = 1.2
7. GPS OPERATOR: P. HOFFMANN

**Surface: 43B-18-07-95**  
 1704' FSL  
 1107' FWL  
 Gnd El= 5513  
 Pad El= 5519  
**NAD83**  
 Lat: 39.435124614°N  
 Long: 108.026474675°W

**Bottom: 43B-18-07-95**  
 2109' FSL  
 660' FEL  
**NAD83**  
 Lat: 39.436212336°N  
 Long: 108.032745374°W

**SURVEYOR'S CERTIFICATE**

I, SCOTT E. AIBNER, A REGISTERED LAND SURVEYOR, LICENSED UNDER THE LAWS OF THE STATE OF COLORADO DO HEREBY CERTIFY THAT THE SURVEY SHOWN HEREON WAS PREPARED BY RIVER VALLEY SURVEY, INC., FOR URSA OPERATING COMPANY, LLC BY ME OR UNDER MY DIRECT SUPERVISION AND HAS BEEN STAKED ON THE GROUND AND SHOWN ON THE PLAT AND THAT THIS PLAT IS A TRUE REPRESENTATION THEREOF.



BY: SCOTT E. AIBNER, COLORADO REG. NO. 31143

**Prepared For: Ursa Operating Company LLC**  
**Proposed Yater 43B-18-07-95 Well, Surface Situate in The NW 1/4 SW 1/4 Section 17, Township 7 South, Range 95 West of the 6 th. Principal Meridian, County of Garfield, State of Colorado.**



**River Valley Survey, Inc.**  
 110 East 3rd. Street, Suite 213  
 Rifle, Colorado 81650  
 Ph: 970-379-7846

Project: RVS 06001-60	
Field Date: 9-26-14	Scale: 1"= 1500'
Date: 11-07-14	Sheet: 1 of 1

**303.a Form 2**  
**Yater Pad**  
**Yater 43B-18-07-95**  
 Section 18, Township 7 South, Range 95 West