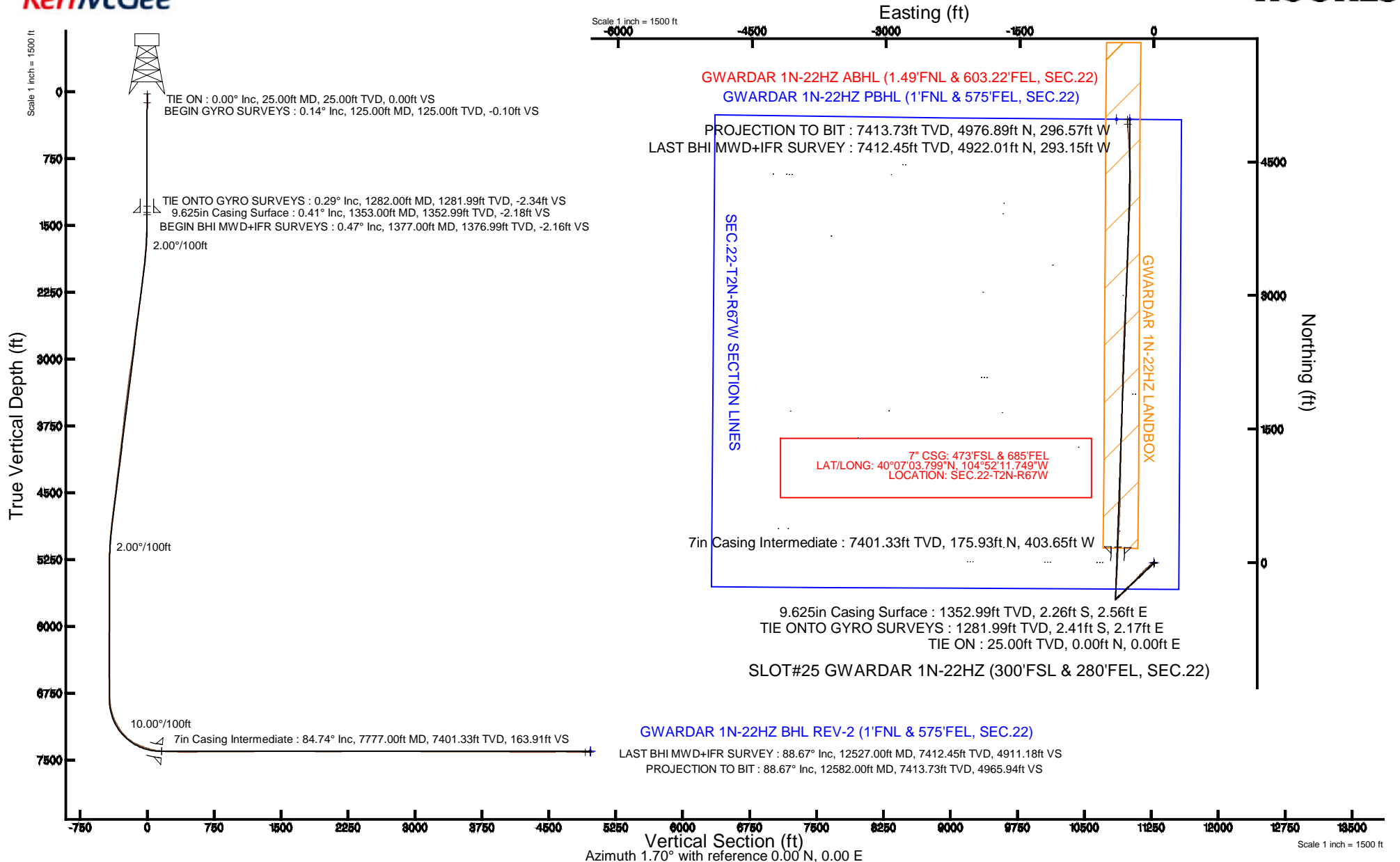


KERR-MCGEE OIL & GAS ONSHORE LP

Location: COLORADO Slot: SLOT#25 GWARDAR 1N-22HZ (300'FSL & 280'FEL, SEC.22)
 Field: WELD COUNTY (KERR MCGEE) Well: GWARDAR 1N-22HZ
 Facility: SEC.22-T2N-R67W Wellbore: GWARDAR 1N-22HZ PWB

Plot reference wellpath is GWARDAR 1N-22HZ (REV-A.0) PWP

True vertical depths are referenced to H&P 307 (25KB) (RKB)	Grid System: NAD83 / Lambert Colorado SP, Northern Zone (501), US feet
Measured depths are referenced to H&P 307 (25KB) (RKB)	North Reference: True north
H&P 307 (25KB) (RKB) to Mean Sea Level: 5003 feet	Scale: True distance
Mean Sea Level to Mud line (At Slot: SLOT#25 GWARDAR 1N-22HZ (300'FSL & 280'FEL, SEC.22)): 0 feet	Depths are in feet
Coordinates are in feet referenced to Slot	Created by: robiale01 on 9/25/2014



REFERENCE WELLPATH IDENTIFICATION			
Operator	KERR-MCGEE OIL & GAS ONSHORE LP	Slot	SLOT#25 GWARDAR 1N-22HZ (300'FSL & 280'FEL, SEC.22)
Area	COLORADO	Well	GWARDAR 1N-22HZ
Field	WELD COUNTY (KERR MCGEE)	Wellbore	GWARDAR 1N-22HZ AWB
Facility	SEC.22-T2N-R67W		

REPORT SETUP INFORMATION			
Projection System	NAD83 / Lambert Colorado SP, Northern Zone (501), US feet	Software System	WellArchitect® 4.0.0
North Reference	True	User	Robiale01
Scale	0.99996	Report Generated	9/24/2014 at 4:30:06 PM
Convergence at slot	n/a	Database/Source file	WellArchitectDB/GWARDAR_1N-22HZ_AWB.xml

WELLPATH LOCATION						
	Local coordinates		Grid coordinates		Geographic coordinates	
	North[ft]	East[ft]	Easting[US ft]	Northing[US ft]	Latitude	Longitude
Slot Location	-4466.90	2813.63	3176615.01	1286183.07	40°07'02.060"N	104°52'06.553"W
Facility Reference Pt			3173770.27	1290629.95	40°07'46.204"N	104°52'42.769"W
Field Reference Pt			3197771.84	1268891.29	40°04'09.600"N	104°47'36.000"W

WELLPATH DATUM			
Calculation method	Minimum curvature	H&P 307 (25'KB) (RKB) to Facility Vertical Datum	5003.00ft
Horizontal Reference Pt	Slot	H&P 307 (25'KB) (RKB) to Mean Sea Level	5003.00ft
Vertical Reference Pt	H&P 307 (25'KB) (RKB)	H&P 307 (25'KB) (RKB) to Mud Line at Slot (SLOT#25 GWARDAR 1N-22HZ (300'FSL & 280'FEL, SEC.22))	5003.00ft
MD Reference Pt	H&P 307 (25'KB) (RKB)	Section Origin	N 0.00, E 0.00 ft
Field Vertical Reference	Mean Sea Level	Section Azimuth	356.59°

REFERENCE WELLPATH IDENTIFICATION			
Operator	KERR-MCGEE OIL & GAS ONSHORE LP	Slot	SLOT#25 WARDAR 1N-22HZ (300'FSL & 280'FEL, SEC.22)
Area	COLORADO	Well	WARDAR 1N-22HZ
Field	WELD COUNTY (KERR MCGEE)	Wellbore	WARDAR 1N-22HZ AWB
Facility	SEC.22-T2N-R67W		

WELLPATH DATA (132 stations) † = interpolated/extrapolated station										
MD [ft]	Inclination [°]	Azimuth [°]	TVD [ft]	Vert Sect [ft]	North [ft]	East [ft]	Latitude	Longitude	DLS [°/100ft]	Comments
0.00†	0.000	150.650	0.00	0.00	0.00	0.00	40°07'02.060"N	104°52'06.553"W	0.00	
25.00	0.000	150.650	25.00	0.00	0.00	0.00	40°07'02.060"N	104°52'06.553"W	0.00	TIE ON
125.00	0.140	150.650	125.00	-0.11	-0.11	0.06	40°07'02.059"N	104°52'06.552"W	0.14	BEGIN GYRO SURVEYS
225.00	0.360	161.020	225.00	-0.52	-0.51	0.22	40°07'02.055"N	104°52'06.550"W	0.22	
325.00	0.300	165.690	325.00	-1.08	-1.06	0.39	40°07'02.050"N	104°52'06.548"W	0.07	
425.00	0.180	152.410	425.00	-1.48	-1.45	0.53	40°07'02.046"N	104°52'06.546"W	0.13	
525.00	0.320	196.920	525.00	-1.89	-1.86	0.52	40°07'02.042"N	104°52'06.546"W	0.23	
625.00	0.190	159.740	624.99	-2.31	-2.28	0.49	40°07'02.037"N	104°52'06.547"W	0.20	
725.00	0.220	127.480	724.99	-2.59	-2.56	0.70	40°07'02.035"N	104°52'06.544"W	0.12	
825.00	0.110	186.650	824.99	-2.81	-2.77	0.84	40°07'02.033"N	104°52'06.542"W	0.19	
925.00	0.170	159.800	924.99	-3.05	-3.00	0.89	40°07'02.030"N	104°52'06.542"W	0.09	
1025.00	0.160	130.830	1024.99	-3.29	-3.23	1.04	40°07'02.028"N	104°52'06.540"W	0.08	
1125.00	0.280	51.600	1124.99	-3.25	-3.17	1.34	40°07'02.029"N	104°52'06.536"W	0.30	
1225.00	0.540	45.380	1224.99	-2.80	-2.69	1.87	40°07'02.033"N	104°52'06.529"W	0.26	
1282.00	0.290	50.050	1281.99	-2.53	-2.41	2.17	40°07'02.036"N	104°52'06.525"W	0.44	TIE ONTO GYRO SURVEYS
1377.00	0.470	87.930	1376.99	-2.40	-2.24	2.74	40°07'02.038"N	104°52'06.518"W	0.32	BEGIN BHI MWD+IFR SURVEYS
1469.00	2.230	250.930	1468.97	-2.89	-2.81	1.43	40°07'02.032"N	104°52'06.535"W	2.92	
1561.00	5.020	252.260	1560.77	-4.37	-4.62	-4.10	40°07'02.014"N	104°52'06.606"W	3.03	
1653.00	6.560	250.800	1652.30	-6.80	-7.58	-12.90	40°07'01.985"N	104°52'06.719"W	1.68	
1744.00	7.130	233.270	1742.66	-11.31	-12.66	-22.33	40°07'01.935"N	104°52'06.840"W	2.37	
1836.00	8.160	232.450	1833.84	-18.11	-20.06	-32.09	40°07'01.862"N	104°52'06.966"W	1.13	
1928.00	8.980	232.940	1924.82	-25.76	-28.37	-42.99	40°07'01.780"N	104°52'07.106"W	0.89	
2020.00	9.830	227.040	2015.58	-34.74	-38.04	-54.47	40°07'01.684"N	104°52'07.254"W	1.40	
2112.00	9.490	226.070	2106.28	-44.67	-48.66	-65.68	40°07'01.579"N	104°52'07.398"W	0.41	
2204.00	9.530	225.690	2197.01	-54.58	-59.24	-76.59	40°07'01.475"N	104°52'07.539"W	0.08	
2295.00	10.520	227.650	2286.62	-64.73	-70.10	-88.12	40°07'01.367"N	104°52'07.687"W	1.15	
2388.00	11.380	224.470	2377.93	-76.22	-82.37	-100.82	40°07'01.246"N	104°52'07.851"W	1.13	
2480.00	10.840	221.560	2468.20	-88.43	-95.32	-112.92	40°07'01.118"N	104°52'08.006"W	0.85	
2573.00	9.790	222.500	2559.70	-100.12	-107.69	-124.07	40°07'00.996"N	104°52'08.150"W	1.14	
2666.00	10.510	227.600	2651.25	-110.96	-119.24	-135.67	40°07'00.882"N	104°52'08.299"W	1.24	
2759.00	9.560	226.820	2742.82	-121.24	-130.24	-147.57	40°07'00.773"N	104°52'08.452"W	1.03	
2851.00	10.340	222.110	2833.44	-131.91	-141.60	-158.67	40°07'00.661"N	104°52'08.595"W	1.22	
2944.00	9.790	221.480	2925.01	-143.36	-153.71	-169.51	40°07'00.541"N	104°52'08.735"W	0.60	
3036.00	11.070	220.410	3015.49	-155.27	-166.30	-180.41	40°07'00.417"N	104°52'08.875"W	1.41	
3130.00	10.060	217.480	3107.89	-167.99	-179.69	-191.26	40°07'00.284"N	104°52'09.015"W	1.22	
3225.00	10.310	224.750	3201.40	-179.93	-192.31	-202.30	40°07'00.160"N	104°52'09.157"W	1.38	
3319.00	9.470	223.650	3294.00	-190.81	-203.88	-213.55	40°07'00.045"N	104°52'09.302"W	0.92	
3413.00	10.540	222.230	3386.57	-202.09	-215.84	-224.67	40°06'59.927"N	104°52'09.445"W	1.17	
3507.00	10.340	226.850	3479.01	-213.50	-227.97	-236.60	40°06'59.807"N	104°52'09.598"W	0.92	
3602.00	8.760	225.520	3572.70	-223.70	-238.87	-247.99	40°06'59.699"N	104°52'09.745"W	1.68	
3696.00	8.600	229.020	3665.62	-232.69	-248.50	-258.40	40°06'59.604"N	104°52'09.879"W	0.59	
3790.00	9.600	227.370	3758.44	-241.93	-258.42	-269.47	40°06'59.506"N	104°52'10.022"W	1.10	
3885.00	8.750	225.620	3852.22	-251.68	-268.84	-280.47	40°06'59.403"N	104°52'10.163"W	0.94	
3979.00	9.250	217.440	3945.07	-262.08	-279.84	-290.17	40°06'59.295"N	104°52'10.288"W	1.46	
4073.00	9.020	226.480	4037.88	-272.54	-290.91	-300.11	40°06'59.185"N	104°52'10.416"W	1.54	

REFERENCE WELLPATH IDENTIFICATION			
Operator	KERR-MCGEE OIL & GAS ONSHORE LP	Slot	SLOT#25 GWARDAR 1N-22HZ (300'FSL & 280'FEL, SEC.22)
Area	COLORADO	Well	GWARDAR 1N-22HZ
Field	WELD COUNTY (KERR MCGEE)	Wellbore	GWARDAR 1N-22HZ AWB
Facility	SEC.22-T2N-R67W		

WELLPATH DATA (132 stations) † = interpolated/extrapolated station										
MD [ft]	Inclination [°]	Azimuth [°]	TVD [ft]	Vert Sect [ft]	North [ft]	East [ft]	Latitude	Longitude	DLS [°/100ft]	Comments
4168.00	8.780	222.500	4131.74	-282.38	-301.38	-310.40	40°06'59.082"N	104°52'10.548"W	0.70	
4262.00	10.040	227.170	4224.47	-292.58	-312.24	-321.26	40°06'58.974"N	104°52'10.688"W	1.57	
4356.00	9.600	225.600	4317.09	-302.92	-323.30	-332.87	40°06'58.865"N	104°52'10.838"W	0.55	
4451.00	8.060	222.400	4410.96	-312.76	-333.76	-343.02	40°06'58.762"N	104°52'10.968"W	1.70	
4545.00	9.240	226.140	4503.89	-322.25	-343.85	-352.91	40°06'58.662"N	104°52'11.095"W	1.39	
4639.00	10.780	227.260	4596.46	-332.72	-355.05	-364.81	40°06'58.551"N	104°52'11.249"W	1.65	
4733.00	9.780	227.970	4688.95	-343.28	-366.36	-377.19	40°06'58.440"N	104°52'11.408"W	1.07	
4828.00	9.500	227.980	4782.61	-353.20	-377.01	-389.01	40°06'58.334"N	104°52'11.560"W	0.29	
4922.00	9.270	226.410	4875.35	-362.93	-387.42	-400.26	40°06'58.231"N	104°52'11.705"W	0.37	
5016.00	6.560	227.410	4968.45	-371.21	-396.28	-409.69	40°06'58.144"N	104°52'11.826"W	2.89	
5110.00	5.210	227.650	5061.95	-377.28	-402.79	-416.80	40°06'58.080"N	104°52'11.918"W	1.44	
5205.00	3.450	236.200	5156.68	-381.44	-407.29	-422.37	40°06'58.035"N	104°52'11.989"W	1.97	
5299.00	1.400	242.150	5250.59	-383.35	-409.40	-425.73	40°06'58.014"N	104°52'12.033"W	2.19	
5393.00	0.770	232.520	5344.57	-384.18	-410.32	-427.25	40°06'58.005"N	104°52'12.052"W	0.70	
5582.00	0.530	253.700	5533.56	-385.08	-411.33	-429.10	40°06'57.995"N	104°52'12.076"W	0.18	
5959.00	0.460	343.490	5910.55	-384.00	-410.37	-431.20	40°06'58.005"N	104°52'12.103"W	0.19	
6053.00	1.180	162.300	6004.54	-384.57	-410.93	-431.01	40°06'57.999"N	104°52'12.101"W	1.74	
6431.00	0.470	54.070	6382.51	-387.51	-413.73	-428.57	40°06'57.971"N	104°52'12.069"W	0.37	
6808.00	0.810	358.610	6759.49	-384.01	-410.16	-427.39	40°06'58.007"N	104°52'12.054"W	0.18	
6902.00	5.890	352.060	6853.30	-378.54	-404.72	-428.07	40°06'58.061"N	104°52'12.063"W	5.41	
6949.00	10.990	356.220	6899.78	-371.65	-397.85	-428.70	40°06'58.128"N	104°52'12.071"W	10.92	
6997.00	13.890	358.680	6946.65	-361.31	-387.52	-429.13	40°06'58.230"N	104°52'12.077"W	6.14	
7044.00	17.490	3.770	6991.89	-348.66	-374.83	-428.80	40°06'58.356"N	104°52'12.072"W	8.19	
7091.00	22.460	5.510	7036.05	-332.78	-358.84	-427.47	40°06'58.514"N	104°52'12.055"W	10.65	
7138.00	26.420	6.790	7078.83	-313.61	-339.51	-425.37	40°06'58.705"N	104°52'12.028"W	8.50	
7185.00	29.960	1.900	7120.25	-291.62	-317.39	-423.74	40°06'58.923"N	104°52'12.007"W	8.99	
7232.00	34.350	0.510	7160.04	-266.69	-292.39	-423.24	40°06'59.171"N	104°52'12.001"W	9.47	
7280.00	39.290	0.760	7198.45	-238.01	-263.63	-422.92	40°06'59.455"N	104°52'11.997"W	10.30	
7327.00	44.880	1.460	7233.32	-206.62	-232.15	-422.29	40°06'59.766"N	104°52'11.989"W	11.94	
7374.00	50.880	3.100	7264.83	-171.95	-197.34	-420.88	40°07'00.110"N	104°52'11.970"W	13.02	
7421.00	57.650	5.040	7292.26	-134.15	-159.31	-418.15	40°07'00.486"N	104°52'11.935"W	14.79	
7469.00	62.630	3.950	7316.15	-92.93	-117.82	-414.90	40°07'00.896"N	104°52'11.893"W	10.56	
7516.00	66.690	2.920	7336.26	-50.77	-75.43	-412.36	40°07'01.315"N	104°52'11.861"W	8.86	
7563.00	69.690	2.150	7353.72	-7.37	-31.84	-410.44	40°07'01.745"N	104°52'11.836"W	6.56	
7610.00	72.080	1.740	7369.11	36.84	12.54	-408.93	40°07'02.184"N	104°52'11.817"W	5.15	
7657.00	75.760	1.550	7382.13	81.82	57.67	-407.63	40°07'02.630"N	104°52'11.800"W	7.84	
7704.00	80.100	2.070	7391.96	127.58	103.60	-406.18	40°07'03.084"N	104°52'11.781"W	9.30	
7752.00	83.550	1.950	7398.78	174.87	151.08	-404.51	40°07'03.553"N	104°52'11.760"W	7.19	
7777.00†	84.739	2.053	7401.33	199.63	175.93	-403.65	40°07'03.799"N	104°52'11.749"W	4.77	7" CASING POINT
7850.00	88.210	2.350	7405.82	272.13	248.73	-400.85	40°07'04.518"N	104°52'11.713"W	4.77	
7945.00	88.610	3.090	7408.45	366.55	343.58	-396.34	40°07'05.455"N	104°52'11.655"W	0.89	
8039.00	89.620	2.600	7409.91	459.98	437.45	-391.68	40°07'06.383"N	104°52'11.595"W	1.19	
8134.00	91.010	3.440	7409.38	554.38	532.32	-386.67	40°07'07.320"N	104°52'11.530"W	1.71	
8228.00	90.860	1.260	7407.85	647.88	626.22	-382.82	40°07'08.248"N	104°52'11.481"W	2.32	
8416.00	89.470	1.030	7407.31	835.28	814.18	-379.06	40°07'10.106"N	104°52'11.432"W	0.75	

REFERENCE WELLPATH IDENTIFICATION			
Operator	KERR-MCGEE OIL & GAS ONSHORE LP	Slot	SLOT#25 GWARDAR 1N-22HZ (300'FSL & 280'FEL, SEC.22)
Area	COLORADO	Well	GWARDAR 1N-22HZ
Field	WELD COUNTY (KERR MCGEE)	Wellbore	GWARDAR 1N-22HZ AWB
Facility	SEC.22-T2N-R67W		

WELLPATH DATA (132 stations)										
MD [ft]	Inclination [°]	Azimuth [°]	TVD [ft]	Vert Sect [ft]	North [ft]	East [ft]	Latitude	Longitude	DLS [°/100ft]	Comments
8511.00	90.090	0.830	7407.67	930.01	909.16	-377.52	40°07'11.044"N	104°52'11.412"W	0.69	
8605.00	90.060	1.160	7407.55	1023.73	1003.15	-375.89	40°07'11.973"N	104°52'11.391"W	0.35	
8700.00	91.290	1.460	7406.43	1118.40	1098.12	-373.72	40°07'12.912"N	104°52'11.364"W	1.33	
8794.00	91.410	1.110	7404.22	1212.06	1192.07	-371.61	40°07'13.840"N	104°52'11.336"W	0.39	
8888.00	90.520	1.420	7402.63	1305.73	1286.03	-369.53	40°07'14.769"N	104°52'11.310"W	1.00	
8983.00	90.920	1.610	7401.44	1400.37	1380.99	-367.02	40°07'15.707"N	104°52'11.277"W	0.47	
9077.00	89.840	1.780	7400.82	1494.00	1474.94	-364.24	40°07'16.636"N	104°52'11.242"W	1.16	
9172.00	89.660	1.900	7401.23	1588.60	1569.89	-361.19	40°07'17.574"N	104°52'11.202"W	0.23	
9266.00	89.410	1.790	7401.99	1682.20	1663.84	-358.16	40°07'18.502"N	104°52'11.163"W	0.29	
9361.00	89.840	1.640	7402.62	1776.82	1758.80	-355.32	40°07'19.441"N	104°52'11.127"W	0.48	
9455.00	89.320	0.470	7403.30	1870.53	1852.78	-353.59	40°07'20.369"N	104°52'11.105"W	1.36	
9549.00	89.320	0.950	7404.42	1964.28	1946.76	-352.43	40°07'21.298"N	104°52'11.090"W	0.51	
9644.00	90.270	1.510	7404.76	2058.96	2041.74	-350.39	40°07'22.237"N	104°52'11.063"W	1.16	
9738.00	90.360	1.380	7404.24	2152.63	2135.71	-348.02	40°07'23.165"N	104°52'11.033"W	0.17	
9832.00	90.670	1.510	7403.40	2246.28	2229.67	-345.65	40°07'24.094"N	104°52'11.002"W	0.36	
9926.00	91.170	1.360	7401.89	2339.94	2323.63	-343.29	40°07'25.022"N	104°52'10.972"W	0.56	
10021.00	90.120	2.580	7400.82	2434.51	2418.57	-340.03	40°07'25.961"N	104°52'10.930"W	1.69	
10210.00	90.640	1.820	7399.57	2622.60	2607.42	-332.77	40°07'27.827"N	104°52'10.837"W	0.49	
10304.00	89.290	3.130	7399.62	2716.10	2701.33	-328.71	40°07'28.755"N	104°52'10.785"W	2.00	
10398.00	89.500	3.270	7400.62	2809.47	2795.18	-323.47	40°07'29.682"N	104°52'10.717"W	0.27	
10493.00	88.890	2.910	7401.95	2903.85	2890.03	-318.35	40°07'30.620"N	104°52'10.651"W	0.75	
10587.00	89.690	2.950	7403.12	2997.26	2983.90	-313.54	40°07'31.547"N	104°52'10.589"W	0.85	
10682.00	89.290	2.630	7403.96	3091.70	3078.78	-308.92	40°07'32.485"N	104°52'10.530"W	0.54	
10776.00	89.230	3.240	7405.18	3185.12	3172.65	-304.10	40°07'33.412"N	104°52'10.468"W	0.65	
10871.00	89.900	2.050	7405.90	3279.59	3267.54	-299.72	40°07'34.350"N	104°52'10.411"W	1.44	
10965.00	90.390	2.110	7405.66	3373.15	3361.48	-296.31	40°07'35.279"N	104°52'10.368"W	0.53	
11060.00	90.270	1.990	7405.11	3467.72	3456.42	-292.91	40°07'36.217"N	104°52'10.324"W	0.18	
11154.00	90.300	2.050	7404.64	3561.30	3550.36	-289.60	40°07'37.145"N	104°52'10.281"W	0.07	
11249.00	89.780	2.110	7404.58	3655.86	3645.30	-286.15	40°07'38.083"N	104°52'10.237"W	0.55	
11343.00	89.960	2.350	7404.79	3749.41	3739.22	-282.49	40°07'39.011"N	104°52'10.190"W	0.32	
11437.00	89.690	2.700	7405.08	3842.90	3833.13	-278.35	40°07'39.939"N	104°52'10.136"W	0.47	
11531.00	89.230	2.380	7405.96	3936.39	3927.03	-274.18	40°07'40.867"N	104°52'10.083"W	0.60	
11625.00	88.760	2.950	7407.61	4029.85	4020.92	-269.82	40°07'41.795"N	104°52'10.027"W	0.79	
11719.00	88.730	1.780	7409.67	4123.35	4114.81	-265.94	40°07'42.723"N	104°52'09.977"W	1.24	
11814.00	89.100	0.410	7411.47	4218.03	4209.78	-264.12	40°07'43.661"N	104°52'09.953"W	1.49	
11908.00	89.660	358.520	7412.49	4311.91	4303.76	-265.00	40°07'44.590"N	104°52'09.965"W	2.10	
12002.00	91.320	358.110	7411.68	4405.86	4397.72	-267.76	40°07'45.519"N	104°52'10.000"W	1.82	
12191.00	90.460	357.680	7408.75	4594.78	4586.56	-274.70	40°07'47.385"N	104°52'10.090"W	0.51	
12285.00	89.750	356.980	7408.58	4688.77	4680.46	-279.08	40°07'48.313"N	104°52'10.146"W	1.06	
12380.00	89.070	356.690	7409.55	4783.77	4775.31	-284.33	40°07'49.250"N	104°52'10.213"W	0.78	
12527.00	88.670	356.430	7412.45	4930.74	4922.01	-293.15	40°07'50.700"N	104°52'10.327"W	0.32	LAST BHI MWD+IFR SURVEY
12582.00	88.670	356.430	7413.73	4985.72	4976.89	-296.57	40°07'51.242"N	104°52'10.371"W	0.00	PROJECTION TO BIT

Actual Wellpath Report

WARDAR 1N-22HZ AWP

Page 5 of 6

REFERENCE WELLPATH IDENTIFICATION			
Operator	KERR-MCGEE OIL & GAS ONSHORE LP	Slot	SLOT#25 WARDAR 1N-22HZ (300'FSL & 280'FEL, SEC.22)
Area	COLORADO	Well	WARDAR 1N-22HZ
Field	WELD COUNTY (KERR MCGEE)	Wellbore	WARDAR 1N-22HZ AWB
Facility	SEC.22-T2N-R67W		

HOLE & CASING SECTIONS - Ref Wellbore: WARDAR 1N-22HZ AWB Ref Wellpath: WARDAR 1N-22HZ AWP									
String/Diameter	Start MD [ft]	End MD [ft]	Interval [ft]	Start TVD [ft]	End TVD [ft]	Start N/S [ft]	Start E/W [ft]	End N/S [ft]	End E/W [ft]
13.5in Open Hole	25.00	1353.00	1328.00	25.00	1352.99	0.00	0.00	-2.26	2.56
9.625in Casing Surface	25.00	1353.00	1328.00	25.00	1352.99	0.00	0.00	-2.26	2.56
8.75in Open Hole	1353.00	7801.00	6448.00	1352.99	7403.29	-2.26	2.56	199.83	-402.77
7in Casing Intermediate	25.00	7777.00	7752.00	25.00	7401.33	0.00	0.00	175.93	-403.65
6.125in Open Hole	7801.00	12582.00	4781.00	7403.29	7413.73	199.83	-402.77	4976.89	-296.57

WELLPATH COMPOSITION - Ref Wellbore: WARDAR 1N-22HZ AWB Ref Wellpath: WARDAR 1N-22HZ AWP				
Start MD [ft]	End MD [ft]	Positional Uncertainty Model	Log Name/Comment	Wellbore
25.00	1282.00	Generic gyro - continuous (Standard)	MS SURFACE GYROS <125-1282>	WARDAR 1N-22HZ AWB
1282.00	7752.00	NaviTrak (MAGCORR,IFR)	BHI NAVITRAK MWD+IFR 8 3/4" <1377-7752>	WARDAR 1N-22HZ AWB
7752.00	12527.00	NaviTrak (MAGCORR,IFR)	BHI NAVITRAK MWD+IFR 6 1/8" <7850-12527>	WARDAR 1N-22HZ AWB
12527.00	12582.00	Blind Drilling (std)	Projection to bit	WARDAR 1N-22HZ AWB



Actual Wellpath Report

GWARDAR 1N-22HZ AWP

Page 6 of 6



REFERENCE WELLPATH IDENTIFICATION			
Operator	KERR-MCGEE OIL & GAS ONSHORE LP	Slot	SLOT#25 GWARDAR 1N-22HZ (300'FSL & 280'FEL, SEC.22)
Area	COLORADO	Well	GWARDAR 1N-22HZ
Field	WELD COUNTY (KERR MCGEE)	Wellbore	GWARDAR 1N-22HZ AWB
Facility	SEC.22-T2N-R67W		

WELLPATH COMMENTS					
MD [ft]	Inclination [°]	Azimuth [°]	TVD [ft]	Comment	
25.00	0.000	150.650	25.00	TIE ON	
125.00	0.140	150.650	125.00	BEGIN GYRO SURVEYS	
1282.00	0.290	50.050	1281.99	TIE ONTO GYRO SURVEYS	
1377.00	0.470	87.930	1376.99	BEGIN BHI MWD+IFR SURVEYS	
7777.00	84.739	2.053	7401.33	7" CASING POINT	
12527.00	88.670	356.430	7412.45	LAST BHI MWD+IFR SURVEY	
12582.00	88.670	356.430	7413.73	PROJECTION TO BIT	