

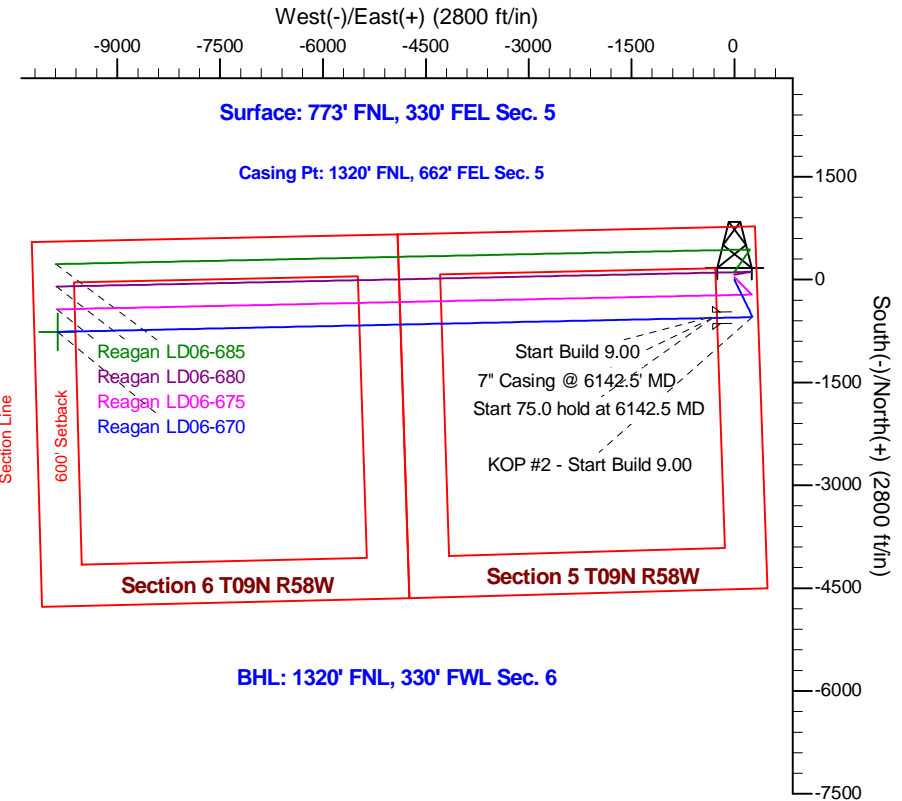
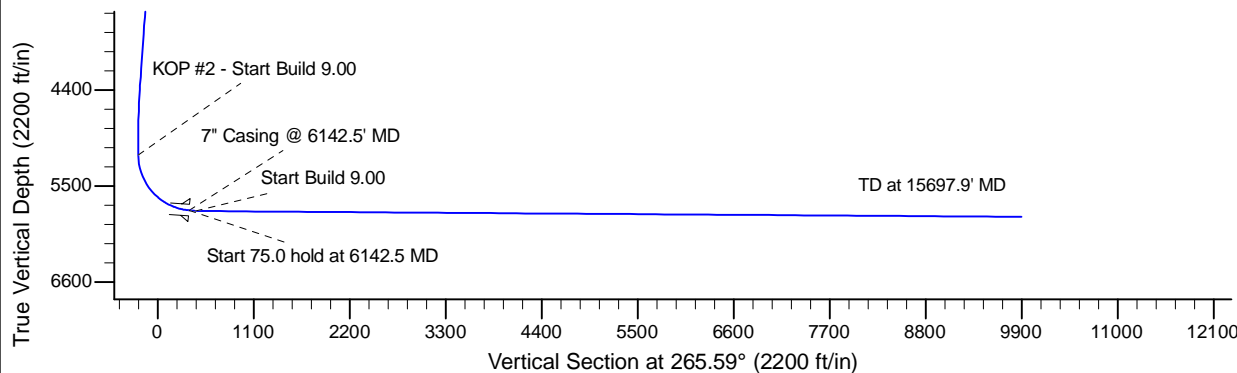
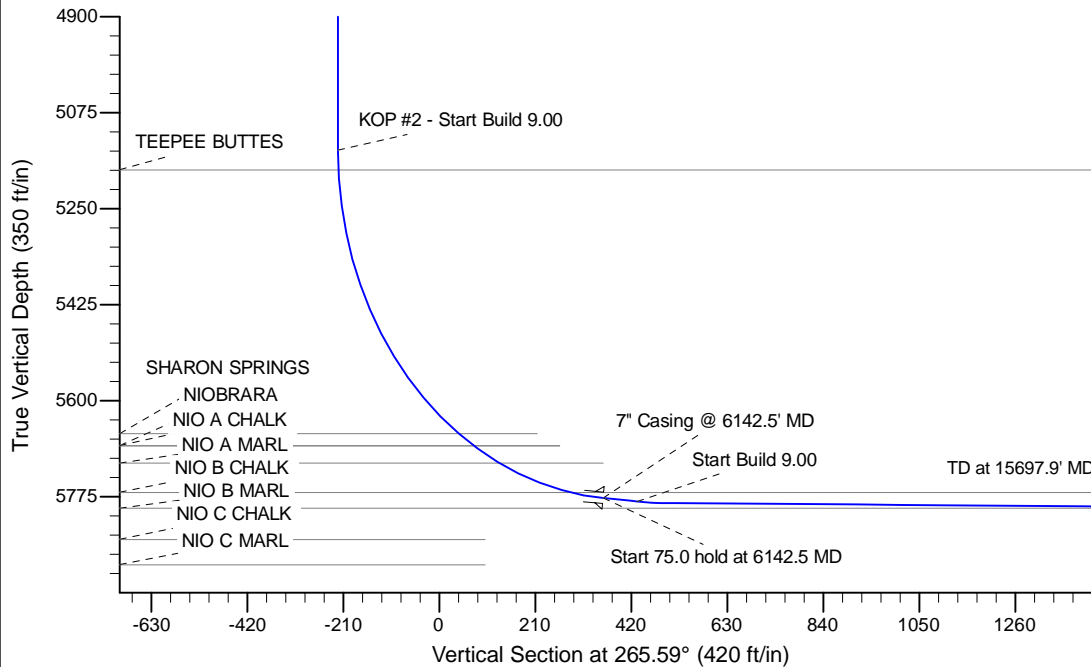
Project: Wattenberg Field  
 Site: LD (Sec.5-T09N-R58W) Weld County, CO  
 Well: Reagan LD06-670  
 Wellbore: Original Drilling  
 Design: APD - Rev 0

# Northern Region Drilling - Working

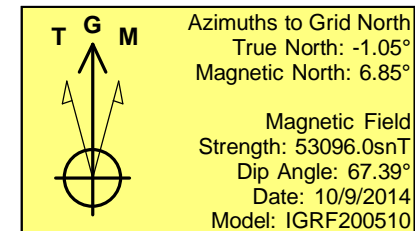
Geodetic System: US State Plane 1983  
 Datum: North American Datum 1983  
 Ellipsoid: GRS 1980  
 Zone: Colorado Northern Zone  
 System Datum: Mean Sea Level

## SECTION DETAILS

Sec	MD	Inc	Azi	TVD	+N/-S	+E/-W	Dleg	TFace	VSec	Target
1	0.0	0.00	0.00	0.0	0.0	0.0	0.00	0.00	0.0	
2	1200.0	0.00	0.00	1200.0	0.0	0.0	0.00	0.00	0.0	
3	1747.6	10.95	154.15	1744.3	-47.0	22.8	2.00	154.15	-19.1	
4	4397.3	10.95	154.15	4345.7	-500.0	242.2	0.00	0.00	-203.1	
5	4944.9	0.00	0.00	4890.0	-547.0	265.0	2.00	180.00	-222.1	
6	5198.1	0.00	0.00	5143.1	-547.0	265.0	0.00	0.00	-222.1	
7	6142.5	85.00	268.79	5777.3	-559.3	-316.0	9.00	268.79	358.1	
8	6217.5	85.00	268.79	5783.9	-560.9	-390.7	0.00	0.00	432.7	
9	6268.6	89.60	268.79	5786.3	-561.9	-441.7	9.00	0.00	483.6	
10	15697.9	89.60	268.79	5852.1	-761.3	-9868.7	0.00	0.00	9898.1	Reagan LD06-670 BHL 1320'FNL, 330'FWL



BHL: 1320' FNL, 330' FWL Sec. 6



WELL DETAILS: Reagan LD06-670

Ground Level: 4758.0					
0.0	0.0	1533103.21	3448482.48	40.785510	-103.880410

Plan: APD - Rev 0 (Reagan LD06-670/Original Drilling)

Created By: Shailey Jewell Date: 10:17, October 10 2014

OK to submit with 2A as per Noble Drilling  
 10/10/2014 11:07