

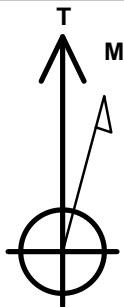
Bayswater Exploration & Production, LLC

Well Name: **Mojack P-28HC**

Surface Location: Mojack 28-C Pad (East) Sec.28-T7N-R64W
 North American Datum 1983 , US State Plane 1983 , Colorado Northern Zone
 Ground Elevation: 4901.0
 +N/-S +E/-W Northing Easting Latitude Longitude Slot
 0.0 0.0 1444866.60 3263647.39 40.550687 -104.551239
 RKB - 22.5' WELL @ 4923.5ft (RKB - 22.5')

WELLBORE TARGET DETAILS

Name	TVD	+N/-S	+E/-W	Shape
SHL 230'FNL & 1680'FEL, SEC.28	1.0	0.0	0.0	Point
BHL 470'FSL & 275'FEL, SEC.33	7158.0	-9814.0	1261.6	Point



Azimuths to True North
 Magnetic North: 8.31°

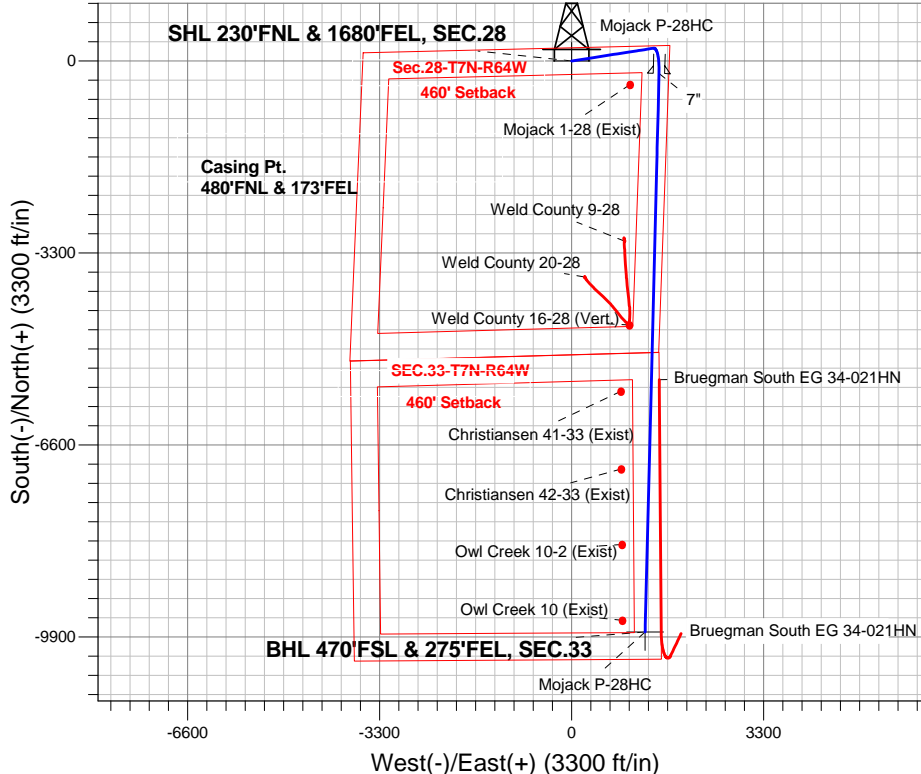
Magnetic Field
 Strength: 52879.7snT
 Dip Angle: 67.09°
 Date: 10/16/2014
 Model: IGRF2010

Mojack 28-C Pad (East) Sec.28-T7N-R64W
 Mojack P-28HC
 Plan #2 (10-15-14)
 9:13, October 16 2014

ANNOTATIONS

TVD	MD	Annotation
200.0	200.0	KOP - Start Build 2.00
6603.0	6765.3	Start DLS 11.00 TFO 102.31
7128.0	7516.3	Start 75.0 hold at 7516.3 MD
7141.0	7591.3	Start DLS 5.00 TFO -0.01
7158.4	7791.3	Start 9330.1 hold at 7791.3 MD
7158.0	17121.4	TD at 17121.4

South(-)/North(+) (3300 ft/in)



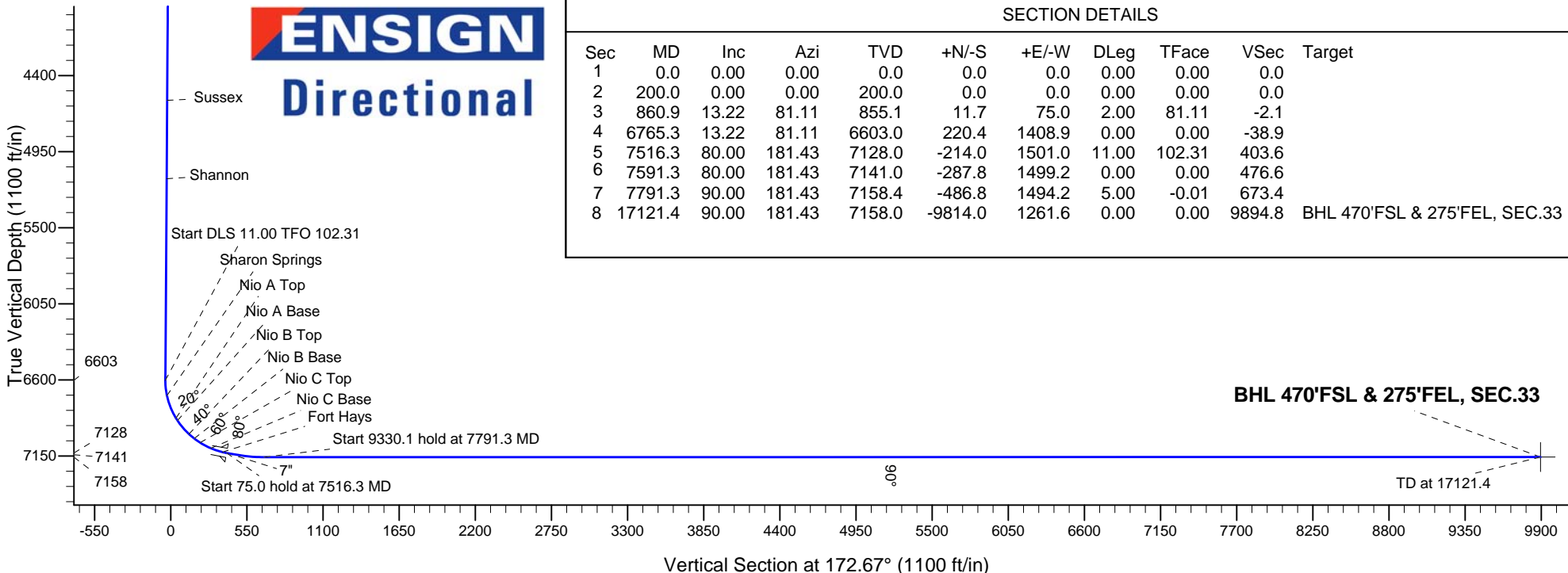
West(-)/East(+) (3300 ft/in)

ENSIGN
 Directional

SECTION DETAILS

Sec	MD	Inc	Azi	TVD	+N/-S	+E/-W	DLeg	TFace	VSec	Target
1	0.0	0.00	0.00	0.0	0.0	0.0	0.00	0.00	0.0	
2	200.0	0.00	0.00	200.0	0.0	0.0	0.00	0.00	0.0	
3	860.9	13.22	81.11	855.1	11.7	75.0	2.00	81.11	-2.1	
4	6765.3	13.22	81.11	6603.0	220.4	1408.9	0.00	0.00	-38.9	
5	7516.3	80.00	181.43	7128.0	-214.0	1501.0	11.00	102.31	403.6	
6	7591.3	80.00	181.43	7141.0	-287.8	1499.2	0.00	0.00	476.6	
7	7791.3	90.00	181.43	7158.4	-486.8	1494.2	5.00	-0.01	673.4	
8	17121.4	90.00	181.43	7158.0	-9814.0	1261.6	0.00	0.00	9894.8	BHL 470'FSL & 275'FEL, SEC.33

BHL 470'FSL & 275'FEL, SEC.33



Vertical Section at 172.67° (1100 ft/in)



Bayswater Exploration & Production, LLC

SEC.28-T7N-R64W

Mojack 28-C Pad (East) Sec.28-T7N-R64W

Mojack P-28HC

Wellbore #1

Plan: Plan #2 (10-15-14)

Standard Planning Report

16 October, 2014



BAYSWATER
EXPLORATION & PRODUCTION, LLC

Database:	Landmark	Local Co-ordinate Reference:	Well Mojack P-28HC
Company:	Bayswater Exploration & Production, LLC	TVD Reference:	WELL @ 4923.5ft (RKB - 22.5')
Project:	SEC.28-T7N-R64W	MD Reference:	WELL @ 4923.5ft (RKB - 22.5')
Site:	Mojack 28-C Pad (East) Sec.28-T7N-R64W	North Reference:	True
Well:	Mojack P-28HC	Survey Calculation Method:	Minimum Curvature
Wellbore:	Wellbore #1		
Design:	Plan #2 (10-15-14)		

Project	SEC.28-T7N-R64W, Weld County, Colorado		
Map System:	US State Plane 1983	System Datum:	Mean Sea Level
Geo Datum:	North American Datum 1983		Using Well Reference Point
Map Zone:	Colorado Northern Zone		Using geodetic scale factor

Site		Mojack 28-C Pad (East) Sec.28-T7N-R64W			
Site Position:		Northing:	1,444,862.34 ft	Latitude:	40.550679
From:	Lat/Long	Easting:	3,263,521.54 ft	Longitude:	-104.551692
Position Uncertainty:	0.0 ft	Slot Radius:	"	Grid Convergence:	0.61 °

Well	Mojack P-28HC					
Well Position	+N-S	2.9 ft	Northing:	1,444,866.60 ft	Latitude:	40.550687
	+E-W	125.9 ft	Easting:	3,263,647.39 ft	Longitude:	-104.551239
Position Uncertainty		0.0 ft	Wellhead Elevation:	ft	Ground Level:	4,901.0 ft

Wellbore	Wellbore #1				
Magnetics	Model Name	Sample Date	Declination (°)	Dip Angle (°)	Field Strength (nT)
	IGRF2010	10/16/2014	8.31	67.09	52,880

Design	Plan #2 (10-15-14)			
Audit Notes:				
Version:	Phase:	PROTOTYPE	Tie On Depth:	0.0
Vertical Section:	Depth From (TVD) (ft)	+N/-S (ft)	+E/-W (ft)	Direction (°)
	0.0	0.0	0.0	172.67

Plan Sections										
Measured Depth (ft)	Inclination (°)	Azimuth (°)	Vertical Depth (ft)	+N/-S (ft)	+E/-W (ft)	Dogleg Rate (°/100ft)	Build Rate (°/100ft)	Turn Rate (°/100ft)	TFO (°)	Target
0.0	0.00	0.00	0.0	0.0	0.0	0.00	0.00	0.00	0.00	
200.0	0.00	0.00	200.0	0.0	0.0	0.00	0.00	0.00	0.00	
860.9	13.22	81.11	855.1	11.7	75.0	2.00	2.00	0.00	81.11	
6,765.3	13.22	81.11	6,603.0	220.4	1,408.9	0.00	0.00	0.00	0.00	
7,516.3	80.00	181.43	7,128.0	-214.0	1,501.0	11.00	8.89	13.36	102.31	
7,591.3	80.00	181.43	7,141.0	-287.8	1,499.2	0.00	0.00	0.00	0.00	
7,791.3	90.00	181.43	7,158.4	-486.8	1,494.2	5.00	5.00	0.00	-0.01	
17,121.4	90.00	181.43	7,158.0	-9,814.0	1,261.6	0.00	0.00	0.00	0.00	BHL 470'FSL & 275

Database:	Landmark	Local Co-ordinate Reference:	Well Mojack P-28HC
Company:	Bayswater Exploration & Production, LLC	TVD Reference:	WELL @ 4923.5ft (RKB - 22.5')
Project:	SEC.28-T7N-R64W	MD Reference:	WELL @ 4923.5ft (RKB - 22.5')
Site:	Mojack 28-C Pad (East) Sec.28-T7N-R64W	North Reference:	True
Well:	Mojack P-28HC	Survey Calculation Method:	Minimum Curvature
Wellbore:	Wellbore #1		
Design:	Plan #2 (10-15-14)		

Planned Survey									
Measured Depth (ft)	Inclination (°)	Azimuth (°)	Vertical Depth (ft)	+N/-S (ft)	+E/-W (ft)	Vertical Section (ft)	Dogleg Rate (°/100ft)	Build Rate (°/100ft)	Turn Rate (°/100ft)
0.0	0.00	0.00	0.0	0.0	0.0	0.0	0.00	0.00	0.00
1.0	0.00	0.00	1.0	0.0	0.0	0.0	0.00	0.00	0.00
SHL 230'FNL & 1680'FEL, SEC.28									
100.0	0.00	0.00	100.0	0.0	0.0	0.0	0.00	0.00	0.00
200.0	0.00	0.00	200.0	0.0	0.0	0.0	0.00	0.00	0.00
KOP - Start Build 2.00									
300.0	2.00	81.11	300.0	0.3	1.7	0.0	2.00	2.00	0.00
400.0	4.00	81.11	399.8	1.1	6.9	-0.2	2.00	2.00	0.00
500.0	6.00	81.11	499.5	2.4	15.5	-0.4	2.00	2.00	0.00
600.0	8.00	81.11	598.7	4.3	27.5	-0.8	2.00	2.00	0.00
700.0	10.00	81.11	697.5	6.7	43.0	-1.2	2.00	2.00	0.00
800.0	12.00	81.11	795.6	9.7	61.9	-1.7	2.00	2.00	0.00
860.9	13.22	81.11	855.1	11.7	75.0	-2.1	2.00	2.00	0.00
900.0	13.22	81.11	893.1	13.1	83.8	-2.3	0.00	0.00	0.00
1,000.0	13.22	81.11	990.5	16.6	106.4	-2.9	0.00	0.00	0.00
1,100.0	13.22	81.11	1,087.8	20.2	129.0	-3.6	0.00	0.00	0.00
1,200.0	13.22	81.11	1,185.2	23.7	151.6	-4.2	0.00	0.00	0.00
1,300.0	13.22	81.11	1,282.5	27.2	174.2	-4.8	0.00	0.00	0.00
1,400.0	13.22	81.11	1,379.9	30.8	196.8	-5.4	0.00	0.00	0.00
1,500.0	13.22	81.11	1,477.2	34.3	219.4	-6.1	0.00	0.00	0.00
1,600.0	13.22	81.11	1,574.6	37.8	242.0	-6.7	0.00	0.00	0.00
1,700.0	13.22	81.11	1,671.9	41.4	264.5	-7.3	0.00	0.00	0.00
1,800.0	13.22	81.11	1,769.3	44.9	287.1	-7.9	0.00	0.00	0.00
1,900.0	13.22	81.11	1,866.6	48.4	309.7	-8.6	0.00	0.00	0.00
2,000.0	13.22	81.11	1,964.0	52.0	332.3	-9.2	0.00	0.00	0.00
2,100.0	13.22	81.11	2,061.3	55.5	354.9	-9.8	0.00	0.00	0.00
2,200.0	13.22	81.11	2,158.7	59.0	377.5	-10.4	0.00	0.00	0.00
2,300.0	13.22	81.11	2,256.0	62.6	400.1	-11.1	0.00	0.00	0.00
2,400.0	13.22	81.11	2,353.4	66.1	422.7	-11.7	0.00	0.00	0.00
2,500.0	13.22	81.11	2,450.7	69.7	445.3	-12.3	0.00	0.00	0.00
2,600.0	13.22	81.11	2,548.1	73.2	467.9	-12.9	0.00	0.00	0.00
2,700.0	13.22	81.11	2,645.4	76.7	490.5	-13.6	0.00	0.00	0.00
2,800.0	13.22	81.11	2,742.8	80.3	513.1	-14.2	0.00	0.00	0.00
2,900.0	13.22	81.11	2,840.1	83.8	535.6	-14.8	0.00	0.00	0.00
3,000.0	13.22	81.11	2,937.5	87.3	558.2	-15.4	0.00	0.00	0.00
3,100.0	13.22	81.11	3,034.8	90.9	580.8	-16.1	0.00	0.00	0.00
3,200.0	13.22	81.11	3,132.2	94.4	603.4	-16.7	0.00	0.00	0.00
3,300.0	13.22	81.11	3,229.5	97.9	626.0	-17.3	0.00	0.00	0.00
3,400.0	13.22	81.11	3,326.9	101.5	648.6	-17.9	0.00	0.00	0.00
3,500.0	13.22	81.11	3,424.2	105.0	671.2	-18.6	0.00	0.00	0.00
3,600.0	13.22	81.11	3,521.6	108.5	693.8	-19.2	0.00	0.00	0.00
3,700.0	13.22	81.11	3,618.9	112.1	716.4	-19.8	0.00	0.00	0.00
3,800.0	13.22	81.11	3,716.3	115.6	739.0	-20.4	0.00	0.00	0.00
3,900.0	13.22	81.11	3,813.6	119.1	761.6	-21.0	0.00	0.00	0.00
3,905.0	13.22	81.11	3,818.5	119.3	762.7	-21.1	0.00	0.00	0.00
Parkman									
4,000.0	13.22	81.11	3,911.0	122.7	784.1	-21.7	0.00	0.00	0.00
4,100.0	13.22	81.11	4,008.3	126.2	806.7	-22.3	0.00	0.00	0.00
4,200.0	13.22	81.11	4,105.7	129.7	829.3	-22.9	0.00	0.00	0.00
4,300.0	13.22	81.11	4,203.0	133.3	851.9	-23.5	0.00	0.00	0.00
4,400.0	13.22	81.11	4,300.4	136.8	874.5	-24.2	0.00	0.00	0.00
4,500.0	13.22	81.11	4,397.7	140.3	897.1	-24.8	0.00	0.00	0.00
4,600.0	13.22	81.11	4,495.1	143.9	919.7	-25.4	0.00	0.00	0.00

Database:	Landmark	Local Co-ordinate Reference:	Well Mojack P-28HC
Company:	Bayswater Exploration & Production, LLC	TVD Reference:	WELL @ 4923.5ft (RKB - 22.5')
Project:	SEC.28-T7N-R64W	MD Reference:	WELL @ 4923.5ft (RKB - 22.5')
Site:	Mojack 28-C Pad (East) Sec.28-T7N-R64W	North Reference:	True
Well:	Mojack P-28HC	Survey Calculation Method:	Minimum Curvature
Wellbore:	Wellbore #1		
Design:	Plan #2 (10-15-14)		

Planned Survey									
Measured Depth (ft)	Inclination (°)	Azimuth (°)	Vertical Depth (ft)	+N/-S (ft)	+E/-W (ft)	Vertical Section (ft)	Dogleg Rate (°/100ft)	Build Rate (°/100ft)	Turn Rate (°/100ft)
4,686.7	13.22	81.11	4,579.5	146.9	939.3	-26.0	0.00	0.00	0.00
Sussex									
4,700.0	13.22	81.11	4,592.4	147.4	942.3	-26.0	0.00	0.00	0.00
4,800.0	13.22	81.11	4,689.8	150.9	964.9	-26.7	0.00	0.00	0.00
4,900.0	13.22	81.11	4,787.1	154.5	987.5	-27.3	0.00	0.00	0.00
5,000.0	13.22	81.11	4,884.5	158.0	1,010.1	-27.9	0.00	0.00	0.00
5,100.0	13.22	81.11	4,981.8	161.5	1,032.7	-28.5	0.00	0.00	0.00
5,200.0	13.22	81.11	5,079.2	165.1	1,055.2	-29.2	0.00	0.00	0.00
5,268.1	13.22	81.11	5,145.5	167.5	1,070.6	-29.6	0.00	0.00	0.00
Shannon									
5,300.0	13.22	81.11	5,176.5	168.6	1,077.8	-29.8	0.00	0.00	0.00
5,400.0	13.22	81.11	5,273.9	172.1	1,100.4	-30.4	0.00	0.00	0.00
5,500.0	13.22	81.11	5,371.2	175.7	1,123.0	-31.0	0.00	0.00	0.00
5,600.0	13.22	81.11	5,468.6	179.2	1,145.6	-31.7	0.00	0.00	0.00
5,700.0	13.22	81.11	5,565.9	182.7	1,168.2	-32.3	0.00	0.00	0.00
5,800.0	13.22	81.11	5,663.3	186.3	1,190.8	-32.9	0.00	0.00	0.00
5,900.0	13.22	81.11	5,760.6	189.8	1,213.4	-33.5	0.00	0.00	0.00
6,000.0	13.22	81.11	5,858.0	193.3	1,236.0	-34.2	0.00	0.00	0.00
6,100.0	13.22	81.11	5,955.4	196.9	1,258.6	-34.8	0.00	0.00	0.00
6,200.0	13.22	81.11	6,052.7	200.4	1,281.2	-35.4	0.00	0.00	0.00
6,300.0	13.22	81.11	6,150.1	203.9	1,303.7	-36.0	0.00	0.00	0.00
6,400.0	13.22	81.11	6,247.4	207.5	1,326.3	-36.7	0.00	0.00	0.00
6,500.0	13.22	81.11	6,344.8	211.0	1,348.9	-37.3	0.00	0.00	0.00
6,600.0	13.22	81.11	6,442.1	214.5	1,371.5	-37.9	0.00	0.00	0.00
6,700.0	13.22	81.11	6,539.5	218.1	1,394.1	-38.5	0.00	0.00	0.00
6,765.3	13.22	81.11	6,603.0	220.4	1,408.9	-38.9	0.00	0.00	0.00
Start DLS 11.00 TFO 102.31									
6,800.0	12.94	97.99	6,636.8	220.4	1,416.6	-38.0	11.00	-0.79	48.66
6,879.1	16.07	131.01	6,713.5	212.0	1,433.7	-27.5	11.00	3.95	41.76
Sharon Springs									
6,900.0	17.52	137.20	6,733.5	207.8	1,438.0	-22.8	11.00	6.95	29.54
7,000.0	26.16	155.93	6,826.4	176.5	1,457.3	10.7	11.00	8.64	18.73
7,057.3	31.74	162.00	6,876.5	150.7	1,467.1	37.6	11.00	9.74	10.59
Nio A Top									
7,077.5	33.77	163.70	6,893.5	140.2	1,470.3	48.4	11.00	10.02	8.40
Nio A Base									
7,100.0	36.04	165.39	6,912.0	127.8	1,473.8	61.2	11.00	10.13	7.51
7,200.0	46.38	171.13	6,987.1	63.4	1,486.8	126.7	11.00	10.34	5.74
7,206.4	47.05	171.43	6,991.5	58.7	1,487.5	131.4	11.00	10.47	4.64
Nio B Top									
7,255.8	52.25	173.53	7,023.5	21.4	1,492.4	169.1	11.00	10.52	4.24
Nio B Base									
7,300.0	56.92	175.16	7,049.1	-14.4	1,495.9	205.0	11.00	10.58	3.70
7,308.2	57.79	175.45	7,053.5	-21.3	1,496.5	211.9	11.00	10.61	3.47
Nio C Top									
7,394.6	66.99	178.16	7,093.5	-97.6	1,500.7	288.2	11.00	10.64	3.14
Nio C Base									
7,400.0	67.57	178.32	7,095.6	-102.6	1,500.8	293.1	11.00	10.67	2.89
7,484.2	76.57	180.61	7,121.5	-182.7	1,501.6	372.6	11.00	10.69	2.72
Fort Hays									
7,500.0	78.26	181.02	7,124.9	-198.0	1,501.3	387.9	11.00	10.71	2.58
7,516.3	80.00	181.43	7,128.0	-214.0	1,501.0	403.7	10.97	10.68	2.54

Database:	Landmark	Local Co-ordinate Reference:	Well Mojack P-28HC
Company:	Bayswater Exploration & Production, LLC	TVD Reference:	WELL @ 4923.5ft (RKB - 22.5')
Project:	SEC.28-T7N-R64W	MD Reference:	WELL @ 4923.5ft (RKB - 22.5')
Site:	Mojack 28-C Pad (East) Sec.28-T7N-R64W	North Reference:	True
Well:	Mojack P-28HC	Survey Calculation Method:	Minimum Curvature
Wellbore:	Wellbore #1		
Design:	Plan #2 (10-15-14)		

Planned Survey									
Measured Depth (ft)	Inclination (°)	Azimuth (°)	Vertical Depth (ft)	+N/-S (ft)	+E/-W (ft)	Vertical Section (ft)	Dogleg Rate (°/100ft)	Build Rate (°/100ft)	Turn Rate (°/100ft)
Start 75.0 hold at 7516.3 MD - 7"									
7,591.3	80.00	181.43	7,141.0	-287.9	1,499.2	476.7	0.00	0.00	0.00
Start DLS 5.00 TFO -0.01									
7,600.0	80.44	181.43	7,142.5	-296.5	1,498.9	485.2	5.03	5.03	0.00
7,700.0	85.44	181.43	7,154.8	-395.6	1,496.5	583.2	5.00	5.00	0.00
7,791.3	90.00	181.43	7,158.4	-486.8	1,494.2	673.4	5.00	5.00	0.00
Start 9330.1 hold at 7791.3 MD									
7,800.0	90.00	181.43	7,158.4	-495.5	1,494.0	682.0	0.00	0.00	0.00
7,900.0	90.00	181.43	7,158.4	-595.5	1,491.5	780.8	0.00	0.00	0.00
8,000.0	90.00	181.43	7,158.4	-695.4	1,489.0	879.6	0.00	0.00	0.00
8,100.0	90.00	181.43	7,158.4	-795.4	1,486.5	978.5	0.00	0.00	0.00
8,200.0	90.00	181.43	7,158.4	-895.4	1,484.0	1,077.3	0.00	0.00	0.00
8,300.0	90.00	181.43	7,158.4	-995.4	1,481.5	1,176.1	0.00	0.00	0.00
8,400.0	90.00	181.43	7,158.4	-1,095.3	1,479.0	1,275.0	0.00	0.00	0.00
8,500.0	90.00	181.43	7,158.4	-1,195.3	1,476.5	1,373.8	0.00	0.00	0.00
8,600.0	90.00	181.43	7,158.4	-1,295.3	1,474.0	1,472.6	0.00	0.00	0.00
8,700.0	90.00	181.43	7,158.4	-1,395.2	1,471.5	1,571.5	0.00	0.00	0.00
8,800.0	90.00	181.43	7,158.4	-1,495.2	1,469.0	1,670.3	0.00	0.00	0.00
8,900.0	90.00	181.43	7,158.4	-1,595.2	1,466.6	1,769.1	0.00	0.00	0.00
9,000.0	90.00	181.43	7,158.4	-1,695.1	1,464.1	1,868.0	0.00	0.00	0.00
9,100.0	90.00	181.43	7,158.4	-1,795.1	1,461.6	1,966.8	0.00	0.00	0.00
9,200.0	90.00	181.43	7,158.4	-1,895.1	1,459.1	2,065.6	0.00	0.00	0.00
9,300.0	90.00	181.43	7,158.4	-1,995.0	1,456.6	2,164.5	0.00	0.00	0.00
9,400.0	90.00	181.43	7,158.4	-2,095.0	1,454.1	2,263.3	0.00	0.00	0.00
9,500.0	90.00	181.43	7,158.4	-2,195.0	1,451.6	2,362.1	0.00	0.00	0.00
9,600.0	90.00	181.43	7,158.3	-2,294.9	1,449.1	2,461.0	0.00	0.00	0.00
9,700.0	90.00	181.43	7,158.3	-2,394.9	1,446.6	2,559.8	0.00	0.00	0.00
9,800.0	90.00	181.43	7,158.3	-2,494.9	1,444.1	2,658.7	0.00	0.00	0.00
9,900.0	90.00	181.43	7,158.3	-2,594.9	1,441.6	2,757.5	0.00	0.00	0.00
10,000.0	90.00	181.43	7,158.3	-2,694.8	1,439.1	2,856.3	0.00	0.00	0.00
10,100.0	90.00	181.43	7,158.3	-2,794.8	1,436.6	2,955.2	0.00	0.00	0.00
10,200.0	90.00	181.43	7,158.3	-2,894.8	1,434.1	3,054.0	0.00	0.00	0.00
10,300.0	90.00	181.43	7,158.3	-2,994.7	1,431.7	3,152.8	0.00	0.00	0.00
10,400.0	90.00	181.43	7,158.3	-3,094.7	1,429.2	3,251.7	0.00	0.00	0.00
10,500.0	90.00	181.43	7,158.3	-3,194.7	1,426.7	3,350.5	0.00	0.00	0.00
10,600.0	90.00	181.43	7,158.3	-3,294.6	1,424.2	3,449.3	0.00	0.00	0.00
10,700.0	90.00	181.43	7,158.3	-3,394.6	1,421.7	3,548.2	0.00	0.00	0.00
10,800.0	90.00	181.43	7,158.3	-3,494.6	1,419.2	3,647.0	0.00	0.00	0.00
10,900.0	90.00	181.43	7,158.3	-3,594.5	1,416.7	3,745.8	0.00	0.00	0.00
11,000.0	90.00	181.43	7,158.3	-3,694.5	1,414.2	3,844.7	0.00	0.00	0.00
11,100.0	90.00	181.43	7,158.3	-3,794.5	1,411.7	3,943.5	0.00	0.00	0.00
11,200.0	90.00	181.43	7,158.3	-3,894.5	1,409.2	4,042.3	0.00	0.00	0.00
11,300.0	90.00	181.43	7,158.3	-3,994.4	1,406.7	4,141.2	0.00	0.00	0.00
11,400.0	90.00	181.43	7,158.3	-4,094.4	1,404.2	4,240.0	0.00	0.00	0.00
11,500.0	90.00	181.43	7,158.3	-4,194.4	1,401.7	4,338.9	0.00	0.00	0.00
11,600.0	90.00	181.43	7,158.3	-4,294.3	1,399.2	4,437.7	0.00	0.00	0.00
11,700.0	90.00	181.43	7,158.3	-4,394.3	1,396.8	4,536.5	0.00	0.00	0.00
11,800.0	90.00	181.43	7,158.2	-4,494.3	1,394.3	4,635.4	0.00	0.00	0.00
11,900.0	90.00	181.43	7,158.2	-4,594.2	1,391.8	4,734.2	0.00	0.00	0.00
12,000.0	90.00	181.43	7,158.2	-4,694.2	1,389.3	4,833.0	0.00	0.00	0.00
12,100.0	90.00	181.43	7,158.2	-4,794.2	1,386.8	4,931.9	0.00	0.00	0.00
12,200.0	90.00	181.43	7,158.2	-4,894.1	1,384.3	5,030.7	0.00	0.00	0.00
12,300.0	90.00	181.43	7,158.2	-4,994.1	1,381.8	5,129.5	0.00	0.00	0.00

Database:	Landmark	Local Co-ordinate Reference:	Well Mojack P-28HC
Company:	Bayswater Exploration & Production, LLC	TVD Reference:	WELL @ 4923.5ft (RKB - 22.5')
Project:	SEC.28-T7N-R64W	MD Reference:	WELL @ 4923.5ft (RKB - 22.5')
Site:	Mojack 28-C Pad (East) Sec.28-T7N-R64W	North Reference:	True
Well:	Mojack P-28HC	Survey Calculation Method:	Minimum Curvature
Wellbore:	Wellbore #1		
Design:	Plan #2 (10-15-14)		

Planned Survey									
Measured Depth (ft)	Inclination (°)	Azimuth (°)	Vertical Depth (ft)	+N/-S (ft)	+E/-W (ft)	Vertical Section (ft)	Dogleg Rate (°/100ft)	Build Rate (°/100ft)	Turn Rate (°/100ft)
12,400.0	90.00	181.43	7,158.2	-5,094.1	1,379.3	5,228.4	0.00	0.00	0.00
12,500.0	90.00	181.43	7,158.2	-5,194.0	1,376.8	5,327.2	0.00	0.00	0.00
12,600.0	90.00	181.43	7,158.2	-5,294.0	1,374.3	5,426.0	0.00	0.00	0.00
12,700.0	90.00	181.43	7,158.2	-5,394.0	1,371.8	5,524.9	0.00	0.00	0.00
12,800.0	90.00	181.43	7,158.2	-5,494.0	1,369.3	5,623.7	0.00	0.00	0.00
12,900.0	90.00	181.43	7,158.2	-5,593.9	1,366.8	5,722.5	0.00	0.00	0.00
13,000.0	90.00	181.43	7,158.2	-5,693.9	1,364.4	5,821.4	0.00	0.00	0.00
13,100.0	90.00	181.43	7,158.2	-5,793.9	1,361.9	5,920.2	0.00	0.00	0.00
13,200.0	90.00	181.43	7,158.2	-5,893.8	1,359.4	6,019.0	0.00	0.00	0.00
13,300.0	90.00	181.43	7,158.2	-5,993.8	1,356.9	6,117.9	0.00	0.00	0.00
13,400.0	90.00	181.43	7,158.2	-6,093.8	1,354.4	6,216.7	0.00	0.00	0.00
13,500.0	90.00	181.43	7,158.2	-6,193.7	1,351.9	6,315.6	0.00	0.00	0.00
13,600.0	90.00	181.43	7,158.2	-6,293.7	1,349.4	6,414.4	0.00	0.00	0.00
13,700.0	90.00	181.43	7,158.2	-6,393.7	1,346.9	6,513.2	0.00	0.00	0.00
13,800.0	90.00	181.43	7,158.2	-6,493.6	1,344.4	6,612.1	0.00	0.00	0.00
13,900.0	90.00	181.43	7,158.1	-6,593.6	1,341.9	6,710.9	0.00	0.00	0.00
14,000.0	90.00	181.43	7,158.1	-6,693.6	1,339.4	6,809.7	0.00	0.00	0.00
14,100.0	90.00	181.43	7,158.1	-6,793.6	1,336.9	6,908.6	0.00	0.00	0.00
14,200.0	90.00	181.43	7,158.1	-6,893.5	1,334.4	7,007.4	0.00	0.00	0.00
14,300.0	90.00	181.43	7,158.1	-6,993.5	1,331.9	7,106.2	0.00	0.00	0.00
14,400.0	90.00	181.43	7,158.1	-7,093.5	1,329.5	7,205.1	0.00	0.00	0.00
14,500.0	90.00	181.43	7,158.1	-7,193.4	1,327.0	7,303.9	0.00	0.00	0.00
14,600.0	90.00	181.43	7,158.1	-7,293.4	1,324.5	7,402.7	0.00	0.00	0.00
14,700.0	90.00	181.43	7,158.1	-7,393.4	1,322.0	7,501.6	0.00	0.00	0.00
14,800.0	90.00	181.43	7,158.1	-7,493.3	1,319.5	7,600.4	0.00	0.00	0.00
14,900.0	90.00	181.43	7,158.1	-7,593.3	1,317.0	7,699.2	0.00	0.00	0.00
15,000.0	90.00	181.43	7,158.1	-7,693.3	1,314.5	7,798.1	0.00	0.00	0.00
15,100.0	90.00	181.43	7,158.1	-7,793.2	1,312.0	7,896.9	0.00	0.00	0.00
15,200.0	90.00	181.43	7,158.1	-7,893.2	1,309.5	7,995.8	0.00	0.00	0.00
15,300.0	90.00	181.43	7,158.1	-7,993.2	1,307.0	8,094.6	0.00	0.00	0.00
15,400.0	90.00	181.43	7,158.1	-8,093.1	1,304.5	8,193.4	0.00	0.00	0.00
15,500.0	90.00	181.43	7,158.1	-8,193.1	1,302.0	8,292.3	0.00	0.00	0.00
15,600.0	90.00	181.43	7,158.1	-8,293.1	1,299.5	8,391.1	0.00	0.00	0.00
15,700.0	90.00	181.43	7,158.1	-8,393.1	1,297.0	8,489.9	0.00	0.00	0.00
15,800.0	90.00	181.43	7,158.1	-8,493.0	1,294.6	8,588.8	0.00	0.00	0.00
15,900.0	90.00	181.43	7,158.1	-8,593.0	1,292.1	8,687.6	0.00	0.00	0.00
16,000.0	90.00	181.43	7,158.1	-8,693.0	1,289.6	8,786.4	0.00	0.00	0.00
16,100.0	90.00	181.43	7,158.0	-8,792.9	1,287.1	8,885.3	0.00	0.00	0.00
16,200.0	90.00	181.43	7,158.0	-8,892.9	1,284.6	8,984.1	0.00	0.00	0.00
16,300.0	90.00	181.43	7,158.0	-8,992.9	1,282.1	9,082.9	0.00	0.00	0.00
16,400.0	90.00	181.43	7,158.0	-9,092.8	1,279.6	9,181.8	0.00	0.00	0.00
16,500.0	90.00	181.43	7,158.0	-9,192.8	1,277.1	9,280.6	0.00	0.00	0.00
16,600.0	90.00	181.43	7,158.0	-9,292.8	1,274.6	9,379.4	0.00	0.00	0.00
16,700.0	90.00	181.43	7,158.0	-9,392.7	1,272.1	9,478.3	0.00	0.00	0.00
16,800.0	90.00	181.43	7,158.0	-9,492.7	1,269.6	9,577.1	0.00	0.00	0.00
16,900.0	90.00	181.43	7,158.0	-9,592.7	1,267.1	9,676.0	0.00	0.00	0.00
17,000.0	90.00	181.43	7,158.0	-9,692.6	1,264.6	9,774.8	0.00	0.00	0.00
17,100.0	90.00	181.43	7,158.0	-9,792.6	1,262.1	9,873.6	0.00	0.00	0.00
17,121.4	90.00	181.43	7,158.0	-9,814.0	1,261.6	9,894.8	0.00	0.00	0.00
TD at 17121.4 - BHL 470°FSL & 275°FEL, SEC.33									

Database:	Landmark	Local Co-ordinate Reference:	Well Mojack P-28HC
Company:	Bayswater Exploration & Production, LLC	TVD Reference:	WELL @ 4923.5ft (RKB - 22.5')
Project:	SEC.28-T7N-R64W	MD Reference:	WELL @ 4923.5ft (RKB - 22.5')
Site:	Mojack 28-C Pad (East) Sec.28-T7N-R64W	North Reference:	True
Well:	Mojack P-28HC	Survey Calculation Method:	Minimum Curvature
Wellbore:	Wellbore #1		
Design:	Plan #2 (10-15-14)		

Targets									
Target Name									
- hit/miss target	Dip Angle	Dip Dir.	TVD	+N/-S	+E/-W	Northing	Easting	Latitude	Longitude
- Shape	(°)	(°)	(ft)	(ft)	(ft)	(ft)	(ft)		
BHL 470'FSL & 275'F	0.00	0.00	7,158.0	-9,814.0	1,261.6	1,435,066.94	3,265,013.89	40.523749	-104.546701
- plan hits target center									
- Point									
SHL 230'FNL & 1680'	0.00	0.00	1.0	0.0	0.0	1,444,866.60	3,263,647.39	40.550687	-104.551239
- plan hits target center									
- Point									

Casing Points					
Measured Depth	Vertical Depth		Name	Casing Diameter	Hole Diameter
(ft)	(ft)			(")	(")
7,516.3	7,128.0	7"		7	7-1/2

Formations						
Measured Depth	Vertical Depth		Name	Lithology	Dip	Dip Direction
(ft)	(ft)				(°)	(°)
3,905.0	3,818.5		Parkman			
4,686.7	4,579.5		Sussex			
5,268.1	5,145.5		Shannon			
6,879.1	6,713.5		Sharon Springs			
7,057.3	6,876.5		Nio A Top			
7,077.5	6,893.5		Nio A Base			
7,206.4	6,991.5		Nio B Top			
7,255.8	7,023.5		Nio B Base			
7,308.2	7,053.5		Nio C Top			
7,394.6	7,093.5		Nio C Base			
7,484.2	7,121.5		Fort Hays			
	7,165.5		Codell			
	7,181.5		Base of Codell			

Plan Annotations				
Measured Depth	Vertical Depth	Local Coordinates		Comment
(ft)	(ft)	+N/-S (ft)	+E/-W (ft)	
200.0	200.0	0.0	0.0	KOP - Start Build 2.00
6,765.3	6,603.0	11.7	75.0	Start DLS 11.00 TFO 102.31
7,516.3	7,128.0	220.4	1,408.9	Start 75.0 hold at 7516.3 MD
7,591.3	7,141.0	-214.0	1,501.0	Start DLS 5.00 TFO -0.01
7,791.3	7,158.4	-287.8	1,499.2	Start 9330.1 hold at 7791.3 MD
17,121.4	7,158.0	-486.8	1,494.2	TD at 17121.4



Bayswater Exploration & Production, LLC

SEC.28-T7N-R64W

Mojack 28-C Pad (East) Sec.28-T7N-R64W

Mojack P-28HC

Wellbore #1

Plan #2 (10-15-14)

Anticollision Report

16 October, 2014



BAYSWATER
EXPLORATION & PRODUCTION, LLC

Company:	Bayswater Exploration & Production, LLC	Local Co-ordinate Reference:	Well Mojack P-28HC
Project:	SEC.28-T7N-R64W	TVD Reference:	WELL @ 4923.5ft (RKB - 22.5')
Reference Site:	Mojack 28-C Pad (East) Sec.28-T7N-R64W	MD Reference:	WELL @ 4923.5ft (RKB - 22.5')
Site Error:	0.0ft	North Reference:	True
Reference Well:	Mojack P-28HC	Survey Calculation Method:	Minimum Curvature
Well Error:	0.0ft	Output errors are at	2.00 sigma
Reference Wellbore	Wellbore #1	Database:	Landmark
Reference Design:	Plan #2 (10-15-14)	Offset TVD Reference:	Offset Datum

Reference	Plan #2 (10-15-14)		
Filter type:	NO GLOBAL FILTER: Using user defined selection & filtering criteria		
Interpolation Method:	Stations	Error Model:	ISCWSA
Depth Range:	Unlimited	Scan Method:	Closest Approach 3D
Results Limited by:	Maximum center-center distance of 800.0ft	Error Surface:	Elliptical Conic
Warning Levels Evaluated at:	2.00 Sigma		

Survey Tool Program	Date 10/16/2014			
From (ft)	To (ft)	Survey (Wellbore)	Tool Name	Description
0.0	17,121.4	Plan #2 (10-15-14) (Wellbore #1)	MWD	MWD - Standard

Summary						
Site Name	Reference Measured Depth (ft)	Offset Measured Depth (ft)	Distance Between Centres (ft)	Distance Between Ellipses (ft)	Separation Factor	Warning
Bruegman South Pad Sec.34-T7N-R64W						
Bruegman South EG 34-021HN - Wellbore #1 - Plan #1 (12,784.8	11,687.1	193.3	44.0	1.294	Level 3, CC, ES, SF
Existing Wells Pad Sec.28-T7N-R64W						
Christiansen 41-33 (Exist) - Wellbore #1 - Wellbore #1	12,994.0	7,104.7	517.1	264.4	2.046	CC
Christiansen 41-33 (Exist) - Wellbore #1 - Wellbore #1	13,000.0	7,104.7	517.2	264.3	2.045	ES, SF
Christiansen 42-33 (Exist) - Wellbore #1 - Wellbore #1	14,330.5	7,104.6	478.2	200.2	1.720	CC, ES, SF
Mojack 1-28 (Exist) - Wellbore #1 - Wellbore #1	7,718.1	7,132.6	490.2	326.9	3.003	CC, ES, SF
Owl Creek 10 (Exist) - Wellbore #1 - Wellbore #1	16,930.5	7,099.5	393.8	66.4	1.203	Level 2, CC, ES, SF
Owl Creek 10-2 (Exist) - Wellbore #1 - Wellbore #1	15,625.7	7,100.6	433.4	130.8	1.432	Level 3, CC, ES, SF
Mojack 28-C Pad (East) Sec.28-T7N-R64W						
Mojack I-28HN - Wellbore #1 - Plan #1 (10-15-14)	200.0	198.0	125.9	125.3	187.999	CC, ES
Mojack I-28HN - Wellbore #1 - Plan #1 (10-15-14)	1,100.0	1,079.1	257.1	252.3	53.658	SF
Mojack J-28HN - Wellbore #1 - Plan #2 (10-15-14)	200.0	198.0	107.9	107.2	161.026	CC, ES
Mojack J-28HN - Wellbore #1 - Plan #2 (10-15-14)	1,200.0	1,183.2	260.7	255.5	49.354	SF
Mojack K-28HN - Wellbore #1 - Plan #2 (10-15-14)	200.0	199.0	89.8	89.1	133.604	CC, ES
Mojack K-28HN - Wellbore #1 - Plan #2 (10-15-14)	800.0	794.6	152.1	148.7	44.662	SF
Mojack L-28HN - Wellbore #1 - Plan #2 (10-15-14)	200.0	199.0	72.0	71.3	107.134	CC, ES
Mojack L-28HN - Wellbore #1 - Plan #2 (10-15-14)	4,000.0	3,974.7	611.9	591.8	30.445	SF
Mojack M-28HN - Wellbore #1 - Plan #2 (10-15-14)	200.0	199.0	53.9	53.3	80.250	CC, ES
Mojack M-28HN - Wellbore #1 - Plan #2 (10-15-14)	4,600.0	4,600.0	430.6	406.6	17.939	SF
Mojack N-28HN - Wellbore #1 - Plan #2 (10-15-14)	200.0	199.0	35.9	35.2	53.368	CC, ES
Mojack N-28HN - Wellbore #1 - Plan #2 (10-15-14)	17,121.4	16,853.0	605.4	237.3	1.644	SF
Mojack O-28HN - Wellbore #1 - Plan #2 (10-15-14)	200.0	199.0	17.8	17.1	26.470	CC
Mojack O-28HN - Wellbore #1 - Plan #2 (10-15-14)	17,121.4	16,967.3	325.1	-20.2	0.941	Level 1, ES, SF

Company:	Bayswater Exploration & Production, LLC	Local Co-ordinate Reference:	Well Mojack P-28HC
Project:	SEC.28-T7N-R64W	TVD Reference:	WELL @ 4923.5ft (RKB - 22.5')
Reference Site:	Mojack 28-C Pad (East) Sec.28-T7N-R64W	MD Reference:	WELL @ 4923.5ft (RKB - 22.5')
Site Error:	0.0ft	North Reference:	True
Reference Well:	Mojack P-28HC	Survey Calculation Method:	Minimum Curvature
Well Error:	0.0ft	Output errors are at	2.00 sigma
Reference Wellbore	Wellbore #1	Database:	Landmark
Reference Design:	Plan #2 (10-15-14)	Offset TVD Reference:	Offset Datum

Summary						
Site Name	Reference Measured Depth (ft)	Offset Measured Depth (ft)	Distance Between Centres (ft)	Distance Between Ellipses (ft)	Separation Factor	Warning
Offset Well - Wellbore - Design						
Mojack 28-C Pad (West) Sec.28-T7N-R64W						
Mojack A-28HN - Wellbore #1 - Plan #1 (4-08-14)	200.0	183.0	728.6	727.9	1,145.417	CC, ES
Mojack A-28HN - Wellbore #1 - Plan #1 (4-08-14)	600.0	500.0	776.3	773.9	333.712	SF
Mojack B-28HN - Wellbore #1 - Plan #1 (4-08-14)	200.0	183.0	710.5	709.9	1,117.014	CC, ES
Mojack B-28HN - Wellbore #1 - Plan #1 (4-08-14)	800.0	700.0	792.2	789.0	244.452	SF
Mojack C-28HN - Wellbore #1 - Plan #1 (4-08-14)	200.0	183.0	692.7	692.1	1,089.048	CC, ES
Mojack C-28HN - Wellbore #1 - Plan #1 (4-08-14)	900.0	817.0	787.3	783.6	211.498	SF
Mojack D-28HC - Wellbore #1 - Plan #1 (4-08-14)	200.0	183.0	674.7	674.0	1,060.644	CC, ES
Mojack D-28HC - Wellbore #1 - Plan #1 (4-08-14)	1,000.0	936.4	785.7	781.4	185.900	SF
Mojack E-28HN - Wellbore #1 - Plan #1 (4-08-14)	200.0	184.0	656.6	656.0	1,028.606	CC, ES
Mojack E-28HN - Wellbore #1 - Plan #1 (4-08-14)	1,100.0	1,056.5	786.9	782.2	165.786	SF
Mojack F-28HN - Wellbore #1 - Plan #1 (4-08-14)	200.0	185.0	638.8	638.2	997.213	CC, ES
Mojack F-28HN - Wellbore #1 - Plan #1 (4-08-14)	1,200.0	1,170.2	791.2	785.9	150.343	SF
Mojack G-28HN - Wellbore #1 - Plan #1 (4-08-14)	200.0	185.0	620.5	619.8	968.575	CC, ES
Mojack G-28HN - Wellbore #1 - Plan #1 (4-08-14)	1,300.0	1,267.5	795.6	789.8	138.558	SF
Mojack H-28HN - Wellbore #1 - Plan #1 (4-08-14)	200.0	186.0	602.7	602.0	937.515	CC, ES
Mojack H-28HN - Wellbore #1 - Plan #1 (4-08-14)	1,300.0	1,268.5	777.8	772.1	135.415	SF
Weld County 9-28 Pad Sec.28-T7N-R64W						
Weld County 16-28 (Vert.) - Wellbore #1 - Wellbore #1	11,853.7	7,119.7	399.4	167.7	1.724	CC, ES, SF
Weld County 20-28 - Wellbore #1 - Wellbore #1						Out of range
Weld County 9-28 - Wellbore #1 - Wellbore #1	10,404.1	7,380.3	519.6	428.3	5.690	CC, ES
Weld County 9-28 - Wellbore #1 - Wellbore #1	10,500.0	7,386.2	528.4	435.3	5.675	SF

Offset Design													Offset Site Error:	0.0 ft
Survey Program: 0-													Offset Well Error:	0.0 ft
Reference														
Measured Depth (ft)	Vertical Depth (ft)	Offset Measured Depth (ft)	Offset Vertical Depth (ft)	Reference (ft)	Offset (ft)	Semi Major Axis Highside Toolface (°)	Offset Wellbore Centre +N/-S (ft)	Offset Wellbore Centre +E/-W (ft)	Distance Between Centres (ft)	Distance Between Ellipses (ft)	Minimum Separation (ft)	Separation Factor	Warning	
12,100.0	7,158.2	11,688.8	6,957.3	97.1	87.3	-44.13	-5,476.0	1,504.4	705.7	565.9	139.77	5.049		
12,200.0	7,158.2	11,688.8	6,957.3	98.9	87.3	-44.13	-5,476.0	1,504.4	610.1	469.0	141.17	4.322		
12,300.0	7,158.2	11,688.8	6,957.3	100.7	87.3	-44.13	-5,476.0	1,504.4	516.2	373.7	142.57	3.621		
12,400.0	7,158.2	11,688.8	6,957.3	102.5	87.3	-44.13	-5,476.0	1,504.4	425.2	281.2	143.97	2.953		
12,500.0	7,158.2	11,688.8	6,957.3	104.4	87.3	-44.13	-5,476.0	1,504.4	339.2	193.8	145.37	2.333		
12,600.0	7,158.2	11,688.8	6,957.3	106.2	87.3	-44.13	-5,476.0	1,504.4	263.2	116.4	146.77	1.793		
12,700.0	7,158.2	11,688.8	6,957.3	108.0	87.3	-44.13	-5,476.0	1,504.4	208.7	60.5	148.18	1.408	Level 3	
12,784.8	7,158.2	11,687.1	6,957.3	109.6	87.2	-44.14	-5,477.7	1,504.4	193.3	44.0	149.37	1.294	Level 3, CC, ES, SF	
12,800.0	7,158.2	11,671.9	6,957.3	109.9	86.9	-44.25	-5,492.9	1,504.5	193.7	44.1	149.56	1.295	Level 3	
12,900.0	7,158.2	11,571.9	6,957.3	111.7	85.0	-44.93	-5,592.9	1,505.3	196.0	45.2	150.78	1.300	Level 3	
13,000.0	7,158.2	11,472.0	6,957.3	113.5	83.2	-45.60	-5,692.8	1,506.0	198.3	46.3	151.96	1.305	Level 3	
13,100.0	7,158.2	11,372.0	6,957.3	115.4	81.3	-46.25	-5,792.8	1,506.8	200.6	47.5	153.10	1.310	Level 3	
13,200.0	7,158.2	11,272.1	6,957.3	117.2	79.4	-46.89	-5,892.7	1,507.6	203.0	48.8	154.21	1.316	Level 3	
13,300.0	7,158.2	11,172.1	6,957.3	119.1	77.5	-47.51	-5,992.6	1,508.3	205.4	50.1	155.28	1.323	Level 3	
13,400.0	7,158.2	11,072.2	6,957.3	120.9	75.6	-48.12	-6,092.6	1,509.1	207.8	51.5	156.33	1.329	Level 3	
13,500.0	7,158.2	10,972.2	6,957.3	122.8	73.8	-48.71	-6,192.5	1,509.9	210.2	52.9	157.34	1.336	Level 3	
13,600.0	7,158.2	10,872.3	6,957.3	124.6	71.9	-49.29	-6,292.5	1,510.6	212.7	54.4	158.32	1.343	Level 3	
13,700.0	7,158.2	10,772.4	6,957.3	126.5	70.0	-49.86	-6,392.4	1,511.4	215.1	55.9	159.27	1.351	Level 3	
13,800.0	7,158.2	10,672.4	6,957.3	128.3	68.1	-50.41	-6,492.4	1,512.2	217.6	57.5	160.19	1.359	Level 3	
13,900.0	7,158.1	10,572.5	6,957.3	130.2	66.3	-50.95	-6,592.3	1,512.9	220.2	59.1	161.09	1.367	Level 3	
14,000.0	7,158.1	10,472.5	6,957.3	132.1	64.4	-51.48	-6,692.2	1,513.7	222.7	60.7	161.96	1.375	Level 3	
14,100.0	7,158.1	10,372.6	6,957.3	133.9	62.5	-52.00	-6,792.2	1,514.5	225.3	62.4	162.81	1.384	Level 3	

CC - Min centre to center distance or convergent point, SF - min separation factor, ES - min ellipse separation

Company:	Bayswater Exploration & Production, LLC	Local Co-ordinate Reference:	Well Mojack P-28HC
Project:	SEC.28-T7N-R64W	TVD Reference:	WELL @ 4923.5ft (RKB - 22.5')
Reference Site:	Mojack 28-C Pad (East) Sec.28-T7N-R64W	MD Reference:	WELL @ 4923.5ft (RKB - 22.5')
Site Error:	0.0ft	North Reference:	True
Reference Well:	Mojack P-28HC	Survey Calculation Method:	Minimum Curvature
Well Error:	0.0ft	Output errors are at	2.00 sigma
Reference Wellbore	Wellbore #1	Database:	Landmark
Reference Design:	Plan #2 (10-15-14)	Offset TVD Reference:	Offset Datum

Offset Design		Bruegman South Pad Sec.34-T7N-R64W - Bruegman South EG 34-021HN - Wellbore #1 - Plan #1 (11-										Offset Site Error:		0.0 ft
Survey Program: 0-		Reference		Offset		Semi Major Axis		Distance		Offset Well Error:		0.0 ft		
Measured Depth	Vertical Depth	Measured Depth	Vertical Depth	Reference	Offset	Highside Toolface	Offset Wellbore Centre	Between Centres	Between Ellipses	Minimum Separation	Separation Factor	Warning		
(ft)	(ft)	(ft)	(ft)	(ft)	(ft)	(°)	+N/-S (ft)	+E/-W (ft)	(ft)	(ft)	(ft)			
14,200.0	7,158.1	10,272.6	6,957.3	135.8	60.7	-52.50	-6,892.1	1,515.2	227.8	64.2	163.63	1.392 Level 3		
14,300.0	7,158.1	10,172.7	6,957.3	137.6	58.8	-53.00	-6,992.1	1,516.0	230.4	66.0	164.44	1.401 Level 3		
14,400.0	7,158.1	10,072.7	6,957.3	139.5	57.0	-53.48	-7,092.0	1,516.8	233.0	67.8	165.22	1.410 Level 3		
14,500.0	7,158.1	9,972.8	6,957.3	141.4	55.2	-53.95	-7,192.0	1,517.5	235.7	69.7	165.98	1.420 Level 3		
14,600.0	7,158.1	9,872.8	6,957.3	143.3	53.3	-54.42	-7,291.9	1,518.3	238.3	71.6	166.73	1.429 Level 3		
14,700.0	7,158.1	9,772.9	6,957.3	145.1	51.5	-54.87	-7,391.9	1,519.1	241.0	73.5	167.46	1.439 Level 3		
14,800.0	7,158.1	9,672.9	6,957.3	147.0	49.7	-55.31	-7,491.8	1,519.8	243.6	75.5	168.17	1.449 Level 3		
14,900.0	7,158.1	9,573.0	6,957.3	148.9	47.9	-55.74	-7,591.7	1,520.6	246.3	77.4	168.87	1.459 Level 3		
15,000.0	7,158.1	9,473.0	6,957.3	150.7	46.1	-56.16	-7,691.7	1,521.4	249.0	79.4	169.56	1.469 Level 3		
15,100.0	7,158.1	9,373.1	6,957.3	152.6	44.3	-56.58	-7,791.6	1,522.1	251.7	81.5	170.23	1.479 Level 3		
15,200.0	7,158.1	9,273.2	6,957.3	154.5	42.5	-56.98	-7,891.6	1,522.9	254.4	83.5	170.90	1.489 Level 3		
15,300.0	7,158.1	9,173.2	6,957.3	156.4	40.7	-57.38	-7,991.5	1,523.7	257.2	85.6	171.57	1.499 Level 3		
15,400.0	7,158.1	9,073.3	6,957.3	158.2	39.0	-57.77	-8,091.5	1,524.4	259.9	87.7	172.22	1.509		
15,500.0	7,158.1	8,973.3	6,957.3	160.1	37.2	-58.15	-8,191.4	1,525.2	262.7	89.8	172.88	1.519		
15,600.0	7,158.1	8,873.4	6,957.3	162.0	35.5	-58.52	-8,291.4	1,525.9	265.5	91.9	173.54	1.530		
15,700.0	7,158.1	8,773.4	6,957.3	163.9	33.8	-58.88	-8,391.3	1,526.7	268.2	94.0	174.20	1.540		
15,800.0	7,158.1	8,673.5	6,957.3	165.8	32.2	-59.24	-8,491.2	1,527.5	271.0	96.2	174.87	1.550		
15,900.0	7,158.1	8,573.5	6,957.3	167.6	30.5	-59.59	-8,591.2	1,528.2	273.8	98.3	175.55	1.560		
16,000.0	7,158.1	8,473.6	6,957.3	169.5	28.9	-59.93	-8,691.1	1,529.0	276.6	100.4	176.25	1.570		
16,100.0	7,158.0	8,373.6	6,957.3	171.4	27.4	-60.27	-8,791.1	1,529.8	279.5	102.5	176.97	1.579		
16,200.0	7,158.0	8,273.7	6,957.3	173.3	25.8	-60.60	-8,891.0	1,530.5	282.3	104.6	177.72	1.588		
16,300.0	7,158.0	8,173.7	6,957.3	175.2	24.4	-60.92	-8,991.0	1,531.3	285.1	106.6	178.52	1.597		
16,400.0	7,158.0	8,073.8	6,957.3	177.1	23.0	-61.23	-9,090.9	1,532.1	288.0	108.6	179.36	1.606		
16,500.0	7,158.0	7,973.8	6,957.3	178.9	21.7	-61.54	-9,190.8	1,532.8	290.9	110.6	180.27	1.613		
16,600.0	7,158.0	7,873.9	6,957.3	180.8	20.4	-61.85	-9,290.8	1,533.6	293.7	112.5	181.26	1.620		
16,700.0	7,158.0	7,773.9	6,957.3	182.7	19.3	-62.15	-9,390.7	1,534.4	296.6	114.2	182.35	1.627		
16,800.0	7,158.0	7,674.0	6,957.3	184.6	18.3	-62.44	-9,490.7	1,535.1	299.5	115.9	183.56	1.631		
16,900.0	7,158.0	7,574.1	6,957.3	186.5	17.5	-62.72	-9,590.6	1,535.9	302.4	117.5	184.91	1.635		
17,000.0	7,158.0	7,474.1	6,957.3	188.4	16.8	-63.00	-9,690.6	1,536.7	305.3	118.8	186.44	1.637		
17,100.0	7,158.0	7,374.2	6,957.3	190.3	16.3	-63.28	-9,790.5	1,537.4	308.2	120.0	188.16	1.638		
17,121.4	7,158.0	7,352.8	6,957.3	190.7	16.3	-63.34	-9,811.9	1,537.6	308.8	120.2	188.57	1.638		

Company:	Bayswater Exploration & Production, LLC	Local Co-ordinate Reference:	Well Mojack P-28HC
Project:	SEC.28-T7N-R64W	TVD Reference:	WELL @ 4923.5ft (RKB - 22.5')
Reference Site:	Mojack 28-C Pad (East) Sec.28-T7N-R64W	MD Reference:	WELL @ 4923.5ft (RKB - 22.5')
Site Error:	0.0ft	North Reference:	True
Reference Well:	Mojack P-28HC	Survey Calculation Method:	Minimum Curvature
Well Error:	0.0ft	Output errors are at	2.00 sigma
Reference Wellbore	Wellbore #1	Database:	Landmark
Reference Design:	Plan #2 (10-15-14)	Offset TVD Reference:	Offset Datum

Offset Design Existing Wells Pad Sec.28-T7N-R64W - Christiansen 41-33 (Exist) - Wellbore #1 - Wellbore #1												Offset Site Error:	0.0 ft
Survey Program: 7317-UNKNOWN												Offset Well Error:	0.0 ft
Reference		Offset		Semi Major Axis		Distance							Warning
Measured Depth	Vertical Depth	Measured Depth	Vertical Depth	Reference	Offset	Highside Toolface	Offset Wellbore Centre +N/-S	+E/-W	Between Centres	Between Ellipses	Minimum Separation	Separation Factor	
(ft)	(ft)	(ft)	(ft)	(ft)	(ft)	(°)	(ft)	(ft)	(ft)	(ft)	(ft)		
12,400.0	7,158.2	7,104.7	7,104.7	102.5	142.1	90.00	-5,675.0	847.5	787.6	546.0	241.58	3.260	
12,500.0	7,158.2	7,104.7	7,104.7	104.4	142.1	90.00	-5,675.0	847.5	715.2	471.7	243.46	2.938	
12,600.0	7,158.2	7,104.7	7,104.7	106.2	142.1	90.00	-5,675.0	847.5	650.1	404.8	245.34	2.650	
12,700.0	7,158.2	7,104.7	7,104.7	108.0	142.1	90.00	-5,675.0	847.5	594.9	347.7	247.23	2.406	
12,800.0	7,158.2	7,104.7	7,104.7	109.9	142.1	90.00	-5,675.0	847.5	552.3	303.2	249.11	2.217	
12,900.0	7,158.2	7,104.7	7,104.7	111.7	142.1	90.00	-5,675.0	847.5	525.6	274.6	251.00	2.094	
12,994.0	7,158.2	7,104.7	7,104.7	113.4	142.1	90.00	-5,675.0	847.5	517.1	264.4	252.77	2.046	CC
13,000.0	7,158.2	7,104.7	7,104.7	113.5	142.1	90.00	-5,675.0	847.5	517.2	264.3	252.88	2.045	ES, SF
13,100.0	7,158.2	7,104.7	7,104.7	115.4	142.1	90.00	-5,675.0	847.5	527.9	273.1	254.77	2.072	
13,200.0	7,158.2	7,104.7	7,104.7	117.2	142.1	90.00	-5,675.0	847.5	556.7	300.0	256.66	2.169	
13,300.0	7,158.2	7,104.7	7,104.7	119.1	142.1	90.00	-5,675.0	847.5	600.9	342.3	258.55	2.324	
13,400.0	7,158.2	7,104.7	7,104.7	120.9	142.1	90.00	-5,675.0	847.5	657.5	397.0	260.44	2.524	
13,500.0	7,158.2	7,104.7	7,104.7	122.8	142.1	90.00	-5,675.0	847.5	723.5	461.2	262.33	2.758	
13,600.0	7,158.2	7,104.7	7,104.7	124.6	142.1	90.00	-5,675.0	847.5	796.7	532.4	264.22	3.015	

Company:	Bayswater Exploration & Production, LLC	Local Co-ordinate Reference:	Well Mojack P-28HC
Project:	SEC.28-T7N-R64W	TVD Reference:	WELL @ 4923.5ft (RKB - 22.5')
Reference Site:	Mojack 28-C Pad (East) Sec.28-T7N-R64W	MD Reference:	WELL @ 4923.5ft (RKB - 22.5')
Site Error:	0.0ft	North Reference:	True
Reference Well:	Mojack P-28HC	Survey Calculation Method:	Minimum Curvature
Well Error:	0.0ft	Output errors are at	2.00 sigma
Reference Wellbore	Wellbore #1	Database:	Landmark
Reference Design:	Plan #2 (10-15-14)	Offset TVD Reference:	Offset Datum

Offset Design Existing Wells Pad Sec.28-T7N-R64W - Christiansen 42-33 (Exist) - Wellbore #1 - Wellbore #1											Offset Site Error:	0.0 ft	
Survey Program: 7348-UNKNOWN											Offset Well Error:	0.0 ft	
Reference		Offset		Semi Major Axis		Distance							Warning
Measured Depth (ft)	Vertical Depth (ft)	Measured Depth (ft)	Vertical Depth (ft)	Reference (ft)	Offset (ft)	Highside Toolface (°)	Offset Wellbore Centre +N/-S (ft)	+E/-W (ft)	Between Centres (ft)	Between Ellipses (ft)	Minimum Separation (ft)	Separation Factor	
13,700.0	7,158.2	7,104.7	7,104.7	126.5	142.1	90.00	-7,012.1	853.1	791.3	525.2	266.12	2.974	
13,800.0	7,158.2	7,104.7	7,104.7	128.3	142.1	90.00	-7,012.1	853.1	714.2	446.2	268.01	2.665	
13,900.0	7,158.1	7,104.6	7,104.6	130.2	142.1	90.00	-7,012.1	853.1	643.4	373.5	269.90	2.384	
14,000.0	7,158.1	7,104.6	7,104.6	132.1	142.1	90.00	-7,012.1	853.1	581.3	309.5	271.80	2.139	
14,100.0	7,158.1	7,104.6	7,104.6	133.9	142.1	90.00	-7,012.1	853.1	530.9	257.2	273.69	1.940	
14,200.0	7,158.1	7,104.6	7,104.6	135.8	142.1	90.00	-7,012.1	853.1	495.7	220.1	275.59	1.799	
14,300.0	7,158.1	7,104.6	7,104.6	137.6	142.1	90.00	-7,012.1	853.1	479.2	201.7	277.48	1.727	
14,330.5	7,158.1	7,104.6	7,104.6	138.2	142.1	90.00	-7,012.1	853.1	478.2	200.2	278.06	1.720	CC, ES, SF
14,400.0	7,158.1	7,104.6	7,104.6	139.5	142.1	90.00	-7,012.1	853.1	483.2	203.9	279.38	1.730	
14,500.0	7,158.1	7,104.6	7,104.6	141.4	142.1	90.00	-7,012.1	853.1	507.4	226.1	281.28	1.804	
14,600.0	7,158.1	7,104.6	7,104.6	143.3	142.1	90.00	-7,012.1	853.1	548.9	265.7	283.18	1.938	
14,700.0	7,158.1	7,104.6	7,104.6	145.1	142.1	90.00	-7,012.1	853.1	604.3	319.3	285.07	2.120	
14,800.0	7,158.1	7,104.6	7,104.6	147.0	142.1	90.00	-7,012.1	853.1	670.2	383.2	286.97	2.335	
14,900.0	7,158.1	7,104.6	7,104.6	148.9	142.1	90.00	-7,012.1	853.1	743.6	454.8	288.87	2.574	

Company:	Bayswater Exploration & Production, LLC	Local Co-ordinate Reference:	Well Mojack P-28HC
Project:	SEC.28-T7N-R64W	TVD Reference:	WELL @ 4923.5ft (RKB - 22.5')
Reference Site:	Mojack 28-C Pad (East) Sec.28-T7N-R64W	MD Reference:	WELL @ 4923.5ft (RKB - 22.5')
Site Error:	0.0ft	North Reference:	True
Reference Well:	Mojack P-28HC	Survey Calculation Method:	Minimum Curvature
Well Error:	0.0ft	Output errors are at	2.00 sigma
Reference Wellbore	Wellbore #1	Database:	Landmark
Reference Design:	Plan #2 (10-15-14)	Offset TVD Reference:	Offset Datum

Offset Design Existing Wells Pad Sec.28-T7N-R64W - Mojack 1-28 (Exist) - Wellbore #1 - Wellbore #1													Offset Site Error:	0.0 ft
Survey Program: 7370-UNKNOWN													Offset Well Error:	0.0 ft
Reference		Offset		Semi Major Axis			Distance							Warning
Measured Depth (ft)	Vertical Depth (ft)	Measured Depth (ft)	Vertical Depth (ft)	Reference (ft)	Offset (ft)	Highside Toolface (°)	Offset Wellbore Centre +N/-S (ft)	+E/-W (ft)	Between Centres (ft)	Between Ellipses (ft)	Minimum Separation (ft)	Separation Factor		
2,100.0	2,061.3	2,037.8	2,037.8	8.3	40.8	44.72	-401.5	1,006.0	795.5	748.4	47.04	16.909		
2,200.0	2,158.7	2,135.2	2,135.2	8.8	42.7	45.89	-401.5	1,006.0	779.2	729.7	49.45	15.757		
2,300.0	2,256.0	2,232.5	2,232.5	9.3	44.7	47.10	-401.5	1,006.0	763.2	711.3	51.87	14.714		
2,400.0	2,353.4	2,329.9	2,329.9	9.8	46.6	48.37	-401.5	1,006.0	747.6	693.3	54.30	13.768		
2,500.0	2,450.7	2,427.2	2,427.2	10.3	48.5	49.69	-401.5	1,006.0	732.4	675.6	56.75	12.905		
2,600.0	2,548.1	2,524.6	2,524.6	10.8	50.5	51.06	-401.5	1,006.0	717.6	658.3	59.21	12.118		
2,700.0	2,645.4	2,621.9	2,621.9	11.3	52.4	52.48	-401.5	1,006.0	703.2	641.5	61.69	11.398		
2,800.0	2,742.8	2,719.3	2,719.3	11.8	54.4	53.96	-401.5	1,006.0	689.2	625.1	64.19	10.738		
2,900.0	2,840.1	2,816.6	2,816.6	12.3	56.3	55.50	-401.5	1,006.0	675.8	609.1	66.70	10.133		
3,000.0	2,937.5	2,914.0	2,914.0	12.8	58.3	57.10	-401.5	1,006.0	662.9	593.7	69.22	9.576		
3,100.0	3,034.8	3,011.3	3,011.3	13.3	60.2	58.76	-401.5	1,006.0	650.5	578.7	71.76	9.065		
3,200.0	3,132.2	3,108.7	3,108.7	13.8	62.2	60.48	-401.5	1,006.0	638.7	564.4	74.31	8.595		
3,300.0	3,229.5	3,206.0	3,206.0	14.3	64.1	62.26	-401.5	1,006.0	627.5	550.7	76.87	8.163		
3,400.0	3,326.9	3,303.4	3,303.4	14.8	66.1	64.10	-401.5	1,006.0	617.0	537.5	79.45	7.766		
3,500.0	3,424.2	3,400.7	3,400.7	15.2	68.0	66.00	-401.5	1,006.0	607.1	525.1	82.03	7.401		
3,600.0	3,521.6	3,498.1	3,498.1	15.7	70.0	67.95	-401.5	1,006.0	598.0	513.4	84.61	7.067		
3,700.0	3,618.9	3,595.4	3,595.4	16.2	71.9	69.97	-401.5	1,006.0	589.6	502.4	87.21	6.761		
3,800.0	3,716.3	3,692.8	3,692.8	16.7	73.9	72.03	-401.5	1,006.0	581.9	492.1	89.80	6.481		
3,900.0	3,813.6	3,790.1	3,790.1	17.2	75.8	74.15	-401.5	1,006.0	575.1	482.7	92.39	6.225		
4,000.0	3,911.0	3,887.5	3,887.5	17.7	77.7	76.30	-401.5	1,006.0	569.1	474.2	94.97	5.993		
4,100.0	4,008.3	3,984.8	3,984.8	18.2	79.7	78.50	-401.5	1,006.0	564.0	466.5	97.54	5.782		
4,200.0	4,105.7	4,082.2	4,082.2	18.7	81.6	80.74	-401.5	1,006.0	559.8	459.7	100.10	5.592		
4,300.0	4,203.0	4,179.5	4,179.5	19.2	83.6	83.00	-401.5	1,006.0	556.5	453.8	102.65	5.421		
4,400.0	4,300.4	4,276.9	4,276.9	19.7	85.5	85.29	-401.5	1,006.0	554.1	448.9	105.17	5.269		
4,500.0	4,397.7	4,374.2	4,374.2	20.2	87.5	87.59	-401.5	1,006.0	552.6	445.0	107.67	5.133		
4,600.0	4,495.1	4,471.6	4,471.6	20.7	89.4	89.90	-401.5	1,006.0	552.1	442.0	110.14	5.013		
4,604.4	4,499.4	4,475.9	4,475.9	20.7	89.5	90.00	-401.5	1,006.0	552.1	441.9	110.25	5.008		
4,700.0	4,592.4	4,568.9	4,568.9	21.2	91.4	92.21	-401.5	1,006.0	552.5	440.0	112.59	4.908		
4,800.0	4,689.8	4,666.3	4,666.3	21.7	93.3	94.51	-401.5	1,006.0	553.9	438.9	115.00	4.817		
4,900.0	4,787.1	4,763.6	4,763.6	22.2	95.3	96.80	-401.5	1,006.0	556.2	438.9	117.38	4.739		
5,000.0	4,884.5	4,861.0	4,861.0	22.7	97.2	99.06	-401.5	1,006.0	559.5	439.7	119.73	4.673		
5,100.0	4,981.8	4,958.3	4,958.3	23.2	99.2	101.30	-401.5	1,006.0	563.6	441.6	122.04	4.618		
5,200.0	5,079.2	5,055.7	5,055.7	23.7	101.1	103.50	-401.5	1,006.0	568.7	444.3	124.32	4.574		
5,300.0	5,176.5	5,153.0	5,153.0	24.2	103.1	105.67	-401.5	1,006.0	574.6	448.0	126.57	4.540		
5,400.0	5,273.9	5,250.4	5,250.4	24.7	105.0	107.78	-401.5	1,006.0	581.3	452.5	128.78	4.514		
5,500.0	5,371.2	5,347.7	5,347.7	25.2	107.0	109.85	-401.5	1,006.0	588.9	457.9	130.97	4.496		
5,600.0	5,468.6	5,445.1	5,445.1	25.7	108.9	111.87	-401.5	1,006.0	597.2	464.1	133.13	4.486		
5,700.0	5,565.9	5,542.4	5,542.4	26.2	110.8	113.83	-401.5	1,006.0	606.3	471.0	135.26	4.482		
5,800.0	5,663.3	5,639.8	5,639.8	26.7	112.8	115.74	-401.5	1,006.0	616.1	478.7	137.37	4.485		
5,900.0	5,760.6	5,737.1	5,737.1	27.2	114.7	117.58	-401.5	1,006.0	626.6	487.1	139.45	4.493		
6,000.0	5,858.0	5,834.5	5,834.5	27.7	116.7	119.37	-401.5	1,006.0	637.7	496.2	141.52	4.506		
6,100.0	5,955.4	5,931.9	5,931.9	28.2	118.6	121.09	-401.5	1,006.0	649.4	505.9	143.57	4.523		
6,200.0	6,052.7	6,029.2	6,029.2	28.7	120.6	122.75	-401.5	1,006.0	661.8	516.2	145.61	4.545		
6,300.0	6,150.1	6,126.6	6,126.6	29.2	122.5	124.36	-401.5	1,006.0	674.6	527.0	147.63	4.570		
6,400.0	6,247.4	6,223.9	6,223.9	29.7	124.5	125.90	-401.5	1,006.0	688.0	538.4	149.65	4.598		
6,500.0	6,344.8	6,321.3	6,321.3	30.2	126.4	127.39	-401.5	1,006.0	701.9	550.3	151.65	4.628		
6,600.0	6,442.1	6,418.6	6,418.6	30.7	128.4	128.82	-401.5	1,006.0	716.3	562.6	153.65	4.662		
6,700.0	6,539.5	6,516.0	6,516.0	31.2	130.3	130.19	-401.5	1,006.0	731.1	575.4	155.65	4.697		
6,765.3	6,603.0	6,579.5	6,579.5	31.5	131.6	131.06	-401.5	1,006.0	740.9	584.0	156.94	4.721		
6,800.0	6,636.8	6,613.3	6,613.3	31.6	132.3	114.87	-401.5	1,006.0	745.2	586.7	158.56	4.700		
6,850.0	6,685.5	6,662.0	6,662.0	31.8	133.2	93.59	-401.5	1,006.0	748.0	588.1	159.90	4.678		
6,900.0	6,733.5	6,710.0	6,710.0	32.0	134.2	78.67	-401.5	1,006.0	746.9	586.7	160.18	4.663		

CC - Min centre to center distance or convergent point, SF - min separation factor, ES - min ellipse separation

Company:	Bayswater Exploration & Production, LLC	Local Co-ordinate Reference:	Well Mojack P-28HC
Project:	SEC.28-T7N-R64W	TVD Reference:	WELL @ 4923.5ft (RKB - 22.5')
Reference Site:	Mojack 28-C Pad (East) Sec.28-T7N-R64W	MD Reference:	WELL @ 4923.5ft (RKB - 22.5')
Site Error:	0.0ft	North Reference:	True
Reference Well:	Mojack P-28HC	Survey Calculation Method:	Minimum Curvature
Well Error:	0.0ft	Output errors are at	2.00 sigma
Reference Wellbore	Wellbore #1	Database:	Landmark
Reference Design:	Plan #2 (10-15-14)	Offset TVD Reference:	Offset Datum

Offset Design Existing Wells Pad Sec.28-T7N-R64W - Mojack 1-28 (Exist) - Wellbore #1 - Wellbore #1												Offset Site Error:	0.0 ft
Survey Program: 7370-UNKNOWN												Offset Well Error:	0.0 ft
Reference		Offset		Semi Major Axis			Distance						
Measured Depth (ft)	Vertical Depth (ft)	Measured Depth (ft)	Vertical Depth (ft)	Reference (ft)	Offset (ft)	Highside Toolface (°)	Offset Wellbore Centre +N/-S (ft)	+E/-W (ft)	Between Centres (ft)	Between Ellipses (ft)	Minimum Separation (ft)	Separation Factor	Warning
6,950.0	6,780.7	6,757.2	6,757.2	32.2	135.1	69.61	-401.5	1,006.0	741.9	582.4	159.52	4.651	
7,000.0	6,826.4	6,802.9	6,802.9	32.3	136.1	64.53	-401.5	1,006.0	733.3	575.2	158.15	4.637	
7,050.0	6,870.3	6,846.8	6,846.8	32.5	136.9	62.08	-401.5	1,006.0	721.3	565.0	156.35	4.614	
7,100.0	6,912.0	6,888.5	6,888.5	32.6	137.8	61.47	-401.5	1,006.0	706.3	551.9	154.47	4.573	
7,150.0	6,951.0	6,927.5	6,927.5	32.7	138.6	62.23	-401.5	1,006.0	688.6	535.7	152.92	4.503	
7,200.0	6,987.1	6,963.6	6,963.6	32.8	139.3	64.08	-401.5	1,006.0	668.7	516.7	152.07	4.398	
7,250.0	7,019.9	6,996.4	6,996.4	32.9	139.9	66.80	-401.5	1,006.0	647.1	495.0	152.16	4.253	
7,300.0	7,049.1	7,025.6	7,025.6	32.9	140.5	70.16	-401.5	1,006.0	624.4	471.1	153.23	4.075	
7,350.0	7,074.4	7,050.9	7,050.9	33.0	141.0	73.93	-401.5	1,006.0	601.1	446.1	155.02	3.878	
7,400.0	7,095.6	7,072.1	7,072.1	33.1	141.4	77.84	-401.5	1,006.0	578.1	421.0	157.10	3.680	
7,450.0	7,112.5	7,089.0	7,089.0	33.2	141.8	81.61	-401.5	1,006.0	555.9	396.9	159.00	3.496	
7,500.0	7,124.9	7,101.4	7,101.4	33.2	142.0	84.98	-401.5	1,006.0	535.5	375.0	160.44	3.338	
7,516.3	7,128.0	7,104.5	7,104.5	33.3	142.1	85.95	-401.5	1,006.0	529.3	368.5	160.78	3.292	
7,591.3	7,141.0	7,117.5	7,117.5	33.4	142.4	87.45	-401.5	1,006.0	506.1	344.3	161.75	3.129	
7,600.0	7,142.5	7,119.0	7,119.0	33.4	142.4	87.72	-401.5	1,006.0	504.0	342.1	161.88	3.113	
7,700.0	7,154.8	7,131.3	7,131.3	33.7	142.6	89.83	-401.5	1,006.0	490.5	327.5	163.03	3.009	
7,718.1	7,156.1	7,132.6	7,132.6	33.8	142.7	90.00	-401.5	1,006.0	490.2	326.9	163.22	3.003	CC, ES, SF
7,791.3	7,158.4	7,134.9	7,134.9	34.0	142.7	90.00	-401.5	1,006.0	495.6	331.7	163.84	3.025	
7,800.0	7,158.4	7,134.9	7,134.9	34.1	142.7	90.00	-401.5	1,006.0	496.9	333.0	163.91	3.032	
7,900.0	7,158.4	7,134.9	7,134.9	34.5	142.7	90.00	-401.5	1,006.0	522.8	358.0	164.84	3.172	
8,000.0	7,158.4	7,134.9	7,134.9	35.1	142.7	90.00	-401.5	1,006.0	565.4	399.5	165.89	3.408	
8,100.0	7,158.4	7,134.9	7,134.9	35.8	142.7	90.00	-401.5	1,006.0	621.3	454.3	167.05	3.720	
8,200.0	7,158.4	7,134.9	7,134.9	36.5	142.7	90.00	-401.5	1,006.0	687.3	519.0	168.30	4.084	
8,300.0	7,158.4	7,134.9	7,134.9	37.4	142.7	90.00	-401.5	1,006.0	760.8	591.2	169.62	4.485	

Company:	Bayswater Exploration & Production, LLC	Local Co-ordinate Reference:	Well Mojack P-28HC
Project:	SEC.28-T7N-R64W	TVD Reference:	WELL @ 4923.5ft (RKB - 22.5')
Reference Site:	Mojack 28-C Pad (East) Sec.28-T7N-R64W	MD Reference:	WELL @ 4923.5ft (RKB - 22.5')
Site Error:	0.0ft	North Reference:	True
Reference Well:	Mojack P-28HC	Survey Calculation Method:	Minimum Curvature
Well Error:	0.0ft	Output errors are at	2.00 sigma
Reference Wellbore	Wellbore #1	Database:	Landmark
Reference Design:	Plan #2 (10-15-14)	Offset TVD Reference:	Offset Datum

Offset Design												Offset Site Error:	0.0 ft
Existing Wells Pad Sec.28-T7N-R64W - Owl Creek 10 (Exist) - Wellbore #1 - Wellbore #1												Offset Well Error:	0.0 ft
Survey Program: 7629-UNKNOWN													
Reference		Offset		Semi Major Axis			Distance						
Measured Depth (ft)	Vertical Depth (ft)	Measured Depth (ft)	Vertical Depth (ft)	Reference (ft)	Offset (ft)	Highside Toolface (°)	Offset Wellbore Centre +N/-S (ft)	+E/-W (ft)	Between Centres (ft)	Between Ellipses (ft)	Minimum Separation (ft)	Separation Factor	Warning
16,300.0	7,158.0	7,099.5	7,099.5	175.2	142.0	90.00	-9,613.3	872.7	743.3	428.0	315.40	2.357	
16,400.0	7,158.0	7,099.5	7,099.5	177.1	142.0	90.00	-9,613.3	872.7	660.7	343.4	317.30	2.082	
16,500.0	7,158.0	7,099.5	7,099.5	178.9	142.0	90.00	-9,613.3	872.7	583.4	264.2	319.21	1.828	
16,600.0	7,158.0	7,099.5	7,099.5	180.8	142.0	90.00	-9,613.3	872.7	514.1	193.0	321.11	1.601	
16,700.0	7,158.0	7,099.5	7,099.5	182.7	142.0	90.00	-9,613.3	872.7	456.3	133.3	323.02	1.413 Level 3	
16,800.0	7,158.0	7,099.5	7,099.5	184.6	142.0	90.00	-9,613.3	872.7	414.9	89.9	324.92	1.277 Level 3	
16,900.0	7,158.0	7,099.5	7,099.5	186.5	142.0	90.00	-9,613.3	872.7	395.0	68.2	326.83	1.209 Level 2	
16,930.5	7,158.0	7,099.5	7,099.5	187.1	142.0	90.00	-9,613.3	872.7	393.8	66.4	327.41	1.203 Level 2, CC, ES, SF	
17,000.0	7,158.0	7,099.5	7,099.5	188.4	142.0	90.00	-9,613.3	872.7	399.9	71.2	328.73	1.217 Level 2	
17,100.0	7,158.0	7,099.5	7,099.5	190.3	142.0	90.00	-9,613.3	872.7	428.8	98.1	330.64	1.297 Level 3	
17,121.4	7,158.0	7,099.5	7,099.5	190.7	142.0	90.00	-9,613.3	872.7	437.7	106.6	331.05	1.322 Level 3	

Company:	Bayswater Exploration & Production, LLC	Local Co-ordinate Reference:	Well Mojack P-28HC
Project:	SEC.28-T7N-R64W	TVD Reference:	WELL @ 4923.5ft (RKB - 22.5')
Reference Site:	Mojack 28-C Pad (East) Sec.28-T7N-R64W	MD Reference:	WELL @ 4923.5ft (RKB - 22.5')
Site Error:	0.0ft	North Reference:	True
Reference Well:	Mojack P-28HC	Survey Calculation Method:	Minimum Curvature
Well Error:	0.0ft	Output errors are at	2.00 sigma
Reference Wellbore	Wellbore #1	Database:	Landmark
Reference Design:	Plan #2 (10-15-14)	Offset TVD Reference:	Offset Datum

Offset Design		Existing Wells Pad Sec.28-T7N-R64W - Owl Creek 10-2 (Exist) - Wellbore #1 - Wellbore #1											Offset Site Error:	0.0 ft
Survey Program: 7258-UNKNOWN													Offset Well Error:	0.0 ft
Reference		Offset		Semi Major Axis		Distance							Warning	
Measured Depth	Vertical Depth	Measured Depth	Vertical Depth	Reference	Offset	Highside Toolface	Offset Wellbore Centre		Between Centres	Between Ellipses	Minimum Separation	Separation Factor		
(ft)	(ft)	(ft)	(ft)	(ft)	(ft)	(°)	+N/-S (ft)	+E/-W (ft)	(ft)	(ft)	(ft)			
15,000.0	7,158.1	7,100.6	7,100.6	150.7	142.0	90.00	-8,308.0	865.7	761.1	470.4	290.69	2.618		
15,100.0	7,158.1	7,100.6	7,100.6	152.6	142.0	90.00	-8,308.0	865.7	681.3	388.7	292.59	2.328		
15,200.0	7,158.1	7,100.6	7,100.6	154.5	142.0	90.00	-8,308.0	865.7	607.5	313.0	294.49	2.063		
15,300.0	7,158.1	7,100.6	7,100.6	156.4	142.0	90.00	-8,308.0	865.7	542.1	245.7	296.39	1.829		
15,400.0	7,158.1	7,100.6	7,100.6	158.2	142.0	90.00	-8,308.0	865.7	488.6	190.3	298.29	1.638		
15,500.0	7,158.1	7,100.6	7,100.6	160.1	142.0	90.00	-8,308.0	865.7	451.2	151.0	300.20	1.503		
15,600.0	7,158.1	7,100.6	7,100.6	162.0	142.0	90.00	-8,308.0	865.7	434.1	132.0	302.10	1.437	Level 3	
15,625.7	7,158.1	7,100.6	7,100.6	162.5	142.0	90.00	-8,308.0	865.7	433.4	130.8	302.59	1.432	Level 3, CC, ES, SF	
15,700.0	7,158.1	7,100.6	7,100.6	163.9	142.0	90.00	-8,308.0	865.7	439.7	135.7	304.00	1.446	Level 3	
15,800.0	7,158.1	7,100.6	7,100.6	165.8	142.0	90.00	-8,308.0	865.7	467.1	161.2	305.90	1.527		
15,900.0	7,158.1	7,100.6	7,100.6	167.6	142.0	90.00	-8,308.0	865.7	512.9	205.1	307.80	1.666		
16,000.0	7,158.1	7,100.6	7,100.6	169.5	142.0	90.00	-8,308.0	865.7	572.6	262.9	309.71	1.849		
16,100.0	7,158.0	7,100.5	7,100.5	171.4	142.0	90.00	-8,308.0	865.7	642.5	330.9	311.61	2.062		
16,200.0	7,158.0	7,100.5	7,100.5	173.3	142.0	90.00	-8,308.0	865.7	719.5	406.0	313.51	2.295		

Company:	Bayswater Exploration & Production, LLC	Local Co-ordinate Reference:	Well Mojack P-28HC
Project:	SEC.28-T7N-R64W	TVD Reference:	WELL @ 4923.5ft (RKB - 22.5')
Reference Site:	Mojack 28-C Pad (East) Sec.28-T7N-R64W	MD Reference:	WELL @ 4923.5ft (RKB - 22.5')
Site Error:	0.0ft	North Reference:	True
Reference Well:	Mojack P-28HC	Survey Calculation Method:	Minimum Curvature
Well Error:	0.0ft	Output errors are at	2.00 sigma
Reference Wellbore	Wellbore #1	Database:	Landmark
Reference Design:	Plan #2 (10-15-14)	Offset TVD Reference:	Offset Datum

Offset Design Mojack 28-C Pad (East) Sec.28-T7N-R64W - Mojack I-28HN - Wellbore #1 - Plan #1 (10-15-14)												Offset Site Error: 0.0 ft		
Survey Program: 0-MWD												Offset Well Error: 0.0 ft		
Reference		Offset		Semi Major Axis			Distance							Warning
Measured Depth	Vertical Depth	Measured Depth	Vertical Depth	Reference	Offset	Highside Toolface	Offset Wellbore Centre +N/-S	Offset Wellbore Centre +E/-W	Between Centres	Between Ellipses	Minimum Separation	Separation Factor		
(ft)	(ft)	(ft)	(ft)	(ft)	(ft)	(°)	(ft)	(ft)	(ft)	(ft)	(ft)			
0.0	0.0	0.0	0.0	0.0	0.0	-91.32	-2.9	-125.9	125.9					
100.0	100.0	98.0	98.0	0.1	0.1	-91.32	-2.9	-125.9	125.9	125.7	0.22	565.886		
200.0	200.0	198.0	198.0	0.3	0.3	-91.32	-2.9	-125.9	125.9	125.3	0.67	187.999	CC, ES	
300.0	300.0	298.0	298.0	0.6	0.6	-172.53	-2.9	-125.9	127.7	126.5	1.12	114.267		
400.0	399.8	397.8	397.8	0.8	0.8	-172.81	-2.9	-125.9	132.8	131.3	1.57	84.765		
500.0	499.5	497.5	497.5	1.0	1.0	-173.23	-2.9	-125.9	141.5	139.5	2.02	69.968		
600.0	598.7	596.7	596.7	1.3	1.2	-173.74	-2.9	-125.9	153.6	151.1	2.48	61.932		
700.0	697.5	695.5	695.5	1.6	1.5	-174.29	-2.9	-125.9	169.2	166.2	2.94	57.528		
800.0	795.6	793.6	793.6	2.0	1.7	-174.83	-2.9	-125.9	188.2	184.8	3.40	55.290		
860.9	855.1	853.1	853.1	2.3	1.8	-175.15	-2.9	-125.9	201.4	197.7	3.69	54.643		
900.0	893.1	891.1	891.1	2.5	1.9	-175.36	-2.9	-125.9	210.3	206.5	3.87	54.385		
1,000.0	990.5	988.5	988.5	2.9	2.1	-175.81	-2.9	-125.9	233.1	228.8	4.34	53.775		
1,100.0	1,087.8	1,079.1	1,079.1	3.4	2.3	-176.08	-2.7	-126.9	257.1	252.3	4.79	53.658	SF	
1,200.0	1,185.2	1,167.6	1,167.5	3.9	2.5	-176.11	-1.7	-130.6	283.8	278.6	5.25	54.100		
1,300.0	1,282.5	1,254.5	1,254.2	4.4	2.7	-175.97	-0.2	-136.9	313.4	307.7	5.70	54.959		
1,400.0	1,379.9	1,339.9	1,339.1	4.9	2.9	-175.71	1.9	-145.4	345.6	339.5	6.16	56.132		
1,500.0	1,477.2	1,423.5	1,422.0	5.4	3.1	-175.37	4.5	-156.2	380.5	373.9	6.62	57.497		
1,600.0	1,574.6	1,516.0	1,513.4	5.8	3.4	-174.99	7.8	-169.6	416.9	409.8	7.08	58.842		
1,700.0	1,671.9	1,609.1	1,605.5	6.3	3.6	-174.66	11.1	-183.1	453.3	445.7	7.55	60.012		
1,800.0	1,769.3	1,702.2	1,697.6	6.8	3.9	-174.39	14.4	-196.6	489.7	481.6	8.03	61.014		
1,900.0	1,866.6	1,795.3	1,789.6	7.3	4.2	-174.15	17.7	-210.0	526.1	517.6	8.50	61.878		
2,000.0	1,964.0	1,888.5	1,881.7	7.8	4.5	-173.94	21.0	-223.5	562.5	553.5	8.98	62.622		
2,100.0	2,061.3	1,981.6	1,973.8	8.3	4.8	-173.76	24.3	-237.0	598.9	589.4	9.46	63.285		
2,200.0	2,158.7	2,074.7	2,065.9	8.8	5.1	-173.59	27.6	-250.5	635.3	625.3	9.95	63.866		
2,300.0	2,256.0	2,167.8	2,158.0	9.3	5.4	-173.45	30.9	-264.0	671.7	661.3	10.43	64.381		
2,400.0	2,353.4	2,260.9	2,250.0	9.8	5.7	-173.32	34.2	-277.4	708.1	697.2	10.92	64.840		
2,500.0	2,450.7	2,354.1	2,342.1	10.3	6.0	-173.20	37.5	-290.9	744.6	733.2	11.41	65.252		
2,600.0	2,548.1	2,447.2	2,434.2	10.8	6.4	-173.10	40.8	-304.4	781.0	769.1	11.90	65.622		

Company:	Bayswater Exploration & Production, LLC	Local Co-ordinate Reference:	Well Mojack P-28HC
Project:	SEC.28-T7N-R64W	TVD Reference:	WELL @ 4923.5ft (RKB - 22.5')
Reference Site:	Mojack 28-C Pad (East) Sec.28-T7N-R64W	MD Reference:	WELL @ 4923.5ft (RKB - 22.5')
Site Error:	0.0ft	North Reference:	True
Reference Well:	Mojack P-28HC	Survey Calculation Method:	Minimum Curvature
Well Error:	0.0ft	Output errors are at	2.00 sigma
Reference Wellbore	Wellbore #1	Database:	Landmark
Reference Design:	Plan #2 (10-15-14)	Offset TVD Reference:	Offset Datum

Offset Design Mojack 28-C Pad (East) Sec.28-T7N-R64W - Mojack J-28HN - Wellbore #1 - Plan #2 (10-15-14)												Offset Site Error:	0.0 ft
Survey Program: 0-MWD												Offset Well Error:	0.0 ft
Reference		Offset		Semi Major Axis			Distance						
Measured Depth (ft)	Vertical Depth (ft)	Measured Depth (ft)	Vertical Depth (ft)	Reference (ft)	Offset (ft)	Highside Toolface (°)	Offset Wellbore Centre +N/-S (ft)	+E/-W (ft)	Between Centres (ft)	Between Ellipses (ft)	Minimum Separation (ft)	Separation Factor	Warning
0.0	0.0	0.0	0.0	0.0	0.0	-91.35	-2.6	-107.8	107.9				
100.0	100.0	98.0	98.0	0.1	0.1	-91.35	-2.6	-107.8	107.9	107.6	0.22	484.695	
200.0	200.0	198.0	198.0	0.3	0.3	-91.35	-2.6	-107.8	107.9	107.2	0.67	161.026 CC, ES	
300.0	300.0	298.0	298.0	0.6	0.6	-172.58	-2.6	-107.8	109.6	108.5	1.12	98.094	
400.0	399.8	397.8	397.8	0.8	0.8	-172.90	-2.6	-107.8	114.8	113.2	1.57	73.237	
500.0	499.5	497.5	497.5	1.0	1.0	-173.38	-2.6	-107.8	123.4	121.4	2.02	61.035	
600.0	598.7	596.7	596.7	1.3	1.2	-173.95	-2.6	-107.8	135.5	133.1	2.48	54.650	
700.0	697.5	695.5	695.5	1.6	1.5	-174.55	-2.6	-107.8	151.1	148.2	2.94	51.389	
800.0	795.6	793.6	793.6	2.0	1.7	-175.12	-2.6	-107.8	170.1	166.7	3.40	49.989	
860.9	855.1	853.1	853.1	2.3	1.8	-175.46	-2.6	-107.8	183.4	179.7	3.69	49.751	
900.0	893.1	891.1	891.1	2.5	1.9	-175.67	-2.6	-107.8	192.3	188.4	3.87	49.724	
1,000.0	990.5	988.5	988.5	2.9	2.1	-176.13	-2.6	-107.8	215.1	210.8	4.33	49.620	
1,100.0	1,087.8	1,085.8	1,085.8	3.4	2.3	-176.50	-2.6	-107.8	237.9	233.1	4.81	49.490	
1,200.0	1,185.2	1,183.2	1,183.2	3.9	2.5	-176.81	-2.6	-107.8	260.7	255.5	5.28	49.354 SF	
1,300.0	1,282.5	1,274.2	1,274.2	4.4	2.7	-176.94	-2.1	-108.7	284.5	278.7	5.75	49.509	
1,400.0	1,379.9	1,362.9	1,362.8	4.9	2.9	-176.78	-0.6	-112.0	310.7	304.5	6.21	50.066	
1,500.0	1,477.2	1,450.1	1,449.8	5.4	3.1	-176.40	2.2	-117.7	339.5	332.8	6.67	50.928	
1,600.0	1,574.6	1,535.9	1,535.1	5.8	3.3	-175.87	5.9	-125.6	370.8	363.7	7.13	52.023	
1,700.0	1,671.9	1,624.1	1,622.6	6.3	3.5	-175.21	10.9	-135.9	404.4	396.8	7.60	53.204	
1,800.0	1,769.3	1,718.1	1,715.7	6.8	3.8	-174.58	16.3	-147.3	438.4	430.3	8.08	54.285	
1,900.0	1,866.6	1,812.0	1,808.8	7.3	4.1	-174.05	21.8	-158.7	472.5	463.9	8.56	55.218	
2,000.0	1,964.0	1,905.9	1,901.8	7.8	4.3	-173.58	27.3	-170.1	506.6	497.6	9.04	56.032	
2,100.0	2,061.3	1,999.8	1,994.9	8.3	4.6	-173.18	32.7	-181.5	540.8	531.2	9.53	56.737	
2,200.0	2,158.7	2,093.8	2,088.0	8.8	4.9	-172.82	38.2	-192.9	574.9	564.9	10.02	57.360	
2,300.0	2,256.0	2,187.7	2,181.0	9.3	5.2	-172.50	43.6	-204.3	609.1	598.6	10.52	57.914	
2,400.0	2,353.4	2,281.6	2,274.1	9.8	5.4	-172.22	49.1	-215.7	643.3	632.3	11.01	58.407	
2,500.0	2,450.7	2,375.5	2,367.2	10.3	5.7	-171.96	54.6	-227.1	677.5	666.0	11.51	58.849	
2,600.0	2,548.1	2,469.5	2,460.3	10.8	6.0	-171.73	60.0	-238.6	711.7	699.7	12.01	59.246	
2,700.0	2,645.4	2,563.4	2,553.3	11.3	6.3	-171.52	65.5	-250.0	746.0	733.5	12.51	59.606	
2,800.0	2,742.8	2,657.3	2,646.4	11.8	6.6	-171.33	71.0	-261.4	780.2	767.2	13.02	59.932	

Company:	Bayswater Exploration & Production, LLC	Local Co-ordinate Reference:	Well Mojack P-28HC
Project:	SEC.28-T7N-R64W	TVD Reference:	WELL @ 4923.5ft (RKB - 22.5')
Reference Site:	Mojack 28-C Pad (East) Sec.28-T7N-R64W	MD Reference:	WELL @ 4923.5ft (RKB - 22.5')
Site Error:	0.0ft	North Reference:	True
Reference Well:	Mojack P-28HC	Survey Calculation Method:	Minimum Curvature
Well Error:	0.0ft	Output errors are at	2.00 sigma
Reference Wellbore	Wellbore #1	Database:	Landmark
Reference Design:	Plan #2 (10-15-14)	Offset TVD Reference:	Offset Datum

Offset Design Mojack 28-C Pad (East) Sec.28-T7N-R64W - Mojack K-28HN - Wellbore #1 - Plan #2 (10-15-14)												Offset Site Error:	0.0 ft
Survey Program: 0-MWD												Offset Well Error:	0.0 ft
Reference	Offset	Semi Major Axis			Distance								Warning
Measured Depth (ft)	Vertical Depth (ft)	Measured Depth (ft)	Vertical Depth (ft)	Reference (ft)	Offset (ft)	Highside Toolface (°)	Offset Wellbore Centre +N/-S (ft)	+E/-W (ft)	Between Centres (ft)	Between Ellipses (ft)	Minimum Separation (ft)	Separation Factor	
0.0	0.0	0.0	0.0	0.0	0.0	-91.39	-2.2	-89.8	89.8				
100.0	100.0	99.0	99.0	0.1	0.1	-91.39	-2.2	-89.8	89.8	89.6	0.22	401.478	
200.0	200.0	199.0	199.0	0.3	0.3	-91.39	-2.2	-89.8	89.8	89.1	0.67	133.604 CC, ES	
300.0	300.0	299.0	299.0	0.6	0.6	-172.64	-2.2	-89.8	91.5	90.4	1.12	81.759	
400.0	399.8	398.8	398.8	0.8	0.8	-173.03	-2.2	-89.8	96.7	95.1	1.57	61.622	
500.0	499.5	498.5	498.5	1.0	1.0	-173.58	-2.2	-89.8	105.4	103.3	2.02	52.047	
600.0	598.7	597.7	597.7	1.3	1.2	-174.22	-2.2	-89.8	117.5	115.0	2.48	47.328	
700.0	697.5	696.5	696.5	1.6	1.5	-174.87	-2.2	-89.8	133.1	130.1	2.94	45.219	
800.0	795.6	794.6	794.6	2.0	1.7	-175.48	-2.2	-89.8	152.1	148.7	3.41	44.662 SF	
860.9	855.1	854.1	854.1	2.3	1.8	-175.83	-2.2	-89.8	165.3	161.6	3.69	44.835	
900.0	893.1	892.1	892.1	2.5	1.9	-176.04	-2.2	-89.8	174.3	170.4	3.87	45.040	
1,000.0	990.5	989.5	989.5	2.9	2.1	-176.50	-2.2	-89.8	197.1	192.7	4.34	45.443	
1,100.0	1,087.8	1,086.8	1,086.8	3.4	2.3	-176.86	-2.2	-89.8	219.9	215.1	4.81	45.726	
1,200.0	1,185.2	1,184.2	1,184.2	3.9	2.5	-177.16	-2.2	-89.8	242.7	237.5	5.28	45.930	
1,300.0	1,282.5	1,281.5	1,281.5	4.4	2.8	-177.40	-2.2	-89.8	265.6	259.8	5.76	46.081	
1,400.0	1,379.9	1,378.9	1,378.9	4.9	3.0	-177.61	-2.2	-89.8	288.4	282.2	6.24	46.195	
1,500.0	1,477.2	1,476.2	1,476.2	5.4	3.2	-177.78	-2.2	-89.8	311.3	304.5	6.73	46.283	
1,600.0	1,574.6	1,573.6	1,573.6	5.8	3.4	-177.94	-2.2	-89.8	334.1	326.9	7.21	46.351	
1,700.0	1,671.9	1,670.9	1,670.9	6.3	3.6	-178.07	-2.2	-89.8	357.0	349.3	7.69	46.405	
1,800.0	1,769.3	1,768.3	1,768.3	6.8	3.9	-178.18	-2.2	-89.8	379.8	371.7	8.18	46.448	
1,900.0	1,866.6	1,865.6	1,865.6	7.3	4.1	-178.29	-2.2	-89.8	402.7	394.0	8.66	46.482	
2,000.0	1,964.0	1,963.0	1,963.0	7.8	4.3	-178.38	-2.2	-89.8	425.5	416.4	9.15	46.510	
2,100.0	2,061.3	2,059.2	2,059.2	8.3	4.5	-178.38	-1.6	-89.9	448.5	438.8	9.63	46.556	
2,200.0	2,158.7	2,154.6	2,154.5	8.8	4.7	-178.02	1.9	-90.8	471.8	461.7	10.11	46.642	
2,300.0	2,256.0	2,249.4	2,249.1	9.3	4.9	-177.32	8.3	-92.4	495.5	484.9	10.60	46.756	
2,400.0	2,353.4	2,343.6	2,342.8	9.8	5.2	-176.33	17.8	-94.8	519.8	508.7	11.09	46.885	
2,500.0	2,450.7	2,439.5	2,437.9	10.3	5.4	-175.20	29.4	-97.7	544.6	533.0	11.59	46.977	
2,600.0	2,548.1	2,535.8	2,533.5	10.8	5.6	-174.16	41.1	-100.7	569.6	557.5	12.11	47.035	
2,700.0	2,645.4	2,632.1	2,629.1	11.3	5.9	-173.20	52.7	-103.6	594.7	582.1	12.64	47.066	
2,800.0	2,742.8	2,728.5	2,724.6	11.8	6.1	-172.32	64.4	-106.5	620.0	606.9	13.17	47.072	
2,900.0	2,840.1	2,824.8	2,820.2	12.3	6.4	-171.51	76.1	-109.5	645.5	631.7	13.71	47.063	
3,000.0	2,937.5	2,921.1	2,915.7	12.8	6.6	-170.76	87.8	-112.4	671.0	656.7	14.26	47.040	
3,100.0	3,034.8	3,017.4	3,011.3	13.3	6.9	-170.07	99.5	-115.4	696.6	681.8	14.82	47.007	
3,200.0	3,132.2	3,113.8	3,106.9	13.8	7.2	-169.42	111.2	-118.3	722.4	707.0	15.38	46.967	
3,300.0	3,229.5	3,210.1	3,202.4	14.3	7.4	-168.82	122.9	-121.3	748.2	732.2	15.94	46.921	
3,400.0	3,326.9	3,307.0	3,298.6	14.8	7.7	-168.25	134.6	-124.2	774.0	757.5	16.51	46.884	
3,500.0	3,424.2	3,407.5	3,398.5	15.2	7.9	-167.79	145.7	-127.0	799.6	782.6	17.03	46.947	

Company:	Bayswater Exploration & Production, LLC	Local Co-ordinate Reference:	Well Mojock P-28HC
Project:	SEC.28-T7N-R64W	TVD Reference:	WELL @ 4923.5ft (RKB - 22.5')
Reference Site:	Mojack 28-C Pad (East) Sec.28-T7N-R64W	MD Reference:	WELL @ 4923.5ft (RKB - 22.5')
Site Error:	0.0ft	North Reference:	True
Reference Well:	Mojack P-28HC	Survey Calculation Method:	Minimum Curvature
Well Error:	0.0ft	Output errors are at	2.00 sigma
Reference Wellbore	Wellbore #1	Database:	Landmark
Reference Design:	Plan #2 (10-15-14)	Offset TVD Reference:	Offset Datum

Offset Design Mojack 28-C Pad (East) Sec.28-T7N-R64W - Mojack L-28HN - Wellbore #1 - Plan #2 (10-15-14)													Offset Site Error: 0.0ft
Survey Program: 0-MWD													Offset Well Error: 0.0ft
Reference		Offset		Semi Major Axis			Distance						
Measured Depth (ft)	Vertical Depth (ft)	Measured Depth (ft)	Vertical Depth (ft)	Reference (ft)	Offset (ft)	Highside Toolface (°)	Offset Wellbore Centre +N/-S (ft)	+E/-W (ft)	Between Centres (ft)	Between Ellipses (ft)	Minimum Separation (ft)	Separation Factor	Warning
0.0	0.0	0.0	0.0	0.0	0.0	-91.45	-1.8	-72.0	72.0				
100.0	100.0	99.0	99.0	0.1	0.1	-91.45	-1.8	-72.0	72.0	71.8	0.22	321.936	
200.0	200.0	199.0	199.0	0.3	0.3	-91.45	-1.8	-72.0	72.0	71.3	0.67	107.134 CC, ES	
300.0	300.0	299.0	299.0	0.6	0.6	-172.73	-1.8	-72.0	73.7	72.6	1.12	65.867	
400.0	399.8	398.8	398.8	0.8	0.8	-173.20	-1.8	-72.0	78.9	77.4	1.57	50.288	
500.0	499.5	498.5	498.5	1.0	1.0	-173.86	-1.8	-72.0	87.6	85.6	2.02	43.262	
600.0	598.7	597.7	597.7	1.3	1.2	-174.58	-1.8	-72.0	99.7	97.2	2.48	40.167	
700.0	697.5	696.5	696.5	1.6	1.5	-175.29	-1.8	-72.0	115.3	112.4	2.94	39.181	
800.0	795.6	794.6	794.6	2.0	1.7	-175.93	-1.8	-72.0	134.3	130.9	3.40	39.448	
860.9	855.1	854.1	854.1	2.3	1.8	-176.28	-1.8	-72.0	147.6	143.9	3.69	40.023	
900.0	893.1	892.1	892.1	2.5	1.9	-176.49	-1.8	-72.0	156.5	152.6	3.87	40.455	
1,000.0	990.5	989.5	989.5	2.9	2.1	-176.94	-1.8	-72.0	179.3	175.0	4.34	41.356	
1,100.0	1,087.8	1,086.8	1,086.8	3.4	2.3	-177.28	-1.8	-72.0	202.2	197.4	4.81	42.042	
1,200.0	1,185.2	1,184.2	1,184.2	3.9	2.5	-177.56	-1.8	-72.0	225.0	219.7	5.28	42.579	
1,300.0	1,282.5	1,281.5	1,281.5	4.4	2.8	-177.79	-1.8	-72.0	247.9	242.1	5.76	43.010	
1,400.0	1,379.9	1,378.9	1,378.9	4.9	3.0	-177.97	-1.8	-72.0	270.7	264.5	6.24	43.360	
1,500.0	1,477.2	1,476.2	1,476.2	5.4	3.2	-178.13	-1.8	-72.0	293.6	286.8	6.73	43.652	
1,600.0	1,574.6	1,581.5	1,581.5	5.8	3.4	-178.18	-1.2	-71.0	315.5	308.3	7.22	43.712	
1,700.0	1,671.9	1,690.7	1,690.6	6.3	3.7	-177.90	1.8	-66.8	334.2	326.5	7.71	43.357	
1,800.0	1,769.3	1,801.1	1,800.6	6.8	3.9	-177.32	7.2	-59.0	349.7	341.5	8.21	42.596	
1,900.0	1,866.6	1,909.3	1,907.9	7.3	4.2	-176.49	14.7	-48.1	361.9	353.1	8.71	41.526	
2,000.0	1,964.0	2,008.6	2,006.3	7.8	4.4	-175.71	22.3	-37.1	373.2	364.0	9.21	40.498	
2,100.0	2,061.3	2,107.8	2,104.6	8.3	4.7	-174.96	29.9	-26.2	384.6	374.8	9.72	39.552	
2,200.0	2,158.7	2,207.0	2,203.0	8.8	5.0	-174.26	37.4	-15.3	396.0	385.8	10.24	38.681	
2,300.0	2,256.0	2,306.2	2,301.3	9.3	5.2	-173.60	45.0	-4.4	407.5	396.7	10.76	37.877	
2,400.0	2,353.4	2,405.5	2,399.6	9.8	5.5	-172.98	52.5	6.5	419.0	407.8	11.29	37.130	
2,500.0	2,450.7	2,504.7	2,498.0	10.3	5.8	-172.39	60.1	17.5	430.6	418.8	11.82	36.437	
2,600.0	2,548.1	2,603.9	2,596.3	10.8	6.1	-171.83	67.6	28.4	442.3	429.9	12.36	35.792	
2,700.0	2,645.4	2,703.2	2,694.6	11.3	6.4	-171.30	75.2	39.3	453.9	441.0	12.90	35.190	
2,800.0	2,742.8	2,802.4	2,793.0	11.8	6.7	-170.79	82.8	50.2	465.7	452.2	13.45	34.628	
2,900.0	2,840.1	2,901.6	2,891.3	12.3	7.0	-170.31	90.3	61.1	477.4	463.4	14.00	34.102	
3,000.0	2,937.5	3,000.9	2,989.7	12.8	7.3	-169.85	97.9	72.1	489.2	474.6	14.55	33.609	
3,100.0	3,034.8	3,100.1	3,088.0	13.3	7.6	-169.42	105.4	83.0	501.0	485.9	15.11	33.146	
3,200.0	3,132.2	3,199.3	3,186.3	13.8	7.9	-169.00	113.0	93.9	512.8	497.1	15.68	32.710	
3,300.0	3,229.5	3,298.5	3,284.7	14.3	8.2	-168.61	120.6	104.8	524.7	508.4	16.24	32.300	
3,400.0	3,326.9	3,397.8	3,383.0	14.8	8.6	-168.23	128.1	115.8	536.6	519.7	16.81	31.913	
3,500.0	3,424.2	3,497.0	3,481.3	15.2	8.9	-167.86	135.7	126.7	548.5	531.1	17.39	31.547	
3,600.0	3,521.6	3,596.2	3,579.7	15.7	9.2	-167.52	143.2	137.6	560.4	542.4	17.96	31.201	
3,700.0	3,618.9	3,695.5	3,678.0	16.2	9.5	-167.18	150.8	148.5	572.3	553.8	18.54	30.873	
3,800.0	3,716.3	3,791.5	3,773.2	16.7	9.8	-166.88	158.0	159.0	584.4	565.3	19.10	30.600	
3,900.0	3,813.6	3,883.2	3,864.3	17.2	10.0	-166.68	164.2	167.9	597.6	578.0	19.61	30.478	
4,000.0	3,911.0	3,974.7	3,955.2	17.7	10.2	-166.58	169.6	175.7	611.9	591.8	20.10	30.445 SF	
4,100.0	4,008.3	4,065.8	4,046.0	18.2	10.4	-166.57	174.1	182.2	627.6	607.0	20.58	30.493	
4,200.0	4,105.7	4,156.5	4,136.5	18.7	10.6	-166.63	177.8	187.5	644.4	623.3	21.05	30.617	
4,300.0	4,203.0	4,246.8	4,226.7	19.2	10.8	-166.78	180.7	191.7	662.4	640.9	21.50	30.813	
4,400.0	4,300.4	4,336.7	4,316.5	19.7	11.0	-166.99	182.7	194.6	681.7	659.7	21.94	31.074	
4,500.0	4,397.7	4,426.1	4,405.8	20.2	11.1	-167.26	183.9	196.4	702.1	679.8	22.36	31.399	
4,600.0	4,495.1	4,514.9	4,494.6	20.7	11.3	-167.58	184.4	197.0	723.8	701.0	22.78	31.779	
4,700.0	4,592.4	4,611.7	4,591.4	21.2	11.5	-167.96	184.4	197.0	746.2	723.0	23.21	32.153	
4,800.0	4,689.8	4,709.1	4,688.8	21.7	11.6	-168.31	184.4	197.0	768.6	744.9	23.65	32.495	
4,900.0	4,787.1	4,806.4	4,786.1	22.2	11.8	-168.65	184.4	197.0	791.0	766.9	24.10	32.821	

CC - Min centre to center distance or convergent point, SF - min separation factor, ES - min ellipse separation

Company:	Bayswater Exploration & Production, LLC	Local Co-ordinate Reference:	Well Mojock P-28HC
Project:	SEC.28-T7N-R64W	TVD Reference:	WELL @ 4923.5ft (RKB - 22.5')
Reference Site:	Mojack 28-C Pad (East) Sec.28-T7N-R64W	MD Reference:	WELL @ 4923.5ft (RKB - 22.5')
Site Error:	0.0ft	North Reference:	True
Reference Well:	Mojack P-28HC	Survey Calculation Method:	Minimum Curvature
Well Error:	0.0ft	Output errors are at	2.00 sigma
Reference Wellbore	Wellbore #1	Database:	Landmark
Reference Design:	Plan #2 (10-15-14)	Offset TVD Reference:	Offset Datum

Offset Design Mojack 28-C Pad (East) Sec.28-T7N-R64W - Mojack M-28HN - Wellbore #1 - Plan #2 (10-15-14)													Offset Site Error:	0.0 ft
Survey Program: 0-MWD													Offset Well Error:	0.0 ft
Reference		Offset		Semi Major Axis			Distance							Warning
Measured Depth (ft)	Vertical Depth (ft)	Measured Depth (ft)	Vertical Depth (ft)	Reference (ft)	Offset (ft)	Highside Toolface (°)	Offset Wellbore Centre +N/-S (ft)	+E/-W (ft)	Between Centres (ft)	Between Ellipses (ft)	Minimum Separation (ft)	Separation Factor		
0.0	0.0	0.0	0.0	0.0	0.0	-91.55	-1.5	-53.9	53.9					
100.0	100.0	99.0	99.0	0.1	0.1	-91.55	-1.5	-53.9	53.9	53.7	0.22	241.152		
200.0	200.0	199.0	199.0	0.3	0.3	-91.55	-1.5	-53.9	53.9	53.3	0.67	80.250 CC, ES		
300.0	300.0	299.0	299.0	0.6	0.6	-172.88	-1.5	-53.9	55.7	54.5	1.12	49.727		
400.0	399.8	398.8	398.8	0.8	0.8	-173.48	-1.5	-53.9	60.9	59.3	1.57	38.778		
500.0	499.5	498.5	498.5	1.0	1.0	-174.28	-1.5	-53.9	69.5	67.5	2.02	34.342		
600.0	598.7	597.7	597.7	1.3	1.2	-175.11	-1.5	-53.9	81.7	79.2	2.48	32.896		
700.0	697.5	696.5	696.5	1.6	1.5	-175.87	-1.5	-53.9	97.3	94.3	2.94	33.052		
800.0	795.6	794.6	794.6	2.0	1.7	-176.53	-1.5	-53.9	116.3	112.9	3.40	34.156		
860.9	855.1	854.1	854.1	2.3	1.8	-176.87	-1.5	-53.9	129.6	125.9	3.69	35.139		
900.0	893.1	892.1	892.1	2.5	1.9	-177.07	-1.5	-53.9	138.5	134.6	3.87	35.801		
1,000.0	990.5	989.5	989.5	2.9	2.1	-177.49	-1.5	-53.9	161.3	157.0	4.34	37.207		
1,100.0	1,087.8	1,092.6	1,092.6	3.4	2.3	-177.72	-1.0	-52.5	182.8	178.0	4.81	38.037		
1,200.0	1,185.2	1,197.9	1,197.7	3.9	2.6	-177.68	0.7	-47.4	200.8	195.5	5.27	38.089		
1,300.0	1,282.5	1,304.4	1,303.8	4.4	2.8	-177.43	3.6	-38.6	215.2	209.5	5.75	37.421		
1,400.0	1,379.9	1,411.9	1,410.5	4.9	3.1	-177.00	7.9	-25.9	226.0	219.8	6.25	36.192		
1,500.0	1,477.2	1,518.2	1,515.4	5.4	3.4	-176.41	13.3	-9.6	233.3	226.5	6.75	34.566		
1,600.0	1,574.6	1,618.0	1,613.7	5.8	3.7	-175.82	18.7	6.7	239.4	232.2	7.25	33.016		
1,700.0	1,671.9	1,717.8	1,712.0	6.3	4.0	-175.25	24.1	23.0	245.6	237.8	7.76	31.641		
1,800.0	1,769.3	1,817.6	1,810.3	6.8	4.3	-174.72	29.6	39.4	251.8	243.5	8.28	30.413		
1,900.0	1,866.6	1,917.4	1,908.6	7.3	4.7	-174.21	35.0	55.7	258.0	249.2	8.80	29.322		
2,000.0	1,964.0	2,017.2	2,006.9	7.8	5.0	-173.73	40.4	72.0	264.2	254.9	9.33	28.333		
2,100.0	2,061.3	2,116.9	2,105.2	8.3	5.4	-173.27	45.8	88.4	270.5	260.6	9.86	27.439		
2,200.0	2,158.7	2,216.7	2,203.4	8.8	5.7	-172.83	51.3	104.7	276.7	266.3	10.39	26.627		
2,300.0	2,256.0	2,316.5	2,301.7	9.3	6.1	-172.41	56.7	121.0	283.0	272.1	10.93	25.887		
2,400.0	2,353.4	2,416.3	2,400.0	9.8	6.5	-172.00	62.1	137.4	289.3	277.8	11.48	25.209		
2,500.0	2,450.7	2,516.1	2,498.3	10.3	6.8	-171.62	67.6	153.7	295.6	283.6	12.02	24.587		
2,600.0	2,548.1	2,615.8	2,596.6	10.8	7.2	-171.25	73.0	170.0	301.9	289.3	12.57	24.013		
2,700.0	2,645.4	2,715.6	2,694.9	11.3	7.6	-170.89	78.4	186.4	308.2	295.1	13.13	23.483		
2,800.0	2,742.8	2,815.4	2,793.2	11.8	8.0	-170.55	83.9	202.7	314.6	300.9	13.68	22.992		
2,900.0	2,840.1	2,915.2	2,891.4	12.3	8.4	-170.23	89.3	219.0	320.9	306.7	14.24	22.536		
3,000.0	2,937.5	3,015.0	2,989.7	12.8	8.7	-169.91	94.7	235.4	327.3	312.5	14.80	22.111		
3,100.0	3,034.8	3,114.8	3,088.0	13.3	9.1	-169.61	100.2	251.7	333.7	318.3	15.37	21.714		
3,200.0	3,132.2	3,214.5	3,186.3	13.8	9.5	-169.32	105.6	268.0	340.1	324.1	15.93	21.343		
3,300.0	3,229.5	3,314.3	3,284.6	14.3	9.9	-169.04	111.0	284.4	346.4	329.9	16.50	20.995		
3,400.0	3,326.9	3,414.1	3,382.9	14.8	10.3	-168.77	116.4	300.7	352.8	335.8	17.07	20.668		
3,500.0	3,424.2	3,513.9	3,481.2	15.2	10.7	-168.51	121.9	317.0	359.2	341.6	17.64	20.360		
3,600.0	3,521.6	3,613.7	3,579.4	15.7	11.1	-168.26	127.3	333.4	365.7	347.4	18.22	20.070		
3,700.0	3,618.9	3,713.4	3,677.7	16.2	11.4	-168.02	132.7	349.7	372.1	353.3	18.80	19.796		
3,800.0	3,716.3	3,813.2	3,776.0	16.7	11.8	-167.78	138.2	366.1	378.5	359.1	19.37	19.537		
3,900.0	3,813.6	3,913.0	3,874.3	17.2	12.2	-167.56	143.6	382.4	384.9	365.0	19.95	19.292		
4,000.0	3,911.0	4,012.8	3,972.6	17.7	12.6	-167.34	149.0	398.7	391.4	370.8	20.53	19.059		
4,100.0	4,008.3	4,112.6	4,070.9	18.2	13.0	-167.12	154.5	415.1	397.8	376.7	21.12	18.838		
4,200.0	4,105.7	4,212.4	4,169.2	18.7	13.4	-166.92	159.9	431.4	404.3	382.6	21.70	18.628		
4,300.0	4,203.0	4,312.1	4,267.4	19.2	13.8	-166.72	165.3	447.7	410.7	388.4	22.29	18.428		
4,400.0	4,300.4	4,411.9	4,365.7	19.7	14.2	-166.53	170.8	464.1	417.2	394.3	22.87	18.238		
4,500.0	4,397.7	4,511.7	4,464.0	20.2	14.6	-166.34	176.2	480.4	423.6	400.2	23.46	18.056		
4,600.0	4,495.1	4,600.0	4,551.1	20.7	14.9	-166.20	180.9	494.5	430.6	406.6	24.00	17.939 SF		
4,700.0	4,592.4	4,691.9	4,642.0	21.2	15.1	-166.19	185.0	506.8	440.0	415.5	24.50	17.964		
4,800.0	4,689.8	4,778.7	4,728.3	21.7	15.3	-166.32	188.0	515.8	452.3	427.3	24.95	18.130		
4,900.0	4,787.1	4,864.8	4,814.1	22.2	15.5	-166.56	190.1	522.4	467.3	441.9	25.37	18.420		
5,000.0	4,884.5	4,950.1	4,899.3	22.7	15.7	-166.91	191.5	526.4	485.1	459.3	25.77	18.826		

CC - Min centre to center distance or convergent point, SF - min separation factor, ES - min ellipse separation

Company:	Bayswater Exploration & Production, LLC	Local Co-ordinate Reference:	Well Mojack P-28HC
Project:	SEC.28-T7N-R64W	TVD Reference:	WELL @ 4923.5ft (RKB - 22.5')
Reference Site:	Mojack 28-C Pad (East) Sec.28-T7N-R64W	MD Reference:	WELL @ 4923.5ft (RKB - 22.5')
Site Error:	0.0ft	North Reference:	True
Reference Well:	Mojack P-28HC	Survey Calculation Method:	Minimum Curvature
Well Error:	0.0ft	Output errors are at	2.00 sigma
Reference Wellbore	Wellbore #1	Database:	Landmark
Reference Design:	Plan #2 (10-15-14)	Offset TVD Reference:	Offset Datum

Offset Design Mojack 28-C Pad (East) Sec.28-T7N-R64W - Mojack M-28HN - Wellbore #1 - Plan #2 (10-15-14)												Offset Site Error:	0.0 ft
Survey Program: 0-MWD												Offset Well Error:	0.0 ft
Reference		Offset		Semi Major Axis			Distance						
Measured Depth (ft)	Vertical Depth (ft)	Measured Depth (ft)	Vertical Depth (ft)	Reference (ft)	Offset (ft)	Highside Toolface (°)	Offset Wellbore Centre +N/-S (ft)	+E/-W (ft)	Between Centres (ft)	Between Ellipses (ft)	Minimum Separation (ft)	Separation Factor	Warning
5,100.0	4,981.8	5,034.3	4,983.5	23.2	15.8	-167.34	192.0	528.0	505.5	479.4	26.14	19.339	
5,200.0	5,079.2	5,129.0	5,078.2	23.7	15.9	-167.87	192.0	528.1	527.8	501.3	26.52	19.901	
5,300.0	5,176.5	5,226.4	5,175.5	24.2	16.1	-168.37	192.0	528.1	550.2	523.3	26.92	20.437	
5,400.0	5,273.9	5,323.7	5,272.9	24.7	16.2	-168.83	192.0	528.1	572.7	545.4	27.33	20.954	
5,500.0	5,371.2	5,421.1	5,370.2	25.2	16.4	-169.25	192.0	528.1	595.2	567.4	27.74	21.452	
5,600.0	5,468.6	5,518.4	5,467.6	25.7	16.5	-169.65	192.0	528.1	617.7	589.5	28.16	21.931	
5,700.0	5,565.9	5,615.8	5,564.9	26.2	16.7	-170.02	192.0	528.1	640.2	611.6	28.59	22.393	
5,800.0	5,663.3	5,713.1	5,662.3	26.7	16.8	-170.36	192.0	528.1	662.7	633.7	29.02	22.839	
5,900.0	5,760.6	5,810.5	5,759.6	27.2	17.0	-170.68	192.0	528.1	685.3	655.8	29.45	23.270	
6,000.0	5,858.0	5,907.8	5,857.0	27.7	17.2	-170.98	192.0	528.1	707.9	678.0	29.89	23.686	
6,100.0	5,955.4	6,005.2	5,954.4	28.2	17.3	-171.26	192.0	528.1	730.5	700.2	30.33	24.087	
6,200.0	6,052.7	6,102.5	6,051.7	28.7	17.5	-171.52	192.0	528.1	753.1	722.3	30.77	24.475	
6,300.0	6,150.1	6,199.9	6,149.1	29.2	17.6	-171.77	192.0	528.1	775.7	744.5	31.22	24.851	
6,400.0	6,247.4	6,297.2	6,246.4	29.7	17.8	-172.01	192.0	528.1	798.4	766.7	31.66	25.214	

Company:	Bayswater Exploration & Production, LLC	Local Co-ordinate Reference:	Well Mojack P-28HC
Project:	SEC.28-T7N-R64W	TVD Reference:	WELL @ 4923.5ft (RKB - 22.5')
Reference Site:	Mojack 28-C Pad (East) Sec.28-T7N-R64W	MD Reference:	WELL @ 4923.5ft (RKB - 22.5')
Site Error:	0.0ft	North Reference:	True
Reference Well:	Mojack P-28HC	Survey Calculation Method:	Minimum Curvature
Well Error:	0.0ft	Output errors are at	2.00 sigma
Reference Wellbore	Wellbore #1	Database:	Landmark
Reference Design:	Plan #2 (10-15-14)	Offset TVD Reference:	Offset Datum

Offset Design Mojack 28-C Pad (East) Sec.28-T7N-R64W - Mojack N-28HN - Wellbore #1 - Plan #2 (10-15-14)													Offset Site Error:	0.0 ft
Survey Program: 0-MWD													Offset Well Error:	0.0 ft
Reference		Offset		Semi Major Axis			Distance							Warning
Measured Depth (ft)	Vertical Depth (ft)	Measured Depth (ft)	Vertical Depth (ft)	Reference (ft)	Offset (ft)	Highside Toolface (°)	Offset Wellbore Centre +N/-S (ft)	+E/-W (ft)	Between Centres (ft)	Between Ellipses (ft)	Minimum Separation (ft)	Separation Factor		
0.0	0.0	0.0	0.0	0.0	0.0	-91.75	-1.1	-35.8	35.9					
100.0	100.0	99.0	99.0	0.1	0.1	-91.75	-1.1	-35.8	35.9	35.6	0.22	160.370		
200.0	200.0	199.0	199.0	0.3	0.3	-91.75	-1.1	-35.8	35.9	35.2	0.67	53.368 CC, ES		
300.0	300.0	299.0	299.0	0.6	0.6	-173.18	-1.1	-35.8	37.6	36.5	1.12	33.588		
400.0	399.8	398.8	398.8	0.8	0.8	-174.00	-1.1	-35.8	42.8	41.2	1.57	27.269		
500.0	499.5	498.5	498.5	1.0	1.0	-175.00	-1.1	-35.8	51.5	49.4	2.02	25.424		
600.0	598.7	597.7	597.7	1.3	1.2	-175.94	-1.1	-35.8	63.6	61.1	2.48	25.629		
700.0	697.5	699.1	699.1	1.6	1.5	-176.56	-0.7	-34.2	77.6	74.7	2.93	26.483		
800.0	795.6	801.1	801.0	2.0	1.7	-176.79	0.6	-29.0	91.5	88.2	3.37	27.169		
860.9	855.1	863.5	863.2	2.3	1.8	-176.81	1.8	-24.1	100.0	96.3	3.64	27.443		
900.0	893.1	903.7	903.1	2.5	1.9	-176.78	2.8	-20.2	105.1	101.3	3.82	27.509		
1,000.0	990.5	1,007.1	1,005.7	2.9	2.2	-176.54	5.8	-7.8	115.9	111.6	4.30	26.973		
1,100.0	1,087.8	1,107.4	1,104.9	3.4	2.5	-176.19	9.4	6.5	124.3	119.5	4.78	25.991		
1,200.0	1,185.2	1,207.0	1,203.5	3.9	2.8	-175.88	12.9	20.7	132.7	127.4	5.28	25.135		
1,300.0	1,282.5	1,306.7	1,302.0	4.4	3.1	-175.60	16.4	35.0	141.1	135.3	5.78	24.403		
1,400.0	1,379.9	1,406.3	1,400.6	4.9	3.4	-175.36	19.9	49.3	149.5	143.2	6.29	23.771		
1,500.0	1,477.2	1,506.0	1,499.2	5.4	3.7	-175.14	23.4	63.5	157.9	151.1	6.80	23.221		
1,600.0	1,574.6	1,605.6	1,597.7	5.8	4.1	-174.95	26.9	77.8	166.3	159.0	7.31	22.741		
1,700.0	1,671.9	1,705.3	1,696.3	6.3	4.4	-174.77	30.5	92.0	174.7	166.9	7.83	22.317		
1,800.0	1,769.3	1,804.9	1,794.8	6.8	4.8	-174.61	34.0	106.3	183.1	174.8	8.35	21.939		
1,900.0	1,866.6	1,904.5	1,893.4	7.3	5.1	-174.46	37.5	120.6	191.5	182.6	8.87	21.602		
2,000.0	1,964.0	2,004.2	1,991.9	7.8	5.4	-174.33	41.0	134.8	199.9	190.5	9.39	21.299		
2,100.0	2,061.3	2,103.8	2,090.5	8.3	5.8	-174.21	44.5	149.1	208.3	198.4	9.91	21.026		
2,200.0	2,158.7	2,203.5	2,189.1	8.8	6.1	-174.09	48.0	163.3	216.7	206.3	10.43	20.778		
2,300.0	2,256.0	2,303.1	2,287.6	9.3	6.5	-173.99	51.6	177.6	225.1	214.2	10.96	20.551		
2,400.0	2,353.4	2,402.8	2,386.2	9.8	6.8	-173.89	55.1	191.9	233.6	222.1	11.48	20.345		
2,500.0	2,450.7	2,502.4	2,484.7	10.3	7.2	-173.80	58.6	206.1	242.0	230.0	12.01	20.155		
2,600.0	2,548.1	2,602.1	2,583.3	10.8	7.5	-173.71	62.1	220.4	250.4	237.8	12.53	19.980		
2,700.0	2,645.4	2,701.7	2,681.8	11.3	7.9	-173.64	65.6	234.6	258.8	245.7	13.06	19.818		
2,800.0	2,742.8	2,801.3	2,780.4	11.8	8.2	-173.56	69.2	248.9	267.2	253.6	13.59	19.668		
2,900.0	2,840.1	2,901.0	2,879.0	12.3	8.6	-173.49	72.7	263.1	275.6	261.5	14.11	19.529		
3,000.0	2,937.5	3,000.6	2,977.5	12.8	8.9	-173.43	76.2	277.4	284.0	269.4	14.64	19.399		
3,100.0	3,034.8	3,100.3	3,076.1	13.3	9.3	-173.36	79.7	291.7	292.4	277.3	15.17	19.278		
3,200.0	3,132.2	3,199.9	3,174.6	13.8	9.7	-173.31	83.2	305.9	300.9	285.2	15.70	19.165		
3,300.0	3,229.5	3,299.6	3,273.2	14.3	10.0	-173.25	86.7	320.2	309.3	293.0	16.23	19.058		
3,400.0	3,326.9	3,399.2	3,371.7	14.8	10.4	-173.20	90.3	334.4	317.7	300.9	16.76	18.958		
3,500.0	3,424.2	3,498.9	3,470.3	15.2	10.7	-173.15	93.8	348.7	326.1	308.8	17.29	18.864		
3,600.0	3,521.6	3,598.5	3,568.8	15.7	11.1	-173.10	97.3	363.0	334.5	316.7	17.82	18.776		
3,700.0	3,618.9	3,698.2	3,667.4	16.2	11.4	-173.06	100.8	377.2	342.9	324.6	18.35	18.692		
3,800.0	3,716.3	3,797.8	3,766.0	16.7	11.8	-173.02	104.3	391.5	351.3	332.5	18.88	18.612		
3,900.0	3,813.6	3,897.4	3,864.5	17.2	12.1	-172.97	107.8	405.7	359.8	340.4	19.41	18.537		
4,000.0	3,911.0	3,997.1	3,963.1	17.7	12.5	-172.94	111.4	420.0	368.2	348.2	19.94	18.466		
4,100.0	4,008.3	4,096.7	4,061.6	18.2	12.8	-172.90	114.9	434.3	376.6	356.1	20.47	18.398		
4,200.0	4,105.7	4,196.4	4,160.2	18.7	13.2	-172.86	118.4	448.5	385.0	364.0	21.00	18.334		
4,300.0	4,203.0	4,296.0	4,258.7	19.2	13.6	-172.83	121.9	462.8	393.4	371.9	21.53	18.272		
4,400.0	4,300.4	4,395.7	4,357.3	19.7	13.9	-172.80	125.4	477.0	401.8	379.8	22.06	18.214		
4,500.0	4,397.7	4,495.3	4,455.9	20.2	14.3	-172.77	128.9	491.3	410.3	387.7	22.59	18.158		
4,600.0	4,495.1	4,595.0	4,554.4	20.7	14.6	-172.74	132.5	505.5	418.7	395.5	23.13	18.105		
4,700.0	4,592.4	4,694.6	4,653.0	21.2	15.0	-172.71	136.0	519.8	427.1	403.4	23.66	18.054		
4,800.0	4,689.8	4,794.2	4,751.5	21.7	15.3	-172.68	139.5	534.1	435.5	411.3	24.19	18.005		
4,900.0	4,787.1	4,893.9	4,850.1	22.2	15.7	-172.65	143.0	548.3	443.9	419.2	24.72	17.958		
5,000.0	4,884.5	4,993.5	4,948.6	22.7	16.0	-172.63	146.5	562.6	452.3	427.1	25.25	17.913		

CC - Min centre to center distance or convergent point, SF - min separation factor, ES - min ellipse separation

Company:	Bayswater Exploration & Production, LLC	Local Co-ordinate Reference:	Well Mojock P-28HC
Project:	SEC.28-T7N-R64W	TVD Reference:	WELL @ 4923.5ft (RKB - 22.5')
Reference Site:	Mojack 28-C Pad (East) Sec.28-T7N-R64W	MD Reference:	WELL @ 4923.5ft (RKB - 22.5')
Site Error:	0.0ft	North Reference:	True
Reference Well:	Mojack P-28HC	Survey Calculation Method:	Minimum Curvature
Well Error:	0.0ft	Output errors are at	2.00 sigma
Reference Wellbore	Wellbore #1	Database:	Landmark
Reference Design:	Plan #2 (10-15-14)	Offset TVD Reference:	Offset Datum

Offset Design Mojack 28-C Pad (East) Sec.28-T7N-R64W - Mojack N-28HN - Wellbore #1 - Plan #2 (10-15-14)												Offset Site Error:	0.0 ft
Survey Program: 0-MWD												Offset Well Error:	0.0 ft
Reference		Offset		Semi Major Axis			Distance						
Measured Depth (ft)	Vertical Depth (ft)	Measured Depth (ft)	Vertical Depth (ft)	Reference (ft)	Offset (ft)	Highside Toolface (°)	Offset Wellbore Centre +N/-S (ft)	+E/-W (ft)	Between Centres (ft)	Between Ellipses (ft)	Minimum Separation (ft)	Separation Factor	Warning
5,100.0	4,981.8	5,093.2	5,047.2	23.2	16.4	-172.60	150.1	576.8	460.8	435.0	25.78	17.870	
5,200.0	5,079.2	5,192.8	5,145.8	23.7	16.8	-172.58	153.6	591.1	469.2	442.9	26.32	17.828	
5,300.0	5,176.5	5,292.5	5,244.3	24.2	17.1	-172.56	157.1	605.4	477.6	450.7	26.85	17.788	
5,400.0	5,273.9	5,392.1	5,342.9	24.7	17.5	-172.53	160.6	619.6	486.0	458.6	27.38	17.750	
5,500.0	5,371.2	5,491.8	5,441.4	25.2	17.8	-172.51	164.1	633.9	494.4	466.5	27.91	17.713	
5,600.0	5,468.6	5,591.4	5,540.0	25.7	18.2	-172.49	167.6	648.1	502.8	474.4	28.45	17.677	
5,700.0	5,565.9	5,691.1	5,638.5	26.2	18.5	-172.47	171.2	662.4	511.3	482.3	28.98	17.643	
5,800.0	5,663.3	5,790.7	5,737.1	26.7	18.9	-172.45	174.7	676.6	519.7	490.2	29.51	17.610	
5,900.0	5,760.6	5,890.3	5,835.7	27.2	19.2	-172.43	178.2	690.9	528.1	498.1	30.04	17.578	
6,000.0	5,858.0	5,990.0	5,934.2	27.7	19.6	-172.42	181.7	705.2	536.5	505.9	30.58	17.547	
6,100.0	5,955.4	6,089.6	6,032.8	28.2	20.0	-172.40	185.2	719.4	544.9	513.8	31.11	17.517	
6,200.0	6,052.7	6,189.3	6,131.3	28.7	20.3	-172.38	188.7	733.7	553.4	521.7	31.64	17.488	
6,300.0	6,150.1	6,288.9	6,229.9	29.2	20.7	-172.37	192.3	747.9	561.8	529.6	32.17	17.460	
6,400.0	6,247.4	6,388.6	6,328.4	29.7	21.0	-172.35	195.8	762.2	570.2	537.5	32.71	17.433	
6,500.0	6,344.8	6,488.2	6,427.0	30.2	21.4	-172.33	199.3	776.5	578.6	545.4	33.24	17.407	
6,600.0	6,442.1	6,583.9	6,521.7	30.7	21.7	-172.59	200.0	790.0	587.2	553.5	33.71	17.420	
6,700.0	6,539.5	6,673.5	6,609.2	31.2	21.9	-174.18	186.4	802.0	597.2	563.2	33.98	17.574	
6,765.3	6,603.0	6,727.8	6,660.9	31.5	22.0	-175.81	170.8	808.7	605.1	570.9	34.13	17.730	
6,800.0	6,636.8	6,755.4	6,686.4	31.6	22.1	166.29	160.8	812.0	609.7	575.5	34.21	17.822	
6,850.0	6,685.5	6,794.5	6,721.6	31.8	22.1	142.34	144.4	816.3	616.6	582.2	34.38	17.933	
6,900.0	6,733.5	6,832.9	6,754.9	32.0	22.2	124.48	125.8	820.3	623.6	589.0	34.61	18.017	
6,950.0	6,780.7	6,870.6	6,786.3	32.2	22.3	112.23	105.1	823.9	630.5	595.6	34.86	18.086	
7,000.0	6,826.4	6,907.8	6,815.6	32.3	22.3	103.68	82.5	827.1	637.2	602.1	35.10	18.154	
7,050.0	6,870.3	6,950.0	6,846.9	32.5	22.4	97.34	54.5	830.4	643.7	608.4	35.33	18.220	
7,100.0	6,912.0	6,980.9	6,868.4	32.6	22.4	92.76	32.3	832.5	649.7	614.2	35.46	18.321	
7,150.0	6,951.0	7,016.9	6,891.7	32.7	22.4	89.11	5.0	834.7	655.2	619.7	35.54	18.438	
7,200.0	6,987.1	7,050.0	6,911.4	32.8	22.5	86.27	-21.5	836.4	660.2	624.6	35.52	18.587	
7,250.0	7,019.9	7,088.0	6,932.0	32.9	22.5	83.96	-53.4	838.0	664.4	629.0	35.46	18.736	
7,300.0	7,049.1	7,123.3	6,949.0	32.9	22.6	82.17	-84.3	839.1	668.0	632.6	35.35	18.896	
7,350.0	7,074.4	7,158.4	6,963.9	33.0	22.7	80.79	-116.1	839.8	670.7	635.5	35.20	19.054	
7,400.0	7,095.6	7,200.0	6,978.6	33.1	22.7	79.74	-155.0	840.3	672.7	637.6	35.08	19.177	
7,450.0	7,112.5	7,228.3	6,986.9	33.2	22.8	79.08	-182.1	840.3	673.7	638.8	34.93	19.290	
7,500.0	7,124.9	7,263.2	6,995.1	33.2	22.9	78.69	-216.0	840.1	674.0	639.1	34.85	19.339	
7,516.3	7,128.0	7,278.6	6,998.0	33.3	23.0	78.63	-231.1	839.8	673.9	639.0	34.86	19.329	
7,591.3	7,141.0	7,347.8	7,010.0	33.4	23.2	78.62	-299.2	838.6	673.3	637.6	35.68	18.872	
7,600.0	7,142.5	7,356.3	7,011.5	33.4	23.2	78.62	-307.5	838.5	673.2	637.5	35.76	18.824	
7,700.0	7,154.8	7,445.9	7,023.4	33.7	23.7	78.73	-396.4	836.9	672.3	635.4	36.88	18.231	
7,791.3	7,158.4	7,527.9	7,028.1	34.0	24.2	78.90	-478.2	835.5	671.3	633.3	38.05	17.641	
7,800.0	7,158.4	7,535.7	7,028.3	34.1	24.2	78.91	-486.0	835.4	671.2	633.0	38.20	17.572	
7,900.0	7,158.4	7,634.0	7,028.6	34.5	24.9	78.92	-584.2	833.6	670.4	630.3	40.08	16.727	
8,000.0	7,158.4	7,734.0	7,028.8	35.1	25.8	78.93	-684.2	831.9	669.7	627.4	42.22	15.863	
8,100.0	7,158.4	7,834.0	7,029.1	35.8	26.8	78.94	-784.2	830.1	668.9	624.3	44.57	15.008	
8,200.0	7,158.4	7,933.9	7,029.3	36.5	28.0	78.94	-884.2	828.4	668.1	621.0	47.11	14.183	
8,300.0	7,158.4	8,033.9	7,029.5	37.4	29.2	78.95	-984.2	826.6	667.4	617.5	49.80	13.400	
8,400.0	7,158.4	8,133.9	7,029.7	38.3	30.4	78.96	-1,084.1	824.9	666.6	614.0	52.63	12.665	
8,500.0	7,158.4	8,233.9	7,029.9	39.3	31.8	78.96	-1,184.1	823.1	665.8	610.2	55.57	11.981	
8,600.0	7,158.4	8,333.9	7,030.1	40.4	33.2	78.97	-1,284.1	821.4	665.0	606.4	58.61	11.348	
8,700.0	7,158.4	8,433.9	7,030.4	41.6	34.7	78.98	-1,384.1	819.6	664.3	602.6	61.72	10.762	
8,800.0	7,158.4	8,533.9	7,030.6	42.8	36.2	78.98	-1,484.1	817.9	663.5	598.6	64.91	10.222	
8,900.0	7,158.4	8,633.9	7,030.8	44.0	37.7	78.99	-1,584.0	816.1	662.7	594.6	68.16	9.724	
9,000.0	7,158.4	8,733.9	7,031.0	45.4	39.3	79.00	-1,684.0	814.4	662.0	590.5	71.46	9.264	
9,100.0	7,158.4	8,833.9	7,031.2	46.7	40.9	79.00	-1,784.0	812.6	661.2	586.4	74.80	8.839	

CC - Min centre to center distance or convergent point, SF - min separation factor, ES - min ellipse separation

Company:	Bayswater Exploration & Production, LLC	Local Co-ordinate Reference:	Well Mojack P-28HC
Project:	SEC.28-T7N-R64W	TVD Reference:	WELL @ 4923.5ft (RKB - 22.5')
Reference Site:	Mojack 28-C Pad (East) Sec.28-T7N-R64W	MD Reference:	WELL @ 4923.5ft (RKB - 22.5')
Site Error:	0.0ft	North Reference:	True
Reference Well:	Mojack P-28HC	Survey Calculation Method:	Minimum Curvature
Well Error:	0.0ft	Output errors are at	2.00 sigma
Reference Wellbore	Wellbore #1	Database:	Landmark
Reference Design:	Plan #2 (10-15-14)	Offset TVD Reference:	Offset Datum

Offset Design Mojack 28-C Pad (East) Sec.28-T7N-R64W - Mojack N-28HN - Wellbore #1 - Plan #2 (10-15-14)												Offset Site Error:	0.0ft
Survey Program: 0-MWMD												Offset Well Error:	0.0ft
Reference		Offset		Semi Major Axis			Distance						
Measured Depth (ft)	Vertical Depth (ft)	Measured Depth (ft)	Vertical Depth (ft)	Reference (ft)	Offset (ft)	Highside Toolface (°)	Offset Wellbore Centre +N/-S (ft)	+E/-W (ft)	Between Centres (ft)	Between Ellipses (ft)	Minimum Separation (ft)	Separation Factor	Warning
9,200.0	7,158.4	8,933.9	7,031.5	48.1	42.5	79.01	-1,884.0	810.9	660.4	582.2	78.18	8.447	
9,300.0	7,158.4	9,033.9	7,031.7	49.6	44.2	79.02	-1,984.0	809.1	659.7	578.1	81.60	8.084	
9,400.0	7,158.4	9,133.9	7,031.9	51.0	45.9	79.02	-2,083.9	807.3	658.9	573.8	85.05	7.747	
9,500.0	7,158.4	9,233.9	7,032.1	52.6	47.5	79.03	-2,183.9	805.6	658.1	569.6	88.53	7.434	
9,600.0	7,158.3	9,333.9	7,032.3	54.1	49.3	79.04	-2,283.9	803.8	657.4	565.3	92.02	7.143	
9,700.0	7,158.3	9,433.9	7,032.6	55.6	51.0	79.04	-2,383.9	802.1	656.6	561.0	95.54	6.872	
9,800.0	7,158.3	9,533.9	7,032.8	57.2	52.7	79.05	-2,483.9	800.3	655.8	556.7	99.08	6.619	
9,900.0	7,158.3	9,633.9	7,033.0	58.8	54.5	79.06	-2,583.9	798.6	655.0	552.4	102.64	6.382	
10,000.0	7,158.3	9,733.9	7,033.2	60.4	56.2	79.07	-2,683.8	796.8	654.3	548.1	106.21	6.160	
10,100.0	7,158.3	9,833.9	7,033.4	62.1	58.0	79.07	-2,783.8	795.1	653.5	543.7	109.80	5.952	
10,200.0	7,158.3	9,933.9	7,033.7	63.7	59.8	79.08	-2,883.8	793.3	652.7	539.3	113.39	5.756	
10,300.0	7,158.3	10,033.9	7,033.9	65.4	61.6	79.09	-2,983.8	791.6	652.0	535.0	117.00	5.572	
10,400.0	7,158.3	10,133.9	7,034.1	67.1	63.4	79.09	-3,083.8	789.8	651.2	530.6	120.62	5.399	
10,500.0	7,158.3	10,233.9	7,034.3	68.8	65.2	79.10	-3,183.7	788.1	650.4	526.2	124.25	5.235	
10,600.0	7,158.3	10,333.9	7,034.5	70.5	67.0	79.11	-3,283.7	786.3	649.7	521.8	127.89	5.080	
10,700.0	7,158.3	10,433.9	7,034.8	72.2	68.8	79.11	-3,383.7	784.6	648.9	517.4	131.53	4.933	
10,800.0	7,158.3	10,533.9	7,035.0	73.9	70.6	79.12	-3,483.7	782.8	648.1	512.9	135.19	4.794	
10,900.0	7,158.3	10,633.9	7,035.2	75.7	72.5	79.13	-3,583.7	781.0	647.4	508.5	138.85	4.662	
11,000.0	7,158.3	10,733.9	7,035.4	77.4	74.3	79.14	-3,683.6	779.3	646.6	504.1	142.51	4.537	
11,100.0	7,158.3	10,833.9	7,035.6	79.2	76.1	79.14	-3,783.6	777.5	645.8	499.6	146.18	4.418	
11,200.0	7,158.3	10,933.9	7,035.9	81.0	78.0	79.15	-3,883.6	775.8	645.1	495.2	149.86	4.304	
11,300.0	7,158.3	11,033.9	7,036.1	82.7	79.8	79.16	-3,983.6	774.0	644.3	490.7	153.54	4.196	
11,400.0	7,158.3	11,133.9	7,036.3	84.5	81.7	79.16	-4,083.6	772.3	643.5	486.3	157.23	4.093	
11,500.0	7,158.3	11,233.8	7,036.5	86.3	83.5	79.17	-4,183.6	770.5	642.7	481.8	160.92	3.994	
11,600.0	7,158.3	11,333.8	7,036.7	88.1	85.4	79.18	-4,283.5	768.8	642.0	477.4	164.62	3.900	
11,700.0	7,158.3	11,433.8	7,037.0	89.9	87.2	79.19	-4,383.5	767.0	641.2	472.9	168.32	3.810	
11,800.0	7,158.2	11,533.8	7,037.2	91.7	89.1	79.19	-4,483.5	765.3	640.4	468.4	172.02	3.723	
11,900.0	7,158.2	11,633.8	7,037.4	93.5	90.9	79.20	-4,583.5	763.5	639.7	463.9	175.73	3.640	
12,000.0	7,158.2	11,733.8	7,037.6	95.3	92.8	79.21	-4,683.5	761.8	638.9	459.5	179.44	3.561	
12,100.0	7,158.2	11,833.8	7,037.8	97.1	94.7	79.22	-4,783.4	760.0	638.1	455.0	183.15	3.484	
12,200.0	7,158.2	11,933.8	7,038.1	98.9	96.5	79.22	-4,883.4	758.3	637.4	450.5	186.87	3.411	
12,300.0	7,158.2	12,033.8	7,038.3	100.7	98.4	79.23	-4,983.4	756.5	636.6	446.0	190.58	3.340	
12,400.0	7,158.2	12,133.8	7,038.5	102.5	100.3	79.24	-5,083.4	754.8	635.8	441.5	194.30	3.272	
12,500.0	7,158.2	12,233.8	7,038.7	104.4	102.1	79.24	-5,183.4	753.0	635.1	437.0	198.03	3.207	
12,600.0	7,158.2	12,333.8	7,038.9	106.2	104.0	79.25	-5,283.4	751.2	634.3	432.5	201.75	3.144	
12,700.0	7,158.2	12,433.8	7,039.1	108.0	105.9	79.26	-5,383.3	749.5	633.5	428.0	205.48	3.083	
12,800.0	7,158.2	12,533.8	7,039.4	109.9	107.8	79.27	-5,483.3	747.7	632.8	423.5	209.21	3.024	
12,900.0	7,158.2	12,633.8	7,039.6	111.7	109.6	79.27	-5,583.3	746.0	632.0	419.0	212.94	2.968	
13,000.0	7,158.2	12,733.8	7,039.8	113.5	111.5	79.28	-5,683.3	744.2	631.2	414.5	216.68	2.913	
13,100.0	7,158.2	12,833.8	7,040.0	115.4	113.4	79.29	-5,783.3	742.5	630.4	410.0	220.41	2.860	
13,200.0	7,158.2	12,933.8	7,040.2	117.2	115.3	79.30	-5,883.2	740.7	629.7	405.5	224.15	2.809	
13,300.0	7,158.2	13,033.8	7,040.5	119.1	117.2	79.30	-5,983.2	739.0	628.9	401.0	227.89	2.760	
13,400.0	7,158.2	13,133.8	7,040.7	120.9	119.1	79.31	-6,083.2	737.2	628.1	396.5	231.63	2.712	
13,500.0	7,158.2	13,233.8	7,040.9	122.8	120.9	79.32	-6,183.2	735.5	627.4	392.0	235.37	2.666	
13,600.0	7,158.2	13,333.8	7,041.1	124.6	122.8	79.33	-6,283.2	733.7	626.6	387.5	239.11	2.621	
13,700.0	7,158.2	13,433.8	7,041.3	126.5	124.7	79.34	-6,383.1	732.0	625.8	383.0	242.86	2.577	
13,800.0	7,158.2	13,533.8	7,041.6	128.3	126.6	79.34	-6,483.1	730.2	625.1	378.5	246.60	2.535	
13,900.0	7,158.1	13,633.8	7,041.8	130.2	128.5	79.35	-6,583.1	728.5	624.3	374.0	250.35	2.494	
14,000.0	7,158.1	13,733.8	7,042.0	132.1	130.4	79.36	-6,683.1	726.7	623.5	369.4	254.10	2.454	
14,100.0	7,158.1	13,833.8	7,042.2	133.9	132.3	79.37	-6,783.1	724.9	622.8	364.9	257.85	2.415	
14,200.0	7,158.1	13,933.8	7,042.4	135.8	134.2	79.37	-6,883.1	723.2	622.0	360.4	261.60	2.378	
14,300.0	7,158.1	14,033.8	7,042.7	137.6	136.1	79.38	-6,983.0	721.4	621.2	355.9	265.35	2.341	

CC - Min centre to center distance or convergent point, SF - min separation factor, ES - min ellipse separation

Company:	Bayswater Exploration & Production, LLC	Local Co-ordinate Reference:	Well Mojack P-28HC
Project:	SEC.28-T7N-R64W	TVD Reference:	WELL @ 4923.5ft (RKB - 22.5')
Reference Site:	Mojack 28-C Pad (East) Sec.28-T7N-R64W	MD Reference:	WELL @ 4923.5ft (RKB - 22.5')
Site Error:	0.0ft	North Reference:	True
Reference Well:	Mojack P-28HC	Survey Calculation Method:	Minimum Curvature
Well Error:	0.0ft	Output errors are at	2.00 sigma
Reference Wellbore	Wellbore #1	Database:	Landmark
Reference Design:	Plan #2 (10-15-14)	Offset TVD Reference:	Offset Datum

Offset Design Mojack 28-C Pad (East) Sec.28-T7N-R64W - Mojack N-28HN - Wellbore #1 - Plan #2 (10-15-14)												Offset Site Error:	0.0 ft
Survey Program: 0-MWD												Offset Well Error:	0.0 ft
Reference		Offset		Semi Major Axis			Distance						
Measured Depth (ft)	Vertical Depth (ft)	Measured Depth (ft)	Vertical Depth (ft)	Reference (ft)	Offset (ft)	Highside Toolface (°)	Offset Wellbore Centre +N/-S (ft)	+E/-W (ft)	Between Centres (ft)	Between Ellipses (ft)	Minimum Separation (ft)	Separation Factor	Warning
14,400.0	7,158.1	14,133.8	7,042.9	139.5	137.9	79.39	-7,083.0	719.7	620.5	351.4	269.10	2.306	
14,500.0	7,158.1	14,233.8	7,043.1	141.4	139.8	79.40	-7,183.0	717.9	619.7	346.8	272.85	2.271	
14,600.0	7,158.1	14,333.8	7,043.3	143.3	141.7	79.40	-7,283.0	716.2	618.9	342.3	276.61	2.238	
14,700.0	7,158.1	14,433.8	7,043.5	145.1	143.6	79.41	-7,383.0	714.4	618.2	337.8	280.36	2.205	
14,800.0	7,158.1	14,533.8	7,043.8	147.0	145.5	79.42	-7,482.9	712.7	617.4	333.3	284.12	2.173	
14,900.0	7,158.1	14,633.7	7,044.0	148.9	147.4	79.43	-7,582.9	710.9	616.6	328.7	287.88	2.142	
15,000.0	7,158.1	14,733.7	7,044.2	150.7	149.3	79.44	-7,682.9	709.2	615.8	324.2	291.64	2.112	
15,100.0	7,158.1	14,833.7	7,044.4	152.6	151.2	79.44	-7,782.9	707.4	615.1	319.7	295.40	2.082	
15,200.0	7,158.1	14,933.7	7,044.6	154.5	153.1	79.45	-7,882.9	705.7	614.3	315.2	299.16	2.053	
15,300.0	7,158.1	15,033.7	7,044.9	156.4	155.0	79.46	-7,982.8	703.9	613.5	310.6	302.92	2.025	
15,400.0	7,158.1	15,132.4	7,044.9	158.2	156.9	79.45	-8,081.5	702.2	612.8	306.2	306.64	1.998	
15,500.0	7,158.1	15,231.8	7,043.5	160.1	158.8	79.31	-8,180.9	700.4	612.3	302.1	310.24	1.974	
15,600.0	7,158.1	15,331.8	7,042.1	162.0	160.7	79.17	-8,280.9	698.7	611.9	298.0	313.85	1.950	
15,700.0	7,158.1	15,431.8	7,040.6	163.9	162.6	79.02	-8,380.8	696.9	611.4	294.0	317.46	1.926	
15,800.0	7,158.1	15,531.8	7,039.2	165.8	164.5	78.88	-8,480.8	695.2	611.0	289.9	321.06	1.903	
15,900.0	7,158.1	15,631.8	7,037.8	167.6	166.4	78.73	-8,580.8	693.4	610.5	285.9	324.65	1.881	
16,000.0	7,158.1	15,731.8	7,036.3	169.5	168.3	78.59	-8,680.7	691.7	610.1	281.9	328.24	1.859	
16,100.0	7,158.0	15,831.8	7,034.9	171.4	170.2	78.44	-8,780.7	689.9	609.7	277.8	331.83	1.837	
16,200.0	7,158.0	15,931.8	7,033.5	173.3	172.1	78.30	-8,880.6	688.1	609.2	273.8	335.41	1.816	
16,300.0	7,158.0	16,031.7	7,032.0	175.2	174.0	78.15	-8,980.6	686.4	608.8	269.8	338.99	1.796	
16,400.0	7,158.0	16,131.7	7,030.6	177.1	175.9	78.00	-9,080.6	684.6	608.4	265.8	342.56	1.776	
16,500.0	7,158.0	16,231.7	7,029.1	178.9	177.8	77.86	-9,180.5	682.9	608.0	261.8	346.12	1.756	
16,600.0	7,158.0	16,331.7	7,027.7	180.8	179.7	77.71	-9,280.5	681.1	607.5	257.9	349.68	1.737	
16,700.0	7,158.0	16,431.7	7,026.3	182.7	181.6	77.56	-9,380.5	679.4	607.1	253.9	353.24	1.719	
16,800.0	7,158.0	16,531.7	7,024.8	184.6	183.5	77.42	-9,480.4	677.6	606.7	249.9	356.79	1.700	
16,900.0	7,158.0	16,631.7	7,023.4	186.5	185.4	77.27	-9,580.4	675.9	606.3	246.0	360.34	1.683	
17,000.0	7,158.0	16,731.6	7,022.0	188.4	187.3	77.12	-9,680.3	674.1	605.9	242.0	363.87	1.665	
17,100.0	7,158.0	16,831.6	7,020.5	190.3	189.2	76.97	-9,780.3	672.3	605.5	238.1	367.41	1.648	
17,121.4	7,158.0	16,853.0	7,020.2	190.7	189.6	76.94	-9,801.7	672.0	605.4	237.3	368.16	1.644 SF	

Company:	Bayswater Exploration & Production, LLC	Local Co-ordinate Reference:	Well Mojock P-28HC
Project:	SEC.28-T7N-R64W	TVD Reference:	WELL @ 4923.5ft (RKB - 22.5')
Reference Site:	Mojack 28-C Pad (East) Sec.28-T7N-R64W	MD Reference:	WELL @ 4923.5ft (RKB - 22.5')
Site Error:	0.0ft	North Reference:	True
Reference Well:	Mojack P-28HC	Survey Calculation Method:	Minimum Curvature
Well Error:	0.0ft	Output errors are at	2.00 sigma
Reference Wellbore	Wellbore #1	Database:	Landmark
Reference Design:	Plan #2 (10-15-14)	Offset TVD Reference:	Offset Datum

Offset Design Mojack 28-C Pad (East) Sec.28-T7N-R64W - Mojack O-28HN - Wellbore #1 - Plan #2 (10-15-14)													Offset Site Error: 0.0ft
Survey Program: 0-MWD													Offset Well Error: 0.0ft
Measured Depth (ft)	Vertical Depth (ft)	Measured Depth (ft)	Vertical Depth (ft)	Reference (ft)	Offset (ft)	Highside Toolface (°)	Offset Wellbore Centre +N/-S (ft)	+E/-W (ft)	Between Centres (ft)	Between Ellipses (ft)	Minimum Separation (ft)	Separation Factor	Warning
0.0	0.0	0.0	0.0	0.0	0.0	-91.17	-0.4	-17.8	17.8	17.8	0.00	N/A	
100.0	100.0	99.0	99.0	0.1	0.1	-91.17	-0.4	-17.8	17.8	17.6	0.22	79.543	
200.0	200.0	199.0	199.0	0.3	0.3	-91.17	-0.4	-17.8	17.8	17.1	0.67	26.470 CC	
300.0	300.0	299.0	299.0	0.6	0.6	-172.97	-0.4	-17.8	19.5	18.4	1.12	17.438	
400.0	399.8	398.8	398.8	0.8	0.8	-174.44	-0.4	-17.8	24.7	23.2	1.57	15.751	
500.0	499.5	499.6	499.5	1.0	1.0	-175.57	0.0	-16.1	31.7	29.7	2.01	15.780	
600.0	598.7	600.6	600.4	1.3	1.2	-176.11	0.9	-10.9	38.7	36.2	2.44	15.830	
700.0	697.5	701.8	701.2	1.6	1.5	-176.34	2.6	-2.2	45.6	42.7	2.89	15.788	
800.0	795.6	803.3	802.0	2.0	1.7	-176.39	4.9	10.1	52.5	49.2	3.35	15.685	
860.9	855.1	865.2	863.2	2.3	1.9	-176.35	6.7	19.2	56.7	53.1	3.64	15.593	
900.0	893.1	905.0	902.4	2.5	2.1	-176.29	7.9	25.8	59.1	55.3	3.83	15.451	
1,000.0	990.5	1,005.9	1,001.5	2.9	2.4	-175.99	11.4	44.4	63.4	59.1	4.33	14.662	
1,100.0	1,087.8	1,105.8	1,099.6	3.4	2.8	-175.70	15.0	63.0	67.4	62.6	4.84	13.939	
1,200.0	1,185.2	1,205.7	1,197.7	3.9	3.2	-175.45	18.5	81.7	71.4	66.0	5.35	13.338	
1,300.0	1,282.5	1,305.6	1,295.8	4.4	3.6	-175.22	22.0	100.4	75.4	69.5	5.87	12.830	
1,400.0	1,379.9	1,405.5	1,393.9	4.9	4.0	-175.02	25.6	119.0	79.4	73.0	6.40	12.402	
1,500.0	1,477.2	1,505.5	1,492.0	5.4	4.4	-174.83	29.1	137.7	83.3	76.4	6.93	12.031	
1,600.0	1,574.6	1,605.4	1,590.0	5.8	4.8	-174.67	32.7	156.3	87.3	79.9	7.46	11.709	
1,700.0	1,671.9	1,705.3	1,688.1	6.3	5.2	-174.51	36.2	175.0	91.3	83.3	7.99	11.427	
1,800.0	1,769.3	1,805.2	1,786.2	6.8	5.7	-174.37	39.7	193.7	95.3	86.8	8.53	11.178	
1,900.0	1,866.6	1,905.1	1,884.3	7.3	6.1	-174.24	43.3	212.3	99.3	90.2	9.06	10.956	
2,000.0	1,964.0	2,005.1	1,982.4	7.8	6.5	-174.12	46.8	231.0	103.3	93.7	9.60	10.758	
2,100.0	2,061.3	2,105.0	2,080.5	8.3	6.9	-174.01	50.4	249.7	107.3	97.2	10.14	10.580	
2,200.0	2,158.7	2,204.9	2,178.6	8.8	7.3	-173.91	53.9	268.3	111.3	100.6	10.68	10.420	
2,300.0	2,256.0	2,304.8	2,276.7	9.3	7.8	-173.82	57.4	287.0	115.3	104.1	11.22	10.274	
2,400.0	2,353.4	2,404.7	2,374.8	9.8	8.2	-173.73	61.0	305.7	119.3	107.5	11.76	10.140	
2,500.0	2,450.7	2,504.7	2,472.9	10.3	8.6	-173.64	64.5	324.3	123.3	111.0	12.30	10.018	
2,600.0	2,548.1	2,604.6	2,571.0	10.8	9.0	-173.57	68.1	343.0	127.3	114.4	12.85	9.906	
2,700.0	2,645.4	2,704.5	2,669.1	11.3	9.5	-173.49	71.6	361.6	131.3	117.9	13.39	9.803	
2,800.0	2,742.8	2,804.4	2,767.2	11.8	9.9	-173.43	75.2	380.3	135.3	121.3	13.93	9.707	
2,900.0	2,840.1	2,904.3	2,865.3	12.3	10.3	-173.36	78.7	399.0	139.2	124.8	14.48	9.618	
3,000.0	2,937.5	3,004.3	2,963.4	12.8	10.7	-173.30	82.2	417.6	143.2	128.2	15.02	9.536	
3,100.0	3,034.8	3,104.2	3,061.5	13.3	11.2	-173.24	85.8	436.3	147.2	131.7	15.57	9.459	
3,200.0	3,132.2	3,204.1	3,159.6	13.8	11.6	-173.19	89.3	455.0	151.2	135.1	16.11	9.387	
3,300.0	3,229.5	3,304.0	3,257.7	14.3	12.0	-173.13	92.9	473.6	155.2	138.6	16.66	9.320	
3,400.0	3,326.9	3,403.9	3,355.8	14.8	12.4	-173.08	96.4	492.3	159.2	142.0	17.20	9.257	
3,500.0	3,424.2	3,503.9	3,453.9	15.2	12.9	-173.04	99.9	511.0	163.2	145.5	17.75	9.197	
3,600.0	3,521.6	3,603.8	3,552.0	15.7	13.3	-172.99	103.5	529.6	167.2	148.9	18.29	9.141	
3,700.0	3,618.9	3,703.7	3,650.1	16.2	13.7	-172.95	107.0	548.3	171.2	152.4	18.84	9.088	
3,800.0	3,716.3	3,803.6	3,748.2	16.7	14.1	-172.91	110.6	567.0	175.2	155.8	19.38	9.038	
3,900.0	3,813.6	3,903.5	3,846.3	17.2	14.6	-172.87	114.1	585.6	179.2	159.3	19.93	8.991	
4,000.0	3,911.0	4,003.5	3,944.4	17.7	15.0	-172.83	117.6	604.3	183.2	162.7	20.48	8.946	
4,100.0	4,008.3	4,103.4	4,042.5	18.2	15.4	-172.80	121.2	622.9	187.2	166.2	21.02	8.904	
4,200.0	4,105.7	4,203.3	4,140.6	18.7	15.8	-172.76	124.7	641.6	191.2	169.6	21.57	8.863	
4,300.0	4,203.0	4,303.2	4,238.7	19.2	16.3	-172.73	128.3	660.3	195.2	173.1	22.12	8.825	
4,400.0	4,300.4	4,403.1	4,336.8	19.7	16.7	-172.70	131.8	678.9	199.2	176.5	22.66	8.788	
4,500.0	4,397.7	4,503.1	4,434.9	20.2	17.1	-172.67	135.3	697.6	203.2	180.0	23.21	8.753	
4,600.0	4,495.1	4,603.0	4,533.0	20.7	17.6	-172.64	138.9	716.3	207.2	183.4	23.76	8.720	
4,700.0	4,592.4	4,702.9	4,631.1	21.2	18.0	-172.61	142.4	734.9	211.2	186.9	24.31	8.688	
4,800.0	4,689.8	4,802.8	4,729.2	21.7	18.4	-172.59	146.0	753.6	215.2	190.3	24.85	8.657	
4,900.0	4,787.1	4,902.7	4,827.3	22.2	18.8	-172.56	149.5	772.3	219.2	193.8	25.40	8.628	
5,000.0	4,884.5	5,002.7	4,925.4	22.7	19.3	-172.53	153.0	790.9	223.2	197.2	25.95	8.600	

CC - Min centre to center distance or convergent point, SF - min separation factor, ES - min ellipse separation

Company:	Bayswater Exploration & Production, LLC	Local Co-ordinate Reference:	Well Mojock P-28HC
Project:	SEC.28-T7N-R64W	TVD Reference:	WELL @ 4923.5ft (RKB - 22.5')
Reference Site:	Mojack 28-C Pad (East) Sec.28-T7N-R64W	MD Reference:	WELL @ 4923.5ft (RKB - 22.5')
Site Error:	0.0ft	North Reference:	True
Reference Well:	Mojack P-28HC	Survey Calculation Method:	Minimum Curvature
Well Error:	0.0ft	Output errors are at	2.00 sigma
Reference Wellbore	Wellbore #1	Database:	Landmark
Reference Design:	Plan #2 (10-15-14)	Offset TVD Reference:	Offset Datum

Offset Design Mojack 28-C Pad (East) Sec.28-T7N-R64W - Mojack O-28HN - Wellbore #1 - Plan #2 (10-15-14)												Offset Site Error:	0.0 ft
Survey Program: 0-MWD												Offset Well Error:	0.0 ft
Reference		Offset		Semi Major Axis			Distance						
Measured Depth (ft)	Vertical Depth (ft)	Measured Depth (ft)	Vertical Depth (ft)	Reference (ft)	Offset (ft)	Highside Toolface (°)	Offset Wellbore Centre +N/-S (ft)	+E/-W (ft)	Between Centres (ft)	Between Ellipses (ft)	Minimum Separation (ft)	Separation Factor	Warning
5,100.0	4,981.8	5,102.6	5,023.5	23.2	19.7	-172.51	156.6	809.6	227.2	200.7	26.50	8.573	
5,200.0	5,079.2	5,202.5	5,121.6	23.7	20.1	-172.49	160.1	828.2	231.1	204.1	27.04	8.547	
5,300.0	5,176.5	5,302.4	5,219.7	24.2	20.5	-172.46	163.7	846.9	235.1	207.6	27.59	8.522	
5,400.0	5,273.9	5,402.3	5,317.8	24.7	21.0	-172.44	167.2	865.6	239.1	211.0	28.14	8.498	
5,500.0	5,371.2	5,502.3	5,415.9	25.2	21.4	-172.42	170.7	884.2	243.1	214.5	28.69	8.475	
5,600.0	5,468.6	5,602.2	5,514.0	25.7	21.8	-172.40	174.3	902.9	247.1	217.9	29.24	8.453	
5,700.0	5,565.9	5,702.1	5,612.0	26.2	22.3	-172.38	177.8	921.6	251.1	221.3	29.78	8.432	
5,800.0	5,663.3	5,802.0	5,710.1	26.7	22.7	-172.36	181.4	940.2	255.1	224.8	30.33	8.411	
5,900.0	5,760.6	5,901.9	5,808.2	27.2	23.1	-172.34	184.9	958.9	259.1	228.2	30.88	8.391	
6,000.0	5,858.0	6,001.9	5,906.3	27.7	23.5	-172.33	188.4	977.6	263.1	231.7	31.43	8.372	
6,100.0	5,955.4	6,101.8	6,004.4	28.2	24.0	-172.31	192.0	996.2	267.1	235.1	31.98	8.354	
6,200.0	6,052.7	6,201.7	6,102.5	28.7	24.4	-172.29	195.5	1,014.9	271.1	238.6	32.53	8.336	
6,300.0	6,150.1	6,301.6	6,200.6	29.2	24.8	-172.28	199.1	1,033.6	275.1	242.0	33.07	8.318	
6,400.0	6,247.4	6,401.5	6,298.7	29.7	25.2	-172.26	202.6	1,052.2	279.1	245.5	33.62	8.301	
6,500.0	6,344.8	6,501.5	6,396.8	30.2	25.7	-172.24	206.1	1,070.9	283.1	248.9	34.17	8.285	
6,600.0	6,442.1	6,601.4	6,494.9	30.7	26.1	-172.23	209.7	1,089.5	287.1	252.4	34.72	8.269	
6,700.0	6,539.5	6,698.2	6,590.0	31.2	26.5	-173.10	208.6	1,107.4	291.5	256.3	35.12	8.299	
6,765.3	6,603.0	6,758.7	6,648.8	31.5	26.6	-175.28	199.4	1,118.0	295.4	260.2	35.21	8.388	
6,800.0	6,636.8	6,789.8	6,678.5	31.6	26.7	166.56	191.9	1,123.2	297.9	262.7	35.28	8.445	
6,850.0	6,685.5	6,834.0	6,719.9	31.8	26.8	142.26	178.3	1,130.2	301.9	266.4	35.46	8.514	
6,900.0	6,733.5	6,877.4	6,759.4	32.0	26.9	124.09	161.5	1,136.7	306.0	270.3	35.72	8.568	
6,950.0	6,780.7	6,920.1	6,796.9	32.2	27.0	111.56	141.8	1,142.7	310.3	274.2	36.02	8.614	
7,000.0	6,826.4	6,962.3	6,832.2	32.3	27.1	102.77	119.3	1,148.1	314.5	278.2	36.30	8.663	
7,050.0	6,870.3	7,004.0	6,865.2	32.5	27.2	96.34	94.4	1,153.0	318.6	282.1	36.54	8.721	
7,100.0	6,912.0	7,045.2	6,895.8	32.6	27.3	91.46	67.2	1,157.3	322.6	285.9	36.69	8.792	
7,150.0	6,951.0	7,086.0	6,924.0	32.7	27.3	87.67	37.9	1,161.0	326.3	289.5	36.75	8.879	
7,200.0	6,987.1	7,126.5	6,949.6	32.8	27.4	84.66	6.8	1,164.1	329.6	292.9	36.70	8.982	
7,250.0	7,019.9	7,166.6	6,972.7	32.9	27.4	82.27	-26.0	1,166.7	332.6	296.0	36.51	9.108	
7,300.0	7,049.1	7,206.6	6,993.2	32.9	27.5	80.39	-60.2	1,168.6	335.0	298.7	36.28	9.233	
7,350.0	7,074.4	7,250.0	7,012.4	33.0	27.6	78.90	-99.1	1,170.1	337.0	301.0	36.02	9.357	
7,400.0	7,095.6	7,286.0	7,025.8	33.1	27.6	77.85	-132.4	1,170.9	338.4	302.7	35.71	9.476	
7,450.0	7,112.5	7,325.5	7,038.0	33.2	27.7	77.10	-170.0	1,171.1	339.2	303.8	35.45	9.570	
7,500.0	7,124.9	7,365.0	7,047.3	33.2	27.8	76.67	-208.4	1,170.8	339.5	304.2	35.24	9.632	
7,516.3	7,128.0	7,379.2	7,050.0	33.3	27.8	76.59	-222.4	1,170.5	339.4	304.2	35.20	9.642	
7,591.3	7,141.0	7,452.4	7,062.7	33.4	28.0	76.58	-294.4	1,169.0	339.2	303.2	36.01	9.419	
7,600.0	7,142.5	7,460.7	7,064.1	33.4	28.0	76.58	-302.6	1,168.8	339.1	303.1	36.09	9.398	
7,700.0	7,154.8	7,554.3	7,076.1	33.7	28.3	76.67	-395.4	1,166.8	338.7	301.6	37.09	9.132	
7,791.3	7,158.4	7,639.8	7,080.3	34.0	28.8	76.82	-480.8	1,165.0	338.1	300.0	38.16	8.862	
7,800.0	7,158.4	7,648.0	7,080.4	34.1	28.8	76.83	-488.9	1,164.8	338.1	299.8	38.30	8.828	
7,900.0	7,158.4	7,747.2	7,080.0	34.5	29.4	76.75	-588.1	1,162.7	337.8	297.7	40.09	8.426	
8,000.0	7,158.4	7,847.2	7,079.5	35.1	30.1	76.66	-688.1	1,160.6	337.6	295.4	42.13	8.013	
8,100.0	7,158.4	7,947.2	7,079.1	35.8	30.9	76.57	-788.1	1,158.5	337.3	292.9	44.39	7.600	
8,200.0	7,158.4	8,047.2	7,078.6	36.5	31.8	76.47	-888.0	1,156.4	337.1	290.2	46.83	7.198	
8,300.0	7,158.4	8,147.2	7,078.1	37.4	32.9	76.38	-988.0	1,154.2	336.8	287.4	49.43	6.815	
8,400.0	7,158.4	8,247.2	7,077.6	38.3	34.0	76.29	-1,088.0	1,152.1	336.6	284.4	52.16	6.453	
8,500.0	7,158.4	8,347.2	7,077.1	39.3	35.1	76.20	-1,188.0	1,150.0	336.3	281.3	55.01	6.114	
8,600.0	7,158.4	8,447.2	7,076.7	40.4	36.4	76.10	-1,287.9	1,147.9	336.1	278.1	57.95	5.800	
8,700.0	7,158.4	8,547.2	7,076.2	41.6	37.7	76.01	-1,387.9	1,145.7	335.8	274.9	60.98	5.508	
8,800.0	7,158.4	8,647.2	7,075.7	42.8	39.1	75.92	-1,487.9	1,143.6	335.6	271.5	64.07	5.238	
8,900.0	7,158.4	8,747.2	7,075.2	44.0	40.5	75.82	-1,587.9	1,141.5	335.4	268.1	67.22	4.989	
9,000.0	7,158.4	8,847.2	7,074.8	45.4	41.9	75.73	-1,687.8	1,139.4	335.1	264.7	70.43	4.758	
9,100.0	7,158.4	8,947.2	7,074.3	46.7	43.4	75.64	-1,787.8	1,137.2	334.9	261.2	73.68	4.545	

CC - Min centre to center distance or convergent point, SF - min separation factor, ES - min ellipse separation

Company:	Bayswater Exploration & Production, LLC	Local Co-ordinate Reference:	Well Mojock P-28HC
Project:	SEC.28-T7N-R64W	TVD Reference:	WELL @ 4923.5ft (RKB - 22.5')
Reference Site:	Mojack 28-C Pad (East) Sec.28-T7N-R64W	MD Reference:	WELL @ 4923.5ft (RKB - 22.5')
Site Error:	0.0ft	North Reference:	True
Reference Well:	Mojack P-28HC	Survey Calculation Method:	Minimum Curvature
Well Error:	0.0ft	Output errors are at	2.00 sigma
Reference Wellbore	Wellbore #1	Database:	Landmark
Reference Design:	Plan #2 (10-15-14)	Offset TVD Reference:	Offset Datum

Offset Design Mojack 28-C Pad (East) Sec.28-T7N-R64W - Mojack O-28HN - Wellbore #1 - Plan #2 (10-15-14)												Offset Site Error:	0.0 ft
Survey Program: 0-MWDD												Offset Well Error:	0.0 ft
Reference		Offset		Semi Major Axis			Distance						
Measured Depth (ft)	Vertical Depth (ft)	Measured Depth (ft)	Vertical Depth (ft)	Reference (ft)	Offset (ft)	Highside Toolface (°)	Offset Wellbore Centre +N/-S (ft)	+E/-W (ft)	Between Centres (ft)	Between Ellipses (ft)	Minimum Separation (ft)	Separation Factor	Warning
9,200.0	7,158.4	9,047.2	7,073.8	48.1	45.0	75.54	-1,887.8	1,135.1	334.6	257.7	76.96	4.348	
9,300.0	7,158.4	9,147.2	7,073.3	49.6	46.5	75.45	-1,987.8	1,133.0	334.4	254.1	80.28	4.165	
9,400.0	7,158.4	9,247.2	7,072.9	51.0	48.1	75.35	-2,087.7	1,130.9	334.2	250.5	83.63	3.996	
9,500.0	7,158.4	9,347.2	7,072.4	52.6	49.7	75.26	-2,187.7	1,128.7	333.9	246.9	87.00	3.838	
9,600.0	7,158.3	9,447.2	7,071.9	54.1	51.4	75.16	-2,287.7	1,126.6	333.7	243.3	90.40	3.691	
9,700.0	7,158.3	9,547.2	7,071.4	55.6	53.0	75.07	-2,387.7	1,124.5	333.5	239.7	93.81	3.555	
9,800.0	7,158.3	9,647.2	7,071.0	57.2	54.7	74.98	-2,487.6	1,122.4	333.2	236.0	97.24	3.427	
9,900.0	7,158.3	9,747.2	7,070.5	58.8	56.4	74.88	-2,587.6	1,120.2	333.0	232.3	100.68	3.307	
10,000.0	7,158.3	9,847.2	7,070.0	60.4	58.1	74.79	-2,687.6	1,118.1	332.8	228.6	104.14	3.195	
10,100.0	7,158.3	9,947.2	7,069.5	62.1	59.8	74.69	-2,787.6	1,116.0	332.5	224.9	107.61	3.090	
10,200.0	7,158.3	10,047.2	7,069.1	63.7	61.5	74.60	-2,887.5	1,113.9	332.3	221.2	111.09	2.991	
10,300.0	7,158.3	10,147.2	7,068.6	65.4	63.2	74.50	-2,987.5	1,111.7	332.1	217.5	114.57	2.898	
10,400.0	7,158.3	10,247.2	7,068.1	67.1	65.0	74.41	-3,087.5	1,109.6	331.8	213.8	118.07	2.811	
10,500.0	7,158.3	10,347.1	7,067.6	68.8	66.7	74.31	-3,187.5	1,107.5	331.6	210.0	121.57	2.728	
10,600.0	7,158.3	10,447.1	7,067.1	70.5	68.5	74.21	-3,287.4	1,105.4	331.4	206.3	125.08	2.650	
10,700.0	7,158.3	10,547.1	7,066.7	72.2	70.3	74.12	-3,387.4	1,103.2	331.2	202.6	128.59	2.575	
10,800.0	7,158.3	10,647.1	7,066.2	73.9	72.1	74.02	-3,487.4	1,101.1	330.9	198.8	132.10	2.505	
10,900.0	7,158.3	10,747.1	7,065.7	75.7	73.8	73.93	-3,587.4	1,099.0	330.7	195.1	135.62	2.439	
11,000.0	7,158.3	10,847.1	7,065.2	77.4	75.6	73.83	-3,687.3	1,096.9	330.5	191.3	139.14	2.375	
11,100.0	7,158.3	10,947.1	7,064.8	79.2	77.4	73.73	-3,787.3	1,094.7	330.3	187.6	142.67	2.315	
11,200.0	7,158.3	11,047.1	7,064.3	81.0	79.2	73.64	-3,887.3	1,092.6	330.0	183.9	146.19	2.258	
11,300.0	7,158.3	11,147.1	7,063.8	82.7	81.1	73.54	-3,987.3	1,090.5	329.8	180.1	149.72	2.203	
11,400.0	7,158.3	11,247.1	7,063.3	84.5	82.9	73.44	-4,087.2	1,088.4	329.6	176.4	153.25	2.151	
11,500.0	7,158.3	11,347.1	7,062.9	86.3	84.7	73.35	-4,187.2	1,086.2	329.4	172.6	156.78	2.101	
11,600.0	7,158.3	11,447.1	7,062.4	88.1	86.5	73.25	-4,287.2	1,084.1	329.2	168.9	160.31	2.053	
11,700.0	7,158.3	11,547.1	7,061.9	89.9	88.3	73.15	-4,387.2	1,082.0	329.0	165.1	163.84	2.008	
11,800.0	7,158.2	11,647.1	7,061.4	91.7	90.2	73.06	-4,487.1	1,079.9	328.7	161.4	167.37	1.964	
11,900.0	7,158.2	11,747.1	7,061.0	93.5	92.0	72.96	-4,587.1	1,077.7	328.5	157.6	170.90	1.922	
12,000.0	7,158.2	11,847.1	7,060.5	95.3	93.8	72.86	-4,687.1	1,075.6	328.3	153.9	174.43	1.882	
12,100.0	7,158.2	11,947.1	7,060.0	97.1	95.7	72.76	-4,787.1	1,073.5	328.1	150.1	177.96	1.844	
12,200.0	7,158.2	12,047.1	7,059.5	98.9	97.5	72.67	-4,887.0	1,071.4	327.9	146.4	181.49	1.807	
12,300.0	7,158.2	12,147.1	7,059.1	100.7	99.4	72.57	-4,987.0	1,069.3	327.7	142.7	185.02	1.771	
12,400.0	7,158.2	12,247.1	7,058.6	102.5	101.2	72.47	-5,087.0	1,067.1	327.5	138.9	188.54	1.737	
12,500.0	7,158.2	12,347.1	7,058.1	104.4	103.1	72.37	-5,186.9	1,065.0	327.3	135.2	192.06	1.704	
12,600.0	7,158.2	12,447.1	7,057.6	106.2	104.9	72.27	-5,286.9	1,062.9	327.1	131.5	195.59	1.672	
12,700.0	7,158.2	12,547.1	7,057.2	108.0	106.8	72.17	-5,386.9	1,060.8	326.8	127.7	199.11	1.642	
12,800.0	7,158.2	12,647.1	7,056.7	109.9	108.7	72.08	-5,486.9	1,058.6	326.6	124.0	202.62	1.612	
12,900.0	7,158.2	12,747.1	7,056.2	111.7	110.5	71.98	-5,586.8	1,056.5	326.4	120.3	206.14	1.584	
13,000.0	7,158.2	12,847.1	7,055.7	113.5	112.4	71.88	-5,686.8	1,054.4	326.2	116.6	209.65	1.556	
13,100.0	7,158.2	12,947.1	7,055.2	115.4	114.2	71.78	-5,786.8	1,052.3	326.0	112.9	213.16	1.529	
13,200.0	7,158.2	13,047.1	7,054.8	117.2	116.1	71.68	-5,886.8	1,050.1	325.8	109.2	216.67	1.504	
13,300.0	7,158.2	13,147.1	7,054.3	119.1	118.0	71.58	-5,986.7	1,048.0	325.6	105.4	220.18	1.479 Level 3	
13,400.0	7,158.2	13,247.1	7,053.8	120.9	119.8	71.48	-6,086.7	1,045.9	325.4	101.7	223.68	1.455 Level 3	
13,500.0	7,158.2	13,347.1	7,053.3	122.8	121.7	71.38	-6,186.7	1,043.8	325.2	98.0	227.18	1.432 Level 3	
13,600.0	7,158.2	13,447.1	7,052.9	124.6	123.6	71.28	-6,286.7	1,041.6	325.0	94.4	230.68	1.409 Level 3	
13,700.0	7,158.2	13,547.1	7,052.4	126.5	125.5	71.18	-6,386.6	1,039.5	324.8	90.7	234.17	1.387 Level 3	
13,800.0	7,158.2	13,647.1	7,051.9	128.3	127.3	71.08	-6,486.6	1,037.4	324.6	87.0	237.66	1.366 Level 3	
13,900.0	7,158.1	13,747.1	7,051.4	130.2	129.2	70.98	-6,586.6	1,035.3	324.4	83.3	241.15	1.345 Level 3	
14,000.0	7,158.1	13,847.1	7,051.0	132.1	131.1	70.88	-6,686.6	1,033.1	324.2	79.6	244.64	1.325 Level 3	
14,100.0	7,158.1	13,947.1	7,050.5	133.9	133.0	70.78	-6,786.5	1,031.0	324.1	75.9	248.12	1.306 Level 3	
14,200.0	7,158.1	14,047.1	7,050.0	135.8	134.8	70.68	-6,886.5	1,028.9	323.9	72.3	251.59	1.287 Level 3	
14,300.0	7,158.1	14,147.1	7,049.5	137.6	136.7	70.58	-6,986.5	1,026.8	323.7	68.6	255.07	1.269 Level 3	

CC - Min centre to center distance or convergent point, SF - min separation factor, ES - min ellipse separation

Company:	Bayswater Exploration & Production, LLC	Local Co-ordinate Reference:	Well Mojack P-28HC
Project:	SEC.28-T7N-R64W	TVD Reference:	WELL @ 4923.5ft (RKB - 22.5')
Reference Site:	Mojack 28-C Pad (East) Sec.28-T7N-R64W	MD Reference:	WELL @ 4923.5ft (RKB - 22.5')
Site Error:	0.0ft	North Reference:	True
Reference Well:	Mojack P-28HC	Survey Calculation Method:	Minimum Curvature
Well Error:	0.0ft	Output errors are at	2.00 sigma
Reference Wellbore	Wellbore #1	Database:	Landmark
Reference Design:	Plan #2 (10-15-14)	Offset TVD Reference:	Offset Datum

Offset Design Mojack 28-C Pad (East) Sec.28-T7N-R64W - Mojack O-28HN - Wellbore #1 - Plan #2 (10-15-14)												Offset Site Error:	0.0 ft
Survey Program: 0-MWD												Offset Well Error:	0.0 ft
Reference		Offset		Semi Major Axis			Distance						
Measured Depth (ft)	Vertical Depth (ft)	Measured Depth (ft)	Vertical Depth (ft)	Reference (ft)	Offset (ft)	Highside Toolface (°)	Offset Wellbore Centre +N/-S (ft)	+E/-W (ft)	Between Centres (ft)	Between Ellipses (ft)	Minimum Separation (ft)	Separation Factor	Warning
14,400.0	7,158.1	14,247.1	7,049.1	139.5	138.6	70.48	-7,086.5	1,024.6	323.5	64.9	258.54	1.251 Level 3	
14,500.0	7,158.1	14,347.1	7,048.6	141.4	140.5	70.38	-7,186.4	1,022.5	323.3	61.3	262.01	1.234 Level 2	
14,600.0	7,158.1	14,447.1	7,048.1	143.3	142.4	70.28	-7,286.4	1,020.4	323.1	57.6	265.47	1.217 Level 2	
14,700.0	7,158.1	14,547.1	7,047.6	145.1	144.3	70.18	-7,386.4	1,018.3	322.9	54.0	268.93	1.201 Level 2	
14,800.0	7,158.1	14,647.1	7,047.2	147.0	146.1	70.08	-7,486.4	1,016.1	322.7	50.4	272.38	1.185 Level 2	
14,900.0	7,158.1	14,747.1	7,046.7	148.9	148.0	69.98	-7,586.3	1,014.0	322.5	46.7	275.83	1.169 Level 2	
15,000.0	7,158.1	14,847.1	7,046.2	150.7	149.9	69.88	-7,686.3	1,011.9	322.4	43.1	279.28	1.154 Level 2	
15,100.0	7,158.1	14,947.1	7,045.7	152.6	151.8	69.78	-7,786.3	1,009.8	322.2	39.5	282.72	1.140 Level 2	
15,200.0	7,158.1	15,047.1	7,045.3	154.5	153.7	69.68	-7,886.3	1,007.6	322.0	35.8	286.16	1.125 Level 2	
15,271.3	7,158.1	15,117.7	7,044.9	155.8	155.0	69.60	-7,956.9	1,006.1	321.9	33.3	288.58	1.115 Level 2	
15,300.0	7,158.1	15,146.1	7,044.5	156.4	155.6	69.53	-7,985.3	1,005.5	321.9	32.4	289.50	1.112 Level 2	
15,400.0	7,158.1	15,246.1	7,043.2	158.2	157.4	69.28	-8,085.2	1,003.4	322.0	29.4	292.68	1.100 Level 2	
15,500.0	7,158.1	15,346.1	7,041.8	160.1	159.3	69.04	-8,185.2	1,001.3	322.2	26.3	295.85	1.089 Level 2	
15,600.0	7,158.1	15,446.1	7,040.5	162.0	161.2	68.79	-8,285.1	999.2	322.3	23.3	299.00	1.078 Level 2	
15,700.0	7,158.1	15,546.1	7,039.1	163.9	163.1	68.55	-8,385.1	997.0	322.4	20.3	302.14	1.067 Level 2	
15,800.0	7,158.1	15,646.1	7,037.8	165.8	165.0	68.30	-8,485.1	994.9	322.6	17.3	305.27	1.057 Level 2	
15,900.0	7,158.1	15,746.0	7,036.5	167.6	166.9	68.06	-8,585.0	992.8	322.7	14.4	308.38	1.047 Level 2	
16,000.0	7,158.1	15,846.0	7,035.1	169.5	168.8	67.82	-8,685.0	990.7	322.9	11.4	311.48	1.037 Level 2	
16,100.0	7,158.0	15,946.0	7,033.8	171.4	170.7	67.57	-8,784.9	988.5	323.1	8.5	314.57	1.027 Level 2	
16,200.0	7,158.0	16,046.0	7,032.5	173.3	172.6	67.33	-8,884.9	986.4	323.2	5.6	317.64	1.018 Level 2	
16,300.0	7,158.0	16,146.0	7,031.1	175.2	174.5	67.09	-8,984.9	984.3	323.4	2.7	320.70	1.008 Level 2	
16,400.0	7,158.0	16,246.0	7,029.8	177.1	176.4	66.84	-9,084.8	982.2	323.6	-0.2	323.75	1.000 Level 1	
16,500.0	7,158.0	16,346.0	7,028.4	178.9	178.3	66.60	-9,184.8	980.1	323.8	-3.0	326.78	0.991 Level 1	
16,600.0	7,158.0	16,446.0	7,027.1	180.8	180.2	66.36	-9,284.7	977.9	324.0	-5.8	329.79	0.982 Level 1	
16,700.0	7,158.0	16,546.0	7,025.8	182.7	182.1	66.12	-9,384.7	975.8	324.2	-8.6	332.80	0.974 Level 1	
16,800.0	7,158.0	16,646.0	7,024.4	184.6	184.0	65.87	-9,484.7	973.7	324.4	-11.4	335.78	0.966 Level 1	
16,900.0	7,158.0	16,745.9	7,023.1	186.5	185.8	65.63	-9,584.6	971.6	324.6	-14.2	338.76	0.958 Level 1	
17,000.0	7,158.0	16,845.9	7,021.8	188.4	187.7	65.39	-9,684.6	969.4	324.8	-16.9	341.71	0.951 Level 1	
17,100.0	7,158.0	16,945.9	7,020.4	190.3	189.6	65.15	-9,784.5	967.3	325.0	-19.6	344.66	0.943 Level 1	
17,121.4	7,158.0	16,967.3	7,020.1	190.7	190.0	65.10	-9,805.9	966.9	325.1	-20.2	345.29	0.941 Level 1, ES, SF	

Company:	Bayswater Exploration & Production, LLC	Local Co-ordinate Reference:	Well Mojack P-28HC
Project:	SEC.28-T7N-R64W	TVD Reference:	WELL @ 4923.5ft (RKB - 22.5')
Reference Site:	Mojack 28-C Pad (East) Sec.28-T7N-R64W	MD Reference:	WELL @ 4923.5ft (RKB - 22.5')
Site Error:	0.0ft	North Reference:	True
Reference Well:	Mojack P-28HC	Survey Calculation Method:	Minimum Curvature
Well Error:	0.0ft	Output errors are at	2.00 sigma
Reference Wellbore	Wellbore #1	Database:	Landmark
Reference Design:	Plan #2 (10-15-14)	Offset TVD Reference:	Offset Datum

Offset Design Mojack 28-C Pad (West) Sec.28-T7N-R64W - Mojack A-28HN - Wellbore #1 - Plan #1 (4-08-14)												Offset Site Error:	0.0 ft
Survey Program: 0-MWD												Offset Well Error:	0.0 ft
Reference	Offset	Semi Major Axis		Distance									Warning
Measured Depth (ft)	Vertical Depth (ft)	Measured Depth (ft)	Vertical Depth (ft)	Reference (ft)	Offset (ft)	Highside Toolface (°)	Offset Wellbore Centre +N/-S (ft)	+E/-W (ft)	Between Centres (ft)	Between Ellipses (ft)	Minimum Separation (ft)	Separation Factor	
0.0	0.0	0.0	0.0	0.0	0.0	-91.37	-17.5	-728.4	728.8				
100.0	100.0	83.0	83.0	0.1	0.1	-91.37	-17.5	-728.4	728.6	728.4	0.21	3,542.071	
200.0	200.0	183.0	183.0	0.3	0.3	-91.37	-17.5	-728.4	728.6	727.9	0.64	1,145.417	CC, ES
300.0	300.0	266.1	266.1	0.6	0.5	-172.49	-17.4	-729.1	731.3	730.2	1.04	700.661	
400.0	399.8	345.4	345.4	0.8	0.7	-172.49	-17.3	-732.1	740.1	738.7	1.46	507.003	
500.0	499.5	423.9	423.6	1.0	0.8	-172.49	-17.1	-737.1	755.2	753.3	1.89	399.339	
600.0	598.7	500.0	499.5	1.3	1.0	-172.49	-16.8	-744.1	776.3	773.9	2.33	333.712	SF

Company:	Bayswater Exploration & Production, LLC	Local Co-ordinate Reference:	Well Mojack P-28HC
Project:	SEC.28-T7N-R64W	TVD Reference:	WELL @ 4923.5ft (RKB - 22.5')
Reference Site:	Mojack 28-C Pad (East) Sec.28-T7N-R64W	MD Reference:	WELL @ 4923.5ft (RKB - 22.5')
Site Error:	0.0ft	North Reference:	True
Reference Well:	Mojack P-28HC	Survey Calculation Method:	Minimum Curvature
Well Error:	0.0ft	Output errors are at	2.00 sigma
Reference Wellbore	Wellbore #1	Database:	Landmark
Reference Design:	Plan #2 (10-15-14)	Offset TVD Reference:	Offset Datum

Offset Design Mojack 28-C Pad (West) Sec.28-T7N-R64W - Mojack B-28HN - Wellbore #1 - Plan #1 (4-08-14)												Offset Site Error:	0.0 ft
Survey Program: 0-MWD												Offset Well Error:	0.0 ft
Reference	Offset	Semi Major Axis		Distance									
Measured Depth (ft)	Vertical Depth (ft)	Measured Depth (ft)	Vertical Depth (ft)	Reference (ft)	Offset (ft)	Highside Toolface (°)	Offset Wellbore Centre +N/-S (ft)	+E/-W (ft)	Between Centres (ft)	Between Ellipses (ft)	Minimum Separation (ft)	Separation Factor	Warning
0.0	0.0	0.0	0.0	0.0	0.0	-91.38	-17.1	-710.3	710.7				
100.0	100.0	83.0	83.0	0.1	0.1	-91.38	-17.1	-710.3	710.5	710.3	0.21	3,454.238	
200.0	200.0	183.0	183.0	0.3	0.3	-91.38	-17.1	-710.3	710.5	709.9	0.64	1,117.014 CC, ES	
300.0	300.0	283.0	283.0	0.6	0.5	-172.50	-17.1	-710.3	712.2	711.2	1.08	657.172	
400.0	399.8	382.8	382.8	0.8	0.7	-172.54	-17.1	-710.3	717.4	715.9	1.53	467.616	
500.0	499.5	465.8	465.8	1.0	0.9	-172.59	-17.1	-711.1	727.0	725.1	1.95	372.699	
600.0	598.7	544.5	544.4	1.3	1.1	-172.63	-16.9	-713.9	742.7	740.4	2.37	313.202	
700.0	697.5	621.8	621.6	1.6	1.3	-172.66	-16.6	-718.9	764.5	761.7	2.80	272.980	
800.0	795.6	700.0	699.5	2.0	1.5	-172.68	-16.3	-726.0	792.2	789.0	3.24	244.452 SF	

Company:	Bayswater Exploration & Production, LLC	Local Co-ordinate Reference:	Well Mojack P-28HC
Project:	SEC.28-T7N-R64W	TVD Reference:	WELL @ 4923.5ft (RKB - 22.5')
Reference Site:	Mojack 28-C Pad (East) Sec.28-T7N-R64W	MD Reference:	WELL @ 4923.5ft (RKB - 22.5')
Site Error:	0.0ft	North Reference:	True
Reference Well:	Mojack P-28HC	Survey Calculation Method:	Minimum Curvature
Well Error:	0.0ft	Output errors are at	2.00 sigma
Reference Wellbore	Wellbore #1	Database:	Landmark
Reference Design:	Plan #2 (10-15-14)	Offset TVD Reference:	Offset Datum

Offset Design Mojack 28-C Pad (West) Sec.28-T7N-R64W - Mojack C-28HN - Wellbore #1 - Plan #1 (4-08-14)												Offset Site Error:	0.0 ft
Survey Program: 0-MWD												Offset Well Error:	0.0 ft
Reference	Offset	Semi Major Axis		Distance									
Measured Depth (ft)	Vertical Depth (ft)	Measured Depth (ft)	Vertical Depth (ft)	Reference (ft)	Offset (ft)	Highside Toolface (°)	Offset Wellbore Centre +N/-S (ft)	+E/-W (ft)	Between Centres (ft)	Between Ellipses (ft)	Minimum Separation (ft)	Separation Factor	Warning
0.0	0.0	0.0	0.0	0.0	0.0	-91.39	-16.7	-692.5	692.9				
100.0	100.0	83.0	83.0	0.1	0.1	-91.39	-16.7	-692.5	692.7	692.5	0.21	3,367.754	
200.0	200.0	183.0	183.0	0.3	0.3	-91.39	-16.7	-692.5	692.7	692.1	0.64	1,089.048	CC, ES
300.0	300.0	283.0	283.0	0.6	0.5	-172.51	-16.7	-692.5	694.5	693.4	1.08	640.758	
400.0	399.8	382.8	382.8	0.8	0.7	-172.55	-16.7	-692.5	699.6	698.1	1.53	456.021	
500.0	499.5	482.5	482.5	1.0	1.0	-172.62	-16.7	-692.5	708.3	706.3	1.99	355.994	
600.0	598.7	581.7	581.7	1.3	1.2	-172.71	-16.7	-692.5	720.4	717.9	2.45	294.282	
700.0	697.5	664.1	664.1	1.6	1.4	-172.80	-16.7	-693.2	736.8	733.9	2.87	256.626	
800.0	795.6	741.4	741.4	2.0	1.5	-172.86	-16.5	-696.0	759.2	755.9	3.30	230.363	
860.9	855.1	787.7	787.5	2.3	1.6	-172.90	-16.3	-698.7	775.8	772.2	3.56	218.078	
900.0	893.1	817.0	816.8	2.5	1.7	-172.94	-16.2	-700.7	787.3	783.6	3.72	211.498	SF

Company:	Bayswater Exploration & Production, LLC	Local Co-ordinate Reference:	Well Mojack P-28HC
Project:	SEC.28-T7N-R64W	TVD Reference:	WELL @ 4923.5ft (RKB - 22.5')
Reference Site:	Mojack 28-C Pad (East) Sec.28-T7N-R64W	MD Reference:	WELL @ 4923.5ft (RKB - 22.5')
Site Error:	0.0ft	North Reference:	True
Reference Well:	Mojack P-28HC	Survey Calculation Method:	Minimum Curvature
Well Error:	0.0ft	Output errors are at	2.00 sigma
Reference Wellbore	Wellbore #1	Database:	Landmark
Reference Design:	Plan #2 (10-15-14)	Offset TVD Reference:	Offset Datum

Offset Design Mojack 28-C Pad (West) Sec.28-T7N-R64W - Mojack D-28HC - Wellbore #1 - Plan #1 (4-08-14)												Offset Site Error:	0.0 ft
Survey Program: 0-MWD												Offset Well Error:	0.0 ft
Reference	Offset	Semi Major Axis		Distance									
Measured Depth (ft)	Vertical Depth (ft)	Measured Depth (ft)	Vertical Depth (ft)	Reference (ft)	Offset (ft)	Highside Toolface (°)	Offset Wellbore Centre +N/-S (ft)	+E/-W (ft)	Between Centres (ft)	Between Ellipses (ft)	Minimum Separation (ft)	Separation Factor	Warning
0.0	0.0	0.0	0.0	0.0	0.0	-91.39	-16.4	-674.5	674.9				
100.0	100.0	83.0	83.0	0.1	0.1	-91.39	-16.4	-674.5	674.7	674.5	0.21	3,279.920	
200.0	200.0	183.0	183.0	0.3	0.3	-91.39	-16.4	-674.5	674.7	674.0	0.64	1,060.644 CC, ES	
300.0	300.0	283.0	283.0	0.6	0.5	-172.52	-16.4	-674.5	676.4	675.3	1.08	624.088	
400.0	399.8	382.8	382.8	0.8	0.7	-172.56	-16.4	-674.5	681.6	680.0	1.53	444.245	
500.0	499.5	482.5	482.5	1.0	1.0	-172.63	-16.4	-674.5	690.2	688.2	1.99	346.913	
600.0	598.7	581.7	581.7	1.3	1.2	-172.73	-16.4	-674.5	702.3	699.9	2.45	286.901	
700.0	697.5	680.5	680.5	1.6	1.4	-172.85	-16.4	-674.5	717.8	714.9	2.91	246.776	
800.0	795.6	778.6	778.6	2.0	1.6	-172.98	-16.4	-674.5	736.8	733.4	3.37	218.462	
860.9	855.1	830.2	830.2	2.3	1.8	-173.06	-16.4	-674.6	750.2	746.5	3.64	206.242	
900.0	893.1	860.3	860.3	2.5	1.8	-173.12	-16.3	-675.1	759.6	755.8	3.80	199.826	
1,000.0	990.5	936.4	936.4	2.9	2.0	-173.25	-16.1	-677.7	785.7	781.4	4.23	185.900 SF	

Company:	Bayswater Exploration & Production, LLC	Local Co-ordinate Reference:	Well Mojack P-28HC
Project:	SEC.28-T7N-R64W	TVD Reference:	WELL @ 4923.5ft (RKB - 22.5')
Reference Site:	Mojack 28-C Pad (East) Sec.28-T7N-R64W	MD Reference:	WELL @ 4923.5ft (RKB - 22.5')
Site Error:	0.0ft	North Reference:	True
Reference Well:	Mojack P-28HC	Survey Calculation Method:	Minimum Curvature
Well Error:	0.0ft	Output errors are at	2.00 sigma
Reference Wellbore	Wellbore #1	Database:	Landmark
Reference Design:	Plan #2 (10-15-14)	Offset TVD Reference:	Offset Datum

Offset Design Mojack 28-C Pad (West) Sec.28-T7N-R64W - Mojack E-28HN - Wellbore #1 - Plan #1 (4-08-14)												Offset Site Error:	0.0 ft
Survey Program: 0-MWD												Offset Well Error:	0.0 ft
Reference	Offset	Semi Major Axis		Distance									
Measured Depth (ft)	Vertical Depth (ft)	Measured Depth (ft)	Vertical Depth (ft)	Reference (ft)	Offset (ft)	Highside Toolface (°)	Offset Wellbore Centre +N/-S (ft)	+E/-W (ft)	Between Centres (ft)	Between Ellipses (ft)	Minimum Separation (ft)	Separation Factor	Warning
0.0	0.0	0.0	0.0	0.0	0.0	-91.40	-16.0	-656.4	656.8				
100.0	100.0	84.0	84.0	0.1	0.1	-91.40	-16.0	-656.4	656.6	656.4	0.21	3,174.771	
200.0	200.0	184.0	184.0	0.3	0.3	-91.40	-16.0	-656.4	656.6	656.0	0.64	1,028.606 CC, ES	
300.0	300.0	284.0	284.0	0.6	0.5	-172.52	-16.0	-656.4	658.3	657.2	1.09	606.176	
400.0	399.8	383.8	383.8	0.8	0.8	-172.57	-16.0	-656.4	663.5	662.0	1.54	431.852	
500.0	499.5	483.5	483.5	1.0	1.0	-172.64	-16.0	-656.4	672.2	670.2	1.99	337.464	
600.0	598.7	582.7	582.7	1.3	1.2	-172.74	-16.0	-656.4	684.2	681.8	2.45	279.276	
700.0	697.5	681.5	681.5	1.6	1.4	-172.87	-16.0	-656.4	699.8	696.9	2.91	240.389	
800.0	795.6	779.6	779.6	2.0	1.6	-173.01	-16.0	-656.4	718.7	715.3	3.37	212.973	
860.9	855.1	839.1	839.1	2.3	1.8	-173.10	-16.0	-656.4	731.9	728.3	3.66	200.067	
900.0	893.1	877.1	877.1	2.5	1.9	-173.18	-16.0	-656.4	740.8	737.0	3.84	192.912	
1,000.0	990.5	974.5	974.5	2.9	2.1	-173.39	-16.0	-656.4	763.5	759.2	4.31	177.179	
1,100.0	1,087.8	1,056.5	1,056.5	3.4	2.3	-173.54	-16.0	-657.0	786.9	782.2	4.75	165.786 SF	

Company:	Bayswater Exploration & Production, LLC	Local Co-ordinate Reference:	Well Mojack P-28HC
Project:	SEC.28-T7N-R64W	TVD Reference:	WELL @ 4923.5ft (RKB - 22.5')
Reference Site:	Mojack 28-C Pad (East) Sec.28-T7N-R64W	MD Reference:	WELL @ 4923.5ft (RKB - 22.5')
Site Error:	0.0ft	North Reference:	True
Reference Well:	Mojack P-28HC	Survey Calculation Method:	Minimum Curvature
Well Error:	0.0ft	Output errors are at	2.00 sigma
Reference Wellbore	Wellbore #1	Database:	Landmark
Reference Design:	Plan #2 (10-15-14)	Offset TVD Reference:	Offset Datum

Offset Design Mojack 28-C Pad (West) Sec.28-T7N-R64W - Mojack F-28HN - Wellbore #1 - Plan #1 (4-08-14)												Offset Site Error:	0.0 ft
Survey Program: 0-MWD												Offset Well Error:	0.0 ft
Reference	Offset	Semi Major Axis			Distance								Warning
Measured Depth (ft)	Vertical Depth (ft)	Measured Depth (ft)	Vertical Depth (ft)	Reference (ft)	Offset (ft)	Highside Toolface (°)	Offset Wellbore Centre +N/-S (ft)	+E/-W (ft)	Between Centres (ft)	Between Ellipses (ft)	Minimum Separation (ft)	Separation Factor	
0.0	0.0	0.0	0.0	0.0	0.0	-91.37	-15.3	-638.6	639.0				
100.0	100.0	85.0	85.0	0.1	0.1	-91.37	-15.3	-638.6	638.8	638.6	0.21	3,072.050	
200.0	200.0	185.0	185.0	0.3	0.3	-91.37	-15.3	-638.6	638.8	638.2	0.64	997.213 CC, ES	
300.0	300.0	285.0	285.0	0.6	0.5	-172.50	-15.3	-638.6	640.5	639.4	1.09	588.584	
400.0	399.8	384.8	384.8	0.8	0.8	-172.54	-15.3	-638.6	645.7	644.2	1.54	419.669	
500.0	499.5	484.5	484.5	1.0	1.0	-172.62	-15.3	-638.6	654.4	652.4	1.99	328.171	
600.0	598.7	583.7	583.7	1.3	1.2	-172.73	-15.3	-638.6	666.4	664.0	2.45	271.772	
700.0	697.5	682.5	682.5	1.6	1.4	-172.85	-15.3	-638.6	682.0	679.1	2.91	234.103	
800.0	795.6	780.6	780.6	2.0	1.6	-173.00	-15.3	-638.6	700.9	697.5	3.38	207.568	
860.9	855.1	840.1	840.1	2.3	1.8	-173.10	-15.3	-638.6	714.1	710.5	3.66	195.089	
900.0	893.1	878.1	878.1	2.5	1.9	-173.18	-15.3	-638.6	723.0	719.1	3.84	188.173	
1,000.0	990.5	975.5	975.5	2.9	2.1	-173.39	-15.3	-638.6	745.7	741.4	4.31	172.963	
1,100.0	1,087.8	1,072.8	1,072.8	3.4	2.3	-173.59	-15.3	-638.6	768.4	763.6	4.79	160.585	
1,200.0	1,185.2	1,170.2	1,170.2	3.9	2.5	-173.77	-15.3	-638.6	791.2	785.9	5.26	150.343 SF	

Company:	Bayswater Exploration & Production, LLC	Local Co-ordinate Reference:	Well Mojack P-28HC
Project:	SEC.28-T7N-R64W	TVD Reference:	WELL @ 4923.5ft (RKB - 22.5')
Reference Site:	Mojack 28-C Pad (East) Sec.28-T7N-R64W	MD Reference:	WELL @ 4923.5ft (RKB - 22.5')
Site Error:	0.0ft	North Reference:	True
Reference Well:	Mojack P-28HC	Survey Calculation Method:	Minimum Curvature
Well Error:	0.0ft	Output errors are at	2.00 sigma
Reference Wellbore	Wellbore #1	Database:	Landmark
Reference Design:	Plan #2 (10-15-14)	Offset TVD Reference:	Offset Datum

Offset Design Mojack 28-C Pad (West) Sec.28-T7N-R64W - Mojack G-28HN - Wellbore #1 - Plan #1 (4-08-14)												Offset Site Error:	0.0 ft
Survey Program: 0-MWD												Offset Well Error:	0.0 ft
Reference	Offset	Semi Major Axis		Distance									
Measured Depth (ft)	Vertical Depth (ft)	Measured Depth (ft)	Vertical Depth (ft)	Reference (ft)	Offset (ft)	Highside Toolface (°)	Offset Wellbore Centre +N/-S (ft)	+E/-W (ft)	Between Centres (ft)	Between Ellipses (ft)	Minimum Separation (ft)	Separation Factor	Warning
0.0	0.0	0.0	0.0	0.0	0.0	-91.38	-14.9	-620.3	620.6				
100.0	100.0	85.0	85.0	0.1	0.1	-91.38	-14.9	-620.3	620.5	620.2	0.21	2,983.828	
200.0	200.0	185.0	185.0	0.3	0.3	-91.38	-14.9	-620.3	620.5	619.8	0.64	968.575 CC, ES	
300.0	300.0	285.0	285.0	0.6	0.5	-172.51	-14.9	-620.3	622.2	621.1	1.09	571.727	
400.0	399.8	384.8	384.8	0.8	0.8	-172.55	-14.9	-620.3	627.4	625.8	1.54	407.746	
500.0	499.5	484.5	484.5	1.0	1.0	-172.63	-14.9	-620.3	636.0	634.0	1.99	318.970	
600.0	598.7	583.7	583.7	1.3	1.2	-172.74	-14.9	-620.3	648.1	645.7	2.45	264.292	
700.0	697.5	682.5	682.5	1.6	1.4	-172.87	-14.9	-620.3	663.6	660.7	2.91	227.806	
800.0	795.6	780.6	780.6	2.0	1.6	-173.02	-14.9	-620.3	682.6	679.2	3.38	202.137	
860.9	855.1	840.1	840.1	2.3	1.8	-173.13	-14.9	-620.3	695.8	692.1	3.66	190.080	
900.0	893.1	878.1	878.1	2.5	1.9	-173.21	-14.9	-620.3	704.6	700.8	3.84	183.402	
1,000.0	990.5	975.5	975.5	2.9	2.1	-173.42	-14.9	-620.3	727.4	723.1	4.31	168.713	
1,100.0	1,087.8	1,072.8	1,072.8	3.4	2.3	-173.62	-14.9	-620.3	750.1	745.3	4.79	156.756	
1,200.0	1,185.2	1,170.2	1,170.2	3.9	2.5	-173.81	-14.9	-620.3	772.8	767.6	5.26	146.863	
1,300.0	1,282.5	1,267.5	1,267.5	4.4	2.7	-173.99	-14.9	-620.3	795.6	789.8	5.74	138.558 SF	

Company:	Bayswater Exploration & Production, LLC	Local Co-ordinate Reference:	Well Mojack P-28HC
Project:	SEC.28-T7N-R64W	TVD Reference:	WELL @ 4923.5ft (RKB - 22.5')
Reference Site:	Mojack 28-C Pad (East) Sec.28-T7N-R64W	MD Reference:	WELL @ 4923.5ft (RKB - 22.5')
Site Error:	0.0ft	North Reference:	True
Reference Well:	Mojack P-28HC	Survey Calculation Method:	Minimum Curvature
Well Error:	0.0ft	Output errors are at	2.00 sigma
Reference Wellbore	Wellbore #1	Database:	Landmark
Reference Design:	Plan #2 (10-15-14)	Offset TVD Reference:	Offset Datum

Offset Design Mojack 28-C Pad (West) Sec.28-T7N-R64W - Mojack H-28HN - Wellbore #1 - Plan #1 (4-08-14)												Offset Site Error:	0.0 ft
Survey Program: 0-MWD												Offset Well Error:	0.0 ft
Reference	Offset	Semi Major Axis		Distance									
Measured Depth (ft)	Vertical Depth (ft)	Measured Depth (ft)	Vertical Depth (ft)	Reference (ft)	Offset (ft)	Highside Toolface (°)	Offset Wellbore Centre +N/-S (ft)	+E/-W (ft)	Between Centres (ft)	Between Ellipses (ft)	Minimum Separation (ft)	Separation Factor	Warning
0.0	0.0	0.0	0.0	0.0	0.0	-91.38	-14.6	-602.5	602.8				
100.0	100.0	86.0	86.0	0.1	0.1	-91.38	-14.6	-602.5	602.7	602.5	0.21	2,882.725	
200.0	200.0	186.0	186.0	0.3	0.3	-91.38	-14.6	-602.5	602.7	602.0	0.64	937.515 CC, ES	
300.0	300.0	286.0	286.0	0.6	0.5	-172.51	-14.6	-602.5	604.4	603.3	1.09	554.249	
400.0	399.8	385.8	385.8	0.8	0.8	-172.56	-14.6	-602.5	609.6	608.0	1.54	395.620	
500.0	499.5	485.5	485.5	1.0	1.0	-172.64	-14.6	-602.5	618.2	616.2	2.00	309.711	
600.0	598.7	584.7	584.7	1.3	1.2	-172.76	-14.6	-602.5	630.3	627.9	2.45	256.812	
700.0	697.5	683.5	683.5	1.6	1.4	-172.89	-14.6	-602.5	645.8	642.9	2.92	221.539	
800.0	795.6	781.6	781.6	2.0	1.6	-173.05	-14.6	-602.5	664.8	661.4	3.38	196.748	
860.9	855.1	841.1	841.1	2.3	1.8	-173.15	-14.6	-602.5	678.0	674.3	3.66	185.117	
900.0	893.1	879.1	879.1	2.5	1.9	-173.24	-14.6	-602.5	686.9	683.0	3.84	178.676	
1,000.0	990.5	976.5	976.5	2.9	2.1	-173.46	-14.6	-602.5	709.6	705.3	4.31	164.509	
1,100.0	1,087.8	1,073.8	1,073.8	3.4	2.3	-173.66	-14.6	-602.5	732.3	727.5	4.79	152.975	
1,200.0	1,185.2	1,171.2	1,171.2	3.9	2.5	-173.85	-14.6	-602.5	755.1	749.8	5.26	143.430	
1,300.0	1,282.5	1,268.5	1,268.5	4.4	2.7	-174.03	-14.6	-602.5	777.8	772.1	5.74	135.415 SF	

Company:	Bayswater Exploration & Production, LLC	Local Co-ordinate Reference:	Well Mojack P-28HC
Project:	SEC.28-T7N-R64W	TVD Reference:	WELL @ 4923.5ft (RKB - 22.5')
Reference Site:	Mojack 28-C Pad (East) Sec.28-T7N-R64W	MD Reference:	WELL @ 4923.5ft (RKB - 22.5')
Site Error:	0.0ft	North Reference:	True
Reference Well:	Mojack P-28HC	Survey Calculation Method:	Minimum Curvature
Well Error:	0.0ft	Output errors are at	2.00 sigma
Reference Wellbore	Wellbore #1	Database:	Landmark
Reference Design:	Plan #2 (10-15-14)	Offset TVD Reference:	Offset Datum

Offset Design										Weld County 9-28 Pad Sec.28-T7N-R64W - Weld County 16-28 (Vert.) - Wellbore #1 - Wellbore #1				Offset Site Error:		0.0 ft
Survey Program: 7335-UNKNOWN												Offset Well Error:		0.0 ft		
Reference		Offset		Semi Major Axis			Distance							Warning		
Measured Depth (ft)	Vertical Depth (ft)	Measured Depth (ft)	Vertical Depth (ft)	Reference (ft)	Offset (ft)	Highside Toolface (°)	Offset Wellbore Centre +N/-S (ft)	+E/-W (ft)	Between Centres (ft)	Between Ellipses (ft)	Minimum Separation (ft)	Separation Factor				
11,200.0	7,158.3	7,119.8	7,119.8	81.0	142.4	90.00	-4,538.0	993.7	766.0	546.6	219.44	3.491				
11,300.0	7,158.3	7,119.8	7,119.8	82.7	142.4	90.00	-4,538.0	993.7	682.7	461.4	221.30	3.085				
11,400.0	7,158.3	7,119.8	7,119.8	84.5	142.4	90.00	-4,538.0	993.7	604.4	381.3	223.16	2.708				
11,500.0	7,158.3	7,119.8	7,119.8	86.3	142.4	90.00	-4,538.0	993.7	533.5	308.4	225.02	2.371				
11,600.0	7,158.3	7,119.8	7,119.8	88.1	142.4	90.00	-4,538.0	993.7	473.1	246.2	226.89	2.085				
11,700.0	7,158.3	7,119.8	7,119.8	89.9	142.4	90.00	-4,538.0	993.7	427.9	199.2	228.76	1.871				
11,800.0	7,158.2	7,119.7	7,119.7	91.7	142.4	90.00	-4,538.0	993.7	403.0	172.3	230.63	1.747				
11,853.7	7,158.2	7,119.7	7,119.7	92.6	142.4	90.00	-4,538.0	993.7	399.4	167.7	231.63	1.724	CC, ES, SF			
11,900.0	7,158.2	7,119.7	7,119.7	93.5	142.4	90.00	-4,538.0	993.7	402.1	169.6	232.50	1.729				
12,000.0	7,158.2	7,119.7	7,119.7	95.3	142.4	90.00	-4,538.0	993.7	425.3	191.0	234.37	1.815				
12,100.0	7,158.2	7,119.7	7,119.7	97.1	142.4	90.00	-4,538.0	993.7	469.2	233.0	236.25	1.986				
12,200.0	7,158.2	7,119.7	7,119.7	98.9	142.4	90.00	-4,538.0	993.7	528.6	290.5	238.12	2.220				
12,300.0	7,158.2	7,119.7	7,119.7	100.7	142.4	90.00	-4,538.0	993.7	598.9	358.9	240.00	2.496				
12,400.0	7,158.2	7,119.7	7,119.7	102.5	142.4	90.00	-4,538.0	993.7	676.7	434.9	241.88	2.798				
12,500.0	7,158.2	7,119.7	7,119.7	104.4	142.4	90.00	-4,538.0	993.7	759.8	516.0	243.76	3.117				

Company:	Bayswater Exploration & Production, LLC	Local Co-ordinate Reference:	Well Mojack P-28HC
Project:	SEC.28-T7N-R64W	TVD Reference:	WELL @ 4923.5ft (RKB - 22.5')
Reference Site:	Mojack 28-C Pad (East) Sec.28-T7N-R64W	MD Reference:	WELL @ 4923.5ft (RKB - 22.5')
Site Error:	0.0ft	North Reference:	True
Reference Well:	Mojack P-28HC	Survey Calculation Method:	Minimum Curvature
Well Error:	0.0ft	Output errors are at	2.00 sigma
Reference Wellbore	Wellbore #1	Database:	Landmark
Reference Design:	Plan #2 (10-15-14)	Offset TVD Reference:	Offset Datum

Offset Design Weld County 9-28 Pad Sec.28-T7N-R64W - Weld County 9-28 - Wellbore #1 - Wellbore #1												Offset Site Error:	0.0 ft
Survey Program: 802-MWD												Offset Well Error:	0.0 ft
Reference		Offset		Semi Major Axis			Distance						
Measured Depth (ft)	Vertical Depth (ft)	Measured Depth (ft)	Vertical Depth (ft)	Reference (ft)	Offset (ft)	Highside Toolface (°)	Offset Wellbore Centre +N/-S (ft)	+E/-W (ft)	Between Centres (ft)	Between Ellipses (ft)	Minimum Separation (ft)	Separation Factor	Warning
9,800.0	7,158.3	7,340.8	7,091.4	57.2	28.9	87.32	-3,083.3	908.7	795.9	715.9	79.99	9.950	
9,900.0	7,158.3	7,347.6	7,098.3	58.8	28.9	88.07	-3,083.7	908.9	723.3	641.4	81.88	8.833	
10,000.0	7,158.3	7,354.4	7,105.0	60.4	28.9	88.81	-3,084.2	909.1	657.8	574.0	83.77	7.853	
10,100.0	7,158.3	7,361.0	7,111.5	62.1	28.9	89.53	-3,084.6	909.3	601.8	516.1	85.65	7.026	
10,200.0	7,158.3	7,367.4	7,118.0	63.7	28.9	90.24	-3,085.1	909.5	558.1	470.6	87.52	6.377	
10,300.0	7,158.3	7,373.8	7,124.3	65.4	28.9	90.94	-3,085.5	909.6	529.9	440.5	89.39	5.928	
10,400.0	7,158.3	7,380.0	7,130.6	67.1	28.9	91.63	-3,085.9	909.8	519.6	428.4	91.25	5.695	
10,404.1	7,158.3	7,380.3	7,130.8	67.2	28.9	91.65	-3,085.9	909.8	519.6	428.3	91.32	5.690 CC, ES	
10,500.0	7,158.3	7,386.2	7,136.7	68.8	28.9	92.30	-3,086.3	910.0	528.4	435.3	93.10	5.675 SF	
10,600.0	7,158.3	7,392.2	7,142.7	70.5	28.9	92.96	-3,086.7	910.1	555.2	460.2	94.94	5.848	
10,700.0	7,158.3	7,398.1	7,148.6	72.2	28.9	93.61	-3,087.0	910.3	597.7	500.9	96.78	6.176	
10,800.0	7,158.3	7,403.9	7,154.4	73.9	28.9	94.25	-3,087.4	910.4	652.8	554.2	98.61	6.620	
10,900.0	7,158.3	7,409.6	7,160.0	75.7	28.9	94.87	-3,087.7	910.6	717.6	617.2	100.43	7.146	
11,000.0	7,158.3	7,415.2	7,165.6	77.4	28.9	95.49	-3,088.1	910.7	789.8	687.5	102.24	7.725	

Company:	Bayswater Exploration & Production, LLC	Local Co-ordinate Reference:	Well Mojack P-28HC
Project:	SEC.28-T7N-R64W	TVD Reference:	WELL @ 4923.5ft (RKB - 22.5')
Reference Site:	Mojack 28-C Pad (East) Sec.28-T7N-R64W	MD Reference:	WELL @ 4923.5ft (RKB - 22.5')
Site Error:	0.0ft	North Reference:	True
Reference Well:	Mojack P-28HC	Survey Calculation Method:	Minimum Curvature
Well Error:	0.0ft	Output errors are at	2.00 sigma
Reference Wellbore	Wellbore #1	Database:	Landmark
Reference Design:	Plan #2 (10-15-14)	Offset TVD Reference:	Offset Datum

Reference Depths are relative to WELL @ 4923.5ft (RKB - 22.5')

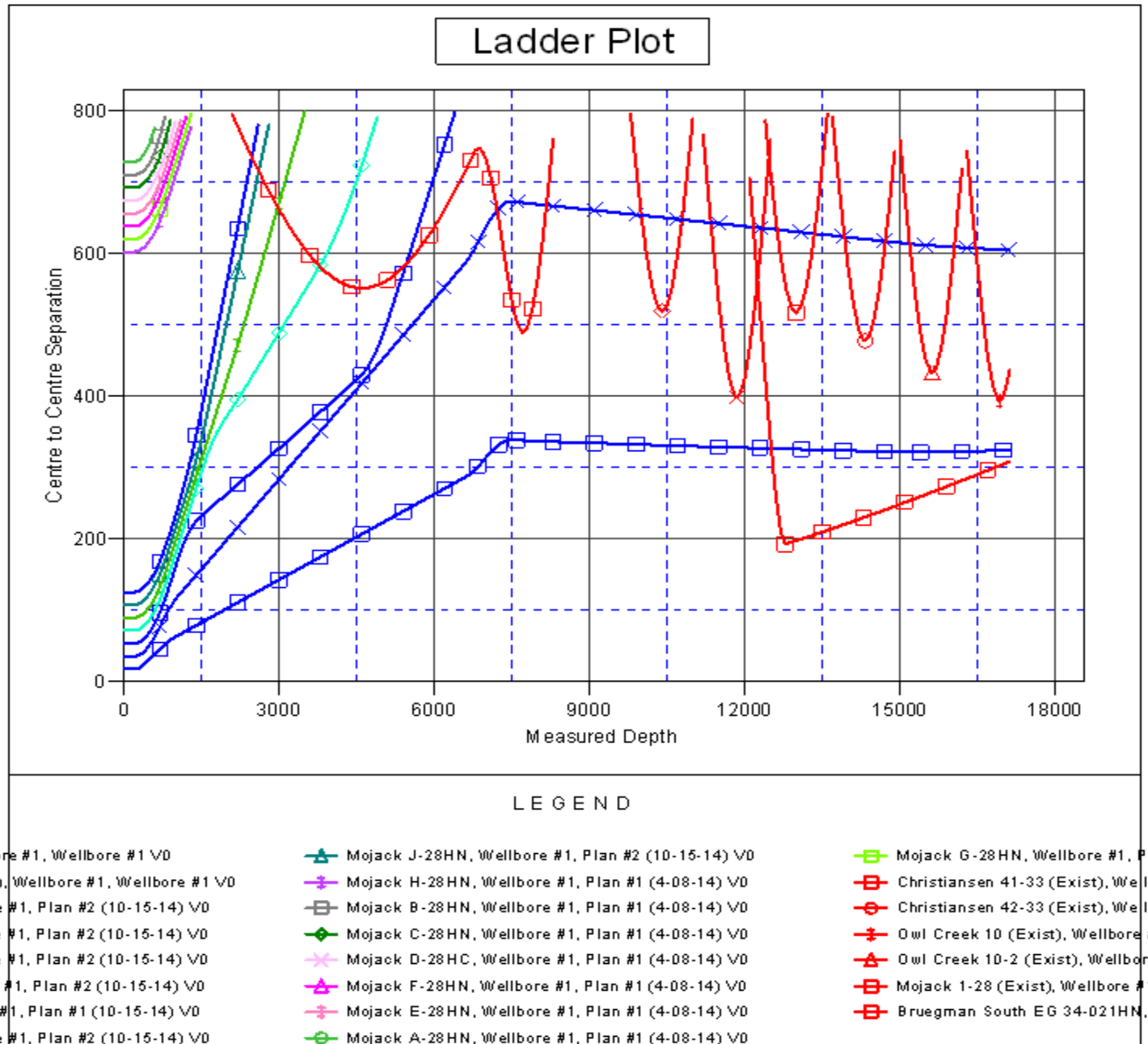
Coordinates are relative to: Mojack P-28HC

Offset Depths are relative to Offset Datum

Coordinate System is US State Plane 1983, Colorado Northern Zone

Central Meridian is -105.500000 °

Grid Convergence at Surface is: 0.61°



Company:	Bayswater Exploration & Production, LLC	Local Co-ordinate Reference:	Well Mojack P-28HC
Project:	SEC.28-T7N-R64W	TVD Reference:	WELL @ 4923.5ft (RKB - 22.5')
Reference Site:	Mojack 28-C Pad (East) Sec.28-T7N-R64W	MD Reference:	WELL @ 4923.5ft (RKB - 22.5')
Site Error:	0.0ft	North Reference:	True
Reference Well:	Mojack P-28HC	Survey Calculation Method:	Minimum Curvature
Well Error:	0.0ft	Output errors are at	2.00 sigma
Reference Wellbore	Wellbore #1	Database:	Landmark
Reference Design:	Plan #2 (10-15-14)	Offset TVD Reference:	Offset Datum

Reference Depths are relative to WELL @ 4923.5ft (RKB - 22.5')

Offset Depths are relative to Offset Datum

Central Meridian is -105.500000 °

Coordinates are relative to: Mojack P-28HC

Coordinate System is US State Plane 1983, Colorado Northern Zone

Grid Convergence at Surface is: 0.61°

