



RADIAL BOND LOG
GAMMA RAY
CCL

Company BILL BARRETT CORPORATION
Well FIDUCIAL 6-62-34-4841BH2
Field WATTENBERG
County WELD
State COLORADO

Company BILL BARRETT CORPORATION
Well FIDUCIAL 6-62-34-4841BH2
Field WATTENBERG
County WELD State COLORADO

Location: SHL: 2330' FSL & 370' FWL NW/SW
API # : 05-123-39262
Other Services
Permanent Datum G.L. Elevation 4685'
Log Measured From K.B. 22'
Drilling Measured From K.B.
SEC 34 TWP 6N RGE 62W

Date 9-23-2014

Run Number ONE
Depth Driller 16141'
Depth Logger 5808'
Bottom Logged Interval 5808'
Top Log Interval SURFACE
Open Hole Size 8.75
Type Fluid WATER
Density / Viscosity 1.0
Max. Recorded Temp. 174 DEG F
Estimated Cement Top 508'
Time Well Ready N/A
Time Logger on Bottom N/A
Equipment Number 4310
Location GREELEY CO.
Recorded By N. BREHMER
Witnessed By B. ODO NOVAN

Borehole Record				Tubing Record			
Run Number	Bit	From	To	Size	Weight	From	To
ONE	13.5"	SURFACE	825'				
TWO	8.75"	825'	6618'				
THREE	6.125"	6618'	16141'				

Casing Record	Size	Wgt/Ft	Top	Bottom
Surface String	9.625"	36#	SURFACE	825'
Prot. String				
Production String	7"	26#	SURFACE	6618'
Liner	4.5"	11.6#	5565'	16131'

<<< Fold Here >>>

All interpretations are opinions based on inferences from electrical or other measurements and we cannot and do not guarantee the accuracy or correctness of any interpretation, and we shall not, except in the case of gross or willful negligence on our part, be liable or responsible for any loss, costs, damages, or expenses incurred or sustained by anyone resulting from any interpretation made by any of our officers, agents or employees. These interpretations are also subject to our general terms and conditions set out in our current Price Schedule.

Comments

RAN CBL TO VERIFY CEMENT BOND
CORRELATED TO LINER HANGER @5565'
CORRECTED 10' UP HOLE

THANK YOU FOR USING WARRIOR ENERGY SERVICES

Sensor	Offset (ft)	Schematic	Description	Len (ft)	OD (in)	Wt (lb)

Tool Joint	Length (ft)	Weight (lb)	O.D. (in)	Notes
HEADVOLT	16.13			
IntTemp	14.71			
WVFS3FT	11.46			
WVFCAL	11.46			
WVFS1	11.46			
WVFS2	11.46			
WVFS3	11.46			
WVFS4	11.46			
WVFS5	11.46			
WVFS6	11.46			
WVFS7	11.46			
WVFS8	11.46			
WVF5FT	10.46			
CNLSC	6.00			
CNSSC	5.17			
CCL	3.64			
GR	0.90			
PTS275	2.83	2.75		
RBT-Probe (Base)	8.92	2.75	90.00	Probe Radii Bond Tool with Digital Telemetry
CNT-Probe_B (275)	2.88	2.75	40.00	6 bow centralizer
GR-Probe (275)	4.33	2.75	30.00	Probe 2.75"

Dataset:

fiducial 6-62-34.db: field/well/run1/pass2

Total Length:

18.96 ft

Total Weight:

160.00 lb

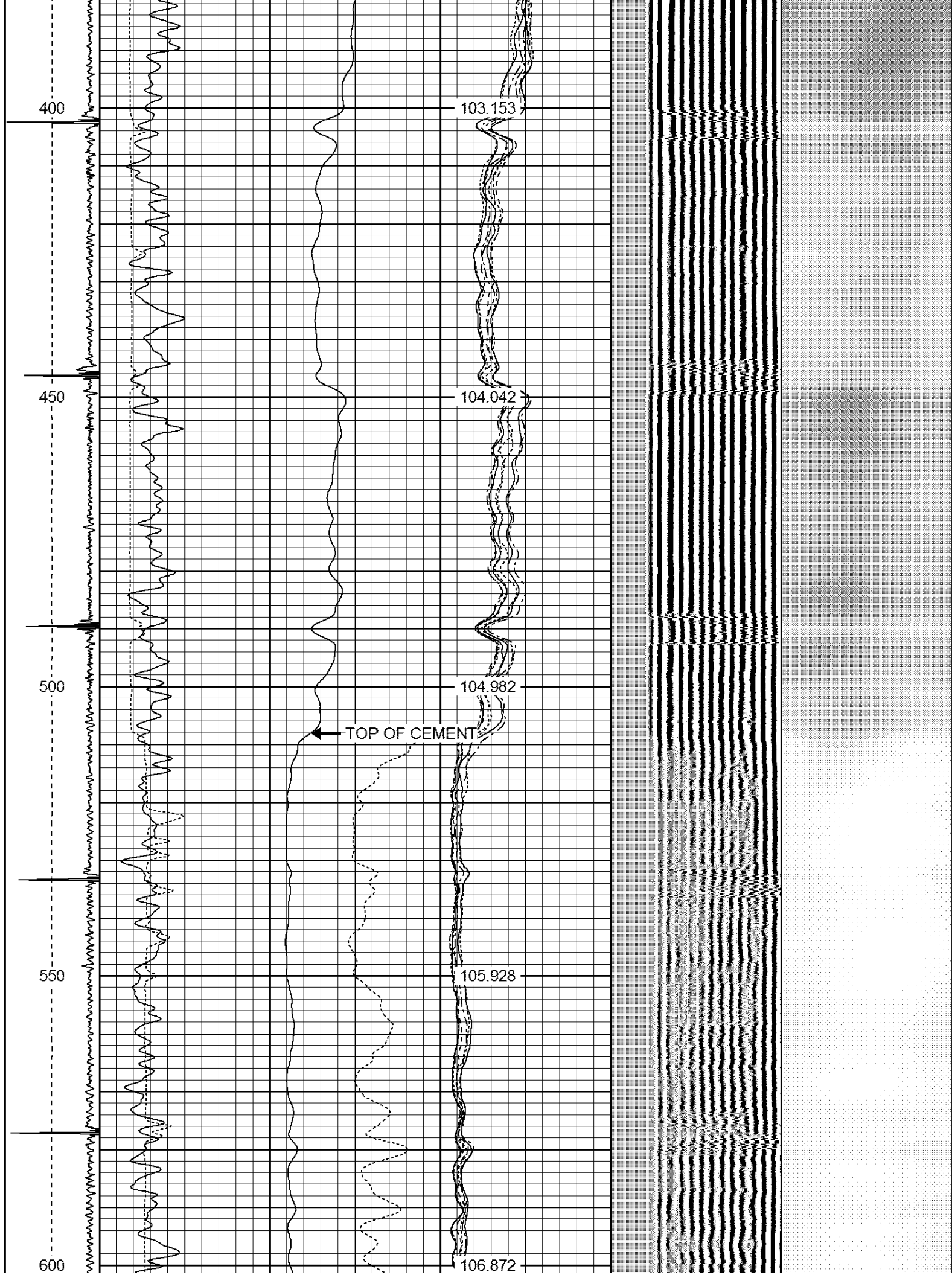
O.D.

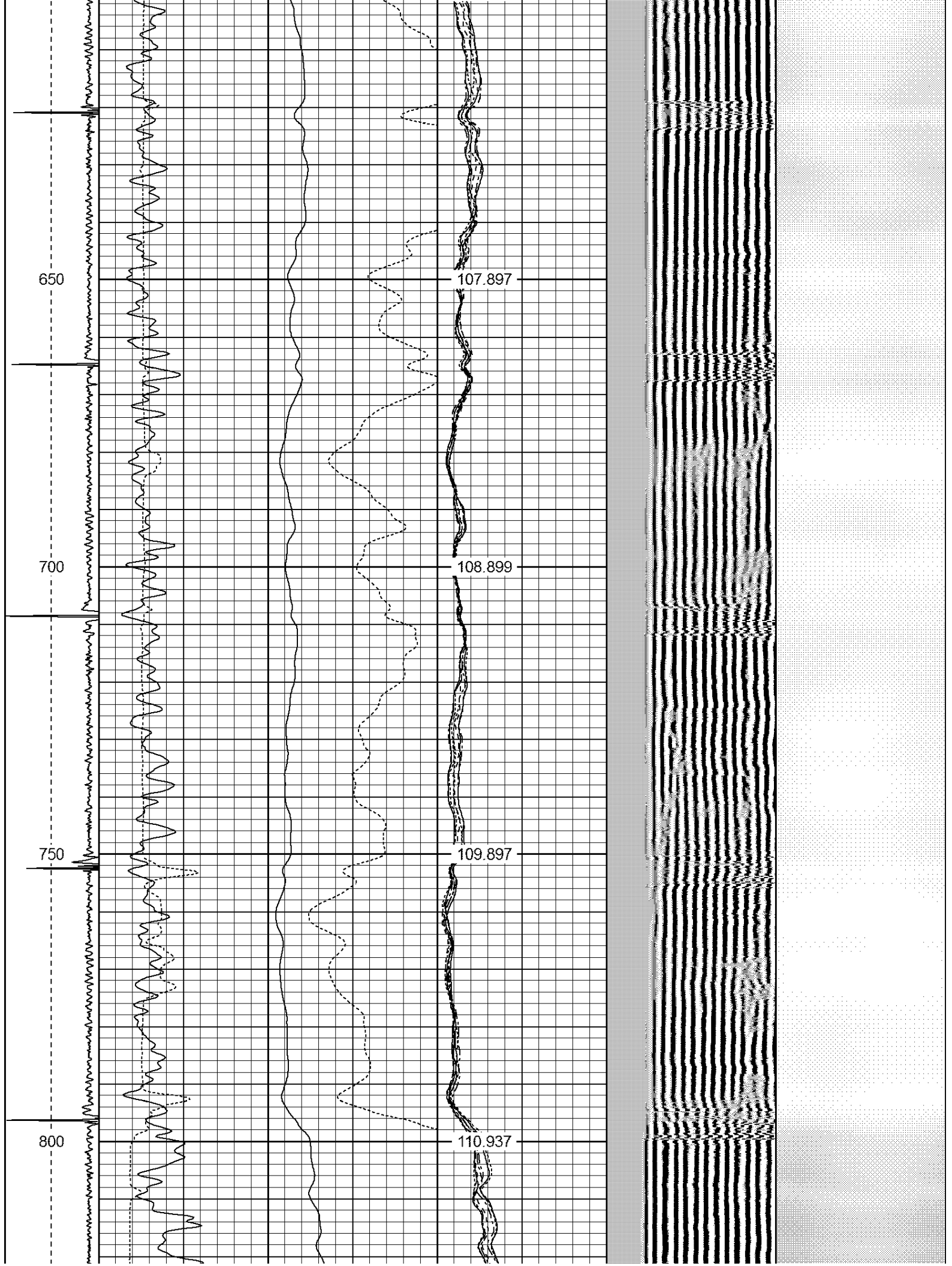
2.75 in

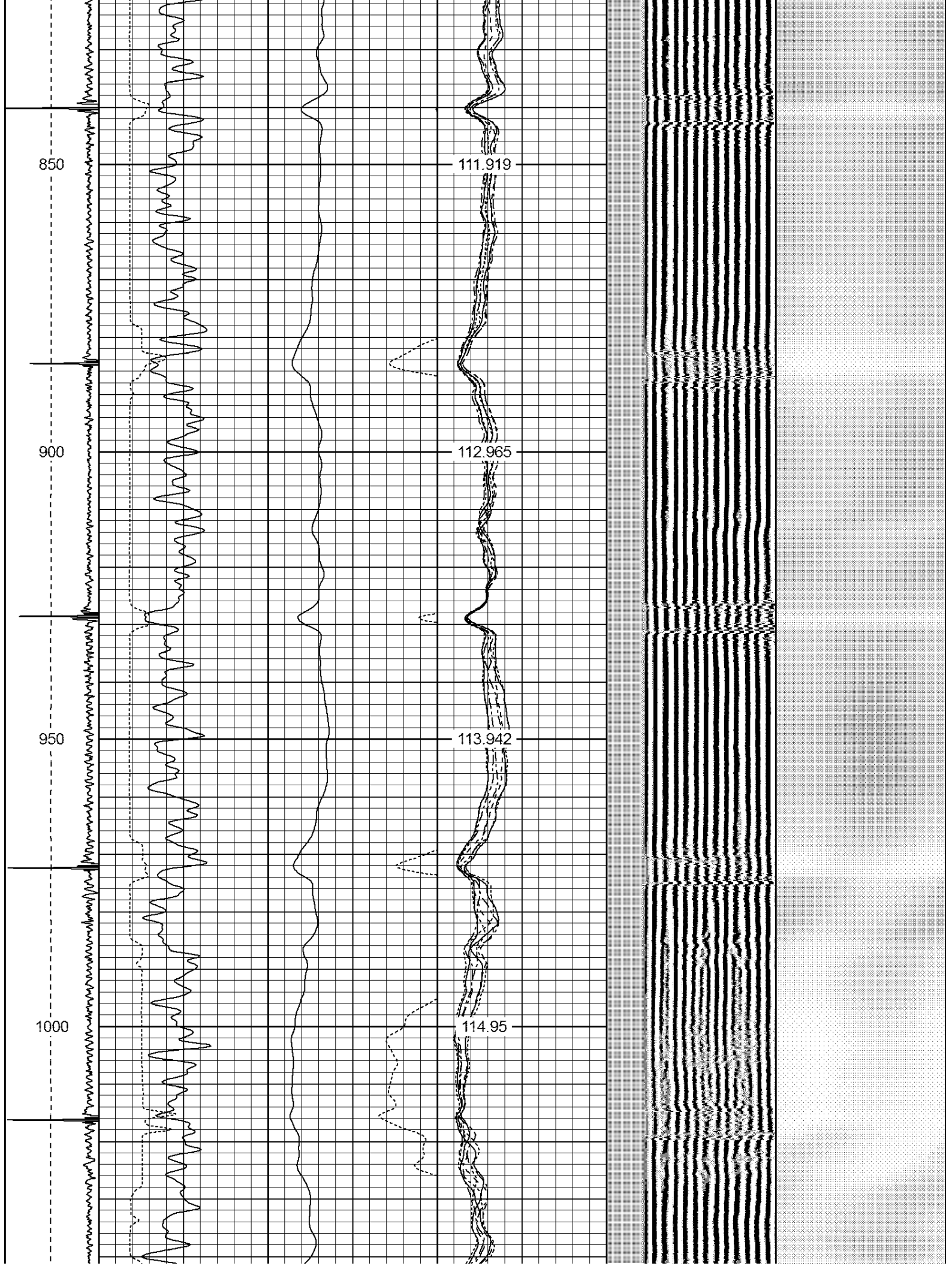
-9	CCL	1	200	TT (usec)	800	0	AMP (mV)	100	0	AMPS1	100	200	VDL	1200	1	Cement Map	8
LSPD (ft/min)	0		GR (GAPI)		200	0	AMPx5 (mV)	20	0	AMPS2	100			1			
	200		GR (GAPI)		400	0			AMPS4	100							
0									0	AMPS5	100						
250									0	AMPS6	100						
									0	AMPS7	100						
									0	AMPS8	100						
									IntTemp								
									(degF)								

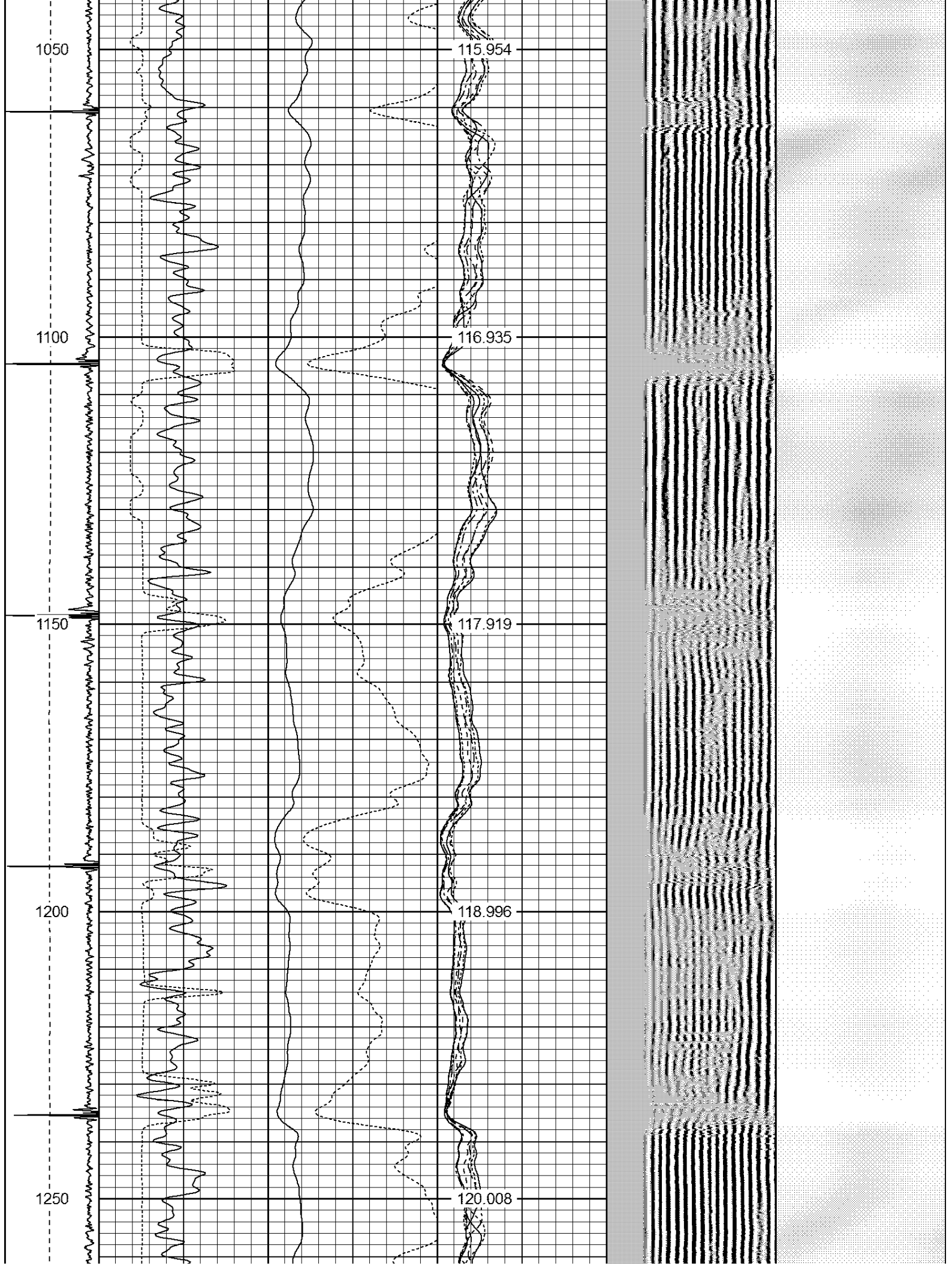


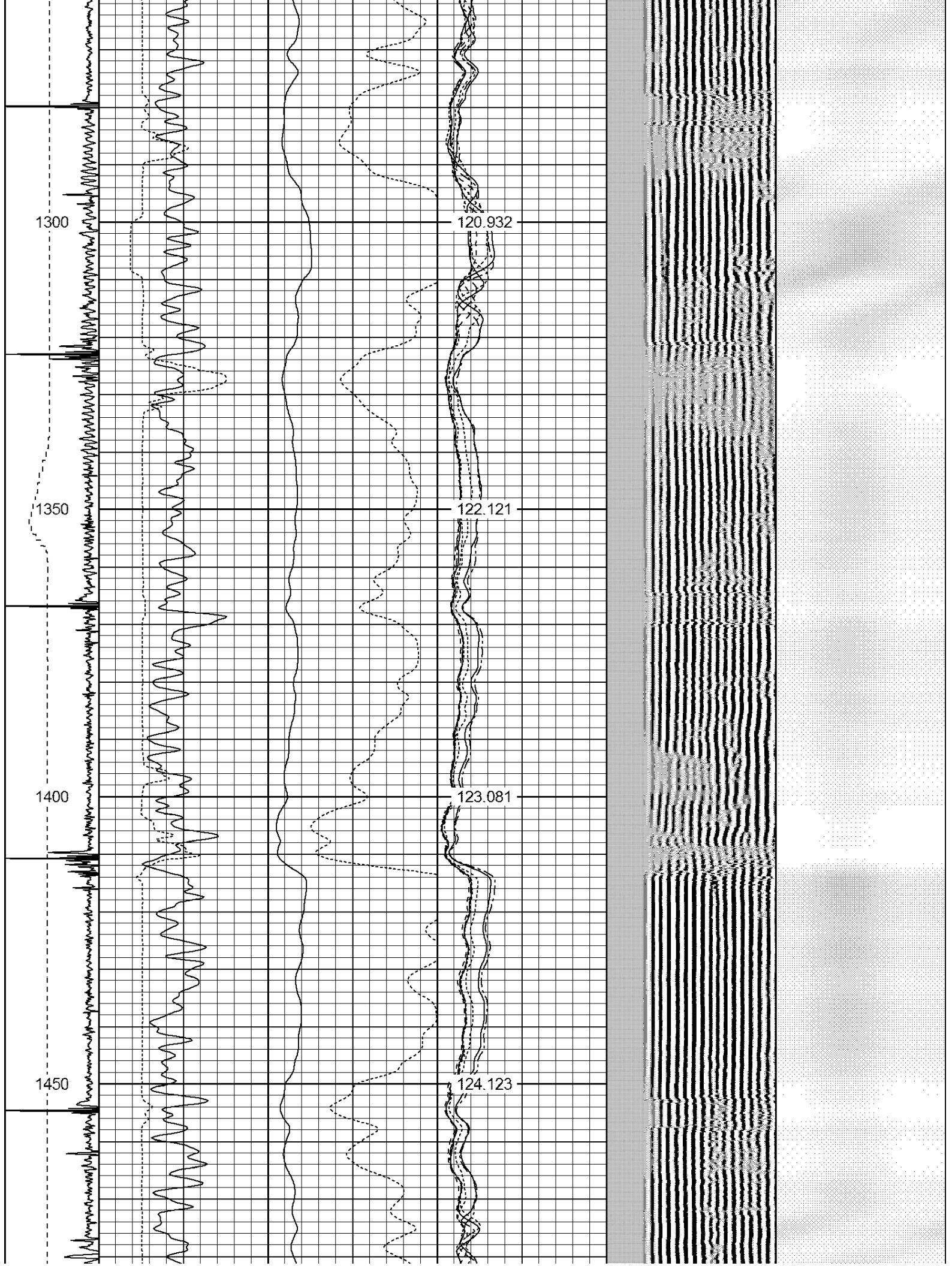


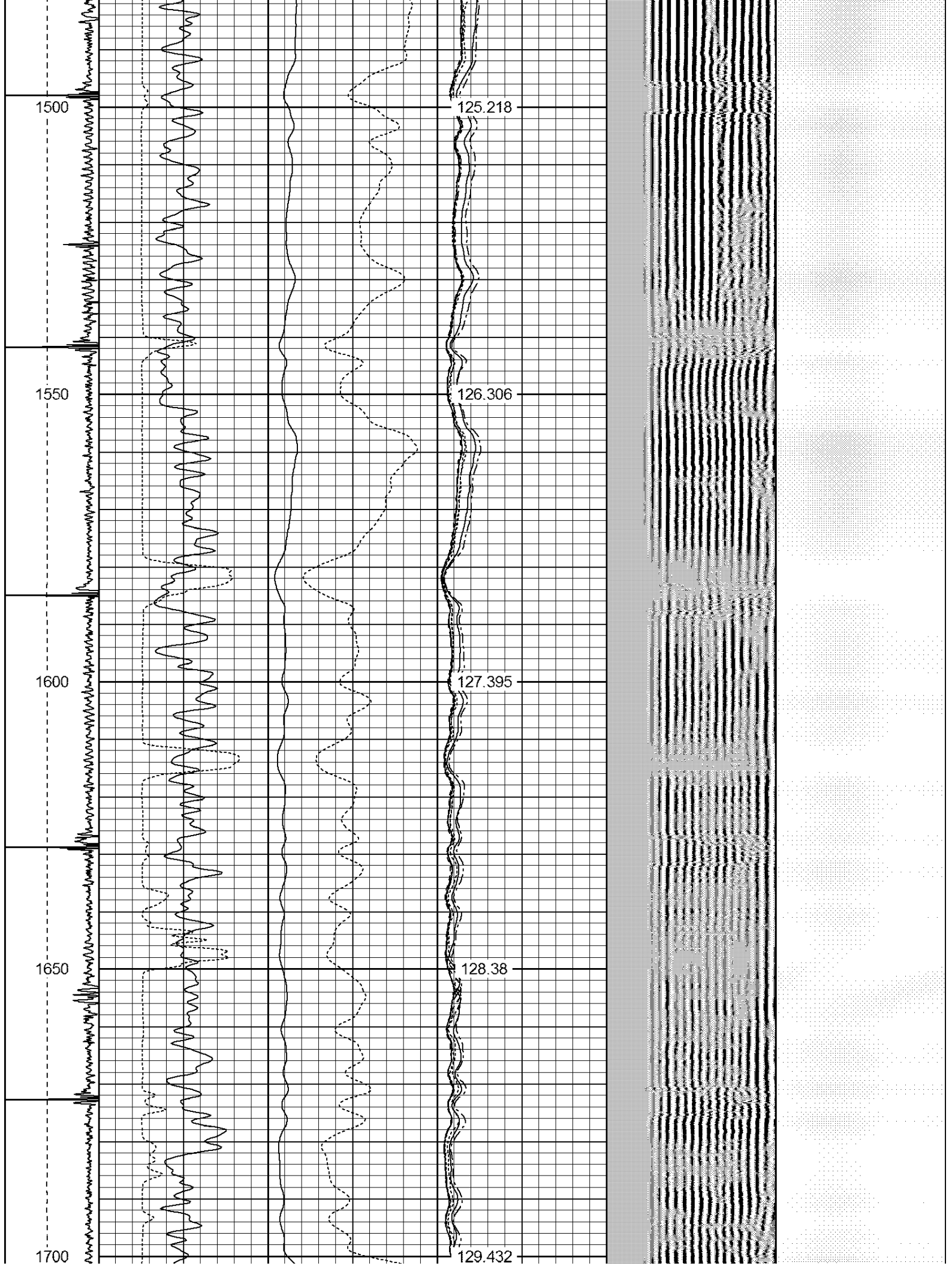




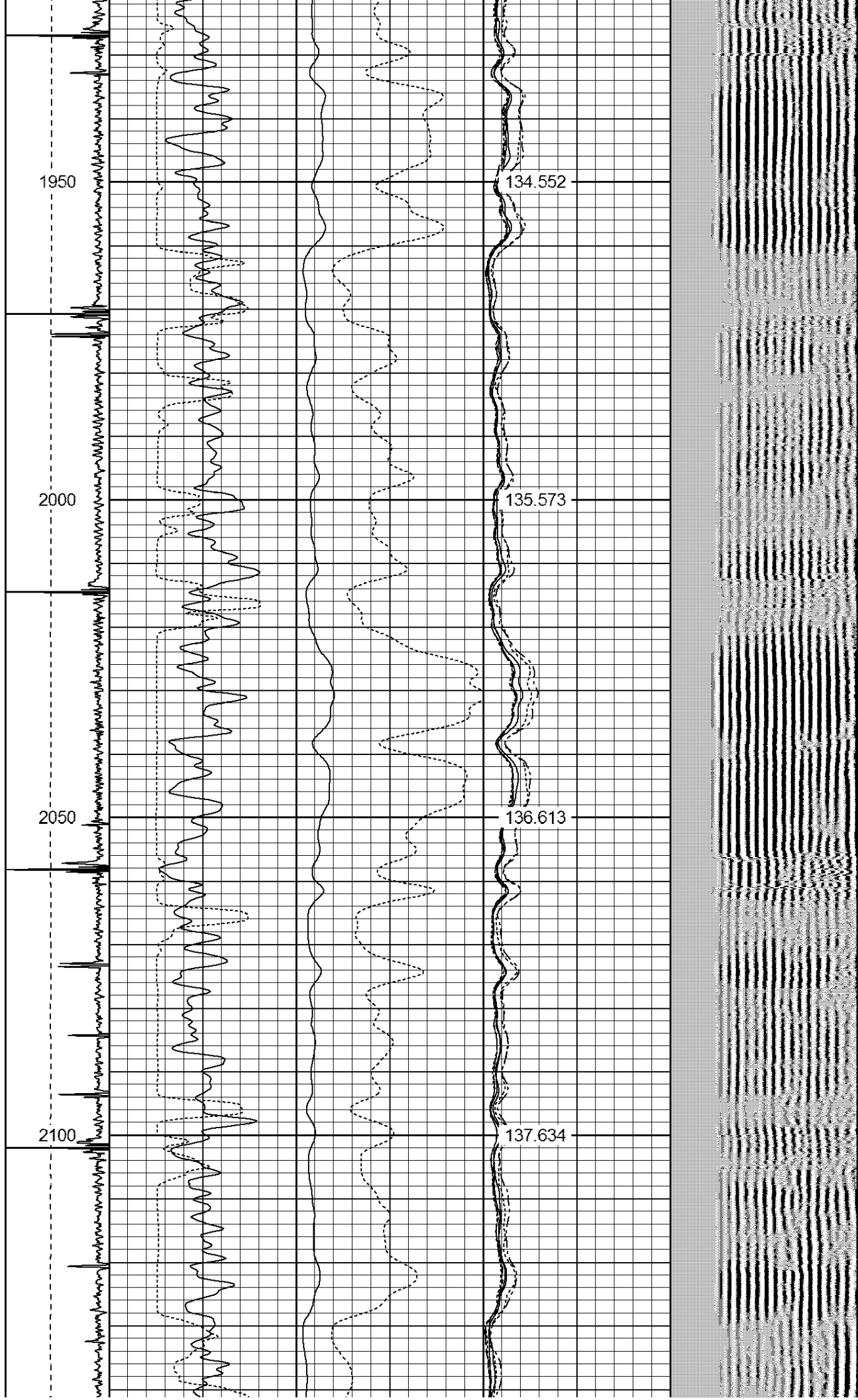


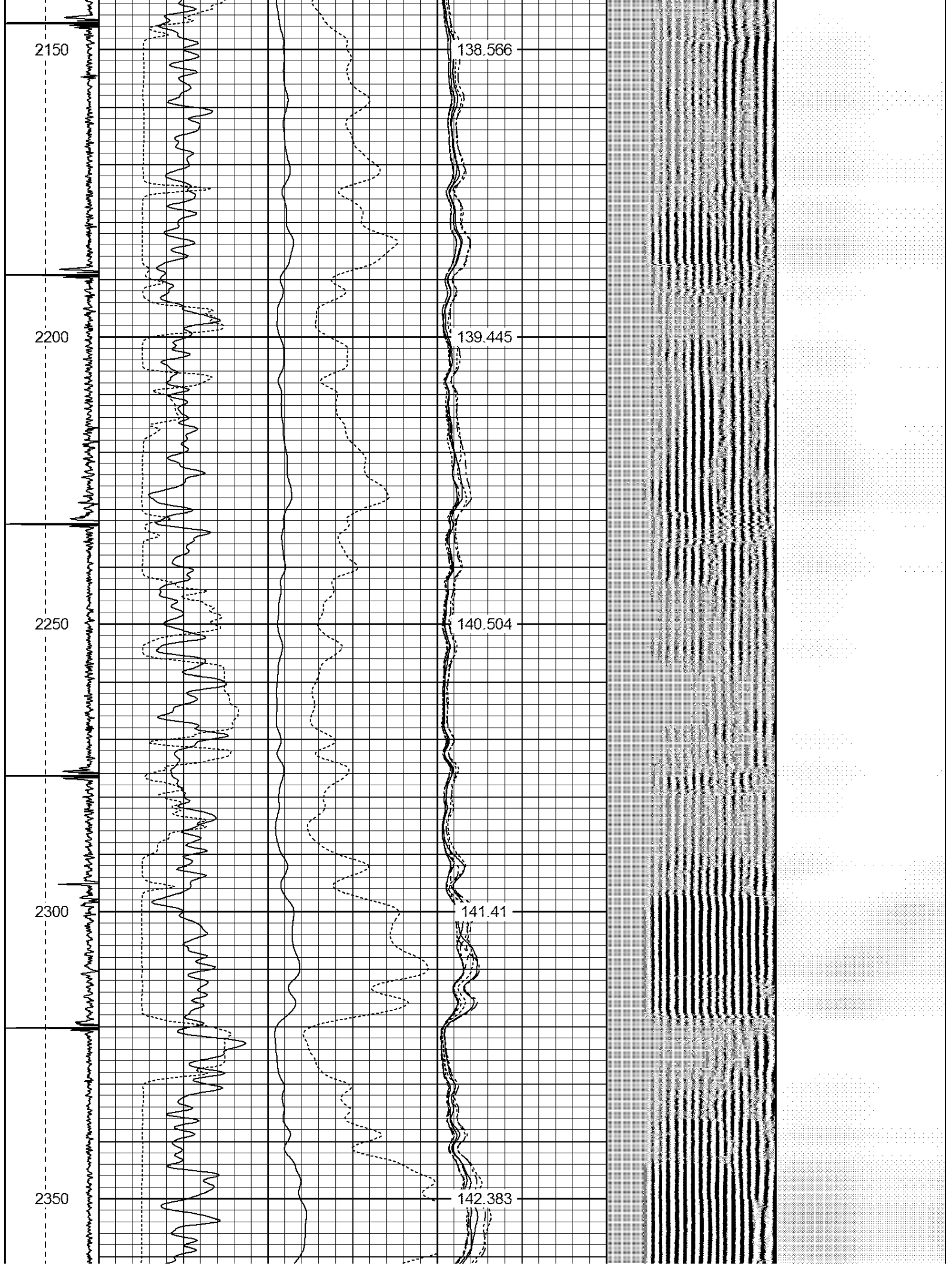


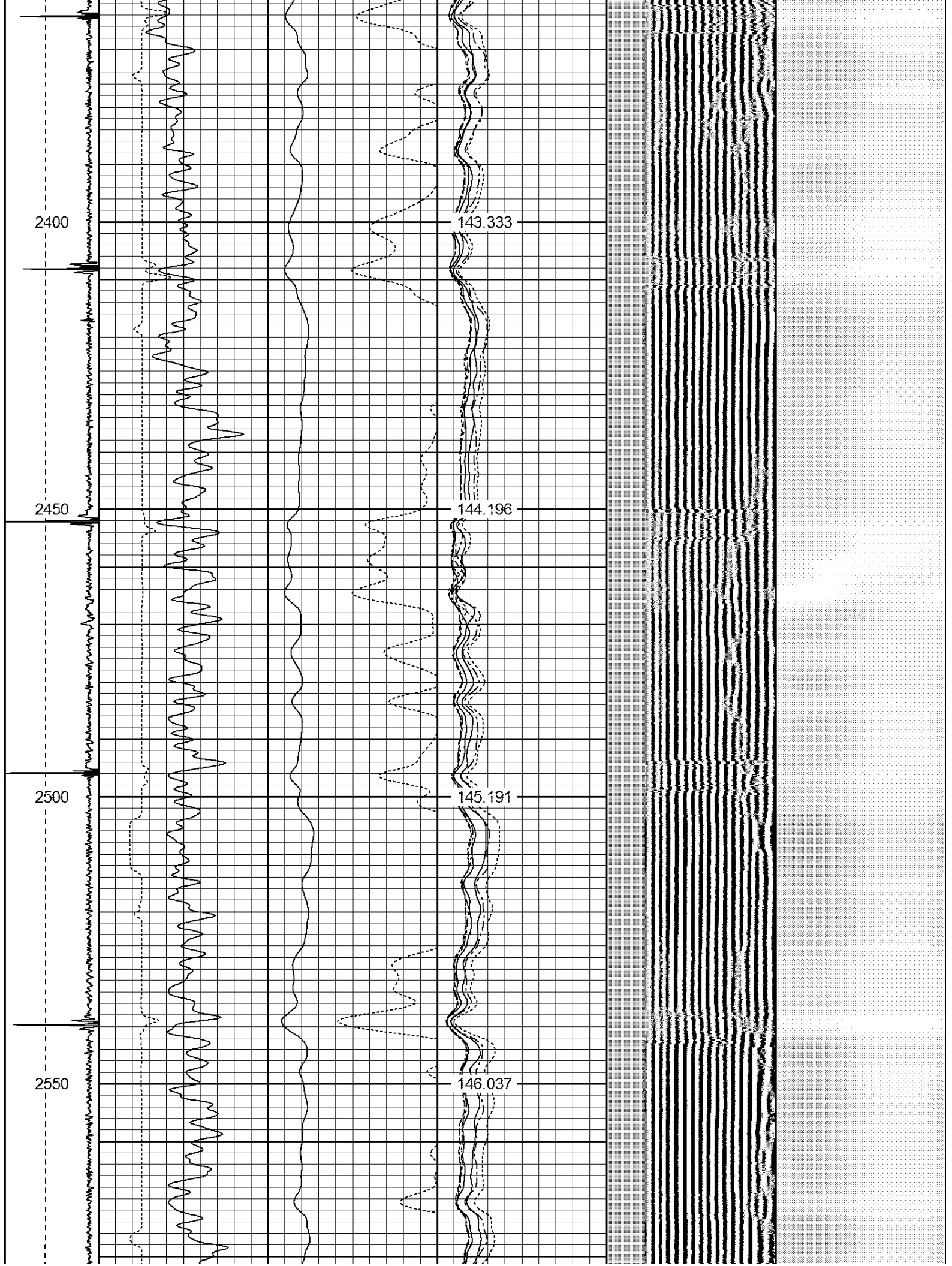


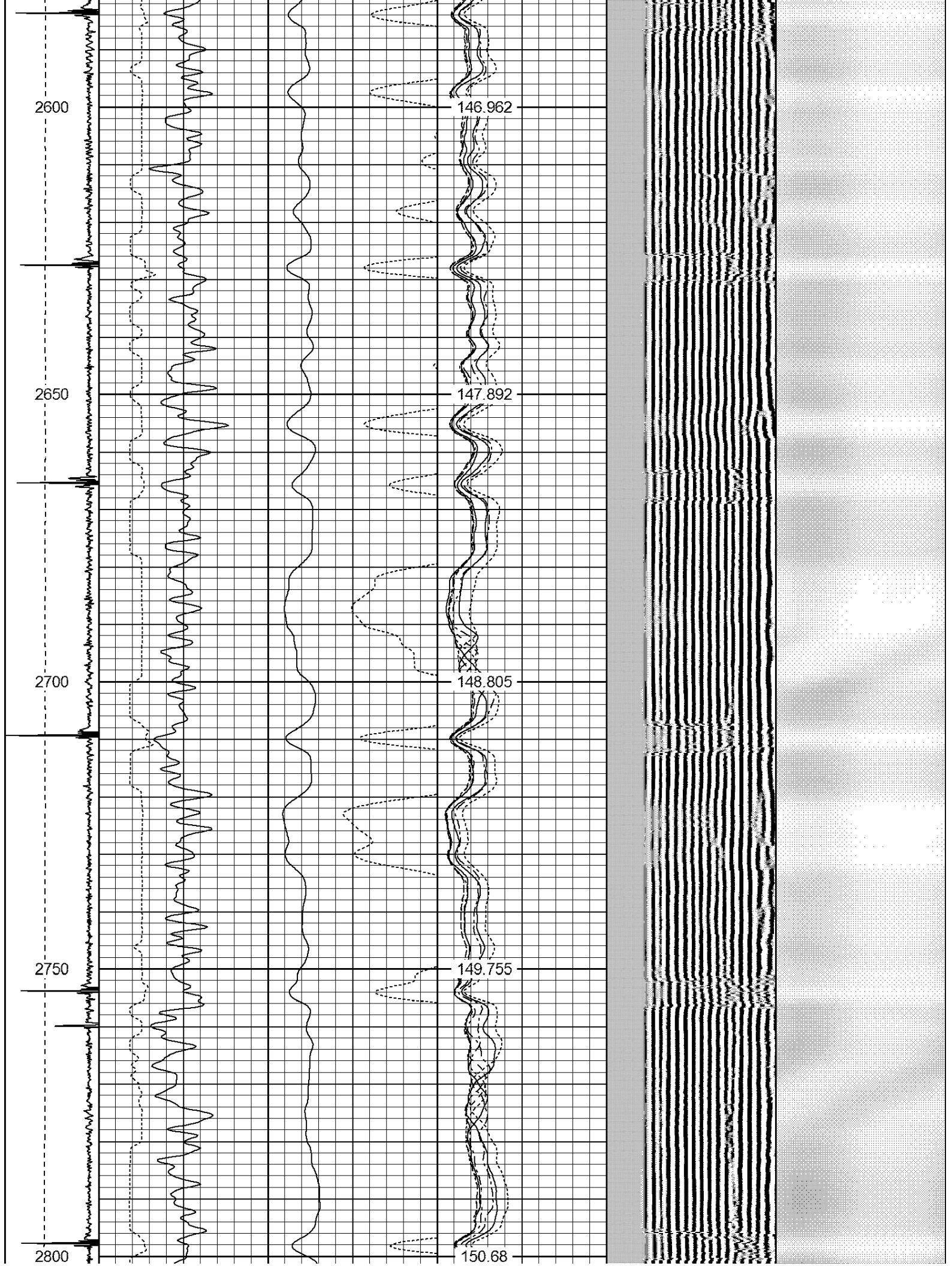


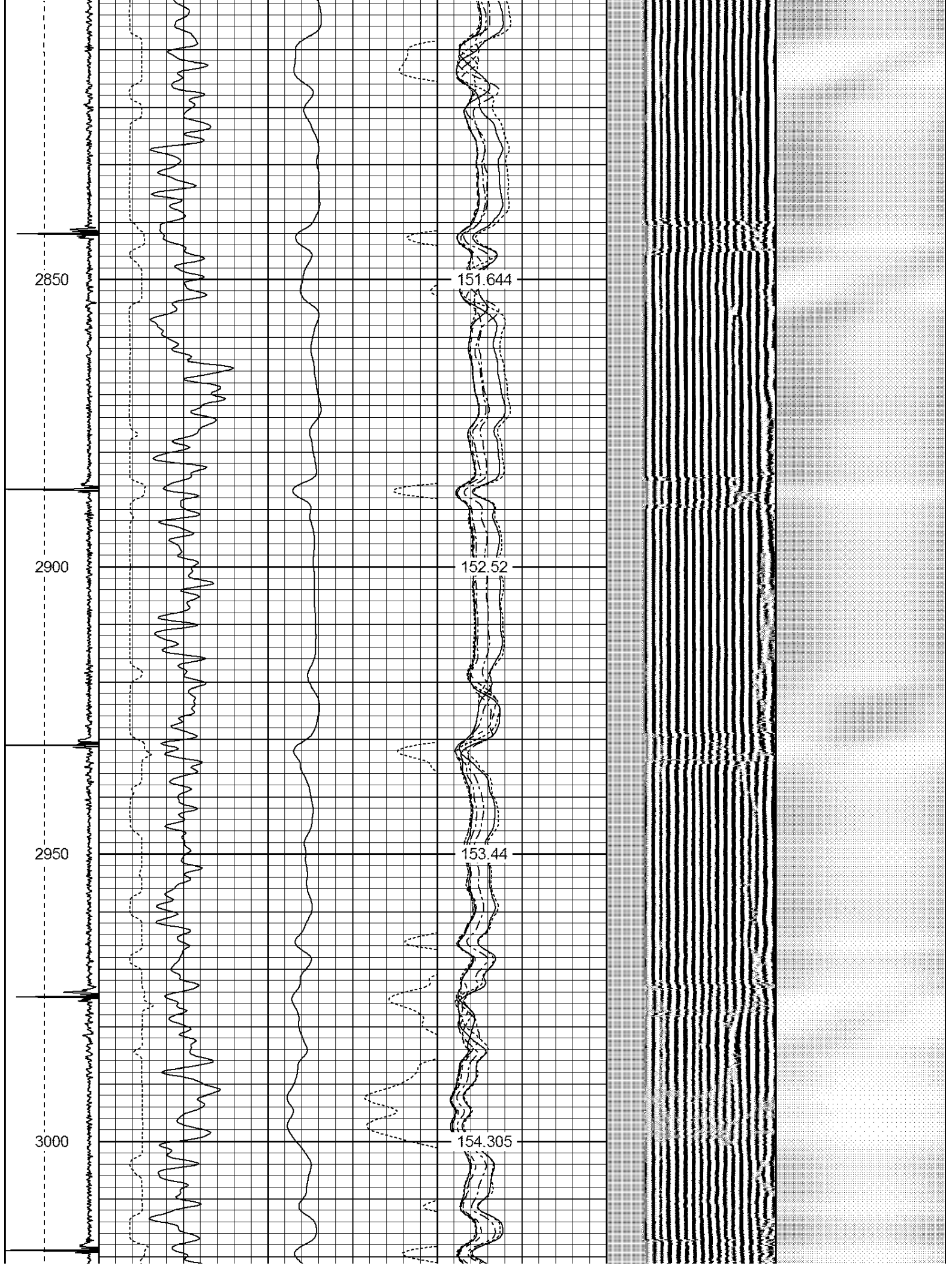


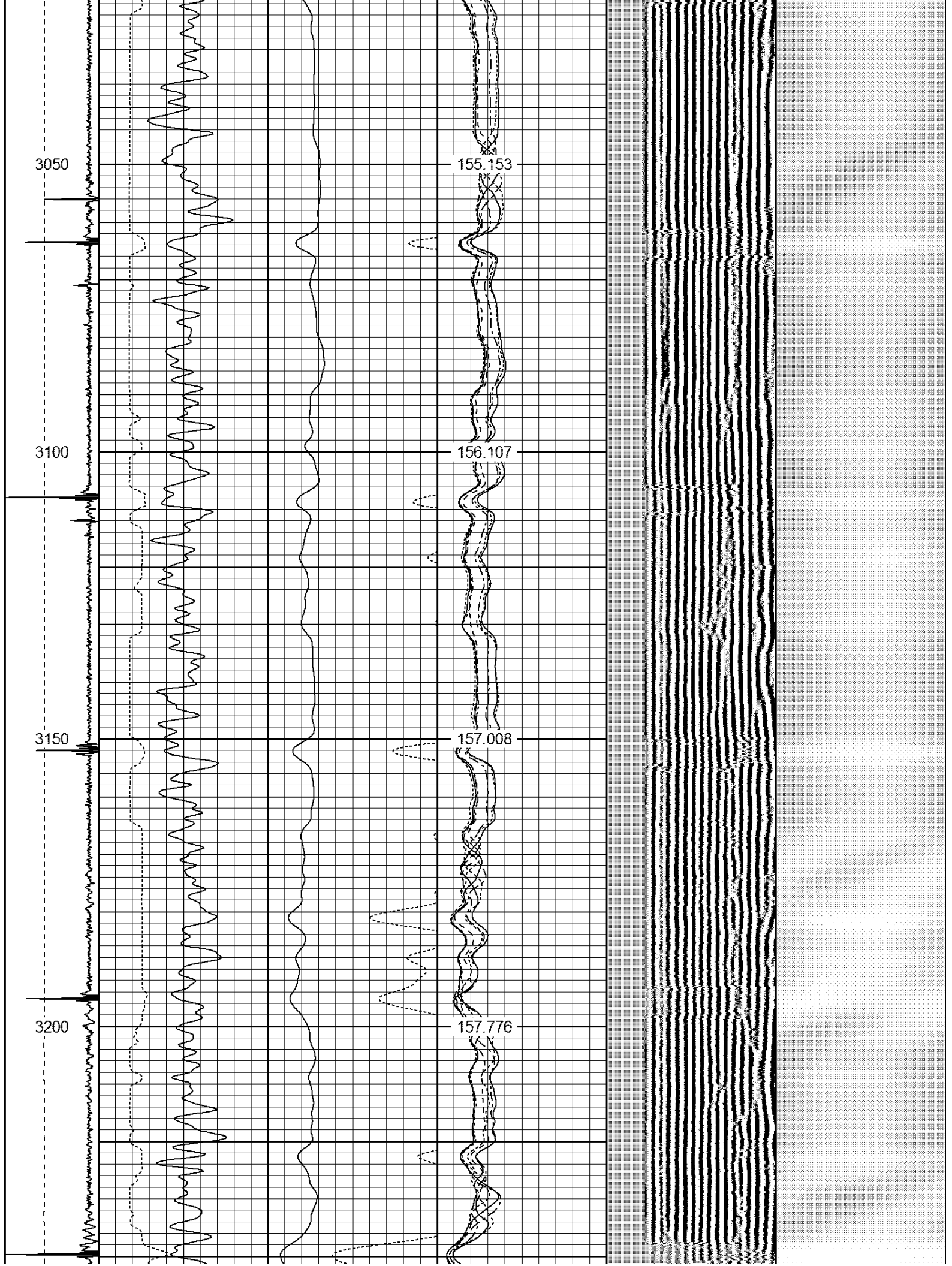


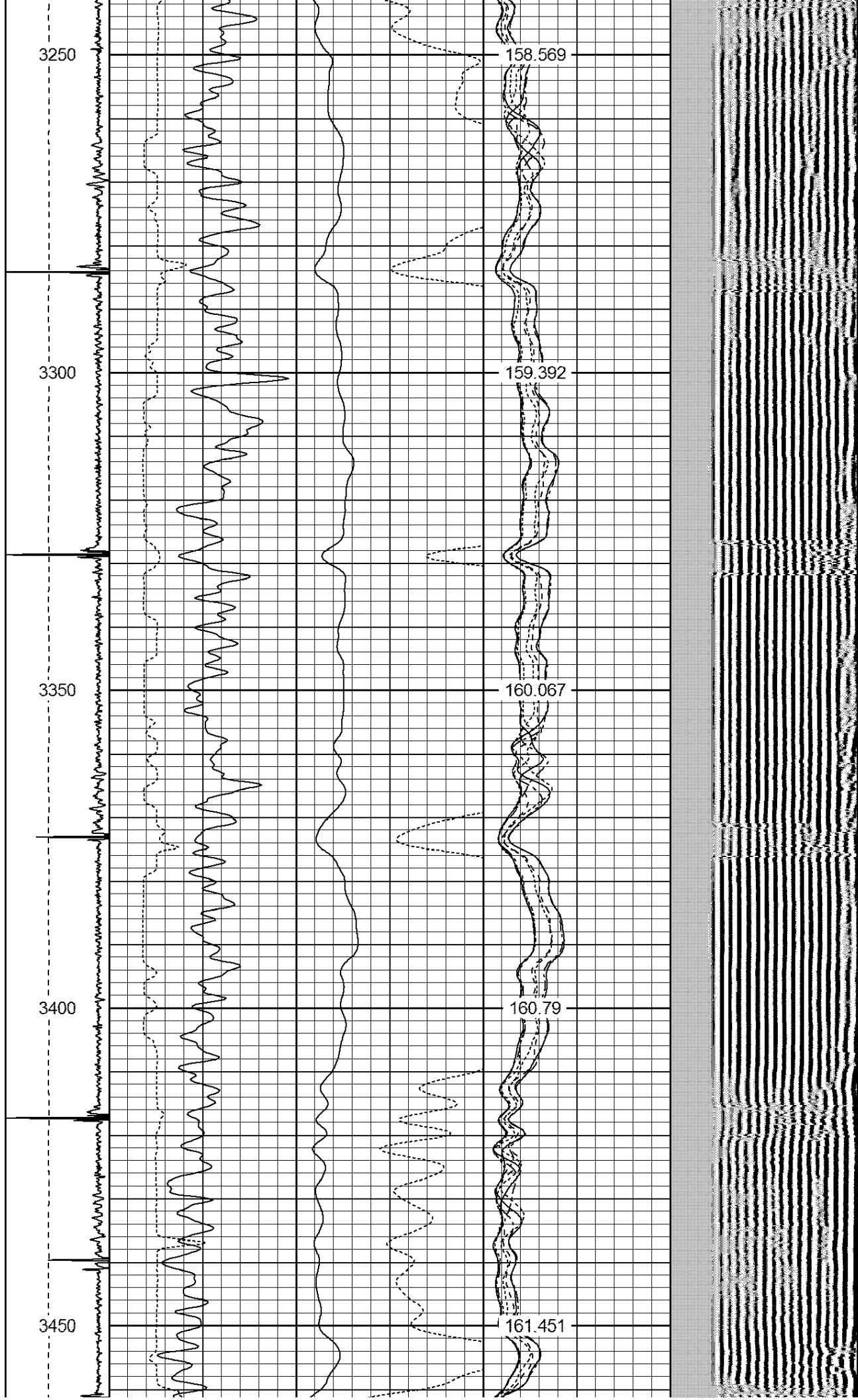


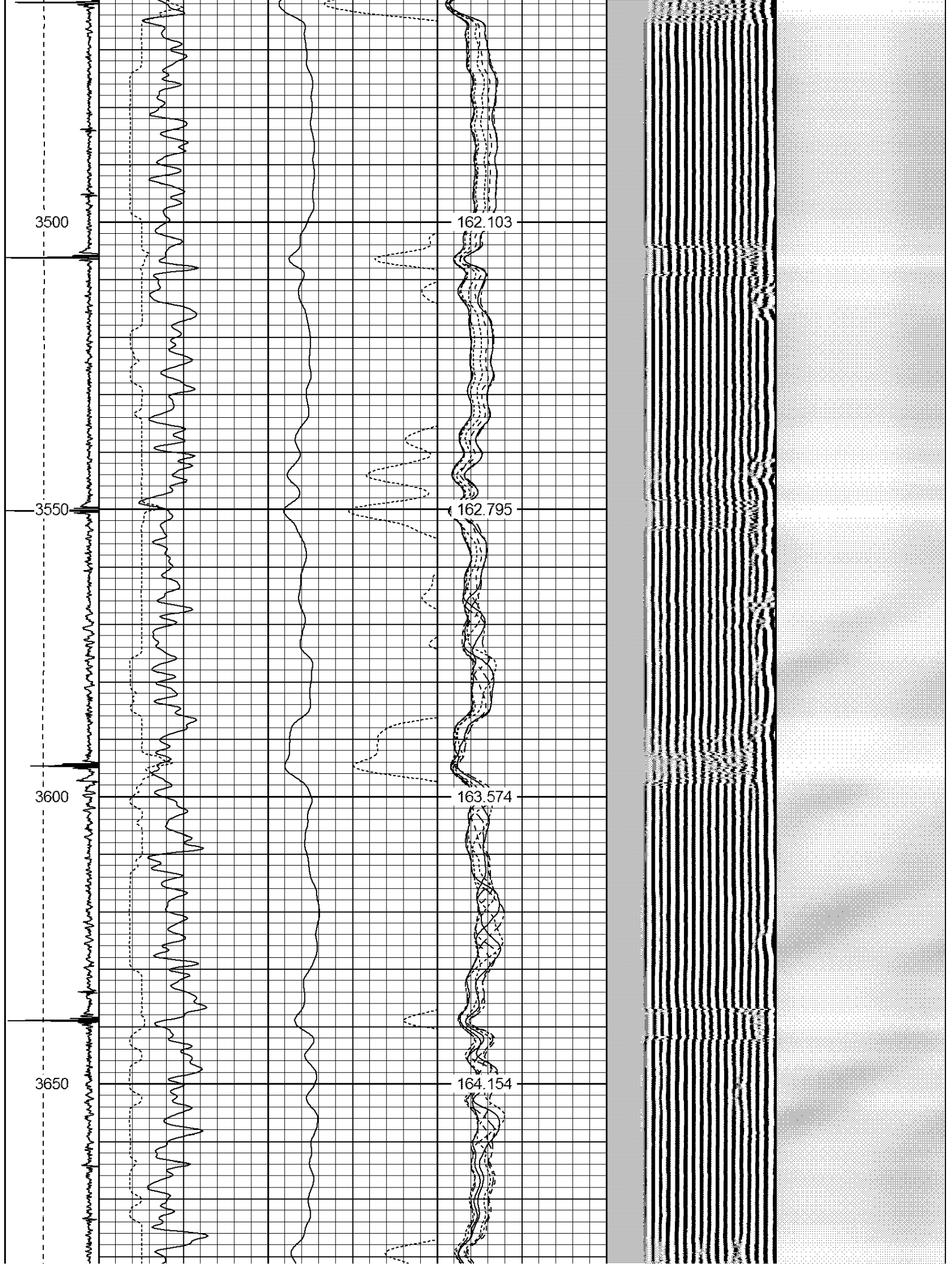


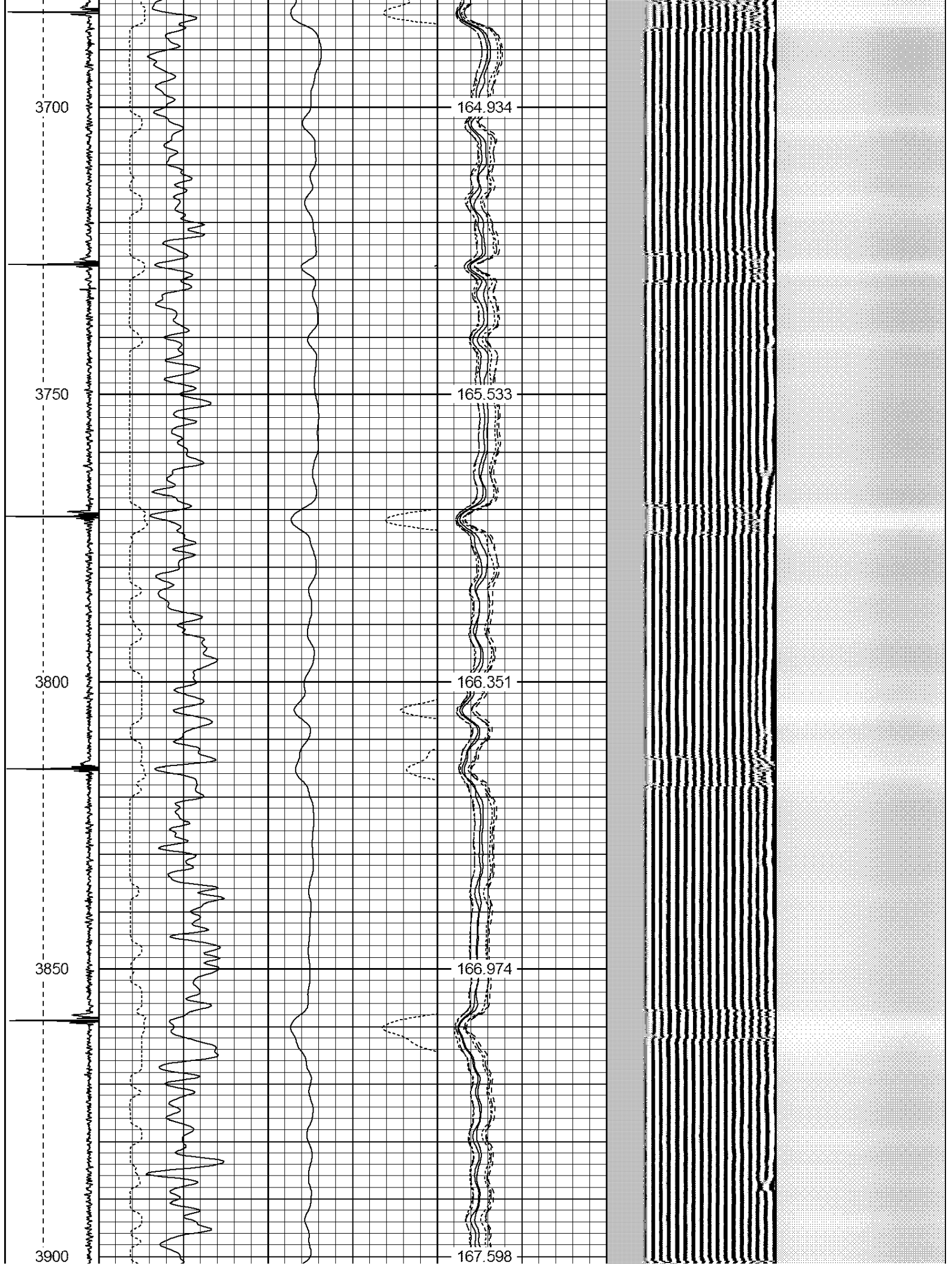




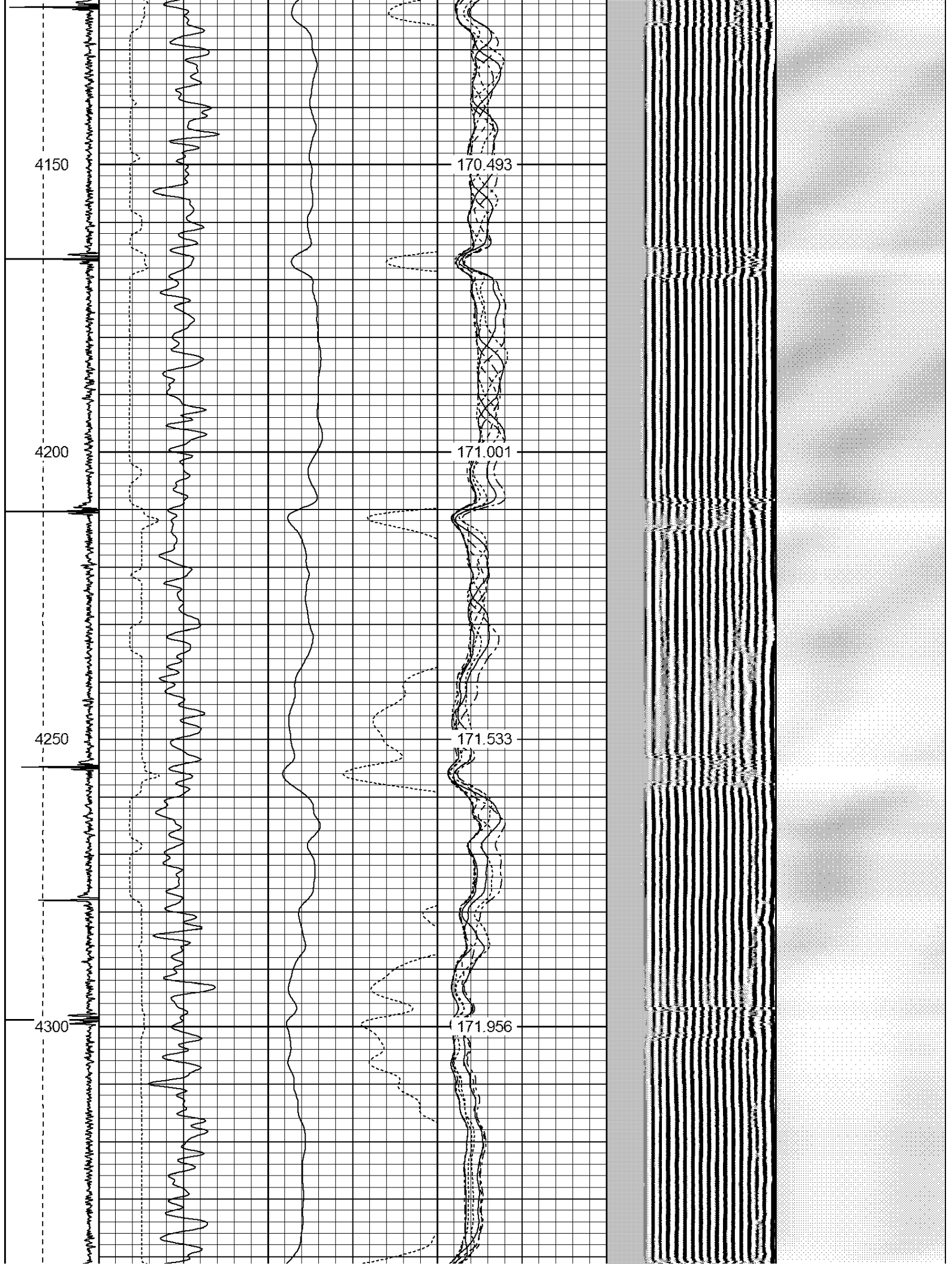


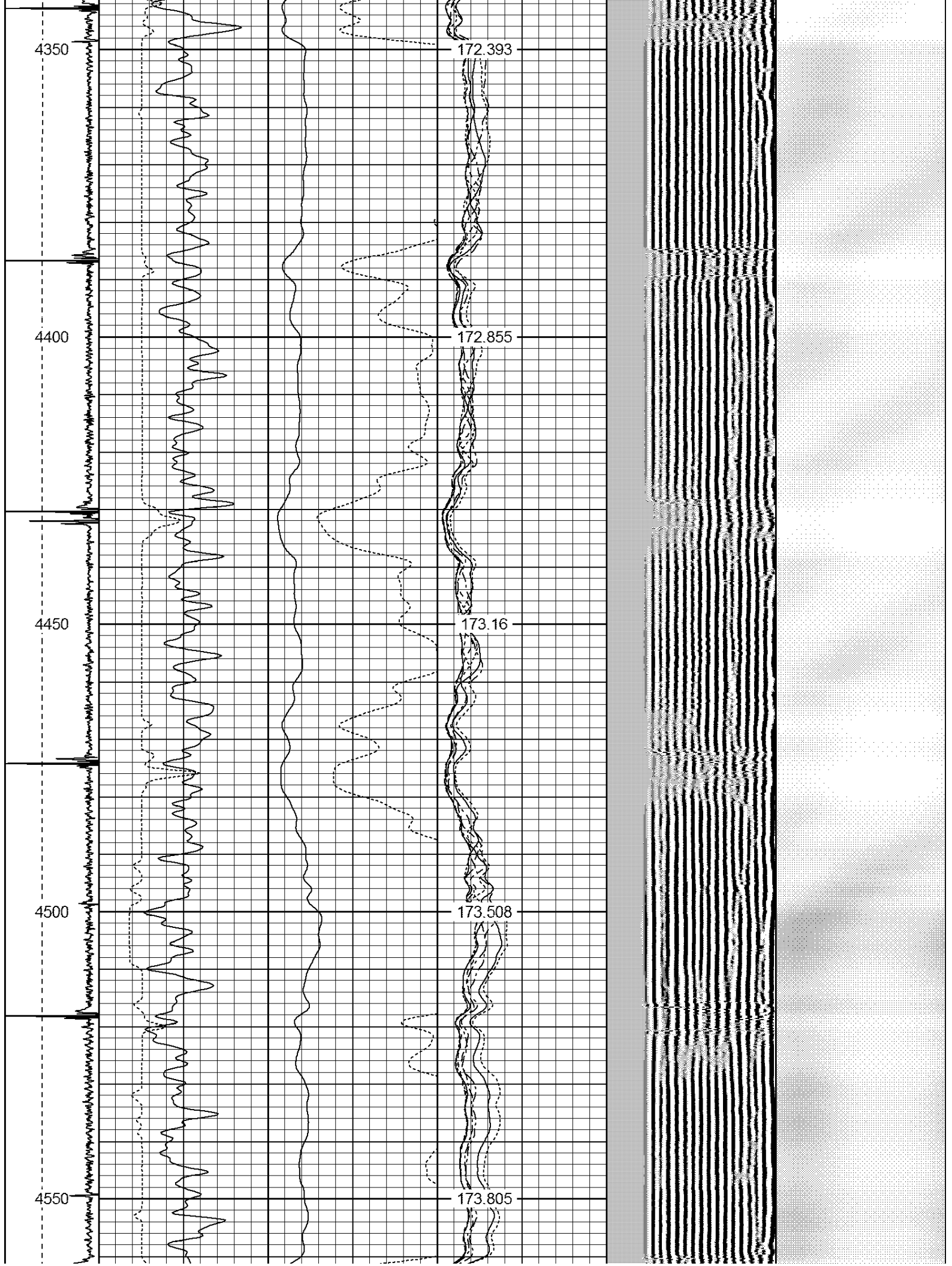


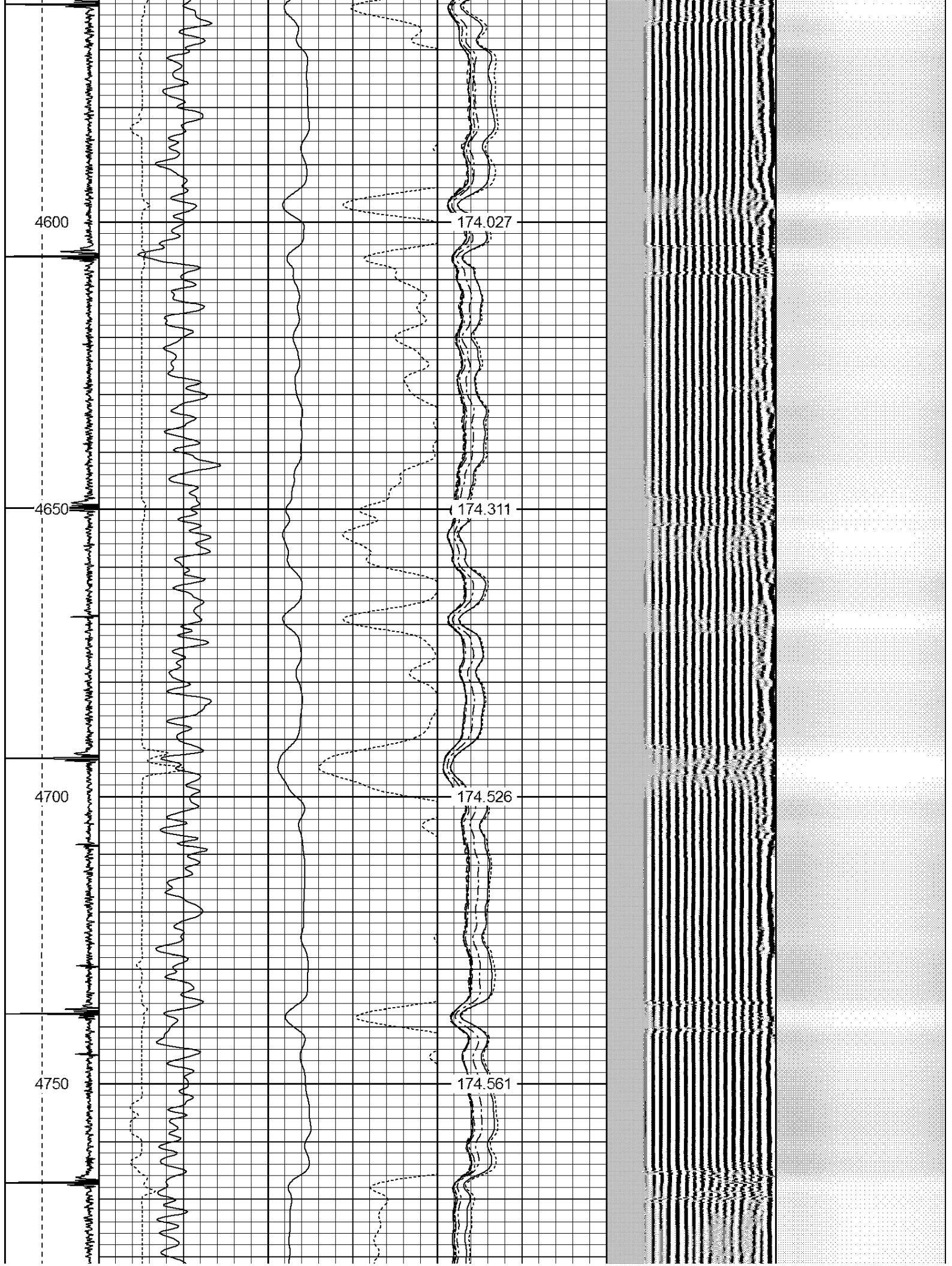


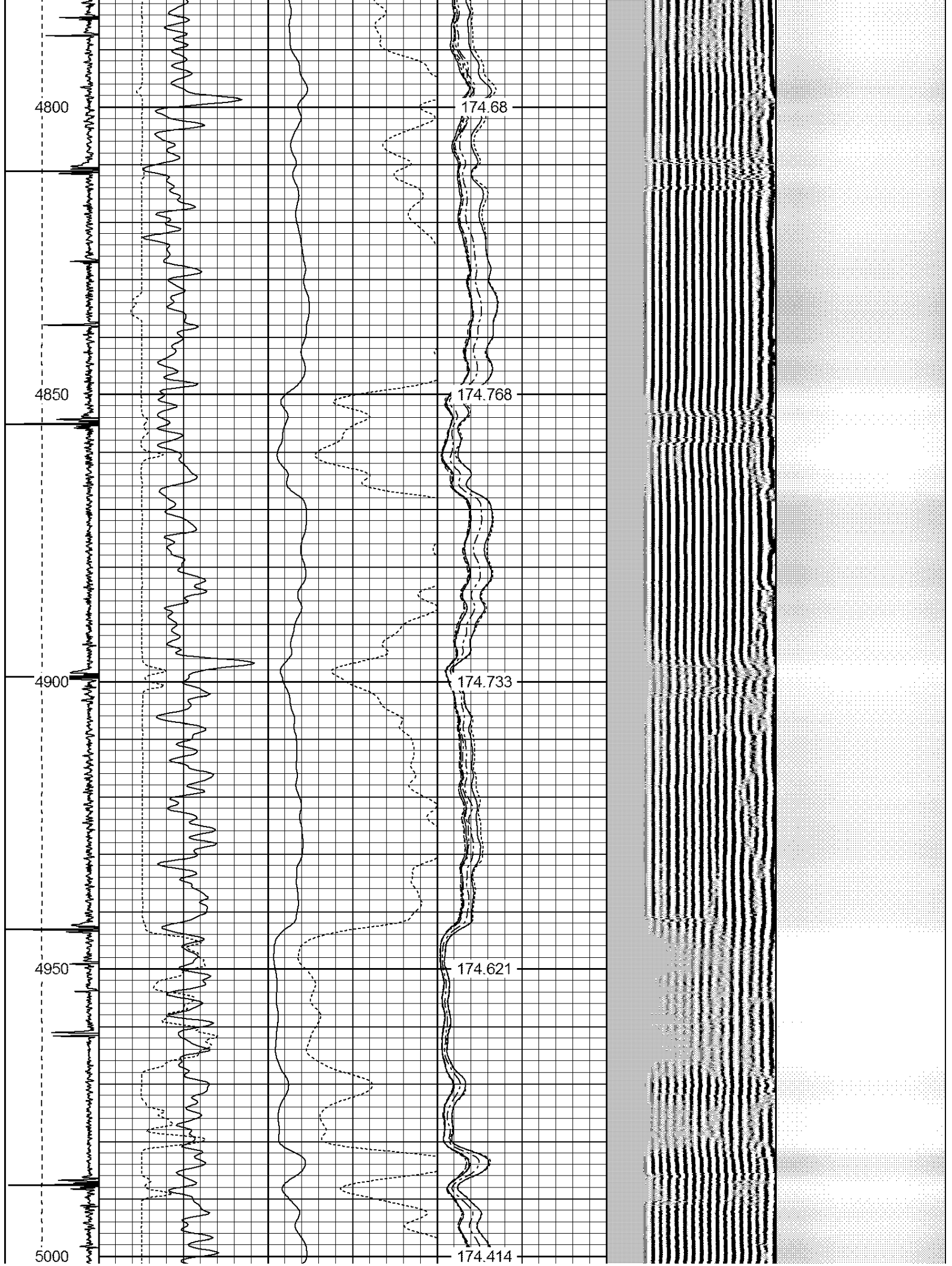


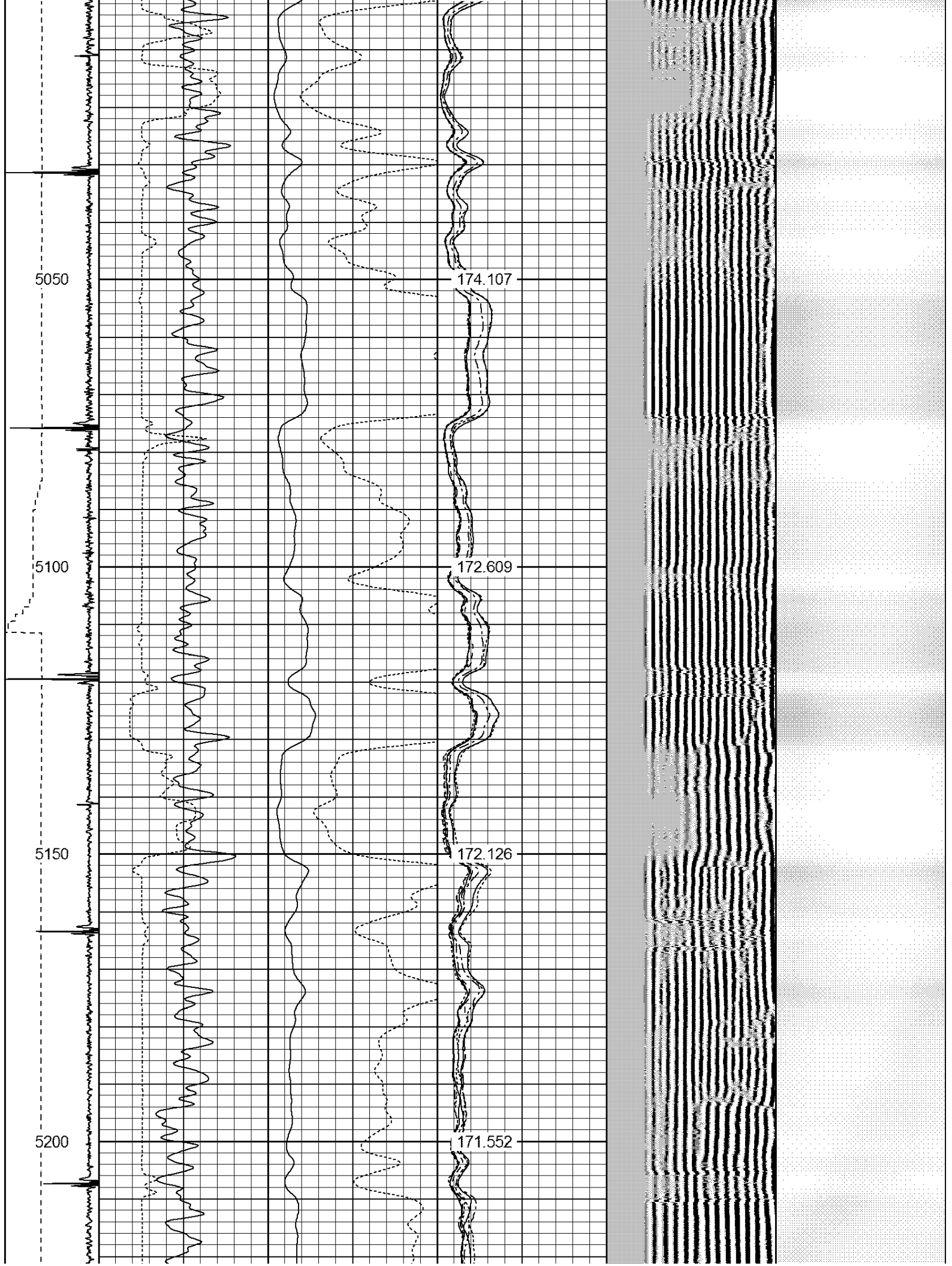


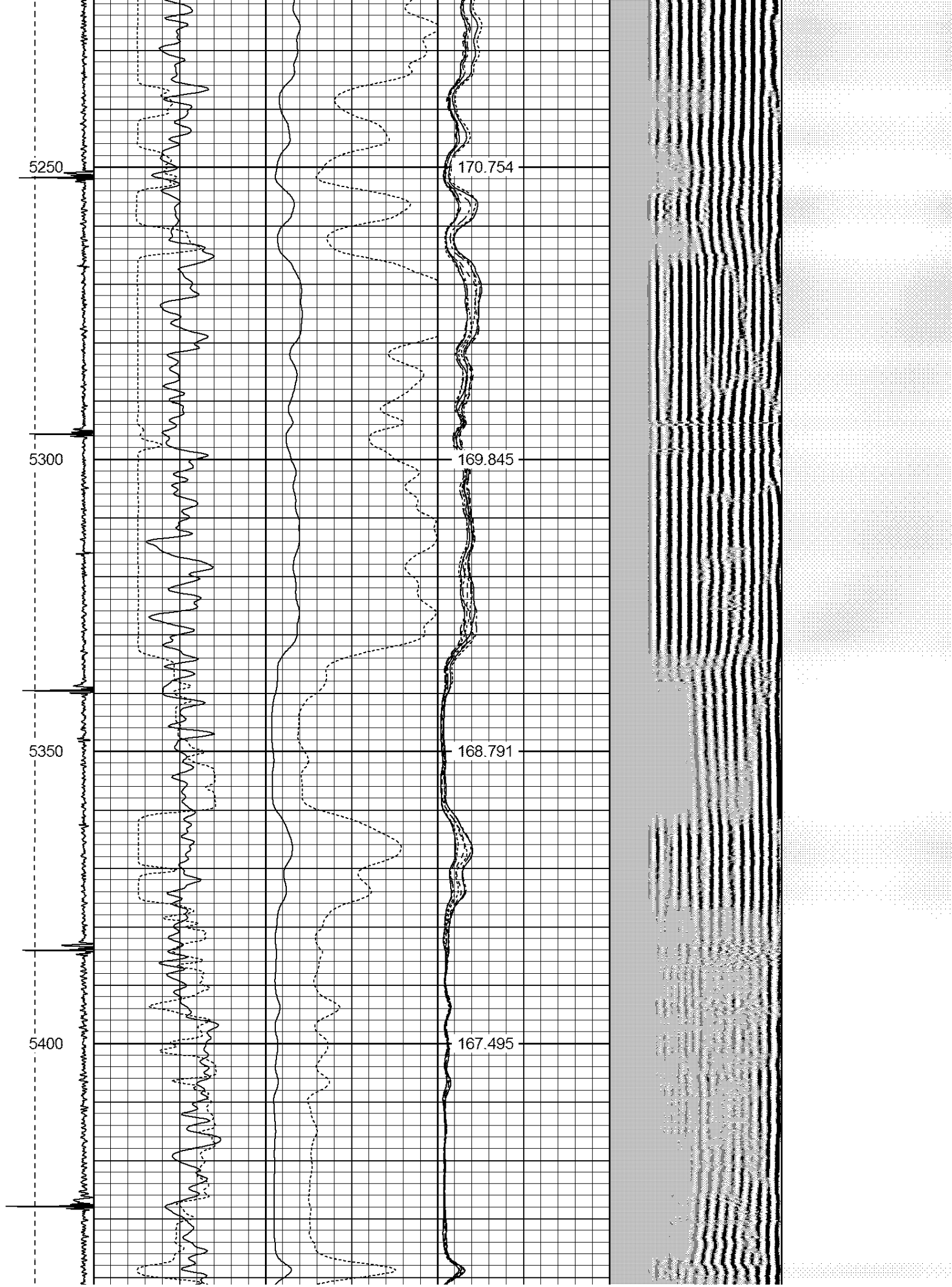


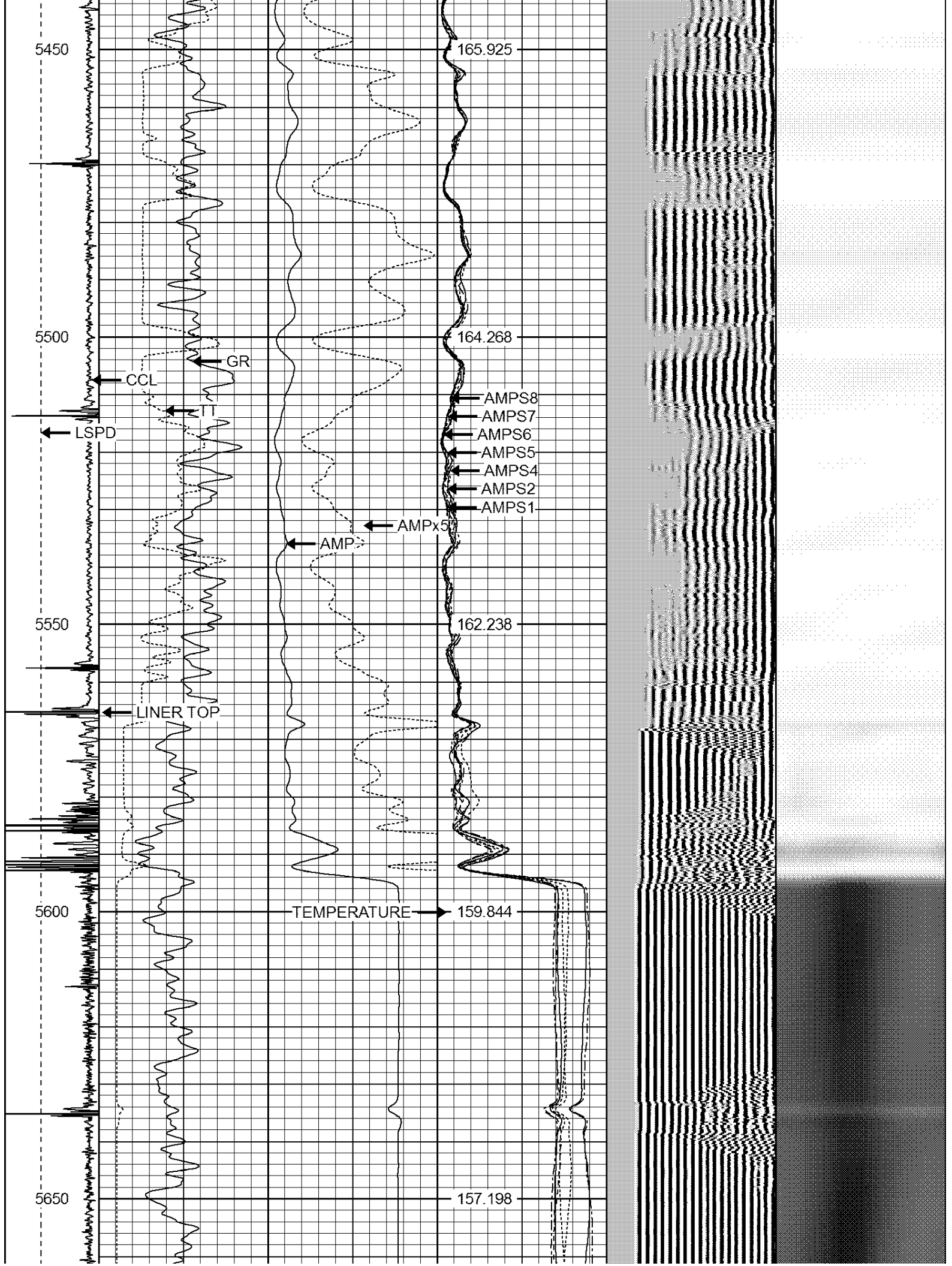


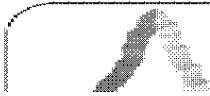
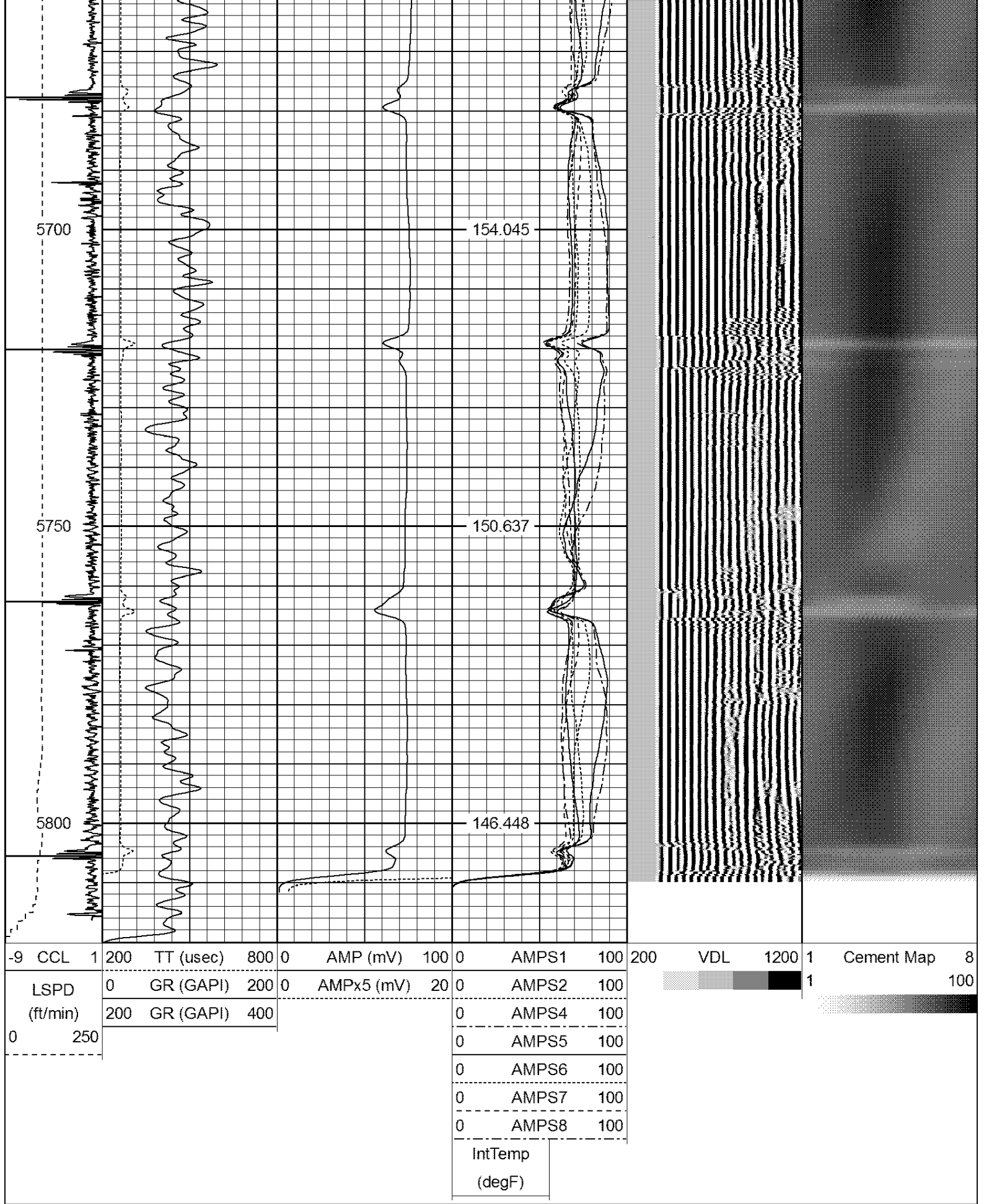










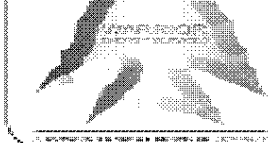


WARRIOR

Company **BILL BARRETT CORPORATION**

Well

FIDUCIAL 6-62-34-4841BH2



WARRIOR
ENERGY SERVICES

Field	WATTENBERG
County	WELD
State	COLORADO