



**Bill Barrett Corporation**

## **Bill Barrett Corp.**

Weld Co., CO

Sec.34-T6N-R62W

Fiducial 06-62-34-3340BH2

Wellbore #1

Survey: Survey #1

## **Standard Survey Report**

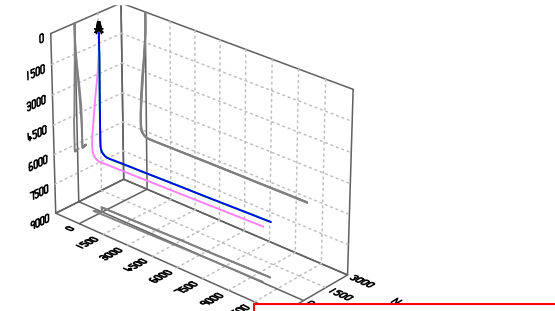
23 August, 2014

# **Archer**



Bill Barrett Corp.  
 Project: Weld Co., CO  
 Site: Sec.34-T6N-R62W  
 Well: Fiducial 06-62-34-3340BH2  
 Wellbore: Wellbore #1  
 Design: Design #2  
 Lat: 40° 26' 34.789 N  
 Long: 104° 19' 2.572 W  
 Pad GL: 4685.00  
 KB: WELL @ 4707.00usft (Original Well Elev)

# Archer



Azimuths to True North  
 Magnetic North: 8.20°  
 Magnetic Field  
 Strength: 52871.8snT  
 Dip Angle: 67.05°  
 Date: 07/30/2014  
 Model: IGRF2010

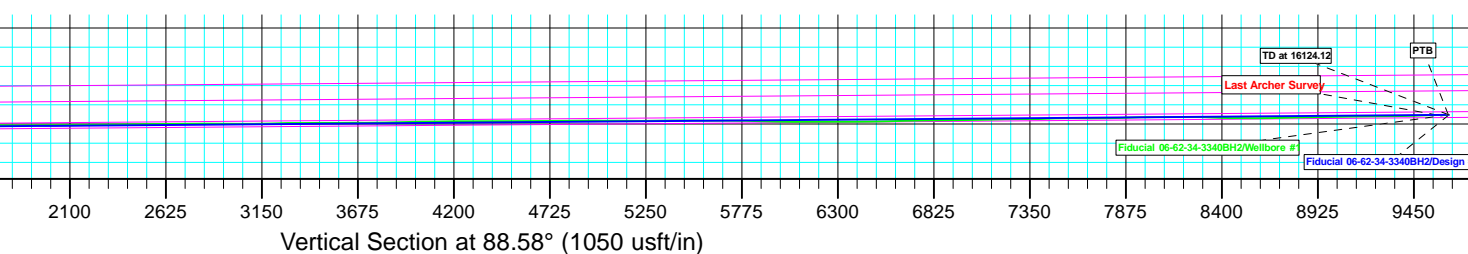
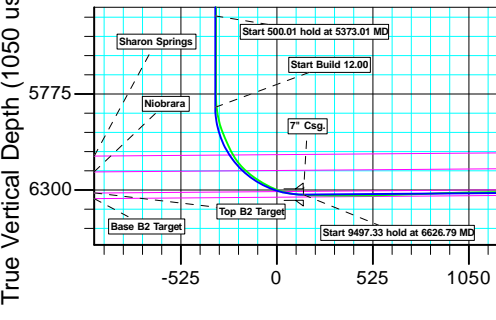
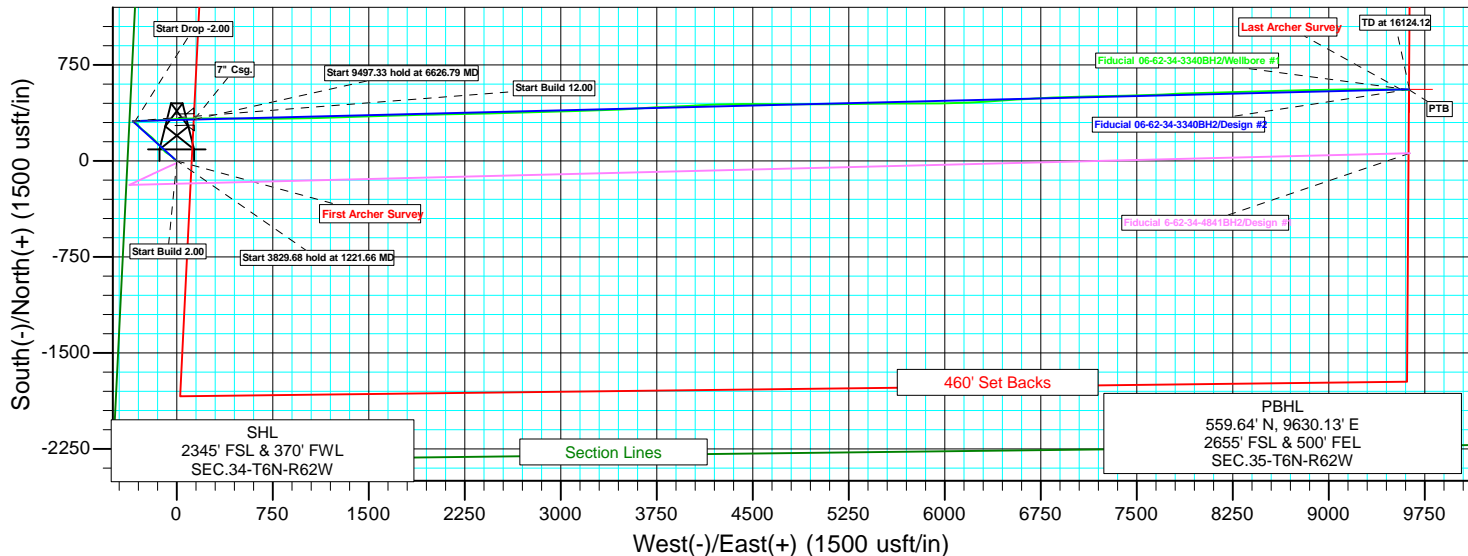
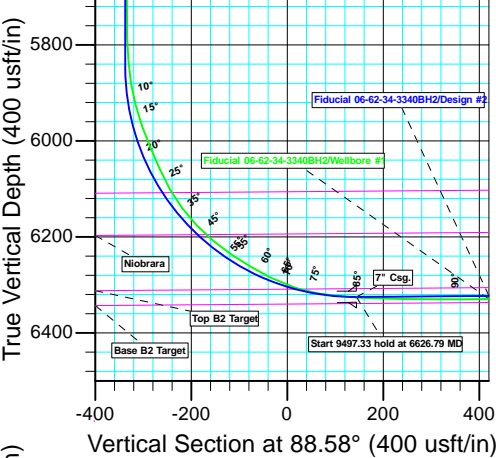
SECTION DETAILS										
MD	Inc	Azi	TVD	+N/-S	+E/-W	Dleg	TFace	VSect	Annotation	
0.00	0.00	0.00	0.00	0.00	0.00	0.00	0.00	0.00		
900.00	0.00	0.00	900.00	0.00	0.00	0.00	0.00	0.00	Start Build 2.00	
1221.66	6.43	312.12	1220.99	12.10	-13.38	2.00	312.12	-13.08	Start 3829.68 hold at 1221.66 MD	
5051.34	6.43	312.12	5026.55	299.86	-331.69	0.00	0.00	-324.16	Start Drop -2.00	
5373.01	0.00	0.00	5347.54	311.96	-345.07	2.00	180.00	-337.23	Start 500.01 hold at 5373.01 MD	
5873.02	0.00	0.00	5847.55	311.96	-345.07	0.00	0.00	-337.23	Start Build 12.00	
6626.79	90.45	88.58	6325.00	323.90	136.02	12.00	88.58	144.00	Start 9497.33 hold at 6626.79 MD	
16124.12	90.45	88.58	6250.00	559.64	9630.13	0.00	0.00	9641.04	TD at 16124.12	

WELL DETAILS: Fiducial 06-62-34-3340BH2							
+N/-S	+E/-W	Northing	Ground Level:	4685.00	Latitude	Longitude	Slot
0.00	0.00	1406419.048	Easting	3329152.981	40° 26' 34.789 N	104° 19' 2.572 W	

**PROJECT DETAILS: Weld Co., CO**  
 Geodetic System: US State Plane 1983  
 Datum: North American Datum 1983  
 Ellipsoid: GRS 1980  
 Zone: Colorado Northern Zone  
 System Datum: Mean Sea Level

CASING DETAILS		
TVD	MD	Name
6325.00	6626.79	7" Csg.

WELLBORE TARGET DETAILS (LAT/LONG)						
Name	TVD	+N/-S	+E/-W	Latitude	Longitude	Shape Point
Fiducial 6-62-34-3340BH2 tgt	6250.00	559.64	9630.13	40° 26' 40.301 N	104° 16' 58.012 W	



Plan: Design #2 (Fiducial 06-62-34-3340BH2/Wellbore #1)  
 Created By: Ricky Osburn Date: 6:25, August 23 2014

<b>Company:</b>	Bill Barrett Corp.	<b>Local Co-ordinate Reference:</b>	Well Fiducial 06-62-34-3340BH2
<b>Project:</b>	Weld Co., CO	<b>TVD Reference:</b>	WELL @ 4707.00usft (Original Well Elev)
<b>Site:</b>	Sec.34-T6N-R62W	<b>MD Reference:</b>	WELL @ 4707.00usft (Original Well Elev)
<b>Well:</b>	Fiducial 06-62-34-3340BH2	<b>North Reference:</b>	True
<b>Wellbore:</b>	Wellbore #1	<b>Survey Calculation Method:</b>	Minimum Curvature
<b>Design:</b>	Wellbore #1	<b>Database:</b>	EDMDBBW

<b>Project</b>	Weld Co., CO		
<b>Map System:</b>	US State Plane 1983	<b>System Datum:</b>	Mean Sea Level
<b>Geo Datum:</b>	North American Datum 1983		
<b>Map Zone:</b>	Colorado Northern Zone		

<b>Site</b>	Sec.34-T6N-R62W				
<b>Site Position:</b>		<b>Northing:</b>	1,407,388.563 usft	<b>Latitude:</b>	40° 26' 44.369 N
<b>From:</b>	Lat/Long	<b>Easting:</b>	3,329,153.968 usft	<b>Longitude:</b>	104° 19' 2.392 W
<b>Position Uncertainty:</b>	0.00 usft	<b>Slot Radius:</b>	13-3/16"	<b>Grid Convergence:</b>	0.76 °

<b>Well</b>	Fiducial 06-62-34-3340BH2					
<b>Well Position</b>	<b>+N/-S</b>	0.00 usft	<b>Northing:</b>	1,406,419.048 usft	<b>Latitude:</b>	40° 26' 34.789 N
	<b>+E/-W</b>	0.00 usft	<b>Easting:</b>	3,329,152.981 usft	<b>Longitude:</b>	104° 19' 2.572 W
<b>Position Uncertainty</b>		0.00 usft	<b>Wellhead Elevation:</b>	usft	<b>Ground Level:</b>	4,685.00 usft

<b>Wellbore</b>	Wellbore #1				
<b>Magnetics</b>	<b>Model Name</b>	<b>Sample Date</b>	<b>Declination (°)</b>	<b>Dip Angle (°)</b>	<b>Field Strength (nT)</b>
	IGRF2010	07/30/14	8.20	67.05	52,872

<b>Design</b>	Wellbore #1				
<b>Audit Notes:</b>					
<b>Version:</b>	1.0	<b>Phase:</b>	ACTUAL	<b>Tie On Depth:</b>	0.00
<b>Vertical Section:</b>	<b>Depth From (TVD) (usft)</b>	<b>+N/-S (usft)</b>	<b>+E/-W (usft)</b>	<b>Direction (°)</b>	
	0.00	0.00	0.00	88.58	

<b>Survey Program</b>	<b>Date</b>	08/23/14			
<b>From (usft)</b>	<b>To (usft)</b>	<b>Survey (Wellbore)</b>	<b>Tool Name</b>	<b>Description</b>	
819.00	16,115.00	Survey #1 (Wellbore #1)	MWD	MWD - Standard	

<b>Survey</b>										
<b>Measured Depth (usft)</b>	<b>Inclination (°)</b>	<b>Azimuth (°)</b>	<b>Vertical Depth (usft)</b>	<b>+N/-S (usft)</b>	<b>+E/-W (usft)</b>	<b>Vertical Section (usft)</b>	<b>Dogleg Rate (°/100usft)</b>	<b>Build Rate (°/100usft)</b>	<b>Turn Rate (°/100usft)</b>	
0.00	0.00	0.00	0.00	0.00	0.00	0.00	0.00	0.00	0.00	0.00
50.00	0.00	0.00	50.00	0.00	0.00	0.00	0.00	0.00	0.00	0.00
100.00	0.00	0.00	100.00	0.00	0.00	0.00	0.00	0.00	0.00	0.00
150.00	0.00	0.00	150.00	0.00	0.00	0.00	0.00	0.00	0.00	0.00
200.00	0.00	0.00	200.00	0.00	0.00	0.00	0.00	0.00	0.00	0.00
250.00	0.00	0.00	250.00	0.00	0.00	0.00	0.00	0.00	0.00	0.00
300.00	0.00	0.00	300.00	0.00	0.00	0.00	0.00	0.00	0.00	0.00
350.00	0.00	0.00	350.00	0.00	0.00	0.00	0.00	0.00	0.00	0.00
400.00	0.00	0.00	400.00	0.00	0.00	0.00	0.00	0.00	0.00	0.00
450.00	0.00	0.00	450.00	0.00	0.00	0.00	0.00	0.00	0.00	0.00
500.00	0.00	0.00	500.00	0.00	0.00	0.00	0.00	0.00	0.00	0.00
550.00	0.00	0.00	550.00	0.00	0.00	0.00	0.00	0.00	0.00	0.00
600.00	0.00	0.00	600.00	0.00	0.00	0.00	0.00	0.00	0.00	0.00

<b>Company:</b>	Bill Barrett Corp.	<b>Local Co-ordinate Reference:</b>	Well Fiducial 06-62-34-3340BH2
<b>Project:</b>	Weld Co., CO	<b>TVD Reference:</b>	WELL @ 4707.00usft (Original Well Elev)
<b>Site:</b>	Sec.34-T6N-R62W	<b>MD Reference:</b>	WELL @ 4707.00usft (Original Well Elev)
<b>Well:</b>	Fiducial 06-62-34-3340BH2	<b>North Reference:</b>	True
<b>Wellbore:</b>	Wellbore #1	<b>Survey Calculation Method:</b>	Minimum Curvature
<b>Design:</b>	Wellbore #1	<b>Database:</b>	EDMDBBW

Survey										
Measured Depth (usft)	Inclination (°)	Azimuth (°)	Vertical Depth (usft)	+N/-S (usft)	+E/-W (usft)	Vertical Section (usft)	Dogleg Rate (°/100usft)	Build Rate (°/100usft)	Turn Rate (°/100usft)	
650.00	0.00	0.00	650.00	0.00	0.00	0.00	0.00	0.00	0.00	0.00
700.00	0.00	0.00	700.00	0.00	0.00	0.00	0.00	0.00	0.00	0.00
750.00	0.00	0.00	750.00	0.00	0.00	0.00	0.00	0.00	0.00	0.00
800.00	0.00	0.00	800.00	0.00	0.00	0.00	0.00	0.00	0.00	0.00
<b>First Archer Survey</b>										
819.00	0.00	0.00	819.00	0.00	0.00	0.00	0.00	0.00	0.00	0.00
850.00	0.10	298.30	850.00	0.01	-0.02	-0.02	0.33	0.33	0.00	0.00
900.00	0.22	297.08	900.00	0.08	-0.16	-0.16	0.24	0.24	0.24	-2.44
950.00	0.28	294.88	950.00	0.18	-0.35	-0.35	0.11	0.11	0.11	-4.40
1,000.00	0.68	287.22	1,000.00	0.31	-0.68	-0.68	0.81	0.80	0.80	-15.32
1,050.00	1.33	284.52	1,049.99	0.54	-1.53	-1.51	1.31	1.31	1.31	-5.42
1,100.00	2.04	294.75	1,099.97	1.01	-2.91	-2.88	1.54	1.43	1.43	20.47
1,150.00	2.84	302.28	1,149.92	2.05	-4.76	-4.71	1.71	1.58	1.58	15.05
1,200.00	4.15	309.65	1,199.83	3.84	-7.19	-7.09	2.77	2.63	2.63	14.75
1,250.00	5.57	313.39	1,249.65	6.66	-10.33	-10.16	2.91	2.84	2.84	7.48
1,300.00	7.25	314.07	1,299.34	10.52	-14.36	-14.10	3.37	3.37	3.37	1.36
1,350.00	8.59	314.69	1,348.84	15.42	-19.37	-18.98	2.67	2.66	2.66	1.23
1,400.00	8.91	315.74	1,398.26	20.82	-24.73	-24.20	0.73	0.66	0.66	2.11
1,450.00	8.93	315.25	1,447.64	26.44	-30.17	-29.51	0.15	0.02	0.02	-0.98
1,500.00	8.54	312.72	1,497.06	31.71	-35.63	-34.84	1.09	-0.77	-0.77	-5.06
1,550.00	8.53	310.26	1,546.52	36.59	-41.15	-40.23	0.73	-0.02	-0.02	-4.92
1,600.00	8.75	308.03	1,595.95	41.33	-46.98	-45.94	0.80	0.45	0.45	-4.46
1,650.00	8.87	304.69	1,645.36	45.89	-53.14	-51.99	1.05	0.24	0.24	-6.67
1,700.00	8.99	301.14	1,694.75	50.10	-59.66	-58.40	1.13	0.24	0.24	-7.11
1,750.00	9.11	301.37	1,744.13	54.18	-66.39	-65.03	0.23	0.22	0.22	0.47
1,800.00	9.20	302.41	1,793.49	58.35	-73.17	-71.70	0.38	0.19	0.19	2.08
1,850.00	9.23	307.49	1,842.85	62.93	-79.72	-78.14	1.63	0.07	0.07	10.15
1,900.00	9.28	311.03	1,892.19	68.08	-85.91	-84.20	1.14	0.10	0.10	7.09
1,950.00	9.23	311.14	1,941.54	73.37	-91.98	-90.13	0.11	-0.11	-0.11	0.21
2,000.00	9.22	313.53	1,990.90	78.69	-97.96	-95.98	0.77	-0.03	-0.03	4.79
2,050.00	9.32	319.02	2,040.25	84.51	-103.51	-101.39	1.78	0.21	0.21	10.97
2,100.00	9.37	321.49	2,089.58	90.83	-108.64	-106.36	0.81	0.10	0.10	4.94
2,150.00	9.32	321.28	2,138.92	97.18	-113.71	-111.27	0.13	-0.11	-0.11	-0.42
2,200.00	9.17	320.55	2,188.26	103.43	-118.77	-116.17	0.39	-0.31	-0.31	-1.46
2,250.00	8.95	319.47	2,237.64	109.46	-123.83	-121.08	0.55	-0.43	-0.43	-2.17
2,300.00	8.78	319.08	2,287.04	115.29	-128.87	-125.97	0.36	-0.34	-0.34	-0.77
2,350.00	8.62	318.92	2,336.47	121.00	-133.83	-130.79	0.32	-0.32	-0.32	-0.32
2,400.00	8.46	318.46	2,385.91	126.58	-138.73	-135.55	0.35	-0.32	-0.32	-0.93
2,450.00	8.31	317.92	2,435.38	132.02	-143.59	-140.27	0.35	-0.32	-0.32	-1.07
2,500.00	8.15	316.85	2,484.86	137.28	-148.43	-144.98	0.45	-0.32	-0.32	-2.15
2,550.00	7.98	315.79	2,534.37	142.35	-153.28	-149.70	0.44	-0.32	-0.32	-2.12
2,600.00	7.77	315.63	2,583.90	147.26	-158.06	-154.37	0.42	-0.42	-0.42	-0.31
2,650.00	7.60	315.59	2,633.45	152.02	-162.74	-158.92	0.35	-0.35	-0.35	-0.08
2,700.00	7.60	316.12	2,683.01	156.77	-167.34	-163.41	0.14	0.00	0.00	1.05
2,750.00	7.76	315.69	2,732.57	161.56	-171.93	-167.87	0.34	0.32	0.32	-0.86
2,800.00	8.33	313.06	2,782.08	166.45	-176.93	-172.75	1.37	1.15	1.15	-5.27
2,850.00	8.70	311.78	2,831.52	171.45	-182.48	-178.17	0.82	0.73	0.73	-2.55
2,900.00	8.70	312.25	2,880.94	176.51	-188.09	-183.66	0.14	0.00	0.00	0.95
2,950.00	8.57	312.55	2,930.37	181.60	-193.66	-189.10	0.27	-0.25	-0.25	0.59
3,000.00	8.31	312.65	2,979.83	186.57	-199.06	-194.37	0.53	-0.53	-0.53	0.21
3,050.00	8.14	312.25	3,029.32	191.39	-204.31	-199.51	0.36	-0.35	-0.35	-0.82
3,100.00	8.03	311.44	3,078.82	196.09	-209.55	-204.63	0.31	-0.21	-0.21	-1.60
3,150.00	7.85	310.99	3,128.34	200.64	-214.76	-209.72	0.38	-0.36	-0.36	-0.92
3,200.00	7.64	310.67	3,177.88	205.05	-219.86	-214.71	0.43	-0.42	-0.42	-0.64

<b>Company:</b>	Bill Barrett Corp.	<b>Local Co-ordinate Reference:</b>	Well Fiducial 06-62-34-3340BH2
<b>Project:</b>	Weld Co., CO	<b>TVD Reference:</b>	WELL @ 4707.00usft (Original Well Elev)
<b>Site:</b>	Sec.34-T6N-R62W	<b>MD Reference:</b>	WELL @ 4707.00usft (Original Well Elev)
<b>Well:</b>	Fiducial 06-62-34-3340BH2	<b>North Reference:</b>	True
<b>Wellbore:</b>	Wellbore #1	<b>Survey Calculation Method:</b>	Minimum Curvature
<b>Design:</b>	Wellbore #1	<b>Database:</b>	EDMDBBW

Survey											
Measured Depth (usft)	Inclination (°)	Azimuth (°)	Vertical Depth (usft)	+N/-S (usft)	+E/-W (usft)	Vertical Section (usft)	Dogleg Rate (°/100usft)	Build Rate (°/100usft)	Turn Rate (°/100usft)		
3,250.00	7.43	309.39	3,227.45	209.27	-224.87	-219.62	0.54	-0.42	-2.55		
3,300.00	7.22	307.80	3,277.04	213.25	-229.86	-224.50	0.58	-0.41	-3.18		
3,350.00	7.53	308.24	3,326.63	217.18	-234.90	-229.45	0.62	0.61	0.88		
3,400.00	7.90	308.90	3,376.18	221.36	-240.15	-234.59	0.77	0.75	1.32		
3,450.00	8.11	309.12	3,425.69	225.75	-245.56	-239.89	0.43	0.43	0.44		
3,500.00	8.33	309.25	3,475.18	230.27	-251.10	-245.31	0.44	0.44	0.27		
3,550.00	8.59	308.88	3,524.63	234.90	-256.81	-250.91	0.54	0.53	-0.75		
3,600.00	8.82	308.71	3,574.05	239.65	-262.73	-256.71	0.46	0.46	-0.34		
3,650.00	8.93	309.18	3,623.46	244.50	-268.73	-262.59	0.26	0.21	0.95		
3,700.00	8.95	311.00	3,672.84	249.47	-274.73	-268.46	0.57	0.05	3.64		
3,750.00	8.84	315.78	3,722.24	254.77	-280.34	-273.94	1.49	-0.23	9.56		
3,800.00	8.66	318.52	3,771.66	260.42	-285.48	-278.93	0.90	-0.35	5.48		
3,850.00	8.35	318.57	3,821.11	265.96	-290.37	-283.69	0.63	-0.63	0.10		
3,900.00	7.70	319.38	3,870.61	271.26	-295.02	-288.20	1.32	-1.30	1.62		
3,950.00	6.74	321.21	3,920.21	276.09	-299.04	-292.10	1.97	-1.91	3.65		
4,000.00	6.26	321.10	3,969.90	280.47	-302.51	-295.47	0.96	-0.96	-0.23		
4,050.00	6.05	319.60	4,019.61	284.60	-305.93	-298.78	0.53	-0.42	-2.98		
4,100.00	5.72	311.70	4,069.34	288.33	-309.46	-302.22	1.75	-0.67	-15.81		
4,150.00	5.51	300.63	4,119.11	291.21	-313.39	-306.07	2.20	-0.41	-22.13		
4,200.00	5.32	297.91	4,168.88	293.47	-317.54	-310.17	0.64	-0.38	-5.44		
4,250.00	5.11	296.77	4,218.67	295.56	-321.58	-314.15	0.47	-0.42	-2.28		
4,300.00	4.95	297.32	4,268.48	297.55	-325.48	-318.01	0.34	-0.32	1.10		
4,350.00	4.79	297.95	4,318.30	299.52	-329.25	-321.72	0.34	-0.32	1.25		
4,400.00	4.53	296.60	4,368.14	301.39	-332.85	-325.28	0.57	-0.53	-2.71		
4,450.00	4.22	296.51	4,417.99	303.06	-336.29	-328.68	0.61	-0.61	-0.17		
4,500.00	3.70	306.60	4,467.87	304.84	-339.24	-331.58	1.73	-1.04	20.18		
4,550.00	3.07	316.94	4,517.78	306.88	-341.47	-333.76	1.75	-1.25	20.68		
4,600.00	1.72	323.85	4,567.73	308.46	-342.82	-335.08	2.76	-2.70	13.83		
4,650.00	0.69	345.79	4,617.72	309.32	-343.27	-335.50	2.22	-2.06	43.88		
4,700.00	0.31	54.56	4,667.72	309.69	-343.24	-335.46	1.29	-0.75	137.53		
4,750.00	0.52	100.45	4,717.72	309.68	-342.86	-335.08	0.76	0.42	91.79		
4,800.00	0.58	100.56	4,767.72	309.59	-342.39	-334.61	0.11	0.11	0.21		
4,850.00	0.65	94.58	4,817.72	309.51	-341.87	-334.09	0.20	0.15	-11.95		
4,900.00	0.76	85.78	4,867.71	309.51	-341.25	-333.48	0.31	0.22	-17.60		
4,950.00	0.75	89.83	4,917.71	309.56	-340.57	-332.80	0.11	-0.01	8.09		
5,000.00	0.71	100.41	4,967.70	309.50	-339.94	-332.17	0.29	-0.10	21.15		
5,050.00	0.21	155.02	5,017.70	309.36	-339.55	-331.78	1.22	-0.99	109.24		
5,100.00	0.71	250.59	5,067.70	309.17	-339.80	-332.03	1.52	1.00	191.14		
5,150.00	0.61	249.24	5,117.70	308.97	-340.39	-332.63	0.20	-0.20	-2.71		
5,200.00	0.40	242.12	5,167.69	308.79	-340.79	-333.04	0.43	-0.42	-14.25		
5,250.00	0.40	243.78	5,217.69	308.63	-341.10	-333.35	0.02	-0.01	3.32		
5,300.00	0.39	245.78	5,267.69	308.49	-341.42	-333.67	0.03	-0.02	4.01		
5,350.00	0.28	249.75	5,317.69	308.37	-341.69	-333.94	0.22	-0.21	7.94		
5,400.00	0.17	256.40	5,367.69	308.31	-341.88	-334.14	0.23	-0.23	13.29		
5,450.00	0.01	281.94	5,417.69	308.30	-341.96	-334.22	0.32	-0.32	51.09		
5,500.00	0.09	113.80	5,467.69	308.31	-341.92	-334.17	0.20	0.15	-336.29		
5,550.00	0.27	172.72	5,517.69	308.18	-341.87	-334.12	0.47	0.36	117.84		
5,600.00	0.38	177.67	5,567.69	307.87	-341.85	-334.12	0.23	0.23	9.91		
5,650.00	0.33	172.96	5,617.69	307.56	-341.83	-334.10	0.12	-0.11	-9.41		
5,700.00	0.35	163.97	5,667.69	307.29	-341.77	-334.05	0.12	0.05	-17.99		
5,750.00	0.46	156.02	5,717.69	306.96	-341.65	-333.94	0.24	0.21	-15.90		
5,800.00	0.77	95.95	5,767.68	306.67	-341.32	-333.62	1.34	0.63	-120.13		
5,850.00	3.21	88.57	5,817.66	306.74	-339.83	-332.13	4.90	4.88	-14.77		
5,900.00	8.28	85.25	5,867.41	306.99	-335.07	-327.36	10.16	10.14	-6.64		

<b>Company:</b>	Bill Barrett Corp.	<b>Local Co-ordinate Reference:</b>	Well Fiducial 06-62-34-3340BH2
<b>Project:</b>	Weld Co., CO	<b>TVD Reference:</b>	WELL @ 4707.00usft (Original Well Elev)
<b>Site:</b>	Sec.34-T6N-R62W	<b>MD Reference:</b>	WELL @ 4707.00usft (Original Well Elev)
<b>Well:</b>	Fiducial 06-62-34-3340BH2	<b>North Reference:</b>	True
<b>Wellbore:</b>	Wellbore #1	<b>Survey Calculation Method:</b>	Minimum Curvature
<b>Design:</b>	Wellbore #1	<b>Database:</b>	EDMDBBW

Survey										
Measured Depth (usft)	Inclination (°)	Azimuth (°)	Vertical Depth (usft)	+N/-S (usft)	+E/-W (usft)	Vertical Section (usft)	Dogleg Rate (°/100usft)	Build Rate (°/100usft)	Turn Rate (°/100usft)	
5,950.00	13.57	78.68	5,916.48	308.32	-325.64	-317.90	10.84	10.57	-13.14	
6,000.00	19.02	79.63	5,964.46	311.07	-311.92	-304.11	10.93	10.92	1.91	
6,050.00	22.92	85.72	6,011.11	313.39	-294.10	-286.24	8.93	7.80	12.17	
6,100.00	23.96	93.39	6,056.94	313.56	-274.14	-266.28	6.44	2.08	15.35	
6,150.00	29.55	89.86	6,101.61	312.91	-251.74	-243.91	11.61	11.17	-7.07	
6,200.00	37.05	88.26	6,143.39	313.39	-224.33	-216.50	15.11	15.01	-3.20	
6,250.00	45.00	86.95	6,181.01	314.83	-191.50	-183.64	15.99	15.90	-2.62	
6,300.00	51.30	86.62	6,214.31	316.91	-154.30	-146.39	12.59	12.58	-0.67	
6,350.00	56.47	86.19	6,243.68	319.45	-113.93	-105.98	10.37	10.35	-0.85	
6,400.00	60.74	85.54	6,269.78	322.47	-71.40	-63.39	8.60	8.53	-1.31	
6,450.00	66.50	85.34	6,292.23	326.25	-26.91	-18.82	11.53	11.53	-0.39	
6,500.00	74.15	87.16	6,309.09	329.42	20.01	28.17	15.67	15.30	3.63	
6,550.00	81.44	90.04	6,319.52	330.74	68.85	77.03	15.64	14.59	5.76	
6,600.00	85.15	89.63	6,325.16	330.61	118.53	126.68	7.45	7.41	-0.82	
6,650.00	88.30	88.48	6,328.02	331.44	168.43	176.59	6.70	6.30	-2.29	
6,700.00	88.94	89.04	6,329.05	332.63	218.41	226.58	1.70	1.29	1.11	
6,750.00	89.12	89.91	6,329.90	333.09	268.40	276.57	1.77	0.35	1.74	
6,800.00	89.90	90.30	6,330.33	333.00	318.39	326.55	1.76	1.57	0.79	
6,850.00	90.50	90.69	6,330.09	332.57	368.39	376.52	1.43	1.20	0.78	
6,900.00	90.50	91.07	6,329.66	331.80	418.38	426.48	0.76	0.00	0.76	
6,950.00	90.63	91.30	6,329.20	330.72	468.37	476.42	0.53	0.26	0.46	
7,000.00	90.96	91.30	6,328.50	329.59	518.35	526.36	0.66	0.66	0.00	
7,050.00	91.29	90.76	6,327.52	328.59	568.33	576.30	1.26	0.66	-1.07	
7,100.00	91.62	89.84	6,326.25	328.32	618.31	626.26	1.96	0.65	-1.85	
7,150.00	91.54	89.60	6,324.83	328.65	668.29	676.23	0.50	-0.15	-0.48	
7,200.00	91.33	89.60	6,323.58	329.00	718.28	726.21	0.43	-0.43	0.00	
7,250.00	91.79	89.50	6,322.26	329.38	768.26	776.18	0.95	0.93	-0.20	
7,300.00	92.27	89.38	6,320.46	329.86	818.22	826.15	1.00	0.97	-0.25	
7,350.00	91.95	89.11	6,318.62	330.53	868.18	876.11	0.85	-0.65	-0.54	
7,400.00	91.74	88.93	6,317.05	331.41	918.15	926.08	0.55	-0.42	-0.36	
7,450.00	91.90	89.03	6,315.46	332.30	968.12	976.06	0.39	0.32	0.22	
7,500.00	91.65	88.83	6,313.80	333.15	1,018.08	1,026.03	0.65	-0.51	-0.41	
7,550.00	90.71	88.11	6,312.77	334.49	1,068.05	1,076.01	2.35	-1.87	-1.43	
7,600.00	90.45	87.95	6,312.39	336.31	1,118.02	1,126.01	0.61	-0.51	-0.32	
7,650.00	90.73	88.23	6,311.88	337.97	1,167.99	1,176.01	0.78	0.55	0.55	
7,700.00	90.68	88.34	6,311.23	339.45	1,217.96	1,226.00	0.25	-0.10	0.22	
7,750.00	90.51	88.40	6,310.71	340.87	1,267.94	1,276.00	0.35	-0.33	0.11	
7,800.00	90.70	88.40	6,310.19	342.27	1,317.92	1,325.99	0.37	0.37	0.01	
7,850.00	90.91	88.36	6,309.48	343.67	1,367.89	1,375.99	0.43	0.43	-0.08	
7,900.00	91.08	87.87	6,308.62	345.31	1,417.86	1,425.98	1.03	0.33	-0.98	
7,950.00	91.16	87.64	6,307.61	347.35	1,467.81	1,475.96	0.49	0.17	-0.46	
8,000.00	91.00	88.24	6,306.67	349.15	1,517.76	1,525.95	1.24	-0.33	1.20	
8,050.00	90.49	88.60	6,305.93	350.46	1,567.74	1,575.95	1.25	-1.02	0.72	
8,100.00	89.45	88.60	6,305.96	351.69	1,617.73	1,625.94	2.07	-2.07	0.00	
8,150.00	89.13	88.63	6,306.71	352.90	1,667.71	1,675.94	0.66	-0.66	0.06	
8,200.00	89.35	88.69	6,307.38	354.07	1,717.69	1,725.93	0.46	0.45	0.11	
8,250.00	89.61	88.66	6,307.83	355.22	1,767.67	1,775.93	0.53	0.53	-0.06	
8,300.00	89.89	88.60	6,308.05	356.41	1,817.66	1,825.93	0.56	0.55	-0.11	
8,350.00	89.85	88.39	6,308.16	357.72	1,867.64	1,875.93	0.43	-0.08	-0.42	
8,400.00	89.85	88.21	6,308.31	359.22	1,917.62	1,925.93	0.36	0.01	-0.36	
8,450.00	90.29	88.32	6,308.25	360.73	1,967.59	1,975.93	0.90	0.87	0.22	
8,500.00	90.71	88.38	6,307.81	362.15	2,017.57	2,025.93	0.85	0.84	0.13	
8,550.00	91.09	88.33	6,307.03	363.59	2,067.55	2,075.92	0.77	0.76	-0.11	
8,600.00	91.23	88.32	6,305.96	365.06	2,117.51	2,125.91	0.28	0.28	-0.01	

<b>Company:</b>	Bill Barrett Corp.	<b>Local Co-ordinate Reference:</b>	Well Fiducial 06-62-34-3340BH2
<b>Project:</b>	Weld Co., CO	<b>TVD Reference:</b>	WELL @ 4707.00usft (Original Well Elev)
<b>Site:</b>	Sec.34-T6N-R62W	<b>MD Reference:</b>	WELL @ 4707.00usft (Original Well Elev)
<b>Well:</b>	Fiducial 06-62-34-3340BH2	<b>North Reference:</b>	True
<b>Wellbore:</b>	Wellbore #1	<b>Survey Calculation Method:</b>	Minimum Curvature
<b>Design:</b>	Wellbore #1	<b>Database:</b>	EDMDBBW

Survey										
Measured Depth (usft)	Inclination (°)	Azimuth (°)	Vertical Depth (usft)	+N/-S (usft)	+E/-W (usft)	Vertical Section (usft)	Dogleg Rate (°/100usft)	Build Rate (°/100usft)	Turn Rate (°/100usft)	
8,650.00	91.06	88.38	6,304.96	366.50	2,167.48	2,175.90	0.35	-0.33	0.11	
8,700.00	90.80	88.60	6,304.14	367.84	2,217.46	2,225.89	0.70	-0.53	0.45	
8,750.00	90.47	88.93	6,303.59	368.91	2,267.44	2,275.89	0.93	-0.66	0.66	
8,800.00	90.62	89.04	6,303.16	369.78	2,317.43	2,325.88	0.37	0.30	0.22	
8,850.00	90.89	89.10	6,302.50	370.59	2,367.42	2,375.88	0.55	0.54	0.11	
8,900.00	90.47	89.10	6,301.89	371.37	2,417.41	2,425.87	0.83	-0.83	0.00	
8,950.00	90.19	89.15	6,301.66	372.15	2,467.40	2,475.87	0.58	-0.57	0.10	
9,000.00	90.73	89.48	6,301.26	372.75	2,517.40	2,525.86	1.27	1.09	0.65	
9,050.00	90.94	89.44	6,300.43	373.12	2,567.39	2,575.85	0.43	0.42	-0.08	
9,100.00	90.45	88.61	6,299.83	373.97	2,617.38	2,625.84	1.92	-0.99	-1.65	
9,150.00	90.36	88.31	6,299.56	375.43	2,667.36	2,675.84	0.63	-0.17	-0.61	
9,200.00	90.69	88.53	6,299.10	376.81	2,717.34	2,725.84	0.78	0.65	0.43	
9,250.00	90.29	88.35	6,298.57	378.11	2,767.32	2,775.84	0.87	-0.79	-0.36	
9,300.00	89.52	87.96	6,298.65	379.72	2,817.29	2,825.83	1.72	-1.54	-0.77	
9,350.00	89.63	87.99	6,299.08	381.52	2,867.26	2,875.83	0.22	0.21	0.06	
9,400.00	89.90	88.10	6,299.29	383.22	2,917.23	2,925.83	0.59	0.54	0.22	
9,450.00	89.95	87.88	6,299.35	384.98	2,967.20	2,975.82	0.45	0.11	-0.44	
9,500.00	90.07	87.70	6,299.36	386.92	3,017.16	3,025.82	0.43	0.23	-0.36	
9,550.00	90.45	87.70	6,299.13	388.92	3,067.12	3,075.81	0.77	0.77	0.00	
9,600.00	90.90	87.82	6,298.56	390.91	3,117.07	3,125.80	0.91	0.88	0.23	
9,650.00	91.44	88.14	6,297.54	392.67	3,167.03	3,175.79	1.27	1.09	0.65	
9,700.00	91.33	88.30	6,296.20	394.19	3,216.99	3,225.77	0.38	-0.22	0.31	
9,750.00	90.61	88.30	6,295.35	395.67	3,266.96	3,275.76	1.43	-1.43	0.00	
9,800.00	90.32	88.22	6,294.99	397.18	3,316.94	3,325.76	0.60	-0.58	-0.15	
9,850.00	90.21	88.11	6,294.76	398.78	3,366.91	3,375.76	0.31	-0.22	-0.22	
9,900.00	90.39	87.95	6,294.51	400.49	3,416.88	3,425.76	0.48	0.36	-0.32	
9,950.00	90.59	87.77	6,294.07	402.35	3,466.84	3,475.75	0.54	0.40	-0.37	
10,000.00	90.48	87.28	6,293.60	404.50	3,516.80	3,525.74	1.00	-0.22	-0.98	
10,050.00	90.39	86.80	6,293.23	407.09	3,566.73	3,575.72	0.98	-0.19	-0.96	
10,100.00	90.33	86.36	6,292.91	410.07	3,616.64	3,625.69	0.89	-0.11	-0.88	
10,150.00	90.19	86.30	6,292.66	413.37	3,666.53	3,675.65	0.31	-0.29	-0.13	
10,200.00	89.92	86.79	6,292.61	416.38	3,716.44	3,725.61	1.13	-0.55	0.99	
10,250.00	90.15	87.19	6,292.68	418.99	3,766.37	3,775.59	0.93	0.47	0.80	
10,300.00	90.75	87.52	6,292.28	421.29	3,816.31	3,825.58	1.38	1.21	0.66	
10,350.00	91.23	87.56	6,291.40	423.41	3,866.26	3,875.57	0.96	0.96	0.07	
10,400.00	91.67	87.50	6,290.13	425.56	3,916.20	3,925.54	0.89	0.88	-0.11	
10,450.00	91.39	87.55	6,288.78	427.72	3,966.13	3,975.51	0.58	-0.57	0.10	
10,500.00	91.06	87.53	6,287.71	429.83	4,016.08	4,025.50	0.66	-0.66	-0.05	
10,550.00	90.73	86.93	6,286.93	432.25	4,066.01	4,075.47	1.36	-0.65	-1.20	
10,600.00	90.48	86.64	6,286.42	435.15	4,115.92	4,125.44	0.77	-0.50	-0.59	
10,650.00	90.43	87.13	6,286.02	437.87	4,165.85	4,175.42	0.98	-0.11	0.98	
10,700.00	90.21	87.79	6,285.70	440.13	4,215.80	4,225.41	1.40	-0.43	1.34	
10,750.00	89.79	88.69	6,285.69	441.67	4,265.77	4,275.41	1.98	-0.84	1.79	
10,800.00	89.80	88.99	6,285.96	442.56	4,315.76	4,325.41	0.59	0.01	0.59	
10,850.00	90.17	88.77	6,285.97	443.54	4,365.75	4,375.40	0.86	0.74	-0.43	
10,900.00	90.82	89.10	6,285.57	444.55	4,415.74	4,425.40	1.46	1.30	0.66	
10,950.00	91.57	89.71	6,284.51	445.06	4,465.73	4,475.38	1.93	1.50	1.21	
11,000.00	90.21	90.09	6,283.73	445.15	4,515.72	4,525.36	2.82	-2.72	0.76	
11,050.00	89.18	90.41	6,284.11	444.92	4,565.72	4,575.34	2.17	-2.07	0.64	
11,100.00	89.62	90.46	6,284.64	444.53	4,615.71	4,625.31	0.89	0.88	0.11	
11,150.00	90.18	90.60	6,284.76	444.09	4,665.71	4,675.28	1.16	1.13	0.27	
11,200.00	90.97	90.88	6,284.25	443.44	4,715.70	4,725.24	1.67	1.57	0.56	
11,250.00	91.05	90.81	6,283.24	442.64	4,765.69	4,775.19	0.21	0.16	-0.14	
11,300.00	90.61	90.48	6,282.52	442.08	4,815.68	4,825.15	1.09	-0.87	-0.65	

<b>Company:</b>	Bill Barrett Corp.	<b>Local Co-ordinate Reference:</b>	Well Fiducial 06-62-34-3340BH2
<b>Project:</b>	Weld Co., CO	<b>TVD Reference:</b>	WELL @ 4707.00usft (Original Well Elev)
<b>Site:</b>	Sec.34-T6N-R62W	<b>MD Reference:</b>	WELL @ 4707.00usft (Original Well Elev)
<b>Well:</b>	Fiducial 06-62-34-3340BH2	<b>North Reference:</b>	True
<b>Wellbore:</b>	Wellbore #1	<b>Survey Calculation Method:</b>	Minimum Curvature
<b>Design:</b>	Wellbore #1	<b>Database:</b>	EDMDBBW

Survey										
Measured Depth (usft)	Inclination (°)	Azimuth (°)	Vertical Depth (usft)	+N/-S (usft)	+E/-W (usft)	Vertical Section (usft)	Dogleg Rate (°/100usft)	Build Rate (°/100usft)	Turn Rate (°/100usft)	
11,350.00	90.46	90.36	6,282.08	441.73	4,865.67	4,875.13	0.40	-0.31	-0.25	
11,400.00	90.40	90.30	6,281.71	441.44	4,915.67	4,925.10	0.16	-0.11	-0.11	
11,450.00	89.80	90.05	6,281.60	441.28	4,965.67	4,975.08	1.31	-1.21	-0.51	
11,500.00	89.23	89.77	6,282.05	441.35	5,015.67	5,025.07	1.27	-1.14	-0.57	
11,550.00	89.61	89.33	6,282.56	441.75	5,065.66	5,075.06	1.16	0.76	-0.87	
11,600.00	89.99	89.01	6,282.73	442.51	5,115.66	5,125.05	0.99	0.76	-0.63	
11,650.00	90.38	89.07	6,282.57	443.35	5,165.65	5,175.05	0.78	0.77	0.11	
11,700.00	90.49	89.10	6,282.13	444.14	5,215.64	5,225.05	0.23	0.22	0.06	
11,750.00	90.21	89.10	6,281.82	444.93	5,265.64	5,275.04	0.54	-0.54	0.00	
11,800.00	90.38	88.98	6,281.64	445.74	5,315.63	5,325.04	0.42	0.33	-0.25	
11,850.00	90.86	88.76	6,281.10	446.73	5,365.62	5,375.04	1.06	0.97	-0.43	
11,900.00	90.33	89.37	6,280.45	447.65	5,415.60	5,425.03	1.63	-1.07	1.22	
11,950.00	89.39	90.31	6,280.57	447.79	5,465.60	5,475.02	2.64	-1.87	1.87	
12,000.00	89.50	90.15	6,281.10	447.54	5,515.60	5,524.99	0.37	0.21	-0.31	
12,050.00	89.75	89.93	6,281.44	447.52	5,565.60	5,574.98	0.68	0.51	-0.44	
12,100.00	90.42	90.32	6,281.37	447.41	5,615.60	5,624.96	1.54	1.33	0.78	
12,150.00	90.49	90.48	6,280.78	446.99	5,665.59	5,674.93	0.35	0.15	0.32	
12,200.00	89.04	90.05	6,280.99	446.76	5,715.59	5,724.90	3.03	-2.90	-0.86	
12,250.00	88.29	89.80	6,282.33	446.87	5,765.57	5,774.87	1.58	-1.50	-0.50	
12,300.00	88.51	89.80	6,283.72	447.05	5,815.55	5,824.84	0.43	0.43	0.00	
12,350.00	88.66	89.36	6,284.95	447.34	5,865.53	5,874.82	0.93	0.31	-0.88	
12,400.00	88.77	88.60	6,286.07	448.23	5,915.51	5,924.80	1.54	0.22	-1.52	
12,450.00	89.20	88.32	6,286.99	449.63	5,965.48	5,974.79	1.03	0.86	-0.56	
12,500.00	89.75	88.21	6,287.44	451.14	6,015.46	6,024.79	1.11	1.09	-0.22	
12,550.00	89.90	88.25	6,287.58	452.69	6,065.43	6,074.79	0.32	0.31	0.08	
12,600.00	89.98	88.30	6,287.62	454.19	6,115.41	6,124.79	0.19	0.16	0.10	
12,650.00	89.82	88.30	6,287.71	455.68	6,165.39	6,174.79	0.33	-0.33	0.00	
12,700.00	89.78	87.94	6,287.93	457.21	6,215.37	6,224.79	0.72	-0.07	-0.72	
12,750.00	90.05	86.75	6,288.00	459.52	6,265.31	6,274.77	2.45	0.54	-2.39	
12,800.00	90.28	86.08	6,287.84	462.78	6,315.20	6,324.73	1.41	0.44	-1.34	
12,850.00	90.44	86.02	6,287.53	466.22	6,365.08	6,374.68	0.34	0.33	-0.11	
12,900.00	90.53	86.20	6,287.10	469.65	6,414.97	6,424.63	0.41	0.19	0.36	
12,950.00	90.59	86.53	6,286.61	472.82	6,464.86	6,474.59	0.66	0.11	0.65	
13,000.00	90.81	86.43	6,286.01	475.85	6,514.77	6,524.56	0.49	0.45	-0.20	
13,050.00	91.09	86.21	6,285.18	479.06	6,564.66	6,574.51	0.70	0.55	-0.44	
13,100.00	91.52	86.36	6,284.05	482.31	6,614.54	6,624.46	0.92	0.87	0.30	
13,150.00	91.84	86.59	6,282.53	485.41	6,664.42	6,674.40	0.79	0.63	0.47	
13,200.00	91.40	87.24	6,281.12	488.10	6,714.33	6,724.36	1.57	-0.87	1.30	
13,250.00	90.87	87.70	6,280.10	490.24	6,764.27	6,774.34	1.41	-1.08	0.91	
13,300.00	90.09	87.70	6,279.68	492.25	6,814.23	6,824.33	1.56	-1.56	0.00	
13,350.00	90.05	87.62	6,279.78	494.27	6,864.19	6,874.33	0.18	-0.07	-0.16	
13,400.00	90.76	87.46	6,279.42	496.42	6,914.14	6,924.32	1.45	1.41	-0.33	
13,450.00	91.18	87.40	6,278.53	498.68	6,964.08	6,974.30	0.85	0.84	-0.11	
13,500.00	91.46	87.40	6,277.38	500.95	7,014.01	7,024.27	0.55	0.55	0.00	
13,550.00	91.04	88.28	6,276.25	502.89	7,063.96	7,074.26	1.94	-0.83	1.75	
13,600.00	90.51	89.30	6,275.58	503.94	7,113.95	7,124.25	2.30	-1.06	2.04	
13,650.00	90.94	89.19	6,274.95	504.60	7,163.94	7,174.24	0.90	0.87	-0.22	
13,700.00	91.18	89.09	6,273.95	505.36	7,213.92	7,224.23	0.52	0.48	-0.20	
13,750.00	90.53	89.04	6,273.20	506.17	7,263.91	7,274.22	1.31	-1.30	-0.11	
13,800.00	90.23	88.89	6,272.97	507.05	7,313.90	7,324.22	0.67	-0.60	-0.30	
13,850.00	90.62	88.56	6,272.60	508.17	7,363.89	7,374.22	1.01	0.77	-0.66	
13,900.00	91.11	88.46	6,271.87	509.52	7,413.86	7,424.21	1.02	1.00	-0.20	
13,950.00	91.72	88.57	6,270.64	510.81	7,463.83	7,474.20	1.23	1.21	0.22	
14,000.00	90.94	88.25	6,269.29	512.15	7,513.79	7,524.18	1.68	-1.56	-0.63	

<b>Company:</b>	Bill Barrett Corp.	<b>Local Co-ordinate Reference:</b>	Well Fiducial 06-62-34-3340BH2
<b>Project:</b>	Weld Co., CO	<b>TVD Reference:</b>	WELL @ 4707.00usft (Original Well Elev)
<b>Site:</b>	Sec.34-T6N-R62W	<b>MD Reference:</b>	WELL @ 4707.00usft (Original Well Elev)
<b>Well:</b>	Fiducial 06-62-34-3340BH2	<b>North Reference:</b>	True
<b>Wellbore:</b>	Wellbore #1	<b>Survey Calculation Method:</b>	Minimum Curvature
<b>Design:</b>	Wellbore #1	<b>Database:</b>	EDMDBBW

Survey										
Measured Depth (usft)	Inclination (°)	Azimuth (°)	Vertical Depth (usft)	+N/-S (usft)	+E/-W (usft)	Vertical Section (usft)	Dogleg Rate (°/100usft)	Build Rate (°/100usft)	Turn Rate (°/100usft)	
14,050.00	89.56	87.76	6,269.08	513.88	7,563.76	7,574.17	2.92	-2.75	-0.99	
14,100.00	89.93	87.75	6,269.39	515.87	7,613.72	7,624.17	0.72	0.72	-0.02	
14,150.00	90.51	87.79	6,269.19	517.81	7,663.68	7,674.16	1.16	1.16	0.09	
14,200.00	90.67	87.63	6,268.68	519.81	7,713.64	7,724.15	0.47	0.33	-0.33	
14,250.00	90.91	87.42	6,268.01	521.95	7,763.59	7,774.14	0.64	0.47	-0.43	
14,300.00	91.40	87.03	6,267.00	524.37	7,813.52	7,824.12	1.25	0.99	-0.77	
14,350.00	91.61	87.15	6,265.61	527.04	7,863.43	7,874.08	0.48	0.42	0.23	
14,400.00	91.40	88.02	6,264.30	529.15	7,913.37	7,924.05	1.79	-0.43	1.74	
14,450.00	91.15	88.46	6,263.19	530.61	7,963.33	7,974.04	1.02	-0.50	0.89	
14,500.00	90.87	88.57	6,262.31	531.90	8,013.31	8,024.03	0.59	-0.55	0.22	
14,550.00	90.27	88.80	6,261.77	533.06	8,063.29	8,074.03	1.29	-1.20	0.46	
14,600.00	89.56	89.08	6,261.85	533.98	8,113.28	8,124.03	1.53	-1.43	0.55	
14,650.00	89.96	89.10	6,262.09	534.77	8,163.28	8,174.02	0.81	0.81	0.04	
14,700.00	90.23	89.05	6,261.92	535.56	8,213.27	8,224.02	0.55	0.54	-0.10	
14,750.00	88.82	88.61	6,262.34	536.58	8,263.26	8,274.02	2.96	-2.83	-0.87	
14,800.00	87.94	88.28	6,263.92	537.96	8,313.21	8,323.99	1.88	-1.76	-0.66	
14,850.00	88.43	88.23	6,265.51	539.48	8,363.16	8,373.96	1.00	0.99	-0.11	
14,900.00	88.87	88.07	6,266.67	541.07	8,413.12	8,423.95	0.94	0.88	-0.31	
14,950.00	89.26	87.80	6,267.48	542.87	8,463.09	8,473.94	0.93	0.76	-0.54	
15,000.00	89.53	87.70	6,267.99	544.86	8,513.04	8,523.93	0.60	0.56	-0.21	
15,050.00	89.75	87.70	6,268.31	546.87	8,563.00	8,573.92	0.43	0.43	0.00	
15,100.00	90.29	88.32	6,268.32	548.66	8,612.97	8,623.92	1.64	1.08	1.23	
15,150.00	90.92	89.11	6,267.79	549.79	8,662.95	8,673.92	2.02	1.26	1.58	
15,200.00	91.37	89.06	6,266.77	550.55	8,712.94	8,723.90	0.91	0.90	-0.09	
15,250.00	91.80	88.90	6,265.39	551.44	8,762.91	8,773.88	0.91	0.85	-0.32	
15,300.00	91.75	89.01	6,263.84	552.35	8,812.88	8,823.86	0.24	-0.11	0.21	
15,350.00	91.61	89.11	6,262.34	553.17	8,862.85	8,873.83	0.33	-0.26	0.20	
15,400.00	90.76	89.16	6,261.30	553.93	8,912.83	8,923.82	1.71	-1.70	0.11	
15,450.00	90.20	89.15	6,260.98	554.65	8,962.82	8,973.82	1.12	-1.12	-0.01	
15,500.00	90.68	88.94	6,260.60	555.48	9,012.82	9,023.81	1.04	0.95	-0.42	
15,550.00	90.85	88.95	6,259.84	556.46	9,062.80	9,073.81	0.34	0.34	0.02	
15,600.00	90.37	89.43	6,259.31	557.17	9,112.79	9,123.80	1.34	-0.95	0.95	
15,650.00	90.25	89.66	6,259.12	557.51	9,162.79	9,173.79	0.52	-0.24	0.46	
15,700.00	90.62	89.55	6,258.74	557.85	9,212.79	9,223.78	0.76	0.73	-0.21	
15,750.00	90.80	89.53	6,258.08	558.27	9,262.78	9,273.77	0.37	0.36	-0.05	
15,800.00	90.80	89.58	6,257.39	558.66	9,312.78	9,323.76	0.11	0.00	0.11	
15,850.00	91.19	89.93	6,256.58	558.92	9,362.77	9,373.74	1.05	0.78	0.69	
15,900.00	91.82	90.45	6,255.27	558.76	9,412.75	9,423.71	1.64	1.26	1.05	
15,950.00	91.66	90.75	6,253.65	558.21	9,462.72	9,473.65	0.69	-0.34	0.60	
16,000.00	91.18	90.97	6,252.42	557.46	9,512.70	9,523.59	1.05	-0.96	0.43	
16,050.00	91.28	90.73	6,251.38	556.69	9,562.68	9,573.54	0.52	0.21	-0.48	
<b>Last Archer Survey</b>										
16,054.00	91.30	90.70	6,251.29	556.64	9,566.68	9,577.54	0.78	0.43	-0.65	
<b>Fiducial 6-62-34-3340BH2 tgt</b>										
16,100.00	91.30	90.70	6,250.25	556.08	9,612.67	9,623.50	0.00	0.00	0.00	

<b>Company:</b>	Bill Barrett Corp.	<b>Local Co-ordinate Reference:</b>	Well Fiducial 06-62-34-3340BH2
<b>Project:</b>	Weld Co., CO	<b>TVD Reference:</b>	WELL @ 4707.00usft (Original Well Elev)
<b>Site:</b>	Sec.34-T6N-R62W	<b>MD Reference:</b>	WELL @ 4707.00usft (Original Well Elev)
<b>Well:</b>	Fiducial 06-62-34-3340BH2	<b>North Reference:</b>	True
<b>Wellbore:</b>	Wellbore #1	<b>Survey Calculation Method:</b>	Minimum Curvature
<b>Design:</b>	Wellbore #1	<b>Database:</b>	EDMDBBW

Survey Annotations				
Measured Depth (usft)	Vertical Depth (usft)	Local Coordinates		Comment
		+N/-S (usft)	+E/-W (usft)	
819.00	819.00	0.00	0.00	First Archer Survey
16,054.00	6,251.29	556.64	9,566.68	Last Archer Survey
16,115.00	6,249.91	555.89	9,627.66	PTB

Checked By: \_\_\_\_\_ Approved By: \_\_\_\_\_ Date: \_\_\_\_\_