

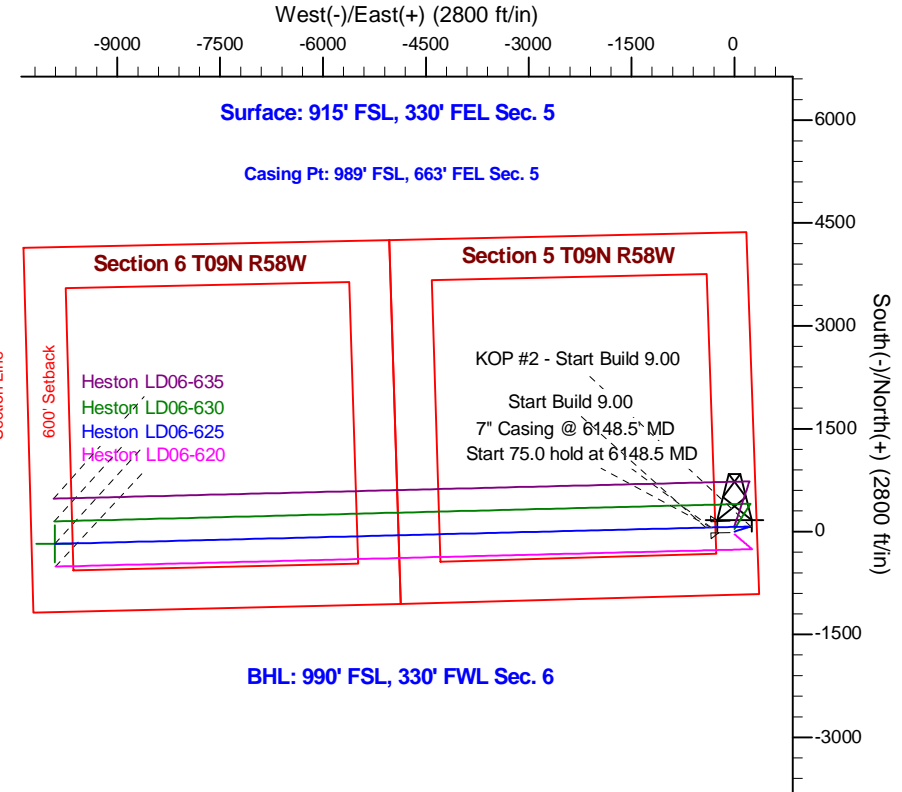
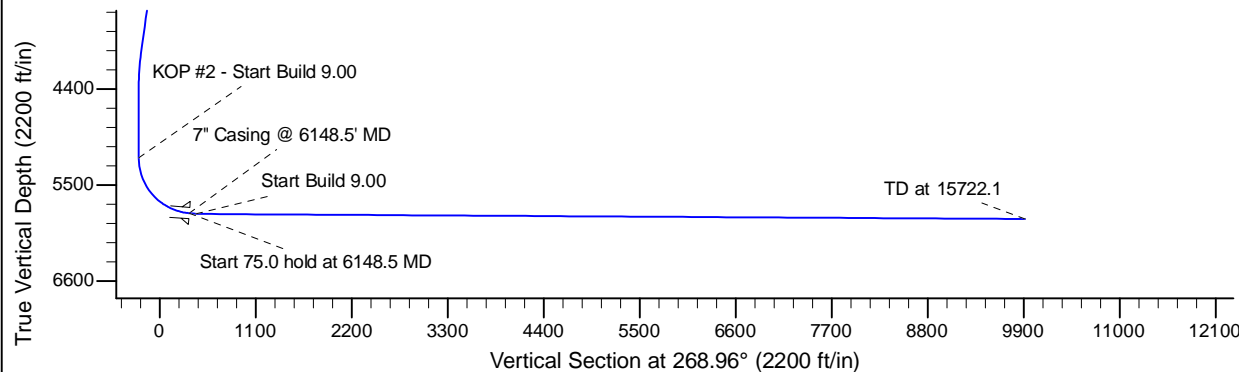
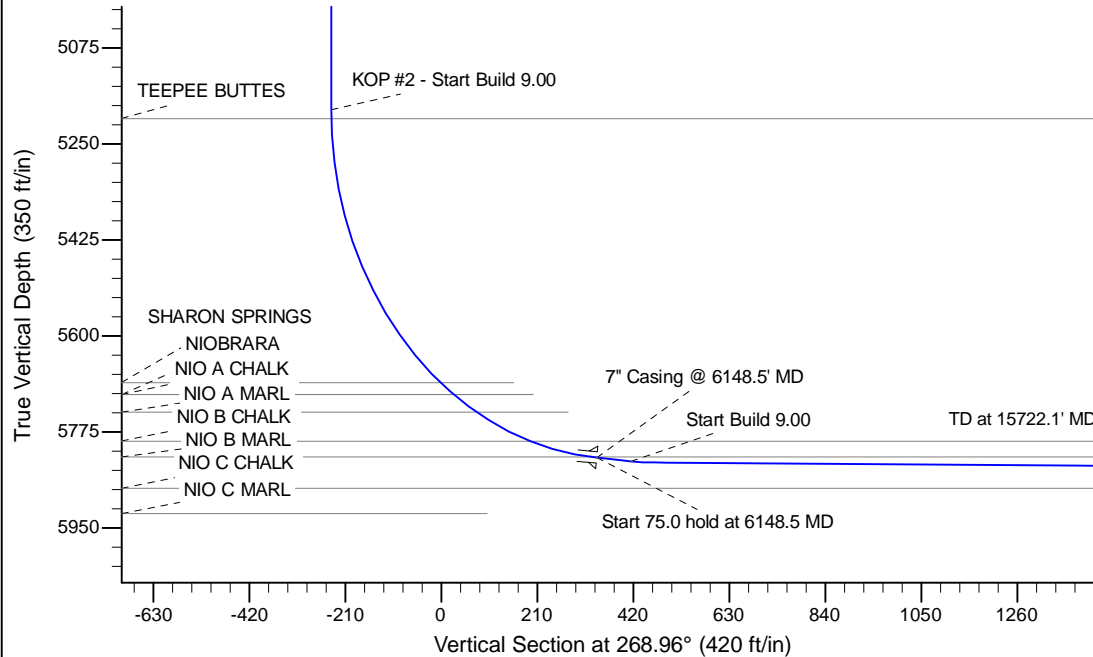
Project: Wattenberg Field
 Site: LD (Sec.5-T09N-R58W) Weld County, CO
 Well: Heston LD06-625
 Wellbore: Original Drilling
 Design: APD - Rev 0

Northern Region Drilling - Working

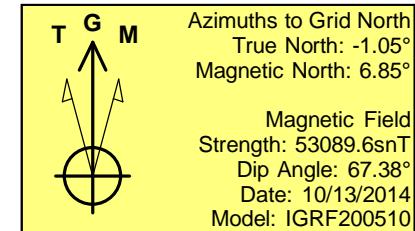
Geodetic System: US State Plane 1983
 Datum: North American Datum 1983
 Ellipsoid: GRS 1980
 Zone: Colorado Northern Zone
 System Datum: Mean Sea Level

SECTION DETAILS

Sec	MD	Inc	Azi	TVD	+N/-S	+E/-W	Dleg	TFace	Vsect	Target
1	0.0	0.00	0.00	0.0	0.0	0.0	0.00	0.00	0.0	
2	2200.0	0.00	0.00	2200.0	0.0	0.0	0.00	0.00	0.0	
3	2599.9	8.00	72.65	2598.6	8.3	26.6	2.00	72.65	-26.7	
4	4006.3	8.00	72.65	3991.4	66.7	213.4	0.00	0.00	-214.6	
5	4406.3	0.00	0.00	4390.0	75.0	240.0	2.00	180.00	-241.3	
6	5204.0	0.00	0.00	5187.7	75.0	240.0	0.00	0.00	-241.3	
7	6148.5	85.00	268.57	5821.9	60.5	-341.0	9.00	268.57	339.8	
8	6223.5	85.00	268.57	5828.5	58.6	-415.6	0.00	0.00	414.5	
9	6275.1	89.65	268.57	5830.9	57.3	-467.2	9.00	0.00	466.1	
10	15722.1	89.65	268.57	5888.6	-179.1	-9911.1	0.00	0.00	9912.7	Heston LD06-625 BHL 990'FSL, 330'FWL



BHL: 990' FSL, 330' FWL Sec. 6



WELL DETAILS: Heston LD06-625

Ground Level: 4801.0					
0.0	0.0	Northing	Easting	Latitude	Longitude
		1529512.52	3448606.24	40.775650	-103.880200

Plan: APD - Rev 0 (Heston LD06-625/Original Drilling)

Created By: Shailey Jewell Date: 14:17, October 13 2014

OK to submit with 2A as per Noble Drilling
 10/13/2014 2:39