

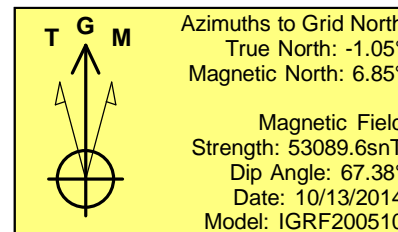
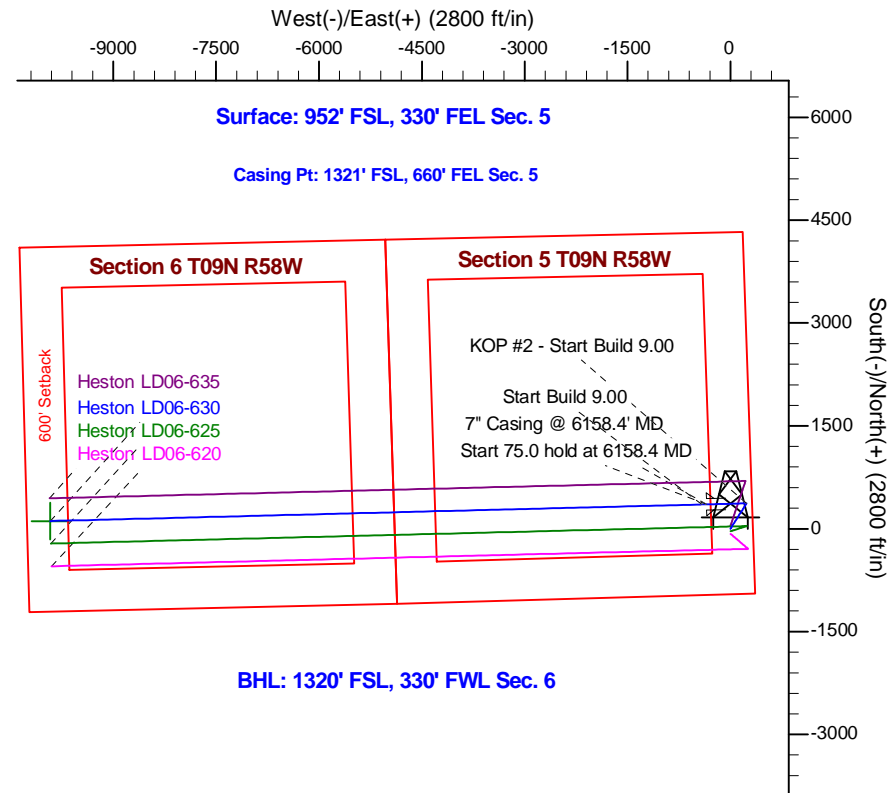
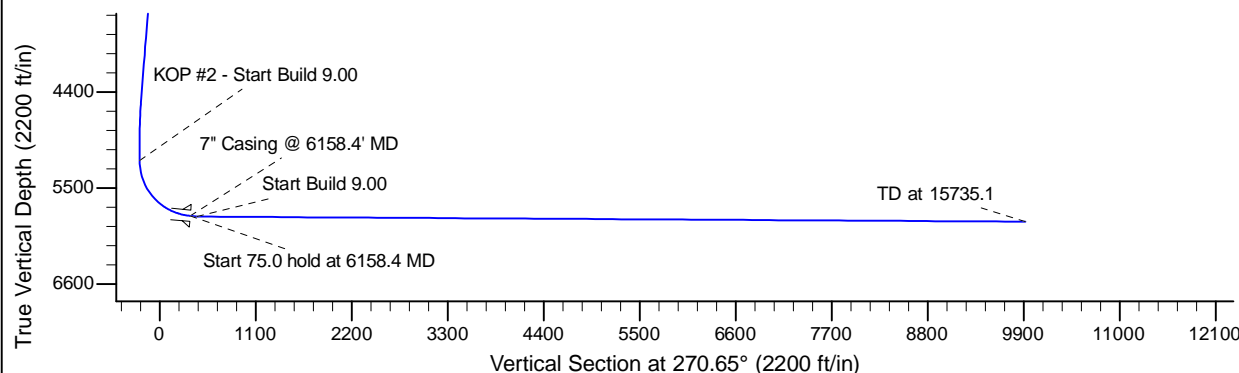
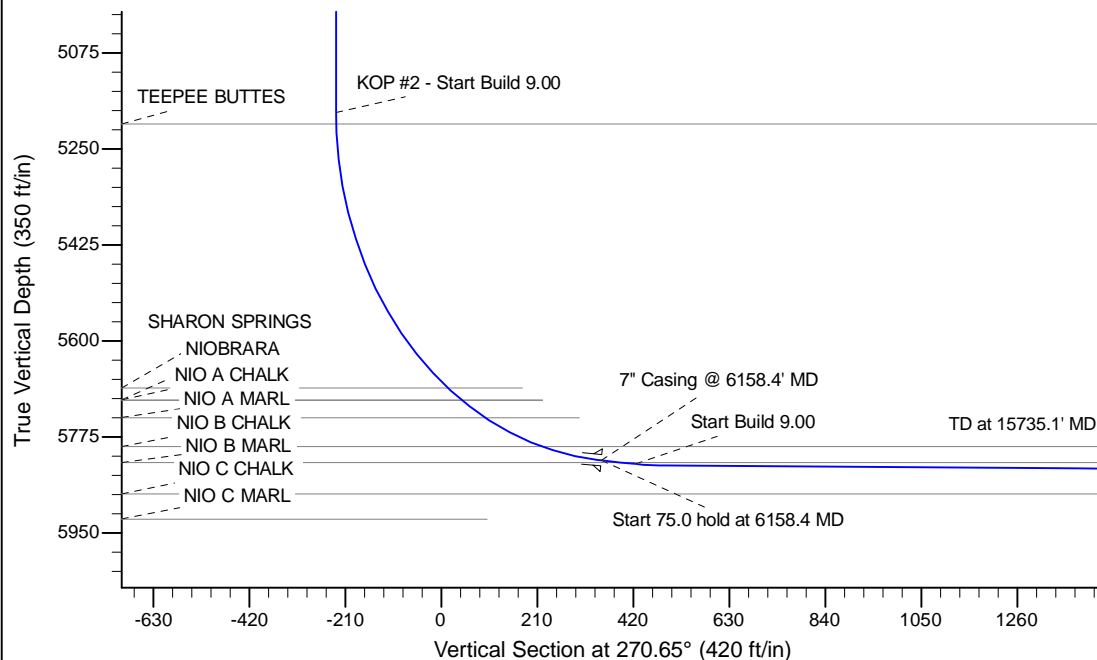
Project: Wattenberg Field  
 Site: LD (Sec.5-T09N-R58W) Weld County, CO  
 Well: Heston LD06-630  
 Wellbore: Original Drilling  
 Design: APD - Rev 0

# Northern Region Drilling - Working

Geodetic System: US State Plane 1983  
 Datum: North American Datum 1983  
 Ellipsoid: GRS 1980  
 Zone: Colorado Northern Zone  
 System Datum: Mean Sea Level

## SECTION DETAILS

Sec	MD	Inc	Azi	TVD	+N/-S	+E/-W	Dleg	TFace	Vsect	Target
1	0.0	0.00	0.00	0.0	0.0	0.0	0.00	0.00	0.0	
2	1500.0	0.00	0.00	1500.0	0.0	0.0	0.00	0.00	0.0	
3	1913.5	8.27	32.42	1912.0	25.1	16.0	2.00	32.42	-15.7	
4	4546.8	8.27	32.42	4518.0	344.9	219.0	0.00	0.00	-215.1	
5	4960.2	0.00	0.00	4930.0	370.0	235.0	2.00	180.00	-230.8	
6	5214.0	0.00	0.00	5183.7	370.0	235.0	0.00	0.00	-230.8	
7	6158.4	85.00	268.55	5817.9	355.3	-345.9	9.00	268.55	349.9	
8	6233.4	85.00	268.55	5824.5	353.4	-420.6	0.00	0.00	424.6	
9	6285.1	89.65	268.55	5826.9	352.1	-472.2	9.00	0.00	476.2	
10	15735.1	89.65	268.55	5884.6	112.3	-9919.0	0.00	0.00	9919.7	Heston LD06-630 BHL 1320'FSL, 330'FWL



WELL DETAILS: Heston LD06-630					
Ground Level: 4802.0					
0.0	0.0	Northing	Easting	Latitude	Longitude
		1529548.95	3448605.57	40.775750	-103.880200
Plan: APD - Rev 0 (Heston LD06-630/Original Drilling)					
Created By: Shailey Jewell			Date: 14:26, October 13 2014		
OK to submit with 2A as per Noble Drilling					
10/13/2014 2:39					