

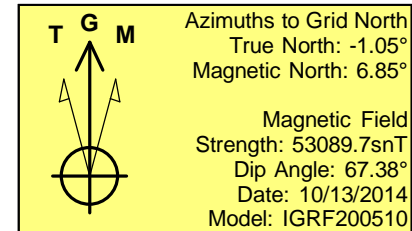
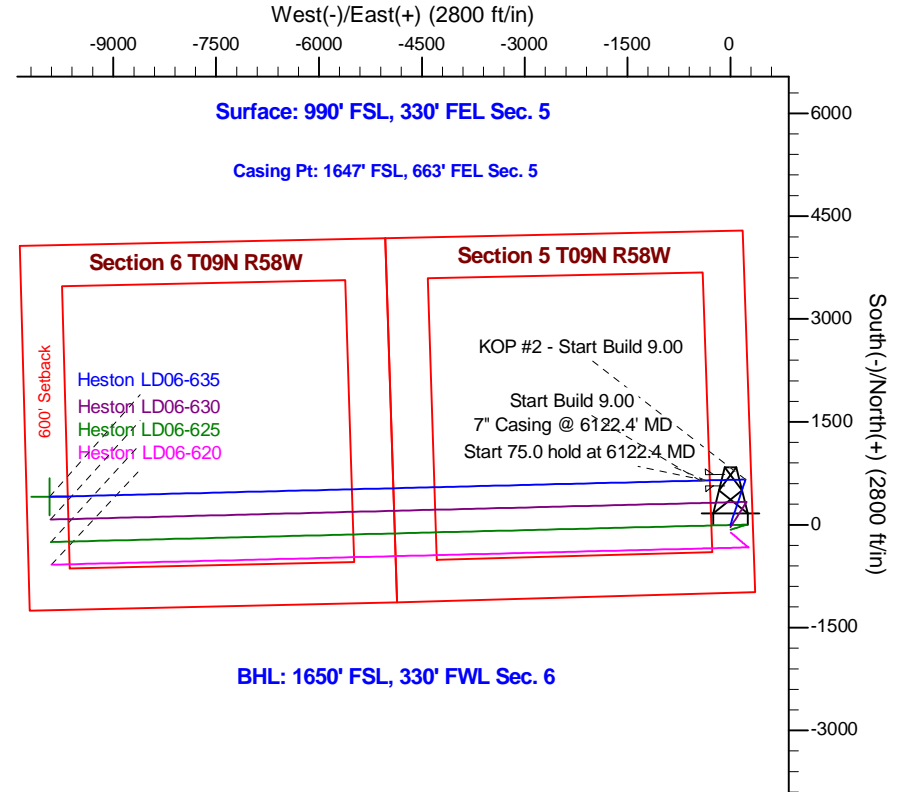
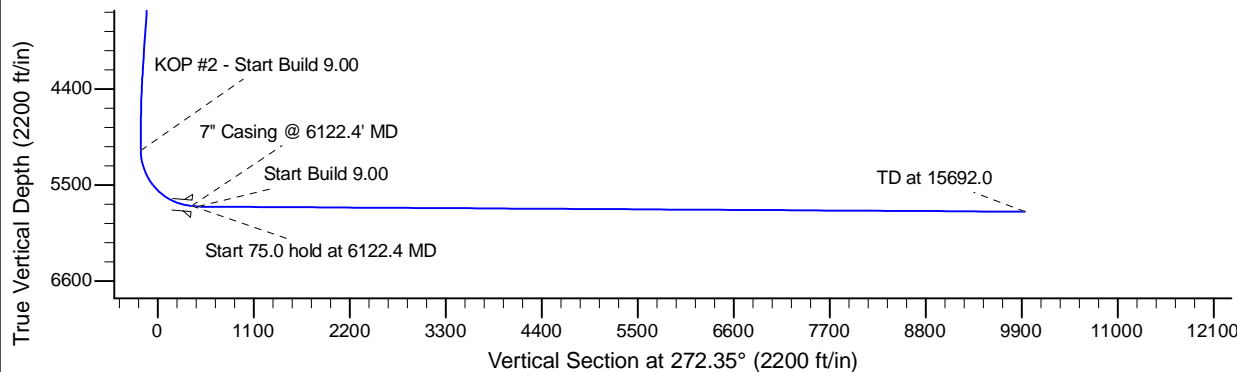
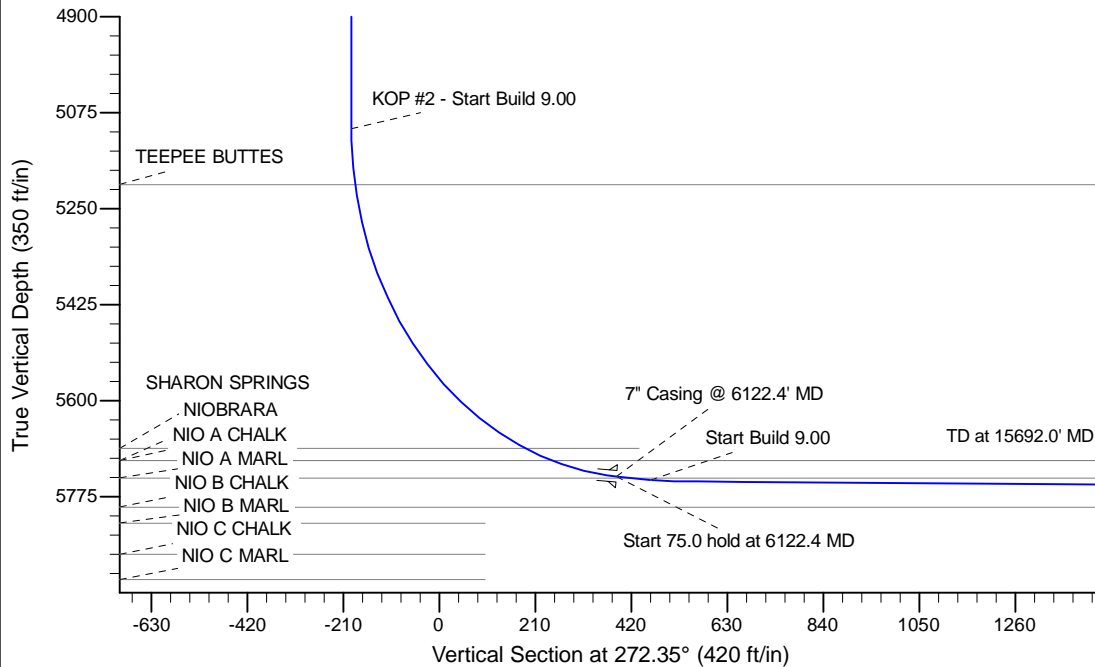
Project: Wattenberg Field
 Site: LD (Sec.5-T09N-R58W) Weld County, CO
 Well: Heston LD06-635
 Wellbore: Original Drilling
 Design: APD - Rev 0

Northern Region Drilling - Working

Geodetic System: US State Plane 1983
 Datum: North American Datum 1983
 Ellipsoid: GRS 1980
 Zone: Colorado Northern Zone
 System Datum: Mean Sea Level

SECTION DETAILS

Sec	MD	Inc	Azi	TVD	+N/-S	+E/-W	Dleg	TFace	Vsect	Target
1	0.0	0.00	0.00	0.0	0.0	0.0	0.00	0.00	0.0	
2	1200.0	0.00	0.00	1200.0	0.0	0.0	0.00	0.00	0.0	
3	1854.3	13.09	18.43	1848.6	70.6	23.5	2.00	18.43	-20.6	
4	4269.8	13.09	18.43	4201.4	589.4	196.5	0.00	0.00	-172.1	
5	4924.1	0.00	0.00	4850.0	660.0	220.0	2.00	180.00	-192.8	
6	5177.9	0.00	0.00	5103.9	660.0	220.0	0.00	0.00	-192.8	
7	6122.4	85.00	268.57	5738.1	645.5	-361.0	9.00	268.57	387.1	
8	6197.4	85.00	268.57	5744.6	643.7	-435.6	0.00	0.00	461.7	
9	6249.1	89.65	268.57	5747.0	642.4	-487.2	9.00	0.00	513.2	
10	15692.0	89.65	268.57	5804.7	407.3	-9927.1	0.00	0.00	9935.4	Heston LD06-635 BHL 1650'FSL, 330'FWL



WELL DETAILS: Heston LD06-635					
Ground Level: 4803.0					
0.0	0.0	Northing	Easting	Latitude	Longitude
		1529585.38	3448604.91	40.775850	-103.880200
Plan: APD - Rev 0 (Heston LD06-635/Original Drilling)					
Created By: Shailey Jewell Date: 14:31, October 13 2014					
OK to submit with 2A as per Noble Drilling					
10/13/2014 2:40					