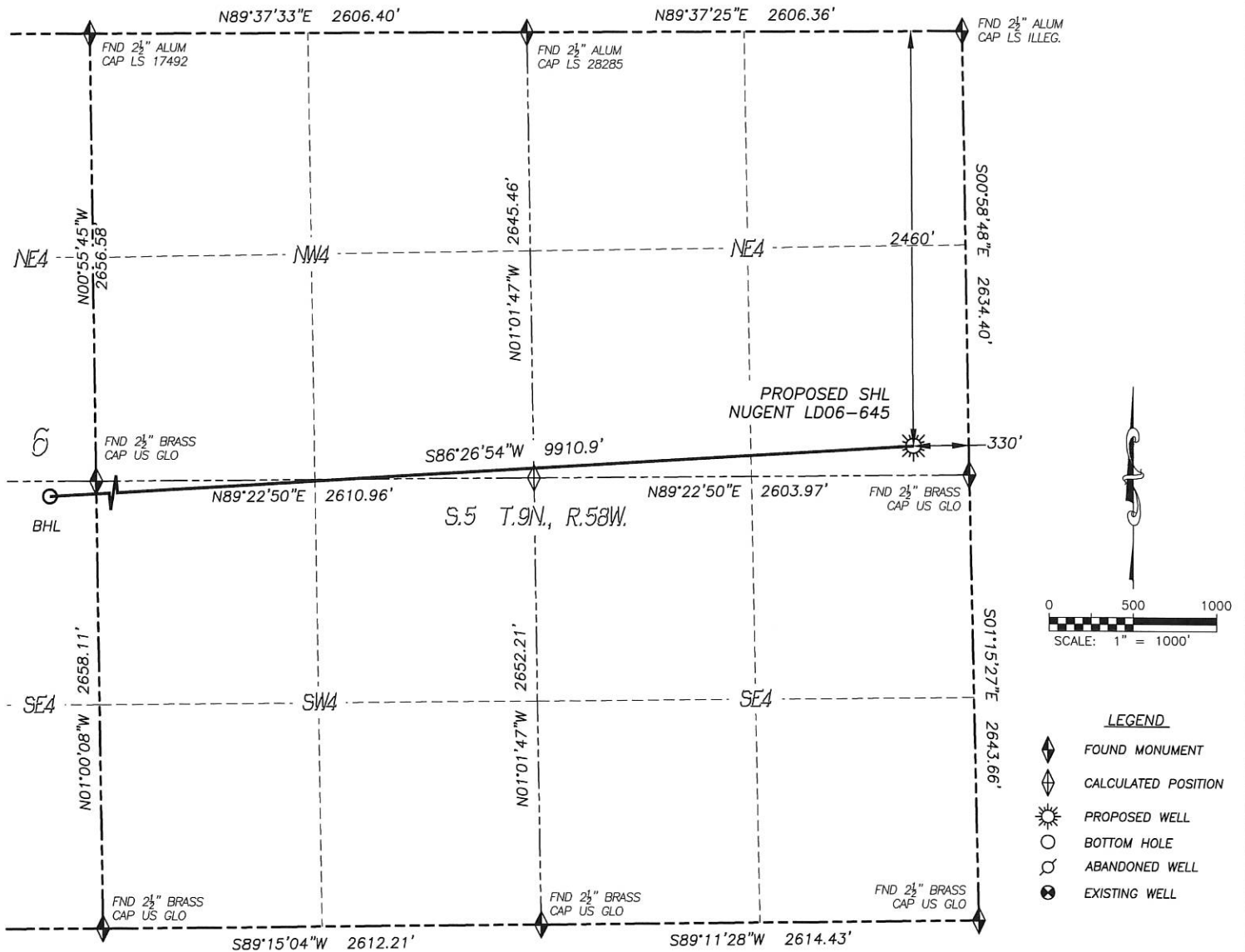


# WELL LOCATION CERTIFICATE

## NUGENT LD06-645

SECTION: 5  
TOWNSHIP: 9N  
RANGE: 58W  
SE4/NE4



### LEGEND

- ◆ FOUND MONUMENT
- ◇ CALCULATED POSITION
- ☼ PROPOSED WELL
- BOTTOM HOLE
- ⊗ ABANDONED WELL
- ⊙ EXISTING WELL

IN ACCORDANCE WITH A REQUEST FROM BRIAN JAMES OF NOBLE ENERGY INC., DALEY LAND SURVEYING, INC. HAS DETERMINED THE SURFACE LOCATION OF THE NUGENT LD06-645 WELL TO BE 2460' FNL, 330' FEL, AS MEASURED AT NINETY (90) DEGREES FROM THE SECTION LINES OF SECTION 5, TOWNSHIP 9 NORTH, RANGE 58 WEST, AND THE BOTTOM HOLE LOCATION TO BE 2310' FSL, 330' FWL, AS MEASURED AT NINETY (90) DEGREES FROM THE SECTION LINES OF SECTION 6, TOWNSHIP 9 NORTH, RANGE 58 WEST OF THE 6TH PRINCIPAL MERIDIAN, WELD COUNTY, COLORADO.

I HEREBY STATE THAT THIS WELL LOCATION CERTIFICATE WAS PREPARED BY ME OR UNDER MY DIRECT SUPERVISION, THAT THE WORK WAS COMPLETED ON 2/22/2014 FOR AND ON BEHALF OF NOBLE ENERGY, INC., AND THAT THIS MAP DOES NOT REPRESENT A BOUNDARY SURVEY, IT IS NOT A LAND SURVEY PLAT OR AN IMPROVEMENT SURVEY PLAT AND IT IS NOT TO BE RELIED UPON FOR THE ESTABLISHMENT OF FENCE, BUILDING OR OTHER FUTURE IMPROVEMENT LINES.

### NOTES:

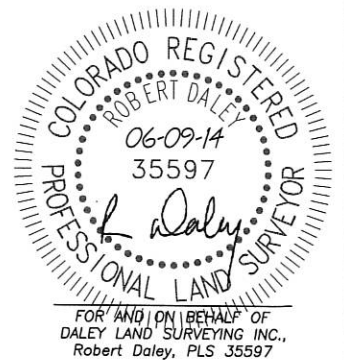
- 1) BEARINGS FOR THIS MAP ARE ASSUMED AND BASED UPON GPS OBSERVATIONS MADE BETWEEN MONUMENTS LOCATED AT THE NORTHEAST CORNER AND EAST QUARTER CORNER OF SECTION 5, T.9N., R.58W.
- 2) HORIZONTAL DATUM IS NAD83.
- 3) VERTICAL DATUM IS NAVD88 AND ORIGINATES FROM THE LOCAL C.O.R.S. NETWORK, UTILIZING THE GEOID12A MODEL.
- 4) SEE LOCATION DRAWING FOR VISIBLE IMPROVEMENTS WITHIN 500' OF PROPOSED DISTURBED AREA.
- 5) SURFACE USE: RANGELAND.
- 6) INST. OPERATOR: TREVOR DALEY.
- 7) NEAREST WELL: THERE ARE NO WELLS IN THIS SECTION.

### NEAREST CULTURAL ITEMS:

- |                                |          |
|--------------------------------|----------|
| 1) BUILDING:                   | 5280'±   |
| 2) BUILDING UNIT:              | 5280'±   |
| 3) HIGH OCC. BLD. UNIT:        | 5280'±   |
| 4) DES. OUTSIDE ACTIVITY AREA: | 5280'±   |
| 5) PUBLIC ROAD:                | 2450'± N |
| 6) ABOVE GROUND UTILITY:       | 5280'±   |
| 7) RAILROAD:                   | 5280'±   |
| 8) PROPERTY LINE:              | 330'± E  |

### NAD 83 LATITUDE AND LONGITUDE

SURFACE LOCATION:		BOTTOM HOLE:	
LATITUDE:	N40.78087°	LATITUDE:	N40.77927°
LONGITUDE:	W103.88032°	LONGITUDE:	W103.91604°
PDOP:	1.3		
ELEV:	4761'		
QTR/QTR:	SE4/NE4		



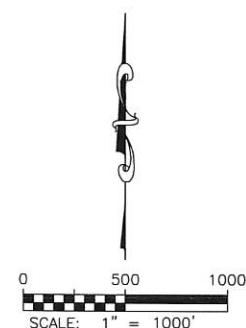
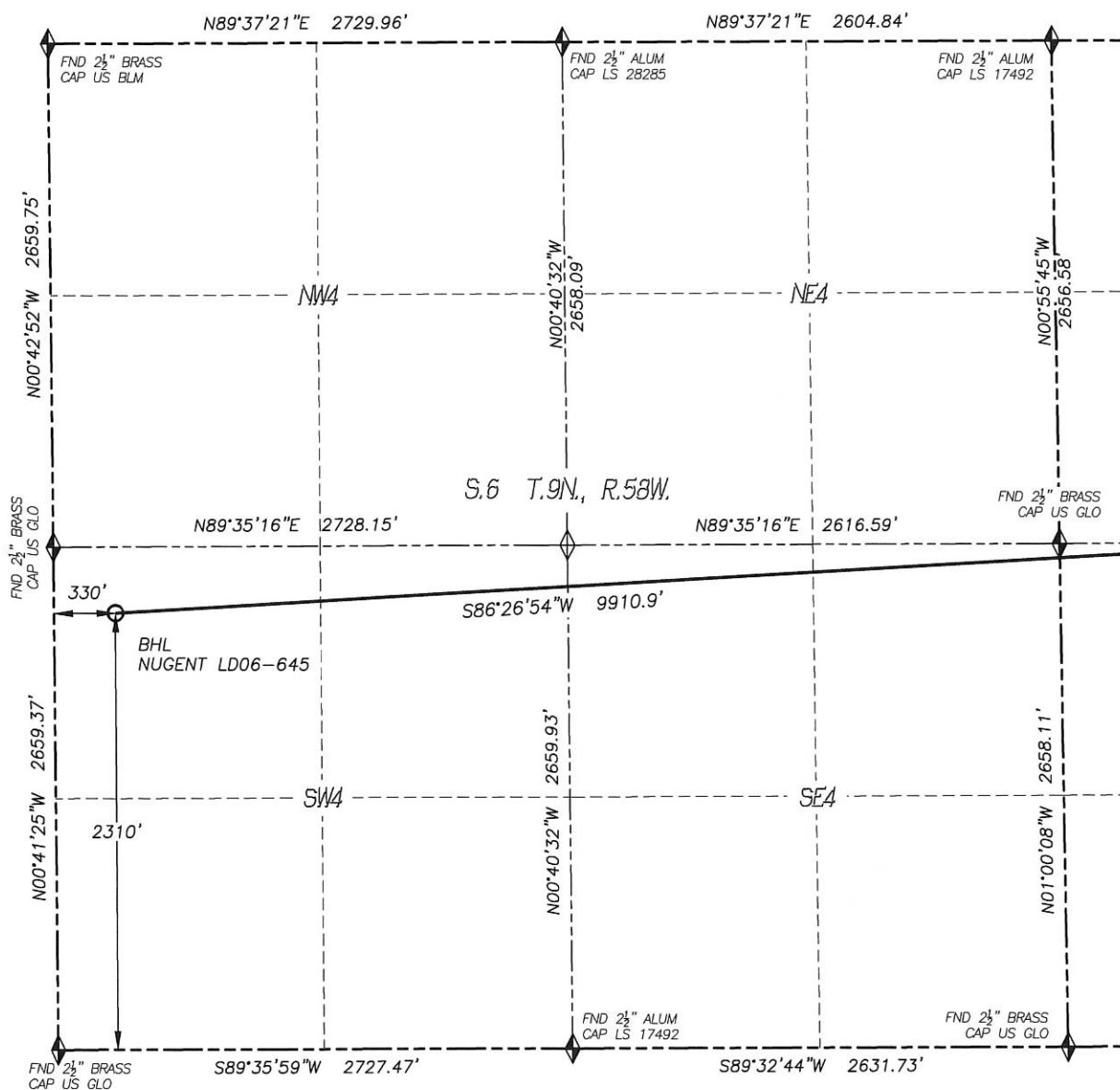
FOR AND ON BEHALF OF  
DALEY LAND SURVEYING INC.,  
Robert Daley, PLS 35597

SHEET 1 OF 2




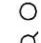


# WELL LOCATION CERTIFICATE

## NUGENT LD06-645

SECTION: 5  
TOWNSHIP: 9N  
RANGE: 58W  
SE4/NE4

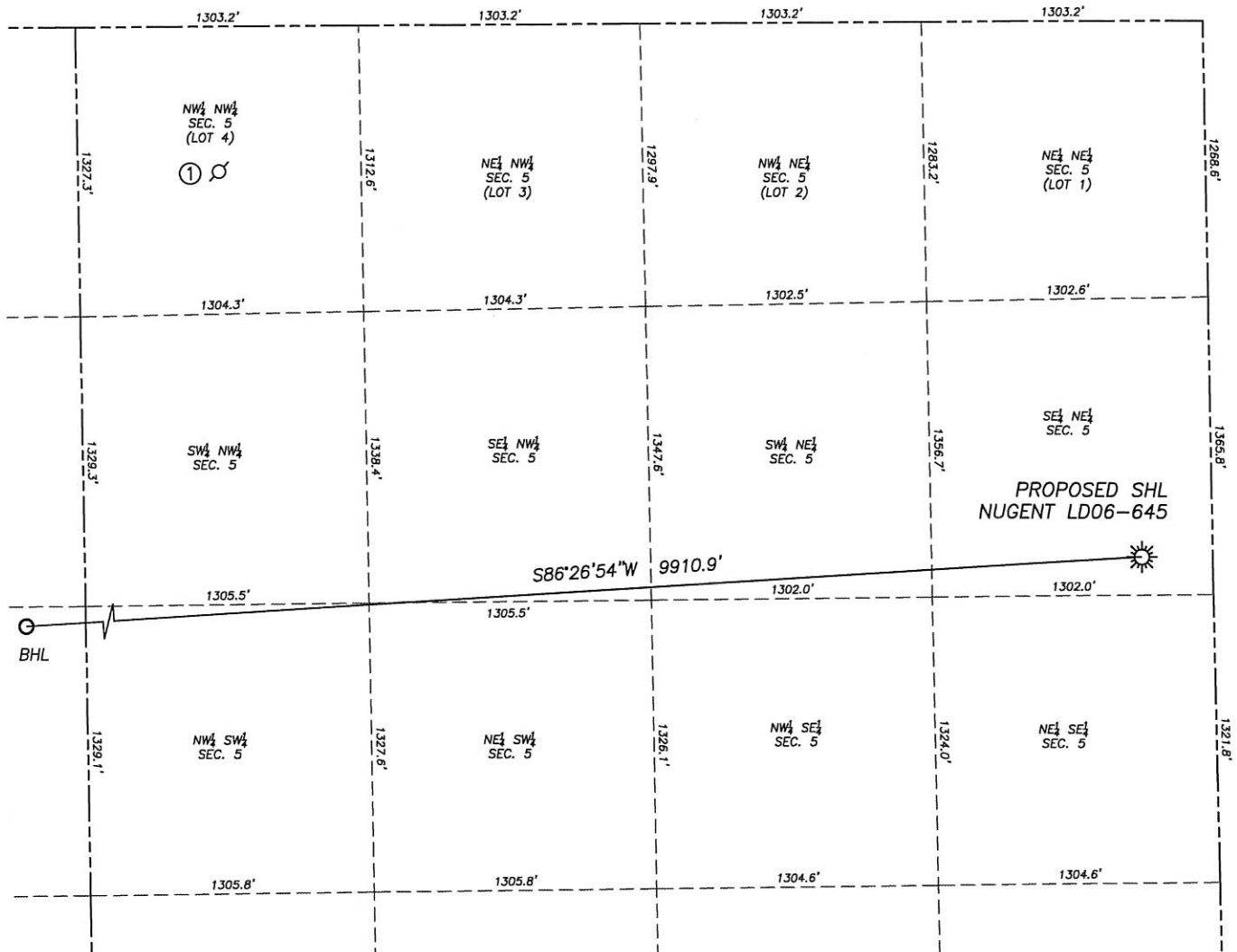


### LEGEND

-  FOUND MONUMENT
-  CALCULATED POSITION
-  PROPOSED WELL
-  BOTTOM HOLE
-  ABANDONED WELL
-  EXISTING WELL

SITE SKETCH  
NUGENT LD06-645

SECTION: 5  
TOWNSHIP: 9N  
RANGE: 58W  
SE4/NE4



①

NICOLA 1 (D/A)

NW/NW SEC. 5  
665' FNL, 651' FWL  
LAT. N40.78559  
LONG. W103.89588  
ELEV. 4814'

INFORMATION FROM  
COCGG DATABASE



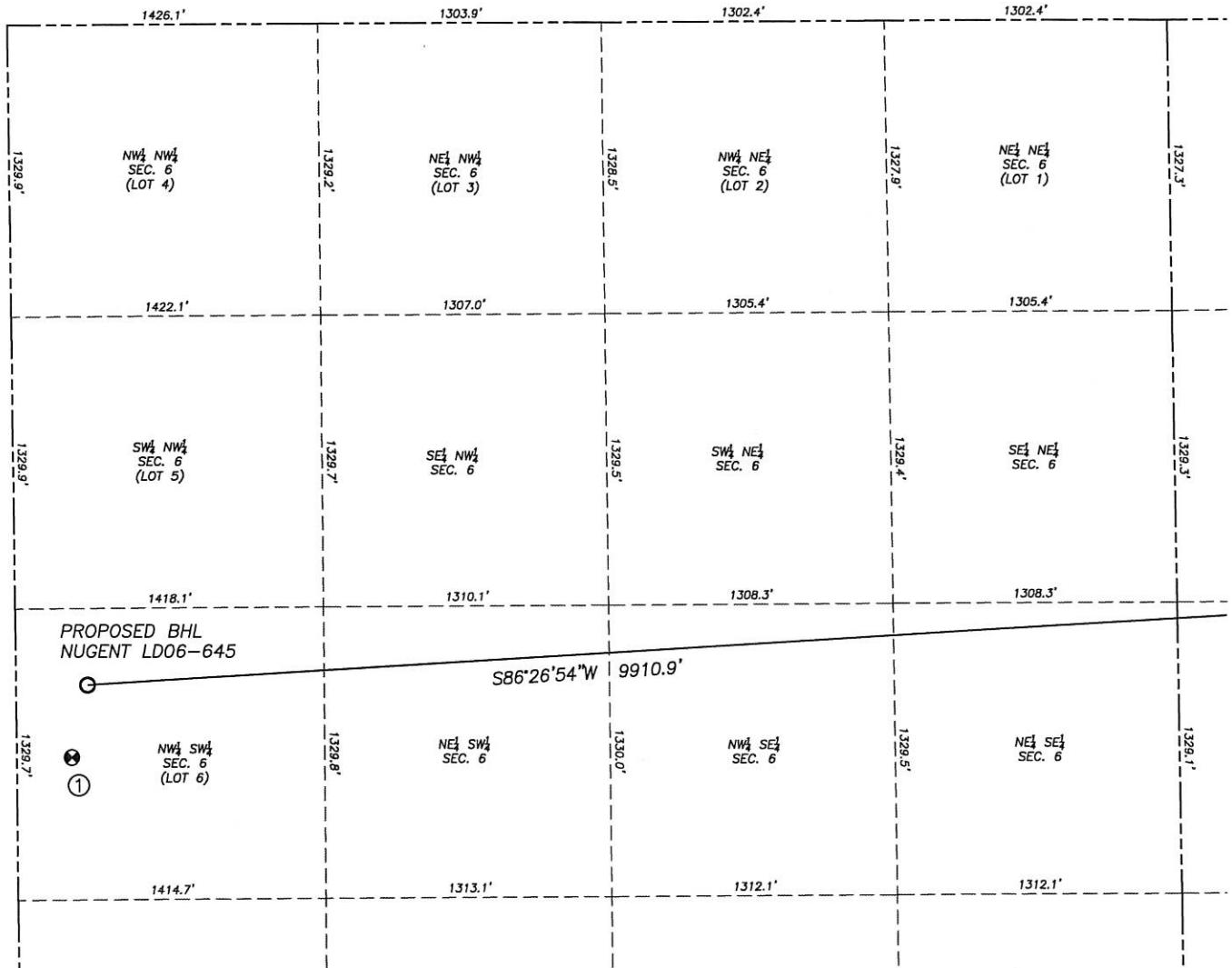
NOTES:

- NOTES:  
1. THIS DOES NOT REPRESENT A BOUNDARY SURVEY  
2. HORIZONTAL DATUM IS NAD83  
3. VERTICAL DATUM IS NAVD88 AND ORIGINATES FROM THE  
LOCAL C.O.R.S. NETWORK, UTILIZING THE GEOID12A MODEL.

# SITE SKETCH

## NUGENT LD06-645

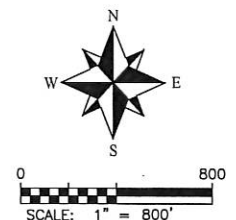
SECTION: 5  
TOWNSHIP: 9N  
RANGE: 58W  
SE4/NE4



①

TIMBRO LD06-64HN

NW/SW SEC. 6  
1980' FSL, 255' FWL  
LAT. N40.77837  
LONG. W103.91630  
ELEV. 4902'  
PDOP. 1.5



## NOTES:

1. THIS DOES NOT REPRESENT A BOUNDARY SURVEY
2. HORIZONTAL DATUM IS NAD83
3. VERTICAL DATUM IS NAVD88 AND ORIGINATES FROM THE LOCAL C.O.R.S. NETWORK, UTILIZING THE GEOID12A MODEL.