

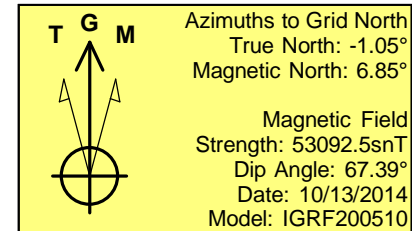
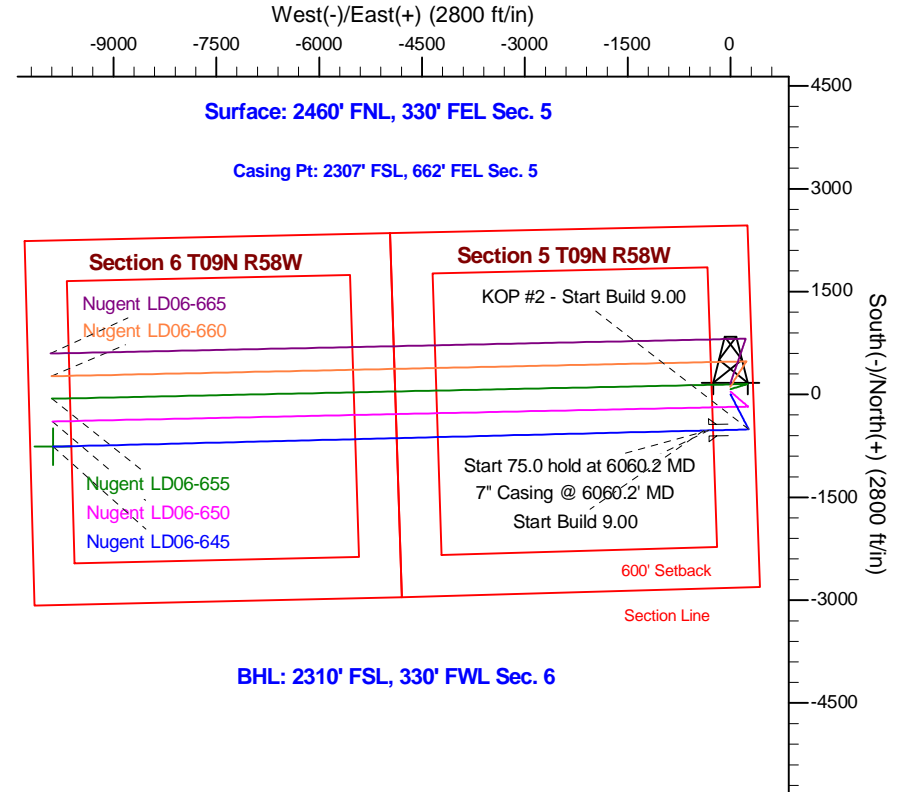
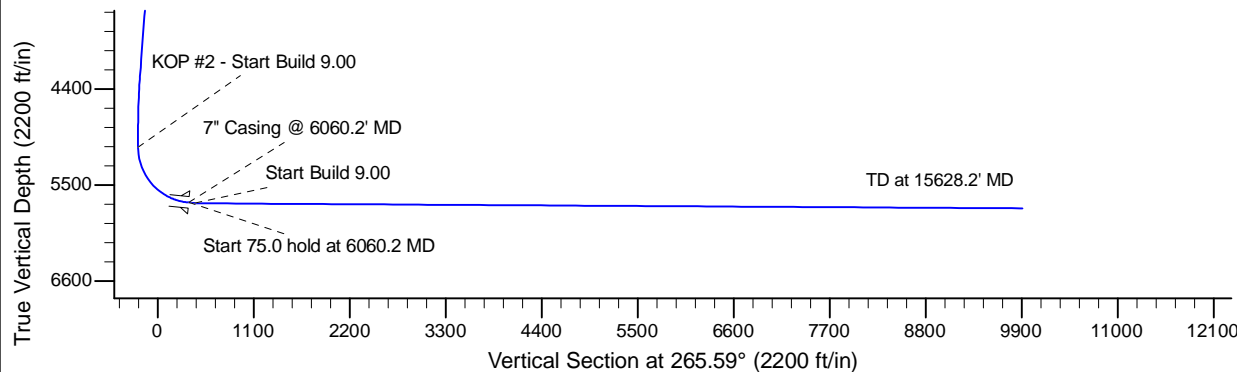
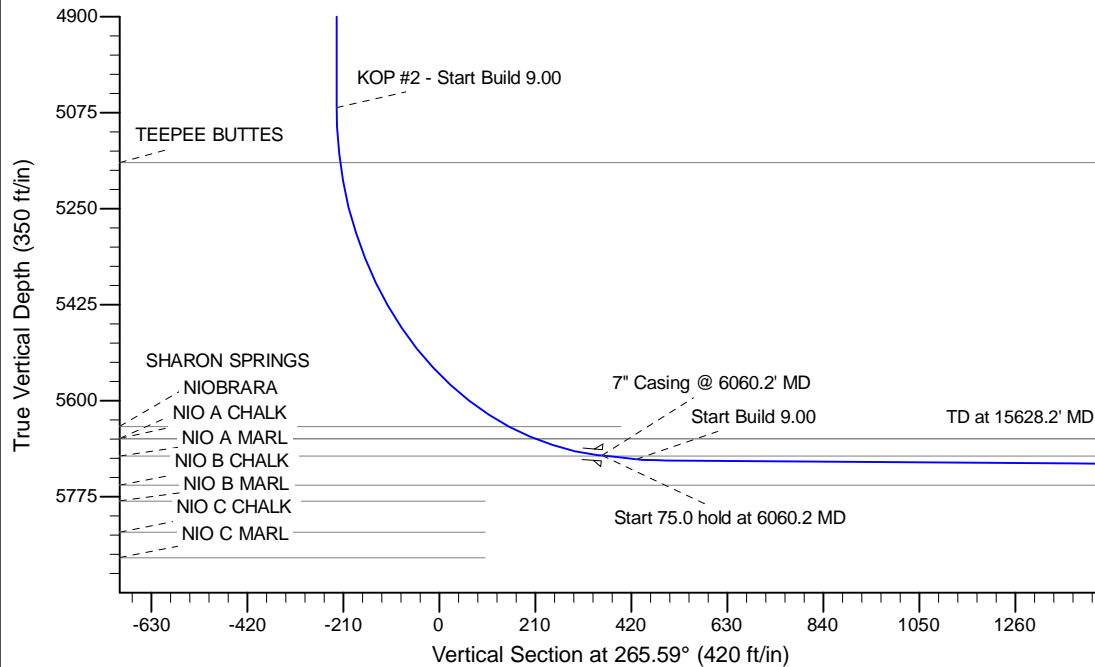
Project: Wattenberg Field
 Site: LD (Sec.5-T09N-R58W) Weld County, CO
 Well: Nugent LD06-645
 Wellbore: Original Drilling
 Design: APD - Rev 0

Northern Region Drilling - Working

Geodetic System: US State Plane 1983
 Datum: North American Datum 1983
 Ellipsoid: GRS 1980
 Zone: Colorado Northern Zone
 System Datum: Mean Sea Level

SECTION DETAILS

Sec	MD	Inc	Azi	TVD	+N/-S	+E/-W	Dleg	TFace	VSec	Target
1	0.0	0.00	0.00	0.0	0.0	0.0	0.00	0.00	0.0	
2	1200.0	0.00	0.00	1200.0	0.0	0.0	0.00	0.00	0.0	
3	1727.5	10.55	152.54	1724.5	-43.0	22.3	2.00	152.54	-19.0	
4	4337.6	10.55	152.54	4290.5	-467.0	242.7	0.00	0.00	-206.1	
5	4865.1	0.00	0.00	4815.0	-510.0	265.0	2.00	180.00	-225.0	
6	5115.8	0.00	0.00	5065.7	-510.0	265.0	0.00	0.00	-225.0	
7	6060.2	85.00	268.58	5699.9	-524.4	-316.0	9.00	268.58	355.3	
8	6135.2	85.00	268.58	5706.4	-526.3	-390.6	0.00	0.00	429.9	
9	6186.9	89.65	268.58	5708.8	-527.5	-442.2	9.00	0.00	481.5	
10	15628.2	89.65	268.58	5766.5	-761.5	-9880.5	0.00	0.00	9909.8	Nugent LD06-645 BHL 2310'FSL, 330'FWL



WELL DETAILS: Nugent LD06-645					
Ground Level: 4761.0					
0.0	0.0	Northing	Easting	Latitude	Longitude
		1531413.43	3448538.27	40.780870	-103.880320
Plan: APD - Rev 0 (Nugent LD06-645/Original Drilling)					
Created By: Shailey Jewell			Date: 15:26, October 13 2014		
OK to submit with 2A as per Noble Drilling 10/13/2014 4:33					