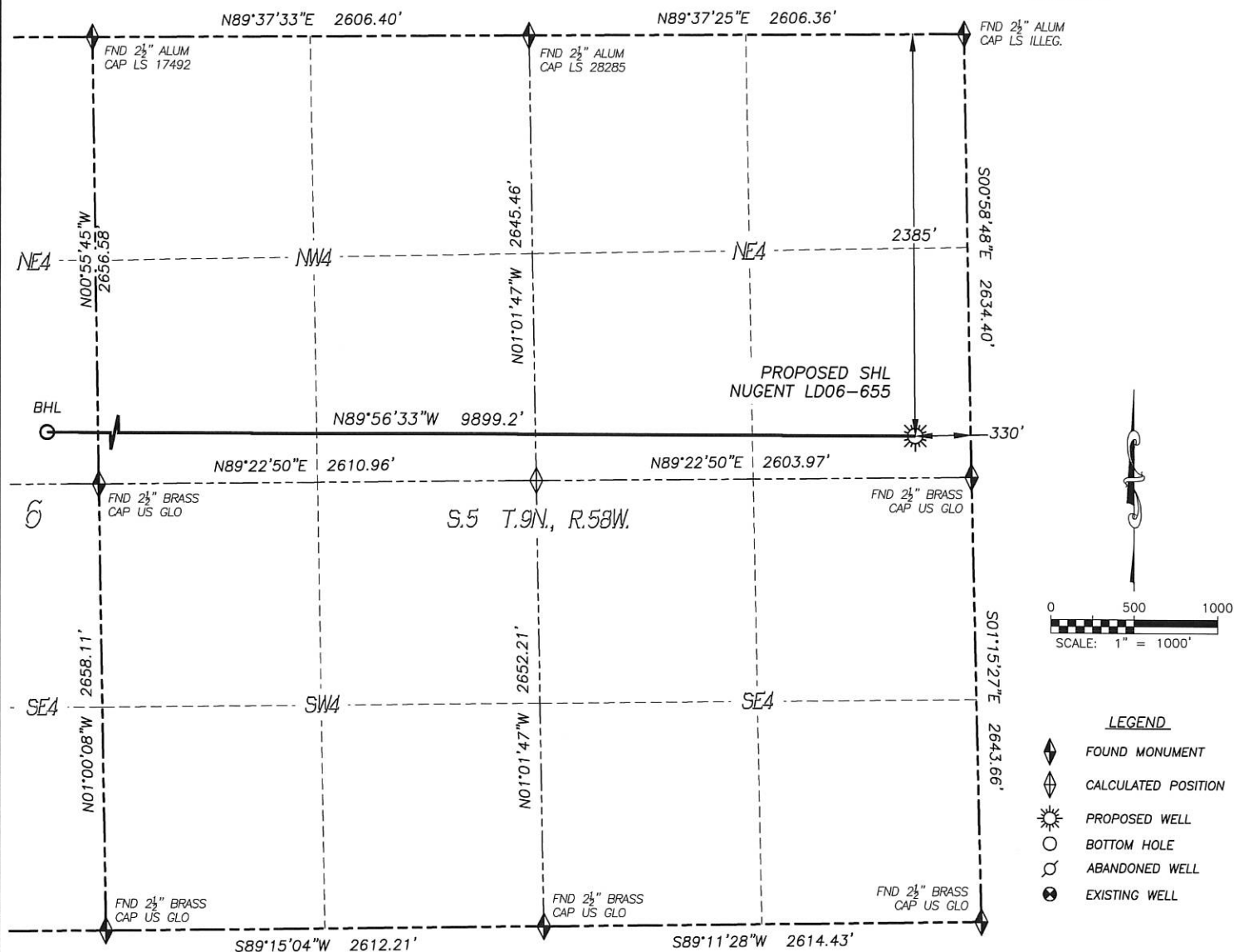


WELL LOCATION CERTIFICATE

NUGENT LD06-655

SECTION: 5
TOWNSHIP: 9N
RANGE: 58W
SE4/NE4



IN ACCORDANCE WITH A REQUEST FROM BRIAN JAMES OF NOBLE ENERGY INC., DALEY LAND SURVEYING, INC. HAS DETERMINED THE SURFACE LOCATION OF THE NUGENT LD06-655 WELL TO BE 2385' FNL, 330' FEL, AS MEASURED AT NINETY (90) DEGREES FROM THE SECTION LINES OF SECTION 5, TOWNSHIP 9 NORTH, RANGE 58 WEST, AND THE BOTTOM HOLE LOCATION TO BE 2310' FNL, 330' FWL, AS MEASURED AT NINETY (90) DEGREES FROM THE SECTION LINES OF SECTION 6, TOWNSHIP 9 NORTH, RANGE 58 WEST OF THE 6TH PRINCIPAL MERIDIAN, WELD COUNTY, COLORADO.

I HEREBY STATE THAT THIS WELL LOCATION CERTIFICATE WAS PREPARED BY ME OR UNDER MY DIRECT SUPERVISION, THAT THE WORK WAS COMPLETED ON 2/22/2014 FOR AND ON BEHALF OF NOBLE ENERGY, INC., AND THAT THIS MAP DOES NOT REPRESENT A BOUNDARY SURVEY, IT IS NOT A LAND SURVEY PLAT OR AN IMPROVEMENT SURVEY PLAT AND IT IS NOT TO BE RELIED UPON FOR THE ESTABLISHMENT OF FENCE, BUILDING OR OTHER FUTURE IMPROVEMENT LINES.

NOTES:

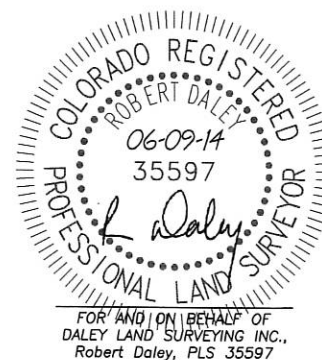
- 1) BEARINGS FOR THIS MAP ARE ASSUMED AND BASED UPON GPS OBSERVATIONS MADE BETWEEN MONUMENTS LOCATED AT THE NORTHEAST CORNER AND EAST QUARTER CORNER OF SECTION 5, T.9N., R.58W.
- 2) HORIZONTAL DATUM IS NAD83.
- 3) VERTICAL DATUM IS NAVD88 AND ORIGINATES FROM THE LOCAL C.O.R.S. NETWORK, UTILIZING THE GEOID12A MODEL.
- 4) SEE LOCATION DRAWING FOR VISIBLE IMPROVEMENTS WITHIN 500' OF PROPOSED DISTURBED AREA.
- 5) SURFACE USE: RANGELAND.
- 6) INST. OPERATOR: TREVOR DALEY.
- 7) NEAREST WELL: THERE ARE NO WELLS IN THIS SECTION.

NEAREST CULTURAL ITEMS:

- 1) BUILDING: 5280'±
- 2) BUILDING UNIT: 5280'±
- 3) HIGH OCC. BLD. UNIT: 5280'±
- 4) DES. OUTSIDE ACTIVITY AREA: 5280'±
- 5) PUBLIC ROAD: 2375'± N
- 6) ABOVE GROUND UTILITY: 5280'±
- 7) RAILROAD: 5280'±
- 8) PROPERTY LINE: 330'± E

NAD 83 LATITUDE AND LONGITUDE

SURFACE LOCATION:		BOTTOM HOLE:	
LATITUDE:	N40.78108°	LATITUDE:	N40.78119°
LONGITUDE:	W103.88032°	LONGITUDE:	W103.91606°
PDOP:	1.9		
ELEV:	4761'		
QTR/QTR:	SE4/NE4		



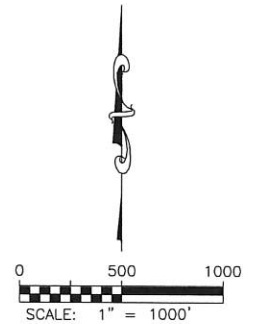
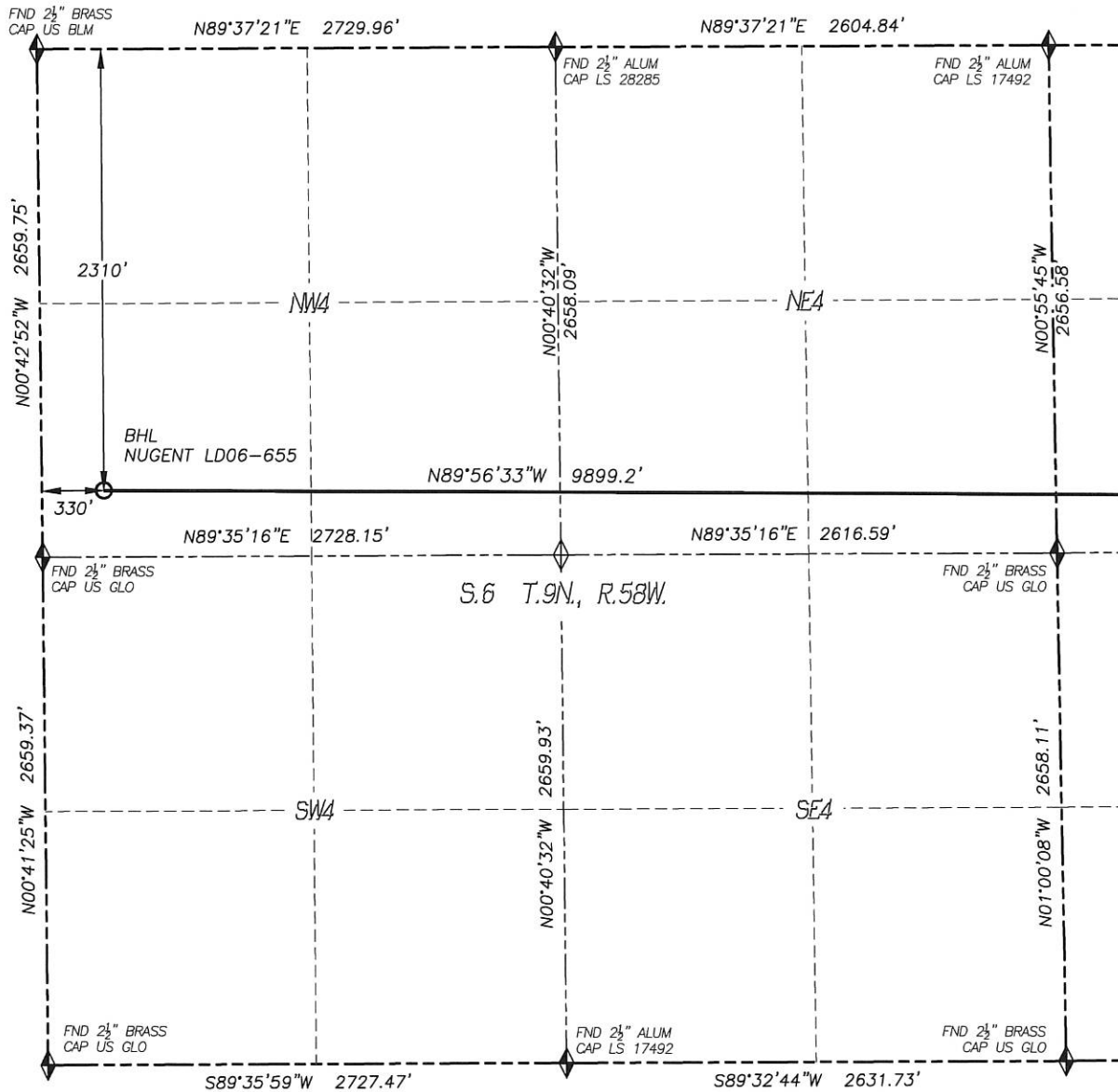
FOR AND ON BEHALF OF
DALEY LAND SURVEYING INC.,
Robert Daley, PLS 35597

SHEET 1 OF 2




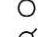


WELL LOCATION CERTIFICATE

NUGENT LD06-655

SECTION: 5
TOWNSHIP: 9N
RANGE: 58W
SE4/NE4



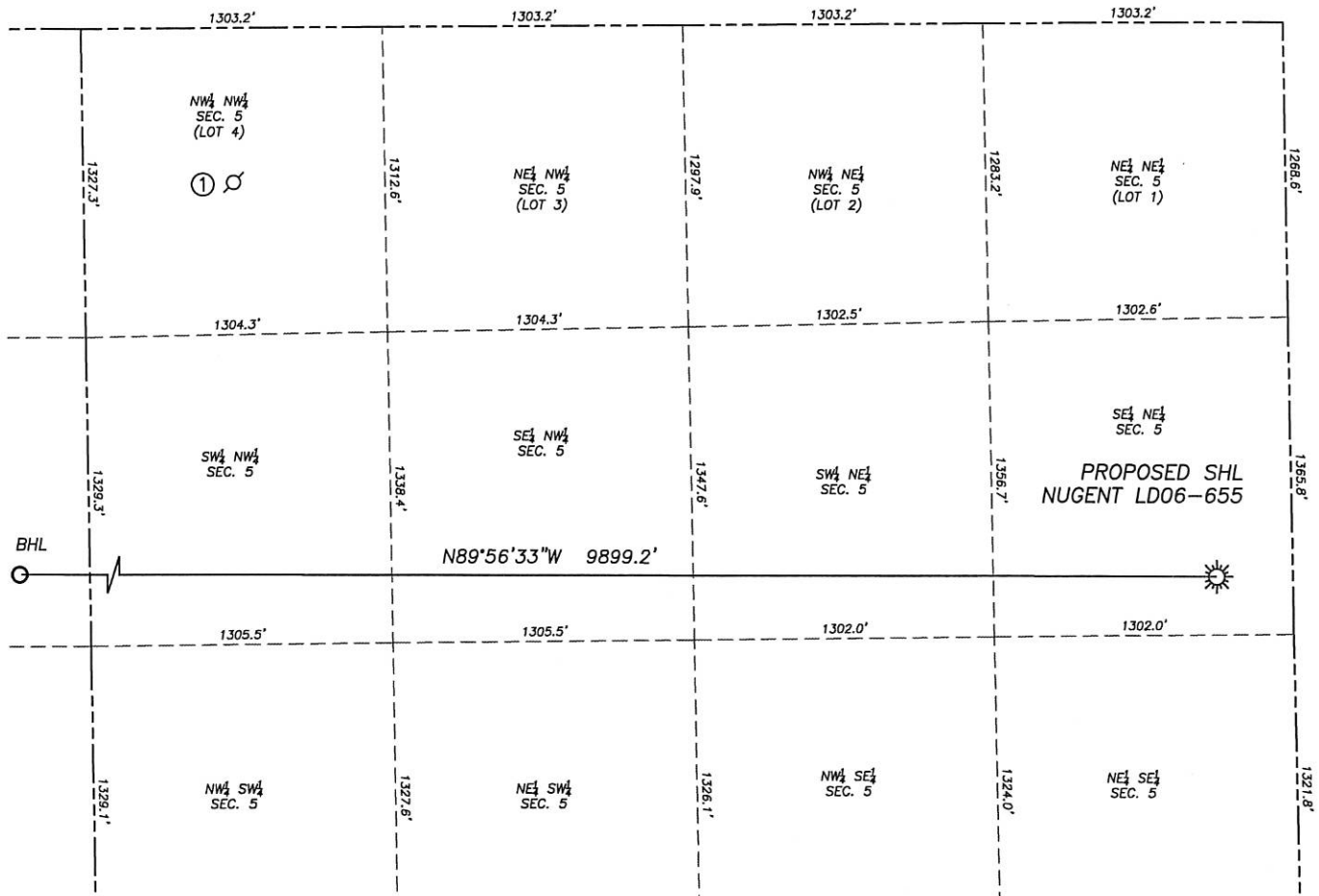
LEGEND

-  FOUND MONUMENT
-  CALCULATED POSITION
-  PROPOSED WELL
-  BOTTOM HOLE
-  ABANDONED WELL
-  EXISTING WELL

SITE SKETCH

NUGENT LD06-655

SECTION: 5
TOWNSHIP: 9N
RANGE: 58W
SE4/NE4



①

NICOLA 1 (D/A)

NW/NW SEC. 5
665' FNL, 651' FWL
LAT. N40.78559
LONG. W103.89588
ELEV. 4814'

INFORMATION FROM
COCGG DATABASE



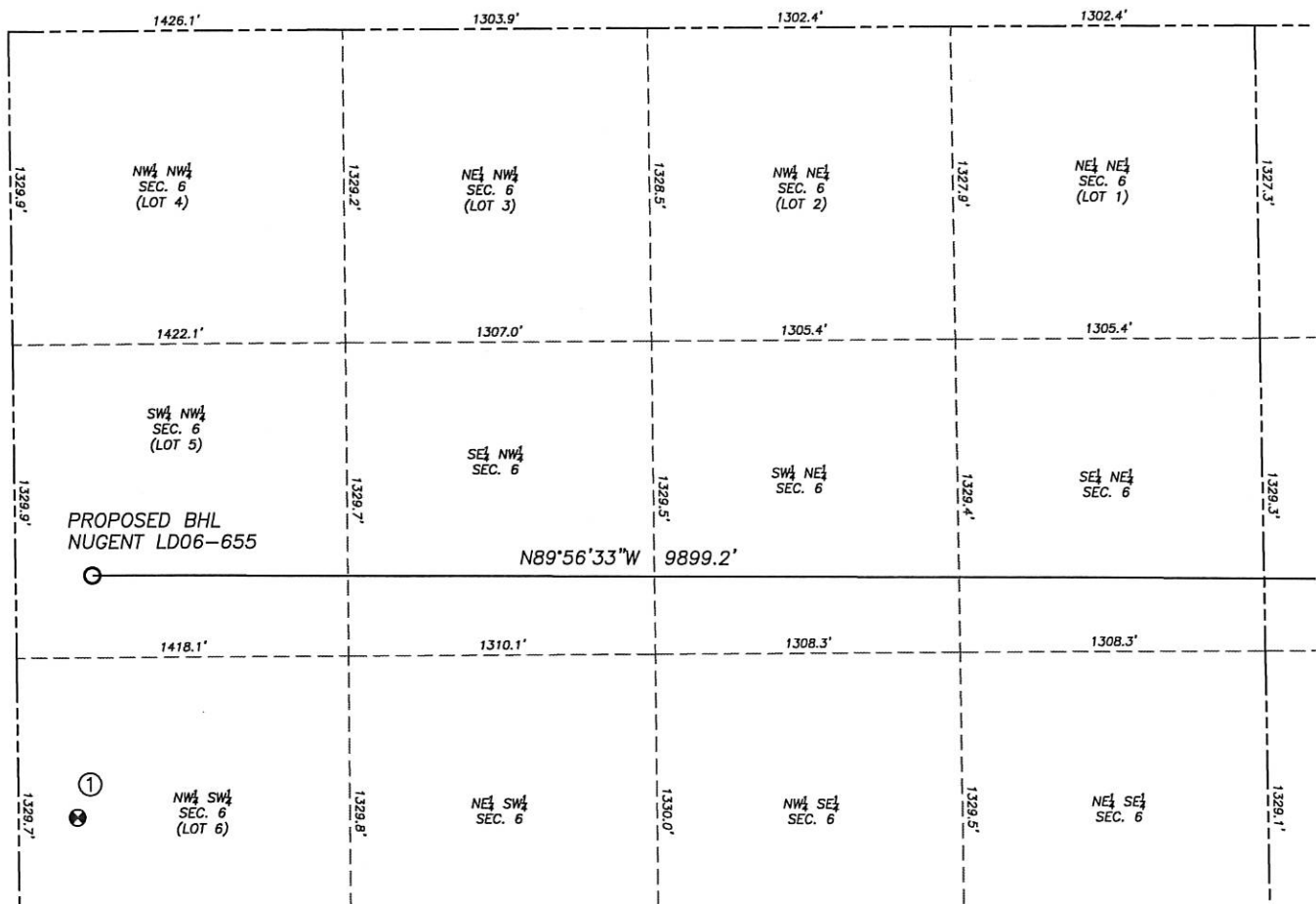
0 800
SCALE: 1" = 800'

NOTES:
1. THIS DOES NOT REPRESENT A BOUNDARY SURVEY
2. HORIZONTAL DATUM IS NAD83
3. VERTICAL DATUM IS NAVD88 AND ORIGINATES FROM THE
LOCAL C.O.R.S. NETWORK, UTILIZING THE GEOID12A MODEL.

SITE SKETCH

NUGENT LD06-655

SECTION: 5
TOWNSHIP: 9N
RANGE: 58W
SE4/NE4



①

TIMBRO LD06-64HN

NW/SW SEC. 6

1980' FSL, 255' FWL

LAT. N40.77837

LONG. W103.91630

ELEV. 4902'

PDOP. 1.5



0 800
SCALE: 1" = 800'

NOTES:

1. THIS DOES NOT REPRESENT A BOUNDARY SURVEY
2. HORIZONTAL DATUM IS NAD83
3. VERTICAL DATUM IS NAVD88 AND ORIGINATES FROM THE LOCAL C.O.R.S. NETWORK, UTILIZING THE GEOID12A MODEL.