

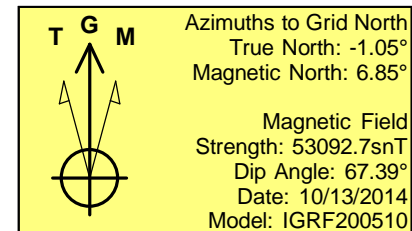
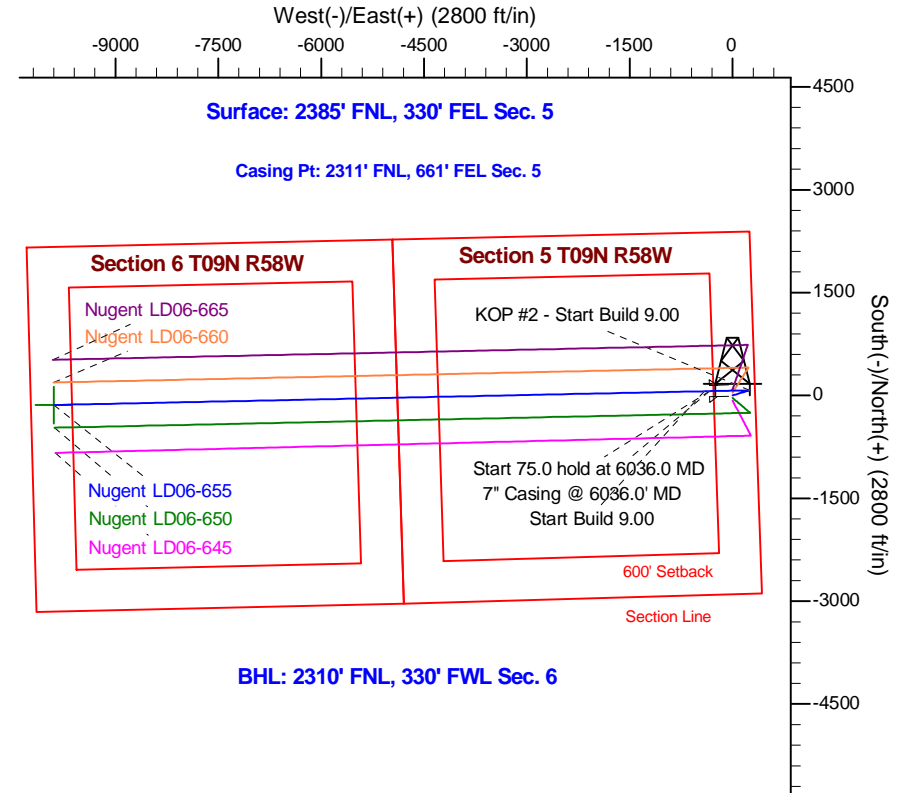
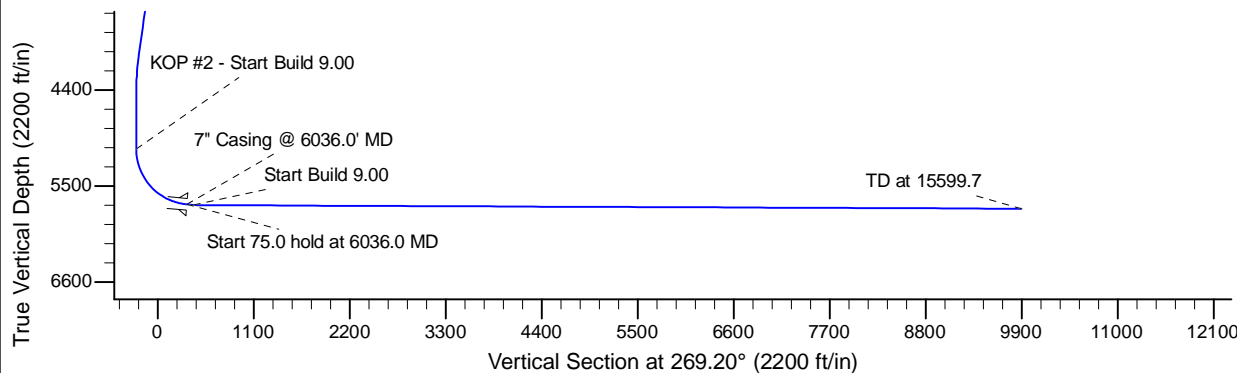
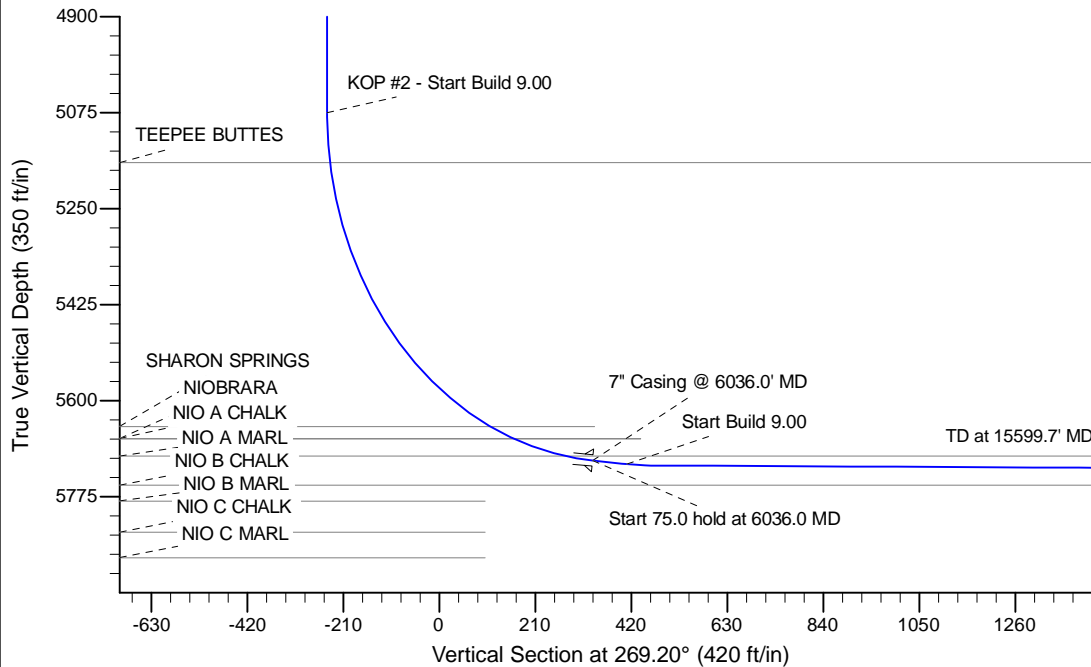
Project: Wattenberg Field
 Site: LD (Sec.5-T09N-R58W) Weld County, CO
 Well: Nugent LD06-655
 Wellbore: Original Drilling
 Design: APD - Rev 0

Northern Region Drilling - Working

Geodetic System: US State Plane 1983
 Datum: North American Datum 1983
 Ellipsoid: GRS 1980
 Zone: Colorado Northern Zone
 System Datum: Mean Sea Level

SECTION DETAILS

Sec	MD	Inc	Azi	TVD	+N/-S	+E/-W	Dleg	TFace	V Sect	Target
1	0.0	0.00	0.00	0.0	0.0	0.0	0.00	0.00	0.0	
2	2200.0	0.00	0.00	2200.0	0.0	0.0	0.00	0.00	0.0	
3	2601.0	8.02	72.98	2599.7	8.2	26.8	2.00	72.98	-26.9	
4	4035.6	8.02	72.98	4020.3	66.8	218.2	0.00	0.00	-219.1	
5	4436.7	0.00	0.00	4420.0	75.0	245.0	2.00	180.00	-246.0	
6	5091.5	0.00	0.00	5074.9	75.0	245.0	0.00	0.00	-246.0	
7	6036.0	85.00	268.79	5709.1	62.8	-336.0	9.00	268.79	335.1	
8	6111.0	85.00	268.79	5715.6	61.2	-410.7	0.00	0.00	409.8	
9	6163.8	89.75	268.79	5718.0	60.1	-463.4	9.00	0.00	462.5	
10	15599.7	89.75	268.79	5759.2	-138.7	-9897.1	0.00	0.00	9898.1	Nugent LD06-655 BHL 2310'FNL, 330'FWL



WELL DETAILS: Nugent LD06-655					
Ground Level: 4761.0					
0.0	0.0	Northing	Easting	Latitude	Longitude
		1531489.92	3448536.87	40.781080	-103.880320
Plan: APD - Rev 0 (Nugent LD06-655/Original Drilling)					
Created By: Shailey Jewell			Date: 15:40, October 13 2014		
OK to submit with 2A as per Noble Drilling					
10/13/2014 4:34					