

BONANZA CREEK ENERGY INC.

WELD COUNTY, COLORADO (NAD 83)

SE SW SEC. 1 T5N R62W 6th P.M.

STATE ANTELOPE 24-1-36XRLNB

ORIGINAL WELLBORE

16 October, 2014

Plan: PROPOSAL #1





Project: WELD COUNTY, COLORADO (NAD 83)
 Site: SE SW SEC. 1 T5N R62W 6th P.M.
 Well: STATE ANTELOPE 24-1-36XRLNB
 Wellbore: ORIGINAL WELLBORE
 Design: PROPOSAL #1

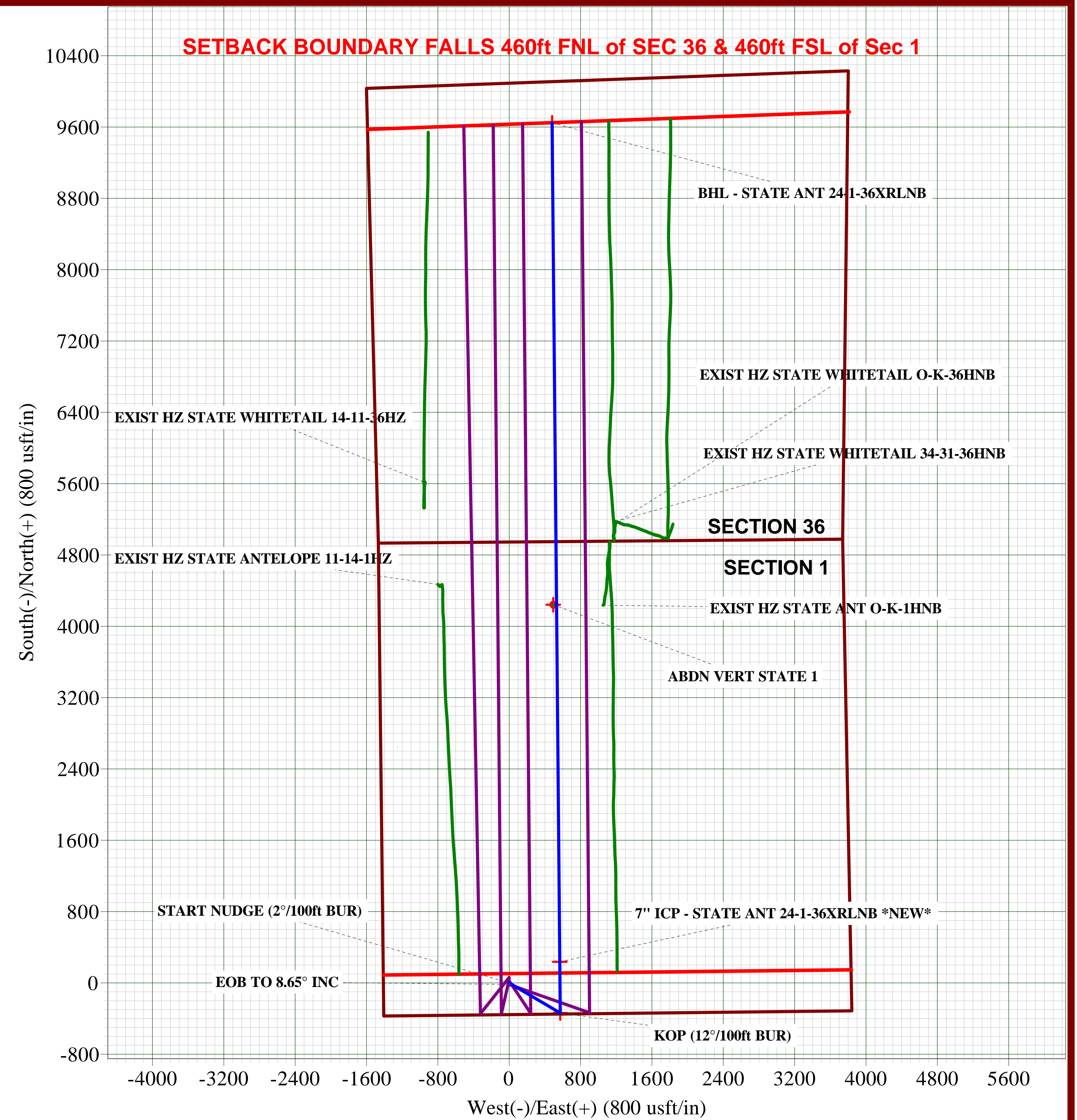
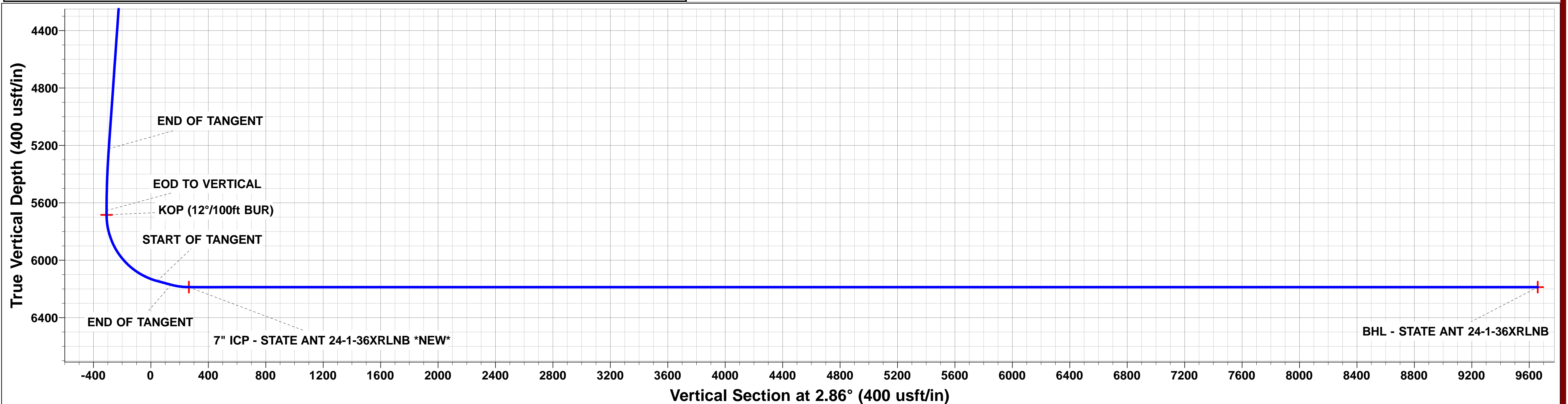
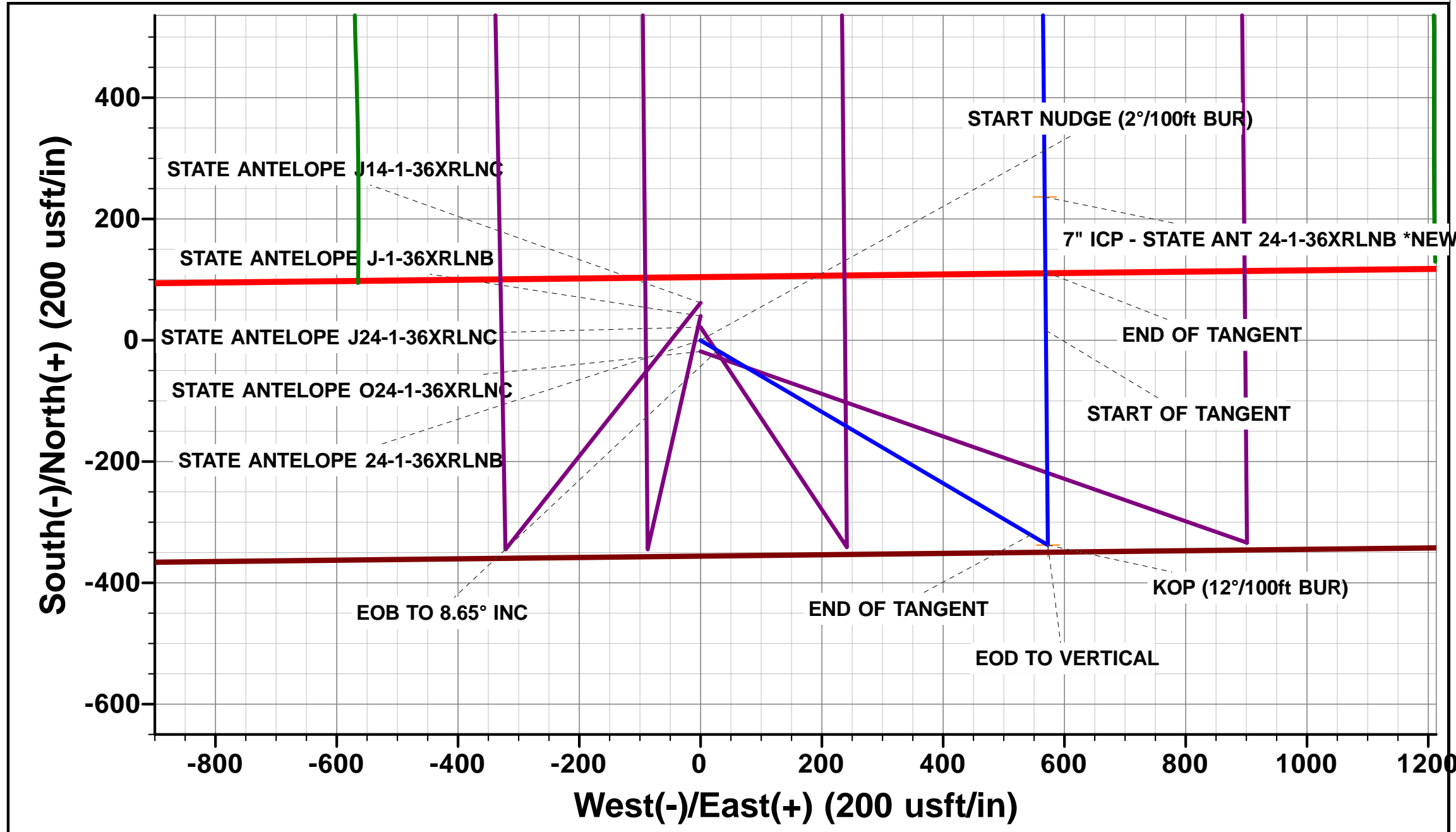
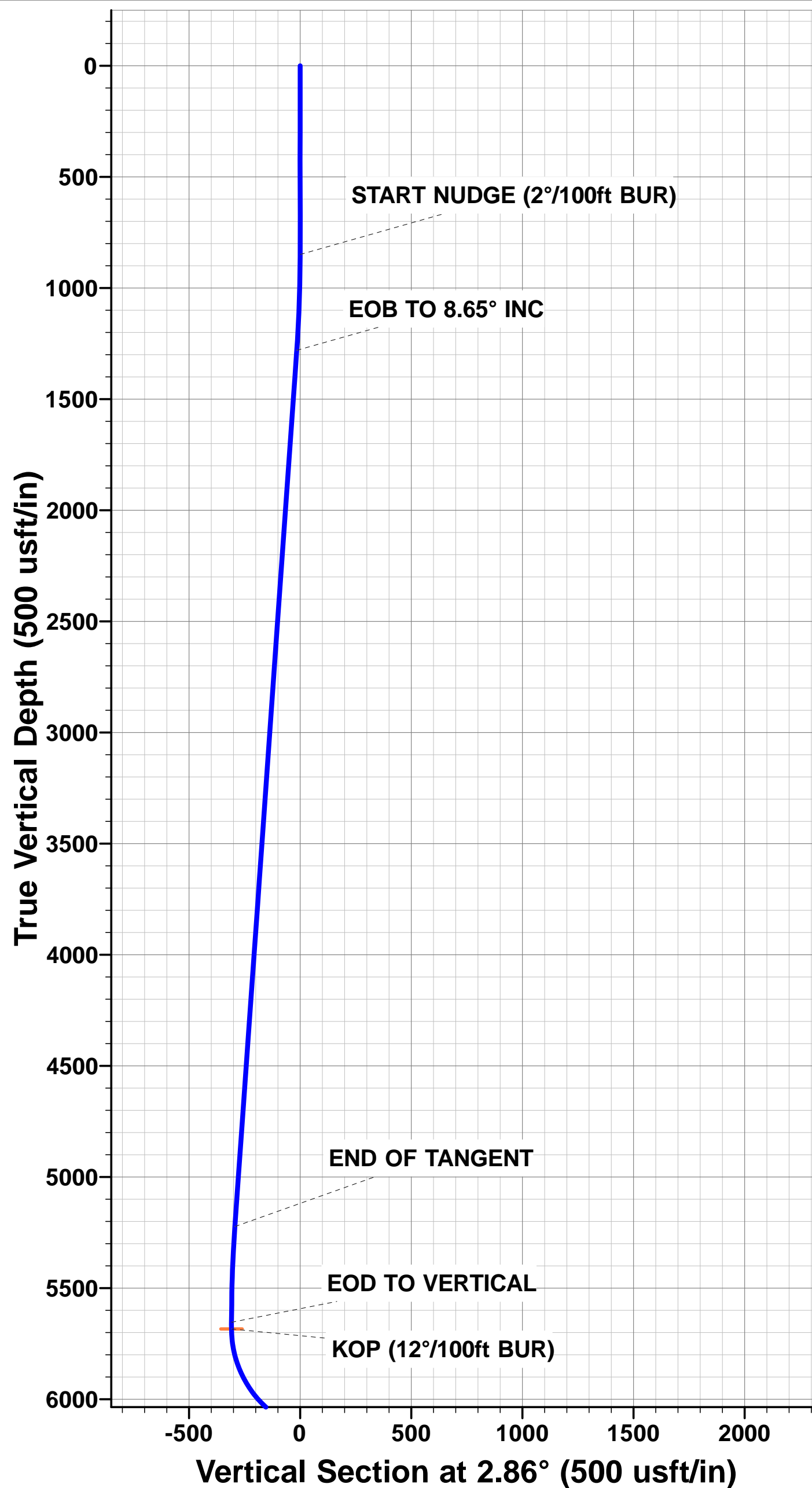
ANNOTATIONS

TVD	MD	Inc	Azi	+N/-S	+E/-W	Vsect	Dep	Annotation
850.0	850.0	0.00	0.00	0.0	0.0	0.0	0.0	START NUDDGE (2°/100ft BUR)
1280.7	1282.4	8.65	120.51	-16.5	28.1	-15.1	32.6	EOB TO 8.65° INC
5223.3	5270.2	8.65	120.51	-321.0	544.6	-293.4	632.2	END OF TANGENT
5654.0	5702.6	0.00	0.00	-337.5	572.7	-308.5	664.7	EOD TO VERTICAL
5684.0	5732.6	0.00	0.00	-337.5	572.7	-308.5	664.7	KOP (12°/100ft BUR)
6145.2	6357.6	75.00	359.48	16.4	569.5	44.7	1018.6	START OF TANGENT
6171.1	6457.6	75.00	359.48	113.0	568.6	141.2	1115.2	END OF TANGENT
6187.3	6582.6	90.00	359.48	236.5	567.5	264.5	1238.8	7" ICP - STATE ANT 24-1-36XRLNB *NEW*
6187.3	15993.5	90.00	359.47	9647.0	481.5	9659.1	10649.7	BHL - STATE ANT 24-1-36XRLNB

PROPOSED LOCAL COORDINATES:
 SHL: 358ft FSL & 1411ft FWL Sec 1
 7" ICP *NEW*: 589ft FNL & 1980ft FWL Sec 1
 BHL: 460ft FSL & 1980ft FWL Sec 36

WELLBORE TARGET DETAILS (LAT/LONG)

Name	TVD	+N/-S	+E/-W	Latitude	Longitude
KOP - STATE ANT 24-1-36XRLNB	5684.0	-337.5	572.7	40.422814	-104.273593
7" ICP - STATE ANT 24-1-36XRLNB *NEW*	6187.3	236.5	567.5	40.424389	-104.273612
BHL - STATE ANT 24-1-36XRLNB	6187.3	9647.0	481.5	40.450220	-104.273920



Planning Report



Database:	EDM 5000.1 Single User Db	Local Co-ordinate Reference:	Well STATE ANTELOPE 24-1-36XRLNB
Company:	BONANZA CREEK ENERGY INC.	TVD Reference:	KB-EST @ 4687.3usft (Original Well Elev)
Project:	WELD COUNTY, COLORADO (NAD 83)	MD Reference:	KB-EST @ 4687.3usft (Original Well Elev)
Site:	SE SW SEC. 1 T5N R62W 6th P.M.	North Reference:	True
Well:	STATE ANTELOPE 24-1-36XRLNB	Survey Calculation Method:	Minimum Curvature
Wellbore:	ORIGINAL WELLBORE		
Design:	PROPOSAL #1		

Project	WELD COUNTY, COLORADO (NAD 83)		
Map System:	US State Plane 1983	System Datum:	Mean Sea Level
Geo Datum:	North American Datum 1983		
Map Zone:	Colorado Northern Zone		Using geodetic scale factor

Site	SE SW SEC. 1 T5N R62W 6th P.M.				
Site Position:		Northing:	1,399,623.97 usft	Latitude:	40.423910
From:	Lat/Long	Easting:	3,340,863.06 usft	Longitude:	-104.275650
Position Uncertainty:	0.0 usft	Slot Radius:	1.10000ft	Grid Convergence:	0.79 °

Well	STATE ANTELOPE 24-1-36XRLNB					
Well Position	+N-S	-61.9 usft	Northing:	1,399,562.04 usft	Latitude:	40.423740
	+E-W	0.0 usft	Easting:	3,340,863.91 usft	Longitude:	-104.275650
Position Uncertainty		0.0 usft	Wellhead Elevation:	usft	Ground Level:	4,670.3 usft

Wellbore	ORIGINAL WELLBORE				
Magnetics	Model Name	Sample Date	Declination (°)	Dip Angle (°)	Field Strength (nT)
	IGRF2010	16/10/2014	8.15	67.03	52,844

Design	PROPOSAL #1			
Audit Notes:				
Version:	Phase:	PROTOTYPE	Tie On Depth:	0.0
Vertical Section:	Depth From (TVD) (usft)	+N-S (usft)	+E-W (usft)	Direction (°)
	6,187.3	0.0	0.0	2.86

Plan Sections											
MD (usft)	Inc (°)	Azi (°)	Vertical Depth	SS (usft)	+N-S (usft)	+E-W (usft)	Dogleg Rate (°/100usft)	Build Rate (°/100usft)	Turn Rate (°/100usft)	TFO (°)	Target
0.0	0.00	0.00	0.0	-4,687.3	0.0	0.0	0.00	0.00	0.00	0.00	
850.0	0.00	0.00	850.0	-3,837.3	0.0	0.0	0.00	0.00	0.00	0.00	
1,282.4	8.65	120.51	1,280.7	-3,406.6	-16.5	28.1	2.00	2.00	0.00	120.51	
5,270.2	8.65	120.51	5,223.3	536.0	-321.0	544.6	0.00	0.00	0.00	0.00	
5,702.6	0.00	0.00	5,654.0	966.7	-337.5	572.7	2.00	-2.00	0.00	180.00	
5,732.6	0.00	0.00	5,684.0	996.7	-337.5	572.7	0.00	0.00	0.00	0.00	KOP - STATE ANT
6,357.6	75.00	359.48	6,145.2	1,457.9	16.4	569.5	12.00	12.00	0.00	359.48	
6,457.6	75.00	359.48	6,171.1	1,483.8	113.0	568.6	0.00	0.00	0.00	0.00	
6,582.6	90.00	359.48	6,187.3	1,500.0	236.5	567.5	12.00	12.00	0.00	0.00	
15,993.5	90.00	359.47	6,187.3	1,500.0	9,647.0	481.5	0.00	0.00	0.00	-85.52	BHL - STATE ANT

Planning Report



Database:	EDM 5000.1 Single User Db	Local Co-ordinate Reference:	Well STATE ANTELOPE 24-1-36XRLNB
Company:	BONANZA CREEK ENERGY INC.	TVD Reference:	KB-EST @ 4687.3usft (Original Well Elev)
Project:	WELD COUNTY, COLORADO (NAD 83)	MD Reference:	KB-EST @ 4687.3usft (Original Well Elev)
Site:	SE SW SEC. 1 T5N R62W 6th P.M.	North Reference:	True
Well:	STATE ANTELOPE 24-1-36XRLNB	Survey Calculation Method:	Minimum Curvature
Wellbore:	ORIGINAL WELLBORE		
Design:	PROPOSAL #1		

Planned Survey										
MD (usft)	Inc (°)	Azi (°)	TVD (usft)	SS (usft)	+N/-S (usft)	+E/-W (usft)	Vertical Section (usft)	Dogleg Rate (°/100usft)	Build Rate (°/100usft)	Turn Rate (°/100usft)
0.0	0.00	0.00	0.0	4,687.30	0.0	0.0	0.0	0.00	0.00	0.00
100.0	0.00	0.00	100.0	4,587.30	0.0	0.0	0.0	0.00	0.00	0.00
200.0	0.00	0.00	200.0	4,487.30	0.0	0.0	0.0	0.00	0.00	0.00
300.0	0.00	0.00	300.0	4,387.30	0.0	0.0	0.0	0.00	0.00	0.00
400.0	0.00	0.00	400.0	4,287.30	0.0	0.0	0.0	0.00	0.00	0.00
500.0	0.00	0.00	500.0	4,187.30	0.0	0.0	0.0	0.00	0.00	0.00
600.0	0.00	0.00	600.0	4,087.30	0.0	0.0	0.0	0.00	0.00	0.00
700.0	0.00	0.00	700.0	3,987.30	0.0	0.0	0.0	0.00	0.00	0.00
800.0	0.00	0.00	800.0	3,887.30	0.0	0.0	0.0	0.00	0.00	0.00
START NUDGE (2°/100ft BUR)										
850.0	0.00	0.00	850.0	3,837.30	0.0	0.0	0.0	0.00	0.00	0.00
900.0	1.00	120.51	900.0	3,787.30	-0.2	0.4	-0.2	2.00	2.00	0.00
1,000.0	3.00	120.51	999.9	3,687.37	-2.0	3.4	-1.8	2.00	2.00	0.00
1,100.0	5.00	120.51	1,099.7	3,587.62	-5.5	9.4	-5.1	2.00	2.00	0.00
1,200.0	7.00	120.51	1,199.1	3,488.17	-10.8	18.4	-9.9	2.00	2.00	0.00
EOB TO 8.65° INC										
1,282.4	8.65	120.51	1,280.7	3,406.55	-16.5	28.1	-15.1	2.00	2.00	0.00
1,300.0	8.65	120.51	1,298.2	3,389.14	-17.9	30.3	-16.3	0.00	0.00	0.00
1,400.0	8.65	120.51	1,397.0	3,290.28	-25.5	43.3	-23.3	0.00	0.00	0.00
1,500.0	8.65	120.51	1,495.9	3,191.41	-33.1	56.2	-30.3	0.00	0.00	0.00
1,600.0	8.65	120.51	1,594.7	3,092.55	-40.8	69.2	-37.3	0.00	0.00	0.00
1,700.0	8.65	120.51	1,693.6	2,993.69	-48.4	82.2	-44.3	0.00	0.00	0.00
1,800.0	8.65	120.51	1,792.5	2,894.82	-56.0	95.1	-51.2	0.00	0.00	0.00
1,900.0	8.65	120.51	1,891.3	2,795.96	-63.7	108.1	-58.2	0.00	0.00	0.00
2,000.0	8.65	120.51	1,990.2	2,697.10	-71.3	121.0	-65.2	0.00	0.00	0.00
2,100.0	8.65	120.51	2,089.1	2,598.23	-79.0	134.0	-72.2	0.00	0.00	0.00
2,200.0	8.65	120.51	2,187.9	2,499.37	-86.6	146.9	-79.2	0.00	0.00	0.00
2,300.0	8.65	120.51	2,286.8	2,400.51	-94.2	159.9	-86.1	0.00	0.00	0.00
2,400.0	8.65	120.51	2,385.7	2,301.65	-101.9	172.8	-93.1	0.00	0.00	0.00
2,500.0	8.65	120.51	2,484.5	2,202.78	-109.5	185.8	-100.1	0.00	0.00	0.00
2,600.0	8.65	120.51	2,583.4	2,103.92	-117.1	198.7	-107.1	0.00	0.00	0.00
2,700.0	8.65	120.51	2,682.2	2,005.06	-124.8	211.7	-114.0	0.00	0.00	0.00
2,800.0	8.65	120.51	2,781.1	1,906.19	-132.4	224.6	-121.0	0.00	0.00	0.00
2,900.0	8.65	120.51	2,880.0	1,807.33	-140.0	237.6	-128.0	0.00	0.00	0.00
3,000.0	8.65	120.51	2,978.8	1,708.47	-147.7	250.6	-135.0	0.00	0.00	0.00
3,100.0	8.65	120.51	3,077.7	1,609.60	-155.3	263.5	-142.0	0.00	0.00	0.00
3,200.0	8.65	120.51	3,176.6	1,510.74	-162.9	276.5	-148.9	0.00	0.00	0.00
3,300.0	8.65	120.51	3,275.4	1,411.88	-170.6	289.4	-155.9	0.00	0.00	0.00
3,400.0	8.65	120.51	3,374.3	1,313.01	-178.2	302.4	-162.9	0.00	0.00	0.00
3,500.0	8.65	120.51	3,473.1	1,214.15	-185.8	315.3	-169.9	0.00	0.00	0.00
3,600.0	8.65	120.51	3,572.0	1,115.29	-193.5	328.3	-176.9	0.00	0.00	0.00
3,700.0	8.65	120.51	3,670.9	1,016.42	-201.1	341.2	-183.8	0.00	0.00	0.00
3,800.0	8.65	120.51	3,769.7	917.56	-208.7	354.2	-190.8	0.00	0.00	0.00
3,900.0	8.65	120.51	3,868.6	818.70	-216.4	367.1	-197.8	0.00	0.00	0.00
4,000.0	8.65	120.51	3,967.5	719.84	-224.0	380.1	-204.8	0.00	0.00	0.00
4,100.0	8.65	120.51	4,066.3	620.97	-231.6	393.1	-211.7	0.00	0.00	0.00
4,200.0	8.65	120.51	4,165.2	522.11	-239.3	406.0	-218.7	0.00	0.00	0.00
4,300.0	8.65	120.51	4,264.1	423.25	-246.9	419.0	-225.7	0.00	0.00	0.00
4,400.0	8.65	120.51	4,362.9	324.38	-254.5	431.9	-232.7	0.00	0.00	0.00
4,500.0	8.65	120.51	4,461.8	225.52	-262.2	444.9	-239.7	0.00	0.00	0.00
4,600.0	8.65	120.51	4,560.6	126.66	-269.8	457.8	-246.6	0.00	0.00	0.00
4,700.0	8.65	120.51	4,659.5	27.79	-277.4	470.8	-253.6	0.00	0.00	0.00
4,800.0	8.65	120.51	4,758.4	-71.07	-285.1	483.7	-260.6	0.00	0.00	0.00
4,900.0	8.65	120.51	4,857.2	-169.93	-292.7	496.7	-267.6	0.00	0.00	0.00

Planning Report



Database:	EDM 5000.1 Single User Db	Local Co-ordinate Reference:	Well STATE ANTELOPE 24-1-36XRLNB
Company:	BONANZA CREEK ENERGY INC.	TVD Reference:	KB-EST @ 4687.3usft (Original Well Elev)
Project:	WELD COUNTY, COLORADO (NAD 83)	MD Reference:	KB-EST @ 4687.3usft (Original Well Elev)
Site:	SE SW SEC. 1 T5N R62W 6th P.M.	North Reference:	True
Well:	STATE ANTELOPE 24-1-36XRLNB	Survey Calculation Method:	Minimum Curvature
Wellbore:	ORIGINAL WELLBORE		
Design:	PROPOSAL #1		

Planned Survey										
MD (usft)	Inc (°)	Azi (°)	TVD (usft)	SS (usft)	+N/-S (usft)	+E/-W (usft)	Vertical Section (usft)	Dogleg Rate (°/100usft)	Build Rate (°/100usft)	Turn Rate (°/100usft)
5,000.0	8.65	120.51	4,956.1	-268.80	-300.3	509.6	-274.6	0.00	0.00	0.00
5,100.0	8.65	120.51	5,055.0	-367.66	-308.0	522.6	-281.5	0.00	0.00	0.00
5,200.0	8.65	120.51	5,153.8	-466.52	-315.6	535.5	-288.5	0.00	0.00	0.00
END OF TANGENT										
5,270.2	8.65	120.51	5,223.3	-535.95	-321.0	544.6	-293.4	0.00	0.00	0.00
5,300.0	8.05	120.51	5,252.7	-565.41	-323.2	548.4	-295.4	2.00	-2.00	0.00
5,400.0	6.05	120.51	5,351.9	-664.65	-329.4	558.9	-301.1	2.00	-2.00	0.00
5,500.0	4.05	120.51	5,451.6	-764.25	-333.9	566.5	-305.2	2.00	-2.00	0.00
5,600.0	2.05	120.51	5,551.4	-864.11	-336.6	571.1	-307.7	2.00	-2.00	0.00
5,700.0	0.05	120.51	5,651.4	-964.08	-337.5	572.7	-308.5	2.00	-2.00	0.00
EOD TO VERTICAL										
5,702.6	0.00	0.00	5,654.0	-966.70	-337.5	572.7	-308.5	2.00	-2.00	0.00
KOP (12°/100ft BUR)										
5,732.6	0.00	0.00	5,684.0	-996.70	-337.5	572.7	-308.5	0.00	0.00	0.00
5,800.0	8.09	359.48	5,751.2	-1,063.86	-332.8	572.7	-303.8	12.00	12.00	0.00
5,900.0	20.09	359.48	5,848.0	-1,160.68	-308.5	572.4	-279.5	12.00	12.00	0.00
6,000.0	32.09	359.48	5,937.6	-1,250.33	-264.6	572.0	-235.7	12.00	12.00	0.00
6,100.0	44.09	359.48	6,016.2	-1,328.89	-203.0	571.5	-174.3	12.00	12.00	0.00
6,200.0	56.09	359.48	6,080.2	-1,392.94	-126.4	570.8	-97.8	12.00	12.00	0.00
6,300.0	68.09	359.48	6,127.0	-1,439.67	-38.2	570.0	-9.8	12.00	12.00	0.00
START OF TANGENT										
6,357.6	75.00	359.48	6,145.2	-1,457.90	16.4	569.5	44.7	12.00	12.00	0.00
6,400.0	75.00	359.48	6,156.2	-1,468.87	57.3	569.1	85.6	0.00	0.00	0.00
END OF TANGENT										
6,457.6	75.00	359.48	6,171.1	-1,483.78	113.0	568.6	141.2	0.00	0.00	0.00
6,500.0	80.09	359.48	6,180.2	-1,492.92	154.3	568.2	182.5	12.00	12.00	0.00
7" ICP - STATE ANT 24-1-36XRLNB *NEW*										
6,582.6	90.00	359.48	6,187.3	-1,500.05	236.5	567.5	264.5	12.00	12.00	0.00
6,600.0	90.00	359.48	6,187.3	-1,500.05	253.9	567.3	281.9	0.00	0.00	0.00
6,700.0	90.00	359.48	6,187.3	-1,500.05	353.9	566.4	381.7	0.00	0.00	0.00
6,800.0	90.00	359.48	6,187.3	-1,500.05	453.9	565.5	481.5	0.00	0.00	0.00
6,900.0	90.00	359.48	6,187.3	-1,500.05	553.9	564.6	581.4	0.00	0.00	0.00
7,000.0	90.00	359.48	6,187.3	-1,500.05	653.9	563.7	681.2	0.00	0.00	0.00
7,100.0	90.00	359.48	6,187.3	-1,500.05	753.9	562.8	781.0	0.00	0.00	0.00
7,200.0	90.00	359.48	6,187.3	-1,500.05	853.9	561.9	880.8	0.00	0.00	0.00
7,300.0	90.00	359.48	6,187.3	-1,500.05	953.9	561.0	980.7	0.00	0.00	0.00
7,400.0	90.00	359.48	6,187.3	-1,500.05	1,053.9	560.1	1,080.5	0.00	0.00	0.00
7,500.0	90.00	359.48	6,187.3	-1,500.05	1,153.9	559.2	1,180.3	0.00	0.00	0.00
7,600.0	90.00	359.48	6,187.3	-1,500.05	1,253.9	558.2	1,280.1	0.00	0.00	0.00
7,700.0	90.00	359.48	6,187.3	-1,500.05	1,353.9	557.3	1,380.0	0.00	0.00	0.00
7,800.0	90.00	359.48	6,187.3	-1,500.05	1,453.9	556.4	1,479.8	0.00	0.00	0.00
7,900.0	90.00	359.48	6,187.3	-1,500.05	1,553.9	555.5	1,579.6	0.00	0.00	0.00
8,000.0	90.00	359.48	6,187.3	-1,500.05	1,653.9	554.6	1,679.4	0.00	0.00	0.00
8,100.0	90.00	359.48	6,187.3	-1,500.05	1,753.9	553.7	1,779.3	0.00	0.00	0.00
8,200.0	90.00	359.48	6,187.3	-1,500.05	1,853.9	552.8	1,879.1	0.00	0.00	0.00
8,300.0	90.00	359.48	6,187.3	-1,500.05	1,953.8	551.9	1,978.9	0.00	0.00	0.00
8,400.0	90.00	359.48	6,187.3	-1,500.04	2,053.8	551.0	2,078.8	0.00	0.00	0.00
8,500.0	90.00	359.48	6,187.3	-1,500.04	2,153.8	550.1	2,178.6	0.00	0.00	0.00
8,600.0	90.00	359.48	6,187.3	-1,500.04	2,253.8	549.2	2,278.4	0.00	0.00	0.00
8,700.0	90.00	359.48	6,187.3	-1,500.04	2,353.8	548.2	2,378.2	0.00	0.00	0.00
8,800.0	90.00	359.48	6,187.3	-1,500.04	2,453.8	547.3	2,478.1	0.00	0.00	0.00
8,900.0	90.00	359.48	6,187.3	-1,500.04	2,553.8	546.4	2,577.9	0.00	0.00	0.00
9,000.0	90.00	359.48	6,187.3	-1,500.04	2,653.8	545.5	2,677.7	0.00	0.00	0.00

Planning Report



Database:	EDM 5000.1 Single User Db	Local Co-ordinate Reference:	Well STATE ANTELOPE 24-1-36XRLNB
Company:	BONANZA CREEK ENERGY INC.	TVD Reference:	KB-EST @ 4687.3usft (Original Well Elev)
Project:	WELD COUNTY, COLORADO (NAD 83)	MD Reference:	KB-EST @ 4687.3usft (Original Well Elev)
Site:	SE SW SEC. 1 T5N R62W 6th P.M.	North Reference:	True
Well:	STATE ANTELOPE 24-1-36XRLNB	Survey Calculation Method:	Minimum Curvature
Wellbore:	ORIGINAL WELLBORE		
Design:	PROPOSAL #1		

Planned Survey										
MD (usft)	Inc (°)	Azi (°)	TVD (usft)	SS (usft)	+N/-S (usft)	+E/-W (usft)	Vertical Section (usft)	Dogleg Rate (°/100usft)	Build Rate (°/100usft)	Turn Rate (°/100usft)
9,100.0	90.00	359.48	6,187.3	-1,500.04	2,753.8	544.6	2,777.5	0.00	0.00	0.00
9,200.0	90.00	359.48	6,187.3	-1,500.04	2,853.8	543.7	2,877.4	0.00	0.00	0.00
9,300.0	90.00	359.48	6,187.3	-1,500.04	2,953.8	542.8	2,977.2	0.00	0.00	0.00
9,400.0	90.00	359.48	6,187.3	-1,500.04	3,053.8	541.9	3,077.0	0.00	0.00	0.00
9,500.0	90.00	359.48	6,187.3	-1,500.04	3,153.8	541.0	3,176.8	0.00	0.00	0.00
9,600.0	90.00	359.48	6,187.3	-1,500.04	3,253.8	540.0	3,276.7	0.00	0.00	0.00
9,700.0	90.00	359.48	6,187.3	-1,500.04	3,353.8	539.1	3,376.5	0.00	0.00	0.00
9,800.0	90.00	359.48	6,187.3	-1,500.04	3,453.8	538.2	3,476.3	0.00	0.00	0.00
9,900.0	90.00	359.48	6,187.3	-1,500.04	3,553.8	537.3	3,576.1	0.00	0.00	0.00
10,000.0	90.00	359.48	6,187.3	-1,500.04	3,653.8	536.4	3,676.0	0.00	0.00	0.00
10,100.0	90.00	359.48	6,187.3	-1,500.04	3,753.8	535.5	3,775.8	0.00	0.00	0.00
10,200.0	90.00	359.48	6,187.3	-1,500.04	3,853.8	534.6	3,875.6	0.00	0.00	0.00
10,300.0	90.00	359.48	6,187.3	-1,500.04	3,953.8	533.7	3,975.5	0.00	0.00	0.00
10,400.0	90.00	359.48	6,187.3	-1,500.04	4,053.8	532.7	4,075.3	0.00	0.00	0.00
10,500.0	90.00	359.48	6,187.3	-1,500.04	4,153.8	531.8	4,175.1	0.00	0.00	0.00
10,600.0	90.00	359.48	6,187.3	-1,500.04	4,253.8	530.9	4,274.9	0.00	0.00	0.00
10,700.0	90.00	359.48	6,187.3	-1,500.04	4,353.7	530.0	4,374.8	0.00	0.00	0.00
10,800.0	90.00	359.48	6,187.3	-1,500.04	4,453.7	529.1	4,474.6	0.00	0.00	0.00
10,900.0	90.00	359.48	6,187.3	-1,500.04	4,553.7	528.2	4,574.4	0.00	0.00	0.00
11,000.0	90.00	359.48	6,187.3	-1,500.04	4,653.7	527.3	4,674.2	0.00	0.00	0.00
11,100.0	90.00	359.48	6,187.3	-1,500.04	4,753.7	526.4	4,774.1	0.00	0.00	0.00
11,200.0	90.00	359.48	6,187.3	-1,500.04	4,853.7	525.4	4,873.9	0.00	0.00	0.00
11,300.0	90.00	359.48	6,187.3	-1,500.03	4,953.7	524.5	4,973.7	0.00	0.00	0.00
11,400.0	90.00	359.48	6,187.3	-1,500.03	5,053.7	523.6	5,073.5	0.00	0.00	0.00
11,500.0	90.00	359.48	6,187.3	-1,500.03	5,153.7	522.7	5,173.4	0.00	0.00	0.00
11,600.0	90.00	359.48	6,187.3	-1,500.03	5,253.7	521.8	5,273.2	0.00	0.00	0.00
11,700.0	90.00	359.48	6,187.3	-1,500.03	5,353.7	520.9	5,373.0	0.00	0.00	0.00
11,800.0	90.00	359.48	6,187.3	-1,500.03	5,453.7	520.0	5,472.8	0.00	0.00	0.00
11,900.0	90.00	359.48	6,187.3	-1,500.03	5,553.7	519.0	5,572.7	0.00	0.00	0.00
12,000.0	90.00	359.48	6,187.3	-1,500.03	5,653.7	518.1	5,672.5	0.00	0.00	0.00
12,100.0	90.00	359.48	6,187.3	-1,500.03	5,753.7	517.2	5,772.3	0.00	0.00	0.00
12,200.0	90.00	359.48	6,187.3	-1,500.03	5,853.7	516.3	5,872.1	0.00	0.00	0.00
12,300.0	90.00	359.48	6,187.3	-1,500.03	5,953.7	515.4	5,972.0	0.00	0.00	0.00
12,400.0	90.00	359.48	6,187.3	-1,500.03	6,053.7	514.5	6,071.8	0.00	0.00	0.00
12,500.0	90.00	359.48	6,187.3	-1,500.03	6,153.7	513.6	6,171.6	0.00	0.00	0.00
12,600.0	90.00	359.48	6,187.3	-1,500.03	6,253.7	512.6	6,271.4	0.00	0.00	0.00
12,700.0	90.00	359.48	6,187.3	-1,500.03	6,353.7	511.7	6,371.3	0.00	0.00	0.00
12,800.0	90.00	359.48	6,187.3	-1,500.03	6,453.7	510.8	6,471.1	0.00	0.00	0.00
12,900.0	90.00	359.48	6,187.3	-1,500.03	6,553.7	509.9	6,570.9	0.00	0.00	0.00
13,000.0	90.00	359.48	6,187.3	-1,500.03	6,653.7	509.0	6,670.8	0.00	0.00	0.00
13,100.0	90.00	359.47	6,187.3	-1,500.02	6,753.6	508.1	6,770.6	0.00	0.00	0.00
13,200.0	90.00	359.47	6,187.3	-1,500.02	6,853.6	507.1	6,870.4	0.00	0.00	0.00
13,300.0	90.00	359.47	6,187.3	-1,500.02	6,953.6	506.2	6,970.2	0.00	0.00	0.00
13,400.0	90.00	359.47	6,187.3	-1,500.02	7,053.6	505.3	7,070.1	0.00	0.00	0.00
13,500.0	90.00	359.47	6,187.3	-1,500.02	7,153.6	504.4	7,169.9	0.00	0.00	0.00
13,600.0	90.00	359.47	6,187.3	-1,500.02	7,253.6	503.5	7,269.7	0.00	0.00	0.00
13,700.0	90.00	359.47	6,187.3	-1,500.02	7,353.6	502.6	7,369.5	0.00	0.00	0.00
13,800.0	90.00	359.47	6,187.3	-1,500.02	7,453.6	501.6	7,469.4	0.00	0.00	0.00
13,900.0	90.00	359.47	6,187.3	-1,500.02	7,553.6	500.7	7,569.2	0.00	0.00	0.00
14,000.0	90.00	359.47	6,187.3	-1,500.02	7,653.6	499.8	7,669.0	0.00	0.00	0.00
14,100.0	90.00	359.47	6,187.3	-1,500.02	7,753.6	498.9	7,768.8	0.00	0.00	0.00
14,200.0	90.00	359.47	6,187.3	-1,500.02	7,853.6	498.0	7,868.7	0.00	0.00	0.00
14,300.0	90.00	359.47	6,187.3	-1,500.02	7,953.6	497.0	7,968.5	0.00	0.00	0.00
14,400.0	90.00	359.47	6,187.3	-1,500.01	8,053.6	496.1	8,068.3	0.00	0.00	0.00

Planning Report



Database:	EDM 5000.1 Single User Db	Local Co-ordinate Reference:	Well STATE ANTELOPE 24-1-36XRLNB
Company:	BONANZA CREEK ENERGY INC.	TVD Reference:	KB-EST @ 4687.3usft (Original Well Elev)
Project:	WELD COUNTY, COLORADO (NAD 83)	MD Reference:	KB-EST @ 4687.3usft (Original Well Elev)
Site:	SE SW SEC. 1 T5N R62W 6th P.M.	North Reference:	True
Well:	STATE ANTELOPE 24-1-36XRLNB	Survey Calculation Method:	Minimum Curvature
Wellbore:	ORIGINAL WELLBORE		
Design:	PROPOSAL #1		

Planned Survey										
MD (usft)	Inc (°)	Azi (°)	TVD (usft)	SS (usft)	+N/-S (usft)	+E/-W (usft)	Vertical Section (usft)	Dogleg Rate (°/100usft)	Build Rate (°/100usft)	Turn Rate (°/100usft)
14,500.0	90.00	359.47	6,187.3	-1,500.01	8,153.6	495.2	8,168.1	0.00	0.00	0.00
14,600.0	90.00	359.47	6,187.3	-1,500.01	8,253.6	494.3	8,268.0	0.00	0.00	0.00
14,700.0	90.00	359.47	6,187.3	-1,500.01	8,353.6	493.4	8,367.8	0.00	0.00	0.00
14,800.0	90.00	359.47	6,187.3	-1,500.01	8,453.6	492.5	8,467.6	0.00	0.00	0.00
14,900.0	90.00	359.47	6,187.3	-1,500.01	8,553.6	491.5	8,567.4	0.00	0.00	0.00
15,000.0	90.00	359.47	6,187.3	-1,500.01	8,653.6	490.6	8,667.3	0.00	0.00	0.00
15,100.0	90.00	359.47	6,187.3	-1,500.01	8,753.6	489.7	8,767.1	0.00	0.00	0.00
15,200.0	90.00	359.47	6,187.3	-1,500.01	8,853.6	488.8	8,866.9	0.00	0.00	0.00
15,300.0	90.00	359.47	6,187.3	-1,500.01	8,953.6	487.9	8,966.7	0.00	0.00	0.00
15,400.0	90.00	359.47	6,187.3	-1,500.01	9,053.5	486.9	9,066.6	0.00	0.00	0.00
15,500.0	90.00	359.47	6,187.3	-1,500.00	9,153.5	486.0	9,166.4	0.00	0.00	0.00
15,600.0	90.00	359.47	6,187.3	-1,500.00	9,253.5	485.1	9,266.2	0.00	0.00	0.00
15,700.0	90.00	359.47	6,187.3	-1,500.00	9,353.5	484.2	9,366.0	0.00	0.00	0.00
15,800.0	90.00	359.47	6,187.3	-1,500.00	9,453.5	483.3	9,465.9	0.00	0.00	0.00
15,900.0	90.00	359.47	6,187.3	-1,500.00	9,553.5	482.3	9,565.7	0.00	0.00	0.00
BHL - STATE ANT 24-1-36XRLNB										
15,993.5	90.00	359.47	6,187.3	-1,500.00	9,647.0	481.5	9,659.1	0.00	0.00	0.00

Plan Annotations				
MD (usft)	TVD (usft)	Local Coordinates		Comment
		+N/-S (usft)	+E/-W (usft)	
850.0	850.0	0.0	0.0	START NUDDGE (2°/100ft BUR)
1,282.4	1,280.7	-16.5	28.1	EOB TO 8.65° INC
5,270.2	5,223.3	-321.0	544.6	END OF TANGENT
5,702.6	5,654.0	-337.5	572.7	EOD TO VERTICAL
5,732.6	5,684.0	-337.5	572.7	KOP (12°/100ft BUR)
6,357.6	6,145.2	16.4	569.5	START OF TANGENT
6,457.6	6,171.1	113.0	568.6	END OF TANGENT
6,582.6	6,187.3	236.5	567.5	7" ICP - STATE ANT 24-1-36XRLNB *NEW*
15,993.5	6,187.3	9,647.0	481.5	BHL - STATE ANT 24-1-36XRLNB