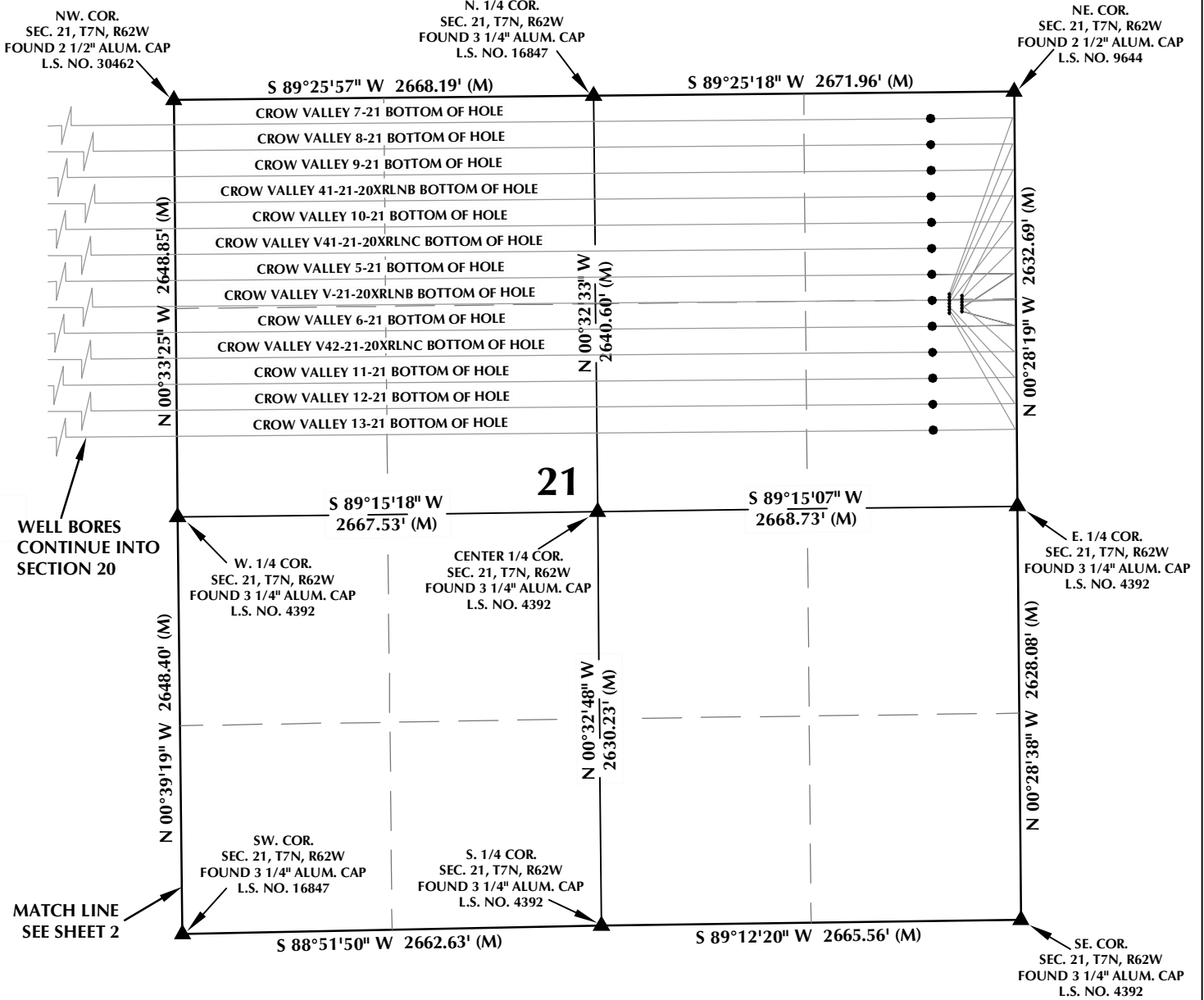
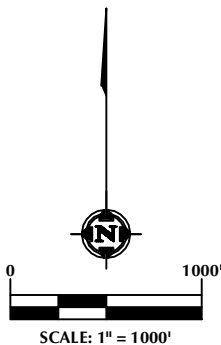


CROW VALLEY V-21 T7N, R62W



NOTES:

- ▲ INDICATES FOUND SECTION CORNER
- INDICATES CALCULATED CORNER
- BASIS OF BEARING DERIVED FROM COLORADO COORDINATE SYSTEM 1983 NORTH ZONE UNLESS OTHERWISE NOTED.
- ALL MEASURED DISTANCES ARE GRID. COMBINED SCALE FACTOR: .99974052
- WELL FOOTAGES ARE MEASURED AT RIGHT ANGLES TO THE SECTION LINES.



WELL PAD - CROW VALLEY V-21

MULTI-WELL PLAN
 CROW VALLEY 41-21-20XRLNB,
 CROW VALLEY V41-21-20XRLNC,
 CROW VALLEY V-21-20XRLNB &
 CROW VALLEY V42-21-20XRLNC
 LOCATED IN SECTIONS 20 & 21
 T7N, R62W, 6TH P.M.
 WELD COUNTY, COLORADO


BONANZA CREEK
 410 17th Street, Suite 1400
 Denver, Colorado 80202



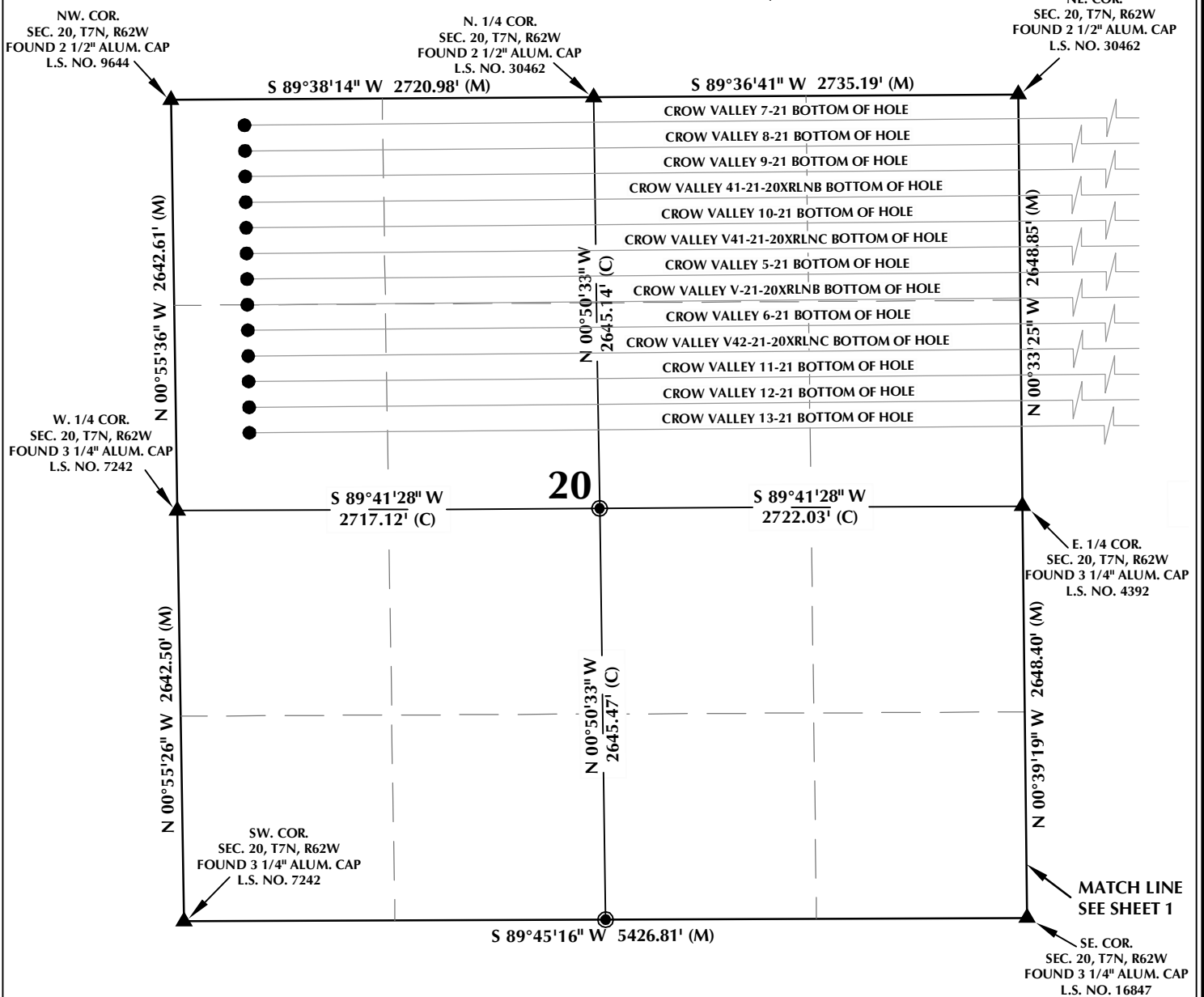
CONSULTING, LLC

SHERIDAN OFFICE 2155 North Main Street
 Sheridan, Wyoming 82801
 Phone 307-674-0609

LOVELAND OFFICE 1635 Foxtrail Drive, Suite 204
 Loveland, Colorado 80538
 Phone 970-776-4331

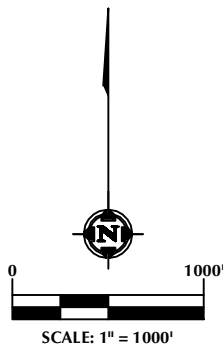
DRAFTED BY:	LMO	CHECKED BY:	BJR	SHEET NO:
DATE DRAFTED:	9/5/14	DATE SURVEYED:	7/29/14	1A
REVISED:		FILE NAME:	14-61	1A OF 3

CROW VALLEY V-21 T7N, R62W



NOTES:

- ▲ INDICATES FOUND SECTION CORNER
- INDICATES CALCULATED CORNER
- BASIS OF BEARING DERIVED FROM COLORADO COORDINATE SYSTEM 1983 NORTH ZONE UNLESS OTHERWISE NOTED.
- ALL MEASURED DISTANCES ARE GRID.
COMBINED SCALE FACTOR: .99974052
- WELL FOOTAGES ARE MEASURED AT RIGHT ANGLES TO THE SECTION LINES.



WELL PAD - CROW VALLEY V-21

MULTI-WELL PLAN
 CROW VALLEY 41-21-20XRLNB,
 CROW VALLEY V41-21-20XRLNC,
 CROW VALLEY V-21-20XRLNB &
 CROW VALLEY V42-21-20XRLNC
 LOCATED IN SECTIONS 20 & 21
 T7N, R62W, 6TH P.M.
 WELD COUNTY, COLORADO

BONANZA CREEK
 410 17th Street, Suite 1400
 Denver, Colorado 80202

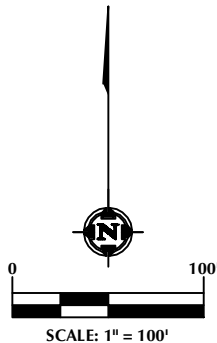
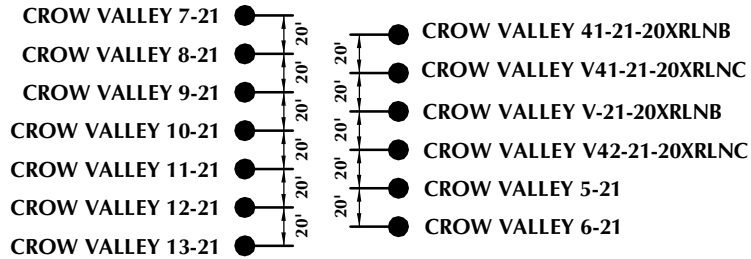


CONSULTING, LLC

SHERIDAN OFFICE 2155 North Main Street Sheridan, Wyoming 82801 Phone 307-674-0609
 LOVELAND OFFICE 1635 Foxtrail Drive, Suite 204 Loveland, Colorado 80538 Phone 970-776-4331

DRAFTED BY: LMO	CHECKED BY: BJR	SHEET NO: 1B 1B OF 3
DATE DRAFTED: 9/5/14	DATE SURVEYED: 7/29/14	
REVISED:	FILE NAME: 14-61	

CROW VALLEY V-21 T7N, R62W



NOTES:

1. ▲ INDICATES FOUND SECTION CORNER
2. ● INDICATES CALCULATED CORNER
3. BASIS OF BEARING DERIVED FROM COLORADO COORDINATE SYSTEM 1983 NORTH ZONE UNLESS OTHERWISE NOTED.
4. ALL MEASURED DISTANCES ARE GRID.
COMBINED SCALE FACTOR: .99974052
5. WELL FOOTAGES ARE MEASURED AT RIGHT ANGLES TO THE SECTION LINES.

WELL PAD - CROW VALLEY V-21

MULTI-WELL PLAN
 CROW VALLEY 41-21-20XRLNB,
 CROW VALLEY V41-21-20XRLNC,
 CROW VALLEY V-21-20XRLNB &
 CROW VALLEY V42-21-20XRLNC
 LOCATED IN SECTIONS 20 & 21
 T7N, R62W, 6TH P.M.
 WELD COUNTY, COLORADO



**BONANZA
 CREEK**
 410 17th Street, Suite 1400
 Denver, Colorado 80202



CONSULTING, LLC

SHERIDAN OFFICE 2155 North Main Street Sheridan, Wyoming 82801 Phone 307-674-0609
 LOVELAND OFFICE 1635 Foxtrail Drive, Suite 204 Loveland, Colorado 80538 Phone 970-776-4331

DRAFTED BY:	LMO	CHECKED BY:	BJR	SHEET NO: 2 2 OF 3
DATE DRAFTED:	9/5/14	DATE SURVEYED:	7/29/14	
REVISED:		FILE NAME:	14-61	

CROW VALLEY V-21

T7N, R62W

WELL NOTES:

- | | |
|--|---|
| <p>1. CROW VALLEY 41-21-20XRLNB
SURFACE: 1293' FNL, 341' FEL
LATITUDE: 40.563234°
LONGITUDE: -104.318704°</p> <p>2. CROW VALLEY V41-21-20XRLNC
SURFACE: 1313' FNL, 341' FEL
LATITUDE: 40.563179°
LONGITUDE: -104.318705°</p> <p>3. CROW VALLEY V-21-20XRLNB
SURFACE: 1333 FNL, 341' FEL
LATITUDE: 40.563124°
LONGITUDE: -104.318706°</p> <p>4. CROW VALLEY V42-21-20XRLNC
SURFACE: 1353' FNL, 341' FEL
LATITUDE: 40.563069°
LONGITUDE: -104.318707°</p> <p>5. CROW VALLEY 5-21
SURFACE: 1373' FNL, 341' FEL
LATITUDE: 40.563014°
LONGITUDE: -104.318708°</p> <p>6. CROW VALLEY 6-21
SURFACE: 1393' FNL, 342' FEL
LATITUDE: 40.562959°
LONGITUDE: -104.318709°</p> <p>7. CROW VALLEY 7-21
SURFACE: 1282' FNL, 421' FEL
LATITUDE: 40.563264°
LONGITUDE: -104.318991°</p> | <p>8. CROW VALLEY 8-21
SURFACE: 1302' FNL, 421' FEL
LATITUDE: 40.563209°
LONGITUDE: -104.318992°</p> <p>9. CROW VALLEY 9-21
SURFACE: 1322' FNL, 421' FEL
LATITUDE: 40.563154°
LONGITUDE: -104.318993°</p> <p>10. CROW VALLEY 10-21
SURFACE: 1342' FNL, 421' FEL
LATITUDE: 40.563099°
LONGITUDE: -104.318994°</p> <p>11. CROW VALLEY 11-21
SURFACE: 1362' FNL, 421' FEL
LATITUDE: 40.563044°
LONGITUDE: -104.318995°</p> <p>12. CROW VALLEY 12-21
SURFACE: 1382' FNL, 422' FEL
LATITUDE: 40.562990°
LONGITUDE: -104.318996°</p> <p>13. CROW VALLEY 13-21
SURFACE: 1402' FNL, 422' FEL
LATITUDE: 40.562935°
LONGITUDE: -104.318997°</p> |
|--|---|

WELL PATH TRAJECTORIES

- | | |
|---|---|
| <p>1. CROW VALLEY 41-21-20XRLNB
ENTRY POINT TO BOTTOM OF HOLE:
S89°31'37"W, 9790'</p> <p>2. CROW VALLEY V41-21-20XRLNC
ENTRY POINT TO BOTTOM OF HOLE:
S89°31'37"W, 9787'</p> <p>3. CROW VALLEY V-21-20XRLNB
ENTRY POINT TO BOTTOM OF HOLE:
S89°31'37"W, 9785'</p> <p>4. CROW VALLEY V42-21-20XRLNC
ENTRY POINT TO BOTTOM OF HOLE:
S89°31'37"W, 9782'</p> <p>5. CROW VALLEY 5-21
ENTRY POINT TO BOTTOM OF HOLE:
S89°31'37"W, 9786'</p> <p>6. CROW VALLEY 6-21
ENTRY POINT TO BOTTOM OF HOLE:
S89°31'37"W, 9783'</p> <p>7. CROW VALLEY 7-21
ENTRY POINT TO BOTTOM OF HOLE:
S89°31'38"W, 9794'</p> | <p>8. CROW VALLEY 8-21
ENTRY POINT TO BOTTOM OF HOLE:
S89°31'37"W, 9793'</p> <p>9. CROW VALLEY 9-21
ENTRY POINT TO BOTTOM OF HOLE:
S89°31'37"W, 9791'</p> <p>10. CROW VALLEY 10-21
ENTRY POINT TO BOTTOM OF HOLE:
S89°31'37"W, 9789'</p> <p>11. CROW VALLEY 11-21
ENTRY POINT TO BOTTOM OF HOLE:
S89°31'37"W, 9781'</p> <p>12. CROW VALLEY 12-21
ENTRY POINT TO BOTTOM OF HOLE:
S89°31'37"W, 9780'</p> <p>13. CROW VALLEY 13-21
ENTRY POINT TO BOTTOM OF HOLE:
S89°31'37"W, 9778'</p> |
|---|---|

WELL PAD - CROW VALLEY V-21

MULTI-WELL PLAN
CROW VALLEY 41-21-20XRLNB,
CROW VALLEY V41-21-20XRLNC,
CROW VALLEY V-21-20XRLNB &
CROW VALLEY V42-21-20XRLNC
LOCATED IN SECTIONS 20 & 21
T7N, R62W, 6TH P.M.
WELD COUNTY, COLORADO

 **BONANZA
CREEK**
410 17th Street, Suite 1400
Denver, Colorado 80202



CONSULTING, LLC

<p>SHERIDAN OFFICE 2155 North Main Street Sheridan, Wyoming 82801 Phone 307-674-0609</p>	<p>LOVELAND OFFICE 1635 Foxtrail Drive, Suite 204 Loveland, Colorado 80538 Phone 970-776-4331</p>
---	--

DRAFTED BY:	LMO	CHECKED BY:	BJR	SHEET NO: 3 3 OF 3
DATE DRAFTED:	9/5/14	DATE SURVEYED:	7/29/14	
REVISED:		FILE NAME:	14-61	