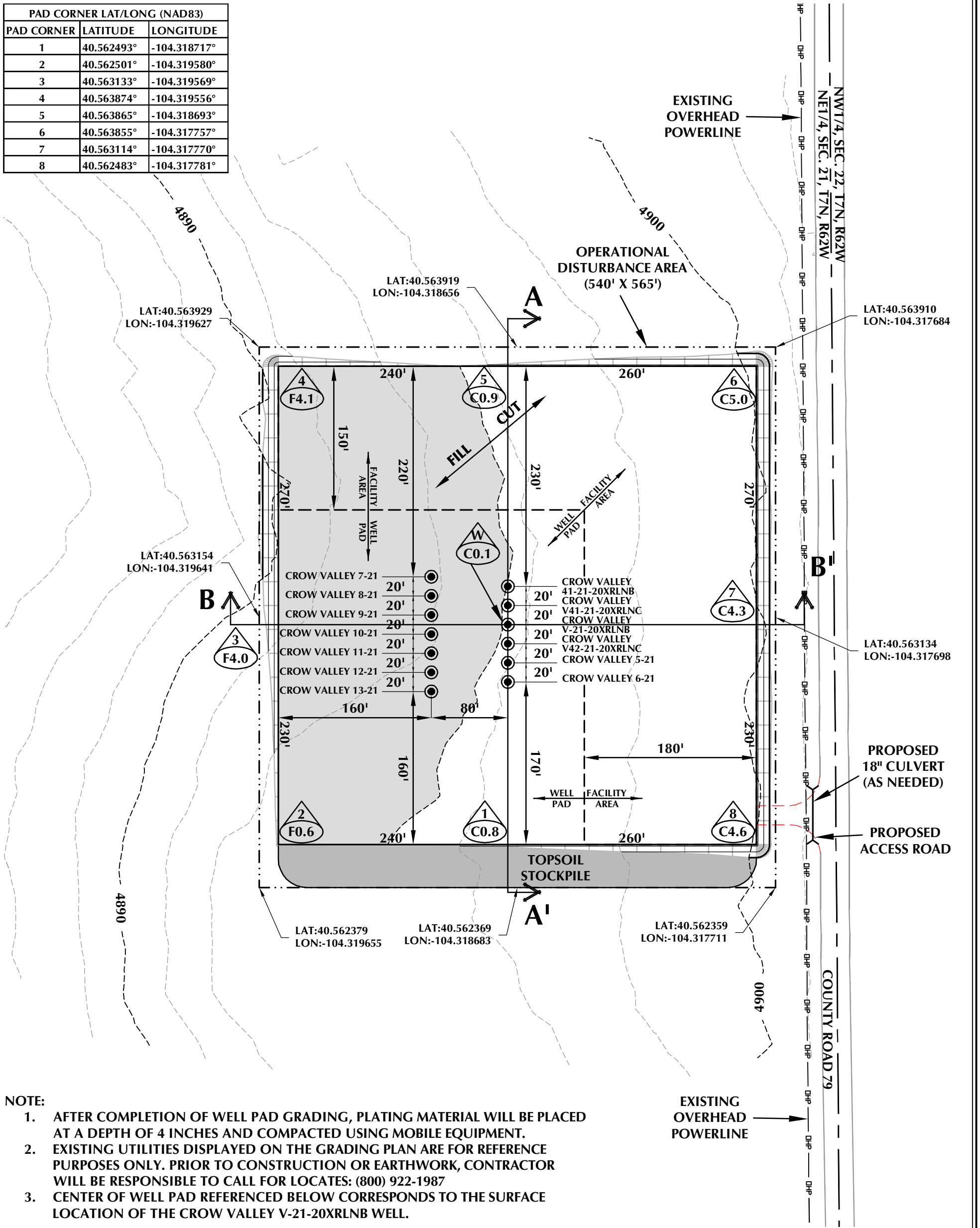


PAD CORNER LAT/LONG (NAD83)		
PAD CORNER	LATITUDE	LONGITUDE
1	40.562493°	-104.318717°
2	40.562501°	-104.319580°
3	40.563133°	-104.319569°
4	40.563874°	-104.319556°
5	40.563865°	-104.318693°
6	40.563855°	-104.317757°
7	40.563114°	-104.317770°
8	40.562483°	-104.317781°



- NOTE:**
- AFTER COMPLETION OF WELL PAD GRADING, PLATING MATERIAL WILL BE PLACED AT A DEPTH OF 4 INCHES AND COMPACTED USING MOBILE EQUIPMENT.
 - EXISTING UTILITIES DISPLAYED ON THE GRADING PLAN ARE FOR REFERENCE PURPOSES ONLY. PRIOR TO CONSTRUCTION OR EARTHWORK, CONTRACTOR WILL BE RESPONSIBLE TO CALL FOR LOCATES: (800) 922-1987
 - CENTER OF WELL PAD REFERENCED BELOW CORRESPONDS TO THE SURFACE LOCATION OF THE CROW VALLEY V-21-20XRLNB WELL.

WELL PAD - CROW VALLEY V-21 DESIGN SUMMARY

WELL PAD QUANTITIES AND DESIGN PARAMETERS

EXISTING GRADE @ CENTER OF WELL PAD = 4895.6'
 FINISHED GRADE ELEVATION = 4895.5'
 CUT SLOPES = 3:1
 FILL SLOPES = 3:1
 SHRINKAGE FACTOR = 1.10
 SWELL FACTOR = 1.00
 GRADED WELL PAD SURFACE AREA = 5.74 ACRES
 TOTAL WELL PAD AREA = 6.19 ACRES
 TOTAL DISTURBANCE AREA = 7.00 ACRES

WELL PAD QUANTITIES

TOTAL CUT FOR WELL PAD = 10,045 C.Y.
 TOTAL FILL FOR WELL PAD = 10,045 C.Y.
 TOPSOIL @ 6" DEPTH = 4,992 C.Y.
 EXCESS MATERIAL = 0 C.Y.

PLATING MATERIAL VOLUME
 TO BE ADDED TO WELL PAD = 3,090 C.Y.
 (ASSUMING 4 INCHES DEPTH)

WELL PAD LEGEND

- EXISTING WELL LOCATION
- PROPOSED WELL LOCATION
- EXISTING CONTOURS (2' INTERVAL)
- PROPOSED CONTOURS (2' INTERVAL)
- EPL — EXISTING PIPELINE
- PPL — PROPOSED PIPELINE
- EXISTING FENCE



HORIZONTAL 0 50' 100' 1" = 100'
 2' CONTOURS

SCALE: 1"=100' DATE: 9/16/14 SHEET NO: 1 OF 2

REVISED:

K:\BONANZA\CREEK\2014_61_CROW VALLEY_SEC_18_T7N_R62W\DWG\GRADING PLANS\CROW VALLEY V-21.dwg, 9/17/2014 4:07:17 PM, jake

WELL PAD - CROW VALLEY V-21

WELL PAD - GRADING PLAN
 CROW VALLEY 41-21-20XRLNB,
 CROW VALLEY V41-21-20XRLNC,
 CROW VALLEY V-21-20XRLNB &
 CROW VALLEY V42-21-20XRLNC
 LOCATED IN SECTION 21, T7N, R62W, 6TH P.M.
 WELD COUNTY, COLORADO

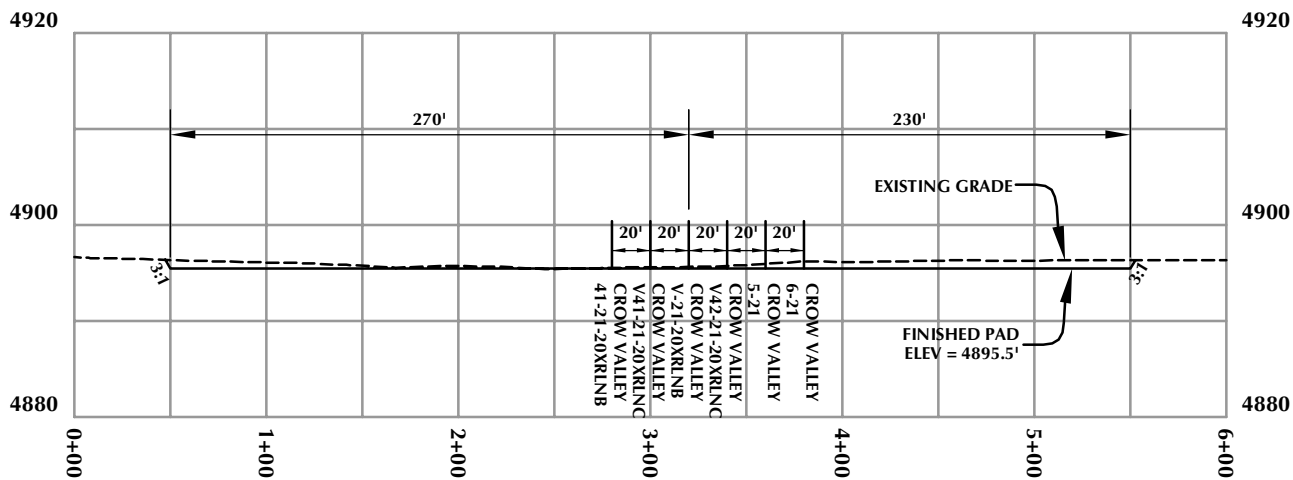
BONANZA CREEK
 410 17th Street, Suite 1400
 Denver, Colorado 80202

609 CONSULTING, LLC

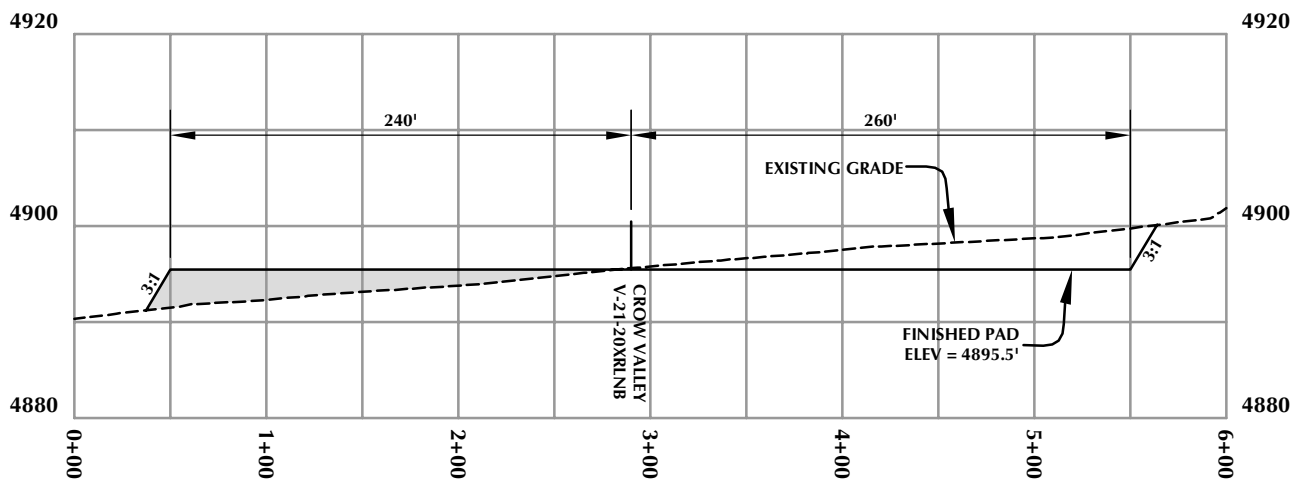
LOVELAND OFFICE
 1635 Foxtail Drive, Suite 204
 Loveland, Colorado 80538
 Phone 970-776-4331

SHERIDAN OFFICE
 2155 North Main Street
 Sheridan, Wyoming 82801
 Phone 307-674-0609

K:\BONANZA CREEK\2014_61_CROW VALLEY_SEC.18_T7N_R62W\DWG\GRADING PLANS\CROW VALLEY V-21.dwg, 9/17/2014 3:18:32 PM, jke



CROSS SECTION A-A'



CROSS SECTION B-B'

WELL PAD - CROW VALLEY V-21

WELL PAD - CROSS SECTIONS
 CROW VALLEY 41-21-20XRLNB,
 CROW VALLEY V41-21-20XRLNC,
 CROW VALLEY V-21-20XRLNB &
 CROW VALLEY V42-21-20XRLNC
 LOCATED IN SECTION 21, T7N, R62W, 6TH P.M.
 WELD COUNTY, COLORADO



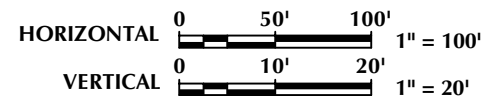
410 17th Street, Suite 1400
 Denver, Colorado 80202



CONSULTING, LLC

LOVELAND OFFICE
 1635 Foxtrail Drive, Suite 204
 Loveland, Colorado 80538
 Phone 970-776-4331

SHERIDAN OFFICE
 2155 North Main Street
 Sheridan, Wyoming 82801
 Phone 307-674-0609



Scale: 1"=100'

Date: 9/16/14

SHEET NO:

REVISED:

2

2 OF 2