

Whiting Oil and Gas Corporation

Weld County, CO

Sec. 26-T10N-R58W

Razor #26I-2313A

Plan D

Design: Actual Field Surveys

Sperry Drilling Services

Standard Report

01 July, 2014

Well Coordinates: 1,541,770.37 N, 3,463,639.95 E (40° 48' 30.68" N, 103° 49' 30.34" W)

Ground Level: 4,712.00 usft

Local Coordinate Origin:

Viewing Datum:

TVDs to System:

North Reference:

Unit System:

Geodetic Scale Factor Applied

Version: 5000.1 Build: 70

Centered on Well Razor #26I-2313A

KB 21' @ 4733.00usft (Frontier 26)

N

True

API - US Survey Feet - Custom

HALLIBURTON

Design Report for Razor #26I-2313A - Actual Field Surveys

Measured Depth (usft)	Inclination (°)	Azimuth (°)	Vertical Depth (usft)	+N/-S (usft)	+E/-W (usft)	Vertical Section (usft)	Dogleg Rate (°/100usft)
0.00	0.00	0.00	0.00	0.00	0.00	0.00	0.00
170.00	0.29	50.27	170.00	0.27	0.33	0.25	0.17
262.00	0.14	56.23	262.00	0.49	0.60	0.44	0.16
352.00	0.15	147.67	352.00	0.45	0.76	0.39	0.23
443.00	0.11	139.00	443.00	0.28	0.88	0.22	0.05
535.00	0.12	89.00	535.00	0.22	1.03	0.15	0.11
626.00	0.18	97.36	626.00	0.20	1.27	0.11	0.07
717.00	0.36	86.90	717.00	0.20	1.70	0.08	0.20
808.00	0.44	208.86	808.00	-0.09	1.81	-0.22	0.77
899.00	1.41	238.74	898.98	-0.98	0.69	-1.03	1.16
991.00	3.01	250.73	990.91	-2.37	-2.56	-2.18	1.80
1,082.00	3.91	256.24	1,081.75	-3.89	-7.83	-3.35	1.05
1,173.00	4.81	253.58	1,172.48	-5.71	-14.50	-4.70	1.01
1,265.00	4.50	266.96	1,264.18	-6.99	-21.81	-5.48	1.22
1,357.00	4.01	278.61	1,355.93	-6.70	-28.59	-4.73	1.08
1,448.00	4.22	284.52	1,446.69	-5.38	-34.98	-2.98	0.52
1,512.00	3.75	283.65	1,510.54	-4.30	-39.29	-1.60	0.74
1,636.00	4.80	277.92	1,634.19	-2.63	-48.37	0.69	0.91
1,727.00	2.77	275.32	1,724.99	-1.90	-54.33	1.82	2.24
1,818.00	4.23	232.84	1,815.83	-3.72	-59.20	0.34	3.16
1,909.00	4.50	242.64	1,906.57	-7.39	-65.04	-2.92	0.87
2,001.00	4.90	270.90	1,998.27	-8.99	-72.18	-4.03	2.53
2,091.00	4.31	277.02	2,087.98	-8.51	-79.38	-3.06	0.85
2,183.00	3.90	270.03	2,179.75	-8.09	-85.94	-2.19	0.70
2,274.00	3.83	273.07	2,270.54	-7.93	-92.07	-1.61	0.24
2,366.00	3.74	269.35	2,362.34	-7.80	-98.14	-1.06	0.28
2,457.00	3.88	266.69	2,453.14	-8.01	-104.18	-0.86	0.25
2,549.00	3.74	267.05	2,544.93	-8.34	-110.28	-0.77	0.15
2,641.00	3.81	261.88	2,636.73	-8.93	-116.30	-0.95	0.38
2,731.00	3.61	262.05	2,726.55	-9.74	-122.07	-1.36	0.22
2,823.00	3.66	259.20	2,818.36	-10.69	-127.82	-1.92	0.20
2,914.00	3.51	241.58	2,909.19	-12.56	-133.13	-3.42	1.22
3,005.00	4.21	241.48	2,999.98	-15.48	-138.51	-5.97	0.77
3,097.00	4.01	242.03	3,091.74	-18.60	-144.32	-8.68	0.22
3,188.00	5.62	241.31	3,182.42	-22.24	-151.04	-11.85	1.77
3,280.00	5.50	270.29	3,274.00	-24.38	-159.40	-13.41	3.02
3,371.00	5.49	274.99	3,364.59	-23.98	-168.10	-12.41	0.49
3,463.00	4.88	275.86	3,456.21	-23.19	-176.38	-11.07	0.67
3,555.00	4.79	277.27	3,547.88	-22.31	-184.08	-9.66	0.16
3,647.00	4.01	266.33	3,639.61	-22.03	-191.10	-8.90	1.24
3,738.00	3.71	271.95	3,730.40	-22.13	-197.22	-8.58	0.53
3,830.00	2.78	267.04	3,822.26	-22.15	-202.42	-8.24	1.05
3,922.00	3.12	262.29	3,914.13	-22.60	-207.13	-8.37	0.45
4,013.00	3.89	282.46	4,004.97	-22.26	-212.60	-7.66	1.58
4,105.00	3.62	278.70	4,096.77	-21.15	-218.52	-6.14	0.40
4,195.00	4.37	282.48	4,186.55	-19.98	-224.67	-4.55	0.88
4,286.00	3.79	284.33	4,277.32	-18.49	-230.97	-2.63	0.65
4,378.00	4.46	273.80	4,369.08	-17.50	-237.49	-1.20	1.10
4,469.00	4.86	261.56	4,459.78	-17.83	-244.83	-1.03	1.18
4,561.00	4.47	258.12	4,551.48	-19.14	-252.19	-1.83	0.52

Design Report for Razor #26I-2313A - Actual Field Surveys

Measured Depth (usft)	Inclination (°)	Azimuth (°)	Vertical Depth (usft)	+N/-S (usft)	+E/-W (usft)	Vertical Section (usft)	Dogleg Rate (°/100usft)
4,706.00	3.37	261.16	4,696.14	-20.96	-261.93	-2.98	0.77
4,747.00	2.12	246.95	4,737.09	-21.44	-263.82	-3.33	3.45
4,840.00	2.65	278.36	4,830.01	-21.80	-267.53	-3.43	1.49
4,935.00	1.89	308.33	4,924.94	-20.51	-270.93	-1.91	1.46
4,999.00	1.47	318.95	4,988.91	-19.23	-272.30	-0.55	0.81
5,031.00	1.72	325.30	5,020.90	-18.53	-272.84	0.19	0.96
5,063.00	2.26	269.22	5,052.88	-18.14	-273.75	0.64	6.03
5,094.00	2.07	303.87	5,083.86	-17.84	-274.83	1.01	4.20
5,126.00	2.72	327.20	5,115.84	-16.88	-275.72	2.03	3.62
5,157.00	4.84	348.29	5,146.77	-14.98	-276.38	3.97	8.07
5,189.00	7.33	350.57	5,178.59	-11.64	-276.99	7.34	7.82
5,220.00	9.93	353.00	5,209.23	-7.04	-277.64	11.98	8.47
5,252.00	13.28	346.61	5,240.57	-0.72	-278.83	18.36	11.20
5,284.00	15.25	347.92	5,271.59	6.97	-280.56	26.16	6.24
5,315.00	17.50	348.28	5,301.33	15.52	-282.36	34.81	7.27
5,347.00	20.41	347.00	5,331.59	25.67	-284.59	45.09	9.19
5,379.00	23.63	345.55	5,361.25	37.32	-287.45	56.91	10.20
5,410.00	27.64	345.13	5,389.19	50.29	-290.85	70.08	12.95
5,442.00	30.99	344.65	5,417.09	65.41	-294.93	85.45	10.49
5,472.00	35.32	343.96	5,442.20	81.20	-299.37	101.51	14.49
5,503.00	40.03	343.15	5,466.73	99.37	-304.74	119.99	15.28
5,535.00	45.47	343.32	5,490.22	120.16	-311.01	141.17	17.00
5,567.00	50.05	342.78	5,511.73	142.81	-317.91	164.24	14.37
5,598.00	54.26	342.77	5,530.74	166.19	-325.16	188.06	13.58
5,630.00	59.65	342.84	5,548.18	191.81	-333.09	214.16	16.84
5,661.00	64.65	342.87	5,562.66	217.99	-341.17	240.83	16.13
5,693.00	69.35	343.86	5,575.16	246.21	-349.59	269.56	14.96
5,725.00	75.07	343.77	5,584.93	275.46	-358.08	299.32	17.88
5,756.00	80.37	344.79	5,591.53	304.60	-366.28	328.96	17.40
5,788.00	85.16	344.83	5,595.55	335.23	-374.60	360.08	14.97
5,790.00	85.34	344.49	5,595.72	337.15	-375.12	362.04	19.18
5,821.00	90.09	343.88	5,596.96	366.95	-383.56	392.34	15.45
5,853.00	91.66	340.78	5,596.47	397.43	-393.27	423.42	10.86
5,885.00	92.13	341.47	5,595.41	427.69	-403.62	454.32	2.61
5,916.00	93.82	340.31	5,593.80	456.94	-413.76	484.19	6.61
5,948.00	95.02	339.53	5,591.33	486.91	-424.71	514.84	4.47
5,980.00	96.35	338.60	5,588.16	516.65	-436.09	545.28	5.06
6,011.00	97.67	336.06	5,584.38	545.03	-447.94	574.42	9.18
6,043.00	96.58	335.01	5,580.41	573.94	-461.09	604.15	4.71
6,074.00	95.67	334.23	5,577.10	601.78	-474.30	632.84	3.86
6,091.00	95.47	332.66	5,575.45	616.92	-481.87	648.45	9.27
6,202.00	91.32	338.12	5,568.88	717.60	-527.97	752.06	6.17
6,297.00	87.73	341.78	5,569.66	806.81	-560.53	843.29	5.40
6,392.00	90.33	343.71	5,571.27	897.51	-588.70	935.70	3.41
6,487.00	89.40	347.96	5,571.50	989.60	-611.95	1,029.17	4.58
6,582.00	89.07	353.19	5,572.77	1,083.28	-627.50	1,123.69	5.52
6,677.00	90.03	354.78	5,573.51	1,177.75	-637.45	1,218.62	1.96
6,772.00	90.46	358.99	5,573.11	1,272.58	-642.61	1,313.58	4.45
6,867.00	91.53	1.44	5,571.46	1,367.56	-642.25	1,408.31	2.81
6,962.00	91.37	3.56	5,569.05	1,462.43	-638.11	1,502.68	2.24

Design Report for Razor #26I-2313A - Actual Field Surveys

Measured Depth (usft)	Inclination (°)	Azimuth (°)	Vertical Depth (usft)	+N/-S (usft)	+E/-W (usft)	Vertical Section (usft)	Dogleg Rate (°/100usft)
7,057.00	89.32	6.20	5,568.48	1,557.07	-630.03	1,596.55	3.52
7,152.00	88.61	7.34	5,570.20	1,651.39	-618.84	1,689.88	1.41
7,247.00	91.02	5.34	5,570.50	1,745.80	-608.35	1,783.35	3.30
7,342.00	90.46	4.52	5,569.28	1,840.44	-600.18	1,877.21	1.05
7,437.00	89.11	3.77	5,569.63	1,935.19	-593.32	1,971.26	1.63
7,532.00	90.68	1.06	5,569.81	2,030.09	-589.31	2,065.67	3.30
7,626.00	90.64	359.73	5,568.72	2,124.08	-588.67	2,159.39	1.42
7,721.00	90.94	0.97	5,567.41	2,219.07	-588.09	2,254.12	1.34
7,816.00	90.70	359.76	5,566.05	2,314.05	-587.48	2,348.84	1.30
7,911.00	91.84	1.80	5,563.95	2,409.02	-586.19	2,443.49	2.46
8,006.00	91.94	1.47	5,560.81	2,503.93	-583.48	2,537.99	0.36
8,101.00	91.51	358.42	5,557.95	2,598.87	-583.57	2,632.72	3.24
8,196.00	91.05	0.25	5,555.83	2,693.84	-584.67	2,727.54	1.99
8,290.00	89.43	2.45	5,555.44	2,787.80	-582.46	2,821.13	2.91
8,386.00	89.01	2.35	5,556.74	2,883.71	-578.44	2,916.54	0.45
8,480.00	92.88	4.15	5,555.19	2,977.52	-573.11	3,009.77	4.54
8,576.00	90.59	2.72	5,552.29	3,073.30	-567.36	3,104.92	2.81
8,668.00	90.80	1.56	5,551.17	3,165.22	-563.93	3,196.40	1.28
8,760.00	90.31	2.02	5,550.28	3,257.17	-561.06	3,287.94	0.73
8,852.00	89.12	1.20	5,550.74	3,349.13	-558.47	3,379.51	1.57
8,945.00	89.93	359.72	5,551.51	3,442.12	-557.72	3,472.23	1.81
9,036.00	90.74	358.55	5,550.98	3,533.11	-559.10	3,563.09	1.56
9,128.00	88.22	357.78	5,551.81	3,625.05	-562.04	3,655.02	2.86
9,220.00	87.35	359.38	5,555.37	3,716.95	-564.32	3,746.86	1.98
9,312.00	88.74	1.15	5,558.51	3,808.89	-563.90	3,838.56	2.45
9,403.00	90.40	1.30	5,559.19	3,899.86	-561.95	3,929.18	1.83
9,493.00	90.25	0.64	5,558.68	3,989.85	-560.43	4,018.85	0.75
9,585.00	90.31	0.31	5,558.23	4,081.84	-559.66	4,110.58	0.36
9,676.00	89.97	358.28	5,558.01	4,172.83	-560.78	4,201.43	2.26
9,767.00	89.48	359.13	5,558.44	4,263.81	-562.84	4,292.33	1.08
9,858.00	90.96	359.48	5,558.09	4,354.80	-563.94	4,383.18	1.67
9,949.00	91.30	358.88	5,556.30	4,445.77	-565.25	4,474.03	0.76
10,040.00	91.57	358.21	5,554.02	4,536.71	-567.56	4,564.92	0.79
10,132.00	89.49	358.69	5,553.17	4,628.67	-570.04	4,656.83	2.32
10,223.00	89.08	359.06	5,554.31	4,719.64	-571.83	4,747.71	0.61
10,314.00	89.23	357.24	5,555.65	4,810.58	-574.77	4,838.64	2.01
10,419.00	87.71	357.83	5,558.45	4,915.44	-579.28	4,943.57	1.55
10,510.00	87.97	357.84	5,561.88	5,006.31	-582.72	5,034.46	0.29
10,602.00	88.76	359.04	5,564.51	5,098.24	-585.22	5,126.34	1.56
10,693.00	89.45	0.17	5,565.93	5,189.22	-585.85	5,217.15	1.45
10,784.00	90.89	0.93	5,565.66	5,280.22	-584.97	5,307.87	1.79
10,876.00	90.73	359.55	5,564.36	5,372.20	-584.59	5,399.62	1.51
10,966.00	90.65	359.93	5,563.27	5,462.20	-585.00	5,489.43	0.43
11,058.00	90.89	358.65	5,562.04	5,554.18	-586.14	5,581.27	1.42
11,149.00	93.48	359.77	5,558.57	5,645.10	-587.39	5,672.06	3.10
11,240.00	93.86	359.32	5,552.74	5,735.91	-588.11	5,762.71	0.65
11,331.00	92.84	0.26	5,547.43	5,826.75	-588.45	5,853.36	1.52
11,423.00	93.64	0.46	5,542.23	5,918.60	-587.87	5,944.96	0.90
11,514.00	92.46	1.85	5,537.38	6,009.45	-586.04	6,035.47	2.00
11,605.00	88.21	0.05	5,536.85	6,100.41	-584.53	6,126.11	5.07
11,697.00	88.63	0.97	5,539.39	6,192.37	-583.71	6,217.80	1.10

Design Report for Razor #26I-2313A - Actual Field Surveys

Measured Depth (usft)	Inclination (°)	Azimuth (°)	Vertical Depth (usft)	+N/-S (usft)	+E/-W (usft)	Vertical Section (usft)	Dogleg Rate (°/100usft)
11,789.00	87.97	1.72	5,542.12	6,284.30	-581.55	6,309.37	1.09
11,880.00	88.06	1.65	5,545.27	6,375.21	-578.88	6,399.88	0.13
11,971.00	88.55	0.66	5,547.96	6,466.15	-577.04	6,490.48	1.21
12,063.00	89.82	1.74	5,549.27	6,558.11	-575.12	6,582.10	1.81
12,153.00	90.70	2.65	5,548.86	6,648.05	-571.67	6,671.58	1.41
12,245.00	91.72	3.15	5,546.92	6,739.91	-567.02	6,762.91	1.23
12,337.00	91.22	2.02	5,544.56	6,831.78	-562.87	6,854.29	1.34
12,428.00	90.68	0.62	5,543.05	6,922.74	-560.77	6,944.89	1.65
12,520.00	89.53	0.28	5,542.88	7,014.74	-560.05	7,036.62	1.30
12,612.00	89.04	358.80	5,544.03	7,106.72	-560.79	7,128.44	1.69
12,703.00	89.94	359.59	5,544.84	7,197.71	-562.07	7,219.30	1.32
12,795.00	90.03	358.96	5,544.86	7,289.70	-563.23	7,311.16	0.69
12,887.00	90.70	0.11	5,544.28	7,381.69	-563.98	7,402.99	1.45
12,979.00	90.31	359.76	5,543.47	7,473.69	-564.08	7,494.77	0.57
13,070.00	90.17	359.37	5,543.09	7,564.69	-564.77	7,585.60	0.46
13,162.00	90.09	358.48	5,542.88	7,656.67	-566.50	7,677.49	0.97
13,253.00	89.90	358.64	5,542.88	7,747.64	-568.79	7,768.40	0.27
13,344.00	91.14	0.66	5,542.06	7,838.63	-569.34	7,859.22	2.60
13,435.00	89.77	359.21	5,541.34	7,929.62	-569.45	7,950.00	2.19
13,527.00	90.77	359.84	5,540.90	8,021.62	-570.21	8,041.83	1.28
13,618.00	89.91	359.24	5,540.36	8,112.61	-570.94	8,132.66	1.15
13,710.00	90.06	359.36	5,540.39	8,204.60	-572.06	8,224.52	0.21
13,736.00	89.84	358.57	5,540.41	8,230.60	-572.53	8,250.48	3.15
13,785.00	89.84	358.57	5,540.55	8,279.58	-573.76	8,299.44	0.00

Vertical Section Information

Angle Type	Target	Azimuth (°)	Origin Type	Origin +N/_S (usft)	Origin +E/-W (usft)	Start TVD (usft)
Target	Razor 26I-2313A B0 BHL	356.08	Slot	0.00	0.00	5,587.00

Survey tool program

From (usft)	To (usft)	Survey/Plan	Survey Tool
170.00	1,512.00	Surface_Sperry MWD Surveys	MWD+IFR1+MS+sag
1,636.00	6,091.00	Vertical and Build_Sperry MWD Surveys	MWD+IFR1+MS+sag
6,202.00	13,736.00	Lateral_Sperry MWD Surveys	MWD+IFR1+MS+sag



Design Report for Razor #26I-2313A - Actual Field Surveys

Wellbore Targets

Target Name - hit/miss target - Shape	Dip Angle (°)	Dip Dir. (°)	TVD (usft)	+N/-S (usft)	+E/-W (usft)	Northing (usft)	Easting (usft)	Latitude	Longitude
Razor 26I-2313A BC	0.00	0.00	5,587.00	8,280.71	-568.14	1,550,038.91	3,462,915.51	40° 49' 52.500 N	103° 49' 37.729 W
- actual wellpath misses target center by 46.81usft at 13785.00usft MD (5540.55 TVD, 8279.58 N, -573.76 E)									
- Point									
Razor 26I-2313A TC	0.00	0.00	5,590.00	8,280.71	-568.14	1,550,038.91	3,462,915.51	40° 49' 52.500 N	103° 49' 37.729 W
- actual wellpath misses target center by 49.78usft at 13785.00usft MD (5540.55 TVD, 8279.58 N, -573.76 E)									
- Point									

Directional Difficulty Index

Average Dogleg over Survey:	2.16 °/100usft	Maximum Dogleg over Survey:	19.18 °/100usft at 5,790.00 usft
Net Tortousity applicable to Plans:	0.67 °/100usft	Directional Difficulty Index:	6.802

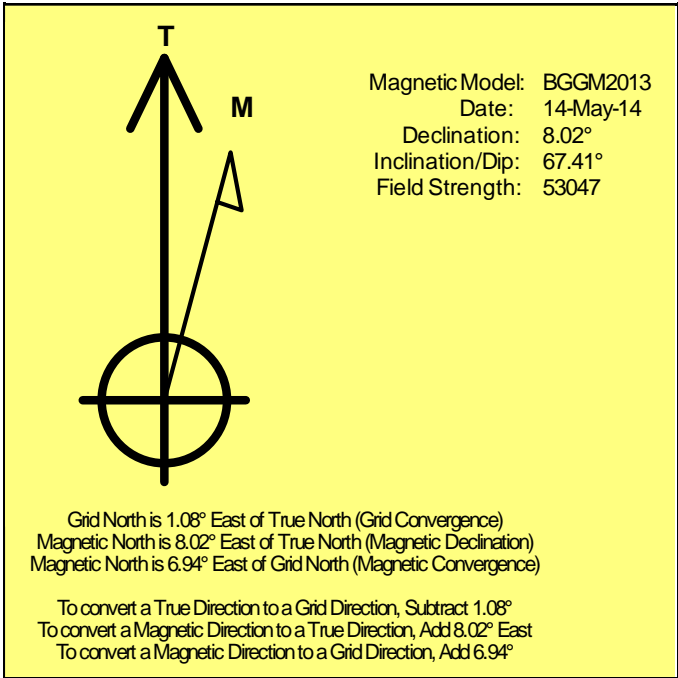
Audit Info

North Reference Sheet for Sec. 26-T10N-R58W - Razor #26I-2313A - Plan D

All data is in US Feet unless otherwise stated. Directions and Coordinates are relative to True North Reference.
Vertical Depths are relative to KB 21' @ 4733.00usft (Frontier 26). Northing and Easting are relative to Razor #26I-2313A
Coordinate System is US State Plane 1983, Colorado Northern Zone using datum North American Datum 1983, ellipsoid GRS 1980
Projection method is Lambert Conformal Conic (2 parallel)
Central Meridian is 105° 30' 0.000 W°, Longitude Origin:0° 0' 0.000 E°, Latitude Origin:40° 47' 0.000 N°
False Easting: 3,000,000.00usft, False Northing: 1,000,000.00usft, Scale Reduction: 1.00000418

Grid Coordinates of Well: 1,541,770.37 usft N, 3,463,639.95 usft E
Geographical Coordinates of Well: 40° 48' 30.68" N, 103° 49' 30.34" W
Grid Convergence at Surface is: 1.08°

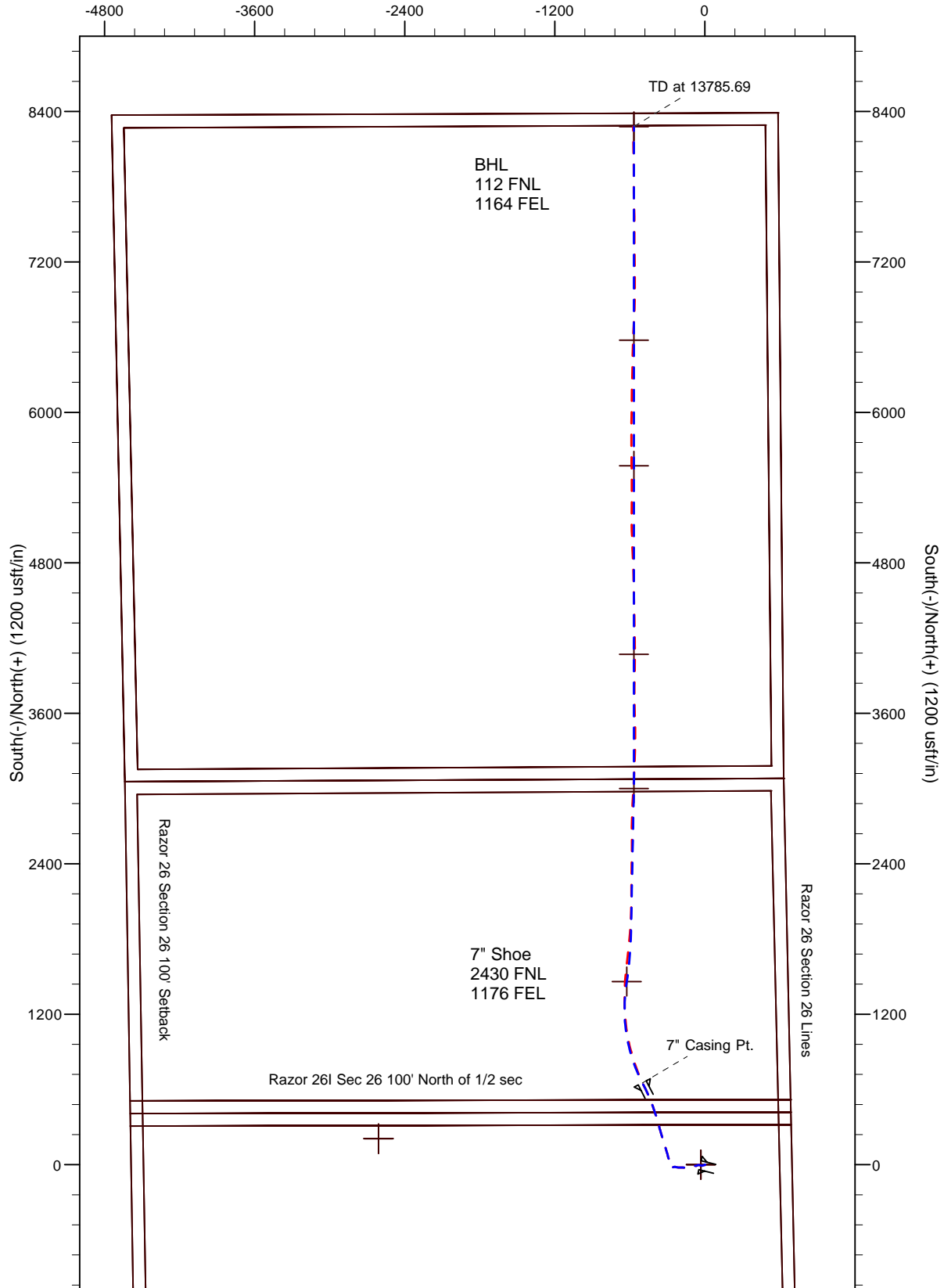
Based upon Minimum Curvature type calculations, at a Measured Depth of 13,785.00usft
the Bottom Hole Displacement is 8,299.44usft in the Direction of 356.04° (True).
Magnetic Convergence at surface is: -6.94° (14 May 2014, , BGGM2013)



Whiting Oil and Gas Corporation

LEGEND

- Razor #26I-2313A, Plan D, Actual Field Surveys V0
 - Rev D0
- West(-)/East(+) (1200 usft/in)



LEGEND

- Razor #26I-2313A, Plan D, Actual Field Surveys V0
- Rev D0

