

## FACILITY PICTURES: NGL C-5

SECTION 29, TOWNSHIP 2 N, RANGE 64 WEST, 6TH P.M. WELD COUNTY, COLORADO.



PHOTO FACING NORTH



PHOTO FACING WEST



PHOTO FACING EAST



PHOTO FACING SOUTH

PREPARED FOR:

**NGL WATER  
SOLUTIONS DJ, LLC.**

**Acklam, Inc.**

**FACILITY PICTURES - NGL C-5**

DATE SURVEYED: 10/3/2014

DATE DRAFTED: 10/07/2014

DRAFTED BY: JAM CHECKED BY: BLL

JOB No. 14580 REVISED:

**NGL C-5**

## ***FACILITY ACCESS PICTURE: NGL C-5***

*SECTION 29, TOWNSHIP 2 N, RANGE 64 WEST, 6TH P.M. WELD COUNTY, COLORADO.*



*ACCESS AT FACILITY*

PREPARED FOR:

***NGL WATER  
SOLUTIONS DJ, LLC.***

***Acklam, Inc.***

***FACILITY ACCESS PICTURE - NGL C-5***

DATE SURVEYED: 10/3/2014

DATE DRAFTED: 10/07/2014

DRAFTED BY: JAM CHECKED BY: BLL

JOB No. 14580 REVISED:

***NGL C-5***

## **FACILITY REFERENCE PICTURES: NGL C-5**

SECTION 29, TOWNSHIP 2 N, RANGE 64 WEST, 6TH P.M. WELD COUNTY, COLORADO.



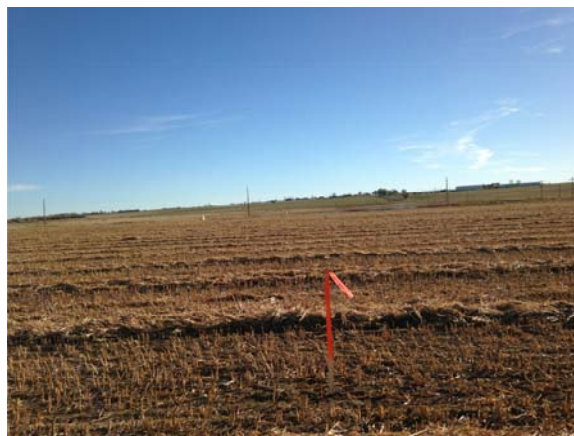
*PHOTO FACING NORTH*



*PHOTO FACING WEST*



*PHOTO FACING EAST*



*PHOTO FACING SOUTH*

PREPARED FOR:

**NGL WATER  
SOLUTIONS DJ, LLC.**

**Acklam, Inc.**

**FACILITY REFERENCE PICTURES - NGL C-5**

DATE SURVEYED: 10/3/2014

DATE DRAFTED: 10/07/2014

DRAFTED BY: JAM CHECKED BY: BLL

JOB No. 14580 REVISED:

**NGL C-5**

REFERENCE POINT

LAT: 40.104088

LONG: 104.582867