

Verdad Oil & Gas Corporation

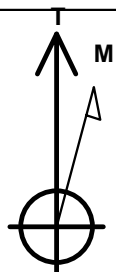
Well Name: **Meehl 01N-65W-24-6N**

Surface Location: Meehl 01N-65W-24 Pad Sec.24-T01N-R65W
 North American Datum 1983 , US State Plane 1983 , Colorado Northern Zone
 Ground Elevation: 5022.0

+N/-S	+E/-W	Northing	Easting	Latitude	Longitude	Slot
0.0	0.0	1255137.24	3249739.23	40.030292	-104.608152	
		RKB - 16.5'	WELL @ 5038.5ft (RKB - 16.5')			

WELLBORE TARGET DETAILS

Name	TVD	+N/-S	+E/-W	Shape
460' Setback BHL	1.0	4585.4	-775.0	Polygon
460' Setback SHL	1.0	189.7	-775.1	Polygon
Sectionline	1.0	-270.3	-775.1	Polygon
SHL 270'FSL & 1488'FEL	1.0	0.1	0.0	Point
BHL 460'FNL & 1155'FEL	7093.5	4582.1	353.9	Point



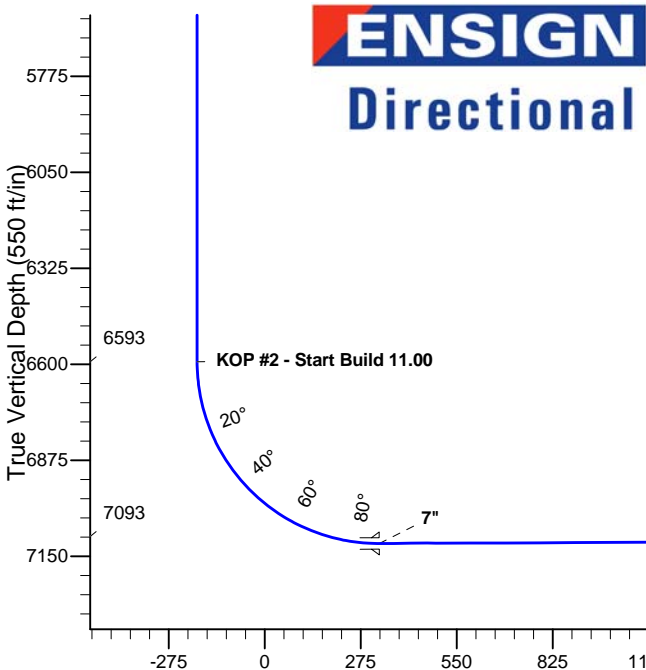
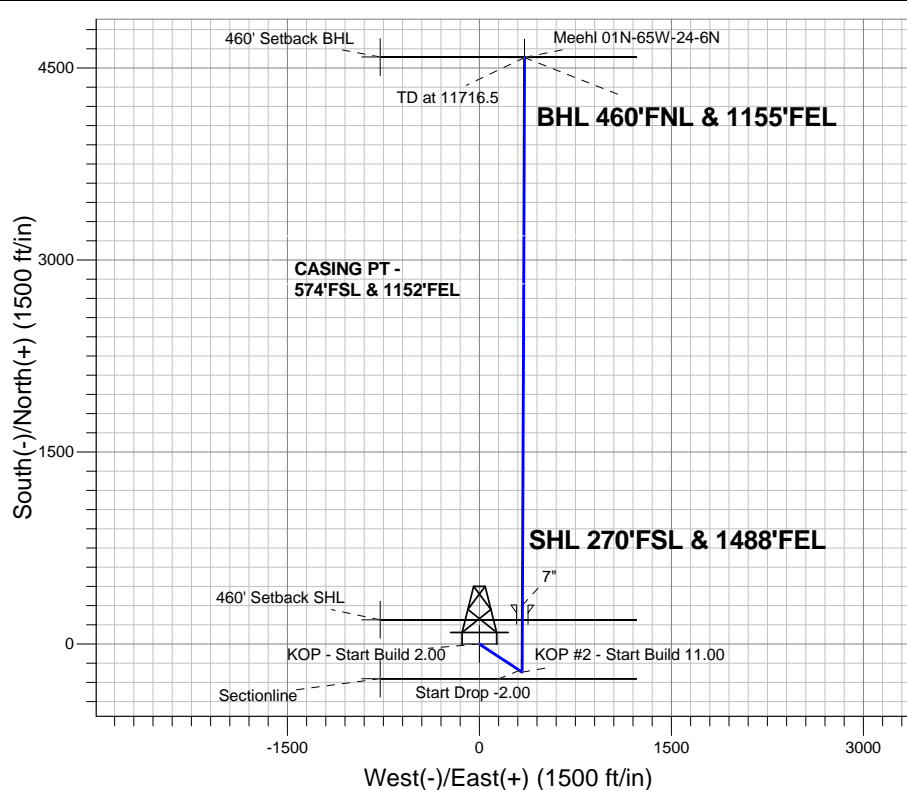
Meehl 01N-65W-24 Pad Sec.24-T01N-R65W
 Meehl 01N-65W-24-6N
 Plan #1 (10-17-14)

Azimuths to True North
 Magnetic North: 8.30°

Magnetic Field
 Strength: 52600.0snT
 Dip Angle: 66.66°
 Date: 10/17/2014
 Model: IGRF2010

ANNOTATIONS

TVD	MD	Annotation
1400.0	1400.0	KOP - Start Build 2.00
4537.9	4561.3	Start Drop -2.00
6592.8	6617.2	KOP #2 - Start Build 11.00
7093.5	11716.5	TD at 11716.5



SECTION DETAILS

Sec	MD	Inc	Azi	TVD	+N/-S	+E/-W	DLeg	TFace	VSec	Target
1	0.0	0.00	0.00	0.0	0.0	0.0	0.00	0.00	0.0	
2	1400.0	0.00	0.00	1400.0	0.0	0.0	0.00	0.00	0.0	
3	1763.1	7.26	123.36	1762.1	-12.6	19.2	2.00	123.36	-11.1	
4	4561.3	7.26	123.36	4537.9	-207.2	314.6	0.00	0.00	-182.3	
5	4924.4	0.00	0.00	4900.0	-219.8	333.8	2.00	180.00	-193.4	
6	6617.2	0.00	0.00	6592.8	-219.8	333.8	0.00	0.00	-193.4	
7	7437.8	90.27	0.24	7113.7	303.5	336.0	11.00	0.24	328.5	
8	11716.5	90.27	0.24	7093.5	4582.1	353.9	0.00	0.00	4595.8	BHL 460'FNL & 1155'FEL

BHL 460'FNL & 1155'FEL

TD at 11716.5

Vertical Section at 4.42° (550 ft/in)



Verdad Oil & Gas Corporation

SEC.24-T1N-R65W

Meehl 01N-65W-24 Pad Sec.24-T01N-R65W

Meehl 01N-65W-24-6N

Wellbore #1

Plan: Plan #1 (10-17-14)

Standard Planning Report

20 October, 2014

Database:	landmark	Local Co-ordinate Reference:	Well Meehl 01N-65W-24-6N
Company:	Verdad Oil & Gas Corporation	TVD Reference:	WELL @ 5038.5ft (RKB - 16.5')
Project:	SEC.24-T1N-R65W	MD Reference:	WELL @ 5038.5ft (RKB - 16.5')
Site:	Meehl 01N-65W-24 Pad Sec.24-T01N-R65W	North Reference:	True
Well:	Meehl 01N-65W-24-6N	Survey Calculation Method:	Minimum Curvature
Wellbore:	Wellbore #1		
Design:	Plan #1 (10-17-14)		

Project	SEC.24-T1N-R65W		
Map System:	US State Plane 1983	System Datum:	Mean Sea Level
Geo Datum:	North American Datum 1983		Using Well Reference Point
Map Zone:	Colorado Northern Zone		Using geodetic scale factor

Site	Meehl 01N-65W-24 Pad Sec.24-T01N-R65W				
Site Position:		Northing:	1,255,136.20ft	Latitude:	40.030291
From:	Lat/Long	Easting:	3,249,664.19ft	Longitude:	-104.608420
Position Uncertainty:	0.0 ft	Slot Radius:	"	Grid Convergence:	0.58 °

Well	Meehl 01N-65W-24-6N					
Well Position	+N/-S	0.3 ft	Northing:	1,255,137.24 ft	Latitude:	40.030292
	+E/-W	75.1 ft	Easting:	3,249,739.23 ft	Longitude:	-104.608152
Position Uncertainty		0.0 ft	Wellhead Elevation:	ft	Ground Level:	5,022.0 ft

Wellbore	Wellbore #1				
Magnetics	Model Name	Sample Date	Declination (°)	Dip Angle (°)	Field Strength (nT)
	IGRF2010	10/17/2014	8.30	66.66	52,600

Design	Plan #1 (10-17-14)			
Audit Notes:				
Version:	Phase:	PROTOTYPE	Tie On Depth:	0.0
Vertical Section:	Depth From (TVD) (ft)	+N/-S (ft)	+E/-W (ft)	Direction (°)
	0.0	0.0	0.0	4.42

Plan Sections										
Measured Depth (ft)	Inclination (°)	Azimuth (°)	Vertical Depth (ft)	+N/-S (ft)	+E/-W (ft)	Dogleg Rate (°/100ft)	Build Rate (°/100ft)	Turn Rate (°/100ft)	TFO (°)	Target
0.0	0.00	0.00	0.0	0.0	0.0	0.00	0.00	0.00	0.00	
1,400.0	0.00	0.00	1,400.0	0.0	0.0	0.00	0.00	0.00	0.00	
1,763.1	7.26	123.36	1,762.1	-12.6	19.2	2.00	2.00	0.00	123.36	
4,561.3	7.26	123.36	4,537.9	-207.2	314.6	0.00	0.00	0.00	0.00	
4,924.4	0.00	0.00	4,900.0	-219.8	333.8	2.00	-2.00	0.00	180.00	
6,617.2	0.00	0.00	6,592.8	-219.8	333.8	0.00	0.00	0.00	0.00	
7,437.8	90.27	0.24	7,113.7	303.5	336.0	11.00	11.00	0.00	0.24	
11,716.5	90.27	0.24	7,093.5	4,582.1	353.9	0.00	0.00	0.00	0.00	BHL 460'FNL & 115'

Database:	landmark	Local Co-ordinate Reference:	Well Meehl 01N-65W-24-6N
Company:	Verdad Oil & Gas Corporation	TVD Reference:	WELL @ 5038.5ft (RKB - 16.5')
Project:	SEC.24-T1N-R65W	MD Reference:	WELL @ 5038.5ft (RKB - 16.5')
Site:	Meehl 01N-65W-24 Pad Sec.24-T01N-R65W	North Reference:	True
Well:	Meehl 01N-65W-24-6N	Survey Calculation Method:	Minimum Curvature
Wellbore:	Wellbore #1		
Design:	Plan #1 (10-17-14)		

Planned Survey									
Measured Depth (ft)	Inclination (°)	Azimuth (°)	Vertical Depth (ft)	+N/-S (ft)	+E/-W (ft)	Vertical Section (ft)	Dogleg Rate (°/100ft)	Build Rate (°/100ft)	Turn Rate (°/100ft)
0.0	0.00	0.00	0.0	0.0	0.0	0.0	0.00	0.00	0.00
100.0	0.00	0.00	100.0	0.0	0.0	0.0	0.00	0.00	0.00
200.0	0.00	0.00	200.0	0.0	0.0	0.0	0.00	0.00	0.00
300.0	0.00	0.00	300.0	0.0	0.0	0.0	0.00	0.00	0.00
400.0	0.00	0.00	400.0	0.0	0.0	0.0	0.00	0.00	0.00
500.0	0.00	0.00	500.0	0.0	0.0	0.0	0.00	0.00	0.00
600.0	0.00	0.00	600.0	0.0	0.0	0.0	0.00	0.00	0.00
700.0	0.00	0.00	700.0	0.0	0.0	0.0	0.00	0.00	0.00
800.0	0.00	0.00	800.0	0.0	0.0	0.0	0.00	0.00	0.00
900.0	0.00	0.00	900.0	0.0	0.0	0.0	0.00	0.00	0.00
1,000.0	0.00	0.00	1,000.0	0.0	0.0	0.0	0.00	0.00	0.00
1,100.0	0.00	0.00	1,100.0	0.0	0.0	0.0	0.00	0.00	0.00
1,200.0	0.00	0.00	1,200.0	0.0	0.0	0.0	0.00	0.00	0.00
1,300.0	0.00	0.00	1,300.0	0.0	0.0	0.0	0.00	0.00	0.00
1,400.0	0.00	0.00	1,400.0	0.0	0.0	0.0	0.00	0.00	0.00
KOP - Start Build 2.00									
1,500.0	2.00	123.36	1,500.0	-1.0	1.5	-0.8	2.00	2.00	0.00
1,600.0	4.00	123.36	1,599.8	-3.8	5.8	-3.4	2.00	2.00	0.00
1,700.0	6.00	123.36	1,699.5	-8.6	13.1	-7.6	2.00	2.00	0.00
1,763.1	7.26	123.36	1,762.1	-12.6	19.2	-11.1	2.00	2.00	0.00
1,800.0	7.26	123.36	1,798.7	-15.2	23.1	-13.4	0.00	0.00	0.00
1,900.0	7.26	123.36	1,897.9	-22.2	33.6	-19.5	0.00	0.00	0.00
2,000.0	7.26	123.36	1,997.1	-29.1	44.2	-25.6	0.00	0.00	0.00
2,100.0	7.26	123.36	2,096.3	-36.1	54.8	-31.7	0.00	0.00	0.00
2,200.0	7.26	123.36	2,195.5	-43.0	65.3	-37.9	0.00	0.00	0.00
2,300.0	7.26	123.36	2,294.7	-50.0	75.9	-44.0	0.00	0.00	0.00
2,400.0	7.26	123.36	2,393.9	-56.9	86.4	-50.1	0.00	0.00	0.00
2,500.0	7.26	123.36	2,493.1	-63.9	97.0	-56.2	0.00	0.00	0.00
2,600.0	7.26	123.36	2,592.3	-70.8	107.5	-62.3	0.00	0.00	0.00
2,700.0	7.26	123.36	2,691.5	-77.8	118.1	-68.4	0.00	0.00	0.00
2,800.0	7.26	123.36	2,790.7	-84.7	128.7	-74.6	0.00	0.00	0.00
2,900.0	7.26	123.36	2,889.9	-91.7	139.2	-80.7	0.00	0.00	0.00
3,000.0	7.26	123.36	2,989.1	-98.6	149.8	-86.8	0.00	0.00	0.00
3,100.0	7.26	123.36	3,088.3	-105.6	160.3	-92.9	0.00	0.00	0.00
3,200.0	7.26	123.36	3,187.5	-112.5	170.9	-99.0	0.00	0.00	0.00
3,300.0	7.26	123.36	3,286.7	-119.5	181.4	-105.2	0.00	0.00	0.00
3,400.0	7.26	123.36	3,385.9	-126.4	192.0	-111.3	0.00	0.00	0.00
3,500.0	7.26	123.36	3,485.1	-133.4	202.6	-117.4	0.00	0.00	0.00
3,600.0	7.26	123.36	3,584.3	-140.3	213.1	-123.5	0.00	0.00	0.00
3,700.0	7.26	123.36	3,683.5	-147.3	223.7	-129.6	0.00	0.00	0.00
3,800.0	7.26	123.36	3,782.7	-154.2	234.2	-135.7	0.00	0.00	0.00
3,900.0	7.26	123.36	3,881.9	-161.2	244.8	-141.9	0.00	0.00	0.00
4,000.0	7.26	123.36	3,981.1	-168.1	255.4	-148.0	0.00	0.00	0.00
4,100.0	7.26	123.36	4,080.3	-175.1	265.9	-154.1	0.00	0.00	0.00
4,200.0	7.26	123.36	4,179.5	-182.0	276.5	-160.2	0.00	0.00	0.00
4,300.0	7.26	123.36	4,278.7	-189.0	287.0	-166.3	0.00	0.00	0.00
4,400.0	7.26	123.36	4,377.9	-195.9	297.6	-172.5	0.00	0.00	0.00
4,500.0	7.26	123.36	4,477.1	-202.9	308.1	-178.6	0.00	0.00	0.00
4,561.3	7.26	123.36	4,537.9	-207.2	314.6	-182.3	0.00	0.00	0.00
Start Drop -2.00									
4,600.0	6.49	123.36	4,576.3	-209.7	318.5	-184.6	2.00	-2.00	0.00
4,700.0	4.49	123.36	4,675.8	-215.0	326.5	-189.2	2.00	-2.00	0.00
4,800.0	2.49	123.36	4,775.7	-218.3	331.5	-192.1	2.00	-2.00	0.00
4,900.0	0.49	123.36	4,875.6	-219.7	333.7	-193.4	2.00	-2.00	0.00

Database:	landmark	Local Co-ordinate Reference:	Well Meehl 01N-65W-24-6N
Company:	Verdad Oil & Gas Corporation	TVD Reference:	WELL @ 5038.5ft (RKB - 16.5')
Project:	SEC.24-T1N-R65W	MD Reference:	WELL @ 5038.5ft (RKB - 16.5')
Site:	Meehl 01N-65W-24 Pad Sec.24-T01N-R65W	North Reference:	True
Well:	Meehl 01N-65W-24-6N	Survey Calculation Method:	Minimum Curvature
Wellbore:	Wellbore #1		
Design:	Plan #1 (10-17-14)		

Planned Survey									
Measured Depth (ft)	Inclination (°)	Azimuth (°)	Vertical Depth (ft)	+N/-S (ft)	+E/-W (ft)	Vertical Section (ft)	Dogleg Rate (°/100ft)	Build Rate (°/100ft)	Turn Rate (°/100ft)
4,924.4	0.00	0.00	4,900.0	-219.8	333.8	-193.4	2.00	-2.00	0.00
5,000.0	0.00	0.00	4,975.6	-219.8	333.8	-193.4	0.00	0.00	0.00
5,100.0	0.00	0.00	5,075.6	-219.8	333.8	-193.4	0.00	0.00	0.00
5,200.0	0.00	0.00	5,175.6	-219.8	333.8	-193.4	0.00	0.00	0.00
5,300.0	0.00	0.00	5,275.6	-219.8	333.8	-193.4	0.00	0.00	0.00
5,400.0	0.00	0.00	5,375.6	-219.8	333.8	-193.4	0.00	0.00	0.00
5,500.0	0.00	0.00	5,475.6	-219.8	333.8	-193.4	0.00	0.00	0.00
5,600.0	0.00	0.00	5,575.6	-219.8	333.8	-193.4	0.00	0.00	0.00
5,700.0	0.00	0.00	5,675.6	-219.8	333.8	-193.4	0.00	0.00	0.00
5,800.0	0.00	0.00	5,775.6	-219.8	333.8	-193.4	0.00	0.00	0.00
5,900.0	0.00	0.00	5,875.6	-219.8	333.8	-193.4	0.00	0.00	0.00
6,000.0	0.00	0.00	5,975.6	-219.8	333.8	-193.4	0.00	0.00	0.00
6,100.0	0.00	0.00	6,075.6	-219.8	333.8	-193.4	0.00	0.00	0.00
6,200.0	0.00	0.00	6,175.6	-219.8	333.8	-193.4	0.00	0.00	0.00
6,300.0	0.00	0.00	6,275.6	-219.8	333.8	-193.4	0.00	0.00	0.00
6,400.0	0.00	0.00	6,375.6	-219.8	333.8	-193.4	0.00	0.00	0.00
6,500.0	0.00	0.00	6,475.6	-219.8	333.8	-193.4	0.00	0.00	0.00
6,600.0	0.00	0.00	6,575.6	-219.8	333.8	-193.4	0.00	0.00	0.00
6,617.2	0.00	0.00	6,592.8	-219.8	333.8	-193.4	0.00	0.00	0.00
KOP #2 - Start Build 11.00									
6,700.0	9.11	0.24	6,675.3	-213.2	333.8	-186.9	11.00	11.00	0.00
6,800.0	20.11	0.24	6,771.9	-188.0	333.9	-161.8	11.00	11.00	0.00
6,900.0	31.11	0.24	6,861.9	-144.9	334.1	-118.7	11.00	11.00	0.00
7,000.0	42.11	0.24	6,942.1	-85.3	334.4	-59.3	11.00	11.00	0.00
7,100.0	53.11	0.24	7,009.4	-11.6	334.7	14.2	11.00	11.00	0.00
7,200.0	64.11	0.24	7,061.4	73.6	335.0	99.2	11.00	11.00	0.00
7,300.0	75.11	0.24	7,096.2	167.2	335.4	192.5	11.00	11.00	0.00
7,400.0	86.11	0.24	7,112.5	265.7	335.8	290.8	11.00	11.00	0.00
7,437.8	90.27	0.24	7,113.7	303.5	336.0	328.5	11.00	11.00	0.00
7"									
7,500.0	90.27	0.24	7,113.4	365.7	336.3	390.5	0.00	0.00	0.00
7,600.0	90.27	0.24	7,112.9	465.7	336.7	490.2	0.00	0.00	0.00
7,700.0	90.27	0.24	7,112.4	565.7	337.1	590.0	0.00	0.00	0.00
7,800.0	90.27	0.24	7,112.0	665.7	337.5	689.7	0.00	0.00	0.00
7,900.0	90.27	0.24	7,111.5	765.7	337.9	789.4	0.00	0.00	0.00
8,000.0	90.27	0.24	7,111.0	865.7	338.3	889.2	0.00	0.00	0.00
8,100.0	90.27	0.24	7,110.5	965.7	338.8	988.9	0.00	0.00	0.00
8,200.0	90.27	0.24	7,110.1	1,065.7	339.2	1,088.6	0.00	0.00	0.00
8,300.0	90.27	0.24	7,109.6	1,165.7	339.6	1,188.4	0.00	0.00	0.00
8,400.0	90.27	0.24	7,109.1	1,265.7	340.0	1,288.1	0.00	0.00	0.00
8,500.0	90.27	0.24	7,108.7	1,365.7	340.4	1,387.8	0.00	0.00	0.00
8,600.0	90.27	0.24	7,108.2	1,465.7	340.9	1,487.6	0.00	0.00	0.00
8,700.0	90.27	0.24	7,107.7	1,565.7	341.3	1,587.3	0.00	0.00	0.00
8,800.0	90.27	0.24	7,107.2	1,665.7	341.7	1,687.0	0.00	0.00	0.00
8,900.0	90.27	0.24	7,106.8	1,765.7	342.1	1,786.8	0.00	0.00	0.00
9,000.0	90.27	0.24	7,106.3	1,865.7	342.5	1,886.5	0.00	0.00	0.00
9,100.0	90.27	0.24	7,105.8	1,965.7	343.0	1,986.2	0.00	0.00	0.00
9,200.0	90.27	0.24	7,105.4	2,065.7	343.4	2,086.0	0.00	0.00	0.00
9,300.0	90.27	0.24	7,104.9	2,165.7	343.8	2,185.7	0.00	0.00	0.00
9,400.0	90.27	0.24	7,104.4	2,265.7	344.2	2,285.4	0.00	0.00	0.00
9,500.0	90.27	0.24	7,103.9	2,365.7	344.6	2,385.2	0.00	0.00	0.00
9,600.0	90.27	0.24	7,103.5	2,465.7	345.0	2,484.9	0.00	0.00	0.00
9,700.0	90.27	0.24	7,103.0	2,565.7	345.5	2,584.6	0.00	0.00	0.00
9,800.0	90.27	0.24	7,102.5	2,665.7	345.9	2,684.4	0.00	0.00	0.00

Database:	landmark	Local Co-ordinate Reference:	Well Meehl 01N-65W-24-6N
Company:	Verdad Oil & Gas Corporation	TVD Reference:	WELL @ 5038.5ft (RKB - 16.5')
Project:	SEC.24-T1N-R65W	MD Reference:	WELL @ 5038.5ft (RKB - 16.5')
Site:	Meehl 01N-65W-24 Pad Sec.24-T01N-R65W	North Reference:	True
Well:	Meehl 01N-65W-24-6N	Survey Calculation Method:	Minimum Curvature
Wellbore:	Wellbore #1		
Design:	Plan #1 (10-17-14)		

Planned Survey										
Measured Depth (ft)	Inclination (°)	Azimuth (°)	Vertical Depth (ft)	+N/-S (ft)	+E/-W (ft)	Vertical Section (ft)	Dogleg Rate (°/100ft)	Build Rate (°/100ft)	Turn Rate (°/100ft)	
9,900.0	90.27	0.24	7,102.1	2,765.6	346.3	2,784.1	0.00	0.00	0.00	
10,000.0	90.27	0.24	7,101.6	2,865.6	346.7	2,883.8	0.00	0.00	0.00	
10,100.0	90.27	0.24	7,101.1	2,965.6	347.1	2,983.6	0.00	0.00	0.00	
10,200.0	90.27	0.24	7,100.6	3,065.6	347.6	3,083.3	0.00	0.00	0.00	
10,300.0	90.27	0.24	7,100.2	3,165.6	348.0	3,183.0	0.00	0.00	0.00	
10,400.0	90.27	0.24	7,099.7	3,265.6	348.4	3,282.8	0.00	0.00	0.00	
10,500.0	90.27	0.24	7,099.2	3,365.6	348.8	3,382.5	0.00	0.00	0.00	
10,600.0	90.27	0.24	7,098.8	3,465.6	349.2	3,482.2	0.00	0.00	0.00	
10,700.0	90.27	0.24	7,098.3	3,565.6	349.6	3,582.0	0.00	0.00	0.00	
10,800.0	90.27	0.24	7,097.8	3,665.6	350.1	3,681.7	0.00	0.00	0.00	
10,900.0	90.27	0.24	7,097.3	3,765.6	350.5	3,781.4	0.00	0.00	0.00	
11,000.0	90.27	0.24	7,096.9	3,865.6	350.9	3,881.2	0.00	0.00	0.00	
11,100.0	90.27	0.24	7,096.4	3,965.6	351.3	3,980.9	0.00	0.00	0.00	
11,200.0	90.27	0.24	7,095.9	4,065.6	351.7	4,080.6	0.00	0.00	0.00	
11,300.0	90.27	0.24	7,095.5	4,165.6	352.2	4,180.4	0.00	0.00	0.00	
11,400.0	90.27	0.24	7,095.0	4,265.6	352.6	4,280.1	0.00	0.00	0.00	
11,500.0	90.27	0.24	7,094.5	4,365.6	353.0	4,379.8	0.00	0.00	0.00	
11,600.0	90.27	0.24	7,094.0	4,465.6	353.4	4,479.6	0.00	0.00	0.00	
11,700.0	90.27	0.24	7,093.6	4,565.6	353.8	4,579.3	0.00	0.00	0.00	
11,716.5	90.27	0.24	7,093.5	4,582.1	353.9	4,595.8	0.00	0.00	0.00	

Targets										
Target Name	Dip Angle (°)	Dip Dir. (°)	TVD (ft)	+N/-S (ft)	+E/-W (ft)	Northing (ft)	Easting (ft)	Latitude	Longitude	
Sectionline - hit/miss target - Shape	0.00	0.00	1.0	-270.3	-775.1	1,254,859.18	3,248,966.97	40.029550	-104.610920	
- plan misses by 820.8ft at 1.0ft MD (1.0 TVD, 0.0 N, 0.0 E)										
- Polygon										
Point 1			1.0	0.0	0.0	1,254,859.18	3,248,966.97			
Point 2			1.0	0.0	2,000.0	1,254,879.30	3,250,966.79			
460' Setback BHL - plan misses by 4650.4ft at 1.0ft MD (1.0 TVD, 0.0 N, 0.0 E)	0.00	0.00	1.0	4,585.4	-775.0	1,259,714.45	3,248,918.15	40.042879	-104.610920	
- Polygon										
Point 1			1.0	0.0	0.0	1,259,714.45	3,248,918.15			
Point 2			1.0	0.0	2,000.0	1,259,734.57	3,250,917.97			
460' Setback SHL - plan misses by 797.9ft at 1.0ft MD (1.0 TVD, 0.0 N, 0.0 E)	0.00	0.00	1.0	189.7	-775.1	1,255,319.14	3,248,962.34	40.030813	-104.610920	
- Polygon										
Point 1			1.0	0.0	0.0	1,255,319.14	3,248,962.34			
Point 2			1.0	0.0	2,000.0	1,255,339.26	3,250,962.16			
BHL 460'FNL & 1155' - plan hits target - Point	0.00	0.00	7,093.5	4,582.1	353.9	1,259,722.50	3,250,047.02	40.042870	-104.606888	
SHL 270'FSL & 1488' - plan misses by 0.1ft at 1.0ft MD (1.0 TVD, 0.0 N, 0.0 E) - Point	0.00	0.00	1.0	0.1	0.0	1,255,137.32	3,249,739.23	40.030292	-104.608152	

Database:	landmark	Local Co-ordinate Reference:	Well Meehl 01N-65W-24-6N
Company:	Verdad Oil & Gas Corporation	TVD Reference:	WELL @ 5038.5ft (RKB - 16.5')
Project:	SEC.24-T1N-R65W	MD Reference:	WELL @ 5038.5ft (RKB - 16.5')
Site:	Meehl 01N-65W-24 Pad Sec.24-T01N-R65W	North Reference:	True
Well:	Meehl 01N-65W-24-6N	Survey Calculation Method:	Minimum Curvature
Wellbore:	Wellbore #1		
Design:	Plan #1 (10-17-14)		

Casing Points

Measured Depth (ft)	Vertical Depth (ft)	Name	Casing Diameter (")	Hole Diameter (")
7,437.8	7,113.7	7"	7	7-1/2

Plan Annotations

Measured Depth (ft)	Vertical Depth (ft)	Local Coordinates		Comment
		+N/-S (ft)	+E/-W (ft)	
1,400.0	1,400.0	0.0	0.0	KOP - Start Build 2.00
4,561.3	4,537.9	-12.6	19.2	Start Drop -2.00
6,617.2	6,592.8	-207.2	314.6	KOP #2 - Start Build 11.00
11,716.5	7,093.5	-213.7	324.6	TD at 11716.5



Directional

Verdad Oil & Gas Corporation

SEC.24-T1N-R65W

Meehl 01N-65W-24 Pad Sec.24-T01N-R65W

Meehl 01N-65W-24-6N

Wellbore #1

Plan #1 (10-17-14)

Anticollision Report

20 October, 2014

Company:	Verdad Oil & Gas Corporation	Local Co-ordinate Reference:	Well Meehl 01N-65W-24-6N
Project:	SEC.24-T1N-R65W	TVD Reference:	WELL @ 5038.5ft (RKB - 16.5')
Reference Site:	Meehl 01N-65W-24 Pad Sec.24-T01N-R65W	MD Reference:	WELL @ 5038.5ft (RKB - 16.5')
Site Error:	0.0ft	North Reference:	True
Reference Well:	Meehl 01N-65W-24-6N	Survey Calculation Method:	Minimum Curvature
Well Error:	0.0ft	Output errors are at	2.00 sigma
Reference Wellbore	Wellbore #1	Database:	landmark
Reference Design:	Plan #1 (10-17-14)	Offset TVD Reference:	Offset Datum

Reference	Plan #1 (10-17-14)		
Filter type:	NO GLOBAL FILTER: Using user defined selection & filtering criteria		
Interpolation Method:	MD Interval 100.0ft	Error Model:	ISCWSA
Depth Range:	Unlimited	Scan Method:	Closest Approach 3D
Results Limited by:	Maximum center-center distance of 1,000.0ft	Error Surface:	Elliptical Conic
Warning Levels Evaluated at:	2.00 Sigma		

Survey Tool Program	Date	10/20/2014		
From (ft)	To (ft)	Survey (Wellbore)	Tool Name	Description
0.0	11,716.5	Plan #1 (10-17-14) (Wellbore #1)	MWD	MWD - Standard

Site Name	Reference Measured Depth (ft)	Offset Measured Depth (ft)	Distance Between Centres (ft)	Distance Between Ellipses (ft)	Separation Factor	Warning
Summary						
Offset Well - Wellbore - Design						
Meehl 01N-65W-24 Pad Sec.24-T01N-R65W						
Meehl 01N-65W-24-1C - Wellbore #1 - Plan #1 (10-17-14)	200.0	200.0	75.1	74.4	111.303	CC, ES
Meehl 01N-65W-24-1C - Wellbore #1 - Plan #1 (10-17-14)	11,717.3	11,924.9	850.2	675.0	4.853	SF
Meehl 01N-65W-24-2N - Wellbore #1 - Plan #1 (10-17-14)	1,000.0	1,000.0	59.9	55.7	14.033	CC, ES
Meehl 01N-65W-24-2N - Wellbore #1 - Plan #1 (10-17-14)	11,717.3	11,717.3	659.9	480.4	3.677	SF
Meehl 01N-65W-24-3N - Wellbore #1 - Plan #1 (10-17-14)	1,400.0	1,400.0	45.1	39.0	7.430	CC, ES
Meehl 01N-65W-24-3N - Wellbore #1 - Plan #1 (10-17-14)	11,717.3	11,709.2	495.0	315.4	2.756	SF
Meehl 01N-65W-24-4N - Wellbore #1 - Plan #1 (10-17-14)	1,400.0	1,400.0	30.0	23.9	4.938	CC, ES
Meehl 01N-65W-24-4N - Wellbore #1 - Plan #1 (10-17-14)	11,717.3	11,707.1	330.1	150.5	1.837	SF
Meehl 01N-65W-24-5C - Wellbore #1 - Plan #1 (10-17-14)	1,400.0	1,400.0	14.8	8.8	2.446	CC, ES
Meehl 01N-65W-24-5C - Wellbore #1 - Plan #1 (10-17-14)	11,717.3	11,910.2	263.1	136.4	2.077	SF
Meehl 01N-65W-24-7N - Wellbore #1 - Plan #1 (10-17-14)	1,200.0	1,200.0	15.1	10.0	2.925	CC
Meehl 01N-65W-24-7N - Wellbore #1 - Plan #1 (10-17-14)	11,717.3	11,735.4	164.9	-14.7	0.918	Level 1, ES, SF
Meehl 01N-65W-24-8N - Wellbore #1 - Plan #1 (10-17-14)	600.0	600.0	30.0	27.5	12.119	CC, ES
Meehl 01N-65W-24-8N - Wellbore #1 - Plan #1 (10-17-14)	11,717.3	11,757.6	330.1	150.5	1.838	SF
Meehl 01N-65W-24-9C - Wellbore #1 - Plan #1 (10-17-14)	200.0	200.0	45.1	44.4	66.864	CC, ES
Meehl 01N-65W-24-9C - Wellbore #1 - Plan #1 (10-17-14)	11,717.3	12,033.7	535.8	368.9	3.210	SF

Offset Design	Meehl 01N-65W-24 Pad Sec.24-T01N-R65W - Meehl 01N-65W-24-1C - Wellbore #1 - Plan #1 (10-17-1)											Offset Site Error:	0.0ft	
Survey Program:	0-MWD											Offset Well Error:	0.0ft	
Reference	Offset	Semi Major Axis			Distance								Warning	
Measured Depth (ft)	Vertical Depth (ft)	Measured Depth (ft)	Vertical Depth (ft)	Reference (ft)	Offset (ft)	Highside Toolface (°)	Offset Wellbore Centre +N/-S (ft)	Offset Wellbore Centre +E/-W (ft)	Between Centres (ft)	Between Ellipses (ft)	Minimum Separation (ft)	Separation Factor	Warning	
0.0	0.0	0.0	0.0	0.0	0.0	-90.23	-0.3	-75.1	75.1					
100.0	100.0	100.0	100.0	0.1	0.1	-90.23	-0.3	-75.1	75.1	74.8	0.22	333.908		
200.0	200.0	200.0	200.0	0.3	0.3	-90.23	-0.3	-75.1	75.1	74.4	0.67	111.303	CC, ES	
300.0	300.0	297.7	297.7	0.6	0.5	-90.81	-1.1	-76.5	76.6	75.5	1.10	69.426		
400.0	400.0	395.2	395.0	0.8	0.8	-92.41	-3.4	-80.9	81.1	79.6	1.54	52.746		
500.0	500.0	492.2	491.7	1.0	1.0	-94.71	-7.3	-88.2	88.9	86.9	2.00	44.384		
600.0	600.0	589.5	588.3	1.2	1.3	-97.31	-12.6	-98.3	99.8	97.3	2.50	39.869		
700.0	700.0	688.7	686.8	1.5	1.6	-99.56	-18.4	-109.2	111.6	108.5	3.02	36.879		
800.0	800.0	787.9	785.2	1.7	1.9	-101.39	-24.2	-120.2	123.5	119.9	3.55	34.748		
900.0	900.0	887.1	883.6	1.9	2.2	-102.89	-30.0	-131.1	135.5	131.4	4.09	33.171		
1,000.0	1,000.0	986.4	982.1	2.1	2.5	-104.15	-35.8	-142.1	147.6	143.0	4.62	31.964		
1,100.0	1,100.0	1,085.6	1,080.5	2.4	2.8	-105.21	-41.6	-153.1	159.8	154.7	5.15	31.015		

CC - Min centre to center distance or convergent point, SF - min separation factor, ES - min ellipse separation

Company:	Verdad Oil & Gas Corporation	Local Co-ordinate Reference:	Well Meehl 01N-65W-24-6N
Project:	SEC.24-T1N-R65W	TVD Reference:	WELL @ 5038.5ft (RKB - 16.5')
Reference Site:	Meehl 01N-65W-24 Pad Sec.24-T01N-R65W	MD Reference:	WELL @ 5038.5ft (RKB - 16.5')
Site Error:	0.0ft	North Reference:	True
Reference Well:	Meehl 01N-65W-24-6N	Survey Calculation Method:	Minimum Curvature
Well Error:	0.0ft	Output errors are at	2.00 sigma
Reference Wellbore	Wellbore #1	Database:	landmark
Reference Design:	Plan #1 (10-17-14)	Offset TVD Reference:	Offset Datum

Offset Design													Offset Site Error:	0.0 ft	
Survey Program: 0-MWD													Offset Well Error:		0.0 ft
Reference		Offset		Semi Major Axis			Distance						Warning		
Measured Depth (ft)	Vertical Depth (ft)	Measured Depth (ft)	Vertical Depth (ft)	Reference (ft)	Offset (ft)	Highside Toolface (°)	Offset Wellbore Centre +N/-S (ft)	+E/-W (ft)	Between Centres (ft)	Between Ellipses (ft)	Minimum Separation (ft)	Separation Factor			
1,200.0	1,200.0	1,184.8	1,178.9	2.6	3.2	-106.13	-47.4	-164.0	172.0	166.3	5.69	30.250			
1,300.0	1,300.0	1,284.0	1,277.4	2.8	3.5	-106.92	-53.2	-175.0	184.3	178.1	6.22	29.623			
1,400.0	1,400.0	1,383.2	1,375.8	3.0	3.8	-107.62	-59.0	-185.9	196.6	189.8	6.76	29.100			
1,500.0	1,500.0	1,482.3	1,474.1	3.2	4.1	128.57	-64.8	-196.9	210.0	203.4	6.56	32.018			
1,600.0	1,599.8	1,581.1	1,572.1	3.4	4.5	128.82	-70.6	-207.8	225.5	218.5	6.98	32.328			
1,700.0	1,699.5	1,679.4	1,669.7	3.6	4.8	129.62	-76.4	-218.6	243.3	235.9	7.40	32.867			
1,800.0	1,798.7	1,777.2	1,766.7	3.8	5.1	130.90	-82.1	-229.4	263.2	255.4	7.85	33.549			
1,900.0	1,897.9	1,874.8	1,863.6	4.1	5.4	132.27	-87.8	-240.2	283.7	275.4	8.31	34.135			
2,000.0	1,997.1	1,972.5	1,960.5	4.3	5.8	133.46	-93.5	-251.0	304.4	295.6	8.79	34.637			
2,100.0	2,096.3	2,070.1	2,057.4	4.6	6.1	134.49	-99.2	-261.8	325.2	315.9	9.27	35.070			
2,200.0	2,195.5	2,167.8	2,154.3	4.9	6.4	135.40	-105.0	-272.6	346.0	336.2	9.76	35.445			
2,300.0	2,294.7	2,265.5	2,251.1	5.1	6.7	136.21	-110.7	-283.4	366.9	356.7	10.26	35.775			
2,400.0	2,393.9	2,363.1	2,348.0	5.4	7.0	136.93	-116.4	-294.2	387.9	377.2	10.76	36.065			
2,500.0	2,493.1	2,460.8	2,444.9	5.7	7.4	137.58	-122.1	-305.0	409.0	397.7	11.26	36.323			
2,600.0	2,592.3	2,558.5	2,541.8	6.0	7.7	138.17	-127.8	-315.7	430.1	418.3	11.77	36.553			
2,700.0	2,691.5	2,656.1	2,638.7	6.3	8.0	138.70	-133.5	-326.5	451.2	438.9	12.27	36.759			
2,800.0	2,790.7	2,753.8	2,735.6	6.6	8.3	139.18	-139.2	-337.3	472.4	459.6	12.79	36.946			
2,900.0	2,889.9	2,851.4	2,832.5	6.9	8.7	139.62	-145.0	-348.1	493.6	480.3	13.30	37.115			
3,000.0	2,989.1	2,949.1	2,929.4	7.2	9.0	140.02	-150.7	-358.9	514.8	501.0	13.81	37.269			
3,100.0	3,088.3	3,046.8	3,026.3	7.5	9.3	140.39	-156.4	-369.7	536.0	521.7	14.33	37.409			
3,200.0	3,187.5	3,144.4	3,123.2	7.8	9.6	140.74	-162.1	-380.5	557.3	542.4	14.85	37.538			
3,300.0	3,286.7	3,242.1	3,220.1	8.1	9.9	141.06	-167.8	-391.2	578.6	563.2	15.36	37.657			
3,400.0	3,385.9	3,339.7	3,317.0	8.4	10.3	141.35	-173.5	-402.0	599.9	584.0	15.88	37.767			
3,500.0	3,485.1	3,437.4	3,413.9	8.8	10.6	141.63	-179.2	-412.8	621.2	604.8	16.40	37.868			
3,600.0	3,584.3	3,535.1	3,510.8	9.1	10.9	141.89	-185.0	-423.6	642.5	625.6	16.92	37.962			
3,700.0	3,683.5	3,632.7	3,607.7	9.4	11.2	142.13	-190.7	-434.4	663.8	646.4	17.45	38.050			
3,800.0	3,782.7	3,730.4	3,704.6	9.7	11.6	142.35	-196.4	-445.2	685.2	667.2	17.97	38.132			
3,900.0	3,881.9	3,828.0	3,801.5	10.0	11.9	142.57	-202.1	-456.0	706.5	688.0	18.49	38.208			
4,000.0	3,981.1	3,925.7	3,898.4	10.3	12.2	142.77	-207.8	-466.7	727.9	708.9	19.02	38.280			
4,100.0	4,080.3	4,040.1	4,011.9	10.7	12.5	143.01	-214.1	-478.6	748.7	729.1	19.54	38.312			
4,200.0	4,179.5	4,169.5	4,141.0	11.0	12.8	143.44	-218.8	-487.5	765.9	745.8	20.04	38.209			
4,300.0	4,278.7	4,300.4	4,271.7	11.3	13.0	144.04	-220.8	-491.3	779.0	758.5	20.53	37.938			
4,400.0	4,377.9	4,406.5	4,377.9	11.6	13.1	144.61	-220.9	-491.5	789.4	768.4	20.99	37.602			
4,500.0	4,477.1	4,505.7	4,477.1	12.0	13.3	145.13	-220.9	-491.5	799.8	778.4	21.43	37.313			
4,600.0	4,576.3	4,604.9	4,576.3	12.3	13.4	145.67	-220.9	-491.5	810.0	788.1	21.89	37.007			
4,700.0	4,675.8	4,704.5	4,675.8	12.5	13.6	146.14	-220.9	-491.5	817.9	795.6	22.32	36.650			
4,800.0	4,775.7	4,804.3	4,775.7	12.7	13.7	146.43	-220.9	-491.5	823.0	800.3	22.72	36.225			
4,900.0	4,875.6	4,904.2	4,875.6	12.9	13.9	146.55	-220.9	-491.5	825.2	802.1	23.09	35.734			
5,000.0	4,975.6	5,004.2	4,975.6	13.0	14.0	-90.08	-220.9	-491.5	825.3	801.8	23.45	35.191			
5,100.0	5,075.6	5,104.2	5,075.6	13.2	14.2	-90.08	-220.9	-491.5	825.3	801.4	23.81	34.658			
5,200.0	5,175.6	5,204.2	5,175.6	13.4	14.3	-90.08	-220.9	-491.5	825.3	801.1	24.17	34.137			
5,300.0	5,275.6	5,304.2	5,275.6	13.5	14.5	-90.08	-220.9	-491.5	825.3	800.7	24.54	33.627			
5,400.0	5,375.6	5,404.2	5,375.6	13.7	14.6	-90.08	-220.9	-491.5	825.3	800.3	24.91	33.128			
5,500.0	5,475.6	5,504.2	5,475.6	13.9	14.8	-90.08	-220.9	-491.5	825.3	800.0	25.28	32.641			
5,600.0	5,575.6	5,604.2	5,575.6	14.1	15.0	-90.08	-220.9	-491.5	825.3	799.6	25.66	32.165			
5,700.0	5,675.6	5,704.2	5,675.6	14.2	15.1	-90.08	-220.9	-491.5	825.3	799.2	26.03	31.699			
5,800.0	5,775.6	5,804.2	5,775.6	14.4	15.3	-90.08	-220.9	-491.5	825.3	798.8	26.41	31.244			
5,900.0	5,875.6	5,904.2	5,875.6	14.6	15.4	-90.08	-220.9	-491.5	825.3	798.5	26.79	30.800			
6,000.0	5,975.6	6,004.2	5,975.6	14.8	15.6	-90.08	-220.9	-491.5	825.3	798.1	27.18	30.366			
6,100.0	6,075.6	6,104.2	6,075.6	15.0	15.8	-90.08	-220.9	-491.5	825.3	797.7	27.56	29.941			
6,200.0	6,175.6	6,204.2	6,175.6	15.1	16.0	-90.08	-220.9	-491.5	825.3	797.3	27.95	29.526			
6,300.0	6,275.6	6,304.2	6,275.6	15.3	16.1	-90.08	-220.9	-491.5	825.3	796.9	28.34	29.121			

CC - Min centre to center distance or convergent point, SF - min separation factor, ES - min ellipse separation

Company:	Verdad Oil & Gas Corporation	Local Co-ordinate Reference:	Well Meehl 01N-65W-24-6N
Project:	SEC.24-T1N-R65W	TVD Reference:	WELL @ 5038.5ft (RKB - 16.5')
Reference Site:	Meehl 01N-65W-24 Pad Sec.24-T01N-R65W	MD Reference:	WELL @ 5038.5ft (RKB - 16.5')
Site Error:	0.0ft	North Reference:	True
Reference Well:	Meehl 01N-65W-24-6N	Survey Calculation Method:	Minimum Curvature
Well Error:	0.0ft	Output errors are at	2.00 sigma
Reference Wellbore	Wellbore #1	Database:	landmark
Reference Design:	Plan #1 (10-17-14)	Offset TVD Reference:	Offset Datum

Offset Design													Offset Site Error:	0.0 ft	
Survey Program: 0-MWD													Offset Well Error:		0.0 ft
Reference		Offset		Semi Major Axis			Distance						Warning		
Measured Depth (ft)	Vertical Depth (ft)	Measured Depth (ft)	Vertical Depth (ft)	Reference (ft)	Offset (ft)	Highside Toolface (°)	Offset Wellbore Centre +N/-S (ft)	+E/-W (ft)	Between Centres (ft)	Between Ellipses (ft)	Minimum Separation (ft)	Separation Factor			
6,400.0	6,375.6	6,404.2	6,375.6	15.5	16.3	-90.08	-220.9	-491.5	825.3	796.5	28.73	28.725			
6,500.0	6,475.6	6,504.2	6,475.6	15.7	16.5	-90.08	-220.9	-491.5	825.3	796.1	29.12	28.338			
6,600.0	6,575.6	6,604.2	6,575.6	15.9	16.7	-90.08	-220.9	-491.5	825.3	795.7	29.52	27.959			
6,614.2	6,589.8	6,618.4	6,589.8	15.9	16.7	-90.33	-220.9	-491.5	825.3	795.7	29.57	27.909			
6,700.0	6,675.3	6,703.9	6,675.3	16.0	16.8	-90.76	-220.9	-491.5	825.3	795.4	29.88	27.621			
6,800.0	6,771.9	6,800.5	6,771.9	16.2	17.0	-92.37	-220.9	-491.5	826.0	795.9	30.15	27.397			
6,900.0	6,861.9	6,902.4	6,873.4	16.2	17.2	-94.75	-214.6	-491.4	828.6	798.2	30.33	27.316			
7,000.0	6,942.1	7,015.6	6,982.5	16.2	17.3	-97.16	-185.1	-491.3	832.6	802.2	30.41	27.377			
7,100.0	7,009.4	7,140.6	7,092.3	16.2	17.3	-99.43	-126.0	-491.1	837.7	807.3	30.47	27.491			
7,200.0	7,061.4	7,278.8	7,193.6	16.2	17.3	-101.42	-32.5	-490.7	842.9	812.2	30.68	27.477			
7,300.0	7,096.2	7,429.7	7,271.8	16.4	17.4	-102.90	95.9	-490.1	847.0	815.7	31.28	27.080			
7,400.0	7,112.5	7,589.4	7,311.1	16.8	17.7	-103.59	250.1	-489.5	849.0	816.5	32.54	26.093			
7,500.0	7,113.4	7,709.3	7,313.2	17.6	18.5	-103.61	369.9	-489.0	849.1	814.9	34.14	24.867			
7,600.0	7,112.9	7,809.3	7,312.9	18.6	19.3	-103.62	469.9	-488.5	849.1	813.2	35.96	23.614			
7,700.0	7,112.4	7,909.3	7,312.5	19.7	20.4	-103.63	569.9	-488.1	849.1	811.1	38.05	22.315			
7,800.0	7,112.0	8,009.3	7,312.2	20.9	21.5	-103.64	669.9	-487.7	849.2	808.8	40.38	21.027			
7,900.0	7,111.5	8,109.3	7,311.8	22.2	22.8	-103.65	769.9	-487.3	849.2	806.3	42.91	19.788			
8,000.0	7,111.0	8,209.3	7,311.5	23.5	24.1	-103.65	869.9	-486.9	849.2	803.6	45.61	18.618			
8,100.0	7,110.5	8,309.3	7,311.1	25.0	25.5	-103.66	969.9	-486.4	849.2	800.8	48.45	17.530			
8,200.0	7,110.1	8,409.3	7,310.8	26.5	27.0	-103.67	1,069.9	-486.0	849.3	797.9	51.40	16.524			
8,300.0	7,109.6	8,509.3	7,310.4	28.1	28.6	-103.68	1,169.9	-485.6	849.3	794.9	54.44	15.600			
8,400.0	7,109.1	8,609.3	7,310.1	29.7	30.1	-103.69	1,269.9	-485.2	849.3	791.8	57.57	14.753			
8,500.0	7,108.7	8,709.3	7,309.7	31.3	31.7	-103.69	1,369.9	-484.8	849.4	788.6	60.77	13.978			
8,600.0	7,108.2	8,809.3	7,309.4	33.0	33.4	-103.70	1,469.8	-484.3	849.4	785.4	64.02	13.268			
8,700.0	7,107.7	8,909.3	7,309.0	34.7	35.1	-103.71	1,569.8	-483.9	849.4	782.1	67.32	12.617			
8,800.0	7,107.2	9,009.3	7,308.7	36.4	36.7	-103.72	1,669.8	-483.5	849.4	778.8	70.67	12.020			
8,900.0	7,106.8	9,109.3	7,308.3	38.1	38.5	-103.73	1,769.8	-483.1	849.5	775.4	74.05	11.471			
9,000.0	7,106.3	9,209.3	7,308.0	39.8	40.2	-103.73	1,869.8	-482.7	849.5	772.0	77.47	10.966			
9,100.0	7,105.8	9,309.3	7,307.6	41.6	41.9	-103.74	1,969.8	-482.2	849.5	768.6	80.91	10.499			
9,200.0	7,105.4	9,409.3	7,307.3	43.4	43.7	-103.75	2,069.8	-481.8	849.5	765.2	84.38	10.068			
9,300.0	7,104.9	9,509.3	7,306.9	45.2	45.5	-103.76	2,169.8	-481.4	849.6	761.7	87.87	9.669			
9,400.0	7,104.4	9,609.3	7,306.6	47.0	47.3	-103.77	2,269.8	-481.0	849.6	758.2	91.38	9.298			
9,500.0	7,103.9	9,709.3	7,306.2	48.8	49.1	-103.77	2,369.8	-480.6	849.6	754.7	94.90	8.953			
9,600.0	7,103.5	9,809.3	7,305.9	50.6	50.9	-103.78	2,469.8	-480.1	849.6	751.2	98.44	8.631			
9,700.0	7,103.0	9,909.3	7,305.5	52.4	52.7	-103.79	2,569.8	-479.7	849.7	747.7	101.99	8.331			
9,800.0	7,102.5	10,009.3	7,305.2	54.2	54.5	-103.80	2,669.8	-479.3	849.7	744.1	105.56	8.049			
9,900.0	7,102.1	10,109.3	7,304.8	56.1	56.3	-103.81	2,769.8	-478.9	849.7	740.6	109.14	7.786			
10,000.0	7,101.6	10,209.3	7,304.5	57.9	58.1	-103.81	2,869.8	-478.4	849.8	737.0	112.72	7.538			
10,100.0	7,101.1	10,309.3	7,304.1	59.7	60.0	-103.82	2,969.8	-478.0	849.8	733.5	116.32	7.306			
10,200.0	7,100.6	10,409.3	7,303.8	61.6	61.8	-103.83	3,069.8	-477.6	849.8	729.9	119.92	7.086			
10,300.0	7,100.2	10,509.3	7,303.4	63.4	63.7	-103.84	3,169.8	-477.2	849.8	726.3	123.53	6.879			
10,400.0	7,099.7	10,609.3	7,303.1	65.3	65.5	-103.85	3,269.8	-476.8	849.9	722.7	127.15	6.684			
10,500.0	7,099.2	10,709.3	7,302.7	67.1	67.4	-103.85	3,369.8	-476.3	849.9	719.1	130.77	6.499			
10,600.0	7,098.8	10,809.3	7,302.4	69.0	69.2	-103.86	3,469.8	-475.9	849.9	715.5	134.40	6.324			
10,700.0	7,098.3	10,909.3	7,302.0	70.9	71.1	-103.87	3,569.8	-475.5	849.9	711.9	138.04	6.157			
10,800.0	7,097.8	11,009.3	7,301.7	72.7	72.9	-103.88	3,669.8	-475.1	850.0	708.3	141.68	5.999			
10,900.0	7,097.3	11,109.3	7,301.3	74.6	74.8	-103.89	3,769.8	-474.7	850.0	704.7	145.32	5.849			
11,000.0	7,096.9	11,209.3	7,301.0	76.5	76.7	-103.89	3,869.8	-474.2	850.0	701.1	148.97	5.706			
11,100.0	7,096.4	11,309.3	7,300.6	78.3	78.5	-103.90	3,969.8	-473.8	850.1	697.4	152.62	5.570			
11,200.0	7,095.9	11,409.3	7,300.3	80.2	80.4	-103.91	4,069.8	-473.4	850.1	693.8	156.27	5.440			
11,300.0	7,095.5	11,509.3	7,300.0	82.1	82.3	-103.92	4,169.8	-473.0	850.1	690.2	159.93	5.315			
11,400.0	7,095.0	11,609.3	7,299.6	84.0	84.1	-103.93	4,269.8	-472.6	850.1	686.5	163.59	5.197			

CC - Min centre to center distance or convergent point, SF - min separation factor, ES - min ellipse separation

Company:	Verdad Oil & Gas Corporation	Local Co-ordinate Reference:	Well Meehl 01N-65W-24-6N
Project:	SEC.24-T1N-R65W	TVD Reference:	WELL @ 5038.5ft (RKB - 16.5')
Reference Site:	Meehl 01N-65W-24 Pad Sec.24-T01N-R65W	MD Reference:	WELL @ 5038.5ft (RKB - 16.5')
Site Error:	0.0ft	North Reference:	True
Reference Well:	Meehl 01N-65W-24-6N	Survey Calculation Method:	Minimum Curvature
Well Error:	0.0ft	Output errors are at	2.00 sigma
Reference Wellbore	Wellbore #1	Database:	landmark
Reference Design:	Plan #1 (10-17-14)	Offset TVD Reference:	Offset Datum

Offset Design Meehl 01N-65W-24 Pad Sec.24-T01N-R65W - Meehl 01N-65W-24-1C - Wellbore #1 - Plan #1 (10-17-1													Offset Site Error:	0.0 ft
Survey Program: 0-MWD													Offset Well Error:	0.0 ft
Reference		Offset		Semi Major Axis			Distance						Warning	
Measured Depth (ft)	Vertical Depth (ft)	Measured Depth (ft)	Vertical Depth (ft)	Reference (ft)	Offset (ft)	Highside Toolface (°)	Offset Wellbore Centre +N/-S (ft)	+E/-W (ft)	Between Centres (ft)	Between Ellipses (ft)	Minimum Separation (ft)	Separation Factor		
11,500.0	7,094.5	11,709.3	7,299.3	85.8	86.0	-103.93	4,369.8	-472.1	850.2	682.9	167.26	5.083		
11,600.0	7,094.0	11,809.3	7,298.9	87.7	87.9	-103.94	4,469.8	-471.7	850.2	679.3	170.92	4.974		
11,700.0	7,093.6	11,909.3	7,298.6	89.6	89.8	-103.95	4,569.8	-471.3	850.2	675.6	174.59	4.870		
11,703.7	7,093.6	11,913.0	7,298.5	89.7	89.8	-103.95	4,573.5	-471.3	850.2	675.5	174.73	4.866		
11,717.3	7,093.5	11,924.9	7,298.5	89.9	90.1	-103.95	4,585.4	-471.2	850.2	675.0	175.19	4.853 SF		

Company:	Verdad Oil & Gas Corporation	Local Co-ordinate Reference:	Well Meehl 01N-65W-24-6N
Project:	SEC.24-T1N-R65W	TVD Reference:	WELL @ 5038.5ft (RKB - 16.5')
Reference Site:	Meehl 01N-65W-24 Pad Sec.24-T01N-R65W	MD Reference:	WELL @ 5038.5ft (RKB - 16.5')
Site Error:	0.0ft	North Reference:	True
Reference Well:	Meehl 01N-65W-24-6N	Survey Calculation Method:	Minimum Curvature
Well Error:	0.0ft	Output errors are at	2.00 sigma
Reference Wellbore	Wellbore #1	Database:	landmark
Reference Design:	Plan #1 (10-17-14)	Offset TVD Reference:	Offset Datum

Offset Design													Offset Site Error:	0.0 ft	
Survey Program: 0-MWD													Offset Well Error:		0.0 ft
Reference				Semi Major Axis			Distance						Warning		
Measured Depth (ft)	Vertical Depth (ft)	Measured Depth (ft)	Vertical Depth (ft)	Reference (ft)	Offset (ft)	Highside Toolface (°)	Offset Wellbore Centre +N/-S (ft)	+E/-W (ft)	Between Centres (ft)	Between Ellipses (ft)	Minimum Separation (ft)	Separation Factor			
0.0	0.0	0.0	0.0	0.0	0.0	-89.94	0.1	-59.9	59.9						
100.0	100.0	100.0	100.0	0.1	0.1	-89.94	0.1	-59.9	59.9	59.7	0.22	266.626			
200.0	200.0	200.0	200.0	0.3	0.3	-89.94	0.1	-59.9	59.9	59.3	0.67	88.875			
300.0	300.0	300.0	300.0	0.6	0.6	-89.94	0.1	-59.9	59.9	58.8	1.12	53.325			
400.0	400.0	400.0	400.0	0.8	0.8	-89.94	0.1	-59.9	59.9	58.4	1.57	38.089			
500.0	500.0	500.0	500.0	1.0	1.0	-89.94	0.1	-59.9	59.9	57.9	2.02	29.625			
600.0	600.0	600.0	600.0	1.2	1.2	-89.94	0.1	-59.9	59.9	57.5	2.47	24.239			
700.0	700.0	700.0	700.0	1.5	1.5	-89.94	0.1	-59.9	59.9	57.0	2.92	20.510			
800.0	800.0	800.0	800.0	1.7	1.7	-89.94	0.1	-59.9	59.9	56.6	3.37	17.775			
900.0	900.0	900.0	900.0	1.9	1.9	-89.94	0.1	-59.9	59.9	56.1	3.82	15.684			
1,000.0	1,000.0	1,000.0	1,000.0	2.1	2.1	-89.94	0.1	-59.9	59.9	55.7	4.27	14.033	CC, ES		
1,100.0	1,100.0	1,098.4	1,098.4	2.4	2.3	-90.95	-1.0	-61.2	61.3	56.6	4.69	13.051			
1,200.0	1,200.0	1,196.5	1,196.4	2.6	2.5	-93.73	-4.2	-65.1	65.4	60.3	5.10	12.807			
1,300.0	1,300.0	1,294.2	1,293.7	2.8	2.7	-97.62	-9.6	-71.5	72.5	66.9	5.53	13.113			
1,400.0	1,400.0	1,391.6	1,390.4	3.0	2.9	-101.91	-17.0	-80.5	82.8	76.8	5.97	13.871			
1,500.0	1,500.0	1,490.7	1,488.6	3.2	3.2	131.64	-25.2	-90.4	95.7	89.4	6.36	15.059			
1,600.0	1,599.8	1,589.5	1,586.6	3.4	3.4	130.60	-33.5	-100.4	111.1	104.3	6.75	16.449			
1,700.0	1,699.5	1,687.9	1,684.1	3.6	3.7	130.93	-41.7	-110.3	128.7	121.5	7.16	17.974			
1,800.0	1,798.7	1,785.9	1,781.3	3.8	4.0	132.16	-49.9	-120.1	148.4	140.8	7.58	19.574			
1,900.0	1,897.9	1,883.7	1,878.3	4.1	4.3	133.41	-58.1	-130.0	168.7	160.6	8.03	21.013			
2,000.0	1,997.1	1,981.6	1,975.3	4.3	4.6	134.40	-66.2	-139.8	189.0	180.5	8.48	22.274			
2,100.0	2,096.3	2,079.5	2,072.4	4.6	4.9	135.20	-74.4	-149.7	209.4	200.4	8.95	23.382			
2,200.0	2,195.5	2,177.3	2,169.4	4.9	5.2	135.85	-82.6	-159.5	229.8	220.4	9.43	24.357			
2,300.0	2,294.7	2,275.2	2,266.4	5.1	5.5	136.40	-90.7	-169.4	250.2	240.3	9.92	25.221			
2,400.0	2,393.9	2,373.1	2,363.4	5.4	5.8	136.86	-98.9	-179.2	270.7	260.3	10.42	25.988			
2,500.0	2,493.1	2,470.9	2,460.4	5.7	6.1	137.26	-107.1	-189.1	291.1	280.2	10.91	26.673			
2,600.0	2,592.3	2,568.8	2,557.5	6.0	6.4	137.61	-115.2	-198.9	311.6	300.2	11.42	27.287			
2,700.0	2,691.5	2,666.7	2,654.5	6.3	6.7	137.91	-123.4	-208.8	332.1	320.2	11.93	27.839			
2,800.0	2,790.7	2,764.5	2,751.5	6.6	7.0	138.18	-131.6	-218.6	352.6	340.2	12.44	28.338			
2,900.0	2,889.9	2,862.4	2,848.5	6.9	7.4	138.42	-139.7	-228.5	373.1	360.1	12.96	28.790			
3,000.0	2,989.1	2,960.2	2,945.6	7.2	7.7	138.64	-147.9	-238.3	393.6	380.1	13.48	29.202			
3,100.0	3,088.3	3,058.1	3,042.6	7.5	8.0	138.83	-156.1	-248.1	414.1	400.1	14.00	29.578			
3,200.0	3,187.5	3,156.0	3,139.6	7.8	8.3	139.00	-164.2	-258.0	434.6	420.1	14.53	29.922			
3,300.0	3,286.7	3,253.8	3,236.6	8.1	8.6	139.16	-172.4	-267.8	455.2	440.1	15.05	30.238			
3,400.0	3,385.9	3,351.7	3,333.7	8.4	9.0	139.31	-180.6	-277.7	475.7	460.1	15.58	30.529			
3,500.0	3,485.1	3,449.6	3,430.7	8.8	9.3	139.44	-188.7	-287.5	496.2	480.1	16.11	30.798			
3,600.0	3,584.3	3,547.4	3,527.7	9.1	9.6	139.56	-196.9	-297.4	516.7	500.1	16.64	31.047			
3,700.0	3,683.5	3,645.3	3,624.7	9.4	9.9	139.68	-205.1	-307.2	537.3	520.1	17.18	31.278			
3,800.0	3,782.7	3,762.0	3,740.7	9.7	10.2	139.94	-213.3	-317.2	556.2	538.5	17.71	31.412			
3,900.0	3,881.9	3,880.0	3,858.4	10.0	10.5	140.45	-218.6	-323.5	571.7	553.5	18.21	31.398			
4,000.0	3,981.1	3,998.9	3,977.3	10.3	10.7	141.21	-220.8	-326.2	583.9	565.2	18.70	31.230			
4,100.0	4,080.3	4,101.9	4,080.3	10.7	10.9	141.99	-220.8	-326.2	593.9	574.7	19.16	31.000			
4,200.0	4,179.5	4,201.1	4,179.5	11.0	11.0	142.73	-220.8	-326.2	603.9	584.3	19.61	30.801			
4,300.0	4,278.7	4,300.3	4,278.7	11.3	11.2	143.44	-220.8	-326.2	614.1	594.0	20.06	30.616			
4,400.0	4,377.9	4,399.5	4,377.9	11.6	11.3	144.13	-220.8	-326.2	624.3	603.8	20.51	30.445			
4,500.0	4,477.1	4,498.7	4,477.1	12.0	11.5	144.80	-220.8	-326.2	634.6	613.7	20.95	30.285			
4,600.0	4,576.3	4,597.9	4,576.3	12.3	11.7	145.48	-220.8	-326.2	644.8	623.4	21.41	30.116			
4,700.0	4,675.8	4,697.5	4,675.8	12.5	11.8	146.04	-220.8	-326.2	652.7	630.9	21.84	29.892			
4,800.0	4,775.7	4,797.3	4,775.7	12.7	12.0	146.39	-220.8	-326.2	657.8	635.5	22.24	29.581			
4,900.0	4,875.6	4,897.2	4,875.6	12.9	12.2	146.54	-220.8	-326.2	659.9	637.3	22.61	29.185			
5,000.0	4,975.6	4,997.2	4,975.6	13.0	12.4	-90.09	-220.8	-326.2	660.0	637.0	22.99	28.713			
5,100.0	5,075.6	5,097.2	5,075.6	13.2	12.5	-90.09	-220.8	-326.2	660.0	636.7	23.36	28.252			

CC - Min centre to center distance or convergent point, SF - min separation factor, ES - min ellipse separation

Company:	Verdad Oil & Gas Corporation	Local Co-ordinate Reference:	Well Meehl 01N-65W-24-6N
Project:	SEC.24-T1N-R65W	TVD Reference:	WELL @ 5038.5ft (RKB - 16.5')
Reference Site:	Meehl 01N-65W-24 Pad Sec.24-T01N-R65W	MD Reference:	WELL @ 5038.5ft (RKB - 16.5')
Site Error:	0.0ft	North Reference:	True
Reference Well:	Meehl 01N-65W-24-6N	Survey Calculation Method:	Minimum Curvature
Well Error:	0.0ft	Output errors are at	2.00 sigma
Reference Wellbore	Wellbore #1	Database:	landmark
Reference Design:	Plan #1 (10-17-14)	Offset TVD Reference:	Offset Datum

Offset Design													Offset Site Error:	0.0ft	
Survey Program: 0-MWD													Offset Well Error:		0.0ft
Reference		Offset		Semi Major Axis			Distance						Warning		
Measured Depth (ft)	Vertical Depth (ft)	Measured Depth (ft)	Vertical Depth (ft)	Reference (ft)	Offset (ft)	Highside Toolface (°)	Offset Wellbore Centre +N/-S (ft)	+E/-W (ft)	Between Centres (ft)	Between Ellipses (ft)	Minimum Separation (ft)	Separation Factor			
5,200.0	5,175.6	5,197.2	5,175.6	13.4	12.7	-90.09	-220.8	-326.2	660.0	636.3	23.74	27.803			
5,300.0	5,275.6	5,297.2	5,275.6	13.5	12.9	-90.09	-220.8	-326.2	660.0	635.9	24.12	27.365			
5,400.0	5,375.6	5,397.2	5,375.6	13.7	13.1	-90.09	-220.8	-326.2	660.0	635.5	24.50	26.938			
5,500.0	5,475.6	5,497.2	5,475.6	13.9	13.3	-90.09	-220.8	-326.2	660.0	635.1	24.89	26.522			
5,600.0	5,575.6	5,597.2	5,575.6	14.1	13.5	-90.09	-220.8	-326.2	660.0	634.8	25.27	26.116			
5,700.0	5,675.6	5,697.2	5,675.6	14.2	13.6	-90.09	-220.8	-326.2	660.0	634.4	25.66	25.720			
5,800.0	5,775.6	5,797.2	5,775.6	14.4	13.8	-90.09	-220.8	-326.2	660.0	634.0	26.05	25.335			
5,900.0	5,875.6	5,897.2	5,875.6	14.6	14.0	-90.09	-220.8	-326.2	660.0	633.6	26.44	24.959			
6,000.0	5,975.6	5,997.2	5,975.6	14.8	14.2	-90.09	-220.8	-326.2	660.0	633.2	26.84	24.592			
6,100.0	6,075.6	6,097.2	6,075.6	15.0	14.4	-90.09	-220.8	-326.2	660.0	632.8	27.24	24.234			
6,200.0	6,175.6	6,197.2	6,175.6	15.1	14.6	-90.09	-220.8	-326.2	660.0	632.4	27.63	23.885			
6,300.0	6,275.6	6,297.2	6,275.6	15.3	14.8	-90.09	-220.8	-326.2	660.0	632.0	28.03	23.545			
6,400.0	6,375.6	6,397.2	6,375.6	15.5	15.0	-90.09	-220.8	-326.2	660.0	631.6	28.43	23.213			
6,500.0	6,475.6	6,497.2	6,475.6	15.7	15.2	-90.09	-220.8	-326.2	660.0	631.2	28.84	22.890			
6,600.0	6,575.6	6,597.2	6,575.6	15.9	15.4	-90.09	-220.8	-326.2	660.0	630.8	29.24	22.574			
6,700.0	6,675.3	6,697.9	6,675.9	16.0	15.5	-90.33	-214.2	-326.2	660.0	630.4	29.58	22.310			
6,800.0	6,771.9	6,798.6	6,773.1	16.2	15.6	-90.31	-188.6	-326.1	660.0	630.2	29.78	22.163			
6,900.0	6,861.9	6,899.2	6,863.6	16.2	15.7	-90.28	-144.9	-325.9	660.0	630.1	29.88	22.086			
7,000.0	6,942.1	6,999.8	6,944.0	16.2	15.7	-90.25	-84.7	-325.7	660.0	630.0	30.00	22.002			
7,100.0	7,009.4	7,100.3	7,011.2	16.2	15.7	-90.20	-10.2	-325.3	660.0	629.8	30.25	21.822			
7,200.0	7,061.4	7,200.7	7,062.9	16.2	15.8	-90.14	75.7	-325.0	660.0	629.3	30.75	21.465			
7,300.0	7,096.2	7,301.0	7,097.1	16.4	16.0	-90.09	169.7	-324.6	660.0	628.4	31.59	20.891			
7,400.0	7,112.5	7,401.1	7,112.7	16.8	16.5	-90.02	268.5	-324.2	660.0	627.2	32.80	20.120			
7,500.0	7,113.4	7,501.1	7,113.4	17.6	17.3	-90.00	368.5	-323.8	660.0	625.7	34.36	19.210			
7,600.0	7,112.9	7,601.1	7,112.9	18.6	18.3	-90.00	468.5	-323.3	660.0	623.8	36.25	18.209			
7,700.0	7,112.4	7,701.1	7,112.4	19.7	19.4	-90.00	568.5	-322.9	660.0	621.6	38.43	17.176			
7,800.0	7,112.0	7,801.1	7,112.0	20.9	20.6	-90.00	668.5	-322.5	660.0	619.2	40.85	16.158			
7,900.0	7,111.5	7,901.1	7,111.5	22.2	21.9	-90.00	768.5	-322.1	660.0	616.5	43.47	15.182			
8,000.0	7,111.0	8,001.1	7,111.0	23.5	23.3	-90.00	868.5	-321.7	660.0	613.7	46.27	14.266			
8,100.0	7,110.5	8,101.1	7,110.5	25.0	24.8	-90.00	968.5	-321.2	660.0	610.8	49.20	13.415			
8,200.0	7,110.1	8,201.1	7,110.1	26.5	26.3	-90.00	1,068.5	-320.8	660.0	607.8	52.25	12.633			
8,300.0	7,109.6	8,301.1	7,109.6	28.1	27.9	-90.00	1,168.5	-320.4	660.0	604.6	55.39	11.915			
8,400.0	7,109.1	8,401.1	7,109.1	29.7	29.5	-90.00	1,268.5	-320.0	660.0	601.4	58.62	11.259			
8,500.0	7,108.7	8,501.1	7,108.7	31.3	31.1	-90.00	1,368.5	-319.6	660.0	598.1	61.91	10.660			
8,600.0	7,108.2	8,601.1	7,108.2	33.0	32.8	-90.00	1,468.4	-319.1	660.0	594.7	65.27	10.112			
8,700.0	7,107.7	8,701.1	7,107.7	34.7	34.5	-90.00	1,568.4	-318.7	660.0	591.3	68.67	9.611			
8,800.0	7,107.2	8,801.1	7,107.2	36.4	36.2	-90.00	1,668.4	-318.3	660.0	587.9	72.11	9.152			
8,900.0	7,106.8	8,901.1	7,106.8	38.1	37.9	-90.00	1,768.4	-317.9	660.0	584.4	75.60	8.730			
9,000.0	7,106.3	9,001.1	7,106.3	39.8	39.7	-90.00	1,868.4	-317.5	660.0	580.9	79.11	8.342			
9,100.0	7,105.8	9,101.1	7,105.8	41.6	41.4	-90.00	1,968.4	-317.0	660.0	577.3	82.65	7.985			
9,200.0	7,105.4	9,201.1	7,105.4	43.4	43.2	-90.00	2,068.4	-316.6	660.0	573.8	86.22	7.655			
9,300.0	7,104.9	9,301.1	7,104.9	45.2	45.0	-90.00	2,168.4	-316.2	660.0	570.2	89.81	7.349			
9,400.0	7,104.4	9,401.1	7,104.4	47.0	46.8	-90.00	2,268.4	-315.8	660.0	566.6	93.42	7.065			
9,500.0	7,103.9	9,501.1	7,103.9	48.8	48.6	-90.00	2,368.4	-315.3	660.0	562.9	97.04	6.801			
9,600.0	7,103.5	9,601.1	7,103.5	50.6	50.4	-90.00	2,468.4	-314.9	660.0	559.3	100.68	6.555			
9,700.0	7,103.0	9,701.1	7,103.0	52.4	52.3	-90.00	2,568.4	-314.5	660.0	555.6	104.33	6.326			
9,800.0	7,102.5	9,801.1	7,102.5	54.2	54.1	-90.00	2,668.4	-314.1	660.0	552.0	108.00	6.111			
9,900.0	7,102.1	9,901.1	7,102.1	56.1	55.9	-90.00	2,768.4	-313.7	660.0	548.3	111.67	5.910			
10,000.0	7,101.6	10,001.1	7,101.6	57.9	57.8	-90.00	2,868.4	-313.2	660.0	544.6	115.36	5.721			
10,100.0	7,101.1	10,101.1	7,101.1	59.7	59.6	-90.00	2,968.4	-312.8	660.0	540.9	119.05	5.544			
10,200.0	7,100.6	10,201.1	7,100.6	61.6	61.5	-90.00	3,068.4	-312.4	660.0	537.2	122.76	5.376			
10,300.0	7,100.2	10,301.1	7,100.2	63.4	63.3	-90.00	3,168.4	-312.0	660.0	533.5	126.47	5.219			

CC - Min centre to center distance or convergent point, SF - min separation factor, ES - min ellipse separation

Company:	Verdad Oil & Gas Corporation	Local Co-ordinate Reference:	Well Meehl 01N-65W-24-6N
Project:	SEC.24-T1N-R65W	TVD Reference:	WELL @ 5038.5ft (RKB - 16.5')
Reference Site:	Meehl 01N-65W-24 Pad Sec.24-T01N-R65W	MD Reference:	WELL @ 5038.5ft (RKB - 16.5')
Site Error:	0.0ft	North Reference:	True
Reference Well:	Meehl 01N-65W-24-6N	Survey Calculation Method:	Minimum Curvature
Well Error:	0.0ft	Output errors are at	2.00 sigma
Reference Wellbore	Wellbore #1	Database:	landmark
Reference Design:	Plan #1 (10-17-14)	Offset TVD Reference:	Offset Datum

Offset Design													Offset Site Error:	0.0 ft	
Survey Program: 0-MWD													Offset Well Error:		0.0 ft
Reference		Offset		Semi Major Axis			Distance						Warning		
Measured Depth (ft)	Vertical Depth (ft)	Measured Depth (ft)	Vertical Depth (ft)	Reference (ft)	Offset (ft)	Highside Toolface (°)	Offset Wellbore Centre +N/-S (ft)	+E/-W (ft)	Between Centres (ft)	Between Ellipses (ft)	Minimum Separation (ft)	Separation Factor			
10,400.0	7,099.7	10,401.1	7,099.7	65.3	65.2	-90.00	3,268.4	-311.6	660.0	529.8	130.18	5.070			
10,500.0	7,099.2	10,501.1	7,099.2	67.1	67.0	-90.00	3,368.4	-311.1	660.0	526.1	133.91	4.929			
10,600.0	7,098.8	10,601.1	7,098.8	69.0	68.9	-90.00	3,468.4	-310.7	660.0	522.3	137.64	4.795			
10,700.0	7,098.3	10,701.1	7,098.3	70.9	70.8	-90.00	3,568.4	-310.3	660.0	518.6	141.37	4.668			
10,800.0	7,097.8	10,801.1	7,097.8	72.7	72.6	-90.00	3,668.4	-309.9	660.0	514.9	145.11	4.548			
10,900.0	7,097.3	10,901.1	7,097.3	74.6	74.5	-90.00	3,768.4	-309.5	660.0	511.1	148.85	4.434			
11,000.0	7,096.9	11,001.1	7,096.9	76.5	76.4	-90.00	3,868.4	-309.0	660.0	507.4	152.60	4.325			
11,100.0	7,096.4	11,101.1	7,096.4	78.3	78.2	-90.00	3,968.4	-308.6	660.0	503.6	156.35	4.221			
11,200.0	7,095.9	11,201.1	7,095.9	80.2	80.1	-90.00	4,068.4	-308.2	660.0	499.8	160.11	4.122			
11,300.0	7,095.5	11,301.1	7,095.5	82.1	82.0	-90.00	4,168.4	-307.8	660.0	496.1	163.87	4.027			
11,400.0	7,095.0	11,401.1	7,095.0	84.0	83.9	-90.00	4,268.4	-307.4	660.0	492.3	167.63	3.937			
11,500.0	7,094.5	11,501.1	7,094.5	85.8	85.7	-90.00	4,368.4	-306.9	660.0	488.6	171.39	3.850			
11,600.0	7,094.0	11,601.1	7,094.0	87.7	87.6	-90.00	4,468.4	-306.5	659.9	484.8	175.16	3.768			
11,700.0	7,093.6	11,701.1	7,093.6	89.6	89.5	-90.00	4,568.4	-306.1	659.9	481.0	178.93	3.688			
11,716.3	7,093.5	11,717.3	7,093.5	89.9	89.8	-90.00	4,584.6	-306.0	659.9	480.5	179.48	3.677			
11,717.3	7,093.5	11,717.3	7,093.5	89.9	89.8	-90.00	4,584.6	-306.0	659.9	480.4	179.50	3.677 SF			

Company:	Verdad Oil & Gas Corporation	Local Co-ordinate Reference:	Well Meehl 01N-65W-24-6N
Project:	SEC.24-T1N-R65W	TVD Reference:	WELL @ 5038.5ft (RKB - 16.5')
Reference Site:	Meehl 01N-65W-24 Pad Sec.24-T01N-R65W	MD Reference:	WELL @ 5038.5ft (RKB - 16.5')
Site Error:	0.0ft	North Reference:	True
Reference Well:	Meehl 01N-65W-24-6N	Survey Calculation Method:	Minimum Curvature
Well Error:	0.0ft	Output errors are at	2.00 sigma
Reference Wellbore	Wellbore #1	Database:	landmark
Reference Design:	Plan #1 (10-17-14)	Offset TVD Reference:	Offset Datum

Offset Design													Offset Site Error:	0.0 ft	
Survey Program: 0-MWD													Offset Well Error:		0.0 ft
Reference				Offset			Semi Major Axis			Distance				Warning	
Measured Depth (ft)	Vertical Depth (ft)	Measured Depth (ft)	Vertical Depth (ft)	Reference (ft)	Offset (ft)	Highside Toolface (°)	Offset Wellbore Centre +N/-S (ft)	+E/-W (ft)	Between Centres (ft)	Between Ellipses (ft)	Minimum Separation (ft)	Separation Factor			
0.0	0.0	0.0	0.0	0.0	0.0	-90.38	-0.3	-45.1	45.1						
100.0	100.0	100.0	100.0	0.1	0.1	-90.38	-0.3	-45.1	45.1	44.9	0.22	200.597			
200.0	200.0	200.0	200.0	0.3	0.3	-90.38	-0.3	-45.1	45.1	44.4	0.67	66.866			
300.0	300.0	300.0	300.0	0.6	0.6	-90.38	-0.3	-45.1	45.1	44.0	1.12	40.119			
400.0	400.0	400.0	400.0	0.8	0.8	-90.38	-0.3	-45.1	45.1	43.5	1.57	28.657			
500.0	500.0	500.0	500.0	1.0	1.0	-90.38	-0.3	-45.1	45.1	43.1	2.02	22.289			
600.0	600.0	600.0	600.0	1.2	1.2	-90.38	-0.3	-45.1	45.1	42.6	2.47	18.236			
700.0	700.0	700.0	700.0	1.5	1.5	-90.38	-0.3	-45.1	45.1	42.2	2.92	15.431			
800.0	800.0	800.0	800.0	1.7	1.7	-90.38	-0.3	-45.1	45.1	41.7	3.37	13.373			
900.0	900.0	900.0	900.0	1.9	1.9	-90.38	-0.3	-45.1	45.1	41.3	3.82	11.800			
1,000.0	1,000.0	1,000.0	1,000.0	2.1	2.1	-90.38	-0.3	-45.1	45.1	40.8	4.27	10.558			
1,100.0	1,100.0	1,100.0	1,100.0	2.4	2.4	-90.38	-0.3	-45.1	45.1	40.4	4.72	9.552			
1,200.0	1,200.0	1,200.0	1,200.0	2.6	2.6	-90.38	-0.3	-45.1	45.1	39.9	5.17	8.722			
1,300.0	1,300.0	1,300.0	1,300.0	2.8	2.8	-90.38	-0.3	-45.1	45.1	39.5	5.62	8.024			
1,400.0	1,400.0	1,400.0	1,400.0	3.0	3.0	-90.38	-0.3	-45.1	45.1	39.0	6.07	7.430 CC, ES			
1,500.0	1,500.0	1,500.0	1,500.0	3.2	3.3	147.43	-0.3	-45.1	46.5	40.1	6.49	7.168			
1,600.0	1,599.8	1,599.8	1,599.8	3.4	3.5	150.55	-0.3	-45.1	51.0	44.1	6.90	7.400			
1,700.0	1,699.5	1,698.7	1,698.7	3.6	3.7	153.08	-1.8	-45.9	59.4	52.1	7.27	8.168			
1,800.0	1,798.7	1,797.1	1,797.0	3.8	3.9	153.49	-6.3	-48.3	71.9	64.3	7.63	9.425			
1,900.0	1,897.9	1,895.1	1,894.6	4.1	4.0	151.92	-13.7	-52.2	86.3	78.3	8.02	10.762			
2,000.0	1,997.1	1,993.1	1,991.9	4.3	4.2	149.25	-23.8	-57.5	101.9	93.5	8.43	12.092			
2,100.0	2,096.3	2,091.8	2,089.9	4.6	4.4	147.08	-34.3	-63.0	118.0	109.1	8.86	13.310			
2,200.0	2,195.5	2,190.4	2,187.8	4.9	4.7	145.43	-44.8	-68.6	134.1	124.8	9.31	14.404			
2,300.0	2,294.7	2,289.0	2,285.7	5.1	4.9	144.14	-55.3	-74.1	150.3	140.6	9.77	15.383			
2,400.0	2,393.9	2,387.6	2,383.6	5.4	5.1	143.09	-65.8	-79.6	166.6	156.4	10.25	16.260			
2,500.0	2,493.1	2,486.3	2,481.5	5.7	5.4	142.24	-76.3	-85.2	182.9	172.2	10.73	17.046			
2,600.0	2,592.3	2,584.9	2,579.4	6.0	5.7	141.52	-86.8	-90.7	199.3	188.1	11.23	17.753			
2,700.0	2,691.5	2,683.5	2,677.3	6.3	5.9	140.92	-97.2	-96.2	215.7	204.0	11.73	18.390			
2,800.0	2,790.7	2,782.1	2,775.2	6.6	6.2	140.39	-107.7	-101.8	232.1	219.9	12.24	18.965			
2,900.0	2,889.9	2,880.7	2,873.1	6.9	6.5	139.94	-118.2	-107.3	248.5	235.8	12.75	19.486			
3,000.0	2,989.1	2,979.4	2,971.0	7.2	6.7	139.55	-128.7	-112.9	265.0	251.7	13.28	19.959			
3,100.0	3,088.3	3,078.0	3,068.9	7.5	7.0	139.20	-139.2	-118.4	281.4	267.6	13.80	20.389			
3,200.0	3,187.5	3,176.6	3,166.8	7.8	7.3	138.88	-149.7	-123.9	297.9	283.6	14.33	20.783			
3,300.0	3,286.7	3,275.2	3,264.7	8.1	7.6	138.61	-160.2	-129.5	314.4	299.5	14.87	21.143			
3,400.0	3,385.9	3,373.9	3,362.6	8.4	7.9	138.35	-170.7	-135.0	330.8	315.4	15.41	21.475			
3,500.0	3,485.1	3,472.5	3,460.6	8.8	8.2	138.13	-181.2	-140.6	347.3	331.4	15.95	21.779			
3,600.0	3,584.3	3,571.1	3,558.5	9.1	8.5	137.92	-191.7	-146.1	363.8	347.3	16.49	22.061			
3,700.0	3,683.5	3,669.8	3,656.5	9.4	8.8	137.73	-202.2	-151.6	380.3	363.2	17.04	22.321			
3,800.0	3,782.7	3,777.3	3,763.3	9.7	9.0	137.79	-211.8	-156.7	395.6	378.1	17.56	22.528			
3,900.0	3,881.9	3,885.3	3,871.1	10.0	9.3	138.30	-217.9	-159.9	408.8	390.8	18.06	22.633			
4,000.0	3,981.1	3,993.5	3,979.4	10.3	9.5	139.23	-220.4	-161.3	419.9	401.3	18.54	22.647			
4,100.0	4,080.3	4,094.5	4,080.3	10.7	9.7	140.34	-220.5	-161.3	429.6	410.6	18.99	22.623			
4,200.0	4,179.5	4,193.7	4,179.5	11.0	9.9	141.39	-220.5	-161.3	439.4	420.0	19.43	22.612			
4,300.0	4,278.7	4,292.9	4,278.7	11.3	10.0	142.39	-220.5	-161.3	449.4	429.5	19.88	22.611			
4,400.0	4,377.9	4,392.1	4,377.9	11.6	10.2	143.35	-220.5	-161.3	459.5	439.2	20.32	22.617			
4,500.0	4,477.1	4,491.3	4,477.1	12.0	10.4	144.27	-220.5	-161.3	469.8	449.0	20.76	22.629			
4,600.0	4,576.3	4,590.5	4,576.3	12.3	10.6	145.18	-220.5	-161.3	479.9	458.7	21.20	22.634			
4,700.0	4,675.8	4,690.0	4,675.8	12.5	10.8	145.90	-220.5	-161.3	487.8	466.2	21.61	22.572			
4,800.0	4,775.7	4,789.8	4,775.7	12.7	11.0	146.36	-220.5	-161.3	492.8	470.8	22.00	22.401			
4,900.0	4,875.6	4,889.8	4,875.6	12.9	11.2	146.55	-220.5	-161.3	495.0	472.6	22.37	22.127			
5,000.0	4,975.6	4,989.8	4,975.6	13.0	11.4	-90.08	-220.5	-161.3	495.1	472.3	22.75	21.758			
5,100.0	5,075.6	5,089.8	5,075.6	13.2	11.6	-90.08	-220.5	-161.3	495.1	472.0	23.14	21.399			

CC - Min centre to center distance or convergent point, SF - min separation factor, ES - min ellipse separation

Company:	Verdad Oil & Gas Corporation	Local Co-ordinate Reference:	Well Meehl 01N-65W-24-6N
Project:	SEC.24-T1N-R65W	TVD Reference:	WELL @ 5038.5ft (RKB - 16.5')
Reference Site:	Meehl 01N-65W-24 Pad Sec.24-T01N-R65W	MD Reference:	WELL @ 5038.5ft (RKB - 16.5')
Site Error:	0.0ft	North Reference:	True
Reference Well:	Meehl 01N-65W-24-6N	Survey Calculation Method:	Minimum Curvature
Well Error:	0.0ft	Output errors are at	2.00 sigma
Reference Wellbore	Wellbore #1	Database:	landmark
Reference Design:	Plan #1 (10-17-14)	Offset TVD Reference:	Offset Datum

Offset Design													Offset Site Error:	0.0ft	
Survey Program: 0-MWD													Offset Well Error:		0.0ft
Reference		Offset		Semi Major Axis			Distance						Warning		
Measured Depth (ft)	Vertical Depth (ft)	Measured Depth (ft)	Vertical Depth (ft)	Reference (ft)	Offset (ft)	Highside Toolface (°)	Offset Wellbore Centre +N/-S (ft)	+E/-W (ft)	Between Centres (ft)	Between Ellipses (ft)	Minimum Separation (ft)	Separation Factor			
5,200.0	5,175.6	5,189.8	5,175.6	13.4	11.7	-90.08	-220.5	-161.3	495.1	471.6	23.52	21.049			
5,300.0	5,275.6	5,289.8	5,275.6	13.5	11.9	-90.08	-220.5	-161.3	495.1	471.2	23.91	20.709			
5,400.0	5,375.6	5,389.8	5,375.6	13.7	12.1	-90.08	-220.5	-161.3	495.1	470.8	24.30	20.377			
5,500.0	5,475.6	5,489.8	5,475.6	13.9	12.3	-90.08	-220.5	-161.3	495.1	470.4	24.69	20.055			
5,600.0	5,575.6	5,589.8	5,575.6	14.1	12.5	-90.08	-220.5	-161.3	495.1	470.0	25.08	19.741			
5,700.0	5,675.6	5,689.8	5,675.6	14.2	12.7	-90.08	-220.5	-161.3	495.1	469.6	25.47	19.435			
5,800.0	5,775.6	5,789.8	5,775.6	14.4	12.9	-90.08	-220.5	-161.3	495.1	469.2	25.87	19.137			
5,900.0	5,875.6	5,889.8	5,875.6	14.6	13.1	-90.08	-220.5	-161.3	495.1	468.8	26.27	18.847			
6,000.0	5,975.6	5,989.8	5,975.6	14.8	13.3	-90.08	-220.5	-161.3	495.1	468.4	26.67	18.565			
6,100.0	6,075.6	6,089.8	6,075.6	15.0	13.5	-90.08	-220.5	-161.3	495.1	468.0	27.07	18.289			
6,200.0	6,175.6	6,189.8	6,175.6	15.1	13.8	-90.08	-220.5	-161.3	495.1	467.6	27.47	18.021			
6,300.0	6,275.6	6,289.8	6,275.6	15.3	14.0	-90.08	-220.5	-161.3	495.1	467.2	27.88	17.760			
6,400.0	6,375.6	6,389.8	6,375.6	15.5	14.2	-90.08	-220.5	-161.3	495.1	466.8	28.28	17.505			
6,500.0	6,475.6	6,489.8	6,475.6	15.7	14.4	-90.08	-220.5	-161.3	495.1	466.4	28.69	17.257			
6,600.0	6,575.6	6,589.8	6,575.6	15.9	14.6	-90.08	-220.5	-161.3	495.1	466.0	29.10	17.015			
6,700.0	6,675.3	6,690.2	6,675.7	16.0	14.8	-90.32	-213.9	-161.3	495.1	465.6	29.44	16.815			
6,800.0	6,771.9	6,790.8	6,772.8	16.2	14.9	-90.30	-188.4	-161.2	495.1	465.4	29.65	16.700			
6,900.0	6,861.9	6,891.3	6,863.2	16.2	14.9	-90.28	-144.8	-161.0	495.1	465.3	29.76	16.637			
7,000.0	6,942.1	6,991.7	6,943.5	16.2	15.0	-90.24	-84.8	-160.7	495.1	465.2	29.88	16.568			
7,100.0	7,009.4	7,092.0	7,010.7	16.2	15.0	-90.19	-10.5	-160.4	495.1	464.9	30.14	16.424			
7,200.0	7,061.4	7,192.3	7,062.5	16.2	15.2	-90.14	75.2	-160.0	495.1	464.4	30.66	16.147			
7,300.0	7,096.2	7,292.5	7,096.9	16.4	15.7	-90.08	169.1	-159.7	495.1	463.6	31.52	15.708			
7,400.0	7,112.5	7,392.6	7,112.7	16.8	16.3	-90.02	267.8	-159.2	495.1	462.3	32.74	15.121			
7,500.0	7,113.4	7,492.6	7,113.4	17.6	17.1	-90.00	367.8	-158.8	495.1	460.8	34.31	14.431			
7,600.0	7,112.9	7,592.6	7,112.9	18.6	18.1	-90.00	467.8	-158.4	495.1	458.9	36.21	13.673			
7,700.0	7,112.4	7,692.6	7,112.4	19.7	19.2	-90.00	567.8	-158.0	495.1	456.7	38.40	12.894			
7,800.0	7,112.0	7,792.6	7,112.0	20.9	20.4	-90.00	667.8	-157.6	495.1	454.2	40.83	12.126			
7,900.0	7,111.5	7,892.6	7,111.5	22.2	21.7	-90.00	767.8	-157.1	495.1	451.6	43.46	11.392			
8,000.0	7,111.0	7,992.6	7,111.0	23.5	23.1	-90.00	867.8	-156.7	495.1	448.8	46.26	10.702			
8,100.0	7,110.5	8,092.6	7,110.5	25.0	24.6	-90.00	967.8	-156.3	495.1	445.9	49.20	10.063			
8,200.0	7,110.1	8,192.6	7,110.1	26.5	26.1	-90.00	1,067.8	-155.9	495.1	442.8	52.25	9.475			
8,300.0	7,109.6	8,292.6	7,109.6	28.1	27.7	-90.00	1,167.8	-155.5	495.1	439.7	55.40	8.936			
8,400.0	7,109.1	8,392.6	7,109.1	29.7	29.3	-90.00	1,267.8	-155.0	495.1	436.4	58.63	8.444			
8,500.0	7,108.7	8,492.6	7,108.7	31.3	31.0	-90.00	1,367.8	-154.6	495.1	433.1	61.93	7.994			
8,600.0	7,108.2	8,592.6	7,108.2	33.0	32.6	-90.00	1,467.8	-154.2	495.1	429.8	65.29	7.583			
8,700.0	7,107.7	8,692.6	7,107.7	34.7	34.3	-90.00	1,567.8	-153.8	495.1	426.4	68.69	7.207			
8,800.0	7,107.2	8,792.6	7,107.2	36.4	36.1	-90.00	1,667.7	-153.4	495.1	422.9	72.14	6.862			
8,900.0	7,106.8	8,892.6	7,106.8	38.1	37.8	-90.00	1,767.7	-152.9	495.1	419.4	75.63	6.546			
9,000.0	7,106.3	8,992.6	7,106.3	39.8	39.6	-90.00	1,867.7	-152.5	495.1	415.9	79.14	6.255			
9,100.0	7,105.8	9,092.6	7,105.8	41.6	41.3	-90.00	1,967.7	-152.1	495.1	412.4	82.69	5.987			
9,200.0	7,105.4	9,192.6	7,105.4	43.4	43.1	-90.00	2,067.7	-151.7	495.1	408.8	86.25	5.739			
9,300.0	7,104.9	9,292.6	7,104.9	45.2	44.9	-90.00	2,167.7	-151.3	495.1	405.2	89.84	5.510			
9,400.0	7,104.4	9,392.6	7,104.4	47.0	46.7	-90.00	2,267.7	-150.8	495.1	401.6	93.45	5.297			
9,500.0	7,103.9	9,492.6	7,103.9	48.8	48.5	-90.00	2,367.7	-150.4	495.1	398.0	97.08	5.099			
9,600.0	7,103.5	9,592.6	7,103.5	50.6	50.4	-90.00	2,467.7	-150.0	495.1	394.3	100.72	4.915			
9,700.0	7,103.0	9,692.6	7,103.0	52.4	52.2	-90.00	2,567.7	-149.6	495.1	390.7	104.37	4.743			
9,800.0	7,102.5	9,792.6	7,102.5	54.2	54.0	-90.00	2,667.7	-149.2	495.1	387.0	108.04	4.582			
9,900.0	7,102.1	9,892.6	7,102.1	56.1	55.9	-90.00	2,767.7	-148.7	495.0	383.3	111.72	4.431			
10,000.0	7,101.6	9,992.6	7,101.6	57.9	57.7	-90.00	2,867.7	-148.3	495.0	379.6	115.40	4.290			
10,100.0	7,101.1	10,092.6	7,101.1	59.7	59.6	-90.00	2,967.7	-147.9	495.0	375.9	119.10	4.157			
10,200.0	7,100.6	10,192.6	7,100.6	61.6	61.4	-90.00	3,067.7	-147.5	495.0	372.2	122.80	4.031			
10,300.0	7,100.2	10,292.6	7,100.2	63.4	63.3	-90.00	3,167.7	-147.1	495.0	368.5	126.51	3.913			

CC - Min centre to center distance or convergent point, SF - min separation factor, ES - min ellipse separation

Company:	Verdad Oil & Gas Corporation	Local Co-ordinate Reference:	Well Meehl 01N-65W-24-6N
Project:	SEC.24-T1N-R65W	TVD Reference:	WELL @ 5038.5ft (RKB - 16.5')
Reference Site:	Meehl 01N-65W-24 Pad Sec.24-T01N-R65W	MD Reference:	WELL @ 5038.5ft (RKB - 16.5')
Site Error:	0.0ft	North Reference:	True
Reference Well:	Meehl 01N-65W-24-6N	Survey Calculation Method:	Minimum Curvature
Well Error:	0.0ft	Output errors are at	2.00 sigma
Reference Wellbore	Wellbore #1	Database:	landmark
Reference Design:	Plan #1 (10-17-14)	Offset TVD Reference:	Offset Datum

Offset Design													Offset Site Error:	0.0 ft	
Survey Program: 0-MWD													Offset Well Error:		0.0 ft
Reference		Offset		Semi Major Axis			Distance						Warning		
Measured Depth (ft)	Vertical Depth (ft)	Measured Depth (ft)	Vertical Depth (ft)	Reference (ft)	Offset (ft)	Highside Toolface (°)	Offset Wellbore Centre +N/-S (ft)	+E/-W (ft)	Between Centres (ft)	Between Ellipses (ft)	Minimum Separation (ft)	Separation Factor			
10,400.0	7,099.7	10,392.6	7,099.7	65.3	65.1	-90.00	3,267.7	-146.6	495.0	364.8	130.23	3.801			
10,500.0	7,099.2	10,492.6	7,099.2	67.1	67.0	-90.00	3,367.7	-146.2	495.0	361.1	133.96	3.696			
10,600.0	7,098.8	10,592.6	7,098.8	69.0	68.9	-90.00	3,467.7	-145.8	495.0	357.4	137.69	3.595			
10,700.0	7,098.3	10,692.6	7,098.3	70.9	70.7	-90.00	3,567.7	-145.4	495.0	353.6	141.42	3.500			
10,800.0	7,097.8	10,792.6	7,097.8	72.7	72.6	-90.00	3,667.7	-145.0	495.0	349.9	145.16	3.410			
10,900.0	7,097.3	10,892.6	7,097.3	74.6	74.5	-90.00	3,767.7	-144.5	495.0	346.1	148.91	3.325			
11,000.0	7,096.9	10,992.6	7,096.9	76.5	76.3	-90.00	3,867.7	-144.1	495.0	342.4	152.65	3.243			
11,100.0	7,096.4	11,092.6	7,096.4	78.3	78.2	-90.00	3,967.7	-143.7	495.0	338.6	156.41	3.165			
11,200.0	7,095.9	11,192.6	7,095.9	80.2	80.1	-90.00	4,067.7	-143.3	495.0	334.9	160.16	3.091			
11,300.0	7,095.5	11,292.6	7,095.5	82.1	82.0	-90.00	4,167.7	-142.9	495.0	331.1	163.92	3.020			
11,400.0	7,095.0	11,392.6	7,095.0	84.0	83.9	-90.00	4,267.7	-142.5	495.0	327.4	167.68	2.952			
11,500.0	7,094.5	11,492.6	7,094.5	85.8	85.7	-90.00	4,367.7	-142.0	495.0	323.6	171.45	2.887			
11,600.0	7,094.0	11,592.6	7,094.0	87.7	87.6	-90.00	4,467.7	-141.6	495.0	319.8	175.22	2.825			
11,700.0	7,093.6	11,692.6	7,093.6	89.6	89.5	-90.00	4,567.7	-141.2	495.0	316.0	178.99	2.766			
11,716.4	7,093.5	11,709.0	7,093.5	89.9	89.8	-90.00	4,584.0	-141.1	495.0	315.4	179.60	2.756			
11,717.3	7,093.5	11,709.2	7,093.5	89.9	89.8	-90.00	4,584.3	-141.1	495.0	315.4	179.62	2.756 SF			

Company:	Verdad Oil & Gas Corporation	Local Co-ordinate Reference:	Well Meehl 01N-65W-24-6N
Project:	SEC.24-T1N-R65W	TVD Reference:	WELL @ 5038.5ft (RKB - 16.5')
Reference Site:	Meehl 01N-65W-24 Pad Sec.24-T01N-R65W	MD Reference:	WELL @ 5038.5ft (RKB - 16.5')
Site Error:	0.0ft	North Reference:	True
Reference Well:	Meehl 01N-65W-24-6N	Survey Calculation Method:	Minimum Curvature
Well Error:	0.0ft	Output errors are at	2.00 sigma
Reference Wellbore	Wellbore #1	Database:	landmark
Reference Design:	Plan #1 (10-17-14)	Offset TVD Reference:	Offset Datum

Offset Design													Offset Site Error:	0.0ft	
Survey Program: 0-MWD													Offset Well Error:		0.0ft
Reference				Offset			Semi Major Axis			Distance				Warning	
Measured Depth (ft)	Vertical Depth (ft)	Measured Depth (ft)	Vertical Depth (ft)	Reference (ft)	Offset (ft)	Highside Toolface (°)	Offset Wellbore Centre +N/-S (ft)	+E/-W (ft)	Between Centres (ft)	Between Ellipses (ft)	Minimum Separation (ft)	Separation Factor			
0.0	0.0	0.0	0.0	0.0	0.0	-89.88	0.1	-30.0	30.0						
100.0	100.0	100.0	100.0	0.1	0.1	-89.88	0.1	-30.0	30.0	29.7	0.22	133.313			
200.0	200.0	200.0	200.0	0.3	0.3	-89.88	0.1	-30.0	30.0	29.3	0.67	44.438			
300.0	300.0	300.0	300.0	0.6	0.6	-89.88	0.1	-30.0	30.0	28.8	1.12	26.663			
400.0	400.0	400.0	400.0	0.8	0.8	-89.88	0.1	-30.0	30.0	28.4	1.57	19.045			
500.0	500.0	500.0	500.0	1.0	1.0	-89.88	0.1	-30.0	30.0	27.9	2.02	14.813			
600.0	600.0	600.0	600.0	1.2	1.2	-89.88	0.1	-30.0	30.0	27.5	2.47	12.119			
700.0	700.0	700.0	700.0	1.5	1.5	-89.88	0.1	-30.0	30.0	27.0	2.92	10.255			
800.0	800.0	800.0	800.0	1.7	1.7	-89.88	0.1	-30.0	30.0	26.6	3.37	8.888			
900.0	900.0	900.0	900.0	1.9	1.9	-89.88	0.1	-30.0	30.0	26.1	3.82	7.842			
1,000.0	1,000.0	1,000.0	1,000.0	2.1	2.1	-89.88	0.1	-30.0	30.0	25.7	4.27	7.016			
1,100.0	1,100.0	1,100.0	1,100.0	2.4	2.4	-89.88	0.1	-30.0	30.0	25.2	4.72	6.348			
1,200.0	1,200.0	1,200.0	1,200.0	2.6	2.6	-89.88	0.1	-30.0	30.0	24.8	5.17	5.796			
1,300.0	1,300.0	1,300.0	1,300.0	2.8	2.8	-89.88	0.1	-30.0	30.0	24.3	5.62	5.333			
1,400.0	1,400.0	1,400.0	1,400.0	3.0	3.0	-89.88	0.1	-30.0	30.0	23.9	6.07	4.938 CC, ES			
1,500.0	1,500.0	1,500.0	1,500.0	3.2	3.3	148.49	0.1	-30.0	31.4	24.9	6.49	4.841			
1,600.0	1,599.8	1,599.8	1,599.8	3.4	3.5	152.80	0.1	-30.0	36.0	29.1	6.90	5.221			
1,700.0	1,699.5	1,699.5	1,699.5	3.6	3.7	157.94	0.1	-30.0	43.9	36.6	7.30	6.022			
1,800.0	1,798.7	1,798.7	1,798.7	3.8	3.9	162.56	0.1	-30.0	55.2	47.5	7.70	7.169			
1,900.0	1,897.9	1,899.0	1,899.0	4.1	4.1	164.50	-1.6	-29.7	66.6	58.5	8.09	8.228			
2,000.0	1,997.1	1,999.6	1,999.4	4.3	4.3	163.53	-6.8	-28.9	76.5	68.0	8.47	9.028			
2,100.0	2,096.3	2,100.3	2,099.8	4.6	4.5	160.62	-15.5	-27.6	85.0	76.1	8.87	9.580			
2,200.0	2,195.5	2,200.3	2,199.1	4.9	4.7	156.57	-27.0	-25.8	92.6	83.3	9.29	9.971			
2,300.0	2,294.7	2,299.8	2,297.9	5.1	4.9	153.00	-38.7	-24.1	100.6	90.9	9.74	10.335			
2,400.0	2,393.9	2,399.3	2,396.7	5.4	5.1	149.97	-50.4	-22.3	108.9	98.7	10.20	10.676			
2,500.0	2,493.1	2,498.8	2,495.5	5.7	5.3	147.37	-62.1	-20.5	117.5	106.8	10.69	10.993			
2,600.0	2,592.3	2,598.3	2,594.2	6.0	5.6	145.13	-73.8	-18.7	126.3	115.1	11.19	11.285			
2,700.0	2,691.5	2,697.8	2,693.0	6.3	5.8	143.18	-85.5	-16.9	135.2	123.5	11.71	11.552			
2,800.0	2,790.7	2,797.3	2,791.8	6.6	6.1	141.48	-97.2	-15.1	144.3	132.1	12.23	11.797			
2,900.0	2,889.9	2,896.8	2,890.6	6.9	6.3	139.98	-108.9	-13.3	153.5	140.8	12.77	12.020			
3,000.0	2,989.1	2,996.3	2,989.4	7.2	6.6	138.65	-120.6	-11.5	162.8	149.5	13.32	12.224			
3,100.0	3,088.3	3,095.8	3,088.2	7.5	6.9	137.46	-132.3	-9.8	172.2	158.3	13.87	12.411			
3,200.0	3,187.5	3,195.3	3,187.0	7.8	7.1	136.40	-144.1	-8.0	181.6	167.2	14.44	12.582			
3,300.0	3,286.7	3,294.8	3,285.8	8.1	7.4	135.44	-155.8	-6.2	191.1	176.1	15.00	12.739			
3,400.0	3,385.9	3,394.3	3,384.6	8.4	7.7	134.57	-167.5	-4.4	200.7	185.1	15.58	12.883			
3,500.0	3,485.1	3,493.8	3,483.4	8.8	8.0	133.78	-179.2	-2.6	210.2	194.1	16.15	13.016			
3,600.0	3,584.3	3,593.3	3,582.2	9.1	8.3	133.06	-190.9	-0.8	219.9	203.1	16.73	13.138			
3,700.0	3,683.5	3,693.0	3,681.1	9.4	8.5	132.42	-202.5	1.0	229.5	212.2	17.31	13.255			
3,800.0	3,782.7	3,793.3	3,781.0	9.7	8.8	132.41	-211.9	2.4	238.9	221.1	17.84	13.392			
3,900.0	3,881.9	3,893.5	3,881.1	10.0	9.0	133.22	-217.7	3.3	248.1	229.7	18.33	13.535			
4,000.0	3,981.1	3,993.5	3,981.0	10.3	9.2	134.75	-220.1	3.6	257.0	238.3	18.77	13.693			
4,100.0	4,080.3	4,092.8	4,080.3	10.7	9.4	136.66	-220.1	3.6	266.1	246.9	19.18	13.872			
4,200.0	4,179.5	4,192.0	4,179.5	11.0	9.6	138.46	-220.1	3.6	275.5	255.9	19.59	14.060			
4,300.0	4,278.7	4,291.2	4,278.7	11.3	9.8	140.14	-220.1	3.6	285.1	265.1	20.00	14.253			
4,400.0	4,377.9	4,390.4	4,377.9	11.6	10.0	141.71	-220.1	3.6	294.9	274.5	20.41	14.450			
4,500.0	4,477.1	4,489.6	4,477.1	12.0	10.2	143.18	-220.1	3.6	305.0	284.2	20.82	14.650			
4,600.0	4,576.3	4,588.8	4,576.3	12.3	10.3	144.57	-220.1	3.6	315.0	293.8	21.23	14.840			
4,700.0	4,675.8	4,688.3	4,675.8	12.5	10.5	145.64	-220.1	3.6	322.9	301.3	21.60	14.946			
4,800.0	4,775.7	4,788.1	4,775.7	12.7	10.7	146.29	-220.1	3.6	327.9	305.9	21.97	14.926			
4,900.0	4,875.6	4,888.1	4,875.6	12.9	10.9	146.57	-220.1	3.6	330.1	307.8	22.33	14.784			
5,000.0	4,975.6	4,988.1	4,975.6	13.0	11.1	-90.06	-220.1	3.6	330.2	307.4	22.71	14.535			
5,100.0	5,075.6	5,088.1	5,075.6	13.2	11.3	-90.06	-220.1	3.6	330.2	307.1	23.10	14.294			

CC - Min centre to center distance or convergent point, SF - min separation factor, ES - min ellipse separation

Company:	Verdad Oil & Gas Corporation	Local Co-ordinate Reference:	Well Meehl 01N-65W-24-6N
Project:	SEC.24-T1N-R65W	TVD Reference:	WELL @ 5038.5ft (RKB - 16.5')
Reference Site:	Meehl 01N-65W-24 Pad Sec.24-T01N-R65W	MD Reference:	WELL @ 5038.5ft (RKB - 16.5')
Site Error:	0.0ft	North Reference:	True
Reference Well:	Meehl 01N-65W-24-6N	Survey Calculation Method:	Minimum Curvature
Well Error:	0.0ft	Output errors are at	2.00 sigma
Reference Wellbore	Wellbore #1	Database:	landmark
Reference Design:	Plan #1 (10-17-14)	Offset TVD Reference:	Offset Datum

Offset Design													Offset Site Error:	0.0ft	
Survey Program: 0-MWD													Offset Well Error:		0.0ft
Reference		Offset		Semi Major Axis			Distance						Warning		
Measured Depth (ft)	Vertical Depth (ft)	Measured Depth (ft)	Vertical Depth (ft)	Reference (ft)	Offset (ft)	Highside Toolface (°)	Offset Wellbore Centre +N/-S (ft)	+E/-W (ft)	Between Centres (ft)	Between Ellipses (ft)	Minimum Separation (ft)	Separation Factor			
5,200.0	5,175.6	5,188.1	5,175.6	13.4	11.5	-90.06	-220.1	3.6	330.2	306.7	23.49	14.059			
5,300.0	5,275.6	5,288.1	5,275.6	13.5	11.7	-90.06	-220.1	3.6	330.2	306.3	23.87	13.830			
5,400.0	5,375.6	5,388.1	5,375.6	13.7	11.9	-90.06	-220.1	3.6	330.2	305.9	24.26	13.607			
5,500.0	5,475.6	5,488.1	5,475.6	13.9	12.1	-90.06	-220.1	3.6	330.2	305.5	24.66	13.390			
5,600.0	5,575.6	5,588.1	5,575.6	14.1	12.3	-90.06	-220.1	3.6	330.2	305.1	25.05	13.180			
5,700.0	5,675.6	5,688.1	5,675.6	14.2	12.5	-90.06	-220.1	3.6	330.2	304.7	25.45	12.974			
5,800.0	5,775.6	5,788.1	5,775.6	14.4	12.8	-90.06	-220.1	3.6	330.2	304.3	25.85	12.774			
5,900.0	5,875.6	5,888.1	5,875.6	14.6	13.0	-90.06	-220.1	3.6	330.2	303.9	26.25	12.580			
6,000.0	5,975.6	5,988.1	5,975.6	14.8	13.2	-90.06	-220.1	3.6	330.2	303.5	26.65	12.391			
6,100.0	6,075.6	6,088.1	6,075.6	15.0	13.4	-90.06	-220.1	3.6	330.2	303.1	27.05	12.206			
6,200.0	6,175.6	6,188.1	6,175.6	15.1	13.6	-90.06	-220.1	3.6	330.2	302.7	27.45	12.026			
6,300.0	6,275.6	6,288.1	6,275.6	15.3	13.8	-90.06	-220.1	3.6	330.2	302.3	27.86	11.851			
6,400.0	6,375.6	6,388.1	6,375.6	15.5	14.0	-90.06	-220.1	3.6	330.2	301.9	28.27	11.681			
6,500.0	6,475.6	6,488.1	6,475.6	15.7	14.2	-90.06	-220.1	3.6	330.2	301.5	28.67	11.514			
6,600.0	6,575.6	6,588.1	6,575.6	15.9	14.4	-90.06	-220.1	3.6	330.2	301.1	29.08	11.352			
6,700.0	6,675.3	6,688.4	6,675.5	16.0	14.6	-90.29	-213.5	3.7	330.2	300.7	29.43	11.219			
6,800.0	6,771.9	6,788.7	6,772.4	16.2	14.7	-90.28	-188.2	3.8	330.2	300.5	29.63	11.142			
6,900.0	6,861.9	6,889.0	6,862.7	16.2	14.8	-90.26	-144.8	4.0	330.2	300.4	29.75	11.098			
7,000.0	6,942.1	6,989.3	6,942.9	16.2	14.8	-90.22	-84.9	4.2	330.2	300.3	29.88	11.050			
7,100.0	7,009.4	7,089.5	7,010.2	16.2	15.0	-90.18	-10.8	4.5	330.2	300.0	30.15	10.952			
7,200.0	7,061.4	7,189.7	7,062.1	16.2	15.2	-90.13	74.7	4.9	330.2	299.5	30.67	10.765			
7,300.0	7,096.2	7,289.8	7,096.6	16.4	15.7	-90.08	168.5	5.3	330.2	298.6	31.53	10.470			
7,400.0	7,112.5	7,389.8	7,112.6	16.8	16.3	-90.02	267.1	5.7	330.2	297.4	32.76	10.079			
7,500.0	7,113.4	7,489.8	7,113.4	17.6	17.1	-90.00	367.1	6.1	330.2	295.8	34.33	9.618			
7,600.0	7,112.9	7,589.8	7,112.9	18.6	18.0	-90.00	467.1	6.5	330.2	293.9	36.23	9.113			
7,700.0	7,112.4	7,689.8	7,112.4	19.7	19.1	-90.00	567.1	6.9	330.2	291.7	38.42	8.594			
7,800.0	7,112.0	7,789.8	7,112.0	20.9	20.4	-90.00	667.1	7.4	330.2	289.3	40.85	8.082			
7,900.0	7,111.5	7,889.8	7,111.5	22.2	21.7	-90.00	767.1	7.8	330.2	286.7	43.48	7.593			
8,000.0	7,111.0	7,989.8	7,111.0	23.5	23.1	-90.00	867.1	8.2	330.1	283.9	46.28	7.134			
8,100.0	7,110.5	8,089.8	7,110.5	25.0	24.6	-90.00	967.1	8.6	330.1	280.9	49.22	6.708			
8,200.0	7,110.1	8,189.8	7,110.1	26.5	26.1	-90.00	1,067.1	9.0	330.1	277.9	52.27	6.316			
8,300.0	7,109.6	8,289.8	7,109.6	28.1	27.7	-90.00	1,167.1	9.5	330.1	274.7	55.42	5.957			
8,400.0	7,109.1	8,389.8	7,109.1	29.7	29.3	-90.00	1,267.1	9.9	330.1	271.5	58.65	5.629			
8,500.0	7,108.7	8,489.8	7,108.7	31.3	31.0	-90.00	1,367.1	10.3	330.1	268.2	61.95	5.329			
8,600.0	7,108.2	8,589.8	7,108.2	33.0	32.6	-90.00	1,467.1	10.7	330.1	264.8	65.31	5.055			
8,700.0	7,107.7	8,689.8	7,107.7	34.7	34.3	-90.00	1,567.1	11.1	330.1	261.4	68.71	4.805			
8,800.0	7,107.2	8,789.8	7,107.2	36.4	36.1	-90.00	1,667.1	11.6	330.1	258.0	72.16	4.575			
8,900.0	7,106.8	8,889.8	7,106.8	38.1	37.8	-90.00	1,767.1	12.0	330.1	254.5	75.65	4.364			
9,000.0	7,106.3	8,989.8	7,106.3	39.8	39.6	-90.00	1,867.1	12.4	330.1	251.0	79.16	4.170			
9,100.0	7,105.8	9,089.8	7,105.8	41.6	41.3	-90.00	1,967.1	12.8	330.1	247.4	82.71	3.992			
9,200.0	7,105.4	9,189.8	7,105.4	43.4	43.1	-90.00	2,067.0	13.2	330.1	243.9	86.28	3.826			
9,300.0	7,104.9	9,289.8	7,104.9	45.2	44.9	-90.00	2,167.0	13.7	330.1	240.3	89.87	3.674			
9,400.0	7,104.4	9,389.8	7,104.4	47.0	46.7	-90.00	2,267.0	14.1	330.1	236.7	93.48	3.532			
9,500.0	7,103.9	9,489.8	7,103.9	48.8	48.5	-90.00	2,367.0	14.5	330.1	233.0	97.10	3.400			
9,600.0	7,103.5	9,589.8	7,103.5	50.6	50.4	-90.00	2,467.0	14.9	330.1	229.4	100.74	3.277			
9,700.0	7,103.0	9,689.8	7,103.0	52.4	52.2	-90.00	2,567.0	15.3	330.1	225.7	104.40	3.162			
9,800.0	7,102.5	9,789.8	7,102.5	54.2	54.0	-90.00	2,667.0	15.8	330.1	222.1	108.06	3.055			
9,900.0	7,102.1	9,889.8	7,102.1	56.1	55.9	-90.00	2,767.0	16.2	330.1	218.4	111.74	2.954			
10,000.0	7,101.6	9,989.8	7,101.6	57.9	57.7	-90.00	2,867.0	16.6	330.1	214.7	115.43	2.860			
10,100.0	7,101.1	10,089.8	7,101.1	59.7	59.6	-90.00	2,967.0	17.0	330.1	211.0	119.12	2.771			
10,200.0	7,100.6	10,189.8	7,100.6	61.6	61.4	-90.00	3,067.0	17.4	330.1	207.3	122.82	2.688			
10,300.0	7,100.2	10,289.8	7,100.2	63.4	63.3	-90.00	3,167.0	17.8	330.1	203.6	126.54	2.609			

CC - Min centre to center distance or convergent point, SF - min separation factor, ES - min ellipse separation

Company:	Verdad Oil & Gas Corporation	Local Co-ordinate Reference:	Well Meehl 01N-65W-24-6N
Project:	SEC.24-T1N-R65W	TVD Reference:	WELL @ 5038.5ft (RKB - 16.5')
Reference Site:	Meehl 01N-65W-24 Pad Sec.24-T01N-R65W	MD Reference:	WELL @ 5038.5ft (RKB - 16.5')
Site Error:	0.0ft	North Reference:	True
Reference Well:	Meehl 01N-65W-24-6N	Survey Calculation Method:	Minimum Curvature
Well Error:	0.0ft	Output errors are at	2.00 sigma
Reference Wellbore	Wellbore #1	Database:	landmark
Reference Design:	Plan #1 (10-17-14)	Offset TVD Reference:	Offset Datum

Offset Design													Offset Site Error:	0.0 ft	
Survey Program: 0-MWD													Offset Well Error:		0.0 ft
Reference		Offset		Semi Major Axis			Distance						Warning		
Measured Depth (ft)	Vertical Depth (ft)	Measured Depth (ft)	Vertical Depth (ft)	Reference (ft)	Offset (ft)	Highside Toolface (°)	Offset Wellbore Centre +N/-S (ft)	+E/-W (ft)	Between Centres (ft)	Between Ellipses (ft)	Minimum Separation (ft)	Separation Factor			
10,400.0	7,099.7	10,389.8	7,099.7	65.3	65.1	-90.00	3,267.0	18.3	330.1	199.9	130.25	2.534			
10,500.0	7,099.2	10,489.8	7,099.2	67.1	67.0	-90.00	3,367.0	18.7	330.1	196.1	133.98	2.464			
10,600.0	7,098.8	10,589.8	7,098.8	69.0	68.9	-90.00	3,467.0	19.1	330.1	192.4	137.71	2.397			
10,700.0	7,098.3	10,689.8	7,098.3	70.9	70.7	-90.00	3,567.0	19.5	330.1	188.7	141.44	2.334			
10,800.0	7,097.8	10,789.8	7,097.8	72.7	72.6	-90.00	3,667.0	19.9	330.1	184.9	145.18	2.274			
10,900.0	7,097.3	10,889.8	7,097.3	74.6	74.5	-90.00	3,767.0	20.4	330.1	181.2	148.93	2.217			
11,000.0	7,096.9	10,989.8	7,096.9	76.5	76.3	-90.00	3,867.0	20.8	330.1	177.4	152.68	2.162			
11,100.0	7,096.4	11,089.8	7,096.4	78.3	78.2	-90.00	3,967.0	21.2	330.1	173.7	156.43	2.110			
11,200.0	7,095.9	11,189.8	7,095.9	80.2	80.1	-90.00	4,067.0	21.6	330.1	169.9	160.18	2.061			
11,300.0	7,095.5	11,289.8	7,095.5	82.1	82.0	-90.00	4,167.0	22.0	330.1	166.2	163.94	2.014			
11,400.0	7,095.0	11,389.8	7,095.0	84.0	83.9	-90.00	4,267.0	22.5	330.1	162.4	167.71	1.968			
11,500.0	7,094.5	11,489.8	7,094.5	85.8	85.7	-90.00	4,367.0	22.9	330.1	158.6	171.47	1.925			
11,600.0	7,094.0	11,589.8	7,094.0	87.7	87.6	-90.00	4,467.0	23.3	330.1	154.9	175.24	1.884			
11,700.0	7,093.6	11,689.8	7,093.6	89.6	89.5	-90.00	4,567.0	23.7	330.1	151.1	179.01	1.844			
11,713.0	7,093.5	11,702.9	7,093.5	89.9	89.8	-90.00	4,580.0	23.8	330.1	150.6	179.50	1.839			
11,717.3	7,093.5	11,707.1	7,093.5	89.9	89.8	-90.00	4,584.3	23.8	330.1	150.5	179.66	1.837 SF			

Company:	Verdad Oil & Gas Corporation	Local Co-ordinate Reference:	Well Meehl 01N-65W-24-6N
Project:	SEC.24-T1N-R65W	TVD Reference:	WELL @ 5038.5ft (RKB - 16.5')
Reference Site:	Meehl 01N-65W-24 Pad Sec.24-T01N-R65W	MD Reference:	WELL @ 5038.5ft (RKB - 16.5')
Site Error:	0.0ft	North Reference:	True
Reference Well:	Meehl 01N-65W-24-6N	Survey Calculation Method:	Minimum Curvature
Well Error:	0.0ft	Output errors are at	2.00 sigma
Reference Wellbore	Wellbore #1	Database:	landmark
Reference Design:	Plan #1 (10-17-14)	Offset TVD Reference:	Offset Datum

Offset Design													Offset Site Error:	0.0 ft		
Survey Program: 0-MWD													Meehl 01N-65W-24 Pad Sec.24-T01N-R65W - Meehl 01N-65W-24-5C - Wellbore #1 - Plan #1 (10-17-1		Offset Well Error:	0.0 ft
Reference		Offset		Semi Major Axis			Distance						Warning			
Measured Depth (ft)	Vertical Depth (ft)	Measured Depth (ft)	Vertical Depth (ft)	Reference (ft)	Offset (ft)	Highside Toolface (°)	Offset Wellbore Centre +N/-S (ft)	+E/-W (ft)	Between Centres (ft)	Between Ellipses (ft)	Minimum Separation (ft)	Separation Factor				
0.0	0.0	0.0	0.0	0.0	0.0	-89.82	0.0	-14.8	14.8	14.8	0.00	N/A				
100.0	100.0	100.0	100.0	0.1	0.1	-89.82	0.0	-14.8	14.8	14.6	0.22	66.034				
200.0	200.0	200.0	200.0	0.3	0.3	-89.82	0.0	-14.8	14.8	14.2	0.67	22.011				
300.0	300.0	300.0	300.0	0.6	0.6	-89.82	0.0	-14.8	14.8	13.7	1.12	13.207				
400.0	400.0	400.0	400.0	0.8	0.8	-89.82	0.0	-14.8	14.8	13.3	1.57	9.433				
500.0	500.0	500.0	500.0	1.0	1.0	-89.82	0.0	-14.8	14.8	12.8	2.02	7.337				
600.0	600.0	600.0	600.0	1.2	1.2	-89.82	0.0	-14.8	14.8	12.4	2.47	6.003				
700.0	700.0	700.0	700.0	1.5	1.5	-89.82	0.0	-14.8	14.8	11.9	2.92	5.080				
800.0	800.0	800.0	800.0	1.7	1.7	-89.82	0.0	-14.8	14.8	11.5	3.37	4.402				
900.0	900.0	900.0	900.0	1.9	1.9	-89.82	0.0	-14.8	14.8	11.0	3.82	3.884				
1,000.0	1,000.0	1,000.0	1,000.0	2.1	2.1	-89.82	0.0	-14.8	14.8	10.6	4.27	3.475				
1,100.0	1,100.0	1,100.0	1,100.0	2.4	2.4	-89.82	0.0	-14.8	14.8	10.1	4.72	3.144				
1,200.0	1,200.0	1,200.0	1,200.0	2.6	2.6	-89.82	0.0	-14.8	14.8	9.7	5.17	2.871				
1,300.0	1,300.0	1,300.0	1,300.0	2.8	2.8	-89.82	0.0	-14.8	14.8	9.2	5.62	2.641				
1,400.0	1,400.0	1,400.0	1,400.0	3.0	3.0	-89.82	0.0	-14.8	14.8	8.8	6.07	2.446 CC, ES				
1,500.0	1,500.0	1,500.0	1,500.0	3.2	3.3	150.15	0.0	-14.8	16.3	9.8	6.49	2.515				
1,600.0	1,599.8	1,599.8	1,599.8	3.4	3.5	157.23	0.0	-14.8	21.0	14.1	6.90	3.050				
1,700.0	1,699.5	1,699.5	1,699.5	3.6	3.7	163.80	0.0	-14.8	29.3	22.0	7.29	4.012				
1,800.0	1,798.7	1,798.7	1,798.7	3.8	3.9	168.45	0.0	-14.8	40.9	33.2	7.70	5.311				
1,900.0	1,897.9	1,897.9	1,897.9	4.1	4.2	171.17	0.0	-14.8	53.3	45.2	8.12	6.570				
2,000.0	1,997.1	1,997.1	1,997.1	4.3	4.4	172.86	0.0	-14.8	65.9	57.3	8.54	7.708				
2,100.0	2,096.3	2,098.8	2,098.8	4.6	4.6	173.54	-1.3	-13.8	76.9	67.9	8.95	8.590				
2,200.0	2,195.5	2,201.1	2,201.0	4.9	4.8	173.09	-5.4	-10.3	84.7	75.3	9.34	9.064				
2,300.0	2,294.7	2,303.8	2,303.3	5.1	5.0	171.75	-12.3	-4.5	89.2	79.5	9.74	9.157				
2,400.0	2,393.9	2,405.5	2,404.2	5.4	5.2	169.63	-21.8	3.3	90.8	80.7	10.15	8.944				
2,500.0	2,493.1	2,505.5	2,503.3	5.7	5.4	167.42	-31.5	11.5	92.0	81.4	10.58	8.698				
2,600.0	2,592.3	2,605.4	2,602.4	6.0	5.6	165.28	-41.3	19.6	93.3	82.3	11.02	8.471				
2,700.0	2,691.5	2,705.3	2,701.6	6.3	5.8	163.19	-51.1	27.7	94.8	83.3	11.47	8.263				
2,800.0	2,790.7	2,805.2	2,800.7	6.6	6.1	161.17	-60.8	35.9	96.3	84.4	11.94	8.070				
2,900.0	2,889.9	2,905.2	2,899.8	6.9	6.3	159.22	-70.6	44.0	98.0	85.6	12.42	7.893				
3,000.0	2,989.1	3,005.1	2,998.9	7.2	6.6	157.33	-80.4	52.1	99.8	86.9	12.91	7.728				
3,100.0	3,088.3	3,105.0	3,098.0	7.5	6.9	155.52	-90.1	60.3	101.7	88.3	13.42	7.576				
3,200.0	3,187.5	3,205.0	3,197.2	7.8	7.2	153.77	-99.9	68.4	103.7	89.8	13.95	7.435				
3,300.0	3,286.7	3,304.9	3,296.3	8.1	7.4	152.09	-109.7	76.6	105.8	91.3	14.48	7.304				
3,400.0	3,385.9	3,404.8	3,395.4	8.4	7.7	150.47	-119.5	84.7	108.0	92.9	15.03	7.183				
3,500.0	3,485.1	3,504.8	3,494.5	8.8	8.0	148.92	-129.2	92.8	110.2	94.6	15.59	7.070				
3,600.0	3,584.3	3,604.7	3,593.6	9.1	8.3	147.44	-139.0	101.0	112.6	96.4	16.16	6.966				
3,700.0	3,683.5	3,704.6	3,692.8	9.4	8.6	146.01	-148.8	109.1	115.0	98.2	16.74	6.869				
3,800.0	3,782.7	3,804.6	3,791.9	9.7	8.9	144.64	-158.5	117.2	117.4	100.1	17.32	6.779				
3,900.0	3,881.9	3,904.5	3,891.0	10.0	9.2	143.34	-168.3	125.4	120.0	102.1	17.92	6.695				
4,000.0	3,981.1	4,004.4	3,990.1	10.3	9.5	142.08	-178.1	133.5	122.6	104.1	18.52	6.617				
4,100.0	4,080.3	4,104.4	4,089.2	10.7	9.8	140.88	-187.8	141.6	125.2	106.1	19.13	6.545				
4,200.0	4,179.5	4,204.3	4,188.3	11.0	10.1	139.73	-197.6	149.8	127.9	108.2	19.75	6.478				
4,300.0	4,278.7	4,303.0	4,286.3	11.3	10.4	138.81	-206.9	157.5	130.9	110.6	20.34	6.437				
4,400.0	4,377.9	4,400.0	4,382.9	11.6	10.6	139.00	-213.8	163.3	135.6	114.7	20.83	6.507				
4,500.0	4,477.1	4,497.6	4,480.4	12.0	10.8	140.32	-218.2	167.0	142.0	120.8	21.25	6.686				
4,600.0	4,576.3	4,594.3	4,577.0	12.3	11.0	142.52	-220.1	168.5	150.3	128.8	21.58	6.967				
4,700.0	4,675.8	4,693.2	4,675.8	12.5	11.2	144.67	-220.2	168.6	158.0	136.1	21.86	7.228				
4,800.0	4,775.7	4,793.0	4,775.7	12.7	11.4	145.96	-220.2	168.6	163.0	140.8	22.16	7.354				
4,900.0	4,875.6	4,892.9	4,875.6	12.9	11.6	146.49	-220.2	168.6	165.2	142.7	22.49	7.344				
5,000.0	4,975.6	4,992.9	4,975.6	13.0	11.7	-90.12	-220.2	168.6	165.2	142.4	22.87	7.224				
5,100.0	5,075.6	5,092.9	5,075.6	13.2	11.9	-90.12	-220.2	168.6	165.2	142.0	23.25	7.106				

CC - Min centre to center distance or convergent point, SF - min separation factor, ES - min ellipse separation

Company:	Verdad Oil & Gas Corporation	Local Co-ordinate Reference:	Well Meehl 01N-65W-24-6N
Project:	SEC.24-T1N-R65W	TVD Reference:	WELL @ 5038.5ft (RKB - 16.5')
Reference Site:	Meehl 01N-65W-24 Pad Sec.24-T01N-R65W	MD Reference:	WELL @ 5038.5ft (RKB - 16.5')
Site Error:	0.0ft	North Reference:	True
Reference Well:	Meehl 01N-65W-24-6N	Survey Calculation Method:	Minimum Curvature
Well Error:	0.0ft	Output errors are at	2.00 sigma
Reference Wellbore	Wellbore #1	Database:	landmark
Reference Design:	Plan #1 (10-17-14)	Offset TVD Reference:	Offset Datum

Offset Design													Offset Site Error:	0.0ft	
Survey Program: 0-MWD													Offset Well Error:		0.0ft
Reference		Offset		Semi Major Axis			Distance						Warning		
Measured Depth (ft)	Vertical Depth (ft)	Measured Depth (ft)	Vertical Depth (ft)	Reference (ft)	Offset (ft)	Highside Toolface (°)	Offset Wellbore Centre +N/-S (ft)	+E/-W (ft)	Between Centres (ft)	Between Ellipses (ft)	Minimum Separation (ft)	Separation Factor			
5,200.0	5,175.6	5,192.9	5,175.6	13.4	12.1	-90.12	-220.2	168.6	165.2	141.6	23.63	6.992			
5,300.0	5,275.6	5,292.9	5,275.6	13.5	12.3	-90.12	-220.2	168.6	165.2	141.2	24.02	6.880			
5,400.0	5,375.6	5,392.9	5,375.6	13.7	12.5	-90.12	-220.2	168.6	165.2	140.8	24.41	6.771			
5,500.0	5,475.6	5,492.9	5,475.6	13.9	12.7	-90.12	-220.2	168.6	165.2	140.4	24.79	6.665			
5,600.0	5,575.6	5,592.9	5,575.6	14.1	12.9	-90.12	-220.2	168.6	165.2	140.1	25.18	6.561			
5,700.0	5,675.6	5,692.9	5,675.6	14.2	13.1	-90.12	-220.2	168.6	165.2	139.7	25.58	6.460			
5,800.0	5,775.6	5,792.9	5,775.6	14.4	13.3	-90.12	-220.2	168.6	165.2	139.3	25.97	6.362			
5,900.0	5,875.6	5,892.9	5,875.6	14.6	13.5	-90.12	-220.2	168.6	165.2	138.9	26.37	6.267			
6,000.0	5,975.6	5,992.9	5,975.6	14.8	13.7	-90.12	-220.2	168.6	165.2	138.5	26.77	6.174			
6,100.0	6,075.6	6,092.9	6,075.6	15.0	13.9	-90.12	-220.2	168.6	165.2	138.1	27.17	6.083			
6,200.0	6,175.6	6,192.9	6,175.6	15.1	14.1	-90.12	-220.2	168.6	165.2	137.7	27.57	5.994			
6,300.0	6,275.6	6,292.9	6,275.6	15.3	14.3	-90.12	-220.2	168.6	165.2	137.3	27.97	5.908			
6,400.0	6,375.6	6,392.9	6,375.6	15.5	14.5	-90.12	-220.2	168.6	165.2	136.9	28.37	5.824			
6,500.0	6,475.6	6,492.9	6,475.6	15.7	14.7	-90.12	-220.2	168.6	165.2	136.5	28.78	5.742			
6,600.0	6,575.6	6,592.9	6,575.6	15.9	14.9	-90.12	-220.2	168.6	165.2	136.1	29.19	5.662			
6,631.3	6,606.9	6,624.2	6,606.9	15.9	15.0	-90.63	-220.2	168.6	165.2	135.9	29.31	5.639			
6,700.0	6,675.3	6,692.6	6,675.3	16.0	15.1	-92.61	-220.2	168.6	165.4	135.8	29.66	5.578			
6,800.0	6,771.9	6,789.2	6,771.9	16.2	15.3	-100.56	-220.2	168.6	168.5	138.2	30.26	5.567			
6,900.0	6,861.9	6,890.4	6,872.8	16.2	15.5	-111.57	-213.9	168.6	179.7	149.2	30.50	5.892			
7,000.0	6,942.1	7,002.6	6,981.0	16.2	15.6	-121.29	-184.9	168.7	197.1	167.3	29.82	6.612			
7,100.0	7,009.4	7,126.5	7,090.1	16.2	15.7	-129.07	-126.8	169.0	217.4	189.0	28.34	7.669			
7,200.0	7,061.4	7,263.5	7,191.0	16.2	15.7	-134.83	-34.8	169.3	236.7	210.0	26.64	8.885			
7,300.0	7,096.2	7,413.3	7,269.8	16.4	15.8	-138.58	92.0	169.9	251.4	225.9	25.48	9.867			
7,400.0	7,112.5	7,572.5	7,310.5	16.8	16.6	-140.30	245.2	170.5	258.8	233.1	25.67	10.079			
7,500.0	7,113.4	7,694.5	7,313.2	17.6	17.6	-140.42	367.1	171.1	259.3	232.4	26.91	9.634			
7,600.0	7,112.9	7,794.5	7,312.9	18.6	18.5	-140.44	467.1	171.5	259.4	231.1	28.26	9.179			
7,700.0	7,112.4	7,894.5	7,312.5	19.7	19.6	-140.46	567.1	171.9	259.5	229.7	29.78	8.713			
7,800.0	7,112.0	7,994.5	7,312.2	20.9	20.8	-140.48	667.1	172.3	259.6	228.1	31.46	8.251			
7,900.0	7,111.5	8,094.5	7,311.8	22.2	22.1	-140.50	767.1	172.8	259.6	226.4	33.27	7.804			
8,000.0	7,111.0	8,194.5	7,311.5	23.5	23.5	-140.51	867.1	173.2	259.7	224.5	35.19	7.381			
8,100.0	7,110.5	8,294.5	7,311.1	25.0	24.9	-140.53	967.1	173.6	259.8	222.6	37.20	6.984			
8,200.0	7,110.1	8,394.5	7,310.8	26.5	26.4	-140.55	1,067.1	174.0	259.9	220.6	39.29	6.615			
8,300.0	7,109.6	8,494.5	7,310.4	28.1	28.0	-140.57	1,167.1	174.5	260.0	218.6	41.45	6.272			
8,400.0	7,109.1	8,594.5	7,310.1	29.7	29.6	-140.59	1,267.1	174.9	260.1	216.4	43.67	5.956			
8,500.0	7,108.7	8,694.5	7,309.7	31.3	31.2	-140.60	1,367.1	175.3	260.2	214.3	45.93	5.665			
8,600.0	7,108.2	8,794.5	7,309.4	33.0	32.9	-140.62	1,467.1	175.7	260.3	212.0	48.23	5.396			
8,700.0	7,107.7	8,894.5	7,309.0	34.7	34.6	-140.64	1,567.1	176.2	260.4	209.8	50.57	5.149			
8,800.0	7,107.2	8,994.5	7,308.7	36.4	36.3	-140.66	1,667.1	176.6	260.5	207.5	52.94	4.920			
8,900.0	7,106.8	9,094.5	7,308.3	38.1	38.0	-140.68	1,767.1	177.0	260.5	205.2	55.33	4.709			
9,000.0	7,106.3	9,194.5	7,308.0	39.8	39.8	-140.70	1,867.1	177.4	260.6	202.9	57.75	4.513			
9,100.0	7,105.8	9,294.5	7,307.6	41.6	41.5	-140.71	1,967.1	177.9	260.7	200.5	60.19	4.332			
9,200.0	7,105.4	9,394.5	7,307.3	43.4	43.3	-140.73	2,067.1	178.3	260.8	198.2	62.64	4.164			
9,300.0	7,104.9	9,494.5	7,306.9	45.2	45.1	-140.75	2,167.1	178.7	260.9	195.8	65.11	4.007			
9,400.0	7,104.4	9,594.5	7,306.6	47.0	46.9	-140.77	2,267.1	179.1	261.0	193.4	67.59	3.861			
9,500.0	7,103.9	9,694.5	7,306.2	48.8	48.7	-140.79	2,367.1	179.6	261.1	191.0	70.09	3.725			
9,600.0	7,103.5	9,794.5	7,305.9	50.6	50.5	-140.80	2,467.1	180.0	261.2	188.6	72.59	3.598			
9,700.0	7,103.0	9,894.5	7,305.5	52.4	52.3	-140.82	2,567.1	180.4	261.3	186.2	75.11	3.479			
9,800.0	7,102.5	9,994.5	7,305.2	54.2	54.2	-140.84	2,667.1	180.8	261.4	183.7	77.63	3.367			
9,900.0	7,102.1	10,094.5	7,304.8	56.1	56.0	-140.86	2,767.1	181.3	261.5	181.3	80.16	3.262			
10,000.0	7,101.6	10,194.5	7,304.5	57.9	57.8	-140.88	2,867.1	181.7	261.5	178.9	82.69	3.163			
10,100.0	7,101.1	10,294.5	7,304.1	59.7	59.7	-140.89	2,967.1	182.1	261.6	176.4	85.23	3.070			
10,200.0	7,100.6	10,394.5	7,303.8	61.6	61.5	-140.91	3,067.1	182.5	261.7	173.9	87.78	2.982			

CC - Min centre to center distance or convergent point, SF - min separation factor, ES - min ellipse separation

Company:	Verdad Oil & Gas Corporation	Local Co-ordinate Reference:	Well Meehl 01N-65W-24-6N
Project:	SEC.24-T1N-R65W	TVD Reference:	WELL @ 5038.5ft (RKB - 16.5')
Reference Site:	Meehl 01N-65W-24 Pad Sec.24-T01N-R65W	MD Reference:	WELL @ 5038.5ft (RKB - 16.5')
Site Error:	0.0ft	North Reference:	True
Reference Well:	Meehl 01N-65W-24-6N	Survey Calculation Method:	Minimum Curvature
Well Error:	0.0ft	Output errors are at	2.00 sigma
Reference Wellbore	Wellbore #1	Database:	landmark
Reference Design:	Plan #1 (10-17-14)	Offset TVD Reference:	Offset Datum

Offset Design													Offset Site Error:	0.0 ft	
Survey Program: 0-MWD													Offset Well Error:		0.0 ft
Reference		Offset		Semi Major Axis			Distance						Warning		
Measured Depth (ft)	Vertical Depth (ft)	Measured Depth (ft)	Vertical Depth (ft)	Reference (ft)	Offset (ft)	Highside Toolface (°)	Offset Wellbore Centre +N/-S (ft)	+E/-W (ft)	Between Centres (ft)	Between Ellipses (ft)	Minimum Separation (ft)	Separation Factor			
10,300.0	7,100.2	10,494.5	7,303.4	63.4	63.4	-140.93	3,167.1	183.0	261.8	171.5	90.33	2.898			
10,400.0	7,099.7	10,594.5	7,303.1	65.3	65.2	-140.95	3,267.1	183.4	261.9	169.0	92.89	2.820			
10,500.0	7,099.2	10,694.5	7,302.7	67.1	67.1	-140.97	3,367.1	183.8	262.0	166.6	95.44	2.745			
10,600.0	7,098.8	10,794.5	7,302.4	69.0	69.0	-140.98	3,467.0	184.2	262.1	164.1	98.01	2.674			
10,700.0	7,098.3	10,894.5	7,302.0	70.9	70.8	-141.00	3,567.0	184.7	262.2	161.6	100.57	2.607			
10,800.0	7,097.8	10,994.5	7,301.7	72.7	72.7	-141.02	3,667.0	185.1	262.3	159.1	103.14	2.543			
10,900.0	7,097.3	11,094.5	7,301.3	74.6	74.6	-141.04	3,767.0	185.5	262.4	156.7	105.71	2.482			
11,000.0	7,096.9	11,194.5	7,301.0	76.5	76.4	-141.06	3,867.0	185.9	262.4	154.2	108.28	2.424			
11,100.0	7,096.4	11,294.5	7,300.6	78.3	78.3	-141.07	3,967.0	186.4	262.5	151.7	110.85	2.368			
11,200.0	7,095.9	11,394.5	7,300.3	80.2	80.2	-141.09	4,067.0	186.8	262.6	149.2	113.43	2.315			
11,300.0	7,095.5	11,494.5	7,300.0	82.1	82.1	-141.11	4,167.0	187.2	262.7	146.7	116.00	2.265			
11,400.0	7,095.0	11,594.5	7,299.6	84.0	83.9	-141.13	4,267.0	187.6	262.8	144.2	118.58	2.216			
11,500.0	7,094.5	11,694.5	7,299.3	85.8	85.8	-141.15	4,367.0	188.1	262.9	141.7	121.16	2.170			
11,600.0	7,094.0	11,794.5	7,298.9	87.7	87.7	-141.16	4,467.0	188.5	263.0	139.3	123.74	2.125			
11,700.0	7,093.6	11,894.5	7,298.6	89.6	89.6	-141.18	4,567.0	188.9	263.1	136.8	126.31	2.083			
11,703.6	7,093.6	11,898.0	7,298.5	89.7	89.6	-141.18	4,570.6	188.9	263.1	136.7	126.41	2.081			
11,717.3	7,093.5	11,910.2	7,298.5	89.9	89.8	-141.18	4,582.8	189.0	263.1	136.4	126.70	2.077 SF			

Company:	Verdad Oil & Gas Corporation	Local Co-ordinate Reference:	Well Meehl 01N-65W-24-6N
Project:	SEC.24-T1N-R65W	TVD Reference:	WELL @ 5038.5ft (RKB - 16.5')
Reference Site:	Meehl 01N-65W-24 Pad Sec.24-T01N-R65W	MD Reference:	WELL @ 5038.5ft (RKB - 16.5')
Site Error:	0.0ft	North Reference:	True
Reference Well:	Meehl 01N-65W-24-6N	Survey Calculation Method:	Minimum Curvature
Well Error:	0.0ft	Output errors are at	2.00 sigma
Reference Wellbore	Wellbore #1	Database:	landmark
Reference Design:	Plan #1 (10-17-14)	Offset TVD Reference:	Offset Datum

Offset Design													Offset Site Error:	0.0ft	
Survey Program: 0-MWD													Offset Well Error:		0.0ft
Reference				Offset			Semi Major Axis			Distance			Warning		
Measured Depth (ft)	Vertical Depth (ft)	Measured Depth (ft)	Vertical Depth (ft)	Reference (ft)	Offset (ft)	Highside Toolface (°)	Offset Wellbore Centre +N/-S (ft)	+E/-W (ft)	Between Centres (ft)	Between Ellipses (ft)	Minimum Separation (ft)	Separation Factor			
0.0	0.0	0.0	0.0	0.0	0.0	89.87	0.0	15.1	15.1	15.1	0.00	N/A			
100.0	100.0	100.0	100.0	0.1	0.1	89.87	0.0	15.1	15.1	14.9	0.22	67.280			
200.0	200.0	200.0	200.0	0.3	0.3	89.87	0.0	15.1	15.1	14.4	0.67	22.427			
300.0	300.0	300.0	300.0	0.6	0.6	89.87	0.0	15.1	15.1	14.0	1.12	13.456			
400.0	400.0	400.0	400.0	0.8	0.8	89.87	0.0	15.1	15.1	13.5	1.57	9.611			
500.0	500.0	500.0	500.0	1.0	1.0	89.87	0.0	15.1	15.1	13.1	2.02	7.476			
600.0	600.0	600.0	600.0	1.2	1.2	89.87	0.0	15.1	15.1	12.6	2.47	6.116			
700.0	700.0	700.0	700.0	1.5	1.5	89.87	0.0	15.1	15.1	12.2	2.92	5.175			
800.0	800.0	800.0	800.0	1.7	1.7	89.87	0.0	15.1	15.1	11.8	3.37	4.485			
900.0	900.0	900.0	900.0	1.9	1.9	89.87	0.0	15.1	15.1	11.3	3.82	3.958			
1,000.0	1,000.0	1,000.0	1,000.0	2.1	2.1	89.87	0.0	15.1	15.1	10.9	4.27	3.541			
1,100.0	1,100.0	1,100.0	1,100.0	2.4	2.4	89.87	0.0	15.1	15.1	10.4	4.72	3.204			
1,200.0	1,200.0	1,200.0	1,200.0	2.6	2.6	89.87	0.0	15.1	15.1	10.0	5.17	2.925 CC			
1,300.0	1,300.0	1,299.5	1,299.5	2.8	2.8	92.33	-0.7	16.7	16.7	11.1	5.60	2.986			
1,400.0	1,400.0	1,398.7	1,398.6	3.0	3.0	97.49	-2.8	21.4	21.6	15.6	6.02	3.595			
1,500.0	1,500.0	1,497.6	1,497.1	3.2	3.2	-22.30	-6.3	29.2	28.4	22.0	6.41	4.433			
1,600.0	1,599.8	1,596.3	1,595.1	3.4	3.4	-20.95	-11.3	40.0	35.3	28.6	6.78	5.212			
1,700.0	1,699.5	1,694.8	1,692.3	3.6	3.7	-20.75	-17.6	53.9	42.4	35.2	7.16	5.920			
1,800.0	1,798.7	1,794.5	1,790.5	3.8	4.0	-21.49	-24.8	69.8	48.4	40.8	7.56	6.394			
1,900.0	1,897.9	1,894.3	1,888.8	4.1	4.3	-22.37	-32.0	85.6	53.7	45.7	7.99	6.718			
2,000.0	1,997.1	1,994.2	1,987.1	4.3	4.6	-23.09	-39.2	101.5	59.0	50.6	8.43	7.000			
2,100.0	2,096.3	2,094.0	2,085.5	4.6	4.9	-23.69	-46.4	117.4	64.4	55.5	8.89	7.245			
2,200.0	2,195.5	2,193.9	2,183.8	4.9	5.3	-24.20	-53.6	133.3	69.7	60.4	9.35	7.459			
2,300.0	2,294.7	2,293.8	2,282.1	5.1	5.6	-24.64	-60.8	149.1	75.1	65.3	9.82	7.646			
2,400.0	2,393.9	2,393.6	2,380.4	5.4	6.0	-25.02	-68.0	165.0	80.5	70.2	10.30	7.811			
2,500.0	2,493.1	2,493.5	2,478.8	5.7	6.3	-25.35	-75.2	180.9	85.8	75.0	10.79	7.956			
2,600.0	2,592.3	2,593.3	2,577.1	6.0	6.7	-25.64	-82.4	196.7	91.2	79.9	11.28	8.084			
2,700.0	2,691.5	2,693.2	2,675.4	6.3	7.1	-25.90	-89.6	212.6	96.6	84.8	11.78	8.199			
2,800.0	2,790.7	2,793.0	2,773.7	6.6	7.5	-26.13	-96.8	228.5	102.0	89.7	12.28	8.301			
2,900.0	2,889.9	2,892.9	2,872.0	6.9	7.8	-26.34	-104.0	244.3	107.3	94.5	12.79	8.392			
3,000.0	2,989.1	2,992.7	2,970.4	7.2	8.2	-26.53	-111.2	260.2	112.7	99.4	13.30	8.474			
3,100.0	3,088.3	3,092.6	3,068.7	7.5	8.6	-26.70	-118.4	276.1	118.1	104.3	13.81	8.548			
3,200.0	3,187.5	3,192.4	3,167.0	7.8	9.0	-26.86	-125.6	291.9	123.5	109.1	14.33	8.615			
3,300.0	3,286.7	3,292.3	3,265.3	8.1	9.4	-27.00	-132.8	307.8	128.8	114.0	14.85	8.676			
3,400.0	3,385.9	3,392.2	3,363.7	8.4	9.8	-27.13	-140.0	323.7	134.2	118.9	15.37	8.732			
3,500.0	3,485.1	3,492.0	3,462.0	8.8	10.2	-27.25	-147.2	339.6	139.6	123.7	15.90	8.782			
3,600.0	3,584.3	3,591.9	3,560.3	9.1	10.5	-27.37	-154.4	355.4	145.0	128.6	16.42	8.829			
3,700.0	3,683.5	3,691.7	3,658.6	9.4	10.9	-27.47	-161.6	371.3	150.4	133.4	16.95	8.871			
3,800.0	3,782.7	3,791.6	3,756.9	9.7	11.3	-27.57	-168.8	387.2	155.8	138.3	17.48	8.911			
3,900.0	3,881.9	3,891.4	3,855.3	10.0	11.7	-27.66	-176.0	403.0	161.1	143.1	18.01	8.947			
4,000.0	3,981.1	3,991.3	3,953.6	10.3	12.1	-27.74	-183.2	418.9	166.5	148.0	18.54	8.980			
4,100.0	4,080.3	4,091.1	4,051.9	10.7	12.5	-27.82	-190.4	434.8	171.9	152.8	19.08	9.011			
4,200.0	4,179.5	4,191.0	4,150.2	11.0	12.9	-27.90	-197.6	450.6	177.3	157.7	19.61	9.040			
4,300.0	4,278.7	4,294.0	4,251.7	11.3	13.3	-28.02	-204.8	466.6	182.3	162.1	20.15	9.047			
4,400.0	4,377.9	4,400.4	4,357.1	11.6	13.6	-28.49	-210.9	480.0	184.2	163.5	20.67	8.911			
4,500.0	4,477.1	4,506.8	4,462.9	12.0	13.8	-29.38	-215.3	489.8	182.6	161.4	21.21	8.608			
4,600.0	4,576.3	4,612.8	4,568.7	12.3	14.0	-30.67	-218.1	496.0	177.9	156.1	21.77	8.168			
4,700.0	4,675.8	4,718.5	4,674.4	12.5	14.2	-31.98	-219.3	498.6	172.2	149.9	22.27	7.733			
4,800.0	4,775.7	4,819.8	4,775.7	12.7	14.3	-33.03	-219.4	498.7	167.2	144.5	22.71	7.361			
4,900.0	4,875.6	4,919.7	4,875.6	12.9	14.5	-33.50	-219.4	498.7	165.0	141.9	23.08	7.150			
4,949.1	4,924.7	4,968.8	4,924.7	12.9	14.6	-33.56	-219.4	498.7	164.7	141.5	23.26	7.083			
5,000.0	4,975.6	5,019.7	4,975.6	13.0	14.6	89.85	-219.4	498.7	164.9	141.5	23.46	7.031			

CC - Min centre to center distance or convergent point, SF - min separation factor, ES - min ellipse separation

Company:	Verdad Oil & Gas Corporation	Local Co-ordinate Reference:	Well Meehl 01N-65W-24-6N
Project:	SEC.24-T1N-R65W	TVD Reference:	WELL @ 5038.5ft (RKB - 16.5')
Reference Site:	Meehl 01N-65W-24 Pad Sec.24-T01N-R65W	MD Reference:	WELL @ 5038.5ft (RKB - 16.5')
Site Error:	0.0ft	North Reference:	True
Reference Well:	Meehl 01N-65W-24-6N	Survey Calculation Method:	Minimum Curvature
Well Error:	0.0ft	Output errors are at	2.00 sigma
Reference Wellbore	Wellbore #1	Database:	landmark
Reference Design:	Plan #1 (10-17-14)	Offset TVD Reference:	Offset Datum

Offset Design													Offset Site Error:	0.0 ft	
Survey Program: 0-MWD													Offset Well Error:		0.0 ft
Reference		Offset		Semi Major Axis			Distance						Warning		
Measured Depth (ft)	Vertical Depth (ft)	Measured Depth (ft)	Vertical Depth (ft)	Reference (ft)	Offset (ft)	Highside Toolface (°)	Offset Wellbore Centre +N/-S (ft)	+E/-W (ft)	Between Centres (ft)	Between Ellipses (ft)	Minimum Separation (ft)	Separation Factor			
5,100.0	5,075.6	5,119.7	5,075.6	13.2	14.8	89.85	-219.4	498.7	164.9	141.1	23.82	6.923			
5,200.0	5,175.6	5,219.7	5,175.6	13.4	15.0	89.85	-219.4	498.7	164.9	140.7	24.19	6.817			
5,300.0	5,275.6	5,319.7	5,275.6	13.5	15.1	89.85	-219.4	498.7	164.9	140.4	24.57	6.713			
5,400.0	5,375.6	5,419.7	5,375.6	13.7	15.3	89.85	-219.4	498.7	164.9	140.0	24.94	6.612			
5,500.0	5,475.6	5,519.7	5,475.6	13.9	15.4	89.85	-219.4	498.7	164.9	139.6	25.32	6.514			
5,600.0	5,575.6	5,619.7	5,575.6	14.1	15.6	89.85	-219.4	498.7	164.9	139.2	25.70	6.417			
5,700.0	5,675.6	5,719.7	5,675.6	14.2	15.8	89.85	-219.4	498.7	164.9	138.8	26.08	6.323			
5,800.0	5,775.6	5,819.7	5,775.6	14.4	15.9	89.85	-219.4	498.7	164.9	138.5	26.47	6.231			
5,900.0	5,875.6	5,919.7	5,875.6	14.6	16.1	89.85	-219.4	498.7	164.9	138.1	26.85	6.142			
6,000.0	5,975.6	6,019.7	5,975.6	14.8	16.3	89.85	-219.4	498.7	164.9	137.7	27.24	6.054			
6,100.0	6,075.6	6,119.7	6,075.6	15.0	16.4	89.85	-219.4	498.7	164.9	137.3	27.63	5.969			
6,200.0	6,175.6	6,219.7	6,175.6	15.1	16.6	89.85	-219.4	498.7	164.9	136.9	28.02	5.885			
6,300.0	6,275.6	6,319.7	6,275.6	15.3	16.8	89.85	-219.4	498.7	164.9	136.5	28.42	5.804			
6,400.0	6,375.6	6,419.7	6,375.6	15.5	16.9	89.85	-219.4	498.7	164.9	136.1	28.81	5.724			
6,500.0	6,475.6	6,519.7	6,475.6	15.7	17.1	89.85	-219.4	498.7	164.9	135.7	29.21	5.646			
6,600.0	6,575.6	6,619.7	6,575.6	15.9	17.3	89.85	-219.4	498.7	164.9	135.3	29.61	5.570			
6,700.0	6,675.3	6,719.5	6,675.1	16.0	17.4	89.61	-212.8	498.7	164.9	135.0	29.93	5.510			
6,800.0	6,771.9	6,819.3	6,771.5	16.2	17.5	89.63	-187.7	498.9	164.9	134.8	30.12	5.475			
6,900.0	6,861.9	6,919.1	6,861.4	16.2	17.6	89.66	-144.8	499.0	164.9	134.7	30.23	5.456			
7,000.0	6,942.1	7,019.0	6,941.5	16.2	17.6	89.71	-85.4	499.3	164.9	134.6	30.34	5.435			
7,100.0	7,009.4	7,118.8	7,008.8	16.2	17.6	89.76	-11.9	499.6	164.9	134.3	30.59	5.391			
7,200.0	7,061.4	7,218.7	7,060.9	16.2	17.6	89.83	73.2	499.9	164.9	133.8	31.09	5.304			
7,300.0	7,096.2	7,318.6	7,095.9	16.4	17.7	89.90	166.6	500.3	164.9	133.0	31.93	5.165			
7,400.0	7,112.5	7,418.6	7,112.4	16.8	18.0	89.97	265.0	500.7	164.9	131.8	33.12	4.979			
7,500.0	7,113.4	7,518.6	7,113.4	17.6	18.6	90.00	365.0	501.2	164.9	130.3	34.66	4.758			
7,600.0	7,112.9	7,618.6	7,112.9	18.6	19.4	90.00	465.0	501.6	164.9	128.4	36.53	4.515			
7,700.0	7,112.4	7,718.6	7,112.4	19.7	20.4	90.00	565.0	502.0	164.9	126.2	38.69	4.263			
7,800.0	7,112.0	7,818.6	7,112.0	20.9	21.5	90.00	665.0	502.4	164.9	123.8	41.09	4.014			
7,900.0	7,111.5	7,918.6	7,111.5	22.2	22.8	90.00	765.0	502.8	164.9	121.2	43.69	3.775			
8,000.0	7,111.0	8,018.6	7,111.0	23.5	24.1	90.00	865.0	503.3	164.9	118.5	46.47	3.549			
8,100.0	7,110.5	8,118.6	7,110.5	25.0	25.5	90.00	965.0	503.7	164.9	115.5	49.38	3.340			
8,200.0	7,110.1	8,218.6	7,110.1	26.5	27.0	90.00	1,065.0	504.1	164.9	112.5	52.42	3.146			
8,300.0	7,109.6	8,318.6	7,109.6	28.1	28.5	90.00	1,165.0	504.5	164.9	109.4	55.55	2.969			
8,400.0	7,109.1	8,418.6	7,109.1	29.7	30.1	90.00	1,265.0	504.9	164.9	106.2	58.76	2.807			
8,500.0	7,108.7	8,518.6	7,108.7	31.3	31.7	90.00	1,365.0	505.4	164.9	102.9	62.04	2.658			
8,600.0	7,108.2	8,618.6	7,108.2	33.0	33.4	90.00	1,465.0	505.8	164.9	99.5	65.39	2.522			
8,700.0	7,107.7	8,718.6	7,107.7	34.7	35.0	90.00	1,565.0	506.2	164.9	96.1	68.78	2.398			
8,800.0	7,107.2	8,818.6	7,107.2	36.4	36.7	90.00	1,665.0	506.6	164.9	92.7	72.22	2.284			
8,900.0	7,106.8	8,918.6	7,106.8	38.1	38.4	90.00	1,765.0	507.0	164.9	89.2	75.69	2.179			
9,000.0	7,106.3	9,018.6	7,106.3	39.8	40.2	90.00	1,865.0	507.4	164.9	85.7	79.20	2.082			
9,100.0	7,105.8	9,118.6	7,105.8	41.6	41.9	90.00	1,965.0	507.9	164.9	82.2	82.74	1.993			
9,200.0	7,105.4	9,218.6	7,105.4	43.4	43.7	90.00	2,065.0	508.3	164.9	78.6	86.30	1.911			
9,300.0	7,104.9	9,318.6	7,104.9	45.2	45.4	90.00	2,165.0	508.7	164.9	75.0	89.88	1.835			
9,400.0	7,104.4	9,418.6	7,104.4	47.0	47.2	90.00	2,265.0	509.1	164.9	71.4	93.48	1.764			
9,500.0	7,103.9	9,518.6	7,103.9	48.8	49.0	90.00	2,365.0	509.5	164.9	67.8	97.10	1.698			
9,600.0	7,103.5	9,618.6	7,103.5	50.6	50.8	90.00	2,465.0	510.0	164.9	64.2	100.74	1.637			
9,700.0	7,103.0	9,718.6	7,103.0	52.4	52.6	90.00	2,565.0	510.4	164.9	60.5	104.38	1.580			
9,800.0	7,102.5	9,818.6	7,102.5	54.2	54.4	90.00	2,665.0	510.8	164.9	56.9	108.05	1.526			
9,900.0	7,102.1	9,918.6	7,102.1	56.1	56.3	90.00	2,765.0	511.2	164.9	53.2	111.72	1.476 Level 3			
10,000.0	7,101.6	10,018.6	7,101.6	57.9	58.1	90.00	2,865.0	511.6	164.9	49.5	115.40	1.429 Level 3			
10,100.0	7,101.1	10,118.6	7,101.1	59.7	59.9	90.00	2,965.0	512.1	164.9	45.8	119.09	1.385 Level 3			
10,200.0	7,100.6	10,218.6	7,100.6	61.6	61.8	90.00	3,065.0	512.5	164.9	42.1	122.79	1.343 Level 3			

CC - Min centre to center distance or convergent point, SF - min separation factor, ES - min ellipse separation

Company:	Verdad Oil & Gas Corporation	Local Co-ordinate Reference:	Well Meehl 01N-65W-24-6N
Project:	SEC.24-T1N-R65W	TVD Reference:	WELL @ 5038.5ft (RKB - 16.5')
Reference Site:	Meehl 01N-65W-24 Pad Sec.24-T01N-R65W	MD Reference:	WELL @ 5038.5ft (RKB - 16.5')
Site Error:	0.0ft	North Reference:	True
Reference Well:	Meehl 01N-65W-24-6N	Survey Calculation Method:	Minimum Curvature
Well Error:	0.0ft	Output errors are at	2.00 sigma
Reference Wellbore	Wellbore #1	Database:	landmark
Reference Design:	Plan #1 (10-17-14)	Offset TVD Reference:	Offset Datum

Offset Design													Offset Site Error:	0.0 ft	
Survey Program: 0-MWD													Offset Well Error:		0.0 ft
Reference		Offset		Semi Major Axis			Distance						Warning		
Measured Depth (ft)	Vertical Depth (ft)	Measured Depth (ft)	Vertical Depth (ft)	Reference (ft)	Offset (ft)	Highside Toolface (°)	Offset Wellbore Centre +N/-S (ft)	+E/-W (ft)	Between Centres (ft)	Between Ellipses (ft)	Minimum Separation (ft)	Separation Factor			
10,300.0	7,100.2	10,318.6	7,100.2	63.4	63.6	90.00	3,165.0	512.9	164.9	38.4	126.50	1.304	Level 3		
10,400.0	7,099.7	10,418.6	7,099.7	65.3	65.4	90.00	3,264.9	513.3	164.9	34.7	130.21	1.267	Level 3		
10,500.0	7,099.2	10,518.6	7,099.2	67.1	67.3	90.00	3,364.9	513.7	164.9	31.0	133.93	1.231	Level 2		
10,600.0	7,098.8	10,618.6	7,098.8	69.0	69.2	90.00	3,464.9	514.1	164.9	27.3	137.66	1.198	Level 2		
10,700.0	7,098.3	10,718.6	7,098.3	70.9	71.0	90.00	3,564.9	514.6	164.9	23.5	141.39	1.166	Level 2		
10,800.0	7,097.8	10,818.6	7,097.8	72.7	72.9	90.00	3,664.9	515.0	164.9	19.8	145.13	1.136	Level 2		
10,900.0	7,097.3	10,918.6	7,097.3	74.6	74.7	90.00	3,764.9	515.4	164.9	16.0	148.87	1.108	Level 2		
11,000.0	7,096.9	11,018.6	7,096.9	76.5	76.6	90.00	3,864.9	515.8	164.9	12.3	152.62	1.081	Level 2		
11,100.0	7,096.4	11,118.6	7,096.4	78.3	78.5	90.00	3,964.9	516.2	164.9	8.5	156.37	1.055	Level 2		
11,200.0	7,095.9	11,218.6	7,095.9	80.2	80.3	90.00	4,064.9	516.7	164.9	4.8	160.12	1.030	Level 2		
11,300.0	7,095.5	11,318.6	7,095.5	82.1	82.2	90.00	4,164.9	517.1	164.9	1.0	163.88	1.006	Level 2		
11,400.0	7,095.0	11,418.6	7,095.0	84.0	84.1	90.00	4,264.9	517.5	164.9	-2.7	167.64	0.984	Level 1		
11,500.0	7,094.5	11,518.6	7,094.5	85.8	86.0	90.00	4,364.9	517.9	164.9	-6.5	171.40	0.962	Level 1		
11,600.0	7,094.0	11,618.6	7,094.1	87.7	87.8	90.00	4,464.9	518.3	164.9	-10.3	175.17	0.941	Level 1		
11,700.0	7,093.6	11,718.6	7,093.6	89.6	89.7	90.00	4,564.9	518.8	164.9	-14.0	178.94	0.922	Level 1		
11,716.4	7,093.5	11,735.0	7,093.5	89.9	90.0	90.00	4,581.3	518.8	164.9	-14.6	179.55	0.918	Level 1		
11,717.3	7,093.5	11,735.4	7,093.5	89.9	90.0	90.00	4,581.7	518.8	164.9	-14.7	179.58	0.918	Level 1, ES, SF		

Company:	Verdad Oil & Gas Corporation	Local Co-ordinate Reference:	Well Meehl 01N-65W-24-6N
Project:	SEC.24-T1N-R65W	TVD Reference:	WELL @ 5038.5ft (RKB - 16.5')
Reference Site:	Meehl 01N-65W-24 Pad Sec.24-T01N-R65W	MD Reference:	WELL @ 5038.5ft (RKB - 16.5')
Site Error:	0.0ft	North Reference:	True
Reference Well:	Meehl 01N-65W-24-6N	Survey Calculation Method:	Minimum Curvature
Well Error:	0.0ft	Output errors are at	2.00 sigma
Reference Wellbore	Wellbore #1	Database:	landmark
Reference Design:	Plan #1 (10-17-14)	Offset TVD Reference:	Offset Datum

Offset Design													Offset Site Error:	0.0 ft	
Survey Program: 0-MWD													Offset Well Error:		0.0 ft
Reference				Offset			Semi Major Axis			Distance				Warning	
Measured Depth (ft)	Vertical Depth (ft)	Measured Depth (ft)	Vertical Depth (ft)	Reference (ft)	Offset (ft)	Highside Toolface (°)	Offset Wellbore Centre +N/-S (ft)	+E/-W (ft)	Between Centres (ft)	Between Ellipses (ft)	Minimum Separation (ft)	Separation Factor			
0.0	0.0	0.0	0.0	0.0	0.0	89.95	0.0	30.0	30.0						
100.0	100.0	100.0	100.0	0.1	0.1	89.95	0.0	30.0	30.0	29.7	0.22	133.313			
200.0	200.0	200.0	200.0	0.3	0.3	89.95	0.0	30.0	30.0	29.3	0.67	44.438			
300.0	300.0	300.0	300.0	0.6	0.6	89.95	0.0	30.0	30.0	28.8	1.12	26.663			
400.0	400.0	400.0	400.0	0.8	0.8	89.95	0.0	30.0	30.0	28.4	1.57	19.045			
500.0	500.0	500.0	500.0	1.0	1.0	89.95	0.0	30.0	30.0	27.9	2.02	14.813			
600.0	600.0	600.0	600.0	1.2	1.2	89.95	0.0	30.0	30.0	27.5	2.47	12.119	CC, ES		
700.0	700.0	699.0	699.0	1.5	1.4	90.97	-0.5	31.6	31.6	28.7	2.90	10.886			
800.0	800.0	797.7	797.6	1.7	1.6	93.46	-2.2	36.4	36.6	33.2	3.33	10.988			
900.0	900.0	896.0	895.5	1.9	1.9	96.38	-5.0	44.4	44.9	41.1	3.77	11.928			
1,000.0	1,000.0	993.6	992.4	2.1	2.1	99.01	-8.8	55.5	56.7	52.5	4.22	13.430			
1,100.0	1,100.0	1,090.3	1,087.9	2.4	2.4	101.11	-13.6	69.5	71.9	67.2	4.70	15.290			
1,200.0	1,200.0	1,185.8	1,181.7	2.6	2.7	102.71	-19.5	86.4	90.4	85.2	5.21	17.351			
1,300.0	1,300.0	1,282.7	1,276.4	2.8	3.1	103.90	-26.2	105.7	111.4	105.7	5.75	19.360			
1,400.0	1,400.0	1,380.4	1,371.9	3.0	3.5	104.73	-32.9	125.3	132.6	126.3	6.32	20.984			
1,500.0	1,500.0	1,478.5	1,467.7	3.2	3.9	-18.12	-39.7	145.0	152.2	145.7	6.44	23.640			
1,600.0	1,599.8	1,577.1	1,564.1	3.4	4.3	-18.08	-46.6	164.8	168.5	161.6	6.86	24.573			
1,700.0	1,699.5	1,676.2	1,661.0	3.6	4.7	-18.40	-53.5	184.7	181.5	174.2	7.29	24.913			
1,800.0	1,798.7	1,775.7	1,758.2	3.8	5.2	-19.02	-60.4	204.7	191.5	183.7	7.73	24.768			
1,900.0	1,897.9	1,875.3	1,855.5	4.1	5.6	-19.69	-67.3	224.7	200.8	192.6	8.20	24.502			
2,000.0	1,997.1	1,974.8	1,952.7	4.3	6.1	-20.29	-74.2	244.7	210.2	201.5	8.67	24.241			
2,100.0	2,096.3	2,074.3	2,050.0	4.6	6.5	-20.84	-81.1	264.6	219.6	210.4	9.15	23.988			
2,200.0	2,195.5	2,173.9	2,147.3	4.9	7.0	-21.35	-88.0	284.6	229.0	219.4	9.65	23.744			
2,300.0	2,294.7	2,273.4	2,244.5	5.1	7.4	-21.82	-94.9	304.6	238.4	228.3	10.14	23.510			
2,400.0	2,393.9	2,372.9	2,341.8	5.4	7.9	-22.25	-101.8	324.6	247.9	237.2	10.65	23.287			
2,500.0	2,493.1	2,472.5	2,439.1	5.7	8.4	-22.65	-108.7	344.6	257.4	246.2	11.15	23.074			
2,600.0	2,592.3	2,572.0	2,536.3	6.0	8.8	-23.02	-115.7	364.6	266.8	255.2	11.67	22.871			
2,700.0	2,691.5	2,671.5	2,633.6	6.3	9.3	-23.37	-122.6	384.5	276.3	264.1	12.18	22.679			
2,800.0	2,790.7	2,771.1	2,730.9	6.6	9.8	-23.69	-129.5	404.5	285.8	273.1	12.70	22.496			
2,900.0	2,889.9	2,870.6	2,828.1	6.9	10.2	-24.00	-136.4	424.5	295.3	282.1	13.23	22.322			
3,000.0	2,989.1	2,970.2	2,925.4	7.2	10.7	-24.28	-143.3	444.5	304.8	291.1	13.76	22.157			
3,100.0	3,088.3	3,069.7	3,022.7	7.5	11.1	-24.55	-150.2	464.5	314.3	300.0	14.29	22.000			
3,200.0	3,187.5	3,169.2	3,119.9	7.8	11.6	-24.80	-157.1	484.4	323.8	309.0	14.82	21.851			
3,300.0	3,286.7	3,268.8	3,217.2	8.1	12.1	-25.03	-164.0	504.4	333.4	318.0	15.36	21.709			
3,400.0	3,385.9	3,368.3	3,314.4	8.4	12.5	-25.26	-170.9	524.4	342.9	327.0	15.89	21.574			
3,500.0	3,485.1	3,467.8	3,411.7	8.8	13.0	-25.47	-177.8	544.4	352.4	336.0	16.43	21.445			
3,600.0	3,584.3	3,567.4	3,509.0	9.1	13.5	-25.67	-184.7	564.4	362.0	345.0	16.98	21.323			
3,700.0	3,683.5	3,666.9	3,606.2	9.4	13.9	-25.86	-191.7	584.4	371.5	354.0	17.52	21.206			
3,800.0	3,782.7	3,768.3	3,705.3	9.7	14.4	-26.04	-198.7	604.7	381.0	363.0	18.07	21.091			
3,900.0	3,881.9	3,883.1	3,818.1	10.0	14.8	-26.33	-205.7	625.1	388.2	369.6	18.60	20.866			
4,000.0	3,981.1	3,998.3	3,932.0	10.3	15.1	-26.75	-211.3	641.2	391.4	372.3	19.13	20.458			
4,100.0	4,080.3	4,113.6	4,046.6	10.7	15.4	-27.32	-215.4	653.1	390.7	371.0	19.66	19.875			
4,200.0	4,179.5	4,228.6	4,161.3	11.0	15.6	-28.05	-218.0	660.5	386.1	365.9	20.18	19.130			
4,300.0	4,278.7	4,342.9	4,275.6	11.3	15.7	-28.97	-219.0	663.6	377.8	357.0	20.72	18.232			
4,400.0	4,377.9	4,445.2	4,377.9	11.6	15.9	-29.95	-219.1	663.7	366.8	345.6	21.24	17.267			
4,500.0	4,477.1	4,544.4	4,477.1	12.0	16.0	-30.96	-219.1	663.7	355.9	334.1	21.77	16.347			
4,600.0	4,576.3	4,643.6	4,576.3	12.3	16.1	-31.98	-219.1	663.7	345.3	323.0	22.29	15.492			
4,700.0	4,675.8	4,743.2	4,675.8	12.5	16.2	-32.75	-219.1	663.7	337.2	314.5	22.72	14.842			
4,800.0	4,775.7	4,843.0	4,775.7	12.7	16.4	-33.26	-219.1	663.7	332.1	309.0	23.10	14.375			
4,900.0	4,875.6	4,942.9	4,875.6	12.9	16.5	-33.48	-219.1	663.7	330.0	306.5	23.43	14.080			
4,949.1	4,924.7	4,992.0	4,924.7	12.9	16.6	-33.51	-219.1	663.7	329.7	306.1	23.61	13.966			
5,000.0	4,975.6	5,042.9	4,975.6	13.0	16.6	89.87	-219.1	663.7	329.9	306.1	23.81	13.857			

CC - Min centre to center distance or convergent point, SF - min separation factor, ES - min ellipse separation

Company:	Verdad Oil & Gas Corporation	Local Co-ordinate Reference:	Well Meehl 01N-65W-24-6N
Project:	SEC.24-T1N-R65W	TVD Reference:	WELL @ 5038.5ft (RKB - 16.5')
Reference Site:	Meehl 01N-65W-24 Pad Sec.24-T01N-R65W	MD Reference:	WELL @ 5038.5ft (RKB - 16.5')
Site Error:	0.0ft	North Reference:	True
Reference Well:	Meehl 01N-65W-24-6N	Survey Calculation Method:	Minimum Curvature
Well Error:	0.0ft	Output errors are at	2.00 sigma
Reference Wellbore	Wellbore #1	Database:	landmark
Reference Design:	Plan #1 (10-17-14)	Offset TVD Reference:	Offset Datum

Offset Design													Offset Site Error:	0.0ft	
Survey Program: 0-MWD													Offset Well Error:		0.0ft
Reference		Offset		Semi Major Axis			Distance						Warning		
Measured Depth (ft)	Vertical Depth (ft)	Measured Depth (ft)	Vertical Depth (ft)	Reference (ft)	Offset (ft)	Highside Toolface (°)	Offset Wellbore Centre +N/-S (ft)	+E/-W (ft)	Between Centres (ft)	Between Ellipses (ft)	Minimum Separation (ft)	Separation Factor			
5,100.0	5,075.6	5,142.9	5,075.6	13.2	16.8	89.87	-219.1	663.7	329.9	305.7	24.17	13.649			
5,200.0	5,175.6	5,242.9	5,175.6	13.4	16.9	89.87	-219.1	663.7	329.9	305.3	24.53	13.446			
5,300.0	5,275.6	5,342.9	5,275.6	13.5	17.1	89.87	-219.1	663.7	329.9	305.0	24.90	13.248			
5,400.0	5,375.6	5,442.9	5,375.6	13.7	17.2	89.87	-219.1	663.7	329.9	304.6	25.27	13.054			
5,500.0	5,475.6	5,542.9	5,475.6	13.9	17.3	89.87	-219.1	663.7	329.9	304.2	25.64	12.864			
5,600.0	5,575.6	5,642.9	5,575.6	14.1	17.5	89.87	-219.1	663.7	329.9	303.8	26.02	12.679			
5,700.0	5,675.6	5,742.9	5,675.6	14.2	17.6	89.87	-219.1	663.7	329.9	303.5	26.39	12.497			
5,800.0	5,775.6	5,842.9	5,775.6	14.4	17.8	89.87	-219.1	663.7	329.9	303.1	26.77	12.320			
5,900.0	5,875.6	5,942.9	5,875.6	14.6	17.9	89.87	-219.1	663.7	329.9	302.7	27.16	12.147			
6,000.0	5,975.6	6,042.9	5,975.6	14.8	18.1	89.87	-219.1	663.7	329.9	302.3	27.54	11.978			
6,100.0	6,075.6	6,142.9	6,075.6	15.0	18.2	89.87	-219.1	663.7	329.9	301.9	27.93	11.812			
6,200.0	6,175.6	6,242.9	6,175.6	15.1	18.4	89.87	-219.1	663.7	329.9	301.6	28.31	11.650			
6,300.0	6,275.6	6,342.9	6,275.6	15.3	18.6	89.87	-219.1	663.7	329.9	301.2	28.70	11.492			
6,400.0	6,375.6	6,442.9	6,375.6	15.5	18.7	89.87	-219.1	663.7	329.9	300.8	29.09	11.338			
6,500.0	6,475.6	6,542.9	6,475.6	15.7	18.9	89.87	-219.1	663.7	329.9	300.4	29.49	11.187			
6,600.0	6,575.6	6,642.9	6,575.6	15.9	19.0	89.87	-219.1	663.7	329.9	300.0	29.88	11.039			
6,700.0	6,675.3	6,742.6	6,674.9	16.0	19.2	89.64	-212.6	663.7	329.9	299.7	30.20	10.923			
6,800.0	6,771.9	6,842.2	6,771.2	16.2	19.3	89.66	-187.6	663.8	329.9	299.5	30.39	10.855			
6,900.0	6,861.9	6,941.9	6,861.0	16.2	19.3	89.69	-144.7	664.0	329.9	299.4	30.49	10.819			
7,000.0	6,942.1	7,041.5	6,941.0	16.2	19.3	89.73	-85.6	664.2	329.9	299.3	30.60	10.779			
7,100.0	7,009.4	7,141.2	7,008.4	16.2	19.3	89.78	-12.2	664.5	329.9	299.0	30.85	10.694			
7,200.0	7,061.4	7,241.0	7,060.5	16.2	19.3	89.84	72.6	664.9	329.9	298.5	31.34	10.525			
7,300.0	7,096.2	7,340.9	7,095.6	16.4	19.4	89.90	166.0	665.3	329.9	297.7	32.17	10.255			
7,400.0	7,112.5	7,440.8	7,112.3	16.8	19.6	89.97	264.3	665.7	329.9	296.5	33.35	9.891			
7,500.0	7,113.4	7,540.8	7,113.4	17.6	20.1	90.00	364.3	666.1	329.9	295.0	34.89	9.455			
7,600.0	7,112.9	7,640.8	7,112.9	18.6	20.7	90.00	464.3	666.6	329.9	293.2	36.74	8.979			
7,700.0	7,112.4	7,740.8	7,112.4	19.7	21.6	90.00	564.3	667.0	329.9	291.0	38.88	8.484			
7,800.0	7,112.0	7,840.8	7,112.0	20.9	22.6	90.00	664.3	667.4	329.9	288.6	41.27	7.994			
7,900.0	7,111.5	7,940.8	7,111.5	22.2	23.7	90.00	764.3	667.8	329.9	286.0	43.86	7.522			
8,000.0	7,111.0	8,040.8	7,111.0	23.5	25.0	90.00	864.3	668.3	329.9	283.3	46.62	7.076			
8,100.0	7,110.5	8,140.8	7,110.5	25.0	26.4	90.00	964.3	668.7	329.9	280.4	49.53	6.661			
8,200.0	7,110.1	8,240.8	7,110.1	26.5	27.8	90.00	1,064.3	669.1	329.9	277.4	52.55	6.278			
8,300.0	7,109.6	8,340.8	7,109.6	28.1	29.3	90.00	1,164.3	669.5	329.9	274.3	55.67	5.926			
8,400.0	7,109.1	8,440.8	7,109.1	29.7	30.8	90.00	1,264.3	670.0	329.9	271.1	58.88	5.604			
8,500.0	7,108.7	8,540.8	7,108.7	31.3	32.4	90.00	1,364.3	670.4	329.9	267.8	62.15	5.308			
8,600.0	7,108.2	8,640.8	7,108.2	33.0	34.0	90.00	1,464.3	670.8	329.9	264.5	65.49	5.038			
8,700.0	7,107.7	8,740.8	7,107.7	34.7	35.6	90.00	1,564.3	671.2	330.0	261.1	68.88	4.790			
8,800.0	7,107.2	8,840.8	7,107.2	36.4	37.3	90.00	1,664.3	671.6	330.0	257.6	72.31	4.563			
8,900.0	7,106.8	8,940.8	7,106.8	38.1	39.0	90.00	1,764.3	672.1	330.0	254.2	75.78	4.354			
9,000.0	7,106.3	9,040.8	7,106.3	39.8	40.7	90.00	1,864.3	672.5	330.0	250.7	79.28	4.162			
9,100.0	7,105.8	9,140.8	7,105.8	41.6	42.4	90.00	1,964.3	672.9	330.0	247.2	82.81	3.985			
9,200.0	7,105.4	9,240.8	7,105.4	43.4	44.1	90.00	2,064.3	673.3	330.0	243.6	86.37	3.821			
9,300.0	7,104.9	9,340.8	7,104.9	45.2	45.9	90.00	2,164.3	673.8	330.0	240.0	89.95	3.669			
9,400.0	7,104.4	9,440.8	7,104.4	47.0	47.6	90.00	2,264.3	674.2	330.0	236.4	93.55	3.528			
9,500.0	7,103.9	9,540.8	7,103.9	48.8	49.4	90.00	2,364.3	674.6	330.0	232.8	97.16	3.396			
9,600.0	7,103.5	9,640.8	7,103.5	50.6	51.2	90.00	2,464.3	675.0	330.0	229.2	100.79	3.274			
9,700.0	7,103.0	9,740.8	7,103.0	52.4	53.0	90.00	2,564.3	675.5	330.0	225.6	104.44	3.160			
9,800.0	7,102.5	9,840.8	7,102.5	54.2	54.8	90.00	2,664.3	675.9	330.0	221.9	108.10	3.053			
9,900.0	7,102.1	9,940.8	7,102.1	56.1	56.6	90.00	2,764.3	676.3	330.0	218.2	111.77	2.953			
10,000.0	7,101.6	10,040.8	7,101.6	57.9	58.4	90.00	2,864.2	676.7	330.0	214.6	115.45	2.859			
10,100.0	7,101.1	10,140.8	7,101.1	59.7	60.3	90.00	2,964.2	677.2	330.0	210.9	119.14	2.770			
10,200.0	7,100.6	10,240.8	7,100.6	61.6	62.1	90.00	3,064.2	677.6	330.0	207.2	122.84	2.687			

CC - Min centre to center distance or convergent point, SF - min separation factor, ES - min ellipse separation

Company:	Verdad Oil & Gas Corporation	Local Co-ordinate Reference:	Well Meehl 01N-65W-24-6N
Project:	SEC.24-T1N-R65W	TVD Reference:	WELL @ 5038.5ft (RKB - 16.5')
Reference Site:	Meehl 01N-65W-24 Pad Sec.24-T01N-R65W	MD Reference:	WELL @ 5038.5ft (RKB - 16.5')
Site Error:	0.0ft	North Reference:	True
Reference Well:	Meehl 01N-65W-24-6N	Survey Calculation Method:	Minimum Curvature
Well Error:	0.0ft	Output errors are at	2.00 sigma
Reference Wellbore	Wellbore #1	Database:	landmark
Reference Design:	Plan #1 (10-17-14)	Offset TVD Reference:	Offset Datum

Offset Design													Offset Site Error:	0.0 ft	
Survey Program: 0-MWD													Offset Well Error:		0.0 ft
Reference		Offset		Semi Major Axis			Distance						Warning		
Measured Depth (ft)	Vertical Depth (ft)	Measured Depth (ft)	Vertical Depth (ft)	Reference (ft)	Offset (ft)	Highside Toolface (°)	Offset Wellbore Centre +N/-S (ft)	+E/-W (ft)	Between Centres (ft)	Between Ellipses (ft)	Minimum Separation (ft)	Separation Factor			
10,300.0	7,100.2	10,340.8	7,100.2	63.4	63.9	90.00	3,164.2	678.0	330.0	203.5	126.54	2.608			
10,400.0	7,099.7	10,440.8	7,099.7	65.3	65.8	90.00	3,264.2	678.4	330.0	199.8	130.25	2.534			
10,500.0	7,099.2	10,540.8	7,099.2	67.1	67.6	90.00	3,364.2	678.9	330.0	196.1	133.97	2.464			
10,600.0	7,098.8	10,640.8	7,098.8	69.0	69.4	90.00	3,464.2	679.3	330.1	192.4	137.70	2.397			
10,700.0	7,098.3	10,740.8	7,098.3	70.9	71.3	90.00	3,564.2	679.7	330.1	188.6	141.43	2.334			
10,800.0	7,097.8	10,840.8	7,097.8	72.7	73.1	90.00	3,664.2	680.1	330.1	184.9	145.16	2.274			
10,900.0	7,097.3	10,940.8	7,097.3	74.6	75.0	90.00	3,764.2	680.6	330.1	181.2	148.90	2.217			
11,000.0	7,096.9	11,040.8	7,096.9	76.5	76.9	90.00	3,864.2	681.0	330.1	177.4	152.65	2.162			
11,100.0	7,096.4	11,140.8	7,096.4	78.3	78.7	90.00	3,964.2	681.4	330.1	173.7	156.40	2.111			
11,200.0	7,095.9	11,240.8	7,095.9	80.2	80.6	90.00	4,064.2	681.8	330.1	169.9	160.15	2.061			
11,300.0	7,095.5	11,340.8	7,095.5	82.1	82.4	90.00	4,164.2	682.2	330.1	166.2	163.91	2.014			
11,400.0	7,095.0	11,440.8	7,095.0	84.0	84.3	90.00	4,264.2	682.7	330.1	162.4	167.67	1.969			
11,500.0	7,094.5	11,540.8	7,094.5	85.8	86.2	90.00	4,364.2	683.1	330.1	158.7	171.43	1.926			
11,600.0	7,094.0	11,640.8	7,094.1	87.7	88.1	90.00	4,464.2	683.5	330.1	154.9	175.19	1.884			
11,700.0	7,093.6	11,740.8	7,093.6	89.6	89.9	90.00	4,564.2	683.9	330.1	151.2	178.96	1.845			
11,705.5	7,093.6	11,746.3	7,093.6	89.7	90.0	90.00	4,569.7	684.0	330.1	150.9	179.17	1.842			
11,717.3	7,093.5	11,757.6	7,093.5	89.9	90.2	90.00	4,581.0	684.0	330.1	150.5	179.60	1.838 SF			

Company:	Verdad Oil & Gas Corporation	Local Co-ordinate Reference:	Well Meehl 01N-65W-24-6N
Project:	SEC.24-T1N-R65W	TVD Reference:	WELL @ 5038.5ft (RKB - 16.5')
Reference Site:	Meehl 01N-65W-24 Pad Sec.24-T01N-R65W	MD Reference:	WELL @ 5038.5ft (RKB - 16.5')
Site Error:	0.0ft	North Reference:	True
Reference Well:	Meehl 01N-65W-24-6N	Survey Calculation Method:	Minimum Curvature
Well Error:	0.0ft	Output errors are at	2.00 sigma
Reference Wellbore	Wellbore #1	Database:	landmark
Reference Design:	Plan #1 (10-17-14)	Offset TVD Reference:	Offset Datum

Offset Design													Offset Site Error:	0.0 ft	
Survey Program: 0-MWD													Offset Well Error:		0.0 ft
Reference				Offset			Semi Major Axis			Distance				Warning	
Measured Depth (ft)	Vertical Depth (ft)	Measured Depth (ft)	Vertical Depth (ft)	Reference (ft)	Offset (ft)	Highside Toolface (°)	Offset Wellbore Centre +N/-S (ft)	+E/-W (ft)	Between Centres (ft)	Between Ellipses (ft)	Minimum Separation (ft)	Separation Factor			
0.0	0.0	0.0	0.0	0.0	0.0	89.98	0.0	45.1	45.1						
100.0	100.0	100.0	100.0	0.1	0.1	89.98	0.0	45.1	45.1	44.9	0.22	200.593			
200.0	200.0	200.0	200.0	0.3	0.3	89.98	0.0	45.1	45.1	44.4	0.67	66.864	CC, ES		
300.0	300.0	298.5	298.4	0.6	0.5	90.54	-0.4	46.7	46.7	45.6	1.11	42.192			
400.0	400.0	396.7	396.5	0.8	0.8	92.00	-1.8	51.6	51.7	50.2	1.55	33.427			
500.0	500.0	494.5	494.0	1.0	1.0	93.89	-4.1	59.7	60.1	58.1	2.01	29.960			
600.0	600.0	591.6	590.4	1.2	1.3	95.79	-7.2	70.8	71.8	69.3	2.49	28.906			
700.0	700.0	687.8	685.4	1.5	1.6	97.47	-11.1	85.0	86.9	83.9	2.99	29.056			
800.0	800.0	782.9	778.9	1.7	2.0	98.86	-15.9	102.0	105.4	101.8	3.53	29.832			
900.0	900.0	876.7	870.4	1.9	2.4	99.97	-21.4	121.7	127.1	123.0	4.11	30.926			
1,000.0	1,000.0	970.2	961.0	2.1	2.8	100.87	-27.7	144.1	151.8	147.1	4.72	32.150			
1,100.0	1,100.0	1,066.8	1,054.3	2.4	3.3	101.56	-34.4	168.1	177.6	172.2	5.37	33.046			
1,200.0	1,200.0	1,163.4	1,147.7	2.6	3.8	102.07	-41.1	192.1	203.3	197.3	6.03	33.697			
1,300.0	1,300.0	1,260.1	1,241.0	2.8	4.4	102.47	-47.8	216.1	229.0	222.3	6.70	34.180			
1,400.0	1,400.0	1,356.7	1,334.4	3.0	4.9	102.79	-54.5	240.1	254.8	247.4	7.37	34.550			
1,500.0	1,500.0	1,453.7	1,428.1	3.2	5.4	-20.27	-61.2	264.2	278.9	272.2	6.72	41.536			
1,600.0	1,599.8	1,551.5	1,522.6	3.4	6.0	-20.25	-68.0	288.4	299.9	292.8	7.17	41.830			
1,700.0	1,699.5	1,649.9	1,617.7	3.6	6.5	-20.45	-74.8	312.9	317.7	310.1	7.63	41.614			
1,800.0	1,798.7	1,748.7	1,713.2	3.8	7.0	-20.88	-81.7	337.4	332.5	324.4	8.11	40.989			
1,900.0	1,897.9	1,847.7	1,808.8	4.1	7.6	-21.38	-88.6	362.0	346.7	338.1	8.60	40.295			
2,000.0	1,997.1	1,946.6	1,904.4	4.3	8.1	-21.84	-95.4	386.6	360.8	351.7	9.10	39.643			
2,100.0	2,096.3	2,045.6	2,000.0	4.6	8.7	-22.26	-102.3	411.1	375.1	365.5	9.61	39.032			
2,200.0	2,195.5	2,144.5	2,095.6	4.9	9.2	-22.66	-109.2	435.7	389.3	379.2	10.12	38.460			
2,300.0	2,294.7	2,243.5	2,191.2	5.1	9.8	-23.02	-116.0	460.3	403.5	392.9	10.64	37.923			
2,400.0	2,393.9	2,342.4	2,286.8	5.4	10.3	-23.36	-122.9	484.8	417.8	406.6	11.16	37.421			
2,500.0	2,493.1	2,441.4	2,382.4	5.7	10.9	-23.68	-129.8	509.4	432.1	420.4	11.69	36.950			
2,600.0	2,592.3	2,540.3	2,478.0	6.0	11.4	-23.98	-136.6	534.0	446.4	434.1	12.23	36.509			
2,700.0	2,691.5	2,639.2	2,573.6	6.3	12.0	-24.26	-143.5	558.5	460.7	447.9	12.76	36.094			
2,800.0	2,790.7	2,738.2	2,669.2	6.6	12.5	-24.52	-150.4	583.1	475.0	461.7	13.30	35.705			
2,900.0	2,889.9	2,837.1	2,764.8	6.9	13.1	-24.77	-157.2	607.7	489.3	475.5	13.85	35.339			
3,000.0	2,989.1	2,936.1	2,860.4	7.2	13.6	-25.00	-164.1	632.3	503.6	489.2	14.39	34.994			
3,100.0	3,088.3	3,035.0	2,956.0	7.5	14.2	-25.22	-171.0	656.8	518.0	503.0	14.94	34.669			
3,200.0	3,187.5	3,134.0	3,051.6	7.8	14.7	-25.43	-177.8	681.4	532.3	516.8	15.49	34.362			
3,300.0	3,286.7	3,232.9	3,147.2	8.1	15.3	-25.63	-184.7	706.0	546.7	530.6	16.04	34.072			
3,400.0	3,385.9	3,331.9	3,242.8	8.4	15.8	-25.81	-191.6	730.5	561.0	544.4	16.60	33.798			
3,500.0	3,485.1	3,450.5	3,357.9	8.8	16.3	-26.05	-199.4	754.4	574.0	556.8	17.17	33.429			
3,600.0	3,584.3	3,575.0	3,479.7	9.1	16.8	-26.37	-206.2	782.7	582.8	565.1	17.73	32.881			
3,700.0	3,683.5	3,700.0	3,603.2	9.4	17.2	-26.76	-211.6	802.0	587.4	569.1	18.27	32.147			
3,800.0	3,782.7	3,825.3	3,727.6	9.7	17.4	-27.23	-215.5	816.1	587.7	568.8	18.81	31.249			
3,900.0	3,881.9	3,950.3	3,852.2	10.0	17.7	-27.79	-218.0	824.9	583.6	564.3	19.33	30.196			
4,000.0	3,981.1	4,074.6	3,976.4	10.3	17.8	-28.46	-219.0	828.5	575.4	555.6	19.85	28.988			
4,100.0	4,080.3	4,178.4	4,080.3	10.7	17.9	-29.10	-219.0	828.6	564.4	544.1	20.33	27.757			
4,200.0	4,179.5	4,277.6	4,179.5	11.0	18.0	-29.73	-219.0	828.6	553.4	532.5	20.81	26.588			
4,300.0	4,278.7	4,376.8	4,278.7	11.3	18.1	-30.40	-219.0	828.6	542.4	521.1	21.30	25.465			
4,400.0	4,377.9	4,476.0	4,377.9	11.6	18.2	-31.08	-219.0	828.6	531.5	509.7	21.80	24.386			
4,500.0	4,477.1	4,575.2	4,477.1	12.0	18.3	-31.80	-219.0	828.6	520.7	498.4	22.30	23.351			
4,600.0	4,576.3	4,674.5	4,576.3	12.3	18.5	-32.49	-219.0	828.6	510.2	487.4	22.78	22.393			
4,700.0	4,675.8	4,774.0	4,675.8	12.5	18.6	-32.99	-219.0	828.6	502.1	479.0	23.17	21.667			
4,800.0	4,775.7	4,873.8	4,775.7	12.7	18.7	-33.31	-219.0	828.6	497.0	473.5	23.52	21.130			
4,900.0	4,875.6	4,973.8	4,875.6	12.9	18.8	-33.45	-219.0	828.6	494.9	471.0	23.83	20.769			
4,949.1	4,924.7	5,022.8	4,924.7	12.9	18.9	-33.47	-219.0	828.6	494.6	470.6	23.99	20.613			
5,000.0	4,975.6	5,073.8	4,975.6	13.0	18.9	89.91	-219.0	828.6	494.8	470.6	24.19	20.451			

CC - Min centre to center distance or convergent point, SF - min separation factor, ES - min ellipse separation

Company:	Verdad Oil & Gas Corporation	Local Co-ordinate Reference:	Well Meehl 01N-65W-24-6N
Project:	SEC.24-T1N-R65W	TVD Reference:	WELL @ 5038.5ft (RKB - 16.5')
Reference Site:	Meehl 01N-65W-24 Pad Sec.24-T01N-R65W	MD Reference:	WELL @ 5038.5ft (RKB - 16.5')
Site Error:	0.0ft	North Reference:	True
Reference Well:	Meehl 01N-65W-24-6N	Survey Calculation Method:	Minimum Curvature
Well Error:	0.0ft	Output errors are at	2.00 sigma
Reference Wellbore	Wellbore #1	Database:	landmark
Reference Design:	Plan #1 (10-17-14)	Offset TVD Reference:	Offset Datum

Offset Design													Offset Site Error:	0.0 ft	
Survey Program: 0-MWD													Offset Well Error:		0.0 ft
Reference		Offset		Semi Major Axis			Distance						Warning		
Measured Depth (ft)	Vertical Depth (ft)	Measured Depth (ft)	Vertical Depth (ft)	Reference (ft)	Offset (ft)	Highside Toolface (°)	Offset Wellbore Centre +N/-S (ft)	+E/-W (ft)	Between Centres (ft)	Between Ellipses (ft)	Minimum Separation (ft)	Separation Factor			
5,100.0	5,075.6	5,173.8	5,075.6	13.2	19.0	89.91	-219.0	828.6	494.8	470.2	24.55	20.155			
5,200.0	5,175.6	5,273.8	5,175.6	13.4	19.2	89.91	-219.0	828.6	494.8	469.9	24.91	19.864			
5,300.0	5,275.6	5,373.8	5,275.6	13.5	19.3	89.91	-219.0	828.6	494.8	469.5	25.27	19.580			
5,400.0	5,375.6	5,473.8	5,375.6	13.7	19.4	89.91	-219.0	828.6	494.8	469.2	25.64	19.301			
5,500.0	5,475.6	5,573.8	5,475.6	13.9	19.6	89.91	-219.0	828.6	494.8	468.8	26.00	19.028			
5,600.0	5,575.6	5,673.8	5,575.6	14.1	19.7	89.91	-219.0	828.6	494.8	468.4	26.37	18.761			
5,700.0	5,675.6	5,773.8	5,675.6	14.2	19.8	89.91	-219.0	828.6	494.8	468.0	26.74	18.500			
5,800.0	5,775.6	5,873.8	5,775.6	14.4	19.9	89.91	-219.0	828.6	494.8	467.7	27.12	18.245			
5,900.0	5,875.6	5,973.8	5,875.6	14.6	20.1	89.91	-219.0	828.6	494.8	467.3	27.50	17.995			
6,000.0	5,975.6	6,073.8	5,975.6	14.8	20.2	89.91	-219.0	828.6	494.8	466.9	27.88	17.750			
6,100.0	6,075.6	6,173.8	6,075.6	15.0	20.4	89.91	-219.0	828.6	494.8	466.5	28.26	17.511			
6,200.0	6,175.6	6,273.8	6,175.6	15.1	20.5	89.91	-219.0	828.6	494.8	466.1	28.64	17.276			
6,300.0	6,275.6	6,373.8	6,275.6	15.3	20.6	89.91	-219.0	828.6	494.8	465.8	29.02	17.047			
6,400.0	6,375.6	6,473.8	6,375.6	15.5	20.8	89.91	-219.0	828.6	494.8	465.4	29.41	16.823			
6,500.0	6,475.6	6,573.8	6,475.6	15.7	20.9	89.91	-219.0	828.6	494.8	465.0	29.80	16.604			
6,600.0	6,575.6	6,673.8	6,575.6	15.9	21.1	89.91	-219.0	828.6	494.8	464.6	30.19	16.389			
6,660.3	6,635.8	6,733.9	6,635.8	16.0	21.2	90.00	-219.0	828.6	494.8	464.4	30.35	16.300			
6,700.0	6,675.3	6,773.4	6,675.3	16.0	21.2	90.42	-219.0	828.6	494.8	464.3	30.46	16.245			
6,800.0	6,771.9	6,870.0	6,771.9	16.2	21.4	93.14	-219.0	828.6	495.6	465.1	30.49	16.257			
6,900.0	6,861.9	6,960.1	6,861.9	16.2	21.5	97.10	-219.0	828.6	500.0	469.6	30.36	16.467			
7,000.0	6,942.1	7,059.4	6,961.0	16.2	21.6	102.20	-214.5	828.6	511.2	481.1	30.12	16.974			
7,100.0	7,009.4	7,198.1	7,092.2	16.2	21.7	108.03	-171.6	828.8	525.9	496.3	29.68	17.721			
7,200.0	7,061.4	7,378.2	7,228.8	16.2	21.7	112.65	-56.4	829.3	537.8	508.5	29.27	18.372			
7,300.0	7,096.2	7,586.0	7,309.1	16.4	21.8	113.40	132.9	830.1	539.6	509.9	29.79	18.115			
7,400.0	7,112.5	7,717.7	7,313.6	16.8	22.0	112.07	264.3	830.6	534.1	503.2	30.92	17.273			
7,456.5	7,115.1	7,774.1	7,313.4	17.3	22.1	111.82	320.7	830.9	533.0	501.4	31.66	16.836			
7,500.0	7,113.4	7,817.6	7,313.2	17.6	22.3	111.99	364.3	831.1	533.6	501.5	32.17	16.588			
7,600.0	7,112.9	7,917.6	7,312.9	18.6	22.8	112.01	464.3	831.5	533.7	499.9	33.83	15.776			
7,700.0	7,112.4	8,017.6	7,312.5	19.7	23.5	112.02	564.3	831.9	533.7	498.0	35.77	14.921			
7,800.0	7,112.0	8,117.6	7,312.2	20.9	24.3	112.03	664.3	832.3	533.8	495.8	37.95	14.064			
7,900.0	7,111.5	8,217.6	7,311.8	22.2	25.4	112.04	764.3	832.8	533.8	493.5	40.34	13.234			
8,000.0	7,111.0	8,317.6	7,311.5	23.5	26.5	112.05	864.3	833.2	533.9	491.0	42.89	12.448			
8,100.0	7,110.5	8,417.6	7,311.1	25.0	27.7	112.06	964.3	833.6	533.9	488.4	45.58	11.714			
8,200.0	7,110.1	8,517.6	7,310.8	26.5	29.1	112.08	1,064.3	834.0	534.0	485.6	48.39	11.036			
8,300.0	7,109.6	8,617.6	7,310.4	28.1	30.5	112.09	1,164.3	834.5	534.0	482.8	51.29	10.412			
8,400.0	7,109.1	8,717.6	7,310.1	29.7	31.9	112.10	1,264.3	834.9	534.1	479.8	54.28	9.840			
8,500.0	7,108.7	8,817.6	7,309.7	31.3	33.4	112.11	1,364.3	835.3	534.2	476.8	57.33	9.317			
8,600.0	7,108.2	8,917.6	7,309.4	33.0	35.0	112.12	1,464.3	835.7	534.2	473.8	60.44	8.838			
8,700.0	7,107.7	9,017.6	7,309.0	34.7	36.6	112.14	1,564.3	836.1	534.3	470.7	63.60	8.400			
8,800.0	7,107.2	9,117.6	7,308.7	36.4	38.2	112.15	1,664.3	836.6	534.3	467.5	66.81	7.998			
8,900.0	7,106.8	9,217.6	7,308.3	38.1	39.8	112.16	1,764.3	837.0	534.4	464.3	70.04	7.629			
9,000.0	7,106.3	9,317.6	7,308.0	39.8	41.5	112.17	1,864.3	837.4	534.4	461.1	73.32	7.289			
9,100.0	7,105.8	9,417.6	7,307.6	41.6	43.2	112.18	1,964.3	837.8	534.5	457.8	76.61	6.976			
9,200.0	7,105.4	9,517.6	7,307.3	43.4	44.9	112.20	2,064.3	838.3	534.5	454.6	79.94	6.687			
9,300.0	7,104.9	9,617.6	7,306.9	45.2	46.6	112.21	2,164.3	838.7	534.6	451.3	83.28	6.419			
9,400.0	7,104.4	9,717.6	7,306.6	47.0	48.4	112.22	2,264.3	839.1	534.6	448.0	86.64	6.170			
9,500.0	7,103.9	9,817.6	7,306.2	48.8	50.1	112.23	2,364.3	839.5	534.7	444.6	90.02	5.939			
9,600.0	7,103.5	9,917.6	7,305.9	50.6	51.9	112.24	2,464.3	840.0	534.7	441.3	93.41	5.724			
9,700.0	7,103.0	10,017.6	7,305.5	52.4	53.6	112.26	2,564.3	840.4	534.8	437.9	96.82	5.523			
9,800.0	7,102.5	10,117.6	7,305.2	54.2	55.4	112.27	2,664.3	840.8	534.8	434.6	100.23	5.336			
9,900.0	7,102.1	10,217.6	7,304.8	56.1	57.2	112.28	2,764.3	841.2	534.9	431.2	103.66	5.160			
10,000.0	7,101.6	10,317.6	7,304.5	57.9	59.0	112.29	2,864.3	841.7	534.9	427.8	107.10	4.995			

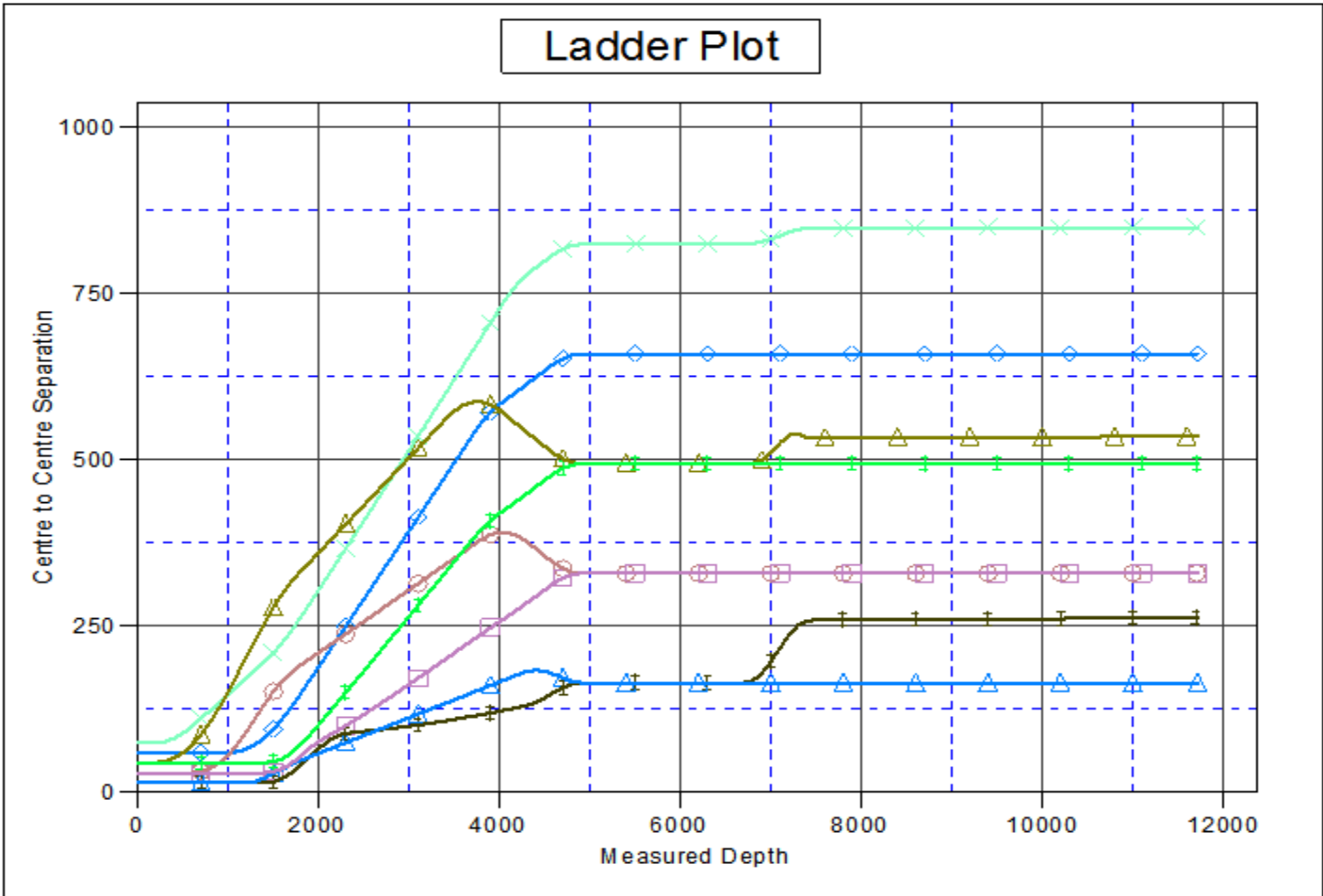
CC - Min centre to center distance or convergent point, SF - min separation factor, ES - min ellipse separation

Company:	Verdad Oil & Gas Corporation	Local Co-ordinate Reference:	Well Meehl 01N-65W-24-6N
Project:	SEC.24-T1N-R65W	TVD Reference:	WELL @ 5038.5ft (RKB - 16.5')
Reference Site:	Meehl 01N-65W-24 Pad Sec.24-T01N-R65W	MD Reference:	WELL @ 5038.5ft (RKB - 16.5')
Site Error:	0.0ft	North Reference:	True
Reference Well:	Meehl 01N-65W-24-6N	Survey Calculation Method:	Minimum Curvature
Well Error:	0.0ft	Output errors are at	2.00 sigma
Reference Wellbore	Wellbore #1	Database:	landmark
Reference Design:	Plan #1 (10-17-14)	Offset TVD Reference:	Offset Datum

Offset Design													Offset Site Error:	0.0 ft	
Survey Program: 0-MWD													Offset Well Error:		0.0 ft
Reference		Offset		Semi Major Axis			Distance						Warning		
Measured Depth (ft)	Vertical Depth (ft)	Measured Depth (ft)	Vertical Depth (ft)	Reference (ft)	Offset (ft)	Highside Toolface (°)	Offset Wellbore Centre +N/-S (ft)	+E/-W (ft)	Between Centres (ft)	Between Ellipses (ft)	Minimum Separation (ft)	Separation Factor			
10,100.0	7,101.1	10,417.6	7,304.1	59.7	60.8	112.30	2,964.3	842.1	535.0	424.4	110.54	4.839			
10,200.0	7,100.6	10,517.6	7,303.8	61.6	62.6	112.32	3,064.3	842.5	535.0	421.0	114.00	4.693			
10,300.0	7,100.2	10,617.6	7,303.4	63.4	64.4	112.33	3,164.3	842.9	535.1	417.6	117.46	4.556			
10,400.0	7,099.7	10,717.6	7,303.1	65.3	66.3	112.34	3,264.3	843.4	535.1	414.2	120.92	4.425			
10,500.0	7,099.2	10,817.6	7,302.7	67.1	68.1	112.35	3,364.3	843.8	535.2	410.8	124.39	4.302			
10,600.0	7,098.8	10,917.6	7,302.4	69.0	69.9	112.36	3,464.2	844.2	535.2	407.4	127.87	4.186			
10,700.0	7,098.3	11,017.6	7,302.0	70.9	71.8	112.37	3,564.2	844.6	535.3	403.9	131.35	4.075			
10,800.0	7,097.8	11,117.6	7,301.7	72.7	73.6	112.39	3,664.2	845.0	535.3	400.5	134.84	3.970			
10,900.0	7,097.3	11,217.6	7,301.3	74.6	75.5	112.40	3,764.2	845.5	535.4	397.1	138.33	3.870			
11,000.0	7,096.9	11,317.6	7,301.0	76.5	77.3	112.41	3,864.2	845.9	535.4	393.6	141.82	3.775			
11,100.0	7,096.4	11,417.6	7,300.7	78.3	79.2	112.42	3,964.2	846.3	535.5	390.2	145.32	3.685			
11,200.0	7,095.9	11,517.6	7,300.3	80.2	81.0	112.43	4,064.2	846.7	535.5	386.7	148.82	3.599			
11,300.0	7,095.5	11,617.6	7,300.0	82.1	82.9	112.45	4,164.2	847.2	535.6	383.3	152.32	3.516			
11,400.0	7,095.0	11,717.6	7,299.6	84.0	84.7	112.46	4,264.2	847.6	535.6	379.8	155.82	3.437			
11,500.0	7,094.5	11,817.6	7,299.3	85.8	86.6	112.47	4,364.2	848.0	535.7	376.4	159.33	3.362			
11,600.0	7,094.0	11,917.6	7,298.9	87.7	88.4	112.48	4,464.2	848.4	535.7	372.9	162.84	3.290			
11,700.0	7,093.6	12,017.6	7,298.6	89.6	90.3	112.49	4,564.2	848.9	535.8	369.4	166.35	3.221			
11,717.3	7,093.5	12,033.7	7,298.5	89.9	90.6	112.50	4,580.3	848.9	535.8	368.9	166.94	3.210 SF			

Company:	Verdad Oil & Gas Corporation	Local Co-ordinate Reference:	Well Meehl 01N-65W-24-6N
Project:	SEC.24-T1N-R65W	TVD Reference:	WELL @ 5038.5ft (RKB - 16.5')
Reference Site:	Meehl 01N-65W-24 Pad Sec.24-T01N-R65W	MD Reference:	WELL @ 5038.5ft (RKB - 16.5')
Site Error:	0.0ft	North Reference:	True
Reference Well:	Meehl 01N-65W-24-6N	Survey Calculation Method:	Minimum Curvature
Well Error:	0.0ft	Output errors are at	2.00 sigma
Reference Wellbore	Wellbore #1	Database:	landmark
Reference Design:	Plan #1 (10-17-14)	Offset TVD Reference:	Offset Datum

Reference Depths are relative to WELL @ 5038.5ft (RKB - 16.5') Coordinates are relative to: Meehl 01N-65W-24-6N
 Offset Depths are relative to Offset Datum Coordinate System is US State Plane 1983, Colorado Northern Zone
 Central Meridian is -105.500000 ° Grid Convergence at Surface is: 0.58°



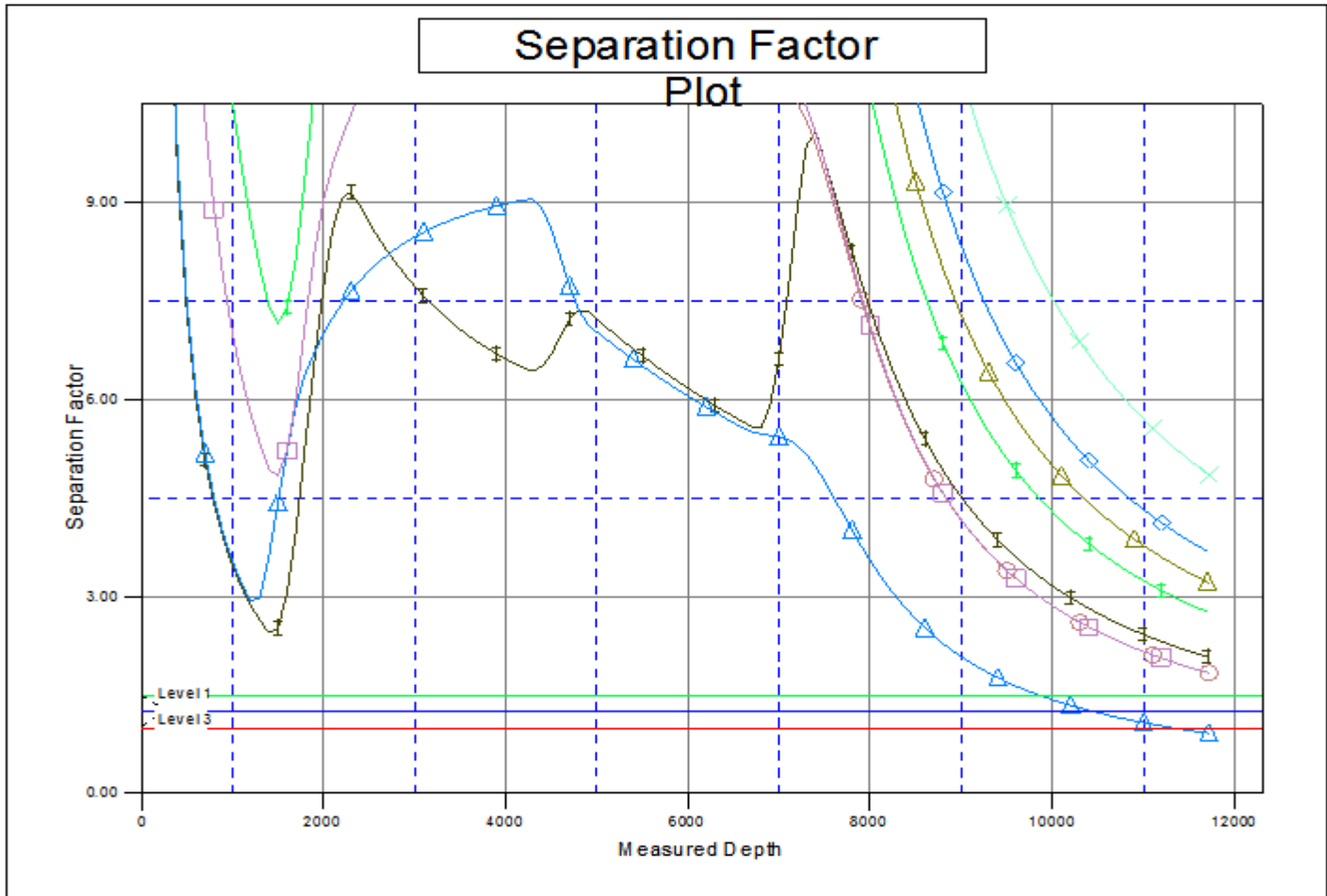
LEGEND

- W-24-2N, Wellbore #1, Plan #1 (10-17-14) V<
- Meehl 01N-65W-24-1C, Wellbore #1, Plan #1 (10-17-14) V<
- Meehl 01N-65W-24-3N, Wellbore #1 (10-17-14) V<
- W-24-5C, Wellbore #1, Plan #1 (10-17-14) V<
- Meehl 01N-65W-24-9C, Wellbore #1, Plan #1 (10-17-14) V<
- Meehl 01N-65W-24-4N, Wellbore #1 (10-17-14) V<
- W-24-8N, Wellbore #1, Plan #1 (10-17-14) V<
- Meehl 01N-65W-24-7N, Wellbore #1, Plan #1 (10-17-14) V0

Company:	Verdad Oil & Gas Corporation	Local Co-ordinate Reference:	Well Meehl 01N-65W-24-6N
Project:	SEC.24-T1N-R65W	TVD Reference:	WELL @ 5038.5ft (RKB - 16.5')
Reference Site:	Meehl 01N-65W-24 Pad Sec.24-T01N-R65W	MD Reference:	WELL @ 5038.5ft (RKB - 16.5')
Site Error:	0.0ft	North Reference:	True
Reference Well:	Meehl 01N-65W-24-6N	Survey Calculation Method:	Minimum Curvature
Well Error:	0.0ft	Output errors are at	2.00 sigma
Reference Wellbore	Wellbore #1	Database:	landmark
Reference Design:	Plan #1 (10-17-14)	Offset TVD Reference:	Offset Datum

Reference Depths are relative to WELL @ 5038.5ft (RKB - 16.5')
 Offset Depths are relative to Offset Datum
 Central Meridian is -105.500000 °

Coordinates are relative to: Meehl 01N-65W-24-6N
 Coordinate System is US State Plane 1983, Colorado Northern Zone
 Grid Convergence at Surface is: 0.58°



LEGEND

- W-24-2N, Wellbore #1, Plan #1 (10-17-14) V<← Meehl 01N-65W-24-1C, Wellbore #1, Plan #1 (10-17-14) V<← Meehl 01N-65W-24-3N, Wellbore #1
- W-24-5C, Wellbore #1, Plan #1 (10-17-14) V<← Meehl 01N-65W-24-9C, Wellbore #1, Plan #1 (10-17-14) V<← Meehl 01N-65W-24-4N, Wellbore #1
- W-24-8N, Wellbore #1, Plan #1 (10-17-14) V<← Meehl 01N-65W-24-7N, Wellbore #1, Plan #1 (10-17-14) V0