

Verdad Oil & Gas Corporation

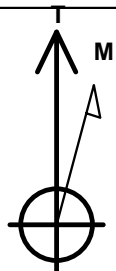
Well Name: **Meehl 01N-65W-24-5C**

Surface Location: Meehl 01N-65W-24 Pad Sec.24-T01N-R65W
North American Datum 1983 , US State Plane 1983 , Colorado Northern Zone
Ground Elevation: 5022.0

+N/-S	+E/-W	Northing	Easting	Latitude	Longitude	Slot
0.0	0.0	1255137.15	3249724.39	40.030292	-104.608205	
RKB - 16.5' WELL @ 5038.5ft (RKB - 16.5')						

WELLBORE TARGET DETAILS

Name	TVD	+N/-S	+E/-W	Shape
460' Setback BHL	1.0	4585.4	-760.2	Polygon
460' Setback SHL	1.0	189.7	-760.2	Polygon
Sectionline	1.0	-270.3	-760.2	Polygon
SHL 270'FSL & 1503'FEL	1.0	0.0	0.0	Point
BHL 460'FNL & 1320'FEL	7298.5	4582.8	203.8	Point



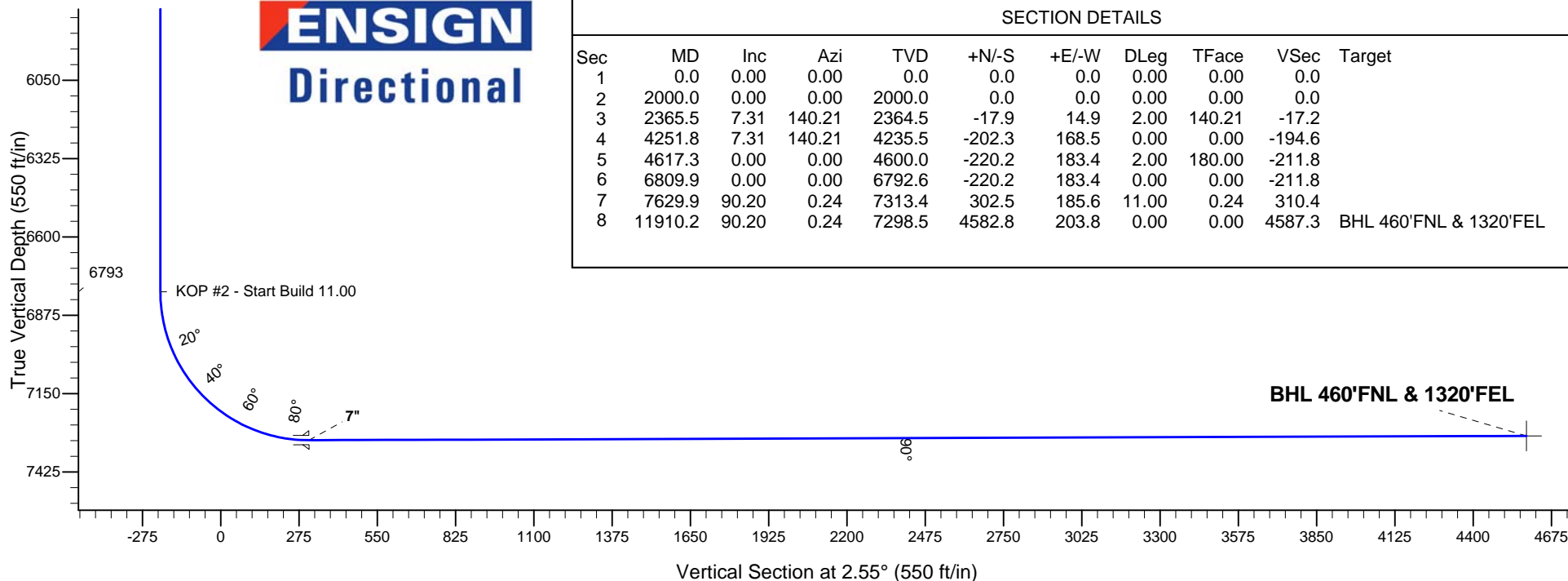
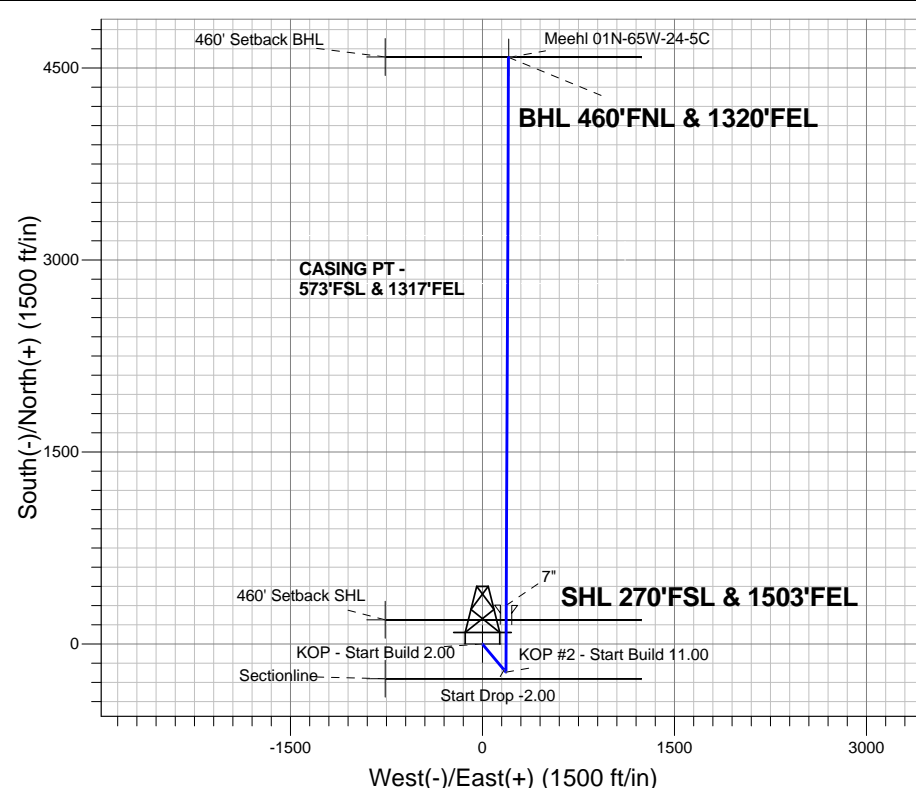
Azimuths to True North
Magnetic North: 8.30°

Magnetic Field
Strength: 52600.0nT
Dip Angle: 66.66°
Date: 10/17/2014
Model: IGRF2010

Meehl 01N-65W-24 Pad Sec.24-T01N-R65W
Meehl 01N-65W-24-5C
Plan #1 (10-17-14)

ANNOTATIONS

TVD	MD	Annotation
2000.0	2000.0	KOP - Start Build 2.00
4235.5	4251.8	Start Drop -2.00
6792.6	6809.9	KOP #2 - Start Build 11.00
7298.5	11910.2	TD at 11910.2



SECTION DETAILS

Sec	MD	Inc	Azi	TVD	+N/-S	+E/-W	DLeg	TFace	VSec	Target
1	0.0	0.00	0.00	0.0	0.0	0.0	0.00	0.00	0.0	
2	2000.0	0.00	0.00	2000.0	0.0	0.0	0.00	0.00	0.0	
3	2365.5	7.31	140.21	2364.5	-17.9	14.9	2.00	140.21	-17.2	
4	4251.8	7.31	140.21	4235.5	-202.3	168.5	0.00	0.00	-194.6	
5	4617.3	0.00	0.00	4600.0	-220.2	183.4	2.00	180.00	-211.8	
6	6809.9	0.00	0.00	6792.6	-220.2	183.4	0.00	0.00	-211.8	
7	7629.9	90.20	0.24	7313.4	302.5	185.6	11.00	0.24	310.4	
8	11910.2	90.20	0.24	7298.5	4582.8	203.8	0.00	0.00	4587.3	BHL 460'FNL & 1320'FEL



Verdad Oil & Gas Corporation

SEC.24-T1N-R65W

Meehl 01N-65W-24 Pad Sec.24-T01N-R65W

Meehl 01N-65W-24-5C

Wellbore #1

Plan: Plan #1 (10-17-14)

Standard Planning Report

20 October, 2014

Database:	landmark	Local Co-ordinate Reference:	Well Meehl 01N-65W-24-5C
Company:	Verdad Oil & Gas Corporation	TVD Reference:	WELL @ 5038.5ft (RKB - 16.5')
Project:	SEC.24-T1N-R65W	MD Reference:	WELL @ 5038.5ft (RKB - 16.5')
Site:	Meehl 01N-65W-24 Pad Sec.24-T01N-R65W	North Reference:	True
Well:	Meehl 01N-65W-24-5C	Survey Calculation Method:	Minimum Curvature
Wellbore:	Wellbore #1		
Design:	Plan #1 (10-17-14)		

Project	SEC.24-T1N-R65W		
Map System:	US State Plane 1983	System Datum:	Mean Sea Level
Geo Datum:	North American Datum 1983		Using Well Reference Point
Map Zone:	Colorado Northern Zone		Using geodetic scale factor

Site						Meehl 01N-65W-24 Pad Sec.24-T01N-R65W											
Site Position:						Northing:			1,255,136.20ft			Latitude:			40.030291		
From:			Lat/Long			Easting:			3,249,664.19ft			Longitude:			-104.608420		
Position Uncertainty:			0.0 ft			Slot Radius:			"			Grid Convergence:			0.58 °		

Well	Meehl 01N-65W-24-5C					
Well Position	+N/-S	0.3 ft	Northing:	1,255,137.14 ft	Latitude:	40.030292
	+E/-W	60.2 ft	Easting:	3,249,724.39 ft	Longitude:	-104.608205
Position Uncertainty		0.0 ft	Wellhead Elevation:	ft	Ground Level:	5,022.0 ft

Wellbore	Wellbore #1				
Magnetics	Model Name	Sample Date	Declination (°)	Dip Angle (°)	Field Strength (nT)
	IGRF2010	10/17/2014	8.30	66.66	52,600

Design	Plan #1 (10-17-14)			
Audit Notes:				
Version:	Phase:	PROTOTYPE	Tie On Depth:	0.0
Vertical Section:	Depth From (TVD) (ft)	+N/-S (ft)	+E/-W (ft)	Direction (°)
	0.0	0.0	0.0	2.55

Plan Sections										
Measured Depth (ft)	Inclination (°)	Azimuth (°)	Vertical Depth (ft)	+N/-S (ft)	+E/-W (ft)	Dogleg Rate (°/100ft)	Build Rate (°/100ft)	Turn Rate (°/100ft)	TFO (°)	Target
0.0	0.00	0.00	0.0	0.0	0.0	0.00	0.00	0.00	0.00	
2,000.0	0.00	0.00	2,000.0	0.0	0.0	0.00	0.00	0.00	0.00	
2,365.5	7.31	140.21	2,364.5	-17.9	14.9	2.00	2.00	0.00	140.21	
4,251.8	7.31	140.21	4,235.5	-202.3	168.5	0.00	0.00	0.00	0.00	
4,617.3	0.00	0.00	4,600.0	-220.2	183.4	2.00	-2.00	0.00	180.00	
6,809.9	0.00	0.00	6,792.6	-220.2	183.4	0.00	0.00	0.00	0.00	
7,629.9	90.20	0.24	7,313.4	302.5	185.6	11.00	11.00	0.00	0.24	
11,910.3	90.20	0.24	7,298.5	4,582.8	203.8	0.00	0.00	0.00	0.00	BHL 460'FNL & 132

Database: landmark
Company: Verdad Oil & Gas Corporation
Project: SEC.24-T1N-R65W
Site: Meehl 01N-65W-24 Pad Sec.24-T01N-R65W
Well: Meehl 01N-65W-24-5C
Wellbore: Wellbore #1
Design: Plan #1 (10-17-14)

Local Co-ordinate Reference: Well Meehl 01N-65W-24-5C
TVD Reference: WELL @ 5038.5ft (RKB - 16.5')
MD Reference: WELL @ 5038.5ft (RKB - 16.5')
North Reference: True
Survey Calculation Method: Minimum Curvature

Planned Survey									
Measured Depth (ft)	Inclination (°)	Azimuth (°)	Vertical Depth (ft)	+N/-S (ft)	+E/-W (ft)	Vertical Section (ft)	Dogleg Rate (°/100ft)	Build Rate (°/100ft)	Turn Rate (°/100ft)
0.0	0.00	0.00	0.0	0.0	0.0	0.0	0.00	0.00	0.00
100.0	0.00	0.00	100.0	0.0	0.0	0.0	0.00	0.00	0.00
200.0	0.00	0.00	200.0	0.0	0.0	0.0	0.00	0.00	0.00
300.0	0.00	0.00	300.0	0.0	0.0	0.0	0.00	0.00	0.00
400.0	0.00	0.00	400.0	0.0	0.0	0.0	0.00	0.00	0.00
500.0	0.00	0.00	500.0	0.0	0.0	0.0	0.00	0.00	0.00
600.0	0.00	0.00	600.0	0.0	0.0	0.0	0.00	0.00	0.00
700.0	0.00	0.00	700.0	0.0	0.0	0.0	0.00	0.00	0.00
800.0	0.00	0.00	800.0	0.0	0.0	0.0	0.00	0.00	0.00
900.0	0.00	0.00	900.0	0.0	0.0	0.0	0.00	0.00	0.00
1,000.0	0.00	0.00	1,000.0	0.0	0.0	0.0	0.00	0.00	0.00
1,100.0	0.00	0.00	1,100.0	0.0	0.0	0.0	0.00	0.00	0.00
1,200.0	0.00	0.00	1,200.0	0.0	0.0	0.0	0.00	0.00	0.00
1,300.0	0.00	0.00	1,300.0	0.0	0.0	0.0	0.00	0.00	0.00
1,400.0	0.00	0.00	1,400.0	0.0	0.0	0.0	0.00	0.00	0.00
1,500.0	0.00	0.00	1,500.0	0.0	0.0	0.0	0.00	0.00	0.00
1,600.0	0.00	0.00	1,600.0	0.0	0.0	0.0	0.00	0.00	0.00
1,700.0	0.00	0.00	1,700.0	0.0	0.0	0.0	0.00	0.00	0.00
1,800.0	0.00	0.00	1,800.0	0.0	0.0	0.0	0.00	0.00	0.00
1,900.0	0.00	0.00	1,900.0	0.0	0.0	0.0	0.00	0.00	0.00
2,000.0	0.00	0.00	2,000.0	0.0	0.0	0.0	0.00	0.00	0.00
KOP - Start Build 2.00									
2,100.0	2.00	140.21	2,100.0	-1.3	1.1	-1.3	2.00	2.00	0.00
2,200.0	4.00	140.21	2,199.8	-5.4	4.5	-5.2	2.00	2.00	0.00
2,300.0	6.00	140.21	2,299.5	-12.1	10.0	-11.6	2.00	2.00	0.00
2,365.5	7.31	140.21	2,364.5	-17.9	14.9	-17.2	2.00	2.00	0.00
2,400.0	7.31	140.21	2,398.7	-21.3	17.7	-20.5	0.00	0.00	0.00
2,500.0	7.31	140.21	2,497.9	-31.0	25.9	-29.9	0.00	0.00	0.00
2,600.0	7.31	140.21	2,597.1	-40.8	34.0	-39.3	0.00	0.00	0.00
2,700.0	7.31	140.21	2,696.3	-50.6	42.1	-48.7	0.00	0.00	0.00
2,800.0	7.31	140.21	2,795.5	-60.4	50.3	-58.1	0.00	0.00	0.00
2,900.0	7.31	140.21	2,894.7	-70.1	58.4	-67.5	0.00	0.00	0.00
3,000.0	7.31	140.21	2,993.9	-79.9	66.6	-76.9	0.00	0.00	0.00
3,100.0	7.31	140.21	3,093.0	-89.7	74.7	-86.3	0.00	0.00	0.00
3,200.0	7.31	140.21	3,192.2	-99.5	82.9	-95.7	0.00	0.00	0.00
3,300.0	7.31	140.21	3,291.4	-109.3	91.0	-105.1	0.00	0.00	0.00
3,400.0	7.31	140.21	3,390.6	-119.0	99.1	-114.5	0.00	0.00	0.00
3,500.0	7.31	140.21	3,489.8	-128.8	107.3	-123.9	0.00	0.00	0.00
3,600.0	7.31	140.21	3,589.0	-138.6	115.4	-133.3	0.00	0.00	0.00
3,700.0	7.31	140.21	3,688.2	-148.4	123.6	-142.7	0.00	0.00	0.00
3,800.0	7.31	140.21	3,787.4	-158.1	131.7	-152.1	0.00	0.00	0.00
3,900.0	7.31	140.21	3,886.5	-167.9	139.9	-161.5	0.00	0.00	0.00
4,000.0	7.31	140.21	3,985.7	-177.7	148.0	-170.9	0.00	0.00	0.00
4,100.0	7.31	140.21	4,084.9	-187.5	156.1	-180.3	0.00	0.00	0.00
4,200.0	7.31	140.21	4,184.1	-197.2	164.3	-189.7	0.00	0.00	0.00
4,251.8	7.31	140.21	4,235.5	-202.3	168.5	-194.6	0.00	0.00	0.00
Start Drop -2.00									
4,300.0	6.35	140.21	4,283.3	-206.7	172.2	-198.9	2.00	-2.00	0.00
4,400.0	4.35	140.21	4,382.9	-213.9	178.1	-205.7	2.00	-2.00	0.00
4,500.0	2.35	140.21	4,482.7	-218.4	181.9	-210.1	2.00	-2.00	0.00
4,600.0	0.35	140.21	4,582.7	-220.2	183.4	-211.8	2.00	-2.00	0.00
4,617.3	0.00	0.00	4,600.0	-220.2	183.4	-211.8	2.00	-2.00	0.00
4,700.0	0.00	0.00	4,682.7	-220.2	183.4	-211.8	0.00	0.00	0.00
4,800.0	0.00	0.00	4,782.7	-220.2	183.4	-211.8	0.00	0.00	0.00

Database: landmark
Company: Verdad Oil & Gas Corporation
Project: SEC.24-T1N-R65W
Site: Meehl 01N-65W-24 Pad Sec.24-T01N-R65W
Well: Meehl 01N-65W-24-5C
Wellbore: Wellbore #1
Design: Plan #1 (10-17-14)

Local Co-ordinate Reference: Well Meehl 01N-65W-24-5C
TVD Reference: WELL @ 5038.5ft (RKB - 16.5')
MD Reference: WELL @ 5038.5ft (RKB - 16.5')
North Reference: True
Survey Calculation Method: Minimum Curvature

Planned Survey									
Measured Depth (ft)	Inclination (°)	Azimuth (°)	Vertical Depth (ft)	+N/-S (ft)	+E/-W (ft)	Vertical Section (ft)	Dogleg Rate (°/100ft)	Build Rate (°/100ft)	Turn Rate (°/100ft)
4,900.0	0.00	0.00	4,882.7	-220.2	183.4	-211.8	0.00	0.00	0.00
5,000.0	0.00	0.00	4,982.7	-220.2	183.4	-211.8	0.00	0.00	0.00
5,100.0	0.00	0.00	5,082.7	-220.2	183.4	-211.8	0.00	0.00	0.00
5,200.0	0.00	0.00	5,182.7	-220.2	183.4	-211.8	0.00	0.00	0.00
5,300.0	0.00	0.00	5,282.7	-220.2	183.4	-211.8	0.00	0.00	0.00
5,400.0	0.00	0.00	5,382.7	-220.2	183.4	-211.8	0.00	0.00	0.00
5,500.0	0.00	0.00	5,482.7	-220.2	183.4	-211.8	0.00	0.00	0.00
5,600.0	0.00	0.00	5,582.7	-220.2	183.4	-211.8	0.00	0.00	0.00
5,700.0	0.00	0.00	5,682.7	-220.2	183.4	-211.8	0.00	0.00	0.00
5,800.0	0.00	0.00	5,782.7	-220.2	183.4	-211.8	0.00	0.00	0.00
5,900.0	0.00	0.00	5,882.7	-220.2	183.4	-211.8	0.00	0.00	0.00
6,000.0	0.00	0.00	5,982.7	-220.2	183.4	-211.8	0.00	0.00	0.00
6,100.0	0.00	0.00	6,082.7	-220.2	183.4	-211.8	0.00	0.00	0.00
6,200.0	0.00	0.00	6,182.7	-220.2	183.4	-211.8	0.00	0.00	0.00
6,300.0	0.00	0.00	6,282.7	-220.2	183.4	-211.8	0.00	0.00	0.00
6,400.0	0.00	0.00	6,382.7	-220.2	183.4	-211.8	0.00	0.00	0.00
6,500.0	0.00	0.00	6,482.7	-220.2	183.4	-211.8	0.00	0.00	0.00
6,600.0	0.00	0.00	6,582.7	-220.2	183.4	-211.8	0.00	0.00	0.00
6,700.0	0.00	0.00	6,682.7	-220.2	183.4	-211.8	0.00	0.00	0.00
6,800.0	0.00	0.00	6,782.7	-220.2	183.4	-211.8	0.00	0.00	0.00
6,809.9	0.00	0.00	6,792.6	-220.2	183.4	-211.8	0.00	0.00	0.00
KOP #2 - Start Build 11.00									
6,900.0	9.91	0.24	6,882.2	-212.4	183.4	-204.1	11.00	11.00	0.00
7,000.0	20.91	0.24	6,978.5	-185.9	183.5	-177.5	11.00	11.00	0.00
7,100.0	31.91	0.24	7,067.9	-141.5	183.7	-133.2	11.00	11.00	0.00
7,200.0	42.91	0.24	7,147.2	-80.8	184.0	-72.6	11.00	11.00	0.00
7,300.0	53.91	0.24	7,213.5	-6.1	184.3	2.1	11.00	11.00	0.00
7,400.0	64.91	0.24	7,264.3	79.8	184.7	87.9	11.00	11.00	0.00
7,500.0	75.91	0.24	7,297.8	173.9	185.1	181.9	11.00	11.00	0.00
7,600.0	86.91	0.24	7,312.7	272.6	185.5	280.6	11.00	11.00	0.00
7,629.9	90.20	0.24	7,313.4	302.5	185.6	310.4	11.00	11.00	0.00
7"									
7,700.0	90.20	0.24	7,313.2	372.6	185.9	380.5	0.00	0.00	0.00
7,800.0	90.20	0.24	7,312.8	472.6	186.3	480.4	0.00	0.00	0.00
7,900.0	90.20	0.24	7,312.5	572.6	186.8	580.3	0.00	0.00	0.00
8,000.0	90.20	0.24	7,312.1	672.6	187.2	680.2	0.00	0.00	0.00
8,100.0	90.20	0.24	7,311.8	772.6	187.6	780.2	0.00	0.00	0.00
8,200.0	90.20	0.24	7,311.5	872.6	188.0	880.1	0.00	0.00	0.00
8,300.0	90.20	0.24	7,311.1	972.6	188.5	980.0	0.00	0.00	0.00
8,400.0	90.20	0.24	7,310.8	1,072.6	188.9	1,079.9	0.00	0.00	0.00
8,500.0	90.20	0.24	7,310.4	1,172.6	189.3	1,179.8	0.00	0.00	0.00
8,600.0	90.20	0.24	7,310.1	1,272.6	189.8	1,279.8	0.00	0.00	0.00
8,700.0	90.20	0.24	7,309.7	1,372.6	190.2	1,379.7	0.00	0.00	0.00
8,800.0	90.20	0.24	7,309.4	1,472.6	190.6	1,479.6	0.00	0.00	0.00
8,900.0	90.20	0.24	7,309.0	1,572.6	191.0	1,579.5	0.00	0.00	0.00
9,000.0	90.20	0.24	7,308.7	1,672.6	191.5	1,679.4	0.00	0.00	0.00
9,100.0	90.20	0.24	7,308.3	1,772.6	191.9	1,779.4	0.00	0.00	0.00
9,200.0	90.20	0.24	7,308.0	1,872.6	192.3	1,879.3	0.00	0.00	0.00
9,300.0	90.20	0.24	7,307.6	1,972.6	192.7	1,979.2	0.00	0.00	0.00
9,400.0	90.20	0.24	7,307.3	2,072.6	193.2	2,079.1	0.00	0.00	0.00
9,500.0	90.20	0.24	7,306.9	2,172.6	193.6	2,179.0	0.00	0.00	0.00
9,600.0	90.20	0.24	7,306.6	2,272.6	194.0	2,278.9	0.00	0.00	0.00
9,700.0	90.20	0.24	7,306.2	2,372.6	194.4	2,378.9	0.00	0.00	0.00
9,800.0	90.20	0.24	7,305.9	2,472.6	194.9	2,478.8	0.00	0.00	0.00

Database:	landmark	Local Co-ordinate Reference:	Well Meehl 01N-65W-24-5C
Company:	Verdad Oil & Gas Corporation	TVD Reference:	WELL @ 5038.5ft (RKB - 16.5')
Project:	SEC.24-T1N-R65W	MD Reference:	WELL @ 5038.5ft (RKB - 16.5')
Site:	Meehl 01N-65W-24 Pad Sec.24-T01N-R65W	North Reference:	True
Well:	Meehl 01N-65W-24-5C	Survey Calculation Method:	Minimum Curvature
Wellbore:	Wellbore #1		
Design:	Plan #1 (10-17-14)		

Planned Survey									
Measured Depth (ft)	Inclination (°)	Azimuth (°)	Vertical Depth (ft)	+N/-S (ft)	+E/-W (ft)	Vertical Section (ft)	Dogleg Rate (°/100ft)	Build Rate (°/100ft)	Turn Rate (°/100ft)
9,900.0	90.20	0.24	7,305.5	2,572.6	195.3	2,578.7	0.00	0.00	0.00
10,000.0	90.20	0.24	7,305.2	2,672.6	195.7	2,678.6	0.00	0.00	0.00
10,100.0	90.20	0.24	7,304.8	2,772.6	196.1	2,778.5	0.00	0.00	0.00
10,200.0	90.20	0.24	7,304.5	2,872.6	196.6	2,878.5	0.00	0.00	0.00
10,300.0	90.20	0.24	7,304.1	2,972.6	197.0	2,978.4	0.00	0.00	0.00
10,400.0	90.20	0.24	7,303.8	3,072.6	197.4	3,078.3	0.00	0.00	0.00
10,500.0	90.20	0.24	7,303.4	3,172.6	197.8	3,178.2	0.00	0.00	0.00
10,600.0	90.20	0.24	7,303.1	3,272.6	198.3	3,278.1	0.00	0.00	0.00
10,700.0	90.20	0.24	7,302.7	3,372.6	198.7	3,378.0	0.00	0.00	0.00
10,800.0	90.20	0.24	7,302.4	3,472.6	199.1	3,478.0	0.00	0.00	0.00
10,900.0	90.20	0.24	7,302.0	3,572.5	199.5	3,577.9	0.00	0.00	0.00
11,000.0	90.20	0.24	7,301.7	3,672.5	200.0	3,677.8	0.00	0.00	0.00
11,100.0	90.20	0.24	7,301.3	3,772.5	200.4	3,777.7	0.00	0.00	0.00
11,200.0	90.20	0.24	7,301.0	3,872.5	200.8	3,877.6	0.00	0.00	0.00
11,300.0	90.20	0.24	7,300.6	3,972.5	201.2	3,977.6	0.00	0.00	0.00
11,400.0	90.20	0.24	7,300.3	4,072.5	201.7	4,077.5	0.00	0.00	0.00
11,500.0	90.20	0.24	7,299.9	4,172.5	202.1	4,177.4	0.00	0.00	0.00
11,600.0	90.20	0.24	7,299.6	4,272.5	202.5	4,277.3	0.00	0.00	0.00
11,700.0	90.20	0.24	7,299.2	4,372.5	202.9	4,377.2	0.00	0.00	0.00
11,800.0	90.20	0.24	7,298.9	4,472.5	203.4	4,477.2	0.00	0.00	0.00
11,900.0	90.20	0.24	7,298.5	4,572.5	203.8	4,577.1	0.00	0.00	0.00
11,910.2	90.20	0.24	7,298.5	4,582.7	203.8	4,587.3	0.00	0.00	0.00
TD at 11910.2									
11,910.3	90.20	0.24	7,298.5	4,582.8	203.8	4,587.3	0.00	0.00	0.00

Targets									
Target Name	- hit/miss target	Dip Angle (°)	Dip Dir. (°)	TVD (ft)	+N/-S (ft)	+E/-W (ft)	Northing (ft)	Easting (ft)	
- Shape									Latitude Longitude
Sectionline		0.00	0.00	1.0	-270.3	-760.2	1,254,859.18	3,248,966.97	40.029550 -104.610920
- plan misses by 806.8ft at 1.0ft MD (1.0 TVD, 0.0 N, 0.0 E)									
- Polygon									
Point 1				1.0	0.0	0.0	1,254,859.18	3,248,966.97	
Point 2				1.0	0.0	2,000.0	1,254,879.30	3,250,966.79	
460' Setback BHL		0.00	0.00	1.0	4,585.4	-760.2	1,259,714.45	3,248,918.15	40.042879 -104.610920
- plan misses by 4648.0ft at 1.0ft MD (1.0 TVD, 0.0 N, 0.0 E)									
- Polygon									
Point 1				1.0	0.0	0.0	1,259,714.45	3,248,918.15	
Point 2				1.0	0.0	2,000.0	1,259,734.57	3,250,917.97	
460' Setback SHL		0.00	0.00	1.0	189.7	-760.2	1,255,319.14	3,248,962.34	40.030813 -104.610920
- plan misses by 783.5ft at 1.0ft MD (1.0 TVD, 0.0 N, 0.0 E)									
- Polygon									
Point 1				1.0	0.0	0.0	1,255,319.14	3,248,962.34	
Point 2				1.0	0.0	2,000.0	1,255,339.25	3,250,962.16	
SHL 270'FSL & 1503'		0.00	0.00	1.0	0.0	0.0	1,255,137.17	3,249,724.39	40.030292 -104.608205
- plan hits target									
- Point									
BHL 460'FNL & 1320'		0.00	0.00	7,298.5	4,582.8	203.8	1,259,721.57	3,249,882.12	40.042872 -104.607477
- plan hits target									
- Point									

Database:	landmark	Local Co-ordinate Reference:	Well Meehl 01N-65W-24-5C
Company:	Verdad Oil & Gas Corporation	TVD Reference:	WELL @ 5038.5ft (RKB - 16.5')
Project:	SEC.24-T1N-R65W	MD Reference:	WELL @ 5038.5ft (RKB - 16.5')
Site:	Meehl 01N-65W-24 Pad Sec.24-T01N-R65W	North Reference:	True
Well:	Meehl 01N-65W-24-5C	Survey Calculation Method:	Minimum Curvature
Wellbore:	Wellbore #1		
Design:	Plan #1 (10-17-14)		

Casing Points					
Measured Depth (ft)	Vertical Depth (ft)	Name	Casing Diameter (")	Hole Diameter (")	
7,629.9	7,313.4	7"	7	7-1/2	

Plan Annotations					
Measured Depth (ft)	Vertical Depth (ft)	Local Coordinates			
		+N/-S (ft)	+E/-W (ft)	Comment	
2,000.0	2,000.0	0.0	0.0	KOP - Start Build 2.00	
4,251.8	4,235.5	-202.3	168.5	Start Drop -2.00	
6,809.9	6,792.6	-220.2	183.4	KOP #2 - Start Build 11.00	
11,910.2	7,298.5	4,582.7	203.8	TD at 11910.2	



Verdad Oil & Gas Corporation

SEC.24-T1N-R65W

Meehl 01N-65W-24 Pad Sec.24-T01N-R65W

Meehl 01N-65W-24-5C

Wellbore #1

Plan #1 (10-17-14)

Anticollision Report

20 October, 2014

Company:	Verdad Oil & Gas Corporation	Local Co-ordinate Reference:	Well Meehl 01N-65W-24-5C
Project:	SEC.24-T1N-R65W	TVD Reference:	WELL @ 5038.5ft (RKB - 16.5')
Reference Site:	Meehl 01N-65W-24 Pad Sec.24-T01N-R65W	MD Reference:	WELL @ 5038.5ft (RKB - 16.5')
Site Error:	0.0ft	North Reference:	True
Reference Well:	Meehl 01N-65W-24-5C	Survey Calculation Method:	Minimum Curvature
Well Error:	0.0ft	Output errors are at	2.00 sigma
Reference Wellbore	Wellbore #1	Database:	landmark
Reference Design:	Plan #1 (10-17-14)	Offset TVD Reference:	Offset Datum

Reference	Plan #1 (10-17-14)		
Filter type:	NO GLOBAL FILTER: Using user defined selection & filtering criteria		
Interpolation Method:	MD Interval 100.0ft	Error Model:	ISCWSA
Depth Range:	Unlimited	Scan Method:	Closest Approach 3D
Results Limited by:	Maximum center-center distance of 1,000.0ft	Error Surface:	Elliptical Conic
Warning Levels Evaluated at:	2.00 Sigma		

Survey Tool Program	Date 10/20/2014			
From (ft)	To (ft)	Survey (Wellbore)	Tool Name	Description
0.0	11,909.5	Plan #1 (10-17-14) (Wellbore #1)	MWD	MWD - Standard

Summary						
Site Name	Reference Measured Depth (ft)	Offset Measured Depth (ft)	Distance Between Centres (ft)	Distance Between Ellipses (ft)	Separation Factor	Warning
Offset Well - Wellbore - Design						
Meehl 01N-65W-24 Pad Sec.24-T01N-R65W						
Meehl 01N-65W-24-1C - Wellbore #1 - Plan #1 (10-17-14)	200.0	200.0	60.2	59.5	89.292	CC, ES
Meehl 01N-65W-24-1C - Wellbore #1 - Plan #1 (10-17-14)	11,910.2	11,924.9	660.2	480.5	3.674	SF
Meehl 01N-65W-24-2N - Wellbore #1 - Plan #1 (10-17-14)	1,000.0	1,000.0	45.1	40.8	10.558	CC, ES
Meehl 01N-65W-24-2N - Wellbore #1 - Plan #1 (10-17-14)	11,910.2	11,716.6	535.8	367.7	3.188	SF
Meehl 01N-65W-24-3N - Wellbore #1 - Plan #1 (10-17-14)	1,600.0	1,600.0	30.2	23.3	4.341	CC, ES
Meehl 01N-65W-24-3N - Wellbore #1 - Plan #1 (10-17-14)	11,910.2	11,708.2	388.6	231.7	2.476	SF
Meehl 01N-65W-24-4N - Wellbore #1 - Plan #1 (10-17-14)	1,914.7	1,914.7	14.9	6.6	1.791	CC, ES, SF
Meehl 01N-65W-24-6N - Wellbore #1 - Plan #1 (10-17-14)	1,400.0	1,400.0	14.8	8.8	2.446	CC, ES
Meehl 01N-65W-24-6N - Wellbore #1 - Plan #1 (10-17-14)	11,910.2	11,715.6	263.1	136.4	2.077	SF
Meehl 01N-65W-24-7N - Wellbore #1 - Plan #1 (10-17-14)	1,200.0	1,200.0	30.0	24.8	5.796	CC, ES
Meehl 01N-65W-24-7N - Wellbore #1 - Plan #1 (10-17-14)	11,910.2	11,734.2	388.3	230.1	2.455	SF
Meehl 01N-65W-24-8N - Wellbore #1 - Plan #1 (10-17-14)	600.0	600.0	44.8	42.3	18.122	CC, ES
Meehl 01N-65W-24-8N - Wellbore #1 - Plan #1 (10-17-14)	11,910.2	11,756.4	535.8	366.6	3.167	SF
Meehl 01N-65W-24-9C - Wellbore #1 - Plan #1 (10-17-14)	200.0	200.0	59.9	59.3	88.875	CC, ES
Meehl 01N-65W-24-9C - Wellbore #1 - Plan #1 (10-17-14)	11,910.2	12,033.4	659.9	480.2	3.672	SF

Offset Design Meehl 01N-65W-24 Pad Sec.24-T01N-R65W - Meehl 01N-65W-24-1C - Wellbore #1 - Plan #1 (10-17-1)												
Survey Program: 0-MWD												
Reference												
Measured Depth (ft)	Vertical Depth (ft)	Offset Measured Depth (ft)	Offset Vertical Depth (ft)	Semi Major Axis Reference (ft)	Semi Major Axis Offset (ft)	Highside Toolface (°)	Offset Wellbore Centre +N/-S (ft)	Offset Wellbore Centre +E/-W (ft)	Distance Between Centres (ft)	Distance Between Ellipses (ft)	Minimum Separation (ft)	Separation Factor
0.0	0.0	0.0	0.0	0.0	0.0	-90.33	-0.3	-60.2	60.2	60.0	0.22	267.876
100.0	100.0	100.0	100.0	0.1	0.1	-90.33	-0.3	-60.2	60.2	59.5	0.67	89.292 CC, ES
200.0	200.0	200.0	200.0	0.3	0.3	-90.33	-0.3	-60.2	60.2	60.6	1.10	55.928
300.0	300.0	298.1	298.1	0.6	0.5	-91.05	-1.1	-61.7	61.7	64.8	1.54	43.073
400.0	400.0	396.0	395.9	0.8	0.8	-93.01	-3.5	-66.1	66.4	72.2	2.00	37.032
500.0	500.0	493.5	493.0	1.0	1.0	-95.73	-7.4	-73.5	74.2	82.7	2.49	34.136
600.0	600.0	591.1	589.9	1.2	1.3	-98.66	-12.7	-83.6	85.2	94.1	3.00	32.364
700.0	700.0	690.3	688.4	1.5	1.6	-101.10	-18.5	-94.6	97.1	105.6	3.51	31.111
800.0	800.0	789.6	786.8	1.7	1.9	-102.99	-24.4	-105.5	109.1	117.2	4.02	30.188
900.0	900.0	888.8	885.3	1.9	2.2	-104.51	-30.2	-116.5	121.2	128.9	4.52	29.485
1,000.0	1,000.0	988.0	983.7	2.1	2.5	-105.76	-36.0	-127.4	133.4	140.6	5.03	28.935
1,100.0	1,100.0	1,087.2	1,082.1	2.4	2.8	-106.79	-41.8	-138.4	145.7	152.4	5.54	28.493
1,200.0	1,200.0	1,186.4	1,180.6	2.6	3.2	-107.67	-47.6	-149.4	158.0			

CC - Min centre to center distance or convergent point, SF - min separation factor, ES - min ellipse separation

Company:	Verdad Oil & Gas Corporation	Local Co-ordinate Reference:	Well Meehl 01N-65W-24-5C
Project:	SEC.24-T1N-R65W	TVD Reference:	WELL @ 5038.5ft (RKB - 16.5')
Reference Site:	Meehl 01N-65W-24 Pad Sec.24-T01N-R65W	MD Reference:	WELL @ 5038.5ft (RKB - 16.5')
Site Error:	0.0ft	North Reference:	True
Reference Well:	Meehl 01N-65W-24-5C	Survey Calculation Method:	Minimum Curvature
Well Error:	0.0ft	Output errors are at	2.00 sigma
Reference Wellbore	Wellbore #1	Database:	landmark
Reference Design:	Plan #1 (10-17-14)	Offset TVD Reference:	Offset Datum

Offset Design												Offset Site Error:	0.0 ft
Survey Program: 0-MWD												Offset Well Error:	0.0 ft
Reference		Offset		Semi Major Axis			Distance						Warning
Measured Depth (ft)	Vertical Depth (ft)	Measured Depth (ft)	Vertical Depth (ft)	Reference (ft)	Offset (ft)	Highside Toolface (°)	Offset Wellbore Centre +N/-S (ft)	+E/-W (ft)	Between Centres (ft)	Between Ellipses (ft)	Minimum Separation (ft)	Separation Factor	
1,300.0	1,300.0	1,285.6	1,279.0	2.8	3.5	-108.42	-53.4	-160.3	170.3	164.2	6.05	28.132	
1,400.0	1,400.0	1,384.9	1,377.4	3.0	3.8	-109.06	-59.2	-171.3	182.6	176.0	6.56	27.831	
1,500.0	1,500.0	1,484.1	1,475.9	3.3	4.1	-109.63	-65.0	-182.2	195.0	187.9	7.07	27.577	
1,600.0	1,600.0	1,583.3	1,574.3	3.5	4.5	-110.13	-70.8	-193.2	207.3	199.8	7.58	27.361	
1,700.0	1,700.0	1,682.5	1,672.8	3.7	4.8	-110.57	-76.6	-204.1	219.7	211.7	8.09	27.173	
1,800.0	1,800.0	1,781.7	1,771.2	3.9	5.1	-110.96	-82.4	-215.1	232.1	223.6	8.59	27.010	
1,900.0	1,900.0	1,880.9	1,869.6	4.2	5.5	-111.32	-88.2	-226.1	244.6	235.5	9.10	26.867	
2,000.0	2,000.0	1,980.2	1,968.1	4.4	5.8	-111.64	-94.0	-237.0	257.0	247.4	9.61	26.739	
2,100.0	2,100.0	2,079.3	2,066.4	4.6	6.1	107.97	-99.8	-248.0	269.9	260.6	9.31	28.981	
2,200.0	2,199.8	2,178.2	2,164.6	4.8	6.4	108.44	-105.6	-258.9	284.0	274.3	9.73	29.196	
2,300.0	2,299.5	2,276.9	2,262.4	5.0	6.8	109.44	-111.4	-269.8	299.2	289.1	10.15	29.480	
2,400.0	2,398.7	2,375.0	2,359.9	5.2	7.1	110.97	-117.1	-280.6	315.8	305.2	10.59	29.811	
2,500.0	2,497.9	2,473.1	2,457.2	5.4	7.4	112.65	-122.9	-291.5	332.8	321.8	11.06	30.099	
2,600.0	2,597.1	2,571.2	2,554.5	5.6	7.7	114.16	-128.6	-302.3	350.2	338.6	11.54	30.352	
2,700.0	2,696.3	2,669.3	2,651.8	5.8	8.1	115.54	-134.3	-313.1	367.7	355.7	12.03	30.577	
2,800.0	2,795.5	2,767.4	2,749.1	6.1	8.4	116.78	-140.1	-324.0	385.4	372.9	12.52	30.776	
2,900.0	2,894.7	2,865.5	2,846.4	6.3	8.7	117.92	-145.8	-334.8	403.3	390.3	13.03	30.955	
3,000.0	2,993.9	2,963.5	2,943.7	6.6	9.0	118.96	-151.6	-345.6	421.4	407.8	13.54	31.116	
3,100.0	3,093.0	3,061.6	3,041.1	6.9	9.4	119.92	-157.3	-356.5	439.5	425.5	14.06	31.262	
3,200.0	3,192.2	3,159.7	3,138.4	7.1	9.7	120.80	-163.0	-367.3	457.8	443.2	14.58	31.395	
3,300.0	3,291.4	3,257.8	3,235.7	7.4	10.0	121.61	-168.8	-378.1	476.2	461.1	15.11	31.516	
3,400.0	3,390.6	3,355.9	3,333.0	7.7	10.3	122.37	-174.5	-389.0	494.6	479.0	15.64	31.628	
3,500.0	3,489.8	3,453.9	3,430.3	8.0	10.7	123.07	-180.3	-399.8	513.1	497.0	16.17	31.732	
3,600.0	3,589.0	3,552.0	3,527.6	8.3	11.0	123.72	-186.0	-410.6	531.7	515.0	16.71	31.827	
3,700.0	3,688.2	3,650.1	3,624.9	8.6	11.3	124.32	-191.7	-421.5	550.4	533.2	17.24	31.917	
3,800.0	3,787.4	3,748.2	3,722.2	8.9	11.6	124.89	-197.5	-432.3	569.1	551.3	17.78	32.000	
3,900.0	3,886.5	3,846.3	3,819.6	9.2	11.9	125.42	-203.2	-443.1	587.9	569.6	18.33	32.078	
4,000.0	3,985.7	3,944.4	3,916.9	9.5	12.3	125.92	-208.9	-454.0	606.7	587.8	18.87	32.152	
4,100.0	4,084.9	4,060.3	4,032.1	9.8	12.6	126.52	-215.1	-465.5	624.5	605.1	19.41	32.180	
4,200.0	4,184.1	4,183.6	4,155.0	10.1	12.8	127.32	-219.2	-473.4	638.7	618.8	19.92	32.059	
4,300.0	4,283.3	4,307.7	4,279.1	10.4	13.0	128.33	-220.9	-476.5	648.9	628.4	20.44	31.748	
4,400.0	4,382.9	4,411.5	4,382.9	10.6	13.1	129.09	-220.9	-476.6	654.8	633.9	20.90	31.329	
4,500.0	4,482.7	4,511.3	4,482.7	10.8	13.3	129.54	-220.9	-476.6	658.5	637.2	21.32	30.892	
4,600.0	4,582.7	4,611.3	4,582.7	11.0	13.4	129.72	-220.9	-476.6	660.0	638.3	21.70	30.413	
4,700.0	4,682.7	4,711.3	4,682.7	11.2	13.6	-90.06	-220.9	-476.6	660.0	638.0	22.05	29.927	
4,800.0	4,782.7	4,811.3	4,782.7	11.4	13.7	-90.06	-220.9	-476.6	660.0	637.6	22.42	29.442	
4,900.0	4,882.7	4,911.3	4,882.7	11.6	13.9	-90.06	-220.9	-476.6	660.0	637.2	22.78	28.969	
5,000.0	4,982.7	5,011.3	4,982.7	11.8	14.0	-90.06	-220.9	-476.6	660.0	636.9	23.15	28.508	
5,100.0	5,082.7	5,111.3	5,082.7	11.9	14.2	-90.06	-220.9	-476.6	660.0	636.5	23.52	28.057	
5,200.0	5,182.7	5,211.3	5,182.7	12.1	14.3	-90.06	-220.9	-476.6	660.0	636.1	23.90	27.618	
5,300.0	5,282.7	5,311.3	5,282.7	12.3	14.5	-90.06	-220.9	-476.6	660.0	635.7	24.27	27.189	
5,400.0	5,382.7	5,411.3	5,382.7	12.5	14.6	-90.06	-220.9	-476.6	660.0	635.4	24.65	26.771	
5,500.0	5,482.7	5,511.3	5,482.7	12.7	14.8	-90.06	-220.9	-476.6	660.0	635.0	25.04	26.363	
5,600.0	5,582.7	5,611.3	5,582.7	12.9	15.0	-90.06	-220.9	-476.6	660.0	634.6	25.42	25.965	
5,700.0	5,682.7	5,711.3	5,682.7	13.1	15.1	-90.06	-220.9	-476.6	660.0	634.2	25.81	25.577	
5,800.0	5,782.7	5,811.3	5,782.7	13.3	15.3	-90.06	-220.9	-476.6	660.0	633.8	26.19	25.198	
5,900.0	5,882.7	5,911.3	5,882.7	13.5	15.5	-90.06	-220.9	-476.6	660.0	633.4	26.58	24.828	
6,000.0	5,982.7	6,011.3	5,982.7	13.7	15.6	-90.06	-220.9	-476.6	660.0	633.0	26.97	24.468	
6,100.0	6,082.7	6,111.3	6,082.7	13.9	15.8	-90.06	-220.9	-476.6	660.0	632.6	27.37	24.116	
6,200.0	6,182.7	6,211.3	6,182.7	14.1	16.0	-90.06	-220.9	-476.6	660.0	632.2	27.76	23.773	
6,300.0	6,282.7	6,311.3	6,282.7	14.3	16.1	-90.06	-220.9	-476.6	660.0	631.8	28.16	23.438	
6,400.0	6,382.7	6,411.3	6,382.7	14.5	16.3	-90.06	-220.9	-476.6	660.0	631.5	28.56	23.111	

CC - Min centre to center distance or convergent point, SF - min separation factor, ES - min ellipse separation

Company:	Verdad Oil & Gas Corporation	Local Co-ordinate Reference:	Well Meehl 01N-65W-24-5C
Project:	SEC.24-T1N-R65W	TVD Reference:	WELL @ 5038.5ft (RKB - 16.5')
Reference Site:	Meehl 01N-65W-24 Pad Sec.24-T01N-R65W	MD Reference:	WELL @ 5038.5ft (RKB - 16.5')
Site Error:	0.0ft	North Reference:	True
Reference Well:	Meehl 01N-65W-24-5C	Survey Calculation Method:	Minimum Curvature
Well Error:	0.0ft	Output errors are at	2.00 sigma
Reference Wellbore	Wellbore #1	Database:	landmark
Reference Design:	Plan #1 (10-17-14)	Offset TVD Reference:	Offset Datum

Offset Design												Offset Site Error:	0.0 ft
Survey Program: 0-MWD												Offset Well Error:	0.0 ft
Reference		Offset		Semi Major Axis			Distance						
Measured Depth (ft)	Vertical Depth (ft)	Measured Depth (ft)	Vertical Depth (ft)	Reference (ft)	Offset (ft)	Highside Toolface (°)	Offset Wellbore Centre +N/-S (ft)	+E/-W (ft)	Between Centres (ft)	Between Ellipses (ft)	Minimum Separation (ft)	Separation Factor	Warning
6,500.0	6,482.7	6,511.3	6,482.7	14.7	16.5	-90.06	-220.9	-476.6	660.0	631.1	28.96	22.792	
6,600.0	6,582.7	6,611.3	6,582.7	14.9	16.7	-90.06	-220.9	-476.6	660.0	630.6	29.36	22.481	
6,700.0	6,682.7	6,711.3	6,682.7	15.1	16.8	-90.06	-220.9	-476.6	660.0	630.2	29.76	22.177	
6,800.0	6,782.7	6,811.3	6,782.7	15.3	17.0	-90.06	-220.9	-476.6	660.0	629.8	30.17	21.880	
6,900.0	6,882.7	6,911.9	6,882.8	15.5	17.2	-90.30	-213.1	-476.6	660.0	629.5	30.51	21.635	
7,000.0	6,978.5	7,012.6	6,979.7	15.6	17.3	-90.29	-186.2	-476.5	660.0	629.3	30.70	21.499	
7,100.0	7,067.9	7,113.2	7,069.5	15.7	17.3	-90.26	-141.2	-476.3	660.0	629.2	30.81	21.424	
7,200.0	7,147.2	7,213.7	7,149.0	15.7	17.3	-90.23	-79.9	-476.0	660.0	629.1	30.93	21.339	
7,300.0	7,213.5	7,314.2	7,215.2	15.8	17.3	-90.18	-4.6	-475.7	660.0	628.8	31.19	21.160	
7,400.0	7,264.3	7,414.5	7,265.7	15.8	17.3	-90.13	82.0	-475.3	660.0	628.3	31.70	20.818	
7,500.0	7,297.8	7,514.7	7,298.6	16.2	17.5	-90.08	176.5	-474.9	660.0	627.5	32.55	20.276	
7,600.0	7,312.7	7,614.8	7,312.9	16.8	17.8	-90.02	275.4	-474.5	660.0	626.3	33.75	19.555	
7,700.0	7,313.2	7,714.8	7,313.2	17.6	18.5	-90.00	375.4	-474.1	660.0	624.7	35.30	18.700	
7,800.0	7,312.8	7,814.8	7,312.8	18.6	19.4	-90.00	475.4	-473.7	660.0	622.9	37.16	17.761	
7,900.0	7,312.5	7,914.8	7,312.5	19.7	20.4	-90.00	575.4	-473.3	660.0	620.7	39.31	16.789	
8,000.0	7,312.1	8,014.8	7,312.1	20.9	21.6	-90.00	675.4	-472.8	660.0	618.3	41.71	15.826	
8,100.0	7,311.8	8,114.8	7,311.8	22.2	22.9	-90.00	775.4	-472.4	660.0	615.7	44.30	14.899	
8,200.0	7,311.5	8,214.8	7,311.5	23.6	24.2	-90.00	875.4	-472.0	660.1	613.0	47.06	14.024	
8,300.0	7,311.1	8,314.8	7,311.1	25.0	25.6	-90.00	975.4	-471.6	660.1	610.1	49.97	13.209	
8,400.0	7,310.8	8,414.8	7,310.8	26.5	27.1	-90.00	1,075.4	-471.2	660.1	607.1	52.99	12.456	
8,500.0	7,310.4	8,514.8	7,310.4	28.1	28.6	-90.00	1,175.4	-470.7	660.1	604.0	56.11	11.764	
8,600.0	7,310.1	8,614.8	7,310.1	29.7	30.2	-90.00	1,275.4	-470.3	660.1	600.8	59.31	11.128	
8,700.0	7,309.7	8,714.8	7,309.7	31.3	31.8	-90.00	1,375.4	-469.9	660.1	597.5	62.59	10.546	
8,800.0	7,309.4	8,814.8	7,309.4	33.0	33.5	-90.00	1,475.4	-469.5	660.1	594.2	65.92	10.013	
8,900.0	7,309.0	8,914.8	7,309.0	34.7	35.2	-90.00	1,575.4	-469.1	660.1	590.8	69.31	9.524	
9,000.0	7,308.7	9,014.8	7,308.7	36.4	36.8	-90.00	1,675.4	-468.6	660.1	587.4	72.73	9.075	
9,100.0	7,308.3	9,114.8	7,308.3	38.1	38.6	-90.00	1,775.4	-468.2	660.1	583.9	76.20	8.663	
9,200.0	7,308.0	9,214.8	7,308.0	39.9	40.3	-90.00	1,875.4	-467.8	660.1	580.4	79.70	8.282	
9,300.0	7,307.6	9,314.8	7,307.6	41.6	42.0	-90.00	1,975.4	-467.4	660.1	576.9	83.23	7.931	
9,400.0	7,307.3	9,414.8	7,307.3	43.4	43.8	-90.00	2,075.3	-466.9	660.1	573.3	86.78	7.607	
9,500.0	7,306.9	9,514.8	7,306.9	45.2	45.6	-90.00	2,175.3	-466.5	660.1	569.8	90.36	7.306	
9,600.0	7,306.6	9,614.8	7,306.6	47.0	47.4	-90.00	2,275.3	-466.1	660.1	566.2	93.95	7.026	
9,700.0	7,306.2	9,714.8	7,306.2	48.8	49.2	-90.00	2,375.3	-465.7	660.1	562.6	97.57	6.766	
9,800.0	7,305.9	9,814.8	7,305.9	50.6	51.0	-90.00	2,475.3	-465.3	660.1	558.9	101.20	6.523	
9,900.0	7,305.5	9,914.8	7,305.5	52.4	52.8	-90.00	2,575.3	-464.8	660.1	555.3	104.84	6.296	
10,000.0	7,305.2	10,014.8	7,305.2	54.3	54.6	-90.00	2,675.3	-464.4	660.1	551.6	108.50	6.084	
10,100.0	7,304.8	10,114.8	7,304.8	56.1	56.4	-90.00	2,775.3	-464.0	660.1	548.0	112.17	5.885	
10,200.0	7,304.5	10,214.8	7,304.5	57.9	58.2	-90.00	2,875.3	-463.6	660.1	544.3	115.84	5.699	
10,300.0	7,304.1	10,314.8	7,304.1	59.8	60.1	-90.00	2,975.3	-463.2	660.2	540.6	119.53	5.523	
10,400.0	7,303.8	10,414.8	7,303.8	61.6	61.9	-90.00	3,075.3	-462.7	660.2	536.9	123.23	5.357	
10,500.0	7,303.4	10,514.8	7,303.4	63.5	63.8	-90.00	3,175.3	-462.3	660.2	533.2	126.93	5.201	
10,600.0	7,303.1	10,614.8	7,303.1	65.3	65.6	-90.00	3,275.3	-461.9	660.2	529.5	130.64	5.053	
10,700.0	7,302.7	10,714.8	7,302.7	67.2	67.5	-90.00	3,375.3	-461.5	660.2	525.8	134.36	4.913	
10,800.0	7,302.4	10,814.8	7,302.4	69.1	69.3	-90.00	3,475.3	-461.1	660.2	522.1	138.08	4.781	
10,900.0	7,302.0	10,914.8	7,302.0	70.9	71.2	-90.00	3,575.3	-460.6	660.2	518.4	141.81	4.655	
11,000.0	7,301.7	11,014.8	7,301.7	72.8	73.0	-90.00	3,675.3	-460.2	660.2	514.6	145.55	4.536	
11,100.0	7,301.3	11,114.8	7,301.3	74.7	74.9	-90.00	3,775.3	-459.8	660.2	510.9	149.29	4.422	
11,200.0	7,301.0	11,214.8	7,301.0	76.5	76.8	-90.00	3,875.3	-459.4	660.2	507.2	153.03	4.314	
11,300.0	7,300.6	11,314.8	7,300.6	78.4	78.6	-90.00	3,975.3	-459.0	660.2	503.4	156.78	4.211	
11,400.0	7,300.3	11,414.8	7,300.3	80.3	80.5	-90.00	4,075.3	-458.5	660.2	499.7	160.53	4.113	
11,500.0	7,299.9	11,514.8	7,299.9	82.2	82.4	-90.00	4,175.3	-458.1	660.2	495.9	164.28	4.019	
11,600.0	7,299.6	11,614.8	7,299.6	84.0	84.2	-90.00	4,275.3	-457.7	660.2	492.2	168.04	3.929	

CC - Min centre to center distance or convergent point, SF - min separation factor, ES - min ellipse separation

Company:	Verdad Oil & Gas Corporation	Local Co-ordinate Reference:	Well Meehl 01N-65W-24-5C
Project:	SEC.24-T1N-R65W	TVD Reference:	WELL @ 5038.5ft (RKB - 16.5')
Reference Site:	Meehl 01N-65W-24 Pad Sec.24-T01N-R65W	MD Reference:	WELL @ 5038.5ft (RKB - 16.5')
Site Error:	0.0ft	North Reference:	True
Reference Well:	Meehl 01N-65W-24-5C	Survey Calculation Method:	Minimum Curvature
Well Error:	0.0ft	Output errors are at	2.00 sigma
Reference Wellbore	Wellbore #1	Database:	landmark
Reference Design:	Plan #1 (10-17-14)	Offset TVD Reference:	Offset Datum

Offset Design Meehl 01N-65W-24 Pad Sec.24-T01N-R65W - Meehl 01N-65W-24-1C - Wellbore #1 - Plan #1 (10-17-1													Offset Site Error:	0.0 ft
Survey Program: 0-MWD													Offset Well Error:	0.0 ft
Reference	Offset	Semi Major Axis			Distance									Warning
Measured Depth (ft)	Vertical Depth (ft)	Measured Depth (ft)	Vertical Depth (ft)	Reference (ft)	Offset (ft)	Highside Toolface (°)	Offset Wellbore Centre +N/-S (ft)	+E/-W (ft)	Between Centres (ft)	Between Ellipses (ft)	Minimum Separation (ft)	Separation Factor		
11,700.0	7,299.2	11,714.8	7,299.2	85.9	86.1	-90.00	4,375.3	-457.3	660.2	488.4	171.80	3.843		
11,800.0	7,298.9	11,814.8	7,298.9	87.8	88.0	-90.00	4,475.3	-456.9	660.2	484.7	175.57	3.760		
11,900.0	7,298.5	11,914.8	7,298.5	89.7	89.9	-90.00	4,575.3	-456.4	660.2	480.9	179.34	3.682		
11,900.4	7,298.5	11,915.2	7,298.5	89.7	89.9	-90.00	4,575.7	-456.4	660.2	480.9	179.35	3.681		
11,910.2	7,298.5	11,924.9	7,298.5	89.8	90.1	-90.00	4,585.3	-456.4	660.2	480.5	179.68	3.674 SF		

Company:	Verdad Oil & Gas Corporation	Local Co-ordinate Reference:	Well Meehl 01N-65W-24-5C
Project:	SEC.24-T1N-R65W	TVD Reference:	WELL @ 5038.5ft (RKB - 16.5')
Reference Site:	Meehl 01N-65W-24 Pad Sec.24-T01N-R65W	MD Reference:	WELL @ 5038.5ft (RKB - 16.5')
Site Error:	0.0ft	North Reference:	True
Reference Well:	Meehl 01N-65W-24-5C	Survey Calculation Method:	Minimum Curvature
Well Error:	0.0ft	Output errors are at	2.00 sigma
Reference Wellbore	Wellbore #1	Database:	landmark
Reference Design:	Plan #1 (10-17-14)	Offset TVD Reference:	Offset Datum

Offset Design													Offset Site Error:	0.0 ft
Survey Program: 0-MWD													Offset Well Error:	0.0 ft
Reference		Offset		Semi Major Axis			Distance							Warning
Measured Depth (ft)	Vertical Depth (ft)	Measured Depth (ft)	Vertical Depth (ft)	Reference (ft)	Offset (ft)	Highside Toolface (°)	Offset Wellbore Centre +N/-S (ft)	+E/-W (ft)	Between Centres (ft)	Between Ellipses (ft)	Minimum Separation (ft)	Separation Factor		
0.0	0.0	0.0	0.0	0.0	0.0	-89.98	0.0	-45.1	45.1					
100.0	100.0	100.0	100.0	0.1	0.1	-89.98	0.0	-45.1	45.1	44.9	0.22	200.593		
200.0	200.0	200.0	200.0	0.3	0.3	-89.98	0.0	-45.1	45.1	44.4	0.67	66.864		
300.0	300.0	300.0	300.0	0.6	0.6	-89.98	0.0	-45.1	45.1	44.0	1.12	40.119		
400.0	400.0	400.0	400.0	0.8	0.8	-89.98	0.0	-45.1	45.1	43.5	1.57	28.656		
500.0	500.0	500.0	500.0	1.0	1.0	-89.98	0.0	-45.1	45.1	43.1	2.02	22.288		
600.0	600.0	600.0	600.0	1.2	1.2	-89.98	0.0	-45.1	45.1	42.6	2.47	18.236		
700.0	700.0	700.0	700.0	1.5	1.5	-89.98	0.0	-45.1	45.1	42.2	2.92	15.430		
800.0	800.0	800.0	800.0	1.7	1.7	-89.98	0.0	-45.1	45.1	41.7	3.37	13.373		
900.0	900.0	900.0	900.0	1.9	1.9	-89.98	0.0	-45.1	45.1	41.3	3.82	11.800		
1,000.0	1,000.0	1,000.0	1,000.0	2.1	2.1	-89.98	0.0	-45.1	45.1	40.8	4.27	10.558 CC, ES		
1,100.0	1,100.0	1,098.8	1,098.7	2.4	2.3	-91.33	-1.1	-46.4	46.4	41.7	4.69	9.890		
1,200.0	1,200.0	1,197.3	1,197.1	2.6	2.5	-94.91	-4.3	-50.3	50.6	45.5	5.10	9.911		
1,300.0	1,300.0	1,295.4	1,294.8	2.8	2.7	-99.69	-9.7	-56.8	57.8	52.3	5.53	10.470		
1,400.0	1,400.0	1,393.1	1,391.9	3.0	2.9	-104.61	-17.1	-65.8	68.5	62.5	5.96	11.476		
1,500.0	1,500.0	1,492.2	1,490.2	3.3	3.2	-108.55	-25.4	-75.7	80.5	74.1	6.42	12.536		
1,600.0	1,600.0	1,591.4	1,588.5	3.5	3.4	-111.46	-33.7	-85.7	92.8	85.9	6.89	13.477		
1,700.0	1,700.0	1,690.5	1,686.8	3.7	3.7	-113.68	-42.0	-95.7	105.3	98.0	7.36	14.309		
1,800.0	1,800.0	1,789.7	1,785.0	3.9	4.0	-115.43	-50.2	-105.7	118.0	110.1	7.84	15.045		
1,900.0	1,900.0	1,888.8	1,883.3	4.2	4.3	-116.84	-58.5	-115.7	130.7	122.4	8.32	15.700		
2,000.0	2,000.0	1,988.0	1,981.6	4.4	4.6	-118.00	-66.8	-125.6	143.5	134.7	8.81	16.283		
2,100.0	2,100.0	2,087.1	2,079.9	4.6	4.9	101.19	-75.1	-135.6	156.6	147.6	8.99	17.415		
2,200.0	2,199.8	2,186.1	2,178.0	4.8	5.2	101.80	-83.3	-145.6	170.5	161.1	9.40	18.141		
2,300.0	2,299.5	2,284.8	2,276.0	5.0	5.5	103.31	-91.6	-155.5	185.1	175.3	9.82	18.863		
2,400.0	2,398.7	2,383.3	2,373.5	5.2	5.8	105.56	-99.8	-165.4	200.8	190.6	10.25	19.587		
2,500.0	2,497.9	2,481.6	2,471.0	5.4	6.1	107.84	-108.0	-175.3	217.0	206.3	10.71	20.261		
2,600.0	2,597.1	2,579.9	2,568.5	5.6	6.4	109.81	-116.2	-185.2	233.5	222.4	11.19	20.878		
2,700.0	2,696.3	2,678.3	2,666.0	5.8	6.8	111.51	-124.4	-195.1	250.3	238.6	11.67	21.443		
2,800.0	2,795.5	2,776.6	2,763.5	6.1	7.1	113.00	-132.6	-205.0	267.2	255.0	12.17	21.958		
2,900.0	2,894.7	2,874.9	2,861.0	6.3	7.4	114.32	-140.8	-214.9	284.3	271.6	12.67	22.430		
3,000.0	2,993.9	2,973.3	2,958.5	6.6	7.7	115.48	-149.0	-224.8	301.5	288.3	13.19	22.862		
3,100.0	3,093.0	3,071.6	3,056.0	6.9	8.0	116.52	-157.2	-234.7	318.8	305.1	13.71	23.257		
3,200.0	3,192.2	3,169.9	3,153.4	7.1	8.4	117.45	-165.5	-244.6	336.2	322.0	14.23	23.621		
3,300.0	3,291.4	3,268.3	3,250.9	7.4	8.7	118.29	-173.7	-254.4	353.7	339.0	14.77	23.955		
3,400.0	3,390.6	3,366.6	3,348.4	7.7	9.0	119.05	-181.9	-264.3	371.3	356.0	15.30	24.264		
3,500.0	3,489.8	3,464.9	3,445.9	8.0	9.3	119.74	-190.1	-274.2	388.9	373.0	15.84	24.549		
3,600.0	3,589.0	3,563.2	3,543.4	8.3	9.7	120.37	-198.3	-284.1	406.6	390.2	16.38	24.813		
3,700.0	3,688.2	3,663.8	3,643.1	8.6	10.0	120.97	-206.6	-294.2	424.2	407.3	16.93	25.055		
3,800.0	3,787.4	3,777.0	3,755.6	8.9	10.3	121.78	-214.2	-303.3	439.8	422.3	17.46	25.184		
3,900.0	3,886.5	3,890.9	3,869.3	9.2	10.5	122.85	-219.0	-309.1	452.2	434.2	17.98	25.148		
4,000.0	3,985.7	4,005.2	3,983.5	9.5	10.7	124.18	-220.9	-311.3	461.4	442.9	18.49	24.958		
4,100.0	4,084.9	4,106.5	4,084.9	9.8	10.9	125.48	-220.9	-311.4	468.7	449.7	18.97	24.708		
4,200.0	4,184.1	4,205.7	4,184.1	10.1	11.0	126.72	-220.9	-311.4	476.3	456.8	19.44	24.494		
4,300.0	4,283.3	4,305.0	4,283.3	10.4	11.2	127.94	-220.9	-311.4	483.8	463.8	19.92	24.284		
4,400.0	4,382.9	4,404.5	4,382.9	10.6	11.3	128.89	-220.9	-311.4	489.6	469.2	20.37	24.039		
4,500.0	4,482.7	4,504.4	4,482.7	10.8	11.5	129.47	-220.9	-311.4	493.3	472.5	20.78	23.734		
4,600.0	4,582.7	4,604.3	4,582.7	11.0	11.7	129.71	-220.9	-311.4	494.8	473.6	21.17	23.366		
4,700.0	4,682.7	4,704.3	4,682.7	11.2	11.9	-90.08	-220.9	-311.4	494.8	473.2	21.55	22.964		
4,800.0	4,782.7	4,804.3	4,782.7	11.4	12.0	-90.08	-220.9	-311.4	494.8	472.9	21.92	22.568		
4,900.0	4,882.7	4,904.3	4,882.7	11.6	12.2	-90.08	-220.9	-311.4	494.8	472.5	22.31	22.182		
5,000.0	4,982.7	5,004.3	4,982.7	11.8	12.4	-90.08	-220.9	-311.4	494.8	472.1	22.69	21.807		
5,100.0	5,082.7	5,104.3	5,082.7	11.9	12.6	-90.08	-220.9	-311.4	494.8	471.7	23.07	21.443		

CC - Min centre to center distance or convergent point, SF - min separation factor, ES - min ellipse separation

Company:	Verdad Oil & Gas Corporation	Local Co-ordinate Reference:	Well Meehl 01N-65W-24-5C
Project:	SEC.24-T1N-R65W	TVD Reference:	WELL @ 5038.5ft (RKB - 16.5')
Reference Site:	Meehl 01N-65W-24 Pad Sec.24-T01N-R65W	MD Reference:	WELL @ 5038.5ft (RKB - 16.5')
Site Error:	0.0ft	North Reference:	True
Reference Well:	Meehl 01N-65W-24-5C	Survey Calculation Method:	Minimum Curvature
Well Error:	0.0ft	Output errors are at	2.00 sigma
Reference Wellbore	Wellbore #1	Database:	landmark
Reference Design:	Plan #1 (10-17-14)	Offset TVD Reference:	Offset Datum

Offset Design												Offset Site Error:	0.0 ft
Survey Program: 0-MWD												Offset Well Error:	0.0 ft
Reference		Offset		Semi Major Axis			Distance						
Measured Depth (ft)	Vertical Depth (ft)	Measured Depth (ft)	Vertical Depth (ft)	Reference (ft)	Offset (ft)	Highside Toolface (°)	Offset Wellbore Centre +N/-S (ft)	+E/-W (ft)	Between Centres (ft)	Between Ellipses (ft)	Minimum Separation (ft)	Separation Factor	Warning
5,200.0	5,182.7	5,204.3	5,182.7	12.1	12.7	-90.08	-220.9	-311.4	494.8	471.3	23.46	21.088	
5,300.0	5,282.7	5,304.3	5,282.7	12.3	12.9	-90.08	-220.9	-311.4	494.8	470.9	23.85	20.743	
5,400.0	5,382.7	5,404.3	5,382.7	12.5	13.1	-90.08	-220.9	-311.4	494.8	470.5	24.25	20.408	
5,500.0	5,482.7	5,504.3	5,482.7	12.7	13.3	-90.08	-220.9	-311.4	494.8	470.1	24.64	20.081	
5,600.0	5,582.7	5,604.3	5,582.7	12.9	13.5	-90.08	-220.9	-311.4	494.8	469.8	25.04	19.763	
5,700.0	5,682.7	5,704.3	5,682.7	13.1	13.7	-90.08	-220.9	-311.4	494.8	469.4	25.43	19.454	
5,800.0	5,782.7	5,804.3	5,782.7	13.3	13.8	-90.08	-220.9	-311.4	494.8	469.0	25.83	19.153	
5,900.0	5,882.7	5,904.3	5,882.7	13.5	14.0	-90.08	-220.9	-311.4	494.8	468.6	26.23	18.860	
6,000.0	5,982.7	6,004.3	5,982.7	13.7	14.2	-90.08	-220.9	-311.4	494.8	468.1	26.64	18.575	
6,100.0	6,082.7	6,104.3	6,082.7	13.9	14.4	-90.08	-220.9	-311.4	494.8	467.7	27.04	18.298	
6,200.0	6,182.7	6,204.3	6,182.7	14.1	14.6	-90.08	-220.9	-311.4	494.8	467.3	27.45	18.027	
6,300.0	6,282.7	6,304.3	6,282.7	14.3	14.8	-90.08	-220.9	-311.4	494.8	466.9	27.85	17.764	
6,400.0	6,382.7	6,404.3	6,382.7	14.5	15.0	-90.08	-220.9	-311.4	494.8	466.5	28.26	17.507	
6,500.0	6,482.7	6,504.3	6,482.7	14.7	15.2	-90.08	-220.9	-311.4	494.8	466.1	28.67	17.257	
6,600.0	6,582.7	6,604.3	6,582.7	14.9	15.4	-90.08	-220.9	-311.4	494.8	465.7	29.08	17.013	
6,663.3	6,646.0	6,667.7	6,646.0	15.0	15.5	-89.76	-218.2	-311.4	494.8	465.4	29.33	16.869	
6,700.0	6,682.7	6,703.9	6,681.8	15.1	15.5	-89.19	-213.2	-311.4	494.8	465.3	29.46	16.794	
6,800.0	6,782.7	6,797.4	6,772.0	15.3	15.6	-86.40	-189.1	-311.3	495.7	466.0	29.77	16.650	
6,900.0	6,882.2	6,883.2	6,849.8	15.5	15.7	-82.86	-153.1	-311.1	499.1	469.1	30.00	16.639	
7,000.0	6,978.5	6,965.0	6,917.5	15.6	15.7	-79.33	-107.3	-310.9	504.4	474.3	30.10	16.758	
7,100.0	7,067.9	7,043.9	6,975.2	15.7	15.7	-76.18	-53.7	-310.7	510.6	480.6	30.09	16.972	
7,200.0	7,147.2	7,120.5	7,022.9	15.7	15.7	-73.47	6.2	-310.4	517.2	487.2	30.02	17.226	
7,300.0	7,213.5	7,200.0	7,062.6	15.8	15.8	-71.19	75.0	-310.1	523.3	493.3	30.00	17.441	
7,400.0	7,264.3	7,269.1	7,088.2	15.8	15.8	-69.63	139.1	-309.9	528.3	498.1	30.16	17.516	
7,500.0	7,297.8	7,341.9	7,105.8	16.2	16.2	-68.55	209.7	-309.6	531.8	501.2	30.63	17.362	
7,600.0	7,312.7	7,414.3	7,113.4	16.8	16.6	-68.05	281.7	-309.3	533.5	502.0	31.51	16.932	
7,700.0	7,313.2	7,506.4	7,113.3	17.6	17.4	-68.01	373.7	-308.9	533.6	500.7	32.92	16.210	
7,800.0	7,312.8	7,606.4	7,112.9	18.6	18.4	-67.99	473.7	-308.5	533.7	499.0	34.69	15.383	
7,900.0	7,312.5	7,706.4	7,112.4	19.7	19.5	-67.98	573.7	-308.0	533.7	497.0	36.73	14.530	
8,000.0	7,312.1	7,806.4	7,111.9	20.9	20.7	-67.97	673.7	-307.6	533.8	494.8	39.00	13.688	
8,100.0	7,311.8	7,906.4	7,111.5	22.2	22.0	-67.96	773.7	-307.2	533.8	492.4	41.45	12.880	
8,200.0	7,311.5	8,006.4	7,111.0	23.6	23.4	-67.95	873.7	-306.8	533.9	489.8	44.05	12.119	
8,300.0	7,311.1	8,106.4	7,110.5	25.0	24.8	-67.93	973.7	-306.4	534.0	487.2	46.79	11.411	
8,400.0	7,310.8	8,206.4	7,110.0	26.5	26.4	-67.92	1,073.7	-305.9	534.0	484.4	49.64	10.759	
8,500.0	7,310.4	8,306.4	7,109.6	28.1	27.9	-67.91	1,173.7	-305.5	534.1	481.5	52.57	10.159	
8,600.0	7,310.1	8,406.4	7,109.1	29.7	29.5	-67.90	1,273.7	-305.1	534.1	478.5	55.58	9.609	
8,700.0	7,309.7	8,506.4	7,108.6	31.3	31.2	-67.89	1,373.7	-304.7	534.2	475.5	58.66	9.107	
8,800.0	7,309.4	8,606.4	7,108.2	33.0	32.9	-67.87	1,473.7	-304.3	534.2	472.4	61.79	8.646	
8,900.0	7,309.0	8,706.4	7,107.7	34.7	34.6	-67.86	1,573.7	-303.8	534.3	469.3	64.96	8.224	
9,000.0	7,308.7	8,806.4	7,107.2	36.4	36.3	-67.85	1,673.7	-303.4	534.3	466.1	68.18	7.837	
9,100.0	7,308.3	8,906.4	7,106.7	38.1	38.0	-67.84	1,773.7	-303.0	534.4	462.9	71.43	7.481	
9,200.0	7,308.0	9,006.4	7,106.3	39.9	39.8	-67.83	1,873.7	-302.6	534.4	459.7	74.71	7.153	
9,300.0	7,307.6	9,106.4	7,105.8	41.6	41.5	-67.82	1,973.7	-302.2	534.5	456.4	78.02	6.851	
9,400.0	7,307.3	9,206.4	7,105.3	43.4	43.3	-67.80	2,073.7	-301.7	534.5	453.2	81.35	6.571	
9,500.0	7,306.9	9,306.4	7,104.9	45.2	45.1	-67.79	2,173.7	-301.3	534.6	449.9	84.70	6.312	
9,600.0	7,306.6	9,406.4	7,104.4	47.0	46.9	-67.78	2,273.7	-300.9	534.6	446.5	88.06	6.071	
9,700.0	7,306.2	9,506.4	7,103.9	48.8	48.7	-67.77	2,373.7	-300.5	534.7	443.2	91.45	5.847	
9,800.0	7,305.9	9,606.4	7,103.4	50.6	50.5	-67.76	2,473.7	-300.1	534.7	439.9	94.84	5.638	
9,900.0	7,305.5	9,706.4	7,103.0	52.4	52.4	-67.74	2,573.7	-299.6	534.8	436.5	98.25	5.443	
10,000.0	7,305.2	9,806.4	7,102.5	54.3	54.2	-67.73	2,673.7	-299.2	534.8	433.1	101.67	5.260	
10,100.0	7,304.8	9,906.4	7,102.0	56.1	56.0	-67.72	2,773.7	-298.8	534.9	429.8	105.11	5.089	
10,200.0	7,304.5	10,006.4	7,101.6	57.9	57.9	-67.71	2,873.7	-298.4	534.9	426.4	108.55	4.928	

CC - Min centre to center distance or convergent point, SF - min separation factor, ES - min ellipse separation

Company:	Verdad Oil & Gas Corporation	Local Co-ordinate Reference:	Well Meehl 01N-65W-24-5C
Project:	SEC.24-T1N-R65W	TVD Reference:	WELL @ 5038.5ft (RKB - 16.5')
Reference Site:	Meehl 01N-65W-24 Pad Sec.24-T01N-R65W	MD Reference:	WELL @ 5038.5ft (RKB - 16.5')
Site Error:	0.0ft	North Reference:	True
Reference Well:	Meehl 01N-65W-24-5C	Survey Calculation Method:	Minimum Curvature
Well Error:	0.0ft	Output errors are at	2.00 sigma
Reference Wellbore	Wellbore #1	Database:	landmark
Reference Design:	Plan #1 (10-17-14)	Offset TVD Reference:	Offset Datum

Offset Design Meehl 01N-65W-24 Pad Sec.24-T01N-R65W - Meehl 01N-65W-24-2N - Wellbore #1 - Plan #1 (10-17-1													Offset Site Error:	0.0 ft
Survey Program: 0-MWD													Offset Well Error:	0.0 ft
Reference		Offset		Semi Major Axis			Distance							Warning
Measured Depth (ft)	Vertical Depth (ft)	Measured Depth (ft)	Vertical Depth (ft)	Reference (ft)	Offset (ft)	Highside Toolface (°)	Offset Wellbore Centre +N/-S (ft)	+E/-W (ft)	Between Centres (ft)	Between Ellipses (ft)	Minimum Separation (ft)	Separation Factor		
10,300.0	7,304.1	10,106.4	7,101.1	59.8	59.7	-67.70	2,973.7	-298.0	535.0	423.0	111.99	4.777		
10,400.0	7,303.8	10,206.4	7,100.6	61.6	61.6	-67.68	3,073.7	-297.5	535.0	419.6	115.45	4.634		
10,500.0	7,303.4	10,306.4	7,100.1	63.5	63.4	-67.67	3,173.7	-297.1	535.1	416.2	118.91	4.500		
10,600.0	7,303.1	10,406.4	7,099.7	65.3	65.3	-67.66	3,273.7	-296.7	535.1	412.7	122.38	4.373		
10,700.0	7,302.7	10,506.4	7,099.2	67.2	67.1	-67.65	3,373.7	-296.3	535.2	409.3	125.85	4.252		
10,800.0	7,302.4	10,606.4	7,098.7	69.1	69.0	-67.64	3,473.7	-295.9	535.2	405.9	129.33	4.138		
10,900.0	7,302.0	10,706.4	7,098.3	70.9	70.8	-67.62	3,573.7	-295.4	535.3	402.5	132.81	4.030		
11,000.0	7,301.7	10,806.4	7,097.8	72.8	72.7	-67.61	3,673.7	-295.0	535.3	399.0	136.30	3.928		
11,100.0	7,301.3	10,906.4	7,097.3	74.7	74.6	-67.60	3,773.7	-294.6	535.4	395.6	139.79	3.830		
11,200.0	7,301.0	11,006.4	7,096.9	76.5	76.5	-67.59	3,873.7	-294.2	535.4	392.1	143.29	3.737		
11,300.0	7,300.6	11,106.4	7,096.4	78.4	78.3	-67.58	3,973.7	-293.8	535.5	388.7	146.78	3.648		
11,400.0	7,300.3	11,206.4	7,095.9	80.3	80.2	-67.57	4,073.7	-293.3	535.5	385.2	150.29	3.563		
11,500.0	7,299.9	11,306.4	7,095.4	82.2	82.1	-67.55	4,173.7	-292.9	535.6	381.8	153.79	3.483		
11,600.0	7,299.6	11,406.4	7,095.0	84.0	84.0	-67.54	4,273.7	-292.5	535.6	378.3	157.30	3.405		
11,700.0	7,299.2	11,506.4	7,094.5	85.9	85.8	-67.53	4,373.7	-292.1	535.7	374.9	160.80	3.331		
11,800.0	7,298.9	11,606.4	7,094.0	87.8	87.7	-67.52	4,473.7	-291.7	535.7	371.4	164.31	3.260		
11,900.0	7,298.5	11,706.4	7,093.6	89.7	89.6	-67.51	4,573.6	-291.2	535.8	368.0	167.80	3.193		
11,910.2	7,298.5	11,716.6	7,093.5	89.8	89.8	-67.50	4,583.9	-291.2	535.8	367.7	168.09	3.188 SF		

Company:	Verdad Oil & Gas Corporation	Local Co-ordinate Reference:	Well Meehl 01N-65W-24-5C
Project:	SEC.24-T1N-R65W	TVD Reference:	WELL @ 5038.5ft (RKB - 16.5')
Reference Site:	Meehl 01N-65W-24 Pad Sec.24-T01N-R65W	MD Reference:	WELL @ 5038.5ft (RKB - 16.5')
Site Error:	0.0ft	North Reference:	True
Reference Well:	Meehl 01N-65W-24-5C	Survey Calculation Method:	Minimum Curvature
Well Error:	0.0ft	Output errors are at	2.00 sigma
Reference Wellbore	Wellbore #1	Database:	landmark
Reference Design:	Plan #1 (10-17-14)	Offset TVD Reference:	Offset Datum

Offset Design													Offset Site Error:	0.0 ft
Survey Program: 0-MWD													Offset Well Error:	0.0 ft
Reference		Offset		Semi Major Axis			Distance							Warning
Measured Depth (ft)	Vertical Depth (ft)	Measured Depth (ft)	Vertical Depth (ft)	Reference (ft)	Offset (ft)	Highside Toolface (°)	Offset Wellbore Centre +N/-S (ft)	+E/-W (ft)	Between Centres (ft)	Between Ellipses (ft)	Minimum Separation (ft)	Separation Factor		
0.0	0.0	0.0	0.0	0.0	0.0	-90.66	-0.3	-30.2	30.2					
100.0	100.0	100.0	100.0	0.1	0.1	-90.66	-0.3	-30.2	30.2	30.0	0.22	134.568		
200.0	200.0	200.0	200.0	0.3	0.3	-90.66	-0.3	-30.2	30.2	29.6	0.67	44.856		
300.0	300.0	300.0	300.0	0.6	0.6	-90.66	-0.3	-30.2	30.2	29.1	1.12	26.914		
400.0	400.0	400.0	400.0	0.8	0.8	-90.66	-0.3	-30.2	30.2	28.7	1.57	19.224		
500.0	500.0	500.0	500.0	1.0	1.0	-90.66	-0.3	-30.2	30.2	28.2	2.02	14.952		
600.0	600.0	600.0	600.0	1.2	1.2	-90.66	-0.3	-30.2	30.2	27.8	2.47	12.233		
700.0	700.0	700.0	700.0	1.5	1.5	-90.66	-0.3	-30.2	30.2	27.3	2.92	10.351		
800.0	800.0	800.0	800.0	1.7	1.7	-90.66	-0.3	-30.2	30.2	26.9	3.37	8.971		
900.0	900.0	900.0	900.0	1.9	1.9	-90.66	-0.3	-30.2	30.2	26.4	3.82	7.916		
1,000.0	1,000.0	1,000.0	1,000.0	2.1	2.1	-90.66	-0.3	-30.2	30.2	26.0	4.27	7.083		
1,100.0	1,100.0	1,100.0	1,100.0	2.4	2.4	-90.66	-0.3	-30.2	30.2	25.5	4.72	6.408		
1,200.0	1,200.0	1,200.0	1,200.0	2.6	2.6	-90.66	-0.3	-30.2	30.2	25.1	5.17	5.851		
1,300.0	1,300.0	1,300.0	1,300.0	2.8	2.8	-90.66	-0.3	-30.2	30.2	24.6	5.62	5.383		
1,400.0	1,400.0	1,400.0	1,400.0	3.0	3.0	-90.66	-0.3	-30.2	30.2	24.2	6.07	4.984		
1,500.0	1,500.0	1,500.0	1,500.0	3.3	3.3	-90.66	-0.3	-30.2	30.2	23.7	6.52	4.640		
1,600.0	1,600.0	1,600.0	1,600.0	3.5	3.5	-90.66	-0.3	-30.2	30.2	23.3	6.97	4.341 CC, ES		
1,700.0	1,700.0	1,699.5	1,699.4	3.7	3.7	-93.45	-1.9	-31.0	31.1	23.7	7.39	4.211		
1,800.0	1,800.0	1,798.7	1,798.5	3.9	3.9	-100.89	-6.4	-33.5	34.1	26.3	7.79	4.380		
1,900.0	1,900.0	1,897.4	1,896.9	4.2	4.0	-110.49	-14.0	-37.4	40.1	31.9	8.19	4.893		
2,000.0	2,000.0	1,996.2	1,995.0	4.4	4.2	-119.43	-24.1	-42.8	49.4	40.8	8.61	5.735		
2,100.0	2,100.0	2,095.5	2,093.6	4.6	4.4	95.58	-34.7	-48.4	60.0	51.0	9.00	6.674		
2,200.0	2,199.8	2,194.9	2,192.3	4.8	4.7	95.00	-45.3	-54.0	71.2	61.8	9.37	7.594		
2,300.0	2,299.5	2,294.2	2,290.8	5.0	4.9	96.93	-55.9	-59.5	82.7	72.9	9.77	8.466		
2,400.0	2,398.7	2,393.3	2,389.2	5.2	5.2	100.38	-66.4	-65.1	94.8	84.6	10.18	9.311		
2,500.0	2,497.9	2,492.3	2,487.5	5.4	5.4	103.55	-76.9	-70.7	107.4	96.8	10.62	10.113		
2,600.0	2,597.1	2,591.4	2,585.9	5.6	5.7	106.05	-87.5	-76.2	120.2	109.2	11.07	10.857		
2,700.0	2,696.3	2,690.4	2,684.2	5.8	5.9	108.07	-98.0	-81.8	133.3	121.7	11.54	11.543		
2,800.0	2,795.5	2,789.5	2,782.5	6.1	6.2	109.73	-108.6	-87.4	146.4	134.4	12.03	12.173		
2,900.0	2,894.7	2,888.5	2,880.9	6.3	6.5	111.11	-119.1	-92.9	159.7	147.1	12.52	12.751		
3,000.0	2,993.9	2,987.6	2,979.2	6.6	6.8	112.28	-129.7	-98.5	173.0	160.0	13.03	13.280		
3,100.0	3,093.0	3,086.6	3,077.5	6.9	7.1	113.28	-140.2	-104.0	186.4	172.9	13.54	13.765		
3,200.0	3,192.2	3,185.7	3,175.8	7.1	7.3	114.15	-150.7	-109.6	199.8	185.8	14.06	14.211		
3,300.0	3,291.4	3,284.7	3,274.2	7.4	7.6	114.91	-161.3	-115.2	213.3	198.7	14.59	14.620		
3,400.0	3,390.6	3,383.8	3,372.5	7.7	7.9	115.58	-171.8	-120.7	226.8	211.7	15.13	14.996		
3,500.0	3,489.8	3,482.8	3,470.8	8.0	8.2	116.17	-182.4	-126.3	240.4	224.7	15.67	15.343		
3,600.0	3,589.0	3,581.9	3,569.2	8.3	8.5	116.70	-192.9	-131.9	254.0	237.7	16.21	15.664		
3,700.0	3,688.2	3,681.7	3,668.3	8.6	8.8	117.18	-203.5	-137.5	267.5	250.8	16.76	15.960		
3,800.0	3,787.4	3,780.3	3,767.4	8.9	9.1	118.03	-212.6	-142.3	279.7	262.4	17.29	16.175		
3,900.0	3,886.5	3,883.2	3,879.0	9.2	9.3	119.40	-218.3	-145.3	289.6	271.8	17.80	16.268		
4,000.0	3,985.7	3,999.0	3,984.8	9.5	9.5	121.29	-220.5	-146.4	297.5	279.2	18.30	16.260		
4,100.0	4,084.9	4,099.1	4,084.9	9.8	9.7	123.34	-220.5	-146.4	304.4	285.6	18.77	16.217		
4,200.0	4,184.1	4,198.3	4,184.1	10.1	9.9	125.28	-220.5	-146.4	311.6	292.4	19.23	16.202		
4,300.0	4,283.3	4,297.5	4,283.3	10.4	10.0	127.13	-220.5	-146.4	318.9	299.2	19.69	16.196		
4,400.0	4,382.9	4,397.1	4,382.9	10.6	10.2	128.53	-220.5	-146.4	324.6	304.5	20.12	16.139		
4,500.0	4,482.7	4,496.9	4,482.7	10.8	10.4	129.38	-220.5	-146.4	328.3	307.8	20.52	15.999		
4,600.0	4,582.7	4,596.9	4,582.7	11.0	10.6	129.72	-220.5	-146.4	329.8	308.9	20.91	15.774		
4,700.0	4,682.7	4,696.9	4,682.7	11.2	10.8	-90.06	-220.5	-146.4	329.8	308.6	21.29	15.492		
4,800.0	4,782.7	4,796.9	4,782.7	11.4	11.0	-90.06	-220.5	-146.4	329.8	308.2	21.68	15.216		
4,900.0	4,882.7	4,896.9	4,882.7	11.6	11.2	-90.06	-220.5	-146.4	329.8	307.8	22.07	14.948		
5,000.0	4,982.7	4,996.9	4,982.7	11.8	11.4	-90.06	-220.5	-146.4	329.8	307.4	22.46	14.688		
5,100.0	5,082.7	5,096.9	5,082.7	11.9	11.6	-90.06	-220.5	-146.4	329.8	307.0	22.85	14.435		

CC - Min centre to center distance or convergent point, SF - min separation factor, ES - min ellipse separation

Company:	Verdad Oil & Gas Corporation	Local Co-ordinate Reference:	Well Meehl 01N-65W-24-5C
Project:	SEC.24-T1N-R65W	TVD Reference:	WELL @ 5038.5ft (RKB - 16.5')
Reference Site:	Meehl 01N-65W-24 Pad Sec.24-T01N-R65W	MD Reference:	WELL @ 5038.5ft (RKB - 16.5')
Site Error:	0.0ft	North Reference:	True
Reference Well:	Meehl 01N-65W-24-5C	Survey Calculation Method:	Minimum Curvature
Well Error:	0.0ft	Output errors are at	2.00 sigma
Reference Wellbore	Wellbore #1	Database:	landmark
Reference Design:	Plan #1 (10-17-14)	Offset TVD Reference:	Offset Datum

Offset Design												Offset Site Error:	0.0 ft
Survey Program: 0-MWD												Offset Well Error:	0.0 ft
Reference		Offset		Semi Major Axis			Distance						
Measured Depth (ft)	Vertical Depth (ft)	Measured Depth (ft)	Vertical Depth (ft)	Reference (ft)	Offset (ft)	Highside Toolface (°)	Offset Wellbore Centre +N/-S (ft)	+E/-W (ft)	Between Centres (ft)	Between Ellipses (ft)	Minimum Separation (ft)	Separation Factor	Warning
5,200.0	5,182.7	5,196.9	5,182.7	12.1	11.8	-90.06	-220.5	-146.4	329.8	306.6	23.24	14.190	
5,300.0	5,282.7	5,296.9	5,282.7	12.3	12.0	-90.06	-220.5	-146.4	329.8	306.2	23.64	13.952	
5,400.0	5,382.7	5,396.9	5,382.7	12.5	12.2	-90.06	-220.5	-146.4	329.8	305.8	24.04	13.721	
5,500.0	5,482.7	5,496.9	5,482.7	12.7	12.4	-90.06	-220.5	-146.4	329.8	305.4	24.44	13.496	
5,600.0	5,582.7	5,596.9	5,582.7	12.9	12.6	-90.06	-220.5	-146.4	329.8	305.0	24.84	13.277	
5,700.0	5,682.7	5,696.9	5,682.7	13.1	12.8	-90.06	-220.5	-146.4	329.8	304.6	25.25	13.065	
5,800.0	5,782.7	5,796.9	5,782.7	13.3	13.0	-90.06	-220.5	-146.4	329.8	304.2	25.65	12.859	
5,900.0	5,882.7	5,896.9	5,882.7	13.5	13.2	-90.06	-220.5	-146.4	329.8	303.8	26.06	12.658	
6,000.0	5,982.7	5,996.9	5,982.7	13.7	13.4	-90.06	-220.5	-146.4	329.8	303.4	26.47	12.463	
6,100.0	6,082.7	6,096.9	6,082.7	13.9	13.6	-90.06	-220.5	-146.4	329.8	303.0	26.88	12.273	
6,200.0	6,182.7	6,196.9	6,182.7	14.1	13.8	-90.06	-220.5	-146.4	329.8	302.6	27.29	12.088	
6,300.0	6,282.7	6,296.9	6,282.7	14.3	14.0	-90.06	-220.5	-146.4	329.8	302.1	27.70	11.909	
6,400.0	6,382.7	6,396.9	6,382.7	14.5	14.2	-90.06	-220.5	-146.4	329.8	301.7	28.11	11.734	
6,500.0	6,482.7	6,496.9	6,482.7	14.7	14.4	-90.06	-220.5	-146.4	329.8	301.3	28.53	11.563	
6,600.0	6,582.7	6,596.9	6,582.7	14.9	14.6	-90.06	-220.5	-146.4	329.8	300.9	28.94	11.397	
6,652.6	6,635.3	6,649.5	6,635.3	15.0	14.7	-89.76	-218.8	-146.4	329.8	300.7	29.15	11.315	
6,700.0	6,682.7	6,696.3	6,681.7	15.1	14.8	-88.73	-212.9	-146.4	329.9	300.6	29.31	11.254	
6,800.0	6,782.7	6,789.6	6,771.7	15.3	14.9	-84.57	-188.9	-146.3	331.4	301.8	29.58	11.202	
6,900.0	6,882.2	6,875.3	6,849.4	15.5	14.9	-79.21	-153.0	-146.2	336.5	306.8	29.74	11.315	
7,000.0	6,978.5	6,957.0	6,917.1	15.6	15.0	-74.09	-107.3	-146.0	344.3	314.5	29.75	11.573	
7,100.0	7,067.9	7,035.8	6,974.8	15.7	15.0	-69.63	-53.8	-145.7	353.4	323.9	29.58	11.947	
7,200.0	7,147.2	7,112.4	7,022.5	15.7	15.1	-65.92	6.0	-145.5	362.8	333.5	29.27	12.394	
7,300.0	7,213.5	7,187.2	7,060.3	15.8	15.2	-62.99	70.6	-145.2	371.4	342.5	28.93	12.840	
7,400.0	7,264.3	7,260.9	7,088.0	15.8	15.5	-60.84	138.7	-144.9	378.4	349.7	28.73	13.170	
7,500.0	7,297.8	7,333.7	7,105.7	16.2	15.9	-59.46	209.3	-144.6	383.2	354.4	28.89	13.268	
7,600.0	7,312.7	7,406.2	7,113.3	16.8	16.4	-58.84	281.3	-144.3	385.5	356.0	29.54	13.051	
7,700.0	7,313.2	7,497.9	7,113.3	17.6	17.1	-58.79	373.0	-144.0	385.7	354.9	30.83	12.509	
7,800.0	7,312.8	7,597.9	7,112.9	18.6	18.1	-58.78	473.0	-143.5	385.8	353.3	32.49	11.874	
7,900.0	7,312.5	7,697.9	7,112.4	19.7	19.2	-58.76	573.0	-143.1	385.8	351.4	34.39	11.219	
8,000.0	7,312.1	7,797.9	7,111.9	20.9	20.4	-58.75	673.0	-142.7	385.9	349.4	36.50	10.572	
8,100.0	7,311.8	7,897.9	7,111.5	22.2	21.8	-58.73	773.0	-142.3	386.0	347.2	38.79	9.951	
8,200.0	7,311.5	7,997.9	7,111.0	23.6	23.2	-58.72	873.0	-141.9	386.0	344.8	41.22	9.365	
8,300.0	7,311.1	8,097.9	7,110.5	25.0	24.7	-58.70	973.0	-141.4	386.1	342.3	43.78	8.820	
8,400.0	7,310.8	8,197.9	7,110.0	26.5	26.2	-58.69	1,073.0	-141.0	386.2	339.7	46.43	8.317	
8,500.0	7,310.4	8,297.9	7,109.6	28.1	27.8	-58.67	1,173.0	-140.6	386.2	337.1	49.17	7.855	
8,600.0	7,310.1	8,397.9	7,109.1	29.7	29.4	-58.65	1,273.0	-140.2	386.3	334.3	51.98	7.432	
8,700.0	7,309.7	8,497.9	7,108.6	31.3	31.0	-58.64	1,373.0	-139.8	386.4	331.5	54.85	7.044	
8,800.0	7,309.4	8,597.9	7,108.2	33.0	32.7	-58.62	1,473.0	-139.3	386.4	328.7	57.77	6.689	
8,900.0	7,309.0	8,697.9	7,107.7	34.7	34.4	-58.61	1,573.0	-138.9	386.5	325.8	60.74	6.363	
9,000.0	7,308.7	8,797.9	7,107.2	36.4	36.2	-58.59	1,673.0	-138.5	386.6	322.8	63.74	6.065	
9,100.0	7,308.3	8,897.9	7,106.7	38.1	37.9	-58.58	1,773.0	-138.1	386.6	319.9	66.78	5.790	
9,200.0	7,308.0	8,997.9	7,106.3	39.9	39.7	-58.56	1,873.0	-137.7	386.7	316.9	69.84	5.537	
9,300.0	7,307.6	9,097.9	7,105.8	41.6	41.4	-58.55	1,973.0	-137.2	386.8	313.9	72.92	5.304	
9,400.0	7,307.3	9,197.9	7,105.3	43.4	43.2	-58.53	2,073.0	-136.8	386.9	310.8	76.03	5.088	
9,500.0	7,306.9	9,297.9	7,104.9	45.2	45.0	-58.52	2,173.0	-136.4	386.9	307.8	79.16	4.888	
9,600.0	7,306.6	9,397.9	7,104.4	47.0	46.8	-58.50	2,273.0	-136.0	387.0	304.7	82.30	4.702	
9,700.0	7,306.2	9,497.9	7,103.9	48.8	48.6	-58.49	2,373.0	-135.6	387.1	301.6	85.46	4.529	
9,800.0	7,305.9	9,597.9	7,103.4	50.6	50.5	-58.47	2,473.0	-135.1	387.1	298.5	88.62	4.368	
9,900.0	7,305.5	9,697.9	7,103.0	52.4	52.3	-58.46	2,573.0	-134.7	387.2	295.4	91.81	4.218	
10,000.0	7,305.2	9,797.9	7,102.5	54.3	54.1	-58.45	2,673.0	-134.3	387.3	292.3	95.00	4.077	
10,100.0	7,304.8	9,897.9	7,102.0	56.1	56.0	-58.43	2,773.0	-133.9	387.3	289.1	98.20	3.945	
10,200.0	7,304.5	9,997.9	7,101.6	57.9	57.8	-58.42	2,873.0	-133.5	387.4	286.0	101.40	3.820	

CC - Min centre to center distance or convergent point, SF - min separation factor, ES - min ellipse separation

Company:	Verdad Oil & Gas Corporation	Local Co-ordinate Reference:	Well Meehl 01N-65W-24-5C
Project:	SEC.24-T1N-R65W	TVD Reference:	WELL @ 5038.5ft (RKB - 16.5')
Reference Site:	Meehl 01N-65W-24 Pad Sec.24-T01N-R65W	MD Reference:	WELL @ 5038.5ft (RKB - 16.5')
Site Error:	0.0ft	North Reference:	True
Reference Well:	Meehl 01N-65W-24-5C	Survey Calculation Method:	Minimum Curvature
Well Error:	0.0ft	Output errors are at	2.00 sigma
Reference Wellbore	Wellbore #1	Database:	landmark
Reference Design:	Plan #1 (10-17-14)	Offset TVD Reference:	Offset Datum

Offset Design Meehl 01N-65W-24 Pad Sec.24-T01N-R65W - Meehl 01N-65W-24-3N - Wellbore #1 - Plan #1 (10-17-1													Offset Site Error:	0.0 ft
Survey Program: 0-MWD													Offset Well Error:	0.0 ft
Reference		Offset		Semi Major Axis			Distance							Warning
Measured Depth (ft)	Vertical Depth (ft)	Measured Depth (ft)	Vertical Depth (ft)	Reference (ft)	Offset (ft)	Highside Toolface (°)	Offset Wellbore Centre +N/-S (ft)	+E/-W (ft)	Between Centres (ft)	Between Ellipses (ft)	Minimum Separation (ft)	Separation Factor		
10,300.0	7,304.1	10,097.9	7,101.1	59.8	59.7	-58.40	2,973.0	-133.0	387.5	282.9	104.62	3.704		
10,400.0	7,303.8	10,197.9	7,100.6	61.6	61.5	-58.39	3,073.0	-132.6	387.5	279.7	107.84	3.594		
10,500.0	7,303.4	10,297.9	7,100.2	63.5	63.4	-58.37	3,173.0	-132.2	387.6	276.5	111.07	3.490		
10,600.0	7,303.1	10,397.9	7,099.7	65.3	65.2	-58.36	3,273.0	-131.8	387.7	273.4	114.30	3.392		
10,700.0	7,302.7	10,497.9	7,099.2	67.2	67.1	-58.34	3,373.0	-131.4	387.7	270.2	117.54	3.299		
10,800.0	7,302.4	10,597.9	7,098.7	69.1	69.0	-58.33	3,473.0	-130.9	387.8	267.0	120.78	3.211		
10,900.0	7,302.0	10,697.9	7,098.3	70.9	70.8	-58.31	3,573.0	-130.5	387.9	263.9	124.02	3.128		
11,000.0	7,301.7	10,797.9	7,097.8	72.8	72.7	-58.30	3,673.0	-130.1	388.0	260.7	127.27	3.048		
11,100.0	7,301.3	10,897.9	7,097.3	74.7	74.6	-58.28	3,773.0	-129.7	388.0	257.5	130.53	2.973		
11,200.0	7,301.0	10,997.9	7,096.9	76.5	76.4	-58.27	3,873.0	-129.3	388.1	254.3	133.78	2.901		
11,300.0	7,300.6	11,097.9	7,096.4	78.4	78.3	-58.25	3,973.0	-128.8	388.2	251.1	137.04	2.833		
11,400.0	7,300.3	11,197.9	7,095.9	80.3	80.2	-58.24	4,073.0	-128.4	388.2	247.9	140.30	2.767		
11,500.0	7,299.9	11,297.9	7,095.4	82.2	82.1	-58.22	4,173.0	-128.0	388.3	244.7	143.56	2.705		
11,600.0	7,299.6	11,397.9	7,095.0	84.0	84.0	-58.21	4,273.0	-127.6	388.4	241.5	146.83	2.645		
11,700.0	7,299.2	11,497.9	7,094.5	85.9	85.8	-58.19	4,373.0	-127.2	388.4	238.3	150.09	2.588		
11,800.0	7,298.9	11,597.9	7,094.0	87.8	87.7	-58.18	4,473.0	-126.7	388.5	235.2	153.36	2.533		
11,900.0	7,298.5	11,697.9	7,093.6	89.7	89.6	-58.16	4,573.0	-126.3	388.6	231.9	156.63	2.481		
11,910.2	7,298.5	11,708.2	7,093.5	89.8	89.8	-58.16	4,583.2	-126.3	388.6	231.7	156.93	2.476 SF		

Company:	Verdad Oil & Gas Corporation	Local Co-ordinate Reference:	Well Meehl 01N-65W-24-5C
Project:	SEC.24-T1N-R65W	TVD Reference:	WELL @ 5038.5ft (RKB - 16.5')
Reference Site:	Meehl 01N-65W-24 Pad Sec.24-T01N-R65W	MD Reference:	WELL @ 5038.5ft (RKB - 16.5')
Site Error:	0.0ft	North Reference:	True
Reference Well:	Meehl 01N-65W-24-5C	Survey Calculation Method:	Minimum Curvature
Well Error:	0.0ft	Output errors are at	2.00 sigma
Reference Wellbore	Wellbore #1	Database:	landmark
Reference Design:	Plan #1 (10-17-14)	Offset TVD Reference:	Offset Datum

Offset Design													Offset Site Error:	0.0 ft
Survey Program: 0-MWD													Offset Well Error:	0.0 ft
Reference		Offset		Semi Major Axis			Distance							Warning
Measured Depth (ft)	Vertical Depth (ft)	Measured Depth (ft)	Vertical Depth (ft)	Reference (ft)	Offset (ft)	Highside Toolface (°)	Offset Wellbore Centre +N/-S (ft)	+E/-W (ft)	Between Centres (ft)	Between Ellipses (ft)	Minimum Separation (ft)	Separation Factor		
0.0	0.0	0.0	0.0	0.0	0.0	-89.94	0.0	-15.1	15.1	15.1	0.00	N/A		
100.0	100.0	100.0	100.0	0.1	0.1	-89.94	0.0	-15.1	15.1	14.9	0.22	67.280		
200.0	200.0	200.0	200.0	0.3	0.3	-89.94	0.0	-15.1	15.1	14.4	0.67	22.427		
300.0	300.0	300.0	300.0	0.6	0.6	-89.94	0.0	-15.1	15.1	14.0	1.12	13.456		
400.0	400.0	400.0	400.0	0.8	0.8	-89.94	0.0	-15.1	15.1	13.5	1.57	9.611		
500.0	500.0	500.0	500.0	1.0	1.0	-89.94	0.0	-15.1	15.1	13.1	2.02	7.476		
600.0	600.0	600.0	600.0	1.2	1.2	-89.94	0.0	-15.1	15.1	12.6	2.47	6.116		
700.0	700.0	700.0	700.0	1.5	1.5	-89.94	0.0	-15.1	15.1	12.2	2.92	5.175		
800.0	800.0	800.0	800.0	1.7	1.7	-89.94	0.0	-15.1	15.1	11.8	3.37	4.485		
900.0	900.0	900.0	900.0	1.9	1.9	-89.94	0.0	-15.1	15.1	11.3	3.82	3.958		
1,000.0	1,000.0	1,000.0	1,000.0	2.1	2.1	-89.94	0.0	-15.1	15.1	10.9	4.27	3.541		
1,100.0	1,100.0	1,100.0	1,100.0	2.4	2.4	-89.94	0.0	-15.1	15.1	10.4	4.72	3.204		
1,200.0	1,200.0	1,200.0	1,200.0	2.6	2.6	-89.94	0.0	-15.1	15.1	10.0	5.17	2.925		
1,300.0	1,300.0	1,300.0	1,300.0	2.8	2.8	-89.94	0.0	-15.1	15.1	9.5	5.62	2.691		
1,400.0	1,400.0	1,400.0	1,400.0	3.0	3.0	-89.94	0.0	-15.1	15.1	9.1	6.07	2.492		
1,500.0	1,500.0	1,500.0	1,500.0	3.3	3.3	-89.94	0.0	-15.1	15.1	8.6	6.52	2.320		
1,600.0	1,600.0	1,600.0	1,600.0	3.5	3.5	-89.94	0.0	-15.1	15.1	8.2	6.97	2.170		
1,700.0	1,700.0	1,700.0	1,700.0	3.7	3.7	-89.94	0.0	-15.1	15.1	7.7	7.42	2.039		
1,800.0	1,800.0	1,800.0	1,800.0	3.9	3.9	-89.94	0.0	-15.1	15.1	7.3	7.87	1.922		
1,900.0	1,900.0	1,900.0	1,900.0	4.2	4.1	-96.56	-1.7	-14.9	15.0	6.7	8.29	1.805		
1,914.7	1,914.7	1,914.7	1,914.7	4.2	4.2	-98.68	-2.3	-14.8	14.9	6.6	8.35	1.791 CC, ES, SF		
2,000.0	2,000.0	1,999.8	1,999.7	4.4	4.3	-116.02	-6.9	-14.1	15.7	7.0	8.68	1.804		
2,100.0	2,100.0	2,099.3	2,098.7	4.6	4.5	84.26	-15.4	-12.8	19.8	10.8	9.06	2.186		
2,200.0	2,199.8	2,198.8	2,197.6	4.8	4.7	75.32	-26.8	-11.0	26.6	17.1	9.43	2.817		
2,300.0	2,299.5	2,298.6	2,296.7	5.0	4.9	75.40	-38.6	-9.2	32.9	23.1	9.81	3.353		
2,400.0	2,398.7	2,398.4	2,395.7	5.2	5.1	80.20	-50.3	-7.4	38.5	28.3	10.22	3.769		
2,500.0	2,497.9	2,498.2	2,494.8	5.4	5.3	84.77	-62.1	-5.7	44.3	33.7	10.66	4.156		
2,600.0	2,597.1	2,597.9	2,593.9	5.6	5.6	88.27	-73.8	-3.9	50.3	39.2	11.12	4.523		
2,700.0	2,696.3	2,697.7	2,692.9	5.8	5.8	91.02	-85.5	-2.1	56.4	44.8	11.60	4.866		
2,800.0	2,795.5	2,797.5	2,792.0	6.1	6.1	93.22	-97.3	-0.3	62.7	50.6	12.09	5.184		
2,900.0	2,894.7	2,897.3	2,891.1	6.3	6.3	95.03	-109.0	1.5	69.0	56.4	12.60	5.476		
3,000.0	2,993.9	2,997.0	2,990.2	6.6	6.6	96.53	-120.8	3.3	75.4	62.3	13.12	5.745		
3,100.0	3,093.0	3,096.8	3,089.2	6.9	6.9	97.79	-132.5	5.1	81.8	68.2	13.65	5.992		
3,200.0	3,192.2	3,196.6	3,188.3	7.1	7.1	98.88	-144.3	6.9	88.3	74.1	14.19	6.218		
3,300.0	3,291.4	3,296.4	3,287.4	7.4	7.4	99.81	-156.0	8.7	94.7	80.0	14.74	6.426		
3,400.0	3,390.6	3,396.2	3,386.4	7.7	7.7	100.62	-167.7	10.5	101.2	85.9	15.30	6.617		
3,500.0	3,489.8	3,495.9	3,485.5	8.0	8.0	101.34	-179.5	12.3	107.8	91.9	15.86	6.793		
3,600.0	3,589.0	3,595.7	3,584.6	8.3	8.3	101.97	-191.2	14.1	114.3	97.9	16.43	6.955		
3,700.0	3,688.2	3,695.8	3,684.0	8.6	8.6	102.59	-202.9	15.8	120.8	103.8	17.01	7.105		
3,800.0	3,787.4	3,796.9	3,784.6	8.9	8.8	104.25	-212.2	17.3	126.6	109.1	17.54	7.216		
3,900.0	3,886.5	3,897.8	3,885.3	9.2	9.0	107.26	-217.9	18.1	131.6	113.5	18.06	7.288		
4,000.0	3,985.7	3,998.1	3,985.6	9.5	9.2	111.48	-220.1	18.5	136.3	117.8	18.53	7.357		
4,100.0	4,084.9	4,097.4	4,084.9	9.8	9.4	116.24	-220.2	18.5	141.5	122.5	18.96	7.464		
4,200.0	4,184.1	4,196.6	4,184.1	10.1	9.6	120.64	-220.2	18.5	147.6	128.2	19.37	7.621		
4,300.0	4,283.3	4,295.8	4,283.3	10.4	9.8	124.62	-220.2	18.5	154.3	134.5	19.76	7.809		
4,400.0	4,382.9	4,395.4	4,382.9	10.6	10.0	127.45	-220.2	18.5	159.8	139.7	20.12	7.941		
4,500.0	4,482.7	4,495.2	4,482.7	10.8	10.2	129.13	-220.2	18.5	163.4	142.9	20.49	7.976		
4,600.0	4,582.7	4,595.2	4,582.7	11.0	10.4	129.78	-220.2	18.5	164.9	144.0	20.86	7.906		
4,700.0	4,682.7	4,695.2	4,682.7	11.2	10.6	-89.99	-220.2	18.5	164.9	143.7	21.24	7.763		
4,800.0	4,782.7	4,795.2	4,782.7	11.4	10.8	-89.99	-220.2	18.5	164.9	143.3	21.63	7.624		
4,900.0	4,882.7	4,895.2	4,882.7	11.6	10.9	-89.99	-220.2	18.5	164.9	142.9	22.02	7.488		
5,000.0	4,982.7	4,995.2	4,982.7	11.8	11.1	-89.99	-220.2	18.5	164.9	142.5	22.42	7.357		

CC - Min centre to center distance or convergent point, SF - min separation factor, ES - min ellipse separation

Company:	Verdad Oil & Gas Corporation	Local Co-ordinate Reference:	Well Meehl 01N-65W-24-5C
Project:	SEC.24-T1N-R65W	TVD Reference:	WELL @ 5038.5ft (RKB - 16.5')
Reference Site:	Meehl 01N-65W-24 Pad Sec.24-T01N-R65W	MD Reference:	WELL @ 5038.5ft (RKB - 16.5')
Site Error:	0.0ft	North Reference:	True
Reference Well:	Meehl 01N-65W-24-5C	Survey Calculation Method:	Minimum Curvature
Well Error:	0.0ft	Output errors are at	2.00 sigma
Reference Wellbore	Wellbore #1	Database:	landmark
Reference Design:	Plan #1 (10-17-14)	Offset TVD Reference:	Offset Datum

Offset Design												Offset Site Error:	0.0 ft
Survey Program: 0-MWD												Offset Well Error:	0.0 ft
Reference		Offset		Semi Major Axis			Distance						
Measured Depth (ft)	Vertical Depth (ft)	Measured Depth (ft)	Vertical Depth (ft)	Reference (ft)	Offset (ft)	Highside Toolface (°)	Offset Wellbore Centre +N/-S (ft)	+E/-W (ft)	Between Centres (ft)	Between Ellipses (ft)	Minimum Separation (ft)	Separation Factor	Warning
5,100.0	5,082.7	5,095.2	5,082.7	11.9	11.3	-89.99	-220.2	18.5	164.9	142.1	22.81	7.230	
5,200.0	5,182.7	5,195.2	5,182.7	12.1	11.5	-89.99	-220.2	18.5	164.9	141.7	23.21	7.106	
5,300.0	5,282.7	5,295.2	5,282.7	12.3	11.7	-89.99	-220.2	18.5	164.9	141.3	23.61	6.986	
5,400.0	5,382.7	5,395.2	5,382.7	12.5	12.0	-89.99	-220.2	18.5	164.9	140.9	24.01	6.870	
5,500.0	5,482.7	5,495.2	5,482.7	12.7	12.2	-89.99	-220.2	18.5	164.9	140.5	24.41	6.756	
5,600.0	5,582.7	5,595.2	5,582.7	12.9	12.4	-89.99	-220.2	18.5	164.9	140.1	24.81	6.646	
5,700.0	5,682.7	5,695.2	5,682.7	13.1	12.6	-89.99	-220.2	18.5	164.9	139.7	25.22	6.540	
5,800.0	5,782.7	5,795.2	5,782.7	13.3	12.8	-89.99	-220.2	18.5	164.9	139.3	25.63	6.436	
5,900.0	5,882.7	5,895.2	5,882.7	13.5	13.0	-89.99	-220.2	18.5	164.9	138.9	26.03	6.335	
6,000.0	5,982.7	5,995.2	5,982.7	13.7	13.2	-89.99	-220.2	18.5	164.9	138.5	26.44	6.237	
6,100.0	6,082.7	6,095.2	6,082.7	13.9	13.4	-89.99	-220.2	18.5	164.9	138.1	26.85	6.141	
6,200.0	6,182.7	6,195.2	6,182.7	14.1	13.6	-89.99	-220.2	18.5	164.9	137.7	27.27	6.048	
6,300.0	6,282.7	6,295.2	6,282.7	14.3	13.8	-89.99	-220.2	18.5	164.9	137.2	27.68	5.958	
6,400.0	6,382.7	6,395.2	6,382.7	14.5	14.0	-89.99	-220.2	18.5	164.9	136.8	28.09	5.870	
6,500.0	6,482.7	6,495.2	6,482.7	14.7	14.2	-89.99	-220.2	18.5	164.9	136.4	28.51	5.785	
6,600.0	6,582.7	6,595.2	6,582.7	14.9	14.4	-89.99	-220.2	18.5	164.9	136.0	28.93	5.701	
6,638.0	6,620.7	6,633.2	6,620.7	15.0	14.5	-89.73	-219.4	18.5	164.9	135.8	29.08	5.672	
6,700.0	6,682.7	6,694.4	6,681.5	15.1	14.6	-87.35	-212.6	18.5	165.1	135.8	29.26	5.642	
6,800.0	6,782.7	6,787.6	6,771.4	15.3	14.7	-79.15	-188.6	18.6	168.2	138.8	29.41	5.719	
6,900.0	6,882.2	6,873.1	6,849.0	15.5	14.8	-68.87	-152.8	18.8	178.3	148.9	29.38	6.066	
7,000.0	6,978.5	6,954.8	6,916.6	15.6	14.8	-60.10	-107.3	19.0	192.6	163.5	29.11	6.617	
7,100.0	7,067.9	7,033.5	6,974.4	15.7	14.9	-53.24	-53.9	19.2	208.6	180.1	28.44	7.335	
7,200.0	7,147.2	7,110.0	7,022.2	15.7	15.0	-48.08	5.8	19.4	224.1	196.7	27.37	8.187	
7,300.0	7,213.5	7,184.8	7,060.0	15.8	15.2	-44.36	70.3	19.7	237.7	211.6	26.11	9.107	
7,400.0	7,264.3	7,258.5	7,087.8	15.8	15.5	-41.81	138.4	20.0	248.5	223.5	24.93	9.964	
7,500.0	7,297.8	7,331.3	7,105.5	16.2	15.9	-40.25	209.0	20.3	255.6	231.4	24.24	10.548	
7,600.0	7,312.7	7,403.7	7,113.3	16.8	16.4	-39.58	280.9	20.6	258.9	234.6	24.31	10.648	
7,700.0	7,313.2	7,495.1	7,113.3	17.6	17.1	-39.54	372.3	21.0	259.1	233.9	25.28	10.250	
7,800.0	7,312.8	7,595.1	7,112.9	18.6	18.1	-39.52	472.3	21.4	259.2	232.7	26.57	9.757	
7,900.0	7,312.5	7,695.1	7,112.4	19.7	19.2	-39.50	572.3	21.8	259.3	231.3	28.05	9.245	
8,000.0	7,312.1	7,795.1	7,111.9	20.9	20.4	-39.49	672.3	22.2	259.4	229.7	29.70	8.735	
8,100.0	7,311.8	7,895.1	7,111.5	22.2	21.8	-39.47	772.3	22.6	259.5	228.0	31.49	8.241	
8,200.0	7,311.5	7,995.1	7,111.0	23.6	23.2	-39.45	872.3	23.1	259.6	226.2	33.40	7.773	
8,300.0	7,311.1	8,095.1	7,110.5	25.0	24.6	-39.44	972.3	23.5	259.7	224.3	35.41	7.335	
8,400.0	7,310.8	8,195.1	7,110.0	26.5	26.2	-39.42	1,072.3	23.9	259.8	222.3	37.50	6.929	
8,500.0	7,310.4	8,295.1	7,109.6	28.1	27.8	-39.41	1,172.3	24.3	259.9	220.3	39.66	6.554	
8,600.0	7,310.1	8,395.1	7,109.1	29.7	29.4	-39.39	1,272.3	24.7	260.0	218.1	41.88	6.209	
8,700.0	7,309.7	8,495.1	7,108.6	31.3	31.0	-39.37	1,372.3	25.2	260.1	216.0	44.14	5.893	
8,800.0	7,309.4	8,595.1	7,108.2	33.0	32.7	-39.36	1,472.3	25.6	260.2	213.8	46.45	5.602	
8,900.0	7,309.0	8,695.1	7,107.7	34.7	34.4	-39.34	1,572.3	26.0	260.3	211.5	48.80	5.335	
9,000.0	7,308.7	8,795.1	7,107.2	36.4	36.2	-39.33	1,672.3	26.4	260.4	209.2	51.17	5.089	
9,100.0	7,308.3	8,895.1	7,106.7	38.1	37.9	-39.31	1,772.3	26.8	260.5	206.9	53.57	4.863	
9,200.0	7,308.0	8,995.1	7,106.3	39.9	39.7	-39.29	1,872.3	27.3	260.6	204.6	55.99	4.654	
9,300.0	7,307.6	9,095.1	7,105.8	41.6	41.4	-39.28	1,972.3	27.7	260.7	202.3	58.44	4.461	
9,400.0	7,307.3	9,195.1	7,105.3	43.4	43.2	-39.26	2,072.3	28.1	260.8	199.9	60.90	4.283	
9,500.0	7,306.9	9,295.1	7,104.9	45.2	45.0	-39.25	2,172.3	28.5	260.9	197.5	63.37	4.117	
9,600.0	7,306.6	9,395.1	7,104.4	47.0	46.8	-39.23	2,272.3	28.9	261.0	195.1	65.86	3.963	
9,700.0	7,306.2	9,495.1	7,103.9	48.8	48.6	-39.21	2,372.3	29.4	261.1	192.7	68.36	3.819	
9,800.0	7,305.9	9,595.1	7,103.4	50.6	50.5	-39.20	2,472.3	29.8	261.2	190.3	70.88	3.685	
9,900.0	7,305.5	9,695.1	7,103.0	52.4	52.3	-39.18	2,572.3	30.2	261.3	187.9	73.40	3.560	
10,000.0	7,305.2	9,795.1	7,102.5	54.3	54.1	-39.17	2,672.3	30.6	261.4	185.5	75.92	3.443	
10,100.0	7,304.8	9,895.1	7,102.0	56.1	56.0	-39.15	2,772.3	31.0	261.5	183.0	78.46	3.333	

CC - Min centre to center distance or convergent point, SF - min separation factor, ES - min ellipse separation

Company:	Verdad Oil & Gas Corporation	Local Co-ordinate Reference:	Well Meehl 01N-65W-24-5C
Project:	SEC.24-T1N-R65W	TVD Reference:	WELL @ 5038.5ft (RKB - 16.5')
Reference Site:	Meehl 01N-65W-24 Pad Sec.24-T01N-R65W	MD Reference:	WELL @ 5038.5ft (RKB - 16.5')
Site Error:	0.0ft	North Reference:	True
Reference Well:	Meehl 01N-65W-24-5C	Survey Calculation Method:	Minimum Curvature
Well Error:	0.0ft	Output errors are at	2.00 sigma
Reference Wellbore	Wellbore #1	Database:	landmark
Reference Design:	Plan #1 (10-17-14)	Offset TVD Reference:	Offset Datum

Offset Design Meehl 01N-65W-24 Pad Sec.24-T01N-R65W - Meehl 01N-65W-24-4N - Wellbore #1 - Plan #1 (10-17-1												Offset Site Error:	0.0 ft
Survey Program: 0-MWD												Offset Well Error:	0.0 ft
Reference		Offset		Semi Major Axis			Distance						
Measured Depth (ft)	Vertical Depth (ft)	Measured Depth (ft)	Vertical Depth (ft)	Reference (ft)	Offset (ft)	Highside Toolface (°)	Offset Wellbore Centre +N/-S (ft)	+E/-W (ft)	Between Centres (ft)	Between Ellipses (ft)	Minimum Separation (ft)	Separation Factor	Warning
10,200.0	7,304.5	9,995.1	7,101.6	57.9	57.8	-39.13	2,872.3	31.5	261.6	180.6	81.00	3.230	
10,300.0	7,304.1	10,095.1	7,101.1	59.8	59.7	-39.12	2,972.3	31.9	261.7	178.1	83.55	3.132	
10,400.0	7,303.8	10,195.1	7,100.6	61.6	61.5	-39.10	3,072.3	32.3	261.8	175.7	86.10	3.041	
10,500.0	7,303.4	10,295.1	7,100.2	63.5	63.4	-39.09	3,172.3	32.7	261.9	173.2	88.65	2.954	
10,600.0	7,303.1	10,395.1	7,099.7	65.3	65.2	-39.07	3,272.3	33.1	262.0	170.8	91.21	2.872	
10,700.0	7,302.7	10,495.1	7,099.2	67.2	67.1	-39.05	3,372.3	33.6	262.1	168.3	93.78	2.795	
10,800.0	7,302.4	10,595.1	7,098.7	69.1	69.0	-39.04	3,472.3	34.0	262.2	165.8	96.35	2.721	
10,900.0	7,302.0	10,695.1	7,098.3	70.9	70.8	-39.02	3,572.3	34.4	262.3	163.4	98.92	2.652	
11,000.0	7,301.7	10,795.1	7,097.8	72.8	72.7	-39.01	3,672.3	34.8	262.4	160.9	101.49	2.585	
11,100.0	7,301.3	10,895.1	7,097.3	74.7	74.6	-38.99	3,772.3	35.2	262.5	158.4	104.06	2.522	
11,200.0	7,301.0	10,995.1	7,096.9	76.5	76.4	-38.98	3,872.3	35.7	262.6	155.9	106.64	2.462	
11,300.0	7,300.6	11,095.1	7,096.4	78.4	78.3	-38.96	3,972.3	36.1	262.7	153.5	109.22	2.405	
11,400.0	7,300.3	11,195.1	7,095.9	80.3	80.2	-38.94	4,072.3	36.5	262.8	151.0	111.80	2.350	
11,500.0	7,299.9	11,295.1	7,095.4	82.2	82.1	-38.93	4,172.3	36.9	262.9	148.5	114.38	2.298	
11,600.0	7,299.6	11,395.1	7,095.0	84.0	84.0	-38.91	4,272.3	37.3	263.0	146.0	116.96	2.248	
11,700.0	7,299.2	11,495.1	7,094.5	85.9	85.8	-38.90	4,372.3	37.7	263.1	143.5	119.54	2.201	
11,800.0	7,298.9	11,595.1	7,094.0	87.8	87.7	-38.88	4,472.3	38.2	263.2	141.0	122.13	2.155	
11,900.0	7,298.5	11,695.1	7,093.6	89.7	89.6	-38.87	4,572.3	38.6	263.3	138.6	124.71	2.111	
11,910.2	7,298.5	11,705.4	7,093.5	89.8	89.8	-38.86	4,582.5	38.6	263.3	138.3	124.95	2.107	

Company:	Verdad Oil & Gas Corporation	Local Co-ordinate Reference:	Well Meehl 01N-65W-24-5C
Project:	SEC.24-T1N-R65W	TVD Reference:	WELL @ 5038.5ft (RKB - 16.5')
Reference Site:	Meehl 01N-65W-24 Pad Sec.24-T01N-R65W	MD Reference:	WELL @ 5038.5ft (RKB - 16.5')
Site Error:	0.0ft	North Reference:	True
Reference Well:	Meehl 01N-65W-24-5C	Survey Calculation Method:	Minimum Curvature
Well Error:	0.0ft	Output errors are at	2.00 sigma
Reference Wellbore	Wellbore #1	Database:	landmark
Reference Design:	Plan #1 (10-17-14)	Offset TVD Reference:	Offset Datum

Offset Design												Offset Site Error:	0.0 ft
Survey Program: 0-MWD												Offset Well Error:	0.0 ft
Reference		Offset		Semi Major Axis			Distance						
Measured Depth (ft)	Vertical Depth (ft)	Measured Depth (ft)	Vertical Depth (ft)	Reference (ft)	Offset (ft)	Highside Toolface (°)	Offset Wellbore Centre +N/-S (ft)	+E/-W (ft)	Between Centres (ft)	Between Ellipses (ft)	Minimum Separation (ft)	Separation Factor	Warning
0.0	0.0	0.0	0.0	0.0	0.0	90.18	0.0	14.8	14.8	14.8	0.00	N/A	
100.0	100.0	100.0	100.0	0.1	0.1	90.18	0.0	14.8	14.8	14.6	0.22	66.034	
200.0	200.0	200.0	200.0	0.3	0.3	90.18	0.0	14.8	14.8	14.2	0.67	22.011	
300.0	300.0	300.0	300.0	0.6	0.6	90.18	0.0	14.8	14.8	13.7	1.12	13.207	
400.0	400.0	400.0	400.0	0.8	0.8	90.18	0.0	14.8	14.8	13.3	1.57	9.433	
500.0	500.0	500.0	500.0	1.0	1.0	90.18	0.0	14.8	14.8	12.8	2.02	7.337	
600.0	600.0	600.0	600.0	1.2	1.2	90.18	0.0	14.8	14.8	12.4	2.47	6.003	
700.0	700.0	700.0	700.0	1.5	1.5	90.18	0.0	14.8	14.8	11.9	2.92	5.080	
800.0	800.0	800.0	800.0	1.7	1.7	90.18	0.0	14.8	14.8	11.5	3.37	4.402	
900.0	900.0	900.0	900.0	1.9	1.9	90.18	0.0	14.8	14.8	11.0	3.82	3.884	
1,000.0	1,000.0	1,000.0	1,000.0	2.1	2.1	90.18	0.0	14.8	14.8	10.6	4.27	3.475	
1,100.0	1,100.0	1,100.0	1,100.0	2.4	2.4	90.18	0.0	14.8	14.8	10.1	4.72	3.144	
1,200.0	1,200.0	1,200.0	1,200.0	2.6	2.6	90.18	0.0	14.8	14.8	9.7	5.17	2.871	
1,300.0	1,300.0	1,300.0	1,300.0	2.8	2.8	90.18	0.0	14.8	14.8	9.2	5.62	2.641	
1,400.0	1,400.0	1,400.0	1,400.0	3.0	3.0	90.18	0.0	14.8	14.8	8.8	6.07	2.446 CC, ES	
1,500.0	1,500.0	1,499.5	1,499.5	3.3	3.2	93.50	-1.0	16.3	16.3	9.8	6.50	2.513	
1,600.0	1,600.0	1,598.8	1,598.7	3.5	3.4	100.56	-3.8	20.6	21.0	14.1	6.91	3.040	
1,700.0	1,700.0	1,697.6	1,697.1	3.7	3.6	107.11	-8.5	27.7	29.2	21.8	7.33	3.983	
1,800.0	1,800.0	1,796.2	1,795.0	3.9	3.8	111.77	-15.0	37.5	40.7	33.0	7.75	5.252	
1,900.0	1,900.0	1,895.4	1,893.4	4.2	4.1	114.51	-21.9	48.0	53.2	45.0	8.19	6.495	
2,000.0	2,000.0	1,994.6	1,991.8	4.4	4.3	116.20	-28.8	58.5	65.7	57.1	8.63	7.614	
2,100.0	2,100.0	2,094.0	2,090.4	4.6	4.6	-23.27	-35.7	69.0	76.7	67.7	8.99	8.528	
2,200.0	2,199.8	2,193.7	2,189.2	4.8	4.8	-23.65	-42.6	79.5	84.4	75.1	9.36	9.016	
2,300.0	2,299.5	2,293.5	2,288.3	5.0	5.1	-24.89	-49.6	90.0	89.0	79.3	9.74	9.138	
2,400.0	2,398.7	2,393.5	2,387.4	5.2	5.4	-26.95	-56.5	100.6	90.8	80.6	10.14	8.952	
2,500.0	2,497.9	2,493.4	2,486.6	5.4	5.7	-29.16	-63.5	111.1	91.9	81.4	10.56	8.703	
2,600.0	2,597.1	2,593.3	2,585.7	5.6	6.0	-31.31	-70.4	121.7	93.2	82.2	11.00	8.476	
2,700.0	2,696.3	2,693.3	2,684.8	5.8	6.3	-33.40	-77.3	132.2	94.7	83.2	11.45	8.266	
2,800.0	2,795.5	2,793.2	2,784.0	6.1	6.6	-35.42	-84.3	142.8	96.2	84.3	11.92	8.073	
2,900.0	2,894.7	2,893.1	2,883.1	6.3	6.9	-37.38	-91.2	153.3	97.9	85.5	12.40	7.895	
3,000.0	2,993.9	2,993.1	2,982.2	6.6	7.2	-39.27	-98.2	163.9	99.7	86.8	12.90	7.730	
3,100.0	3,093.0	3,093.0	3,081.3	6.9	7.5	-41.09	-105.1	174.4	101.6	88.2	13.41	7.578	
3,200.0	3,192.2	3,192.9	3,180.5	7.1	7.8	-42.84	-112.1	185.0	103.6	89.6	13.93	7.436	
3,300.0	3,291.4	3,292.8	3,279.6	7.4	8.1	-44.52	-119.0	195.5	105.7	91.2	14.46	7.305	
3,400.0	3,390.6	3,392.8	3,378.7	7.7	8.4	-46.14	-126.0	206.1	107.8	92.8	15.01	7.184	
3,500.0	3,489.8	3,492.7	3,477.9	8.0	8.7	-47.70	-132.9	216.6	110.1	94.5	15.57	7.071	
3,600.0	3,589.0	3,592.6	3,577.0	8.3	9.0	-49.19	-139.9	227.2	112.4	96.3	16.14	6.966	
3,700.0	3,688.2	3,692.6	3,676.1	8.6	9.4	-50.62	-146.8	237.7	114.8	98.1	16.71	6.869	
3,800.0	3,787.4	3,792.5	3,775.3	8.9	9.7	-51.99	-153.8	248.3	117.3	100.0	17.30	6.779	
3,900.0	3,886.5	3,892.4	3,874.4	9.2	10.0	-53.30	-160.7	258.8	119.8	101.9	17.90	6.695	
4,000.0	3,985.7	3,992.4	3,973.5	9.5	10.3	-54.56	-167.7	269.4	122.4	103.9	18.50	6.617	
4,100.0	4,084.9	4,092.3	4,072.6	9.8	10.6	-55.76	-174.6	279.9	125.1	106.0	19.11	6.545	
4,200.0	4,184.1	4,192.2	4,171.8	10.1	11.0	-56.92	-181.6	290.5	127.8	108.1	19.72	6.478	
4,300.0	4,283.3	4,292.2	4,270.9	10.4	11.3	-57.90	-188.5	301.0	130.7	110.4	20.33	6.432	
4,400.0	4,382.9	4,392.0	4,370.0	10.6	11.6	-57.79	-195.4	311.6	135.3	114.5	20.83	6.498	
4,500.0	4,482.7	4,491.8	4,468.9	10.8	11.9	-56.54	-202.4	322.1	141.8	120.6	21.24	6.677	
4,600.0	4,582.7	4,592.5	4,568.9	11.0	12.2	-54.35	-209.3	332.6	150.3	128.7	21.56	6.969	
4,700.0	4,682.7	4,696.6	4,672.4	11.2	12.5	88.06	-214.9	341.1	158.1	136.3	21.85	7.236	
4,800.0	4,782.7	4,801.2	4,776.9	11.4	12.7	89.36	-218.4	346.4	163.1	141.0	22.17	7.360	
4,900.0	4,882.7	4,906.2	4,881.8	11.6	12.9	89.87	-219.8	348.6	165.2	142.7	22.52	7.335	
5,000.0	4,982.7	5,007.1	4,982.7	11.8	13.0	89.88	-219.8	348.6	165.2	142.3	22.90	7.216	
5,100.0	5,082.7	5,107.1	5,082.7	11.9	13.2	89.88	-219.8	348.6	165.2	142.0	23.28	7.098	

CC - Min centre to center distance or convergent point, SF - min separation factor, ES - min ellipse separation

Company:	Verdad Oil & Gas Corporation	Local Co-ordinate Reference:	Well Meehl 01N-65W-24-5C
Project:	SEC.24-T1N-R65W	TVD Reference:	WELL @ 5038.5ft (RKB - 16.5')
Reference Site:	Meehl 01N-65W-24 Pad Sec.24-T01N-R65W	MD Reference:	WELL @ 5038.5ft (RKB - 16.5')
Site Error:	0.0ft	North Reference:	True
Reference Well:	Meehl 01N-65W-24-5C	Survey Calculation Method:	Minimum Curvature
Well Error:	0.0ft	Output errors are at	2.00 sigma
Reference Wellbore	Wellbore #1	Database:	landmark
Reference Design:	Plan #1 (10-17-14)	Offset TVD Reference:	Offset Datum

Offset Design												Offset Site Error:	0.0 ft
Survey Program: 0-MWD												Offset Well Error:	0.0 ft
Reference		Offset		Semi Major Axis			Distance						
Measured Depth (ft)	Vertical Depth (ft)	Measured Depth (ft)	Vertical Depth (ft)	Reference (ft)	Offset (ft)	Highside Toolface (°)	Offset Wellbore Centre +N/-S (ft)	+E/-W (ft)	Between Centres (ft)	Between Ellipses (ft)	Minimum Separation (ft)	Separation Factor	Warning
5,200.0	5,182.7	5,207.1	5,182.7	12.1	13.4	89.88	-219.8	348.6	165.2	141.6	23.66	6.984	
5,300.0	5,282.7	5,307.1	5,282.7	12.3	13.5	89.88	-219.8	348.6	165.2	141.2	24.05	6.872	
5,400.0	5,382.7	5,407.1	5,382.7	12.5	13.7	89.88	-219.8	348.6	165.2	140.8	24.43	6.763	
5,500.0	5,482.7	5,507.1	5,482.7	12.7	13.9	89.88	-219.8	348.6	165.2	140.4	24.82	6.657	
5,600.0	5,582.7	5,607.1	5,582.7	12.9	14.1	89.88	-219.8	348.6	165.2	140.0	25.21	6.554	
5,700.0	5,682.7	5,707.1	5,682.7	13.1	14.2	89.88	-219.8	348.6	165.2	139.6	25.61	6.453	
5,800.0	5,782.7	5,807.1	5,782.7	13.3	14.4	89.88	-219.8	348.6	165.2	139.2	26.00	6.355	
5,900.0	5,882.7	5,907.1	5,882.7	13.5	14.6	89.88	-219.8	348.6	165.2	138.8	26.40	6.260	
6,000.0	5,982.7	6,007.1	5,982.7	13.7	14.8	89.88	-219.8	348.6	165.2	138.4	26.79	6.167	
6,100.0	6,082.7	6,107.1	6,082.7	13.9	15.0	89.88	-219.8	348.6	165.2	138.0	27.19	6.076	
6,200.0	6,182.7	6,207.1	6,182.7	14.1	15.2	89.88	-219.8	348.6	165.2	137.6	27.60	5.988	
6,300.0	6,282.7	6,307.1	6,282.7	14.3	15.3	89.88	-219.8	348.6	165.2	137.2	28.00	5.902	
6,400.0	6,382.7	6,407.1	6,382.7	14.5	15.5	89.88	-219.8	348.6	165.2	136.8	28.40	5.818	
6,500.0	6,482.7	6,507.1	6,482.7	14.7	15.7	89.88	-219.8	348.6	165.2	136.4	28.81	5.736	
6,600.0	6,582.7	6,607.1	6,582.7	14.9	15.9	89.88	-219.8	348.6	165.2	136.0	29.21	5.656	
6,626.8	6,609.5	6,633.8	6,609.4	15.0	15.9	89.79	-219.6	348.6	165.2	135.9	29.33	5.635	
6,700.0	6,682.7	6,706.0	6,681.2	15.1	16.1	87.26	-212.3	348.7	165.5	135.8	29.70	5.571	
6,800.0	6,782.7	6,800.0	6,771.9	15.3	16.2	79.01	-188.1	348.8	168.8	138.5	30.34	5.563	
6,900.0	6,882.2	6,884.3	6,848.3	15.5	16.2	68.47	-152.9	348.9	179.1	148.2	30.90	5.797	
7,000.0	6,978.5	6,965.8	6,915.9	15.6	16.2	59.79	-107.5	349.1	193.6	162.6	30.93	6.259	
7,100.0	7,067.9	7,044.4	6,973.7	15.7	16.2	53.02	-54.3	349.3	209.5	179.3	30.28	6.921	
7,200.0	7,147.2	7,120.8	7,021.5	15.7	16.2	47.93	5.2	349.6	225.0	195.9	29.06	7.742	
7,300.0	7,213.5	7,200.0	7,061.4	15.8	16.2	44.13	73.6	349.9	238.5	211.0	27.57	8.651	
7,400.0	7,264.3	7,269.1	7,087.4	15.8	16.3	41.76	137.6	350.1	249.0	222.8	26.28	9.478	
7,500.0	7,297.8	7,341.9	7,105.3	16.2	16.5	40.25	208.1	350.4	256.0	230.5	25.57	10.013	
7,600.0	7,312.7	7,414.3	7,113.2	16.8	16.9	39.62	280.0	350.7	259.1	233.3	25.85	10.022	
7,700.0	7,313.2	7,505.3	7,113.3	17.6	17.7	39.58	371.0	351.1	259.3	232.3	26.98	9.611	
7,800.0	7,312.8	7,605.3	7,112.9	18.6	18.6	39.56	471.0	351.5	259.4	231.0	28.33	9.155	
7,900.0	7,312.5	7,705.3	7,112.4	19.7	19.7	39.54	571.0	352.0	259.5	229.6	29.87	8.688	
8,000.0	7,312.1	7,805.3	7,111.9	20.9	20.9	39.52	671.0	352.4	259.6	228.0	31.55	8.227	
8,100.0	7,311.8	7,905.3	7,111.5	22.2	22.2	39.50	771.0	352.8	259.7	226.3	33.37	7.782	
8,200.0	7,311.5	8,005.3	7,111.0	23.6	23.6	39.49	871.0	353.2	259.7	224.4	35.29	7.360	
8,300.0	7,311.1	8,105.3	7,110.5	25.0	25.1	39.47	971.0	353.6	259.8	222.5	37.31	6.964	
8,400.0	7,310.8	8,205.3	7,110.0	26.5	26.6	39.45	1,070.9	354.0	259.9	220.5	39.41	6.596	
8,500.0	7,310.4	8,305.3	7,109.6	28.1	28.2	39.43	1,170.9	354.5	260.0	218.4	41.57	6.255	
8,600.0	7,310.1	8,405.3	7,109.1	29.7	29.8	39.41	1,270.9	354.9	260.1	216.3	43.78	5.941	
8,700.0	7,309.7	8,505.3	7,108.6	31.3	31.4	39.39	1,370.9	355.3	260.2	214.1	46.05	5.650	
8,800.0	7,309.4	8,605.3	7,108.2	33.0	33.1	39.38	1,470.9	355.7	260.3	211.9	48.35	5.383	
8,900.0	7,309.0	8,705.3	7,107.7	34.7	34.7	39.36	1,570.9	356.1	260.4	209.7	50.69	5.136	
9,000.0	7,308.7	8,805.3	7,107.2	36.4	36.5	39.34	1,670.9	356.6	260.5	207.4	53.06	4.909	
9,100.0	7,308.3	8,905.3	7,106.7	38.1	38.2	39.32	1,770.9	357.0	260.6	205.1	55.46	4.698	
9,200.0	7,308.0	9,005.3	7,106.3	39.9	39.9	39.30	1,870.9	357.4	260.6	202.8	57.88	4.503	
9,300.0	7,307.6	9,105.3	7,105.8	41.6	41.7	39.29	1,970.9	357.8	260.7	200.4	60.31	4.323	
9,400.0	7,307.3	9,205.3	7,105.3	43.4	43.5	39.27	2,070.9	358.2	260.8	198.1	62.77	4.155	
9,500.0	7,306.9	9,305.3	7,104.9	45.2	45.3	39.25	2,170.9	358.7	260.9	195.7	65.24	3.999	
9,600.0	7,306.6	9,405.3	7,104.4	47.0	47.1	39.23	2,270.9	359.1	261.0	193.3	67.72	3.854	
9,700.0	7,306.2	9,505.3	7,103.9	48.8	48.9	39.21	2,370.9	359.5	261.1	190.9	70.22	3.718	
9,800.0	7,305.9	9,605.3	7,103.4	50.6	50.7	39.19	2,470.9	359.9	261.2	188.5	72.72	3.592	
9,900.0	7,305.5	9,705.3	7,103.0	52.4	52.5	39.18	2,570.9	360.3	261.3	186.0	75.24	3.473	
10,000.0	7,305.2	9,805.3	7,102.5	54.3	54.3	39.16	2,670.9	360.7	261.4	183.6	77.76	3.361	
10,100.0	7,304.8	9,905.3	7,102.0	56.1	56.1	39.14	2,770.9	361.2	261.5	181.2	80.29	3.256	
10,200.0	7,304.5	10,005.3	7,101.6	57.9	58.0	39.12	2,870.9	361.6	261.5	178.7	82.82	3.158	

CC - Min centre to center distance or convergent point, SF - min separation factor, ES - min ellipse separation

Company:	Verdad Oil & Gas Corporation	Local Co-ordinate Reference:	Well Meehl 01N-65W-24-5C
Project:	SEC.24-T1N-R65W	TVD Reference:	WELL @ 5038.5ft (RKB - 16.5')
Reference Site:	Meehl 01N-65W-24 Pad Sec.24-T01N-R65W	MD Reference:	WELL @ 5038.5ft (RKB - 16.5')
Site Error:	0.0ft	North Reference:	True
Reference Well:	Meehl 01N-65W-24-5C	Survey Calculation Method:	Minimum Curvature
Well Error:	0.0ft	Output errors are at	2.00 sigma
Reference Wellbore	Wellbore #1	Database:	landmark
Reference Design:	Plan #1 (10-17-14)	Offset TVD Reference:	Offset Datum

Offset Design Meehl 01N-65W-24 Pad Sec.24-T01N-R65W - Meehl 01N-65W-24-6N - Wellbore #1 - Plan #1 (10-17-1												Offset Site Error:	0.0 ft
Survey Program: 0-MWD												Offset Well Error:	0.0 ft
Reference		Offset		Semi Major Axis			Distance						
Measured Depth (ft)	Vertical Depth (ft)	Measured Depth (ft)	Vertical Depth (ft)	Reference (ft)	Offset (ft)	Highside Toolface (°)	Offset Wellbore Centre +N/-S (ft)	+E/-W (ft)	Between Centres (ft)	Between Ellipses (ft)	Minimum Separation (ft)	Separation Factor	Warning
10,300.0	7,304.1	10,105.3	7,101.1	59.8	59.8	39.10	2,970.9	362.0	261.6	176.3	85.37	3.065	
10,400.0	7,303.8	10,205.3	7,100.6	61.6	61.7	39.09	3,070.9	362.4	261.7	173.8	87.91	2.977	
10,500.0	7,303.4	10,305.3	7,100.2	63.5	63.5	39.07	3,170.9	362.8	261.8	171.4	90.46	2.894	
10,600.0	7,303.1	10,405.3	7,099.7	65.3	65.4	39.05	3,270.9	363.3	261.9	168.9	93.02	2.816	
10,700.0	7,302.7	10,505.3	7,099.2	67.2	67.2	39.03	3,370.9	363.7	262.0	166.4	95.58	2.741	
10,800.0	7,302.4	10,605.3	7,098.7	69.1	69.1	39.01	3,470.9	364.1	262.1	164.0	98.14	2.671	
10,900.0	7,302.0	10,705.3	7,098.3	70.9	71.0	39.00	3,570.9	364.5	262.2	161.5	100.70	2.604	
11,000.0	7,301.7	10,805.3	7,097.8	72.8	72.8	38.98	3,670.9	364.9	262.3	159.0	103.27	2.540	
11,100.0	7,301.3	10,905.3	7,097.3	74.7	74.7	38.96	3,770.9	365.4	262.4	156.5	105.84	2.479	
11,200.0	7,301.0	11,005.3	7,096.9	76.5	76.6	38.94	3,870.9	365.8	262.5	154.0	108.41	2.421	
11,300.0	7,300.6	11,105.3	7,096.4	78.4	78.4	38.93	3,970.9	366.2	262.5	151.6	110.98	2.366	
11,400.0	7,300.3	11,205.3	7,095.9	80.3	80.3	38.91	4,070.9	366.6	262.6	149.1	113.56	2.313	
11,500.0	7,299.9	11,305.3	7,095.4	82.2	82.2	38.89	4,170.9	367.0	262.7	146.6	116.14	2.262	
11,600.0	7,299.6	11,405.3	7,095.0	84.0	84.1	38.87	4,270.9	367.4	262.8	144.1	118.71	2.214	
11,700.0	7,299.2	11,505.3	7,094.5	85.9	85.9	38.85	4,370.9	367.9	262.9	141.6	121.29	2.168	
11,800.0	7,298.9	11,605.3	7,094.0	87.8	87.8	38.84	4,470.9	368.3	263.0	139.1	123.87	2.123	
11,900.0	7,298.5	11,705.3	7,093.6	89.7	89.7	38.82	4,570.9	368.7	263.1	136.6	126.45	2.081	
11,910.2	7,298.5	11,715.6	7,093.5	89.8	89.9	38.82	4,581.1	368.7	263.1	136.4	126.68	2.077 SF	

Company:	Verdad Oil & Gas Corporation	Local Co-ordinate Reference:	Well Meehl 01N-65W-24-5C
Project:	SEC.24-T1N-R65W	TVD Reference:	WELL @ 5038.5ft (RKB - 16.5')
Reference Site:	Meehl 01N-65W-24 Pad Sec.24-T01N-R65W	MD Reference:	WELL @ 5038.5ft (RKB - 16.5')
Site Error:	0.0ft	North Reference:	True
Reference Well:	Meehl 01N-65W-24-5C	Survey Calculation Method:	Minimum Curvature
Well Error:	0.0ft	Output errors are at	2.00 sigma
Reference Wellbore	Wellbore #1	Database:	landmark
Reference Design:	Plan #1 (10-17-14)	Offset TVD Reference:	Offset Datum

Offset Design													Offset Site Error:	0.0 ft
Survey Program: 0-MWD													Offset Well Error:	0.0 ft
Reference		Offset		Semi Major Axis			Distance							Warning
Measured Depth (ft)	Vertical Depth (ft)	Measured Depth (ft)	Vertical Depth (ft)	Reference (ft)	Offset (ft)	Highside Toolface (°)	Offset Wellbore Centre +N/-S (ft)	+E/-W (ft)	Between Centres (ft)	Between Ellipses (ft)	Minimum Separation (ft)	Separation Factor		
0.0	0.0	0.0	0.0	0.0	0.0	90.02	0.0	30.0	30.0					
100.0	100.0	100.0	100.0	0.1	0.1	90.02	0.0	30.0	30.0	29.7	0.22	133.313		
200.0	200.0	200.0	200.0	0.3	0.3	90.02	0.0	30.0	30.0	29.3	0.67	44.438		
300.0	300.0	300.0	300.0	0.6	0.6	90.02	0.0	30.0	30.0	28.8	1.12	26.663		
400.0	400.0	400.0	400.0	0.8	0.8	90.02	0.0	30.0	30.0	28.4	1.57	19.045		
500.0	500.0	500.0	500.0	1.0	1.0	90.02	0.0	30.0	30.0	27.9	2.02	14.813		
600.0	600.0	600.0	600.0	1.2	1.2	90.02	0.0	30.0	30.0	27.5	2.47	12.119		
700.0	700.0	700.0	700.0	1.5	1.5	90.02	0.0	30.0	30.0	27.0	2.92	10.255		
800.0	800.0	800.0	800.0	1.7	1.7	90.02	0.0	30.0	30.0	26.6	3.37	8.888		
900.0	900.0	900.0	900.0	1.9	1.9	90.02	0.0	30.0	30.0	26.1	3.82	7.842		
1,000.0	1,000.0	1,000.0	1,000.0	2.1	2.1	90.02	0.0	30.0	30.0	25.7	4.27	7.016		
1,100.0	1,100.0	1,100.0	1,100.0	2.4	2.4	90.02	0.0	30.0	30.0	25.2	4.72	6.348		
1,200.0	1,200.0	1,200.0	1,200.0	2.6	2.6	90.02	0.0	30.0	30.0	24.8	5.17	5.796 CC, ES		
1,300.0	1,300.0	1,299.0	1,299.0	2.8	2.8	91.31	-0.7	31.5	31.5	25.9	5.60	5.636		
1,400.0	1,400.0	1,397.8	1,397.6	3.0	3.0	94.48	-2.8	36.2	36.4	30.4	6.01	6.048		
1,500.0	1,500.0	1,496.1	1,495.6	3.3	3.2	98.21	-6.3	43.9	44.6	38.1	6.43	6.925		
1,600.0	1,600.0	1,593.7	1,592.5	3.5	3.4	101.57	-11.2	54.6	56.2	49.3	6.86	8.187		
1,700.0	1,700.0	1,690.4	1,688.0	3.7	3.7	104.26	-17.3	68.1	71.3	64.0	7.31	9.755		
1,800.0	1,800.0	1,788.6	1,784.7	3.9	3.9	106.24	-24.4	83.7	88.5	80.7	7.76	11.400		
1,900.0	1,900.0	1,887.1	1,881.7	4.2	4.2	107.59	-31.5	99.3	105.8	97.6	8.23	12.860		
2,000.0	2,000.0	1,985.5	1,978.6	4.4	4.6	108.55	-38.6	115.0	123.1	114.4	8.70	14.153		
2,100.0	2,100.0	2,084.3	2,075.8	4.6	4.9	-31.14	-45.7	130.7	139.0	130.0	9.01	15.436		
2,200.0	2,199.8	2,183.4	2,173.4	4.8	5.2	-31.41	-52.8	146.4	152.0	142.6	9.40	16.165		
2,300.0	2,299.5	2,282.9	2,271.4	5.0	5.6	-32.30	-60.0	162.2	162.0	152.2	9.80	16.526		
2,400.0	2,398.7	2,382.5	2,369.5	5.2	5.9	-33.73	-67.2	178.1	169.3	159.1	10.22	16.567		
2,500.0	2,497.9	2,482.2	2,467.6	5.4	6.3	-35.23	-74.4	193.9	176.2	165.5	10.67	16.516		
2,600.0	2,597.1	2,581.8	2,565.8	5.6	6.7	-36.62	-81.6	209.7	183.1	172.0	11.13	16.458		
2,700.0	2,696.3	2,681.5	2,663.9	5.8	7.0	-37.91	-88.8	225.6	190.2	178.6	11.60	16.396		
2,800.0	2,795.5	2,781.1	2,762.0	6.1	7.4	-39.10	-95.9	241.4	197.3	185.2	12.08	16.329		
2,900.0	2,894.7	2,880.8	2,860.2	6.3	7.8	-40.21	-103.1	257.3	204.5	191.9	12.58	16.258		
3,000.0	2,993.9	2,980.5	2,958.3	6.6	8.2	-41.25	-110.3	273.1	211.8	198.7	13.08	16.184		
3,100.0	3,093.0	3,080.1	3,056.4	6.9	8.6	-42.21	-117.5	288.9	219.1	205.5	13.60	16.109		
3,200.0	3,192.2	3,179.8	3,154.6	7.1	8.9	-43.12	-124.7	304.8	226.5	212.4	14.13	16.032		
3,300.0	3,291.4	3,279.5	3,252.7	7.4	9.3	-43.96	-131.9	320.6	234.0	219.3	14.66	15.955		
3,400.0	3,390.6	3,379.1	3,350.8	7.7	9.7	-44.76	-139.1	336.5	241.5	226.3	15.21	15.878		
3,500.0	3,489.8	3,478.8	3,449.0	8.0	10.1	-45.50	-146.3	352.3	249.0	233.3	15.76	15.802		
3,600.0	3,589.0	3,578.5	3,547.1	8.3	10.5	-46.21	-153.4	368.1	256.6	240.3	16.32	15.726		
3,700.0	3,688.2	3,678.1	3,645.2	8.6	10.9	-46.87	-160.6	384.0	264.2	247.3	16.88	15.652		
3,800.0	3,787.4	3,777.8	3,743.4	8.9	11.3	-47.49	-167.8	399.8	271.9	254.4	17.45	15.579		
3,900.0	3,886.5	3,877.5	3,841.5	9.2	11.7	-48.08	-175.0	415.7	279.5	261.5	18.03	15.507		
4,000.0	3,985.7	3,977.1	3,939.6	9.5	12.1	-48.64	-182.2	431.5	287.3	268.7	18.61	15.438		
4,100.0	4,084.9	4,076.8	4,037.8	9.8	12.5	-49.17	-189.4	447.3	295.0	275.8	19.19	15.370		
4,200.0	4,184.1	4,176.4	4,135.9	10.1	12.9	-49.67	-196.6	463.2	302.8	283.0	19.78	15.304		
4,300.0	4,283.3	4,279.9	4,237.8	10.4	13.2	-50.18	-203.9	479.4	310.6	290.2	20.36	15.252		
4,400.0	4,382.9	4,390.6	4,347.4	10.6	13.6	-50.54	-210.4	493.7	317.6	296.8	20.85	15.232		
4,500.0	4,482.7	4,501.8	4,457.9	10.8	13.8	-50.66	-215.2	504.2	323.3	302.1	21.28	15.195		
4,600.0	4,582.7	4,613.1	4,569.1	11.0	14.0	-50.55	-218.2	510.8	327.8	306.1	21.65	15.139		
4,700.0	4,682.7	4,724.8	4,680.7	11.2	14.2	89.86	-219.4	513.5	330.1	308.1	22.03	14.982		
4,800.0	4,782.7	4,826.8	4,782.7	11.4	14.4	89.86	-219.4	513.6	330.2	307.8	22.41	14.735		
4,900.0	4,882.7	4,926.8	4,882.7	11.6	14.5	89.86	-219.4	513.6	330.2	307.4	22.78	14.494		
5,000.0	4,982.7	5,026.8	4,982.7	11.8	14.7	89.86	-219.4	513.6	330.2	307.0	23.16	14.258		
5,100.0	5,082.7	5,126.8	5,082.7	11.9	14.8	89.86	-219.4	513.6	330.2	306.6	23.53	14.029		

CC - Min centre to center distance or convergent point, SF - min separation factor, ES - min ellipse separation

Company:	Verdad Oil & Gas Corporation	Local Co-ordinate Reference:	Well Meehl 01N-65W-24-5C
Project:	SEC.24-T1N-R65W	TVD Reference:	WELL @ 5038.5ft (RKB - 16.5')
Reference Site:	Meehl 01N-65W-24 Pad Sec.24-T01N-R65W	MD Reference:	WELL @ 5038.5ft (RKB - 16.5')
Site Error:	0.0ft	North Reference:	True
Reference Well:	Meehl 01N-65W-24-5C	Survey Calculation Method:	Minimum Curvature
Well Error:	0.0ft	Output errors are at	2.00 sigma
Reference Wellbore	Wellbore #1	Database:	landmark
Reference Design:	Plan #1 (10-17-14)	Offset TVD Reference:	Offset Datum

Offset Design													Offset Site Error:	0.0 ft
Survey Program: 0-MWD													Offset Well Error:	0.0 ft
Reference		Offset		Semi Major Axis			Distance							Warning
Measured Depth (ft)	Vertical Depth (ft)	Measured Depth (ft)	Vertical Depth (ft)	Reference (ft)	Offset (ft)	Highside Toolface (°)	Offset Wellbore Centre +N/-S (ft)	+E/-W (ft)	Between Centres (ft)	Between Ellipses (ft)	Minimum Separation (ft)	Separation Factor		
5,200.0	5,182.7	5,226.8	5,182.7	12.1	15.0	89.86	-219.4	513.6	330.2	306.3	23.91	13.806		
5,300.0	5,282.7	5,326.8	5,282.7	12.3	15.1	89.86	-219.4	513.6	330.2	305.9	24.30	13.588		
5,400.0	5,382.7	5,426.8	5,382.7	12.5	15.3	89.86	-219.4	513.6	330.2	305.5	24.68	13.376		
5,500.0	5,482.7	5,526.8	5,482.7	12.7	15.4	89.86	-219.4	513.6	330.2	305.1	25.07	13.169		
5,600.0	5,582.7	5,626.8	5,582.7	12.9	15.6	89.86	-219.4	513.6	330.2	304.7	25.46	12.968		
5,700.0	5,682.7	5,726.8	5,682.7	13.1	15.8	89.86	-219.4	513.6	330.2	304.3	25.85	12.772		
5,800.0	5,782.7	5,826.8	5,782.7	13.3	15.9	89.86	-219.4	513.6	330.2	303.9	26.24	12.580		
5,900.0	5,882.7	5,926.8	5,882.7	13.5	16.1	89.86	-219.4	513.6	330.2	303.5	26.64	12.394		
6,000.0	5,982.7	6,026.8	5,982.7	13.7	16.3	89.86	-219.4	513.6	330.2	303.1	27.04	12.212		
6,100.0	6,082.7	6,126.8	6,082.7	13.9	16.4	89.86	-219.4	513.6	330.2	302.7	27.43	12.035		
6,200.0	6,182.7	6,226.8	6,182.7	14.1	16.6	89.86	-219.4	513.6	330.2	302.3	27.83	11.862		
6,300.0	6,282.7	6,326.8	6,282.7	14.3	16.8	89.86	-219.4	513.6	330.2	301.9	28.24	11.693		
6,400.0	6,382.7	6,426.8	6,382.7	14.5	17.0	89.86	-219.4	513.6	330.2	301.5	28.64	11.529		
6,500.0	6,482.7	6,526.8	6,482.7	14.7	17.1	89.86	-219.4	513.6	330.2	301.1	29.04	11.368		
6,600.0	6,582.7	6,626.8	6,582.7	14.9	17.3	89.86	-219.4	513.6	330.2	300.7	29.45	11.212		
6,619.9	6,602.6	6,646.7	6,602.6	14.9	17.3	89.85	-219.3	513.6	330.2	300.6	29.53	11.181		
6,700.0	6,682.7	6,725.6	6,681.0	15.1	17.5	88.56	-211.9	513.6	330.3	300.4	29.89	11.050		
6,800.0	6,782.7	6,818.3	6,770.5	15.3	17.5	84.46	-188.1	513.7	332.1	301.7	30.41	10.920		
6,900.0	6,882.2	6,903.5	6,847.9	15.5	17.6	78.67	-152.7	513.8	337.5	306.6	30.91	10.920		
7,000.0	6,978.5	6,984.9	6,915.5	15.6	17.6	73.61	-107.4	514.0	345.5	314.3	31.17	11.085		
7,100.0	7,067.9	7,063.4	6,973.2	15.7	17.6	69.23	-54.3	514.3	354.7	323.6	31.10	11.406		
7,200.0	7,147.2	7,139.8	7,021.1	15.7	17.6	65.60	5.1	514.5	364.0	333.3	30.74	11.840		
7,300.0	7,213.5	7,214.5	7,059.1	15.8	17.6	62.75	69.3	514.8	372.5	342.2	30.27	12.307		
7,400.0	7,264.3	7,288.1	7,087.1	15.8	17.7	60.68	137.3	515.1	379.3	349.3	29.99	12.648		
7,500.0	7,297.8	7,360.9	7,105.2	16.2	17.8	59.38	207.7	515.4	383.8	353.7	30.13	12.739		
7,600.0	7,312.7	7,433.2	7,113.2	16.8	18.1	58.84	279.6	515.7	385.8	354.9	30.94	12.470		
7,700.0	7,313.2	7,523.9	7,113.3	17.6	18.6	58.81	370.3	516.0	385.9	353.6	32.34	11.933		
7,800.0	7,312.8	7,623.9	7,112.9	18.6	19.4	58.79	470.3	516.5	386.0	351.9	34.02	11.345		
7,900.0	7,312.5	7,723.9	7,112.4	19.7	20.4	58.78	570.3	516.9	386.0	350.1	35.94	10.742		
8,000.0	7,312.1	7,823.9	7,111.9	20.9	21.6	58.76	670.3	517.3	386.1	348.0	38.05	10.146		
8,100.0	7,311.8	7,923.9	7,111.5	22.2	22.9	58.75	770.3	517.7	386.1	345.8	40.34	9.572		
8,200.0	7,311.5	8,023.9	7,111.0	23.6	24.2	58.73	870.3	518.1	386.2	343.4	42.76	9.030		
8,300.0	7,311.1	8,123.9	7,110.5	25.0	25.6	58.71	970.3	518.5	386.2	340.9	45.31	8.525		
8,400.0	7,310.8	8,223.9	7,110.0	26.5	27.1	58.70	1,070.3	519.0	386.3	338.3	47.95	8.056		
8,500.0	7,310.4	8,323.9	7,109.6	28.1	28.6	58.68	1,170.3	519.4	386.4	335.7	50.68	7.623		
8,600.0	7,310.1	8,423.9	7,109.1	29.7	30.2	58.67	1,270.3	519.8	386.4	332.9	53.48	7.225		
8,700.0	7,309.7	8,523.9	7,108.6	31.3	31.8	58.65	1,370.3	520.2	386.5	330.1	56.34	6.860		
8,800.0	7,309.4	8,623.9	7,108.2	33.0	33.4	58.63	1,470.3	520.6	386.5	327.3	59.25	6.524		
8,900.0	7,309.0	8,723.9	7,107.7	34.7	35.1	58.62	1,570.2	521.1	386.6	324.4	62.20	6.215		
9,000.0	7,308.7	8,823.9	7,107.2	36.4	36.8	58.60	1,670.2	521.5	386.6	321.5	65.19	5.931		
9,100.0	7,308.3	8,923.9	7,106.7	38.1	38.5	58.59	1,770.2	521.9	386.7	318.5	68.22	5.669		
9,200.0	7,308.0	9,023.9	7,106.3	39.9	40.2	58.57	1,870.2	522.3	386.8	315.5	71.27	5.427		
9,300.0	7,307.6	9,123.9	7,105.8	41.6	42.0	58.55	1,970.2	522.7	386.8	312.5	74.34	5.203		
9,400.0	7,307.3	9,223.9	7,105.3	43.4	43.8	58.54	2,070.2	523.1	386.9	309.4	77.44	4.996		
9,500.0	7,306.9	9,323.9	7,104.9	45.2	45.5	58.52	2,170.2	523.6	386.9	306.4	80.56	4.803		
9,600.0	7,306.6	9,423.9	7,104.4	47.0	47.3	58.51	2,270.2	524.0	387.0	303.3	83.69	4.624		
9,700.0	7,306.2	9,523.9	7,103.9	48.8	49.1	58.49	2,370.2	524.4	387.1	300.2	86.84	4.457		
9,800.0	7,305.9	9,623.9	7,103.5	50.6	50.9	58.47	2,470.2	524.8	387.1	297.1	90.00	4.301		
9,900.0	7,305.5	9,723.9	7,103.0	52.4	52.7	58.46	2,570.2	525.2	387.2	294.0	93.18	4.155		
10,000.0	7,305.2	9,823.9	7,102.5	54.3	54.5	58.44	2,670.2	525.7	387.2	290.9	96.36	4.019		
10,100.0	7,304.8	9,923.9	7,102.0	56.1	56.4	58.43	2,770.2	526.1	387.3	287.7	99.55	3.890		
10,200.0	7,304.5	10,023.9	7,101.6	57.9	58.2	58.41	2,870.2	526.5	387.3	284.6	102.76	3.770		

CC - Min centre to center distance or convergent point, SF - min separation factor, ES - min ellipse separation

Company:	Verdad Oil & Gas Corporation	Local Co-ordinate Reference:	Well Meehl 01N-65W-24-5C
Project:	SEC.24-T1N-R65W	TVD Reference:	WELL @ 5038.5ft (RKB - 16.5')
Reference Site:	Meehl 01N-65W-24 Pad Sec.24-T01N-R65W	MD Reference:	WELL @ 5038.5ft (RKB - 16.5')
Site Error:	0.0ft	North Reference:	True
Reference Well:	Meehl 01N-65W-24-5C	Survey Calculation Method:	Minimum Curvature
Well Error:	0.0ft	Output errors are at	2.00 sigma
Reference Wellbore	Wellbore #1	Database:	landmark
Reference Design:	Plan #1 (10-17-14)	Offset TVD Reference:	Offset Datum

Offset Design Meehl 01N-65W-24 Pad Sec.24-T01N-R65W - Meehl 01N-65W-24-7N - Wellbore #1 - Plan #1 (10-17-1												Offset Site Error:	0.0 ft
Survey Program: 0-MWD												Offset Well Error:	0.0 ft
Reference		Offset		Semi Major Axis			Distance						
Measured Depth (ft)	Vertical Depth (ft)	Measured Depth (ft)	Vertical Depth (ft)	Reference (ft)	Offset (ft)	Highside Toolface (°)	Offset Wellbore Centre +N/-S (ft)	+E/-W (ft)	Between Centres (ft)	Between Ellipses (ft)	Minimum Separation (ft)	Separation Factor	Warning
10,300.0	7,304.1	10,123.9	7,101.1	59.8	60.0	58.39	2,970.2	526.9	387.4	281.4	105.96	3.656	
10,400.0	7,303.8	10,223.9	7,100.6	61.6	61.9	58.38	3,070.2	527.3	387.5	278.3	109.18	3.549	
10,500.0	7,303.4	10,323.9	7,100.2	63.5	63.7	58.36	3,170.2	527.8	387.5	275.1	112.40	3.448	
10,600.0	7,303.1	10,423.9	7,099.7	65.3	65.5	58.35	3,270.2	528.2	387.6	271.9	115.63	3.352	
10,700.0	7,302.7	10,523.9	7,099.2	67.2	67.4	58.33	3,370.2	528.6	387.6	268.8	118.86	3.261	
10,800.0	7,302.4	10,623.9	7,098.7	69.1	69.2	58.31	3,470.2	529.0	387.7	265.6	122.10	3.175	
10,900.0	7,302.0	10,723.9	7,098.3	70.9	71.1	58.30	3,570.2	529.4	387.8	262.4	125.34	3.094	
11,000.0	7,301.7	10,823.9	7,097.8	72.8	73.0	58.28	3,670.2	529.8	387.8	259.2	128.59	3.016	
11,100.0	7,301.3	10,923.9	7,097.3	74.7	74.8	58.27	3,770.2	530.3	387.9	256.0	131.84	2.942	
11,200.0	7,301.0	11,023.9	7,096.9	76.5	76.7	58.25	3,870.2	530.7	387.9	252.8	135.09	2.872	
11,300.0	7,300.6	11,123.9	7,096.4	78.4	78.6	58.24	3,970.2	531.1	388.0	249.6	138.34	2.805	
11,400.0	7,300.3	11,223.9	7,095.9	80.3	80.4	58.22	4,070.2	531.5	388.0	246.4	141.60	2.740	
11,500.0	7,299.9	11,323.9	7,095.4	82.2	82.3	58.20	4,170.2	531.9	388.1	243.2	144.86	2.679	
11,600.0	7,299.6	11,423.9	7,095.0	84.0	84.2	58.19	4,270.2	532.4	388.2	240.0	148.12	2.621	
11,700.0	7,299.2	11,523.9	7,094.5	85.9	86.1	58.17	4,370.2	532.8	388.2	236.8	151.39	2.564	
11,800.0	7,298.9	11,623.9	7,094.0	87.8	87.9	58.16	4,470.2	533.2	388.3	233.6	154.65	2.511	
11,900.0	7,298.5	11,723.9	7,093.6	89.7	89.8	58.14	4,570.2	533.6	388.3	230.4	157.92	2.459	
11,910.2	7,298.5	11,734.2	7,093.5	89.8	90.0	58.14	4,580.4	533.7	388.3	230.1	158.22	2.455 SF	

Company:	Verdad Oil & Gas Corporation	Local Co-ordinate Reference:	Well Meehl 01N-65W-24-5C
Project:	SEC.24-T1N-R65W	TVD Reference:	WELL @ 5038.5ft (RKB - 16.5')
Reference Site:	Meehl 01N-65W-24 Pad Sec.24-T01N-R65W	MD Reference:	WELL @ 5038.5ft (RKB - 16.5')
Site Error:	0.0ft	North Reference:	True
Reference Well:	Meehl 01N-65W-24-5C	Survey Calculation Method:	Minimum Curvature
Well Error:	0.0ft	Output errors are at	2.00 sigma
Reference Wellbore	Wellbore #1	Database:	landmark
Reference Design:	Plan #1 (10-17-14)	Offset TVD Reference:	Offset Datum

Offset Design													Offset Site Error:	0.0 ft
Survey Program: 0-MWD													Offset Well Error:	0.0 ft
Reference		Offset		Semi Major Axis			Distance							Warning
Measured Depth (ft)	Vertical Depth (ft)	Measured Depth (ft)	Vertical Depth (ft)	Reference (ft)	Offset (ft)	Highside Toolface (°)	Offset Wellbore Centre +N/-S (ft)	+E/-W (ft)	Between Centres (ft)	Between Ellipses (ft)	Minimum Separation (ft)	Separation Factor		
0.0	0.0	0.0	0.0	0.0	0.0	90.03	0.0	44.8	44.8					
100.0	100.0	100.0	100.0	0.1	0.1	90.03	0.0	44.8	44.8	44.6	0.22	199.347		
200.0	200.0	200.0	200.0	0.3	0.3	90.03	0.0	44.8	44.8	44.1	0.67	66.449		
300.0	300.0	300.0	300.0	0.6	0.6	90.03	0.0	44.8	44.8	43.7	1.12	39.869		
400.0	400.0	400.0	400.0	0.8	0.8	90.03	0.0	44.8	44.8	43.2	1.57	28.478		
500.0	500.0	500.0	500.0	1.0	1.0	90.03	0.0	44.8	44.8	42.8	2.02	22.150		
600.0	600.0	600.0	600.0	1.2	1.2	90.03	0.0	44.8	44.8	42.3	2.47	18.122 CC, ES		
700.0	700.0	698.5	698.5	1.5	1.4	90.71	-0.6	46.4	46.4	43.5	2.90	16.002		
800.0	800.0	796.8	796.6	1.7	1.6	92.49	-2.2	51.2	51.4	48.0	3.32	15.445		
900.0	900.0	894.6	894.1	1.9	1.9	94.80	-5.0	59.1	59.6	55.9	3.76	15.863		
1,000.0	1,000.0	991.7	990.5	2.1	2.1	97.12	-8.8	70.1	71.3	67.1	4.20	16.956		
1,100.0	1,100.0	1,087.9	1,085.6	2.4	2.4	99.18	-13.6	84.0	86.3	81.6	4.66	18.511		
1,200.0	1,200.0	1,183.1	1,179.1	2.6	2.7	100.87	-19.3	100.7	104.7	99.5	5.14	20.368		
1,300.0	1,300.0	1,279.7	1,273.5	2.8	3.1	102.23	-26.0	119.9	125.6	119.9	5.64	22.270		
1,400.0	1,400.0	1,377.4	1,369.0	3.0	3.5	103.22	-32.8	139.6	146.7	140.5	6.15	23.854		
1,500.0	1,500.0	1,475.1	1,464.5	3.3	3.9	103.96	-39.6	159.2	167.8	161.2	6.67	25.155		
1,600.0	1,600.0	1,572.9	1,560.0	3.5	4.3	104.53	-46.3	178.8	189.0	181.8	7.20	26.236		
1,700.0	1,700.0	1,670.6	1,655.5	3.7	4.7	104.99	-53.1	198.4	210.2	202.4	7.74	27.146		
1,800.0	1,800.0	1,768.3	1,750.9	3.9	5.2	105.37	-59.9	218.0	231.4	223.1	8.29	27.920		
1,900.0	1,900.0	1,866.0	1,846.4	4.2	5.6	105.68	-66.7	237.7	252.6	243.7	8.84	28.584		
2,000.0	2,000.0	1,963.7	1,941.9	4.4	6.0	105.94	-73.5	257.3	273.8	264.4	9.39	29.161		
2,100.0	2,100.0	2,061.7	2,037.7	4.6	6.5	-34.01	-80.3	276.9	293.6	284.3	9.24	31.761		
2,200.0	2,199.8	2,160.3	2,134.0	4.8	6.9	-34.16	-87.1	296.7	310.5	300.9	9.68	32.092		
2,300.0	2,299.5	2,259.2	2,230.7	5.0	7.4	-34.65	-94.0	316.6	324.7	314.6	10.12	32.093		
2,400.0	2,398.7	2,358.4	2,327.6	5.2	7.8	-35.49	-100.9	336.5	336.2	325.6	10.57	31.806		
2,500.0	2,497.9	2,457.6	2,424.5	5.4	8.3	-36.43	-107.8	356.4	347.2	336.2	11.04	31.444		
2,600.0	2,597.1	2,556.9	2,521.5	5.6	8.8	-37.31	-114.7	376.4	358.3	346.8	11.53	31.088		
2,700.0	2,696.3	2,656.1	2,618.5	5.8	9.2	-38.14	-121.5	396.3	369.5	357.4	12.02	30.740		
2,800.0	2,795.5	2,755.3	2,715.5	6.1	9.7	-38.91	-128.4	416.2	380.7	368.2	12.52	30.400		
2,900.0	2,894.7	2,854.6	2,812.4	6.3	10.1	-39.65	-135.3	436.1	392.0	379.0	13.04	30.070		
3,000.0	2,993.9	2,953.8	2,909.4	6.6	10.6	-40.34	-142.2	456.0	403.4	389.8	13.56	29.750		
3,100.0	3,093.0	3,053.0	3,006.4	6.9	11.1	-41.00	-149.1	476.0	414.8	400.7	14.09	29.440		
3,200.0	3,192.2	3,152.3	3,103.4	7.1	11.5	-41.62	-156.0	495.9	426.3	411.6	14.63	29.141		
3,300.0	3,291.4	3,251.5	3,200.3	7.4	12.0	-42.20	-162.9	515.8	437.8	422.6	15.17	28.853		
3,400.0	3,390.6	3,350.8	3,297.3	7.7	12.5	-42.76	-169.8	535.7	449.3	433.6	15.72	28.576		
3,500.0	3,489.8	3,450.0	3,394.3	8.0	12.9	-43.29	-176.6	555.7	460.9	444.6	16.28	28.309		
3,600.0	3,589.0	3,549.2	3,491.2	8.3	13.4	-43.79	-183.5	575.6	472.6	455.7	16.85	28.053		
3,700.0	3,688.2	3,648.5	3,588.2	8.6	13.8	-44.27	-190.4	595.5	484.2	466.8	17.41	27.806		
3,800.0	3,787.4	3,747.7	3,685.2	8.9	14.3	-44.73	-197.3	615.4	495.9	478.0	17.99	27.570		
3,900.0	3,886.5	3,846.1	3,801.3	9.2	14.7	-45.31	-204.8	637.2	505.9	487.3	18.57	27.238		
4,000.0	3,985.7	3,946.5	3,920.2	9.5	15.1	-46.02	-210.9	654.6	511.9	492.8	19.15	26.734		
4,100.0	4,084.9	4,107.0	4,040.1	9.8	15.4	-46.86	-215.3	667.3	513.9	494.2	19.72	26.057		
4,200.0	4,184.1	4,227.4	4,160.2	10.1	15.6	-47.86	-218.0	675.3	512.0	491.7	20.30	25.226		
4,300.0	4,283.3	4,347.3	4,280.0	10.4	15.7	-48.95	-219.1	678.4	506.4	485.6	20.85	24.291		
4,400.0	4,382.9	4,450.2	4,382.9	10.6	15.9	-49.69	-219.1	678.5	500.4	479.1	21.29	23.503		
4,500.0	4,482.7	4,550.1	4,482.7	10.8	16.0	-50.15	-219.1	678.5	496.6	475.0	21.68	22.906		
4,600.0	4,582.7	4,650.0	4,582.7	11.0	16.1	-50.33	-219.1	678.5	495.1	473.1	22.03	22.477		
4,645.3	4,628.0	4,695.3	4,628.0	11.1	16.2	-50.35	-219.1	678.5	495.0	472.8	22.19	22.307		
4,700.0	4,682.7	4,750.0	4,682.7	11.2	16.3	89.88	-219.1	678.5	495.1	472.7	22.40	22.098		
4,800.0	4,782.7	4,850.0	4,782.7	11.4	16.4	89.88	-219.1	678.5	495.1	472.3	22.77	21.745		
4,900.0	4,882.7	4,950.0	4,882.7	11.6	16.5	89.88	-219.1	678.5	495.1	472.0	23.14	21.400		
5,000.0	4,982.7	5,050.0	4,982.7	11.8	16.7	89.88	-219.1	678.5	495.1	471.6	23.51	21.063		

CC - Min centre to center distance or convergent point, SF - min separation factor, ES - min ellipse separation

Company:	Verdad Oil & Gas Corporation	Local Co-ordinate Reference:	Well Meehl 01N-65W-24-5C
Project:	SEC.24-T1N-R65W	TVD Reference:	WELL @ 5038.5ft (RKB - 16.5')
Reference Site:	Meehl 01N-65W-24 Pad Sec.24-T01N-R65W	MD Reference:	WELL @ 5038.5ft (RKB - 16.5')
Site Error:	0.0ft	North Reference:	True
Reference Well:	Meehl 01N-65W-24-5C	Survey Calculation Method:	Minimum Curvature
Well Error:	0.0ft	Output errors are at	2.00 sigma
Reference Wellbore	Wellbore #1	Database:	landmark
Reference Design:	Plan #1 (10-17-14)	Offset TVD Reference:	Offset Datum

Offset Design												Offset Site Error:	0.0 ft
Survey Program: 0-MWD												Offset Well Error:	0.0 ft
Reference		Offset		Semi Major Axis			Distance						
Measured Depth (ft)	Vertical Depth (ft)	Measured Depth (ft)	Vertical Depth (ft)	Reference (ft)	Offset (ft)	Highside Toolface (°)	Offset Wellbore Centre +N/-S (ft)	+E/-W (ft)	Between Centres (ft)	Between Ellipses (ft)	Minimum Separation (ft)	Separation Factor	Warning
5,100.0	5,082.7	5,150.0	5,082.7	11.9	16.8	89.88	-219.1	678.5	495.1	471.2	23.88	20.734	
5,200.0	5,182.7	5,250.0	5,182.7	12.1	16.9	89.88	-219.1	678.5	495.1	470.9	24.25	20.413	
5,300.0	5,282.7	5,350.0	5,282.7	12.3	17.1	89.88	-219.1	678.5	495.1	470.5	24.63	20.100	
5,400.0	5,382.7	5,450.0	5,382.7	12.5	17.2	89.88	-219.1	678.5	495.1	470.1	25.01	19.795	
5,500.0	5,482.7	5,550.0	5,482.7	12.7	17.4	89.88	-219.1	678.5	495.1	469.7	25.39	19.497	
5,600.0	5,582.7	5,650.0	5,582.7	12.9	17.5	89.88	-219.1	678.5	495.1	469.3	25.78	19.206	
5,700.0	5,682.7	5,750.0	5,682.7	13.1	17.6	89.88	-219.1	678.5	495.1	468.9	26.17	18.922	
5,800.0	5,782.7	5,850.0	5,782.7	13.3	17.8	89.88	-219.1	678.5	495.1	468.6	26.55	18.645	
5,900.0	5,882.7	5,950.0	5,882.7	13.5	17.9	89.88	-219.1	678.5	495.1	468.2	26.94	18.375	
6,000.0	5,982.7	6,050.0	5,982.7	13.7	18.1	89.88	-219.1	678.5	495.1	467.8	27.34	18.111	
6,100.0	6,082.7	6,150.0	6,082.7	13.9	18.3	89.88	-219.1	678.5	495.1	467.4	27.73	17.854	
6,200.0	6,182.7	6,250.0	6,182.7	14.1	18.4	89.88	-219.1	678.5	495.1	467.0	28.13	17.603	
6,300.0	6,282.7	6,350.0	6,282.7	14.3	18.6	89.88	-219.1	678.5	495.1	466.6	28.52	17.358	
6,400.0	6,382.7	6,450.0	6,382.7	14.5	18.7	89.88	-219.1	678.5	495.1	466.2	28.92	17.119	
6,500.0	6,482.7	6,550.0	6,482.7	14.7	18.9	89.88	-219.1	678.5	495.1	465.8	29.32	16.885	
6,600.0	6,582.7	6,650.0	6,582.7	14.9	19.0	89.88	-219.1	678.5	495.1	465.4	29.72	16.657	
6,614.0	6,596.7	6,664.0	6,596.7	14.9	19.1	89.87	-219.1	678.5	495.1	465.3	29.78	16.626	
6,700.0	6,682.7	6,748.6	6,680.9	15.1	19.2	89.01	-211.6	678.5	495.2	465.1	30.15	16.425	
6,800.0	6,782.7	6,841.2	6,770.2	15.3	19.3	86.28	-188.0	678.6	496.4	465.8	30.62	16.211	
6,900.0	6,882.2	6,926.3	6,847.5	15.5	19.3	82.29	-152.6	678.8	500.2	469.1	31.07	16.095	
7,000.0	6,978.5	7,007.6	6,915.1	15.6	19.3	78.82	-107.5	679.0	505.6	474.2	31.36	16.121	
7,100.0	7,067.9	7,086.1	6,972.8	15.7	19.3	75.73	-54.4	679.2	512.0	480.5	31.44	16.281	
7,200.0	7,147.2	7,162.4	7,020.7	15.7	19.3	73.10	4.8	679.5	518.5	487.1	31.37	16.528	
7,300.0	7,213.5	7,237.1	7,058.8	15.8	19.3	70.99	69.0	679.7	524.4	493.2	31.27	16.769	
7,400.0	7,264.3	7,310.6	7,086.9	15.8	19.4	69.43	136.9	680.0	529.2	497.9	31.37	16.870	
7,500.0	7,297.8	7,383.4	7,105.0	16.2	19.5	68.44	207.3	680.3	532.5	500.6	31.84	16.721	
7,600.0	7,312.7	7,455.7	7,113.2	16.8	19.7	68.03	279.2	680.6	533.9	501.0	32.83	16.261	
7,700.0	7,313.2	7,546.1	7,113.3	17.6	20.1	68.02	369.6	681.0	533.9	499.6	34.31	15.560	
7,800.0	7,312.8	7,646.1	7,112.9	18.6	20.7	68.01	469.6	681.4	533.9	497.9	36.09	14.794	
7,900.0	7,312.5	7,746.1	7,112.4	19.7	21.6	67.99	569.6	681.9	534.0	495.9	38.13	14.006	
8,000.0	7,312.1	7,846.1	7,111.9	20.9	22.6	67.98	669.6	682.3	534.0	493.7	40.38	13.225	
8,100.0	7,311.8	7,946.1	7,111.5	22.2	23.8	67.97	769.5	682.7	534.1	491.3	42.81	12.474	
8,200.0	7,311.5	8,046.1	7,111.0	23.6	25.1	67.96	869.5	683.1	534.1	488.7	45.40	11.764	
8,300.0	7,311.1	8,146.1	7,110.5	25.0	26.4	67.94	969.5	683.5	534.2	486.1	48.12	11.101	
8,400.0	7,310.8	8,246.1	7,110.0	26.5	27.9	67.93	1,069.5	684.0	534.2	483.3	50.95	10.486	
8,500.0	7,310.4	8,346.1	7,109.6	28.1	29.3	67.92	1,169.5	684.4	534.3	480.4	53.86	9.919	
8,600.0	7,310.1	8,446.1	7,109.1	29.7	30.9	67.91	1,269.5	684.8	534.3	477.5	56.85	9.398	
8,700.0	7,309.7	8,546.1	7,108.6	31.3	32.4	67.90	1,369.5	685.2	534.4	474.4	59.91	8.919	
8,800.0	7,309.4	8,646.1	7,108.2	33.0	34.1	67.88	1,469.5	685.7	534.4	471.4	63.02	8.479	
8,900.0	7,309.0	8,746.1	7,107.7	34.7	35.7	67.87	1,569.5	686.1	534.4	468.3	66.18	8.075	
9,000.0	7,308.7	8,846.1	7,107.2	36.4	37.4	67.86	1,669.5	686.5	534.5	465.1	69.39	7.703	
9,100.0	7,308.3	8,946.1	7,106.7	38.1	39.0	67.85	1,769.5	686.9	534.5	461.9	72.62	7.360	
9,200.0	7,308.0	9,046.1	7,106.3	39.9	40.8	67.83	1,869.5	687.4	534.6	458.7	75.89	7.044	
9,300.0	7,307.6	9,146.1	7,105.8	41.6	42.5	67.82	1,969.5	687.8	534.6	455.4	79.19	6.751	
9,400.0	7,307.3	9,246.1	7,105.3	43.4	44.2	67.81	2,069.5	688.2	534.7	452.2	82.50	6.480	
9,500.0	7,306.9	9,346.1	7,104.9	45.2	46.0	67.80	2,169.5	688.6	534.7	448.9	85.84	6.229	
9,600.0	7,306.6	9,446.1	7,104.4	47.0	47.7	67.79	2,269.5	689.1	534.8	445.6	89.20	5.995	
9,700.0	7,306.2	9,546.1	7,103.9	48.8	49.5	67.77	2,369.5	689.5	534.8	442.2	92.58	5.777	
9,800.0	7,305.9	9,646.1	7,103.5	50.6	51.3	67.76	2,469.5	689.9	534.8	438.9	95.96	5.573	
9,900.0	7,305.5	9,746.1	7,103.0	52.4	53.1	67.75	2,569.5	690.3	534.9	435.5	99.37	5.383	
10,000.0	7,305.2	9,846.1	7,102.5	54.3	54.9	67.74	2,669.5	690.8	534.9	432.2	102.78	5.205	
10,100.0	7,304.8	9,946.1	7,102.0	56.1	56.7	67.73	2,769.5	691.2	535.0	428.8	106.20	5.037	

CC - Min centre to center distance or convergent point, SF - min separation factor, ES - min ellipse separation

Company:	Verdad Oil & Gas Corporation	Local Co-ordinate Reference:	Well Meehl 01N-65W-24-5C
Project:	SEC.24-T1N-R65W	TVD Reference:	WELL @ 5038.5ft (RKB - 16.5')
Reference Site:	Meehl 01N-65W-24 Pad Sec.24-T01N-R65W	MD Reference:	WELL @ 5038.5ft (RKB - 16.5')
Site Error:	0.0ft	North Reference:	True
Reference Well:	Meehl 01N-65W-24-5C	Survey Calculation Method:	Minimum Curvature
Well Error:	0.0ft	Output errors are at	2.00 sigma
Reference Wellbore	Wellbore #1	Database:	landmark
Reference Design:	Plan #1 (10-17-14)	Offset TVD Reference:	Offset Datum

Offset Design Meehl 01N-65W-24 Pad Sec.24-T01N-R65W - Meehl 01N-65W-24-8N - Wellbore #1 - Plan #1 (10-17-1												Offset Site Error:	0.0 ft
Survey Program: 0-MWD												Offset Well Error:	0.0 ft
Reference		Offset		Semi Major Axis			Distance						
Measured Depth (ft)	Vertical Depth (ft)	Measured Depth (ft)	Vertical Depth (ft)	Reference (ft)	Offset (ft)	Highside Toolface (°)	Offset Wellbore Centre +N/-S (ft)	+E/-W (ft)	Between Centres (ft)	Between Ellipses (ft)	Minimum Separation (ft)	Separation Factor	Warning
10,200.0	7,304.5	10,046.1	7,101.6	57.9	58.5	67.71	2,869.5	691.6	535.0	425.4	109.64	4.880	
10,300.0	7,304.1	10,146.1	7,101.1	59.8	60.4	67.70	2,969.5	692.0	535.1	422.0	113.08	4.732	
10,400.0	7,303.8	10,246.1	7,100.6	61.6	62.2	67.69	3,069.5	692.4	535.1	418.6	116.53	4.592	
10,500.0	7,303.4	10,346.1	7,100.2	63.5	64.0	67.68	3,169.5	692.9	535.2	415.2	119.99	4.460	
10,600.0	7,303.1	10,446.1	7,099.7	65.3	65.9	67.66	3,269.5	693.3	535.2	411.8	123.45	4.335	
10,700.0	7,302.7	10,546.1	7,099.2	67.2	67.7	67.65	3,369.5	693.7	535.2	408.3	126.92	4.217	
10,800.0	7,302.4	10,646.1	7,098.7	69.1	69.5	67.64	3,469.5	694.1	535.3	404.9	130.39	4.105	
10,900.0	7,302.0	10,746.1	7,098.3	70.9	71.4	67.63	3,569.5	694.6	535.3	401.5	133.87	3.999	
11,000.0	7,301.7	10,846.1	7,097.8	72.8	73.2	67.62	3,669.5	695.0	535.4	398.0	137.35	3.898	
11,100.0	7,301.3	10,946.1	7,097.3	74.7	75.1	67.60	3,769.5	695.4	535.4	394.6	140.84	3.802	
11,200.0	7,301.0	11,046.1	7,096.9	76.5	77.0	67.59	3,869.5	695.8	535.5	391.1	144.33	3.710	
11,300.0	7,300.6	11,146.1	7,096.4	78.4	78.8	67.58	3,969.5	696.3	535.5	387.7	147.83	3.623	
11,400.0	7,300.3	11,246.1	7,095.9	80.3	80.7	67.57	4,069.5	696.7	535.6	384.2	151.33	3.539	
11,500.0	7,299.9	11,346.1	7,095.4	82.2	82.5	67.55	4,169.5	697.1	535.6	380.8	154.83	3.459	
11,600.0	7,299.6	11,446.1	7,095.0	84.0	84.4	67.54	4,269.5	697.5	535.7	377.3	158.33	3.383	
11,700.0	7,299.2	11,546.1	7,094.5	85.9	86.3	67.53	4,369.5	698.0	535.7	373.9	161.84	3.310	
11,800.0	7,298.9	11,646.1	7,094.0	87.8	88.2	67.52	4,469.5	698.4	535.7	370.4	165.35	3.240	
11,900.0	7,298.5	11,746.1	7,093.6	89.7	90.0	67.51	4,569.5	698.8	535.8	366.9	168.86	3.173	
11,910.2	7,298.5	11,756.4	7,093.5	89.8	90.2	67.51	4,579.7	698.9	535.8	366.6	169.18	3.167 SF	

Company:	Verdad Oil & Gas Corporation	Local Co-ordinate Reference:	Well Meehl 01N-65W-24-5C
Project:	SEC.24-T1N-R65W	TVD Reference:	WELL @ 5038.5ft (RKB - 16.5')
Reference Site:	Meehl 01N-65W-24 Pad Sec.24-T01N-R65W	MD Reference:	WELL @ 5038.5ft (RKB - 16.5')
Site Error:	0.0ft	North Reference:	True
Reference Well:	Meehl 01N-65W-24-5C	Survey Calculation Method:	Minimum Curvature
Well Error:	0.0ft	Output errors are at	2.00 sigma
Reference Wellbore	Wellbore #1	Database:	landmark
Reference Design:	Plan #1 (10-17-14)	Offset TVD Reference:	Offset Datum

Offset Design												Offset Site Error:	0.0 ft
Survey Program: 0-MWD												Offset Well Error:	0.0 ft
Reference		Offset		Semi Major Axis			Distance						
Measured Depth (ft)	Vertical Depth (ft)	Measured Depth (ft)	Vertical Depth (ft)	Reference (ft)	Offset (ft)	Highside Toolface (°)	Offset Wellbore Centre +N/-S (ft)	+E/-W (ft)	Between Centres (ft)	Between Ellipses (ft)	Minimum Separation (ft)	Separation Factor	Warning
0.0	0.0	0.0	0.0	0.0	0.0	90.03	0.0	59.9	59.9				
100.0	100.0	100.0	100.0	0.1	0.1	90.03	0.0	59.9	59.9	59.7	0.22	266.626	
200.0	200.0	200.0	200.0	0.3	0.3	90.03	0.0	59.9	59.9	59.3	0.67	88.875 CC, ES	
300.0	300.0	298.0	298.0	0.6	0.5	90.45	-0.5	61.5	61.6	60.5	1.11	55.619	
400.0	400.0	395.7	395.6	0.8	0.8	91.58	-1.8	66.4	66.5	65.0	1.55	43.034	
500.0	500.0	493.0	492.5	1.0	1.0	93.13	-4.1	74.4	74.8	72.8	2.00	37.449	
600.0	600.0	589.7	588.5	1.2	1.3	94.79	-7.2	85.4	86.5	84.0	2.46	35.117	
700.0	700.0	685.4	683.1	1.5	1.6	96.36	-11.1	99.4	101.5	98.5	2.94	34.478	
800.0	800.0	780.1	776.1	1.7	2.0	97.73	-15.8	116.3	119.8	116.3	3.44	34.784	
900.0	900.0	873.5	867.3	1.9	2.4	98.89	-21.2	135.8	141.3	137.3	3.97	35.631	
1,000.0	1,000.0	966.5	957.4	2.1	2.8	99.86	-27.5	158.0	166.0	161.4	4.52	36.755	
1,100.0	1,100.0	1,063.1	1,050.8	2.4	3.3	100.63	-34.2	182.0	191.6	186.6	5.09	37.666	
1,200.0	1,200.0	1,159.7	1,144.1	2.6	3.8	101.22	-40.9	206.0	217.3	211.7	5.67	38.336	
1,300.0	1,300.0	1,256.4	1,237.5	2.8	4.3	101.69	-47.6	230.0	243.1	236.8	6.26	38.831	
1,400.0	1,400.0	1,353.0	1,330.8	3.0	4.9	102.06	-54.3	254.0	268.8	261.9	6.86	39.206	
1,500.0	1,500.0	1,449.6	1,424.2	3.3	5.4	102.37	-61.0	278.0	294.5	287.1	7.46	39.497	
1,600.0	1,600.0	1,546.2	1,517.5	3.5	5.9	102.63	-67.7	302.0	320.3	312.2	8.06	39.729	
1,700.0	1,700.0	1,642.8	1,610.9	3.7	6.5	102.86	-74.4	326.0	346.0	337.4	8.67	39.916	
1,800.0	1,800.0	1,739.5	1,704.2	3.9	7.0	103.05	-81.1	350.0	371.8	362.5	9.28	40.070	
1,900.0	1,900.0	1,836.1	1,797.6	4.2	7.5	103.21	-87.8	374.0	397.5	387.7	9.89	40.198	
2,000.0	2,000.0	1,932.7	1,890.9	4.4	8.1	103.36	-94.5	398.0	423.3	412.8	10.50	40.306	
2,100.0	2,100.0	2,029.7	1,984.6	4.6	8.6	-36.56	-101.2	422.0	447.7	438.1	9.65	46.411	
2,200.0	2,199.8	2,127.3	2,078.9	4.8	9.1	-36.56	-108.0	446.3	469.4	459.3	10.11	46.436	
2,300.0	2,299.5	2,225.4	2,173.7	5.0	9.7	-36.82	-114.8	470.6	488.4	477.8	10.58	46.167	
2,400.0	2,398.7	2,323.8	2,268.8	5.2	10.2	-37.38	-121.7	495.1	504.8	493.7	11.06	45.650	
2,500.0	2,497.9	2,422.4	2,364.0	5.4	10.8	-38.07	-128.5	519.5	520.7	509.2	11.55	45.086	
2,600.0	2,597.1	2,520.9	2,459.2	5.6	11.3	-38.72	-135.3	544.0	536.7	524.6	12.05	44.535	
2,700.0	2,696.3	2,619.4	2,554.4	5.8	11.9	-39.34	-142.2	568.5	552.7	540.2	12.56	43.998	
2,800.0	2,795.5	2,718.0	2,649.6	6.1	12.4	-39.92	-149.0	592.9	568.9	555.8	13.08	43.476	
2,900.0	2,894.7	2,816.5	2,744.9	6.3	13.0	-40.47	-155.9	617.4	585.0	571.4	13.61	42.971	
3,000.0	2,993.9	2,915.0	2,840.1	6.6	13.5	-40.98	-162.7	641.9	601.2	587.1	14.15	42.483	
3,100.0	3,093.0	3,013.6	2,935.3	6.9	14.0	-41.48	-169.5	666.3	617.5	602.8	14.70	42.013	
3,200.0	3,192.2	3,112.1	3,030.5	7.1	14.6	-41.94	-176.4	690.8	633.8	618.5	15.25	41.560	
3,300.0	3,291.4	3,210.6	3,125.7	7.4	15.1	-42.39	-183.2	715.3	650.1	634.3	15.81	41.125	
3,400.0	3,390.6	3,309.2	3,220.9	7.7	15.7	-42.81	-190.1	739.7	666.5	650.1	16.37	40.708	
3,500.0	3,489.8	3,425.1	3,333.1	8.0	16.3	-43.29	-197.8	767.6	682.2	665.2	16.97	40.203	
3,600.0	3,589.0	3,555.0	3,460.1	8.3	16.7	-43.88	-205.2	794.0	693.9	676.3	17.56	39.519	
3,700.0	3,688.2	3,686.0	3,589.3	8.6	17.1	-44.53	-211.1	814.9	701.2	683.1	18.14	38.649	
3,800.0	3,787.4	3,817.4	3,719.7	8.9	17.4	-45.26	-215.3	830.2	704.1	685.4	18.72	37.616	
3,900.0	3,886.5	3,948.7	3,850.6	9.2	17.7	-46.08	-218.0	839.7	702.5	683.2	19.28	36.435	
4,000.0	3,985.7	4,079.4	3,981.3	9.5	17.8	-47.01	-219.0	843.4	696.6	676.8	19.84	35.103	
4,100.0	4,084.9	4,183.1	4,084.9	9.8	17.9	-47.81	-219.0	843.4	688.0	667.7	20.35	33.803	
4,200.0	4,184.1	4,282.3	4,184.1	10.1	18.0	-48.60	-219.0	843.4	679.5	658.6	20.86	32.574	
4,300.0	4,283.3	4,381.5	4,283.3	10.4	18.1	-49.33	-219.0	843.4	671.4	650.0	21.34	31.459	
4,400.0	4,382.9	4,481.0	4,382.9	10.6	18.2	-49.85	-219.0	843.4	665.3	643.6	21.75	30.596	
4,500.0	4,482.7	4,580.9	4,482.7	10.8	18.4	-50.17	-219.0	843.4	661.6	639.5	22.11	29.918	
4,600.0	4,582.7	4,680.8	4,582.7	11.0	18.5	-50.31	-219.0	843.4	660.1	637.6	22.44	29.415	
4,645.3	4,628.0	4,726.2	4,628.0	11.1	18.5	-50.32	-219.0	843.4	659.9	637.3	22.60	29.203	
4,700.0	4,682.7	4,780.8	4,682.7	11.2	18.6	89.90	-219.0	843.4	660.0	637.2	22.81	28.934	
4,800.0	4,782.7	4,880.8	4,782.7	11.4	18.7	89.90	-219.0	843.4	660.0	636.9	23.17	28.487	
4,900.0	4,882.7	4,980.8	4,882.7	11.6	18.8	89.90	-219.0	843.4	660.0	636.5	23.53	28.049	
5,000.0	4,982.7	5,080.8	4,982.7	11.8	18.9	89.90	-219.0	843.4	660.0	636.1	23.90	27.622	

CC - Min centre to center distance or convergent point, SF - min separation factor, ES - min ellipse separation

Company:	Verdad Oil & Gas Corporation	Local Co-ordinate Reference:	Well Meehl 01N-65W-24-5C
Project:	SEC.24-T1N-R65W	TVD Reference:	WELL @ 5038.5ft (RKB - 16.5')
Reference Site:	Meehl 01N-65W-24 Pad Sec.24-T01N-R65W	MD Reference:	WELL @ 5038.5ft (RKB - 16.5')
Site Error:	0.0ft	North Reference:	True
Reference Well:	Meehl 01N-65W-24-5C	Survey Calculation Method:	Minimum Curvature
Well Error:	0.0ft	Output errors are at	2.00 sigma
Reference Wellbore	Wellbore #1	Database:	landmark
Reference Design:	Plan #1 (10-17-14)	Offset TVD Reference:	Offset Datum

Offset Design												Offset Site Error:	0.0 ft
Survey Program: 0-MWD												Offset Well Error:	0.0 ft
Reference		Offset		Semi Major Axis			Distance						
Measured Depth (ft)	Vertical Depth (ft)	Measured Depth (ft)	Vertical Depth (ft)	Reference (ft)	Offset (ft)	Highside Toolface (°)	Offset Wellbore Centre +N/-S (ft)	+E/-W (ft)	Between Centres (ft)	Between Ellipses (ft)	Minimum Separation (ft)	Separation Factor	Warning
5,100.0	5,082.7	5,180.8	5,082.7	11.9	19.1	89.90	-219.0	843.4	660.0	635.8	24.26	27.204	
5,200.0	5,182.7	5,280.8	5,182.7	12.1	19.2	89.90	-219.0	843.4	660.0	635.4	24.63	26.796	
5,300.0	5,282.7	5,380.8	5,282.7	12.3	19.3	89.90	-219.0	843.4	660.0	635.0	25.00	26.397	
5,400.0	5,382.7	5,480.8	5,382.7	12.5	19.4	89.90	-219.0	843.4	660.0	634.7	25.38	26.007	
5,500.0	5,482.7	5,580.8	5,482.7	12.7	19.6	89.90	-219.0	843.4	660.0	634.3	25.76	25.627	
5,600.0	5,582.7	5,680.8	5,582.7	12.9	19.7	89.90	-219.0	843.4	660.0	633.9	26.13	25.255	
5,700.0	5,682.7	5,780.8	5,682.7	13.1	19.8	89.90	-219.0	843.4	660.0	633.5	26.52	24.891	
5,800.0	5,782.7	5,880.8	5,782.7	13.3	20.0	89.90	-219.0	843.4	660.0	633.1	26.90	24.536	
5,900.0	5,882.7	5,980.8	5,882.7	13.5	20.1	89.90	-219.0	843.4	660.0	632.7	27.29	24.190	
6,000.0	5,982.7	6,080.8	5,982.7	13.7	20.2	89.90	-219.0	843.4	660.0	632.4	27.67	23.851	
6,100.0	6,082.7	6,180.8	6,082.7	13.9	20.4	89.90	-219.0	843.4	660.0	632.0	28.06	23.520	
6,200.0	6,182.7	6,280.8	6,182.7	14.1	20.5	89.90	-219.0	843.4	660.0	631.6	28.45	23.197	
6,300.0	6,282.7	6,380.8	6,282.7	14.3	20.6	89.90	-219.0	843.4	660.0	631.2	28.85	22.881	
6,400.0	6,382.7	6,480.8	6,382.7	14.5	20.8	89.90	-219.0	843.4	660.0	630.8	29.24	22.573	
6,500.0	6,482.7	6,580.8	6,482.7	14.7	20.9	89.90	-219.0	843.4	660.0	630.4	29.64	22.271	
6,600.0	6,582.7	6,680.8	6,582.7	14.9	21.1	89.90	-219.0	843.4	660.0	630.0	30.03	21.977	
6,700.0	6,682.7	6,780.8	6,682.7	15.1	21.2	89.90	-219.0	843.4	660.0	629.6	30.43	21.689	
6,800.0	6,782.7	6,880.8	6,782.7	15.3	21.4	89.90	-219.0	843.4	660.0	629.2	30.83	21.407	
6,867.7	6,850.3	6,948.4	6,850.3	15.4	21.5	90.00	-219.0	843.4	660.0	629.0	31.03	21.268	
6,900.0	6,882.2	6,980.4	6,882.2	15.5	21.5	90.33	-219.0	843.4	660.0	628.9	31.13	21.206	
7,000.0	6,978.5	7,081.7	6,983.0	15.6	21.7	91.92	-210.6	843.5	660.4	629.1	31.26	21.126	
7,100.0	7,067.9	7,188.4	7,083.7	15.7	21.7	93.06	-176.0	843.6	661.0	629.6	31.32	21.102	
7,200.0	7,147.2	7,298.7	7,174.8	15.7	21.7	93.60	-114.6	843.9	661.3	629.9	31.42	21.051	
7,300.0	7,213.5	7,409.7	7,247.0	15.8	21.7	93.46	-30.7	844.2	661.2	629.5	31.67	20.876	
7,400.0	7,264.3	7,518.8	7,293.7	15.8	21.7	92.66	67.5	844.6	660.7	628.5	32.22	20.508	
7,500.0	7,297.8	7,623.6	7,313.1	16.2	21.8	91.31	170.2	845.1	660.2	627.1	33.11	19.939	
7,600.0	7,312.7	7,723.2	7,313.5	16.8	22.0	90.07	269.8	845.5	660.0	625.7	34.34	19.221	
7,700.0	7,313.2	7,823.2	7,313.2	17.6	22.3	90.00	369.8	845.9	660.0	624.2	35.84	18.414	
7,800.0	7,312.8	7,923.2	7,312.8	18.6	22.8	90.00	469.8	846.3	660.0	622.3	37.67	17.520	
7,900.0	7,312.5	8,023.2	7,312.5	19.7	23.5	90.00	569.8	846.8	660.0	620.2	39.79	16.588	
8,000.0	7,312.1	8,123.2	7,312.2	20.9	24.4	90.00	669.8	847.2	660.0	617.9	42.14	15.660	
8,100.0	7,311.8	8,223.2	7,311.8	22.2	25.4	90.00	769.8	847.6	660.0	615.3	44.71	14.763	
8,200.0	7,311.5	8,323.2	7,311.5	23.6	26.6	90.00	869.8	848.0	660.0	612.6	47.44	13.913	
8,300.0	7,311.1	8,423.2	7,311.1	25.0	27.8	90.00	969.8	848.5	660.0	609.7	50.31	13.118	
8,400.0	7,310.8	8,523.2	7,310.8	26.5	29.1	90.00	1,069.8	848.9	660.0	606.7	53.31	12.381	
8,500.0	7,310.4	8,623.2	7,310.4	28.1	30.5	90.00	1,169.8	849.3	660.0	603.6	56.40	11.701	
8,600.0	7,310.1	8,723.2	7,310.1	29.7	32.0	90.00	1,269.8	849.7	660.0	600.4	59.59	11.076	
8,700.0	7,309.7	8,823.2	7,309.7	31.3	33.5	90.00	1,369.8	850.2	660.0	597.2	62.84	10.503	
8,800.0	7,309.4	8,923.2	7,309.4	33.0	35.1	90.00	1,469.8	850.6	660.0	593.8	66.15	9.977	
8,900.0	7,309.0	9,023.2	7,309.0	34.7	36.7	90.00	1,569.8	851.0	660.0	590.5	69.52	9.493	
9,000.0	7,308.7	9,123.2	7,308.7	36.4	38.3	90.00	1,669.8	851.4	660.0	587.1	72.93	9.049	
9,100.0	7,308.3	9,223.2	7,308.3	38.1	39.9	90.00	1,769.8	851.9	660.0	583.6	76.39	8.640	
9,200.0	7,308.0	9,323.2	7,308.0	39.9	41.6	90.00	1,869.8	852.3	660.0	580.1	79.87	8.263	
9,300.0	7,307.6	9,423.2	7,307.6	41.6	43.3	90.00	1,969.8	852.7	660.0	576.6	83.39	7.914	
9,400.0	7,307.3	9,523.2	7,307.3	43.4	45.0	90.00	2,069.8	853.1	660.0	573.1	86.93	7.592	
9,500.0	7,306.9	9,623.2	7,306.9	45.2	46.7	90.00	2,169.8	853.6	660.0	569.5	90.50	7.293	
9,600.0	7,306.6	9,723.2	7,306.6	47.0	48.5	90.00	2,269.8	854.0	660.0	565.9	94.09	7.015	
9,700.0	7,306.2	9,823.2	7,306.2	48.8	50.2	90.00	2,369.8	854.4	660.0	562.3	97.69	6.756	
9,800.0	7,305.9	9,923.2	7,305.9	50.6	52.0	90.00	2,469.8	854.8	660.0	558.7	101.31	6.514	
9,900.0	7,305.5	10,023.2	7,305.5	52.4	53.7	90.00	2,569.8	855.3	660.0	555.0	104.95	6.289	
10,000.0	7,305.2	10,123.2	7,305.2	54.3	55.5	90.00	2,669.8	855.7	660.0	551.4	108.60	6.077	
10,100.0	7,304.8	10,223.2	7,304.8	56.1	57.3	90.00	2,769.8	856.1	660.0	547.7	112.26	5.879	

CC - Min centre to center distance or convergent point, SF - min separation factor, ES - min ellipse separation

Company:	Verdad Oil & Gas Corporation	Local Co-ordinate Reference:	Well Meehl 01N-65W-24-5C
Project:	SEC.24-T1N-R65W	TVD Reference:	WELL @ 5038.5ft (RKB - 16.5')
Reference Site:	Meehl 01N-65W-24 Pad Sec.24-T01N-R65W	MD Reference:	WELL @ 5038.5ft (RKB - 16.5')
Site Error:	0.0ft	North Reference:	True
Reference Well:	Meehl 01N-65W-24-5C	Survey Calculation Method:	Minimum Curvature
Well Error:	0.0ft	Output errors are at	2.00 sigma
Reference Wellbore	Wellbore #1	Database:	landmark
Reference Design:	Plan #1 (10-17-14)	Offset TVD Reference:	Offset Datum

Offset Design Meehl 01N-65W-24 Pad Sec.24-T01N-R65W - Meehl 01N-65W-24-9C - Wellbore #1 - Plan #1 (10-17-1												Offset Site Error:	0.0 ft
Survey Program: 0-MWD												Offset Well Error:	0.0 ft
Reference		Offset		Semi Major Axis			Distance						
Measured Depth (ft)	Vertical Depth (ft)	Measured Depth (ft)	Vertical Depth (ft)	Reference (ft)	Offset (ft)	Highside Toolface (°)	Offset Wellbore Centre +N/-S (ft)	+E/-W (ft)	Between Centres (ft)	Between Ellipses (ft)	Minimum Separation (ft)	Separation Factor	Warning
10,200.0	7,304.5	10,323.2	7,304.5	57.9	59.1	90.00	2,869.8	856.5	660.0	544.0	115.93	5.693	
10,300.0	7,304.1	10,423.2	7,304.1	59.8	60.9	90.00	2,969.8	856.9	660.0	540.4	119.61	5.518	
10,400.0	7,303.8	10,523.2	7,303.8	61.6	62.7	90.00	3,069.8	857.4	660.0	536.7	123.30	5.352	
10,500.0	7,303.4	10,623.2	7,303.4	63.5	64.5	90.00	3,169.8	857.8	660.0	533.0	127.00	5.197	
10,600.0	7,303.1	10,723.2	7,303.1	65.3	66.4	90.00	3,269.8	858.2	660.0	529.3	130.71	5.049	
10,700.0	7,302.7	10,823.2	7,302.7	67.2	68.2	90.00	3,369.8	858.6	660.0	525.5	134.42	4.910	
10,800.0	7,302.4	10,923.2	7,302.4	69.1	70.0	90.00	3,469.8	859.1	660.0	521.8	138.14	4.777	
10,900.0	7,302.0	11,023.2	7,302.0	70.9	71.9	90.00	3,569.8	859.5	660.0	518.1	141.87	4.652	
11,000.0	7,301.7	11,123.2	7,301.7	72.8	73.7	90.00	3,669.7	859.9	660.0	514.4	145.60	4.533	
11,100.0	7,301.3	11,223.2	7,301.3	74.7	75.6	90.00	3,769.7	860.3	660.0	510.6	149.33	4.419	
11,200.0	7,301.0	11,323.2	7,301.0	76.5	77.4	90.00	3,869.7	860.8	660.0	506.9	153.07	4.311	
11,300.0	7,300.6	11,423.2	7,300.6	78.4	79.3	90.00	3,969.7	861.2	660.0	503.1	156.82	4.208	
11,400.0	7,300.3	11,523.2	7,300.3	80.3	81.1	90.00	4,069.7	861.6	660.0	499.4	160.56	4.110	
11,500.0	7,299.9	11,623.2	7,299.9	82.2	83.0	90.00	4,169.7	862.0	660.0	495.6	164.32	4.016	
11,600.0	7,299.6	11,723.2	7,299.6	84.0	84.8	90.00	4,269.7	862.5	660.0	491.9	168.07	3.927	
11,700.0	7,299.2	11,823.2	7,299.2	85.9	86.7	90.00	4,369.7	862.9	660.0	488.1	171.83	3.841	
11,800.0	7,298.9	11,923.2	7,298.9	87.8	88.6	90.00	4,469.7	863.3	659.9	484.4	175.59	3.758	
11,900.0	7,298.5	12,023.2	7,298.5	89.7	90.4	90.00	4,569.7	863.7	659.9	480.6	179.36	3.680	
11,910.2	7,298.5	12,033.4	7,298.5	89.8	90.6	90.00	4,580.0	863.8	659.9	480.2	179.70	3.672 SF	

Company:	Verdad Oil & Gas Corporation	Local Co-ordinate Reference:	Well Meehl 01N-65W-24-5C
Project:	SEC.24-T1N-R65W	TVD Reference:	WELL @ 5038.5ft (RKB - 16.5')
Reference Site:	Meehl 01N-65W-24 Pad Sec.24-T01N-R65W	MD Reference:	WELL @ 5038.5ft (RKB - 16.5')
Site Error:	0.0ft	North Reference:	True
Reference Well:	Meehl 01N-65W-24-5C	Survey Calculation Method:	Minimum Curvature
Well Error:	0.0ft	Output errors are at	2.00 sigma
Reference Wellbore	Wellbore #1	Database:	landmark
Reference Design:	Plan #1 (10-17-14)	Offset TVD Reference:	Offset Datum

Reference Depths are relative to WELL @ 5038.5ft (RKB - 16.5')

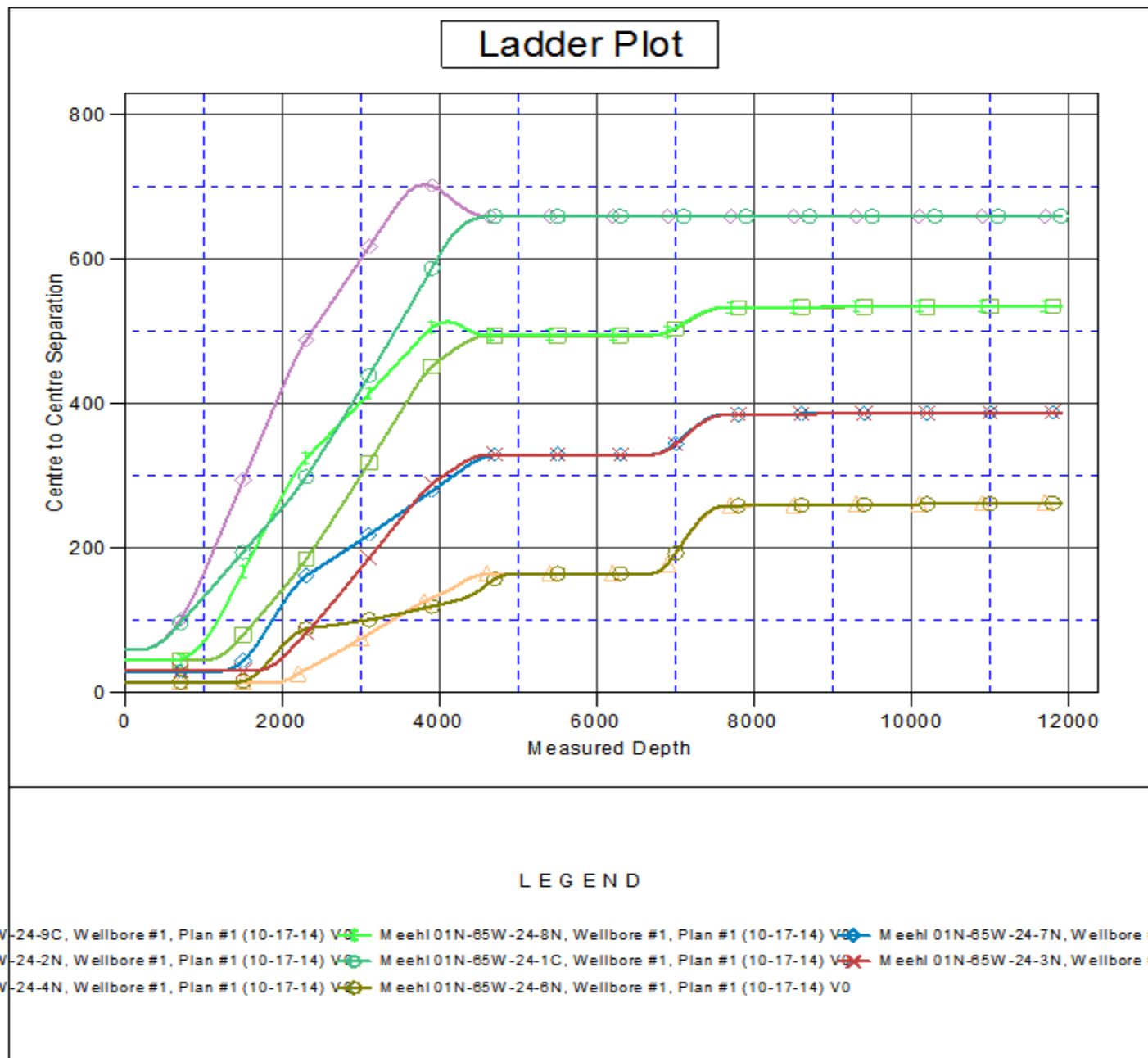
Offset Depths are relative to Offset Datum

Central Meridian is -105.500000 °

Coordinates are relative to: Meehl 01N-65W-24-5C

Coordinate System is US State Plane 1983, Colorado Northern Zone

Grid Convergence at Surface is: 0.58°



Company: Verdad Oil & Gas Corporation
Project: SEC.24-T1N-R65W
Reference Site: Meehl 01N-65W-24 Pad Sec.24-T01N-R65W
Site Error: 0.0ft
Reference Well: Meehl 01N-65W-24-5C
Well Error: 0.0ft
Reference Wellbore: Wellbore #1
Reference Design: Plan #1 (10-17-14)

Local Co-ordinate Reference: Well Meehl 01N-65W-24-5C
TVD Reference: WELL @ 5038.5ft (RKB - 16.5')
MD Reference: WELL @ 5038.5ft (RKB - 16.5')
North Reference: True
Survey Calculation Method: Minimum Curvature
Output errors are at 2.00 sigma
Database: landmark
Offset TVD Reference: Offset Datum

Reference Depths are relative to WELL @ 5038.5ft (RKB - 16.5')

Offset Depths are relative to Offset Datum

Central Meridian is -105.500000 °

Coordinates are relative to: Meehl 01N-65W-24-5C

Coordinate System is US State Plane 1983, Colorado Northern Zone

Grid Convergence at Surface is: 0.58°

