

Verdad Oil & Gas Corporation

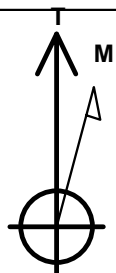
Well Name: **Meehl 01N-65W-24-4N**

Surface Location: Meehl 01N-65W-24 Pad Sec.24-T01N-R65W
North American Datum 1983 , US State Plane 1983 , Colorado Northern Zone
Ground Elevation: 5022.0

+N/-S	+E/-W	Northing	Easting	Latitude	Longitude	Slot
0.0	0.0	1255137.01	3249709.27	40.030292	-104.608259	
RKB - 16.5' WELL @ 5038.5ft (RKB - 16.5')						

WELLBORE TARGET DETAILS

Name	TVD	+N/-S	+E/-W	Shape
460' Setback BHL	1.0	4585.3	-745.1	Polygon
460' Setback SHL	1.0	189.6	-745.1	Polygon
Sectionline	1.0	-270.4	-745.1	Polygon
SHL 270'FSL & 1518'FEL	1.0	0.0	0.0	Point
BHL 460'FNL & 1485'FEL	7093.5	4583.5	53.8	Point



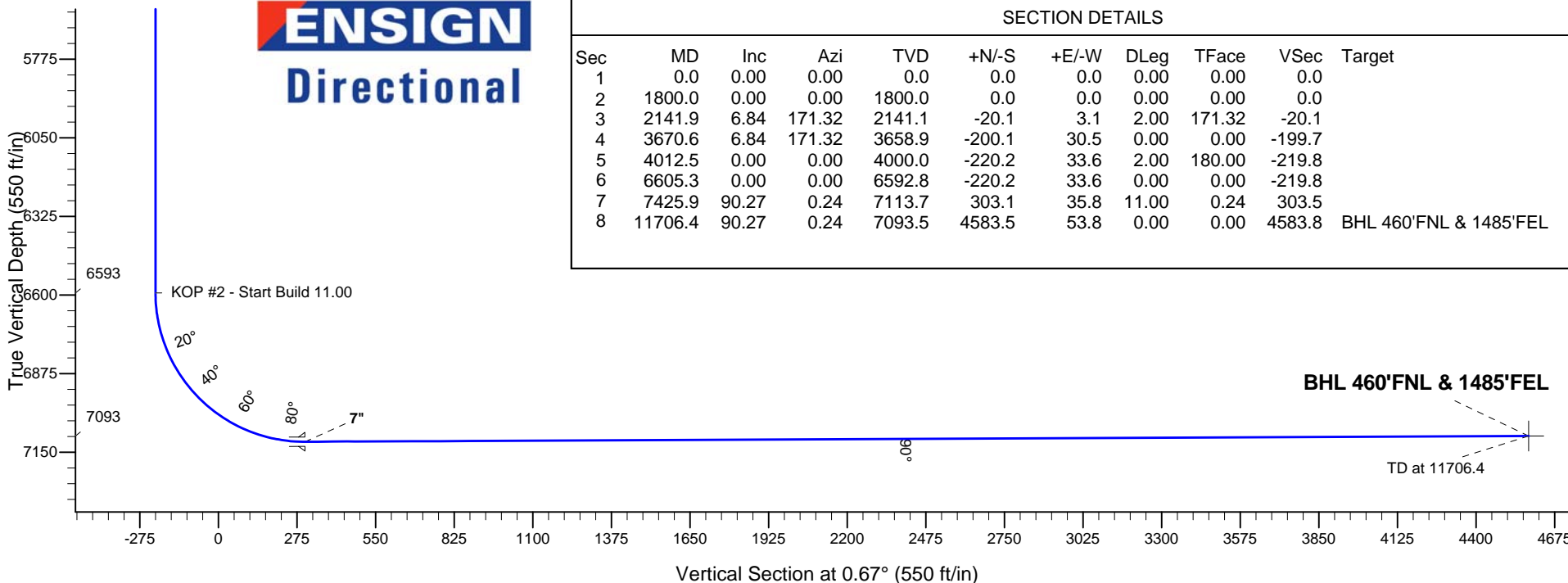
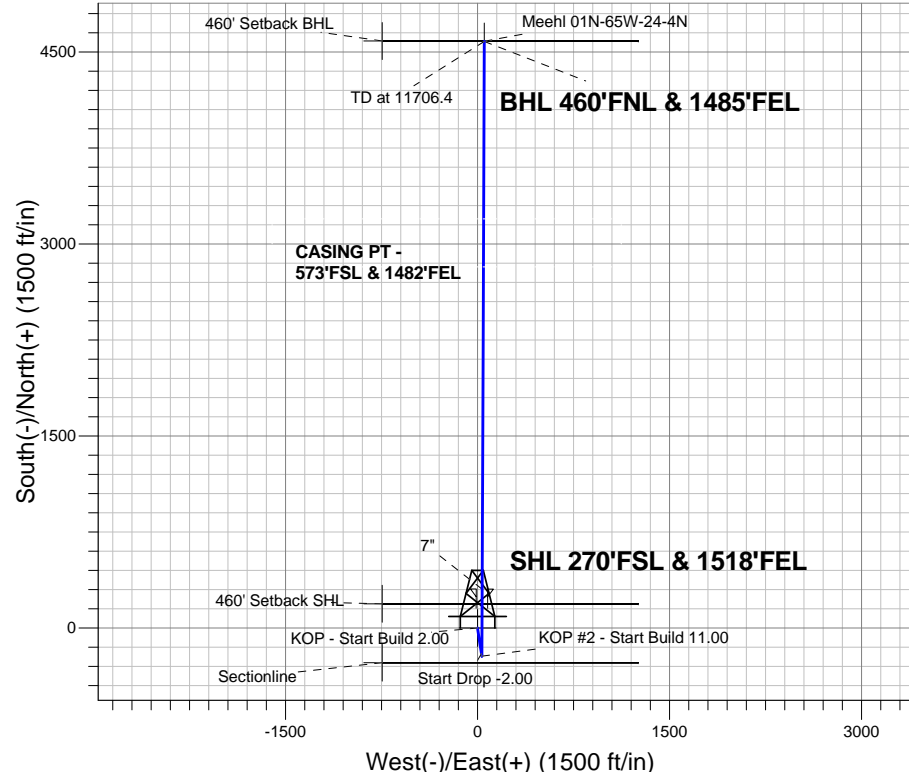
Azimuths to True North
Magnetic North: 8.30°

Magnetic Field
Strength: 52600.0nT
Dip Angle: 66.66°
Date: 10/17/2014
Model: IGRF2010

Meehl 01N-65W-24 Pad Sec.24-T01N-R65W
Meehl 01N-65W-24-4N
Plan #1 (10-17-14)

ANNOTATIONS

TVD	MD	Annotation
1800.0	1800.0	KOP - Start Build 2.00
3658.9	3670.6	Start Drop -2.00
6592.8	6605.3	KOP #2 - Start Build 11.00
7093.5	11706.4	TD at 11706.4



ENSIGN
Directional

SECTION DETAILS

Sec	MD	Inc	Azi	TVD	+N/-S	+E/-W	DLeg	TFace	VSec	Target
1	0.0	0.00	0.00	0.0	0.0	0.0	0.00	0.00	0.0	
2	1800.0	0.00	0.00	1800.0	0.0	0.0	0.00	0.00	0.0	
3	2141.9	6.84	171.32	2141.1	-20.1	3.1	2.00	171.32	-20.1	
4	3670.6	6.84	171.32	3658.9	-200.1	30.5	0.00	0.00	-199.7	
5	4012.5	0.00	0.00	4000.0	-220.2	33.6	2.00	180.00	-219.8	
6	6605.3	0.00	0.00	6592.8	-220.2	33.6	0.00	0.00	-219.8	
7	7425.9	90.27	0.24	7113.7	303.1	35.8	11.00	0.24	303.5	
8	11706.4	90.27	0.24	7093.5	4583.5	53.8	0.00	0.00	4583.8	BHL 460'FNL & 1485'FEL



Verdad Oil & Gas Corporation

SEC.24-T1N-R65W

Meehl 01N-65W-24 Pad Sec.24-T01N-R65W

Meehl 01N-65W-24-4N

Wellbore #1

Plan: Plan #1 (10-17-14)

Standard Planning Report

20 October, 2014

Database:	landmark	Local Co-ordinate Reference:	Well Meehl 01N-65W-24-4N
Company:	Verdad Oil & Gas Corporation	TVD Reference:	WELL @ 5038.5ft (RKB - 16.5')
Project:	SEC.24-T1N-R65W	MD Reference:	WELL @ 5038.5ft (RKB - 16.5')
Site:	Meehl 01N-65W-24 Pad Sec.24-T01N-R65W	North Reference:	True
Well:	Meehl 01N-65W-24-4N	Survey Calculation Method:	Minimum Curvature
Wellbore:	Wellbore #1		
Design:	Plan #1 (10-17-14)		

Project	SEC.24-T1N-R65W		
Map System:	US State Plane 1983	System Datum:	Mean Sea Level
Geo Datum:	North American Datum 1983		Using Well Reference Point
Map Zone:	Colorado Northern Zone		Using geodetic scale factor

Site						Meehl 01N-65W-24 Pad Sec.24-T01N-R65W											
Site Position:						Northing:			1,255,136.20ft			Latitude:			40.030291		
From:			Lat/Long			Easting:			3,249,664.19ft			Longitude:			-104.608420		
Position Uncertainty:			0.0 ft			Slot Radius:			"			Grid Convergence:			0.58 °		

Well	Meehl 01N-65W-24-4N					
Well Position	+N/-S	0.4 ft	Northing:	1,255,137.01 ft	Latitude:	40.030292
	+E/-W	45.1 ft	Easting:	3,249,709.27 ft	Longitude:	-104.608259
Position Uncertainty		0.0 ft	Wellhead Elevation:	ft	Ground Level:	5,022.0 ft

Wellbore	Wellbore #1				
Magnetics	Model Name	Sample Date	Declination (°)	Dip Angle (°)	Field Strength (nT)
	IGRF2010	10/17/2014	8.30	66.66	52,600

Design	Plan #1 (10-17-14)			
Audit Notes:				
Version:	Phase:	PROTOTYPE	Tie On Depth:	0.0
Vertical Section:	Depth From (TVD) (ft)	+N/-S (ft)	+E/-W (ft)	Direction (°)
	0.0	0.0	0.0	0.67

Plan Sections										
Measured Depth (ft)	Inclination (°)	Azimuth (°)	Vertical Depth (ft)	+N/-S (ft)	+E/-W (ft)	Dogleg Rate (°/100ft)	Build Rate (°/100ft)	Turn Rate (°/100ft)	TFO (°)	Target
0.0	0.00	0.00	0.0	0.0	0.0	0.00	0.00	0.00	0.00	
1,800.0	0.00	0.00	1,800.0	0.0	0.0	0.00	0.00	0.00	0.00	
2,141.9	6.84	171.32	2,141.1	-20.1	3.1	2.00	2.00	0.00	171.32	
3,670.6	6.84	171.32	3,658.9	-200.1	30.5	0.00	0.00	0.00	0.00	
4,012.5	0.00	0.00	4,000.0	-220.2	33.6	2.00	-2.00	0.00	180.00	
6,605.3	0.00	0.00	6,592.8	-220.2	33.6	0.00	0.00	0.00	0.00	
7,425.9	90.27	0.24	7,113.7	303.1	35.8	11.00	11.00	0.00	0.24	
11,706.4	90.27	0.24	7,093.5	4,583.5	53.8	0.00	0.00	0.00	0.00	BHL 460'FNL & 146

Database:	landmark	Local Co-ordinate Reference:	Well Meehl 01N-65W-24-4N
Company:	Verdad Oil & Gas Corporation	TVD Reference:	WELL @ 5038.5ft (RKB - 16.5')
Project:	SEC.24-T1N-R65W	MD Reference:	WELL @ 5038.5ft (RKB - 16.5')
Site:	Meehl 01N-65W-24 Pad Sec.24-T01N-R65W	North Reference:	True
Well:	Meehl 01N-65W-24-4N	Survey Calculation Method:	Minimum Curvature
Wellbore:	Wellbore #1		
Design:	Plan #1 (10-17-14)		

Planned Survey									
Measured Depth (ft)	Inclination (°)	Azimuth (°)	Vertical Depth (ft)	+N/-S (ft)	+E/-W (ft)	Vertical Section (ft)	Dogleg Rate (°/100ft)	Build Rate (°/100ft)	Turn Rate (°/100ft)
0.0	0.00	0.00	0.0	0.0	0.0	0.0	0.00	0.00	0.00
100.0	0.00	0.00	100.0	0.0	0.0	0.0	0.00	0.00	0.00
200.0	0.00	0.00	200.0	0.0	0.0	0.0	0.00	0.00	0.00
300.0	0.00	0.00	300.0	0.0	0.0	0.0	0.00	0.00	0.00
400.0	0.00	0.00	400.0	0.0	0.0	0.0	0.00	0.00	0.00
500.0	0.00	0.00	500.0	0.0	0.0	0.0	0.00	0.00	0.00
600.0	0.00	0.00	600.0	0.0	0.0	0.0	0.00	0.00	0.00
700.0	0.00	0.00	700.0	0.0	0.0	0.0	0.00	0.00	0.00
800.0	0.00	0.00	800.0	0.0	0.0	0.0	0.00	0.00	0.00
900.0	0.00	0.00	900.0	0.0	0.0	0.0	0.00	0.00	0.00
1,000.0	0.00	0.00	1,000.0	0.0	0.0	0.0	0.00	0.00	0.00
1,100.0	0.00	0.00	1,100.0	0.0	0.0	0.0	0.00	0.00	0.00
1,200.0	0.00	0.00	1,200.0	0.0	0.0	0.0	0.00	0.00	0.00
1,300.0	0.00	0.00	1,300.0	0.0	0.0	0.0	0.00	0.00	0.00
1,400.0	0.00	0.00	1,400.0	0.0	0.0	0.0	0.00	0.00	0.00
1,500.0	0.00	0.00	1,500.0	0.0	0.0	0.0	0.00	0.00	0.00
1,600.0	0.00	0.00	1,600.0	0.0	0.0	0.0	0.00	0.00	0.00
1,700.0	0.00	0.00	1,700.0	0.0	0.0	0.0	0.00	0.00	0.00
1,800.0	0.00	0.00	1,800.0	0.0	0.0	0.0	0.00	0.00	0.00
KOP - Start Build 2.00									
1,900.0	2.00	171.32	1,900.0	-1.7	0.3	-1.7	2.00	2.00	0.00
2,000.0	4.00	171.32	1,999.8	-6.9	1.1	-6.9	2.00	2.00	0.00
2,100.0	6.00	171.32	2,099.5	-15.5	2.4	-15.5	2.00	2.00	0.00
2,141.9	6.84	171.32	2,141.1	-20.1	3.1	-20.1	2.00	2.00	0.00
2,200.0	6.84	171.32	2,198.8	-27.0	4.1	-26.9	0.00	0.00	0.00
2,300.0	6.84	171.32	2,298.1	-38.8	5.9	-38.7	0.00	0.00	0.00
2,400.0	6.84	171.32	2,397.4	-50.5	7.7	-50.4	0.00	0.00	0.00
2,500.0	6.84	171.32	2,496.6	-62.3	9.5	-62.2	0.00	0.00	0.00
2,600.0	6.84	171.32	2,595.9	-74.1	11.3	-73.9	0.00	0.00	0.00
2,700.0	6.84	171.32	2,695.2	-85.8	13.1	-85.7	0.00	0.00	0.00
2,800.0	6.84	171.32	2,794.5	-97.6	14.9	-97.4	0.00	0.00	0.00
2,900.0	6.84	171.32	2,893.8	-109.4	16.7	-109.2	0.00	0.00	0.00
3,000.0	6.84	171.32	2,993.1	-121.1	18.5	-120.9	0.00	0.00	0.00
3,100.0	6.84	171.32	3,092.4	-132.9	20.3	-132.7	0.00	0.00	0.00
3,200.0	6.84	171.32	3,191.7	-144.7	22.1	-144.4	0.00	0.00	0.00
3,300.0	6.84	171.32	3,291.0	-156.4	23.9	-156.1	0.00	0.00	0.00
3,400.0	6.84	171.32	3,390.2	-168.2	25.7	-167.9	0.00	0.00	0.00
3,500.0	6.84	171.32	3,489.5	-180.0	27.5	-179.6	0.00	0.00	0.00
3,600.0	6.84	171.32	3,588.8	-191.7	29.3	-191.4	0.00	0.00	0.00
3,670.6	6.84	171.32	3,658.9	-200.1	30.5	-199.7	0.00	0.00	0.00
Start Drop -2.00									
3,700.0	6.25	171.32	3,688.1	-203.4	31.0	-203.0	2.00	-2.00	0.00
3,800.0	4.25	171.32	3,787.7	-212.4	32.4	-212.0	2.00	-2.00	0.00
3,900.0	2.25	171.32	3,887.5	-218.0	33.3	-217.6	2.00	-2.00	0.00
4,000.0	0.25	171.32	3,987.5	-220.2	33.6	-219.8	2.00	-2.00	0.00
4,012.5	0.00	0.00	4,000.0	-220.2	33.6	-219.8	2.00	-2.00	0.00
4,100.0	0.00	0.00	4,087.5	-220.2	33.6	-219.8	0.00	0.00	0.00
4,200.0	0.00	0.00	4,187.5	-220.2	33.6	-219.8	0.00	0.00	0.00
4,300.0	0.00	0.00	4,287.5	-220.2	33.6	-219.8	0.00	0.00	0.00
4,400.0	0.00	0.00	4,387.5	-220.2	33.6	-219.8	0.00	0.00	0.00
4,500.0	0.00	0.00	4,487.5	-220.2	33.6	-219.8	0.00	0.00	0.00
4,600.0	0.00	0.00	4,587.5	-220.2	33.6	-219.8	0.00	0.00	0.00
4,700.0	0.00	0.00	4,687.5	-220.2	33.6	-219.8	0.00	0.00	0.00
4,800.0	0.00	0.00	4,787.5	-220.2	33.6	-219.8	0.00	0.00	0.00

Database:	landmark	Local Co-ordinate Reference:	Well Meehl 01N-65W-24-4N
Company:	Verdad Oil & Gas Corporation	TVD Reference:	WELL @ 5038.5ft (RKB - 16.5')
Project:	SEC.24-T1N-R65W	MD Reference:	WELL @ 5038.5ft (RKB - 16.5')
Site:	Meehl 01N-65W-24 Pad Sec.24-T01N-R65W	North Reference:	True
Well:	Meehl 01N-65W-24-4N	Survey Calculation Method:	Minimum Curvature
Wellbore:	Wellbore #1		
Design:	Plan #1 (10-17-14)		

Planned Survey									
Measured Depth (ft)	Inclination (°)	Azimuth (°)	Vertical Depth (ft)	+N/-S (ft)	+E/-W (ft)	Vertical Section (ft)	Dogleg Rate (°/100ft)	Build Rate (°/100ft)	Turn Rate (°/100ft)
4,900.0	0.00	0.00	4,887.5	-220.2	33.6	-219.8	0.00	0.00	0.00
5,000.0	0.00	0.00	4,987.5	-220.2	33.6	-219.8	0.00	0.00	0.00
5,100.0	0.00	0.00	5,087.5	-220.2	33.6	-219.8	0.00	0.00	0.00
5,200.0	0.00	0.00	5,187.5	-220.2	33.6	-219.8	0.00	0.00	0.00
5,300.0	0.00	0.00	5,287.5	-220.2	33.6	-219.8	0.00	0.00	0.00
5,400.0	0.00	0.00	5,387.5	-220.2	33.6	-219.8	0.00	0.00	0.00
5,500.0	0.00	0.00	5,487.5	-220.2	33.6	-219.8	0.00	0.00	0.00
5,600.0	0.00	0.00	5,587.5	-220.2	33.6	-219.8	0.00	0.00	0.00
5,700.0	0.00	0.00	5,687.5	-220.2	33.6	-219.8	0.00	0.00	0.00
5,800.0	0.00	0.00	5,787.5	-220.2	33.6	-219.8	0.00	0.00	0.00
5,900.0	0.00	0.00	5,887.5	-220.2	33.6	-219.8	0.00	0.00	0.00
6,000.0	0.00	0.00	5,987.5	-220.2	33.6	-219.8	0.00	0.00	0.00
6,100.0	0.00	0.00	6,087.5	-220.2	33.6	-219.8	0.00	0.00	0.00
6,200.0	0.00	0.00	6,187.5	-220.2	33.6	-219.8	0.00	0.00	0.00
6,300.0	0.00	0.00	6,287.5	-220.2	33.6	-219.8	0.00	0.00	0.00
6,400.0	0.00	0.00	6,387.5	-220.2	33.6	-219.8	0.00	0.00	0.00
6,500.0	0.00	0.00	6,487.5	-220.2	33.6	-219.8	0.00	0.00	0.00
6,600.0	0.00	0.00	6,587.5	-220.2	33.6	-219.8	0.00	0.00	0.00
6,605.3	0.00	0.00	6,592.8	-220.2	33.6	-219.8	0.00	0.00	0.00
KOP #2 - Start Build 11.00									
6,700.0	10.42	0.24	6,687.0	-211.6	33.6	-211.2	11.00	11.00	0.00
6,800.0	21.42	0.24	6,783.0	-184.2	33.8	-183.8	11.00	11.00	0.00
6,900.0	32.42	0.24	6,872.0	-139.0	33.9	-138.6	11.00	11.00	0.00
7,000.0	43.42	0.24	6,950.8	-77.7	34.2	-77.3	11.00	11.00	0.00
7,100.0	54.42	0.24	7,016.4	-2.4	34.5	-2.0	11.00	11.00	0.00
7,200.0	65.42	0.24	7,066.5	84.0	34.9	84.4	11.00	11.00	0.00
7,300.0	76.42	0.24	7,099.1	178.3	35.3	178.7	11.00	11.00	0.00
7,400.0	87.42	0.24	7,113.1	277.2	35.7	277.6	11.00	11.00	0.00
7,425.9	90.27	0.24	7,113.7	303.1	35.8	303.5	11.00	11.00	0.00
7"									
7,500.0	90.27	0.24	7,113.3	377.2	36.1	377.6	0.01	0.01	0.00
7,600.0	90.27	0.24	7,112.9	477.2	36.5	477.6	0.00	0.00	0.00
7,700.0	90.27	0.24	7,112.4	577.2	36.9	577.6	0.00	0.00	0.00
7,800.0	90.27	0.24	7,111.9	677.2	37.4	677.6	0.00	0.00	0.00
7,900.0	90.27	0.24	7,111.4	777.2	37.8	777.6	0.00	0.00	0.00
8,000.0	90.27	0.24	7,111.0	877.2	38.2	877.6	0.00	0.00	0.00
8,100.0	90.27	0.24	7,110.5	977.2	38.6	977.6	0.00	0.00	0.00
8,200.0	90.27	0.24	7,110.0	1,077.2	39.0	1,077.6	0.00	0.00	0.00
8,300.0	90.27	0.24	7,109.6	1,177.2	39.5	1,177.5	0.00	0.00	0.00
8,400.0	90.27	0.24	7,109.1	1,277.2	39.9	1,277.5	0.00	0.00	0.00
8,500.0	90.27	0.24	7,108.6	1,377.2	40.3	1,377.5	0.00	0.00	0.00
8,600.0	90.27	0.24	7,108.1	1,477.2	40.7	1,477.5	0.00	0.00	0.00
8,700.0	90.27	0.24	7,107.7	1,577.2	41.1	1,577.5	0.00	0.00	0.00
8,800.0	90.27	0.24	7,107.2	1,677.2	41.6	1,677.5	0.00	0.00	0.00
8,900.0	90.27	0.24	7,106.7	1,777.2	42.0	1,777.5	0.00	0.00	0.00
9,000.0	90.27	0.24	7,106.3	1,877.2	42.4	1,877.5	0.00	0.00	0.00
9,100.0	90.27	0.24	7,105.8	1,977.2	42.8	1,977.5	0.00	0.00	0.00
9,200.0	90.27	0.24	7,105.3	2,077.1	43.2	2,077.5	0.00	0.00	0.00
9,300.0	90.27	0.24	7,104.8	2,177.1	43.7	2,177.5	0.00	0.00	0.00
9,400.0	90.27	0.24	7,104.4	2,277.1	44.1	2,277.5	0.00	0.00	0.00
9,500.0	90.27	0.24	7,103.9	2,377.1	44.5	2,377.5	0.00	0.00	0.00
9,600.0	90.27	0.24	7,103.4	2,477.1	44.9	2,477.5	0.00	0.00	0.00
9,700.0	90.27	0.24	7,103.0	2,577.1	45.3	2,577.5	0.00	0.00	0.00
9,800.0	90.27	0.24	7,102.5	2,677.1	45.8	2,677.5	0.00	0.00	0.00

Database: landmark
Company: Verdad Oil & Gas Corporation
Project: SEC.24-T1N-R65W
Site: Meehl 01N-65W-24 Pad Sec.24-T01N-R65W
Well: Meehl 01N-65W-24-4N
Wellbore: Wellbore #1
Design: Plan #1 (10-17-14)

Local Co-ordinate Reference: Well Meehl 01N-65W-24-4N
TVD Reference: WELL @ 5038.5ft (RKB - 16.5')
MD Reference: WELL @ 5038.5ft (RKB - 16.5')
North Reference: True
Survey Calculation Method: Minimum Curvature

Planned Survey										
Measured Depth (ft)	Inclination (°)	Azimuth (°)	Vertical Depth (ft)	+N/-S (ft)	+E/-W (ft)	Vertical Section (ft)	Dogleg Rate (°/100ft)	Build Rate (°/100ft)	Turn Rate (°/100ft)	
9,900.0	90.27	0.24	7,102.0	2,777.1	46.2	2,777.5	0.00	0.00	0.00	
10,000.0	90.27	0.24	7,101.5	2,877.1	46.6	2,877.5	0.00	0.00	0.00	
10,100.0	90.27	0.24	7,101.1	2,977.1	47.0	2,977.5	0.00	0.00	0.00	
10,200.0	90.27	0.24	7,100.6	3,077.1	47.4	3,077.5	0.00	0.00	0.00	
10,300.0	90.27	0.24	7,100.1	3,177.1	47.9	3,177.5	0.00	0.00	0.00	
10,400.0	90.27	0.24	7,099.7	3,277.1	48.3	3,277.5	0.00	0.00	0.00	
10,500.0	90.27	0.24	7,099.2	3,377.1	48.7	3,377.5	0.00	0.00	0.00	
10,600.0	90.27	0.24	7,098.7	3,477.1	49.1	3,477.5	0.00	0.00	0.00	
10,700.0	90.27	0.24	7,098.2	3,577.1	49.5	3,577.5	0.00	0.00	0.00	
10,800.0	90.27	0.24	7,097.8	3,677.1	50.0	3,677.5	0.00	0.00	0.00	
10,900.0	90.27	0.24	7,097.3	3,777.1	50.4	3,777.4	0.00	0.00	0.00	
11,000.0	90.27	0.24	7,096.8	3,877.1	50.8	3,877.4	0.00	0.00	0.00	
11,100.0	90.27	0.24	7,096.4	3,977.1	51.2	3,977.4	0.00	0.00	0.00	
11,200.0	90.27	0.24	7,095.9	4,077.1	51.6	4,077.4	0.00	0.00	0.00	
11,300.0	90.27	0.24	7,095.4	4,177.1	52.1	4,177.4	0.00	0.00	0.00	
11,400.0	90.27	0.24	7,094.9	4,277.1	52.5	4,277.4	0.00	0.00	0.00	
11,500.0	90.27	0.24	7,094.5	4,377.1	52.9	4,377.4	0.00	0.00	0.00	
11,600.0	90.27	0.24	7,094.0	4,477.1	53.3	4,477.4	0.00	0.00	0.00	
11,700.0	90.27	0.24	7,093.5	4,577.1	53.7	4,577.4	0.00	0.00	0.00	
11,706.4	90.27	0.24	7,093.5	4,583.5	53.8	4,583.8	0.00	0.00	0.00	

Targets										
Target Name	Dip Angle (°)	Dip Dir. (°)	TVD (ft)	+N/-S (ft)	+E/-W (ft)	Northing (ft)	Easting (ft)	Latitude	Longitude	
- hit/miss target										
- Shape										
Sectionline	0.00	0.00	1.0	-270.4	-745.1	1,254,859.18	3,248,966.97	40.029550	-104.610920	
- plan misses by 792.6ft at 1.0ft MD (1.0 TVD, 0.0 N, 0.0 E)										
- Polygon										
Point 1			1.0	0.0	0.0	1,254,859.18	3,248,966.97			
Point 2			1.0	0.0	2,000.0	1,254,879.29	3,250,966.79			
460' Setback BHL	0.00	0.00	1.0	4,585.3	-745.1	1,259,714.45	3,248,918.15	40.042879	-104.610920	
- plan misses by 4645.5ft at 1.0ft MD (1.0 TVD, 0.0 N, 0.0 E)										
- Polygon										
Point 1			1.0	0.0	0.0	1,259,714.45	3,248,918.15			
Point 2			1.0	0.0	2,000.0	1,259,734.57	3,250,917.97			
460' Setback SHL	0.00	0.00	1.0	189.6	-745.1	1,255,319.14	3,248,962.34	40.030813	-104.610920	
- plan misses by 768.8ft at 1.0ft MD (1.0 TVD, 0.0 N, 0.0 E)										
- Polygon										
Point 1			1.0	0.0	0.0	1,255,319.14	3,248,962.34			
Point 2			1.0	0.0	2,000.0	1,255,339.25	3,250,962.16			
BHL 460'FNL & 1485'	0.00	0.00	7,093.5	4,583.5	53.8	1,259,720.64	3,249,716.93	40.042874	-104.608067	
- plan hits target										
- Point										
SHL 270'FSL & 1518'	0.00	0.00	1.0	0.0	0.0	1,255,137.02	3,249,709.27	40.030292	-104.608259	
- plan hits target										
- Point										

Database:	landmark	Local Co-ordinate Reference:	Well Meehl 01N-65W-24-4N
Company:	Verdad Oil & Gas Corporation	TVD Reference:	WELL @ 5038.5ft (RKB - 16.5')
Project:	SEC.24-T1N-R65W	MD Reference:	WELL @ 5038.5ft (RKB - 16.5')
Site:	Meehl 01N-65W-24 Pad Sec.24-T01N-R65W	North Reference:	True
Well:	Meehl 01N-65W-24-4N	Survey Calculation Method:	Minimum Curvature
Wellbore:	Wellbore #1		
Design:	Plan #1 (10-17-14)		

Casing Points					
Measured Depth (ft)	Vertical Depth (ft)	Name	Casing Diameter (")	Hole Diameter (")	
7,425.9	7,113.7	7"	7	7-1/2	

Plan Annotations					
Measured Depth (ft)	Vertical Depth (ft)	Local Coordinates			
		+N/-S (ft)	+E/-W (ft)	Comment	
1,800.0	1,800.0	0.0	0.0	KOP - Start Build 2.00	
3,670.6	3,658.9	-200.1	30.5	Start Drop -2.00	
6,605.3	6,592.8	-220.2	33.6	KOP #2 - Start Build 11.00	
11,706.4	7,093.5	4,583.5	53.8	TD at 11706.4	



Verdad Oil & Gas Corporation

SEC.24-T1N-R65W

Meehl 01N-65W-24 Pad Sec.24-T01N-R65W

Meehl 01N-65W-24-4N

Wellbore #1

Plan #1 (10-17-14)

Anticollision Report

20 October, 2014

Company:	Verdad Oil & Gas Corporation	Local Co-ordinate Reference:	Well Meehl 01N-65W-24-4N
Project:	SEC.24-T1N-R65W	TVD Reference:	WELL @ 5038.5ft (RKB - 16.5')
Reference Site:	Meehl 01N-65W-24 Pad Sec.24-T01N-R65W	MD Reference:	WELL @ 5038.5ft (RKB - 16.5')
Site Error:	0.0ft	North Reference:	True
Reference Well:	Meehl 01N-65W-24-4N	Survey Calculation Method:	Minimum Curvature
Well Error:	0.0ft	Output errors are at	2.00 sigma
Reference Wellbore	Wellbore #1	Database:	landmark
Reference Design:	Plan #1 (10-17-14)	Offset TVD Reference:	Offset Datum

Reference	Plan #1 (10-17-14)		
Filter type:	NO GLOBAL FILTER: Using user defined selection & filtering criteria		
Interpolation Method:	MD Interval 100.0ft	Error Model:	ISCSWA
Depth Range:	Unlimited	Scan Method:	Closest Approach 3D
Results Limited by:	Maximum center-center distance of 1,000.0ft	Error Surface:	Elliptical Conic
Warning Levels Evaluated at:	2.00 Sigma		

Survey Tool Program		Date	10/20/2014		
From (ft)	To (ft)	Survey (Wellbore)	Tool Name	Description	
0.0	11,706.4	Plan #1 (10-17-14) (Wellbore #1)	MWD	MWD - Standard	

Summary							
Site Name	Reference Measured Depth (ft)	Offset Measured Depth (ft)	Distance Between Centres (ft)	Distance Between Ellipses (ft)	Separation Factor	Warning	
Offset Well - Wellbore - Design							
Meehl 01N-65W-24 Pad Sec.24-T01N-R65W							
Meehl 01N-65W-24-1C - Wellbore #1 - Plan #1 (10-17-14	200.0	200.0	45.1	44.4	66.866	CC, ES	
Meehl 01N-65W-24-1C - Wellbore #1 - Plan #1 (10-17-14	11,707.1	11,924.9	535.8	368.0	3.192	SF	
Meehl 01N-65W-24-2N - Wellbore #1 - Plan #1 (10-17-14	1,000.0	1,000.0	30.0	25.7	7.016	CC, ES	
Meehl 01N-65W-24-2N - Wellbore #1 - Plan #1 (10-17-14	11,707.1	11,717.3	329.8	150.3	1.837	SF	
Meehl 01N-65W-24-3N - Wellbore #1 - Plan #1 (10-17-14	1,600.0	1,600.0	15.1	8.2	2.171	CC	
Meehl 01N-65W-24-3N - Wellbore #1 - Plan #1 (10-17-14	11,707.1	11,709.2	164.9	-14.7	0.918	Level 1, ES, SF	
Meehl 01N-65W-24-5C - Wellbore #1 - Plan #1 (10-17-14	1,914.7	1,914.7	14.9	6.6	1.791	CC, ES, SF	
Meehl 01N-65W-24-6N - Wellbore #1 - Plan #1 (10-17-14	1,400.0	1,400.0	30.0	23.9	4.938	CC, ES	
Meehl 01N-65W-24-6N - Wellbore #1 - Plan #1 (10-17-14	11,707.1	11,719.2	330.1	150.6	1.839	SF	
Meehl 01N-65W-24-7N - Wellbore #1 - Plan #1 (10-17-14	1,200.0	1,200.0	45.1	39.9	8.721	CC, ES	
Meehl 01N-65W-24-7N - Wellbore #1 - Plan #1 (10-17-14	11,707.1	11,735.4	495.0	315.4	2.756	SF	
Meehl 01N-65W-24-8N - Wellbore #1 - Plan #1 (10-17-14	600.0	600.0	59.9	57.5	24.239	CC, ES	
Meehl 01N-65W-24-8N - Wellbore #1 - Plan #1 (10-17-14	11,707.1	11,757.6	660.2	480.6	3.676	SF	
Meehl 01N-65W-24-9C - Wellbore #1 - Plan #1 (10-17-14	200.0	200.0	75.1	74.4	111.302	CC, ES	
Meehl 01N-65W-24-9C - Wellbore #1 - Plan #1 (10-17-14	11,707.1	12,033.7	850.2	675.6	4.868	SF	

Offset Design												Offset Site Error:	0.0 ft
Survey Program: 0-MWD												Offset Well Error:	0.0 ft
Reference		Offset		Semi Major Axis			Distance						
Measured Depth	Vertical Depth	Measured Depth	Vertical Depth	Reference	Offset	Highside Toolface	Offset Wellbore Centre		Between Centres	Between Ellipses	Minimum Separation	Separation Factor	Warning
Depth (ft)	Depth (ft)	Depth (ft)	Depth (ft)	(ft)	(ft)	(°)	+N/-S (ft)	+E/-W (ft)	(ft)	(ft)	(ft)		
0.0	0.0	0.0	0.0	0.0	0.0	-90.46	-0.4	-45.1	45.1				
100.0	100.0	100.0	100.0	0.1	0.1	-90.46	-0.4	-45.1	45.1	44.9	0.22	200.599	
200.0	200.0	200.0	200.0	0.3	0.3	-90.46	-0.4	-45.1	45.1	44.4	0.67	66.866 CC, ES	
300.0	300.0	298.6	298.6	0.6	0.5	-91.42	-1.2	-46.6	46.6	45.5	1.11	42.177	
400.0	400.0	396.9	396.8	0.8	0.8	-93.95	-3.5	-51.1	51.3	49.7	1.54	33.230	
500.0	500.0	494.8	494.3	1.0	1.0	-97.27	-7.5	-58.5	59.2	57.2	2.00	29.643	
600.0	600.0	592.8	591.6	1.2	1.3	-100.60	-12.9	-68.7	70.4	67.9	2.47	28.531	
700.0	700.0	692.0	690.0	1.5	1.6	-103.19	-18.7	-79.6	82.4	79.5	2.93	28.153	
800.0	800.0	791.2	788.5	1.7	1.9	-105.11	-24.5	-90.6	94.5	91.2	3.39	27.906	
900.0	900.0	890.4	886.9	1.9	2.2	-106.60	-30.3	-101.5	106.8	102.9	3.85	27.731	
1,000.0	1,000.0	989.7	985.3	2.1	2.5	-107.78	-36.1	-112.5	119.1	114.7	4.31	27.602	
1,100.0	1,100.0	1,088.9	1,083.8	2.4	2.9	-108.74	-41.9	-123.5	131.4	126.6	4.78	27.502	
1,200.0	1,200.0	1,188.1	1,182.2	2.6	3.2	-109.53	-47.7	-134.4	143.7	138.5	5.24	27.425	

CC - Min centre to center distance or convergent point, SF - min separation factor, ES - min ellipse separation

Company:	Verdad Oil & Gas Corporation	Local Co-ordinate Reference:	Well Meehl 01N-65W-24-4N
Project:	SEC.24-T1N-R65W	TVD Reference:	WELL @ 5038.5ft (RKB - 16.5')
Reference Site:	Meehl 01N-65W-24 Pad Sec.24-T01N-R65W	MD Reference:	WELL @ 5038.5ft (RKB - 16.5')
Site Error:	0.0ft	North Reference:	True
Reference Well:	Meehl 01N-65W-24-4N	Survey Calculation Method:	Minimum Curvature
Well Error:	0.0ft	Output errors are at	2.00 sigma
Reference Wellbore	Wellbore #1	Database:	landmark
Reference Design:	Plan #1 (10-17-14)	Offset TVD Reference:	Offset Datum

Offset Design												Offset Site Error:	0.0 ft
Survey Program: 0-MWD												Offset Well Error:	0.0 ft
Reference		Offset		Semi Major Axis			Distance						Warning
Measured Depth (ft)	Vertical Depth (ft)	Measured Depth (ft)	Vertical Depth (ft)	Reference (ft)	Offset (ft)	Highside Toolface (°)	Offset Wellbore Centre +N/-S (ft)	+E/-W (ft)	Between Centres (ft)	Between Ellipses (ft)	Minimum Separation (ft)	Separation Factor	
1,300.0	1,300.0	1,287.3	1,280.7	2.8	3.5	-110.20	-53.5	-145.4	156.1	150.4	5.71	27.362	
1,400.0	1,400.0	1,386.5	1,379.1	3.0	3.8	-110.77	-59.3	-156.3	168.5	162.3	6.17	27.311	
1,500.0	1,500.0	1,485.7	1,477.5	3.3	4.2	-111.26	-65.1	-167.3	180.9	174.3	6.63	27.268	
1,600.0	1,600.0	1,585.0	1,576.0	3.5	4.5	-111.69	-70.9	-178.3	193.3	186.2	7.10	27.231	
1,700.0	1,700.0	1,684.2	1,674.4	3.7	4.8	-112.07	-76.7	-189.2	205.8	198.2	7.56	27.200	
1,800.0	1,800.0	1,783.4	1,772.9	3.9	5.1	-112.40	-82.5	-200.2	218.2	210.2	8.03	27.174	
1,900.0	1,900.0	1,882.7	1,871.3	4.1	5.5	76.16	-88.3	-211.1	230.2	221.8	8.39	27.441	
2,000.0	1,999.8	1,981.9	1,969.9	4.3	5.8	76.87	-94.1	-222.1	241.5	232.7	8.81	27.421	
2,100.0	2,099.5	2,081.1	2,068.3	4.5	6.1	78.27	-99.9	-233.1	252.0	242.8	9.24	27.285	
2,200.0	2,198.8	2,180.2	2,166.5	4.7	6.4	80.29	-105.7	-244.0	262.3	252.6	9.69	27.065	
2,300.0	2,298.1	2,279.2	2,264.7	4.9	6.8	82.30	-111.5	-254.9	272.8	262.7	10.16	26.843	
2,400.0	2,397.4	2,378.2	2,363.0	5.1	7.1	84.16	-117.3	-265.9	283.7	273.0	10.65	26.628	
2,500.0	2,496.6	2,477.2	2,461.2	5.3	7.4	85.88	-123.1	-276.8	294.8	283.7	11.16	26.422	
2,600.0	2,595.9	2,576.2	2,559.4	5.6	7.7	87.48	-128.9	-287.7	306.2	294.5	11.68	26.227	
2,700.0	2,695.2	2,675.2	2,657.6	5.8	8.1	88.96	-134.7	-298.7	317.8	305.6	12.20	26.043	
2,800.0	2,794.5	2,774.2	2,755.9	6.1	8.4	90.33	-140.5	-309.6	329.6	316.8	12.74	25.870	
2,900.0	2,893.8	2,873.2	2,854.1	6.3	8.7	91.61	-146.3	-320.5	341.6	328.3	13.29	25.708	
3,000.0	2,993.1	2,972.2	2,952.3	6.6	9.1	92.81	-152.1	-331.5	353.7	339.8	13.84	25.558	
3,100.0	3,092.4	3,071.2	3,050.5	6.9	9.4	93.92	-157.9	-342.4	365.9	351.5	14.40	25.418	
3,200.0	3,191.7	3,170.2	3,148.8	7.1	9.7	94.96	-163.7	-353.3	378.3	363.4	14.96	25.288	
3,300.0	3,291.0	3,269.2	3,247.0	7.4	10.0	95.94	-169.5	-364.3	390.8	375.3	15.53	25.168	
3,400.0	3,390.2	3,368.2	3,345.2	7.7	10.4	96.85	-175.3	-375.2	403.5	387.4	16.10	25.056	
3,500.0	3,489.5	3,467.2	3,443.4	8.0	10.7	97.71	-181.0	-386.1	416.2	399.5	16.68	24.953	
3,600.0	3,588.8	3,566.2	3,541.6	8.3	11.0	98.52	-186.8	-397.1	429.0	411.7	17.26	24.858	
3,700.0	3,688.1	3,665.2	3,639.9	8.6	11.3	99.34	-192.6	-408.0	441.8	424.0	17.84	24.770	
3,800.0	3,787.7	3,764.4	3,738.3	8.8	11.7	99.96	-198.4	-419.0	454.3	435.9	18.37	24.721	
3,900.0	3,887.5	3,863.6	3,836.8	9.0	12.0	100.13	-204.2	-429.9	466.2	447.3	18.87	24.703	
4,000.0	3,987.5	3,962.9	3,935.3	9.2	12.3	99.87	-210.1	-440.9	477.5	458.1	19.33	24.702	
4,100.0	4,087.5	4,078.4	4,050.1	9.4	12.6	-89.49	-215.8	-451.8	486.9	467.2	19.71	24.708	
4,200.0	4,187.5	4,195.9	4,167.4	9.6	12.8	-89.92	-219.5	-458.8	492.8	472.7	20.08	24.543	
4,300.0	4,287.5	4,313.9	4,285.3	9.8	13.0	-90.09	-220.9	-461.5	495.1	474.6	20.45	24.207	
4,400.0	4,387.5	4,416.1	4,387.5	10.0	13.1	-90.09	-221.0	-461.5	495.1	474.3	20.82	23.782	
4,500.0	4,487.5	4,516.1	4,487.5	10.2	13.3	-90.09	-221.0	-461.5	495.1	473.9	21.18	23.379	
4,600.0	4,587.5	4,616.1	4,587.5	10.4	13.4	-90.09	-221.0	-461.5	495.1	473.5	21.54	22.987	
4,700.0	4,687.5	4,716.1	4,687.5	10.6	13.6	-90.09	-221.0	-461.5	495.1	473.2	21.90	22.604	
4,800.0	4,787.5	4,816.1	4,787.5	10.8	13.7	-90.09	-221.0	-461.5	495.1	472.8	22.27	22.231	
4,900.0	4,887.5	4,916.1	4,887.5	11.0	13.9	-90.09	-221.0	-461.5	495.1	472.4	22.64	21.867	
5,000.0	4,987.5	5,016.1	4,987.5	11.2	14.0	-90.09	-221.0	-461.5	495.1	472.1	23.01	21.512	
5,100.0	5,087.5	5,116.1	5,087.5	11.4	14.2	-90.09	-221.0	-461.5	495.1	471.7	23.39	21.166	
5,200.0	5,187.5	5,216.1	5,187.5	11.6	14.3	-90.09	-221.0	-461.5	495.1	471.3	23.77	20.829	
5,300.0	5,287.5	5,316.1	5,287.5	11.8	14.5	-90.09	-221.0	-461.5	495.1	470.9	24.15	20.500	
5,400.0	5,387.5	5,416.1	5,387.5	12.0	14.6	-90.09	-221.0	-461.5	495.1	470.6	24.53	20.180	
5,500.0	5,487.5	5,516.1	5,487.5	12.2	14.8	-90.09	-221.0	-461.5	495.1	470.2	24.92	19.868	
5,600.0	5,587.5	5,616.1	5,587.5	12.4	15.0	-90.09	-221.0	-461.5	495.1	469.8	25.31	19.563	
5,700.0	5,687.5	5,716.1	5,687.5	12.6	15.1	-90.09	-221.0	-461.5	495.1	469.4	25.70	19.267	
5,800.0	5,787.5	5,816.1	5,787.5	12.8	15.3	-90.09	-221.0	-461.5	495.1	469.0	26.09	18.978	
5,900.0	5,887.5	5,916.1	5,887.5	13.0	15.5	-90.09	-221.0	-461.5	495.1	468.6	26.48	18.696	
6,000.0	5,987.5	6,016.1	5,987.5	13.2	15.6	-90.09	-221.0	-461.5	495.1	468.2	26.88	18.421	
6,100.0	6,087.5	6,116.1	6,087.5	13.4	15.8	-90.09	-221.0	-461.5	495.1	467.8	27.27	18.153	
6,200.0	6,187.5	6,216.1	6,187.5	13.6	16.0	-90.09	-221.0	-461.5	495.1	467.4	27.67	17.892	
6,300.0	6,287.5	6,316.1	6,287.5	13.8	16.2	-90.09	-221.0	-461.5	495.1	467.0	28.07	17.637	
6,400.0	6,387.5	6,416.1	6,387.5	14.0	16.3	-90.09	-221.0	-461.5	495.1	466.6	28.47	17.388	

CC - Min centre to center distance or convergent point, SF - min separation factor, ES - min ellipse separation

Company:	Verdad Oil & Gas Corporation	Local Co-ordinate Reference:	Well Meehl 01N-65W-24-4N
Project:	SEC.24-T1N-R65W	TVD Reference:	WELL @ 5038.5ft (RKB - 16.5')
Reference Site:	Meehl 01N-65W-24 Pad Sec.24-T01N-R65W	MD Reference:	WELL @ 5038.5ft (RKB - 16.5')
Site Error:	0.0ft	North Reference:	True
Reference Well:	Meehl 01N-65W-24-4N	Survey Calculation Method:	Minimum Curvature
Well Error:	0.0ft	Output errors are at	2.00 sigma
Reference Wellbore	Wellbore #1	Database:	landmark
Reference Design:	Plan #1 (10-17-14)	Offset TVD Reference:	Offset Datum

Offset Design												Offset Site Error:	0.0 ft
Survey Program: 0-MWD												Offset Well Error:	0.0 ft
Reference		Offset		Semi Major Axis			Distance						
Measured Depth (ft)	Vertical Depth (ft)	Measured Depth (ft)	Vertical Depth (ft)	Reference (ft)	Offset (ft)	Highside Toolface (°)	Offset Wellbore Centre +N/-S (ft)	+E/-W (ft)	Between Centres (ft)	Between Ellipses (ft)	Minimum Separation (ft)	Separation Factor	Warning
6,500.0	6,487.5	6,516.1	6,487.5	14.2	16.5	-90.09	-221.0	-461.5	495.1	466.2	28.88	17.146	
6,600.0	6,587.5	6,616.1	6,587.5	14.4	16.7	-90.09	-221.0	-461.5	495.1	465.8	29.28	16.909	
6,612.6	6,600.1	6,628.7	6,600.1	14.5	16.7	-90.34	-221.0	-461.5	495.1	465.8	29.33	16.878	
6,700.0	6,687.0	6,715.6	6,687.0	14.6	16.9	-91.30	-221.0	-461.5	495.2	465.6	29.62	16.719	
6,800.0	6,783.0	6,811.6	6,783.0	14.7	17.0	-94.17	-221.0	-461.5	496.6	466.8	29.80	16.664	
6,900.0	6,872.0	6,914.9	6,885.8	14.8	17.2	-98.18	-212.6	-461.5	501.0	471.2	29.84	16.787	
7,000.0	6,950.8	7,028.9	6,994.8	14.8	17.3	-102.10	-180.1	-461.3	507.9	478.1	29.76	17.064	
7,100.0	7,016.4	7,154.9	7,103.9	15.0	17.3	-105.73	-117.7	-461.1	516.3	486.6	29.62	17.428	
7,200.0	7,066.5	7,294.1	7,203.1	15.3	17.3	-108.81	-20.6	-460.6	524.6	495.0	29.59	17.725	
7,300.0	7,099.1	7,445.8	7,277.9	15.7	17.4	-111.01	110.7	-460.1	531.0	501.0	29.97	17.717	
7,400.0	7,113.1	7,605.9	7,312.4	16.4	17.8	-111.96	266.5	-459.4	533.8	502.7	31.07	17.183	
7,500.0	7,113.3	7,719.4	7,313.2	17.2	18.5	-111.98	380.0	-459.0	533.9	501.3	32.59	16.383	
7,600.0	7,112.9	7,819.4	7,312.8	18.1	19.4	-112.00	480.0	-458.5	533.9	499.6	34.35	15.542	
7,700.0	7,112.4	7,919.4	7,312.5	19.3	20.5	-112.01	580.0	-458.1	534.0	497.6	36.39	14.673	
7,800.0	7,111.9	8,019.4	7,312.1	20.5	21.6	-112.02	680.0	-457.7	534.0	495.4	38.65	13.815	
7,900.0	7,111.4	8,119.4	7,311.8	21.8	22.9	-112.03	780.0	-457.3	534.1	493.0	41.11	12.992	
8,000.0	7,111.0	8,219.4	7,311.4	23.2	24.3	-112.04	880.0	-456.9	534.1	490.4	43.72	12.218	
8,100.0	7,110.5	8,319.4	7,311.1	24.7	25.7	-112.06	980.0	-456.4	534.2	487.7	46.46	11.498	
8,200.0	7,110.0	8,419.4	7,310.7	26.3	27.2	-112.07	1,080.0	-456.0	534.2	484.9	49.30	10.835	
8,300.0	7,109.6	8,519.4	7,310.4	27.8	28.7	-112.08	1,180.0	-455.6	534.3	482.0	52.24	10.226	
8,400.0	7,109.1	8,619.4	7,310.0	29.5	30.3	-112.09	1,279.9	-455.2	534.3	479.0	55.26	9.669	
8,500.0	7,108.6	8,719.4	7,309.7	31.1	31.9	-112.11	1,379.9	-454.8	534.3	476.0	58.34	9.159	
8,600.0	7,108.1	8,819.4	7,309.3	32.8	33.6	-112.12	1,479.9	-454.3	534.4	472.9	61.47	8.693	
8,700.0	7,107.7	8,919.4	7,309.0	34.5	35.2	-112.13	1,579.9	-453.9	534.4	469.8	64.66	8.266	
8,800.0	7,107.2	9,019.4	7,308.6	36.2	36.9	-112.14	1,679.9	-453.5	534.5	466.6	67.88	7.874	
8,900.0	7,106.7	9,119.4	7,308.3	38.0	38.6	-112.15	1,779.9	-453.1	534.5	463.4	71.13	7.514	
9,000.0	7,106.3	9,219.4	7,307.9	39.7	40.4	-112.17	1,879.9	-452.6	534.6	460.1	74.42	7.183	
9,100.0	7,105.8	9,319.4	7,307.6	41.5	42.1	-112.18	1,979.9	-452.2	534.6	456.9	77.73	6.878	
9,200.0	7,105.3	9,419.4	7,307.2	43.3	43.9	-112.19	2,079.9	-451.8	534.7	453.6	81.06	6.596	
9,300.0	7,104.8	9,519.4	7,306.9	45.1	45.7	-112.20	2,179.9	-451.4	534.7	450.3	84.42	6.334	
9,400.0	7,104.4	9,619.4	7,306.5	46.9	47.4	-112.22	2,279.9	-451.0	534.7	447.0	87.79	6.091	
9,500.0	7,103.9	9,719.4	7,306.2	48.7	49.2	-112.23	2,379.9	-450.5	534.8	443.6	91.17	5.866	
9,600.0	7,103.4	9,819.4	7,305.8	50.6	51.0	-112.24	2,479.9	-450.1	534.8	440.3	94.58	5.655	
9,700.0	7,103.0	9,919.4	7,305.5	52.4	52.8	-112.25	2,579.9	-449.7	534.9	436.9	97.99	5.459	
9,800.0	7,102.5	10,019.4	7,305.2	54.2	54.7	-112.26	2,679.9	-449.3	534.9	433.5	101.41	5.275	
9,900.0	7,102.0	10,119.4	7,304.8	56.1	56.5	-112.28	2,779.9	-448.9	535.0	430.1	104.85	5.102	
10,000.0	7,101.5	10,219.4	7,304.5	57.9	58.3	-112.29	2,879.9	-448.4	535.0	426.7	108.29	4.941	
10,100.0	7,101.1	10,319.4	7,304.1	59.8	60.2	-112.30	2,979.9	-448.0	535.1	423.3	111.74	4.788	
10,200.0	7,100.6	10,419.4	7,303.8	61.6	62.0	-112.31	3,079.9	-447.6	535.1	419.9	115.20	4.645	
10,300.0	7,100.1	10,519.4	7,303.4	63.5	63.8	-112.32	3,179.9	-447.2	535.2	416.5	118.66	4.510	
10,400.0	7,099.7	10,619.4	7,303.1	65.3	65.7	-112.34	3,279.9	-446.8	535.2	413.1	122.14	4.382	
10,500.0	7,099.2	10,719.4	7,302.7	67.2	67.5	-112.35	3,379.9	-446.3	535.2	409.6	125.61	4.261	
10,600.0	7,098.7	10,819.4	7,302.4	69.1	69.4	-112.36	3,479.9	-445.9	535.3	406.2	129.09	4.147	
10,700.0	7,098.2	10,919.4	7,302.0	70.9	71.3	-112.37	3,579.9	-445.5	535.3	402.8	132.58	4.038	
10,800.0	7,097.8	11,019.4	7,301.7	72.8	73.1	-112.39	3,679.9	-445.1	535.4	399.3	136.07	3.935	
10,900.0	7,097.3	11,119.4	7,301.3	74.7	75.0	-112.40	3,779.9	-444.7	535.4	395.9	139.56	3.836	
11,000.0	7,096.8	11,219.4	7,301.0	76.5	76.8	-112.41	3,879.9	-444.2	535.5	392.4	143.06	3.743	
11,100.0	7,096.4	11,319.4	7,300.6	78.4	78.7	-112.42	3,979.9	-443.8	535.5	389.0	146.56	3.654	
11,200.0	7,095.9	11,419.4	7,300.3	80.3	80.6	-112.43	4,079.9	-443.4	535.6	385.5	150.06	3.569	
11,300.0	7,095.4	11,519.4	7,299.9	82.2	82.5	-112.45	4,179.9	-443.0	535.6	382.0	153.57	3.488	
11,400.0	7,094.9	11,619.4	7,299.6	84.1	84.3	-112.46	4,279.9	-442.6	535.7	378.6	157.08	3.410	
11,500.0	7,094.5	11,719.4	7,299.2	85.9	86.2	-112.47	4,379.9	-442.1	535.7	375.1	160.59	3.336	

CC - Min centre to center distance or convergent point, SF - min separation factor, ES - min ellipse separation

Company:	Verdad Oil & Gas Corporation	Local Co-ordinate Reference:	Well Meehl 01N-65W-24-4N
Project:	SEC.24-T1N-R65W	TVD Reference:	WELL @ 5038.5ft (RKB - 16.5')
Reference Site:	Meehl 01N-65W-24 Pad Sec.24-T01N-R65W	MD Reference:	WELL @ 5038.5ft (RKB - 16.5')
Site Error:	0.0ft	North Reference:	True
Reference Well:	Meehl 01N-65W-24-4N	Survey Calculation Method:	Minimum Curvature
Well Error:	0.0ft	Output errors are at	2.00 sigma
Reference Wellbore	Wellbore #1	Database:	landmark
Reference Design:	Plan #1 (10-17-14)	Offset TVD Reference:	Offset Datum

Offset Design Meehl 01N-65W-24 Pad Sec.24-T01N-R65W - Meehl 01N-65W-24-1C - Wellbore #1 - Plan #1 (10-17-1													Offset Site Error:	0.0 ft
Survey Program: 0-MWD													Offset Well Error:	0.0 ft
Reference	Offset	Semi Major Axis			Distance									Warning
Measured Depth (ft)	Vertical Depth (ft)	Measured Depth (ft)	Vertical Depth (ft)	Reference (ft)	Offset (ft)	Highside Toolface (°)	Offset Wellbore Centre +N/-S (ft)	+E/-W (ft)	Between Centres (ft)	Between Ellipses (ft)	Minimum Separation (ft)	Separation Factor		
11,600.0	7,094.0	11,819.4	7,298.9	87.8	88.1	-112.48	4,479.9	-441.7	535.7	371.6	164.10	3.265		
11,700.0	7,093.5	11,919.4	7,298.5	89.7	90.0	-112.49	4,579.9	-441.3	535.8	368.2	167.62	3.197		
11,707.1	7,093.5	11,924.9	7,298.5	89.8	90.1	-112.49	4,585.3	-441.3	535.8	368.0	167.83	3.192 SF		

Company:	Verdad Oil & Gas Corporation	Local Co-ordinate Reference:	Well Meehl 01N-65W-24-4N
Project:	SEC.24-T1N-R65W	TVD Reference:	WELL @ 5038.5ft (RKB - 16.5')
Reference Site:	Meehl 01N-65W-24 Pad Sec.24-T01N-R65W	MD Reference:	WELL @ 5038.5ft (RKB - 16.5')
Site Error:	0.0ft	North Reference:	True
Reference Well:	Meehl 01N-65W-24-4N	Survey Calculation Method:	Minimum Curvature
Well Error:	0.0ft	Output errors are at	2.00 sigma
Reference Wellbore	Wellbore #1	Database:	landmark
Reference Design:	Plan #1 (10-17-14)	Offset TVD Reference:	Offset Datum

Offset Design													Offset Site Error:	0.0 ft
Survey Program: 0-MWD													Offset Well Error:	0.0 ft
Reference		Offset		Semi Major Axis			Distance							Warning
Measured Depth (ft)	Vertical Depth (ft)	Measured Depth (ft)	Vertical Depth (ft)	Reference (ft)	Offset (ft)	Highside Toolface (°)	Offset Wellbore Centre +N/-S (ft)	+E/-W (ft)	Between Centres (ft)	Between Ellipses (ft)	Minimum Separation (ft)	Separation Factor		
0.0	0.0	0.0	0.0	0.0	0.0	-90.01	0.0	-30.0	30.0					
100.0	100.0	100.0	100.0	0.1	0.1	-90.01	0.0	-30.0	30.0	29.7	0.22	133.313		
200.0	200.0	200.0	200.0	0.3	0.3	-90.01	0.0	-30.0	30.0	29.3	0.67	44.438		
300.0	300.0	300.0	300.0	0.6	0.6	-90.01	0.0	-30.0	30.0	28.8	1.12	26.663		
400.0	400.0	400.0	400.0	0.8	0.8	-90.01	0.0	-30.0	30.0	28.4	1.57	19.045		
500.0	500.0	500.0	500.0	1.0	1.0	-90.01	0.0	-30.0	30.0	27.9	2.02	14.813		
600.0	600.0	600.0	600.0	1.2	1.2	-90.01	0.0	-30.0	30.0	27.5	2.47	12.119		
700.0	700.0	700.0	700.0	1.5	1.5	-90.01	0.0	-30.0	30.0	27.0	2.92	10.255		
800.0	800.0	800.0	800.0	1.7	1.7	-90.01	0.0	-30.0	30.0	26.6	3.37	8.888		
900.0	900.0	900.0	900.0	1.9	1.9	-90.01	0.0	-30.0	30.0	26.1	3.82	7.842		
1,000.0	1,000.0	1,000.0	1,000.0	2.1	2.1	-90.01	0.0	-30.0	30.0	25.7	4.27	7.016 CC, ES		
1,100.0	1,100.0	1,099.2	1,099.1	2.4	2.3	-92.01	-1.1	-31.3	31.3	26.6	4.70	6.670		
1,200.0	1,200.0	1,198.1	1,197.9	2.6	2.5	-97.08	-4.4	-35.2	35.6	30.5	5.10	6.968		
1,300.0	1,300.0	1,296.5	1,296.0	2.8	2.7	-103.20	-9.8	-41.8	43.1	37.6	5.52	7.801		
1,400.0	1,400.0	1,394.6	1,393.4	3.0	2.9	-108.80	-17.3	-50.8	54.1	48.1	5.95	9.084		
1,500.0	1,500.0	1,493.8	1,491.7	3.3	3.2	-112.81	-25.6	-60.8	66.5	60.1	6.38	10.411		
1,600.0	1,600.0	1,592.9	1,590.0	3.5	3.5	-115.56	-33.8	-70.8	79.1	72.2	6.82	11.595		
1,700.0	1,700.0	1,692.1	1,688.3	3.7	3.7	-117.55	-42.1	-80.7	91.8	84.5	7.26	12.648		
1,800.0	1,800.0	1,791.2	1,786.6	3.9	4.0	-119.05	-50.4	-90.7	104.6	96.9	7.70	13.586		
1,900.0	1,900.0	1,890.4	1,884.9	4.1	4.3	69.02	-58.7	-100.7	116.9	108.8	8.10	14.436		
2,000.0	1,999.8	1,989.8	1,983.4	4.3	4.6	69.97	-67.0	-110.7	127.9	119.4	8.49	15.065		
2,100.0	2,099.5	2,089.1	2,081.9	4.5	4.9	72.14	-75.3	-120.7	137.9	129.0	8.90	15.490		
2,200.0	2,198.8	2,188.4	2,180.3	4.7	5.2	75.18	-83.5	-130.7	147.3	138.0	9.34	15.772		
2,300.0	2,298.1	2,287.6	2,278.7	4.9	5.5	78.02	-91.8	-140.7	157.1	147.3	9.80	16.026		
2,400.0	2,397.4	2,386.9	2,377.1	5.1	5.8	80.53	-100.1	-150.6	167.2	156.9	10.28	16.260		
2,500.0	2,496.6	2,486.1	2,475.5	5.3	6.1	82.75	-108.4	-160.6	177.5	166.8	10.78	16.473		
2,600.0	2,595.9	2,585.3	2,573.9	5.6	6.5	84.72	-116.7	-170.6	188.1	176.8	11.29	16.668		
2,700.0	2,695.2	2,684.6	2,672.3	5.8	6.8	86.48	-125.0	-180.6	198.9	187.1	11.81	16.844		
2,800.0	2,794.5	2,783.8	2,770.7	6.1	7.1	88.06	-133.2	-190.6	209.9	197.6	12.34	17.004		
2,900.0	2,893.8	2,883.1	2,869.0	6.3	7.4	89.49	-141.5	-200.6	221.0	208.1	12.89	17.149		
3,000.0	2,993.1	2,982.3	2,967.4	6.6	7.8	90.77	-149.8	-210.6	232.2	218.8	13.44	17.282		
3,100.0	3,092.4	3,081.5	3,065.8	6.9	8.1	91.94	-158.1	-220.5	243.6	229.6	14.00	17.402		
3,200.0	3,191.7	3,180.8	3,164.2	7.1	8.4	93.00	-166.4	-230.5	255.0	240.5	14.56	17.512		
3,300.0	3,291.0	3,280.0	3,262.6	7.4	8.7	93.97	-174.7	-240.5	266.5	251.4	15.13	17.613		
3,400.0	3,390.2	3,379.2	3,361.0	7.7	9.1	94.86	-182.9	-250.5	278.1	262.4	15.71	17.706		
3,500.0	3,489.5	3,478.5	3,459.4	8.0	9.4	95.68	-191.2	-260.5	289.7	273.5	16.29	17.791		
3,600.0	3,588.8	3,577.7	3,557.7	8.3	9.7	96.44	-199.5	-270.5	301.4	284.6	16.87	17.870		
3,700.0	3,688.1	3,679.9	3,659.0	8.6	10.0	97.22	-207.9	-280.6	313.0	295.6	17.45	17.940		
3,800.0	3,787.7	3,788.8	3,767.4	8.8	10.3	97.95	-214.9	-289.0	322.0	304.1	17.94	17.947		
3,900.0	3,887.5	3,898.2	3,876.6	9.0	10.5	98.39	-219.2	-294.2	327.7	309.3	18.39	17.816		
4,000.0	3,987.5	4,007.9	3,986.3	9.2	10.7	98.55	-220.9	-296.2	329.8	311.0	18.79	17.551		
4,100.0	4,087.5	4,109.1	4,087.5	9.4	10.9	-90.12	-220.9	-296.3	329.9	310.7	19.16	17.220		
4,200.0	4,187.5	4,209.1	4,187.5	9.6	11.0	-90.12	-220.9	-296.3	329.9	310.3	19.52	16.898		
4,300.0	4,287.5	4,309.1	4,287.5	9.8	11.2	-90.12	-220.9	-296.3	329.9	310.0	19.89	16.584		
4,400.0	4,387.5	4,409.1	4,387.5	10.0	11.4	-90.12	-220.9	-296.3	329.9	309.6	20.26	16.280		
4,500.0	4,487.5	4,509.1	4,487.5	10.2	11.5	-90.12	-220.9	-296.3	329.9	309.2	20.64	15.984		
4,600.0	4,587.5	4,609.1	4,587.5	10.4	11.7	-90.12	-220.9	-296.3	329.9	308.9	21.01	15.697		
4,700.0	4,687.5	4,709.1	4,687.5	10.6	11.9	-90.12	-220.9	-296.3	329.9	308.5	21.40	15.418		
4,800.0	4,787.5	4,809.1	4,787.5	10.8	12.0	-90.12	-220.9	-296.3	329.9	308.1	21.78	15.147		
4,900.0	4,887.5	4,909.1	4,887.5	11.0	12.2	-90.12	-220.9	-296.3	329.9	307.7	22.16	14.883		
5,000.0	4,987.5	5,009.1	4,987.5	11.2	12.4	-90.12	-220.9	-296.3	329.9	307.3	22.55	14.627		
5,100.0	5,087.5	5,109.1	5,087.5	11.4	12.6	-90.12	-220.9	-296.3	329.9	306.9	22.94	14.378		

CC - Min centre to center distance or convergent point, SF - min separation factor, ES - min ellipse separation

Company:	Verdad Oil & Gas Corporation	Local Co-ordinate Reference:	Well Meehl 01N-65W-24-4N
Project:	SEC.24-T1N-R65W	TVD Reference:	WELL @ 5038.5ft (RKB - 16.5')
Reference Site:	Meehl 01N-65W-24 Pad Sec.24-T01N-R65W	MD Reference:	WELL @ 5038.5ft (RKB - 16.5')
Site Error:	0.0ft	North Reference:	True
Reference Well:	Meehl 01N-65W-24-4N	Survey Calculation Method:	Minimum Curvature
Well Error:	0.0ft	Output errors are at	2.00 sigma
Reference Wellbore	Wellbore #1	Database:	landmark
Reference Design:	Plan #1 (10-17-14)	Offset TVD Reference:	Offset Datum

Offset Design												Offset Site Error:	0.0 ft
Survey Program: 0-MWD												Offset Well Error:	0.0 ft
Reference		Offset		Semi Major Axis			Distance						
Measured Depth (ft)	Vertical Depth (ft)	Measured Depth (ft)	Vertical Depth (ft)	Reference (ft)	Offset (ft)	Highside Toolface (°)	Offset Wellbore Centre +N/-S (ft)	+E/-W (ft)	Between Centres (ft)	Between Ellipses (ft)	Minimum Separation (ft)	Separation Factor	Warning
5,200.0	5,187.5	5,209.1	5,187.5	11.6	12.7	-90.12	-220.9	-296.3	329.9	306.5	23.33	14.136	
5,300.0	5,287.5	5,309.1	5,287.5	11.8	12.9	-90.12	-220.9	-296.3	329.9	306.1	23.73	13.901	
5,400.0	5,387.5	5,409.1	5,387.5	12.0	13.1	-90.12	-220.9	-296.3	329.9	305.7	24.13	13.673	
5,500.0	5,487.5	5,509.1	5,487.5	12.2	13.3	-90.12	-220.9	-296.3	329.9	305.3	24.52	13.451	
5,600.0	5,587.5	5,609.1	5,587.5	12.4	13.5	-90.12	-220.9	-296.3	329.9	304.9	24.92	13.235	
5,700.0	5,687.5	5,709.1	5,687.5	12.6	13.7	-90.12	-220.9	-296.3	329.9	304.5	25.33	13.025	
5,800.0	5,787.5	5,809.1	5,787.5	12.8	13.9	-90.12	-220.9	-296.3	329.9	304.1	25.73	12.821	
5,900.0	5,887.5	5,909.1	5,887.5	13.0	14.0	-90.12	-220.9	-296.3	329.9	303.7	26.13	12.623	
6,000.0	5,987.5	6,009.1	5,987.5	13.2	14.2	-90.12	-220.9	-296.3	329.9	303.3	26.54	12.429	
6,100.0	6,087.5	6,109.1	6,087.5	13.4	14.4	-90.12	-220.9	-296.3	329.9	302.9	26.95	12.241	
6,200.0	6,187.5	6,209.1	6,187.5	13.6	14.6	-90.12	-220.9	-296.3	329.9	302.5	27.36	12.059	
6,300.0	6,287.5	6,309.1	6,287.5	13.8	14.8	-90.12	-220.9	-296.3	329.9	302.1	27.77	11.880	
6,400.0	6,387.5	6,409.1	6,387.5	14.0	15.0	-90.12	-220.9	-296.3	329.9	301.7	28.18	11.707	
6,500.0	6,487.5	6,509.1	6,487.5	14.2	15.2	-90.12	-220.9	-296.3	329.9	301.3	28.59	11.538	
6,600.0	6,587.5	6,609.1	6,587.5	14.4	15.4	-90.12	-220.9	-296.3	329.9	300.9	29.00	11.374	
6,700.0	6,687.0	6,709.5	6,687.4	14.6	15.5	-90.36	-212.3	-296.2	329.9	300.5	29.34	11.241	
6,800.0	6,783.0	6,809.9	6,783.7	14.7	15.6	-90.34	-184.7	-296.1	329.9	300.3	29.53	11.169	
6,900.0	6,872.0	6,910.3	6,873.0	14.8	15.7	-90.31	-139.1	-295.9	329.9	300.2	29.64	11.128	
7,000.0	6,950.8	7,010.6	6,951.9	14.8	15.7	-90.26	-77.4	-295.7	329.9	300.1	29.77	11.080	
7,100.0	7,016.4	7,110.8	7,017.4	15.0	15.7	-90.21	-1.7	-295.3	329.9	299.8	30.05	10.977	
7,200.0	7,066.5	7,211.1	7,067.3	15.3	15.8	-90.15	85.0	-295.0	329.9	299.3	30.60	10.780	
7,300.0	7,099.1	7,311.2	7,099.6	15.7	16.0	-90.09	179.6	-294.6	329.9	298.4	31.49	10.474	
7,400.0	7,113.1	7,411.2	7,113.2	16.4	16.6	-90.02	278.6	-294.2	329.9	297.1	32.75	10.072	
7,500.0	7,113.3	7,511.2	7,113.3	17.2	17.4	-90.00	378.6	-293.7	329.9	295.5	34.36	9.599	
7,600.0	7,112.9	7,611.2	7,112.8	18.1	18.4	-90.00	478.6	-293.3	329.9	293.6	36.30	9.087	
7,700.0	7,112.4	7,711.2	7,112.4	19.3	19.5	-90.00	578.6	-292.9	329.9	291.3	38.52	8.563	
7,800.0	7,111.9	7,811.2	7,111.9	20.5	20.7	-90.00	678.6	-292.5	329.9	288.9	40.98	8.049	
7,900.0	7,111.4	7,911.2	7,111.4	21.8	22.1	-90.00	778.6	-292.1	329.9	286.2	43.64	7.559	
8,000.0	7,111.0	8,011.2	7,111.0	23.2	23.5	-90.00	878.6	-291.6	329.9	283.4	46.46	7.100	
8,100.0	7,110.5	8,111.2	7,110.5	24.7	24.9	-90.00	978.6	-291.2	329.9	280.4	49.41	6.676	
8,200.0	7,110.0	8,211.2	7,110.0	26.3	26.4	-90.00	1,078.6	-290.8	329.9	277.4	52.48	6.285	
8,300.0	7,109.6	8,311.2	7,109.6	27.8	28.0	-90.00	1,178.6	-290.4	329.9	274.2	55.64	5.928	
8,400.0	7,109.1	8,411.2	7,109.1	29.5	29.6	-90.00	1,278.6	-290.0	329.9	271.0	58.89	5.601	
8,500.0	7,108.6	8,511.2	7,108.6	31.1	31.3	-90.00	1,378.5	-289.5	329.8	267.7	62.20	5.303	
8,600.0	7,108.1	8,611.2	7,108.1	32.8	32.9	-90.00	1,478.5	-289.1	329.8	264.3	65.56	5.031	
8,700.0	7,107.7	8,711.2	7,107.7	34.5	34.6	-90.00	1,578.5	-288.7	329.8	260.9	68.97	4.782	
8,800.0	7,107.2	8,811.2	7,107.2	36.2	36.4	-90.00	1,678.5	-288.3	329.8	257.4	72.43	4.554	
8,900.0	7,106.7	8,911.2	7,106.7	38.0	38.1	-90.00	1,778.5	-287.9	329.8	253.9	75.92	4.345	
9,000.0	7,106.3	9,011.2	7,106.3	39.7	39.9	-90.00	1,878.5	-287.4	329.8	250.4	79.44	4.152	
9,100.0	7,105.8	9,111.2	7,105.8	41.5	41.6	-90.00	1,978.5	-287.0	329.8	246.9	82.99	3.974	
9,200.0	7,105.3	9,211.2	7,105.3	43.3	43.4	-90.00	2,078.5	-286.6	329.8	243.3	86.56	3.810	
9,300.0	7,104.8	9,311.2	7,104.8	45.1	45.2	-90.00	2,178.5	-286.2	329.8	239.7	90.16	3.659	
9,400.0	7,104.4	9,411.2	7,104.4	46.9	47.0	-90.00	2,278.5	-285.8	329.8	236.1	93.77	3.518	
9,500.0	7,103.9	9,511.2	7,103.9	48.7	48.8	-90.00	2,378.5	-285.3	329.8	232.4	97.40	3.387	
9,600.0	7,103.4	9,611.2	7,103.4	50.6	50.6	-90.00	2,478.5	-284.9	329.8	228.8	101.04	3.264	
9,700.0	7,103.0	9,711.2	7,103.0	52.4	52.4	-90.00	2,578.5	-284.5	329.8	225.1	104.70	3.150	
9,800.0	7,102.5	9,811.2	7,102.5	54.2	54.3	-90.00	2,678.5	-284.1	329.8	221.5	108.37	3.044	
9,900.0	7,102.0	9,911.2	7,102.0	56.1	56.1	-90.00	2,778.5	-283.7	329.8	217.8	112.05	2.944	
10,000.0	7,101.5	10,011.2	7,101.5	57.9	57.9	-90.00	2,878.5	-283.2	329.8	214.1	115.74	2.850	
10,100.0	7,101.1	10,111.2	7,101.1	59.8	59.8	-90.00	2,978.5	-282.8	329.8	210.4	119.43	2.762	
10,200.0	7,100.6	10,211.2	7,100.6	61.6	61.6	-90.00	3,078.5	-282.4	329.8	206.7	123.14	2.679	
10,300.0	7,100.1	10,311.2	7,100.1	63.5	63.5	-90.00	3,178.5	-282.0	329.8	203.0	126.85	2.600	

CC - Min centre to center distance or convergent point, SF - min separation factor, ES - min ellipse separation

Company:	Verdad Oil & Gas Corporation	Local Co-ordinate Reference:	Well Meehl 01N-65W-24-4N
Project:	SEC.24-T1N-R65W	TVD Reference:	WELL @ 5038.5ft (RKB - 16.5')
Reference Site:	Meehl 01N-65W-24 Pad Sec.24-T01N-R65W	MD Reference:	WELL @ 5038.5ft (RKB - 16.5')
Site Error:	0.0ft	North Reference:	True
Reference Well:	Meehl 01N-65W-24-4N	Survey Calculation Method:	Minimum Curvature
Well Error:	0.0ft	Output errors are at	2.00 sigma
Reference Wellbore	Wellbore #1	Database:	landmark
Reference Design:	Plan #1 (10-17-14)	Offset TVD Reference:	Offset Datum

Offset Design Meehl 01N-65W-24 Pad Sec.24-T01N-R65W - Meehl 01N-65W-24-2N - Wellbore #1 - Plan #1 (10-17-1												Offset Site Error:	0.0 ft
Survey Program: 0-MWD												Offset Well Error:	0.0 ft
Reference		Offset		Semi Major Axis			Distance						Warning
Measured Depth (ft)	Vertical Depth (ft)	Measured Depth (ft)	Vertical Depth (ft)	Reference (ft)	Offset (ft)	Highside Toolface (°)	Offset Wellbore Centre +N/-S (ft)	+E/-W (ft)	Between Centres (ft)	Between Ellipses (ft)	Minimum Separation (ft)	Separation Factor	
10,400.0	7,099.7	10,411.2	7,099.7	65.3	65.4	-90.00	3,278.5	-281.6	329.8	199.3	130.57	2.526	
10,500.0	7,099.2	10,511.2	7,099.2	67.2	67.2	-90.00	3,378.5	-281.1	329.8	195.5	134.30	2.456	
10,600.0	7,098.7	10,611.2	7,098.7	69.1	69.1	-90.00	3,478.5	-280.7	329.8	191.8	138.03	2.390	
10,700.0	7,098.2	10,711.2	7,098.2	70.9	70.9	-90.00	3,578.5	-280.3	329.8	188.1	141.77	2.327	
10,800.0	7,097.8	10,811.2	7,097.8	72.8	72.8	-90.00	3,678.5	-279.9	329.8	184.3	145.51	2.267	
10,900.0	7,097.3	10,911.2	7,097.3	74.7	74.7	-90.00	3,778.5	-279.5	329.8	180.6	149.25	2.210	
11,000.0	7,096.8	11,011.2	7,096.8	76.5	76.6	-90.00	3,878.5	-279.0	329.8	176.8	153.00	2.156	
11,100.0	7,096.4	11,111.2	7,096.4	78.4	78.4	-90.00	3,978.5	-278.6	329.8	173.1	156.76	2.104	
11,200.0	7,095.9	11,211.2	7,095.9	80.3	80.3	-90.00	4,078.5	-278.2	329.8	169.3	160.51	2.055	
11,300.0	7,095.4	11,311.2	7,095.4	82.2	82.2	-90.00	4,178.5	-277.8	329.8	165.6	164.27	2.008	
11,400.0	7,094.9	11,411.2	7,094.9	84.1	84.1	-90.00	4,278.5	-277.4	329.8	161.8	168.04	1.963	
11,500.0	7,094.5	11,511.2	7,094.5	85.9	85.9	-90.00	4,378.5	-276.9	329.8	158.0	171.80	1.920	
11,600.0	7,094.0	11,611.2	7,094.0	87.8	87.8	-90.00	4,478.5	-276.5	329.8	154.3	175.57	1.879	
11,700.0	7,093.5	11,711.2	7,093.5	89.7	89.7	-90.00	4,578.5	-276.1	329.8	150.5	179.30	1.840	
11,705.8	7,093.5	11,717.0	7,093.5	89.8	89.8	-90.00	4,584.2	-276.1	329.8	150.3	179.50	1.838	
11,707.1	7,093.5	11,717.3	7,093.5	89.8	89.8	-90.00	4,584.6	-276.1	329.8	150.3	179.53	1.837 SF	

Company:	Verdad Oil & Gas Corporation	Local Co-ordinate Reference:	Well Meehl 01N-65W-24-4N
Project:	SEC.24-T1N-R65W	TVD Reference:	WELL @ 5038.5ft (RKB - 16.5')
Reference Site:	Meehl 01N-65W-24 Pad Sec.24-T01N-R65W	MD Reference:	WELL @ 5038.5ft (RKB - 16.5')
Site Error:	0.0ft	North Reference:	True
Reference Well:	Meehl 01N-65W-24-4N	Survey Calculation Method:	Minimum Curvature
Well Error:	0.0ft	Output errors are at	2.00 sigma
Reference Wellbore	Wellbore #1	Database:	landmark
Reference Design:	Plan #1 (10-17-14)	Offset TVD Reference:	Offset Datum

Offset Design													Offset Site Error:	0.0 ft
Survey Program: 0-MWD													Offset Well Error:	0.0 ft
Reference		Offset		Semi Major Axis			Distance							Warning
Measured Depth (ft)	Vertical Depth (ft)	Measured Depth (ft)	Vertical Depth (ft)	Reference (ft)	Offset (ft)	Highside Toolface (°)	Offset Wellbore Centre +N/-S (ft)	+E/-W (ft)	Between Centres (ft)	Between Ellipses (ft)	Minimum Separation (ft)	Separation Factor		
0.0	0.0	0.0	0.0	0.0	0.0	-91.38	-0.4	-15.1	15.1	15.1	0.00	N/A		
100.0	100.0	100.0	100.0	0.1	0.1	-91.38	-0.4	-15.1	15.1	14.9	0.22	67.299		
200.0	200.0	200.0	200.0	0.3	0.3	-91.38	-0.4	-15.1	15.1	14.5	0.67	22.433		
300.0	300.0	300.0	300.0	0.6	0.6	-91.38	-0.4	-15.1	15.1	14.0	1.12	13.460		
400.0	400.0	400.0	400.0	0.8	0.8	-91.38	-0.4	-15.1	15.1	13.6	1.57	9.614		
500.0	500.0	500.0	500.0	1.0	1.0	-91.38	-0.4	-15.1	15.1	13.1	2.02	7.478		
600.0	600.0	600.0	600.0	1.2	1.2	-91.38	-0.4	-15.1	15.1	12.7	2.47	6.118		
700.0	700.0	700.0	700.0	1.5	1.5	-91.38	-0.4	-15.1	15.1	12.2	2.92	5.177		
800.0	800.0	800.0	800.0	1.7	1.7	-91.38	-0.4	-15.1	15.1	11.8	3.37	4.487		
900.0	900.0	900.0	900.0	1.9	1.9	-91.38	-0.4	-15.1	15.1	11.3	3.82	3.959		
1,000.0	1,000.0	1,000.0	1,000.0	2.1	2.1	-91.38	-0.4	-15.1	15.1	10.9	4.27	3.542		
1,100.0	1,100.0	1,100.0	1,100.0	2.4	2.4	-91.38	-0.4	-15.1	15.1	10.4	4.72	3.205		
1,200.0	1,200.0	1,200.0	1,200.0	2.6	2.6	-91.38	-0.4	-15.1	15.1	10.0	5.17	2.926		
1,300.0	1,300.0	1,300.0	1,300.0	2.8	2.8	-91.38	-0.4	-15.1	15.1	9.5	5.62	2.692		
1,400.0	1,400.0	1,400.0	1,400.0	3.0	3.0	-91.38	-0.4	-15.1	15.1	9.1	6.07	2.493		
1,500.0	1,500.0	1,500.0	1,500.0	3.3	3.3	-91.38	-0.4	-15.1	15.1	8.6	6.52	2.321		
1,600.0	1,600.0	1,600.0	1,600.0	3.5	3.5	-91.38	-0.4	-15.1	15.1	8.2	6.97	2.171 CC		
1,700.0	1,700.0	1,699.7	1,699.7	3.7	3.7	-96.80	-1.9	-15.9	16.0	8.7	7.39	2.172		
1,800.0	1,800.0	1,799.2	1,799.0	3.9	3.9	-109.46	-6.5	-18.4	19.5	11.7	7.79	2.503		
1,900.0	1,900.0	1,898.3	1,897.7	4.1	4.0	69.88	-14.1	-22.4	25.9	17.7	8.16	3.170		
2,000.0	1,999.8	1,997.6	1,996.3	4.3	4.2	67.20	-24.3	-27.8	33.8	25.3	8.52	3.972		
2,100.0	2,099.5	2,097.3	2,095.4	4.5	4.5	69.70	-34.9	-33.4	40.9	32.0	8.89	4.595		
2,200.0	2,198.8	2,197.0	2,194.3	4.7	4.7	74.85	-45.5	-39.0	47.1	37.8	9.30	5.068		
2,300.0	2,298.1	2,296.7	2,293.3	4.9	4.9	79.14	-56.1	-44.6	53.6	43.9	9.73	5.511		
2,400.0	2,397.4	2,396.5	2,392.3	5.1	5.2	82.48	-66.8	-50.2	60.3	50.1	10.18	5.926		
2,500.0	2,496.2	2,496.2	2,491.3	5.3	5.4	85.15	-77.4	-55.8	67.2	56.5	10.65	6.311		
2,600.0	2,595.9	2,595.9	2,590.3	5.6	5.7	87.32	-88.0	-61.4	74.2	63.1	11.14	6.663		
2,700.0	2,695.2	2,695.6	2,689.3	5.8	6.0	89.12	-98.6	-67.0	81.3	69.6	11.64	6.984		
2,800.0	2,794.5	2,795.3	2,788.3	6.1	6.2	90.62	-109.2	-72.6	88.4	76.3	12.15	7.277		
2,900.0	2,893.8	2,895.0	2,887.3	6.3	6.5	91.90	-119.8	-78.2	95.6	83.0	12.68	7.543		
3,000.0	2,993.1	2,994.8	2,986.3	6.6	6.8	93.00	-130.4	-83.8	102.9	89.7	13.22	7.785		
3,100.0	3,092.4	3,094.5	3,085.3	6.9	7.1	93.96	-141.0	-89.4	110.2	96.4	13.76	8.006		
3,200.0	3,191.7	3,194.2	3,184.3	7.1	7.4	94.79	-151.7	-95.0	117.5	103.2	14.31	8.208		
3,300.0	3,291.0	3,293.9	3,283.3	7.4	7.7	95.53	-162.3	-100.6	124.8	109.9	14.87	8.392		
3,400.0	3,390.2	3,393.6	3,382.3	7.7	8.0	96.19	-172.9	-106.2	132.2	116.7	15.44	8.561		
3,500.0	3,489.5	3,493.4	3,481.3	8.0	8.2	96.77	-183.5	-111.8	139.5	123.5	16.01	8.716		
3,600.0	3,588.8	3,593.1	3,580.3	8.3	8.5	97.30	-194.1	-117.4	146.9	130.3	16.58	8.859		
3,700.0	3,688.1	3,693.4	3,679.9	8.6	8.8	97.80	-204.7	-123.0	154.2	137.1	17.15	8.991		
3,800.0	3,787.7	3,795.9	3,782.0	8.8	9.1	98.21	-213.2	-127.4	160.0	142.3	17.63	9.071		
3,900.0	3,887.5	3,898.6	3,884.4	9.0	9.3	98.46	-218.5	-130.2	163.5	145.5	18.08	9.046		
4,000.0	3,987.5	4,001.4	3,987.2	9.2	9.5	98.55	-220.5	-131.3	164.9	146.4	18.48	8.924		
4,100.0	4,087.5	4,101.7	4,087.5	9.4	9.7	-90.13	-220.6	-131.3	164.9	146.1	18.85	8.748		
4,200.0	4,187.5	4,201.7	4,187.5	9.6	9.9	-90.13	-220.6	-131.3	164.9	145.7	19.23	8.578		
4,300.0	4,287.5	4,301.7	4,287.5	9.8	10.0	-90.13	-220.6	-131.3	164.9	145.3	19.60	8.413		
4,400.0	4,387.5	4,401.7	4,387.5	10.0	10.2	-90.13	-220.6	-131.3	164.9	144.9	19.98	8.253		
4,500.0	4,487.5	4,501.7	4,487.5	10.2	10.4	-90.13	-220.6	-131.3	164.9	144.6	20.37	8.097		
4,600.0	4,587.5	4,601.7	4,587.5	10.4	10.6	-90.13	-220.6	-131.3	164.9	144.2	20.75	7.947		
4,700.0	4,687.5	4,701.7	4,687.5	10.6	10.8	-90.13	-220.6	-131.3	164.9	143.8	21.14	7.801		
4,800.0	4,787.5	4,801.7	4,787.5	10.8	11.0	-90.13	-220.6	-131.3	164.9	143.4	21.53	7.659		
4,900.0	4,887.5	4,901.7	4,887.5	11.0	11.2	-90.13	-220.6	-131.3	164.9	143.0	21.93	7.522		
5,000.0	4,987.5	5,001.7	4,987.5	11.2	11.4	-90.13	-220.6	-131.3	164.9	142.6	22.32	7.389		
5,100.0	5,087.5	5,101.7	5,087.5	11.4	11.6	-90.13	-220.6	-131.3	164.9	142.2	22.72	7.259		

CC - Min centre to center distance or convergent point, SF - min separation factor, ES - min ellipse separation

Company:	Verdad Oil & Gas Corporation	Local Co-ordinate Reference:	Well Meehl 01N-65W-24-4N
Project:	SEC.24-T1N-R65W	TVD Reference:	WELL @ 5038.5ft (RKB - 16.5')
Reference Site:	Meehl 01N-65W-24 Pad Sec.24-T01N-R65W	MD Reference:	WELL @ 5038.5ft (RKB - 16.5')
Site Error:	0.0ft	North Reference:	True
Reference Well:	Meehl 01N-65W-24-4N	Survey Calculation Method:	Minimum Curvature
Well Error:	0.0ft	Output errors are at	2.00 sigma
Reference Wellbore	Wellbore #1	Database:	landmark
Reference Design:	Plan #1 (10-17-14)	Offset TVD Reference:	Offset Datum

Offset Design												Offset Site Error:	0.0 ft
Survey Program: 0-MWD												Offset Well Error:	0.0 ft
Reference		Offset		Semi Major Axis			Distance						Warning
Measured Depth (ft)	Vertical Depth (ft)	Measured Depth (ft)	Vertical Depth (ft)	Reference (ft)	Offset (ft)	Highside Toolface (°)	Offset Wellbore Centre +N/-S (ft)	+E/-W (ft)	Between Centres (ft)	Between Ellipses (ft)	Minimum Separation (ft)	Separation Factor	
5,200.0	5,187.5	5,201.7	5,187.5	11.6	11.8	-90.13	-220.6	-131.3	164.9	141.8	23.12	7.134	
5,300.0	5,287.5	5,301.7	5,287.5	11.8	12.0	-90.13	-220.6	-131.3	164.9	141.4	23.52	7.013	
5,400.0	5,387.5	5,401.7	5,387.5	12.0	12.2	-90.13	-220.6	-131.3	164.9	141.0	23.92	6.894	
5,500.0	5,487.5	5,501.7	5,487.5	12.2	12.4	-90.13	-220.6	-131.3	164.9	140.6	24.33	6.780	
5,600.0	5,587.5	5,601.7	5,587.5	12.4	12.6	-90.13	-220.6	-131.3	164.9	140.2	24.73	6.669	
5,700.0	5,687.5	5,701.7	5,687.5	12.6	12.8	-90.13	-220.6	-131.3	164.9	139.8	25.14	6.561	
5,800.0	5,787.5	5,801.7	5,787.5	12.8	13.0	-90.13	-220.6	-131.3	164.9	139.4	25.55	6.456	
5,900.0	5,887.5	5,901.7	5,887.5	13.0	13.2	-90.13	-220.6	-131.3	164.9	139.0	25.96	6.354	
6,000.0	5,987.5	6,001.7	5,987.5	13.2	13.4	-90.13	-220.6	-131.3	164.9	138.6	26.37	6.254	
6,100.0	6,087.5	6,101.7	6,087.5	13.4	13.6	-90.13	-220.6	-131.3	164.9	138.1	26.78	6.158	
6,200.0	6,187.5	6,201.7	6,187.5	13.6	13.8	-90.13	-220.6	-131.3	164.9	137.7	27.20	6.064	
6,300.0	6,287.5	6,301.7	6,287.5	13.8	14.0	-90.13	-220.6	-131.3	164.9	137.3	27.61	5.973	
6,400.0	6,387.5	6,401.7	6,387.5	14.0	14.2	-90.13	-220.6	-131.3	164.9	136.9	28.03	5.885	
6,500.0	6,487.5	6,501.7	6,487.5	14.2	14.4	-90.13	-220.6	-131.3	164.9	136.5	28.44	5.798	
6,600.0	6,587.5	6,601.7	6,587.5	14.4	14.6	-90.13	-220.6	-131.3	164.9	136.1	28.86	5.714	
6,700.0	6,687.5	6,701.9	6,687.2	14.6	14.8	-90.36	-211.9	-131.3	164.9	135.7	29.21	5.647	
6,800.0	6,783.0	6,802.1	6,783.4	14.7	14.9	-90.34	-184.5	-131.2	164.9	135.5	29.40	5.609	
6,900.0	6,872.0	6,902.3	6,872.5	14.8	14.9	-90.31	-139.1	-131.0	164.9	135.4	29.52	5.587	
7,000.0	6,950.8	7,002.4	6,951.3	14.8	15.0	-90.27	-77.5	-130.7	164.9	135.3	29.66	5.561	
7,100.0	7,016.4	7,102.6	7,016.9	15.0	15.0	-90.21	-2.1	-130.4	164.9	135.0	29.95	5.507	
7,200.0	7,066.5	7,202.7	7,066.9	15.3	15.2	-90.15	84.5	-130.0	164.9	134.4	30.50	5.406	
7,300.0	7,099.1	7,302.7	7,099.4	15.7	15.7	-90.09	179.0	-129.6	164.9	133.5	31.41	5.250	
7,400.0	7,113.1	7,402.8	7,113.2	16.4	16.4	-90.02	277.9	-129.2	164.9	132.2	32.69	5.046	
7,500.0	7,113.3	7,502.8	7,113.3	17.2	17.2	-90.00	377.9	-128.8	164.9	130.6	34.30	4.808	
7,600.0	7,112.9	7,602.8	7,112.9	18.1	18.2	-90.00	477.9	-128.4	164.9	128.7	36.25	4.549	
7,700.0	7,112.4	7,702.8	7,112.4	19.3	19.3	-90.00	577.9	-128.0	164.9	126.4	38.48	4.286	
7,800.0	7,111.9	7,802.8	7,111.9	20.5	20.5	-90.00	677.9	-127.6	164.9	124.0	40.95	4.027	
7,900.0	7,111.4	7,902.8	7,111.4	21.8	21.8	-90.00	777.9	-127.1	164.9	121.3	43.62	3.781	
8,000.0	7,111.0	8,002.8	7,111.0	23.2	23.3	-90.00	877.9	-126.7	164.9	118.5	46.44	3.551	
8,100.0	7,110.5	8,102.8	7,110.5	24.7	24.7	-90.00	977.9	-126.3	164.9	115.5	49.41	3.338	
8,200.0	7,110.0	8,202.8	7,110.0	26.3	26.3	-90.00	1,077.9	-125.9	164.9	112.4	52.48	3.142	
8,300.0	7,109.6	8,302.8	7,109.6	27.8	27.8	-90.00	1,177.9	-125.5	164.9	109.3	55.65	2.963	
8,400.0	7,109.1	8,402.8	7,109.1	29.5	29.5	-90.00	1,277.9	-125.0	164.9	106.0	58.90	2.800	
8,500.0	7,108.6	8,502.8	7,108.6	31.1	31.1	-90.00	1,377.9	-124.6	164.9	102.7	62.21	2.651	
8,600.0	7,108.1	8,602.8	7,108.1	32.8	32.8	-90.00	1,477.9	-124.2	164.9	99.3	65.58	2.515	
8,700.0	7,107.7	8,702.8	7,107.7	34.5	34.5	-90.00	1,577.9	-123.8	164.9	95.9	69.00	2.390	
8,800.0	7,107.2	8,802.8	7,107.2	36.2	36.2	-90.00	1,677.8	-123.4	164.9	92.5	72.45	2.276	
8,900.0	7,106.7	8,902.8	7,106.7	38.0	38.0	-90.00	1,777.8	-122.9	164.9	89.0	75.95	2.171	
9,000.0	7,106.3	9,002.8	7,106.3	39.7	39.8	-90.00	1,877.8	-122.5	164.9	85.4	79.47	2.075	
9,100.0	7,105.8	9,102.8	7,105.8	41.5	41.5	-90.00	1,977.8	-122.1	164.9	81.9	83.02	1.986	
9,200.0	7,105.3	9,202.8	7,105.3	43.3	43.3	-90.00	2,077.8	-121.7	164.9	78.3	86.60	1.904	
9,300.0	7,104.8	9,302.8	7,104.8	45.1	45.1	-90.00	2,177.8	-121.3	164.9	74.7	90.19	1.828	
9,400.0	7,104.4	9,402.8	7,104.4	46.9	46.9	-90.00	2,277.8	-120.8	164.9	71.1	93.81	1.758	
9,500.0	7,103.9	9,502.8	7,103.9	48.7	48.7	-90.00	2,377.8	-120.4	164.9	67.5	97.44	1.693	
9,600.0	7,103.4	9,602.8	7,103.4	50.6	50.6	-90.00	2,477.8	-120.0	164.9	63.8	101.08	1.632	
9,700.0	7,103.0	9,702.8	7,103.0	52.4	52.4	-90.00	2,577.8	-119.6	164.9	60.2	104.74	1.575	
9,800.0	7,102.5	9,802.8	7,102.5	54.2	54.2	-90.00	2,677.8	-119.2	164.9	56.5	108.41	1.521	
9,900.0	7,102.0	9,902.8	7,102.0	56.1	56.1	-90.00	2,777.8	-118.7	164.9	52.8	112.09	1.471 Level 3	
10,000.0	7,101.5	10,002.8	7,101.5	57.9	57.9	-90.00	2,877.8	-118.3	164.9	49.1	115.78	1.424 Level 3	
10,100.0	7,101.1	10,102.8	7,101.1	59.8	59.7	-90.00	2,977.8	-117.9	164.9	45.4	119.48	1.380 Level 3	
10,200.0	7,100.6	10,202.8	7,100.6	61.6	61.6	-90.00	3,077.8	-117.5	164.9	41.7	123.19	1.339 Level 3	
10,300.0	7,100.1	10,302.8	7,100.1	63.5	63.5	-90.00	3,177.8	-117.1	164.9	38.0	126.90	1.300 Level 3	

CC - Min centre to center distance or convergent point, SF - min separation factor, ES - min ellipse separation

Company:	Verdad Oil & Gas Corporation	Local Co-ordinate Reference:	Well Meehl 01N-65W-24-4N
Project:	SEC.24-T1N-R65W	TVD Reference:	WELL @ 5038.5ft (RKB - 16.5')
Reference Site:	Meehl 01N-65W-24 Pad Sec.24-T01N-R65W	MD Reference:	WELL @ 5038.5ft (RKB - 16.5')
Site Error:	0.0ft	North Reference:	True
Reference Well:	Meehl 01N-65W-24-4N	Survey Calculation Method:	Minimum Curvature
Well Error:	0.0ft	Output errors are at	2.00 sigma
Reference Wellbore	Wellbore #1	Database:	landmark
Reference Design:	Plan #1 (10-17-14)	Offset TVD Reference:	Offset Datum

Offset Design Meehl 01N-65W-24 Pad Sec.24-T01N-R65W - Meehl 01N-65W-24-3N - Wellbore #1 - Plan #1 (10-17-1												Offset Site Error:	0.0 ft
Survey Program: 0-MWD												Offset Well Error:	0.0 ft
Reference		Offset		Semi Major Axis			Distance						
Measured Depth (ft)	Vertical Depth (ft)	Measured Depth (ft)	Vertical Depth (ft)	Reference (ft)	Offset (ft)	Highside Toolface (°)	Offset Wellbore Centre +N/-S (ft)	+E/-W (ft)	Between Centres (ft)	Between Ellipses (ft)	Minimum Separation (ft)	Separation Factor	Warning
10,400.0	7,099.7	10,402.8	7,099.7	65.3	65.3	-90.00	3,277.8	-116.6	164.9	34.3	130.62	1.263	Level 3
10,500.0	7,099.2	10,502.8	7,099.2	67.2	67.2	-90.00	3,377.8	-116.2	164.9	30.6	134.35	1.228	Level 2
10,600.0	7,098.7	10,602.8	7,098.7	69.1	69.0	-90.00	3,477.8	-115.8	164.9	26.8	138.08	1.194	Level 2
10,700.0	7,098.2	10,702.8	7,098.2	70.9	70.9	-90.00	3,577.8	-115.4	164.9	23.1	141.82	1.163	Level 2
10,800.0	7,097.8	10,802.8	7,097.8	72.8	72.8	-90.00	3,677.8	-115.0	164.9	19.4	145.56	1.133	Level 2
10,900.0	7,097.3	10,902.8	7,097.3	74.7	74.7	-90.00	3,777.8	-114.5	164.9	15.6	149.30	1.105	Level 2
11,000.0	7,096.8	11,002.8	7,096.8	76.5	76.5	-90.00	3,877.8	-114.1	164.9	11.9	153.05	1.078	Level 2
11,100.0	7,096.4	11,102.8	7,096.4	78.4	78.4	-90.00	3,977.8	-113.7	164.9	8.1	156.81	1.052	Level 2
11,200.0	7,095.9	11,202.8	7,095.9	80.3	80.3	-90.00	4,077.8	-113.3	164.9	4.4	160.57	1.027	Level 2
11,300.0	7,095.4	11,302.8	7,095.4	82.2	82.2	-90.00	4,177.8	-112.9	164.9	0.6	164.33	1.004	Level 2
11,400.0	7,094.9	11,402.8	7,094.9	84.1	84.0	-90.00	4,277.8	-112.4	164.9	-3.2	168.09	0.981	Level 1
11,500.0	7,094.5	11,502.8	7,094.5	85.9	85.9	-90.00	4,377.8	-112.0	164.9	-6.9	171.86	0.960	Level 1
11,600.0	7,094.0	11,602.8	7,094.0	87.8	87.8	-90.00	4,477.8	-111.6	164.9	-10.7	175.63	0.939	Level 1
11,700.0	7,093.5	11,702.8	7,093.5	89.7	89.7	-90.00	4,577.8	-111.2	164.9	-14.5	179.40	0.919	Level 1
11,705.9	7,093.5	11,708.7	7,093.5	89.8	89.8	-90.00	4,583.7	-111.2	164.9	-14.7	179.62	0.918	Level 1
11,707.1	7,093.5	11,709.2	7,093.5	89.8	89.8	-90.00	4,584.2	-111.2	164.9	-14.7	179.65	0.918	Level 1, ES, SF

Company:	Verdad Oil & Gas Corporation	Local Co-ordinate Reference:	Well Meehl 01N-65W-24-4N
Project:	SEC.24-T1N-R65W	TVD Reference:	WELL @ 5038.5ft (RKB - 16.5')
Reference Site:	Meehl 01N-65W-24 Pad Sec.24-T01N-R65W	MD Reference:	WELL @ 5038.5ft (RKB - 16.5')
Site Error:	0.0ft	North Reference:	True
Reference Well:	Meehl 01N-65W-24-4N	Survey Calculation Method:	Minimum Curvature
Well Error:	0.0ft	Output errors are at	2.00 sigma
Reference Wellbore	Wellbore #1	Database:	landmark
Reference Design:	Plan #1 (10-17-14)	Offset TVD Reference:	Offset Datum

Offset Design													Offset Site Error:	0.0 ft
Survey Program: 0-MWD													Offset Well Error:	0.0 ft
Reference		Offset		Semi Major Axis			Distance							Warning
Measured Depth (ft)	Vertical Depth (ft)	Measured Depth (ft)	Vertical Depth (ft)	Reference (ft)	Offset (ft)	Highside Toolface (°)	Offset Wellbore Centre +N/-S (ft)	+E/-W (ft)	Between Centres (ft)	Between Ellipses (ft)	Minimum Separation (ft)	Separation Factor		
0.0	0.0	0.0	0.0	0.0	0.0	90.06	0.0	15.1	15.1	15.1	0.00	N/A		
100.0	100.0	100.0	100.0	0.1	0.1	90.06	0.0	15.1	15.1	14.9	0.22	67.280		
200.0	200.0	200.0	200.0	0.3	0.3	90.06	0.0	15.1	15.1	14.4	0.67	22.427		
300.0	300.0	300.0	300.0	0.6	0.6	90.06	0.0	15.1	15.1	14.0	1.12	13.456		
400.0	400.0	400.0	400.0	0.8	0.8	90.06	0.0	15.1	15.1	13.5	1.57	9.611		
500.0	500.0	500.0	500.0	1.0	1.0	90.06	0.0	15.1	15.1	13.1	2.02	7.476		
600.0	600.0	600.0	600.0	1.2	1.2	90.06	0.0	15.1	15.1	12.6	2.47	6.116		
700.0	700.0	700.0	700.0	1.5	1.5	90.06	0.0	15.1	15.1	12.2	2.92	5.175		
800.0	800.0	800.0	800.0	1.7	1.7	90.06	0.0	15.1	15.1	11.8	3.37	4.485		
900.0	900.0	900.0	900.0	1.9	1.9	90.06	0.0	15.1	15.1	11.3	3.82	3.958		
1,000.0	1,000.0	1,000.0	1,000.0	2.1	2.1	90.06	0.0	15.1	15.1	10.9	4.27	3.541		
1,100.0	1,100.0	1,100.0	1,100.0	2.4	2.4	90.06	0.0	15.1	15.1	10.4	4.72	3.204		
1,200.0	1,200.0	1,200.0	1,200.0	2.6	2.6	90.06	0.0	15.1	15.1	10.0	5.17	2.925		
1,300.0	1,300.0	1,300.0	1,300.0	2.8	2.8	90.06	0.0	15.1	15.1	9.5	5.62	2.691		
1,400.0	1,400.0	1,400.0	1,400.0	3.0	3.0	90.06	0.0	15.1	15.1	9.1	6.07	2.492		
1,500.0	1,500.0	1,500.0	1,500.0	3.3	3.3	90.06	0.0	15.1	15.1	8.6	6.52	2.320		
1,600.0	1,600.0	1,600.0	1,600.0	3.5	3.5	90.06	0.0	15.1	15.1	8.2	6.97	2.170		
1,700.0	1,700.0	1,700.0	1,700.0	3.7	3.7	90.06	0.0	15.1	15.1	7.7	7.42	2.039		
1,800.0	1,800.0	1,800.0	1,800.0	3.9	3.9	90.06	0.0	15.1	15.1	7.3	7.87	1.922		
1,900.0	1,900.0	1,900.0	1,900.0	4.1	4.2	-87.88	0.0	15.1	15.0	6.7	8.29	1.805		
1,914.7	1,914.7	1,914.7	1,914.7	4.2	4.2	-90.00	0.0	15.1	14.9	6.6	8.34	1.791 CC, ES, SF		
2,000.0	1,999.8	1,999.8	1,999.8	4.3	4.4	-107.35	0.0	15.1	15.7	7.0	8.68	1.804		
2,100.0	2,099.5	2,099.5	2,099.5	4.5	4.6	-126.82	-1.3	16.2	19.8	10.8	9.05	2.191		
2,200.0	2,198.8	2,199.4	2,199.2	4.7	4.8	-135.68	-5.3	19.6	26.6	17.2	9.40	2.828		
2,300.0	2,298.1	2,299.5	2,298.9	4.9	4.9	-135.52	-12.0	25.1	32.9	23.1	9.79	3.364		
2,400.0	2,397.4	2,399.4	2,398.2	5.1	5.2	-130.67	-21.2	32.8	38.6	28.4	10.20	3.780		
2,500.0	2,496.6	2,499.2	2,497.1	5.3	5.4	-126.10	-31.0	40.9	44.3	33.7	10.65	4.166		
2,600.0	2,595.9	2,599.0	2,596.1	5.6	5.6	-122.60	-40.7	49.0	50.3	39.2	11.11	4.532		
2,700.0	2,695.2	2,698.8	2,695.1	5.8	5.8	-119.86	-50.5	57.2	56.5	44.9	11.59	4.874		
2,800.0	2,794.5	2,798.6	2,794.1	6.1	6.1	-117.65	-60.2	65.3	62.7	50.6	12.08	5.191		
2,900.0	2,893.8	2,898.3	2,893.0	6.3	6.3	-115.85	-70.0	73.4	69.0	56.5	12.59	5.483		
3,000.0	2,993.1	2,998.1	2,992.0	6.6	6.6	-114.35	-79.8	81.5	75.4	62.3	13.12	5.751		
3,100.0	3,092.4	3,097.9	3,091.0	6.9	6.9	-113.09	-89.5	89.7	81.8	68.2	13.65	5.997		
3,200.0	3,191.7	3,197.7	3,189.9	7.1	7.1	-112.01	-99.3	97.8	88.3	74.1	14.19	6.222		
3,300.0	3,291.0	3,297.5	3,288.9	7.4	7.4	-111.08	-109.0	105.9	94.8	80.0	14.74	6.430		
3,400.0	3,390.2	3,397.2	3,387.9	7.7	7.7	-110.26	-118.8	114.0	101.3	86.0	15.30	6.621		
3,500.0	3,489.5	3,497.0	3,486.8	8.0	8.0	-109.55	-128.5	122.2	107.8	91.9	15.86	6.796		
3,600.0	3,588.8	3,596.8	3,585.8	8.3	8.3	-108.91	-138.3	130.3	114.3	97.9	16.43	6.958		
3,700.0	3,688.1	3,696.6	3,684.8	8.6	8.6	-108.32	-148.0	138.4	120.8	103.8	17.00	7.106		
3,800.0	3,787.7	3,796.3	3,783.7	8.8	8.9	-106.73	-157.8	146.5	126.6	109.0	17.54	7.215		
3,900.0	3,887.5	3,896.0	3,882.5	9.0	9.2	-103.81	-167.5	154.6	131.6	113.5	18.06	7.286		
4,000.0	3,987.5	3,995.4	3,981.1	9.2	9.5	-99.70	-177.3	162.7	136.2	117.7	18.53	7.352		
4,100.0	4,087.5	4,094.6	4,079.5	9.4	9.8	76.38	-187.0	170.8	141.4	122.4	18.96	7.457		
4,200.0	4,187.5	4,193.7	4,177.9	9.6	10.1	80.79	-196.6	178.9	147.5	128.1	19.38	7.612		
4,300.0	4,287.5	4,294.2	4,277.6	9.8	10.4	84.79	-206.2	186.9	154.2	134.5	19.77	7.802		
4,400.0	4,387.5	4,397.1	4,380.0	10.0	10.6	87.67	-213.7	193.1	159.8	139.7	20.13	7.940		
4,500.0	4,487.5	4,500.6	4,483.3	10.2	10.8	89.37	-218.4	197.0	163.5	143.0	20.50	7.975		
4,600.0	4,587.5	4,604.3	4,587.0	10.4	11.0	90.00	-220.2	198.5	164.9	144.0	20.88	7.898		
4,700.0	4,687.5	4,704.8	4,687.5	10.6	11.2	90.01	-220.2	198.5	164.9	143.7	21.26	7.756		
4,800.0	4,787.5	4,804.8	4,787.5	10.8	11.4	90.01	-220.2	198.5	164.9	143.3	21.65	7.617		
4,900.0	4,887.5	4,904.8	4,887.5	11.0	11.6	90.01	-220.2	198.5	164.9	142.9	22.04	7.482		
5,000.0	4,987.5	5,004.8	4,987.5	11.2	11.8	90.01	-220.2	198.5	164.9	142.5	22.44	7.351		

CC - Min centre to center distance or convergent point, SF - min separation factor, ES - min ellipse separation

Company:	Verdad Oil & Gas Corporation	Local Co-ordinate Reference:	Well Meehl 01N-65W-24-4N
Project:	SEC.24-T1N-R65W	TVD Reference:	WELL @ 5038.5ft (RKB - 16.5')
Reference Site:	Meehl 01N-65W-24 Pad Sec.24-T01N-R65W	MD Reference:	WELL @ 5038.5ft (RKB - 16.5')
Site Error:	0.0ft	North Reference:	True
Reference Well:	Meehl 01N-65W-24-4N	Survey Calculation Method:	Minimum Curvature
Well Error:	0.0ft	Output errors are at	2.00 sigma
Reference Wellbore	Wellbore #1	Database:	landmark
Reference Design:	Plan #1 (10-17-14)	Offset TVD Reference:	Offset Datum

Offset Design												Offset Site Error:	0.0 ft
Survey Program: 0-MWD												Offset Well Error:	0.0 ft
Reference		Offset		Semi Major Axis			Distance						Warning
Measured Depth (ft)	Vertical Depth (ft)	Measured Depth (ft)	Vertical Depth (ft)	Reference (ft)	Offset (ft)	Highside Toolface (°)	Offset Wellbore Centre +N/-S (ft)	+E/-W (ft)	Between Centres (ft)	Between Ellipses (ft)	Minimum Separation (ft)	Separation Factor	
5,100.0	5,087.5	5,104.8	5,087.5	11.4	12.0	90.01	-220.2	198.5	164.9	142.1	22.83	7.224	
5,200.0	5,187.5	5,204.8	5,187.5	11.6	12.1	90.01	-220.2	198.5	164.9	141.7	23.23	7.100	
5,300.0	5,287.5	5,304.8	5,287.5	11.8	12.3	90.01	-220.2	198.5	164.9	141.3	23.63	6.981	
5,400.0	5,387.5	5,404.8	5,387.5	12.0	12.5	90.01	-220.2	198.5	164.9	140.9	24.03	6.864	
5,500.0	5,487.5	5,504.8	5,487.5	12.2	12.7	90.01	-220.2	198.5	164.9	140.5	24.43	6.751	
5,600.0	5,587.5	5,604.8	5,587.5	12.4	12.9	90.01	-220.2	198.5	164.9	140.1	24.83	6.641	
5,700.0	5,687.5	5,704.8	5,687.5	12.6	13.1	90.01	-220.2	198.5	164.9	139.7	25.24	6.535	
5,800.0	5,787.5	5,804.8	5,787.5	12.8	13.3	90.01	-220.2	198.5	164.9	139.3	25.65	6.431	
5,900.0	5,887.5	5,904.8	5,887.5	13.0	13.5	90.01	-220.2	198.5	164.9	138.9	26.05	6.330	
6,000.0	5,987.5	6,004.8	5,987.5	13.2	13.7	90.01	-220.2	198.5	164.9	138.5	26.46	6.232	
6,100.0	6,087.5	6,104.8	6,087.5	13.4	13.9	90.01	-220.2	198.5	164.9	138.0	26.87	6.137	
6,200.0	6,187.5	6,204.8	6,187.5	13.6	14.1	90.01	-220.2	198.5	164.9	137.6	27.29	6.044	
6,300.0	6,287.5	6,304.8	6,287.5	13.8	14.3	90.01	-220.2	198.5	164.9	137.2	27.70	5.954	
6,400.0	6,387.5	6,404.8	6,387.5	14.0	14.5	90.01	-220.2	198.5	164.9	136.8	28.11	5.866	
6,500.0	6,487.5	6,504.8	6,487.5	14.2	14.7	90.01	-220.2	198.5	164.9	136.4	28.53	5.781	
6,600.0	6,587.5	6,604.8	6,587.5	14.4	14.9	90.01	-220.2	198.5	164.9	136.0	28.95	5.697	
6,635.5	6,623.0	6,640.3	6,623.0	14.5	15.0	90.16	-220.2	198.5	164.9	135.9	29.07	5.673	
6,700.0	6,687.0	6,704.3	6,687.0	14.6	15.1	92.70	-220.2	198.5	165.1	135.8	29.26	5.642	
6,800.0	6,783.0	6,800.3	6,783.0	14.7	15.3	101.27	-220.2	198.5	168.7	139.3	29.32	5.752	
6,900.0	6,872.0	6,902.9	6,885.1	14.8	15.5	112.39	-211.9	198.6	180.5	151.6	28.93	6.239	
7,000.0	6,950.8	7,015.9	6,993.2	14.8	15.6	121.99	-180.0	198.7	198.3	170.4	27.96	7.093	
7,100.0	7,016.4	7,140.7	7,101.6	15.0	15.7	129.61	-118.7	199.0	218.6	192.1	26.53	8.243	
7,200.0	7,066.5	7,278.6	7,200.6	15.3	15.7	135.22	-23.1	199.4	237.7	212.7	25.03	9.498	
7,300.0	7,099.1	7,429.3	7,276.0	15.7	15.8	138.83	106.7	199.9	252.0	228.0	24.06	10.474	
7,400.0	7,113.1	7,588.9	7,312.0	16.4	16.8	140.39	261.5	200.6	258.8	234.5	24.24	10.673	
7,500.0	7,113.3	7,704.6	7,313.2	17.2	17.7	140.47	377.2	201.1	259.1	233.8	25.34	10.227	
7,600.0	7,112.9	7,804.6	7,312.8	18.1	18.6	140.48	477.2	201.5	259.2	232.6	26.63	9.734	
7,700.0	7,112.4	7,904.6	7,312.5	19.3	19.7	140.50	577.2	201.9	259.3	231.2	28.12	9.221	
7,800.0	7,111.9	8,004.6	7,312.1	20.5	20.9	140.51	677.2	202.3	259.4	229.7	29.78	8.711	
7,900.0	7,111.4	8,104.6	7,311.8	21.8	22.2	140.53	777.2	202.8	259.5	228.0	31.58	8.219	
8,000.0	7,111.0	8,204.6	7,311.4	23.2	23.6	140.55	877.2	203.2	259.6	226.1	33.49	7.752	
8,100.0	7,110.5	8,304.6	7,311.1	24.7	25.1	140.56	977.2	203.6	259.7	224.2	35.50	7.315	
8,200.0	7,110.0	8,404.6	7,310.7	26.3	26.6	140.58	1,077.2	204.0	259.8	222.2	37.60	6.911	
8,300.0	7,109.6	8,504.6	7,310.4	27.8	28.2	140.59	1,177.2	204.5	259.9	220.2	39.76	6.537	
8,400.0	7,109.1	8,604.6	7,310.0	29.5	29.8	140.61	1,277.2	204.9	260.0	218.0	41.98	6.194	
8,500.0	7,108.6	8,704.6	7,309.7	31.1	31.4	140.63	1,377.2	205.3	260.1	215.9	44.25	5.879	
8,600.0	7,108.1	8,804.6	7,309.3	32.8	33.1	140.64	1,477.2	205.7	260.2	213.7	46.56	5.589	
8,700.0	7,107.7	8,904.6	7,309.0	34.5	34.8	140.66	1,577.2	206.2	260.3	211.4	48.90	5.323	
8,800.0	7,107.2	9,004.6	7,308.6	36.2	36.5	140.67	1,677.2	206.6	260.4	209.1	51.28	5.078	
8,900.0	7,106.7	9,104.6	7,308.3	38.0	38.2	140.69	1,777.2	207.0	260.5	206.8	53.68	4.853	
9,000.0	7,106.3	9,204.6	7,307.9	39.7	40.0	140.71	1,877.2	207.4	260.6	204.5	56.11	4.645	
9,100.0	7,105.8	9,304.6	7,307.6	41.5	41.7	140.72	1,977.2	207.9	260.7	202.2	58.55	4.453	
9,200.0	7,105.3	9,404.6	7,307.2	43.3	43.5	140.74	2,077.2	208.3	260.8	199.8	61.01	4.275	
9,300.0	7,104.8	9,504.6	7,306.9	45.1	45.3	140.76	2,177.2	208.7	260.9	197.4	63.49	4.109	
9,400.0	7,104.4	9,604.6	7,306.5	46.9	47.1	140.77	2,277.1	209.1	261.0	195.0	65.98	3.956	
9,500.0	7,103.9	9,704.6	7,306.2	48.7	48.9	140.79	2,377.1	209.6	261.1	192.6	68.48	3.813	
9,600.0	7,103.4	9,804.6	7,305.9	50.6	50.7	140.80	2,477.1	210.0	261.2	190.2	70.99	3.679	
9,700.0	7,103.0	9,904.6	7,305.5	52.4	52.5	140.82	2,577.1	210.4	261.3	187.8	73.51	3.554	
9,800.0	7,102.5	10,004.6	7,305.2	54.2	54.4	140.83	2,677.1	210.8	261.4	185.4	76.04	3.438	
9,900.0	7,102.0	10,104.6	7,304.8	56.1	56.2	140.85	2,777.1	211.3	261.5	182.9	78.58	3.328	
10,000.0	7,101.5	10,204.6	7,304.5	57.9	58.0	140.87	2,877.1	211.7	261.6	180.5	81.12	3.225	
10,100.0	7,101.1	10,304.6	7,304.1	59.8	59.9	140.88	2,977.1	212.1	261.7	178.0	83.66	3.128	

CC - Min centre to center distance or convergent point, SF - min separation factor, ES - min ellipse separation

Company:	Verdad Oil & Gas Corporation	Local Co-ordinate Reference:	Well Meehl 01N-65W-24-4N
Project:	SEC.24-T1N-R65W	TVD Reference:	WELL @ 5038.5ft (RKB - 16.5')
Reference Site:	Meehl 01N-65W-24 Pad Sec.24-T01N-R65W	MD Reference:	WELL @ 5038.5ft (RKB - 16.5')
Site Error:	0.0ft	North Reference:	True
Reference Well:	Meehl 01N-65W-24-4N	Survey Calculation Method:	Minimum Curvature
Well Error:	0.0ft	Output errors are at	2.00 sigma
Reference Wellbore	Wellbore #1	Database:	landmark
Reference Design:	Plan #1 (10-17-14)	Offset TVD Reference:	Offset Datum

Offset Design Meehl 01N-65W-24 Pad Sec.24-T01N-R65W - Meehl 01N-65W-24-5C - Wellbore #1 - Plan #1 (10-17-1												Offset Site Error:	0.0 ft
Survey Program: 0-MWD												Offset Well Error:	0.0 ft
Reference		Offset		Semi Major Axis			Distance						
Measured Depth (ft)	Vertical Depth (ft)	Measured Depth (ft)	Vertical Depth (ft)	Reference (ft)	Offset (ft)	Highside Toolface (°)	Offset Wellbore Centre +N/-S (ft)	+E/-W (ft)	Between Centres (ft)	Between Ellipses (ft)	Minimum Separation (ft)	Separation Factor	Warning
10,200.0	7,100.6	10,404.6	7,303.8	61.6	61.7	140.90	3,077.1	212.5	261.8	175.6	86.22	3.036	
10,300.0	7,100.1	10,504.6	7,303.4	63.5	63.6	140.91	3,177.1	213.0	261.9	173.1	88.77	2.950	
10,400.0	7,099.7	10,604.6	7,303.1	65.3	65.4	140.93	3,277.1	213.4	262.0	170.7	91.33	2.868	
10,500.0	7,099.2	10,704.6	7,302.7	67.2	67.3	140.95	3,377.1	213.8	262.1	168.2	93.90	2.791	
10,600.0	7,098.7	10,804.6	7,302.4	69.1	69.1	140.96	3,477.1	214.3	262.2	165.7	96.47	2.718	
10,700.0	7,098.2	10,904.6	7,302.0	70.9	71.0	140.98	3,577.1	214.7	262.3	163.2	99.04	2.648	
10,800.0	7,097.8	11,004.6	7,301.7	72.8	72.9	140.99	3,677.1	215.1	262.4	160.8	101.61	2.582	
10,900.0	7,097.3	11,104.6	7,301.3	74.7	74.7	141.01	3,777.1	215.5	262.5	158.3	104.18	2.519	
11,000.0	7,096.8	11,204.6	7,301.0	76.5	76.6	141.03	3,877.1	216.0	262.6	155.8	106.76	2.460	
11,100.0	7,096.4	11,304.6	7,300.6	78.4	78.5	141.04	3,977.1	216.4	262.7	153.3	109.34	2.402	
11,200.0	7,095.9	11,404.6	7,300.3	80.3	80.4	141.06	4,077.1	216.8	262.8	150.9	111.92	2.348	
11,300.0	7,095.4	11,504.6	7,299.9	82.2	82.2	141.07	4,177.1	217.2	262.9	148.4	114.50	2.296	
11,400.0	7,094.9	11,604.6	7,299.6	84.1	84.1	141.09	4,277.1	217.7	263.0	145.9	117.08	2.246	
11,500.0	7,094.5	11,704.6	7,299.2	85.9	86.0	141.10	4,377.1	218.1	263.1	143.4	119.66	2.198	
11,600.0	7,094.0	11,804.6	7,298.9	87.8	87.9	141.12	4,477.1	218.5	263.2	140.9	122.25	2.153	
11,700.0	7,093.5	11,904.6	7,298.5	89.7	89.8	141.14	4,577.1	218.9	263.3	138.5	124.82	2.109	
11,707.1	7,093.5	11,910.2	7,298.5	89.8	89.8	141.14	4,582.8	219.0	263.3	138.3	124.96	2.107	

Company:	Verdad Oil & Gas Corporation	Local Co-ordinate Reference:	Well Meehl 01N-65W-24-4N
Project:	SEC.24-T1N-R65W	TVD Reference:	WELL @ 5038.5ft (RKB - 16.5')
Reference Site:	Meehl 01N-65W-24 Pad Sec.24-T01N-R65W	MD Reference:	WELL @ 5038.5ft (RKB - 16.5')
Site Error:	0.0ft	North Reference:	True
Reference Well:	Meehl 01N-65W-24-4N	Survey Calculation Method:	Minimum Curvature
Well Error:	0.0ft	Output errors are at	2.00 sigma
Reference Wellbore	Wellbore #1	Database:	landmark
Reference Design:	Plan #1 (10-17-14)	Offset TVD Reference:	Offset Datum

Offset Design Meehl 01N-65W-24 Pad Sec.24-T01N-R65W - Meehl 01N-65W-24-6N - Wellbore #1 - Plan #1 (10-17-1												Offset Site Error:	0.0 ft
Survey Program: 0-MWD												Offset Well Error:	0.0 ft
Measured Depth (ft)	Vertical Depth (ft)	Measured Depth (ft)	Vertical Depth (ft)	Reference (ft)	Offset (ft)	Semi Major Axis Highside Toolface (°)	Offset Wellbore Centre +N/-S (ft)	+E/-W (ft)	Between Centres (ft)	Between Ellipses (ft)	Minimum Separation (ft)	Separation Factor	Warning
0.0	0.0	0.0	0.0	0.0	0.0	90.12	-0.1	30.0	30.0				
100.0	100.0	100.0	100.0	0.1	0.1	90.12	-0.1	30.0	30.0	29.7	0.22	133.313	
200.0	200.0	200.0	200.0	0.3	0.3	90.12	-0.1	30.0	30.0	29.3	0.67	44.438	
300.0	300.0	300.0	300.0	0.6	0.6	90.12	-0.1	30.0	30.0	28.8	1.12	26.663	
400.0	400.0	400.0	400.0	0.8	0.8	90.12	-0.1	30.0	30.0	28.4	1.57	19.045	
500.0	500.0	500.0	500.0	1.0	1.0	90.12	-0.1	30.0	30.0	27.9	2.02	14.813	
600.0	600.0	600.0	600.0	1.2	1.2	90.12	-0.1	30.0	30.0	27.5	2.47	12.119	
700.0	700.0	700.0	700.0	1.5	1.5	90.12	-0.1	30.0	30.0	27.0	2.92	10.255	
800.0	800.0	800.0	800.0	1.7	1.7	90.12	-0.1	30.0	30.0	26.6	3.37	8.888	
900.0	900.0	900.0	900.0	1.9	1.9	90.12	-0.1	30.0	30.0	26.1	3.82	7.842	
1,000.0	1,000.0	1,000.0	1,000.0	2.1	2.1	90.12	-0.1	30.0	30.0	25.7	4.27	7.016	
1,100.0	1,100.0	1,100.0	1,100.0	2.4	2.4	90.12	-0.1	30.0	30.0	25.2	4.72	6.348	
1,200.0	1,200.0	1,200.0	1,200.0	2.6	2.6	90.12	-0.1	30.0	30.0	24.8	5.17	5.796	
1,300.0	1,300.0	1,300.0	1,300.0	2.8	2.8	90.12	-0.1	30.0	30.0	24.3	5.62	5.333	
1,400.0	1,400.0	1,400.0	1,400.0	3.0	3.0	90.12	-0.1	30.0	30.0	23.9	6.07	4.938 CC, ES	
1,500.0	1,500.0	1,499.1	1,499.1	3.3	3.2	91.83	-1.0	31.4	31.4	24.9	6.49	4.839	
1,600.0	1,600.0	1,597.9	1,597.8	3.5	3.4	96.12	-3.8	35.7	35.9	29.0	6.90	5.207	
1,700.0	1,700.0	1,696.3	1,695.8	3.7	3.6	101.22	-8.5	42.8	43.8	36.5	7.32	5.984	
1,800.0	1,800.0	1,794.0	1,792.8	3.9	3.8	105.87	-14.9	52.6	55.1	47.4	7.74	7.124	
1,900.0	1,900.0	1,892.9	1,890.7	4.1	4.1	-63.00	-22.6	64.2	67.9	59.8	8.13	8.356	
2,000.0	1,999.8	1,992.3	1,989.0	4.3	4.3	-63.49	-30.4	76.0	79.3	70.8	8.50	9.322	
2,100.0	2,099.5	2,091.7	2,087.5	4.5	4.6	-65.87	-38.1	87.8	89.1	80.3	8.89	10.024	
2,200.0	2,198.8	2,191.1	2,185.9	4.7	4.9	-69.41	-45.9	99.5	98.1	88.8	9.31	10.537	
2,300.0	2,298.1	2,290.5	2,284.3	4.9	5.2	-72.56	-53.6	111.3	107.3	97.6	9.76	10.999	
2,400.0	2,397.4	2,390.0	2,382.7	5.1	5.5	-75.21	-61.4	123.1	116.8	106.6	10.22	11.425	
2,500.0	2,496.6	2,489.4	2,481.1	5.3	5.8	-77.46	-69.1	134.8	126.5	115.8	10.71	11.812	
2,600.0	2,595.9	2,588.8	2,579.5	5.6	6.1	-79.39	-76.9	146.6	136.3	125.1	11.21	12.162	
2,700.0	2,695.2	2,688.2	2,677.9	5.8	6.4	-81.06	-84.6	158.4	146.3	134.6	11.72	12.478	
2,800.0	2,794.5	2,787.6	2,776.4	6.1	6.7	-82.51	-92.4	170.1	156.4	144.1	12.25	12.763	
2,900.0	2,893.8	2,887.0	2,874.8	6.3	7.0	-83.79	-100.1	181.9	166.6	153.8	12.79	13.020	
3,000.0	2,993.1	2,986.5	2,973.2	6.6	7.3	-84.92	-107.9	193.7	176.8	163.5	13.34	13.252	
3,100.0	3,092.4	3,085.9	3,071.6	6.9	7.7	-85.93	-115.6	205.4	187.1	173.2	13.90	13.462	
3,200.0	3,191.7	3,185.3	3,170.0	7.1	8.0	-86.83	-123.3	217.2	197.5	183.0	14.46	13.653	
3,300.0	3,291.0	3,284.7	3,268.4	7.4	8.3	-87.64	-131.1	229.0	207.9	192.8	15.04	13.825	
3,400.0	3,390.2	3,384.1	3,366.8	7.7	8.7	-88.37	-138.8	240.7	218.3	202.7	15.61	13.983	
3,500.0	3,489.5	3,483.5	3,465.3	8.0	9.0	-89.04	-146.6	252.5	228.8	212.6	16.20	14.126	
3,600.0	3,588.8	3,583.0	3,563.7	8.3	9.3	-89.65	-154.3	264.3	239.3	222.5	16.78	14.258	
3,700.0	3,688.1	3,682.4	3,662.1	8.6	9.7	-90.23	-162.1	276.0	249.8	232.4	17.37	14.383	
3,800.0	3,787.7	3,781.8	3,760.5	8.8	10.0	-90.34	-169.8	287.8	260.3	242.4	17.90	14.544	
3,900.0	3,887.5	3,881.2	3,858.9	9.0	10.3	-89.72	-177.6	299.5	270.9	252.5	18.39	14.730	
4,000.0	3,987.5	3,980.3	3,957.1	9.2	10.7	-88.45	-185.3	311.3	281.5	262.7	18.83	14.951	
4,100.0	4,087.5	4,079.3	4,055.0	9.4	11.0	84.64	-193.0	323.0	292.5	273.2	19.24	15.198	
4,200.0	4,187.5	4,178.3	4,153.0	9.6	11.3	86.30	-200.7	334.7	303.7	284.1	19.65	15.457	
4,300.0	4,287.5	4,283.0	4,256.7	9.8	11.7	87.86	-208.5	346.5	314.7	294.6	20.05	15.696	
4,400.0	4,387.5	4,392.5	4,365.7	10.0	11.9	89.00	-214.6	355.7	322.9	302.5	20.42	15.813	
4,500.0	4,487.5	4,502.7	4,475.7	10.2	12.2	89.68	-218.4	361.5	328.1	307.3	20.80	15.776	
4,600.0	4,587.5	4,613.3	4,586.2	10.4	12.3	89.94	-219.8	363.7	330.1	309.0	21.18	15.586	
4,700.0	4,687.5	4,714.6	4,687.5	10.6	12.5	89.94	-219.9	363.8	330.2	308.6	21.56	15.312	
4,800.0	4,787.5	4,814.6	4,787.5	10.8	12.7	89.94	-219.9	363.8	330.2	308.2	21.94	15.046	
4,900.0	4,887.5	4,914.6	4,887.5	11.0	12.8	89.94	-219.9	363.8	330.2	307.8	22.33	14.788	
5,000.0	4,987.5	5,014.6	4,987.5	11.2	13.0	89.94	-219.9	363.8	330.2	307.5	22.71	14.537	
5,100.0	5,087.5	5,114.6	5,087.5	11.4	13.2	89.94	-219.9	363.8	330.2	307.1	23.10	14.293	

CC - Min centre to center distance or convergent point, SF - min separation factor, ES - min ellipse separation

Company:	Verdad Oil & Gas Corporation	Local Co-ordinate Reference:	Well Meehl 01N-65W-24-4N
Project:	SEC.24-T1N-R65W	TVD Reference:	WELL @ 5038.5ft (RKB - 16.5')
Reference Site:	Meehl 01N-65W-24 Pad Sec.24-T01N-R65W	MD Reference:	WELL @ 5038.5ft (RKB - 16.5')
Site Error:	0.0ft	North Reference:	True
Reference Well:	Meehl 01N-65W-24-4N	Survey Calculation Method:	Minimum Curvature
Well Error:	0.0ft	Output errors are at	2.00 sigma
Reference Wellbore	Wellbore #1	Database:	landmark
Reference Design:	Plan #1 (10-17-14)	Offset TVD Reference:	Offset Datum

Offset Design												Offset Site Error:	0.0 ft
Survey Program: 0-MWD												Offset Well Error:	0.0 ft
Reference		Offset		Semi Major Axis			Distance						Warning
Measured Depth (ft)	Vertical Depth (ft)	Measured Depth (ft)	Vertical Depth (ft)	Reference (ft)	Offset (ft)	Highside Toolface (°)	Offset Wellbore Centre +N/-S (ft)	+E/-W (ft)	Between Centres (ft)	Between Ellipses (ft)	Minimum Separation (ft)	Separation Factor	
5,200.0	5,187.5	5,214.6	5,187.5	11.6	13.4	89.94	-219.9	363.8	330.2	306.7	23.49	14.056	
5,300.0	5,287.5	5,314.6	5,287.5	11.8	13.5	89.94	-219.9	363.8	330.2	306.3	23.88	13.825	
5,400.0	5,387.5	5,414.6	5,387.5	12.0	13.7	89.94	-219.9	363.8	330.2	305.9	24.28	13.601	
5,500.0	5,487.5	5,514.6	5,487.5	12.2	13.9	89.94	-219.9	363.8	330.2	305.5	24.67	13.382	
5,600.0	5,587.5	5,614.6	5,587.5	12.4	14.1	89.94	-219.9	363.8	330.2	305.1	25.07	13.170	
5,700.0	5,687.5	5,714.6	5,687.5	12.6	14.2	89.94	-219.9	363.8	330.2	304.7	25.47	12.964	
5,800.0	5,787.5	5,814.6	5,787.5	12.8	14.4	89.94	-219.9	363.8	330.2	304.3	25.87	12.763	
5,900.0	5,887.5	5,914.6	5,887.5	13.0	14.6	89.94	-219.9	363.8	330.2	303.9	26.27	12.567	
6,000.0	5,987.5	6,014.6	5,987.5	13.2	14.8	89.94	-219.9	363.8	330.2	303.5	26.68	12.377	
6,100.0	6,087.5	6,114.6	6,087.5	13.4	15.0	89.94	-219.9	363.8	330.2	303.1	27.08	12.191	
6,200.0	6,187.5	6,214.6	6,187.5	13.6	15.2	89.94	-219.9	363.8	330.2	302.7	27.49	12.011	
6,300.0	6,287.5	6,314.6	6,287.5	13.8	15.3	89.94	-219.9	363.8	330.2	302.3	27.90	11.835	
6,400.0	6,387.5	6,414.6	6,387.5	14.0	15.5	89.94	-219.9	363.8	330.2	301.9	28.31	11.664	
6,500.0	6,487.5	6,514.6	6,487.5	14.2	15.7	89.94	-219.9	363.8	330.2	301.4	28.72	11.497	
6,600.0	6,587.5	6,614.6	6,587.5	14.4	15.9	89.94	-219.9	363.8	330.2	301.0	29.13	11.335	
6,700.0	6,687.0	6,714.3	6,686.7	14.6	16.1	89.71	-211.3	363.8	330.2	300.7	29.46	11.208	
6,800.0	6,783.0	6,814.0	6,782.4	14.7	16.2	89.72	-184.1	363.9	330.2	300.5	29.65	11.136	
6,900.0	6,872.0	6,913.7	6,871.3	14.8	16.2	89.75	-139.2	364.1	330.2	300.4	29.76	11.094	
7,000.0	6,950.8	7,013.4	6,949.9	14.8	16.2	89.78	-78.1	364.4	330.2	300.3	29.90	11.043	
7,100.0	7,016.4	7,113.2	7,015.6	15.0	16.3	89.82	-3.2	364.7	330.2	300.0	30.18	10.939	
7,200.0	7,066.5	7,213.0	7,065.8	15.3	16.3	89.87	82.9	365.0	330.2	299.4	30.74	10.742	
7,300.0	7,099.1	7,312.9	7,098.7	15.7	16.4	89.93	177.1	365.4	330.2	298.5	31.63	10.438	
7,400.0	7,113.1	7,412.9	7,113.1	16.4	16.9	89.98	275.8	365.8	330.2	297.3	32.89	10.039	
7,500.0	7,113.3	7,512.9	7,113.3	17.2	17.7	90.00	375.8	366.3	330.2	295.7	34.49	9.572	
7,600.0	7,112.9	7,612.9	7,112.9	18.1	18.7	90.00	475.8	366.7	330.2	293.7	36.42	9.065	
7,700.0	7,112.4	7,712.9	7,112.4	19.3	19.8	90.00	575.8	367.1	330.2	291.5	38.63	8.546	
7,800.0	7,111.9	7,812.9	7,111.9	20.5	21.0	90.00	675.8	367.5	330.2	289.1	41.09	8.036	
7,900.0	7,111.4	7,912.9	7,111.4	21.8	22.3	90.00	775.8	367.9	330.2	286.4	43.73	7.549	
8,000.0	7,111.0	8,012.9	7,111.0	23.2	23.7	90.00	875.8	368.4	330.1	283.6	46.55	7.093	
8,100.0	7,110.5	8,112.9	7,110.5	24.7	25.1	90.00	975.8	368.8	330.1	280.7	49.50	6.670	
8,200.0	7,110.0	8,212.9	7,110.0	26.3	26.6	90.00	1,075.8	369.2	330.1	277.6	52.56	6.281	
8,300.0	7,109.6	8,312.9	7,109.6	27.8	28.2	90.00	1,175.8	369.6	330.1	274.4	55.72	5.925	
8,400.0	7,109.1	8,412.9	7,109.1	29.5	29.8	90.00	1,275.8	370.0	330.1	271.2	58.96	5.600	
8,500.0	7,108.6	8,512.9	7,108.6	31.1	31.4	90.00	1,375.8	370.4	330.1	267.9	62.26	5.303	
8,600.0	7,108.1	8,612.9	7,108.1	32.8	33.1	90.00	1,475.8	370.9	330.1	264.5	65.62	5.031	
8,700.0	7,107.7	8,712.9	7,107.7	34.5	34.8	90.00	1,575.8	371.3	330.1	261.1	69.03	4.782	
8,800.0	7,107.2	8,812.9	7,107.2	36.2	36.5	90.00	1,675.8	371.7	330.1	257.7	72.49	4.555	
8,900.0	7,106.7	8,912.9	7,106.7	38.0	38.2	90.00	1,775.8	372.1	330.1	254.2	75.97	4.345	
9,000.0	7,106.3	9,012.9	7,106.3	39.7	40.0	90.00	1,875.8	372.5	330.1	250.6	79.49	4.153	
9,100.0	7,105.8	9,112.9	7,105.8	41.5	41.8	90.00	1,975.8	373.0	330.1	247.1	83.04	3.976	
9,200.0	7,105.3	9,212.9	7,105.3	43.3	43.5	90.00	2,075.8	373.4	330.1	243.5	86.61	3.812	
9,300.0	7,104.8	9,312.9	7,104.8	45.1	45.3	90.00	2,175.8	373.8	330.1	239.9	90.20	3.660	
9,400.0	7,104.4	9,412.9	7,104.4	46.9	47.1	90.00	2,275.8	374.2	330.1	236.3	93.81	3.519	
9,500.0	7,103.9	9,512.9	7,103.9	48.7	48.9	90.00	2,375.8	374.6	330.1	232.7	97.44	3.388	
9,600.0	7,103.4	9,612.9	7,103.4	50.6	50.7	90.00	2,475.8	375.1	330.1	229.1	101.08	3.266	
9,700.0	7,103.0	9,712.9	7,103.0	52.4	52.5	90.00	2,575.8	375.5	330.1	225.4	104.74	3.152	
9,800.0	7,102.5	9,812.9	7,102.5	54.2	54.4	90.00	2,675.8	375.9	330.1	221.7	108.40	3.045	
9,900.0	7,102.0	9,912.9	7,102.0	56.1	56.2	90.00	2,775.8	376.3	330.1	218.1	112.08	2.945	
10,000.0	7,101.5	10,012.9	7,101.5	57.9	58.0	90.00	2,875.8	376.7	330.1	214.4	115.77	2.852	
10,100.0	7,101.1	10,112.9	7,101.1	59.8	59.9	90.00	2,975.7	377.1	330.1	210.7	119.47	2.763	
10,200.0	7,100.6	10,212.9	7,100.6	61.6	61.7	90.00	3,075.7	377.6	330.1	207.0	123.17	2.680	
10,300.0	7,100.1	10,312.9	7,100.1	63.5	63.6	90.00	3,175.7	378.0	330.1	203.2	126.88	2.602	

CC - Min centre to center distance or convergent point, SF - min separation factor, ES - min ellipse separation

Company:	Verdad Oil & Gas Corporation	Local Co-ordinate Reference:	Well Meehl 01N-65W-24-4N
Project:	SEC.24-T1N-R65W	TVD Reference:	WELL @ 5038.5ft (RKB - 16.5')
Reference Site:	Meehl 01N-65W-24 Pad Sec.24-T01N-R65W	MD Reference:	WELL @ 5038.5ft (RKB - 16.5')
Site Error:	0.0ft	North Reference:	True
Reference Well:	Meehl 01N-65W-24-4N	Survey Calculation Method:	Minimum Curvature
Well Error:	0.0ft	Output errors are at	2.00 sigma
Reference Wellbore	Wellbore #1	Database:	landmark
Reference Design:	Plan #1 (10-17-14)	Offset TVD Reference:	Offset Datum

Offset Design Meehl 01N-65W-24 Pad Sec.24-T01N-R65W - Meehl 01N-65W-24-6N - Wellbore #1 - Plan #1 (10-17-1												Offset Site Error:	0.0 ft
Survey Program: 0-MWD												Offset Well Error:	0.0 ft
Reference		Offset		Semi Major Axis			Distance						
Measured Depth (ft)	Vertical Depth (ft)	Measured Depth (ft)	Vertical Depth (ft)	Reference (ft)	Offset (ft)	Highside Toolface (°)	Offset Wellbore Centre +N/-S (ft)	+E/-W (ft)	Between Centres (ft)	Between Ellipses (ft)	Minimum Separation (ft)	Separation Factor	Warning
10,400.0	7,099.7	10,412.9	7,099.7	65.3	65.4	90.00	3,275.7	378.4	330.1	199.5	130.60	2.528	
10,500.0	7,099.2	10,512.9	7,099.2	67.2	67.3	90.00	3,375.7	378.8	330.1	195.8	134.32	2.458	
10,600.0	7,098.7	10,612.9	7,098.7	69.1	69.2	90.00	3,475.7	379.2	330.1	192.1	138.05	2.391	
10,700.0	7,098.2	10,712.9	7,098.2	70.9	71.0	90.00	3,575.7	379.7	330.1	188.3	141.79	2.328	
10,800.0	7,097.8	10,812.9	7,097.8	72.8	72.9	90.00	3,675.7	380.1	330.1	184.6	145.53	2.268	
10,900.0	7,097.3	10,912.9	7,097.3	74.7	74.8	90.00	3,775.7	380.5	330.1	180.8	149.28	2.211	
11,000.0	7,096.8	11,012.9	7,096.8	76.5	76.6	90.00	3,875.7	380.9	330.1	177.1	153.02	2.157	
11,100.0	7,096.4	11,112.9	7,096.4	78.4	78.5	90.00	3,975.7	381.3	330.1	173.3	156.78	2.106	
11,200.0	7,095.9	11,212.9	7,095.9	80.3	80.4	90.00	4,075.7	381.7	330.1	169.6	160.53	2.056	
11,300.0	7,095.4	11,312.9	7,095.4	82.2	82.2	90.00	4,175.7	382.2	330.1	165.8	164.29	2.009	
11,400.0	7,094.9	11,412.9	7,094.9	84.1	84.1	90.00	4,275.7	382.6	330.1	162.1	168.06	1.964	
11,500.0	7,094.5	11,512.9	7,094.5	85.9	86.0	90.00	4,375.7	383.0	330.1	158.3	171.82	1.921	
11,600.0	7,094.0	11,612.9	7,094.0	87.8	87.9	90.00	4,475.7	383.4	330.1	154.5	175.59	1.880	
11,700.0	7,093.5	11,712.9	7,093.5	89.7	89.7	90.00	4,575.7	383.8	330.1	150.8	179.31	1.841	
11,705.9	7,093.5	11,718.7	7,093.5	89.8	89.8	90.00	4,581.6	383.9	330.1	150.6	179.51	1.839	
11,707.1	7,093.5	11,719.2	7,093.5	89.8	89.8	90.00	4,582.0	383.9	330.1	150.6	179.54	1.839 SF	

Company:	Verdad Oil & Gas Corporation	Local Co-ordinate Reference:	Well Meehl 01N-65W-24-4N
Project:	SEC.24-T1N-R65W	TVD Reference:	WELL @ 5038.5ft (RKB - 16.5')
Reference Site:	Meehl 01N-65W-24 Pad Sec.24-T01N-R65W	MD Reference:	WELL @ 5038.5ft (RKB - 16.5')
Site Error:	0.0ft	North Reference:	True
Reference Well:	Meehl 01N-65W-24-4N	Survey Calculation Method:	Minimum Curvature
Well Error:	0.0ft	Output errors are at	2.00 sigma
Reference Wellbore	Wellbore #1	Database:	landmark
Reference Design:	Plan #1 (10-17-14)	Offset TVD Reference:	Offset Datum

Offset Design													Offset Site Error:	0.0 ft
Survey Program: 0-MWD													Offset Well Error:	0.0 ft
Reference		Offset		Semi Major Axis			Distance							Warning
Measured Depth (ft)	Vertical Depth (ft)	Measured Depth (ft)	Vertical Depth (ft)	Reference (ft)	Offset (ft)	Highside Toolface (°)	Offset Wellbore Centre +N/-S (ft)	+E/-W (ft)	Between Centres (ft)	Between Ellipses (ft)	Minimum Separation (ft)	Separation Factor		
0.0	0.0	0.0	0.0	0.0	0.0	90.04	0.0	45.1	45.1					
100.0	100.0	100.0	100.0	0.1	0.1	90.04	0.0	45.1	45.1	44.9	0.22	200.593		
200.0	200.0	200.0	200.0	0.3	0.3	90.04	0.0	45.1	45.1	44.4	0.67	66.864		
300.0	300.0	300.0	300.0	0.6	0.6	90.04	0.0	45.1	45.1	44.0	1.12	40.119		
400.0	400.0	400.0	400.0	0.8	0.8	90.04	0.0	45.1	45.1	43.5	1.57	28.656		
500.0	500.0	500.0	500.0	1.0	1.0	90.04	0.0	45.1	45.1	43.1	2.02	22.288		
600.0	600.0	600.0	600.0	1.2	1.2	90.04	0.0	45.1	45.1	42.6	2.47	18.236		
700.0	700.0	700.0	700.0	1.5	1.5	90.04	0.0	45.1	45.1	42.2	2.92	15.430		
800.0	800.0	800.0	800.0	1.7	1.7	90.04	0.0	45.1	45.1	41.7	3.37	13.373		
900.0	900.0	900.0	900.0	1.9	1.9	90.04	0.0	45.1	45.1	41.3	3.82	11.800		
1,000.0	1,000.0	1,000.0	1,000.0	2.1	2.1	90.04	0.0	45.1	45.1	40.8	4.27	10.558		
1,100.0	1,100.0	1,100.0	1,100.0	2.4	2.4	90.04	0.0	45.1	45.1	40.4	4.72	9.552		
1,200.0	1,200.0	1,200.0	1,200.0	2.6	2.6	90.04	0.0	45.1	45.1	39.9	5.17	8.721 CC, ES		
1,300.0	1,300.0	1,298.5	1,298.5	2.8	2.8	90.90	-0.7	46.6	46.7	41.1	5.60	8.337		
1,400.0	1,400.0	1,396.9	1,396.7	3.0	3.0	93.15	-2.8	51.2	51.4	45.4	6.01	8.558		
1,500.0	1,500.0	1,494.7	1,494.2	3.3	3.2	96.09	-6.3	58.9	59.5	53.1	6.43	9.256		
1,600.0	1,600.0	1,591.9	1,590.7	3.5	3.4	99.07	-11.1	69.5	71.0	64.1	6.85	10.356		
1,700.0	1,700.0	1,688.2	1,685.8	3.7	3.6	101.71	-17.2	82.9	85.8	78.5	7.28	11.789		
1,800.0	1,800.0	1,786.2	1,782.3	3.9	3.9	103.83	-24.2	98.4	102.9	95.2	7.71	13.341		
1,900.0	1,900.0	1,884.8	1,879.4	4.1	4.2	-66.44	-31.3	114.1	119.4	111.3	8.12	14.701		
2,000.0	1,999.8	1,983.6	1,976.7	4.3	4.5	-66.96	-38.5	129.8	134.6	126.0	8.51	15.813		
2,100.0	2,099.5	2,082.5	2,074.1	4.5	4.9	-68.60	-45.6	145.5	148.4	139.5	8.91	16.654		
2,200.0	2,198.8	2,181.5	2,171.5	4.7	5.2	-71.03	-52.7	161.2	161.5	152.2	9.35	17.282		
2,300.0	2,298.1	2,280.4	2,268.9	4.9	5.6	-73.29	-59.9	177.0	174.8	165.0	9.80	17.829		
2,400.0	2,397.4	2,379.3	2,366.3	5.1	5.9	-75.23	-67.0	192.7	188.3	178.0	10.28	18.314		
2,500.0	2,496.6	2,478.2	2,463.7	5.3	6.3	-76.90	-74.1	208.4	201.9	191.2	10.77	18.742		
2,600.0	2,595.9	2,577.0	2,561.1	5.6	6.6	-78.37	-81.2	224.1	215.8	204.5	11.29	19.119		
2,700.0	2,695.2	2,675.9	2,658.4	5.8	7.0	-79.66	-88.4	239.8	229.7	217.9	11.81	19.450		
2,800.0	2,794.5	2,774.8	2,755.8	6.1	7.4	-80.80	-95.5	255.5	243.8	231.4	12.35	19.742		
2,900.0	2,893.8	2,873.7	2,853.2	6.3	7.8	-81.81	-102.6	271.3	257.9	245.0	12.89	19.999		
3,000.0	2,993.1	2,972.6	2,950.6	6.6	8.1	-82.72	-109.8	287.0	272.1	258.6	13.45	20.227		
3,100.0	3,092.4	3,071.5	3,048.0	6.9	8.5	-83.54	-116.9	302.7	286.3	272.3	14.02	20.428		
3,200.0	3,191.7	3,170.4	3,145.3	7.1	8.9	-84.28	-124.0	318.4	300.6	286.1	14.59	20.607		
3,300.0	3,291.0	3,269.3	3,242.7	7.4	9.3	-84.96	-131.2	334.1	315.0	299.8	15.17	20.766		
3,400.0	3,390.2	3,368.2	3,340.1	7.7	9.7	-85.57	-138.3	349.9	329.4	313.6	15.75	20.908		
3,500.0	3,489.5	3,467.1	3,437.5	8.0	10.1	-86.14	-145.4	365.6	343.8	327.5	16.35	21.036		
3,600.0	3,588.8	3,566.0	3,534.9	8.3	10.4	-86.66	-152.6	381.3	358.3	341.3	16.94	21.150		
3,700.0	3,688.1	3,664.9	3,632.3	8.6	10.8	-87.20	-159.7	397.0	372.8	355.2	17.54	21.259		
3,800.0	3,787.7	3,763.9	3,729.7	8.8	11.2	-87.52	-166.8	412.7	387.4	369.3	18.08	21.428		
3,900.0	3,887.5	3,862.7	3,827.0	9.0	11.6	-87.35	-173.9	428.4	402.2	383.6	18.58	21.645		
4,000.0	3,987.5	3,961.3	3,924.1	9.2	12.0	-86.73	-181.1	444.1	417.2	398.2	19.04	21.915		
4,100.0	4,087.5	4,059.8	4,021.1	9.4	12.4	85.70	-188.2	459.8	432.5	413.0	19.47	22.217		
4,200.0	4,187.5	4,158.3	4,118.0	9.6	12.8	86.77	-195.3	475.4	447.9	428.1	19.88	22.530		
4,300.0	4,287.5	4,259.3	4,217.5	9.8	13.2	87.79	-202.5	491.4	463.5	443.2	20.30	22.834		
4,400.0	4,387.5	4,375.4	4,332.3	10.0	13.5	88.72	-209.6	507.1	476.8	456.1	20.70	23.038		
4,500.0	4,487.5	4,492.6	4,448.8	10.2	13.8	89.37	-214.9	518.6	486.6	465.5	21.09	23.072		
4,600.0	4,587.5	4,610.7	4,566.7	10.4	14.0	89.76	-218.1	525.9	492.7	471.2	21.48	22.933		
4,700.0	4,687.5	4,729.3	4,685.2	10.6	14.2	89.91	-219.4	528.7	495.1	473.2	21.88	22.627		
4,800.0	4,787.5	4,831.6	4,787.5	10.8	14.4	89.91	-219.4	528.7	495.1	472.8	22.26	22.244		
4,900.0	4,887.5	4,931.6	4,887.5	11.0	14.5	89.91	-219.4	528.7	495.1	472.5	22.64	21.872		
5,000.0	4,987.5	5,031.6	4,987.5	11.2	14.7	89.91	-219.4	528.7	495.1	472.1	23.02	21.511		
5,100.0	5,087.5	5,131.6	5,087.5	11.4	14.8	89.91	-219.4	528.7	495.1	471.7	23.40	21.159		

CC - Min centre to center distance or convergent point, SF - min separation factor, ES - min ellipse separation

Company:	Verdad Oil & Gas Corporation	Local Co-ordinate Reference:	Well Meehl 01N-65W-24-4N
Project:	SEC.24-T1N-R65W	TVD Reference:	WELL @ 5038.5ft (RKB - 16.5')
Reference Site:	Meehl 01N-65W-24 Pad Sec.24-T01N-R65W	MD Reference:	WELL @ 5038.5ft (RKB - 16.5')
Site Error:	0.0ft	North Reference:	True
Reference Well:	Meehl 01N-65W-24-4N	Survey Calculation Method:	Minimum Curvature
Well Error:	0.0ft	Output errors are at	2.00 sigma
Reference Wellbore	Wellbore #1	Database:	landmark
Reference Design:	Plan #1 (10-17-14)	Offset TVD Reference:	Offset Datum

Offset Design												Offset Site Error:	0.0 ft
Survey Program: 0-MWD												Offset Well Error:	0.0 ft
Reference		Offset		Semi Major Axis			Distance						
Measured Depth (ft)	Vertical Depth (ft)	Measured Depth (ft)	Vertical Depth (ft)	Reference (ft)	Offset (ft)	Highside Toolface (°)	Offset Wellbore Centre +N/-S (ft)	+E/-W (ft)	Between Centres (ft)	Between Ellipses (ft)	Minimum Separation (ft)	Separation Factor	Warning
5,200.0	5,187.5	5,231.6	5,187.5	11.6	15.0	89.91	-219.4	528.7	495.1	471.3	23.78	20.816	
5,300.0	5,287.5	5,331.6	5,287.5	11.8	15.1	89.91	-219.4	528.7	495.1	470.9	24.17	20.483	
5,400.0	5,387.5	5,431.6	5,387.5	12.0	15.3	89.91	-219.4	528.7	495.1	470.5	24.56	20.158	
5,500.0	5,487.5	5,531.6	5,487.5	12.2	15.4	89.91	-219.4	528.7	495.1	470.1	24.95	19.842	
5,600.0	5,587.5	5,631.6	5,587.5	12.4	15.6	89.91	-219.4	528.7	495.1	469.7	25.35	19.534	
5,700.0	5,687.5	5,731.6	5,687.5	12.6	15.8	89.91	-219.4	528.7	495.1	469.3	25.74	19.234	
5,800.0	5,787.5	5,831.6	5,787.5	12.8	15.9	89.91	-219.4	528.7	495.1	468.9	26.14	18.942	
5,900.0	5,887.5	5,931.6	5,887.5	13.0	16.1	89.91	-219.4	528.7	495.1	468.6	26.54	18.657	
6,000.0	5,987.5	6,031.6	5,987.5	13.2	16.3	89.91	-219.4	528.7	495.1	468.2	26.94	18.380	
6,100.0	6,087.5	6,131.6	6,087.5	13.4	16.4	89.91	-219.4	528.7	495.1	467.7	27.34	18.110	
6,200.0	6,187.5	6,231.6	6,187.5	13.6	16.6	89.91	-219.4	528.7	495.1	467.3	27.74	17.847	
6,300.0	6,287.5	6,331.6	6,287.5	13.8	16.8	89.91	-219.4	528.7	495.1	466.9	28.15	17.591	
6,400.0	6,387.5	6,431.6	6,387.5	14.0	17.0	89.91	-219.4	528.7	495.1	466.5	28.55	17.340	
6,500.0	6,487.5	6,531.6	6,487.5	14.2	17.1	89.91	-219.4	528.7	495.1	466.1	28.96	17.097	
6,600.0	6,587.5	6,631.6	6,587.5	14.4	17.3	89.91	-219.4	528.7	495.1	465.7	29.37	16.859	
6,700.0	6,687.0	6,731.1	6,686.5	14.6	17.5	89.68	-210.9	528.7	495.1	465.4	29.69	16.677	
6,800.0	6,783.0	6,830.6	6,782.0	14.7	17.5	89.69	-183.8	528.8	495.1	465.2	29.88	16.572	
6,900.0	6,872.0	6,930.1	6,870.7	14.8	17.6	89.72	-139.1	529.0	495.1	465.1	29.98	16.512	
7,000.0	6,950.8	7,029.7	6,949.4	14.8	17.6	89.76	-78.2	529.3	495.1	465.0	30.11	16.440	
7,100.0	7,016.4	7,129.3	7,015.1	15.0	17.6	89.81	-3.5	529.6	495.1	464.7	30.39	16.288	
7,200.0	7,066.5	7,229.0	7,065.4	15.3	17.6	89.86	82.4	529.9	495.1	464.1	30.94	16.002	
7,300.0	7,099.1	7,328.8	7,098.4	15.7	17.7	89.92	176.4	530.3	495.1	463.3	31.82	15.557	
7,400.0	7,113.1	7,428.8	7,113.0	16.4	18.1	89.98	275.1	530.8	495.1	462.0	33.07	14.971	
7,500.0	7,113.3	7,528.8	7,113.3	17.2	18.6	90.00	375.1	531.2	495.1	460.4	34.66	14.282	
7,600.0	7,112.9	7,628.8	7,112.9	18.1	19.5	90.00	475.1	531.6	495.1	458.5	36.58	13.534	
7,700.0	7,112.4	7,728.8	7,112.4	19.3	20.5	90.00	575.1	532.0	495.1	456.3	38.78	12.767	
7,800.0	7,111.9	7,828.8	7,111.9	20.5	21.7	90.00	675.1	532.4	495.1	453.9	41.21	12.012	
7,900.0	7,111.4	7,928.8	7,111.4	21.8	22.9	90.00	775.1	532.8	495.1	451.2	43.85	11.290	
8,000.0	7,111.0	8,028.8	7,111.0	23.2	24.3	90.00	875.1	533.3	495.1	448.4	46.65	10.611	
8,100.0	7,110.5	8,128.8	7,110.5	24.7	25.7	90.00	975.1	533.7	495.1	445.5	49.59	9.982	
8,200.0	7,110.0	8,228.8	7,110.0	26.3	27.2	90.00	1,075.1	534.1	495.1	442.4	52.65	9.403	
8,300.0	7,109.6	8,328.8	7,109.6	27.8	28.7	90.00	1,175.1	534.5	495.1	439.3	55.80	8.873	
8,400.0	7,109.1	8,428.8	7,109.1	29.5	30.3	90.00	1,275.1	534.9	495.1	436.0	59.03	8.387	
8,500.0	7,108.6	8,528.8	7,108.6	31.1	31.9	90.00	1,375.1	535.4	495.1	432.7	62.33	7.943	
8,600.0	7,108.1	8,628.8	7,108.1	32.8	33.5	90.00	1,475.1	535.8	495.1	429.4	65.68	7.537	
8,700.0	7,107.7	8,728.8	7,107.7	34.5	35.2	90.00	1,575.1	536.2	495.1	426.0	69.09	7.166	
8,800.0	7,107.2	8,828.8	7,107.2	36.2	36.9	90.00	1,675.1	536.6	495.1	422.5	72.53	6.825	
8,900.0	7,106.7	8,928.8	7,106.7	38.0	38.6	90.00	1,775.1	537.0	495.1	419.0	76.02	6.513	
9,000.0	7,106.3	9,028.8	7,106.3	39.7	40.3	90.00	1,875.1	537.5	495.1	415.5	79.53	6.225	
9,100.0	7,105.8	9,128.8	7,105.8	41.5	42.1	90.00	1,975.1	537.9	495.1	412.0	83.07	5.959	
9,200.0	7,105.3	9,228.8	7,105.3	43.3	43.8	90.00	2,075.1	538.3	495.1	408.4	86.64	5.714	
9,300.0	7,104.8	9,328.8	7,104.8	45.1	45.6	90.00	2,175.1	538.7	495.1	404.8	90.23	5.487	
9,400.0	7,104.4	9,428.8	7,104.4	46.9	47.4	90.00	2,275.1	539.1	495.1	401.2	93.84	5.276	
9,500.0	7,103.9	9,528.8	7,103.9	48.7	49.2	90.00	2,375.1	539.5	495.1	397.6	97.46	5.080	
9,600.0	7,103.4	9,628.8	7,103.4	50.6	51.0	90.00	2,475.1	540.0	495.1	394.0	101.10	4.897	
9,700.0	7,103.0	9,728.8	7,103.0	52.4	52.8	90.00	2,575.1	540.4	495.1	390.3	104.75	4.726	
9,800.0	7,102.5	9,828.8	7,102.5	54.2	54.6	90.00	2,675.1	540.8	495.0	386.6	108.42	4.566	
9,900.0	7,102.0	9,928.8	7,102.0	56.1	56.4	90.00	2,775.1	541.2	495.0	383.0	112.09	4.416	
10,000.0	7,101.5	10,028.8	7,101.5	57.9	58.3	90.00	2,875.1	541.6	495.0	379.3	115.78	4.276	
10,100.0	7,101.1	10,128.8	7,101.1	59.8	60.1	90.00	2,975.1	542.1	495.0	375.6	119.47	4.144	
10,200.0	7,100.6	10,228.8	7,100.6	61.6	61.9	90.00	3,075.1	542.5	495.0	371.9	123.18	4.019	
10,300.0	7,100.1	10,328.8	7,100.1	63.5	63.8	90.00	3,175.1	542.9	495.0	368.2	126.89	3.902	

CC - Min centre to center distance or convergent point, SF - min separation factor, ES - min ellipse separation

Company:	Verdad Oil & Gas Corporation	Local Co-ordinate Reference:	Well Meehl 01N-65W-24-4N
Project:	SEC.24-T1N-R65W	TVD Reference:	WELL @ 5038.5ft (RKB - 16.5')
Reference Site:	Meehl 01N-65W-24 Pad Sec.24-T01N-R65W	MD Reference:	WELL @ 5038.5ft (RKB - 16.5')
Site Error:	0.0ft	North Reference:	True
Reference Well:	Meehl 01N-65W-24-4N	Survey Calculation Method:	Minimum Curvature
Well Error:	0.0ft	Output errors are at	2.00 sigma
Reference Wellbore	Wellbore #1	Database:	landmark
Reference Design:	Plan #1 (10-17-14)	Offset TVD Reference:	Offset Datum

Offset Design													Offset Site Error:		0.0 ft
Survey Program: 0-MWD													Offset Well Error:		0.0 ft
Reference		Offset		Semi Major Axis			Distance							Warning	
Measured Depth (ft)	Vertical Depth (ft)	Measured Depth (ft)	Vertical Depth (ft)	Reference (ft)	Offset (ft)	Highside Toolface (°)	Offset Wellbore Centre +N/-S (ft)	+E/-W (ft)	Between Centres (ft)	Between Ellipses (ft)	Minimum Separation (ft)	Separation Factor			
10,400.0	7,099.7	10,428.8	7,099.7	65.3	65.6	90.00	3,275.1	543.3	495.0	364.4	130.60	3.790			
10,500.0	7,099.2	10,528.8	7,099.2	67.2	67.5	90.00	3,375.1	543.7	495.0	360.7	134.33	3.685			
10,600.0	7,098.7	10,628.8	7,098.7	69.1	69.3	90.00	3,475.0	544.2	495.0	357.0	138.05	3.586			
10,700.0	7,098.2	10,728.8	7,098.2	70.9	71.2	90.00	3,575.0	544.6	495.0	353.3	141.79	3.491			
10,800.0	7,097.8	10,828.8	7,097.8	72.8	73.1	90.00	3,675.0	545.0	495.0	349.5	145.53	3.402			
10,900.0	7,097.3	10,928.8	7,097.3	74.7	74.9	90.00	3,775.0	545.4	495.0	345.8	149.27	3.316			
11,000.0	7,096.8	11,028.8	7,096.8	76.5	76.8	90.00	3,875.0	545.8	495.0	342.0	153.02	3.235			
11,100.0	7,096.4	11,128.8	7,096.4	78.4	78.7	90.00	3,975.0	546.2	495.0	338.3	156.77	3.158			
11,200.0	7,095.9	11,228.8	7,095.9	80.3	80.5	90.00	4,075.0	546.7	495.0	334.5	160.53	3.084			
11,300.0	7,095.4	11,328.8	7,095.4	82.2	82.4	90.00	4,175.0	547.1	495.0	330.7	164.28	3.013			
11,400.0	7,094.9	11,428.8	7,094.9	84.1	84.3	90.00	4,275.0	547.5	495.0	327.0	168.05	2.946			
11,500.0	7,094.5	11,528.8	7,094.5	85.9	86.1	90.00	4,375.0	547.9	495.0	323.2	171.81	2.881			
11,600.0	7,094.0	11,628.8	7,094.0	87.8	88.0	90.00	4,475.0	548.3	495.0	319.5	175.58	2.819			
11,700.0	7,093.5	11,728.8	7,093.5	89.7	89.9	90.00	4,575.0	548.8	495.0	315.7	179.35	2.760			
11,706.7	7,093.5	11,735.4	7,093.5	89.8	90.0	90.00	4,581.7	548.8	495.0	315.4	179.60	2.756			
11,707.1	7,093.5	11,735.4	7,093.5	89.8	90.0	90.00	4,581.7	548.8	495.0	315.4	179.61	2.756 SF			

Company:	Verdad Oil & Gas Corporation	Local Co-ordinate Reference:	Well Meehl 01N-65W-24-4N
Project:	SEC.24-T1N-R65W	TVD Reference:	WELL @ 5038.5ft (RKB - 16.5')
Reference Site:	Meehl 01N-65W-24 Pad Sec.24-T01N-R65W	MD Reference:	WELL @ 5038.5ft (RKB - 16.5')
Site Error:	0.0ft	North Reference:	True
Reference Well:	Meehl 01N-65W-24-4N	Survey Calculation Method:	Minimum Curvature
Well Error:	0.0ft	Output errors are at	2.00 sigma
Reference Wellbore	Wellbore #1	Database:	landmark
Reference Design:	Plan #1 (10-17-14)	Offset TVD Reference:	Offset Datum

Offset Design													Offset Site Error:	0.0 ft
Survey Program: 0-MWD													Offset Well Error:	0.0 ft
Reference		Offset		Semi Major Axis			Distance							Warning
Measured Depth (ft)	Vertical Depth (ft)	Measured Depth (ft)	Vertical Depth (ft)	Reference (ft)	Offset (ft)	Highside Toolface (°)	Offset Wellbore Centre +N/-S (ft)	+E/-W (ft)	Between Centres (ft)	Between Ellipses (ft)	Minimum Separation (ft)	Separation Factor		
0.0	0.0	0.0	0.0	0.0	0.0	90.04	0.0	59.9	59.9					
100.0	100.0	100.0	100.0	0.1	0.1	90.04	0.0	59.9	59.9	59.7	0.22	266.626		
200.0	200.0	200.0	200.0	0.3	0.3	90.04	0.0	59.9	59.9	59.3	0.67	88.875		
300.0	300.0	300.0	300.0	0.6	0.6	90.04	0.0	59.9	59.9	58.8	1.12	53.325		
400.0	400.0	400.0	400.0	0.8	0.8	90.04	0.0	59.9	59.9	58.4	1.57	38.089		
500.0	500.0	500.0	500.0	1.0	1.0	90.04	0.0	59.9	59.9	57.9	2.02	29.625		
600.0	600.0	600.0	600.0	1.2	1.2	90.04	0.0	59.9	59.9	57.5	2.47	24.239 CC, ES		
700.0	700.0	698.0	698.0	1.5	1.4	90.55	-0.6	61.5	61.5	58.6	2.90	21.219		
800.0	800.0	795.8	795.7	1.7	1.6	91.92	-2.2	66.3	66.4	63.1	3.32	19.996		
900.0	900.0	893.2	892.6	1.9	1.9	93.81	-4.9	74.1	74.6	70.9	3.75	19.887		
1,000.0	1,000.0	989.8	988.6	2.1	2.1	95.84	-8.7	85.0	86.2	82.0	4.19	20.567		
1,100.0	1,100.0	1,085.6	1,083.3	2.4	2.4	97.76	-13.5	98.7	101.0	96.4	4.63	21.817		
1,200.0	1,200.0	1,180.3	1,176.3	2.6	2.7	99.44	-19.2	115.3	119.2	114.2	5.08	23.483		
1,300.0	1,300.0	1,276.7	1,270.5	2.8	3.1	100.86	-25.8	134.5	140.0	134.5	5.53	25.312		
1,400.0	1,400.0	1,374.4	1,366.0	3.0	3.5	101.94	-32.6	154.1	161.1	155.1	5.98	26.918		
1,500.0	1,500.0	1,472.1	1,461.5	3.3	3.9	102.77	-39.4	173.7	182.2	175.8	6.44	28.285		
1,600.0	1,600.0	1,569.8	1,557.0	3.5	4.3	103.43	-46.2	193.3	203.3	196.4	6.90	29.456		
1,700.0	1,700.0	1,667.5	1,652.5	3.7	4.7	103.96	-52.9	212.9	224.5	217.1	7.37	30.469		
1,800.0	1,800.0	1,765.3	1,748.0	3.9	5.1	104.40	-59.7	232.5	245.7	237.8	7.84	31.352		
1,900.0	1,900.0	1,863.1	1,843.6	4.1	5.6	-66.52	-66.5	252.2	266.2	257.9	8.29	32.109		
2,000.0	1,999.8	1,961.2	1,939.5	4.3	6.0	-66.80	-73.3	271.9	285.3	276.6	8.71	32.746		
2,100.0	2,099.5	2,059.4	2,035.4	4.5	6.5	-67.64	-80.1	291.6	303.2	294.1	9.15	33.127		
2,200.0	2,198.8	2,157.6	2,131.4	4.7	6.9	-69.03	-87.0	311.3	320.2	310.6	9.62	33.298		
2,300.0	2,298.1	2,255.8	2,227.4	4.9	7.4	-70.46	-93.8	331.0	337.2	327.1	10.10	33.397		
2,400.0	2,397.4	2,354.0	2,323.3	5.1	7.8	-71.75	-100.6	350.8	354.5	343.9	10.60	33.449		
2,500.0	2,496.6	2,452.2	2,419.3	5.3	8.3	-72.92	-107.4	370.5	371.9	360.8	11.11	33.663		
2,600.0	2,595.9	2,550.4	2,515.2	5.6	8.7	-73.98	-114.2	390.2	389.5	377.8	11.64	33.449		
2,700.0	2,695.2	2,648.6	2,611.2	5.8	9.2	-74.96	-121.0	409.9	407.1	394.9	12.19	33.411		
2,800.0	2,794.5	2,746.8	2,707.2	6.1	9.6	-75.85	-127.9	429.6	424.9	412.2	12.74	33.357		
2,900.0	2,893.8	2,845.0	2,803.1	6.3	10.1	-76.67	-134.7	449.3	442.8	429.5	13.30	33.289		
3,000.0	2,993.1	2,943.2	2,899.1	6.6	10.6	-77.43	-141.5	469.0	460.7	446.8	13.87	33.212		
3,100.0	3,092.4	3,041.4	2,995.0	6.9	11.0	-78.13	-148.3	488.8	478.7	464.3	14.45	33.128		
3,200.0	3,191.7	3,139.6	3,091.0	7.1	11.5	-78.78	-155.1	508.5	496.8	481.8	15.04	33.040		
3,300.0	3,291.0	3,237.8	3,186.9	7.4	11.9	-79.38	-161.9	528.2	515.0	499.3	15.63	32.949		
3,400.0	3,390.2	3,336.0	3,282.9	7.7	12.4	-79.95	-168.8	547.9	533.2	516.9	16.23	32.857		
3,500.0	3,489.5	3,434.2	3,378.9	8.0	12.8	-80.47	-175.6	567.6	551.4	534.6	16.83	32.765		
3,600.0	3,588.8	3,532.4	3,474.8	8.3	13.3	-80.96	-182.4	587.3	569.7	552.2	17.44	32.673		
3,700.0	3,688.1	3,630.6	3,570.8	8.6	13.8	-81.52	-189.2	607.0	588.0	570.0	18.04	32.587		
3,800.0	3,787.7	3,728.8	3,666.8	8.8	14.2	-82.07	-196.0	626.8	606.8	588.1	18.61	32.605		
3,900.0	3,887.5	3,845.7	3,781.3	9.0	14.7	-82.28	-203.7	648.9	624.9	605.7	19.14	32.654		
4,000.0	3,987.5	3,970.5	3,904.4	9.2	15.0	-82.20	-210.2	667.7	639.6	620.0	19.59	32.651		
4,100.0	4,087.5	4,096.5	4,029.6	9.4	15.3	89.54	-215.0	681.5	650.5	630.5	20.01	32.509		
4,200.0	4,187.5	4,223.7	4,156.4	9.6	15.6	89.80	-218.0	690.2	657.4	637.0	20.40	32.216		
4,300.0	4,287.5	4,351.4	4,284.0	9.8	15.8	89.91	-219.1	693.6	660.0	639.2	20.80	31.733		
4,400.0	4,387.5	4,454.8	4,387.5	10.0	15.9	89.91	-219.1	693.6	660.0	638.9	21.16	31.190		
4,500.0	4,487.5	4,554.8	4,487.5	10.2	16.0	89.91	-219.1	693.6	660.0	638.5	21.52	30.669		
4,600.0	4,587.5	4,654.8	4,587.5	10.4	16.1	89.91	-219.1	693.6	660.0	638.1	21.88	30.160		
4,700.0	4,687.5	4,754.8	4,687.5	10.6	16.3	89.91	-219.1	693.6	660.0	637.8	22.25	29.663		
4,800.0	4,787.5	4,854.8	4,787.5	10.8	16.4	89.91	-219.1	693.6	660.0	637.4	22.62	29.179		
4,900.0	4,887.5	4,954.8	4,887.5	11.0	16.5	89.91	-219.1	693.6	660.0	637.0	22.99	28.707		
5,000.0	4,987.5	5,054.8	4,987.5	11.2	16.7	89.91	-219.1	693.6	660.0	636.7	23.37	28.247		
5,100.0	5,087.5	5,154.8	5,087.5	11.4	16.8	89.91	-219.1	693.6	660.0	636.3	23.74	27.798		

CC - Min centre to center distance or convergent point, SF - min separation factor, ES - min ellipse separation

Company:	Verdad Oil & Gas Corporation	Local Co-ordinate Reference:	Well Meehl 01N-65W-24-4N
Project:	SEC.24-T1N-R65W	TVD Reference:	WELL @ 5038.5ft (RKB - 16.5')
Reference Site:	Meehl 01N-65W-24 Pad Sec.24-T01N-R65W	MD Reference:	WELL @ 5038.5ft (RKB - 16.5')
Site Error:	0.0ft	North Reference:	True
Reference Well:	Meehl 01N-65W-24-4N	Survey Calculation Method:	Minimum Curvature
Well Error:	0.0ft	Output errors are at	2.00 sigma
Reference Wellbore	Wellbore #1	Database:	landmark
Reference Design:	Plan #1 (10-17-14)	Offset TVD Reference:	Offset Datum

Offset Design												Offset Site Error:	0.0 ft
Survey Program: 0-MWD												Offset Well Error:	0.0 ft
Reference		Offset		Semi Major Axis			Distance						Warning
Measured Depth (ft)	Vertical Depth (ft)	Measured Depth (ft)	Vertical Depth (ft)	Reference (ft)	Offset (ft)	Highside Toolface (°)	Offset Wellbore Centre +N/-S (ft)	+E/-W (ft)	Between Centres (ft)	Between Ellipses (ft)	Minimum Separation (ft)	Separation Factor	
5,200.0	5,187.5	5,254.8	5,187.5	11.6	16.9	89.91	-219.1	693.6	660.0	635.9	24.12	27.361	
5,300.0	5,287.5	5,354.8	5,287.5	11.8	17.1	89.91	-219.1	693.6	660.0	635.5	24.51	26.934	
5,400.0	5,387.5	5,454.8	5,387.5	12.0	17.2	89.91	-219.1	693.6	660.0	635.1	24.89	26.518	
5,500.0	5,487.5	5,554.8	5,487.5	12.2	17.4	89.91	-219.1	693.6	660.0	634.8	25.28	26.113	
5,600.0	5,587.5	5,654.8	5,587.5	12.4	17.5	89.91	-219.1	693.6	660.0	634.4	25.66	25.718	
5,700.0	5,687.5	5,754.8	5,687.5	12.6	17.7	89.91	-219.1	693.6	660.0	634.0	26.05	25.333	
5,800.0	5,787.5	5,854.8	5,787.5	12.8	17.8	89.91	-219.1	693.6	660.0	633.6	26.45	24.957	
5,900.0	5,887.5	5,954.8	5,887.5	13.0	18.0	89.91	-219.1	693.6	660.0	633.2	26.84	24.591	
6,000.0	5,987.5	6,054.8	5,987.5	13.2	18.1	89.91	-219.1	693.6	660.0	632.8	27.24	24.234	
6,100.0	6,087.5	6,154.8	6,087.5	13.4	18.3	89.91	-219.1	693.6	660.0	632.4	27.63	23.885	
6,200.0	6,187.5	6,254.8	6,187.5	13.6	18.4	89.91	-219.1	693.6	660.0	632.0	28.03	23.545	
6,300.0	6,287.5	6,354.8	6,287.5	13.8	18.6	89.91	-219.1	693.6	660.0	631.6	28.43	23.214	
6,400.0	6,387.5	6,454.8	6,387.5	14.0	18.7	89.91	-219.1	693.6	660.0	631.2	28.83	22.891	
6,500.0	6,487.5	6,554.8	6,487.5	14.2	18.9	89.91	-219.1	693.6	660.0	630.8	29.24	22.575	
6,600.0	6,587.5	6,654.8	6,587.5	14.4	19.0	89.91	-219.1	693.6	660.0	630.4	29.64	22.267	
6,700.0	6,687.0	6,754.1	6,686.3	14.6	19.2	89.67	-210.7	693.7	660.0	630.1	29.96	22.032	
6,800.0	6,783.0	6,853.4	6,781.7	14.7	19.3	89.69	-183.7	693.8	660.0	629.9	30.14	21.898	
6,900.0	6,872.0	6,952.8	6,870.3	14.8	19.3	89.72	-139.1	694.0	660.0	629.8	30.25	21.822	
7,000.0	6,950.8	7,052.2	6,948.9	14.8	19.3	89.76	-78.4	694.2	660.0	629.7	30.37	21.731	
7,100.0	7,016.4	7,151.7	7,014.6	15.0	19.3	89.80	-3.9	694.5	660.0	629.4	30.65	21.537	
7,200.0	7,066.5	7,251.3	7,065.0	15.3	19.4	89.86	81.9	694.9	660.0	628.9	31.18	21.167	
7,300.0	7,099.1	7,351.1	7,098.2	15.7	19.4	89.92	175.8	695.3	660.0	628.0	32.06	20.589	
7,400.0	7,113.1	7,451.0	7,112.9	16.4	19.7	89.98	274.4	695.7	660.0	626.7	33.29	19.826	
7,500.0	7,113.3	7,551.0	7,113.3	17.2	20.1	90.00	374.4	696.1	660.0	625.2	34.88	18.921	
7,600.0	7,112.9	7,651.0	7,112.9	18.1	20.8	90.00	474.4	696.6	660.0	623.3	36.78	17.944	
7,700.0	7,112.4	7,751.0	7,112.4	19.3	21.7	90.00	574.4	697.0	660.1	621.1	38.97	16.938	
7,800.0	7,111.9	7,851.0	7,111.9	20.5	22.7	90.00	674.4	697.4	660.1	618.7	41.39	15.946	
7,900.0	7,111.4	7,951.0	7,111.4	21.8	23.9	90.00	774.4	697.8	660.1	616.0	44.02	14.995	
8,000.0	7,111.0	8,051.0	7,111.0	23.2	25.1	90.00	874.4	698.3	660.1	613.3	46.81	14.101	
8,100.0	7,110.5	8,151.0	7,110.5	24.7	26.5	90.00	974.4	698.7	660.1	610.3	49.74	13.271	
8,200.0	7,110.0	8,251.0	7,110.0	26.3	27.9	90.00	1,074.4	699.1	660.1	607.3	52.78	12.506	
8,300.0	7,109.6	8,351.0	7,109.6	27.8	29.4	90.00	1,174.4	699.5	660.1	604.2	55.92	11.804	
8,400.0	7,109.1	8,451.0	7,109.1	29.5	30.9	90.00	1,274.4	700.0	660.1	600.9	59.14	11.161	
8,500.0	7,108.6	8,551.0	7,108.6	31.1	32.5	90.00	1,374.4	700.4	660.1	597.7	62.43	10.573	
8,600.0	7,108.1	8,651.0	7,108.1	32.8	34.1	90.00	1,474.4	700.8	660.1	594.3	65.78	10.034	
8,700.0	7,107.7	8,751.0	7,107.7	34.5	35.8	90.00	1,574.4	701.2	660.1	590.9	69.18	9.542	
8,800.0	7,107.2	8,851.0	7,107.2	36.2	37.4	90.00	1,674.4	701.7	660.1	587.5	72.62	9.090	
8,900.0	7,106.7	8,951.0	7,106.7	38.0	39.1	90.00	1,774.4	702.1	660.1	584.0	76.10	8.674	
9,000.0	7,106.3	9,051.0	7,106.3	39.7	40.8	90.00	1,874.4	702.5	660.1	580.5	79.61	8.292	
9,100.0	7,105.8	9,151.0	7,105.8	41.5	42.6	90.00	1,974.4	702.9	660.1	577.0	83.15	7.939	
9,200.0	7,105.3	9,251.0	7,105.3	43.3	44.3	90.00	2,074.4	703.4	660.1	573.4	86.71	7.613	
9,300.0	7,104.8	9,351.0	7,104.8	45.1	46.1	90.00	2,174.3	703.8	660.1	569.8	90.30	7.311	
9,400.0	7,104.4	9,451.0	7,104.4	46.9	47.8	90.00	2,274.3	704.2	660.1	566.2	93.90	7.030	
9,500.0	7,103.9	9,551.0	7,103.9	48.7	49.6	90.00	2,374.3	704.6	660.1	562.6	97.52	6.769	
9,600.0	7,103.4	9,651.0	7,103.4	50.6	51.4	90.00	2,474.3	705.0	660.1	559.0	101.16	6.526	
9,700.0	7,103.0	9,751.0	7,103.0	52.4	53.2	90.00	2,574.3	705.5	660.1	555.3	104.81	6.299	
9,800.0	7,102.5	9,851.0	7,102.5	54.2	55.0	90.00	2,674.3	705.9	660.1	551.7	108.47	6.086	
9,900.0	7,102.0	9,951.0	7,102.0	56.1	56.8	90.00	2,774.3	706.3	660.1	548.0	112.14	5.887	
10,000.0	7,101.5	10,051.0	7,101.5	57.9	58.6	90.00	2,874.3	706.7	660.2	544.3	115.83	5.700	
10,100.0	7,101.1	10,151.0	7,101.1	59.8	60.4	90.00	2,974.3	707.2	660.2	540.6	119.52	5.524	
10,200.0	7,100.6	10,251.0	7,100.6	61.6	62.3	90.00	3,074.3	707.6	660.2	536.9	123.22	5.358	
10,300.0	7,100.1	10,351.0	7,100.1	63.5	64.1	90.00	3,174.3	708.0	660.2	533.2	126.93	5.201	

CC - Min centre to center distance or convergent point, SF - min separation factor, ES - min ellipse separation

Company:	Verdad Oil & Gas Corporation	Local Co-ordinate Reference:	Well Meehl 01N-65W-24-4N
Project:	SEC.24-T1N-R65W	TVD Reference:	WELL @ 5038.5ft (RKB - 16.5')
Reference Site:	Meehl 01N-65W-24 Pad Sec.24-T01N-R65W	MD Reference:	WELL @ 5038.5ft (RKB - 16.5')
Site Error:	0.0ft	North Reference:	True
Reference Well:	Meehl 01N-65W-24-4N	Survey Calculation Method:	Minimum Curvature
Well Error:	0.0ft	Output errors are at	2.00 sigma
Reference Wellbore	Wellbore #1	Database:	landmark
Reference Design:	Plan #1 (10-17-14)	Offset TVD Reference:	Offset Datum

Offset Design Meehl 01N-65W-24 Pad Sec.24-T01N-R65W - Meehl 01N-65W-24-8N - Wellbore #1 - Plan #1 (10-17-1												Offset Site Error:	0.0 ft
Survey Program: 0-MWD												Offset Well Error:	0.0 ft
Reference		Offset		Semi Major Axis			Distance						
Measured Depth (ft)	Vertical Depth (ft)	Measured Depth (ft)	Vertical Depth (ft)	Reference (ft)	Offset (ft)	Highside Toolface (°)	Offset Wellbore Centre +N/-S (ft)	+E/-W (ft)	Between Centres (ft)	Between Ellipses (ft)	Minimum Separation (ft)	Separation Factor	Warning
10,400.0	7,099.7	10,451.0	7,099.7	65.3	65.9	90.00	3,274.3	708.4	660.2	529.5	130.64	5.053	
10,500.0	7,099.2	10,551.0	7,099.2	67.2	67.8	90.00	3,374.3	708.9	660.2	525.8	134.36	4.913	
10,600.0	7,098.7	10,651.0	7,098.7	69.1	69.6	90.00	3,474.3	709.3	660.2	522.1	138.09	4.781	
10,700.0	7,098.2	10,751.0	7,098.2	70.9	71.5	90.00	3,574.3	709.7	660.2	518.4	141.82	4.655	
10,800.0	7,097.8	10,851.0	7,097.8	72.8	73.3	90.00	3,674.3	710.1	660.2	514.6	145.56	4.535	
10,900.0	7,097.3	10,951.0	7,097.3	74.7	75.2	90.00	3,774.3	710.6	660.2	510.9	149.30	4.422	
11,000.0	7,096.8	11,051.0	7,096.8	76.5	77.0	90.00	3,874.3	711.0	660.2	507.1	153.05	4.314	
11,100.0	7,096.4	11,151.0	7,096.4	78.4	78.9	90.00	3,974.3	711.4	660.2	503.4	156.80	4.210	
11,200.0	7,095.9	11,251.0	7,095.9	80.3	80.8	90.00	4,074.3	711.8	660.2	499.7	160.55	4.112	
11,300.0	7,095.4	11,351.0	7,095.4	82.2	82.6	90.00	4,174.3	712.3	660.2	495.9	164.31	4.018	
11,400.0	7,094.9	11,451.0	7,094.9	84.1	84.5	90.00	4,274.3	712.7	660.2	492.1	168.07	3.928	
11,500.0	7,094.5	11,551.0	7,094.5	85.9	86.4	90.00	4,374.3	713.1	660.2	488.4	171.84	3.842	
11,600.0	7,094.0	11,651.0	7,094.0	87.8	88.2	90.00	4,474.3	713.5	660.2	484.6	175.60	3.760	
11,700.0	7,093.5	11,751.0	7,093.5	89.7	90.1	90.00	4,574.3	714.0	660.2	480.9	179.37	3.681	
11,700.0	7,093.5	11,751.0	7,093.5	89.7	90.1	90.00	4,574.3	714.0	660.2	480.9	179.37	3.681	
11,707.1	7,093.5	11,757.6	7,093.5	89.8	90.2	90.00	4,581.0	714.0	660.2	480.6	179.63	3.676 SF	

Company:	Verdad Oil & Gas Corporation	Local Co-ordinate Reference:	Well Meehl 01N-65W-24-4N
Project:	SEC.24-T1N-R65W	TVD Reference:	WELL @ 5038.5ft (RKB - 16.5')
Reference Site:	Meehl 01N-65W-24 Pad Sec.24-T01N-R65W	MD Reference:	WELL @ 5038.5ft (RKB - 16.5')
Site Error:	0.0ft	North Reference:	True
Reference Well:	Meehl 01N-65W-24-4N	Survey Calculation Method:	Minimum Curvature
Well Error:	0.0ft	Output errors are at	2.00 sigma
Reference Wellbore	Wellbore #1	Database:	landmark
Reference Design:	Plan #1 (10-17-14)	Offset TVD Reference:	Offset Datum

Offset Design													Offset Site Error:	0.0 ft
Survey Program: 0-MWD													Offset Well Error:	0.0 ft
Reference		Offset		Semi Major Axis			Distance							Warning
Measured Depth (ft)	Vertical Depth (ft)	Measured Depth (ft)	Vertical Depth (ft)	Reference (ft)	Offset (ft)	Highside Toolface (°)	Offset Wellbore Centre +N/-S (ft)	+E/-W (ft)	Between Centres (ft)	Between Ellipses (ft)	Minimum Separation (ft)	Separation Factor		
0.0	0.0	0.0	0.0	0.0	0.0	90.04	-0.1	75.1	75.1					
100.0	100.0	100.0	100.0	0.1	0.1	90.04	-0.1	75.1	75.1	74.8	0.22	333.906		
200.0	200.0	200.0	200.0	0.3	0.3	90.04	-0.1	75.1	75.1	74.4	0.67	111.302 CC, ES		
300.0	300.0	297.5	297.5	0.6	0.5	90.37	-0.5	76.6	76.7	75.6	1.11	69.328		
400.0	400.0	394.8	394.6	0.8	0.8	91.29	-1.8	81.4	81.6	80.1	1.54	52.837		
500.0	500.0	491.6	491.1	1.0	1.0	92.59	-4.0	89.3	89.9	87.9	1.99	45.079		
600.0	600.0	587.8	586.6	1.2	1.3	94.05	-7.1	100.3	101.4	99.0	2.45	41.435		
700.0	700.0	683.1	680.8	1.5	1.6	95.50	-11.0	114.2	116.3	113.4	2.91	40.012		
800.0	800.0	777.3	773.4	1.7	1.9	96.82	-15.7	130.9	134.5	131.1	3.37	39.907		
900.0	900.0	870.3	864.2	1.9	2.3	97.98	-21.1	150.2	155.9	152.0	3.84	40.629		
1,000.0	1,000.0	962.8	953.8	2.1	2.8	98.98	-27.2	172.2	180.4	176.1	4.31	41.836		
1,100.0	1,100.0	1,059.4	1,047.1	2.4	3.3	99.81	-33.9	196.2	206.0	201.2	4.79	43.052		
1,200.0	1,200.0	1,156.0	1,140.5	2.6	3.8	100.45	-40.6	220.2	231.7	226.4	5.26	44.045		
1,300.0	1,300.0	1,252.6	1,233.8	2.8	4.3	100.97	-47.3	244.2	257.4	251.7	5.74	44.841		
1,400.0	1,400.0	1,349.2	1,327.2	3.0	4.9	101.39	-54.0	268.2	283.1	276.9	6.22	45.490		
1,500.0	1,500.0	1,445.8	1,420.5	3.3	5.4	101.74	-60.7	292.2	308.8	302.1	6.71	46.028		
1,600.0	1,600.0	1,542.5	1,513.9	3.5	5.9	102.04	-67.4	316.2	334.6	327.4	7.20	46.480		
1,700.0	1,700.0	1,639.1	1,607.3	3.7	6.4	102.30	-74.2	340.2	360.3	352.6	7.69	46.864		
1,800.0	1,800.0	1,735.7	1,700.6	3.9	7.0	102.52	-80.9	364.2	386.0	377.9	8.18	47.194		
1,900.0	1,900.0	1,832.5	1,794.1	4.1	7.5	-68.36	-87.6	388.2	411.2	402.5	8.65	47.560		
2,000.0	1,999.8	1,929.5	1,887.9	4.3	8.0	-68.38	-94.3	412.3	435.1	426.0	9.09	47.857		
2,100.0	2,099.5	2,026.7	1,981.8	4.5	8.6	-68.79	-101.1	436.4	457.8	448.2	9.55	47.926		
2,200.0	2,198.8	2,123.9	2,075.7	4.7	9.1	-69.71	-107.8	460.5	479.6	469.6	10.03	47.805		
2,300.0	2,298.1	2,221.1	2,169.6	4.9	9.7	-70.74	-114.5	484.7	501.5	490.9	10.53	47.620		
2,400.0	2,397.4	2,318.3	2,263.5	5.1	10.2	-71.68	-121.3	508.8	523.5	512.4	11.05	47.394		
2,500.0	2,496.6	2,415.5	2,357.4	5.3	10.7	-72.55	-128.0	533.0	545.6	534.1	11.57	47.140		
2,600.0	2,595.9	2,512.7	2,451.3	5.6	11.3	-73.36	-134.8	557.1	567.9	555.8	12.12	46.867		
2,700.0	2,695.2	2,609.9	2,545.2	5.8	11.8	-74.10	-141.5	581.2	590.2	577.6	12.67	46.583		
2,800.0	2,794.5	2,707.1	2,639.1	6.1	12.3	-74.78	-148.3	605.4	612.7	599.4	13.23	46.292		
2,900.0	2,893.8	2,804.3	2,733.0	6.3	12.9	-75.42	-155.0	629.5	635.2	621.4	13.81	46.001		
3,000.0	2,993.1	2,901.5	2,826.9	6.6	13.4	-76.02	-161.8	653.6	657.8	643.4	14.39	45.711		
3,100.0	3,092.4	2,998.6	2,920.8	6.9	14.0	-76.58	-168.5	677.8	680.4	665.4	14.98	45.426		
3,200.0	3,191.7	3,095.8	3,014.8	7.1	14.5	-77.10	-175.3	701.9	703.1	687.5	15.57	45.147		
3,300.0	3,291.0	3,193.0	3,108.7	7.4	15.0	-77.58	-182.0	726.0	725.9	709.7	16.18	44.875		
3,400.0	3,390.2	3,290.2	3,202.6	7.7	15.6	-78.04	-188.8	750.2	748.7	731.9	16.78	44.611		
3,500.0	3,489.5	3,400.3	3,309.0	8.0	16.2	-78.54	-196.3	777.1	771.2	753.8	17.42	44.270		
3,600.0	3,588.8	3,533.4	3,438.9	8.3	16.6	-79.18	-204.1	805.1	790.3	772.2	18.06	43.749		
3,700.0	3,688.1	3,668.4	3,571.9	8.6	17.1	-79.98	-210.4	827.6	805.0	786.3	18.70	43.051		
3,800.0	3,787.7	3,805.0	3,707.4	8.8	17.4	-80.75	-215.0	844.1	815.7	796.4	19.26	42.344		
3,900.0	3,887.5	3,942.6	3,844.6	9.0	17.7	-81.22	-217.9	854.5	822.3	802.6	19.75	41.630		
4,000.0	3,987.5	4,080.9	3,982.7	9.2	17.8	-81.40	-219.0	858.5	824.9	804.7	20.18	40.881		
4,100.0	4,087.5	4,185.7	4,087.5	9.4	17.9	89.92	-219.1	858.6	825.0	804.4	20.55	40.146		
4,200.0	4,187.5	4,285.7	4,187.5	9.6	18.0	89.92	-219.1	858.6	825.0	804.1	20.89	39.488		
4,300.0	4,287.5	4,385.7	4,287.5	9.8	18.1	89.92	-219.1	858.6	825.0	803.7	21.24	38.844		
4,400.0	4,387.5	4,485.7	4,387.5	10.0	18.3	89.92	-219.1	858.6	825.0	803.4	21.59	38.215		
4,500.0	4,487.5	4,585.7	4,487.5	10.2	18.4	89.92	-219.1	858.6	825.0	803.0	21.94	37.599		
4,600.0	4,587.5	4,685.7	4,587.5	10.4	18.5	89.92	-219.1	858.6	825.0	802.7	22.30	36.997		
4,700.0	4,687.5	4,785.7	4,687.5	10.6	18.6	89.92	-219.1	858.6	825.0	802.3	22.66	36.409		
4,800.0	4,787.5	4,885.7	4,787.5	10.8	18.7	89.92	-219.1	858.6	825.0	801.9	23.02	35.835		
4,900.0	4,887.5	4,985.7	4,887.5	11.0	18.8	89.92	-219.1	858.6	825.0	801.6	23.39	35.274		
5,000.0	4,987.5	5,085.7	4,987.5	11.2	18.9	89.92	-219.1	858.6	825.0	801.2	23.76	34.726		
5,100.0	5,087.5	5,185.7	5,087.5	11.4	19.1	89.92	-219.1	858.6	825.0	800.8	24.13	34.192		

CC - Min centre to center distance or convergent point, SF - min separation factor, ES - min ellipse separation

Company:	Verdad Oil & Gas Corporation	Local Co-ordinate Reference:	Well Meehl 01N-65W-24-4N
Project:	SEC.24-T1N-R65W	TVD Reference:	WELL @ 5038.5ft (RKB - 16.5')
Reference Site:	Meehl 01N-65W-24 Pad Sec.24-T01N-R65W	MD Reference:	WELL @ 5038.5ft (RKB - 16.5')
Site Error:	0.0ft	North Reference:	True
Reference Well:	Meehl 01N-65W-24-4N	Survey Calculation Method:	Minimum Curvature
Well Error:	0.0ft	Output errors are at	2.00 sigma
Reference Wellbore	Wellbore #1	Database:	landmark
Reference Design:	Plan #1 (10-17-14)	Offset TVD Reference:	Offset Datum

Offset Design		Meehl 01N-65W-24 Pad Sec.24-T01N-R65W - Meehl 01N-65W-24-9C - Wellbore #1 - Plan #1 (10-17-1										Offset Site Error:		0.0 ft
Survey Program: 0-MWD												Offset Well Error:		0.0 ft
Reference		Offset		Semi Major Axis		Distance							Warning	
Measured Depth (ft)	Vertical Depth (ft)	Measured Depth (ft)	Vertical Depth (ft)	Reference (ft)	Offset (ft)	Highside Toolface (°)	Offset Wellbore Centre +N/-S (ft)	+E/-W (ft)	Between Centres (ft)	Between Ellipses (ft)	Minimum Separation (ft)	Separation Factor		
5,200.0	5,187.5	5,285.7	5,187.5	11.6	19.2	89.92	-219.1	858.6	825.0	800.5	24.50	33.670		
5,300.0	5,287.5	5,385.7	5,287.5	11.8	19.3	89.92	-219.1	858.6	825.0	800.1	24.88	33.160		
5,400.0	5,387.5	5,485.7	5,387.5	12.0	19.4	89.92	-219.1	858.6	825.0	799.7	25.26	32.663		
5,500.0	5,487.5	5,585.7	5,487.5	12.2	19.6	89.92	-219.1	858.6	825.0	799.3	25.64	32.178		
5,600.0	5,587.5	5,685.7	5,587.5	12.4	19.7	89.92	-219.1	858.6	825.0	798.9	26.02	31.704		
5,700.0	5,687.5	5,785.7	5,687.5	12.6	19.8	89.92	-219.1	858.6	825.0	798.5	26.41	31.241		
5,800.0	5,787.5	5,885.7	5,787.5	12.8	20.0	89.92	-219.1	858.6	825.0	798.2	26.79	30.790		
5,900.0	5,887.5	5,985.7	5,887.5	13.0	20.1	89.92	-219.1	858.6	825.0	797.8	27.18	30.349		
6,000.0	5,987.5	6,085.7	5,987.5	13.2	20.2	89.92	-219.1	858.6	825.0	797.4	27.57	29.919		
6,100.0	6,087.5	6,185.7	6,087.5	13.4	20.4	89.92	-219.1	858.6	825.0	797.0	27.97	29.499		
6,200.0	6,187.5	6,285.7	6,187.5	13.6	20.5	89.92	-219.1	858.6	825.0	796.6	28.36	29.089		
6,300.0	6,287.5	6,385.7	6,287.5	13.8	20.7	89.92	-219.1	858.6	825.0	796.2	28.76	28.689		
6,400.0	6,387.5	6,485.7	6,387.5	14.0	20.8	89.92	-219.1	858.6	825.0	795.8	29.15	28.298		
6,500.0	6,487.5	6,585.7	6,487.5	14.2	20.9	89.92	-219.1	858.6	825.0	795.4	29.55	27.916		
6,600.0	6,587.5	6,685.7	6,587.5	14.4	21.1	89.92	-219.1	858.6	825.0	795.0	29.95	27.543		
6,671.2	6,658.5	6,756.7	6,658.5	14.6	21.2	90.00	-219.1	858.6	824.9	794.8	30.17	27.342		
6,700.0	6,687.0	6,785.1	6,687.0	14.6	21.2	90.27	-219.1	858.6	824.9	794.7	30.26	27.265		
6,800.0	6,783.0	6,881.2	6,783.0	14.7	21.4	92.03	-219.1	858.6	825.5	795.1	30.41	27.143		
6,900.0	6,872.0	6,970.2	6,872.0	14.8	21.5	94.48	-219.1	858.6	828.5	798.0	30.47	27.191		
7,000.0	6,950.8	7,073.5	6,974.9	14.8	21.7	97.72	-212.2	858.6	835.6	805.2	30.46	27.432		
7,100.0	7,016.4	7,215.7	7,107.7	15.0	21.7	101.36	-163.2	858.8	844.7	814.4	30.39	27.793		
7,200.0	7,066.5	7,399.2	7,241.2	15.3	21.7	104.20	-39.4	859.3	851.7	821.2	30.48	27.940		
7,300.0	7,099.1	7,606.9	7,311.8	15.7	21.8	104.39	153.6	860.1	852.2	820.8	31.40	27.142		
7,400.0	7,113.1	7,727.8	7,313.5	16.4	22.0	103.64	274.4	860.6	848.9	816.3	32.63	26.017		
7,447.8	7,114.7	7,775.6	7,313.4	16.7	22.1	103.53	322.1	860.8	848.5	815.2	33.32	25.470		
7,500.0	7,113.3	7,827.8	7,313.2	17.2	22.3	103.62	374.4	861.1	848.8	814.8	34.08	24.908		
7,600.0	7,112.9	7,927.8	7,312.8	18.1	22.9	103.63	474.4	861.5	848.9	813.0	35.88	23.657		
7,700.0	7,112.4	8,027.8	7,312.5	19.3	23.6	103.63	574.4	861.9	848.9	810.9	37.97	22.359		
7,800.0	7,111.9	8,127.8	7,312.1	20.5	24.4	103.64	674.4	862.3	848.9	808.6	40.29	21.069		
7,900.0	7,111.4	8,227.8	7,311.8	21.8	25.5	103.65	774.4	862.8	849.0	806.1	42.82	19.828		
8,000.0	7,111.0	8,327.8	7,311.4	23.2	26.6	103.66	874.4	863.2	849.0	803.5	45.51	18.656		
8,100.0	7,110.5	8,427.8	7,311.1	24.7	27.9	103.67	974.4	863.6	849.0	800.7	48.34	17.565		
8,200.0	7,110.0	8,527.8	7,310.7	26.3	29.2	103.67	1,074.4	864.0	849.1	797.8	51.28	16.557		
8,300.0	7,109.6	8,627.8	7,310.4	27.8	30.6	103.68	1,174.4	864.5	849.1	794.8	54.32	15.630		
8,400.0	7,109.1	8,727.8	7,310.0	29.5	32.1	103.69	1,274.4	864.9	849.1	791.7	57.45	14.781		
8,500.0	7,108.6	8,827.8	7,309.7	31.1	33.6	103.70	1,374.4	865.3	849.2	788.5	60.64	14.003		
8,600.0	7,108.1	8,927.8	7,309.3	32.8	35.1	103.71	1,474.4	865.7	849.2	785.3	63.89	13.291		
8,700.0	7,107.7	9,027.8	7,309.0	34.5	36.7	103.71	1,574.4	866.2	849.2	782.0	67.19	12.639		
8,800.0	7,107.2	9,127.8	7,308.6	36.2	38.4	103.72	1,674.4	866.6	849.3	778.7	70.54	12.040		
8,900.0	7,106.7	9,227.8	7,308.3	38.0	40.0	103.73	1,774.4	867.0	849.3	775.4	73.92	11.490		
9,000.0	7,106.3	9,327.8	7,307.9	39.7	41.7	103.74	1,874.4	867.4	849.3	772.0	77.33	10.983		
9,100.0	7,105.8	9,427.8	7,307.6	41.5	43.4	103.75	1,974.4	867.8	849.4	768.6	80.77	10.516		
9,200.0	7,105.3	9,527.8	7,307.2	43.3	45.1	103.75	2,074.4	868.3	849.4	765.2	84.24	10.083		
9,300.0	7,104.8	9,627.8	7,306.9	45.1	46.8	103.76	2,174.4	868.7	849.4	761.7	87.72	9.683		
9,400.0	7,104.4	9,727.8	7,306.5	46.9	48.5	103.77	2,274.4	869.1	849.5	758.2	91.23	9.311		
9,500.0	7,103.9	9,827.8	7,306.2	48.7	50.3	103.78	2,374.4	869.5	849.5	754.7	94.75	8.965		
9,600.0	7,103.4	9,927.8	7,305.9	50.6	52.0	103.79	2,474.4	870.0	849.5	751.2	98.29	8.643		
9,700.0	7,103.0	10,027.8	7,305.5	52.4	53.8	103.79	2,574.3	870.4	849.6	747.7	101.84	8.342		
9,800.0	7,102.5	10,127.8	7,305.2	54.2	55.6	103.80	2,674.3	870.8	849.6	744.2	105.41	8.060		
9,900.0	7,102.0	10,227.8	7,304.8	56.1	57.4	103.81	2,774.3	871.2	849.6	740.6	108.98	7.796		
10,000.0	7,101.5	10,327.8	7,304.5	57.9	59.2	103.82	2,874.3	871.7	849.7	737.1	112.57	7.548		
10,100.0	7,101.1	10,427.8	7,304.1	59.8	61.0	103.82	2,974.3	872.1	849.7	733.5	116.16	7.315		

CC - Min centre to center distance or convergent point, SF - min separation factor, ES - min ellipse separation

Company:	Verdad Oil & Gas Corporation	Local Co-ordinate Reference:	Well Meehl 01N-65W-24-4N
Project:	SEC.24-T1N-R65W	TVD Reference:	WELL @ 5038.5ft (RKB - 16.5')
Reference Site:	Meehl 01N-65W-24 Pad Sec.24-T01N-R65W	MD Reference:	WELL @ 5038.5ft (RKB - 16.5')
Site Error:	0.0ft	North Reference:	True
Reference Well:	Meehl 01N-65W-24-4N	Survey Calculation Method:	Minimum Curvature
Well Error:	0.0ft	Output errors are at	2.00 sigma
Reference Wellbore	Wellbore #1	Database:	landmark
Reference Design:	Plan #1 (10-17-14)	Offset TVD Reference:	Offset Datum

Offset Design Meehl 01N-65W-24 Pad Sec.24-T01N-R65W - Meehl 01N-65W-24-9C - Wellbore #1 - Plan #1 (10-17-1												Offset Site Error:	0.0 ft
Survey Program: 0-MWD												Offset Well Error:	0.0 ft
Reference		Offset		Semi Major Axis			Distance						
Measured Depth (ft)	Vertical Depth (ft)	Measured Depth (ft)	Vertical Depth (ft)	Reference (ft)	Offset (ft)	Highside Toolface (°)	Offset Wellbore Centre +N/-S (ft)	+E/-W (ft)	Between Centres (ft)	Between Ellipses (ft)	Minimum Separation (ft)	Separation Factor	Warning
10,200.0	7,100.6	10,527.8	7,303.8	61.6	62.8	103.83	3,074.3	872.5	849.7	730.0	119.76	7.095	
10,300.0	7,100.1	10,627.8	7,303.4	63.5	64.6	103.84	3,174.3	872.9	849.8	726.4	123.37	6.888	
10,400.0	7,099.7	10,727.8	7,303.1	65.3	66.5	103.85	3,274.3	873.4	849.8	722.8	126.99	6.692	
10,500.0	7,099.2	10,827.8	7,302.7	67.2	68.3	103.86	3,374.3	873.8	849.8	719.2	130.61	6.507	
10,600.0	7,098.7	10,927.8	7,302.4	69.1	70.1	103.86	3,474.3	874.2	849.9	715.6	134.24	6.331	
10,700.0	7,098.2	11,027.8	7,302.0	70.9	72.0	103.87	3,574.3	874.6	849.9	712.0	137.87	6.164	
10,800.0	7,097.8	11,127.8	7,301.7	72.8	73.8	103.88	3,674.3	875.1	849.9	708.4	141.51	6.006	
10,900.0	7,097.3	11,227.8	7,301.3	74.7	75.6	103.89	3,774.3	875.5	850.0	704.8	145.15	5.856	
11,000.0	7,096.8	11,327.8	7,301.0	76.5	77.5	103.90	3,874.3	875.9	850.0	701.2	148.80	5.712	
11,100.0	7,096.4	11,427.8	7,300.6	78.4	79.3	103.90	3,974.3	876.3	850.0	697.6	152.45	5.576	
11,200.0	7,095.9	11,527.8	7,300.3	80.3	81.2	103.91	4,074.3	876.8	850.1	694.0	156.10	5.446	
11,300.0	7,095.4	11,627.8	7,299.9	82.2	83.1	103.92	4,174.3	877.2	850.1	690.3	159.76	5.321	
11,400.0	7,094.9	11,727.8	7,299.6	84.1	84.9	103.93	4,274.3	877.6	850.1	686.7	163.42	5.202	
11,500.0	7,094.5	11,827.8	7,299.2	85.9	86.8	103.94	4,374.3	878.0	850.2	683.1	167.08	5.088	
11,600.0	7,094.0	11,927.8	7,298.9	87.8	88.6	103.94	4,474.3	878.4	850.2	679.4	170.74	4.979	
11,700.0	7,093.5	12,027.8	7,298.5	89.7	90.5	103.95	4,574.3	878.9	850.2	675.8	174.41	4.875	
11,707.1	7,093.5	12,033.7	7,298.5	89.8	90.6	103.95	4,580.2	878.9	850.2	675.6	174.65	4.868 SF	

Company: Verdad Oil & Gas Corporation
Project: SEC.24-T1N-R65W
Reference Site: Meehl 01N-65W-24 Pad Sec.24-T01N-R65W
Site Error: 0.0ft
Reference Well: Meehl 01N-65W-24-4N
Well Error: 0.0ft
Reference Wellbore: Wellbore #1
Reference Design: Plan #1 (10-17-14)

Local Co-ordinate Reference: Well Meehl 01N-65W-24-4N
TVD Reference: WELL @ 5038.5ft (RKB - 16.5')
MD Reference: WELL @ 5038.5ft (RKB - 16.5')
North Reference: True
Survey Calculation Method: Minimum Curvature
Output errors are at 2.00 sigma
Database: landmark
Offset TVD Reference: Offset Datum

Reference Depths are relative to WELL @ 5038.5ft (RKB - 16.5')

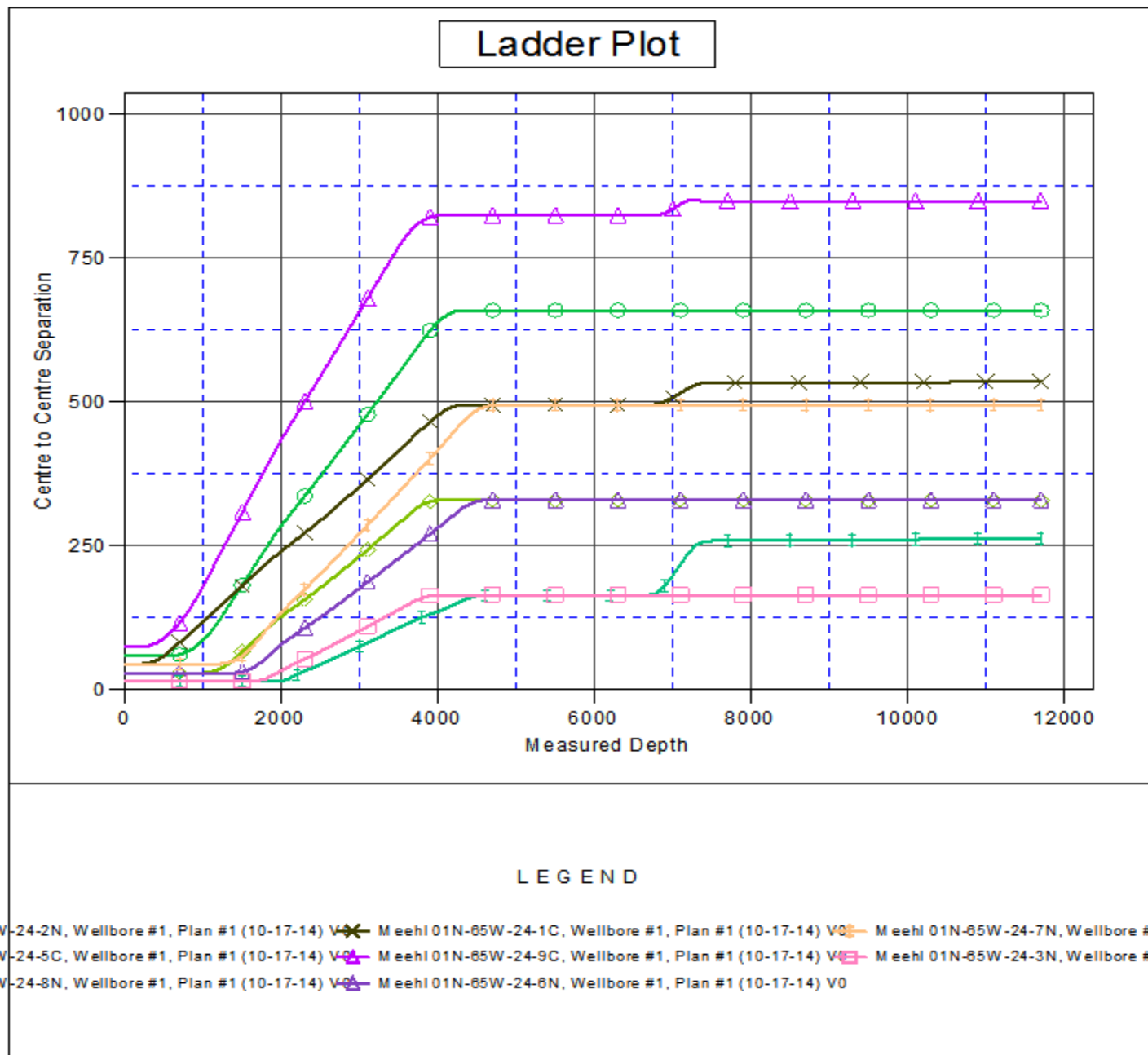
Offset Depths are relative to Offset Datum

Central Meridian is -105.500000 °

Coordinates are relative to: Meehl 01N-65W-24-4N

Coordinate System is US State Plane 1983, Colorado Northern Zone

Grid Convergence at Surface is: 0.58°



Company: Verdad Oil & Gas Corporation
Project: SEC.24-T1N-R65W
Reference Site: Meehl 01N-65W-24 Pad Sec.24-T01N-R65W
Site Error: 0.0ft
Reference Well: Meehl 01N-65W-24-4N
Well Error: 0.0ft
Reference Wellbore: Wellbore #1
Reference Design: Plan #1 (10-17-14)

Local Co-ordinate Reference: Well Meehl 01N-65W-24-4N
TVD Reference: WELL @ 5038.5ft (RKB - 16.5')
MD Reference: WELL @ 5038.5ft (RKB - 16.5')
North Reference: True
Survey Calculation Method: Minimum Curvature
Output errors are at 2.00 sigma
Database: landmark
Offset TVD Reference: Offset Datum

Reference Depths are relative to WELL @ 5038.5ft (RKB - 16.5')

Offset Depths are relative to Offset Datum

Central Meridian is -105.500000 °

Coordinates are relative to: Meehl 01N-65W-24-4N

Coordinate System is US State Plane 1983, Colorado Northern Zone

Grid Convergence at Surface is: 0.58°

