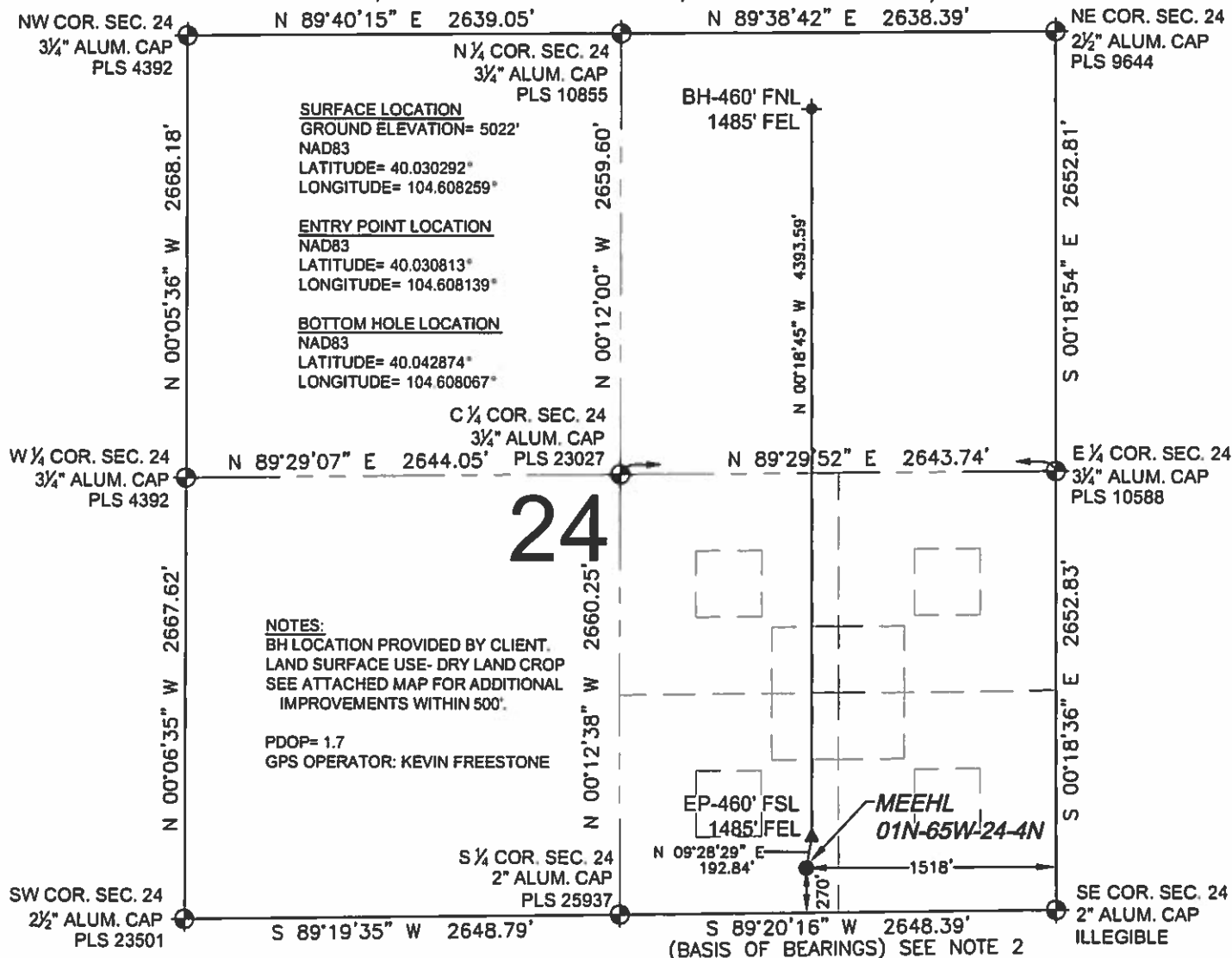


# WELL LOCATION CERTIFICATE: MEEHL 01N-65W-24-4N

SECTION 24, TOWNSHIP 1 NORTH, RANGE 65 WEST, 6TH P.M.



## LEGEND

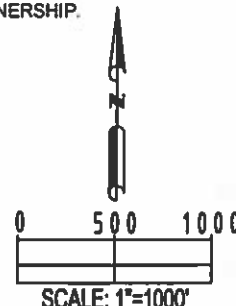
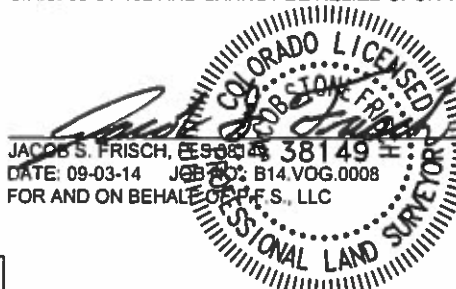
- ⊕ = EXISTING MONUMENT
- = PROPOSED WELL
- ◆ = BOTTOM HOLE
- ▲ = ENTRY POINT
- EP = ENTRY POINT
- BH = BOTTOM HOLE

WELL MEEHL 01N-65W-24-4N TO BE LOCATED 270' FSL AND 1518' FEL

## NOTES:

- THIS FIELD SURVEY CONFORMS TO THE MINIMUM STANDARDS SET BY THE C.O.G.C.C., RULE NO. 215
- BEARINGS ARE BASED UPON THE SOUTH LINE OF THE SOUTHEAST QUARTER OF SECTION 24, TOWNSHIP 1 NORTH, RANGE 65 WEST OF THE 6TH P.M., COUNTY OF WELD, STATE OF COLORADO AS BEARING S89°20'16"W BETWEEN THE MONUMENTS SHOWN HEREON.
- GRID DISTANCES ARE SHOWN, AS GPS MEASURED IN THE FIELD, WITH TIES TO WELLS MEASURED PERPENDICULAR TO SECTION LINES. TO GET GROUND DISTANCES MULTIPLY THE SHOWN DISTANCE BY 1.000270914.
- ELEVATIONS SHOWN ARE NAVD 88, AS DERIVED BY GPS OBSERVATIONS.

I, JACOB S. FRISCH, A LICENSED PROFESSIONAL LAND SURVEYOR IN THE STATE OF COLORADO DO HEREBY CERTIFY TO VERDAD OIL & GAS CORPORATION, THAT THE SURVEY AND WELL LOCATION CERTIFICATE SHOWN HEREON WERE DONE BY ME OR UNDER MY DIRECT SUPERVISION AND THAT THE DRAWING SHOWN HEREON ACCURATELY DEPICTS THE PROPOSED LOCATION OF THE WELL. THIS CERTIFICATE DOES NOT REPRESENT A LAND SURVEY PLAT OR IMPROVEMENT SURVEY PLAT AS DEFINED BY C.R.S. 38-51-102 AND CANNOT BE RELIED UPON TO DETERMINE OWNERSHIP.



<b>PREPARED BY:</b>  <b>PFS</b> Petroleum Field Services, LLC 7536 Hilltop Circle Denver, CO 80221	<b>FIELD DATE:</b> 08-26-14 <b>DRAWING DATE:</b> 09-02-14 <b>BY:</b> SMF <b>CHECKED:</b> TJN	<b>SURFACE LOCATION:</b> SW 1/4 SE 1/4, SEC. 24, T1N, R65W, 6TH P.M. WELD COUNTY, COLORADO
---	---	---

NOTICE: ACCORDING TO COLORADO LAW YOU MUST COMMENCE ANY LEGAL ACTION BASED UPON ANY DEFECT IN THIS SURVEY WITHIN THREE YEARS AFTER YOU FIRST DISCOVER SUCH DEFECT. IN NO EVENT MAY ANY ACTION BASED UPON ANY DEFECT IN THIS SURVEY BE COMMENCED MORE THAN TEN YEARS FROM THIS SAID DATE OF THIS CERTIFICATION SHOWN HEREON.