

Verdad Oil & Gas Corporation

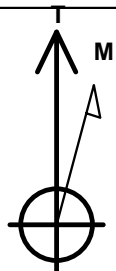
Well Name: **Meehl 01N-65W-24-3N**

Surface Location: Meehl 01N-65W-24 Pad Sec.24-T01N-R65W
North American Datum 1983 , US State Plane 1983 , Colorado Northern Zone
Ground Elevation: 5022.0

+N/-S	+E/-W	Northing	Easting	Latitude	Longitude	Slot
0.0	0.0	1255136.49	3249694.15	40.030291	-104.608313	
RKB - 16.5' WELL @ 5038.5ft (RKB - 16.5')						

WELLBORE TARGET DETAILS

Name	TVD	+N/-S	+E/-W	Shape
460' Setback BHL	1.0	4585.7	-730.0	Polygon
460' Setback SHL	1.0	190.0	-730.0	Polygon
Sectionline	1.0	-270.0	-730.0	Polygon
SHL 270'FSL & 1533'FEL	1.0	0.0	0.0	Point
BHL 460'FNL & 1650'FEL	7093.5	4584.6	-96.0	Point



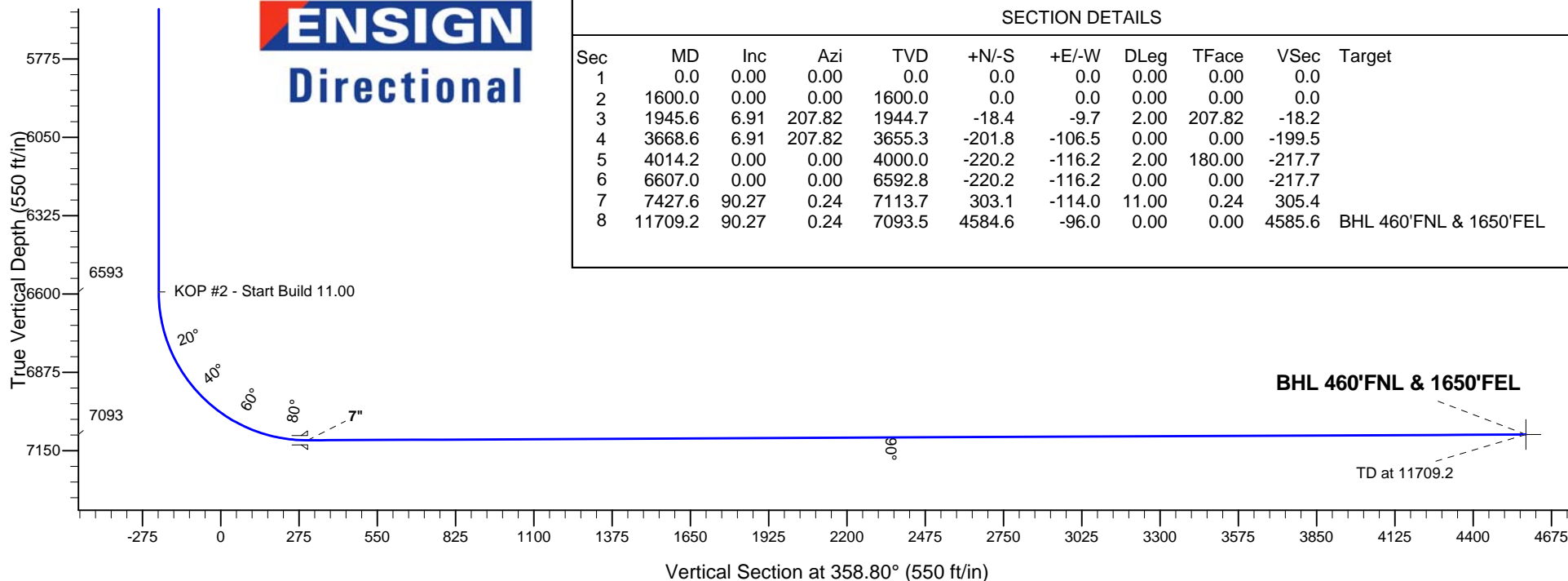
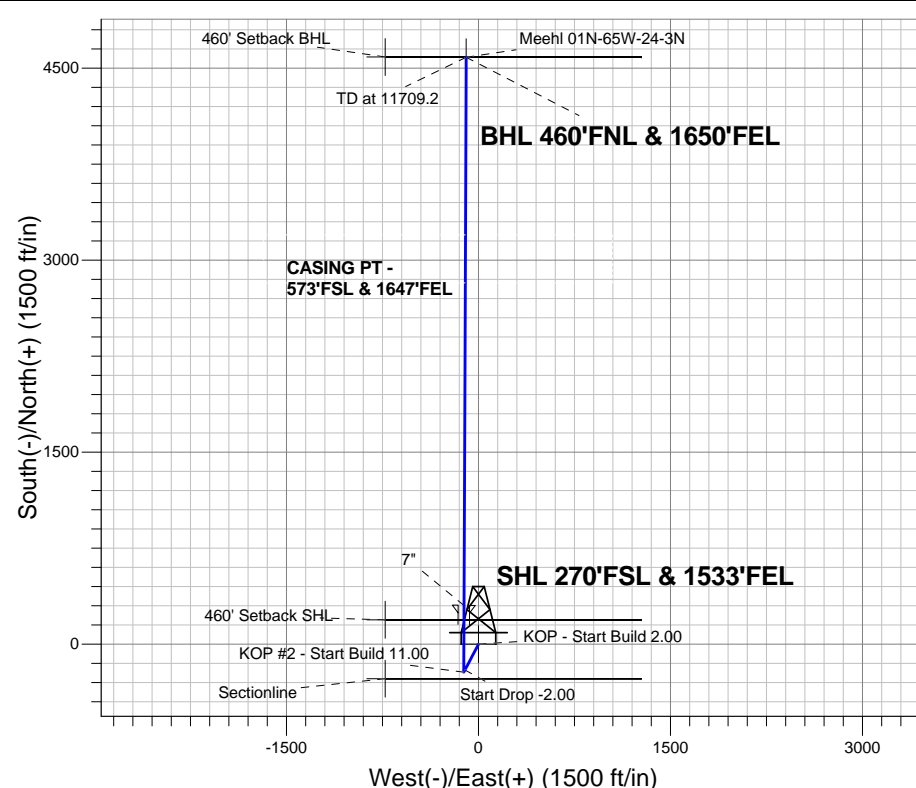
Azimuths to True North
Magnetic North: 8.30°

Magnetic Field
Strength: 52600.0nT
Dip Angle: 66.66°
Date: 10/17/2014
Model: IGRF2010

Meehl 01N-65W-24 Pad Sec.24-T01N-R65W
Meehl 01N-65W-24-3N
Plan #1 (10-17-14)

ANNOTATIONS

TVD	MD	Annotation
1600.0	1600.0	KOP - Start Build 2.00
3655.3	3668.6	Start Drop -2.00
6592.8	6607.0	KOP #2 - Start Build 11.00
7093.5	11709.2	TD at 11709.2





Verdad Oil & Gas Corporation

SEC.24-T1N-R65W

Meehl 01N-65W-24 Pad Sec.24-T01N-R65W

Meehl 01N-65W-24-3N

Wellbore #1

Plan: Plan #1 (10-17-14)

Standard Planning Report

20 October, 2014

Database:	landmark	Local Co-ordinate Reference:	Well Meehl 01N-65W-24-3N
Company:	Verdad Oil & Gas Corporation	TVD Reference:	WELL @ 5038.5ft (RKB - 16.5')
Project:	SEC.24-T1N-R65W	MD Reference:	WELL @ 5038.5ft (RKB - 16.5')
Site:	Meehl 01N-65W-24 Pad Sec.24-T01N-R65W	North Reference:	True
Well:	Meehl 01N-65W-24-3N	Survey Calculation Method:	Minimum Curvature
Wellbore:	Wellbore #1		
Design:	Plan #1 (10-17-14)		

Project	SEC.24-T1N-R65W		
Map System:	US State Plane 1983	System Datum:	Mean Sea Level
Geo Datum:	North American Datum 1983		Using Well Reference Point
Map Zone:	Colorado Northern Zone		Using geodetic scale factor

Site						Meehl 01N-65W-24 Pad Sec.24-T01N-R65W											
Site Position:						Northing:			1,255,136.20ft			Latitude:			40.030291		
From:			Lat/Long			Easting:			3,249,664.19ft			Longitude:			-104.608420		
Position Uncertainty:			0.0 ft			Slot Radius:			"			Grid Convergence:			0.58 °		

Well	Meehl 01N-65W-24-3N					
Well Position	+N-S	0.0 ft	Northing:	1,255,136.49 ft	Latitude:	40.030291
	+E-W	30.0 ft	Easting:	3,249,694.15 ft	Longitude:	-104.608313
Position Uncertainty		0.0 ft	Wellhead Elevation:	ft	Ground Level:	5,022.0 ft

Wellbore	Wellbore #1				
Magnetics	Model Name	Sample Date	Declination (°)	Dip Angle (°)	Field Strength (nT)
	IGRF2010	10/17/2014	8.30	66.66	52,600

Design	Plan #1 (10-17-14)			
Audit Notes:				
Version:	Phase:	PROTOTYPE	Tie On Depth:	0.0
Vertical Section:	Depth From (TVD) (ft)	+N/-S (ft)	+E/-W (ft)	Direction (°)
	0.0	0.0	0.0	358.80

Plan Sections										
Measured Depth (ft)	Inclination (°)	Azimuth (°)	Vertical Depth (ft)	+N/-S (ft)	+E/-W (ft)	Dogleg Rate (°/100ft)	Build Rate (°/100ft)	Turn Rate (°/100ft)	TFO (°)	Target
0.0	0.00	0.00	0.0	0.0	0.0	0.00	0.00	0.00	0.00	
1,600.0	0.00	0.00	1,600.0	0.0	0.0	0.00	0.00	0.00	0.00	
1,945.6	6.91	207.82	1,944.7	-18.4	-9.7	2.00	2.00	0.00	207.82	
3,668.6	6.91	207.82	3,655.3	-201.8	-106.5	0.00	0.00	0.00	0.00	
4,014.2	0.00	0.00	4,000.0	-220.2	-116.2	2.00	-2.00	0.00	180.00	
6,607.0	0.00	0.00	6,592.8	-220.2	-116.2	0.00	0.00	0.00	0.00	
7,427.6	90.27	0.24	7,113.7	303.1	-114.0	11.00	11.00	0.00	0.24	
11,709.2	90.27	0.24	7,093.5	4,584.6	-96.0	0.00	0.00	0.00	0.00	BHL 460'FNL & 165°

Database: landmark
Company: Verdad Oil & Gas Corporation
Project: SEC.24-T1N-R65W
Site: Meehl 01N-65W-24 Pad Sec.24-T01N-R65W
Well: Meehl 01N-65W-24-3N
Wellbore: Wellbore #1
Design: Plan #1 (10-17-14)

Local Co-ordinate Reference: Well Meehl 01N-65W-24-3N
TVD Reference: WELL @ 5038.5ft (RKB - 16.5')
MD Reference: WELL @ 5038.5ft (RKB - 16.5')
North Reference: True
Survey Calculation Method: Minimum Curvature

Planned Survey									
Measured Depth (ft)	Inclination (°)	Azimuth (°)	Vertical Depth (ft)	+N/-S (ft)	+E/-W (ft)	Vertical Section (ft)	Dogleg Rate (°/100ft)	Build Rate (°/100ft)	Turn Rate (°/100ft)
0.0	0.00	0.00	0.0	0.0	0.0	0.0	0.00	0.00	0.00
100.0	0.00	0.00	100.0	0.0	0.0	0.0	0.00	0.00	0.00
200.0	0.00	0.00	200.0	0.0	0.0	0.0	0.00	0.00	0.00
300.0	0.00	0.00	300.0	0.0	0.0	0.0	0.00	0.00	0.00
400.0	0.00	0.00	400.0	0.0	0.0	0.0	0.00	0.00	0.00
500.0	0.00	0.00	500.0	0.0	0.0	0.0	0.00	0.00	0.00
600.0	0.00	0.00	600.0	0.0	0.0	0.0	0.00	0.00	0.00
700.0	0.00	0.00	700.0	0.0	0.0	0.0	0.00	0.00	0.00
800.0	0.00	0.00	800.0	0.0	0.0	0.0	0.00	0.00	0.00
900.0	0.00	0.00	900.0	0.0	0.0	0.0	0.00	0.00	0.00
1,000.0	0.00	0.00	1,000.0	0.0	0.0	0.0	0.00	0.00	0.00
1,100.0	0.00	0.00	1,100.0	0.0	0.0	0.0	0.00	0.00	0.00
1,200.0	0.00	0.00	1,200.0	0.0	0.0	0.0	0.00	0.00	0.00
1,300.0	0.00	0.00	1,300.0	0.0	0.0	0.0	0.00	0.00	0.00
1,400.0	0.00	0.00	1,400.0	0.0	0.0	0.0	0.00	0.00	0.00
1,500.0	0.00	0.00	1,500.0	0.0	0.0	0.0	0.00	0.00	0.00
1,600.0	0.00	0.00	1,600.0	0.0	0.0	0.0	0.00	0.00	0.00
KOP - Start Build 2.00									
1,700.0	2.00	207.82	1,700.0	-1.5	-0.8	-1.5	2.00	2.00	0.00
1,800.0	4.00	207.82	1,799.8	-6.2	-3.3	-6.1	2.00	2.00	0.00
1,900.0	6.00	207.82	1,899.5	-13.9	-7.3	-13.7	2.00	2.00	0.00
1,945.6	6.91	207.82	1,944.7	-18.4	-9.7	-18.2	2.00	2.00	0.00
2,000.0	6.91	207.82	1,998.8	-24.2	-12.8	-23.9	0.00	0.00	0.00
2,100.0	6.91	207.82	2,098.0	-34.8	-18.4	-34.5	0.00	0.00	0.00
2,200.0	6.91	207.82	2,197.3	-45.5	-24.0	-45.0	0.00	0.00	0.00
2,300.0	6.91	207.82	2,296.6	-56.1	-29.6	-55.5	0.00	0.00	0.00
2,400.0	6.91	207.82	2,395.9	-66.8	-35.2	-66.0	0.00	0.00	0.00
2,500.0	6.91	207.82	2,495.1	-77.4	-40.9	-76.5	0.00	0.00	0.00
2,600.0	6.91	207.82	2,594.4	-88.1	-46.5	-87.1	0.00	0.00	0.00
2,700.0	6.91	207.82	2,693.7	-98.7	-52.1	-97.6	0.00	0.00	0.00
2,800.0	6.91	207.82	2,793.0	-109.3	-57.7	-108.1	0.00	0.00	0.00
2,900.0	6.91	207.82	2,892.2	-120.0	-63.3	-118.6	0.00	0.00	0.00
3,000.0	6.91	207.82	2,991.5	-130.6	-68.9	-129.2	0.00	0.00	0.00
3,100.0	6.91	207.82	3,090.8	-141.3	-74.5	-139.7	0.00	0.00	0.00
3,200.0	6.91	207.82	3,190.0	-151.9	-80.2	-150.2	0.00	0.00	0.00
3,300.0	6.91	207.82	3,289.3	-162.6	-85.8	-160.7	0.00	0.00	0.00
3,400.0	6.91	207.82	3,388.6	-173.2	-91.4	-171.2	0.00	0.00	0.00
3,500.0	6.91	207.82	3,487.9	-183.8	-97.0	-181.8	0.00	0.00	0.00
3,600.0	6.91	207.82	3,587.1	-194.5	-102.6	-192.3	0.00	0.00	0.00
3,668.6	6.91	207.82	3,655.2	-201.8	-106.5	-199.5	0.00	0.00	0.00
Start Drop -2.00									
3,700.0	6.28	207.82	3,686.4	-205.0	-108.2	-202.7	2.00	-2.00	0.00
3,800.0	4.28	207.82	3,786.0	-213.1	-112.5	-210.7	2.00	-2.00	0.00
3,900.0	2.28	207.82	3,885.8	-218.2	-115.1	-215.7	2.00	-2.00	0.00
4,000.0	0.28	207.82	3,985.8	-220.2	-116.2	-217.7	2.00	-2.00	0.00
4,014.2	0.00	0.00	4,000.0	-220.2	-116.2	-217.7	2.00	-2.00	0.00
4,100.0	0.00	0.00	4,085.8	-220.2	-116.2	-217.7	0.00	0.00	0.00
4,200.0	0.00	0.00	4,185.8	-220.2	-116.2	-217.7	0.00	0.00	0.00
4,300.0	0.00	0.00	4,285.8	-220.2	-116.2	-217.7	0.00	0.00	0.00
4,400.0	0.00	0.00	4,385.8	-220.2	-116.2	-217.7	0.00	0.00	0.00
4,500.0	0.00	0.00	4,485.8	-220.2	-116.2	-217.7	0.00	0.00	0.00
4,600.0	0.00	0.00	4,585.8	-220.2	-116.2	-217.7	0.00	0.00	0.00
4,700.0	0.00	0.00	4,685.8	-220.2	-116.2	-217.7	0.00	0.00	0.00
4,800.0	0.00	0.00	4,785.8	-220.2	-116.2	-217.7	0.00	0.00	0.00

Database:	landmark	Local Co-ordinate Reference:	Well Meehl 01N-65W-24-3N
Company:	Verdad Oil & Gas Corporation	TVD Reference:	WELL @ 5038.5ft (RKB - 16.5')
Project:	SEC.24-T1N-R65W	MD Reference:	WELL @ 5038.5ft (RKB - 16.5')
Site:	Meehl 01N-65W-24 Pad Sec.24-T01N-R65W	North Reference:	True
Well:	Meehl 01N-65W-24-3N	Survey Calculation Method:	Minimum Curvature
Wellbore:	Wellbore #1		
Design:	Plan #1 (10-17-14)		

Planned Survey									
Measured Depth (ft)	Inclination (°)	Azimuth (°)	Vertical Depth (ft)	+N/-S (ft)	+E/-W (ft)	Vertical Section (ft)	Dogleg Rate (°/100ft)	Build Rate (°/100ft)	Turn Rate (°/100ft)
4,900.0	0.00	0.00	4,885.8	-220.2	-116.2	-217.7	0.00	0.00	0.00
5,000.0	0.00	0.00	4,985.8	-220.2	-116.2	-217.7	0.00	0.00	0.00
5,100.0	0.00	0.00	5,085.8	-220.2	-116.2	-217.7	0.00	0.00	0.00
5,200.0	0.00	0.00	5,185.8	-220.2	-116.2	-217.7	0.00	0.00	0.00
5,300.0	0.00	0.00	5,285.8	-220.2	-116.2	-217.7	0.00	0.00	0.00
5,400.0	0.00	0.00	5,385.8	-220.2	-116.2	-217.7	0.00	0.00	0.00
5,500.0	0.00	0.00	5,485.8	-220.2	-116.2	-217.7	0.00	0.00	0.00
5,600.0	0.00	0.00	5,585.8	-220.2	-116.2	-217.7	0.00	0.00	0.00
5,700.0	0.00	0.00	5,685.8	-220.2	-116.2	-217.7	0.00	0.00	0.00
5,800.0	0.00	0.00	5,785.8	-220.2	-116.2	-217.7	0.00	0.00	0.00
5,900.0	0.00	0.00	5,885.8	-220.2	-116.2	-217.7	0.00	0.00	0.00
6,000.0	0.00	0.00	5,985.8	-220.2	-116.2	-217.7	0.00	0.00	0.00
6,100.0	0.00	0.00	6,085.8	-220.2	-116.2	-217.7	0.00	0.00	0.00
6,200.0	0.00	0.00	6,185.8	-220.2	-116.2	-217.7	0.00	0.00	0.00
6,300.0	0.00	0.00	6,285.8	-220.2	-116.2	-217.7	0.00	0.00	0.00
6,400.0	0.00	0.00	6,385.8	-220.2	-116.2	-217.7	0.00	0.00	0.00
6,500.0	0.00	0.00	6,485.8	-220.2	-116.2	-217.7	0.00	0.00	0.00
6,600.0	0.00	0.00	6,585.8	-220.2	-116.2	-217.7	0.00	0.00	0.00
6,607.0	0.00	0.00	6,592.8	-220.2	-116.2	-217.7	0.00	0.00	0.00
KOP #2 - Start Build 11.00									
6,700.0	10.23	0.24	6,685.3	-211.9	-116.2	-209.4	11.00	11.00	0.00
6,800.0	21.23	0.24	6,781.4	-184.9	-116.1	-182.4	11.00	11.00	0.00
6,900.0	32.23	0.24	6,870.6	-139.9	-115.9	-137.5	11.00	11.00	0.00
7,000.0	43.23	0.24	6,949.6	-78.8	-115.6	-76.4	11.00	11.00	0.00
7,100.0	54.23	0.24	7,015.4	-3.8	-115.3	-1.4	11.00	11.00	0.00
7,200.0	65.23	0.24	7,065.8	82.4	-114.9	84.8	11.00	11.00	0.00
7,300.0	76.23	0.24	7,098.7	176.7	-114.5	179.0	11.00	11.00	0.00
7,400.0	87.23	0.24	7,113.1	275.5	-114.1	277.8	11.00	11.00	0.00
7,427.6	90.27	0.24	7,113.7	303.1	-114.0	305.4	11.00	11.00	0.00
7"									
7,500.0	90.27	0.24	7,113.3	375.5	-113.7	377.8	0.01	0.01	0.00
7,600.0	90.27	0.24	7,112.9	475.5	-113.3	477.7	0.00	0.00	0.00
7,700.0	90.27	0.24	7,112.4	575.5	-112.9	577.7	0.00	0.00	0.00
7,800.0	90.27	0.24	7,111.9	675.5	-112.4	677.7	0.00	0.00	0.00
7,900.0	90.27	0.24	7,111.5	775.5	-112.0	777.6	0.00	0.00	0.00
8,000.0	90.27	0.24	7,111.0	875.5	-111.6	877.6	0.00	0.00	0.00
8,100.0	90.27	0.24	7,110.5	975.5	-111.2	977.6	0.00	0.00	0.00
8,200.0	90.27	0.24	7,110.0	1,075.5	-110.8	1,077.5	0.00	0.00	0.00
8,300.0	90.27	0.24	7,109.6	1,175.5	-110.3	1,177.5	0.00	0.00	0.00
8,400.0	90.27	0.24	7,109.1	1,275.5	-109.9	1,277.5	0.00	0.00	0.00
8,500.0	90.27	0.24	7,108.6	1,375.5	-109.5	1,377.4	0.00	0.00	0.00
8,600.0	90.27	0.24	7,108.2	1,475.5	-109.1	1,477.4	0.00	0.00	0.00
8,700.0	90.27	0.24	7,107.7	1,575.5	-108.7	1,577.4	0.00	0.00	0.00
8,800.0	90.27	0.24	7,107.2	1,675.5	-108.2	1,677.3	0.00	0.00	0.00
8,900.0	90.27	0.24	7,106.7	1,775.4	-107.8	1,777.3	0.00	0.00	0.00
9,000.0	90.27	0.24	7,106.3	1,875.4	-107.4	1,877.3	0.00	0.00	0.00
9,100.0	90.27	0.24	7,105.8	1,975.4	-107.0	1,977.3	0.00	0.00	0.00
9,200.0	90.27	0.24	7,105.3	2,075.4	-106.6	2,077.2	0.00	0.00	0.00
9,300.0	90.27	0.24	7,104.9	2,175.4	-106.1	2,177.2	0.00	0.00	0.00
9,400.0	90.27	0.24	7,104.4	2,275.4	-105.7	2,277.2	0.00	0.00	0.00
9,500.0	90.27	0.24	7,103.9	2,375.4	-105.3	2,377.1	0.00	0.00	0.00
9,600.0	90.27	0.24	7,103.4	2,475.4	-104.9	2,477.1	0.00	0.00	0.00
9,700.0	90.27	0.24	7,103.0	2,575.4	-104.5	2,577.1	0.00	0.00	0.00
9,800.0	90.27	0.24	7,102.5	2,675.4	-104.0	2,677.0	0.00	0.00	0.00

Database:	landmark	Local Co-ordinate Reference:	Well Meehl 01N-65W-24-3N
Company:	Verdad Oil & Gas Corporation	TVD Reference:	WELL @ 5038.5ft (RKB - 16.5')
Project:	SEC.24-T1N-R65W	MD Reference:	WELL @ 5038.5ft (RKB - 16.5')
Site:	Meehl 01N-65W-24 Pad Sec.24-T01N-R65W	North Reference:	True
Well:	Meehl 01N-65W-24-3N	Survey Calculation Method:	Minimum Curvature
Wellbore:	Wellbore #1		
Design:	Plan #1 (10-17-14)		

Planned Survey										
Measured Depth (ft)	Inclination (°)	Azimuth (°)	Vertical Depth (ft)	+N/-S (ft)	+E/-W (ft)	Vertical Section (ft)	Dogleg Rate (°/100ft)	Build Rate (°/100ft)	Turn Rate (°/100ft)	
9,900.0	90.27	0.24	7,102.0	2,775.4	-103.6	2,777.0	0.00	0.00	0.00	
10,000.0	90.27	0.24	7,101.6	2,875.4	-103.2	2,877.0	0.00	0.00	0.00	
10,100.0	90.27	0.24	7,101.1	2,975.4	-102.8	2,976.9	0.00	0.00	0.00	
10,200.0	90.27	0.24	7,100.6	3,075.4	-102.4	3,076.9	0.00	0.00	0.00	
10,300.0	90.27	0.24	7,100.1	3,175.4	-101.9	3,176.9	0.00	0.00	0.00	
10,400.0	90.27	0.24	7,099.7	3,275.4	-101.5	3,276.8	0.00	0.00	0.00	
10,500.0	90.27	0.24	7,099.2	3,375.4	-101.1	3,376.8	0.00	0.00	0.00	
10,600.0	90.27	0.24	7,098.7	3,475.4	-100.7	3,476.8	0.00	0.00	0.00	
10,700.0	90.27	0.24	7,098.3	3,575.4	-100.3	3,576.7	0.00	0.00	0.00	
10,800.0	90.27	0.24	7,097.8	3,675.4	-99.9	3,676.7	0.00	0.00	0.00	
10,900.0	90.27	0.24	7,097.3	3,775.4	-99.4	3,776.7	0.00	0.00	0.00	
11,000.0	90.27	0.24	7,096.8	3,875.4	-99.0	3,876.6	0.00	0.00	0.00	
11,100.0	90.27	0.24	7,096.4	3,975.4	-98.6	3,976.6	0.00	0.00	0.00	
11,200.0	90.27	0.24	7,095.9	4,075.4	-98.2	4,076.6	0.00	0.00	0.00	
11,300.0	90.27	0.24	7,095.4	4,175.4	-97.8	4,176.5	0.00	0.00	0.00	
11,400.0	90.27	0.24	7,095.0	4,275.4	-97.3	4,276.5	0.00	0.00	0.00	
11,500.0	90.27	0.24	7,094.5	4,375.4	-96.9	4,376.5	0.00	0.00	0.00	
11,600.0	90.27	0.24	7,094.0	4,475.4	-96.5	4,476.4	0.00	0.00	0.00	
11,700.0	90.27	0.24	7,093.5	4,575.4	-96.1	4,576.4	0.00	0.00	0.00	
11,709.2	90.27	0.24	7,093.5	4,584.6	-96.0	4,585.6	0.00	0.00	0.00	

Targets										
Target Name	Dip Angle (°)	Dip Dir. (°)	TVD (ft)	+N/-S (ft)	+E/-W (ft)	Northing (ft)	Easting (ft)	Latitude	Longitude	
- hit/miss target										
- Shape										
BHL 460'FNL & 1650'	0.00	0.00	7,093.5	4,584.6	-96.0	1,259,719.71	3,249,552.02	40.042876	-104.608656	
- plan hits target										
- Point										
Sectionline	0.00	0.00	1.0	-270.0	-730.0	1,254,859.18	3,248,966.97	40.029550	-104.610920	
- plan misses by 778.3ft at 1.0ft MD (1.0 TVD, 0.0 N, 0.0 E)										
- Polygon										
Point 1			1.0	0.0	0.0	1,254,859.18	3,248,966.97			
Point 2			1.0	0.0	2,000.0	1,254,879.29	3,250,966.79			
460' Setback BHL	0.00	0.00	1.0	4,585.7	-730.0	1,259,714.45	3,248,918.15	40.042879	-104.610920	
- plan misses by 4643.4ft at 1.0ft MD (1.0 TVD, 0.0 N, 0.0 E)										
- Polygon										
Point 1			1.0	0.0	0.0	1,259,714.45	3,248,918.15			
Point 2			1.0	0.0	2,000.0	1,259,734.56	3,250,917.97			
460' Setback SHL	0.00	0.00	1.0	190.0	-730.0	1,255,319.14	3,248,962.34	40.030813	-104.610920	
- plan misses by 754.3ft at 1.0ft MD (1.0 TVD, 0.0 N, 0.0 E)										
- Polygon										
Point 1			1.0	0.0	0.0	1,255,319.14	3,248,962.34			
Point 2			1.0	0.0	2,000.0	1,255,339.25	3,250,962.16			
SHL 270'FSL & 1533'	0.00	0.00	1.0	0.0	0.0	1,255,136.50	3,249,694.15	40.030291	-104.608313	
- plan hits target										
- Point										

Database:	landmark	Local Co-ordinate Reference:	Well Meehl 01N-65W-24-3N
Company:	Verdad Oil & Gas Corporation	TVD Reference:	WELL @ 5038.5ft (RKB - 16.5')
Project:	SEC.24-T1N-R65W	MD Reference:	WELL @ 5038.5ft (RKB - 16.5')
Site:	Meehl 01N-65W-24 Pad Sec.24-T01N-R65W	North Reference:	True
Well:	Meehl 01N-65W-24-3N	Survey Calculation Method:	Minimum Curvature
Wellbore:	Wellbore #1		
Design:	Plan #1 (10-17-14)		

Casing Points					
Measured Depth (ft)	Vertical Depth (ft)	Name	Casing Diameter (")	Hole Diameter (")	
7,427.6	7,113.7	7"	7	7-1/2	

Plan Annotations					
Measured Depth (ft)	Vertical Depth (ft)	Local Coordinates			
		+N/-S (ft)	+E/-W (ft)	Comment	
1,600.0	1,600.0	0.0	0.0	KOP - Start Build 2.00	
3,668.6	3,655.2	-201.8	-106.5	Start Drop -2.00	
6,607.0	6,592.8	-220.2	-116.2	KOP #2 - Start Build 11.00	
11,709.2	7,093.5	4,584.6	-96.0	TD at 11709.2	



Verdad Oil & Gas Corporation

SEC.24-T1N-R65W

Meehl 01N-65W-24 Pad Sec.24-T01N-R65W

Meehl 01N-65W-24-3N

Wellbore #1

Plan #1 (10-17-14)

Anticollision Report

20 October, 2014

Company:	Verdad Oil & Gas Corporation	Local Co-ordinate Reference:	Well Meehl 01N-65W-24-3N
Project:	SEC.24-T1N-R65W	TVD Reference:	WELL @ 5038.5ft (RKB - 16.5')
Reference Site:	Meehl 01N-65W-24 Pad Sec.24-T01N-R65W	MD Reference:	WELL @ 5038.5ft (RKB - 16.5')
Site Error:	0.0ft	North Reference:	True
Reference Well:	Meehl 01N-65W-24-3N	Survey Calculation Method:	Minimum Curvature
Well Error:	0.0ft	Output errors are at	2.00 sigma
Reference Wellbore	Wellbore #1	Database:	landmark
Reference Design:	Plan #1 (10-17-14)	Offset TVD Reference:	Offset Datum

Reference	Plan #1 (10-17-14)		
Filter type:	NO GLOBAL FILTER: Using user defined selection & filtering criteria		
Interpolation Method:	MD Interval 100.0ft	Error Model:	ISCSWA
Depth Range:	Unlimited	Scan Method:	Closest Approach 3D
Results Limited by:	Maximum center-center distance of 1,000.0ft	Error Surface:	Elliptical Conic
Warning Levels Evaluated at:	2.00 Sigma		

Survey Tool Program		Date	10/20/2014		
From (ft)	To (ft)	Survey (Wellbore)	Tool Name	Description	
0.0	11,709.2	Plan #1 (10-17-14) (Wellbore #1)	MWD	MWD - Standard	

Summary							
Site Name	Reference Measured Depth (ft)	Offset Measured Depth (ft)	Distance Between Centres (ft)	Distance Between Ellipses (ft)	Separation Factor	Warning	
Offset Well - Wellbore - Design							
Meehl 01N-65W-24 Pad Sec.24-T01N-R65W							
Meehl 01N-65W-24-1C - Wellbore #1 - Plan #1 (10-17-14	200.0	200.0	30.0	29.3	44.438	CC, ES	
Meehl 01N-65W-24-1C - Wellbore #1 - Plan #1 (10-17-14	11,709.2	11,924.9	388.6	232.2	2.485	SF	
Meehl 01N-65W-24-2N - Wellbore #1 - Plan #1 (10-17-14	1,000.0	1,000.0	14.8	10.6	3.476	CC	
Meehl 01N-65W-24-2N - Wellbore #1 - Plan #1 (10-17-14	11,709.2	11,717.3	164.9	-14.6	0.919	Level 1, ES, SF	
Meehl 01N-65W-24-4N - Wellbore #1 - Plan #1 (10-17-14	1,600.0	1,600.0	15.1	8.2	2.171	CC	
Meehl 01N-65W-24-4N - Wellbore #1 - Plan #1 (10-17-14	11,709.2	11,706.4	164.9	-14.7	0.918	Level 1, ES, SF	
Meehl 01N-65W-24-5C - Wellbore #1 - Plan #1 (10-17-14	1,600.0	1,600.0	30.2	23.3	4.341	CC, ES	
Meehl 01N-65W-24-5C - Wellbore #1 - Plan #1 (10-17-14	11,709.2	11,910.2	388.6	231.6	2.476	SF	
Meehl 01N-65W-24-6N - Wellbore #1 - Plan #1 (10-17-14	1,400.0	1,400.0	45.1	39.0	7.430	CC, ES	
Meehl 01N-65W-24-6N - Wellbore #1 - Plan #1 (10-17-14	11,709.2	11,719.2	495.0	315.5	2.758	SF	
Meehl 01N-65W-24-7N - Wellbore #1 - Plan #1 (10-17-14	1,200.0	1,200.0	60.2	55.0	11.647	CC, ES	
Meehl 01N-65W-24-7N - Wellbore #1 - Plan #1 (10-17-14	11,709.2	11,735.2	659.9	480.4	3.675	SF	
Meehl 01N-65W-24-8N - Wellbore #1 - Plan #1 (10-17-14	600.0	600.0	75.1	72.6	30.355	CC, ES	
Meehl 01N-65W-24-8N - Wellbore #1 - Plan #1 (10-17-14	11,709.2	11,757.4	825.1	645.6	4.595	SF	
Meehl 01N-65W-24-9C - Wellbore #1 - Plan #1 (10-17-14	200.0	200.0	90.2	89.5	133.729	CC, ES	
Meehl 01N-65W-24-9C - Wellbore #1 - Plan #1 (10-17-14	6,900.0	6,968.7	992.7	962.1	32.468	SF	

Offset Design		Meehl 01N-65W-24 Pad Sec.24-T01N-R65W - Meehl 01N-65W-24-1C - Wellbore #1 - Plan #1 (10-17-1										Offset Site Error:		0.0 ft
Survey Program: 0-MWD												Offset Well Error:		0.0 ft
Reference		Offset		Semi Major Axis			Distance							
Measured Depth	Vertical Depth	Measured Depth	Vertical Depth	Reference	Offset	Highside Toolface	Offset Wellbore Centre		Between Centres	Between Ellipses	Minimum Separation	Separation Factor	Warning	
(ft)	(ft)	(ft)	(ft)	(ft)	(ft)	(°)	+N/-S (ft)	+E/-W (ft)	(ft)	(ft)	(ft)			
0.0	0.0	0.0	0.0	0.0	0.0	-89.99	0.0	-30.0	30.0					
100.0	100.0	100.0	100.0	0.1	0.1	-89.99	0.0	-30.0	30.0	29.7	0.22	133.313		
200.0	200.0	200.0	200.0	0.3	0.3	-89.99	0.0	-30.0	30.0	29.3	0.67	44.438 CC, ES		
300.0	300.0	299.0	299.0	0.6	0.5	-91.45	-0.8	-31.5	31.5	30.4	1.11	28.453		
400.0	400.0	397.9	397.7	0.8	0.8	-95.07	-3.2	-36.0	36.2	34.7	1.55	23.417		
500.0	500.0	496.2	495.7	1.0	1.0	-99.35	-7.2	-43.5	44.3	42.3	2.00	22.165		
600.0	600.0	594.5	593.3	1.2	1.3	-103.19	-12.6	-53.7	55.6	53.1	2.46	22.605		
700.0	700.0	693.7	691.7	1.5	1.6	-105.87	-18.4	-64.7	67.8	64.9	2.91	23.259		
800.0	800.0	792.9	790.2	1.7	1.9	-107.74	-24.2	-75.7	80.0	76.7	3.37	23.723		
900.0	900.0	892.1	888.6	1.9	2.2	-109.11	-30.0	-86.6	92.4	88.5	3.84	24.058		
1,000.0	1,000.0	991.4	987.0	2.1	2.5	-110.15	-35.8	-97.6	104.7	100.4	4.31	24.309		
1,100.0	1,100.0	1,090.6	1,085.5	2.4	2.9	-110.98	-41.6	-108.5	117.1	112.4	4.78	24.503		

CC - Min centre to center distance or convergent point, SF - min separation factor, ES - min ellipse separation

Company:	Verdad Oil & Gas Corporation	Local Co-ordinate Reference:	Well Meehl 01N-65W-24-3N
Project:	SEC.24-T1N-R65W	TVD Reference:	WELL @ 5038.5ft (RKB - 16.5')
Reference Site:	Meehl 01N-65W-24 Pad Sec.24-T01N-R65W	MD Reference:	WELL @ 5038.5ft (RKB - 16.5')
Site Error:	0.0ft	North Reference:	True
Reference Well:	Meehl 01N-65W-24-3N	Survey Calculation Method:	Minimum Curvature
Well Error:	0.0ft	Output errors are at	2.00 sigma
Reference Wellbore	Wellbore #1	Database:	landmark
Reference Design:	Plan #1 (10-17-14)	Offset TVD Reference:	Offset Datum

Offset Design												Offset Site Error:	0.0 ft
Survey Program: 0-MWD												Offset Well Error:	0.0 ft
Reference		Offset		Semi Major Axis			Distance						
Measured Depth (ft)	Vertical Depth (ft)	Measured Depth (ft)	Vertical Depth (ft)	Reference (ft)	Offset (ft)	Highside Toolface (°)	Offset Wellbore Centre +N/-S (ft)	+E/-W (ft)	Between Centres (ft)	Between Ellipses (ft)	Minimum Separation (ft)	Separation Factor	Warning
1,200.0	1,200.0	1,189.8	1,183.9	2.6	3.2	-111.65	-47.4	-119.5	129.6	124.3	5.25	24.656	
1,300.0	1,300.0	1,289.0	1,282.3	2.8	3.5	-112.20	-53.2	-130.4	142.0	136.3	5.73	24.781	
1,400.0	1,400.0	1,388.2	1,380.8	3.0	3.8	-112.66	-59.0	-141.4	154.4	148.2	6.21	24.883	
1,500.0	1,500.0	1,487.4	1,479.2	3.3	4.2	-113.05	-64.8	-152.4	166.9	160.2	6.68	24.969	
1,600.0	1,600.0	1,586.7	1,577.7	3.5	4.5	-113.39	-70.6	-163.3	179.3	172.2	7.16	25.042	
1,700.0	1,700.0	1,686.0	1,676.2	3.7	4.8	38.68	-76.5	-174.3	190.4	183.0	7.47	25.502	
1,800.0	1,799.8	1,785.6	1,775.1	3.9	5.1	39.24	-82.3	-185.3	198.9	191.0	7.88	25.223	
1,900.0	1,899.5	1,885.4	1,874.0	4.0	5.5	40.40	-88.1	-196.3	204.6	196.3	8.31	24.627	
2,000.0	1,998.8	1,985.1	1,973.0	4.2	5.8	42.08	-94.0	-207.3	208.3	199.5	8.75	23.795	
2,100.0	2,098.0	2,084.9	2,072.0	4.5	6.1	43.80	-99.8	-218.3	211.9	202.6	9.22	22.988	
2,200.0	2,197.3	2,184.6	2,170.9	4.7	6.5	45.46	-105.6	-229.4	215.6	205.9	9.69	22.244	
2,300.0	2,296.6	2,284.3	2,269.9	4.9	6.8	47.05	-111.5	-240.4	219.5	209.3	10.18	21.557	
2,400.0	2,395.9	2,384.1	2,368.8	5.2	7.1	48.60	-117.3	-251.4	223.6	212.9	10.69	20.922	
2,500.0	2,495.1	2,483.8	2,467.8	5.4	7.4	50.08	-123.1	-262.4	227.9	216.7	11.21	20.336	
2,600.0	2,594.4	2,583.5	2,566.7	5.7	7.8	51.51	-129.0	-273.4	232.3	220.5	11.73	19.794	
2,700.0	2,693.7	2,683.3	2,665.7	6.0	8.1	52.89	-134.8	-284.4	236.8	224.5	12.27	19.293	
2,800.0	2,793.0	2,783.0	2,764.6	6.2	8.4	54.21	-140.6	-295.5	241.5	228.6	12.82	18.830	
2,900.0	2,892.2	2,882.8	2,863.6	6.5	8.8	55.49	-146.5	-306.5	246.3	232.9	13.38	18.401	
3,000.0	2,991.5	2,982.5	2,962.6	6.8	9.1	56.71	-152.3	-317.5	251.2	237.2	13.95	18.004	
3,100.0	3,090.8	3,082.2	3,061.5	7.1	9.4	57.89	-158.2	-328.5	256.2	241.7	14.53	17.636	
3,200.0	3,190.0	3,182.0	3,160.5	7.4	9.8	59.02	-164.0	-339.5	261.3	246.2	15.11	17.295	
3,300.0	3,289.3	3,281.7	3,259.4	7.7	10.1	60.11	-169.8	-350.5	266.5	250.8	15.70	16.978	
3,400.0	3,388.6	3,381.4	3,358.4	8.0	10.4	61.15	-175.7	-361.6	271.8	255.6	16.29	16.684	
3,500.0	3,487.9	3,481.2	3,457.3	8.3	10.7	62.16	-181.5	-372.6	277.2	260.4	16.89	16.411	
3,600.0	3,587.1	3,580.9	3,556.3	8.6	11.1	63.13	-187.3	-383.6	282.7	265.2	17.50	16.156	
3,700.0	3,686.4	3,680.7	3,655.2	8.9	11.4	64.06	-193.2	-394.6	288.4	270.3	18.10	15.931	
3,800.0	3,786.0	3,780.4	3,754.2	9.1	11.7	64.58	-199.0	-405.6	295.2	276.6	18.62	15.851	
3,900.0	3,885.8	3,880.0	3,853.1	9.3	12.1	64.51	-204.8	-416.6	303.6	284.5	19.09	15.901	
4,000.0	3,985.8	3,980.5	3,952.7	9.5	12.4	63.89	-210.7	-427.7	313.4	293.9	19.50	16.075	
4,100.0	4,085.8	4,090.7	4,062.3	9.7	12.6	-89.25	-216.0	-437.6	322.3	302.5	19.81	16.268	
4,200.0	4,185.8	4,201.6	4,173.0	9.9	12.8	-89.84	-219.3	-443.9	327.9	307.8	20.15	16.274	
4,300.0	4,285.8	4,312.8	4,284.2	10.0	13.0	-90.07	-220.6	-446.3	330.1	309.6	20.50	16.102	
4,400.0	4,385.8	4,414.4	4,385.8	10.2	13.1	-90.07	-220.6	-446.4	330.2	309.3	20.87	15.824	
4,500.0	4,485.8	4,514.4	4,485.8	10.4	13.3	-90.07	-220.6	-446.4	330.2	308.9	21.22	15.558	
4,600.0	4,585.8	4,614.4	4,585.8	10.6	13.4	-90.07	-220.6	-446.4	330.2	308.6	21.58	15.299	
4,700.0	4,685.8	4,714.4	4,685.8	10.8	13.6	-90.07	-220.6	-446.4	330.2	308.2	21.94	15.047	
4,800.0	4,785.8	4,814.4	4,785.8	11.0	13.7	-90.07	-220.6	-446.4	330.2	307.9	22.31	14.800	
4,900.0	4,885.8	4,914.4	4,885.8	11.2	13.9	-90.07	-220.6	-446.4	330.2	307.5	22.68	14.560	
5,000.0	4,985.8	5,014.4	4,985.8	11.4	14.0	-90.07	-220.6	-446.4	330.2	307.1	23.05	14.325	
5,100.0	5,085.8	5,114.4	5,085.8	11.6	14.2	-90.07	-220.6	-446.4	330.2	306.7	23.42	14.096	
5,200.0	5,185.8	5,214.4	5,185.8	11.8	14.3	-90.07	-220.6	-446.4	330.2	306.4	23.80	13.873	
5,300.0	5,285.8	5,314.4	5,285.8	12.0	14.5	-90.07	-220.6	-446.4	330.2	306.0	24.18	13.656	
5,400.0	5,385.8	5,414.4	5,385.8	12.2	14.6	-90.07	-220.6	-446.4	330.2	305.6	24.56	13.444	
5,500.0	5,485.8	5,514.4	5,485.8	12.4	14.8	-90.07	-220.6	-446.4	330.2	305.2	24.94	13.237	
5,600.0	5,585.8	5,614.4	5,585.8	12.6	15.0	-90.07	-220.6	-446.4	330.2	304.8	25.33	13.035	
5,700.0	5,685.8	5,714.4	5,685.8	12.8	15.1	-90.07	-220.6	-446.4	330.2	304.4	25.72	12.839	
5,800.0	5,785.8	5,814.4	5,785.8	13.0	15.3	-90.07	-220.6	-446.4	330.2	304.1	26.11	12.647	
5,900.0	5,885.8	5,914.4	5,885.8	13.2	15.5	-90.07	-220.6	-446.4	330.2	303.7	26.50	12.460	
6,000.0	5,985.8	6,014.4	5,985.8	13.4	15.6	-90.07	-220.6	-446.4	330.2	303.3	26.89	12.278	
6,100.0	6,085.8	6,114.4	6,085.8	13.6	15.8	-90.07	-220.6	-446.4	330.2	302.9	27.29	12.100	
6,200.0	6,185.8	6,214.4	6,185.8	13.8	16.0	-90.07	-220.6	-446.4	330.2	302.5	27.68	11.927	
6,300.0	6,285.8	6,314.4	6,285.8	14.0	16.1	-90.07	-220.6	-446.4	330.2	302.1	28.08	11.757	

CC - Min centre to center distance or convergent point, SF - min separation factor, ES - min ellipse separation

Company:	Verdad Oil & Gas Corporation	Local Co-ordinate Reference:	Well Meehl 01N-65W-24-3N
Project:	SEC.24-T1N-R65W	TVD Reference:	WELL @ 5038.5ft (RKB - 16.5')
Reference Site:	Meehl 01N-65W-24 Pad Sec.24-T01N-R65W	MD Reference:	WELL @ 5038.5ft (RKB - 16.5')
Site Error:	0.0ft	North Reference:	True
Reference Well:	Meehl 01N-65W-24-3N	Survey Calculation Method:	Minimum Curvature
Well Error:	0.0ft	Output errors are at	2.00 sigma
Reference Wellbore	Wellbore #1	Database:	landmark
Reference Design:	Plan #1 (10-17-14)	Offset TVD Reference:	Offset Datum

Offset Design												Offset Site Error:	0.0 ft
Survey Program: 0-MWD												Offset Well Error:	0.0 ft
Reference		Offset		Semi Major Axis			Distance						Warning
Measured Depth (ft)	Vertical Depth (ft)	Measured Depth (ft)	Vertical Depth (ft)	Reference (ft)	Offset (ft)	Highside Toolface (°)	Offset Wellbore Centre +N/-S (ft)	+E/-W (ft)	Between Centres (ft)	Between Ellipses (ft)	Minimum Separation (ft)	Separation Factor	
6,400.0	6,385.8	6,414.4	6,385.8	14.2	16.3	-90.07	-220.6	-446.4	330.2	301.7	28.48	11.592	
6,500.0	6,485.8	6,514.4	6,485.8	14.4	16.5	-90.07	-220.6	-446.4	330.2	301.3	28.88	11.431	
6,600.0	6,585.8	6,614.4	6,585.8	14.6	16.7	-90.07	-220.6	-446.4	330.2	300.9	29.29	11.274	
6,620.6	6,606.4	6,635.0	6,606.4	14.6	16.7	-90.37	-220.6	-446.4	330.2	300.8	29.37	11.242	
6,700.0	6,685.3	6,713.9	6,685.3	14.8	16.8	-91.72	-220.6	-446.4	330.3	300.7	29.60	11.161	
6,800.0	6,781.4	6,810.0	6,781.4	14.9	17.0	-95.98	-220.6	-446.4	332.2	302.6	29.67	11.197	
6,900.0	6,870.6	6,912.8	6,883.8	14.9	17.2	-101.91	-212.6	-446.3	338.6	309.1	29.55	11.459	
7,000.0	6,949.6	7,026.4	6,992.5	15.0	17.3	-107.58	-180.7	-446.2	348.6	319.3	29.24	11.923	
7,100.0	7,015.4	7,151.8	7,101.4	15.0	17.3	-112.68	-119.2	-445.9	360.6	331.8	28.76	12.540	
7,200.0	7,065.8	7,290.4	7,200.8	15.2	17.3	-116.90	-23.2	-445.5	372.4	344.1	28.30	13.162	
7,300.0	7,098.7	7,441.6	7,276.3	15.7	17.4	-119.84	107.2	-445.0	381.6	353.3	28.21	13.526	
7,400.0	7,113.1	7,601.4	7,312.1	16.3	17.8	-121.14	262.3	-444.3	385.8	356.8	28.93	13.336	
7,500.0	7,113.3	7,716.7	7,313.2	17.2	18.5	-121.19	377.6	-443.8	385.9	355.6	30.29	12.741	
7,600.0	7,112.9	7,816.7	7,312.8	18.1	19.4	-121.20	477.6	-443.4	386.0	354.1	31.91	12.095	
7,700.0	7,112.4	7,916.7	7,312.5	19.2	20.4	-121.22	577.6	-443.0	386.1	352.3	33.79	11.424	
7,800.0	7,111.9	8,016.7	7,312.1	20.5	21.6	-121.23	677.6	-442.6	386.1	350.2	35.89	10.759	
7,900.0	7,111.5	8,116.7	7,311.8	21.8	22.9	-121.25	777.6	-442.2	386.2	348.0	38.16	10.119	
8,000.0	7,111.0	8,216.7	7,311.4	23.2	24.2	-121.27	877.6	-441.7	386.2	345.7	40.59	9.516	
8,100.0	7,110.5	8,316.7	7,311.1	24.7	25.7	-121.28	977.6	-441.3	386.3	343.2	43.14	8.955	
8,200.0	7,110.0	8,416.7	7,310.7	26.2	27.1	-121.30	1,077.6	-440.9	386.4	340.6	45.79	8.438	
8,300.0	7,109.6	8,516.7	7,310.4	27.8	28.7	-121.31	1,177.5	-440.5	386.4	337.9	48.53	7.963	
8,400.0	7,109.1	8,616.7	7,310.0	29.4	30.3	-121.33	1,277.5	-440.1	386.5	335.2	51.34	7.528	
8,500.0	7,108.6	8,716.7	7,309.7	31.1	31.9	-121.34	1,377.5	-439.6	386.6	332.3	54.22	7.130	
8,600.0	7,108.2	8,816.7	7,309.3	32.8	33.5	-121.36	1,477.5	-439.2	386.6	329.5	57.14	6.766	
8,700.0	7,107.7	8,916.7	7,309.0	34.5	35.2	-121.37	1,577.5	-438.8	386.7	326.6	60.11	6.433	
8,800.0	7,107.2	9,016.7	7,308.7	36.2	36.9	-121.39	1,677.5	-438.4	386.7	323.6	63.11	6.128	
8,900.0	7,106.7	9,116.7	7,308.3	37.9	38.6	-121.41	1,777.5	-438.0	386.8	320.7	66.15	5.847	
9,000.0	7,106.3	9,216.7	7,308.0	39.7	40.3	-121.42	1,877.5	-437.5	386.9	317.7	69.22	5.589	
9,100.0	7,105.8	9,316.7	7,307.6	41.5	42.1	-121.44	1,977.5	-437.1	386.9	314.6	72.31	5.351	
9,200.0	7,105.3	9,416.7	7,307.3	43.3	43.8	-121.45	2,077.5	-436.7	387.0	311.6	75.42	5.131	
9,300.0	7,104.9	9,516.7	7,306.9	45.1	45.6	-121.47	2,177.5	-436.3	387.1	308.5	78.55	4.928	
9,400.0	7,104.4	9,616.7	7,306.6	46.9	47.4	-121.48	2,277.5	-435.9	387.1	305.4	81.69	4.739	
9,500.0	7,103.9	9,716.7	7,306.2	48.7	49.2	-121.50	2,377.5	-435.4	387.2	302.3	84.85	4.563	
9,600.0	7,103.4	9,816.7	7,305.9	50.5	51.0	-121.51	2,477.5	-435.0	387.2	299.2	88.03	4.399	
9,700.0	7,103.0	9,916.7	7,305.5	52.3	52.8	-121.53	2,577.5	-434.6	387.3	296.1	91.21	4.246	
9,800.0	7,102.5	10,016.7	7,305.2	54.2	54.6	-121.55	2,677.5	-434.2	387.4	293.0	94.40	4.103	
9,900.0	7,102.0	10,116.7	7,304.8	56.0	56.4	-121.56	2,777.5	-433.8	387.4	289.8	97.61	3.969	
10,000.0	7,101.6	10,216.7	7,304.5	57.8	58.3	-121.58	2,877.5	-433.3	387.5	286.7	100.82	3.844	
10,100.0	7,101.1	10,316.7	7,304.1	59.7	60.1	-121.59	2,977.5	-432.9	387.6	283.5	104.04	3.725	
10,200.0	7,100.6	10,416.7	7,303.8	61.5	61.9	-121.61	3,077.5	-432.5	387.6	280.4	107.26	3.614	
10,300.0	7,100.1	10,516.7	7,303.4	63.4	63.8	-121.62	3,177.5	-432.1	387.7	277.2	110.49	3.509	
10,400.0	7,099.7	10,616.7	7,303.1	65.3	65.6	-121.64	3,277.5	-431.6	387.8	274.0	113.73	3.410	
10,500.0	7,099.2	10,716.7	7,302.7	67.1	67.5	-121.65	3,377.5	-431.2	387.8	270.9	116.97	3.316	
10,600.0	7,098.7	10,816.7	7,302.4	69.0	69.3	-121.67	3,477.5	-430.8	387.9	267.7	120.21	3.227	
10,700.0	7,098.3	10,916.7	7,302.0	70.9	71.2	-121.68	3,577.5	-430.4	387.9	264.5	123.46	3.142	
10,800.0	7,097.8	11,016.7	7,301.7	72.7	73.1	-121.70	3,677.5	-430.0	388.0	261.3	126.71	3.062	
10,900.0	7,097.3	11,116.7	7,301.3	74.6	74.9	-121.72	3,777.5	-429.5	388.1	258.1	129.97	2.986	
11,000.0	7,096.8	11,216.7	7,301.0	76.5	76.8	-121.73	3,877.5	-429.1	388.1	254.9	133.23	2.913	
11,100.0	7,096.4	11,316.7	7,300.6	78.4	78.7	-121.75	3,977.5	-428.7	388.2	251.7	136.49	2.844	
11,200.0	7,095.9	11,416.7	7,300.3	80.2	80.5	-121.76	4,077.5	-428.3	388.3	248.5	139.75	2.778	
11,300.0	7,095.4	11,516.7	7,299.9	82.1	82.4	-121.78	4,177.5	-427.9	388.3	245.3	143.01	2.715	
11,400.0	7,095.0	11,616.7	7,299.6	84.0	84.3	-121.79	4,277.5	-427.4	388.4	242.1	146.28	2.655	

CC - Min centre to center distance or convergent point, SF - min separation factor, ES - min ellipse separation

Company:	Verdad Oil & Gas Corporation	Local Co-ordinate Reference:	Well Meehl 01N-65W-24-3N
Project:	SEC.24-T1N-R65W	TVD Reference:	WELL @ 5038.5ft (RKB - 16.5')
Reference Site:	Meehl 01N-65W-24 Pad Sec.24-T01N-R65W	MD Reference:	WELL @ 5038.5ft (RKB - 16.5')
Site Error:	0.0ft	North Reference:	True
Reference Well:	Meehl 01N-65W-24-3N	Survey Calculation Method:	Minimum Curvature
Well Error:	0.0ft	Output errors are at	2.00 sigma
Reference Wellbore	Wellbore #1	Database:	landmark
Reference Design:	Plan #1 (10-17-14)	Offset TVD Reference:	Offset Datum

Offset Design Meehl 01N-65W-24 Pad Sec.24-T01N-R65W - Meehl 01N-65W-24-1C - Wellbore #1 - Plan #1 (10-17-1													Offset Site Error:	0.0 ft
Survey Program: 0-MWD													Offset Well Error:	0.0 ft
Reference	Offset	Semi Major Axis			Distance									Warning
Measured Depth (ft)	Vertical Depth (ft)	Measured Depth (ft)	Vertical Depth (ft)	Reference (ft)	Offset (ft)	Highside Toolface (°)	Offset Wellbore Centre +N/-S (ft)	+E/-W (ft)	Between Centres (ft)	Between Ellipses (ft)	Minimum Separation (ft)	Separation Factor		
11,500.0	7,094.5	11,716.7	7,299.2	85.9	86.2	-121.81	4,377.5	-427.0	388.5	238.9	149.55	2.597		
11,600.0	7,094.0	11,816.7	7,298.9	87.8	88.0	-121.82	4,477.5	-426.6	388.5	235.7	152.82	2.542		
11,700.0	7,093.5	11,916.7	7,298.5	89.6	89.9	-121.84	4,577.5	-426.2	388.6	232.5	156.09	2.489		
11,709.2	7,093.5	11,924.9	7,298.5	89.8	90.1	-121.84	4,585.7	-426.1	388.6	232.2	156.38	2.485 SF		

Company:	Verdad Oil & Gas Corporation	Local Co-ordinate Reference:	Well Meehl 01N-65W-24-3N
Project:	SEC.24-T1N-R65W	TVD Reference:	WELL @ 5038.5ft (RKB - 16.5')
Reference Site:	Meehl 01N-65W-24 Pad Sec.24-T01N-R65W	MD Reference:	WELL @ 5038.5ft (RKB - 16.5')
Site Error:	0.0ft	North Reference:	True
Reference Well:	Meehl 01N-65W-24-3N	Survey Calculation Method:	Minimum Curvature
Well Error:	0.0ft	Output errors are at	2.00 sigma
Reference Wellbore	Wellbore #1	Database:	landmark
Reference Design:	Plan #1 (10-17-14)	Offset TVD Reference:	Offset Datum

Offset Design													Offset Site Error:	0.0 ft
Survey Program: 0-MWD													Offset Well Error:	0.0 ft
Reference		Offset		Semi Major Axis			Distance							Warning
Measured Depth (ft)	Vertical Depth (ft)	Measured Depth (ft)	Vertical Depth (ft)	Reference (ft)	Offset (ft)	Highside Toolface (°)	Offset Wellbore Centre +N/-S (ft)	+E/-W (ft)	Between Centres (ft)	Between Ellipses (ft)	Minimum Separation (ft)	Separation Factor		
0.0	0.0	0.0	0.0	0.0	0.0	-88.61	0.4	-14.8	14.8	14.8	0.00	N/A		
100.0	100.0	100.0	100.0	0.1	0.1	-88.61	0.4	-14.8	14.8	14.6	0.22	66.053		
200.0	200.0	200.0	200.0	0.3	0.3	-88.61	0.4	-14.8	14.8	14.2	0.67	22.018		
300.0	300.0	300.0	300.0	0.6	0.6	-88.61	0.4	-14.8	14.8	13.7	1.12	13.211		
400.0	400.0	400.0	400.0	0.8	0.8	-88.61	0.4	-14.8	14.8	13.3	1.57	9.436		
500.0	500.0	500.0	500.0	1.0	1.0	-88.61	0.4	-14.8	14.8	12.8	2.02	7.339		
600.0	600.0	600.0	600.0	1.2	1.2	-88.61	0.4	-14.8	14.8	12.4	2.47	6.005		
700.0	700.0	700.0	700.0	1.5	1.5	-88.61	0.4	-14.8	14.8	11.9	2.92	5.081		
800.0	800.0	800.0	800.0	1.7	1.7	-88.61	0.4	-14.8	14.8	11.5	3.37	4.404		
900.0	900.0	900.0	900.0	1.9	1.9	-88.61	0.4	-14.8	14.8	11.0	3.82	3.885		
1,000.0	1,000.0	1,000.0	1,000.0	2.1	2.1	-88.61	0.4	-14.8	14.8	10.6	4.27	3.476 CC		
1,100.0	1,100.0	1,099.6	1,099.6	2.4	2.3	-92.64	-0.7	-16.2	16.2	11.5	4.70	3.449		
1,200.0	1,200.0	1,198.9	1,198.7	2.6	2.5	-101.35	-4.0	-20.2	20.6	15.5	5.11	4.032		
1,300.0	1,300.0	1,297.8	1,297.2	2.8	2.7	-109.58	-9.5	-26.7	28.5	23.0	5.53	5.159		
1,400.0	1,400.0	1,396.2	1,394.9	3.0	2.9	-115.45	-17.1	-35.8	40.0	34.1	5.96	6.716		
1,500.0	1,500.0	1,495.3	1,493.2	3.3	3.2	-118.94	-25.3	-45.8	52.8	46.4	6.39	8.262		
1,600.0	1,600.0	1,594.5	1,591.5	3.5	3.5	-121.06	-33.6	-55.8	65.7	58.9	6.83	9.619		
1,700.0	1,700.0	1,693.8	1,690.0	3.7	3.7	30.22	-41.9	-65.8	77.1	69.9	7.21	10.693		
1,800.0	1,799.8	1,793.4	1,788.8	3.9	4.0	30.72	-50.2	-75.8	85.6	78.0	7.60	11.268		
1,900.0	1,899.5	1,893.2	1,887.7	4.0	4.3	32.28	-58.5	-85.9	91.1	83.1	7.99	11.404		
2,000.0	1,998.8	1,993.1	1,986.7	4.2	4.6	34.69	-66.9	-95.9	94.2	85.8	8.40	11.211		
2,100.0	2,098.0	2,093.0	2,085.8	4.5	4.9	37.10	-75.2	-105.9	97.2	88.4	8.84	10.991		
2,200.0	2,197.3	2,192.9	2,184.8	4.7	5.2	39.35	-83.6	-116.0	100.3	91.0	9.30	10.790		
2,300.0	2,296.6	2,292.7	2,283.8	4.9	5.5	41.47	-91.9	-126.0	103.6	93.9	9.77	10.606		
2,400.0	2,395.9	2,392.6	2,382.8	5.2	5.8	43.46	-100.2	-136.1	107.1	96.8	10.26	10.435		
2,500.0	2,495.1	2,492.5	2,481.8	5.4	6.2	45.32	-108.6	-146.1	110.6	99.8	10.76	10.278		
2,600.0	2,594.4	2,592.4	2,580.8	5.7	6.5	47.06	-116.9	-156.2	114.3	103.0	11.28	10.131		
2,700.0	2,693.7	2,692.2	2,679.9	6.0	6.8	48.69	-125.2	-166.2	118.0	106.2	11.81	9.996		
2,800.0	2,793.0	2,792.1	2,778.9	6.2	7.1	50.22	-133.6	-176.3	121.9	109.5	12.35	9.870		
2,900.0	2,892.2	2,892.0	2,877.9	6.5	7.5	51.66	-141.9	-186.3	125.8	112.9	12.90	9.753		
3,000.0	2,991.5	2,991.9	2,976.9	6.8	7.8	53.01	-150.2	-196.4	129.8	116.3	13.46	9.644		
3,100.0	3,090.8	3,091.7	3,075.9	7.1	8.1	54.28	-158.6	-206.4	133.9	119.8	14.03	9.543		
3,200.0	3,190.0	3,191.6	3,174.9	7.4	8.4	55.47	-166.9	-216.5	138.0	123.4	14.60	9.449		
3,300.0	3,289.3	3,291.5	3,274.0	7.7	8.8	56.59	-175.2	-226.5	142.2	127.0	15.19	9.361		
3,400.0	3,388.6	3,391.4	3,373.0	8.0	9.1	57.65	-183.6	-236.6	146.4	130.6	15.78	9.280		
3,500.0	3,487.9	3,491.2	3,472.0	8.3	9.4	58.65	-191.9	-246.6	150.7	134.3	16.37	9.204		
3,600.0	3,587.1	3,591.1	3,571.0	8.6	9.8	59.59	-200.3	-256.7	155.0	138.0	16.97	9.133		
3,700.0	3,686.4	3,693.0	3,672.1	8.9	10.1	60.55	-208.5	-266.7	159.2	141.6	17.56	9.063		
3,800.0	3,786.0	3,797.6	3,776.1	9.1	10.3	61.37	-214.9	-274.4	162.2	144.2	18.05	8.990		
3,900.0	3,885.8	3,902.1	3,880.5	9.3	10.5	61.87	-218.9	-279.2	164.2	145.7	18.48	8.885		
4,000.0	3,985.8	4,006.8	3,985.1	9.5	10.7	62.06	-220.5	-281.1	164.9	146.1	18.86	8.747		
4,100.0	4,085.8	4,107.4	4,085.8	9.7	10.9	-90.12	-220.5	-281.1	164.9	145.7	19.21	8.586		
4,200.0	4,185.8	4,207.4	4,185.8	9.9	11.0	-90.12	-220.5	-281.1	164.9	145.4	19.57	8.427		
4,300.0	4,285.8	4,307.4	4,285.8	10.0	11.2	-90.12	-220.5	-281.1	164.9	145.0	19.94	8.273		
4,400.0	4,385.8	4,407.4	4,385.8	10.2	11.4	-90.12	-220.5	-281.1	164.9	144.6	20.31	8.122		
4,500.0	4,485.8	4,507.4	4,485.8	10.4	11.5	-90.12	-220.5	-281.1	164.9	144.3	20.68	7.976		
4,600.0	4,585.8	4,607.4	4,585.8	10.6	11.7	-90.12	-220.5	-281.1	164.9	143.9	21.06	7.834		
4,700.0	4,685.8	4,707.4	4,685.8	10.8	11.9	-90.12	-220.5	-281.1	164.9	143.5	21.43	7.696		
4,800.0	4,785.8	4,807.4	4,785.8	11.0	12.0	-90.12	-220.5	-281.1	164.9	143.1	21.81	7.561		
4,900.0	4,885.8	4,907.4	4,885.8	11.2	12.2	-90.12	-220.5	-281.1	164.9	142.7	22.20	7.431		
5,000.0	4,985.8	5,007.4	4,985.8	11.4	12.4	-90.12	-220.5	-281.1	164.9	142.4	22.58	7.304		
5,100.0	5,085.8	5,107.4	5,085.8	11.6	12.6	-90.12	-220.5	-281.1	164.9	142.0	22.97	7.180		

CC - Min centre to center distance or convergent point, SF - min separation factor, ES - min ellipse separation

Company:	Verdad Oil & Gas Corporation	Local Co-ordinate Reference:	Well Meehl 01N-65W-24-3N
Project:	SEC.24-T1N-R65W	TVD Reference:	WELL @ 5038.5ft (RKB - 16.5')
Reference Site:	Meehl 01N-65W-24 Pad Sec.24-T01N-R65W	MD Reference:	WELL @ 5038.5ft (RKB - 16.5')
Site Error:	0.0ft	North Reference:	True
Reference Well:	Meehl 01N-65W-24-3N	Survey Calculation Method:	Minimum Curvature
Well Error:	0.0ft	Output errors are at	2.00 sigma
Reference Wellbore	Wellbore #1	Database:	landmark
Reference Design:	Plan #1 (10-17-14)	Offset TVD Reference:	Offset Datum

Offset Design												Offset Site Error:	0.0 ft
Survey Program: 0-MWD												Offset Well Error:	0.0 ft
Reference		Offset		Semi Major Axis			Distance						
Measured Depth (ft)	Vertical Depth (ft)	Measured Depth (ft)	Vertical Depth (ft)	Reference (ft)	Offset (ft)	Highside Toolface (°)	Offset Wellbore Centre +N/-S (ft)	+E/-W (ft)	Between Centres (ft)	Between Ellipses (ft)	Minimum Separation (ft)	Separation Factor	Warning
5,200.0	5,185.8	5,207.4	5,185.8	11.8	12.7	-90.12	-220.5	-281.1	164.9	141.6	23.36	7.060	
5,300.0	5,285.8	5,307.4	5,285.8	12.0	12.9	-90.12	-220.5	-281.1	164.9	141.2	23.75	6.944	
5,400.0	5,385.8	5,407.4	5,385.8	12.2	13.1	-90.12	-220.5	-281.1	164.9	140.8	24.15	6.830	
5,500.0	5,485.8	5,507.4	5,485.8	12.4	13.3	-90.12	-220.5	-281.1	164.9	140.4	24.55	6.720	
5,600.0	5,585.8	5,607.4	5,585.8	12.6	13.5	-90.12	-220.5	-281.1	164.9	140.0	24.94	6.613	
5,700.0	5,685.8	5,707.4	5,685.8	12.8	13.7	-90.12	-220.5	-281.1	164.9	139.6	25.34	6.508	
5,800.0	5,785.8	5,807.4	5,785.8	13.0	13.8	-90.12	-220.5	-281.1	164.9	139.2	25.74	6.407	
5,900.0	5,885.8	5,907.4	5,885.8	13.2	14.0	-90.12	-220.5	-281.1	164.9	138.8	26.15	6.308	
6,000.0	5,985.8	6,007.4	5,985.8	13.4	14.2	-90.12	-220.5	-281.1	164.9	138.4	26.55	6.212	
6,100.0	6,085.8	6,107.4	6,085.8	13.6	14.4	-90.12	-220.5	-281.1	164.9	138.0	26.96	6.118	
6,200.0	6,185.8	6,207.4	6,185.8	13.8	14.6	-90.12	-220.5	-281.1	164.9	137.6	27.37	6.027	
6,300.0	6,285.8	6,307.4	6,285.8	14.0	14.8	-90.12	-220.5	-281.1	164.9	137.2	27.77	5.939	
6,400.0	6,385.8	6,407.4	6,385.8	14.2	15.0	-90.12	-220.5	-281.1	164.9	136.8	28.18	5.852	
6,500.0	6,485.8	6,507.4	6,485.8	14.4	15.2	-90.12	-220.5	-281.1	164.9	136.3	28.60	5.768	
6,600.0	6,585.8	6,607.4	6,585.8	14.6	15.4	-90.12	-220.5	-281.1	164.9	135.9	29.01	5.686	
6,700.0	6,685.3	6,707.6	6,685.5	14.8	15.5	-90.35	-212.2	-281.1	164.9	135.6	29.35	5.619	
6,800.0	6,781.4	6,807.8	6,781.8	14.9	15.6	-90.33	-185.1	-281.0	164.9	135.4	29.54	5.583	
6,900.0	6,870.6	6,908.0	6,871.1	14.9	15.7	-90.30	-140.0	-280.8	164.9	135.3	29.65	5.563	
7,000.0	6,949.6	7,008.1	6,950.1	15.0	15.7	-90.26	-78.7	-280.5	164.9	135.2	29.77	5.541	
7,100.0	7,015.4	7,108.3	7,015.9	15.0	15.7	-90.21	-3.5	-280.2	164.9	134.9	30.04	5.491	
7,200.0	7,065.8	7,208.4	7,066.2	15.2	15.8	-90.15	82.9	-279.9	164.9	134.4	30.57	5.396	
7,300.0	7,098.7	7,308.4	7,099.0	15.7	16.0	-90.09	177.3	-279.5	164.9	133.5	31.45	5.245	
7,400.0	7,113.1	7,408.5	7,113.1	16.3	16.6	-90.02	276.2	-279.1	164.9	132.2	32.69	5.045	
7,500.0	7,113.3	7,508.5	7,113.3	17.2	17.4	-90.00	376.2	-278.6	164.9	130.6	34.29	4.810	
7,600.0	7,112.9	7,608.5	7,112.9	18.1	18.4	-90.00	476.2	-278.2	164.9	128.7	36.22	4.554	
7,700.0	7,112.4	7,708.5	7,112.4	19.2	19.5	-90.00	576.2	-277.8	164.9	126.5	38.43	4.292	
7,800.0	7,111.9	7,808.5	7,111.9	20.5	20.7	-90.00	676.2	-277.4	164.9	124.0	40.89	4.034	
7,900.0	7,111.5	7,908.5	7,111.4	21.8	22.0	-90.00	776.2	-277.0	164.9	121.4	43.54	3.788	
8,000.0	7,111.0	8,008.5	7,111.0	23.2	23.4	-90.00	876.2	-276.5	164.9	118.6	46.35	3.558	
8,100.0	7,110.5	8,108.5	7,110.5	24.7	24.9	-90.00	976.2	-276.1	164.9	115.6	49.31	3.345	
8,200.0	7,110.0	8,208.5	7,110.0	26.2	26.4	-90.00	1,076.2	-275.7	164.9	112.6	52.37	3.149	
8,300.0	7,109.6	8,308.5	7,109.6	27.8	28.0	-90.00	1,176.2	-275.3	164.9	109.4	55.53	2.970	
8,400.0	7,109.1	8,408.5	7,109.1	29.4	29.6	-90.00	1,276.2	-274.9	164.9	106.2	58.77	2.806	
8,500.0	7,108.6	8,508.5	7,108.6	31.1	31.2	-90.00	1,376.1	-274.4	164.9	102.9	62.08	2.657	
8,600.0	7,108.2	8,608.5	7,108.2	32.8	32.9	-90.00	1,476.1	-274.0	164.9	99.5	65.44	2.520	
8,700.0	7,107.7	8,708.5	7,107.7	34.5	34.6	-90.00	1,576.1	-273.6	164.9	96.1	68.86	2.395	
8,800.0	7,107.2	8,808.5	7,107.2	36.2	36.3	-90.00	1,676.1	-273.2	164.9	92.6	72.31	2.281	
8,900.0	7,106.7	8,908.5	7,106.7	37.9	38.0	-90.00	1,776.1	-272.8	164.9	89.1	75.80	2.176	
9,000.0	7,106.3	9,008.5	7,106.3	39.7	39.8	-90.00	1,876.1	-272.3	164.9	85.6	79.32	2.079	
9,100.0	7,105.8	9,108.5	7,105.8	41.5	41.6	-90.00	1,976.1	-271.9	164.9	82.1	82.87	1.990	
9,200.0	7,105.3	9,208.5	7,105.3	43.3	43.4	-90.00	2,076.1	-271.5	164.9	78.5	86.44	1.908	
9,300.0	7,104.9	9,308.5	7,104.9	45.1	45.1	-90.00	2,176.1	-271.1	164.9	74.9	90.04	1.832	
9,400.0	7,104.4	9,408.5	7,104.4	46.9	46.9	-90.00	2,276.1	-270.7	164.9	71.3	93.65	1.761	
9,500.0	7,103.9	9,508.5	7,103.9	48.7	48.8	-90.00	2,376.1	-270.2	164.9	67.6	97.28	1.695	
9,600.0	7,103.4	9,608.5	7,103.4	50.5	50.6	-90.00	2,476.1	-269.8	164.9	64.0	100.92	1.634	
9,700.0	7,103.0	9,708.5	7,103.0	52.3	52.4	-90.00	2,576.1	-269.4	164.9	60.3	104.58	1.577	
9,800.0	7,102.5	9,808.5	7,102.5	54.2	54.2	-90.00	2,676.1	-269.0	164.9	56.7	108.25	1.524	
9,900.0	7,102.0	9,908.5	7,102.0	56.0	56.1	-90.00	2,776.1	-268.6	164.9	53.0	111.92	1.474 Level 3	
10,000.0	7,101.6	10,008.5	7,101.6	57.8	57.9	-90.00	2,876.1	-268.1	164.9	49.3	115.61	1.427 Level 3	
10,100.0	7,101.1	10,108.5	7,101.1	59.7	59.7	-90.00	2,976.1	-267.7	164.9	45.6	119.31	1.382 Level 3	
10,200.0	7,100.6	10,208.5	7,100.6	61.5	61.6	-90.00	3,076.1	-267.3	164.9	41.9	123.02	1.341 Level 3	
10,300.0	7,100.1	10,308.5	7,100.1	63.4	63.4	-90.00	3,176.1	-266.9	164.9	38.2	126.73	1.301 Level 3	

CC - Min centre to center distance or convergent point, SF - min separation factor, ES - min ellipse separation

Company:	Verdad Oil & Gas Corporation	Local Co-ordinate Reference:	Well Meehl 01N-65W-24-3N
Project:	SEC.24-T1N-R65W	TVD Reference:	WELL @ 5038.5ft (RKB - 16.5')
Reference Site:	Meehl 01N-65W-24 Pad Sec.24-T01N-R65W	MD Reference:	WELL @ 5038.5ft (RKB - 16.5')
Site Error:	0.0ft	North Reference:	True
Reference Well:	Meehl 01N-65W-24-3N	Survey Calculation Method:	Minimum Curvature
Well Error:	0.0ft	Output errors are at	2.00 sigma
Reference Wellbore	Wellbore #1	Database:	landmark
Reference Design:	Plan #1 (10-17-14)	Offset TVD Reference:	Offset Datum

Offset Design Meehl 01N-65W-24 Pad Sec.24-T01N-R65W - Meehl 01N-65W-24-2N - Wellbore #1 - Plan #1 (10-17-1												Offset Site Error:	0.0 ft
Survey Program: 0-MWD												Offset Well Error:	0.0 ft
Reference	Offset	Semi Major Axis		Distance									
Measured Depth (ft)	Vertical Depth (ft)	Measured Depth (ft)	Vertical Depth (ft)	Reference (ft)	Offset (ft)	Highside Toolface (°)	Offset Wellbore Centre +N/-S (ft)	+E/-W (ft)	Between Centres (ft)	Between Ellipses (ft)	Minimum Separation (ft)	Separation Factor	Warning
10,400.0	7,099.7	10,408.5	7,099.7	65.3	65.3	-90.00	3,276.1	-266.5	164.9	34.5	130.45	1.264	Level 3
10,500.0	7,099.2	10,508.5	7,099.2	67.1	67.2	-90.00	3,376.1	-266.0	164.9	30.7	134.17	1.229	Level 2
10,600.0	7,098.7	10,608.5	7,098.7	69.0	69.0	-90.00	3,476.1	-265.6	164.9	27.0	137.90	1.196	Level 2
10,700.0	7,098.3	10,708.5	7,098.3	70.9	70.9	-90.00	3,576.1	-265.2	164.9	23.3	141.64	1.164	Level 2
10,800.0	7,097.8	10,808.5	7,097.8	72.7	72.8	-90.00	3,676.1	-264.8	164.9	19.5	145.38	1.134	Level 2
10,900.0	7,097.3	10,908.5	7,097.3	74.6	74.6	-90.00	3,776.1	-264.3	164.9	15.8	149.13	1.106	Level 2
11,000.0	7,096.8	11,008.5	7,096.8	76.5	76.5	-90.00	3,876.1	-263.9	164.9	12.0	152.88	1.079	Level 2
11,100.0	7,096.4	11,108.5	7,096.4	78.4	78.4	-90.00	3,976.1	-263.5	164.9	8.3	156.63	1.053	Level 2
11,200.0	7,095.9	11,208.5	7,095.9	80.2	80.2	-90.00	4,076.1	-263.1	164.9	4.5	160.39	1.028	Level 2
11,300.0	7,095.4	11,308.5	7,095.4	82.1	82.1	-90.00	4,176.1	-262.7	164.9	0.8	164.15	1.005	Level 2
11,400.0	7,095.0	11,408.5	7,095.0	84.0	84.0	-90.00	4,276.1	-262.2	164.9	-3.0	167.91	0.982	Level 1
11,500.0	7,094.5	11,508.5	7,094.5	85.9	85.9	-90.00	4,376.1	-261.8	164.9	-6.8	171.68	0.961	Level 1
11,600.0	7,094.0	11,608.5	7,094.0	87.8	87.8	-90.00	4,476.1	-261.4	164.9	-10.5	175.45	0.940	Level 1
11,700.0	7,093.5	11,708.5	7,093.5	89.6	89.6	-90.00	4,576.1	-261.0	164.9	-14.3	179.19	0.920	Level 1
11,708.4	7,093.5	11,716.9	7,093.5	89.8	89.8	-90.00	4,584.5	-261.0	164.9	-14.6	179.47	0.919	Level 1
11,709.2	7,093.5	11,717.3	7,093.5	89.8	89.8	-90.00	4,584.9	-261.0	164.9	-14.6	179.49	0.919	Level 1, ES, SF

Company:	Verdad Oil & Gas Corporation	Local Co-ordinate Reference:	Well Meehl 01N-65W-24-3N
Project:	SEC.24-T1N-R65W	TVD Reference:	WELL @ 5038.5ft (RKB - 16.5')
Reference Site:	Meehl 01N-65W-24 Pad Sec.24-T01N-R65W	MD Reference:	WELL @ 5038.5ft (RKB - 16.5')
Site Error:	0.0ft	North Reference:	True
Reference Well:	Meehl 01N-65W-24-3N	Survey Calculation Method:	Minimum Curvature
Well Error:	0.0ft	Output errors are at	2.00 sigma
Reference Wellbore	Wellbore #1	Database:	landmark
Reference Design:	Plan #1 (10-17-14)	Offset TVD Reference:	Offset Datum

Offset Design													Offset Site Error:	0.0 ft
Survey Program: 0-MWD													Offset Well Error:	0.0 ft
Reference		Offset		Semi Major Axis			Distance							Warning
Measured Depth (ft)	Vertical Depth (ft)	Measured Depth (ft)	Vertical Depth (ft)	Reference (ft)	Offset (ft)	Highside Toolface (°)	Offset Wellbore Centre +N/-S (ft)	+E/-W (ft)	Between Centres (ft)	Between Ellipses (ft)	Minimum Separation (ft)	Separation Factor		
0.0	0.0	0.0	0.0	0.0	0.0	88.62	0.4	15.1	15.1	15.1	0.00	N/A		
100.0	100.0	100.0	100.0	0.1	0.1	88.62	0.4	15.1	15.1	14.9	0.22	67.299		
200.0	200.0	200.0	200.0	0.3	0.3	88.62	0.4	15.1	15.1	14.5	0.67	22.433		
300.0	300.0	300.0	300.0	0.6	0.6	88.62	0.4	15.1	15.1	14.0	1.12	13.460		
400.0	400.0	400.0	400.0	0.8	0.8	88.62	0.4	15.1	15.1	13.6	1.57	9.614		
500.0	500.0	500.0	500.0	1.0	1.0	88.62	0.4	15.1	15.1	13.1	2.02	7.478		
600.0	600.0	600.0	600.0	1.2	1.2	88.62	0.4	15.1	15.1	12.7	2.47	6.118		
700.0	700.0	700.0	700.0	1.5	1.5	88.62	0.4	15.1	15.1	12.2	2.92	5.177		
800.0	800.0	800.0	800.0	1.7	1.7	88.62	0.4	15.1	15.1	11.8	3.37	4.487		
900.0	900.0	900.0	900.0	1.9	1.9	88.62	0.4	15.1	15.1	11.3	3.82	3.959		
1,000.0	1,000.0	1,000.0	1,000.0	2.1	2.1	88.62	0.4	15.1	15.1	10.9	4.27	3.542		
1,100.0	1,100.0	1,100.0	1,100.0	2.4	2.4	88.62	0.4	15.1	15.1	10.4	4.72	3.205		
1,200.0	1,200.0	1,200.0	1,200.0	2.6	2.6	88.62	0.4	15.1	15.1	10.0	5.17	2.926		
1,300.0	1,300.0	1,300.0	1,300.0	2.8	2.8	88.62	0.4	15.1	15.1	9.5	5.62	2.692		
1,400.0	1,400.0	1,400.0	1,400.0	3.0	3.0	88.62	0.4	15.1	15.1	9.1	6.07	2.493		
1,500.0	1,500.0	1,500.0	1,500.0	3.3	3.3	88.62	0.4	15.1	15.1	8.6	6.52	2.321		
1,600.0	1,600.0	1,600.0	1,600.0	3.5	3.5	88.62	0.4	15.1	15.1	8.2	6.97	2.171 CC		
1,700.0	1,700.0	1,700.0	1,700.0	3.7	3.7	-124.63	0.4	15.1	16.1	8.7	7.39	2.172		
1,800.0	1,799.8	1,799.8	1,799.8	3.9	3.9	-137.33	0.4	15.1	19.5	11.7	7.78	2.507		
1,900.0	1,899.5	1,899.8	1,899.8	4.0	4.1	-146.60	-1.4	15.4	25.9	17.8	8.14	3.186		
2,000.0	1,998.8	1,999.8	1,999.7	4.2	4.3	-149.15	-6.5	16.2	33.9	25.4	8.49	3.997		
2,100.0	2,098.0	2,100.1	2,099.5	4.5	4.5	-146.52	-15.2	17.5	41.0	32.1	8.87	4.619		
2,200.0	2,197.3	2,200.0	2,198.8	4.7	4.7	-141.33	-26.6	19.2	47.2	37.9	9.27	5.090		
2,300.0	2,296.6	2,299.7	2,297.8	4.9	4.9	-137.06	-38.4	21.0	53.7	44.0	9.71	5.532		
2,400.0	2,395.9	2,399.4	2,396.8	5.2	5.1	-133.72	-50.1	22.8	60.4	50.3	10.16	5.946		
2,500.0	2,495.1	2,499.1	2,495.8	5.4	5.3	-131.06	-61.8	24.6	67.3	56.7	10.63	6.328		
2,600.0	2,594.4	2,598.9	2,594.8	5.7	5.6	-128.90	-73.6	26.4	74.3	63.2	11.12	6.679		
2,700.0	2,693.7	2,698.6	2,693.8	6.0	5.8	-127.11	-85.3	28.2	81.4	69.8	11.63	6.999		
2,800.0	2,793.0	2,798.3	2,792.8	6.2	6.1	-125.61	-97.0	30.0	88.5	76.4	12.15	7.290		
2,900.0	2,892.2	2,898.0	2,891.8	6.5	6.3	-124.33	-108.8	31.8	95.8	83.1	12.67	7.555		
3,000.0	2,991.5	2,997.7	2,990.8	6.8	6.6	-123.23	-120.5	33.6	103.0	89.8	13.21	7.796		
3,100.0	3,090.8	3,097.5	3,089.9	7.1	6.9	-122.28	-132.2	35.4	110.3	96.5	13.76	8.016		
3,200.0	3,190.0	3,197.2	3,188.9	7.4	7.1	-121.45	-144.0	37.1	117.6	103.3	14.31	8.217		
3,300.0	3,289.3	3,296.9	3,287.9	7.7	7.4	-120.71	-155.7	38.9	124.9	110.0	14.87	8.400		
3,400.0	3,388.6	3,396.6	3,386.9	8.0	7.7	-120.05	-167.4	40.7	132.3	116.8	15.44	8.568		
3,500.0	3,487.9	3,496.3	3,485.9	8.3	8.0	-119.47	-179.2	42.5	139.6	123.6	16.01	8.723		
3,600.0	3,587.1	3,596.1	3,584.9	8.6	8.3	-118.94	-190.9	44.3	147.0	130.4	16.58	8.865		
3,700.0	3,686.4	3,696.0	3,684.1	8.9	8.6	-118.49	-202.6	46.1	154.3	137.1	17.15	8.995		
3,800.0	3,786.0	3,796.6	3,784.3	9.1	8.8	-118.19	-211.8	47.5	160.0	142.3	17.64	9.071		
3,900.0	3,885.8	3,897.3	3,884.9	9.3	9.0	-118.01	-217.5	48.4	163.5	145.4	18.08	9.046		
4,000.0	3,985.8	3,998.2	3,985.7	9.5	9.2	-117.95	-219.8	48.7	164.9	146.4	18.47	8.927		
4,100.0	4,085.8	4,098.3	4,085.8	9.7	9.4	89.87	-219.8	48.7	164.9	146.1	18.85	8.751		
4,200.0	4,185.8	4,198.3	4,185.8	9.9	9.6	89.87	-219.8	48.7	164.9	145.7	19.22	8.581		
4,300.0	4,285.8	4,298.3	4,285.8	10.0	9.8	89.87	-219.8	48.7	164.9	145.3	19.60	8.416		
4,400.0	4,385.8	4,398.3	4,385.8	10.2	10.0	89.87	-219.8	48.7	164.9	144.9	19.98	8.255		
4,500.0	4,485.8	4,498.3	4,485.8	10.4	10.2	89.87	-219.8	48.7	164.9	144.6	20.36	8.100		
4,600.0	4,585.8	4,598.3	4,585.8	10.6	10.4	89.87	-219.8	48.7	164.9	144.2	20.75	7.949		
4,700.0	4,685.8	4,698.3	4,685.8	10.8	10.6	89.87	-219.8	48.7	164.9	143.8	21.14	7.803		
4,800.0	4,785.8	4,798.3	4,785.8	11.0	10.8	89.87	-219.8	48.7	164.9	143.4	21.53	7.662		
4,900.0	4,885.8	4,898.3	4,885.8	11.2	11.0	89.87	-219.8	48.7	164.9	143.0	21.92	7.524		
5,000.0	4,985.8	4,998.3	4,985.8	11.4	11.2	89.87	-219.8	48.7	164.9	142.6	22.31	7.391		
5,100.0	5,085.8	5,098.3	5,085.8	11.6	11.4	89.87	-219.8	48.7	164.9	142.2	22.71	7.262		

CC - Min centre to center distance or convergent point, SF - min separation factor, ES - min ellipse separation

Company:	Verdad Oil & Gas Corporation	Local Co-ordinate Reference:	Well Meehl 01N-65W-24-3N
Project:	SEC.24-T1N-R65W	TVD Reference:	WELL @ 5038.5ft (RKB - 16.5')
Reference Site:	Meehl 01N-65W-24 Pad Sec.24-T01N-R65W	MD Reference:	WELL @ 5038.5ft (RKB - 16.5')
Site Error:	0.0ft	North Reference:	True
Reference Well:	Meehl 01N-65W-24-3N	Survey Calculation Method:	Minimum Curvature
Well Error:	0.0ft	Output errors are at	2.00 sigma
Reference Wellbore	Wellbore #1	Database:	landmark
Reference Design:	Plan #1 (10-17-14)	Offset TVD Reference:	Offset Datum

Offset Design												Offset Site Error:	0.0 ft
Survey Program: 0-MWD												Offset Well Error:	0.0 ft
Reference		Offset		Semi Major Axis			Distance						
Measured Depth (ft)	Vertical Depth (ft)	Measured Depth (ft)	Vertical Depth (ft)	Reference (ft)	Offset (ft)	Highside Toolface (°)	Offset Wellbore Centre +N/-S (ft)	+E/-W (ft)	Between Centres (ft)	Between Ellipses (ft)	Minimum Separation (ft)	Separation Factor	Warning
5,200.0	5,185.8	5,198.3	5,185.8	11.8	11.6	89.87	-219.8	48.7	164.9	141.8	23.11	7.136	
5,300.0	5,285.8	5,298.3	5,285.8	12.0	11.8	89.87	-219.8	48.7	164.9	141.4	23.51	7.015	
5,400.0	5,385.8	5,398.3	5,385.8	12.2	12.0	89.87	-219.8	48.7	164.9	141.0	23.91	6.896	
5,500.0	5,485.8	5,498.3	5,485.8	12.4	12.2	89.87	-219.8	48.7	164.9	140.6	24.32	6.782	
5,600.0	5,585.8	5,598.3	5,585.8	12.6	12.4	89.87	-219.8	48.7	164.9	140.2	24.72	6.670	
5,700.0	5,685.8	5,698.3	5,685.8	12.8	12.6	89.87	-219.8	48.7	164.9	139.8	25.13	6.562	
5,800.0	5,785.8	5,798.3	5,785.8	13.0	12.8	89.87	-219.8	48.7	164.9	139.4	25.54	6.457	
5,900.0	5,885.8	5,898.3	5,885.8	13.2	13.0	89.87	-219.8	48.7	164.9	139.0	25.95	6.355	
6,000.0	5,985.8	5,998.3	5,985.8	13.4	13.2	89.87	-219.8	48.7	164.9	138.6	26.36	6.256	
6,100.0	6,085.8	6,098.3	6,085.8	13.6	13.4	89.87	-219.8	48.7	164.9	138.1	26.77	6.160	
6,200.0	6,185.8	6,198.3	6,185.8	13.8	13.6	89.87	-219.8	48.7	164.9	137.7	27.19	6.066	
6,300.0	6,285.8	6,298.3	6,285.8	14.0	13.8	89.87	-219.8	48.7	164.9	137.3	27.60	5.975	
6,400.0	6,385.8	6,398.3	6,385.8	14.2	14.0	89.87	-219.8	48.7	164.9	136.9	28.02	5.886	
6,500.0	6,485.8	6,498.3	6,485.8	14.4	14.2	89.87	-219.8	48.7	164.9	136.5	28.44	5.800	
6,600.0	6,585.8	6,598.3	6,585.8	14.6	14.4	89.87	-219.8	48.7	164.9	136.1	28.85	5.716	
6,700.0	6,685.3	6,698.1	6,685.1	14.8	14.6	89.64	-211.6	48.8	164.9	135.7	29.20	5.648	
6,800.0	6,781.4	6,797.9	6,781.1	14.9	14.7	89.66	-184.6	48.9	164.9	135.5	29.40	5.610	
6,900.0	6,870.6	6,897.7	6,870.1	14.9	14.8	89.69	-139.9	49.1	164.9	135.4	29.51	5.588	
7,000.0	6,949.6	6,997.6	6,949.0	15.0	14.8	89.73	-79.0	49.3	164.9	135.3	29.65	5.562	
7,100.0	7,015.4	7,097.4	7,014.9	15.0	15.0	89.78	-4.1	49.6	164.9	135.0	29.94	5.509	
7,200.0	7,065.8	7,197.3	7,065.4	15.2	15.2	89.84	81.9	50.0	164.9	134.4	30.49	5.410	
7,300.0	7,098.7	7,297.3	7,098.5	15.7	15.7	89.91	176.1	50.4	164.9	133.5	31.38	5.255	
7,400.0	7,113.1	7,397.2	7,113.0	16.3	16.3	89.98	274.8	50.8	164.9	132.3	32.65	5.052	
7,500.0	7,113.3	7,497.2	7,113.3	17.2	17.1	90.00	374.8	51.2	164.9	130.7	34.25	4.815	
7,600.0	7,112.9	7,597.2	7,112.9	18.1	18.1	90.00	474.8	51.6	164.9	128.7	36.19	4.557	
7,700.0	7,112.4	7,697.2	7,112.4	19.2	19.2	90.00	574.8	52.1	164.9	126.5	38.42	4.293	
7,800.0	7,111.9	7,797.2	7,111.9	20.5	20.5	90.00	674.8	52.5	164.9	124.0	40.88	4.034	
7,900.0	7,111.5	7,897.2	7,111.5	21.8	21.8	90.00	774.8	52.9	164.9	121.4	43.54	3.788	
8,000.0	7,111.0	7,997.2	7,111.0	23.2	23.2	90.00	874.8	53.3	164.9	118.6	46.36	3.557	
8,100.0	7,110.5	8,097.2	7,110.5	24.7	24.7	90.00	974.8	53.7	164.9	115.6	49.32	3.344	
8,200.0	7,110.0	8,197.2	7,110.0	26.2	26.2	90.00	1,074.8	54.2	164.9	112.5	52.40	3.148	
8,300.0	7,109.6	8,297.2	7,109.6	27.8	27.8	90.00	1,174.8	54.6	164.9	109.4	55.56	2.968	
8,400.0	7,109.1	8,397.2	7,109.1	29.4	29.4	90.00	1,274.8	55.0	164.9	106.1	58.81	2.804	
8,500.0	7,108.6	8,497.2	7,108.6	31.1	31.1	90.00	1,374.8	55.4	164.9	102.8	62.12	2.655	
8,600.0	7,108.2	8,597.2	7,108.2	32.8	32.8	90.00	1,474.8	55.8	164.9	99.4	65.49	2.518	
8,700.0	7,107.7	8,697.2	7,107.7	34.5	34.5	90.00	1,574.8	56.3	164.9	96.0	68.90	2.394	
8,800.0	7,107.2	8,797.2	7,107.2	36.2	36.2	90.00	1,674.8	56.7	164.9	92.6	72.36	2.279	
8,900.0	7,106.7	8,897.2	7,106.7	37.9	37.9	90.00	1,774.8	57.1	164.9	89.1	75.85	2.174	
9,000.0	7,106.3	8,997.2	7,106.3	39.7	39.7	90.00	1,874.8	57.5	164.9	85.5	79.37	2.078	
9,100.0	7,105.8	9,097.2	7,105.8	41.5	41.5	90.00	1,974.8	57.9	164.9	82.0	82.93	1.989	
9,200.0	7,105.3	9,197.2	7,105.3	43.3	43.3	90.00	2,074.8	58.4	164.9	78.4	86.50	1.907	
9,300.0	7,104.9	9,297.2	7,104.9	45.1	45.1	90.00	2,174.7	58.8	164.9	74.8	90.09	1.831	
9,400.0	7,104.4	9,397.2	7,104.4	46.9	46.9	90.00	2,274.7	59.2	164.9	71.2	93.71	1.760	
9,500.0	7,103.9	9,497.2	7,103.9	48.7	48.7	90.00	2,374.7	59.6	164.9	67.6	97.34	1.694	
9,600.0	7,103.4	9,597.2	7,103.4	50.5	50.5	90.00	2,474.7	60.0	164.9	63.9	100.98	1.633	
9,700.0	7,103.0	9,697.2	7,103.0	52.3	52.3	90.00	2,574.7	60.4	164.9	60.3	104.64	1.576	
9,800.0	7,102.5	9,797.2	7,102.5	54.2	54.2	90.00	2,674.7	60.9	164.9	56.6	108.31	1.523	
9,900.0	7,102.0	9,897.2	7,102.0	56.0	56.0	90.00	2,774.7	61.3	164.9	52.9	111.99	1.473 Level 3	
10,000.0	7,101.6	9,997.2	7,101.6	57.8	57.9	90.00	2,874.7	61.7	164.9	49.2	115.68	1.426 Level 3	
10,100.0	7,101.1	10,097.2	7,101.1	59.7	59.7	90.00	2,974.7	62.1	164.9	45.5	119.38	1.381 Level 3	
10,200.0	7,100.6	10,197.2	7,100.6	61.5	61.6	90.00	3,074.7	62.5	164.9	41.8	123.08	1.340 Level 3	
10,300.0	7,100.1	10,297.2	7,100.1	63.4	63.4	90.00	3,174.7	63.0	164.9	38.1	126.80	1.301 Level 3	

CC - Min centre to center distance or convergent point, SF - min separation factor, ES - min ellipse separation

Company:	Verdad Oil & Gas Corporation	Local Co-ordinate Reference:	Well Meehl 01N-65W-24-3N
Project:	SEC.24-T1N-R65W	TVD Reference:	WELL @ 5038.5ft (RKB - 16.5')
Reference Site:	Meehl 01N-65W-24 Pad Sec.24-T01N-R65W	MD Reference:	WELL @ 5038.5ft (RKB - 16.5')
Site Error:	0.0ft	North Reference:	True
Reference Well:	Meehl 01N-65W-24-3N	Survey Calculation Method:	Minimum Curvature
Well Error:	0.0ft	Output errors are at	2.00 sigma
Reference Wellbore	Wellbore #1	Database:	landmark
Reference Design:	Plan #1 (10-17-14)	Offset TVD Reference:	Offset Datum

Offset Design Meehl 01N-65W-24 Pad Sec.24-T01N-R65W - Meehl 01N-65W-24-4N - Wellbore #1 - Plan #1 (10-17-1												Offset Site Error:	0.0 ft
Survey Program: 0-MWD												Offset Well Error:	0.0 ft
Reference	Offset	Semi Major Axis		Distance									
Measured Depth (ft)	Vertical Depth (ft)	Measured Depth (ft)	Vertical Depth (ft)	Reference (ft)	Offset (ft)	Highside Toolface (°)	Offset Wellbore Centre +N/-S (ft)	+E/-W (ft)	Between Centres (ft)	Between Ellipses (ft)	Minimum Separation (ft)	Separation Factor	Warning
10,400.0	7,099.7	10,397.2	7,099.7	65.3	65.3	90.00	3,274.7	63.4	164.9	34.4	130.52	1.264	Level 3
10,500.0	7,099.2	10,497.2	7,099.2	67.1	67.1	90.00	3,374.7	63.8	164.9	30.7	134.24	1.228	Level 2
10,600.0	7,098.7	10,597.2	7,098.7	69.0	69.0	90.00	3,474.7	64.2	164.9	26.9	137.98	1.195	Level 2
10,700.0	7,098.3	10,697.2	7,098.3	70.9	70.9	90.00	3,574.7	64.6	164.9	23.2	141.71	1.164	Level 2
10,800.0	7,097.8	10,797.2	7,097.8	72.7	72.7	90.00	3,674.7	65.1	164.9	19.5	145.45	1.134	Level 2
10,900.0	7,097.3	10,897.2	7,097.3	74.6	74.6	90.00	3,774.7	65.5	164.9	15.7	149.20	1.105	Level 2
11,000.0	7,096.8	10,997.2	7,096.8	76.5	76.5	90.00	3,874.7	65.9	164.9	12.0	152.95	1.078	Level 2
11,100.0	7,096.4	11,097.2	7,096.4	78.4	78.4	90.00	3,974.7	66.3	164.9	8.2	156.70	1.052	Level 2
11,200.0	7,095.9	11,197.2	7,095.9	80.2	80.2	90.00	4,074.7	66.7	164.9	4.5	160.46	1.028	Level 2
11,300.0	7,095.4	11,297.2	7,095.4	82.1	82.1	90.00	4,174.7	67.2	164.9	0.7	164.22	1.004	Level 2
11,400.0	7,095.0	11,397.2	7,095.0	84.0	84.0	90.00	4,274.7	67.6	164.9	-3.1	167.99	0.982	Level 1
11,500.0	7,094.5	11,497.2	7,094.5	85.9	85.9	90.00	4,374.7	68.0	164.9	-6.8	171.75	0.960	Level 1
11,600.0	7,094.0	11,597.2	7,094.0	87.8	87.8	90.00	4,474.7	68.4	164.9	-10.6	175.52	0.940	Level 1
11,700.0	7,093.5	11,697.2	7,093.5	89.6	89.7	90.00	4,574.7	68.8	164.9	-14.4	179.29	0.920	Level 1
11,709.2	7,093.5	11,706.4	7,093.5	89.8	89.8	90.00	4,583.9	68.9	164.9	-14.7	179.64	0.918	Level 1, ES, SF

Company:	Verdad Oil & Gas Corporation	Local Co-ordinate Reference:	Well Meehl 01N-65W-24-3N
Project:	SEC.24-T1N-R65W	TVD Reference:	WELL @ 5038.5ft (RKB - 16.5')
Reference Site:	Meehl 01N-65W-24 Pad Sec.24-T01N-R65W	MD Reference:	WELL @ 5038.5ft (RKB - 16.5')
Site Error:	0.0ft	North Reference:	True
Reference Well:	Meehl 01N-65W-24-3N	Survey Calculation Method:	Minimum Curvature
Well Error:	0.0ft	Output errors are at	2.00 sigma
Reference Wellbore	Wellbore #1	Database:	landmark
Reference Design:	Plan #1 (10-17-14)	Offset TVD Reference:	Offset Datum

Offset Design													Offset Site Error:	0.0 ft
Survey Program: 0-MWD													Offset Well Error:	0.0 ft
Reference		Offset		Semi Major Axis			Distance							Warning
Measured Depth (ft)	Vertical Depth (ft)	Measured Depth (ft)	Vertical Depth (ft)	Reference (ft)	Offset (ft)	Highside Toolface (°)	Offset Wellbore Centre +N/-S (ft)	+E/-W (ft)	Between Centres (ft)	Between Ellipses (ft)	Minimum Separation (ft)	Separation Factor		
0.0	0.0	0.0	0.0	0.0	0.0	89.34	0.3	30.2	30.2					
100.0	100.0	100.0	100.0	0.1	0.1	89.34	0.3	30.2	30.2	30.0	0.22	134.568		
200.0	200.0	200.0	200.0	0.3	0.3	89.34	0.3	30.2	30.2	29.6	0.67	44.856		
300.0	300.0	300.0	300.0	0.6	0.6	89.34	0.3	30.2	30.2	29.1	1.12	26.914		
400.0	400.0	400.0	400.0	0.8	0.8	89.34	0.3	30.2	30.2	28.7	1.57	19.224		
500.0	500.0	500.0	500.0	1.0	1.0	89.34	0.3	30.2	30.2	28.2	2.02	14.952		
600.0	600.0	600.0	600.0	1.2	1.2	89.34	0.3	30.2	30.2	27.8	2.47	12.233		
700.0	700.0	700.0	700.0	1.5	1.5	89.34	0.3	30.2	30.2	27.3	2.92	10.351		
800.0	800.0	800.0	800.0	1.7	1.7	89.34	0.3	30.2	30.2	26.9	3.37	8.971		
900.0	900.0	900.0	900.0	1.9	1.9	89.34	0.3	30.2	30.2	26.4	3.82	7.916		
1,000.0	1,000.0	1,000.0	1,000.0	2.1	2.1	89.34	0.3	30.2	30.2	26.0	4.27	7.083		
1,100.0	1,100.0	1,100.0	1,100.0	2.4	2.4	89.34	0.3	30.2	30.2	25.5	4.72	6.408		
1,200.0	1,200.0	1,200.0	1,200.0	2.6	2.6	89.34	0.3	30.2	30.2	25.1	5.17	5.851		
1,300.0	1,300.0	1,300.0	1,300.0	2.8	2.8	89.34	0.3	30.2	30.2	24.6	5.62	5.383		
1,400.0	1,400.0	1,400.0	1,400.0	3.0	3.0	89.34	0.3	30.2	30.2	24.2	6.07	4.984		
1,500.0	1,500.0	1,500.0	1,500.0	3.3	3.3	89.34	0.3	30.2	30.2	23.7	6.52	4.640		
1,600.0	1,600.0	1,600.0	1,600.0	3.5	3.5	89.34	0.3	30.2	30.2	23.3	6.97	4.341 CC, ES		
1,700.0	1,700.0	1,700.0	1,700.0	3.7	3.7	-121.29	0.3	30.2	31.1	23.7	7.39	4.211		
1,800.0	1,799.8	1,799.8	1,799.8	3.9	3.9	-128.76	0.3	30.2	34.1	26.3	7.78	4.386		
1,900.0	1,899.5	1,899.5	1,899.5	4.0	4.2	-138.41	0.3	30.2	40.2	32.0	8.17	4.914		
2,000.0	1,998.8	1,998.8	1,998.8	4.2	4.4	-147.35	0.3	30.2	49.5	41.0	8.57	5.778		
2,100.0	2,098.0	2,097.9	2,097.8	4.5	4.6	-151.94	-0.9	31.3	60.2	51.2	8.96	6.715		
2,200.0	2,197.3	2,197.0	2,196.9	4.7	4.8	-152.37	-4.9	34.6	71.3	62.0	9.34	7.636		
2,300.0	2,296.6	2,296.1	2,295.5	4.9	4.9	-150.31	-11.4	40.0	82.8	73.0	9.73	8.505		
2,400.0	2,395.9	2,394.9	2,393.6	5.2	5.1	-146.79	-20.4	47.5	94.9	84.7	10.15	9.346		
2,500.0	2,495.1	2,493.9	2,491.9	5.4	5.4	-143.63	-30.1	55.6	107.5	96.9	10.60	10.143		
2,600.0	2,594.4	2,593.0	2,590.1	5.7	5.6	-141.13	-39.8	63.7	120.3	109.3	11.06	10.884		
2,700.0	2,693.7	2,692.0	2,688.4	6.0	5.8	-139.12	-49.5	71.7	133.4	121.8	11.53	11.566		
2,800.0	2,793.0	2,791.1	2,786.6	6.2	6.1	-137.46	-59.1	79.8	146.5	134.5	12.02	12.193		
2,900.0	2,892.2	2,890.1	2,884.9	6.5	6.3	-136.08	-68.8	87.9	159.8	147.3	12.51	12.767		
3,000.0	2,991.5	2,989.2	2,983.1	6.8	6.6	-134.92	-78.5	95.9	173.1	160.1	13.02	13.294		
3,100.0	3,090.8	3,088.2	3,081.3	7.1	6.8	-133.91	-88.2	104.0	186.5	173.0	13.54	13.777		
3,200.0	3,190.0	3,187.3	3,179.6	7.4	7.1	-133.05	-97.9	112.1	199.9	185.9	14.06	14.220		
3,300.0	3,289.3	3,286.3	3,277.8	7.7	7.4	-132.29	-107.6	120.1	213.4	198.8	14.59	14.628		
3,400.0	3,388.6	3,385.4	3,376.1	8.0	7.7	-131.62	-117.3	128.2	226.9	211.8	15.13	15.003		
3,500.0	3,487.9	3,484.4	3,474.3	8.3	7.9	-131.03	-126.9	136.3	240.5	224.8	15.67	15.349		
3,600.0	3,587.1	3,583.5	3,572.6	8.6	8.2	-130.50	-136.6	144.3	254.1	237.8	16.22	15.668		
3,700.0	3,686.4	3,682.5	3,670.8	8.9	8.5	-130.06	-146.3	152.4	267.5	250.8	16.77	15.957		
3,800.0	3,786.0	3,781.7	3,769.2	9.1	8.8	-129.36	-156.0	160.5	279.3	262.1	17.29	16.156		
3,900.0	3,885.8	3,881.0	3,867.7	9.3	9.1	-128.17	-165.7	168.6	289.1	271.3	17.80	16.242		
4,000.0	3,985.8	3,980.3	3,966.2	9.5	9.4	-126.49	-175.4	176.6	296.9	278.6	18.28	16.238		
4,100.0	4,085.8	4,079.5	4,064.6	9.7	9.7	83.35	-185.1	184.7	303.7	284.9	18.75	16.193		
4,200.0	4,185.8	4,178.7	4,162.9	9.9	10.0	85.30	-194.8	192.8	310.9	291.7	19.22	16.175		
4,300.0	4,285.8	4,279.7	4,263.2	10.0	10.3	87.18	-204.6	200.9	318.3	298.6	19.68	16.175		
4,400.0	4,385.8	4,386.6	4,369.5	10.2	10.6	88.68	-212.7	207.7	324.4	304.3	20.11	16.133		
4,500.0	4,485.8	4,494.1	4,476.8	10.4	10.8	89.58	-217.8	211.9	328.3	307.8	20.52	15.998		
4,600.0	4,585.8	4,602.0	4,584.7	10.6	11.0	89.93	-219.8	213.6	329.8	308.9	20.92	15.766		
4,700.0	4,685.8	4,703.1	4,685.8	10.8	11.2	89.94	-219.9	213.6	329.8	308.5	21.30	15.483		
4,800.0	4,785.8	4,803.1	4,785.8	11.0	11.4	89.94	-219.9	213.6	329.8	308.2	21.69	15.207		
4,900.0	4,885.8	4,903.1	4,885.8	11.2	11.6	89.94	-219.9	213.6	329.8	307.8	22.08	14.940		
5,000.0	4,985.8	5,003.1	4,985.8	11.4	11.8	89.94	-219.9	213.6	329.8	307.4	22.47	14.680		
5,100.0	5,085.8	5,103.1	5,085.8	11.6	12.0	89.94	-219.9	213.6	329.8	307.0	22.86	14.428		

CC - Min centre to center distance or convergent point, SF - min separation factor, ES - min ellipse separation

Company:	Verdad Oil & Gas Corporation	Local Co-ordinate Reference:	Well Meehl 01N-65W-24-3N
Project:	SEC.24-T1N-R65W	TVD Reference:	WELL @ 5038.5ft (RKB - 16.5')
Reference Site:	Meehl 01N-65W-24 Pad Sec.24-T01N-R65W	MD Reference:	WELL @ 5038.5ft (RKB - 16.5')
Site Error:	0.0ft	North Reference:	True
Reference Well:	Meehl 01N-65W-24-3N	Survey Calculation Method:	Minimum Curvature
Well Error:	0.0ft	Output errors are at	2.00 sigma
Reference Wellbore	Wellbore #1	Database:	landmark
Reference Design:	Plan #1 (10-17-14)	Offset TVD Reference:	Offset Datum

Offset Design												Offset Site Error:	0.0 ft
Survey Program: 0-MWD												Offset Well Error:	0.0 ft
Reference		Offset		Semi Major Axis			Distance						
Measured Depth (ft)	Vertical Depth (ft)	Measured Depth (ft)	Vertical Depth (ft)	Reference (ft)	Offset (ft)	Highside Toolface (°)	Offset Wellbore Centre +N/-S (ft)	+E/-W (ft)	Between Centres (ft)	Between Ellipses (ft)	Minimum Separation (ft)	Separation Factor	Warning
5,200.0	5,185.8	5,203.1	5,185.8	11.8	12.1	89.94	-219.9	213.6	329.8	306.6	23.26	14.183	
5,300.0	5,285.8	5,303.1	5,285.8	12.0	12.3	89.94	-219.9	213.6	329.8	306.2	23.65	13.945	
5,400.0	5,385.8	5,403.1	5,385.8	12.2	12.5	89.94	-219.9	213.6	329.8	305.8	24.05	13.714	
5,500.0	5,485.8	5,503.1	5,485.8	12.4	12.7	89.94	-219.9	213.6	329.8	305.4	24.45	13.489	
5,600.0	5,585.8	5,603.1	5,585.8	12.6	12.9	89.94	-219.9	213.6	329.8	305.0	24.86	13.271	
5,700.0	5,685.8	5,703.1	5,685.8	12.8	13.1	89.94	-219.9	213.6	329.8	304.6	25.26	13.059	
5,800.0	5,785.8	5,803.1	5,785.8	13.0	13.3	89.94	-219.9	213.6	329.8	304.2	25.66	12.852	
5,900.0	5,885.8	5,903.1	5,885.8	13.2	13.5	89.94	-219.9	213.6	329.8	303.8	26.07	12.652	
6,000.0	5,985.8	6,003.1	5,985.8	13.4	13.7	89.94	-219.9	213.6	329.8	303.4	26.48	12.457	
6,100.0	6,085.8	6,103.1	6,085.8	13.6	13.9	89.94	-219.9	213.6	329.8	303.0	26.89	12.267	
6,200.0	6,185.8	6,203.1	6,185.8	13.8	14.1	89.94	-219.9	213.6	329.8	302.5	27.30	12.083	
6,300.0	6,285.8	6,303.1	6,285.8	14.0	14.3	89.94	-219.9	213.6	329.8	302.1	27.71	11.903	
6,400.0	6,385.8	6,403.1	6,385.8	14.2	14.5	89.94	-219.9	213.6	329.8	301.7	28.12	11.728	
6,500.0	6,485.8	6,503.1	6,485.8	14.4	14.7	89.94	-219.9	213.6	329.8	301.3	28.54	11.558	
6,600.0	6,585.8	6,603.1	6,585.8	14.6	14.9	89.94	-219.9	213.6	329.8	300.9	28.95	11.392	
6,644.1	6,629.8	6,647.1	6,629.8	14.7	15.0	90.00	-219.9	213.6	329.8	300.7	29.12	11.328	
6,700.0	6,685.3	6,702.6	6,685.3	14.8	15.1	91.12	-219.9	213.6	329.9	300.6	29.32	11.252	
6,800.0	6,781.4	6,798.7	6,781.4	14.9	15.3	95.43	-219.9	213.6	331.5	302.0	29.57	11.213	
6,900.0	6,870.6	6,900.8	6,883.0	14.9	15.5	101.38	-211.9	213.7	337.5	307.9	29.63	11.391	
7,000.0	6,949.6	7,013.3	6,990.9	15.0	15.6	107.10	-180.6	213.8	347.2	317.8	29.43	11.799	
7,100.0	7,015.4	7,137.6	7,099.1	15.0	15.7	112.27	-120.1	214.1	359.2	330.2	29.01	12.383	
7,200.0	7,065.8	7,274.9	7,198.3	15.2	15.7	116.58	-25.7	214.5	371.1	342.6	28.58	12.985	
7,300.0	7,098.7	7,425.1	7,274.4	15.7	15.8	119.66	103.1	215.0	380.6	352.1	28.57	13.323	
7,400.0	7,113.1	7,584.4	7,311.6	16.3	16.7	121.12	257.4	215.7	385.4	356.0	29.42	13.099	
7,500.0	7,113.3	7,701.8	7,313.2	17.2	17.6	121.21	374.8	216.2	385.7	354.8	30.86	12.497	
7,600.0	7,112.9	7,801.8	7,312.8	18.1	18.6	121.22	474.8	216.6	385.8	353.2	32.52	11.862	
7,700.0	7,112.4	7,901.8	7,312.5	19.2	19.7	121.24	574.8	217.0	385.8	351.4	34.43	11.207	
7,800.0	7,111.9	8,001.8	7,312.1	20.5	20.9	121.26	674.8	217.4	385.9	349.4	36.54	10.560	
7,900.0	7,111.5	8,101.8	7,311.8	21.8	22.2	121.27	774.8	217.9	386.0	347.1	38.83	9.939	
8,000.0	7,111.0	8,201.8	7,311.4	23.2	23.6	121.29	874.8	218.3	386.0	344.8	41.27	9.354	
8,100.0	7,110.5	8,301.8	7,311.1	24.7	25.0	121.30	974.8	218.7	386.1	342.3	43.83	8.810	
8,200.0	7,110.0	8,401.8	7,310.7	26.2	26.6	121.32	1,074.8	219.2	386.2	339.7	46.48	8.308	
8,300.0	7,109.6	8,501.8	7,310.4	27.8	28.1	121.33	1,174.8	219.6	386.2	337.0	49.22	7.846	
8,400.0	7,109.1	8,601.8	7,310.0	29.4	29.7	121.35	1,274.8	220.0	386.3	334.3	52.04	7.424	
8,500.0	7,108.6	8,701.8	7,309.7	31.1	31.4	121.36	1,374.8	220.4	386.4	331.5	54.91	7.037	
8,600.0	7,108.2	8,801.8	7,309.4	32.8	33.0	121.38	1,474.8	220.9	386.4	328.6	57.83	6.682	
8,700.0	7,107.7	8,901.8	7,309.0	34.5	34.7	121.39	1,574.8	221.3	386.5	325.7	60.80	6.357	
8,800.0	7,107.2	9,001.8	7,308.7	36.2	36.4	121.41	1,674.7	221.7	386.6	322.8	63.80	6.059	
8,900.0	7,106.7	9,101.8	7,308.3	37.9	38.2	121.42	1,774.7	222.1	386.7	319.8	66.84	5.785	
9,000.0	7,106.3	9,201.8	7,308.0	39.7	39.9	121.44	1,874.7	222.6	386.7	316.8	69.90	5.533	
9,100.0	7,105.8	9,301.8	7,307.6	41.5	41.7	121.45	1,974.7	223.0	386.8	313.8	72.98	5.300	
9,200.0	7,105.3	9,401.8	7,307.3	43.3	43.5	121.47	2,074.7	223.4	386.9	310.8	76.09	5.084	
9,300.0	7,104.9	9,501.8	7,306.9	45.1	45.2	121.48	2,174.7	223.8	386.9	307.7	79.22	4.884	
9,400.0	7,104.4	9,601.8	7,306.6	46.9	47.0	121.50	2,274.7	224.3	387.0	304.6	82.36	4.699	
9,500.0	7,103.9	9,701.8	7,306.2	48.7	48.8	121.51	2,374.7	224.7	387.1	301.5	85.52	4.526	
9,600.0	7,103.4	9,801.8	7,305.9	50.5	50.7	121.53	2,474.7	225.1	387.1	298.4	88.69	4.365	
9,700.0	7,103.0	9,901.8	7,305.5	52.3	52.5	121.54	2,574.7	225.5	387.2	295.3	91.87	4.215	
9,800.0	7,102.5	10,001.8	7,305.2	54.2	54.3	121.56	2,674.7	226.0	387.3	292.2	95.06	4.074	
9,900.0	7,102.0	10,101.8	7,304.8	56.0	56.1	121.57	2,774.7	226.4	387.3	289.1	98.26	3.942	
10,000.0	7,101.6	10,201.8	7,304.5	57.8	58.0	121.59	2,874.7	226.8	387.4	285.9	101.47	3.818	
10,100.0	7,101.1	10,301.8	7,304.1	59.7	59.8	121.60	2,974.7	227.2	387.5	282.8	104.68	3.702	
10,200.0	7,100.6	10,401.8	7,303.8	61.5	61.7	121.62	3,074.7	227.7	387.5	279.6	107.90	3.592	

CC - Min centre to center distance or convergent point, SF - min separation factor, ES - min ellipse separation

Company:	Verdad Oil & Gas Corporation	Local Co-ordinate Reference:	Well Meehl 01N-65W-24-3N
Project:	SEC.24-T1N-R65W	TVD Reference:	WELL @ 5038.5ft (RKB - 16.5')
Reference Site:	Meehl 01N-65W-24 Pad Sec.24-T01N-R65W	MD Reference:	WELL @ 5038.5ft (RKB - 16.5')
Site Error:	0.0ft	North Reference:	True
Reference Well:	Meehl 01N-65W-24-3N	Survey Calculation Method:	Minimum Curvature
Well Error:	0.0ft	Output errors are at	2.00 sigma
Reference Wellbore	Wellbore #1	Database:	landmark
Reference Design:	Plan #1 (10-17-14)	Offset TVD Reference:	Offset Datum

Offset Design Meehl 01N-65W-24 Pad Sec.24-T01N-R65W - Meehl 01N-65W-24-5C - Wellbore #1 - Plan #1 (10-17-1												Offset Site Error:	0.0 ft
Survey Program: 0-MWD												Offset Well Error:	0.0 ft
Reference		Offset		Semi Major Axis			Distance						
Measured Depth (ft)	Vertical Depth (ft)	Measured Depth (ft)	Vertical Depth (ft)	Reference (ft)	Offset (ft)	Highside Toolface (°)	Offset Wellbore Centre +N/-S (ft)	+E/-W (ft)	Between Centres (ft)	Between Ellipses (ft)	Minimum Separation (ft)	Separation Factor	Warning
10,300.0	7,100.1	10,501.8	7,303.4	63.4	63.5	121.63	3,174.7	228.1	387.6	276.5	111.13	3.488	
10,400.0	7,099.7	10,601.8	7,303.1	65.3	65.4	121.64	3,274.7	228.5	387.7	273.3	114.36	3.390	
10,500.0	7,099.2	10,701.8	7,302.7	67.1	67.2	121.66	3,374.7	228.9	387.8	270.2	117.60	3.297	
10,600.0	7,098.7	10,801.8	7,302.4	69.0	69.1	121.67	3,474.7	229.4	387.8	267.0	120.84	3.209	
10,700.0	7,098.3	10,901.8	7,302.0	70.9	71.0	121.69	3,574.7	229.8	387.9	263.8	124.09	3.126	
10,800.0	7,097.8	11,001.8	7,301.7	72.7	72.8	121.70	3,674.7	230.2	388.0	260.6	127.34	3.047	
10,900.0	7,097.3	11,101.8	7,301.3	74.6	74.7	121.72	3,774.7	230.6	388.0	257.4	130.59	2.971	
11,000.0	7,096.8	11,201.8	7,301.0	76.5	76.6	121.73	3,874.7	231.1	388.1	254.3	133.84	2.900	
11,100.0	7,096.4	11,301.8	7,300.6	78.4	78.4	121.75	3,974.7	231.5	388.2	251.1	137.10	2.831	
11,200.0	7,095.9	11,401.8	7,300.3	80.2	80.3	121.76	4,074.7	231.9	388.2	247.9	140.36	2.766	
11,300.0	7,095.4	11,501.8	7,299.9	82.1	82.2	121.78	4,174.7	232.3	388.3	244.7	143.62	2.704	
11,400.0	7,095.0	11,601.8	7,299.6	84.0	84.1	121.79	4,274.7	232.8	388.4	241.5	146.89	2.644	
11,500.0	7,094.5	11,701.8	7,299.2	85.9	86.0	121.81	4,374.7	233.2	388.4	238.3	150.16	2.587	
11,600.0	7,094.0	11,801.8	7,298.9	87.8	87.8	121.82	4,474.7	233.6	388.5	235.1	153.42	2.532	
11,700.0	7,093.5	11,901.8	7,298.5	89.6	89.7	121.84	4,574.7	234.0	388.6	231.9	156.69	2.480	
11,709.2	7,093.5	11,910.2	7,298.5	89.8	89.8	121.84	4,583.1	234.1	388.6	231.6	156.95	2.476 SF	

Company:	Verdad Oil & Gas Corporation	Local Co-ordinate Reference:	Well Meehl 01N-65W-24-3N
Project:	SEC.24-T1N-R65W	TVD Reference:	WELL @ 5038.5ft (RKB - 16.5')
Reference Site:	Meehl 01N-65W-24 Pad Sec.24-T01N-R65W	MD Reference:	WELL @ 5038.5ft (RKB - 16.5')
Site Error:	0.0ft	North Reference:	True
Reference Well:	Meehl 01N-65W-24-3N	Survey Calculation Method:	Minimum Curvature
Well Error:	0.0ft	Output errors are at	2.00 sigma
Reference Wellbore	Wellbore #1	Database:	landmark
Reference Design:	Plan #1 (10-17-14)	Offset TVD Reference:	Offset Datum

Offset Design													Offset Site Error:	0.0ft
Survey Program: 0-MWD													Offset Well Error:	0.0ft
Reference		Offset		Semi Major Axis			Distance							Warning
Measured Depth (ft)	Vertical Depth (ft)	Measured Depth (ft)	Vertical Depth (ft)	Reference (ft)	Offset (ft)	Highside Toolface (°)	Offset Wellbore Centre +N/-S (ft)	+E/-W (ft)	Between Centres (ft)	Between Ellipses (ft)	Minimum Separation (ft)	Separation Factor		
0.0	0.0	0.0	0.0	0.0	0.0	89.62	0.3	45.1	45.1					
100.0	100.0	100.0	100.0	0.1	0.1	89.62	0.3	45.1	45.1	44.9	0.22	200.597		
200.0	200.0	200.0	200.0	0.3	0.3	89.62	0.3	45.1	45.1	44.4	0.67	66.866		
300.0	300.0	300.0	300.0	0.6	0.6	89.62	0.3	45.1	45.1	44.0	1.12	40.119		
400.0	400.0	400.0	400.0	0.8	0.8	89.62	0.3	45.1	45.1	43.5	1.57	28.657		
500.0	500.0	500.0	500.0	1.0	1.0	89.62	0.3	45.1	45.1	43.1	2.02	22.289		
600.0	600.0	600.0	600.0	1.2	1.2	89.62	0.3	45.1	45.1	42.6	2.47	18.236		
700.0	700.0	700.0	700.0	1.5	1.5	89.62	0.3	45.1	45.1	42.2	2.92	15.431		
800.0	800.0	800.0	800.0	1.7	1.7	89.62	0.3	45.1	45.1	41.7	3.37	13.373		
900.0	900.0	900.0	900.0	1.9	1.9	89.62	0.3	45.1	45.1	41.3	3.82	11.800		
1,000.0	1,000.0	1,000.0	1,000.0	2.1	2.1	89.62	0.3	45.1	45.1	40.8	4.27	10.558		
1,100.0	1,100.0	1,100.0	1,100.0	2.4	2.4	89.62	0.3	45.1	45.1	40.4	4.72	9.552		
1,200.0	1,200.0	1,200.0	1,200.0	2.6	2.6	89.62	0.3	45.1	45.1	39.9	5.17	8.722		
1,300.0	1,300.0	1,300.0	1,300.0	2.8	2.8	89.62	0.3	45.1	45.1	39.5	5.62	8.024		
1,400.0	1,400.0	1,400.0	1,400.0	3.0	3.0	89.62	0.3	45.1	45.1	39.0	6.07	7.430 CC, ES		
1,500.0	1,500.0	1,498.7	1,498.6	3.3	3.2	90.78	-0.6	46.5	46.5	40.0	6.49	7.165		
1,600.0	1,600.0	1,597.1	1,596.9	3.5	3.4	93.86	-3.4	50.7	51.0	44.1	6.90	7.382		
1,700.0	1,700.0	1,695.1	1,694.6	3.7	3.6	-111.30	-8.0	57.8	59.2	51.9	7.29	8.121		
1,800.0	1,799.8	1,792.3	1,791.1	3.9	3.8	-110.64	-14.4	67.5	71.8	64.1	7.66	9.370		
1,900.0	1,899.5	1,890.7	1,888.5	4.0	4.1	-111.58	-22.1	79.1	87.5	79.5	8.05	10.876		
2,000.0	1,998.8	1,989.2	1,986.0	4.2	4.3	-113.81	-29.8	90.8	104.5	96.0	8.45	12.359		
2,100.0	2,098.0	2,087.6	2,083.4	4.5	4.6	-115.67	-37.4	102.4	121.7	112.8	8.88	13.703		
2,200.0	2,197.3	2,186.0	2,180.8	4.7	4.9	-117.07	-45.1	114.1	139.0	129.7	9.33	14.903		
2,300.0	2,296.6	2,284.5	2,278.3	4.9	5.1	-118.16	-52.8	125.7	156.4	146.6	9.79	15.973		
2,400.0	2,395.9	2,382.9	2,375.7	5.2	5.4	-119.03	-60.5	137.4	173.9	163.6	10.27	16.929		
2,500.0	2,495.1	2,481.3	2,473.2	5.4	5.7	-119.75	-68.1	149.0	191.3	180.6	10.76	17.783		
2,600.0	2,594.4	2,579.8	2,570.6	5.7	6.0	-120.34	-75.8	160.7	208.8	197.6	11.26	18.548		
2,700.0	2,693.7	2,678.2	2,668.1	6.0	6.3	-120.84	-83.5	172.3	226.4	214.6	11.77	19.234		
2,800.0	2,793.0	2,776.6	2,765.5	6.2	6.7	-121.27	-91.1	183.9	243.9	231.6	12.28	19.853		
2,900.0	2,892.2	2,875.1	2,862.9	6.5	7.0	-121.64	-98.8	195.6	261.4	248.6	12.81	20.412		
3,000.0	2,991.5	2,973.5	2,960.4	6.8	7.3	-121.97	-106.5	207.2	279.0	265.6	13.34	20.918		
3,100.0	3,090.8	3,072.0	3,057.8	7.1	7.6	-122.26	-114.2	218.9	296.5	282.7	13.87	21.377		
3,200.0	3,190.0	3,170.4	3,155.3	7.4	7.9	-122.51	-121.8	230.5	314.1	299.7	14.41	21.796		
3,300.0	3,289.3	3,268.8	3,252.7	7.7	8.3	-122.74	-129.5	242.2	331.7	316.7	14.95	22.179		
3,400.0	3,388.6	3,367.3	3,350.2	8.0	8.6	-122.94	-137.2	253.8	349.2	333.7	15.50	22.530		
3,500.0	3,487.9	3,465.7	3,447.6	8.3	8.9	-123.13	-144.8	265.5	366.8	350.8	16.05	22.852		
3,600.0	3,587.1	3,564.1	3,545.0	8.6	9.3	-123.30	-152.5	277.1	384.4	367.8	16.61	23.149		
3,700.0	3,686.4	3,662.6	3,642.5	8.9	9.6	-123.52	-160.2	288.8	401.9	384.7	17.16	23.416		
3,800.0	3,786.0	3,761.3	3,740.2	9.1	9.9	-123.61	-167.9	300.5	417.9	400.2	17.69	23.627		
3,900.0	3,885.8	3,860.2	3,838.1	9.3	10.3	-123.28	-175.6	312.2	432.1	413.9	18.19	23.756		
4,000.0	3,985.8	3,959.2	3,936.1	9.5	10.6	-122.58	-183.3	323.9	444.4	425.8	18.66	23.818		
4,100.0	4,085.8	4,058.2	4,034.1	9.7	10.9	86.30	-191.0	335.6	455.7	436.6	19.11	23.845		
4,200.0	4,185.8	4,157.2	4,132.1	9.9	11.3	87.35	-198.7	347.3	467.1	447.6	19.55	23.889		
4,300.0	4,285.8	4,261.9	4,235.8	10.0	11.6	88.38	-206.7	359.5	478.5	458.5	20.00	23.928		
4,400.0	4,385.8	4,377.4	4,350.7	10.2	11.9	89.21	-213.5	369.8	487.3	466.9	20.42	23.866		
4,500.0	4,485.8	4,493.7	4,466.7	10.4	12.1	89.72	-217.8	376.3	492.9	472.0	20.82	23.668		
4,600.0	4,585.8	4,610.5	4,583.4	10.6	12.3	89.92	-219.5	378.8	495.1	473.8	21.22	23.327		
4,700.0	4,685.8	4,712.9	4,685.8	10.8	12.5	89.92	-219.5	378.9	495.1	473.5	21.60	22.918		
4,800.0	4,785.8	4,812.9	4,785.8	11.0	12.7	89.92	-219.5	378.9	495.1	473.1	21.98	22.524		
4,900.0	4,885.8	4,912.9	4,885.8	11.2	12.8	89.92	-219.5	378.9	495.1	472.7	22.36	22.140		
5,000.0	4,985.8	5,012.9	4,985.8	11.4	13.0	89.92	-219.5	378.9	495.1	472.3	22.74	21.767		
5,100.0	5,085.8	5,112.9	5,085.8	11.6	13.2	89.92	-219.5	378.9	495.1	472.0	23.13	21.404		

CC - Min centre to center distance or convergent point, SF - min separation factor, ES - min ellipse separation

Company:	Verdad Oil & Gas Corporation	Local Co-ordinate Reference:	Well Meehl 01N-65W-24-3N
Project:	SEC.24-T1N-R65W	TVD Reference:	WELL @ 5038.5ft (RKB - 16.5')
Reference Site:	Meehl 01N-65W-24 Pad Sec.24-T01N-R65W	MD Reference:	WELL @ 5038.5ft (RKB - 16.5')
Site Error:	0.0ft	North Reference:	True
Reference Well:	Meehl 01N-65W-24-3N	Survey Calculation Method:	Minimum Curvature
Well Error:	0.0ft	Output errors are at	2.00 sigma
Reference Wellbore	Wellbore #1	Database:	landmark
Reference Design:	Plan #1 (10-17-14)	Offset TVD Reference:	Offset Datum

Offset Design												Offset Site Error:	0.0 ft
Survey Program: 0-MWD												Offset Well Error:	0.0 ft
Reference		Offset		Semi Major Axis			Distance						
Measured Depth (ft)	Vertical Depth (ft)	Measured Depth (ft)	Vertical Depth (ft)	Reference (ft)	Offset (ft)	Highside Toolface (°)	Offset Wellbore Centre +N/-S (ft)	+E/-W (ft)	Between Centres (ft)	Between Ellipses (ft)	Minimum Separation (ft)	Separation Factor	Warning
5,200.0	5,185.8	5,212.9	5,185.8	11.8	13.4	89.92	-219.5	378.9	495.1	471.6	23.52	21.051	
5,300.0	5,285.8	5,312.9	5,285.8	12.0	13.5	89.92	-219.5	378.9	495.1	471.2	23.91	20.708	
5,400.0	5,385.8	5,412.9	5,385.8	12.2	13.7	89.92	-219.5	378.9	495.1	470.8	24.30	20.374	
5,500.0	5,485.8	5,512.9	5,485.8	12.4	13.9	89.92	-219.5	378.9	495.1	470.4	24.69	20.048	
5,600.0	5,585.8	5,612.9	5,585.8	12.6	14.1	89.92	-219.5	378.9	495.1	470.0	25.09	19.732	
5,700.0	5,685.8	5,712.9	5,685.8	12.8	14.2	89.92	-219.5	378.9	495.1	469.6	25.49	19.424	
5,800.0	5,785.8	5,812.9	5,785.8	13.0	14.4	89.92	-219.5	378.9	495.1	469.2	25.89	19.124	
5,900.0	5,885.8	5,912.9	5,885.8	13.2	14.6	89.92	-219.5	378.9	495.1	468.8	26.29	18.833	
6,000.0	5,985.8	6,012.9	5,985.8	13.4	14.8	89.92	-219.5	378.9	495.1	468.4	26.69	18.549	
6,100.0	6,085.8	6,112.9	6,085.8	13.6	15.0	89.92	-219.5	378.9	495.1	468.0	27.10	18.272	
6,200.0	6,185.8	6,212.9	6,185.8	13.8	15.2	89.92	-219.5	378.9	495.1	467.6	27.50	18.003	
6,300.0	6,285.8	6,312.9	6,285.8	14.0	15.3	89.92	-219.5	378.9	495.1	467.2	27.91	17.740	
6,400.0	6,385.8	6,412.9	6,385.8	14.2	15.5	89.92	-219.5	378.9	495.1	466.8	28.32	17.485	
6,500.0	6,485.8	6,512.9	6,485.8	14.4	15.7	89.92	-219.5	378.9	495.1	466.4	28.72	17.236	
6,600.0	6,585.8	6,612.9	6,585.8	14.6	15.9	89.92	-219.5	378.9	495.1	466.0	29.14	16.993	
6,700.0	6,685.3	6,712.4	6,684.8	14.8	16.1	89.68	-211.3	378.9	495.1	465.6	29.47	16.801	
6,800.0	6,781.4	6,811.9	6,780.5	14.9	16.2	89.70	-184.5	379.0	495.1	465.4	29.66	16.693	
6,900.0	6,870.6	6,911.4	6,869.3	14.9	16.2	89.73	-140.0	379.2	495.1	465.3	29.77	16.633	
7,000.0	6,949.6	7,011.0	6,948.2	15.0	16.2	89.76	-79.4	379.5	495.1	465.2	29.89	16.561	
7,100.0	7,015.4	7,110.6	7,014.1	15.0	16.3	89.81	-4.9	379.8	495.1	464.9	30.17	16.410	
7,200.0	7,065.8	7,210.4	7,064.7	15.2	16.3	89.86	80.9	380.1	495.1	464.4	30.71	16.123	
7,300.0	7,098.7	7,310.2	7,098.0	15.7	16.4	89.92	174.8	380.5	495.1	463.5	31.59	15.673	
7,400.0	7,113.1	7,410.1	7,112.9	16.3	16.9	89.98	273.4	381.0	495.1	462.2	32.83	15.080	
7,500.0	7,113.3	7,510.1	7,113.3	17.2	17.7	90.00	373.4	381.4	495.1	460.7	34.42	14.382	
7,600.0	7,112.9	7,610.1	7,112.9	18.1	18.6	90.00	473.4	381.8	495.1	458.7	36.34	13.623	
7,700.0	7,112.4	7,710.1	7,112.4	19.2	19.7	90.00	573.4	382.2	495.1	456.5	38.55	12.843	
7,800.0	7,111.9	7,810.1	7,111.9	20.5	20.9	90.00	673.4	382.6	495.1	454.1	40.99	12.077	
7,900.0	7,111.5	7,910.1	7,111.4	21.8	22.2	90.00	773.4	383.0	495.1	451.4	43.64	11.345	
8,000.0	7,111.0	8,010.1	7,111.0	23.2	23.6	90.00	873.4	383.5	495.1	448.6	46.45	10.659	
8,100.0	7,110.5	8,110.1	7,110.5	24.7	25.1	90.00	973.4	383.9	495.1	445.7	49.39	10.023	
8,200.0	7,110.0	8,210.1	7,110.0	26.2	26.6	90.00	1,073.4	384.3	495.1	442.6	52.45	9.438	
8,300.0	7,109.6	8,310.1	7,109.6	27.8	28.2	90.00	1,173.4	384.7	495.1	439.5	55.61	8.903	
8,400.0	7,109.1	8,410.1	7,109.1	29.4	29.8	90.00	1,273.4	385.1	495.1	436.2	58.84	8.413	
8,500.0	7,108.6	8,510.1	7,108.6	31.1	31.4	90.00	1,373.4	385.6	495.1	432.9	62.15	7.966	
8,600.0	7,108.2	8,610.1	7,108.2	32.8	33.1	90.00	1,473.4	386.0	495.1	429.6	65.51	7.557	
8,700.0	7,107.7	8,710.1	7,107.7	34.5	34.8	90.00	1,573.4	386.4	495.1	426.1	68.92	7.184	
8,800.0	7,107.2	8,810.1	7,107.2	36.2	36.5	90.00	1,673.4	386.8	495.1	422.7	72.37	6.841	
8,900.0	7,106.7	8,910.1	7,106.7	37.9	38.2	90.00	1,773.4	387.2	495.1	419.2	75.85	6.526	
9,000.0	7,106.3	9,010.1	7,106.3	39.7	39.9	90.00	1,873.4	387.6	495.1	415.7	79.37	6.237	
9,100.0	7,105.8	9,110.1	7,105.8	41.5	41.7	90.00	1,973.4	388.1	495.1	412.1	82.92	5.970	
9,200.0	7,105.3	9,210.1	7,105.3	43.3	43.5	90.00	2,073.4	388.5	495.1	408.6	86.49	5.724	
9,300.0	7,104.9	9,310.1	7,104.9	45.1	45.3	90.00	2,173.4	388.9	495.1	405.0	90.08	5.496	
9,400.0	7,104.4	9,410.1	7,104.4	46.9	47.1	90.00	2,273.4	389.3	495.1	401.4	93.69	5.284	
9,500.0	7,103.9	9,510.1	7,103.9	48.7	48.9	90.00	2,373.4	389.7	495.1	397.7	97.32	5.087	
9,600.0	7,103.4	9,610.1	7,103.4	50.5	50.7	90.00	2,473.4	390.2	495.1	394.1	100.96	4.904	
9,700.0	7,103.0	9,710.1	7,103.0	52.3	52.5	90.00	2,573.4	390.6	495.1	390.4	104.61	4.732	
9,800.0	7,102.5	9,810.1	7,102.5	54.2	54.3	90.00	2,673.4	391.0	495.1	386.8	108.28	4.572	
9,900.0	7,102.0	9,910.1	7,102.0	56.0	56.2	90.00	2,773.4	391.4	495.0	383.1	111.96	4.422	
10,000.0	7,101.6	10,010.1	7,101.6	57.8	58.0	90.00	2,873.4	391.8	495.0	379.4	115.65	4.281	
10,100.0	7,101.1	10,110.1	7,101.1	59.7	59.8	90.00	2,973.4	392.3	495.0	375.7	119.34	4.148	
10,200.0	7,100.6	10,210.1	7,100.6	61.5	61.7	90.00	3,073.3	392.7	495.0	372.0	123.05	4.023	
10,300.0	7,100.1	10,310.1	7,100.1	63.4	63.5	90.00	3,173.3	393.1	495.0	368.3	126.76	3.905	

CC - Min centre to center distance or convergent point, SF - min separation factor, ES - min ellipse separation

Company:	Verdad Oil & Gas Corporation	Local Co-ordinate Reference:	Well Meehl 01N-65W-24-3N
Project:	SEC.24-T1N-R65W	TVD Reference:	WELL @ 5038.5ft (RKB - 16.5')
Reference Site:	Meehl 01N-65W-24 Pad Sec.24-T01N-R65W	MD Reference:	WELL @ 5038.5ft (RKB - 16.5')
Site Error:	0.0ft	North Reference:	True
Reference Well:	Meehl 01N-65W-24-3N	Survey Calculation Method:	Minimum Curvature
Well Error:	0.0ft	Output errors are at	2.00 sigma
Reference Wellbore	Wellbore #1	Database:	landmark
Reference Design:	Plan #1 (10-17-14)	Offset TVD Reference:	Offset Datum

Offset Design Meehl 01N-65W-24 Pad Sec.24-T01N-R65W - Meehl 01N-65W-24-6N - Wellbore #1 - Plan #1 (10-17-1												Offset Site Error:	0.0 ft
Survey Program: 0-MWD												Offset Well Error:	0.0 ft
Reference		Offset		Semi Major Axis			Distance						
Measured Depth (ft)	Vertical Depth (ft)	Measured Depth (ft)	Vertical Depth (ft)	Reference (ft)	Offset (ft)	Highside Toolface (°)	Offset Wellbore Centre +N/-S (ft)	+E/-W (ft)	Between Centres (ft)	Between Ellipses (ft)	Minimum Separation (ft)	Separation Factor	Warning
10,400.0	7,099.7	10,410.1	7,099.7	65.3	65.4	90.00	3,273.3	393.5	495.0	364.6	130.48	3.794	
10,500.0	7,099.2	10,510.1	7,099.2	67.1	67.2	90.00	3,373.3	393.9	495.0	360.8	134.20	3.689	
10,600.0	7,098.7	10,610.1	7,098.7	69.0	69.1	90.00	3,473.3	394.3	495.0	357.1	137.93	3.589	
10,700.0	7,098.3	10,710.1	7,098.3	70.9	71.0	90.00	3,573.3	394.8	495.0	353.4	141.67	3.494	
10,800.0	7,097.8	10,810.1	7,097.8	72.7	72.8	90.00	3,673.3	395.2	495.0	349.6	145.41	3.405	
10,900.0	7,097.3	10,910.1	7,097.3	74.6	74.7	90.00	3,773.3	395.6	495.0	345.9	149.15	3.319	
11,000.0	7,096.8	11,010.1	7,096.8	76.5	76.6	90.00	3,873.3	396.0	495.0	342.1	152.90	3.238	
11,100.0	7,096.4	11,110.1	7,096.4	78.4	78.4	90.00	3,973.3	396.4	495.0	338.4	156.65	3.160	
11,200.0	7,095.9	11,210.1	7,095.9	80.2	80.3	90.00	4,073.3	396.9	495.0	334.6	160.41	3.086	
11,300.0	7,095.4	11,310.1	7,095.4	82.1	82.2	90.00	4,173.3	397.3	495.0	330.9	164.17	3.015	
11,400.0	7,095.0	11,410.1	7,095.0	84.0	84.1	90.00	4,273.3	397.7	495.0	327.1	167.93	2.948	
11,500.0	7,094.5	11,510.1	7,094.5	85.9	86.0	90.00	4,373.3	398.1	495.0	323.3	171.70	2.883	
11,600.0	7,094.0	11,610.1	7,094.0	87.8	87.8	90.00	4,473.3	398.5	495.0	319.6	175.46	2.821	
11,700.0	7,093.5	11,710.1	7,093.5	89.6	89.7	90.00	4,573.3	399.0	495.0	315.8	179.20	2.762	
11,708.3	7,093.5	11,718.4	7,093.5	89.8	89.8	90.00	4,581.6	399.0	495.0	315.6	179.48	2.758	
11,709.2	7,093.5	11,719.2	7,093.5	89.8	89.8	90.00	4,582.4	399.0	495.0	315.5	179.51	2.758 SF	

Company:	Verdad Oil & Gas Corporation	Local Co-ordinate Reference:	Well Meehl 01N-65W-24-3N
Project:	SEC.24-T1N-R65W	TVD Reference:	WELL @ 5038.5ft (RKB - 16.5')
Reference Site:	Meehl 01N-65W-24 Pad Sec.24-T01N-R65W	MD Reference:	WELL @ 5038.5ft (RKB - 16.5')
Site Error:	0.0ft	North Reference:	True
Reference Well:	Meehl 01N-65W-24-3N	Survey Calculation Method:	Minimum Curvature
Well Error:	0.0ft	Output errors are at	2.00 sigma
Reference Wellbore	Wellbore #1	Database:	landmark
Reference Design:	Plan #1 (10-17-14)	Offset TVD Reference:	Offset Datum

Offset Design													Offset Site Error:	0.0 ft
Survey Program: 0-MWD													Offset Well Error:	0.0 ft
Reference		Offset		Semi Major Axis			Distance							Warning
Measured Depth (ft)	Vertical Depth (ft)	Measured Depth (ft)	Vertical Depth (ft)	Reference (ft)	Offset (ft)	Highside Toolface (°)	Offset Wellbore Centre +N/-S (ft)	+E/-W (ft)	Between Centres (ft)	Between Ellipses (ft)	Minimum Separation (ft)	Separation Factor		
0.0	0.0	0.0	0.0	0.0	0.0	89.68	0.3	60.2	60.2					
100.0	100.0	100.0	100.0	0.1	0.1	89.68	0.3	60.2	60.2	60.0	0.22	267.876		
200.0	200.0	200.0	200.0	0.3	0.3	89.68	0.3	60.2	60.2	59.5	0.67	89.292		
300.0	300.0	300.0	300.0	0.6	0.6	89.68	0.3	60.2	60.2	59.1	1.12	53.575		
400.0	400.0	400.0	400.0	0.8	0.8	89.68	0.3	60.2	60.2	58.6	1.57	38.268		
500.0	500.0	500.0	500.0	1.0	1.0	89.68	0.3	60.2	60.2	58.2	2.02	29.764		
600.0	600.0	600.0	600.0	1.2	1.2	89.68	0.3	60.2	60.2	57.7	2.47	24.352		
700.0	700.0	700.0	700.0	1.5	1.5	89.68	0.3	60.2	60.2	57.3	2.92	20.606		
800.0	800.0	800.0	800.0	1.7	1.7	89.68	0.3	60.2	60.2	56.8	3.37	17.858		
900.0	900.0	900.0	900.0	1.9	1.9	89.68	0.3	60.2	60.2	56.4	3.82	15.757		
1,000.0	1,000.0	1,000.0	1,000.0	2.1	2.1	89.68	0.3	60.2	60.2	55.9	4.27	14.099		
1,100.0	1,100.0	1,100.0	1,100.0	2.4	2.4	89.68	0.3	60.2	60.2	55.5	4.72	12.756		
1,200.0	1,200.0	1,200.0	1,200.0	2.6	2.6	89.68	0.3	60.2	60.2	55.0	5.17	11.647 CC, ES		
1,300.0	1,300.0	1,298.1	1,298.1	2.8	2.8	90.33	-0.4	61.7	61.8	56.2	5.60	11.039		
1,400.0	1,400.0	1,395.9	1,395.8	3.0	3.0	92.10	-2.4	66.3	66.5	60.5	6.01	11.066		
1,500.0	1,500.0	1,493.4	1,492.8	3.3	3.2	94.54	-5.9	73.9	74.5	68.0	6.43	11.579		
1,600.0	1,600.0	1,590.1	1,588.9	3.5	3.4	97.18	-10.6	84.4	85.7	78.9	6.86	12.496		
1,700.0	1,700.0	1,685.9	1,683.6	3.7	3.6	-108.78	-16.6	97.6	101.0	93.7	7.25	13.922		
1,800.0	1,799.8	1,783.6	1,779.8	3.9	3.9	-108.58	-23.7	113.1	119.4	111.8	7.64	15.632		
1,900.0	1,899.5	1,881.6	1,876.3	4.0	4.2	-109.70	-30.7	128.7	139.0	131.0	8.04	17.298		
2,000.0	1,998.8	1,979.3	1,972.4	4.2	4.5	-111.66	-37.8	144.2	159.8	151.3	8.46	18.892		
2,100.0	2,098.0	2,076.9	2,068.6	4.5	4.9	-113.41	-44.8	159.7	180.8	171.9	8.90	20.316		
2,200.0	2,197.3	2,174.5	2,164.7	4.7	5.2	-114.80	-51.9	175.3	202.0	192.7	9.36	21.580		
2,300.0	2,296.6	2,272.1	2,260.8	4.9	5.5	-115.92	-58.9	190.8	223.3	213.5	9.84	22.698		
2,400.0	2,395.9	2,369.8	2,356.9	5.2	5.9	-116.85	-65.9	206.3	244.6	234.3	10.33	23.690		
2,500.0	2,495.1	2,467.4	2,453.1	5.4	6.2	-117.63	-73.0	221.8	266.0	255.2	10.83	24.570		
2,600.0	2,594.4	2,565.0	2,549.2	5.7	6.6	-118.30	-80.0	237.3	287.5	276.1	11.34	25.355		
2,700.0	2,693.7	2,662.6	2,645.3	6.0	7.0	-118.87	-87.1	252.8	308.9	297.1	11.86	26.056		
2,800.0	2,793.0	2,760.2	2,741.4	6.2	7.3	-119.37	-94.1	268.3	330.4	318.1	12.38	26.684		
2,900.0	2,892.2	2,857.9	2,837.6	6.5	7.7	-119.80	-101.1	283.9	352.0	339.0	12.92	27.249		
3,000.0	2,991.5	2,955.5	2,933.7	6.8	8.1	-120.19	-108.2	299.4	373.5	360.0	13.46	27.759		
3,100.0	3,090.8	3,053.1	3,029.8	7.1	8.4	-120.53	-115.2	314.9	395.0	381.0	14.00	28.220		
3,200.0	3,190.0	3,150.7	3,126.0	7.4	8.8	-120.84	-122.2	330.4	416.6	402.1	14.55	28.639		
3,300.0	3,289.3	3,248.4	3,222.1	7.7	9.2	-121.12	-129.3	345.9	438.2	423.1	15.10	29.021		
3,400.0	3,388.6	3,346.0	3,318.2	8.0	9.6	-121.37	-136.3	361.4	459.8	444.1	15.65	29.369		
3,500.0	3,487.9	3,443.6	3,414.3	8.3	10.0	-121.60	-143.4	377.0	481.3	465.1	16.21	29.689		
3,600.0	3,587.1	3,541.2	3,510.5	8.6	10.3	-121.81	-150.4	392.5	502.9	486.2	16.77	29.982		
3,700.0	3,686.4	3,638.9	3,606.6	8.9	10.7	-122.10	-157.4	408.0	524.5	507.1	17.34	30.240		
3,800.0	3,786.0	3,736.8	3,703.0	9.1	11.1	-122.37	-164.5	423.6	544.6	526.7	17.88	30.452		
3,900.0	3,885.8	3,835.1	3,799.8	9.3	11.5	-122.31	-171.6	439.2	562.9	544.5	18.40	30.599		
4,000.0	3,985.8	3,933.5	3,896.7	9.5	11.9	-121.94	-178.7	454.8	579.4	560.5	18.88	30.696		
4,100.0	4,085.8	4,032.0	3,993.6	9.7	12.3	86.64	-185.8	470.5	594.9	575.5	19.33	30.771		
4,200.0	4,185.8	4,130.4	4,090.6	9.9	12.7	87.40	-192.9	486.1	610.4	590.6	19.77	30.869		
4,300.0	4,285.8	4,228.9	4,187.5	10.0	13.1	88.13	-200.0	501.8	626.0	605.8	20.22	30.967		
4,400.0	4,385.8	4,349.1	4,306.2	10.2	13.4	88.88	-207.8	519.0	640.3	619.7	20.66	30.989		
4,500.0	4,485.8	4,473.9	4,430.2	10.4	13.7	89.43	-213.8	532.2	650.8	629.7	21.09	30.863		
4,600.0	4,585.8	4,599.7	4,555.7	10.6	14.0	89.77	-217.6	540.5	657.4	635.9	21.51	30.568		
4,700.0	4,685.8	4,726.2	4,682.0	10.8	14.2	89.90	-219.0	543.8	660.0	638.1	21.92	30.114		
4,800.0	4,785.8	4,829.9	4,785.8	11.0	14.4	89.90	-219.1	543.8	660.0	637.7	22.29	29.604		
4,900.0	4,885.8	4,929.9	4,885.8	11.2	14.5	89.90	-219.1	543.8	660.0	637.3	22.67	29.114		
5,000.0	4,985.8	5,029.9	4,985.8	11.4	14.7	89.90	-219.1	543.8	660.0	637.0	23.05	28.636		
5,100.0	5,085.8	5,129.9	5,085.8	11.6	14.8	89.90	-219.1	543.8	660.0	636.6	23.43	28.171		

CC - Min centre to center distance or convergent point, SF - min separation factor, ES - min ellipse separation

Company:	Verdad Oil & Gas Corporation	Local Co-ordinate Reference:	Well Meehl 01N-65W-24-3N
Project:	SEC.24-T1N-R65W	TVD Reference:	WELL @ 5038.5ft (RKB - 16.5')
Reference Site:	Meehl 01N-65W-24 Pad Sec.24-T01N-R65W	MD Reference:	WELL @ 5038.5ft (RKB - 16.5')
Site Error:	0.0ft	North Reference:	True
Reference Well:	Meehl 01N-65W-24-3N	Survey Calculation Method:	Minimum Curvature
Well Error:	0.0ft	Output errors are at	2.00 sigma
Reference Wellbore	Wellbore #1	Database:	landmark
Reference Design:	Plan #1 (10-17-14)	Offset TVD Reference:	Offset Datum

Offset Design												Offset Site Error:	0.0 ft
Survey Program: 0-MWD												Offset Well Error:	0.0 ft
Reference		Offset		Semi Major Axis			Distance						Warning
Measured Depth (ft)	Vertical Depth (ft)	Measured Depth (ft)	Vertical Depth (ft)	Reference (ft)	Offset (ft)	Highside Toolface (°)	Offset Wellbore Centre +N/-S (ft)	+E/-W (ft)	Between Centres (ft)	Between Ellipses (ft)	Minimum Separation (ft)	Separation Factor	
5,200.0	5,185.8	5,229.9	5,185.8	11.8	15.0	89.90	-219.1	543.8	660.0	636.2	23.81	27.718	
5,300.0	5,285.8	5,329.9	5,285.8	12.0	15.1	89.90	-219.1	543.8	660.0	635.8	24.20	27.276	
5,400.0	5,385.8	5,429.9	5,385.8	12.2	15.3	89.90	-219.1	543.8	660.0	635.4	24.58	26.846	
5,500.0	5,485.8	5,529.9	5,485.8	12.4	15.4	89.90	-219.1	543.8	660.0	635.0	24.97	26.428	
5,600.0	5,585.8	5,629.9	5,585.8	12.6	15.6	89.90	-219.1	543.8	660.0	634.6	25.37	26.020	
5,700.0	5,685.8	5,729.9	5,685.8	12.8	15.8	89.90	-219.1	543.8	660.0	634.3	25.76	25.622	
5,800.0	5,785.8	5,829.9	5,785.8	13.0	15.9	89.90	-219.1	543.8	660.0	633.9	26.15	25.235	
5,900.0	5,885.8	5,929.9	5,885.8	13.2	16.1	89.90	-219.1	543.8	660.0	633.5	26.55	24.858	
6,000.0	5,985.8	6,029.9	5,985.8	13.4	16.3	89.90	-219.1	543.8	660.0	633.1	26.95	24.490	
6,100.0	6,085.8	6,129.9	6,085.8	13.6	16.4	89.90	-219.1	543.8	660.0	632.7	27.35	24.132	
6,200.0	6,185.8	6,229.9	6,185.8	13.8	16.6	89.90	-219.1	543.8	660.0	632.3	27.75	23.783	
6,300.0	6,285.8	6,329.9	6,285.8	14.0	16.8	89.90	-219.1	543.8	660.0	631.9	28.15	23.442	
6,400.0	6,385.8	6,429.9	6,385.8	14.2	17.0	89.90	-219.1	543.8	660.0	631.5	28.56	23.110	
6,500.0	6,485.8	6,529.9	6,485.8	14.4	17.1	89.90	-219.1	543.8	660.0	631.0	28.97	22.786	
6,600.0	6,585.8	6,629.9	6,585.8	14.6	17.3	89.90	-219.1	543.8	660.0	630.6	29.37	22.471	
6,700.0	6,685.3	6,729.2	6,684.6	14.8	17.5	89.67	-210.9	543.8	660.0	630.3	29.70	22.225	
6,800.0	6,781.4	6,828.5	6,780.1	14.9	17.5	89.68	-184.2	544.0	660.0	630.1	29.88	22.086	
6,900.0	6,870.6	6,927.8	6,868.8	14.9	17.6	89.71	-139.9	544.1	660.0	630.0	29.99	22.009	
7,000.0	6,949.6	7,027.3	6,947.6	15.0	17.6	89.75	-79.5	544.4	660.0	629.9	30.11	21.917	
7,100.0	7,015.4	7,126.8	7,013.6	15.0	17.6	89.80	-5.2	544.7	660.0	629.6	30.38	21.724	
7,200.0	7,065.8	7,226.4	7,064.3	15.2	17.6	89.86	80.4	545.1	660.0	629.1	30.91	21.352	
7,300.0	7,098.7	7,326.1	7,097.8	15.7	17.7	89.92	174.2	545.5	660.0	628.2	31.78	20.767	
7,400.0	7,113.1	7,426.0	7,112.9	16.3	18.0	89.98	272.7	545.9	660.0	627.0	33.01	19.993	
7,500.0	7,113.3	7,526.0	7,113.3	17.2	18.6	90.00	372.7	546.3	660.0	625.4	34.60	19.077	
7,600.0	7,112.9	7,626.0	7,112.9	18.1	19.5	90.00	472.7	546.7	660.0	623.5	36.50	18.082	
7,700.0	7,112.4	7,726.0	7,112.4	19.2	20.5	90.00	572.7	547.1	660.0	621.3	38.69	17.058	
7,800.0	7,111.9	7,826.0	7,111.9	20.5	21.6	90.00	672.7	547.5	660.0	618.9	41.12	16.049	
7,900.0	7,111.5	7,926.0	7,111.5	21.8	22.9	90.00	772.7	548.0	660.0	616.2	43.75	15.084	
8,000.0	7,111.0	8,026.0	7,111.0	23.2	24.2	90.00	872.7	548.4	660.0	613.4	46.55	14.177	
8,100.0	7,110.5	8,126.0	7,110.5	24.7	25.6	90.00	972.7	548.8	660.0	610.5	49.49	13.336	
8,200.0	7,110.0	8,226.0	7,110.0	26.2	27.1	90.00	1,072.7	549.2	660.0	607.4	52.54	12.562	
8,300.0	7,109.6	8,326.0	7,109.6	27.8	28.7	90.00	1,172.7	549.6	660.0	604.3	55.69	11.852	
8,400.0	7,109.1	8,426.0	7,109.1	29.4	30.2	90.00	1,272.7	550.1	660.0	601.1	58.91	11.202	
8,500.0	7,108.6	8,526.0	7,108.6	31.1	31.8	90.00	1,372.7	550.5	660.0	597.8	62.21	10.609	
8,600.0	7,108.2	8,626.0	7,108.2	32.8	33.5	90.00	1,472.7	550.9	660.0	594.4	65.56	10.066	
8,700.0	7,107.7	8,726.0	7,107.7	34.5	35.1	90.00	1,572.7	551.3	660.0	591.0	68.97	9.569	
8,800.0	7,107.2	8,826.0	7,107.2	36.2	36.8	90.00	1,672.7	551.7	660.0	587.6	72.41	9.114	
8,900.0	7,106.7	8,926.0	7,106.7	37.9	38.6	90.00	1,772.7	552.1	660.0	584.1	75.90	8.696	
9,000.0	7,106.3	9,026.0	7,106.3	39.7	40.3	90.00	1,872.7	552.6	660.0	580.6	79.41	8.311	
9,100.0	7,105.8	9,126.0	7,105.8	41.5	42.0	90.00	1,972.7	553.0	660.0	577.0	82.95	7.956	
9,200.0	7,105.3	9,226.0	7,105.3	43.3	43.8	90.00	2,072.7	553.4	660.0	573.5	86.52	7.628	
9,300.0	7,104.9	9,326.0	7,104.9	45.1	45.6	90.00	2,172.7	553.8	660.0	569.9	90.11	7.324	
9,400.0	7,104.4	9,426.0	7,104.4	46.9	47.3	90.00	2,272.7	554.2	660.0	566.3	93.71	7.042	
9,500.0	7,103.9	9,526.0	7,103.9	48.7	49.1	90.00	2,372.7	554.7	660.0	562.6	97.34	6.780	
9,600.0	7,103.4	9,626.0	7,103.4	50.5	50.9	90.00	2,472.7	555.1	660.0	559.0	100.98	6.536	
9,700.0	7,103.0	9,726.0	7,103.0	52.3	52.8	90.00	2,572.7	555.5	660.0	555.3	104.63	6.308	
9,800.0	7,102.5	9,826.0	7,102.5	54.2	54.6	90.00	2,672.7	555.9	660.0	551.7	108.29	6.094	
9,900.0	7,102.0	9,926.0	7,102.0	56.0	56.4	90.00	2,772.7	556.3	660.0	548.0	111.97	5.894	
10,000.0	7,101.6	10,026.0	7,101.6	57.8	58.2	90.00	2,872.7	556.8	660.0	544.3	115.65	5.706	
10,100.0	7,101.1	10,126.0	7,101.1	59.7	60.1	90.00	2,972.7	557.2	660.0	540.6	119.35	5.530	
10,200.0	7,100.6	10,226.0	7,100.6	61.5	61.9	90.00	3,072.7	557.6	660.0	536.9	123.05	5.363	
10,300.0	7,100.1	10,326.0	7,100.1	63.4	63.7	90.00	3,172.7	558.0	660.0	533.2	126.76	5.206	

CC - Min centre to center distance or convergent point, SF - min separation factor, ES - min ellipse separation

Company:	Verdad Oil & Gas Corporation	Local Co-ordinate Reference:	Well Meehl 01N-65W-24-3N
Project:	SEC.24-T1N-R65W	TVD Reference:	WELL @ 5038.5ft (RKB - 16.5')
Reference Site:	Meehl 01N-65W-24 Pad Sec.24-T01N-R65W	MD Reference:	WELL @ 5038.5ft (RKB - 16.5')
Site Error:	0.0ft	North Reference:	True
Reference Well:	Meehl 01N-65W-24-3N	Survey Calculation Method:	Minimum Curvature
Well Error:	0.0ft	Output errors are at	2.00 sigma
Reference Wellbore	Wellbore #1	Database:	landmark
Reference Design:	Plan #1 (10-17-14)	Offset TVD Reference:	Offset Datum

Offset Design Meehl 01N-65W-24 Pad Sec.24-T01N-R65W - Meehl 01N-65W-24-7N - Wellbore #1 - Plan #1 (10-17-1												Offset Site Error:	0.0 ft
Survey Program: 0-MWD												Offset Well Error:	0.0 ft
Reference	Offset	Semi Major Axis		Distance									
Measured Depth (ft)	Vertical Depth (ft)	Measured Depth (ft)	Vertical Depth (ft)	Reference (ft)	Offset (ft)	Highside Toolface (°)	Offset Wellbore Centre +N/-S (ft)	+E/-W (ft)	Between Centres (ft)	Between Ellipses (ft)	Minimum Separation (ft)	Separation Factor	Warning
10,400.0	7,099.7	10,426.0	7,099.7	65.3	65.6	90.00	3,272.7	558.4	660.0	529.5	130.48	5.058	
10,500.0	7,099.2	10,526.0	7,099.2	67.1	67.4	90.00	3,372.7	558.8	660.0	525.8	134.20	4.918	
10,600.0	7,098.7	10,626.0	7,098.7	69.0	69.3	90.00	3,472.7	559.3	660.0	522.0	137.93	4.785	
10,700.0	7,098.3	10,726.0	7,098.3	70.9	71.1	90.00	3,572.6	559.7	660.0	518.3	141.66	4.659	
10,800.0	7,097.8	10,826.0	7,097.8	72.7	73.0	90.00	3,672.6	560.1	660.0	514.6	145.40	4.539	
10,900.0	7,097.3	10,926.0	7,097.3	74.6	74.9	90.00	3,772.6	560.5	660.0	510.8	149.15	4.425	
11,000.0	7,096.8	11,026.0	7,096.8	76.5	76.7	90.00	3,872.6	560.9	660.0	507.1	152.89	4.316	
11,100.0	7,096.4	11,126.0	7,096.4	78.4	78.6	90.00	3,972.6	561.4	660.0	503.3	156.65	4.213	
11,200.0	7,095.9	11,226.0	7,095.9	80.2	80.5	90.00	4,072.6	561.8	660.0	499.6	160.40	4.114	
11,300.0	7,095.4	11,326.0	7,095.4	82.1	82.3	90.00	4,172.6	562.2	660.0	495.8	164.16	4.020	
11,400.0	7,095.0	11,426.0	7,095.0	84.0	84.2	90.00	4,272.6	562.6	660.0	492.0	167.92	3.930	
11,500.0	7,094.5	11,526.0	7,094.5	85.9	86.1	90.00	4,372.6	563.0	660.0	488.3	171.69	3.844	
11,600.0	7,094.0	11,626.0	7,094.0	87.8	88.0	90.00	4,472.6	563.4	659.9	484.5	175.45	3.761	
11,700.0	7,093.5	11,726.0	7,093.5	89.6	89.8	90.00	4,572.6	563.9	659.9	480.7	179.22	3.682	
11,709.2	7,093.5	11,735.2	7,093.5	89.8	90.0	90.00	4,581.8	563.9	659.9	480.4	179.57	3.675 SF	

Company:	Verdad Oil & Gas Corporation	Local Co-ordinate Reference:	Well Meehl 01N-65W-24-3N
Project:	SEC.24-T1N-R65W	TVD Reference:	WELL @ 5038.5ft (RKB - 16.5')
Reference Site:	Meehl 01N-65W-24 Pad Sec.24-T01N-R65W	MD Reference:	WELL @ 5038.5ft (RKB - 16.5')
Site Error:	0.0ft	North Reference:	True
Reference Well:	Meehl 01N-65W-24-3N	Survey Calculation Method:	Minimum Curvature
Well Error:	0.0ft	Output errors are at	2.00 sigma
Reference Wellbore	Wellbore #1	Database:	landmark
Reference Design:	Plan #1 (10-17-14)	Offset TVD Reference:	Offset Datum

Offset Design													Offset Site Error:	0.0 ft
Survey Program: 0-MWD													Offset Well Error:	0.0 ft
Reference		Offset		Semi Major Axis			Distance							Warning
Measured Depth (ft)	Vertical Depth (ft)	Measured Depth (ft)	Vertical Depth (ft)	Reference (ft)	Offset (ft)	Highside Toolface (°)	Offset Wellbore Centre +N/-S (ft)	+E/-W (ft)	Between Centres (ft)	Between Ellipses (ft)	Minimum Separation (ft)	Separation Factor		
0.0	0.0	0.0	0.0	0.0	0.0	89.75	0.3	75.1	75.1					
100.0	100.0	100.0	100.0	0.1	0.1	89.75	0.3	75.1	75.1	74.8	0.22	333.909		
200.0	200.0	200.0	200.0	0.3	0.3	89.75	0.3	75.1	75.1	74.4	0.67	111.303		
300.0	300.0	300.0	300.0	0.6	0.6	89.75	0.3	75.1	75.1	73.9	1.12	66.782		
400.0	400.0	400.0	400.0	0.8	0.8	89.75	0.3	75.1	75.1	73.5	1.57	47.701		
500.0	500.0	500.0	500.0	1.0	1.0	89.75	0.3	75.1	75.1	73.0	2.02	37.101		
600.0	600.0	600.0	600.0	1.2	1.2	89.75	0.3	75.1	75.1	72.6	2.47	30.355 CC, ES		
700.0	700.0	697.5	697.5	1.5	1.4	90.16	-0.2	76.6	76.7	73.8	2.90	26.438		
800.0	800.0	794.9	794.7	1.7	1.6	91.30	-1.8	81.3	81.5	78.2	3.32	24.545		
900.0	900.0	891.7	891.2	1.9	1.9	92.91	-4.5	89.1	89.6	85.9	3.75	23.868		
1,000.0	1,000.0	988.0	986.8	2.1	2.1	94.72	-8.2	99.8	101.0	96.8	4.20	24.034		
1,100.0	1,100.0	1,083.3	1,081.0	2.4	2.4	96.52	-13.0	113.5	115.8	111.1	4.67	24.793		
1,200.0	1,200.0	1,177.6	1,173.7	2.6	2.7	98.16	-18.6	129.9	133.8	128.7	5.15	25.971		
1,300.0	1,300.0	1,273.7	1,267.6	2.8	3.0	99.61	-25.2	149.0	154.5	148.9	5.66	27.317		
1,400.0	1,400.0	1,371.4	1,363.1	3.0	3.4	100.75	-32.0	168.6	175.5	169.4	6.17	28.455		
1,500.0	1,500.0	1,469.1	1,458.6	3.3	3.8	101.65	-38.8	188.2	196.6	189.9	6.69	29.400		
1,600.0	1,600.0	1,566.8	1,554.1	3.5	4.3	102.37	-45.6	207.8	217.7	210.5	7.21	30.195		
1,700.0	1,700.0	1,664.4	1,649.5	3.7	4.7	-104.84	-52.4	227.4	239.2	231.9	7.35	32.553		
1,800.0	1,799.8	1,761.9	1,744.7	3.9	5.1	-105.00	-59.1	247.0	261.7	253.9	7.77	33.695		
1,900.0	1,899.5	1,858.9	1,839.5	4.0	5.6	-105.74	-65.9	266.5	285.1	276.9	8.20	34.780		
2,000.0	1,998.8	1,955.6	1,934.0	4.2	6.0	-107.08	-72.6	285.9	309.4	300.8	8.65	35.769		
2,100.0	2,098.0	2,052.2	2,028.4	4.5	6.4	-108.48	-79.3	305.3	334.0	324.9	9.13	36.600		
2,200.0	2,197.3	2,148.8	2,122.8	4.7	6.9	-109.68	-86.0	324.7	358.8	349.2	9.62	37.303		
2,300.0	2,296.6	2,245.4	2,217.2	4.9	7.3	-110.72	-92.7	344.1	383.8	373.7	10.13	37.900		
2,400.0	2,395.9	2,342.1	2,311.6	5.2	7.8	-111.64	-99.4	363.5	408.8	398.2	10.64	38.409		
2,500.0	2,495.1	2,438.7	2,406.0	5.4	8.2	-112.45	-106.1	382.9	433.9	422.8	11.17	38.844		
2,600.0	2,594.4	2,535.3	2,500.5	5.7	8.7	-113.18	-112.8	402.3	459.1	447.4	11.71	39.217		
2,700.0	2,693.7	2,631.9	2,594.9	6.0	9.1	-113.83	-119.5	421.7	484.4	472.1	12.25	39.540		
2,800.0	2,793.0	2,728.5	2,689.3	6.2	9.6	-114.41	-126.2	441.1	509.7	496.9	12.80	39.820		
2,900.0	2,892.2	2,825.2	2,783.7	6.5	10.0	-114.94	-132.9	460.5	535.1	521.7	13.36	40.064		
3,000.0	2,991.5	2,921.8	2,878.1	6.8	10.5	-115.42	-139.6	479.9	560.5	546.5	13.91	40.277		
3,100.0	3,090.8	3,018.4	2,972.5	7.1	10.9	-115.86	-146.3	499.3	585.9	571.4	14.48	40.465		
3,200.0	3,190.0	3,115.0	3,066.9	7.4	11.4	-116.27	-153.0	518.7	611.3	596.3	15.05	40.630		
3,300.0	3,289.3	3,211.6	3,161.4	7.7	11.8	-116.64	-159.8	538.0	636.8	621.2	15.62	40.777		
3,400.0	3,388.6	3,308.3	3,255.8	8.0	12.3	-116.98	-166.5	557.4	662.3	646.1	16.19	40.907		
3,500.0	3,487.9	3,404.9	3,350.2	8.3	12.7	-117.30	-173.2	576.8	687.9	671.1	16.77	41.023		
3,600.0	3,587.1	3,501.5	3,444.6	8.6	13.2	-117.59	-179.9	596.2	713.4	696.1	17.35	41.127		
3,700.0	3,686.4	3,598.1	3,539.0	8.9	13.6	-118.00	-186.6	615.6	738.9	721.0	17.94	41.194		
3,800.0	3,786.0	3,695.1	3,633.8	9.1	14.1	-118.50	-193.3	635.1	763.2	744.7	18.51	41.231		
3,900.0	3,885.8	3,805.8	3,742.1	9.3	14.5	-118.71	-200.8	656.9	785.5	766.4	19.07	41.197		
4,000.0	3,985.8	3,939.0	3,873.2	9.5	14.9	-118.64	-208.3	678.5	802.7	783.2	19.57	41.029		
4,100.0	4,085.8	4,074.1	4,007.3	9.7	15.3	89.55	-213.9	694.6	814.6	794.6	20.02	40.695		
4,200.0	4,185.8	4,210.6	4,143.4	9.9	15.6	89.80	-217.4	704.7	822.0	801.6	20.44	40.224		
4,300.0	4,285.8	4,347.8	4,280.5	10.0	15.7	89.90	-218.8	708.7	824.9	804.1	20.84	39.574		
4,400.0	4,385.8	4,453.1	4,385.8	10.2	15.9	89.90	-218.8	708.8	825.0	803.7	21.21	38.898		
4,500.0	4,485.8	4,553.1	4,485.8	10.4	16.0	89.90	-218.8	708.8	825.0	803.4	21.57	38.254		
4,600.0	4,585.8	4,653.1	4,585.8	10.6	16.1	89.90	-218.8	708.8	825.0	803.0	21.93	37.625		
4,700.0	4,685.8	4,753.1	4,685.8	10.8	16.3	89.90	-218.8	708.8	825.0	802.7	22.29	37.010		
4,800.0	4,785.8	4,853.1	4,785.8	11.0	16.4	89.90	-218.8	708.8	825.0	802.3	22.66	36.411		
4,900.0	4,885.8	4,953.1	4,885.8	11.2	16.5	89.90	-218.8	708.8	825.0	801.9	23.03	35.826		
5,000.0	4,985.8	5,053.1	4,985.8	11.4	16.7	89.90	-218.8	708.8	825.0	801.6	23.40	35.256		
5,100.0	5,085.8	5,153.1	5,085.8	11.6	16.8	89.90	-218.8	708.8	825.0	801.2	23.77	34.700		

CC - Min centre to center distance or convergent point, SF - min separation factor, ES - min ellipse separation

Company:	Verdad Oil & Gas Corporation	Local Co-ordinate Reference:	Well Meehl 01N-65W-24-3N
Project:	SEC.24-T1N-R65W	TVD Reference:	WELL @ 5038.5ft (RKB - 16.5')
Reference Site:	Meehl 01N-65W-24 Pad Sec.24-T01N-R65W	MD Reference:	WELL @ 5038.5ft (RKB - 16.5')
Site Error:	0.0ft	North Reference:	True
Reference Well:	Meehl 01N-65W-24-3N	Survey Calculation Method:	Minimum Curvature
Well Error:	0.0ft	Output errors are at	2.00 sigma
Reference Wellbore	Wellbore #1	Database:	landmark
Reference Design:	Plan #1 (10-17-14)	Offset TVD Reference:	Offset Datum

Offset Design												Offset Site Error:	0.0 ft
Survey Program: 0-MWD												Offset Well Error:	0.0 ft
Reference		Offset		Semi Major Axis			Distance						
Measured Depth (ft)	Vertical Depth (ft)	Measured Depth (ft)	Vertical Depth (ft)	Reference (ft)	Offset (ft)	Highside Toolface (°)	Offset Wellbore Centre +N/-S (ft)	+E/-W (ft)	Between Centres (ft)	Between Ellipses (ft)	Minimum Separation (ft)	Separation Factor	Warning
5,200.0	5,185.8	5,253.1	5,185.8	11.8	16.9	89.90	-218.8	708.8	825.0	800.8	24.15	34.157	
5,300.0	5,285.8	5,353.1	5,285.8	12.0	17.1	89.90	-218.8	708.8	825.0	800.4	24.53	33.628	
5,400.0	5,385.8	5,453.1	5,385.8	12.2	17.2	89.90	-218.8	708.8	825.0	800.0	24.91	33.112	
5,500.0	5,485.8	5,553.1	5,485.8	12.4	17.4	89.90	-218.8	708.8	825.0	799.7	25.30	32.609	
5,600.0	5,585.8	5,653.1	5,585.8	12.6	17.5	89.90	-218.8	708.8	825.0	799.3	25.68	32.118	
5,700.0	5,685.8	5,753.1	5,685.8	12.8	17.7	89.90	-218.8	708.8	825.0	798.9	26.07	31.639	
5,800.0	5,785.8	5,853.1	5,785.8	13.0	17.8	89.90	-218.8	708.8	825.0	798.5	26.46	31.173	
5,900.0	5,885.8	5,953.1	5,885.8	13.2	18.0	89.90	-218.8	708.8	825.0	798.1	26.86	30.717	
6,000.0	5,985.8	6,053.1	5,985.8	13.4	18.1	89.90	-218.8	708.8	825.0	797.7	27.25	30.273	
6,100.0	6,085.8	6,153.1	6,085.8	13.6	18.3	89.90	-218.8	708.8	825.0	797.3	27.65	29.840	
6,200.0	6,185.8	6,253.1	6,185.8	13.8	18.4	89.90	-218.8	708.8	825.0	796.9	28.04	29.417	
6,300.0	6,285.8	6,353.1	6,285.8	14.0	18.6	89.90	-218.8	708.8	825.0	796.5	28.44	29.005	
6,400.0	6,385.8	6,453.1	6,385.8	14.2	18.7	89.90	-218.8	708.8	825.0	796.1	28.84	28.602	
6,500.0	6,485.8	6,553.1	6,485.8	14.4	18.9	89.90	-218.8	708.8	825.0	795.7	29.24	28.209	
6,600.0	6,585.8	6,653.1	6,585.8	14.6	19.0	89.90	-218.8	708.8	825.0	795.3	29.65	27.826	
6,700.0	6,685.8	6,753.1	6,685.8	14.8	19.2	89.67	-210.6	708.8	825.0	795.0	29.97	27.529	
6,800.0	6,781.4	6,851.4	6,779.8	14.9	19.3	89.68	-184.1	708.9	825.0	794.8	30.15	27.361	
6,900.0	6,870.6	6,950.5	6,868.4	14.9	19.3	89.71	-139.9	709.1	825.0	794.7	30.25	27.270	
6,965.7	6,923.9	7,015.8	6,921.4	15.0	19.3	89.74	-102.0	709.2	825.0	794.6	30.33	27.202	
7,000.0	6,949.6	7,049.8	6,947.1	15.0	19.3	89.75	-79.7	709.3	825.0	794.6	30.37	27.163	
7,100.0	7,015.4	7,149.2	7,013.1	15.0	19.3	89.80	-5.6	709.7	825.0	794.3	30.63	26.930	
7,200.0	7,065.8	7,248.7	7,063.9	15.2	19.3	89.86	79.8	710.0	825.0	793.8	31.15	26.480	
7,300.0	7,098.7	7,348.3	7,097.5	15.7	19.4	89.92	173.5	710.4	825.0	792.9	32.01	25.768	
7,400.0	7,113.1	7,448.2	7,112.8	16.3	19.7	89.98	272.0	710.8	825.0	791.7	33.24	24.822	
7,500.0	7,113.3	7,548.2	7,113.3	17.2	20.1	90.00	372.0	711.3	825.0	790.1	34.82	23.695	
7,600.0	7,112.9	7,648.2	7,112.9	18.1	20.8	90.00	472.0	711.7	825.0	788.3	36.71	22.474	
7,700.0	7,112.4	7,748.2	7,112.4	19.2	21.6	90.00	572.0	712.1	825.0	786.1	38.88	21.216	
7,800.0	7,111.9	7,848.2	7,111.9	20.5	22.7	90.00	672.0	712.5	825.0	783.7	41.30	19.974	
7,900.0	7,111.5	7,948.2	7,111.5	21.8	23.8	90.00	772.0	713.0	825.0	781.1	43.92	18.783	
8,000.0	7,111.0	8,048.2	7,111.0	23.2	25.1	90.00	872.0	713.4	825.0	778.3	46.71	17.663	
8,100.0	7,110.5	8,148.2	7,110.5	24.7	26.5	90.00	972.0	713.8	825.0	775.4	49.63	16.622	
8,200.0	7,110.0	8,248.2	7,110.0	26.2	27.9	90.00	1,072.0	714.2	825.0	772.3	52.67	15.662	
8,300.0	7,109.6	8,348.2	7,109.6	27.8	29.4	90.00	1,172.0	714.6	825.0	769.2	55.81	14.782	
8,400.0	7,109.1	8,448.2	7,109.1	29.4	30.9	90.00	1,272.0	715.1	825.0	766.0	59.03	13.976	
8,500.0	7,108.6	8,548.2	7,108.6	31.1	32.5	90.00	1,372.0	715.5	825.0	762.7	62.32	13.238	
8,600.0	7,108.2	8,648.2	7,108.2	32.8	34.1	90.00	1,472.0	715.9	825.0	759.3	65.67	12.564	
8,700.0	7,107.7	8,748.2	7,107.7	34.5	35.7	90.00	1,572.0	716.3	825.0	756.0	69.06	11.946	
8,800.0	7,107.2	8,848.2	7,107.2	36.2	37.4	90.00	1,672.0	716.8	825.0	752.5	72.50	11.379	
8,900.0	7,106.7	8,948.2	7,106.7	37.9	39.1	90.00	1,772.0	717.2	825.0	749.0	75.98	10.858	
9,000.0	7,106.3	9,048.2	7,106.3	39.7	40.8	90.00	1,871.9	717.6	825.0	745.5	79.49	10.379	
9,100.0	7,105.8	9,148.2	7,105.8	41.5	42.5	90.00	1,971.9	718.0	825.0	742.0	83.03	9.937	
9,200.0	7,105.3	9,248.2	7,105.3	43.3	44.3	90.00	2,071.9	718.5	825.0	738.4	86.59	9.528	
9,300.0	7,104.9	9,348.2	7,104.9	45.1	46.0	90.00	2,171.9	718.9	825.0	734.9	90.17	9.149	
9,400.0	7,104.4	9,448.2	7,104.4	46.9	47.8	90.00	2,271.9	719.3	825.0	731.3	93.78	8.798	
9,500.0	7,103.9	9,548.2	7,103.9	48.7	49.6	90.00	2,371.9	719.7	825.0	727.7	97.40	8.471	
9,600.0	7,103.4	9,648.2	7,103.4	50.5	51.3	90.00	2,471.9	720.2	825.1	724.0	101.03	8.166	
9,700.0	7,103.0	9,748.2	7,103.0	52.3	53.1	90.00	2,571.9	720.6	825.1	720.4	104.68	7.881	
9,800.0	7,102.5	9,848.2	7,102.5	54.2	54.9	90.00	2,671.9	721.0	825.1	716.7	108.35	7.615	
9,900.0	7,102.0	9,948.2	7,102.0	56.0	56.7	90.00	2,771.9	721.4	825.1	713.0	112.02	7.365	
10,000.0	7,101.6	10,048.2	7,101.6	57.8	58.6	90.00	2,871.9	721.9	825.1	709.4	115.70	7.131	
10,100.0	7,101.1	10,148.2	7,101.1	59.7	60.4	90.00	2,971.9	722.3	825.1	705.7	119.39	6.911	
10,200.0	7,100.6	10,248.2	7,100.6	61.5	62.2	90.00	3,071.9	722.7	825.1	702.0	123.09	6.703	

CC - Min centre to center distance or convergent point, SF - min separation factor, ES - min ellipse separation

Company:	Verdad Oil & Gas Corporation	Local Co-ordinate Reference:	Well Meehl 01N-65W-24-3N
Project:	SEC.24-T1N-R65W	TVD Reference:	WELL @ 5038.5ft (RKB - 16.5')
Reference Site:	Meehl 01N-65W-24 Pad Sec.24-T01N-R65W	MD Reference:	WELL @ 5038.5ft (RKB - 16.5')
Site Error:	0.0ft	North Reference:	True
Reference Well:	Meehl 01N-65W-24-3N	Survey Calculation Method:	Minimum Curvature
Well Error:	0.0ft	Output errors are at	2.00 sigma
Reference Wellbore	Wellbore #1	Database:	landmark
Reference Design:	Plan #1 (10-17-14)	Offset TVD Reference:	Offset Datum

Offset Design Meehl 01N-65W-24 Pad Sec.24-T01N-R65W - Meehl 01N-65W-24-8N - Wellbore #1 - Plan #1 (10-17-1												Offset Site Error:	0.0 ft
Survey Program: 0-MWD												Offset Well Error:	0.0 ft
Reference	Offset	Semi Major Axis		Distance									Warning
Measured Depth (ft)	Vertical Depth (ft)	Measured Depth (ft)	Vertical Depth (ft)	Reference (ft)	Offset (ft)	Highside Toolface (°)	Offset Wellbore Centre +N/-S (ft)	+E/-W (ft)	Between Centres (ft)	Between Ellipses (ft)	Minimum Separation (ft)	Separation Factor	
10,300.0	7,100.1	10,348.2	7,100.1	63.4	64.1	90.00	3,171.9	723.1	825.1	698.3	126.80	6.507	
10,400.0	7,099.7	10,448.2	7,099.7	65.3	65.9	90.00	3,271.9	723.6	825.1	694.6	130.52	6.322	
10,500.0	7,099.2	10,548.2	7,099.2	67.1	67.7	90.00	3,371.9	724.0	825.1	690.9	134.24	6.146	
10,600.0	7,098.7	10,648.2	7,098.7	69.0	69.6	90.00	3,471.9	724.4	825.1	687.1	137.97	5.980	
10,700.0	7,098.3	10,748.2	7,098.3	70.9	71.4	90.00	3,571.9	724.8	825.1	683.4	141.70	5.823	
10,800.0	7,097.8	10,848.2	7,097.8	72.7	73.3	90.00	3,671.9	725.2	825.1	679.7	145.44	5.673	
10,900.0	7,097.3	10,948.2	7,097.3	74.6	75.1	90.00	3,771.9	725.7	825.1	675.9	149.18	5.531	
11,000.0	7,096.8	11,048.2	7,096.8	76.5	77.0	90.00	3,871.9	726.1	825.1	672.2	152.92	5.396	
11,100.0	7,096.4	11,148.2	7,096.4	78.4	78.9	90.00	3,971.9	726.5	825.1	668.4	156.67	5.266	
11,200.0	7,095.9	11,248.2	7,095.9	80.2	80.7	90.00	4,071.9	726.9	825.1	664.7	160.43	5.143	
11,300.0	7,095.4	11,348.2	7,095.4	82.1	82.6	90.00	4,171.9	727.4	825.1	660.9	164.19	5.026	
11,400.0	7,095.0	11,448.2	7,095.0	84.0	84.5	90.00	4,271.9	727.8	825.1	657.2	167.95	4.913	
11,500.0	7,094.5	11,548.2	7,094.5	85.9	86.3	90.00	4,371.9	728.2	825.1	653.4	171.71	4.805	
11,600.0	7,094.0	11,648.2	7,094.0	87.8	88.2	90.00	4,471.9	728.6	825.1	649.7	175.48	4.702	
11,700.0	7,093.5	11,748.2	7,093.5	89.6	90.1	90.00	4,571.9	729.1	825.1	645.9	179.25	4.603	
11,709.2	7,093.5	11,757.4	7,093.5	89.8	90.2	90.00	4,581.1	729.1	825.1	645.6	179.59	4.595 SF	

Company:	Verdad Oil & Gas Corporation	Local Co-ordinate Reference:	Well Meehl 01N-65W-24-3N
Project:	SEC.24-T1N-R65W	TVD Reference:	WELL @ 5038.5ft (RKB - 16.5')
Reference Site:	Meehl 01N-65W-24 Pad Sec.24-T01N-R65W	MD Reference:	WELL @ 5038.5ft (RKB - 16.5')
Site Error:	0.0ft	North Reference:	True
Reference Well:	Meehl 01N-65W-24-3N	Survey Calculation Method:	Minimum Curvature
Well Error:	0.0ft	Output errors are at	2.00 sigma
Reference Wellbore	Wellbore #1	Database:	landmark
Reference Design:	Plan #1 (10-17-14)	Offset TVD Reference:	Offset Datum

Offset Design													Offset Site Error:	0.0 ft
Survey Program: 0-MWD													Offset Well Error:	0.0 ft
Reference		Offset		Semi Major Axis			Distance							Warning
Measured Depth (ft)	Vertical Depth (ft)	Measured Depth (ft)	Vertical Depth (ft)	Reference (ft)	Offset (ft)	Highside Toolface (°)	Offset Wellbore Centre +N/-S (ft)	+E/-W (ft)	Between Centres (ft)	Between Ellipses (ft)	Minimum Separation (ft)	Separation Factor		
0.0	0.0	0.0	0.0	0.0	0.0	89.80	0.3	90.2	90.2					
100.0	100.0	100.0	100.0	0.1	0.1	89.80	0.3	90.2	90.2	89.9	0.22	401.188		
200.0	200.0	200.0	200.0	0.3	0.3	89.80	0.3	90.2	90.2	89.5	0.67	133.729 CC, ES		
300.0	300.0	297.0	297.0	0.6	0.5	90.08	-0.1	91.8	91.8	90.7	1.10	83.106		
400.0	400.0	393.8	393.7	0.8	0.8	90.86	-1.5	96.5	96.7	95.2	1.54	62.700		
500.0	500.0	490.2	489.7	1.0	1.0	92.00	-3.6	104.3	104.9	102.9	2.00	52.504		
600.0	600.0	585.9	584.7	1.2	1.3	93.32	-6.7	115.2	116.4	113.9	2.47	47.087		
700.0	700.0	680.7	678.5	1.5	1.6	94.66	-10.5	128.9	131.1	128.2	2.96	44.265		
800.0	800.0	774.5	770.7	1.7	1.9	95.94	-15.1	145.5	149.2	145.7	3.47	42.971		
900.0	900.0	867.1	861.1	1.9	2.3	97.10	-20.5	164.6	170.4	166.4	4.00	42.629		
1,000.0	1,000.0	959.0	950.2	2.1	2.8	98.12	-26.6	186.4	194.8	190.2	4.54	42.884		
1,100.0	1,100.0	1,055.6	1,043.5	2.4	3.3	98.99	-33.3	210.4	220.4	215.3	5.11	43.162		
1,200.0	1,200.0	1,152.3	1,136.9	2.6	3.8	99.68	-40.0	234.4	246.0	240.4	5.67	43.379		
1,300.0	1,300.0	1,248.9	1,230.2	2.8	4.3	100.25	-46.7	258.4	271.7	265.5	6.24	43.541		
1,400.0	1,400.0	1,345.5	1,323.6	3.0	4.8	100.71	-53.4	282.4	297.4	290.6	6.81	43.666		
1,500.0	1,500.0	1,442.1	1,416.9	3.3	5.4	101.10	-60.1	306.4	323.1	315.7	7.38	43.766		
1,600.0	1,600.0	1,538.7	1,510.3	3.5	5.9	101.44	-66.8	330.4	348.8	340.8	7.95	43.847		
1,700.0	1,700.0	1,635.2	1,603.5	3.7	6.4	-105.84	-73.5	354.3	375.0	367.3	7.65	48.990		
1,800.0	1,799.8	1,731.4	1,696.5	3.9	6.9	-105.78	-80.2	378.2	402.1	394.0	8.09	49.730		
1,900.0	1,899.5	1,827.2	1,789.0	4.0	7.5	-106.09	-86.8	402.0	430.2	421.7	8.53	50.444		
2,000.0	1,998.8	1,922.5	1,881.1	4.2	8.0	-106.97	-93.5	425.7	459.2	450.2	9.00	51.050		
2,100.0	2,098.0	2,017.8	1,973.2	4.5	8.5	-108.01	-100.1	449.3	488.5	479.0	9.49	51.487		
2,200.0	2,197.3	2,113.1	2,065.2	4.7	9.1	-108.94	-106.7	473.0	517.9	507.9	9.99	51.815		
2,300.0	2,296.6	2,208.3	2,157.2	4.9	9.6	-109.77	-113.3	496.6	547.4	536.9	10.51	52.058		
2,400.0	2,395.9	2,303.6	2,249.3	5.2	10.1	-110.51	-119.9	520.3	577.0	565.9	11.05	52.233		
2,500.0	2,495.1	2,398.8	2,341.3	5.4	10.6	-111.18	-126.5	543.9	606.7	595.1	11.59	52.356		
2,600.0	2,594.4	2,494.1	2,433.4	5.7	11.2	-111.79	-133.1	567.6	636.4	624.3	12.14	52.438		
2,700.0	2,693.7	2,589.4	2,525.4	6.0	11.7	-112.35	-139.7	591.2	666.2	653.6	12.69	52.488		
2,800.0	2,793.0	2,684.6	2,617.4	6.2	12.2	-112.86	-146.4	614.9	696.1	682.9	13.26	52.514		
2,900.0	2,892.2	2,779.9	2,709.5	6.5	12.8	-113.32	-153.0	638.6	726.0	712.2	13.82	52.520		
3,000.0	2,991.5	2,875.1	2,801.5	6.8	13.3	-113.75	-159.6	662.2	756.0	741.6	14.40	52.512		
3,100.0	3,090.8	2,970.4	2,893.6	7.1	13.8	-114.15	-166.2	685.9	786.0	771.0	14.97	52.493		
3,200.0	3,190.0	3,065.7	2,985.6	7.4	14.3	-114.51	-172.8	709.5	816.0	800.4	15.55	52.464		
3,300.0	3,289.3	3,160.9	3,077.6	7.7	14.9	-114.86	-179.4	733.2	846.0	829.9	16.14	52.429		
3,400.0	3,388.6	3,256.2	3,169.7	8.0	15.4	-115.17	-186.0	756.8	876.1	859.4	16.72	52.389		
3,500.0	3,487.9	3,351.6	3,261.9	8.3	15.9	-115.47	-192.6	780.5	906.2	888.9	17.31	52.345		
3,600.0	3,587.1	3,490.8	3,397.2	8.6	16.5	-115.93	-201.4	811.9	934.1	916.1	17.96	51.998		
3,700.0	3,686.4	3,633.3	3,537.2	8.9	17.0	-116.58	-208.6	837.4	957.3	938.7	18.61	51.452		
3,800.0	3,786.0	3,779.1	3,681.6	9.1	17.3	-117.30	-213.9	856.6	974.7	955.4	19.22	50.721		
3,900.0	3,885.8	3,927.3	3,829.3	9.3	17.6	-117.74	-217.3	868.8	985.5	965.8	19.76	49.881		
4,000.0	3,985.8	4,076.9	3,978.7	9.5	17.8	-117.91	-218.7	873.6	989.8	969.6	20.23	48.924		
4,100.0	4,085.8	4,184.0	4,085.8	9.7	17.9	89.91	-218.7	873.7	989.9	969.3	20.60	48.042		
4,200.0	4,185.8	4,284.0	4,185.8	9.9	18.0	89.91	-218.7	873.7	989.9	968.9	20.94	47.264		
4,300.0	4,285.8	4,384.0	4,285.8	10.0	18.1	89.91	-218.7	873.7	989.9	968.6	21.29	46.501		
4,400.0	4,385.8	4,484.0	4,385.8	10.2	18.2	89.91	-218.7	873.7	989.9	968.2	21.63	45.754		
4,500.0	4,485.8	4,584.0	4,485.8	10.4	18.4	89.91	-218.7	873.7	989.9	967.9	21.99	45.024		
4,600.0	4,585.8	4,684.0	4,585.8	10.6	18.5	89.91	-218.7	873.7	989.9	967.5	22.34	44.310		
4,700.0	4,685.8	4,784.0	4,685.8	10.8	18.6	89.91	-218.7	873.7	989.9	967.2	22.70	43.612		
4,800.0	4,785.8	4,884.0	4,785.8	11.0	18.7	89.91	-218.7	873.7	989.9	966.8	23.06	42.929		
4,900.0	4,885.8	4,984.0	4,885.8	11.2	18.8	89.91	-218.7	873.7	989.9	966.5	23.42	42.263		
5,000.0	4,985.8	5,084.0	4,985.8	11.4	18.9	89.91	-218.7	873.7	989.9	966.1	23.79	41.611		
5,100.0	5,085.8	5,184.0	5,085.8	11.6	19.1	89.91	-218.7	873.7	989.9	965.7	24.16	40.975		

CC - Min centre to center distance or convergent point, SF - min separation factor, ES - min ellipse separation

Company:	Verdad Oil & Gas Corporation	Local Co-ordinate Reference:	Well Meehl 01N-65W-24-3N
Project:	SEC.24-T1N-R65W	TVD Reference:	WELL @ 5038.5ft (RKB - 16.5')
Reference Site:	Meehl 01N-65W-24 Pad Sec.24-T01N-R65W	MD Reference:	WELL @ 5038.5ft (RKB - 16.5')
Site Error:	0.0ft	North Reference:	True
Reference Well:	Meehl 01N-65W-24-3N	Survey Calculation Method:	Minimum Curvature
Well Error:	0.0ft	Output errors are at	2.00 sigma
Reference Wellbore	Wellbore #1	Database:	landmark
Reference Design:	Plan #1 (10-17-14)	Offset TVD Reference:	Offset Datum

Offset Design Meehl 01N-65W-24 Pad Sec.24-T01N-R65W - Meehl 01N-65W-24-9C - Wellbore #1 - Plan #1 (10-17-1												Offset Site Error:	0.0 ft
Survey Program: 0-MWD												Offset Well Error:	0.0 ft
Reference		Offset		Semi Major Axis			Distance						
Measured Depth (ft)	Vertical Depth (ft)	Measured Depth (ft)	Vertical Depth (ft)	Reference (ft)	Offset (ft)	Highside Toolface (°)	Offset Wellbore Centre +N/-S (ft)	+E/-W (ft)	Between Centres (ft)	Between Ellipses (ft)	Minimum Separation (ft)	Separation Factor	Warning
5,200.0	5,185.8	5,284.0	5,185.8	11.8	19.2	89.91	-218.7	873.7	989.9	965.3	24.53	40.354	
5,300.0	5,285.8	5,384.0	5,285.8	12.0	19.3	89.91	-218.7	873.7	989.9	965.0	24.90	39.747	
5,400.0	5,385.8	5,484.0	5,385.8	12.2	19.4	89.91	-218.7	873.7	989.9	964.6	25.28	39.154	
5,500.0	5,485.8	5,584.0	5,485.8	12.4	19.6	89.91	-218.7	873.7	989.9	964.2	25.66	38.576	
5,600.0	5,585.8	5,684.0	5,585.8	12.6	19.7	89.91	-218.7	873.7	989.9	963.8	26.04	38.011	
5,700.0	5,685.8	5,784.0	5,685.8	12.8	19.8	89.91	-218.7	873.7	989.9	963.4	26.43	37.459	
5,800.0	5,785.8	5,884.0	5,785.8	13.0	20.0	89.91	-218.7	873.7	989.9	963.1	26.81	36.921	
5,900.0	5,885.8	5,984.0	5,885.8	13.2	20.1	89.91	-218.7	873.7	989.9	962.7	27.20	36.395	
6,000.0	5,985.8	6,084.0	5,985.8	13.4	20.2	89.91	-218.7	873.7	989.9	962.3	27.59	35.881	
6,100.0	6,085.8	6,184.0	6,085.8	13.6	20.4	89.91	-218.7	873.7	989.9	961.9	27.98	35.380	
6,200.0	6,185.8	6,284.0	6,185.8	13.8	20.5	89.91	-218.7	873.7	989.9	961.5	28.37	34.890	
6,300.0	6,285.8	6,384.0	6,285.8	14.0	20.7	89.91	-218.7	873.7	989.9	961.1	28.77	34.412	
6,400.0	6,385.8	6,484.0	6,385.8	14.2	20.8	89.91	-218.7	873.7	989.9	960.7	29.16	33.945	
6,500.0	6,485.8	6,584.0	6,485.8	14.4	20.9	89.91	-218.7	873.7	989.9	960.3	29.56	33.488	
6,600.0	6,585.8	6,684.0	6,585.8	14.6	21.1	89.91	-218.7	873.7	989.9	959.9	29.96	33.043	
6,679.8	6,665.3	6,763.4	6,665.3	14.7	21.2	90.00	-218.7	873.7	989.9	959.6	30.21	32.761	
6,700.0	6,685.3	6,783.5	6,685.3	14.8	21.2	90.15	-218.7	873.7	989.9	959.6	30.28	32.691	
6,800.0	6,781.4	6,879.6	6,781.4	14.9	21.4	91.60	-218.7	873.7	990.3	959.8	30.47	32.496	
6,900.0	6,870.6	6,968.7	6,870.6	14.9	21.5	93.65	-218.7	873.7	992.7	962.1	30.57	32.468 SF	
7,000.0	6,949.6	7,071.1	6,972.6	15.0	21.6	96.34	-212.3	873.7	998.5	967.9	30.63	32.604	

Company:	Verdad Oil & Gas Corporation	Local Co-ordinate Reference:	Well Meehl 01N-65W-24-3N
Project:	SEC.24-T1N-R65W	TVD Reference:	WELL @ 5038.5ft (RKB - 16.5')
Reference Site:	Meehl 01N-65W-24 Pad Sec.24-T01N-R65W	MD Reference:	WELL @ 5038.5ft (RKB - 16.5')
Site Error:	0.0ft	North Reference:	True
Reference Well:	Meehl 01N-65W-24-3N	Survey Calculation Method:	Minimum Curvature
Well Error:	0.0ft	Output errors are at	2.00 sigma
Reference Wellbore	Wellbore #1	Database:	landmark
Reference Design:	Plan #1 (10-17-14)	Offset TVD Reference:	Offset Datum

Reference Depths are relative to WELL @ 5038.5ft (RKB - 16.5')

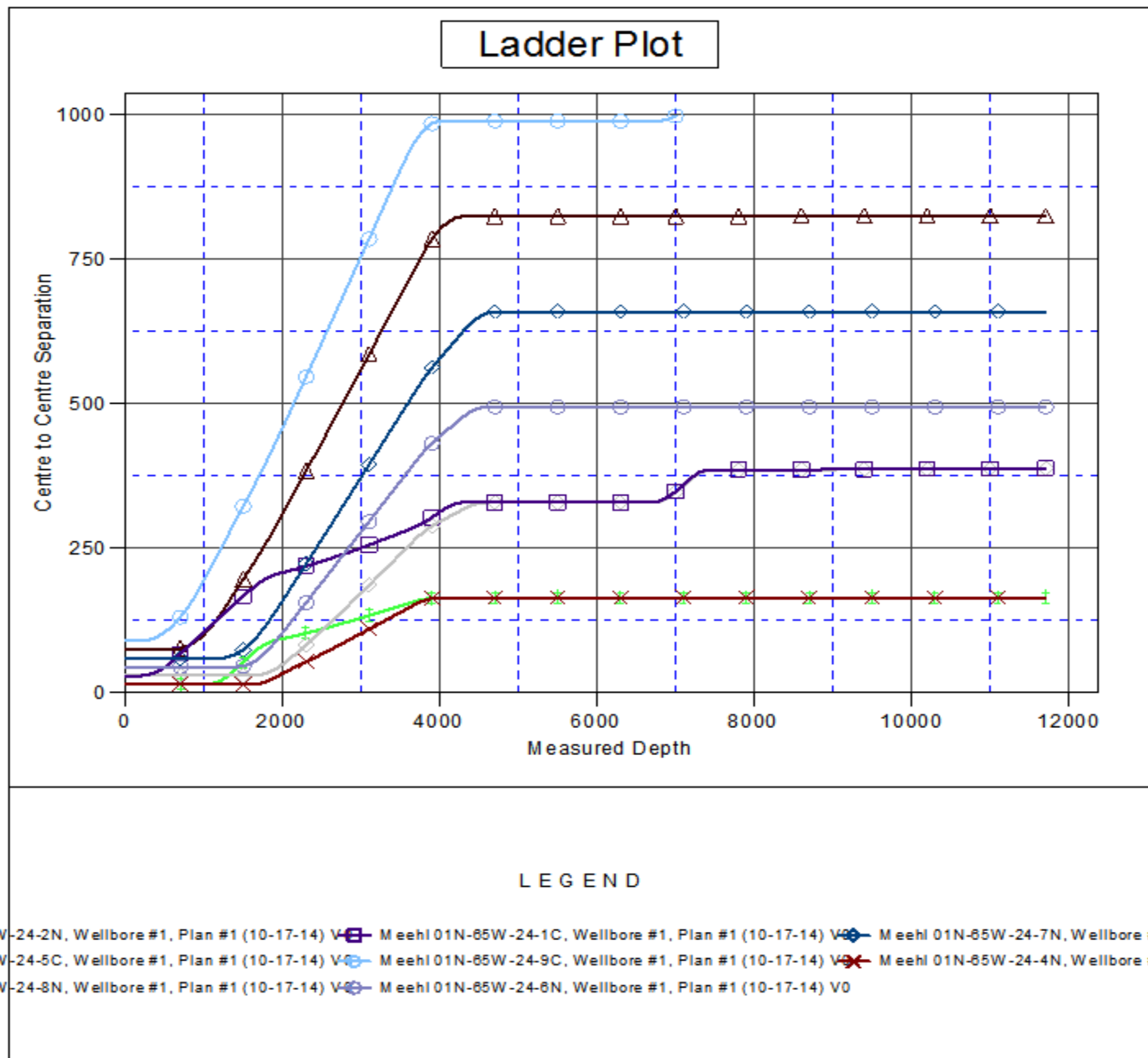
Offset Depths are relative to Offset Datum

Central Meridian is -105.500000 °

Coordinates are relative to: Meehl 01N-65W-24-3N

Coordinate System is US State Plane 1983, Colorado Northern Zone

Grid Convergence at Surface is: 0.58°



Company: Verdad Oil & Gas Corporation
Project: SEC.24-T1N-R65W
Reference Site: Meehl 01N-65W-24 Pad Sec.24-T01N-R65W
Site Error: 0.0ft
Reference Well: Meehl 01N-65W-24-3N
Well Error: 0.0ft
Reference Wellbore: Wellbore #1
Reference Design: Plan #1 (10-17-14)

Local Co-ordinate Reference: Well Meehl 01N-65W-24-3N
TVD Reference: WELL @ 5038.5ft (RKB - 16.5')
MD Reference: WELL @ 5038.5ft (RKB - 16.5')
North Reference: True
Survey Calculation Method: Minimum Curvature
Output errors are at 2.00 sigma
Database: landmark
Offset TVD Reference: Offset Datum

Reference Depths are relative to WELL @ 5038.5ft (RKB - 16.5')

Offset Depths are relative to Offset Datum

Central Meridian is -105.500000 °

Coordinates are relative to: Meehl 01N-65W-24-3N

Coordinate System is US State Plane 1983, Colorado Northern Zone

Grid Convergence at Surface is: 0.58°

