

Verdad Oil & Gas Corporation

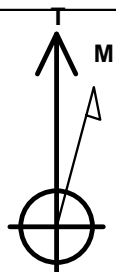
Well Name: **Meehl 01N-65W-24-1C**

Surface Location: Meehl 01N-65W-24 Pad Sec.24-T01N-R65W
 North American Datum 1983 , US State Plane 1983 , Colorado Northern Zone
 Ground Elevation: 5022.0

+N/-S	+E/-W	Northing	Easting	Latitude	Longitude	Slot
0.0	0.0	1255136.20	3249664.19	40.030291	-104.608420	
		RKB - 16.5'	WELL @ 5038.5ft (RKB - 16.5')			

WELLBORE TARGET DETAILS

Name	TVD	+N/-S	+E/-W	Shape
460' Setback BHL	1.0	4585.7	-700.0	Polygon
460' Setback SHL	1.0	190.0	-700.0	Polygon
Sectionline	1.0	-270.0	-700.0	Polygon
SHL 270'FSL & 1563'FEL	1.0	0.0	0.0	Point
BHL 460'FNL & 1980'FEL	7298.5	4585.7	-396.2	Point



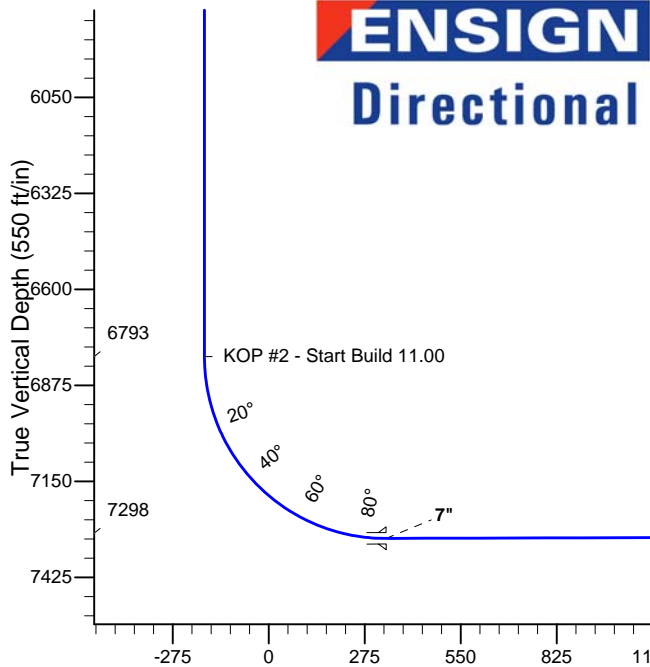
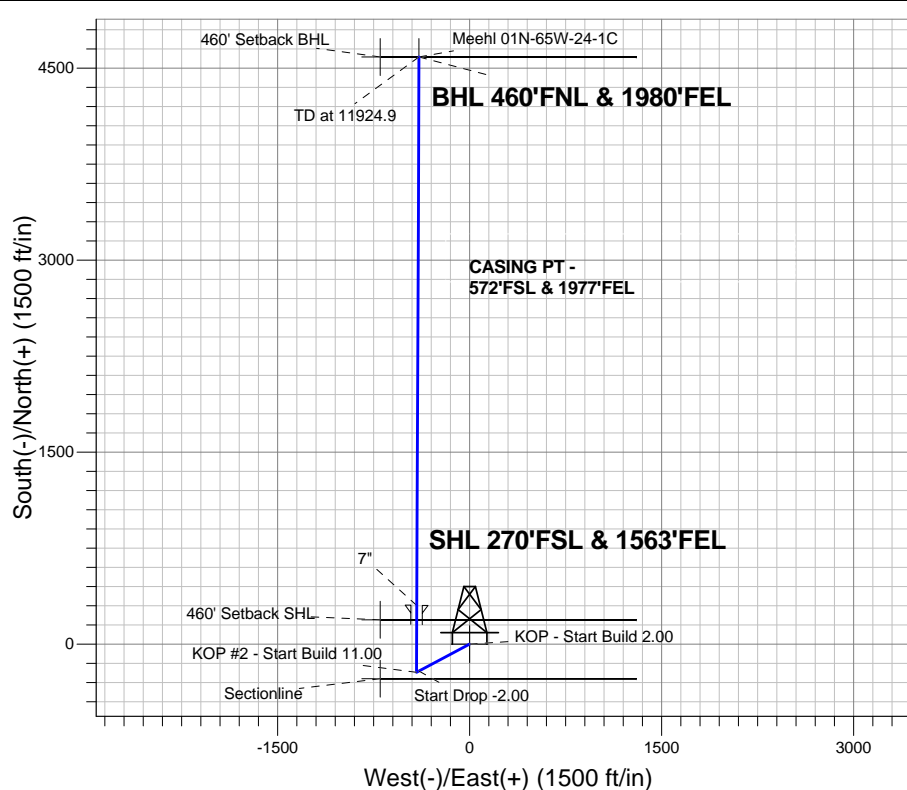
Meehl 01N-65W-24 Pad Sec.24-T01N-R65W
 Meehl 01N-65W-24-1C
 Plan #1 (10-17-14)

Azimuths to True North
 Magnetic North: 8.30°

Magnetic Field
 Strength: 52600.0snT
 Dip Angle: 66.66°
 Date: 10/17/2014
 Model: IGRF2010

ANNOTATIONS

TVD	MD	Annotation
200.0	200.0	KOP - Start Build 2.00
3941.9	3969.6	Start Drop -2.00
6792.6	6821.2	KOP #2 - Start Build 11.00
7298.5	11924.9	TD at 11924.9



SECTION DETAILS

Sec	MD	Inc	Azi	TVD	+N/-S	+E/-W	DLeg	TFace	VSec	Target
1	0.0	0.00	0.00	0.0	0.0	0.0	0.00	0.00	0.0	
2	200.0	0.00	0.00	200.0	0.0	0.0	0.00	0.00	0.0	
3	559.0	7.18	242.09	558.1	-10.5	-19.9	2.00	242.09	-8.8	
4	3969.6	7.18	242.09	3941.9	-210.1	-396.5	0.00	0.00	-175.2	
5	4328.6	0.00	0.00	4300.0	-220.6	-416.4	2.00	180.00	-183.9	
6	6821.2	0.00	0.00	6792.6	-220.6	-416.4	0.00	0.00	-183.9	
7	7641.2	90.20	0.24	7313.5	302.1	-414.2	11.00	0.24	336.6	
8	11924.9	90.20	0.24	7298.5	4585.7	-396.2	0.00	0.00	4602.8	BHL 460'FNL & 1980'FEL

BHL 460'FNL & 1980'FEL

TD at 11924.9

Vertical Section at 355.06° (550 ft/in)



Verdad Oil & Gas Corporation

SEC.24-T1N-R65W

Meehl 01N-65W-24 Pad Sec.24-T01N-R65W

Meehl 01N-65W-24-1C

Wellbore #1

Plan: Plan #1 (10-17-14)

Standard Planning Report

20 October, 2014

Database:	landmark	Local Co-ordinate Reference:	Well Meehl 01N-65W-24-1C
Company:	Verdad Oil & Gas Corporation	TVD Reference:	WELL @ 5038.5ft (RKB - 16.5')
Project:	SEC.24-T1N-R65W	MD Reference:	WELL @ 5038.5ft (RKB - 16.5')
Site:	Meehl 01N-65W-24 Pad Sec.24-T01N-R65W	North Reference:	True
Well:	Meehl 01N-65W-24-1C	Survey Calculation Method:	Minimum Curvature
Wellbore:	Wellbore #1		
Design:	Plan #1 (10-17-14)		

Project	SEC.24-T1N-R65W		
Map System:	US State Plane 1983	System Datum:	Mean Sea Level
Geo Datum:	North American Datum 1983		Using Well Reference Point
Map Zone:	Colorado Northern Zone		Using geodetic scale factor

Site	Meehl 01N-65W-24 Pad Sec.24-T01N-R65W				
Site Position:		Northing:	1,255,136.20ft	Latitude:	40.030291
From:	Lat/Long	Easting:	3,249,664.19ft	Longitude:	-104.608420
Position Uncertainty:	0.0 ft	Slot Radius:	"	Grid Convergence:	0.58 °

Well	Meehl 01N-65W-24-1C					
Well Position	+N-S	0.0 ft	Northing:	1,255,136.19 ft	Latitude:	40.030291
	+E-W	0.0 ft	Easting:	3,249,664.19 ft	Longitude:	-104.608420
Position Uncertainty		0.0 ft	Wellhead Elevation:	ft	Ground Level:	5,022.0 ft

Wellbore	Wellbore #1				
Magnetics	Model Name	Sample Date	Declination (°)	Dip Angle (°)	Field Strength (nT)
	IGRF2010	10/17/2014	8.30	66.66	52,600

Design	Plan #1 (10-17-14)			
Audit Notes:				
Version:	Phase:	PROTOTYPE	Tie On Depth:	0.0
Vertical Section:	Depth From (TVD) (ft)	+N-S (ft)	+E-W (ft)	Direction (°)
	0.0	0.0	0.0	355.06

Plan Sections										
Measured Depth (ft)	Inclination (°)	Azimuth (°)	Vertical Depth (ft)	+N-S (ft)	+E-W (ft)	Dogleg Rate (°/100ft)	Build Rate (°/100ft)	Turn Rate (°/100ft)	TFO (°)	Target
0.0	0.00	0.00	0.0	0.0	0.0	0.00	0.00	0.00	0.00	
200.0	0.00	0.00	200.0	0.0	0.0	0.00	0.00	0.00	0.00	
559.0	7.18	242.09	558.1	-10.5	-19.9	2.00	2.00	0.00	242.09	
3,969.6	7.18	242.09	3,941.9	-210.1	-396.5	0.00	0.00	0.00	0.00	
4,328.6	0.00	0.00	4,300.0	-220.6	-416.4	2.00	-2.00	0.00	180.00	
6,821.2	0.00	0.00	6,792.6	-220.6	-416.4	0.00	0.00	0.00	0.00	
7,641.2	90.20	0.24	7,313.5	302.1	-414.2	11.00	11.00	0.00	0.24	
11,924.9	90.20	0.24	7,298.5	4,585.7	-396.2	0.00	0.00	0.00	0.00	BHL 460'FNL & 196

Database:	landmark	Local Co-ordinate Reference:	Well Meehl 01N-65W-24-1C
Company:	Verdad Oil & Gas Corporation	TVD Reference:	WELL @ 5038.5ft (RKB - 16.5')
Project:	SEC.24-T1N-R65W	MD Reference:	WELL @ 5038.5ft (RKB - 16.5')
Site:	Meehl 01N-65W-24 Pad Sec.24-T01N-R65W	North Reference:	True
Well:	Meehl 01N-65W-24-1C	Survey Calculation Method:	Minimum Curvature
Wellbore:	Wellbore #1		
Design:	Plan #1 (10-17-14)		

Planned Survey										
Measured Depth (ft)	Inclination (°)	Azimuth (°)	Vertical Depth (ft)	+N/-S (ft)	+E/-W (ft)	Vertical Section (ft)	Dogleg Rate (°/100ft)	Build Rate (°/100ft)	Turn Rate (°/100ft)	
0.0	0.00	0.00	0.0	0.0	0.0	0.0	0.00	0.00	0.00	
100.0	0.00	0.00	100.0	0.0	0.0	0.0	0.00	0.00	0.00	
200.0	0.00	0.00	200.0	0.0	0.0	0.0	0.00	0.00	0.00	
KOP - Start Build 2.00										
300.0	2.00	242.09	300.0	-0.8	-1.5	-0.7	2.00	2.00	0.00	
400.0	4.00	242.09	399.8	-3.3	-6.2	-2.7	2.00	2.00	0.00	
500.0	6.00	242.09	499.5	-7.3	-13.9	-6.1	2.00	2.00	0.00	
559.0	7.18	242.09	558.1	-10.5	-19.9	-8.8	2.00	2.00	0.00	
600.0	7.18	242.09	598.7	-12.9	-24.4	-10.8	0.00	0.00	0.00	
700.0	7.18	242.09	698.0	-18.8	-35.4	-15.6	0.00	0.00	0.00	
800.0	7.18	242.09	797.2	-24.6	-46.5	-20.5	0.00	0.00	0.00	
900.0	7.18	242.09	896.4	-30.5	-57.5	-25.4	0.00	0.00	0.00	
1,000.0	7.18	242.09	995.6	-36.3	-68.6	-30.3	0.00	0.00	0.00	
1,100.0	7.18	242.09	1,094.8	-42.2	-79.6	-35.2	0.00	0.00	0.00	
1,200.0	7.18	242.09	1,194.0	-48.0	-90.6	-40.0	0.00	0.00	0.00	
1,300.0	7.18	242.09	1,293.3	-53.9	-101.7	-44.9	0.00	0.00	0.00	
1,400.0	7.18	242.09	1,392.5	-59.7	-112.7	-49.8	0.00	0.00	0.00	
1,500.0	7.18	242.09	1,491.7	-65.6	-123.8	-54.7	0.00	0.00	0.00	
1,600.0	7.18	242.09	1,590.9	-71.4	-134.8	-59.6	0.00	0.00	0.00	
1,700.0	7.18	242.09	1,690.1	-77.3	-145.9	-64.4	0.00	0.00	0.00	
1,800.0	7.18	242.09	1,789.3	-83.1	-156.9	-69.3	0.00	0.00	0.00	
1,900.0	7.18	242.09	1,888.5	-89.0	-168.0	-74.2	0.00	0.00	0.00	
2,000.0	7.18	242.09	1,987.8	-94.8	-179.0	-79.1	0.00	0.00	0.00	
2,100.0	7.18	242.09	2,087.0	-100.7	-190.1	-84.0	0.00	0.00	0.00	
2,200.0	7.18	242.09	2,186.2	-106.5	-201.1	-88.8	0.00	0.00	0.00	
2,300.0	7.18	242.09	2,285.4	-112.4	-212.1	-93.7	0.00	0.00	0.00	
2,400.0	7.18	242.09	2,384.6	-118.2	-223.2	-98.6	0.00	0.00	0.00	
2,500.0	7.18	242.09	2,483.8	-124.1	-234.2	-103.5	0.00	0.00	0.00	
2,600.0	7.18	242.09	2,583.1	-129.9	-245.3	-108.3	0.00	0.00	0.00	
2,700.0	7.18	242.09	2,682.3	-135.8	-256.3	-113.2	0.00	0.00	0.00	
2,800.0	7.18	242.09	2,781.5	-141.6	-267.4	-118.1	0.00	0.00	0.00	
2,900.0	7.18	242.09	2,880.7	-147.5	-278.4	-123.0	0.00	0.00	0.00	
3,000.0	7.18	242.09	2,979.9	-153.3	-289.5	-127.9	0.00	0.00	0.00	
3,100.0	7.18	242.09	3,079.1	-159.2	-300.5	-132.7	0.00	0.00	0.00	
3,200.0	7.18	242.09	3,178.4	-165.1	-311.5	-137.6	0.00	0.00	0.00	
3,300.0	7.18	242.09	3,277.6	-170.9	-322.6	-142.5	0.00	0.00	0.00	
3,400.0	7.18	242.09	3,376.8	-176.8	-333.6	-147.4	0.00	0.00	0.00	
3,500.0	7.18	242.09	3,476.0	-182.6	-344.7	-152.3	0.00	0.00	0.00	
3,600.0	7.18	242.09	3,575.2	-188.5	-355.7	-157.1	0.00	0.00	0.00	
3,700.0	7.18	242.09	3,674.4	-194.3	-366.8	-162.0	0.00	0.00	0.00	
3,800.0	7.18	242.09	3,773.6	-200.2	-377.8	-166.9	0.00	0.00	0.00	
3,900.0	7.18	242.09	3,872.9	-206.0	-388.9	-171.8	0.00	0.00	0.00	
3,969.6	7.18	242.09	3,941.9	-210.1	-396.5	-175.2	0.00	0.00	0.00	
Start Drop -2.00										
4,000.0	6.57	242.09	3,972.1	-211.8	-399.8	-176.6	2.00	-2.00	0.00	
4,100.0	4.57	242.09	4,071.6	-216.3	-408.3	-180.4	2.00	-2.00	0.00	
4,200.0	2.57	242.09	4,171.4	-219.2	-413.8	-182.8	2.00	-2.00	0.00	
4,300.0	0.57	242.09	4,271.4	-220.5	-416.3	-183.9	2.00	-2.00	0.00	
4,328.6	0.00	0.00	4,300.0	-220.6	-416.4	-183.9	2.00	-2.00	0.00	
4,400.0	0.00	0.00	4,371.4	-220.6	-416.4	-183.9	0.00	0.00	0.00	
4,500.0	0.00	0.00	4,471.4	-220.6	-416.4	-183.9	0.00	0.00	0.00	
4,600.0	0.00	0.00	4,571.4	-220.6	-416.4	-183.9	0.00	0.00	0.00	
4,700.0	0.00	0.00	4,671.4	-220.6	-416.4	-183.9	0.00	0.00	0.00	
4,800.0	0.00	0.00	4,771.4	-220.6	-416.4	-183.9	0.00	0.00	0.00	

Database:	landmark	Local Co-ordinate Reference:	Well Meehl 01N-65W-24-1C
Company:	Verdad Oil & Gas Corporation	TVD Reference:	WELL @ 5038.5ft (RKB - 16.5')
Project:	SEC.24-T1N-R65W	MD Reference:	WELL @ 5038.5ft (RKB - 16.5')
Site:	Meehl 01N-65W-24 Pad Sec.24-T01N-R65W	North Reference:	True
Well:	Meehl 01N-65W-24-1C	Survey Calculation Method:	Minimum Curvature
Wellbore:	Wellbore #1		
Design:	Plan #1 (10-17-14)		

Planned Survey									
Measured Depth (ft)	Inclination (°)	Azimuth (°)	Vertical Depth (ft)	+N/-S (ft)	+E/-W (ft)	Vertical Section (ft)	Dogleg Rate (°/100ft)	Build Rate (°/100ft)	Turn Rate (°/100ft)
4,900.0	0.00	0.00	4,871.4	-220.6	-416.4	-183.9	0.00	0.00	0.00
5,000.0	0.00	0.00	4,971.4	-220.6	-416.4	-183.9	0.00	0.00	0.00
5,100.0	0.00	0.00	5,071.4	-220.6	-416.4	-183.9	0.00	0.00	0.00
5,200.0	0.00	0.00	5,171.4	-220.6	-416.4	-183.9	0.00	0.00	0.00
5,300.0	0.00	0.00	5,271.4	-220.6	-416.4	-183.9	0.00	0.00	0.00
5,400.0	0.00	0.00	5,371.4	-220.6	-416.4	-183.9	0.00	0.00	0.00
5,500.0	0.00	0.00	5,471.4	-220.6	-416.4	-183.9	0.00	0.00	0.00
5,600.0	0.00	0.00	5,571.4	-220.6	-416.4	-183.9	0.00	0.00	0.00
5,700.0	0.00	0.00	5,671.4	-220.6	-416.4	-183.9	0.00	0.00	0.00
5,800.0	0.00	0.00	5,771.4	-220.6	-416.4	-183.9	0.00	0.00	0.00
5,900.0	0.00	0.00	5,871.4	-220.6	-416.4	-183.9	0.00	0.00	0.00
6,000.0	0.00	0.00	5,971.4	-220.6	-416.4	-183.9	0.00	0.00	0.00
6,100.0	0.00	0.00	6,071.4	-220.6	-416.4	-183.9	0.00	0.00	0.00
6,200.0	0.00	0.00	6,171.4	-220.6	-416.4	-183.9	0.00	0.00	0.00
6,300.0	0.00	0.00	6,271.4	-220.6	-416.4	-183.9	0.00	0.00	0.00
6,400.0	0.00	0.00	6,371.4	-220.6	-416.4	-183.9	0.00	0.00	0.00
6,500.0	0.00	0.00	6,471.4	-220.6	-416.4	-183.9	0.00	0.00	0.00
6,600.0	0.00	0.00	6,571.4	-220.6	-416.4	-183.9	0.00	0.00	0.00
6,700.0	0.00	0.00	6,671.4	-220.6	-416.4	-183.9	0.00	0.00	0.00
6,800.0	0.00	0.00	6,771.4	-220.6	-416.4	-183.9	0.00	0.00	0.00
6,821.2	0.00	0.00	6,792.6	-220.6	-416.4	-183.9	0.00	0.00	0.00
KOP #2 - Start Build 11.00									
6,900.0	8.67	0.24	6,871.1	-214.7	-416.4	-178.0	11.00	11.00	0.00
7,000.0	19.67	0.24	6,967.9	-190.2	-416.3	-153.7	11.00	11.00	0.00
7,100.0	30.67	0.24	7,058.3	-147.8	-416.1	-111.4	11.00	11.00	0.00
7,200.0	41.67	0.24	7,138.9	-88.8	-415.8	-52.7	11.00	11.00	0.00
7,300.0	52.67	0.24	7,206.7	-15.6	-415.5	20.2	11.00	11.00	0.00
7,400.0	63.67	0.24	7,259.4	69.2	-415.2	104.7	11.00	11.00	0.00
7,500.0	74.67	0.24	7,294.9	162.5	-414.8	197.6	11.00	11.00	0.00
7,600.0	85.67	0.24	7,312.0	260.9	-414.4	295.6	11.00	11.00	0.00
7,641.2	90.20	0.24	7,313.5	302.1	-414.2	336.6	11.00	11.00	0.00
7"									
7,700.0	90.20	0.24	7,313.2	360.9	-414.0	395.2	0.00	0.00	0.00
7,800.0	90.20	0.24	7,312.9	460.9	-413.5	494.8	0.00	0.00	0.00
7,900.0	90.20	0.24	7,312.5	560.9	-413.1	594.3	0.00	0.00	0.00
8,000.0	90.20	0.24	7,312.2	660.9	-412.7	693.9	0.00	0.00	0.00
8,100.0	90.20	0.24	7,311.9	760.9	-412.3	793.5	0.00	0.00	0.00
8,200.0	90.20	0.24	7,311.5	860.9	-411.9	893.1	0.00	0.00	0.00
8,300.0	90.20	0.24	7,311.2	960.9	-411.4	992.7	0.00	0.00	0.00
8,400.0	90.20	0.24	7,310.8	1,060.9	-411.0	1,092.3	0.00	0.00	0.00
8,500.0	90.20	0.24	7,310.5	1,160.9	-410.6	1,191.9	0.00	0.00	0.00
8,600.0	90.20	0.24	7,310.1	1,260.9	-410.2	1,291.5	0.00	0.00	0.00
8,700.0	90.20	0.24	7,309.8	1,360.9	-409.7	1,391.1	0.00	0.00	0.00
8,800.0	90.20	0.24	7,309.4	1,460.9	-409.3	1,490.7	0.00	0.00	0.00
8,900.0	90.20	0.24	7,309.1	1,560.9	-408.9	1,590.3	0.00	0.00	0.00
9,000.0	90.20	0.24	7,308.7	1,660.9	-408.5	1,689.9	0.00	0.00	0.00
9,100.0	90.20	0.24	7,308.4	1,760.9	-408.1	1,789.4	0.00	0.00	0.00
9,200.0	90.20	0.24	7,308.0	1,860.9	-407.6	1,889.0	0.00	0.00	0.00
9,300.0	90.20	0.24	7,307.7	1,960.9	-407.2	1,988.6	0.00	0.00	0.00
9,400.0	90.20	0.24	7,307.3	2,060.8	-406.8	2,088.2	0.00	0.00	0.00
9,500.0	90.20	0.24	7,307.0	2,160.8	-406.4	2,187.8	0.00	0.00	0.00
9,600.0	90.20	0.24	7,306.6	2,260.8	-406.0	2,287.4	0.00	0.00	0.00
9,700.0	90.20	0.24	7,306.3	2,360.8	-405.5	2,387.0	0.00	0.00	0.00
9,800.0	90.20	0.24	7,305.9	2,460.8	-405.1	2,486.6	0.00	0.00	0.00

Database:	landmark	Local Co-ordinate Reference:	Well Meehl 01N-65W-24-1C
Company:	Verdad Oil & Gas Corporation	TVD Reference:	WELL @ 5038.5ft (RKB - 16.5')
Project:	SEC.24-T1N-R65W	MD Reference:	WELL @ 5038.5ft (RKB - 16.5')
Site:	Meehl 01N-65W-24 Pad Sec.24-T01N-R65W	North Reference:	True
Well:	Meehl 01N-65W-24-1C	Survey Calculation Method:	Minimum Curvature
Wellbore:	Wellbore #1		
Design:	Plan #1 (10-17-14)		

Planned Survey										
Measured Depth (ft)	Inclination (°)	Azimuth (°)	Vertical Depth (ft)	+N/-S (ft)	+E/-W (ft)	Vertical Section (ft)	Dogleg Rate (°/100ft)	Build Rate (°/100ft)	Turn Rate (°/100ft)	
9,900.0	90.20	0.24	7,305.6	2,560.8	-404.7	2,586.2	0.00	0.00	0.00	
10,000.0	90.20	0.24	7,305.2	2,660.8	-404.3	2,685.8	0.00	0.00	0.00	
10,100.0	90.20	0.24	7,304.9	2,760.8	-403.9	2,785.4	0.00	0.00	0.00	
10,200.0	90.20	0.24	7,304.5	2,860.8	-403.4	2,884.9	0.00	0.00	0.00	
10,300.0	90.20	0.24	7,304.2	2,960.8	-403.0	2,984.5	0.00	0.00	0.00	
10,400.0	90.20	0.24	7,303.8	3,060.8	-402.6	3,084.1	0.00	0.00	0.00	
10,500.0	90.20	0.24	7,303.5	3,160.8	-402.2	3,183.7	0.00	0.00	0.00	
10,600.0	90.20	0.24	7,303.1	3,260.8	-401.8	3,283.3	0.00	0.00	0.00	
10,700.0	90.20	0.24	7,302.8	3,360.8	-401.3	3,382.9	0.00	0.00	0.00	
10,800.0	90.20	0.24	7,302.4	3,460.8	-400.9	3,482.5	0.00	0.00	0.00	
10,900.0	90.20	0.24	7,302.1	3,560.8	-400.5	3,582.1	0.00	0.00	0.00	
11,000.0	90.20	0.24	7,301.7	3,660.8	-400.1	3,681.7	0.00	0.00	0.00	
11,100.0	90.20	0.24	7,301.4	3,760.8	-399.7	3,781.3	0.00	0.00	0.00	
11,200.0	90.20	0.24	7,301.0	3,860.8	-399.2	3,880.9	0.00	0.00	0.00	
11,300.0	90.20	0.24	7,300.7	3,960.8	-398.8	3,980.4	0.00	0.00	0.00	
11,400.0	90.20	0.24	7,300.3	4,060.8	-398.4	4,080.0	0.00	0.00	0.00	
11,500.0	90.20	0.24	7,300.0	4,160.8	-398.0	4,179.6	0.00	0.00	0.00	
11,600.0	90.20	0.24	7,299.6	4,260.8	-397.5	4,279.2	0.00	0.00	0.00	
11,700.0	90.20	0.24	7,299.3	4,360.8	-397.1	4,378.8	0.00	0.00	0.00	
11,800.0	90.20	0.24	7,298.9	4,460.8	-396.7	4,478.4	0.00	0.00	0.00	
11,900.0	90.20	0.24	7,298.6	4,560.8	-396.3	4,578.0	0.00	0.00	0.00	
11,924.9	90.20	0.24	7,298.5	4,585.7	-396.2	4,602.8	0.00	0.00	0.00	

Targets										
Target Name	Dip Angle (°)	Dip Dir. (°)	TVD (ft)	+N/-S (ft)	+E/-W (ft)	Northing (ft)	Easting (ft)	Latitude	Longitude	
Sectionline - hit/miss target - Shape	0.00	0.00	1.0	-270.0	-700.0	1,254,859.18	3,248,966.97	40.029550	-104.610920	
- plan misses by 750.3ft at 1.0ft MD (1.0 TVD, 0.0 N, 0.0 E)										
- Polygon										
Point 1			1.0	0.0	0.0	1,254,859.18	3,248,966.97			
Point 2			1.0	0.0	2,000.0	1,254,879.29	3,250,966.79			
460' Setback BHL - plan misses by 4638.8ft at 1.0ft MD (1.0 TVD, 0.0 N, 0.0 E)	0.00	0.00	1.0	4,585.7	-700.0	1,259,714.45	3,248,918.15	40.042879	-104.610920	
- Polygon										
Point 1			1.0	0.0	0.0	1,259,714.45	3,248,918.15			
Point 2			1.0	0.0	2,000.0	1,259,734.56	3,250,917.97			
SHL 270'FSL & 1563' - plan hits target - Point	0.00	0.00	1.0	0.0	0.0	1,255,136.20	3,249,664.19	40.030291	-104.608420	
460' Setback SHL - plan misses by 725.3ft at 1.0ft MD (1.0 TVD, 0.0 N, 0.0 E)	0.00	0.00	1.0	190.0	-700.0	1,255,319.14	3,248,962.34	40.030813	-104.610920	
- Polygon										
Point 1			1.0	0.0	0.0	1,255,319.14	3,248,962.34			
Point 2			1.0	0.0	2,000.0	1,255,339.25	3,250,962.16			
BHL 460'FNL & 1980' - plan hits target - Point	0.00	0.00	7,298.5	4,585.7	-396.2	1,259,717.49	3,249,221.94	40.042879	-104.609835	

Database:	landmark	Local Co-ordinate Reference:	Well Meehl 01N-65W-24-1C
Company:	Verdad Oil & Gas Corporation	TVD Reference:	WELL @ 5038.5ft (RKB - 16.5')
Project:	SEC.24-T1N-R65W	MD Reference:	WELL @ 5038.5ft (RKB - 16.5')
Site:	Meehl 01N-65W-24 Pad Sec.24-T01N-R65W	North Reference:	True
Well:	Meehl 01N-65W-24-1C	Survey Calculation Method:	Minimum Curvature
Wellbore:	Wellbore #1		
Design:	Plan #1 (10-17-14)		

Casing Points

Measured Depth (ft)	Vertical Depth (ft)	Name	Casing Diameter (")	Hole Diameter (")
7,641.2	7,313.5	7"	7	7-1/2

Plan Annotations

Measured Depth (ft)	Vertical Depth (ft)	Local Coordinates		Comment
		+N/-S (ft)	+E/-W (ft)	
200.0	200.0	0.0	0.0	KOP - Start Build 2.00
3,969.6	3,941.9	-210.1	-396.5	Start Drop -2.00
6,821.2	6,792.6	-220.6	-416.4	KOP #2 - Start Build 11.00
11,924.9	7,298.5	4,585.7	-396.2	TD at 11924.9



Directional

Verdad Oil & Gas Corporation

SEC.24-T1N-R65W

Meehl 01N-65W-24 Pad Sec.24-T01N-R65W

Meehl 01N-65W-24-1C

Wellbore #1

Plan #1 (10-17-14)

Anticollision Report

20 October, 2014

Company:	Verdad Oil & Gas Corporation	Local Co-ordinate Reference:	Well Meehl 01N-65W-24-1C
Project:	SEC.24-T1N-R65W	TVD Reference:	WELL @ 5038.5ft (RKB - 16.5')
Reference Site:	Meehl 01N-65W-24 Pad Sec.24-T01N-R65W	MD Reference:	WELL @ 5038.5ft (RKB - 16.5')
Site Error:	0.0ft	North Reference:	True
Reference Well:	Meehl 01N-65W-24-1C	Survey Calculation Method:	Minimum Curvature
Well Error:	0.0ft	Output errors are at	2.00 sigma
Reference Wellbore	Wellbore #1	Database:	landmark
Reference Design:	Plan #1 (10-17-14)	Offset TVD Reference:	Offset Datum

Reference	Plan #1 (10-17-14)		
Filter type:	NO GLOBAL FILTER: Using user defined selection & filtering criteria		
Interpolation Method:	MD Interval 100.0ft	Error Model:	ISCWSA
Depth Range:	Unlimited	Scan Method:	Closest Approach 3D
Results Limited by:	Maximum center-center distance of 1,000.0ft	Error Surface:	Elliptical Conic
Warning Levels Evaluated at:	2.00 Sigma		

Survey Tool Program	Date	10/20/2014		
From (ft)	To (ft)	Survey (Wellbore)	Tool Name	Description
0.0	11,924.9	Plan #1 (10-17-14) (Wellbore #1)	MWD	MWD - Standard

Summary						
Site Name	Reference Measured Depth (ft)	Offset Measured Depth (ft)	Distance Between Centres (ft)	Distance Between Ellipses (ft)	Separation Factor	Warning
Meehl 01N-65W-24 Pad Sec.24-T01N-R65W						
Meehl 01N-65W-24-2N - Wellbore #1 - Plan #1 (10-17-14)	200.0	200.0	15.1	14.5	22.433	CC, ES
Meehl 01N-65W-24-2N - Wellbore #1 - Plan #1 (10-17-14)	11,924.9	11,716.4	263.3	139.2	2.121	SF
Meehl 01N-65W-24-3N - Wellbore #1 - Plan #1 (10-17-14)	200.0	200.0	30.0	29.3	44.438	CC, ES
Meehl 01N-65W-24-3N - Wellbore #1 - Plan #1 (10-17-14)	11,924.9	11,707.9	388.6	232.2	2.485	SF
Meehl 01N-65W-24-4N - Wellbore #1 - Plan #1 (10-17-14)	200.0	200.0	45.1	44.4	66.866	CC, ES
Meehl 01N-65W-24-4N - Wellbore #1 - Plan #1 (10-17-14)	11,924.9	11,705.2	535.8	368.0	3.193	SF
Meehl 01N-65W-24-5C - Wellbore #1 - Plan #1 (10-17-14)	200.0	200.0	60.2	59.5	89.292	CC, ES
Meehl 01N-65W-24-5C - Wellbore #1 - Plan #1 (10-17-14)	11,924.9	11,910.0	660.2	480.6	3.675	SF
Meehl 01N-65W-24-6N - Wellbore #1 - Plan #1 (10-17-14)	200.0	200.0	75.1	74.4	111.303	CC, ES
Meehl 01N-65W-24-6N - Wellbore #1 - Plan #1 (10-17-14)	11,924.9	11,718.0	850.2	675.2	4.857	SF
Meehl 01N-65W-24-7N - Wellbore #1 - Plan #1 (10-17-14)	200.0	200.0	90.2	89.5	133.729	CC, ES
Meehl 01N-65W-24-7N - Wellbore #1 - Plan #1 (10-17-14)	7,000.0	6,974.1	995.3	964.6	32.380	SF
Meehl 01N-65W-24-8N - Wellbore #1 - Plan #1 (10-17-14)	200.0	200.0	105.0	104.3	155.740	CC, ES
Meehl 01N-65W-24-8N - Wellbore #1 - Plan #1 (10-17-14)	900.0	881.3	178.2	174.4	46.965	SF
Meehl 01N-65W-24-9C - Wellbore #1 - Plan #1 (10-17-14)	200.0	200.0	120.1	119.5	178.167	CC, ES
Meehl 01N-65W-24-9C - Wellbore #1 - Plan #1 (10-17-14)	900.0	847.7	254.0	250.0	64.536	SF

Offset Design	Meehl 01N-65W-24 Pad Sec.24-T01N-R65W - Meehl 01N-65W-24-2N - Wellbore #1 - Plan #1 (10-17-14)											Offset Site Error:	0.0ft
Survey Program:	0-MWD											Offset Well Error:	0.0ft
Reference	Offset		Semi Major Axis			Distance							Warning
Measured Depth (ft)	Vertical Depth (ft)	Measured Depth (ft)	Vertical Depth (ft)	Reference (ft)	Offset (ft)	Highside Toolface (°)	Offset Wellbore Centre +N/-S (ft)	+E/-W (ft)	Between Centres (ft)	Between Ellipses (ft)	Minimum Separation (ft)	Separation Factor	Warning
0.0	0.0	0.0	0.0	0.0	0.0	88.65	0.4	15.1	15.1	15.1	0.00	N/A	
100.0	100.0	100.0	100.0	0.1	0.1	88.65	0.4	15.1	15.1	14.9	0.22	67.298	
200.0	200.0	200.0	200.0	0.3	0.3	88.65	0.4	15.1	15.1	14.5	0.67	22.433	CC, ES
300.0	300.0	300.0	300.0	0.5	0.6	-156.10	0.4	15.1	16.7	15.6	1.11	15.010	
400.0	399.8	399.8	399.8	0.8	0.8	-161.70	0.4	15.1	21.6	20.0	1.55	13.887	
500.0	499.5	499.5	499.5	1.0	1.0	-166.90	0.4	15.1	30.0	28.0	2.01	14.941	
600.0	598.7	598.7	598.7	1.3	1.2	-170.58	0.4	15.1	41.7	39.2	2.46	16.949	
700.0	698.0	698.0	698.0	1.6	1.5	-172.75	0.4	15.1	54.0	51.1	2.91	18.592	
800.0	797.2	797.2	797.2	1.9	1.7	-174.11	0.4	15.1	66.5	63.1	3.36	19.788	
900.0	896.4	896.4	896.4	2.2	1.9	-175.04	0.4	15.1	78.9	75.1	3.81	20.693	
1,000.0	995.6	995.6	995.6	2.6	2.1	-175.72	0.4	15.1	91.4	87.1	4.27	21.399	
1,100.0	1,094.8	1,098.2	1,098.2	2.9	2.3	-176.00	-0.7	13.8	102.3	97.6	4.71	21.719	

CC - Min centre to center distance or convergent point, SF - min separation factor, ES - min ellipse separation

Company:	Verdad Oil & Gas Corporation	Local Co-ordinate Reference:	Well Meehl 01N-65W-24-1C
Project:	SEC.24-T1N-R65W	TVD Reference:	WELL @ 5038.5ft (RKB - 16.5')
Reference Site:	Meehl 01N-65W-24 Pad Sec.24-T01N-R65W	MD Reference:	WELL @ 5038.5ft (RKB - 16.5')
Site Error:	0.0ft	North Reference:	True
Reference Well:	Meehl 01N-65W-24-1C	Survey Calculation Method:	Minimum Curvature
Well Error:	0.0ft	Output errors are at	2.00 sigma
Reference Wellbore	Wellbore #1	Database:	landmark
Reference Design:	Plan #1 (10-17-14)	Offset TVD Reference:	Offset Datum

Offset Design													Offset Site Error:	0.0ft	
Survey Program: 0-MWD													Offset Well Error:		0.0ft
Reference		Offset		Semi Major Axis			Distance						Warning		
Measured Depth (ft)	Vertical Depth (ft)	Measured Depth (ft)	Vertical Depth (ft)	Reference (ft)	Offset (ft)	Highside Toolface (°)	Offset Wellbore Centre +N/-S (ft)	+E/-W (ft)	Between Centres (ft)	Between Ellipses (ft)	Minimum Separation (ft)	Separation Factor			
1,200.0	1,194.0	1,201.6	1,201.5	3.2	2.5	-175.70	-4.2	9.7	109.7	104.6	5.13	21.379			
1,300.0	1,293.3	1,305.4	1,304.8	3.5	2.7	-174.91	-10.0	2.6	113.7	108.2	5.57	20.414			
1,400.0	1,392.5	1,408.1	1,406.7	3.9	3.0	-173.66	-18.1	-7.1	114.5	108.5	6.02	19.008			
1,416.6	1,408.9	1,424.6	1,423.2	3.9	3.0	-173.44	-19.4	-8.7	114.5	108.4	6.10	18.771			
1,500.0	1,491.7	1,508.0	1,505.8	4.2	3.2	-172.32	-26.4	-17.1	114.5	108.0	6.48	17.667			
1,600.0	1,590.9	1,608.0	1,604.9	4.5	3.5	-170.98	-34.7	-27.2	114.6	107.6	6.95	16.485			
1,700.0	1,690.1	1,707.9	1,704.0	4.9	3.8	-169.64	-43.1	-37.2	114.7	107.3	7.43	15.439			
1,800.0	1,789.3	1,807.9	1,803.1	5.2	4.1	-168.31	-51.4	-47.3	114.9	107.0	7.92	14.509			
1,900.0	1,888.5	1,907.9	1,902.2	5.5	4.4	-166.98	-59.8	-57.4	115.2	106.8	8.42	13.679			
2,000.0	1,987.8	2,007.8	2,001.3	5.8	4.7	-165.66	-68.1	-67.4	115.5	106.6	8.93	12.933			
2,100.0	2,087.0	2,107.8	2,100.4	6.2	5.0	-164.34	-76.5	-77.5	115.9	106.5	9.46	12.262			
2,200.0	2,186.2	2,207.8	2,199.5	6.5	5.3	-163.04	-84.8	-87.5	116.4	106.4	9.99	11.655			
2,300.0	2,285.4	2,307.7	2,298.7	6.8	5.6	-161.75	-93.1	-97.6	116.9	106.4	10.53	11.105			
2,400.0	2,384.6	2,407.7	2,397.8	7.2	5.9	-160.46	-101.5	-107.7	117.5	106.4	11.08	10.605			
2,500.0	2,483.8	2,507.7	2,496.9	7.5	6.2	-159.20	-109.8	-117.7	118.1	106.5	11.64	10.149			
2,600.0	2,583.1	2,607.6	2,596.0	7.8	6.5	-157.94	-118.2	-127.8	118.8	106.6	12.21	9.731			
2,700.0	2,682.3	2,707.6	2,695.1	8.2	6.9	-156.70	-126.5	-137.8	119.5	106.8	12.79	9.349			
2,800.0	2,781.5	2,807.5	2,794.2	8.5	7.2	-155.48	-134.9	-147.9	120.3	107.0	13.37	8.998			
2,900.0	2,880.7	2,907.5	2,893.3	8.8	7.5	-154.28	-143.2	-157.9	121.2	107.2	13.97	8.675			
3,000.0	2,979.9	3,007.5	2,992.4	9.1	7.8	-153.09	-151.5	-168.0	122.1	107.5	14.58	8.377			
3,100.0	3,079.1	3,107.4	3,091.5	9.5	8.2	-151.92	-159.9	-178.1	123.1	107.9	15.19	8.103			
3,200.0	3,178.4	3,207.4	3,190.6	9.8	8.5	-150.76	-168.2	-188.1	124.1	108.3	15.81	7.849			
3,300.0	3,277.6	3,307.4	3,289.7	10.1	8.8	-149.63	-176.6	-198.2	125.1	108.7	16.44	7.613			
3,400.0	3,376.8	3,407.3	3,388.8	10.5	9.2	-148.52	-184.9	-208.2	126.2	109.2	17.07	7.395			
3,500.0	3,476.0	3,507.3	3,487.9	10.8	9.5	-147.42	-193.3	-218.3	127.4	109.7	17.71	7.193			
3,600.0	3,575.2	3,607.3	3,587.0	11.1	9.8	-146.35	-201.6	-228.4	128.6	110.2	18.36	7.004			
3,700.0	3,674.4	3,705.4	3,684.4	11.5	10.1	-145.51	-209.4	-237.8	130.3	111.3	18.96	6.869			
3,800.0	3,773.6	3,802.2	3,780.8	11.8	10.3	-145.65	-215.2	-244.7	134.1	114.7	19.43	6.903			
3,900.0	3,872.9	3,900.0	3,878.4	12.1	10.5	-146.76	-218.9	-249.2	140.4	120.6	19.80	7.089			
4,000.0	3,972.1	3,994.8	3,973.1	12.4	10.7	-148.60	-220.5	-251.1	148.9	128.9	20.07	7.420			
4,100.0	4,071.6	4,093.3	4,071.6	12.7	10.8	-150.47	-220.5	-251.2	157.2	136.9	20.27	7.755			
4,200.0	4,171.4	4,193.1	4,171.4	12.8	11.0	-151.61	-220.5	-251.2	162.7	142.2	20.51	7.931			
4,300.0	4,271.4	4,293.0	4,271.4	13.0	11.2	-152.08	-220.5	-251.2	165.1	144.3	20.78	7.945			
4,400.0	4,371.4	4,393.0	4,371.4	13.1	11.3	89.98	-220.5	-251.2	165.2	144.1	21.10	7.831			
4,500.0	4,471.4	4,493.0	4,471.4	13.3	11.5	89.98	-220.5	-251.2	165.2	143.8	21.44	7.704			
4,600.0	4,571.4	4,593.0	4,571.4	13.4	11.7	89.98	-220.5	-251.2	165.2	143.4	21.80	7.581			
4,700.0	4,671.4	4,693.0	4,671.4	13.5	11.8	89.98	-220.5	-251.2	165.2	143.1	22.15	7.460			
4,800.0	4,771.4	4,793.0	4,771.4	13.7	12.0	89.98	-220.5	-251.2	165.2	142.7	22.51	7.341			
4,900.0	4,871.4	4,893.0	4,871.4	13.8	12.2	89.98	-220.5	-251.2	165.2	142.4	22.87	7.225			
5,000.0	4,971.4	4,993.0	4,971.4	14.0	12.4	89.98	-220.5	-251.2	165.2	142.0	23.23	7.112			
5,100.0	5,071.4	5,093.0	5,071.4	14.2	12.5	89.98	-220.5	-251.2	165.2	141.6	23.60	7.002			
5,200.0	5,171.4	5,193.0	5,171.4	14.3	12.7	89.98	-220.5	-251.2	165.2	141.3	23.97	6.894			
5,300.0	5,271.4	5,293.0	5,271.4	14.5	12.9	89.98	-220.5	-251.2	165.2	140.9	24.34	6.788			
5,400.0	5,371.4	5,393.0	5,371.4	14.6	13.1	89.98	-220.5	-251.2	165.2	140.5	24.71	6.686			
5,500.0	5,471.4	5,493.0	5,471.4	14.8	13.3	89.98	-220.5	-251.2	165.2	140.1	25.09	6.585			
5,600.0	5,571.4	5,593.0	5,571.4	14.9	13.4	89.98	-220.5	-251.2	165.2	139.8	25.47	6.487			
5,700.0	5,671.4	5,693.0	5,671.4	15.1	13.6	89.98	-220.5	-251.2	165.2	139.4	25.85	6.391			
5,800.0	5,771.4	5,793.0	5,771.4	15.3	13.8	89.98	-220.5	-251.2	165.2	139.0	26.24	6.298			
5,900.0	5,871.4	5,893.0	5,871.4	15.4	14.0	89.98	-220.5	-251.2	165.2	138.6	26.62	6.206			
6,000.0	5,971.4	5,993.0	5,971.4	15.6	14.2	89.98	-220.5	-251.2	165.2	138.2	27.01	6.117			
6,100.0	6,071.4	6,093.0	6,071.4	15.8	14.4	89.98	-220.5	-251.2	165.2	137.8	27.40	6.030			
6,200.0	6,171.4	6,193.0	6,171.4	16.0	14.6	89.98	-220.5	-251.2	165.2	137.4	27.79	5.945			

CC - Min centre to center distance or convergent point, SF - min separation factor, ES - min ellipse separation

Company:	Verdad Oil & Gas Corporation	Local Co-ordinate Reference:	Well Meehl 01N-65W-24-1C
Project:	SEC.24-T1N-R65W	TVD Reference:	WELL @ 5038.5ft (RKB - 16.5')
Reference Site:	Meehl 01N-65W-24 Pad Sec.24-T01N-R65W	MD Reference:	WELL @ 5038.5ft (RKB - 16.5')
Site Error:	0.0ft	North Reference:	True
Reference Well:	Meehl 01N-65W-24-1C	Survey Calculation Method:	Minimum Curvature
Well Error:	0.0ft	Output errors are at	2.00 sigma
Reference Wellbore	Wellbore #1	Database:	landmark
Reference Design:	Plan #1 (10-17-14)	Offset TVD Reference:	Offset Datum

Offset Design													Offset Site Error:	0.0ft	
Survey Program: 0-MWD													Offset Well Error:		0.0ft
Reference		Offset		Semi Major Axis			Distance						Warning		
Measured Depth (ft)	Vertical Depth (ft)	Measured Depth (ft)	Vertical Depth (ft)	Reference (ft)	Offset (ft)	Highside Toolface (°)	Offset Wellbore Centre +N/-S (ft)	+E/-W (ft)	Between Centres (ft)	Between Ellipses (ft)	Minimum Separation (ft)	Separation Factor			
6,300.0	6,271.4	6,293.0	6,271.4	16.1	14.8	89.98	-220.5	-251.2	165.2	137.0	28.18	5.862			
6,400.0	6,371.4	6,393.0	6,371.4	16.3	15.0	89.98	-220.5	-251.2	165.2	136.6	28.58	5.781			
6,500.0	6,471.4	6,493.0	6,471.4	16.5	15.2	89.98	-220.5	-251.2	165.2	136.2	28.97	5.702			
6,600.0	6,571.4	6,593.0	6,571.4	16.6	15.4	89.98	-220.5	-251.2	165.2	135.8	29.37	5.625			
6,634.9	6,606.3	6,627.9	6,606.3	16.7	15.4	89.92	-220.4	-251.2	165.2	135.7	29.51	5.600			
6,700.0	6,671.4	6,692.3	6,670.4	16.8	15.5	87.97	-214.7	-251.2	165.4	135.7	29.63	5.581			
6,800.0	6,771.4	6,786.2	6,761.5	17.0	15.6	80.34	-192.5	-251.1	168.0	138.4	29.56	5.684			
6,900.0	6,871.1	6,872.2	6,840.2	17.2	15.7	69.65	-158.1	-250.9	177.6	148.2	29.41	6.038			
7,000.0	6,967.9	6,954.1	6,908.9	17.3	15.7	60.73	-113.7	-250.7	191.7	162.5	29.18	6.569			
7,100.0	7,058.3	7,033.0	6,967.8	17.3	15.7	53.74	-61.2	-250.5	207.6	179.0	28.63	7.251			
7,200.0	7,138.9	7,109.7	7,016.7	17.3	15.7	48.47	-2.3	-250.3	223.2	195.6	27.63	8.079			
7,300.0	7,206.7	7,184.6	7,055.7	17.3	15.8	44.64	61.6	-250.0	237.0	210.7	26.30	9.013			
7,400.0	7,259.4	7,258.3	7,084.8	17.3	15.8	42.01	129.2	-249.7	247.9	223.0	24.90	9.957			
7,500.0	7,294.9	7,331.2	7,103.8	17.4	16.1	40.38	199.5	-249.4	255.4	231.5	23.87	10.701			
7,600.0	7,312.0	7,400.0	7,112.7	17.8	16.5	39.66	267.7	-249.1	259.0	235.5	23.54	11.003			
7,700.0	7,313.2	7,491.5	7,113.4	18.4	17.3	39.58	359.2	-248.7	259.3	235.0	24.29	10.674			
7,800.0	7,312.9	7,591.5	7,112.9	19.2	18.2	39.57	459.2	-248.3	259.4	233.9	25.50	10.172			
7,900.0	7,312.5	7,691.5	7,112.5	20.3	19.3	39.55	559.2	-247.9	259.5	232.6	26.92	9.638			
8,000.0	7,312.2	7,791.5	7,112.0	21.4	20.5	39.53	659.2	-247.5	259.6	231.0	28.52	9.100			
8,100.0	7,311.9	7,891.5	7,111.5	22.7	21.8	39.51	759.2	-247.1	259.7	229.4	30.28	8.576			
8,200.0	7,311.5	7,991.5	7,111.1	24.0	23.2	39.50	859.2	-246.6	259.8	227.6	32.16	8.077			
8,300.0	7,311.2	8,091.5	7,110.6	25.4	24.6	39.48	959.2	-246.2	259.9	225.7	34.15	7.609			
8,400.0	7,310.8	8,191.5	7,110.1	26.9	26.1	39.46	1,059.2	-245.8	259.9	223.7	36.23	7.176			
8,500.0	7,310.5	8,291.5	7,109.6	28.4	27.7	39.44	1,159.2	-245.4	260.0	221.7	38.38	6.776			
8,600.0	7,310.1	8,391.5	7,109.2	30.0	29.3	39.43	1,259.2	-245.0	260.1	219.5	40.59	6.409			
8,700.0	7,309.8	8,491.5	7,108.7	31.6	30.9	39.41	1,359.2	-244.5	260.2	217.4	42.85	6.073			
8,800.0	7,309.4	8,591.5	7,108.2	33.2	32.6	39.39	1,459.2	-244.1	260.3	215.2	45.16	5.765			
8,900.0	7,309.1	8,691.5	7,107.8	34.9	34.3	39.38	1,559.2	-243.7	260.4	212.9	47.50	5.482			
9,000.0	7,308.7	8,791.5	7,107.3	36.6	36.0	39.36	1,659.2	-243.3	260.5	210.6	49.88	5.223			
9,100.0	7,308.4	8,891.5	7,106.8	38.3	37.8	39.34	1,759.2	-242.9	260.6	208.3	52.28	4.984			
9,200.0	7,308.0	8,991.5	7,106.3	40.0	39.5	39.32	1,859.2	-242.4	260.7	206.0	54.71	4.765			
9,300.0	7,307.7	9,091.5	7,105.9	41.8	41.3	39.31	1,959.2	-242.0	260.8	203.6	57.16	4.563			
9,400.0	7,307.3	9,191.5	7,105.4	43.5	43.0	39.29	2,059.2	-241.6	260.9	201.3	59.62	4.376			
9,500.0	7,307.0	9,291.5	7,104.9	45.3	44.8	39.27	2,159.2	-241.2	261.0	198.9	62.10	4.202			
9,600.0	7,306.6	9,391.5	7,104.5	47.1	46.6	39.26	2,259.2	-240.8	261.1	196.5	64.60	4.042			
9,700.0	7,306.3	9,491.5	7,104.0	48.9	48.4	39.24	2,359.2	-240.3	261.2	194.1	67.10	3.892			
9,800.0	7,305.9	9,591.5	7,103.5	50.7	50.3	39.22	2,459.2	-239.9	261.3	191.7	69.62	3.753			
9,900.0	7,305.6	9,691.5	7,103.0	52.5	52.1	39.21	2,559.2	-239.5	261.4	189.2	72.14	3.623			
10,000.0	7,305.2	9,791.5	7,102.6	54.3	53.9	39.19	2,659.2	-239.1	261.5	186.8	74.67	3.501			
10,100.0	7,304.9	9,891.5	7,102.1	56.1	55.7	39.17	2,759.2	-238.7	261.5	184.3	77.21	3.387			
10,200.0	7,304.5	9,991.5	7,101.6	58.0	57.6	39.15	2,859.2	-238.2	261.6	181.9	79.76	3.280			
10,300.0	7,304.2	10,091.5	7,101.2	59.8	59.4	39.14	2,959.2	-237.8	261.7	179.4	82.31	3.180			
10,400.0	7,303.8	10,191.5	7,100.7	61.6	61.3	39.12	3,059.2	-237.4	261.8	177.0	84.87	3.085			
10,500.0	7,303.5	10,291.5	7,100.2	63.5	63.1	39.10	3,159.2	-237.0	261.9	174.5	87.43	2.996			
10,600.0	7,303.1	10,391.5	7,099.7	65.3	65.0	39.09	3,259.2	-236.6	262.0	172.0	89.99	2.912			
10,700.0	7,302.8	10,491.5	7,099.3	67.2	66.8	39.07	3,359.2	-236.1	262.1	169.6	92.56	2.832			
10,800.0	7,302.4	10,591.5	7,098.8	69.0	68.7	39.05	3,459.2	-235.7	262.2	167.1	95.13	2.756			
10,900.0	7,302.1	10,691.5	7,098.3	70.9	70.6	39.04	3,559.2	-235.3	262.3	164.6	97.70	2.685			
11,000.0	7,301.7	10,791.5	7,097.9	72.8	72.4	39.02	3,659.2	-234.9	262.4	162.1	100.28	2.617			
11,100.0	7,301.4	10,891.5	7,097.4	74.6	74.3	39.00	3,759.2	-234.5	262.5	159.6	102.86	2.552			
11,200.0	7,301.0	10,991.5	7,096.9	76.5	76.2	38.99	3,859.2	-234.0	262.6	157.2	105.44	2.490			
11,300.0	7,300.7	11,091.5	7,096.4	78.3	78.1	38.97	3,959.2	-233.6	262.7	154.7	108.02	2.432			

CC - Min centre to center distance or convergent point, SF - min separation factor, ES - min ellipse separation

Company:	Verdad Oil & Gas Corporation	Local Co-ordinate Reference:	Well Meehl 01N-65W-24-1C
Project:	SEC.24-T1N-R65W	TVD Reference:	WELL @ 5038.5ft (RKB - 16.5')
Reference Site:	Meehl 01N-65W-24 Pad Sec.24-T01N-R65W	MD Reference:	WELL @ 5038.5ft (RKB - 16.5')
Site Error:	0.0ft	North Reference:	True
Reference Well:	Meehl 01N-65W-24-1C	Survey Calculation Method:	Minimum Curvature
Well Error:	0.0ft	Output errors are at	2.00 sigma
Reference Wellbore	Wellbore #1	Database:	landmark
Reference Design:	Plan #1 (10-17-14)	Offset TVD Reference:	Offset Datum

Offset Design													Offset Site Error:	0.0 ft	
Survey Program: 0-MWD													Offset Well Error:		0.0 ft
Reference		Offset		Semi Major Axis			Distance						Warning		
Measured Depth (ft)	Vertical Depth (ft)	Measured Depth (ft)	Vertical Depth (ft)	Reference (ft)	Offset (ft)	Highside Toolface (°)	Offset Wellbore Centre +N/-S (ft)	+E/-W (ft)	Between Centres (ft)	Between Ellipses (ft)	Minimum Separation (ft)	Separation Factor			
11,400.0	7,300.3	11,191.5	7,096.0	80.2	79.9	38.95	4,059.2	-233.2	262.8	152.2	110.60	2.376			
11,500.0	7,300.0	11,291.5	7,095.5	82.1	81.8	38.93	4,159.2	-232.8	262.9	149.7	113.19	2.322			
11,600.0	7,299.6	11,391.5	7,095.0	84.0	83.7	38.92	4,259.2	-232.4	263.0	147.2	115.77	2.271			
11,700.0	7,299.3	11,491.5	7,094.6	85.8	85.6	38.90	4,359.2	-231.9	263.1	144.7	118.36	2.223			
11,800.0	7,298.9	11,591.5	7,094.1	87.7	87.5	38.88	4,459.2	-231.5	263.2	142.2	120.94	2.176			
11,900.0	7,298.6	11,691.5	7,093.6	89.6	89.3	38.87	4,559.2	-231.1	263.3	139.7	123.53	2.131			
11,924.9	7,298.5	11,716.4	7,093.5	90.1	89.7	38.86	4,584.0	-231.0	263.3	139.2	124.12	2.121 SF			

Company:	Verdad Oil & Gas Corporation	Local Co-ordinate Reference:	Well Meehl 01N-65W-24-1C
Project:	SEC.24-T1N-R65W	TVD Reference:	WELL @ 5038.5ft (RKB - 16.5')
Reference Site:	Meehl 01N-65W-24 Pad Sec.24-T01N-R65W	MD Reference:	WELL @ 5038.5ft (RKB - 16.5')
Site Error:	0.0ft	North Reference:	True
Reference Well:	Meehl 01N-65W-24-1C	Survey Calculation Method:	Minimum Curvature
Well Error:	0.0ft	Output errors are at	2.00 sigma
Reference Wellbore	Wellbore #1	Database:	landmark
Reference Design:	Plan #1 (10-17-14)	Offset TVD Reference:	Offset Datum

Offset Design													Offset Site Error:	0.0ft	
Survey Program: 0-MWD													Offset Well Error:		0.0ft
Reference				Offset			Semi Major Axis			Distance				Warning	
Measured Depth (ft)	Vertical Depth (ft)	Measured Depth (ft)	Vertical Depth (ft)	Reference (ft)	Offset (ft)	Highside Toolface (°)	Offset Wellbore Centre +N/-S (ft)	+E/-W (ft)	Between Centres (ft)	Between Ellipses (ft)	Minimum Separation (ft)	Separation Factor			
0.0	0.0	0.0	0.0	0.0	0.0	90.01	0.0	30.0	30.0						
100.0	100.0	100.0	100.0	0.1	0.1	90.01	0.0	30.0	30.0	29.7	0.22	133.313			
200.0	200.0	200.0	200.0	0.3	0.3	90.01	0.0	30.0	30.0	29.3	0.67	44.438	CC, ES		
300.0	300.0	300.0	300.0	0.5	0.6	-153.55	0.0	30.0	31.5	30.4	1.11	28.325			
400.0	399.8	399.8	399.8	0.8	0.8	-157.20	0.0	30.0	36.3	34.7	1.55	23.336			
500.0	499.5	499.5	499.5	1.0	1.0	-161.50	0.0	30.0	44.4	42.4	2.01	22.128			
600.0	598.7	598.7	598.7	1.3	1.2	-165.34	0.0	30.0	55.9	53.4	2.46	22.687			
700.0	698.0	698.0	698.0	1.6	1.5	-168.01	0.0	30.0	68.0	65.1	2.91	23.361			
800.0	797.2	797.2	797.2	1.9	1.7	-169.86	0.0	30.0	80.3	76.9	3.37	23.862			
900.0	896.4	896.4	896.4	2.2	1.9	-171.22	0.0	30.0	92.6	88.8	3.82	24.248			
1,000.0	995.6	995.6	995.6	2.6	2.1	-172.26	0.0	30.0	105.0	100.7	4.28	24.551			
1,100.0	1,094.8	1,094.8	1,094.8	2.9	2.3	-173.08	0.0	30.0	117.4	112.7	4.73	24.796			
1,200.0	1,194.0	1,194.0	1,194.0	3.2	2.6	-173.75	0.0	30.0	129.8	124.6	5.19	24.997			
1,300.0	1,293.3	1,293.3	1,293.3	3.5	2.8	-174.29	0.0	30.0	142.3	136.6	5.65	25.165			
1,400.0	1,392.5	1,392.5	1,392.5	3.9	3.0	-174.76	0.0	30.0	154.7	148.6	6.11	25.308			
1,500.0	1,491.7	1,491.7	1,491.7	4.2	3.2	-175.15	0.0	30.0	167.1	160.6	6.57	25.430			
1,600.0	1,590.9	1,590.9	1,590.9	4.5	3.5	-175.48	0.0	30.0	179.6	172.6	7.03	25.536			
1,700.0	1,690.1	1,695.1	1,695.1	4.9	3.7	-175.50	-1.4	29.2	190.9	183.4	7.48	25.525			
1,800.0	1,789.3	1,800.3	1,800.1	5.2	3.9	-174.82	-6.2	26.7	199.4	191.5	7.90	25.227			
1,900.0	1,888.5	1,905.7	1,905.1	5.5	4.1	-173.50	-14.4	22.4	205.1	196.7	8.34	24.583			
2,000.0	1,987.8	2,007.6	2,006.3	5.8	4.3	-171.74	-25.0	16.8	208.7	199.9	8.79	23.729			
2,100.0	2,087.0	2,107.3	2,105.3	6.2	4.5	-170.03	-35.6	11.2	212.3	203.0	9.26	22.928			
2,200.0	2,186.2	2,207.1	2,204.3	6.5	4.7	-168.38	-46.2	5.6	216.0	206.3	9.74	22.189			
2,300.0	2,285.4	2,306.8	2,303.4	6.8	4.9	-166.79	-56.9	0.0	220.0	209.8	10.23	21.506			
2,400.0	2,384.6	2,406.6	2,402.4	7.2	5.2	-165.26	-67.5	-5.6	224.1	213.4	10.73	20.875			
2,500.0	2,483.8	2,506.3	2,501.4	7.5	5.4	-163.78	-78.1	-11.2	228.4	217.1	11.25	20.293			
2,600.0	2,583.1	2,606.0	2,600.4	7.8	5.7	-162.35	-88.7	-16.8	232.8	221.0	11.78	19.754			
2,700.0	2,682.3	2,705.8	2,699.4	8.2	6.0	-160.98	-99.3	-22.4	237.3	225.0	12.32	19.256			
2,800.0	2,781.5	2,805.5	2,798.4	8.5	6.3	-159.66	-109.9	-28.0	242.0	229.1	12.88	18.796			
2,900.0	2,880.7	2,905.2	2,897.4	8.8	6.5	-158.39	-120.6	-33.6	246.8	233.4	13.44	18.369			
3,000.0	2,979.9	3,005.0	2,996.5	9.1	6.8	-157.17	-131.2	-39.2	251.7	237.7	14.00	17.975			
3,100.0	3,079.1	3,104.7	3,095.5	9.5	7.1	-156.00	-141.8	-44.9	256.8	242.2	14.58	17.609			
3,200.0	3,178.4	3,204.5	3,194.5	9.8	7.4	-154.88	-152.4	-50.5	261.9	246.7	15.17	17.269			
3,300.0	3,277.6	3,304.2	3,293.5	10.1	7.7	-153.79	-163.0	-56.1	267.1	251.4	15.76	16.955			
3,400.0	3,376.8	3,403.9	3,392.5	10.5	8.0	-152.75	-173.6	-61.7	272.5	256.1	16.35	16.662			
3,500.0	3,476.0	3,503.7	3,491.5	10.8	8.3	-151.75	-184.2	-67.3	277.9	260.9	16.95	16.390			
3,600.0	3,575.2	3,603.4	3,590.5	11.1	8.6	-150.79	-194.9	-72.9	283.4	265.8	17.56	16.136			
3,700.0	3,674.4	3,700.0	3,686.4	11.5	8.9	-149.92	-205.0	-78.2	289.0	270.9	18.15	15.923			
3,800.0	3,773.6	3,797.2	3,783.2	11.8	9.1	-149.53	-212.9	-82.4	295.8	277.2	18.67	15.847			
3,900.0	3,872.9	3,892.6	3,878.4	12.1	9.3	-149.71	-217.9	-85.0	304.1	285.0	19.13	15.897			
4,000.0	3,972.1	3,987.6	3,973.4	12.4	9.5	-150.42	-220.1	-86.2	313.7	294.2	19.53	16.061			
4,100.0	4,071.6	4,085.8	4,071.6	12.7	9.7	-151.32	-220.2	-86.2	322.1	302.3	19.85	16.227			
4,200.0	4,171.4	4,185.6	4,171.4	12.8	9.8	-151.90	-220.2	-86.2	327.6	307.4	20.17	16.245			
4,300.0	4,271.4	4,285.6	4,271.4	13.0	10.0	-152.14	-220.2	-86.2	330.0	309.6	20.48	16.117			
4,400.0	4,371.4	4,385.6	4,371.4	13.1	10.2	89.93	-220.2	-86.2	330.2	309.4	20.81	15.862			
4,500.0	4,471.4	4,485.6	4,471.4	13.3	10.4	89.93	-220.2	-86.2	330.2	309.0	21.17	15.596			
4,600.0	4,571.4	4,585.6	4,571.4	13.4	10.6	89.93	-220.2	-86.2	330.2	308.6	21.53	15.336			
4,700.0	4,671.4	4,685.6	4,671.4	13.5	10.8	89.93	-220.2	-86.2	330.2	308.3	21.89	15.083			
4,800.0	4,771.4	4,785.6	4,771.4	13.7	11.0	89.93	-220.2	-86.2	330.2	307.9	22.26	14.835			
4,900.0	4,871.4	4,885.6	4,871.4	13.8	11.2	89.93	-220.2	-86.2	330.2	307.5	22.62	14.594			
5,000.0	4,971.4	4,985.6	4,971.4	14.0	11.3	89.93	-220.2	-86.2	330.2	307.2	22.99	14.359			
5,100.0	5,071.4	5,085.6	5,071.4	14.2	11.5	89.93	-220.2	-86.2	330.2	306.8	23.37	14.129			

CC - Min centre to center distance or convergent point, SF - min separation factor, ES - min ellipse separation

Company:	Verdad Oil & Gas Corporation	Local Co-ordinate Reference:	Well Meehl 01N-65W-24-1C
Project:	SEC.24-T1N-R65W	TVD Reference:	WELL @ 5038.5ft (RKB - 16.5')
Reference Site:	Meehl 01N-65W-24 Pad Sec.24-T01N-R65W	MD Reference:	WELL @ 5038.5ft (RKB - 16.5')
Site Error:	0.0ft	North Reference:	True
Reference Well:	Meehl 01N-65W-24-1C	Survey Calculation Method:	Minimum Curvature
Well Error:	0.0ft	Output errors are at	2.00 sigma
Reference Wellbore	Wellbore #1	Database:	landmark
Reference Design:	Plan #1 (10-17-14)	Offset TVD Reference:	Offset Datum

Offset Design													Offset Site Error:	0.0ft	
Survey Program: 0-MWD													Offset Well Error:		0.0ft
Reference		Offset		Semi Major Axis			Distance						Warning		
Measured Depth (ft)	Vertical Depth (ft)	Measured Depth (ft)	Vertical Depth (ft)	Reference (ft)	Offset (ft)	Highside Toolface (°)	Offset Wellbore Centre +N/-S (ft)	+E/-W (ft)	Between Centres (ft)	Between Ellipses (ft)	Minimum Separation (ft)	Separation Factor			
5,200.0	5,171.4	5,185.6	5,171.4	14.3	11.7	89.93	-220.2	-86.2	330.2	306.4	23.74	13.905			
5,300.0	5,271.4	5,285.6	5,271.4	14.5	11.9	89.93	-220.2	-86.2	330.2	306.0	24.12	13.687			
5,400.0	5,371.4	5,385.6	5,371.4	14.6	12.1	89.93	-220.2	-86.2	330.2	305.7	24.50	13.474			
5,500.0	5,471.4	5,485.6	5,471.4	14.8	12.3	89.93	-220.2	-86.2	330.2	305.3	24.89	13.267			
5,600.0	5,571.4	5,585.6	5,571.4	14.9	12.5	89.93	-220.2	-86.2	330.2	304.9	25.27	13.064			
5,700.0	5,671.4	5,685.6	5,671.4	15.1	12.7	89.93	-220.2	-86.2	330.2	304.5	25.66	12.867			
5,800.0	5,771.4	5,785.6	5,771.4	15.3	12.9	89.93	-220.2	-86.2	330.2	304.1	26.05	12.674			
5,900.0	5,871.4	5,885.6	5,871.4	15.4	13.1	89.93	-220.2	-86.2	330.2	303.7	26.44	12.487			
6,000.0	5,971.4	5,985.6	5,971.4	15.6	13.3	89.93	-220.2	-86.2	330.2	303.3	26.83	12.304			
6,100.0	6,071.4	6,085.6	6,071.4	15.8	13.5	89.93	-220.2	-86.2	330.2	302.9	27.23	12.125			
6,200.0	6,171.4	6,185.6	6,171.4	16.0	13.7	89.93	-220.2	-86.2	330.2	302.5	27.63	11.951			
6,300.0	6,271.4	6,285.6	6,271.4	16.1	13.9	89.93	-220.2	-86.2	330.2	302.1	28.02	11.782			
6,400.0	6,371.4	6,385.6	6,371.4	16.3	14.2	89.93	-220.2	-86.2	330.2	301.7	28.42	11.616			
6,500.0	6,471.4	6,485.6	6,471.4	16.5	14.4	89.93	-220.2	-86.2	330.2	301.3	28.82	11.454			
6,600.0	6,571.4	6,585.6	6,571.4	16.6	14.6	89.93	-220.2	-86.2	330.2	300.9	29.23	11.296			
6,629.5	6,600.8	6,615.0	6,600.8	16.7	14.6	89.92	-220.1	-86.2	330.2	300.8	29.34	11.251			
6,700.0	6,671.4	6,684.7	6,670.2	16.8	14.7	88.93	-214.4	-86.2	330.2	300.7	29.56	11.173			
6,800.0	6,771.4	6,778.5	6,761.2	17.0	14.9	85.09	-192.2	-86.1	331.7	302.0	29.70	11.167			
6,900.0	6,871.1	6,864.3	6,839.8	17.2	14.9	79.34	-157.9	-86.0	336.7	307.0	29.72	11.330			
7,000.0	6,967.9	6,950.0	6,911.5	17.3	15.0	74.01	-111.3	-85.8	344.4	314.8	29.63	11.624			
7,100.0	7,058.3	7,025.0	6,967.4	17.3	15.0	69.73	-61.3	-85.6	353.5	324.1	29.45	12.005			
7,200.0	7,138.9	7,100.0	7,015.4	17.3	15.0	66.06	-3.8	-85.3	362.9	333.8	29.14	12.455			
7,300.0	7,206.7	7,176.5	7,055.4	17.3	15.2	63.06	61.3	-85.1	371.5	342.7	28.78	12.907			
7,400.0	7,259.4	7,250.0	7,084.5	17.3	15.4	60.90	128.8	-84.8	378.6	350.1	28.49	13.285			
7,500.0	7,294.9	7,323.0	7,103.7	17.4	15.8	59.50	199.1	-84.5	383.4	354.9	28.49	13.456			
7,600.0	7,312.0	7,400.0	7,113.1	17.8	16.3	58.85	275.5	-84.2	385.8	356.8	28.95	13.325			
7,609.7	7,312.7	7,400.0	7,113.1	17.8	16.3	58.85	275.5	-84.2	385.8	356.8	29.00	13.305			
7,700.0	7,313.2	7,483.1	7,113.4	18.4	17.0	58.81	358.5	-83.8	385.9	355.9	30.04	12.845			
7,800.0	7,312.9	7,583.1	7,112.9	19.2	18.0	58.80	458.5	-83.4	386.0	354.4	31.62	12.206			
7,900.0	7,312.5	7,683.1	7,112.5	20.3	19.0	58.78	558.5	-83.0	386.0	352.6	33.46	11.537			
8,000.0	7,312.2	7,783.1	7,112.0	21.4	20.3	58.77	658.5	-82.5	386.1	350.6	35.52	10.869			
8,100.0	7,311.9	7,883.1	7,111.5	22.7	21.6	58.75	758.5	-82.1	386.2	348.4	37.77	10.224			
8,200.0	7,311.5	7,983.1	7,111.1	24.0	23.0	58.74	858.5	-81.7	386.2	346.1	40.17	9.614			
8,300.0	7,311.2	8,083.1	7,110.6	25.4	24.4	58.72	958.5	-81.3	386.3	343.6	42.71	9.046			
8,400.0	7,310.8	8,183.1	7,110.1	26.9	26.0	58.71	1,058.5	-80.9	386.4	341.0	45.34	8.521			
8,500.0	7,310.5	8,283.1	7,109.6	28.4	27.5	58.69	1,158.5	-80.4	386.4	338.4	48.07	8.039			
8,600.0	7,310.1	8,383.1	7,109.2	30.0	29.2	58.67	1,258.5	-80.0	386.5	335.6	50.87	7.598			
8,700.0	7,309.8	8,483.1	7,108.7	31.6	30.8	58.66	1,358.5	-79.6	386.5	332.8	53.73	7.194			
8,800.0	7,309.4	8,583.1	7,108.2	33.2	32.5	58.64	1,458.5	-79.2	386.6	330.0	56.65	6.825			
8,900.0	7,309.1	8,683.1	7,107.8	34.9	34.2	58.63	1,558.5	-78.8	386.7	327.1	59.61	6.487			
9,000.0	7,308.7	8,783.1	7,107.3	36.6	35.9	58.61	1,658.5	-78.4	386.7	324.1	62.61	6.177			
9,100.0	7,308.4	8,883.1	7,106.8	38.3	37.6	58.60	1,758.5	-77.9	386.8	321.2	65.64	5.893			
9,200.0	7,308.0	8,983.1	7,106.3	40.0	39.4	58.58	1,858.5	-77.5	386.9	318.2	68.70	5.631			
9,300.0	7,307.7	9,083.1	7,105.9	41.8	41.2	58.57	1,958.5	-77.1	386.9	315.1	71.79	5.390			
9,400.0	7,307.3	9,183.1	7,105.4	43.5	43.0	58.55	2,058.5	-76.7	387.0	312.1	74.90	5.167			
9,500.0	7,307.0	9,283.1	7,104.9	45.3	44.8	58.53	2,158.5	-76.3	387.1	309.0	78.02	4.961			
9,600.0	7,306.6	9,383.1	7,104.5	47.1	46.6	58.52	2,258.5	-75.8	387.1	305.9	81.17	4.769			
9,700.0	7,306.3	9,483.1	7,104.0	48.9	48.4	58.50	2,358.5	-75.4	387.2	302.9	84.32	4.591			
9,800.0	7,305.9	9,583.1	7,103.5	50.7	50.2	58.49	2,458.5	-75.0	387.2	299.7	87.50	4.426			
9,900.0	7,305.6	9,683.1	7,103.0	52.5	52.0	58.47	2,558.5	-74.6	387.3	296.6	90.68	4.271			
10,000.0	7,305.2	9,783.1	7,102.6	54.3	53.9	58.46	2,658.5	-74.2	387.4	293.5	93.87	4.127			
10,100.0	7,304.9	9,883.1	7,102.1	56.1	55.7	58.44	2,758.5	-73.7	387.4	290.4	97.07	3.991			

CC - Min centre to center distance or convergent point, SF - min separation factor, ES - min ellipse separation

Company:	Verdad Oil & Gas Corporation	Local Co-ordinate Reference:	Well Meehl 01N-65W-24-1C
Project:	SEC.24-T1N-R65W	TVD Reference:	WELL @ 5038.5ft (RKB - 16.5')
Reference Site:	Meehl 01N-65W-24 Pad Sec.24-T01N-R65W	MD Reference:	WELL @ 5038.5ft (RKB - 16.5')
Site Error:	0.0ft	North Reference:	True
Reference Well:	Meehl 01N-65W-24-1C	Survey Calculation Method:	Minimum Curvature
Well Error:	0.0ft	Output errors are at	2.00 sigma
Reference Wellbore	Wellbore #1	Database:	landmark
Reference Design:	Plan #1 (10-17-14)	Offset TVD Reference:	Offset Datum

Offset Design													Offset Site Error:	0.0 ft	
Survey Program: 0-MWD													Offset Well Error:		0.0 ft
Reference		Offset		Semi Major Axis			Distance						Warning		
Measured Depth (ft)	Vertical Depth (ft)	Measured Depth (ft)	Vertical Depth (ft)	Reference (ft)	Offset (ft)	Highside Toolface (°)	Offset Wellbore Centre +N/-S (ft)	+E/-W (ft)	Between Centres (ft)	Between Ellipses (ft)	Minimum Separation (ft)	Separation Factor			
10,200.0	7,304.5	9,983.1	7,101.6	58.0	57.5	58.43	2,858.5	-73.3	387.5	287.2	100.28	3.864			
10,300.0	7,304.2	10,083.1	7,101.2	59.8	59.4	58.41	2,958.5	-72.9	387.6	284.1	103.50	3.745			
10,400.0	7,303.8	10,183.1	7,100.7	61.6	61.2	58.40	3,058.5	-72.5	387.6	280.9	106.72	3.632			
10,500.0	7,303.5	10,283.1	7,100.2	63.5	63.1	58.38	3,158.5	-72.1	387.7	277.7	109.95	3.526			
10,600.0	7,303.1	10,383.1	7,099.7	65.3	65.0	58.36	3,258.5	-71.6	387.7	274.6	113.19	3.426			
10,700.0	7,302.8	10,483.1	7,099.3	67.2	66.8	58.35	3,358.5	-71.2	387.8	271.4	116.43	3.331			
10,800.0	7,302.4	10,583.1	7,098.8	69.0	68.7	58.33	3,458.5	-70.8	387.9	268.2	119.67	3.241			
10,900.0	7,302.1	10,683.1	7,098.3	70.9	70.5	58.32	3,558.5	-70.4	387.9	265.0	122.92	3.156			
11,000.0	7,301.7	10,783.1	7,097.9	72.8	72.4	58.30	3,658.5	-70.0	388.0	261.8	126.17	3.075			
11,100.0	7,301.4	10,883.1	7,097.4	74.6	74.3	58.29	3,758.5	-69.5	388.1	258.6	129.42	2.998			
11,200.0	7,301.0	10,983.1	7,096.9	76.5	76.2	58.27	3,858.5	-69.1	388.1	255.4	132.68	2.925			
11,300.0	7,300.7	11,083.1	7,096.5	78.3	78.0	58.26	3,958.5	-68.7	388.2	252.2	135.94	2.856			
11,400.0	7,300.3	11,183.1	7,096.0	80.2	79.9	58.24	4,058.5	-68.3	388.3	249.0	139.21	2.789			
11,500.0	7,300.0	11,283.1	7,095.5	82.1	81.8	58.23	4,158.5	-67.9	388.3	245.8	142.47	2.726			
11,600.0	7,299.6	11,383.1	7,095.0	84.0	83.7	58.21	4,258.5	-67.4	388.4	242.6	145.74	2.665			
11,700.0	7,299.3	11,483.1	7,094.6	85.8	85.6	58.19	4,358.5	-67.0	388.4	239.4	149.01	2.607			
11,800.0	7,298.9	11,583.1	7,094.1	87.7	87.4	58.18	4,458.5	-66.6	388.5	236.2	152.28	2.551			
11,900.0	7,298.6	11,683.1	7,093.6	89.6	89.3	58.16	4,558.5	-66.2	388.6	233.0	155.55	2.498			
11,924.9	7,298.5	11,707.9	7,093.5	90.1	89.8	58.16	4,583.3	-66.1	388.6	232.2	156.36	2.485 SF			

Company:	Verdad Oil & Gas Corporation	Local Co-ordinate Reference:	Well Meehl 01N-65W-24-1C
Project:	SEC.24-T1N-R65W	TVD Reference:	WELL @ 5038.5ft (RKB - 16.5')
Reference Site:	Meehl 01N-65W-24 Pad Sec.24-T01N-R65W	MD Reference:	WELL @ 5038.5ft (RKB - 16.5')
Site Error:	0.0ft	North Reference:	True
Reference Well:	Meehl 01N-65W-24-1C	Survey Calculation Method:	Minimum Curvature
Well Error:	0.0ft	Output errors are at	2.00 sigma
Reference Wellbore	Wellbore #1	Database:	landmark
Reference Design:	Plan #1 (10-17-14)	Offset TVD Reference:	Offset Datum

Offset Design													Offset Site Error:	0.0ft	
Survey Program: 0-MWD													Offset Well Error:		0.0ft
Reference				Offset			Semi Major Axis			Distance				Warning	
Measured Depth (ft)	Vertical Depth (ft)	Measured Depth (ft)	Vertical Depth (ft)	Reference (ft)	Offset (ft)	Highside Toolface (°)	Offset Wellbore Centre +N/-S (ft)	+E/-W (ft)	Between Centres (ft)	Between Ellipses (ft)	Minimum Separation (ft)	Separation Factor			
0.0	0.0	0.0	0.0	0.0	0.0	89.54	0.4	45.1	45.1						
100.0	100.0	100.0	100.0	0.1	0.1	89.54	0.4	45.1	45.1	44.9	0.22	200.599			
200.0	200.0	200.0	200.0	0.3	0.3	89.54	0.4	45.1	45.1	44.4	0.67	66.866	CC, ES		
300.0	300.0	300.0	300.0	0.5	0.6	-153.52	0.4	45.1	46.6	45.5	1.11	41.919			
400.0	399.8	399.8	399.8	0.8	0.8	-156.08	0.4	45.1	51.4	49.8	1.55	33.054			
500.0	499.5	499.5	499.5	1.0	1.0	-159.43	0.4	45.1	59.5	57.4	2.01	29.597			
600.0	598.7	598.7	598.7	1.3	1.2	-162.78	0.4	45.1	70.7	68.3	2.46	28.702			
700.0	698.0	698.0	698.0	1.6	1.5	-165.34	0.4	45.1	82.8	79.8	2.92	28.379			
800.0	797.2	797.2	797.2	1.9	1.7	-167.25	0.4	45.1	94.9	91.5	3.37	28.158			
900.0	896.4	896.4	896.4	2.2	1.9	-168.72	0.4	45.1	107.1	103.3	3.83	27.998			
1,000.0	995.6	995.6	995.6	2.6	2.1	-169.90	0.4	45.1	119.4	115.1	4.28	27.877			
1,100.0	1,094.8	1,094.8	1,094.8	2.9	2.3	-170.85	0.4	45.1	131.7	127.0	4.74	27.783			
1,200.0	1,194.0	1,194.0	1,194.0	3.2	2.6	-171.64	0.4	45.1	144.1	138.9	5.20	27.707			
1,300.0	1,293.3	1,293.3	1,293.3	3.5	2.8	-172.31	0.4	45.1	156.5	150.8	5.66	27.645			
1,400.0	1,392.5	1,392.5	1,392.5	3.9	3.0	-172.87	0.4	45.1	168.9	162.8	6.12	27.593			
1,500.0	1,491.7	1,491.7	1,491.7	4.2	3.2	-173.36	0.4	45.1	181.3	174.7	6.58	27.548			
1,600.0	1,590.9	1,590.9	1,590.9	4.5	3.5	-173.79	0.4	45.1	193.7	186.7	7.04	27.510			
1,700.0	1,690.1	1,690.1	1,690.1	4.9	3.7	-174.17	0.4	45.1	206.1	198.6	7.50	27.477			
1,800.0	1,789.3	1,789.3	1,789.3	5.2	3.9	-174.50	0.4	45.1	218.6	210.6	7.96	27.448			
1,900.0	1,888.5	1,890.3	1,890.3	5.5	4.1	-174.46	-1.0	45.3	230.7	222.3	8.40	27.451			
2,000.0	1,987.8	1,991.5	1,991.4	5.8	4.3	-173.60	-6.0	46.1	242.0	233.2	8.82	27.422			
2,100.0	2,087.0	2,092.6	2,092.0	6.2	4.5	-172.02	-14.4	47.3	252.6	243.4	9.26	27.283			
2,200.0	2,186.2	2,192.4	2,191.2	6.5	4.7	-169.93	-25.7	49.1	262.9	253.2	9.72	27.061			
2,300.0	2,285.4	2,291.4	2,289.5	6.8	4.9	-167.94	-37.4	50.8	273.5	263.3	10.19	26.834			
2,400.0	2,384.6	2,390.4	2,387.8	7.2	5.1	-166.09	-49.0	52.6	284.4	273.7	10.68	26.616			
2,500.0	2,483.8	2,489.4	2,486.1	7.5	5.3	-164.37	-60.7	54.4	295.5	284.3	11.19	26.407			
2,600.0	2,583.1	2,588.4	2,584.4	7.8	5.5	-162.79	-72.3	56.2	306.9	295.2	11.71	26.210			
2,700.0	2,682.3	2,687.4	2,682.7	8.2	5.8	-161.31	-84.0	58.0	318.5	306.3	12.24	26.024			
2,800.0	2,781.5	2,786.4	2,781.0	8.5	6.0	-159.94	-95.6	59.7	330.3	317.5	12.78	25.850			
2,900.0	2,880.7	2,885.4	2,879.3	8.8	6.3	-158.67	-107.3	61.5	342.3	329.0	13.33	25.687			
3,000.0	2,979.9	2,984.4	2,977.6	9.1	6.6	-157.48	-118.9	63.3	354.4	340.5	13.88	25.536			
3,100.0	3,079.1	3,083.4	3,075.9	9.5	6.8	-156.37	-130.6	65.1	366.7	352.3	14.44	25.395			
3,200.0	3,178.4	3,182.4	3,174.2	9.8	7.1	-155.33	-142.2	66.8	379.1	364.1	15.00	25.265			
3,300.0	3,277.6	3,281.4	3,272.5	10.1	7.4	-154.36	-153.9	68.6	391.6	376.0	15.57	25.145			
3,400.0	3,376.8	3,380.4	3,370.8	10.5	7.6	-153.45	-165.5	70.4	404.2	388.1	16.15	25.033			
3,500.0	3,476.0	3,479.4	3,469.1	10.8	7.9	-152.59	-177.2	72.2	417.0	400.2	16.72	24.930			
3,600.0	3,575.2	3,578.4	3,567.4	11.1	8.2	-151.78	-188.8	74.0	429.8	412.4	17.30	24.834			
3,700.0	3,674.4	3,677.6	3,665.9	11.5	8.5	-151.02	-200.5	75.7	442.6	424.7	17.89	24.748			
3,800.0	3,773.6	3,779.5	3,767.2	11.8	8.8	-150.54	-210.5	77.3	455.2	436.8	18.42	24.709			
3,900.0	3,872.9	3,881.6	3,869.1	12.1	9.0	-150.53	-216.9	78.2	467.2	448.3	18.92	24.695			
4,000.0	3,972.1	3,983.8	3,971.3	12.4	9.2	-150.97	-219.7	78.7	478.5	459.1	19.37	24.700			
4,100.0	4,071.6	4,084.1	4,071.6	12.7	9.4	-151.60	-219.8	78.7	487.0	467.3	19.74	24.676			
4,200.0	4,171.4	4,183.9	4,171.4	12.8	9.6	-151.99	-219.8	78.7	492.5	472.5	20.08	24.524			
4,300.0	4,271.4	4,283.9	4,271.4	13.0	9.8	-152.17	-219.8	78.7	495.0	474.5	20.41	24.246			
4,400.0	4,371.4	4,383.9	4,371.4	13.1	10.0	89.91	-219.8	78.7	495.1	474.3	20.76	23.848			
4,500.0	4,471.4	4,483.9	4,471.4	13.3	10.1	89.91	-219.8	78.7	495.1	474.0	21.12	23.444			
4,600.0	4,571.4	4,583.9	4,571.4	13.4	10.3	89.91	-219.8	78.7	495.1	473.6	21.48	23.050			
4,700.0	4,671.4	4,683.9	4,671.4	13.5	10.5	89.91	-219.8	78.7	495.1	473.2	21.84	22.665			
4,800.0	4,771.4	4,783.9	4,771.4	13.7	10.7	89.91	-219.8	78.7	495.1	472.9	22.21	22.290			
4,900.0	4,871.4	4,883.9	4,871.4	13.8	10.9	89.91	-219.8	78.7	495.1	472.5	22.58	21.925			
5,000.0	4,971.4	4,983.9	4,971.4	14.0	11.1	89.91	-219.8	78.7	495.1	472.1	22.95	21.568			
5,100.0	5,071.4	5,083.9	5,071.4	14.2	11.3	89.91	-219.8	78.7	495.1	471.8	23.33	21.221			

CC - Min centre to center distance or convergent point, SF - min separation factor, ES - min ellipse separation

Company:	Verdad Oil & Gas Corporation	Local Co-ordinate Reference:	Well Meehl 01N-65W-24-1C
Project:	SEC.24-T1N-R65W	TVD Reference:	WELL @ 5038.5ft (RKB - 16.5')
Reference Site:	Meehl 01N-65W-24 Pad Sec.24-T01N-R65W	MD Reference:	WELL @ 5038.5ft (RKB - 16.5')
Site Error:	0.0ft	North Reference:	True
Reference Well:	Meehl 01N-65W-24-1C	Survey Calculation Method:	Minimum Curvature
Well Error:	0.0ft	Output errors are at	2.00 sigma
Reference Wellbore	Wellbore #1	Database:	landmark
Reference Design:	Plan #1 (10-17-14)	Offset TVD Reference:	Offset Datum

Offset Design													Offset Site Error:	0.0ft	
Survey Program: 0-MWD													Offset Well Error:		0.0ft
Reference		Offset		Semi Major Axis			Distance						Warning		
Measured Depth (ft)	Vertical Depth (ft)	Measured Depth (ft)	Vertical Depth (ft)	Reference (ft)	Offset (ft)	Highside Toolface (°)	Offset Wellbore Centre +N/-S (ft)	+E/-W (ft)	Between Centres (ft)	Between Ellipses (ft)	Minimum Separation (ft)	Separation Factor			
5,200.0	5,171.4	5,183.9	5,171.4	14.3	11.5	89.91	-219.8	78.7	495.1	471.4	23.71	20.883			
5,300.0	5,271.4	5,283.9	5,271.4	14.5	11.7	89.91	-219.8	78.7	495.1	471.0	24.09	20.553			
5,400.0	5,371.4	5,383.9	5,371.4	14.6	11.9	89.91	-219.8	78.7	495.1	470.6	24.47	20.231			
5,500.0	5,471.4	5,483.9	5,471.4	14.8	12.1	89.91	-219.8	78.7	495.1	470.2	24.86	19.917			
5,600.0	5,571.4	5,583.9	5,571.4	14.9	12.3	89.91	-219.8	78.7	495.1	469.8	25.24	19.612			
5,700.0	5,671.4	5,683.9	5,671.4	15.1	12.5	89.91	-219.8	78.7	495.1	469.5	25.63	19.314			
5,800.0	5,771.4	5,783.9	5,771.4	15.3	12.7	89.91	-219.8	78.7	495.1	469.1	26.02	19.024			
5,900.0	5,871.4	5,883.9	5,871.4	15.4	12.9	89.91	-219.8	78.7	495.1	468.7	26.42	18.741			
6,000.0	5,971.4	5,983.9	5,971.4	15.6	13.2	89.91	-219.8	78.7	495.1	468.3	26.81	18.465			
6,100.0	6,071.4	6,083.9	6,071.4	15.8	13.4	89.91	-219.8	78.7	495.1	467.9	27.21	18.196			
6,200.0	6,171.4	6,183.9	6,171.4	16.0	13.6	89.91	-219.8	78.7	495.1	467.5	27.61	17.933			
6,300.0	6,271.4	6,283.9	6,271.4	16.1	13.8	89.91	-219.8	78.7	495.1	467.1	28.01	17.678			
6,400.0	6,371.4	6,383.9	6,371.4	16.3	14.0	89.91	-219.8	78.7	495.1	466.7	28.41	17.428			
6,500.0	6,471.4	6,483.9	6,471.4	16.5	14.2	89.91	-219.8	78.7	495.1	466.3	28.81	17.185			
6,600.0	6,571.4	6,583.9	6,571.4	16.6	14.4	89.91	-219.8	78.7	495.1	465.9	29.21	16.947			
6,624.4	6,595.8	6,608.3	6,595.8	16.7	14.5	89.91	-219.8	78.7	495.1	465.8	29.31	16.890			
6,700.0	6,671.4	6,682.9	6,670.1	16.8	14.6	89.24	-214.1	78.7	495.2	465.6	29.57	16.747			
6,800.0	6,771.4	6,776.5	6,760.9	17.0	14.7	86.69	-192.0	78.8	496.1	466.4	29.79	16.655			
6,900.0	6,871.1	6,862.2	6,839.4	17.2	14.8	82.74	-157.8	78.9	499.6	469.7	29.91	16.705			
7,000.0	6,967.9	6,943.9	6,908.1	17.3	14.8	79.22	-113.6	79.1	504.9	474.9	29.93	16.870			
7,100.0	7,058.3	7,022.7	6,966.9	17.3	14.9	76.08	-61.4	79.4	511.1	481.3	29.88	17.105			
7,200.0	7,138.9	7,100.0	7,016.4	17.3	15.0	73.38	-2.1	79.6	517.7	487.9	29.81	17.366			
7,300.0	7,206.7	7,174.1	7,055.1	17.3	15.2	71.22	61.0	79.9	523.7	493.9	29.78	17.584			
7,400.0	7,259.4	7,250.0	7,085.1	17.3	15.5	69.56	130.7	80.2	528.7	498.8	29.90	17.682			
7,500.0	7,294.9	7,320.6	7,103.5	17.4	15.8	68.53	198.8	80.4	532.2	501.9	30.28	17.576			
7,600.0	7,312.0	7,393.0	7,112.8	17.8	16.3	68.05	270.5	80.7	533.8	502.8	31.00	17.216			
7,700.0	7,313.2	7,480.3	7,113.4	18.4	17.0	68.02	357.9	81.1	533.9	501.6	32.27	16.542			
7,800.0	7,312.9	7,580.3	7,112.9	19.2	17.9	68.01	457.9	81.5	533.9	499.9	33.99	15.709			
7,900.0	7,312.5	7,680.3	7,112.5	20.3	19.0	67.99	557.9	81.9	534.0	498.0	35.98	14.843			
8,000.0	7,312.2	7,780.3	7,112.0	21.4	20.2	67.98	657.8	82.4	534.0	495.8	38.20	13.981			
8,100.0	7,311.9	7,880.3	7,111.5	22.7	21.6	67.97	757.8	82.8	534.1	493.4	40.61	13.149			
8,200.0	7,311.5	7,980.3	7,111.1	24.0	23.0	67.96	857.8	83.2	534.1	490.9	43.20	12.365			
8,300.0	7,311.2	8,080.3	7,110.6	25.4	24.4	67.95	957.8	83.6	534.2	488.2	45.91	11.634			
8,400.0	7,310.8	8,180.3	7,110.1	26.9	26.0	67.93	1,057.8	84.0	534.2	485.5	48.74	10.960			
8,500.0	7,310.5	8,280.3	7,109.6	28.4	27.5	67.92	1,157.8	84.5	534.2	482.6	51.66	10.341			
8,600.0	7,310.1	8,380.3	7,109.2	30.0	29.1	67.91	1,257.8	84.9	534.3	479.6	54.67	9.774			
8,700.0	7,309.8	8,480.3	7,108.7	31.6	30.8	67.90	1,357.8	85.3	534.3	476.6	57.73	9.255			
8,800.0	7,309.4	8,580.3	7,108.2	33.2	32.5	67.88	1,457.8	85.7	534.4	473.5	60.86	8.781			
8,900.0	7,309.1	8,680.3	7,107.8	34.9	34.2	67.87	1,557.8	86.1	534.4	470.4	64.03	8.346			
9,000.0	7,308.7	8,780.3	7,107.3	36.6	35.9	67.86	1,657.8	86.6	534.5	467.2	67.25	7.948			
9,100.0	7,308.4	8,880.3	7,106.8	38.3	37.6	67.85	1,757.8	87.0	534.5	464.0	70.49	7.582			
9,200.0	7,308.0	8,980.3	7,106.3	40.0	39.4	67.84	1,857.8	87.4	534.6	460.8	73.77	7.246			
9,300.0	7,307.7	9,080.3	7,105.9	41.8	41.2	67.82	1,957.8	87.8	534.6	457.5	77.08	6.936			
9,400.0	7,307.3	9,180.3	7,105.4	43.5	43.0	67.81	2,057.8	88.2	534.6	454.2	80.41	6.649			
9,500.0	7,307.0	9,280.3	7,104.9	45.3	44.8	67.80	2,157.8	88.7	534.7	450.9	83.76	6.384			
9,600.0	7,306.6	9,380.3	7,104.5	47.1	46.6	67.79	2,257.8	89.1	534.7	447.6	87.13	6.137			
9,700.0	7,306.3	9,480.3	7,104.0	48.9	48.4	67.78	2,357.8	89.5	534.8	444.3	90.51	5.908			
9,800.0	7,305.9	9,580.3	7,103.5	50.7	50.2	67.76	2,457.8	89.9	534.8	440.9	93.91	5.695			
9,900.0	7,305.6	9,680.3	7,103.0	52.5	52.0	67.75	2,557.8	90.3	534.9	437.6	97.32	5.496			
10,000.0	7,305.2	9,780.3	7,102.6	54.3	53.9	67.74	2,657.8	90.8	534.9	434.2	100.74	5.310			
10,100.0	7,304.9	9,880.3	7,102.1	56.1	55.7	67.73	2,757.8	91.2	535.0	430.8	104.18	5.135			
10,200.0	7,304.5	9,980.3	7,101.6	58.0	57.5	67.71	2,857.8	91.6	535.0	427.4	107.62	4.971			

CC - Min centre to center distance or convergent point, SF - min separation factor, ES - min ellipse separation

Company:	Verdad Oil & Gas Corporation	Local Co-ordinate Reference:	Well Meehl 01N-65W-24-1C
Project:	SEC.24-T1N-R65W	TVD Reference:	WELL @ 5038.5ft (RKB - 16.5')
Reference Site:	Meehl 01N-65W-24 Pad Sec.24-T01N-R65W	MD Reference:	WELL @ 5038.5ft (RKB - 16.5')
Site Error:	0.0ft	North Reference:	True
Reference Well:	Meehl 01N-65W-24-1C	Survey Calculation Method:	Minimum Curvature
Well Error:	0.0ft	Output errors are at	2.00 sigma
Reference Wellbore	Wellbore #1	Database:	landmark
Reference Design:	Plan #1 (10-17-14)	Offset TVD Reference:	Offset Datum

Offset Design													Offset Site Error:	0.0 ft	
Survey Program: 0-MWD													Offset Well Error:		0.0 ft
Reference		Offset		Semi Major Axis			Distance						Warning		
Measured Depth (ft)	Vertical Depth (ft)	Measured Depth (ft)	Vertical Depth (ft)	Reference (ft)	Offset (ft)	Highside Toolface (°)	Offset Wellbore Centre +N/-S (ft)	+E/-W (ft)	Between Centres (ft)	Between Ellipses (ft)	Minimum Separation (ft)	Separation Factor			
10,300.0	7,304.2	10,080.3	7,101.2	59.8	59.4	67.70	2,957.8	92.0	535.1	424.0	111.07	4.817			
10,400.0	7,303.8	10,180.3	7,100.7	61.6	61.2	67.69	3,057.8	92.4	535.1	420.6	114.52	4.672			
10,500.0	7,303.5	10,280.3	7,100.2	63.5	63.1	67.68	3,157.8	92.9	535.1	417.2	117.99	4.536			
10,600.0	7,303.1	10,380.3	7,099.7	65.3	65.0	67.67	3,257.8	93.3	535.2	413.7	121.46	4.406			
10,700.0	7,302.8	10,480.3	7,099.3	67.2	66.8	67.65	3,357.8	93.7	535.2	410.3	124.93	4.284			
10,800.0	7,302.4	10,580.3	7,098.8	69.0	68.7	67.64	3,457.8	94.1	535.3	406.9	128.41	4.168			
10,900.0	7,302.1	10,680.3	7,098.3	70.9	70.6	67.63	3,557.8	94.5	535.3	403.4	131.90	4.059			
11,000.0	7,301.7	10,780.3	7,097.9	72.8	72.4	67.62	3,657.8	95.0	535.4	400.0	135.39	3.954			
11,100.0	7,301.4	10,880.3	7,097.4	74.6	74.3	67.61	3,757.8	95.4	535.4	396.5	138.88	3.855			
11,200.0	7,301.0	10,980.3	7,096.9	76.5	76.2	67.59	3,857.8	95.8	535.5	393.1	142.38	3.761			
11,300.0	7,300.7	11,080.3	7,096.5	78.3	78.0	67.58	3,957.8	96.2	535.5	389.6	145.88	3.671			
11,400.0	7,300.3	11,180.3	7,096.0	80.2	79.9	67.57	4,057.8	96.6	535.6	386.2	149.38	3.585			
11,500.0	7,300.0	11,280.3	7,095.5	82.1	81.8	67.56	4,157.8	97.1	535.6	382.7	152.88	3.503			
11,600.0	7,299.6	11,380.3	7,095.0	84.0	83.7	67.54	4,257.8	97.5	535.6	379.3	156.39	3.425			
11,700.0	7,299.3	11,480.3	7,094.6	85.8	85.6	67.53	4,357.8	97.9	535.7	375.8	159.90	3.350			
11,800.0	7,298.9	11,580.3	7,094.1	87.7	87.5	67.52	4,457.8	98.3	535.7	372.3	163.42	3.278			
11,900.0	7,298.6	11,680.3	7,093.6	89.6	89.3	67.51	4,557.8	98.7	535.8	368.9	166.93	3.210			
11,924.9	7,298.5	11,705.2	7,093.5	90.1	89.8	67.51	4,582.6	98.8	535.8	368.0	167.80	3.193 SF			

Company:	Verdad Oil & Gas Corporation	Local Co-ordinate Reference:	Well Meehl 01N-65W-24-1C
Project:	SEC.24-T1N-R65W	TVD Reference:	WELL @ 5038.5ft (RKB - 16.5')
Reference Site:	Meehl 01N-65W-24 Pad Sec.24-T01N-R65W	MD Reference:	WELL @ 5038.5ft (RKB - 16.5')
Site Error:	0.0ft	North Reference:	True
Reference Well:	Meehl 01N-65W-24-1C	Survey Calculation Method:	Minimum Curvature
Well Error:	0.0ft	Output errors are at	2.00 sigma
Reference Wellbore	Wellbore #1	Database:	landmark
Reference Design:	Plan #1 (10-17-14)	Offset TVD Reference:	Offset Datum

Offset Design													Offset Site Error:	0.0ft
Survey Program: 0-MWD													Offset Well Error:	0.0ft
Reference				Offset			Semi Major Axis			Distance				Warning
Measured Depth (ft)	Vertical Depth (ft)	Measured Depth (ft)	Vertical Depth (ft)	Reference (ft)	Offset (ft)	Highside Toolface (°)	Offset Wellbore Centre +N/-S (ft)	+E/-W (ft)	Between Centres (ft)	Between Ellipses (ft)	Minimum Separation (ft)	Separation Factor		
0.0	0.0	0.0	0.0	0.0	0.0	89.67	0.3	60.2	60.2					
100.0	100.0	100.0	100.0	0.1	0.1	89.67	0.3	60.2	60.2	60.0	0.22	267.876		
200.0	200.0	200.0	200.0	0.3	0.3	89.67	0.3	60.2	60.2	59.5	0.67	89.292	CC, ES	
300.0	300.0	300.0	300.0	0.5	0.6	-153.15	0.3	60.2	61.8	60.6	1.11	55.508		
400.0	399.8	399.8	399.8	0.8	0.8	-155.15	0.3	60.2	66.5	64.9	1.55	42.766		
500.0	499.5	499.5	499.5	1.0	1.0	-157.90	0.3	60.2	74.5	72.5	2.01	37.068		
600.0	598.7	598.7	598.7	1.3	1.2	-160.86	0.3	60.2	85.6	83.2	2.47	34.723		
700.0	698.0	698.0	698.0	1.6	1.5	-163.26	0.3	60.2	97.5	94.6	2.92	33.406		
800.0	797.2	797.2	797.2	1.9	1.7	-165.14	0.3	60.2	109.6	106.2	3.38	32.460		
900.0	896.4	896.4	896.4	2.2	1.9	-166.65	0.3	60.2	121.7	117.9	3.83	31.752		
1,000.0	995.6	995.6	995.6	2.6	2.1	-167.89	0.3	60.2	133.9	129.6	4.29	31.204		
1,100.0	1,094.8	1,094.8	1,094.8	2.9	2.3	-168.92	0.3	60.2	146.1	141.4	4.75	30.768		
1,200.0	1,194.0	1,194.0	1,194.0	3.2	2.6	-169.78	0.3	60.2	158.4	153.2	5.21	30.413		
1,300.0	1,293.3	1,293.3	1,293.3	3.5	2.8	-170.53	0.3	60.2	170.7	165.1	5.67	30.119		
1,400.0	1,392.5	1,392.5	1,392.5	3.9	3.0	-171.17	0.3	60.2	183.1	177.0	6.13	29.872		
1,500.0	1,491.7	1,491.7	1,491.7	4.2	3.2	-171.73	0.3	60.2	195.4	188.9	6.59	29.661		
1,600.0	1,590.9	1,590.9	1,590.9	4.5	3.5	-172.23	0.3	60.2	207.8	200.8	7.05	29.478		
1,700.0	1,690.1	1,690.1	1,690.1	4.9	3.7	-172.67	0.3	60.2	220.2	212.7	7.51	29.319		
1,800.0	1,789.3	1,789.3	1,789.3	5.2	3.9	-173.06	0.3	60.2	232.6	224.6	7.97	29.179		
1,900.0	1,888.5	1,888.5	1,888.5	5.5	4.1	-173.41	0.3	60.2	245.0	236.6	8.43	29.054		
2,000.0	1,987.8	1,987.8	1,987.8	5.8	4.4	-173.73	0.3	60.2	257.5	248.6	8.90	28.944		
2,100.0	2,087.0	2,084.5	2,084.5	6.2	4.6	-173.76	-0.6	61.0	270.3	260.9	9.33	28.963		
2,200.0	2,186.2	2,180.6	2,180.5	6.5	4.7	-173.17	-4.0	63.8	284.1	274.4	9.75	29.134		
2,300.0	2,285.4	2,276.1	2,275.6	6.8	4.9	-172.05	-9.9	68.7	299.1	289.0	10.18	29.378		
2,400.0	2,384.6	2,371.0	2,370.0	7.2	5.1	-170.49	-18.1	75.6	315.4	304.8	10.63	29.679		
2,500.0	2,483.8	2,469.1	2,467.3	7.5	5.3	-168.81	-27.7	83.5	332.5	321.4	11.10	29.961		
2,600.0	2,583.1	2,567.2	2,564.5	7.8	5.5	-167.29	-37.3	91.5	349.8	338.2	11.58	30.213		
2,700.0	2,682.3	2,665.3	2,661.8	8.2	5.7	-165.92	-46.9	99.5	367.4	355.3	12.07	30.437		
2,800.0	2,781.5	2,763.3	2,759.1	8.5	6.0	-164.67	-56.4	107.5	385.1	372.5	12.57	30.638		
2,900.0	2,880.7	2,861.4	2,856.4	8.8	6.2	-163.53	-66.0	115.5	403.0	389.9	13.08	30.818		
3,000.0	2,979.9	2,959.5	2,953.7	9.1	6.5	-162.48	-75.6	123.5	421.0	407.4	13.59	30.981		
3,100.0	3,079.1	3,057.6	3,051.0	9.5	6.8	-161.52	-85.2	131.5	439.2	425.1	14.11	31.129		
3,200.0	3,178.4	3,155.7	3,148.3	9.8	7.0	-160.64	-94.8	139.5	457.4	442.8	14.63	31.264		
3,300.0	3,277.6	3,253.7	3,245.5	10.1	7.3	-159.83	-104.4	147.4	475.8	460.6	15.16	31.389		
3,400.0	3,376.8	3,351.8	3,342.8	10.5	7.6	-159.07	-114.0	155.4	494.2	478.6	15.69	31.503		
3,500.0	3,476.0	3,449.9	3,440.1	10.8	7.8	-158.37	-123.6	163.4	512.8	496.5	16.22	31.609		
3,600.0	3,575.2	3,548.0	3,537.4	11.1	8.1	-157.72	-133.2	171.4	531.4	514.6	16.76	31.708		
3,700.0	3,674.4	3,646.1	3,634.7	11.5	8.4	-157.12	-142.7	179.4	550.0	532.7	17.30	31.800		
3,800.0	3,773.6	3,744.2	3,732.0	11.8	8.7	-156.55	-152.3	187.4	568.7	550.9	17.84	31.886		
3,900.0	3,872.9	3,842.2	3,829.2	12.1	9.0	-156.02	-161.9	195.4	587.5	569.1	18.38	31.967		
4,000.0	3,972.1	3,940.3	3,926.6	12.4	9.3	-155.56	-171.5	203.3	606.2	587.2	18.92	32.038		
4,100.0	4,071.6	4,038.8	4,024.2	12.7	9.6	-155.12	-181.1	211.4	622.5	603.1	19.41	32.066		
4,200.0	4,171.4	4,137.6	4,122.2	12.8	9.9	-154.55	-190.8	219.4	635.8	615.9	19.89	31.970		
4,300.0	4,271.4	4,236.7	4,220.5	13.0	10.2	-153.85	-200.5	227.5	646.1	625.7	20.34	31.765		
4,400.0	4,371.4	4,350.0	4,333.1	13.1	10.5	89.09	-210.3	235.6	653.2	632.4	20.80	31.400		
4,500.0	4,471.4	4,466.6	4,449.4	13.3	10.8	89.67	-216.8	241.1	657.9	636.6	21.24	30.976		
4,600.0	4,571.4	4,583.7	4,566.4	13.4	11.0	89.92	-219.7	243.5	659.9	638.3	21.64	30.488		
4,700.0	4,671.4	4,688.7	4,671.4	13.5	11.2	89.94	-219.9	243.6	660.0	638.0	22.01	29.982		
4,800.0	4,771.4	4,788.7	4,771.4	13.7	11.4	89.94	-219.9	243.6	660.0	637.6	22.38	29.497		
4,900.0	4,871.4	4,888.7	4,871.4	13.8	11.6	89.94	-219.9	243.6	660.0	637.3	22.74	29.022		
5,000.0	4,971.4	4,988.7	4,971.4	14.0	11.7	89.94	-219.9	243.6	660.0	636.9	23.11	28.559		
5,100.0	5,071.4	5,088.7	5,071.4	14.2	11.9	89.94	-219.9	243.6	660.0	636.5	23.48	28.108		

CC - Min centre to center distance or convergent point, SF - min separation factor, ES - min ellipse separation

Company:	Verdad Oil & Gas Corporation	Local Co-ordinate Reference:	Well Meehl 01N-65W-24-1C
Project:	SEC.24-T1N-R65W	TVD Reference:	WELL @ 5038.5ft (RKB - 16.5')
Reference Site:	Meehl 01N-65W-24 Pad Sec.24-T01N-R65W	MD Reference:	WELL @ 5038.5ft (RKB - 16.5')
Site Error:	0.0ft	North Reference:	True
Reference Well:	Meehl 01N-65W-24-1C	Survey Calculation Method:	Minimum Curvature
Well Error:	0.0ft	Output errors are at	2.00 sigma
Reference Wellbore	Wellbore #1	Database:	landmark
Reference Design:	Plan #1 (10-17-14)	Offset TVD Reference:	Offset Datum

Offset Design													Offset Site Error:	0.0ft	
Survey Program: 0-MWD													Offset Well Error:		0.0ft
Reference		Offset		Semi Major Axis			Distance						Warning		
Measured Depth (ft)	Vertical Depth (ft)	Measured Depth (ft)	Vertical Depth (ft)	Reference (ft)	Offset (ft)	Highside Toolface (°)	Offset Wellbore Centre +N/-S (ft)	+E/-W (ft)	Between Centres (ft)	Between Ellipses (ft)	Minimum Separation (ft)	Separation Factor			
5,200.0	5,171.4	5,188.7	5,171.4	14.3	12.1	89.94	-219.9	243.6	660.0	636.2	23.86	27.667			
5,300.0	5,271.4	5,288.7	5,271.4	14.5	12.3	89.94	-219.9	243.6	660.0	635.8	24.23	27.237			
5,400.0	5,371.4	5,388.7	5,371.4	14.6	12.5	89.94	-219.9	243.6	660.0	635.4	24.61	26.818			
5,500.0	5,471.4	5,488.7	5,471.4	14.8	12.7	89.94	-219.9	243.6	660.0	635.0	24.99	26.409			
5,600.0	5,571.4	5,588.7	5,571.4	14.9	12.9	89.94	-219.9	243.6	660.0	634.6	25.38	26.009			
5,700.0	5,671.4	5,688.7	5,671.4	15.1	13.1	89.94	-219.9	243.6	660.0	634.2	25.76	25.620			
5,800.0	5,771.4	5,788.7	5,771.4	15.3	13.3	89.94	-219.9	243.6	660.0	633.9	26.15	25.240			
5,900.0	5,871.4	5,888.7	5,871.4	15.4	13.5	89.94	-219.9	243.6	660.0	633.5	26.54	24.870			
6,000.0	5,971.4	5,988.7	5,971.4	15.6	13.7	89.94	-219.9	243.6	660.0	633.1	26.93	24.508			
6,100.0	6,071.4	6,088.7	6,071.4	15.8	13.9	89.94	-219.9	243.6	660.0	632.7	27.32	24.156			
6,200.0	6,171.4	6,188.7	6,171.4	16.0	14.1	89.94	-219.9	243.6	660.0	632.3	27.72	23.811			
6,300.0	6,271.4	6,288.7	6,271.4	16.1	14.3	89.94	-219.9	243.6	660.0	631.9	28.11	23.475			
6,400.0	6,371.4	6,388.7	6,371.4	16.3	14.5	89.94	-219.9	243.6	660.0	631.5	28.51	23.148			
6,500.0	6,471.4	6,488.7	6,471.4	16.5	14.7	89.94	-219.9	243.6	660.0	631.1	28.91	22.828			
6,600.0	6,571.4	6,588.7	6,571.4	16.6	14.9	89.94	-219.9	243.6	660.0	630.7	29.31	22.515			
6,700.0	6,671.4	6,688.7	6,671.4	16.8	15.1	89.94	-219.9	243.6	660.0	630.3	29.72	22.211			
6,800.0	6,771.4	6,788.7	6,771.4	17.0	15.3	89.94	-219.9	243.6	660.0	629.9	30.12	21.913			
6,900.0	6,871.1	6,888.2	6,870.5	17.2	15.5	89.70	-214.0	243.6	660.0	629.5	30.48	21.657			
7,000.0	6,967.9	6,987.5	6,966.8	17.3	15.6	89.71	-189.9	243.7	660.0	629.3	30.68	21.512			
7,100.0	7,058.3	7,086.9	7,056.7	17.3	15.7	89.74	-147.9	243.9	660.0	629.2	30.79	21.433			
7,200.0	7,138.9	7,186.3	7,137.1	17.3	15.7	89.77	-89.6	244.2	660.0	629.1	30.91	21.354			
7,300.0	7,206.7	7,285.9	7,205.0	17.3	15.7	89.81	-17.1	244.5	660.0	628.9	31.14	21.194			
7,400.0	7,259.4	7,385.5	7,258.0	17.3	15.8	89.86	67.1	244.8	660.0	628.4	31.61	20.880			
7,500.0	7,294.9	7,485.3	7,294.0	17.4	16.1	89.92	160.0	245.2	660.0	627.6	32.40	20.369			
7,600.0	7,312.0	7,585.1	7,311.7	17.8	16.7	89.97	258.1	245.6	660.0	626.5	33.55	19.671			
7,700.0	7,313.2	7,685.1	7,313.2	18.4	17.5	90.00	358.1	246.1	660.0	625.0	35.04	18.835			
7,800.0	7,312.9	7,785.1	7,312.9	19.2	18.4	90.00	458.1	246.5	660.0	623.2	36.87	17.903			
7,900.0	7,312.5	7,885.1	7,312.6	20.3	19.5	90.00	558.1	246.9	660.0	621.1	38.98	16.933			
8,000.0	7,312.2	7,985.1	7,312.2	21.4	20.7	90.00	658.1	247.3	660.0	618.7	41.34	15.967			
8,100.0	7,311.9	8,085.1	7,311.9	22.7	22.0	90.00	758.1	247.8	660.0	616.1	43.91	15.033			
8,200.0	7,311.5	8,185.1	7,311.5	24.0	23.3	90.00	858.1	248.2	660.1	613.4	46.65	14.150			
8,300.0	7,311.2	8,285.1	7,311.2	25.4	24.8	90.00	958.1	248.6	660.1	610.5	49.53	13.326			
8,400.0	7,310.8	8,385.1	7,310.8	26.9	26.3	90.00	1,058.1	249.0	660.1	607.5	52.54	12.564			
8,500.0	7,310.5	8,485.1	7,310.5	28.4	27.9	90.00	1,158.1	249.5	660.1	604.4	55.64	11.863			
8,600.0	7,310.1	8,585.1	7,310.1	30.0	29.4	90.00	1,258.1	249.9	660.1	601.2	58.83	11.219			
8,700.0	7,309.8	8,685.1	7,309.8	31.6	31.1	90.00	1,358.1	250.3	660.1	598.0	62.10	10.630			
8,800.0	7,309.4	8,785.1	7,309.4	33.2	32.7	90.00	1,458.1	250.7	660.1	594.7	65.42	10.090			
8,900.0	7,309.1	8,885.1	7,309.1	34.9	34.4	90.00	1,558.0	251.2	660.1	591.3	68.80	9.594			
9,000.0	7,308.7	8,985.1	7,308.7	36.6	36.1	90.00	1,658.0	251.6	660.1	587.9	72.22	9.140			
9,100.0	7,308.4	9,085.1	7,308.4	38.3	37.9	90.00	1,758.0	252.0	660.1	584.4	75.68	8.722			
9,200.0	7,308.0	9,185.1	7,308.0	40.0	39.6	90.00	1,858.0	252.4	660.1	580.9	79.18	8.337			
9,300.0	7,307.7	9,285.1	7,307.7	41.8	41.4	90.00	1,958.0	252.9	660.1	577.4	82.70	7.982			
9,400.0	7,307.3	9,385.1	7,307.3	43.5	43.2	90.00	2,058.0	253.3	660.1	573.9	86.25	7.653			
9,500.0	7,307.0	9,485.1	7,307.0	45.3	44.9	90.00	2,158.0	253.7	660.1	570.3	89.83	7.349			
9,600.0	7,306.6	9,585.1	7,306.6	47.1	46.7	90.00	2,258.0	254.1	660.1	566.7	93.42	7.066			
9,700.0	7,306.3	9,685.1	7,306.3	48.9	48.5	90.00	2,358.0	254.6	660.1	563.1	97.03	6.803			
9,800.0	7,305.9	9,785.1	7,305.9	50.7	50.4	90.00	2,458.0	255.0	660.1	559.5	100.66	6.558			
9,900.0	7,305.6	9,885.1	7,305.6	52.5	52.2	90.00	2,558.0	255.4	660.1	555.8	104.30	6.329			
10,000.0	7,305.2	9,985.1	7,305.2	54.3	54.0	90.00	2,658.0	255.9	660.1	552.2	107.95	6.115			
10,100.0	7,304.9	10,085.1	7,304.9	56.1	55.8	90.00	2,758.0	256.3	660.1	548.5	111.62	5.914			
10,200.0	7,304.5	10,185.1	7,304.5	58.0	57.7	90.00	2,858.0	256.7	660.1	544.8	115.30	5.726			
10,300.0	7,304.2	10,285.1	7,304.2	59.8	59.5	90.00	2,958.0	257.1	660.2	541.2	118.98	5.548			

CC - Min centre to center distance or convergent point, SF - min separation factor, ES - min ellipse separation

Company:	Verdad Oil & Gas Corporation	Local Co-ordinate Reference:	Well Meehl 01N-65W-24-1C
Project:	SEC.24-T1N-R65W	TVD Reference:	WELL @ 5038.5ft (RKB - 16.5')
Reference Site:	Meehl 01N-65W-24 Pad Sec.24-T01N-R65W	MD Reference:	WELL @ 5038.5ft (RKB - 16.5')
Site Error:	0.0ft	North Reference:	True
Reference Well:	Meehl 01N-65W-24-1C	Survey Calculation Method:	Minimum Curvature
Well Error:	0.0ft	Output errors are at	2.00 sigma
Reference Wellbore	Wellbore #1	Database:	landmark
Reference Design:	Plan #1 (10-17-14)	Offset TVD Reference:	Offset Datum

Offset Design													Offset Site Error:	0.0 ft	
Survey Program: 0-MWD													Offset Well Error:		0.0 ft
Reference		Offset		Semi Major Axis			Distance						Warning		
Measured Depth (ft)	Vertical Depth (ft)	Measured Depth (ft)	Vertical Depth (ft)	Reference (ft)	Offset (ft)	Highside Toolface (°)	Offset Wellbore Centre +N/-S (ft)	+E/-W (ft)	Between Centres (ft)	Between Ellipses (ft)	Minimum Separation (ft)	Separation Factor			
10,400.0	7,303.8	10,385.1	7,303.8	61.6	61.4	90.00	3,058.0	257.6	660.2	537.5	122.68	5.381			
10,500.0	7,303.5	10,485.1	7,303.5	63.5	63.2	90.00	3,158.0	258.0	660.2	533.8	126.38	5.224			
10,600.0	7,303.1	10,585.1	7,303.1	65.3	65.1	90.00	3,258.0	258.4	660.2	530.1	130.09	5.075			
10,700.0	7,302.8	10,685.1	7,302.8	67.2	66.9	90.00	3,358.0	258.8	660.2	526.4	133.81	4.934			
10,800.0	7,302.4	10,785.1	7,302.4	69.0	68.8	90.00	3,458.0	259.3	660.2	522.6	137.53	4.800			
10,900.0	7,302.1	10,885.1	7,302.1	70.9	70.7	90.00	3,558.0	259.7	660.2	518.9	141.26	4.674			
11,000.0	7,301.7	10,985.1	7,301.7	72.8	72.5	90.00	3,658.0	260.1	660.2	515.2	144.99	4.553			
11,100.0	7,301.4	11,085.1	7,301.4	74.6	74.4	90.00	3,758.0	260.5	660.2	511.5	148.73	4.439			
11,200.0	7,301.0	11,185.1	7,301.0	76.5	76.3	90.00	3,858.0	261.0	660.2	507.7	152.47	4.330			
11,300.0	7,300.7	11,285.1	7,300.7	78.3	78.1	90.00	3,958.0	261.4	660.2	504.0	156.22	4.226			
11,400.0	7,300.3	11,385.1	7,300.3	80.2	80.0	90.00	4,058.0	261.8	660.2	500.2	159.97	4.127			
11,500.0	7,300.0	11,485.1	7,300.0	82.1	81.9	90.00	4,158.0	262.2	660.2	496.5	163.73	4.032			
11,600.0	7,299.6	11,585.1	7,299.6	84.0	83.8	90.00	4,258.0	262.7	660.2	492.7	167.48	3.942			
11,700.0	7,299.3	11,685.1	7,299.3	85.8	85.6	90.00	4,358.0	263.1	660.2	489.0	171.25	3.855			
11,800.0	7,298.9	11,785.1	7,298.9	87.7	87.5	90.00	4,458.0	263.5	660.2	485.2	175.01	3.773			
11,900.0	7,298.6	11,885.1	7,298.6	89.6	89.4	90.00	4,558.0	263.9	660.2	481.5	178.78	3.693			
11,924.9	7,298.5	11,910.0	7,298.5	90.1	89.8	90.00	4,582.9	264.0	660.2	480.6	179.68	3.675 SF			

Company:	Verdad Oil & Gas Corporation	Local Co-ordinate Reference:	Well Meehl 01N-65W-24-1C
Project:	SEC.24-T1N-R65W	TVD Reference:	WELL @ 5038.5ft (RKB - 16.5')
Reference Site:	Meehl 01N-65W-24 Pad Sec.24-T01N-R65W	MD Reference:	WELL @ 5038.5ft (RKB - 16.5')
Site Error:	0.0ft	North Reference:	True
Reference Well:	Meehl 01N-65W-24-1C	Survey Calculation Method:	Minimum Curvature
Well Error:	0.0ft	Output errors are at	2.00 sigma
Reference Wellbore	Wellbore #1	Database:	landmark
Reference Design:	Plan #1 (10-17-14)	Offset TVD Reference:	Offset Datum

Offset Design													Offset Site Error:	0.0ft	
Survey Program: 0-MWD													Offset Well Error:		0.0ft
Reference				Offset			Semi Major Axis			Distance			Warning		
Measured Depth (ft)	Vertical Depth (ft)	Measured Depth (ft)	Vertical Depth (ft)	Reference (ft)	Offset (ft)	Highside Toolface (°)	Offset Wellbore Centre +N/-S (ft)	+E/-W (ft)	Between Centres (ft)	Between Ellipses (ft)	Minimum Separation (ft)	Separation Factor			
0.0	0.0	0.0	0.0	0.0	0.0	89.77	0.3	75.1	75.1						
100.0	100.0	100.0	100.0	0.1	0.1	89.77	0.3	75.1	75.1	74.8	0.22	333.908			
200.0	200.0	200.0	200.0	0.3	0.3	89.77	0.3	75.1	75.1	74.4	0.67	111.303	CC, ES		
300.0	300.0	300.0	300.0	0.5	0.6	-152.91	0.3	75.1	76.6	75.5	1.11	68.847			
400.0	399.8	399.8	399.8	0.8	0.8	-154.54	0.3	75.1	81.3	79.7	1.55	52.303			
500.0	499.5	499.5	499.5	1.0	1.0	-156.89	0.3	75.1	89.2	87.2	2.01	44.415			
600.0	598.7	598.7	598.7	1.3	1.2	-159.51	0.3	75.1	100.3	97.8	2.47	40.657			
700.0	698.0	698.0	698.0	1.6	1.5	-161.74	0.3	75.1	112.1	109.2	2.92	38.365			
800.0	797.2	797.2	797.2	1.9	1.7	-163.55	0.3	75.1	124.0	120.7	3.38	36.707			
900.0	896.4	896.4	896.4	2.2	1.9	-165.04	0.3	75.1	136.1	132.3	3.84	35.460			
1,000.0	995.6	995.6	995.6	2.6	2.1	-166.29	0.3	75.1	148.2	143.9	4.30	34.491			
1,100.0	1,094.8	1,094.8	1,094.8	2.9	2.3	-167.35	0.3	75.1	160.4	155.6	4.76	33.718			
1,200.0	1,194.0	1,194.0	1,194.0	3.2	2.6	-168.25	0.3	75.1	172.6	167.4	5.22	33.088			
1,300.0	1,293.3	1,293.3	1,293.3	3.5	2.8	-169.04	0.3	75.1	184.9	179.2	5.68	32.564			
1,400.0	1,392.5	1,392.5	1,392.5	3.9	3.0	-169.73	0.3	75.1	197.1	191.0	6.14	32.123			
1,500.0	1,491.7	1,487.7	1,487.7	4.2	3.2	-170.03	-0.4	76.2	210.3	203.8	6.57	31.997			
1,600.0	1,590.9	1,582.0	1,581.9	4.5	3.4	-169.66	-2.9	79.9	225.6	218.6	7.00	32.225			
1,700.0	1,690.1	1,675.6	1,675.1	4.9	3.6	-168.77	-7.0	86.1	242.9	235.4	7.43	32.668			
1,800.0	1,789.3	1,768.2	1,767.2	5.2	3.8	-167.49	-12.7	94.8	262.3	254.4	7.88	33.274			
1,900.0	1,888.5	1,863.2	1,861.2	5.5	4.0	-165.96	-20.0	105.8	283.7	275.3	8.35	33.962			
2,000.0	1,987.8	1,960.5	1,957.6	5.8	4.2	-164.58	-27.5	117.3	305.4	296.5	8.84	34.562			
2,100.0	2,087.0	2,057.9	2,054.0	6.2	4.5	-163.37	-35.1	128.9	327.2	317.9	9.33	35.090			
2,200.0	2,186.2	2,155.3	2,150.4	6.5	4.8	-162.32	-42.7	140.4	349.2	339.4	9.82	35.551			
2,300.0	2,285.4	2,252.6	2,246.8	6.8	5.1	-161.39	-50.3	151.9	371.3	361.0	10.33	35.958			
2,400.0	2,384.6	2,350.0	2,343.2	7.2	5.3	-160.56	-57.9	163.4	393.5	382.6	10.83	36.320			
2,500.0	2,483.8	2,447.4	2,439.5	7.5	5.6	-159.83	-65.5	174.9	415.7	404.4	11.34	36.644			
2,600.0	2,583.1	2,544.7	2,535.9	7.8	5.9	-159.17	-73.1	186.5	438.0	426.2	11.86	36.935			
2,700.0	2,682.3	2,642.1	2,632.3	8.2	6.2	-158.57	-80.7	198.0	460.4	448.0	12.38	37.198			
2,800.0	2,781.5	2,739.5	2,728.7	8.5	6.5	-158.02	-88.2	209.5	482.8	469.9	12.90	37.436			
2,900.0	2,880.7	2,836.8	2,825.1	8.8	6.9	-157.53	-95.8	221.0	505.2	491.8	13.42	37.654			
3,000.0	2,979.9	2,934.2	2,921.4	9.1	7.2	-157.08	-103.4	232.6	527.6	513.7	13.94	37.853			
3,100.0	3,079.1	3,031.5	3,017.8	9.5	7.5	-156.66	-111.0	244.1	550.1	535.7	14.46	38.035			
3,200.0	3,178.4	3,128.9	3,114.2	9.8	7.8	-156.28	-118.6	255.6	572.7	557.7	14.99	38.204			
3,300.0	3,277.6	3,226.3	3,210.6	10.1	8.1	-155.92	-126.2	267.1	595.2	579.7	15.52	38.359			
3,400.0	3,376.8	3,323.6	3,307.0	10.5	8.5	-155.60	-133.8	278.7	617.8	601.7	16.04	38.504			
3,500.0	3,476.0	3,421.0	3,403.3	10.8	8.8	-155.29	-141.4	290.2	640.3	623.8	16.57	38.638			
3,600.0	3,575.2	3,518.4	3,499.7	11.1	9.1	-155.01	-148.9	301.7	662.9	645.8	17.10	38.763			
3,700.0	3,674.4	3,615.7	3,596.1	11.5	9.4	-154.74	-156.5	313.2	685.5	667.9	17.63	38.879			
3,800.0	3,773.6	3,713.1	3,692.5	11.8	9.8	-154.49	-164.1	324.7	708.1	690.0	18.16	38.988			
3,900.0	3,872.9	3,810.5	3,788.9	12.1	10.1	-154.26	-171.7	336.3	730.8	712.1	18.69	39.091			
4,000.0	3,972.1	3,907.8	3,885.3	12.4	10.4	-154.09	-179.3	347.8	753.3	734.1	19.23	39.176			
4,100.0	4,071.6	4,005.7	3,982.1	12.7	10.8	-153.97	-186.9	359.4	773.5	753.8	19.72	39.227			
4,200.0	4,171.4	4,104.1	4,079.5	12.8	11.1	-153.73	-194.6	371.0	790.6	770.4	20.19	39.168			
4,300.0	4,271.4	4,202.8	4,177.3	13.0	11.4	-153.36	-202.3	382.7	804.7	784.1	20.63	39.011			
4,400.0	4,371.4	4,327.2	4,300.7	13.1	11.8	89.31	-210.9	395.8	815.3	794.2	21.10	38.635			
4,500.0	4,471.4	4,458.0	4,431.0	13.3	12.1	89.73	-216.8	404.7	822.1	800.6	21.53	38.177			
4,600.0	4,571.4	4,589.4	4,562.3	13.4	12.3	89.91	-219.4	408.6	825.1	803.1	21.94	37.599			
4,700.0	4,671.4	4,698.5	4,671.4	13.5	12.5	89.92	-219.5	408.9	825.3	802.9	22.31	36.986			
4,800.0	4,771.4	4,798.5	4,771.4	13.7	12.7	89.92	-219.5	408.9	825.3	802.6	22.67	36.407			
4,900.0	4,871.4	4,898.5	4,871.4	13.8	12.8	89.92	-219.5	408.9	825.3	802.2	23.03	35.841			
5,000.0	4,971.4	4,998.5	4,971.4	14.0	13.0	89.92	-219.5	408.9	825.3	801.9	23.39	35.288			
5,100.0	5,071.4	5,098.5	5,071.4	14.2	13.2	89.92	-219.5	408.9	825.3	801.5	23.75	34.747			

CC - Min centre to center distance or convergent point, SF - min separation factor, ES - min ellipse separation

Company:	Verdad Oil & Gas Corporation	Local Co-ordinate Reference:	Well Meehl 01N-65W-24-1C
Project:	SEC.24-T1N-R65W	TVD Reference:	WELL @ 5038.5ft (RKB - 16.5')
Reference Site:	Meehl 01N-65W-24 Pad Sec.24-T01N-R65W	MD Reference:	WELL @ 5038.5ft (RKB - 16.5')
Site Error:	0.0ft	North Reference:	True
Reference Well:	Meehl 01N-65W-24-1C	Survey Calculation Method:	Minimum Curvature
Well Error:	0.0ft	Output errors are at	2.00 sigma
Reference Wellbore	Wellbore #1	Database:	landmark
Reference Design:	Plan #1 (10-17-14)	Offset TVD Reference:	Offset Datum

Offset Design													Offset Site Error:	0.0ft	
Survey Program: 0-MWD													Offset Well Error:		0.0ft
Reference		Offset		Semi Major Axis			Distance						Warning		
Measured Depth (ft)	Vertical Depth (ft)	Measured Depth (ft)	Vertical Depth (ft)	Reference (ft)	Offset (ft)	Highside Toolface (°)	Offset Wellbore Centre +N/-S (ft)	+E/-W (ft)	Between Centres (ft)	Between Ellipses (ft)	Minimum Separation (ft)	Separation Factor			
5,200.0	5,171.4	5,198.5	5,171.4	14.3	13.3	89.92	-219.5	408.9	825.3	801.1	24.12	34.218			
5,300.0	5,271.4	5,298.5	5,271.4	14.5	13.5	89.92	-219.5	408.9	825.3	800.8	24.49	33.702			
5,400.0	5,371.4	5,398.5	5,371.4	14.6	13.7	89.92	-219.5	408.9	825.3	800.4	24.86	33.197			
5,500.0	5,471.4	5,498.5	5,471.4	14.8	13.9	89.92	-219.5	408.9	825.3	800.0	25.23	32.704			
5,600.0	5,571.4	5,598.5	5,571.4	14.9	14.0	89.92	-219.5	408.9	825.3	799.6	25.61	32.222			
5,700.0	5,671.4	5,698.5	5,671.4	15.1	14.2	89.92	-219.5	408.9	825.3	799.3	25.99	31.751			
5,800.0	5,771.4	5,798.5	5,771.4	15.3	14.4	89.92	-219.5	408.9	825.3	798.9	26.37	31.292			
5,900.0	5,871.4	5,898.5	5,871.4	15.4	14.6	89.92	-219.5	408.9	825.3	798.5	26.76	30.843			
6,000.0	5,971.4	5,998.5	5,971.4	15.6	14.8	89.92	-219.5	408.9	825.3	798.1	27.14	30.404			
6,100.0	6,071.4	6,098.5	6,071.4	15.8	14.9	89.92	-219.5	408.9	825.3	797.7	27.53	29.976			
6,200.0	6,171.4	6,198.5	6,171.4	16.0	15.1	89.92	-219.5	408.9	825.3	797.3	27.92	29.558			
6,300.0	6,271.4	6,298.5	6,271.4	16.1	15.3	89.92	-219.5	408.9	825.3	796.9	28.31	29.149			
6,400.0	6,371.4	6,398.5	6,371.4	16.3	15.5	89.92	-219.5	408.9	825.3	796.5	28.70	28.750			
6,500.0	6,471.4	6,498.5	6,471.4	16.5	15.7	89.92	-219.5	408.9	825.3	796.2	29.10	28.360			
6,600.0	6,571.4	6,598.5	6,571.4	16.6	15.9	89.92	-219.5	408.9	825.3	795.8	29.50	27.979			
6,617.8	6,589.2	6,616.3	6,589.2	16.7	15.9	89.92	-219.5	408.9	825.3	795.7	29.57	27.912			
6,700.0	6,671.4	6,697.2	6,669.8	16.8	16.1	89.53	-213.8	408.9	825.3	795.4	29.86	27.637			
6,800.0	6,771.4	6,790.5	6,760.4	17.0	16.2	88.00	-191.8	409.0	825.9	795.8	30.14	27.401			
6,900.0	6,871.1	6,876.0	6,838.8	17.2	16.2	85.53	-157.8	409.1	828.1	797.7	30.34	27.291			
7,000.0	6,967.9	6,957.6	6,907.4	17.3	16.2	83.39	-113.8	409.3	831.3	800.9	30.45	27.303			
7,100.0	7,058.3	7,036.3	6,966.2	17.3	16.2	81.46	-61.7	409.5	835.2	804.7	30.50	27.379			
7,200.0	7,138.9	7,112.7	7,015.3	17.3	16.3	79.79	-3.2	409.8	839.2	808.6	30.57	27.448			
7,300.0	7,206.7	7,187.5	7,054.6	17.3	16.3	78.41	60.4	410.0	842.9	812.2	30.74	27.424			
7,400.0	7,259.4	7,261.1	7,083.9	17.3	16.3	77.38	127.8	410.3	846.0	814.9	31.08	27.215			
7,500.0	7,294.9	7,333.9	7,103.3	17.4	16.5	76.70	197.9	410.6	848.1	816.4	31.70	26.757			
7,600.0	7,312.0	7,406.3	7,112.7	17.8	16.9	76.40	269.6	410.9	849.0	816.4	32.61	26.032			
7,700.0	7,313.2	7,493.2	7,113.4	18.4	17.5	76.39	356.5	411.3	849.1	815.1	33.97	24.993			
7,800.0	7,312.9	7,593.2	7,112.9	19.2	18.5	76.38	456.5	411.7	849.1	813.3	35.76	23.747			
7,900.0	7,312.5	7,693.2	7,112.5	20.3	19.5	76.37	556.5	412.1	849.1	811.3	37.82	22.449			
8,000.0	7,312.2	7,793.2	7,112.0	21.4	20.7	76.36	656.5	412.5	849.2	809.0	40.13	21.158			
8,100.0	7,311.9	7,893.2	7,111.5	22.7	22.0	76.36	756.5	412.9	849.2	806.5	42.65	19.912			
8,200.0	7,311.5	7,993.2	7,111.1	24.0	23.4	76.35	856.5	413.4	849.2	803.9	45.33	18.735			
8,300.0	7,311.2	8,093.2	7,110.6	25.4	24.8	76.34	956.5	413.8	849.2	801.1	48.15	17.637			
8,400.0	7,310.8	8,193.2	7,110.1	26.9	26.3	76.33	1,056.5	414.2	849.3	798.2	51.09	16.623			
8,500.0	7,310.5	8,293.2	7,109.6	28.4	27.9	76.32	1,156.5	414.6	849.3	795.2	54.13	15.691			
8,600.0	7,310.1	8,393.2	7,109.2	30.0	29.5	76.32	1,256.5	415.0	849.3	792.1	57.25	14.836			
8,700.0	7,309.8	8,493.2	7,108.7	31.6	31.1	76.31	1,356.5	415.4	849.3	788.9	60.44	14.054			
8,800.0	7,309.4	8,593.2	7,108.2	33.2	32.8	76.30	1,456.5	415.9	849.4	785.7	63.68	13.337			
8,900.0	7,309.1	8,693.2	7,107.8	34.9	34.5	76.29	1,556.5	416.3	849.4	782.4	66.98	12.681			
9,000.0	7,308.7	8,793.2	7,107.3	36.6	36.2	76.28	1,656.5	416.7	849.4	779.1	70.32	12.079			
9,100.0	7,308.4	8,893.2	7,106.8	38.3	37.9	76.27	1,756.4	417.1	849.5	775.8	73.70	11.525			
9,200.0	7,308.0	8,993.2	7,106.3	40.0	39.6	76.27	1,856.4	417.5	849.5	772.4	77.12	11.016			
9,300.0	7,307.7	9,093.2	7,105.9	41.8	41.4	76.26	1,956.4	418.0	849.5	769.0	80.56	10.545			
9,400.0	7,307.3	9,193.2	7,105.4	43.5	43.2	76.25	2,056.4	418.4	849.5	765.5	84.02	10.111			
9,500.0	7,307.0	9,293.2	7,104.9	45.3	45.0	76.24	2,156.4	418.8	849.6	762.1	87.51	9.708			
9,600.0	7,306.6	9,393.2	7,104.5	47.1	46.8	76.23	2,256.4	419.2	849.6	758.6	91.02	9.335			
9,700.0	7,306.3	9,493.2	7,104.0	48.9	48.6	76.23	2,356.4	419.6	849.6	755.1	94.54	8.987			
9,800.0	7,305.9	9,593.2	7,103.5	50.7	50.4	76.22	2,456.4	420.1	849.6	751.6	98.08	8.663			
9,900.0	7,305.6	9,693.2	7,103.0	52.5	52.2	76.21	2,556.4	420.5	849.7	748.0	101.63	8.360			
10,000.0	7,305.2	9,793.2	7,102.6	54.3	54.0	76.20	2,656.4	420.9	849.7	744.5	105.20	8.077			
10,100.0	7,304.9	9,893.2	7,102.1	56.1	55.8	76.19	2,756.4	421.3	849.7	741.0	108.77	7.812			
10,200.0	7,304.5	9,993.2	7,101.6	58.0	57.7	76.19	2,856.4	421.7	849.8	737.4	112.36	7.563			

CC - Min centre to center distance or convergent point, SF - min separation factor, ES - min ellipse separation

Company:	Verdad Oil & Gas Corporation	Local Co-ordinate Reference:	Well Meehl 01N-65W-24-1C
Project:	SEC.24-T1N-R65W	TVD Reference:	WELL @ 5038.5ft (RKB - 16.5')
Reference Site:	Meehl 01N-65W-24 Pad Sec.24-T01N-R65W	MD Reference:	WELL @ 5038.5ft (RKB - 16.5')
Site Error:	0.0ft	North Reference:	True
Reference Well:	Meehl 01N-65W-24-1C	Survey Calculation Method:	Minimum Curvature
Well Error:	0.0ft	Output errors are at	2.00 sigma
Reference Wellbore	Wellbore #1	Database:	landmark
Reference Design:	Plan #1 (10-17-14)	Offset TVD Reference:	Offset Datum

Offset Design													Offset Site Error:	0.0 ft	
Survey Program: 0-MWD													Offset Well Error:		0.0 ft
Reference		Offset		Semi Major Axis			Distance						Warning		
Measured Depth (ft)	Vertical Depth (ft)	Measured Depth (ft)	Vertical Depth (ft)	Reference (ft)	Offset (ft)	Highside Toolface (°)	Offset Wellbore Centre +N/-S (ft)	+E/-W (ft)	Between Centres (ft)	Between Ellipses (ft)	Minimum Separation (ft)	Separation Factor			
10,300.0	7,304.2	10,093.2	7,101.2	59.8	59.5	76.18	2,956.4	422.1	849.8	733.8	115.95	7.329			
10,400.0	7,303.8	10,193.2	7,100.7	61.6	61.4	76.17	3,056.4	422.6	849.8	730.3	119.55	7.108			
10,500.0	7,303.5	10,293.2	7,100.2	63.5	63.2	76.16	3,156.4	423.0	849.8	726.7	123.16	6.900			
10,600.0	7,303.1	10,393.2	7,099.7	65.3	65.1	76.15	3,256.4	423.4	849.9	723.1	126.78	6.703			
10,700.0	7,302.8	10,493.2	7,099.3	67.2	66.9	76.15	3,356.4	423.8	849.9	719.5	130.40	6.517			
10,800.0	7,302.4	10,593.2	7,098.8	69.0	68.8	76.14	3,456.4	424.2	849.9	715.9	134.03	6.341			
10,900.0	7,302.1	10,693.2	7,098.3	70.9	70.7	76.13	3,556.4	424.7	849.9	712.3	137.67	6.174			
11,000.0	7,301.7	10,793.2	7,097.9	72.8	72.5	76.12	3,656.4	425.1	850.0	708.7	141.31	6.015			
11,100.0	7,301.4	10,893.2	7,097.4	74.6	74.4	76.11	3,756.4	425.5	850.0	705.1	144.95	5.864			
11,200.0	7,301.0	10,993.2	7,096.9	76.5	76.3	76.11	3,856.4	425.9	850.0	701.4	148.60	5.720			
11,300.0	7,300.7	11,093.2	7,096.4	78.3	78.1	76.10	3,956.4	426.3	850.1	697.8	152.25	5.583			
11,400.0	7,300.3	11,193.2	7,096.0	80.2	80.0	76.09	4,056.4	426.8	850.1	694.2	155.90	5.453			
11,500.0	7,300.0	11,293.2	7,095.5	82.1	81.9	76.08	4,156.4	427.2	850.1	690.6	159.56	5.328			
11,600.0	7,299.6	11,393.2	7,095.0	84.0	83.8	76.07	4,256.4	427.6	850.1	686.9	163.22	5.209			
11,700.0	7,299.3	11,493.2	7,094.6	85.8	85.6	76.07	4,356.4	428.0	850.2	683.3	166.88	5.094			
11,800.0	7,298.9	11,593.2	7,094.1	87.7	87.5	76.06	4,456.4	428.4	850.2	679.6	170.55	4.985			
11,900.0	7,298.6	11,693.2	7,093.6	89.6	89.4	76.05	4,556.4	428.8	850.2	676.0	174.22	4.880			
11,924.9	7,298.5	11,718.0	7,093.5	90.1	89.8	76.05	4,581.3	429.0	850.2	675.2	175.06	4.857 SF			

Company:	Verdad Oil & Gas Corporation	Local Co-ordinate Reference:	Well Meehl 01N-65W-24-1C
Project:	SEC.24-T1N-R65W	TVD Reference:	WELL @ 5038.5ft (RKB - 16.5')
Reference Site:	Meehl 01N-65W-24 Pad Sec.24-T01N-R65W	MD Reference:	WELL @ 5038.5ft (RKB - 16.5')
Site Error:	0.0ft	North Reference:	True
Reference Well:	Meehl 01N-65W-24-1C	Survey Calculation Method:	Minimum Curvature
Well Error:	0.0ft	Output errors are at	2.00 sigma
Reference Wellbore	Wellbore #1	Database:	landmark
Reference Design:	Plan #1 (10-17-14)	Offset TVD Reference:	Offset Datum

Offset Design													Offset Site Error:	0.0ft	
Survey Program: 0-MWD													Offset Well Error:		0.0ft
Reference				Offset			Semi Major Axis			Distance				Warning	
Measured Depth (ft)	Vertical Depth (ft)	Measured Depth (ft)	Vertical Depth (ft)	Reference (ft)	Offset (ft)	Highside Toolface (°)	Offset Wellbore Centre +N/-S (ft)	+E/-W (ft)	Between Centres (ft)	Between Ellipses (ft)	Minimum Separation (ft)	Separation Factor			
0.0	0.0	0.0	0.0	0.0	0.0	89.79	0.3	90.2	90.2						
100.0	100.0	100.0	100.0	0.1	0.1	89.79	0.3	90.2	90.2	89.9	0.22	401.188			
200.0	200.0	200.0	200.0	0.3	0.3	89.79	0.3	90.2	90.2	89.5	0.67	133.729	CC, ES		
300.0	300.0	300.0	300.0	0.5	0.6	-152.79	0.3	90.2	91.7	90.6	1.11	82.438			
400.0	399.8	399.8	399.8	0.8	0.8	-154.17	0.3	90.2	96.4	94.9	1.55	62.027			
500.0	499.5	499.5	499.5	1.0	1.0	-156.19	0.3	90.2	104.3	102.3	2.01	51.915			
600.0	598.7	598.7	598.7	1.3	1.2	-158.53	0.3	90.2	115.3	112.8	2.47	46.724			
700.0	698.0	698.0	698.0	1.6	1.5	-160.59	0.3	90.2	127.0	124.1	2.92	43.443			
800.0	797.2	797.2	797.2	1.9	1.7	-162.30	0.3	90.2	138.9	135.5	3.38	41.061			
900.0	896.4	896.4	896.4	2.2	1.9	-163.75	0.3	90.2	150.9	147.0	3.84	39.264			
1,000.0	995.6	995.6	995.6	2.6	2.1	-164.98	0.3	90.2	162.9	158.6	4.30	37.864			
1,100.0	1,094.8	1,094.8	1,094.8	2.9	2.3	-166.04	0.3	90.2	175.0	170.3	4.76	36.746			
1,200.0	1,194.0	1,194.0	1,194.0	3.2	2.6	-166.96	0.3	90.2	187.2	182.0	5.22	35.833			
1,300.0	1,293.3	1,288.5	1,288.5	3.5	2.8	-167.48	-0.2	91.4	200.5	194.8	5.66	35.417			
1,400.0	1,392.5	1,382.0	1,381.9	3.9	2.9	-167.40	-2.1	95.4	216.3	210.2	6.09	35.515			
1,500.0	1,491.7	1,474.7	1,474.3	4.2	3.1	-166.85	-5.1	102.2	234.5	228.0	6.53	35.939			
1,600.0	1,590.9	1,566.4	1,565.4	4.5	3.3	-165.96	-9.3	111.5	255.3	248.3	6.97	36.609			
1,700.0	1,690.1	1,656.8	1,654.9	4.9	3.6	-164.83	-14.7	123.3	278.6	271.1	7.43	37.477			
1,800.0	1,789.3	1,749.6	1,746.3	5.2	3.8	-163.54	-21.2	137.7	304.1	296.2	7.91	38.443			
1,900.0	1,888.5	1,846.0	1,841.2	5.5	4.1	-162.37	-28.2	153.0	330.1	321.7	8.40	39.285			
2,000.0	1,987.8	1,942.3	1,936.1	5.8	4.4	-161.37	-35.1	168.3	356.2	347.3	8.90	40.026			
2,100.0	2,087.0	2,038.7	2,031.0	6.2	4.7	-160.51	-42.1	183.6	382.4	373.0	9.40	40.665			
2,200.0	2,186.2	2,135.0	2,125.8	6.5	5.1	-159.75	-49.0	198.9	408.6	398.7	9.91	41.237			
2,300.0	2,285.4	2,231.4	2,220.7	6.8	5.4	-159.09	-56.0	214.3	435.0	424.5	10.42	41.741			
2,400.0	2,384.6	2,327.8	2,315.6	7.2	5.7	-158.50	-62.9	229.6	461.3	450.4	10.93	42.190			
2,500.0	2,483.8	2,424.1	2,410.5	7.5	6.1	-157.98	-69.9	244.9	487.7	476.3	11.45	42.593			
2,600.0	2,583.1	2,520.5	2,505.4	7.8	6.4	-157.51	-76.8	260.2	514.2	502.2	11.97	42.956			
2,700.0	2,682.3	2,616.8	2,600.2	8.2	6.8	-157.08	-83.8	275.5	540.6	528.1	12.49	43.284			
2,800.0	2,781.5	2,713.2	2,695.1	8.5	7.2	-156.70	-90.7	290.8	567.1	554.1	13.01	43.583			
2,900.0	2,880.7	2,809.6	2,790.0	8.8	7.5	-156.35	-97.7	306.1	593.6	580.1	13.54	43.856			
3,000.0	2,979.9	2,905.9	2,884.9	9.1	7.9	-156.03	-104.6	321.5	620.2	606.1	14.06	44.106			
3,100.0	3,079.1	3,002.3	2,979.8	9.5	8.3	-155.74	-111.5	336.8	646.7	632.1	14.59	44.336			
3,200.0	3,178.4	3,098.6	3,074.6	9.8	8.6	-155.46	-118.5	352.1	673.3	658.2	15.11	44.548			
3,300.0	3,277.6	3,195.0	3,169.5	10.1	9.0	-155.21	-125.4	367.4	699.9	684.2	15.64	44.744			
3,400.0	3,376.8	3,291.4	3,264.4	10.5	9.4	-154.98	-132.4	382.7	726.5	710.3	16.17	44.926			
3,500.0	3,476.0	3,387.7	3,359.3	10.8	9.7	-154.77	-139.3	398.0	753.1	736.4	16.70	45.096			
3,600.0	3,575.2	3,484.1	3,454.2	11.1	10.1	-154.57	-146.3	413.3	779.7	762.5	17.23	45.253			
3,700.0	3,674.4	3,580.4	3,549.0	11.5	10.5	-154.38	-153.2	428.7	806.3	788.5	17.76	45.401			
3,800.0	3,773.6	3,676.8	3,643.9	11.8	10.9	-154.20	-160.2	444.0	832.9	814.6	18.29	45.539			
3,900.0	3,872.9	3,773.2	3,738.8	12.1	11.3	-154.04	-167.1	459.3	859.6	840.7	18.82	45.669			
4,000.0	3,972.1	3,869.6	3,833.7	12.4	11.6	-153.95	-174.1	474.6	886.1	866.7	19.36	45.771			
4,100.0	4,071.6	3,966.5	3,929.2	12.7	12.0	-153.94	-181.1	490.0	910.3	890.4	19.86	45.836			
4,200.0	4,171.4	4,064.1	4,025.3	12.8	12.4	-153.82	-188.1	505.5	931.4	911.1	20.34	45.802			
4,300.0	4,271.4	4,162.3	4,121.9	13.0	12.8	-153.59	-195.2	521.1	949.6	928.8	20.79	45.681			
4,400.0	4,371.4	4,269.1	4,227.2	13.1	13.2	88.93	-202.8	538.0	965.4	944.1	21.25	45.420			
4,500.0	4,471.4	4,412.1	4,368.7	13.3	13.6	89.44	-211.1	556.3	978.1	956.4	21.73	45.008			
4,600.0	4,571.4	4,556.7	4,512.8	13.4	13.9	89.76	-216.5	568.2	986.3	964.2	22.18	44.470			
4,700.0	4,671.4	4,702.4	4,658.2	13.5	14.2	89.90	-218.9	573.5	990.0	967.4	22.61	43.786			
4,800.0	4,771.4	4,815.5	4,771.4	13.7	14.3	89.91	-219.1	573.8	990.2	967.2	22.98	43.087			
4,900.0	4,871.4	4,915.5	4,871.4	13.8	14.5	89.91	-219.1	573.8	990.2	966.8	23.33	42.436			
5,000.0	4,971.4	5,015.5	4,971.4	14.0	14.6	89.91	-219.1	573.8	990.2	966.5	23.69	41.798			
5,100.0	5,071.4	5,115.5	5,071.4	14.2	14.8	89.91	-219.1	573.8	990.2	966.1	24.05	41.174			

CC - Min centre to center distance or convergent point, SF - min separation factor, ES - min ellipse separation

Company:	Verdad Oil & Gas Corporation	Local Co-ordinate Reference:	Well Meehl 01N-65W-24-1C
Project:	SEC.24-T1N-R65W	TVD Reference:	WELL @ 5038.5ft (RKB - 16.5')
Reference Site:	Meehl 01N-65W-24 Pad Sec.24-T01N-R65W	MD Reference:	WELL @ 5038.5ft (RKB - 16.5')
Site Error:	0.0ft	North Reference:	True
Reference Well:	Meehl 01N-65W-24-1C	Survey Calculation Method:	Minimum Curvature
Well Error:	0.0ft	Output errors are at	2.00 sigma
Reference Wellbore	Wellbore #1	Database:	landmark
Reference Design:	Plan #1 (10-17-14)	Offset TVD Reference:	Offset Datum

Offset Design													Offset Site Error:	0.0 ft	
Survey Program: 0-MWD													Offset Well Error:		0.0 ft
Reference		Offset		Semi Major Axis			Distance						Warning		
Measured Depth (ft)	Vertical Depth (ft)	Measured Depth (ft)	Vertical Depth (ft)	Reference (ft)	Offset (ft)	Highside Toolface (°)	Offset Wellbore Centre +N/-S (ft)	+E/-W (ft)	Between Centres (ft)	Between Ellipses (ft)	Minimum Separation (ft)	Separation Factor			
5,200.0	5,171.4	5,215.5	5,171.4	14.3	14.9	89.91	-219.1	573.8	990.2	965.8	24.41	40.563			
5,300.0	5,271.4	5,315.5	5,271.4	14.5	15.1	89.91	-219.1	573.8	990.2	965.4	24.78	39.965			
5,400.0	5,371.4	5,415.5	5,371.4	14.6	15.3	89.91	-219.1	573.8	990.2	965.0	25.14	39.381			
5,500.0	5,471.4	5,515.5	5,471.4	14.8	15.4	89.91	-219.1	573.8	990.2	964.7	25.51	38.809			
5,600.0	5,571.4	5,615.5	5,571.4	14.9	15.6	89.91	-219.1	573.8	990.2	964.3	25.89	38.250			
5,700.0	5,671.4	5,715.5	5,671.4	15.1	15.7	89.91	-219.1	573.8	990.2	963.9	26.26	37.703			
5,800.0	5,771.4	5,815.5	5,771.4	15.3	15.9	89.91	-219.1	573.8	990.2	963.5	26.64	37.169			
5,900.0	5,871.4	5,915.5	5,871.4	15.4	16.1	89.91	-219.1	573.8	990.2	963.2	27.02	36.647			
6,000.0	5,971.4	6,015.5	5,971.4	15.6	16.2	89.91	-219.1	573.8	990.2	962.8	27.40	36.136			
6,100.0	6,071.4	6,115.5	6,071.4	15.8	16.4	89.91	-219.1	573.8	990.2	962.4	27.79	35.637			
6,200.0	6,171.4	6,215.5	6,171.4	16.0	16.6	89.91	-219.1	573.8	990.2	962.0	28.17	35.149			
6,300.0	6,271.4	6,315.5	6,271.4	16.1	16.8	89.91	-219.1	573.8	990.2	961.6	28.56	34.671			
6,400.0	6,371.4	6,415.5	6,371.4	16.3	16.9	89.91	-219.1	573.8	990.2	961.2	28.95	34.205			
6,500.0	6,471.4	6,515.5	6,471.4	16.5	17.1	89.91	-219.1	573.8	990.2	960.8	29.34	33.749			
6,600.0	6,571.4	6,615.5	6,571.4	16.6	17.3	89.91	-219.1	573.8	990.2	960.4	29.73	33.303			
6,613.7	6,585.1	6,629.2	6,585.1	16.7	17.3	89.91	-219.1	573.8	990.2	960.4	29.79	33.242			
6,700.0	6,671.4	6,714.1	6,669.7	16.8	17.4	89.58	-213.4	573.8	990.2	960.1	30.10	32.900			
6,800.0	6,771.4	6,807.2	6,760.1	17.0	17.5	88.32	-191.5	573.9	990.8	960.4	30.39	32.598			
6,900.0	6,871.1	6,892.6	6,838.3	17.2	17.6	86.22	-157.6	574.0	992.6	962.0	30.61	32.424			
7,000.0	6,967.9	6,974.1	6,906.9	17.3	17.6	84.43	-113.7	574.2	995.3	964.6	30.74	32.380 SF			
7,100.0	7,058.3	7,050.0	6,963.9	17.3	17.6	82.86	-63.7	574.4	998.5	967.7	30.81	32.408			

Company:	Verdad Oil & Gas Corporation	Local Co-ordinate Reference:	Well Meehl 01N-65W-24-1C
Project:	SEC.24-T1N-R65W	TVD Reference:	WELL @ 5038.5ft (RKB - 16.5')
Reference Site:	Meehl 01N-65W-24 Pad Sec.24-T01N-R65W	MD Reference:	WELL @ 5038.5ft (RKB - 16.5')
Site Error:	0.0ft	North Reference:	True
Reference Well:	Meehl 01N-65W-24-1C	Survey Calculation Method:	Minimum Curvature
Well Error:	0.0ft	Output errors are at	2.00 sigma
Reference Wellbore	Wellbore #1	Database:	landmark
Reference Design:	Plan #1 (10-17-14)	Offset TVD Reference:	Offset Datum

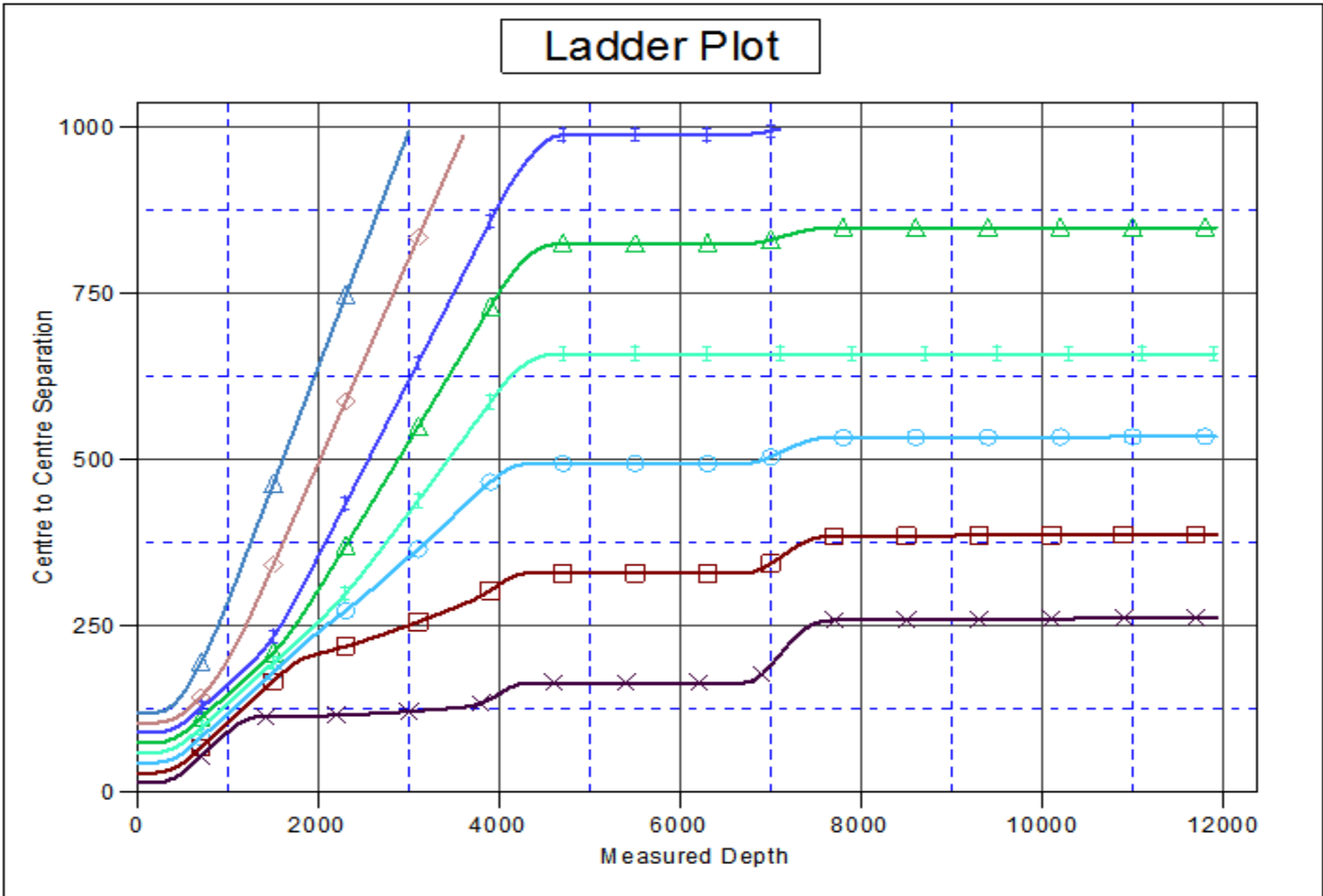
Offset Design													Offset Site Error:	0.0 ft	
Survey Program: 0-MWD													Offset Well Error:		0.0 ft
Reference				Semi Major Axis			Distance						Warning		
Measured Depth (ft)	Vertical Depth (ft)	Measured Depth (ft)	Vertical Depth (ft)	Reference (ft)	Offset (ft)	Highside Toolface (°)	Offset Wellbore Centre +N/-S (ft)	Offset Wellbore Centre +E/-W (ft)	Between Centres (ft)	Between Ellipses (ft)	Minimum Separation (ft)	Separation Factor			
0.0	0.0	0.0	0.0	0.0	0.0	89.82	0.3	105.0	105.0						
100.0	100.0	100.0	100.0	0.1	0.1	89.82	0.3	105.0	105.0	104.8	0.22	467.221			
200.0	200.0	200.0	200.0	0.3	0.3	89.82	0.3	105.0	105.0	104.3	0.67	155.740	CC, ES		
300.0	300.0	300.0	300.0	0.5	0.6	-152.68	0.3	105.0	106.6	105.5	1.11	95.778			
400.0	399.8	399.8	399.8	0.8	0.8	-153.88	0.3	105.0	111.2	109.7	1.55	71.572			
500.0	499.5	499.5	499.5	1.0	1.0	-155.66	0.3	105.0	119.1	117.1	2.01	59.279			
600.0	598.7	598.7	598.7	1.3	1.2	-157.77	0.3	105.0	130.1	127.6	2.47	52.685			
700.0	698.0	693.8	693.8	1.6	1.4	-159.33	-0.2	106.5	143.2	140.3	2.91	49.243			
800.0	797.2	788.0	787.9	1.9	1.6	-160.09	-1.7	110.8	159.2	155.9	3.35	47.589			
900.0	896.4	881.3	880.9	2.2	1.8	-160.25	-4.2	118.1	178.2	174.4	3.79	46.965	SF		
1,000.0	995.6	973.5	972.5	2.6	2.1	-159.96	-7.6	128.0	200.0	195.7	4.25	47.020			
1,100.0	1,094.8	1,064.4	1,062.4	2.9	2.3	-159.39	-12.0	140.5	224.5	219.8	4.72	47.547			
1,200.0	1,194.0	1,153.9	1,150.5	3.2	2.6	-158.63	-17.1	155.5	251.8	246.6	5.20	48.409			
1,300.0	1,293.3	1,244.4	1,239.0	3.5	2.9	-157.77	-23.2	173.1	281.7	276.0	5.70	49.425			
1,400.0	1,392.5	1,339.5	1,331.9	3.9	3.3	-156.97	-29.8	192.2	312.3	306.1	6.20	50.352			
1,500.0	1,491.7	1,434.6	1,424.9	4.2	3.7	-156.32	-36.4	211.3	342.9	336.2	6.71	51.102			
1,600.0	1,590.9	1,529.8	1,517.9	4.5	4.1	-155.78	-43.0	230.4	373.5	366.3	7.22	51.716			
1,700.0	1,690.1	1,624.9	1,610.9	4.9	4.5	-155.32	-49.6	249.5	404.1	396.4	7.74	52.210			
1,800.0	1,789.3	1,720.1	1,703.8	5.2	4.9	-154.92	-56.2	268.6	434.8	426.6	8.26	52.635			
1,900.0	1,888.5	1,815.2	1,796.8	5.5	5.4	-154.58	-62.8	287.7	465.5	456.7	8.78	52.994			
2,000.0	1,987.8	1,910.3	1,889.8	5.8	5.8	-154.28	-69.4	306.8	496.2	486.9	9.31	53.302			
2,100.0	2,087.0	2,005.5	1,982.7	6.2	6.2	-154.01	-76.0	325.9	526.9	517.1	9.84	53.569			
2,200.0	2,186.2	2,100.6	2,075.7	6.5	6.7	-153.77	-82.6	345.0	557.6	547.3	10.36	53.801			
2,300.0	2,285.4	2,195.8	2,168.7	6.8	7.1	-153.56	-89.2	364.1	588.4	577.5	10.89	54.005			
2,400.0	2,384.6	2,290.9	2,261.6	7.2	7.5	-153.37	-95.8	383.2	619.1	607.7	11.43	54.185			
2,500.0	2,483.8	2,386.0	2,354.6	7.5	8.0	-153.20	-102.5	402.3	649.8	637.9	11.96	54.346			
2,600.0	2,583.1	2,481.2	2,447.6	7.8	8.4	-153.04	-109.1	421.4	680.6	668.1	12.49	54.490			
2,700.0	2,682.3	2,576.3	2,540.5	8.2	8.8	-152.89	-115.7	440.5	711.3	698.3	13.02	54.620			
2,800.0	2,781.5	2,671.5	2,633.5	8.5	9.3	-152.76	-122.3	459.6	742.1	728.5	13.56	54.737			
2,900.0	2,880.7	2,766.6	2,726.5	8.8	9.7	-152.64	-128.9	478.7	772.9	758.8	14.09	54.843			
3,000.0	2,979.9	2,861.7	2,819.5	9.1	10.2	-152.53	-135.5	497.8	803.6	789.0	14.63	54.940			
3,100.0	3,079.1	2,956.9	2,912.4	9.5	10.6	-152.42	-142.1	516.9	834.4	819.2	15.16	55.029			
3,200.0	3,178.4	3,052.0	3,005.4	9.8	11.1	-152.33	-148.7	536.0	865.1	849.4	15.70	55.110			
3,300.0	3,277.6	3,147.2	3,098.4	10.1	11.5	-152.24	-155.3	555.1	895.9	879.7	16.23	55.185			
3,400.0	3,376.8	3,242.3	3,191.3	10.5	11.9	-152.15	-161.9	574.2	926.7	909.9	16.77	55.254			
3,500.0	3,476.0	3,337.4	3,284.3	10.8	12.4	-152.08	-168.5	593.3	957.4	940.1	17.31	55.317			
3,600.0	3,575.2	3,432.6	3,377.3	11.1	12.8	-152.00	-175.1	612.4	988.2	970.4	17.85	55.376			

Company:	Verdad Oil & Gas Corporation	Local Co-ordinate Reference:	Well Meehl 01N-65W-24-1C
Project:	SEC.24-T1N-R65W	TVD Reference:	WELL @ 5038.5ft (RKB - 16.5')
Reference Site:	Meehl 01N-65W-24 Pad Sec.24-T01N-R65W	MD Reference:	WELL @ 5038.5ft (RKB - 16.5')
Site Error:	0.0ft	North Reference:	True
Reference Well:	Meehl 01N-65W-24-1C	Survey Calculation Method:	Minimum Curvature
Well Error:	0.0ft	Output errors are at	2.00 sigma
Reference Wellbore	Wellbore #1	Database:	landmark
Reference Design:	Plan #1 (10-17-14)	Offset TVD Reference:	Offset Datum

Offset Design													Offset Site Error:	0.0ft	
Survey Program: 0-MWD													Offset Well Error:		0.0ft
Reference				Offset			Semi Major Axis			Distance			Warning		
Measured Depth (ft)	Vertical Depth (ft)	Measured Depth (ft)	Vertical Depth (ft)	Reference (ft)	Offset (ft)	Highside Toolface (°)	Offset Wellbore Centre +N/-S (ft)	+E/-W (ft)	Between Centres (ft)	Between Ellipses (ft)	Minimum Separation (ft)	Separation Factor			
0.0	0.0	0.0	0.0	0.0	0.0	89.85	0.3	120.1	120.1						
100.0	100.0	100.0	100.0	0.1	0.1	89.85	0.3	120.1	120.1	119.9	0.22	534.500			
200.0	200.0	200.0	200.0	0.3	0.3	89.85	0.3	120.1	120.1	119.5	0.67	178.167	CC, ES		
300.0	300.0	296.0	296.0	0.5	0.5	-152.36	-0.1	121.7	123.3	122.2	1.10	112.447			
400.0	399.8	391.5	391.3	0.8	0.7	-152.71	-1.4	126.3	132.7	131.2	1.54	86.300			
500.0	499.5	485.8	485.3	1.0	1.0	-153.18	-3.5	133.9	148.4	146.4	2.01	73.987			
600.0	598.7	578.5	577.4	1.3	1.2	-153.72	-6.4	144.2	170.0	167.5	2.48	68.503			
700.0	698.0	669.8	667.7	1.6	1.5	-154.01	-10.0	157.1	195.1	192.2	2.96	65.993			
800.0	797.2	759.5	756.0	1.9	1.9	-154.00	-14.4	172.6	223.1	219.7	3.44	64.832			
900.0	896.4	847.7	842.2	2.2	2.2	-153.79	-19.3	190.3	254.0	250.0	3.94	64.536	SF		
1,000.0	995.6	934.1	926.1	2.6	2.6	-153.46	-24.9	210.2	287.5	283.1	4.44	64.766			
1,100.0	1,094.8	1,026.4	1,015.2	2.9	3.1	-153.08	-31.3	233.1	322.9	317.9	4.95	65.165			
1,200.0	1,194.0	1,119.9	1,105.6	3.2	3.6	-152.76	-37.8	256.3	358.2	352.7	5.47	65.504			
1,300.0	1,293.3	1,213.4	1,196.0	3.5	4.1	-152.50	-44.2	279.6	393.6	387.6	5.99	65.728			
1,400.0	1,392.5	1,306.9	1,286.3	3.9	4.6	-152.29	-50.7	302.8	429.0	422.4	6.51	65.846			
1,500.0	1,491.7	1,400.5	1,376.7	4.2	5.1	-152.11	-57.2	326.0	464.3	457.3	7.04	65.932			
1,600.0	1,590.9	1,494.0	1,467.1	4.5	5.6	-151.95	-63.7	349.2	499.7	492.1	7.57	65.979			
1,700.0	1,690.1	1,587.5	1,557.4	4.9	6.2	-151.81	-70.2	372.4	535.1	527.0	8.11	66.002			
1,800.0	1,789.3	1,681.0	1,647.8	5.2	6.7	-151.69	-76.7	395.7	570.5	561.8	8.64	66.010			
1,900.0	1,888.5	1,774.6	1,738.1	5.5	7.2	-151.59	-83.2	418.9	605.8	596.7	9.18	66.007			
2,000.0	1,987.8	1,868.1	1,828.5	5.8	7.7	-151.49	-89.7	442.1	641.2	631.5	9.72	65.996			
2,100.0	2,087.0	1,961.6	1,918.9	6.2	8.2	-151.41	-96.2	465.3	676.6	666.4	10.25	65.980			
2,200.0	2,186.2	2,055.1	2,009.2	6.5	8.7	-151.34	-102.7	488.6	712.0	701.2	10.79	65.960			
2,300.0	2,285.4	2,148.7	2,099.6	6.8	9.2	-151.27	-109.2	511.8	747.4	736.1	11.33	65.938			
2,400.0	2,384.6	2,242.2	2,190.0	7.2	9.8	-151.20	-115.7	535.0	782.8	770.9	11.88	65.914			
2,500.0	2,483.8	2,335.7	2,280.3	7.5	10.3	-151.15	-122.1	558.2	818.2	805.8	12.42	65.889			
2,600.0	2,583.1	2,429.2	2,370.7	7.8	10.8	-151.10	-128.6	581.5	853.6	840.6	12.96	65.864			
2,700.0	2,682.3	2,522.8	2,461.0	8.2	11.3	-151.05	-135.1	604.7	889.0	875.5	13.50	65.839			
2,800.0	2,781.5	2,616.3	2,551.4	8.5	11.8	-151.00	-141.6	627.9	924.4	910.3	14.05	65.813			
2,900.0	2,880.7	2,709.8	2,641.8	8.8	12.4	-150.96	-148.1	651.1	959.7	945.2	14.59	65.788			
3,000.0	2,979.9	2,803.3	2,732.1	9.1	12.9	-150.92	-154.6	674.3	995.1	980.0	15.13	65.764			

Company:	Verdad Oil & Gas Corporation	Local Co-ordinate Reference:	Well Meehl 01N-65W-24-1C
Project:	SEC.24-T1N-R65W	TVD Reference:	WELL @ 5038.5ft (RKB - 16.5')
Reference Site:	Meehl 01N-65W-24 Pad Sec.24-T01N-R65W	MD Reference:	WELL @ 5038.5ft (RKB - 16.5')
Site Error:	0.0ft	North Reference:	True
Reference Well:	Meehl 01N-65W-24-1C	Survey Calculation Method:	Minimum Curvature
Well Error:	0.0ft	Output errors are at	2.00 sigma
Reference Wellbore	Wellbore #1	Database:	landmark
Reference Design:	Plan #1 (10-17-14)	Offset TVD Reference:	Offset Datum

Reference Depths are relative to WELL @ 5038.5ft (RKB - 16.5') Coordinates are relative to: Meehl 01N-65W-24-1C
 Offset Depths are relative to Offset Datum Coordinate System is US State Plane 1983, Colorado Northern Zone
 Central Meridian is -105.500000 ° Grid Convergence at Surface is: 0.58°



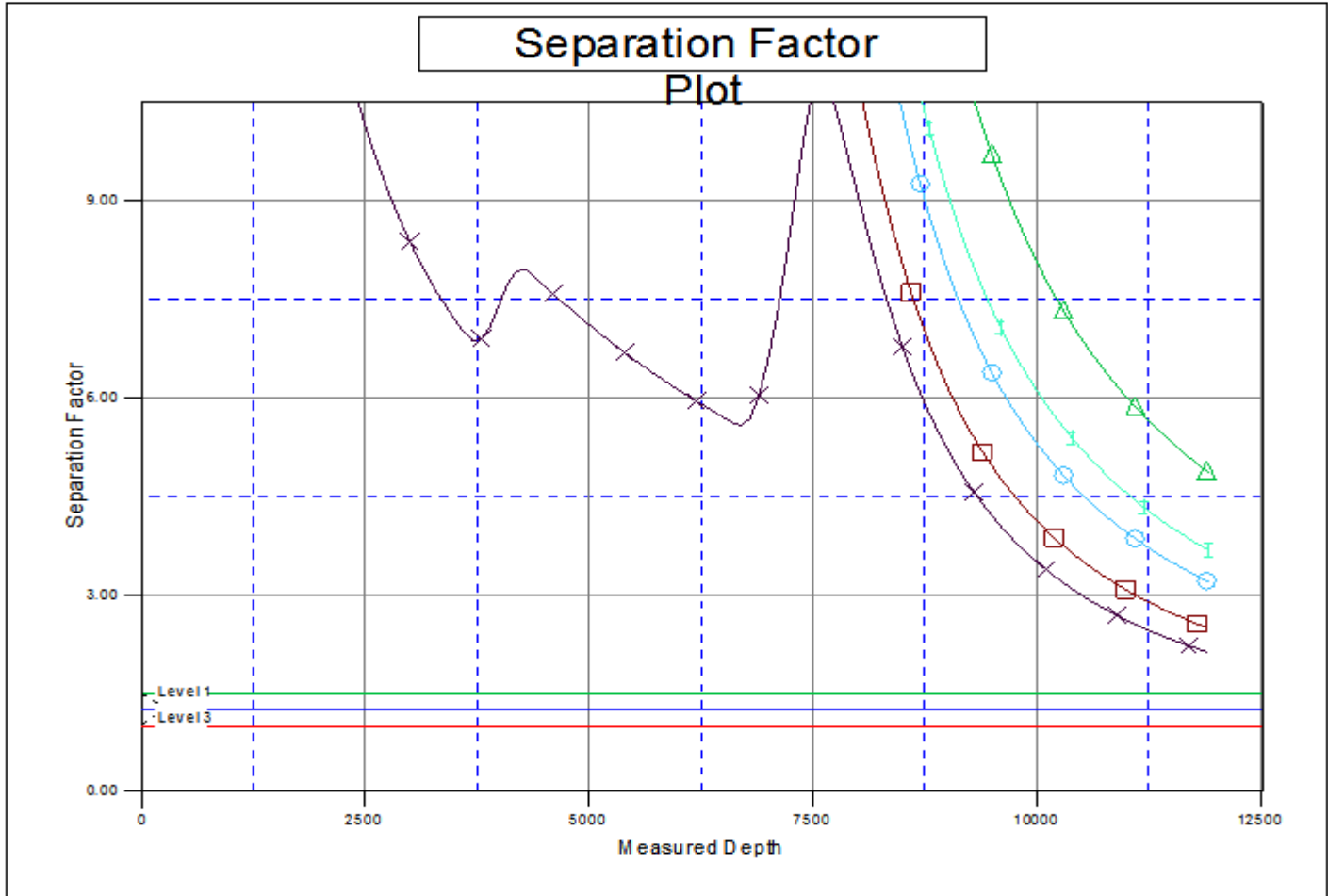
LEGEND

- W-24-2N, Wellbore #1, Plan #1 (10-17-14) V-0 Meehl 01N-65W-24-8N, Wellbore #1, Plan #1 (10-17-14) V-0 Meehl 01N-65W-24-7N, Wellbore #1
- W-24-5C, Wellbore #1, Plan #1 (10-17-14) V-0 Meehl 01N-65W-24-9C, Wellbore #1, Plan #1 (10-17-14) V-0 Meehl 01N-65W-24-3N, Wellbore #1
- W-24-4N, Wellbore #1, Plan #1 (10-17-14) V-0 Meehl 01N-65W-24-8N, Wellbore #1, Plan #1 (10-17-14) V-0

Company:	Verdad Oil & Gas Corporation	Local Co-ordinate Reference:	Well Meehl 01N-65W-24-1C
Project:	SEC.24-T1N-R65W	TVD Reference:	WELL @ 5038.5ft (RKB - 16.5')
Reference Site:	Meehl 01N-65W-24 Pad Sec.24-T01N-R65W	MD Reference:	WELL @ 5038.5ft (RKB - 16.5')
Site Error:	0.0ft	North Reference:	True
Reference Well:	Meehl 01N-65W-24-1C	Survey Calculation Method:	Minimum Curvature
Well Error:	0.0ft	Output errors are at	2.00 sigma
Reference Wellbore	Wellbore #1	Database:	landmark
Reference Design:	Plan #1 (10-17-14)	Offset TVD Reference:	Offset Datum

Reference Depths are relative to WELL @ 5038.5ft (RKB - 16.5')
 Offset Depths are relative to Offset Datum
 Central Meridian is -105.500000 °

Coordinates are relative to: Meehl 01N-65W-24-1C
 Coordinate System is US State Plane 1983, Colorado Northern Zone
 Grid Convergence at Surface is: 0.58°



LEGEND

- W-24-2N, Wellbore #1, Plan #1 (10-17-14) V-x Meehl 01N-65W-24-8N, Wellbore #1, Plan #1 (10-17-14) V-o Meehl 01N-65W-24-7N, Wellbore #1
- W-24-5C, Wellbore #1, Plan #1 (10-17-14) V-t Meehl 01N-65W-24-9C, Wellbore #1, Plan #1 (10-17-14) V-s Meehl 01N-65W-24-3N, Wellbore #1
- W-24-4N, Wellbore #1, Plan #1 (10-17-14) V-t Meehl 01N-65W-24-8N, Wellbore #1, Plan #1 (10-17-14) V-o