

CAERUS OIL AND GAS LLC - EBUS

Nolte 43C-14

**Patterson 303**

## **Post Job Summary**

# **Cement Surface Casing**

Date Prepared: 05/29/14

Job Date: 04/05/14

Submitted by: Tony Eschete - Cement Engineer

*The Road to Excellence Starts with Safety*

<b>Sold To #:</b> 360446		<b>Ship To #:</b> 3280261		<b>Quote #:</b>		<b>Sales Order #:</b> 0901250834	
<b>Customer:</b> CAERUS OIL AND GAS LLC - EBUS				<b>Customer Rep:</b> BOYD COTTAM			
<b>Well Name:</b> NOLTE			<b>Well #:</b> 43C-14			<b>API/UWI #:</b> 05-045-22302-00	
<b>Field:</b> GRAND VALLEY		<b>City (SAP):</b> PAR		<b>County/Parish:</b> GARFIELD		<b>State:</b> COLORADO	
<b>Legal Description:</b> SE SE-14-7S-96W-788FSL-360FEL							
<b>Contractor:</b> PATTERSON-UTI ENERGY				<b>Rig/Platform Name/Num:</b> PATTERSON 303			
<b>Job BOM:</b> 7521							
<b>Well Type:</b> DIRECTIONAL GAS							
<b>Sales Person:</b> HALAMERICA\HAM2616				<b>Srvc Supervisor:</b> Edward Arnold			

**Job**

<b>Formation Name</b>			
<b>Formation Depth (MD)</b>	<b>Top</b>		<b>Bottom</b>
<b>Form Type</b>			<b>BHST</b>
<b>Job depth MD</b>	1046ft	<b>Job Depth TVD</b>	
<b>Water Depth</b>			<b>Wk Ht Above Floor</b>
<b>Perforation Depth (MD)</b>	<b>From</b>		<b>To</b>

**Well Data**

Description	New / Used	Size in	ID in	Weight lbm/ft	Thread	Grade	Top MD ft	Bottom MD ft	Top TVD ft	Bottom TVD ft
Casing	3	16	15.124	75			0	72	0	0
Casing		9.625	8.921	36	LTC	J-55	0	1046		0
Open Hole Section			13.5				72	1046	0	0

**Tools and Accessories**

Type	Size in	Qty	Make	Depth ft		Type	Size in	Qty	Make
Guide Shoe	9.625			1046		Top Plug	9.625	1	HES
Float Shoe	9.625					Bottom Plug	9.625		HES
Float Collar	9.625					SSR plug set	9.625		HES
Insert Float	9.625					Plug Container	9.625	1	HES
Stage Tool	9.625					Centralizers	9.625		HES

**Miscellaneous Materials**

<b>Gelling Agt</b>		<b>Conc</b>		<b>Surfactant</b>		<b>Conc</b>		<b>Acid Type</b>		<b>Qty</b>		<b>Conc</b>	
<b>Treatment Fld</b>		<b>Conc</b>		<b>Inhibitor</b>		<b>Conc</b>		<b>Sand Type</b>		<b>Size</b>		<b>Qty</b>	

**Fluid Data**

<b>Stage/Plug #: 1</b>										
Fluid #	Stage Type	Fluid Name	Qty	Qty UoM	Mixing Density lbm/gal	Yield ft3/sack	Mix Fluid Gal	Rate bbl/min	Total Mix Fluid Gal	
1	Fresh Water Spacer	Fresh Water Spacer	0	bbl	8.34			4		

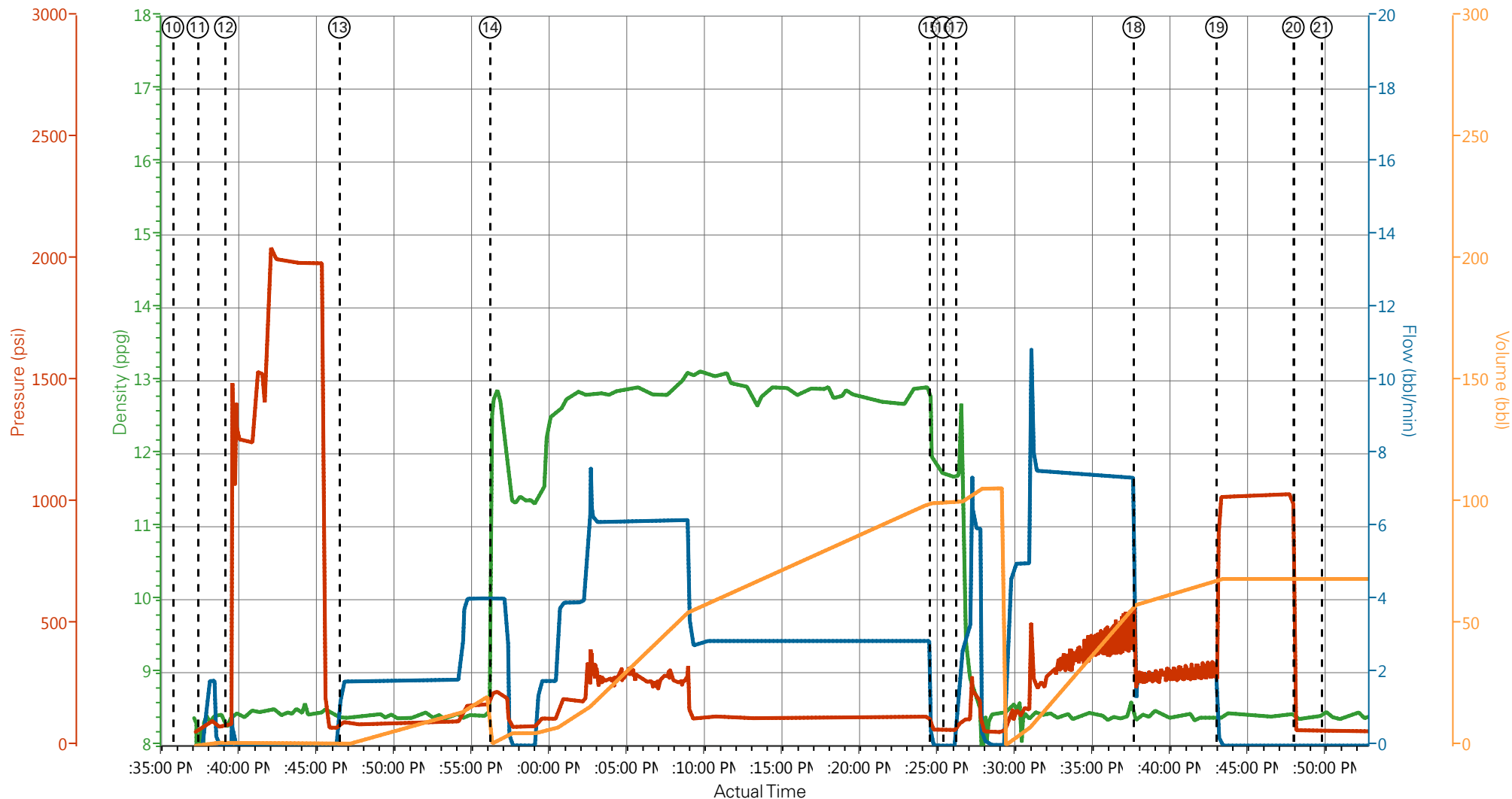
Fluid #	Stage Type	Fluid Name	Qty	Qty UoM	Mixing Density lbm/gal	Yield ft3/sack	Mix Fluid Gal	Rate bbl/min	Total Mix Fluid Gal
2	Tail Cement	VERSACEM (TM) SYSTEM		Sack/Ton	12.8	2.18		3	12.11
12.07 Gal		FRESH WATER							
Fluid #	Stage Type	Fluid Name	Qty	Qty UoM	Mixing Density lbm/gal	Yield ft3/sack	Mix Fluid Gal	Rate bbl/min	Total Mix Fluid Gal
3	Displacement	Displacement	0	bbl	8.34			7	
Cement Left In Pipe		Amount	41.3 ft		Reason		Shoe Joint		
Comment									

## 1.1 Job Event Log

Seq. No.	Activity	Graph Label	Date	Time	Source	DH Density (ppg)	Comb Pump Rate (bbl/min)	PS Pump Press (psi)	Pump Stg Tot (bbl)	Comment
1	Call Out	Call Out	4/5/2014	10:00:00	USER					CREW CALLED OUT FOR JOB
2	Pre-Convoy Safety Meeting	Pre-Convoy Safety Meeting	4/5/2014	12:15:00	USER					DISCUSSED ROUTE HAZARDS AND SAFETY WHILE DRIVING
3	Crew Leave Yard	Crew Leave Yard	4/5/2014	12:30:00	USER					
4	Arrive At Loc	Arrive At Loc	4/5/2014	14:00:00	USER					RIG STILL PULLING DRILL PIPE
5	Assessment Of Location Safety Meeting	Assessment Of Location Safety Meeting	4/5/2014	17:00:00	USER					DISCUSSED SPOTING HAZARDS AND SAFETY
6	Pre-Rig Up Safety Meeting	Pre-Rig Up Safety Meeting	4/5/2014	17:15:00	USER					DISCUSSED RIG UP HAZARDS AND SAFETY
7	Rig-Up Equipment	Rig-Up Equipment	4/5/2014	17:20:00	USER					1 ELITE #2, 1 660 BULKK TRUCK, 1 HARD LINE TO FLOOR, 1 LINE TO UPRIGHT., 1 9 5/8 COMPACT HEAD.
8	Rig-Up Completed	Rig-Up Completed	4/5/2014	18:00:00	USER					
9	Pre-Job Safety Meeting	Pre-Job Safety Meeting	4/5/2014	18:15:00	USER					DISCUSSED JOB PROCEDURES HAZARDS AND SAFETY.
10	Start Job	Start Job	4/5/2014	18:36:00	USER					TD 1045, TP 1027.3, SJ 41.3, OH 13 1/2, CASING 9 5/8 36# J-55, MUD 9.9.
11	Prime Pumps	Prime Pumps	4/5/2014	18:37:35	USER	8.33	2	100	2	FILL LINES WITH 2 BBL FRESH WATER
12	Test Lines	Test Lines	4/5/2014	18:39:22	USER	8.36	0.00	1999	0	TESTED LINES TO 1999 PSI
13	Pump Spacer	Pump Spacer	4/5/2014	18:46:43	USER	8.39	4	167	20	20 BBL FRESH WATER SPACER
14	Pump Cement	Pump Cement	4/5/2014	18:56:26	USER	12.8	3	215	102.8	265 SKS CEMENT, 12,8 PPG, 2.18 CF3, 12.11 GAL/SK. CEMENT HEAD STUCK AT BEGINING OF CEMENT, OPERATOR SHUT DOWN AND GOT TUB BACK UP TOO WEIGHTAND CONTINUED WITH JOB, HAD PROBLEMB S WITH MIXING SO WE SLOWED TO 3 TO KEEP A GOOD DENSITY DURING JOB.
15	Shutdown	Shutdown	4/5/2014	19:24:45	USER	12.8	0.00	0	0	
16	Drop Plug	Drop Plug	4/5/2014	19:25:36	USER					PLUG LEFT CONTAINER

17	Pump Displacement	Pump Displacement	4/5/2014	19:26:27	USER	8.33	7	510	66.2	FRESH WATER DISLACEMENT
18	Slow Rate	Slow Rate	4/5/2014	19:37:54	USER	8.33	2	310	10	SLOW RATE LAST 10 BBL OF DISPLACEMENT PRIOR TO BUMPING THE PLUG
19	Bump Plug	Bump Plug	4/5/2014	19:43:14	USER	8.37	0.00	1011.64	76.2 TOTAL	BUMPED PLUG
20	Check Floats	Check Floats	4/5/2014	19:48:11	USER	8.36	0.00			FLOATS HELD, 1 BBL BACK
21	End Job	End Job	4/5/2014	19:50:00	USER		0.00			END JOB
22	Pre-Rig Down Safety Meeting	Pre-Rig Down Safety Meeting	4/5/2014	19:55:00	USER					DISCUSSED JOB, RIG DOWN, HAZARDS AND SAFETY.
23	Rig-Down Equipment	Rig-Down Equipment	4/5/2014	20:00:00	USER					
24	Rig-Down Completed	Rig-Down Completed	4/5/2014	21:30:00	USER					
25	Pre-Convoy Safety Meeting	Pre-Convoy Safety Meeting	4/5/2014	21:45:00	USER					DISCUSSED ROUTE HAZARDS AND SAFETY CREW TO LEAVE LOCATION AT 2200. THANKYOUO FOR USING HALLIBURTON, ED ARNOLD AND CREW.

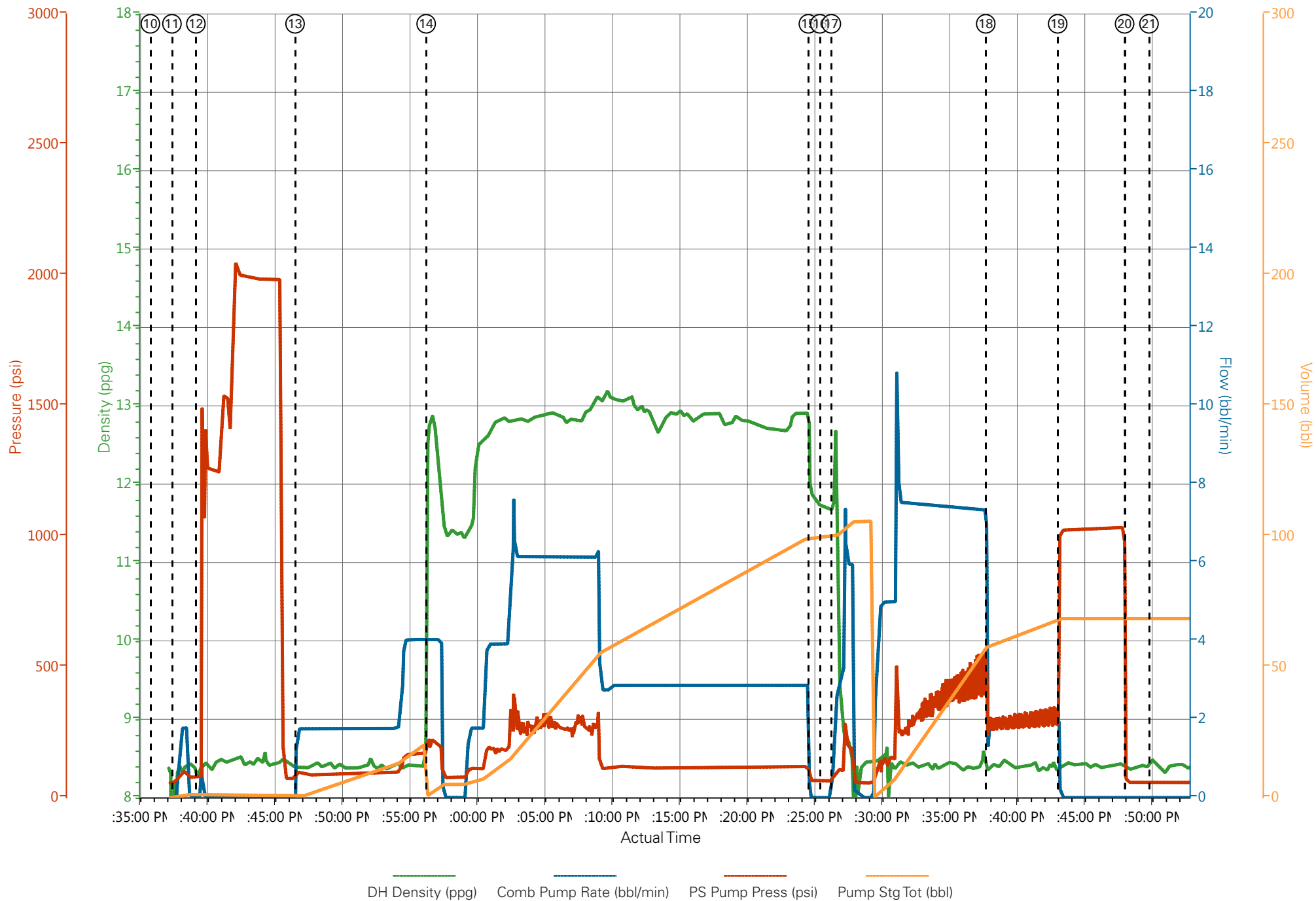
# CAERUS - NOLTE 43C-14 - 9 5/8 SURFACE



DH Density (ppg) Comb Pump Rate (bbl/min) PS Pump Press (psi) Pump Stg Tot (bbl)

⑥ Pre-Rig Up Safety Meeting n/a;n/a;n/a;n/a	⑪ Prime Pumps 6.45;0;57.25;0	⑯ Drop Plug 11.72;0;62.87;99.7	21 End Job 8.5;0;59.12;68.54
⑦ Rig-Up Equipment n/a;n/a;n/a;n/a	⑫ Test Lines 8.36;0;81.63;1.17	⑰ Pump Displacement 12.26;1.81;93.81;99.96	22 Pre-Rig Down Safety Meeting n/a;n/a;n/a;n/a
⑧ Rig-Up Completed n/a;n/a;n/a;n/a	⑬ Pump Spacer 8.39;1.76;98.5;1.53	⑱ Slow Rate 8.33;1.78;282.25;58.16	23 Rig-Down Equipment n/a;n/a;n/a;n/a
⑨ Pre-Job Safety Meeting n/a;n/a;n/a;n/a	⑭ Pump Cement 12.75;4.03;215.69;1.28	⑲ Bump Plug 8.37;0;1011.64;68.54	24 Rig-Down Completed n/a;n/a;n/a;n/a
⑩ Start Job n/a;n/a;n/a;n/a	⑮ Shutdown 11.85;0;65.69;99.7	20 Check Floats 8.36;0;59.12;68.54	25 Pre-Convoy Safety Meeting n/a;n/a;n/a;n/a

# CAERUS - NOLTE 43C-14 - 9 5/8 SURFACE



# HALLIBURTON

## Water Analysis Report

Company:	CAERUS	Date:	4/5/2014
Submitted by:	ED ARNOLD	Date Rec.:	4/5/2014
Attention:		S.O.#	901250834
Lease	NOLTE	Job Type:	SURFACE
Well #	43C-14		

Specific Gravity	MAX	1
pH	8	7
Potassium (K)	5000	200 Mg / L
Calcium (Ca)	500	120 Mg / L
Iron (FE2)	300	0 Mg / L
Chlorides (Cl)	3000	0 Mg / L
Sulfates (SO <sub>4</sub> )	1500	<200 Mg / L
Chlorine (Cl <sub>2</sub> )		0 Mg / L
Temp	40-80	49 Deg
Total Dissolved Solids		0 Mg / L

Respectfully: ED ARNOLD

Title: CEMENTING SUPERVISOR

Location: Grand Junction, CO

NOTICE: This report is limited to the described sample tested. Any person using or relying on this report agrees that Halliburton shall not be liable for any loss or damage whether due to act or omission resulting from such report or its use