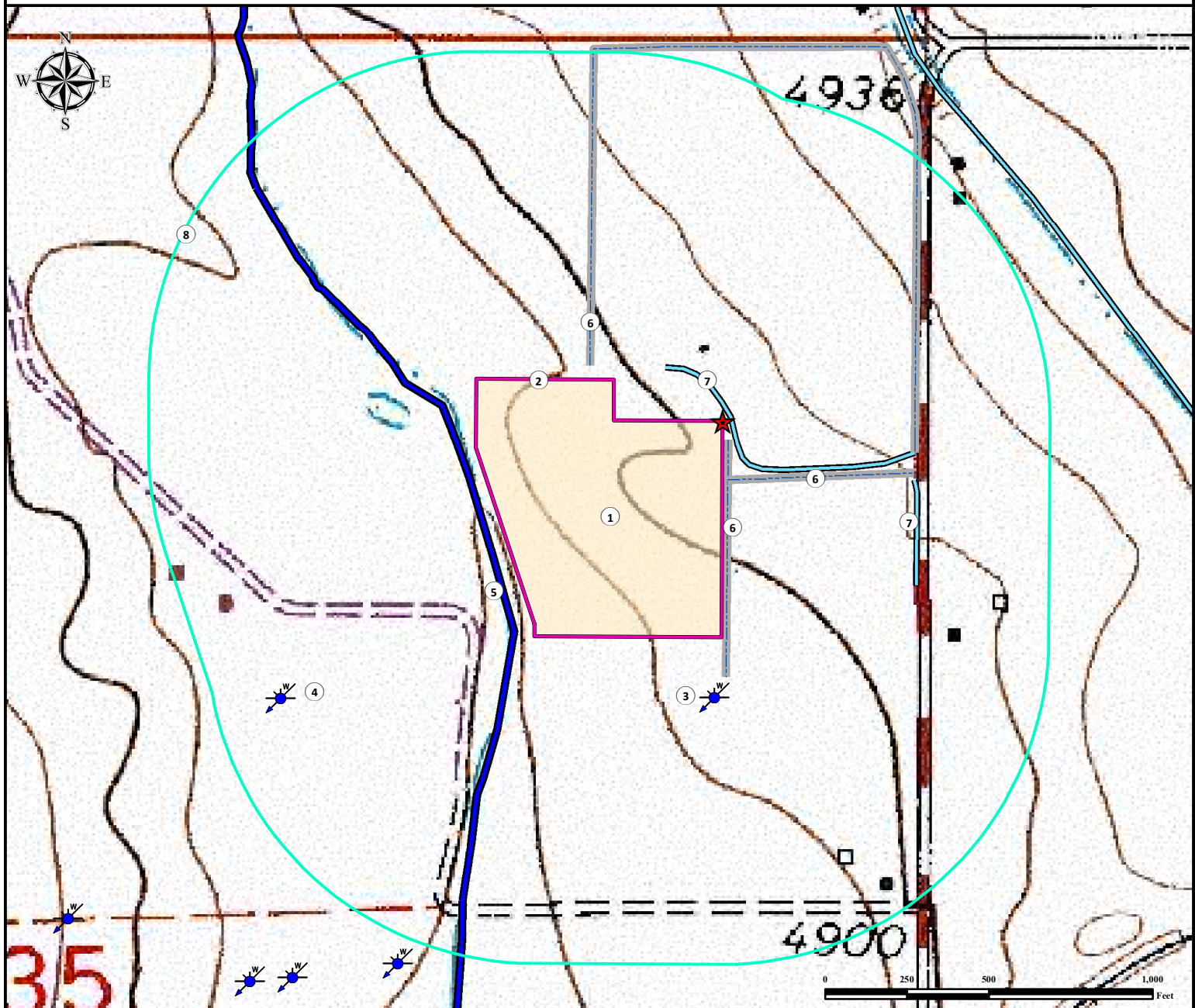


Hydrology Map

HERGERT 35-D FACILITY

E½ NE¼ SECTION 35, TOWNSHIP 7 NORTH, RANGE 67 WEST OF THE 6TH PRINCIPAL MERIDIAN



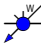






Measured from Nearest Facility Edge

1. Proposed HERGERT 35-D FACILITY.
2. Operational Disturbance Area.
3. Water Well (Permit #13388) is $\pm 184'$ S.
4. Water Well (Permit #11513) is $\pm 798'$ SW.
5. Canal is $\pm 48'$ W.
6. Concrete Ditches are $\pm 14'$ E, $\pm 16'$ E, and $\pm 41'$ N.

7. Ditches are $\pm 27'$ E and $\pm 584'$ E.
8. 1000' Radius

Legend

- | | |
|---|--|
|  Proposed Facility |  Ditch |
|  Water Well |  Concrete Ditch |
|  Disturbance Area |  Canal |
|  1000' Radius | |



1148' FNL 616' FEL

LAT: 40.534746° LONG: -104.853218° (NAD 83)



Use our resources to find yours!
www.petro-fs.com
(303) 928-7128

Field Date: 7/11/2014
Drafting Date: 7/30/2014
Drafter: DRF
Checked By: CSG
Revision:

Data Sources:
- Topo courtesy USGS
- Water features courtesy of NHD

Prepared for:

