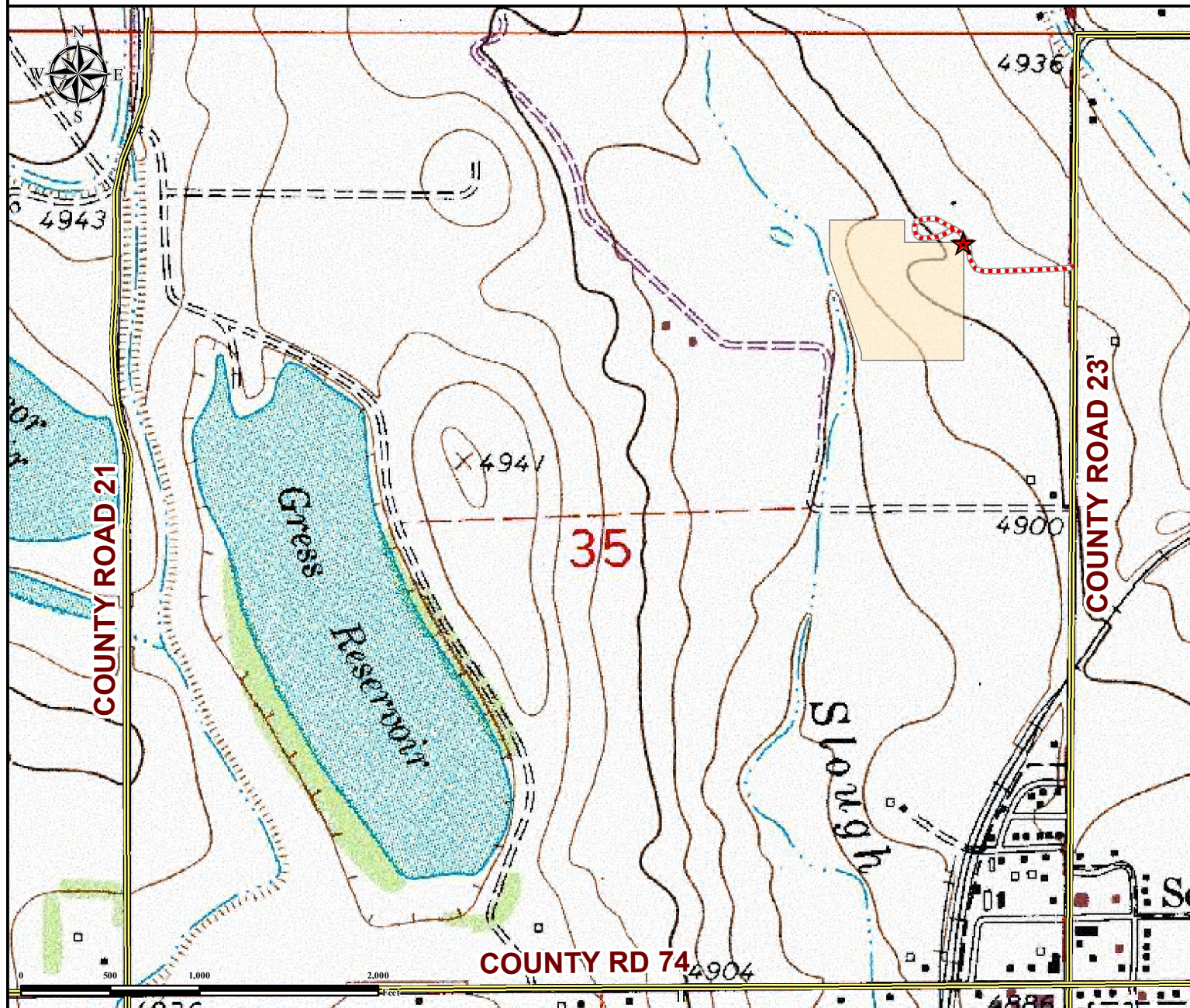


# Access Road Map

## HERGERT 35-D FACILITY

E½ NE¼ SECTION 35, TOWNSHIP 7 NORTH, RANGE 67 WEST OF THE 6TH PRINCIPAL MERIDIAN




**From Severance, CO:** From the intersection of County Rd 23 and County Rd 74, Drive North on County Rd 23 for  $\pm 0.76$  miles to Proposed Access and turn left. Drive East on proposed access road for  $\pm 1021$  feet to proposed facility location.

Total distance from Severance, CO to proposed facility location is  $\pm 0.95$  miles.

### Legend

 Proposed Facility

 Proposed Access Road

 Public Road



1148' FNL 616' FEL

LAT: 40.534746° LONG: -104.853218° (NAD 83)



Use our resources to find yours!  
[www.petro-fs.com](http://www.petro-fs.com)  
(303) 928-7128

Field Date: 7/11/2014  
Drafting Date: 7/30/2014  
Drafted By: DRF  
Checked By: CSG  
Revision:

Data Sources:  
- Topo courtesy of USGS

Prepared for:

