



**RADIAL CEMENT BOND
GAMMA RAY
CCL**

Company		KERR MCGEE OIL AND GAS	
Well		KUIPERS RED V 12-6	
Field		WATTENBERG	
County		WELD	
State		CO	
Location:		APL # : 05-123-17566	
LAT: 40.15360 LONG: -104.84180 SE/NW		Other Services	
SEC 12 TWP 2N RGE 67W		Elevation	
Permanent Datum		GL	4835'
Log Measured From		KB 10'	KB. 4845'
Drilling Measured From		KB	D.F. 4844'
			G.L. 4835'
Date	11-6-2014		
Run Number	ONE		
Depth Driller	7525'		
Depth Logger	4580'		
Bottom Logged Interval	4580'		
Top Log Interval	SURFACE		
Open Hole Size	7.875		
Type Fluid	WATER		
Density / Viscosity	1.0		
Max. Recorded Temp.	N/A		
Estimated Cement Top	N/A		
Time Well Ready	N/A		
Time Logger on Bottom	N/A		
Equipment Number	4310		
Location	GREELEY		
Recorded By	N. BREHMER		
Witnessed By	R. CENTORA		
Borehole Record			
Run Number	Bit	From	To
ONE	12.25"	SURFACE	551'
TWO	7.88"	551'	7525'
Tubing Record			
Casing Record	Size	Wgt/Ft	Top
Surface String	8.63	24#	SURFACE
Prot. String			
Production String	2.88	6.5#	SURFACE
Liner			

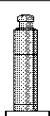
<<< Fold Here >>>

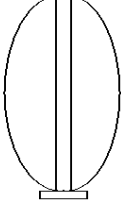
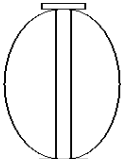
All interpretations are opinions based on inferences from electrical or other measurements and we cannot and do not guarantee the accuracy or correctness of any interpretation, and we shall not, except in the case of gross or willful negligence on our part, be liable or responsible for any loss, costs, damages, or expenses incurred or sustained by anyone resulting from any interpretation made by any of our officers, agents or employees. These interpretations are also subject to our general terms and conditions set out in our current Price Schedule.

Comments

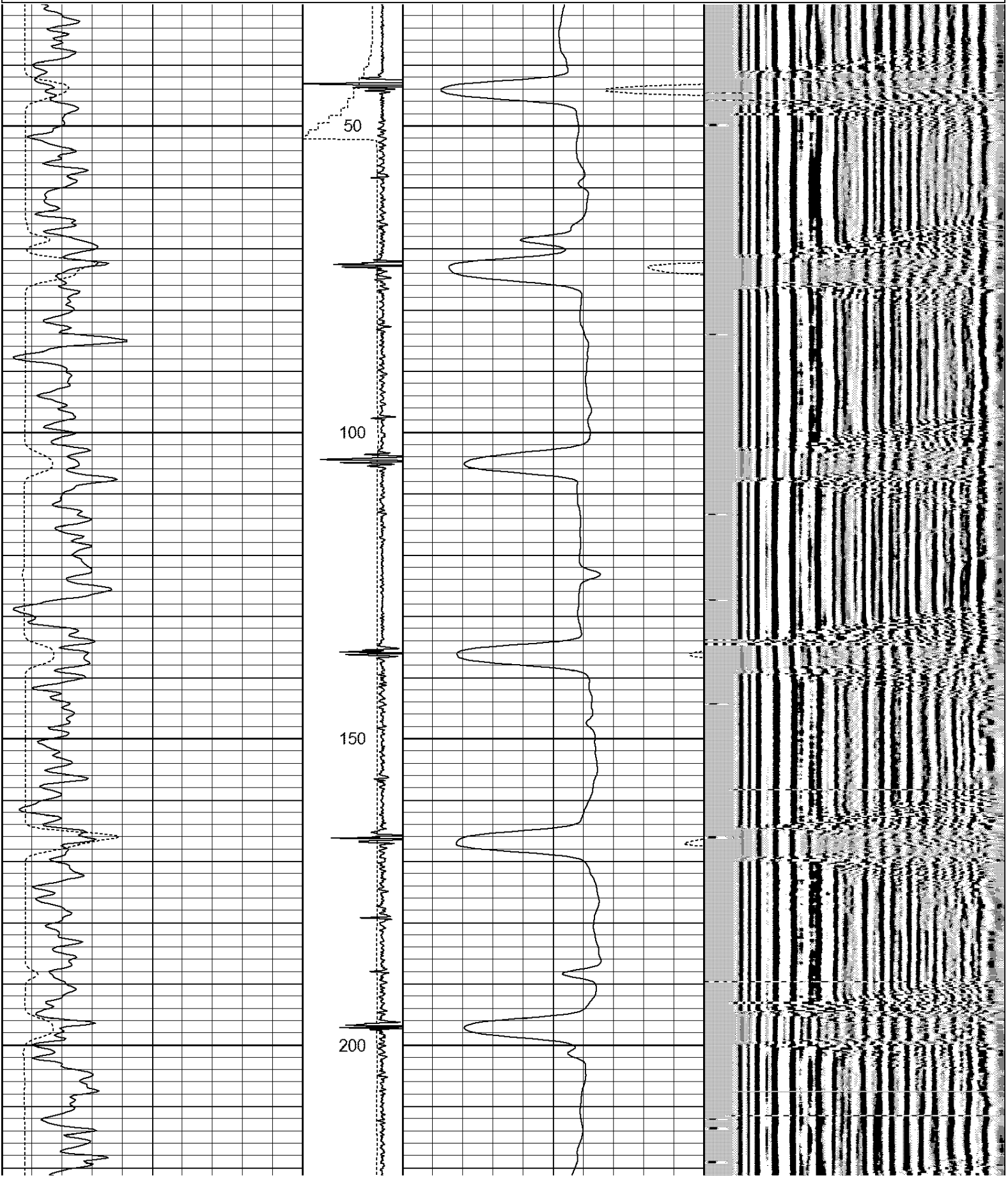
RAN CBL TO VERIFY CEMENT BOND

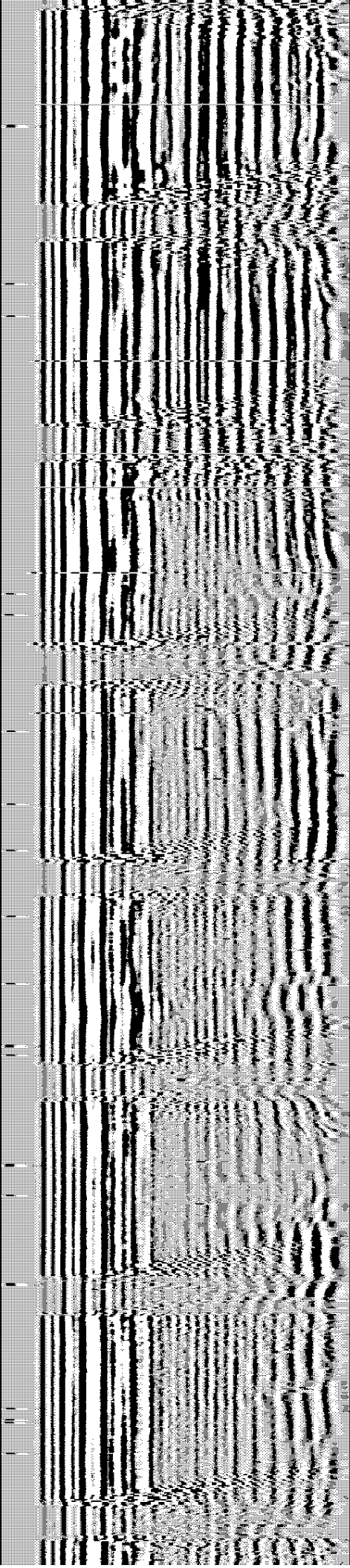
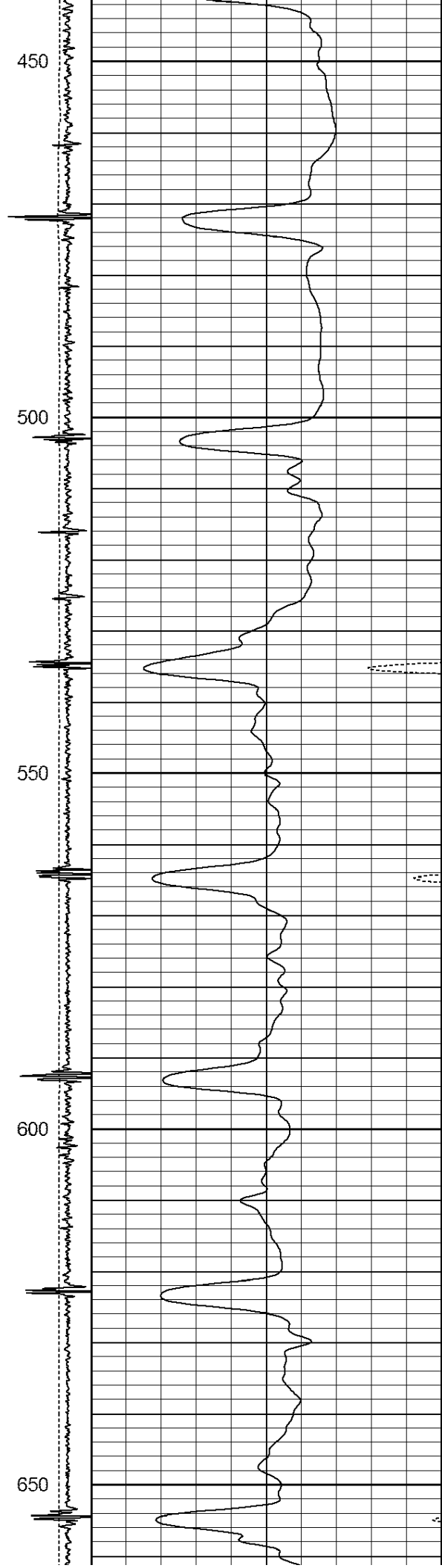
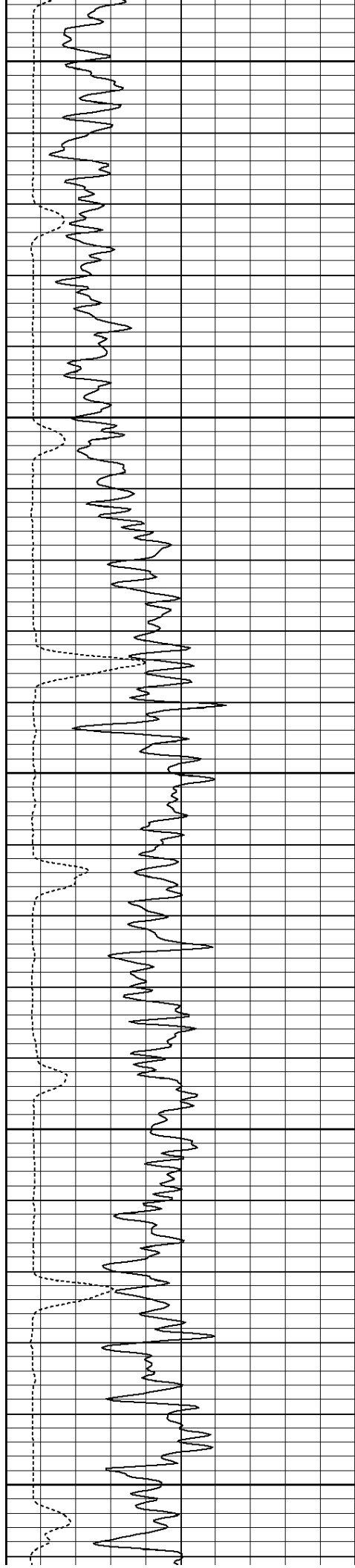
THANK YOU FOR USING WARRIOR !!!!!!!

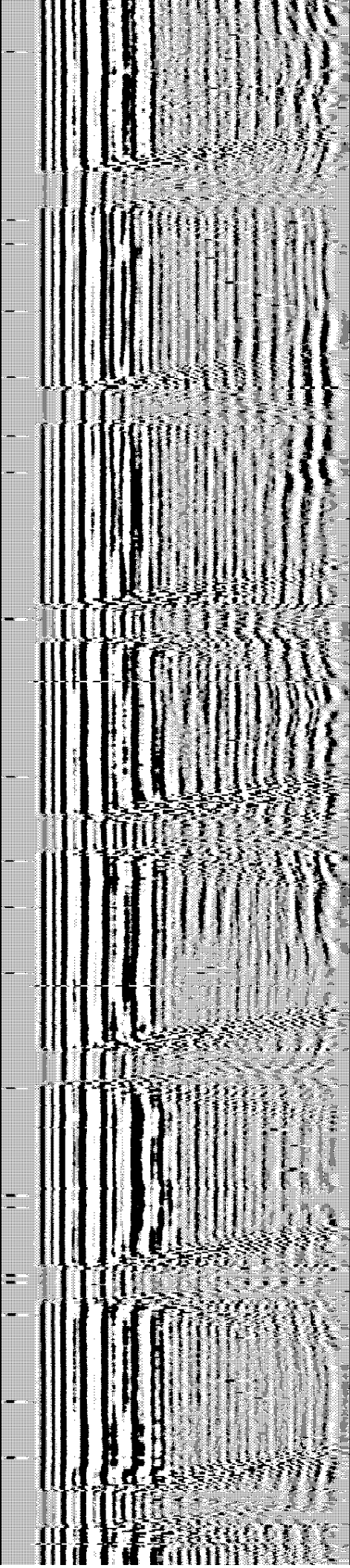
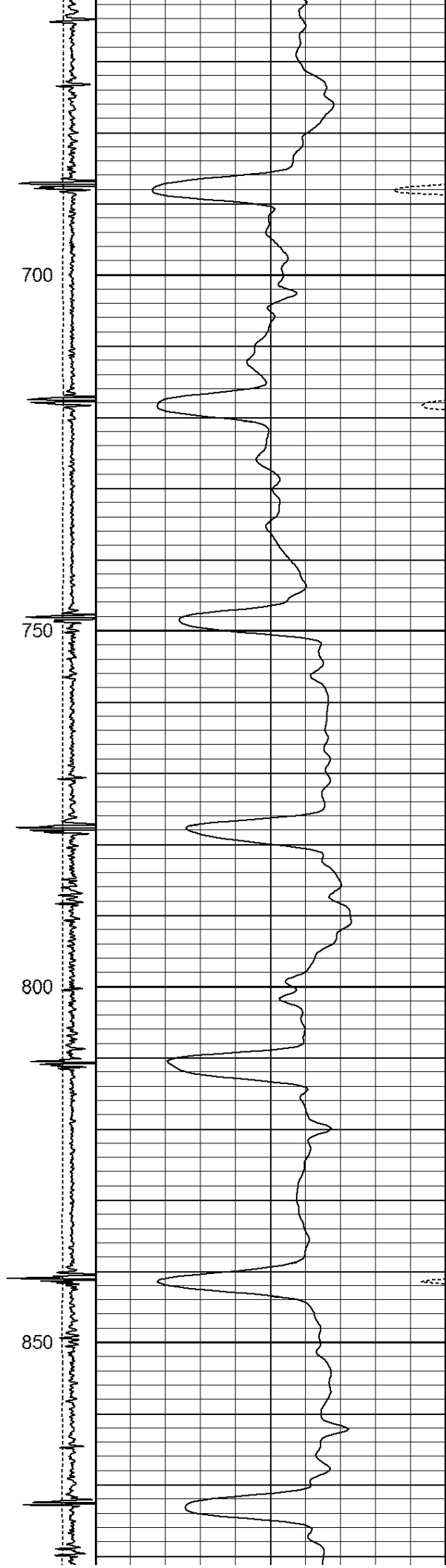
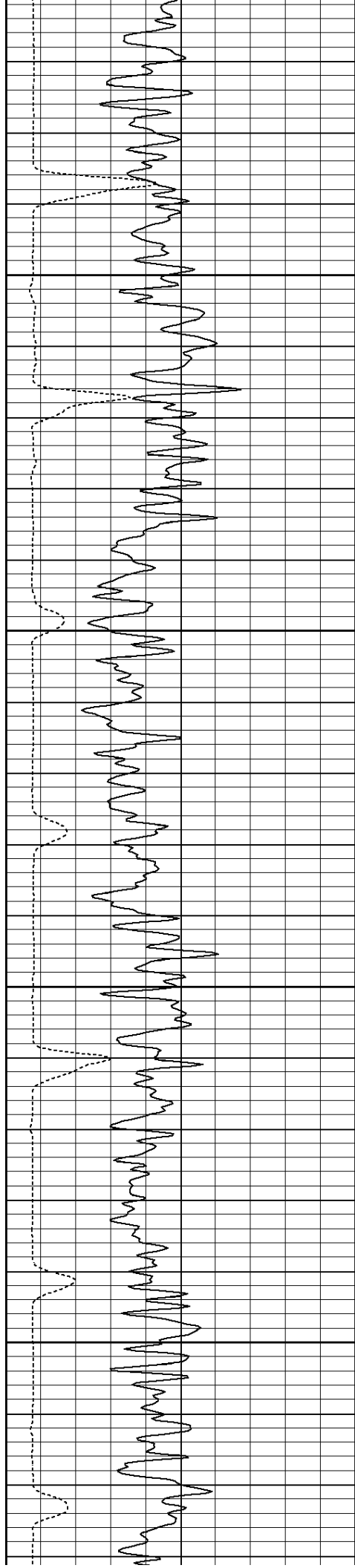
Sensor	Offset (ft)	Schematic	Description	Len (ft)	OD (in)	Wt (lb)
			1_4	1.00	1.36	5.00

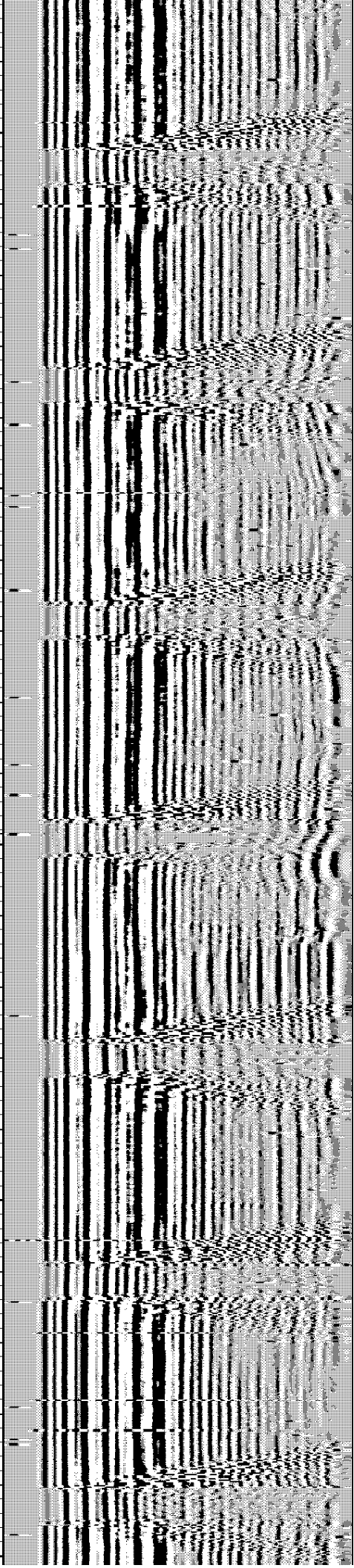
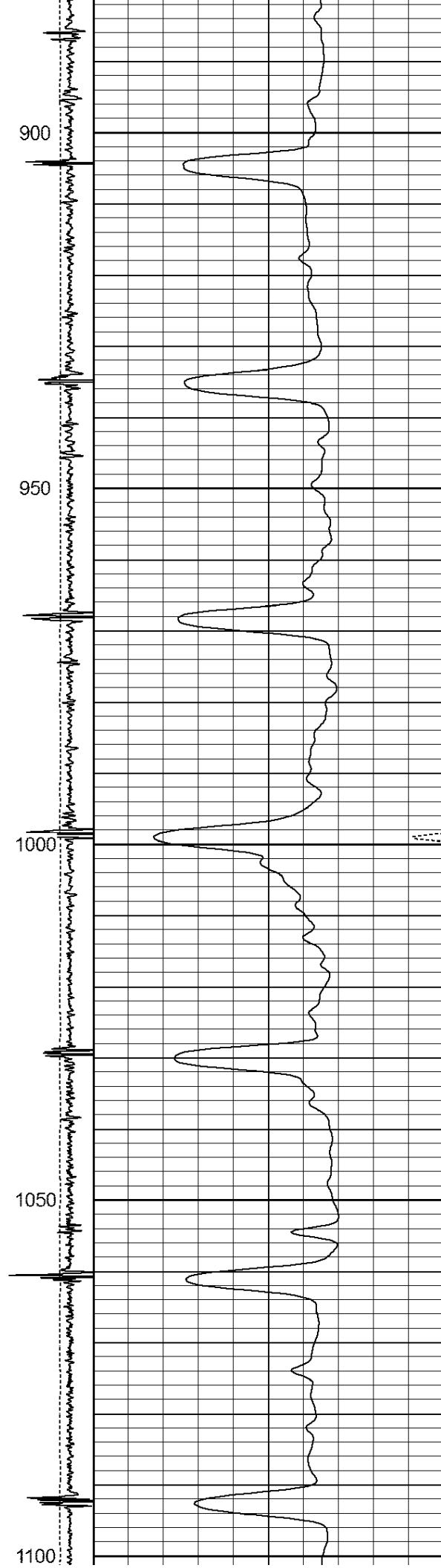
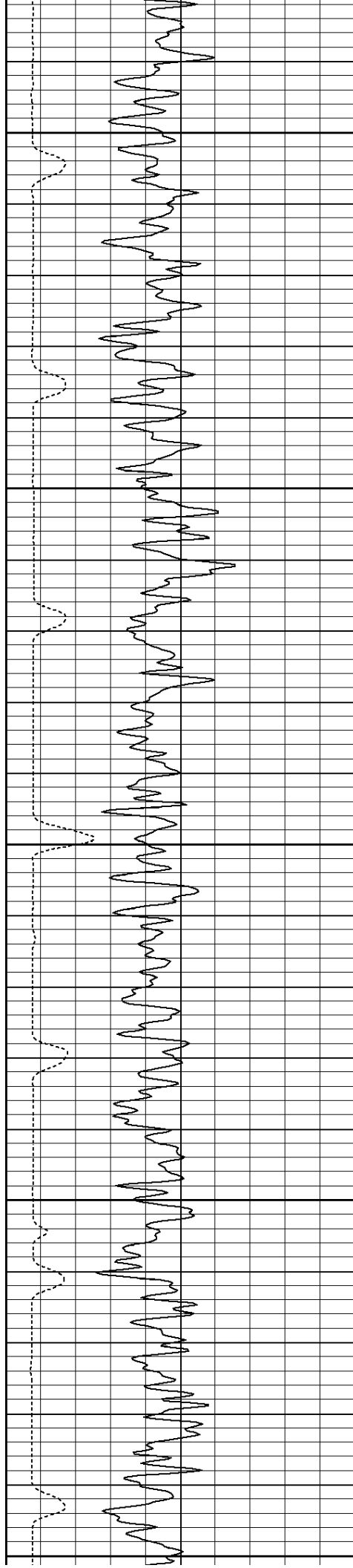
			1.69variable 1.69" Centrilizer Variable Length	2.17	1.69	15.00
WVF3FT	11.07		CBL102-Tekco102 (102-001)	9.51	1.69	50.00
WVF5FT	10.07					
WVFSYNC	6.74					
			1.69variable 1.69" Centrilizer Variable Length	1.66	1.69	15.00
CCL	4.17		CCL-sb1 (10000)	1.67	1.63	5.00
GR	2.67		GR-comp1a (10000)	3.42	1.75	20.00
Dataset: kuipers red v 1206.db: field/well/run1/pass2 Total Length: 19.42 ft Total Weight: 110.00 lb O.D. 1.75 in						

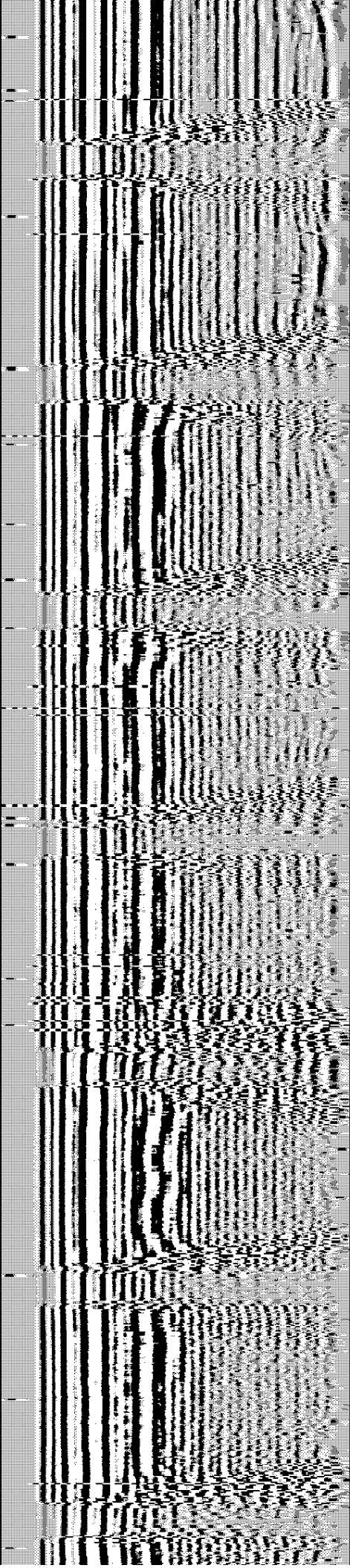
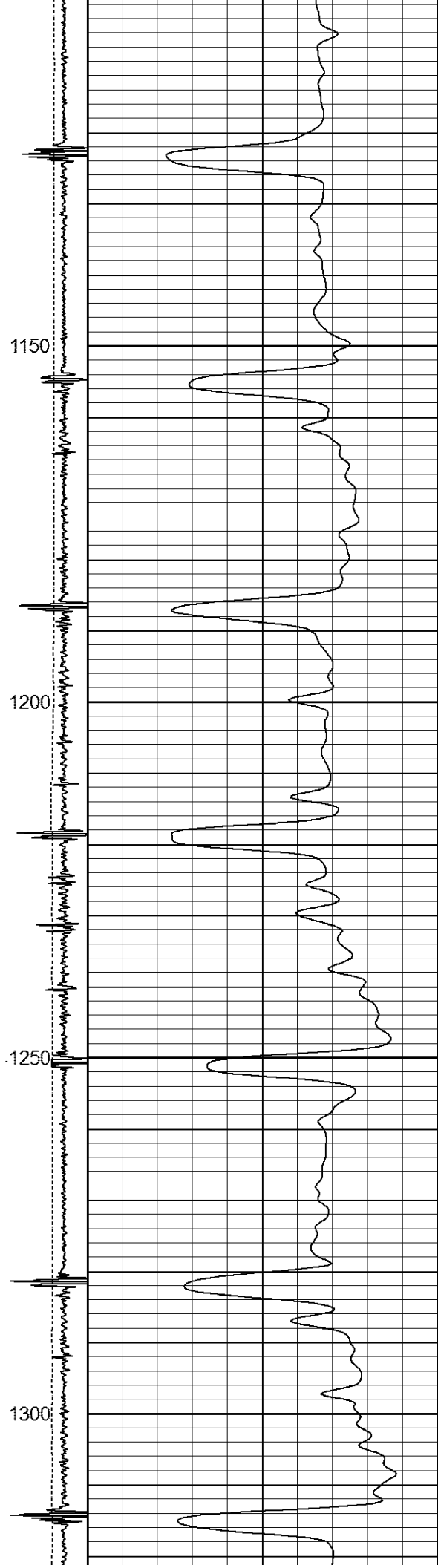
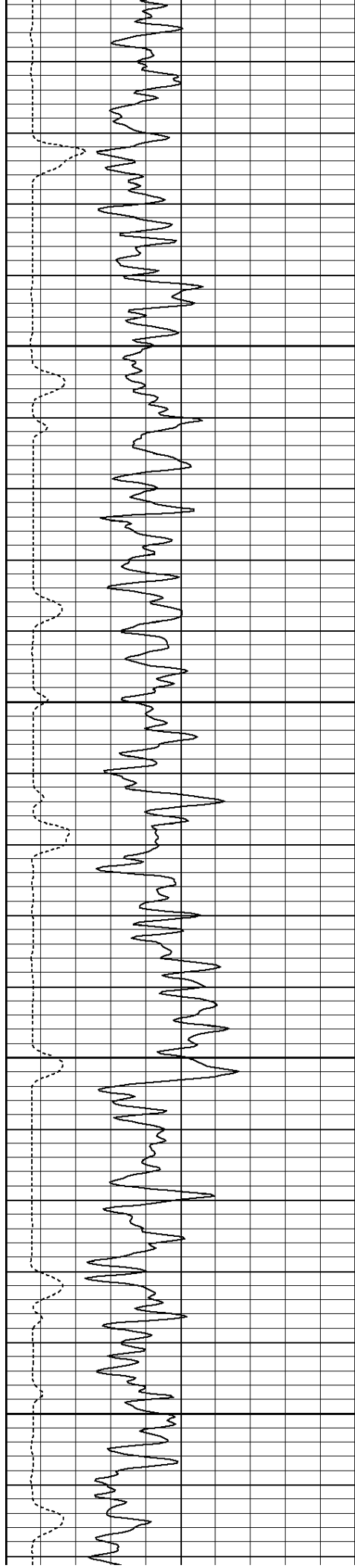
150	TT (usec)	800	-4 CCL	1 0	AMP (mV)	105	200	VDL	1200
0	GR (cps)	200	LSPD	0	AMPx5 (mV)	20			
200	GR (cps)	400	(ft/min)						
			0 150						

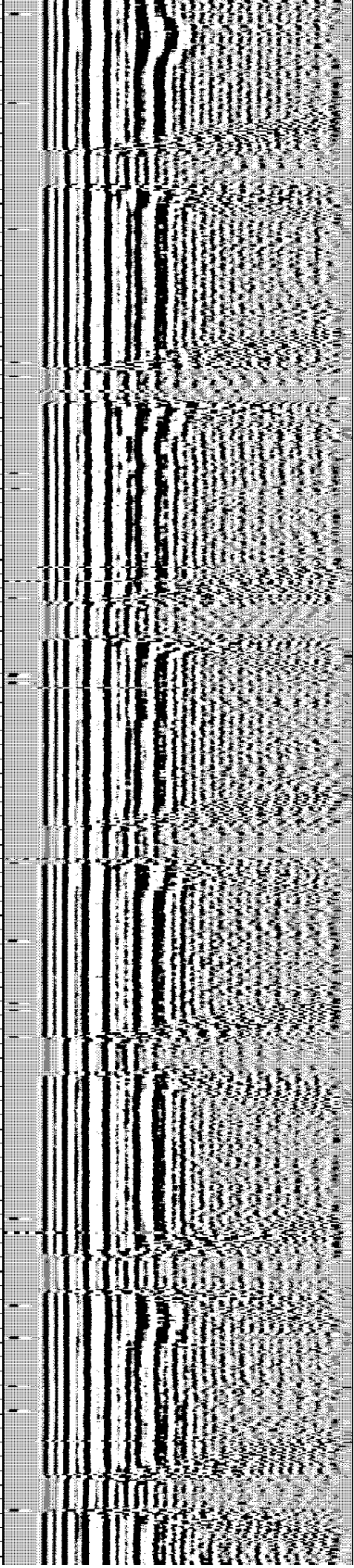
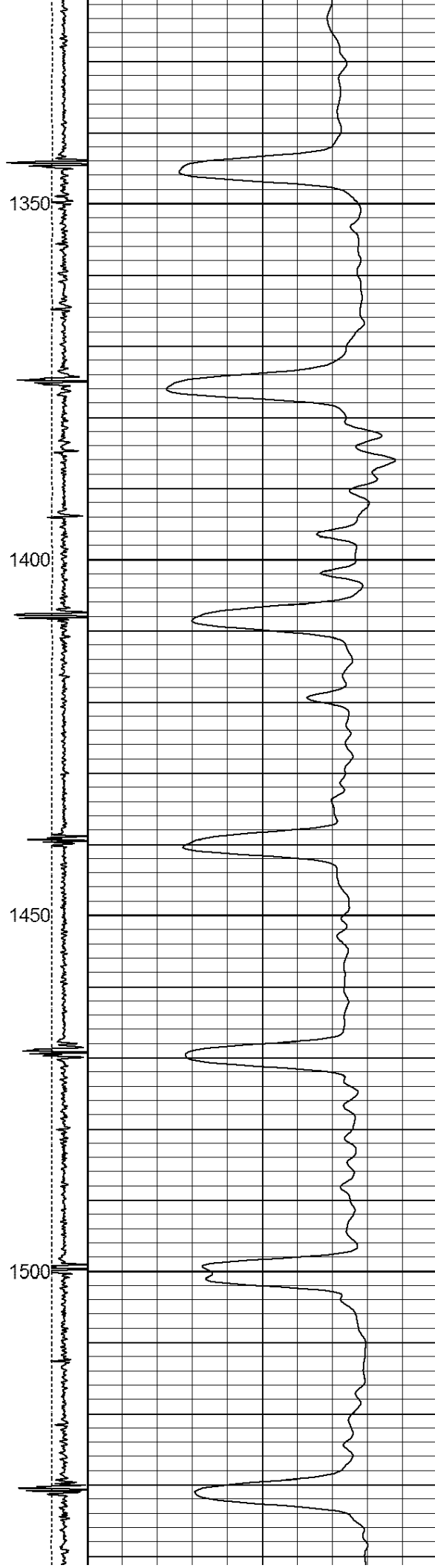
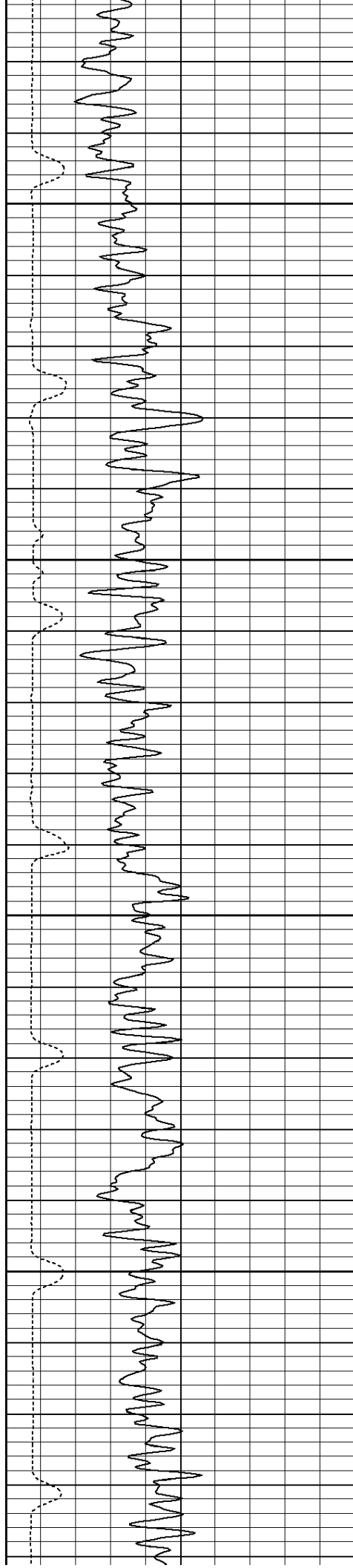


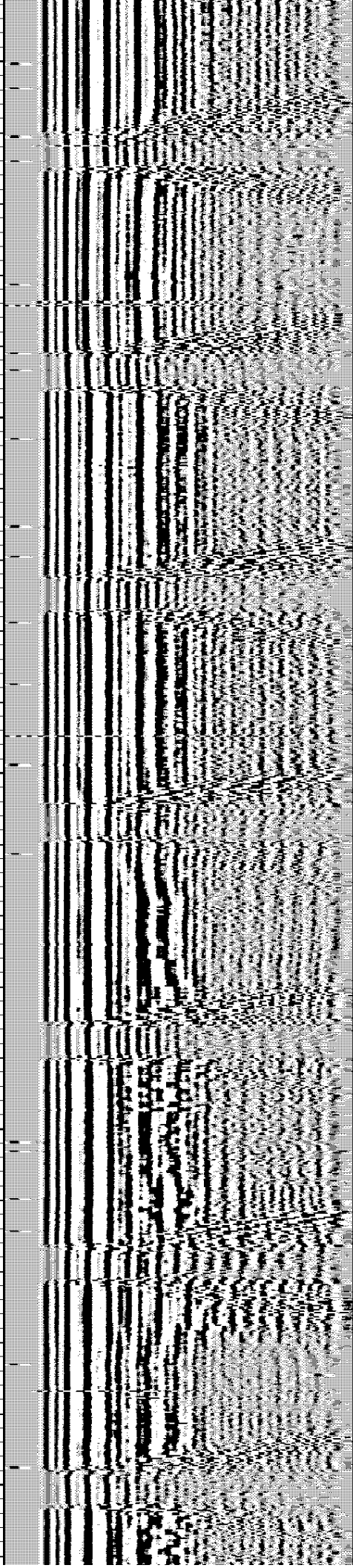
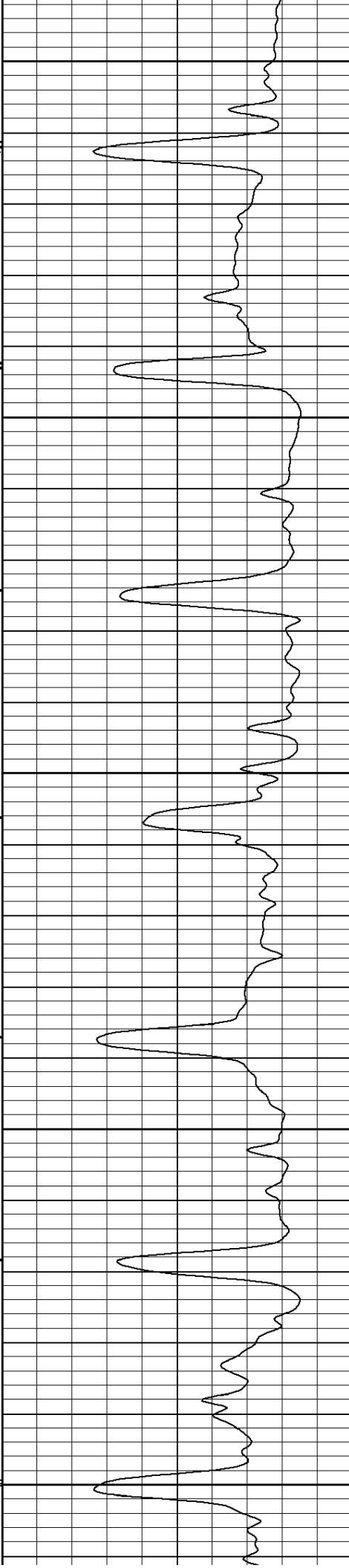
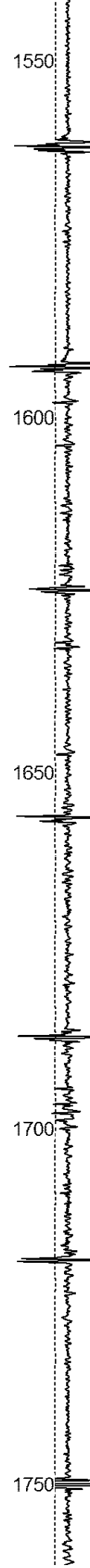
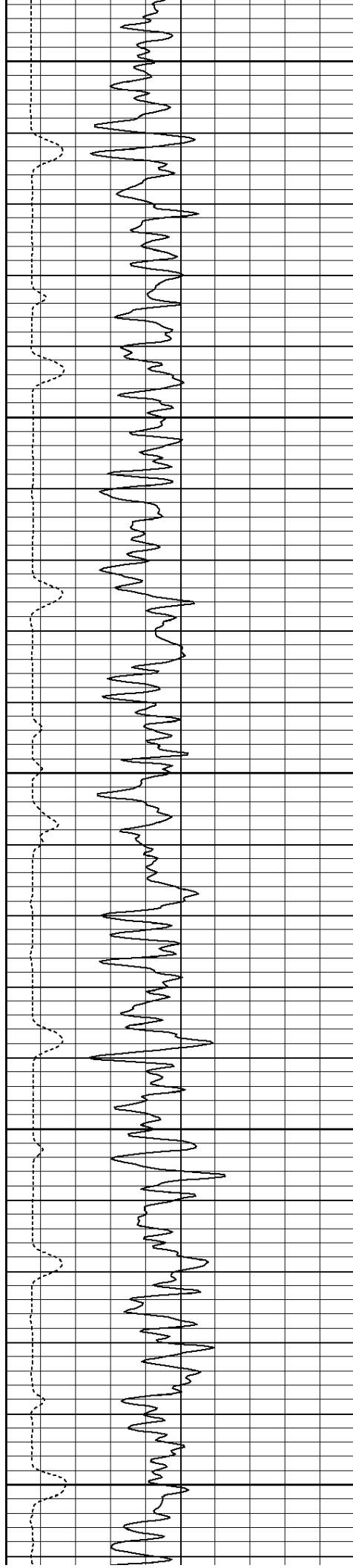


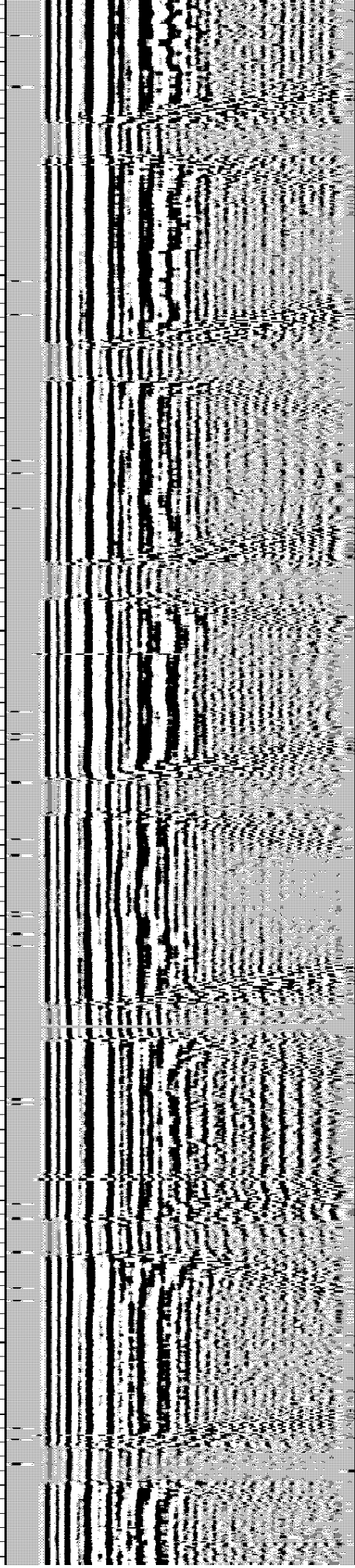
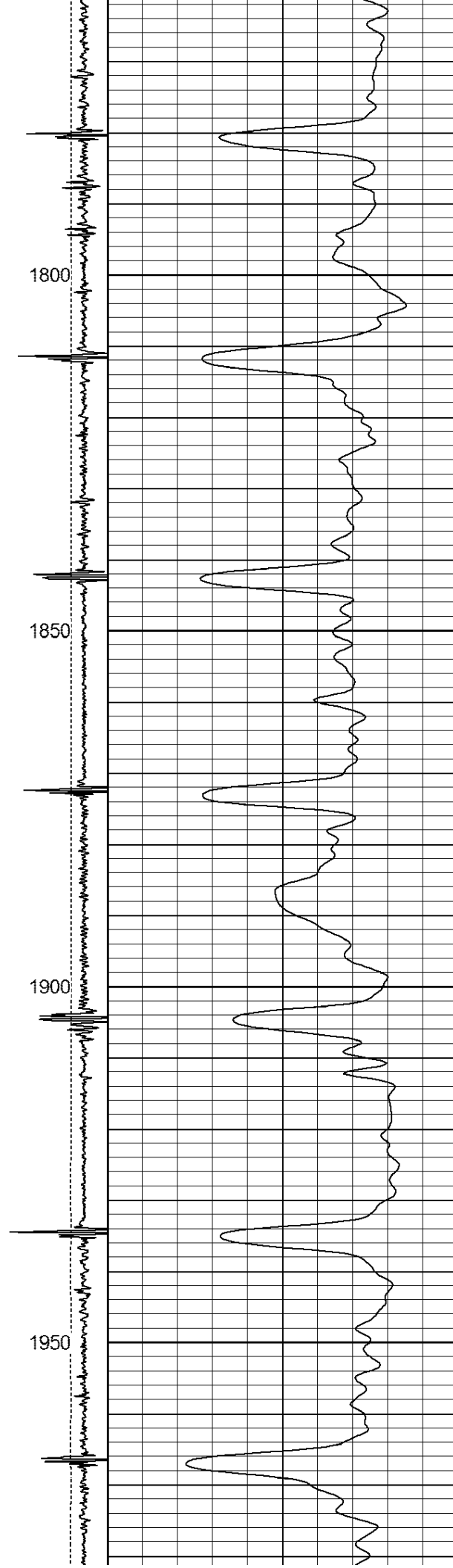
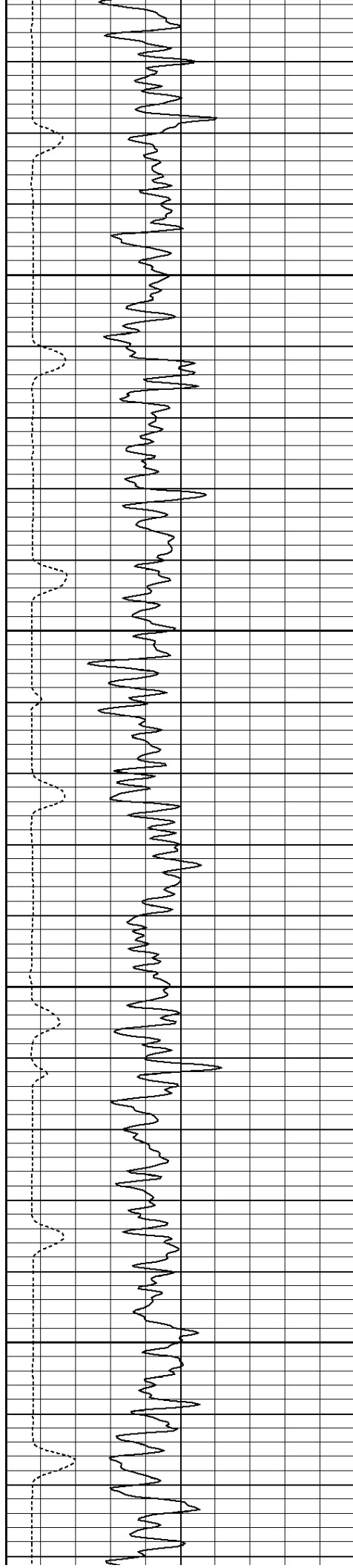


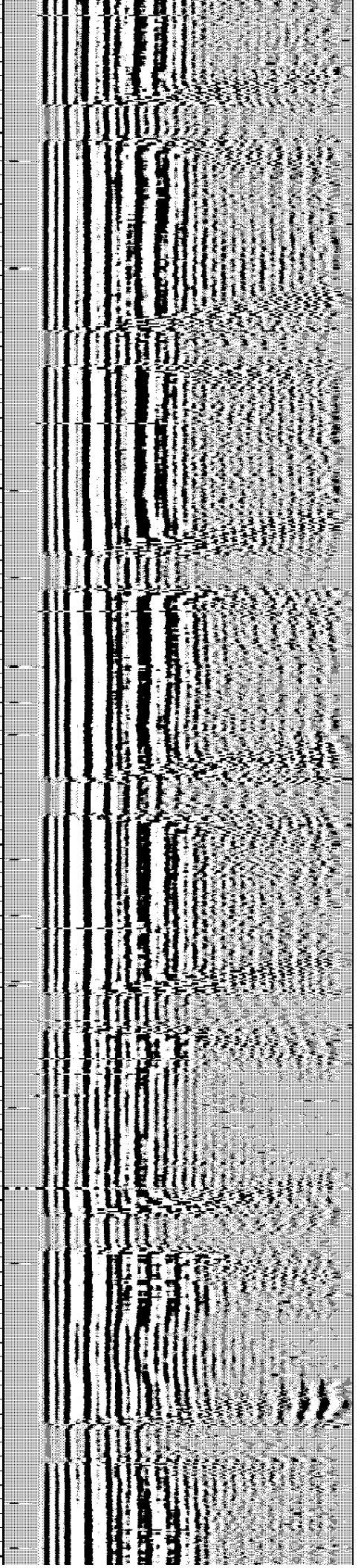
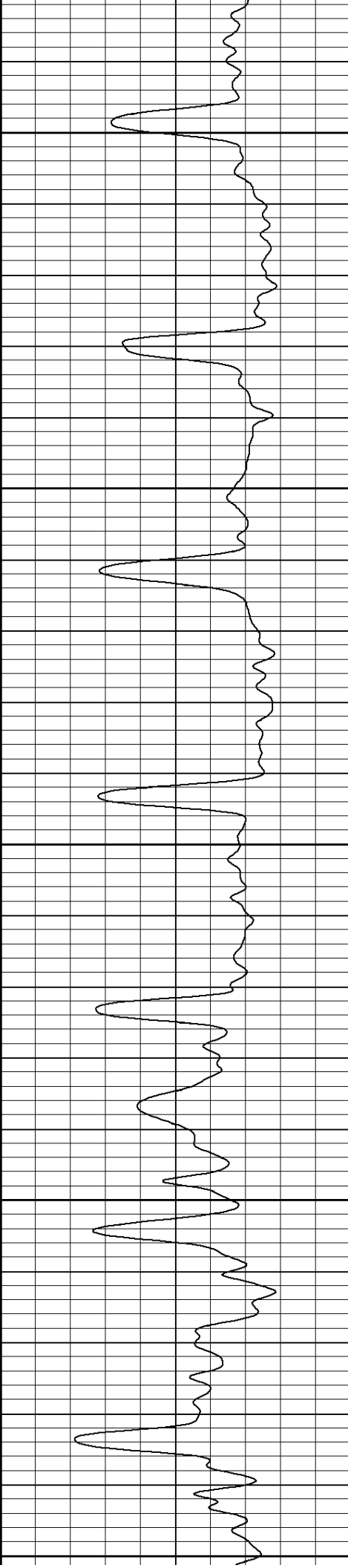
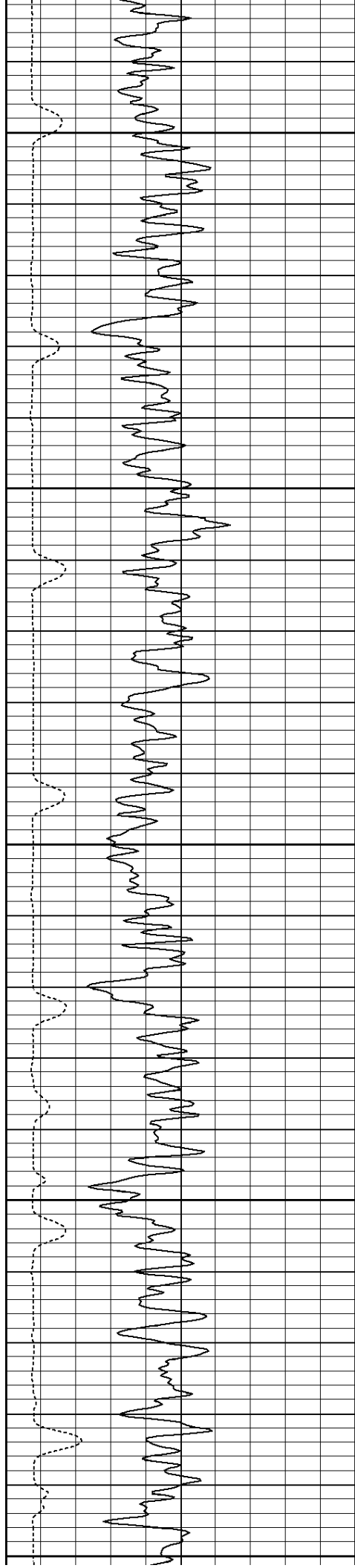


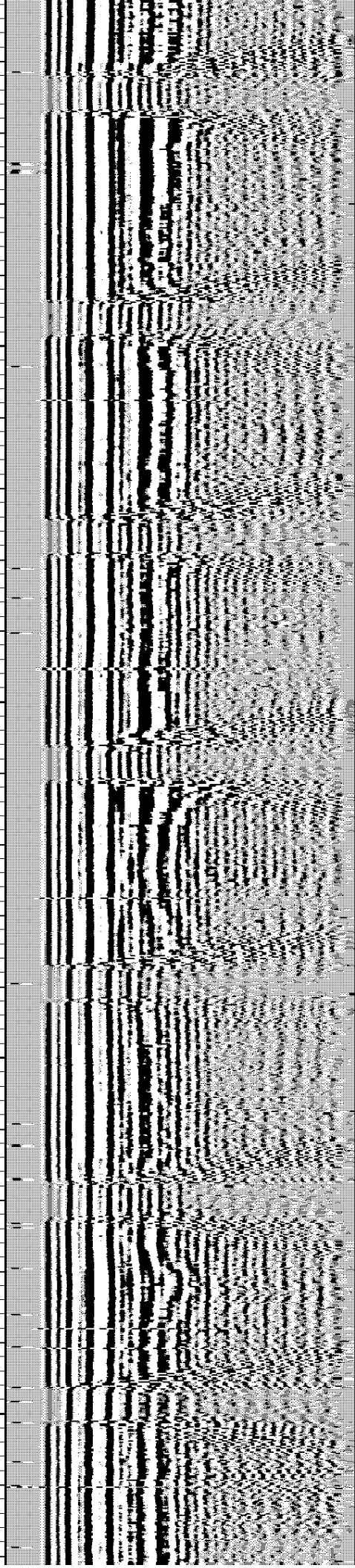
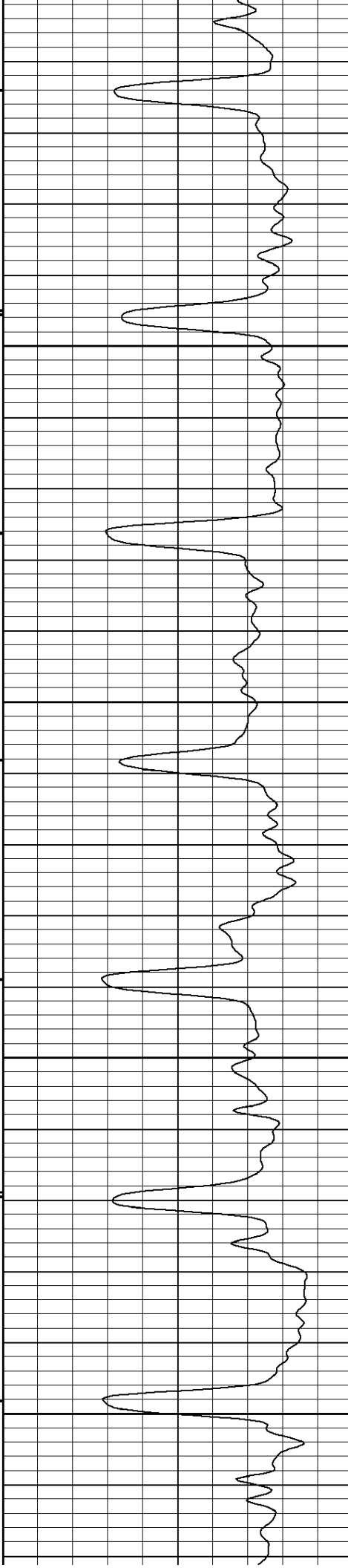
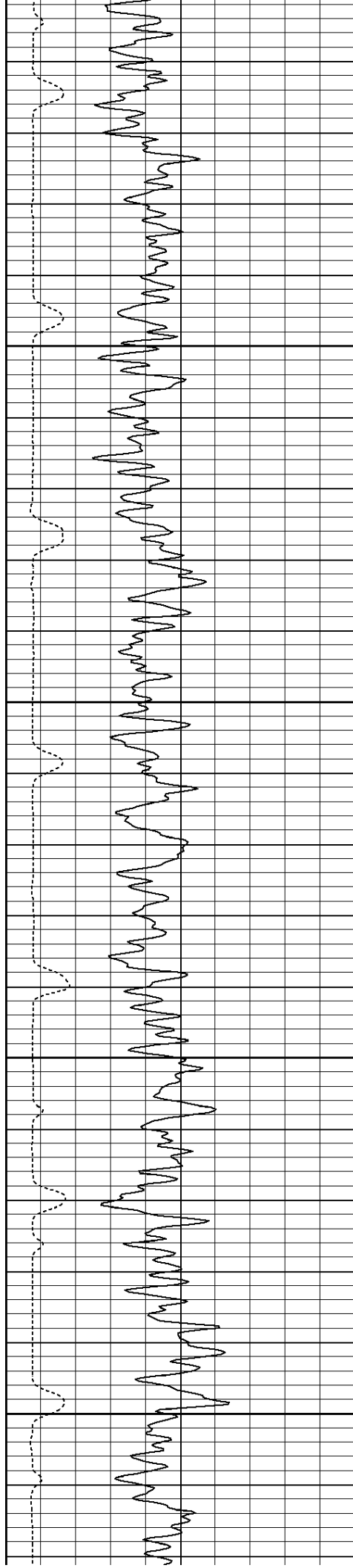


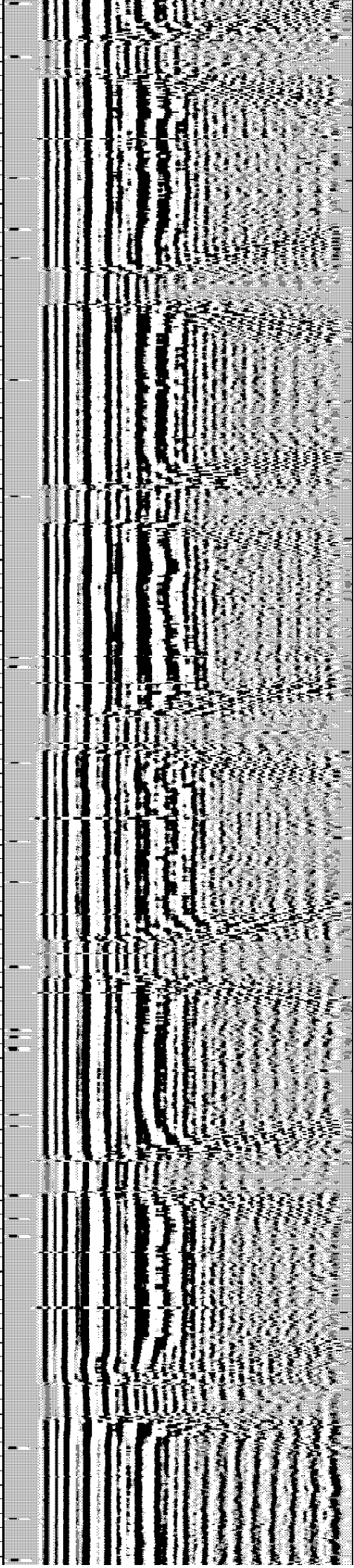
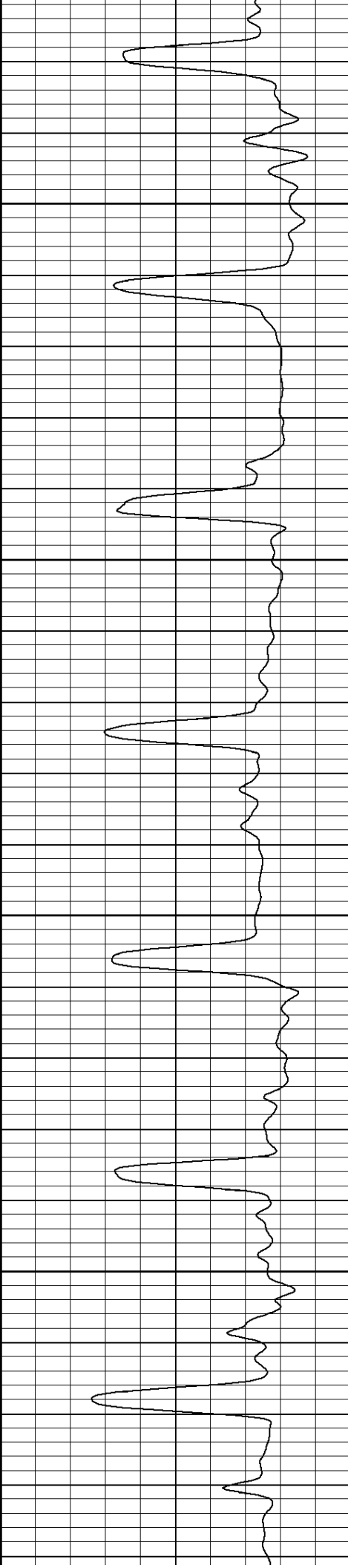
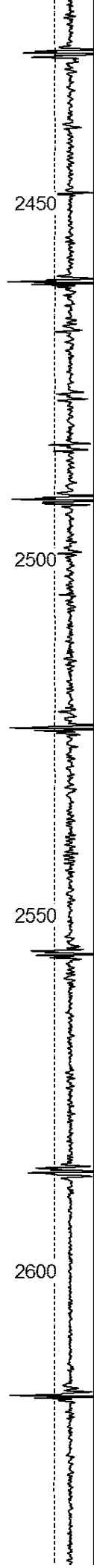
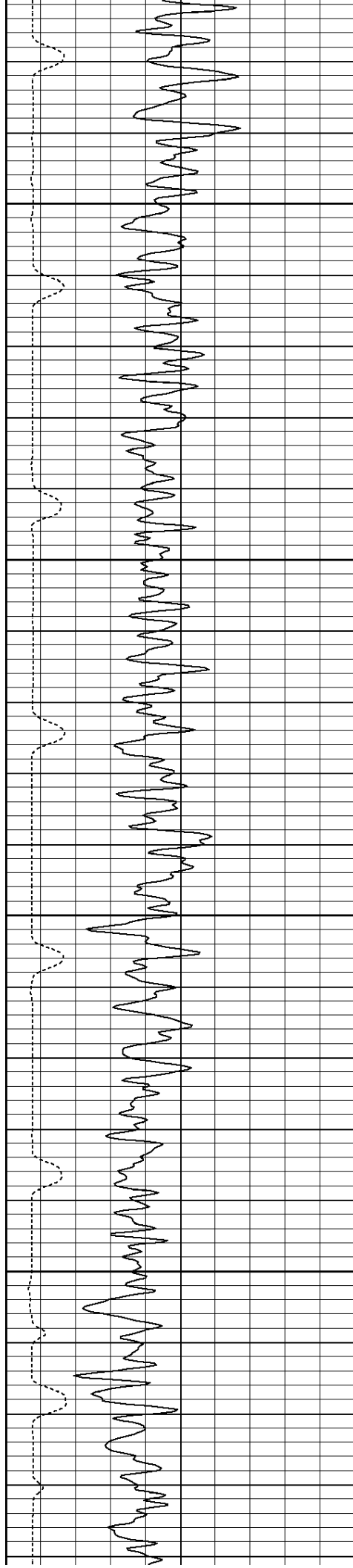


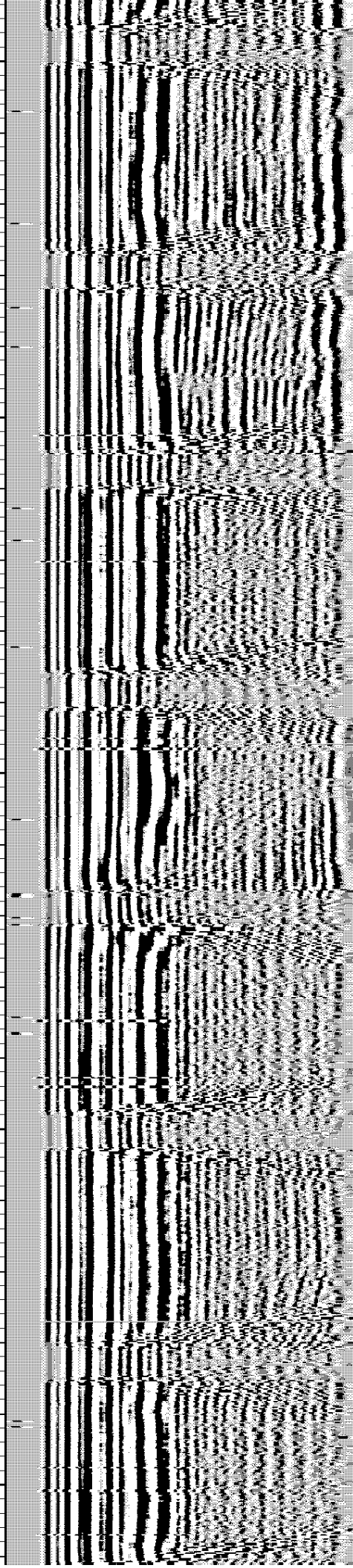
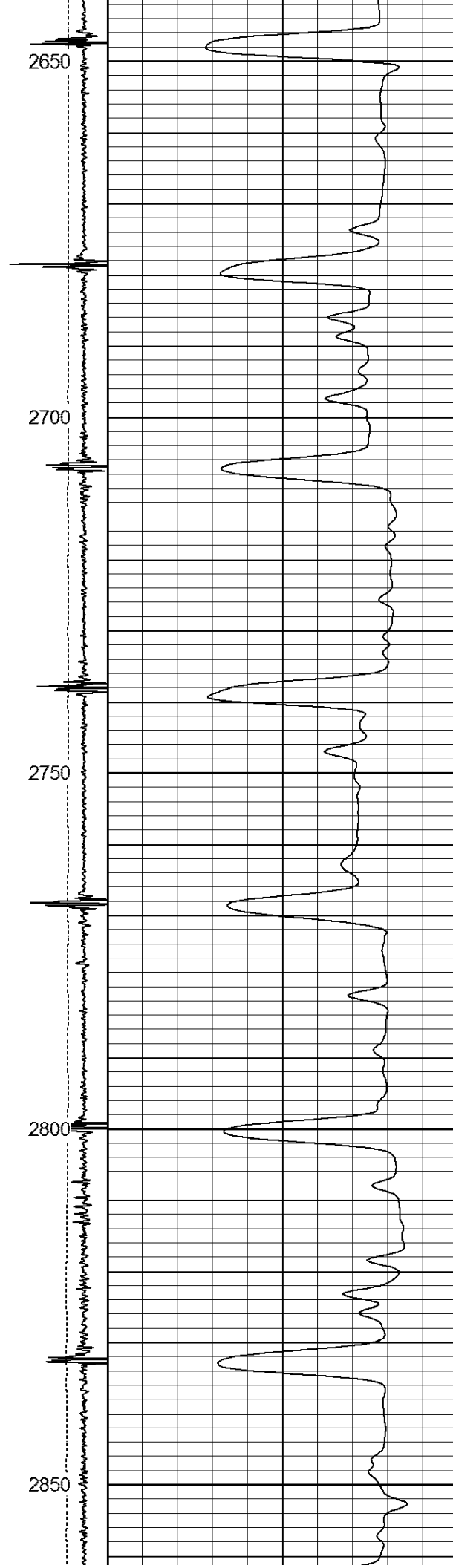
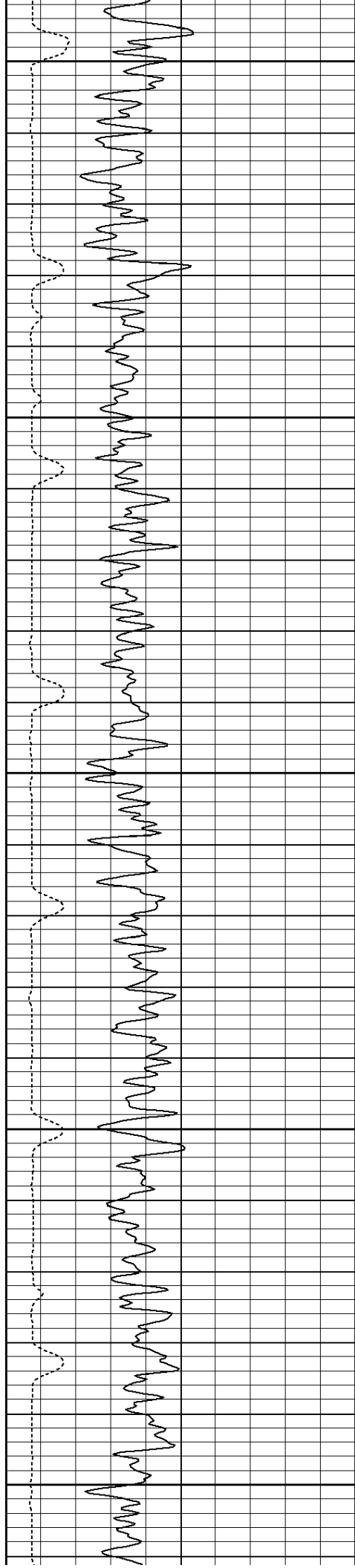


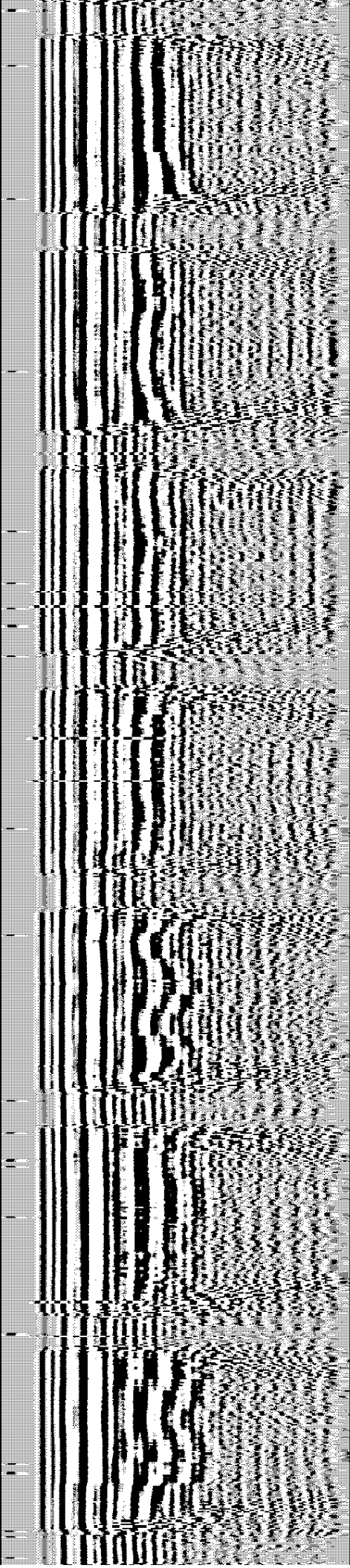
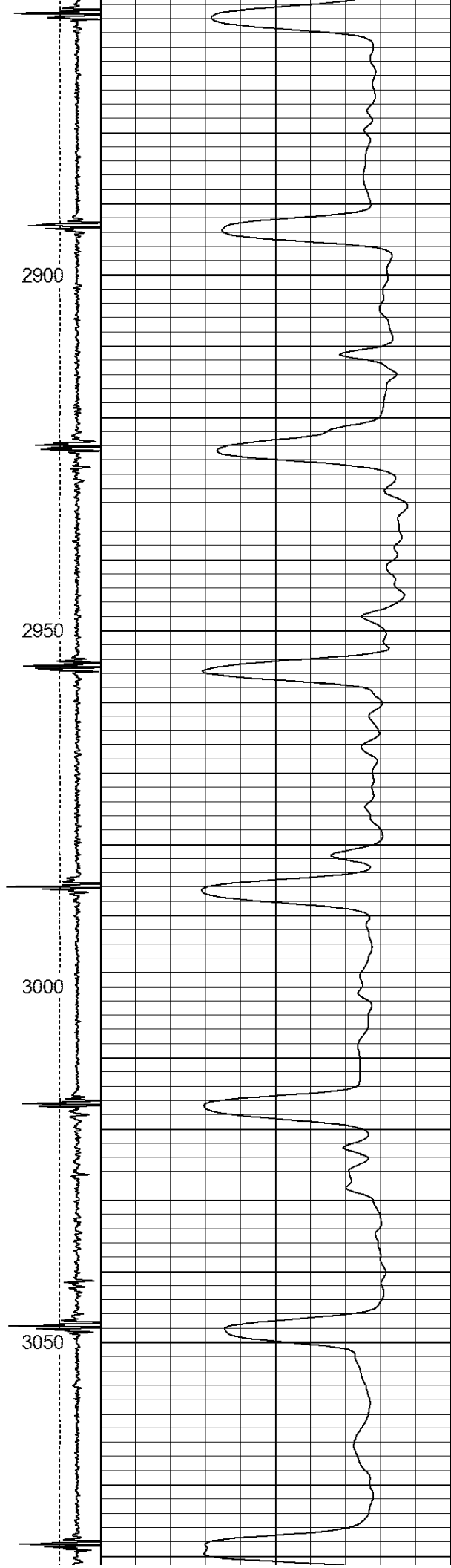
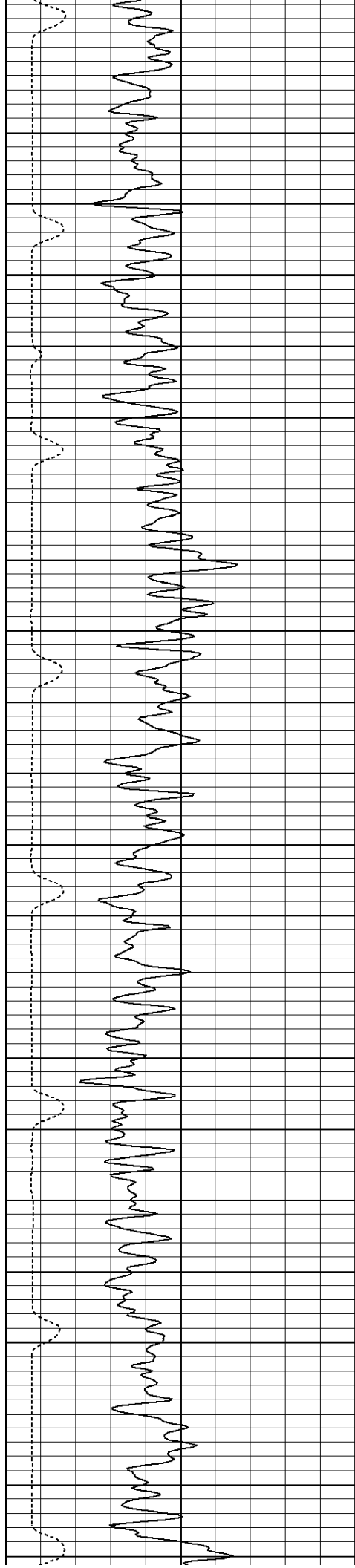


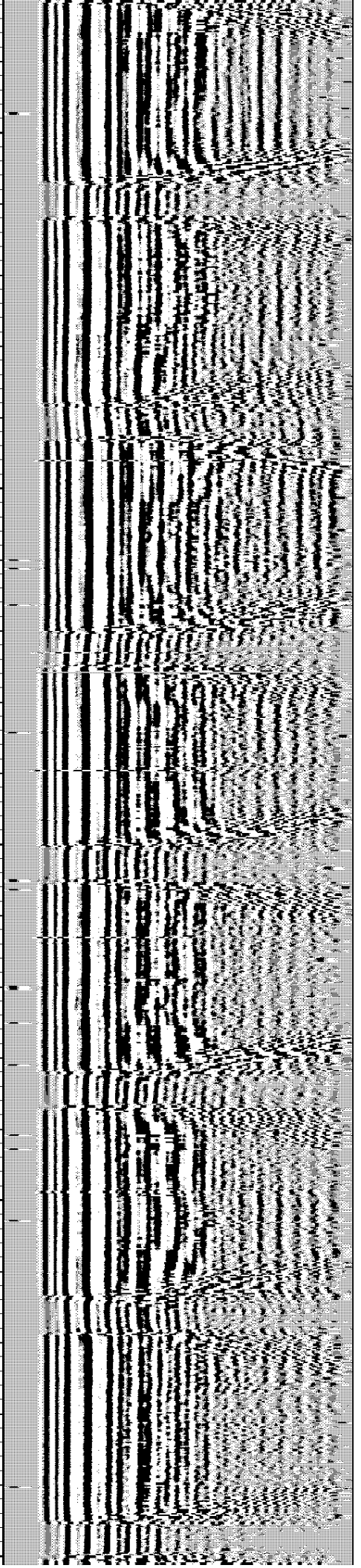
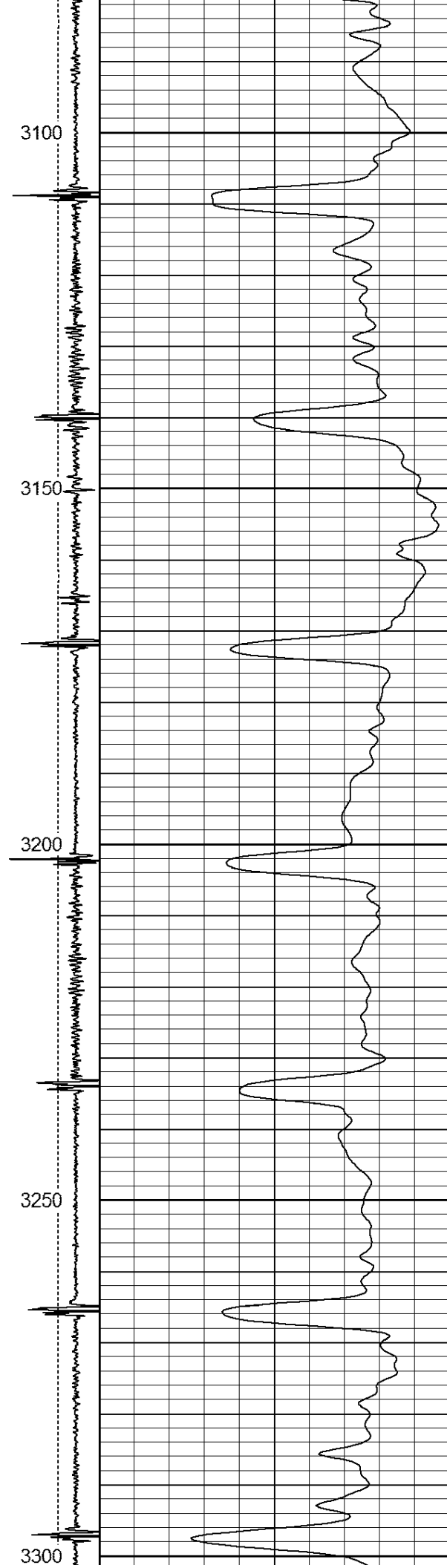
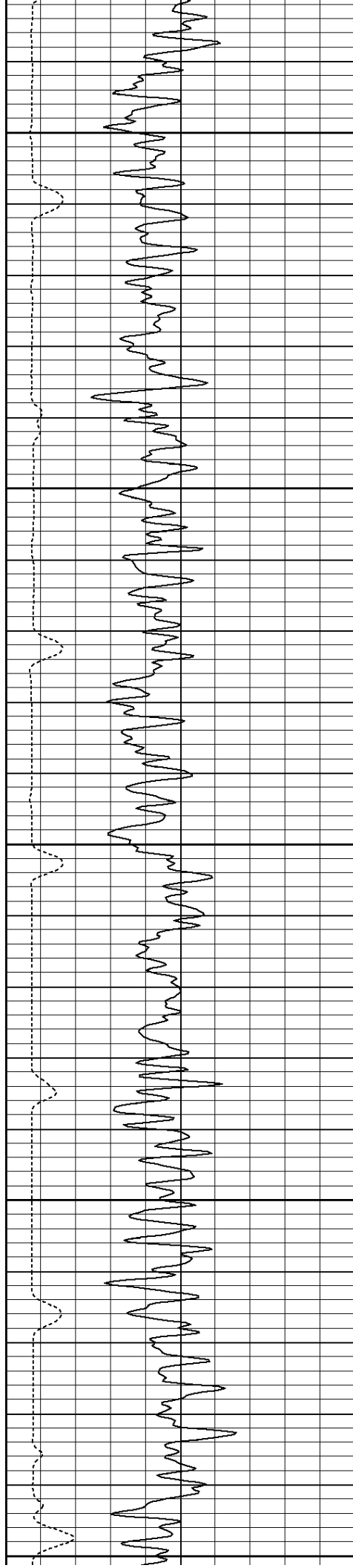


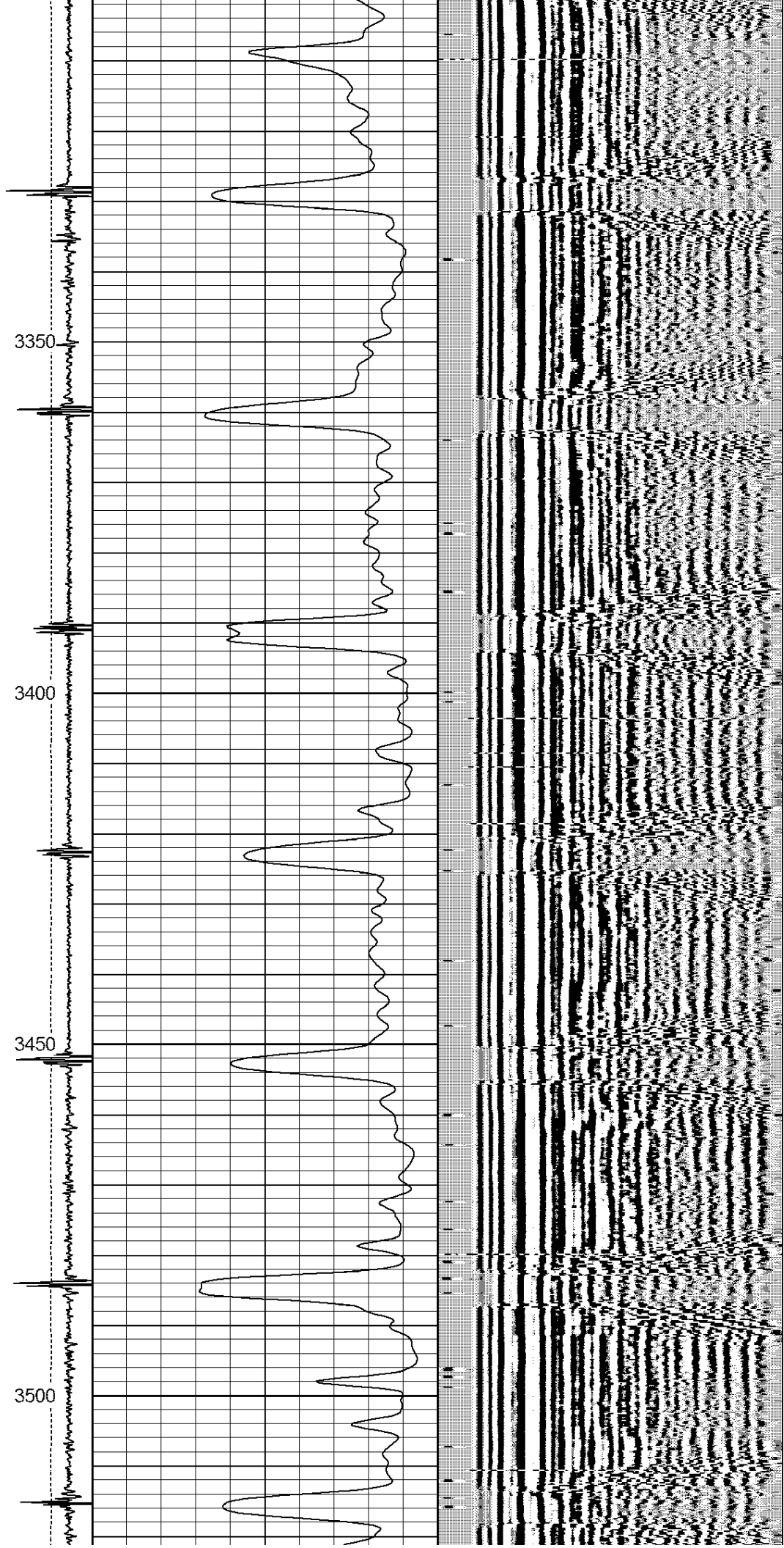
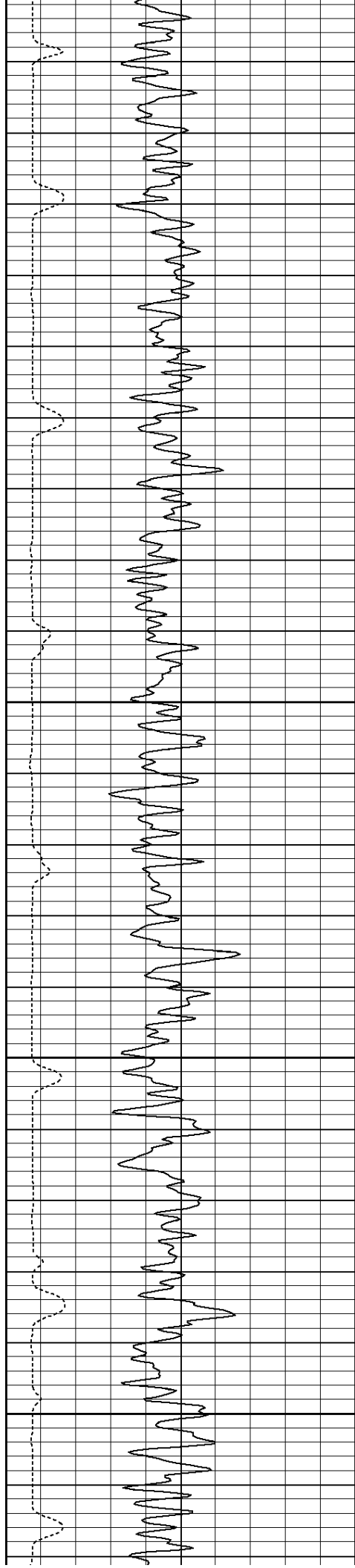


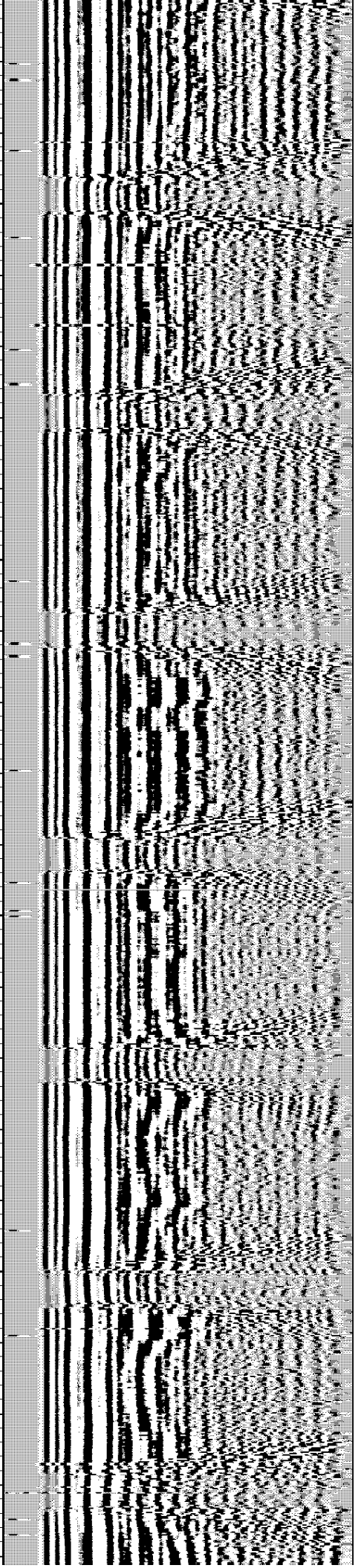
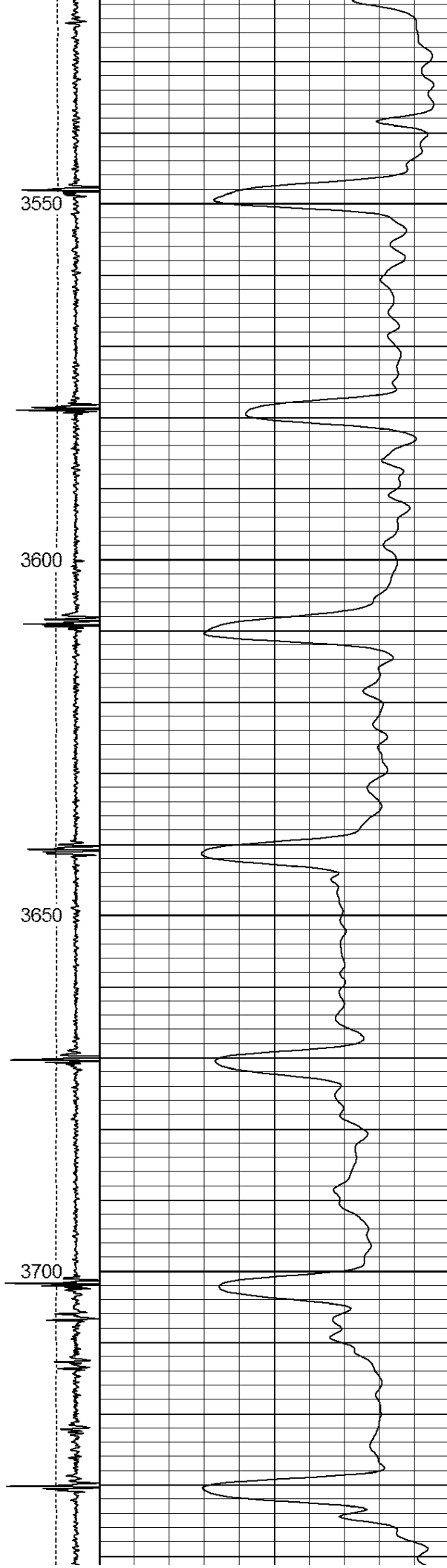
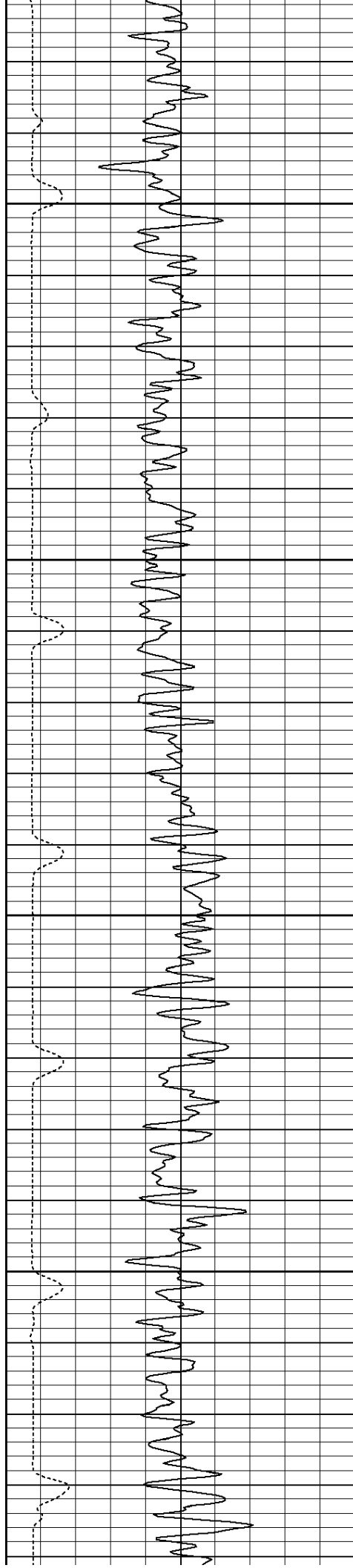


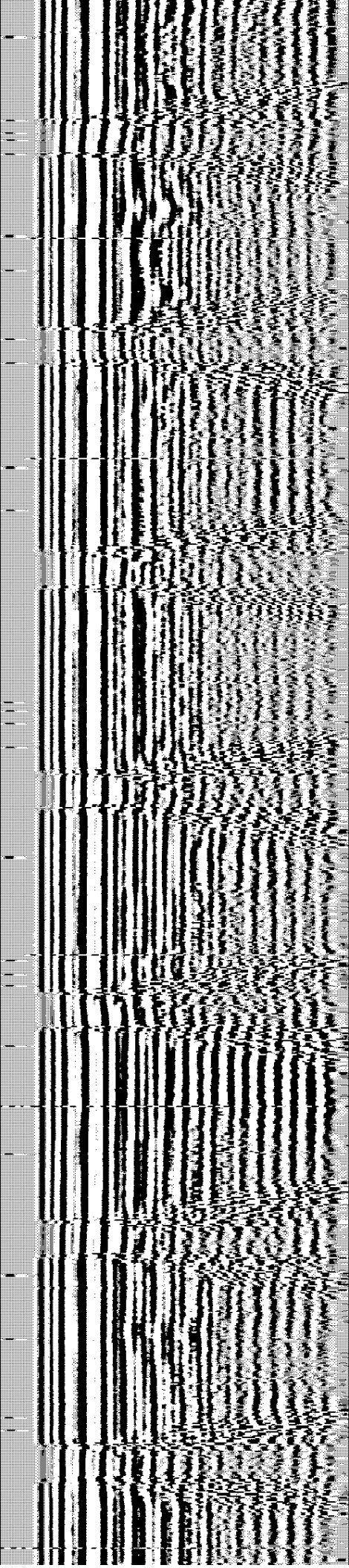
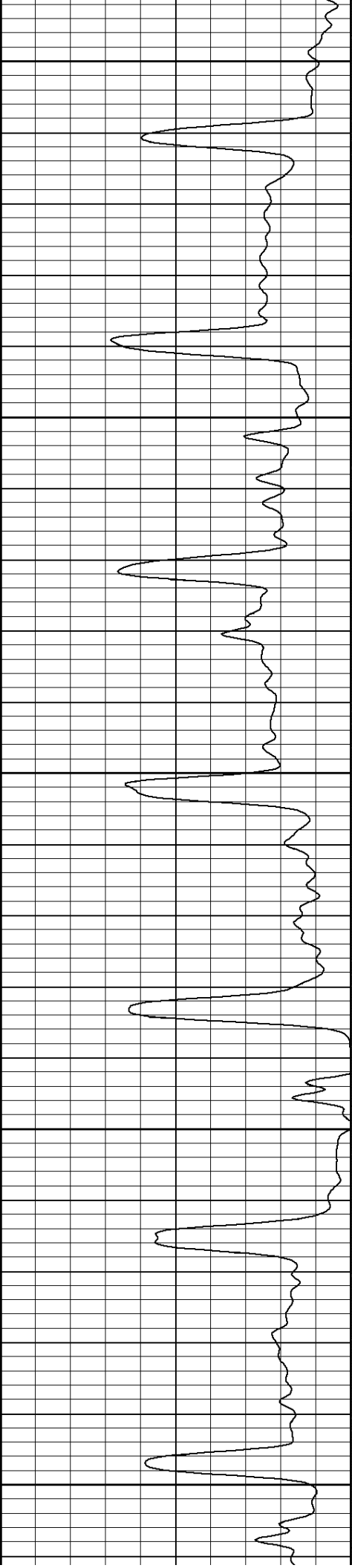
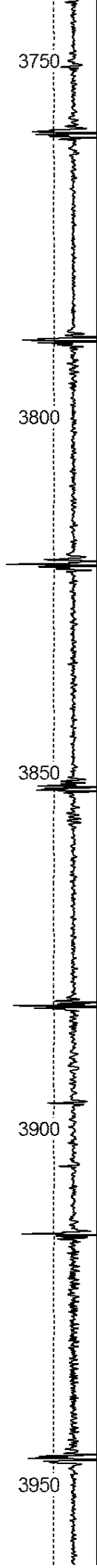
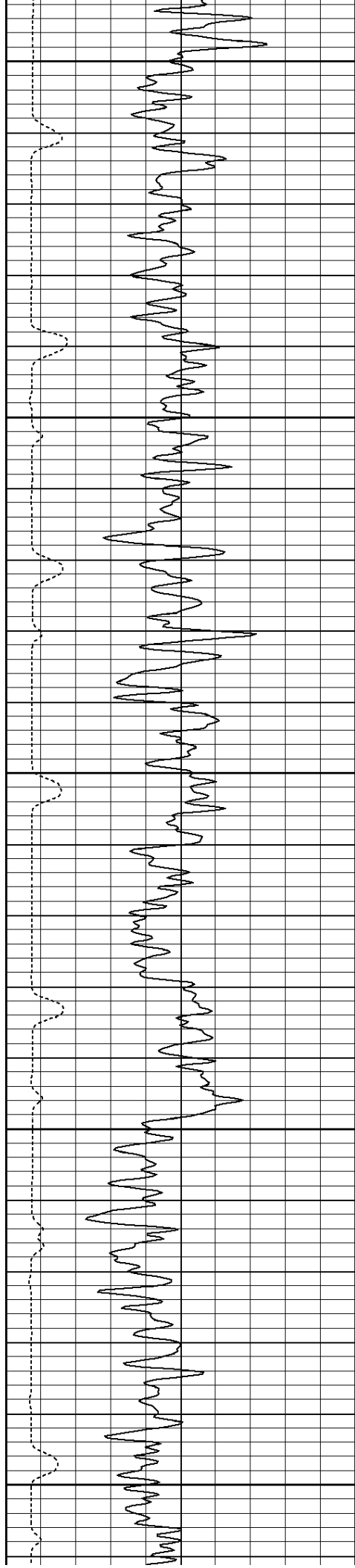


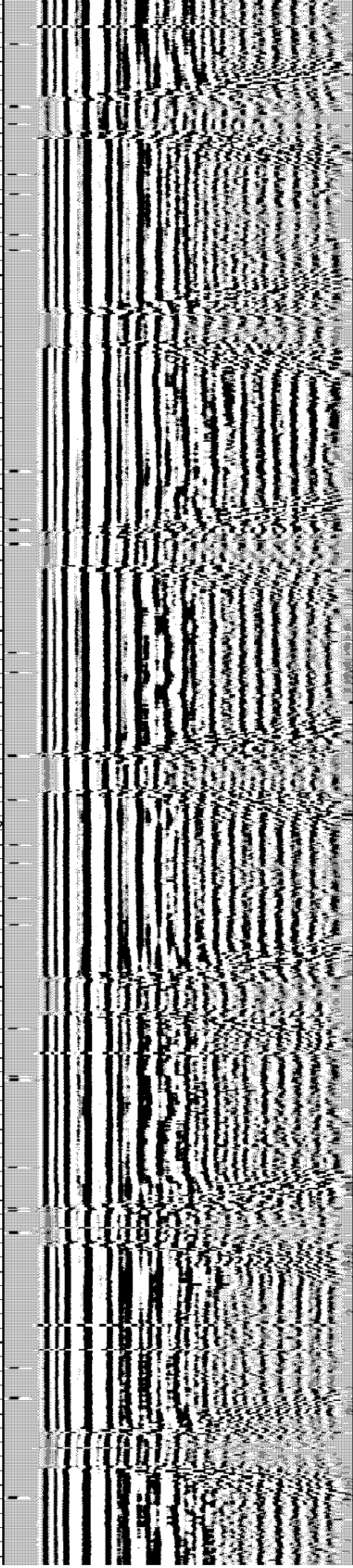
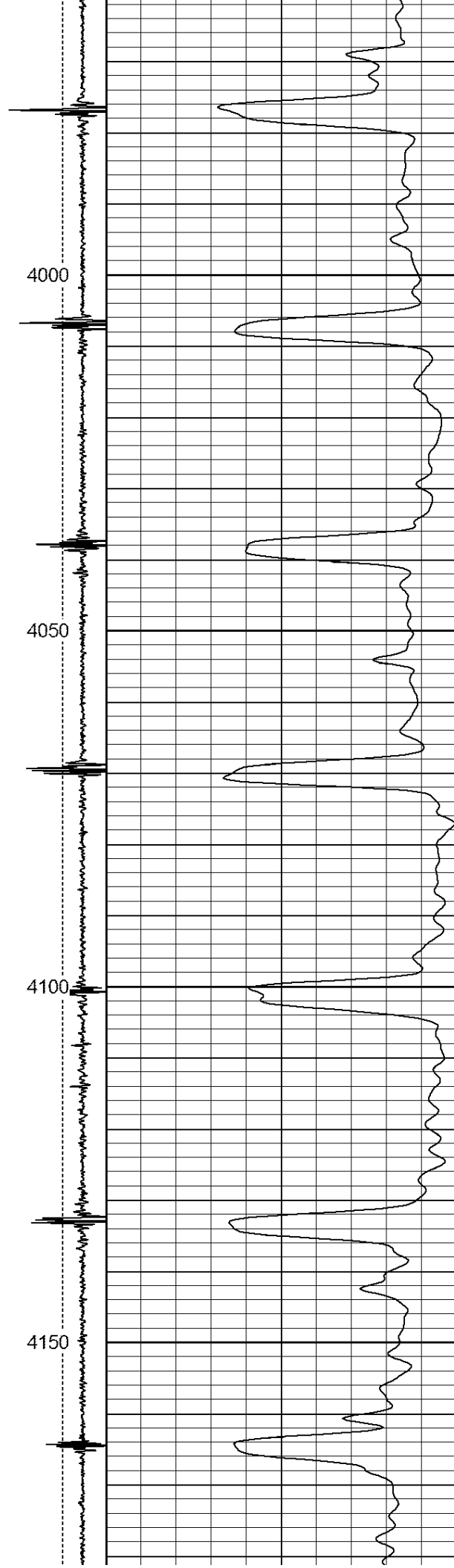
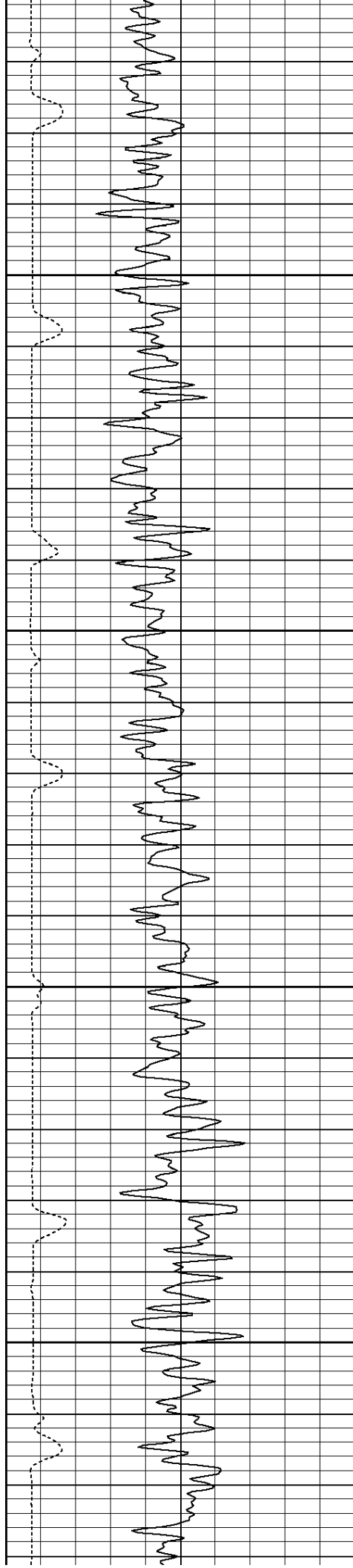


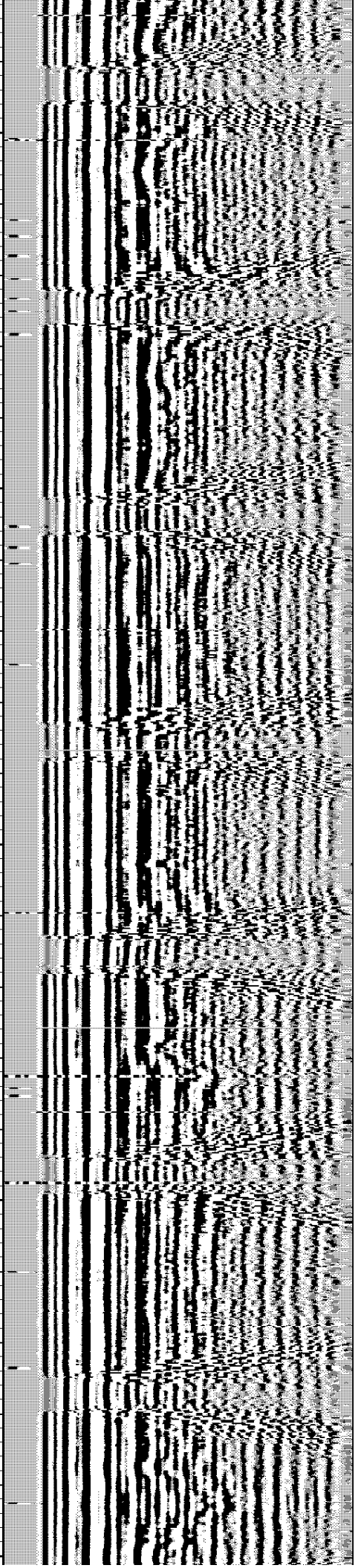
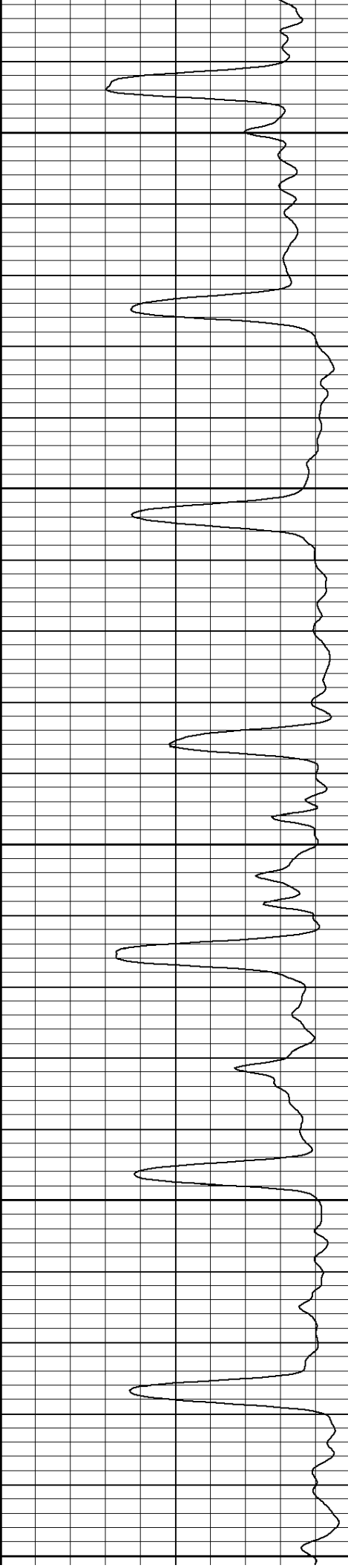
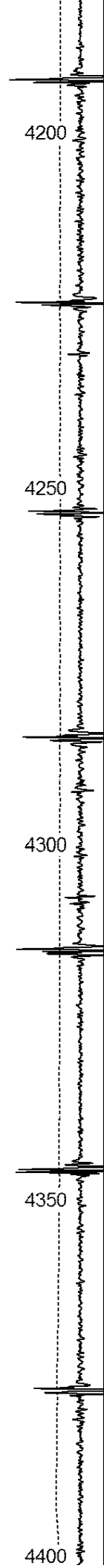
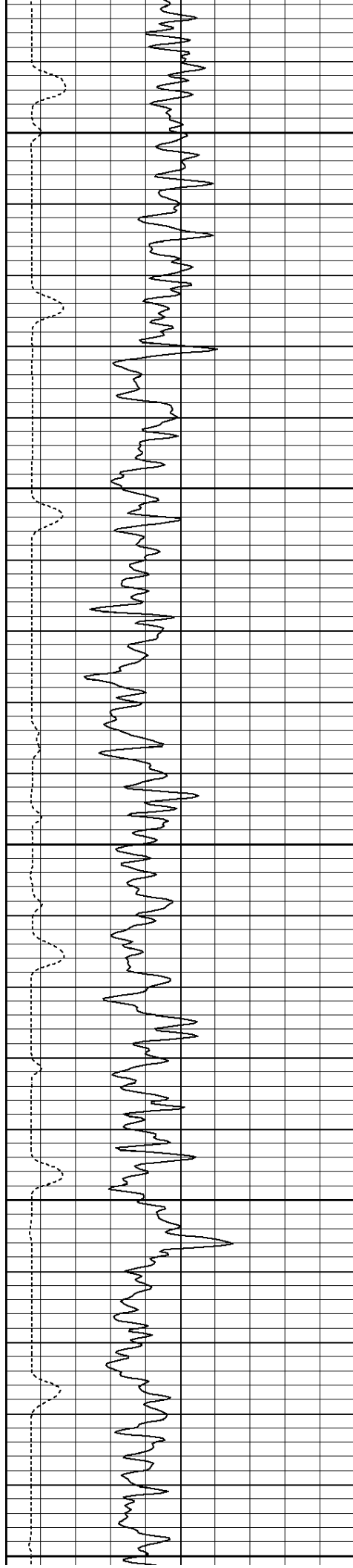


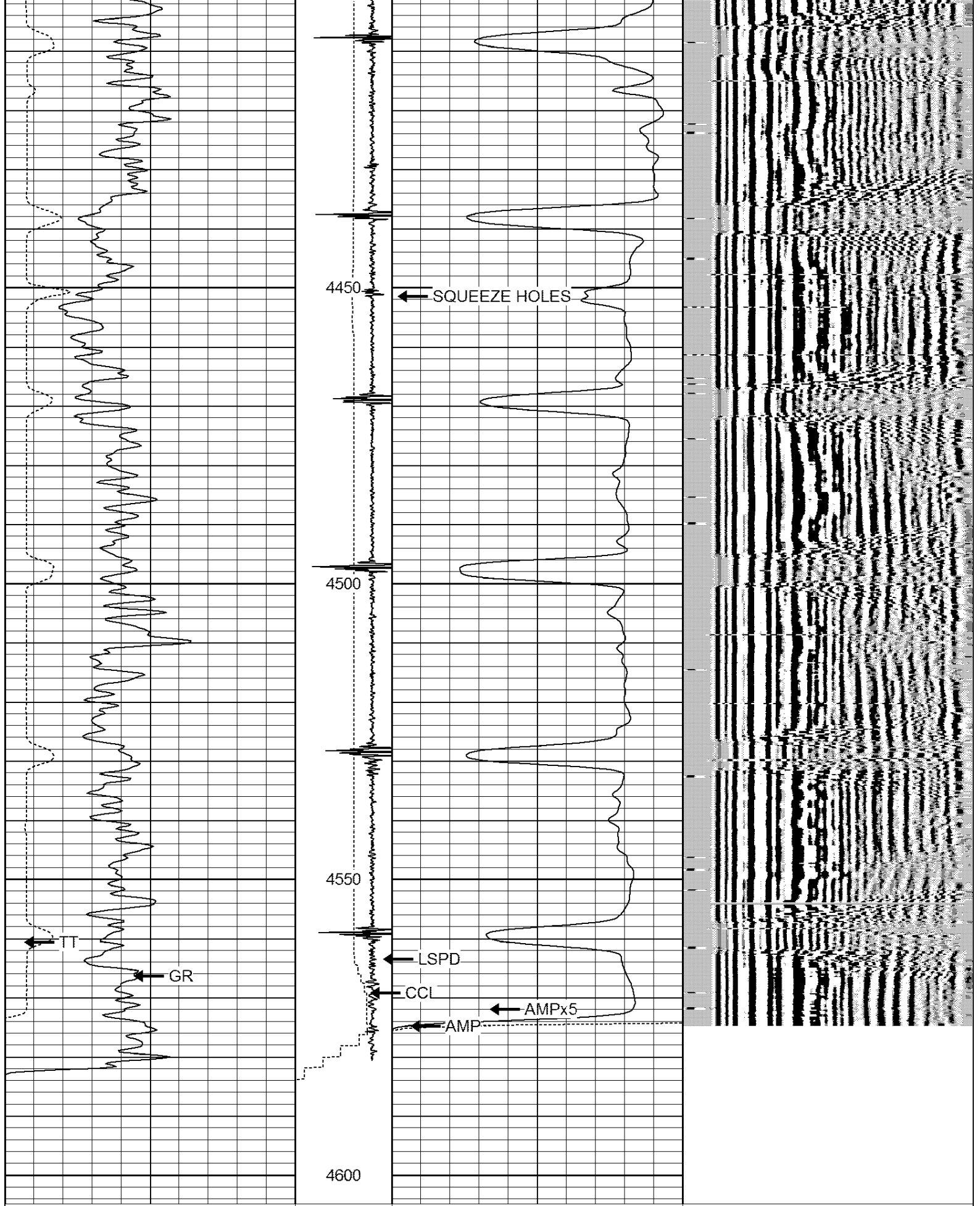




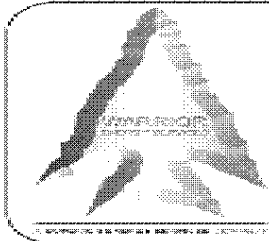








150	TT (usec)	800	4	CCL	1	0	AMP (mV)	105	200	VDL	1200
0	GR (cps)	200		LSPD	0		AMPx5 (mV)	20			
200	GR (cps)	400		(ft/min)							
			0	150							



WARRIOR

ENERGY SERVICES

Company KERR McGEE OIL AND GAS

Well KUIPERS RED V 12-6

Field WATTENBERG

County WELD

State CO