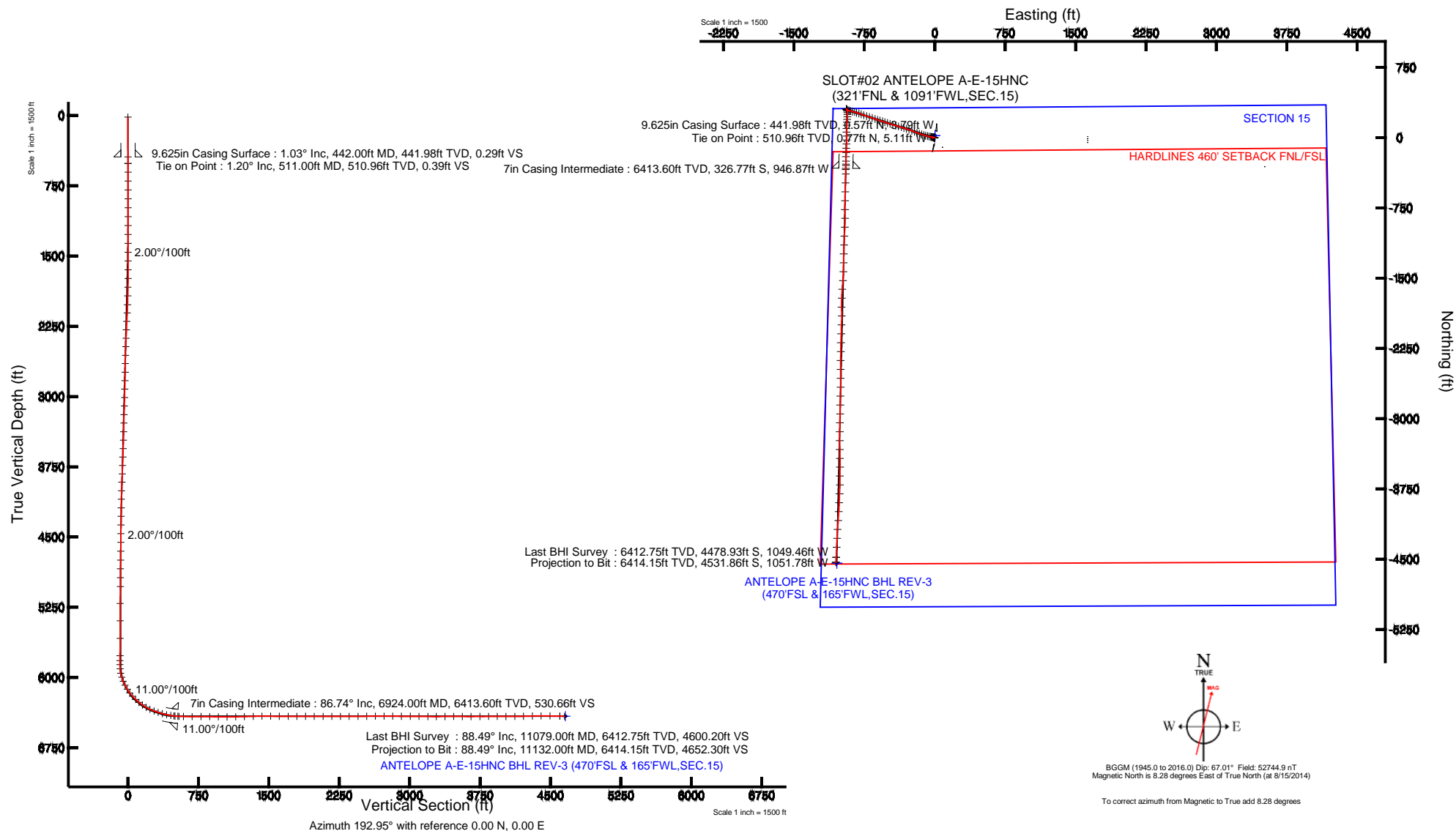


Location:	COLORADO	Slot:	SLOT#02 ANTELOPE A-E-15HNC (321'FNL & 1091'FWL,SEC.15)
Field:	WELD COUNTY	Well:	ANTELOPE A-E-15HNC
Facility:	SEC.15-T5N-R62W	Wellbore:	ANTELOPE A-E-15HNC PWB

Plot reference wellpath is ANTELOPE A-E-15HNC (REV-C.0) PWP	
True vertical depths are referenced to RIG (RKB)	Grid System: NAD83 / Lambert Colorado SP, Northern Zone (501), US feet
Measured depths are referenced to RIG (RKB)	North Reference: True north
RIG (RKB) to Mean Sea Level: 4715 feet	Scale: True distance
Mean Sea Level to Mud line (At Slot: SLOT#02 ANTELOPE A-E-15HNC (321°FNL & 1091°FWL,SEC.15)): 0 feet	Depths are in feet
Coordinates are in feet referenced to Slot	Created by: guenaler on 11/1/2014

Facility Name			Grid East (US ft)	Grid North (US ft)	Latitude	Longitude
SEC.15-T5N-R62W			3330010.500	1393097.073	40°24'23.040"N	104°18'53.784"W
Slot	Local N (ft)	Local E (ft)	Grid East (US ft)	Grid North (US ft)	Latitude	Longitude
SLOT#02 ANTELOPE A-E-15HNC (321°FNL & 1091°FWL,SEC.15)	-21.86	-2.78	3330008.008	1393075.179	40°24'22.824"N	104°18'53.820"W
RIG (RKB) to Mud line (At Slot: SLOT#02 ANTELOPE A-E-15HNC (321°FNL & 1091°FWL,SEC.15))					4715R	
Mean Sea Level to Mud line (At Slot: SLOT#02 ANTELOPE A-E-15HNC (321°FNL & 1091°FWL,SEC.15))					0R	
RIG (RKB) to Mean Sea Level					4715R	





Actual Wellpath Report

ANTELOPE A-E-15HNC AWP

Page 1 of 8



REFERENCE WELLPATH IDENTIFICATION

Operator	BONANZA CREEK OIL COMPANY	Slot	SLOT#02 ANTELOPE A-E-15HNC (321'FNL & 1091'FWL,SEC.15)
Area	COLORADO	Well	ANTELOPE A-E-15HNC
Field	WELD COUNTY	Wellbore	ANTELOPE A-E-15HNC AWB
Facility	SEC.15-T5N-R62W		

REPORT SETUP INFORMATION

Projection System	NAD83 / Lambert Colorado SP, Northern Zone (501), US feet	Software System	WellArchitect® 4.0.0
North Reference	True	User	Guenaler
Scale	0.999961	Report Generated	11/1/2014 at 4:07:19 PM
Convergence at slot	n/a	Database/Source file	WA_Denver/ANTELOPE_A-E-15HNC_AWB.xml

WELLPATH LOCATION

	Local coordinates		Grid coordinates		Geographic coordinates	
	North[ft]	East[ft]	Easting[US ft]	Northing[US ft]	Latitude	Longitude
Slot Location	-21.86	-2.78	3330008.01	1393075.18	40°24'22.824"N	104°18'53.820"W
Facility Reference Pt			3330010.50	1393097.07	40°24'23.040"N	104°18'53.784"W
Field Reference Pt			3335925.10	1457282.25	40°34'56.460"N	104°17'26.016"W

WELLPATH DATUM

Calculation method	Minimum curvature	RIG (RKB) to Facility Vertical Datum	4715.00ft
Horizontal Reference Pt	Slot	RIG (RKB) to Mean Sea Level	4715.00ft
Vertical Reference Pt	RIG (RKB)	RIG (RKB) to Mud Line at Slot (SLOT#02 ANTELOPE A-E-15HNC (321'FNL & 1091'FWL,SEC.15))	4715.00ft
MD Reference Pt	RIG (RKB)	Section Origin	N 0.00, E 0.00 ft
Field Vertical Reference	Mean Sea Level	Section Azimuth	192.95°



Actual Wellpath Report

ANTELOPE A-E-15HNC AWP

Page 2 of 8



REFERENCE WELLPATH IDENTIFICATION

Operator	BONANZA CREEK OIL COMPANY	Slot	SLOT#02 ANTELOPE A-E-15HNC (321'FNL & 1091'FWL,SEC.15)
Area	COLORADO	Well	ANTELOPE A-E-15HNC
Field	WELD COUNTY	Wellbore	ANTELOPE A-E-15HNC AWP
Facility	SEC.15-T5N-R62W		

WELLPATH DATA (124 stations) † = interpolated/extrapolated station

MD [ft]	Inclination [°]	Azimuth [°]	TVD [ft]	Vert Sect [ft]	North [ft]	East [ft]	Latitude	Longitude	DLS [°/100ft]	Comments
0.00†	0.000	278.610	0.00	0.00	0.00	0.00	40°24'22.824"N	104°18'53.820"W	0.00	
17.00	0.000	278.610	17.00	0.00	0.00	0.00	40°24'22.824"N	104°18'53.820"W	0.00	
511.00	1.200	278.610	510.96	0.39	0.77	-5.11	40°24'22.832"N	104°18'53.886"W	0.24	Tie on Point
606.00	1.190	271.760	605.94	0.66	0.95	-7.08	40°24'22.833"N	104°18'53.912"W	0.15	
700.00	1.200	276.270	699.92	0.96	1.09	-9.04	40°24'22.835"N	104°18'53.937"W	0.10	
795.00	1.120	277.400	794.90	1.17	1.32	-10.95	40°24'22.837"N	104°18'53.962"W	0.09	
890.00	1.200	273.780	889.88	1.42	1.50	-12.86	40°24'22.839"N	104°18'53.986"W	0.11	
985.00	1.560	277.440	984.86	1.70	1.74	-15.14	40°24'22.841"N	104°18'54.016"W	0.39	
1080.00	2.550	292.410	1079.79	1.48	2.71	-18.37	40°24'22.851"N	104°18'54.057"W	1.18	
1175.00	3.690	294.610	1174.65	0.51	4.79	-23.11	40°24'22.871"N	104°18'54.119"W	1.21	
1270.00	4.060	274.220	1269.44	0.40	6.31	-29.24	40°24'22.886"N	104°18'54.198"W	1.49	
1366.00	5.280	277.500	1365.12	1.34	7.14	-37.01	40°24'22.895"N	104°18'54.298"W	1.30	
1461.00	7.160	280.430	1459.56	2.01	8.78	-47.16	40°24'22.911"N	104°18'54.430"W	2.01	
1556.00	9.680	285.270	1553.53	1.95	11.96	-60.69	40°24'22.942"N	104°18'54.605"W	2.75	
1652.00	10.790	284.160	1648.00	1.43	16.28	-77.19	40°24'22.985"N	104°18'54.818"W	1.17	
1747.00	12.050	284.730	1741.11	0.94	20.98	-95.41	40°24'23.031"N	104°18'55.053"W	1.33	
1842.00	13.640	287.660	1833.73	-0.29	26.90	-115.67	40°24'23.090"N	104°18'55.315"W	1.81	
1937.00	14.780	288.610	1925.83	-2.40	34.16	-137.83	40°24'23.162"N	104°18'55.602"W	1.22	
2035.00	16.470	288.470	2020.20	-4.97	42.55	-162.86	40°24'23.244"N	104°18'55.925"W	1.72	
2126.00	18.390	292.350	2107.02	-8.56	52.10	-188.37	40°24'23.339"N	104°18'56.255"W	2.47	
2221.00	18.730	290.910	2197.08	-13.12	63.24	-216.48	40°24'23.449"N	104°18'56.618"W	0.60	
2316.00	18.650	289.980	2287.07	-17.09	73.88	-245.00	40°24'23.554"N	104°18'56.987"W	0.32	
2412.00	18.770	288.540	2378.00	-20.47	84.03	-274.07	40°24'23.654"N	104°18'57.363"W	0.50	
2507.00	17.560	288.750	2468.26	-23.41	93.50	-302.14	40°24'23.748"N	104°18'57.726"W	1.28	
2603.00	17.510	289.430	2559.80	-26.50	102.96	-329.47	40°24'23.841"N	104°18'58.079"W	0.22	
2697.00	18.300	284.810	2649.25	-28.58	111.43	-357.07	40°24'23.925"N	104°18'58.436"W	1.73	
2793.00	18.530	286.160	2740.34	-29.92	119.53	-386.30	40°24'24.005"N	104°18'58.814"W	0.50	
2888.00	19.630	288.390	2830.12	-32.28	128.77	-415.94	40°24'24.096"N	104°18'59.197"W	1.39	
2984.00	19.040	285.690	2920.71	-34.55	138.09	-446.32	40°24'24.189"N	104°18'59.589"W	1.12	
3079.00	18.260	286.630	3010.72	-36.25	146.54	-475.50	40°24'24.272"N	104°18'59.967"W	0.88	



Actual Wellpath Report

ANTELOPE A-E-15HNC AWP

Page 3 of 8



REFERENCE WELLPATH IDENTIFICATION

Operator	BONANZA CREEK OIL COMPANY	Slot	SLOT#02 ANTELOPE A-E-15HNC (321'FNL & 1091'FWL,SEC.15)
Area	COLORADO	Well	ANTELOPE A-E-15HNC
Field	WELD COUNTY	Wellbore	ANTELOPE A-E-15HNC AWB
Facility	SEC.15-T5N-R62W		

WELLPATH DATA (124 stations)

MD [ft]	Inclination [°]	Azimuth [°]	TVD [ft]	Vert Sect [ft]	North [ft]	East [ft]	Latitude	Longitude	DLS [°/100ft]	Comments
3174.00	18.230	288.880	3100.94	-38.74	155.61	-503.82	40°24'24.362"N	104°19'00.333"W	0.74	
3270.00	16.950	289.810	3192.45	-41.96	165.21	-531.19	40°24'24.456"N	104°19'00.687"W	1.37	
3364.00	16.010	285.730	3282.59	-44.23	173.37	-556.56	40°24'24.537"N	104°19'01.015"W	1.59	
3460.00	16.680	288.300	3374.71	-46.15	181.28	-582.39	40°24'24.615"N	104°19'01.348"W	1.03	
3555.00	17.300	287.250	3465.57	-48.48	189.75	-608.82	40°24'24.699"N	104°19'01.690"W	0.73	
3650.00	18.510	290.020	3555.97	-51.40	199.11	-636.48	40°24'24.791"N	104°19'02.048"W	1.56	
3746.00	19.510	288.720	3646.73	-54.89	209.47	-665.98	40°24'24.894"N	104°19'02.429"W	1.13	
3840.00	20.060	288.780	3735.18	-58.10	219.70	-696.11	40°24'24.995"N	104°19'02.818"W	0.59	
3936.00	19.310	288.700	3825.57	-61.36	230.08	-726.73	40°24'25.098"N	104°19'03.214"W	0.78	
4030.00	18.270	290.100	3914.56	-64.76	240.13	-755.29	40°24'25.197"N	104°19'03.583"W	1.21	
4126.00	17.160	289.160	4006.00	-68.16	249.95	-782.80	40°24'25.294"N	104°19'03.939"W	1.19	
4221.00	16.050	286.560	4097.04	-70.50	258.29	-808.63	40°24'25.376"N	104°19'04.273"W	1.41	
4315.00	14.070	287.560	4187.81	-72.24	265.45	-831.98	40°24'25.447"N	104°19'04.575"W	2.12	
4410.00	14.030	285.470	4279.97	-73.67	272.00	-854.09	40°24'25.512"N	104°19'04.861"W	0.54	
4505.00	13.180	287.050	4372.30	-74.95	278.25	-875.54	40°24'25.573"N	104°19'05.138"W	0.98	
4599.00	11.700	286.030	4464.09	-76.23	284.02	-894.95	40°24'25.630"N	104°19'05.389"W	1.59	
4694.00	8.820	282.720	4557.56	-76.72	288.29	-911.32	40°24'25.673"N	104°19'05.600"W	3.09	
4789.00	6.910	288.020	4651.67	-77.20	291.66	-923.86	40°24'25.706"N	104°19'05.762"W	2.15	
4883.00	4.100	294.200	4745.23	-78.35	294.79	-932.30	40°24'25.737"N	104°19'05.872"W	3.05	
4977.00	1.820	327.350	4839.10	-80.05	297.42	-936.17	40°24'25.763"N	104°19'05.922"W	2.94	
5071.00	0.570	313.770	4933.08	-81.34	299.00	-937.31	40°24'25.778"N	104°19'05.936"W	1.35	
5166.00	0.770	298.010	5028.07	-81.74	299.63	-938.22	40°24'25.785"N	104°19'05.948"W	0.28	
5348.00	0.650	314.000	5210.06	-82.59	300.92	-940.04	40°24'25.797"N	104°19'05.972"W	0.13	
5533.00	0.350	331.250	5395.05	-83.56	302.14	-941.07	40°24'25.810"N	104°19'05.985"W	0.18	
5719.00	0.130	110.050	5581.05	-83.96	302.57	-941.14	40°24'25.814"N	104°19'05.986"W	0.25	
5906.00	0.730	37.780	5768.04	-85.01	303.44	-940.21	40°24'25.822"N	104°19'05.974"W	0.38	
5958.00	0.870	53.040	5820.04	-85.61	303.94	-939.70	40°24'25.827"N	104°19'05.967"W	0.49	
6000.00	0.900	94.070	5862.03	-85.91	304.11	-939.11	40°24'25.829"N	104°19'05.960"W	1.48	
6046.00	5.990	161.540	5907.94	-83.91	301.80	-937.99	40°24'25.806"N	104°19'05.945"W	12.40	
6092.00	12.550	161.720	5953.32	-77.58	294.77	-935.66	40°24'25.737"N	104°19'05.915"W	14.26	



Actual Wellpath Report

ANTELOPE A-E-15HNC AWP

Page 4 of 8



REFERENCE WELLPATH IDENTIFICATION			
Operator	BONANZA CREEK OIL COMPANY	Slot	SLOT#02 ANTELOPE A-E-15HNC (321'FNL & 1091'FWL,SEC.15)
Area	COLORADO	Well	ANTELOPE A-E-15HNC
Field	WELD COUNTY	Wellbore	ANTELOPE A-E-15HNC AWB
Facility	SEC.15-T5N-R62W		

WELLPATH DATA (124 stations)

MD [ft]	Inclination [°]	Azimuth [°]	TVD [ft]	Vert Sect [ft]	North [ft]	East [ft]	Latitude	Longitude	DLS [°/100ft]	Comments
6138.00	19.000	167.860	5997.57	-66.52	282.69	-932.51	40°24'25.617"N	104°19'05.874"W	14.46	
6184.00	23.990	177.600	6040.37	-50.70	266.01	-930.55	40°24'25.452"N	104°19'05.849"W	13.30	
6230.00	27.610	181.390	6081.78	-31.23	246.01	-930.41	40°24'25.255"N	104°19'05.847"W	8.64	
6279.00	31.170	182.110	6124.46	-7.65	221.98	-931.16	40°24'25.017"N	104°19'05.857"W	7.30	
6326.00	36.800	186.040	6163.42	18.30	195.80	-933.09	40°24'24.759"N	104°19'05.882"W	12.85	
6374.00	42.640	185.140	6200.33	48.70	165.28	-936.06	40°24'24.457"N	104°19'05.920"W	12.23	
6421.00	46.240	183.400	6233.88	81.22	132.47	-938.49	40°24'24.133"N	104°19'05.952"W	8.09	
6469.00	50.930	181.160	6265.63	116.58	96.52	-939.90	40°24'23.778"N	104°19'05.970"W	10.38	
6516.00	57.030	178.420	6293.26	153.56	58.53	-939.72	40°24'23.402"N	104°19'05.967"W	13.81	
6564.00	60.640	178.550	6318.09	193.33	17.48	-938.64	40°24'22.997"N	104°19'05.953"W	7.52	
6611.00	65.610	180.740	6339.34	234.11	-24.43	-938.40	40°24'22.582"N	104°19'05.950"W	11.36	
6659.00	71.400	184.470	6356.92	278.02	-69.02	-940.45	40°24'22.142"N	104°19'05.977"W	14.06	
6706.00	72.020	182.140	6371.67	322.02	-113.56	-943.03	40°24'21.702"N	104°19'06.010"W	4.89	
6753.00	72.950	179.410	6385.82	365.82	-158.37	-943.63	40°24'21.259"N	104°19'06.018"W	5.88	
6800.00	79.670	182.510	6396.94	410.46	-204.00	-944.41	40°24'20.808"N	104°19'06.028"W	15.67	
6848.00	81.400	179.070	6404.84	456.74	-251.33	-945.06	40°24'20.340"N	104°19'06.036"W	7.93	
6880.00	82.340	182.420	6409.36	487.69	-283.00	-945.47	40°24'20.027"N	104°19'06.042"W	10.77	
6894.00	83.610	182.120	6411.07	501.35	-296.89	-946.02	40°24'19.890"N	104°19'06.049"W	9.32	
6937.00	88.100	180.700	6414.18	543.36	-339.75	-947.08	40°24'19.467"N	104°19'06.062"W	10.95	
6985.00	88.480	181.090	6415.61	590.28	-387.72	-947.83	40°24'18.992"N	104°19'06.072"W	1.13	
7080.00	90.280	182.040	6416.64	683.40	-482.68	-950.42	40°24'18.054"N	104°19'06.105"W	2.14	
7175.00	90.310	181.760	6416.15	776.63	-577.62	-953.57	40°24'17.116"N	104°19'06.146"W	0.30	
7270.00	88.090	181.350	6417.48	869.75	-672.57	-956.15	40°24'16.178"N	104°19'06.179"W	2.38	
7365.00	89.230	179.410	6419.70	962.44	-767.54	-956.78	40°24'15.239"N	104°19'06.187"W	2.37	
7459.00	89.570	179.360	6420.69	1053.81	-861.53	-955.77	40°24'14.311"N	104°19'06.174"W	0.37	
7554.00	92.010	183.060	6419.38	1146.79	-956.47	-957.77	40°24'13.372"N	104°19'06.200"W	4.66	
7649.00	91.670	182.090	6416.32	1240.19	-1051.33	-962.04	40°24'12.435"N	104°19'06.255"W	1.08	
7744.00	91.370	182.730	6413.80	1333.55	-1146.21	-966.03	40°24'11.497"N	104°19'06.307"W	0.74	
7839.00	90.250	180.670	6412.46	1426.71	-1241.15	-968.85	40°24'10.559"N	104°19'06.343"W	2.47	
7934.00	89.200	180.420	6412.92	1519.49	-1336.15	-969.75	40°24'09.621"N	104°19'06.355"W	1.14	



Actual Wellpath Report

ANTELOPE A-E-15HNC AWP

Page 5 of 8



REFERENCE WELLPATH IDENTIFICATION

Operator	BONANZA CREEK OIL COMPANY	Slot	SLOT#02 ANTELOPE A-E-15HNC (321'FNL & 1091'FWL,SEC.15)
Area	COLORADO	Well	ANTELOPE A-E-15HNC
Field	WELD COUNTY	Wellbore	ANTELOPE A-E-15HNC AWB
Facility	SEC.15-T5N-R62W		

WELLPATH DATA (124 stations)

MD [ft]	Inclination [°]	Azimuth [°]	TVD [ft]	Vert Sect [ft]	North [ft]	East [ft]	Latitude	Longitude	DLS [°/100ft]	Comments
8029.00	89.850	182.620	6413.71	1612.60	-1431.10	-972.27	40°24'08.682"N	104°19'06.387"W	2.41	
8123.00	89.940	184.700	6413.88	1705.36	-1524.90	-978.27	40°24'07.755"N	104°19'06.465"W	2.21	
8218.00	90.150	184.170	6413.80	1799.31	-1619.62	-985.62	40°24'06.819"N	104°19'06.560"W	0.60	
8312.00	90.000	182.380	6413.68	1891.97	-1713.46	-990.99	40°24'05.892"N	104°19'06.629"W	1.91	
8407.00	89.810	178.870	6413.84	1984.76	-1808.44	-992.03	40°24'04.953"N	104°19'06.643"W	3.70	
8503.00	89.720	179.740	6414.23	2078.05	-1904.43	-990.86	40°24'04.005"N	104°19'06.627"W	0.91	
8598.00	89.810	183.060	6414.62	2171.12	-1999.39	-993.18	40°24'03.067"N	104°19'06.657"W	3.50	
8692.00	90.000	180.650	6414.78	2263.35	-2093.33	-996.22	40°24'02.138"N	104°19'06.697"W	2.57	
8787.00	89.850	182.210	6414.90	2356.43	-2188.30	-998.60	40°24'01.200"N	104°19'06.727"W	1.65	
8882.00	90.650	180.640	6414.49	2449.51	-2283.27	-1000.96	40°24'00.261"N	104°19'06.758"W	1.85	
8977.00	90.950	180.740	6413.16	2542.34	-2378.25	-1002.10	40°23'59.323"N	104°19'06.773"W	0.33	
9072.00	90.750	180.450	6411.75	2635.13	-2473.24	-1003.09	40°23'58.384"N	104°19'06.785"W	0.37	
9167.00	89.260	179.970	6411.74	2727.79	-2568.23	-1003.44	40°23'57.445"N	104°19'06.790"W	1.65	
9262.00	89.350	180.090	6412.89	2820.37	-2663.23	-1003.49	40°23'56.507"N	104°19'06.790"W	0.16	
9357.00	90.000	181.610	6413.43	2913.26	-2758.21	-1004.90	40°23'55.568"N	104°19'06.808"W	1.74	
9452.00	89.810	180.540	6413.59	3006.22	-2853.19	-1006.68	40°23'54.630"N	104°19'06.831"W	1.14	
9547.00	89.410	181.530	6414.24	3099.17	-2948.17	-1008.39	40°23'53.691"N	104°19'06.854"W	1.12	
9643.00	88.920	181.160	6415.64	3193.20	-3044.14	-1010.65	40°23'52.743"N	104°19'06.883"W	0.64	
9737.00	90.370	179.990	6416.22	3285.01	-3138.12	-1011.59	40°23'51.814"N	104°19'06.895"W	1.98	
9832.00	90.310	180.040	6415.66	3377.60	-3233.12	-1011.61	40°23'50.875"N	104°19'06.895"W	0.08	
9927.00	90.410	179.470	6415.06	3470.09	-3328.12	-1011.21	40°23'49.937"N	104°19'06.890"W	0.61	
10022.00	88.950	178.250	6415.59	3562.22	-3423.10	-1009.32	40°23'48.998"N	104°19'06.865"W	2.00	
10116.00	90.580	180.930	6415.97	3653.67	-3517.08	-1008.65	40°23'48.069"N	104°19'06.856"W	3.34	
10212.00	89.600	180.200	6415.82	3747.43	-3613.07	-1009.59	40°23'47.121"N	104°19'06.869"W	1.27	
10307.00	90.810	181.560	6415.48	3840.33	-3708.06	-1011.05	40°23'46.182"N	104°19'06.887"W	1.92	
10401.00	89.440	182.120	6415.28	3932.56	-3802.01	-1014.07	40°23'45.254"N	104°19'06.926"W	1.57	
10496.00	90.190	181.900	6415.59	4025.83	-3896.95	-1017.40	40°23'44.316"N	104°19'06.969"W	0.82	
10591.00	90.550	183.910	6414.97	4119.37	-3991.82	-1022.22	40°23'43.378"N	104°19'07.032"W	2.15	
10686.00	91.120	183.570	6413.59	4213.13	-4086.60	-1028.41	40°23'42.441"N	104°19'07.112"W	0.70	
10781.00	91.980	184.250	6411.02	4306.92	-4181.35	-1034.89	40°23'41.505"N	104°19'07.195"W	1.15	



Actual Wellpath Report

ANTELOPE A-E-15HNC AWP

Page 6 of 8



REFERENCE WELLPATH IDENTIFICATION

Operator	BONANZA CREEK OIL COMPANY	Slot	SLOT#02 ANTELOPE A-E-15HNC (321'FNL & 1091'FWL,SEC.15)
Area	COLORADO	Well	ANTELOPE A-E-15HNC
Field	WELD COUNTY	Wellbore	ANTELOPE A-E-15HNC AWB
Facility	SEC.15-T5N-R62W		

WELLPATH DATA (124 stations)

MD [ft]	Inclination [°]	Azimuth [°]	TVD [ft]	Vert Sect [ft]	North [ft]	East [ft]	Latitude	Longitude	DLS [°/100ft]	Comments
10876.00	89.850	182.670	6409.50	4400.60	-4276.15	-1040.62	40°23'40.568"N	104°19'07.269"W	2.79	
10971.00	89.040	182.400	6410.42	4494.03	-4371.06	-1044.82	40°23'39.631"N	104°19'07.324"W	0.90	
11079.00	88.490	182.520	6412.75	4600.20	-4478.93	-1049.46	40°23'38.565"N	104°19'07.383"W	0.52	Last BHI Survey
11132.00	88.490	182.520	6414.15	4652.30	-4531.86	-1051.78	40°23'38.042"N	104°19'07.413"W	0.00	Projection to Bit

HOLE & CASING SECTIONS - Ref Wellbore: ANTELOPE A-E-15HNC AWB Ref Wellpath: ANTELOPE A-E-15HNC AWP

String/Diameter	Start MD [ft]	End MD [ft]	Interval [ft]	Start TVD [ft]	End TVD [ft]	Start N/S [ft]	Start E/W [ft]	End N/S [ft]	End E/W [ft]
13.5in Open Hole	17.00	442.00	425.00	17.00	441.98	0.00	0.00	0.57	-3.79
9.625in Casing Surface	17.00	442.00	425.00	17.00	441.98	0.00	0.00	0.57	-3.79
8.75in Open Hole	442.00	6934.00	6492.00	441.98	6414.07	0.57	-3.79	-336.75	-947.04
7in Casing Intermediate	17.00	6924.00	6907.00	17.00	6413.60	0.00	0.00	-326.77	-946.87
6.125in Open Hole	6934.00	11132.00	4198.00	6414.07	6414.15	-336.75	-947.04	-4531.86	-1051.78



Actual Wellpath Report

ANTELOPE A-E-15HNC AWP

Page 7 of 8



REFERENCE WELLPATH IDENTIFICATION

Operator	BONANZA CREEK OIL COMPANY	Slot	SLOT#02 ANTELOPE A-E-15HNC (321'FNL & 1091'FWL,SEC.15)
Area	COLORADO	Well	ANTELOPE A-E-15HNC
Field	WELD COUNTY	Wellbore	ANTELOPE A-E-15HNC AWB
Facility	SEC.15-T5N-R62W		

TARGETS

Name	MD [ft]	TVD [ft]	North [ft]	East [ft]	Grid East [US ft]	Grid North [US ft]	Latitude	Longitude	Shape
ANTELOPE A-E-15HNB SECTION 15		0.00	21.86	2.78	3330010.50	1393097.07	40°24'23.040"N	104°18'53.784"W	polygon
ANTELOPE A-E-15HNB HARDLINES 460' SETBACK FNL/FSL		6303.00	21.86	2.78	3330010.50	1393097.07	40°24'23.040"N	104°18'53.784"W	polygon
ANTELOPE A-E-15HNC BHL FROM PLAT REV-1 (470'FSL & 115'FWL,SEC.15)		6375.00	-4542.95	-1091.90	3328976.95	1388518.24	40°23'37.932"N	104°19'07.932"W	point
ANTELOPE A-E-15HNC BHL REV-2 (470'FSL & 165'FWL,SEC.15)		6375.00	-4542.95	-1041.90	3329026.95	1388518.90	40°23'37.932"N	104°19'07.286"W	point
ANTELOPE A-E-15HNC TARGET		6375.00	-222.21	-980.31	3329030.79	1392839.90	40°24'20.628"N	104°19'06.492"W	point
ANTELOPE A-E-15HNC BHL REV-3 (470'FSL & 165'FWL,SEC.15)		6412.00	-4542.95	-1041.90	3329026.95	1388518.90	40°23'37.932"N	104°19'07.286"W	point

WELLPATH COMPOSITION - Ref Wellbore: ANTELOPE A-E-15HNC AWB Ref Wellpath: ANTELOPE A-E-15HNC AWP

Start MD [ft]	End MD [ft]	Positional Uncertainty Model	Log Name/Comment	Wellbore
17.00	6894.00	NaviTrak (MagCorr)	BHI MWD NAVI (MAGCORR) 8 3/4" HOLE <17 - 6894>	ANTELOPE A-E-15HNC AWB
6894.00	11079.00	NaviTrak (MagCorr)	BHI MWD NAVI (MAGCORR) 6 1/8" HOLE <6894 - 11132>	ANTELOPE A-E-15HNC AWB
11079.00	11132.00	Blind Drilling (std)	Projection to bit	ANTELOPE A-E-15HNC AWB



Actual Wellpath Report
ANTELOPE A-E-15HNC AWP
Page 8 of 8



REFERENCE WELLPATH IDENTIFICATION			
Operator	BONANZA CREEK OIL COMPANY	Slot	SLOT#02 ANTELOPE A-E-15HNC (321'FNL & 1091'FWL,SEC.15)
Area	COLORADO	Well	ANTELOPE A-E-15HNC
Field	WELD COUNTY	Wellbore	ANTELOPE A-E-15HNC AWB
Facility	SEC.15-T5N-R62W		

WELLPATH COMMENTS				
MD [ft]	Inclination [°]	Azimuth [°]	TVD [ft]	Comment
511.00	1.200	278.610	510.96	Tie on Point
11079.00	88.490	182.520	6412.75	Last BHI Survey
11132.00	88.490	182.520	6414.15	Projection to Bit