

WPX ENERGY ROCKY MOUNTAIN LLC-EBUS

PA 34-6

**Aztec 1000**

## **Post Job Summary**

# **Cement Surface Casing**

Date Prepared: 07/15/2014

Job Date: 07/13/2014

Submitted by: Aaron Katz– Grand Junction Cement Engineer

The Road to Excellence Starts with Safety

Sold To #: 300721	Ship To #: 3476006	Quote #:	Sales Order #: 0901501563
Customer: WPX ENERGY ROCKY MOUNTAIN LLC-EBUS		Customer Rep: BRANDON HAIRE	
Well Name: HICKS PA	Well #: 34-6	API/UWI #: 05-045-22410-00	
Field: PARACHUTE	City (SAP): PARACHUTE	County/Parish: GARFIELD	State: COLORADO
Legal Description: SE SW-6-7S-95W-793FSL-2224FWL			
Contractor:		Rig/Platform Name/Num: Aztec 1000	
Job BOM: 7521			
Well Type: DIRECTIONAL GAS			
Sales Person: HALAMERICA\HB50180		Srcv Supervisor: Eric Carter	
<b>Job</b>			

Formation Name			
Formation Depth (MD)	Top	0	Bottom 1310 FT.
Form Type	BHST		
Job depth MD	1310ft		
Water Depth	Wk Ht Above Floor 5 FT.		
Perforation Depth (MD)	From		To

### Well Data

Description	New / Used	Size in	ID in	Weight lbm/ft	Thread	Grade	Top MD ft	Bottom MD ft	Top TVD ft	Bottom TVD ft
Open Hole Section			13.5				0	1310		0
Casing		9.625	9.001	32.3	8 RD	H-40	0	1310	0	0

### Tools and Accessories

Type	Size in	Qty	Make	Depth ft	Type	Size in	Qty	Make
Guide Shoe					Top Plug	9.625	1	HES
Float Shoe					Bottom Plug			
Float Collar					SSR plug set			
Insert Float					Plug Container	9.625	1	HES
Stage Tool					Centralizers			

### Miscellaneous Materials

Gelling Agt	Conc	Surfactant	Conc	Acid Type	Qty	Conc
Treatment Fld	Conc	Inhibitor	Conc	Sand Type	Size	Qty

### Fluid Data

Fluid #	Stage Type	Fluid Name	Qty	Qty UoM	Mixing Density lbm/gal	Yield ft <sup>3</sup> /sack	Mix Fluid Gal	Rate bbl/min	Total Mix Fluid Gal
Stage/Plug #: 1									
1	Fresh Water	Fresh Water	50	bbl	8.34			5	
Stage/Plug #: 2									
2	Lead Cement	VARICEM (TM) CEMENT	180	sack	12.3	2.38	13.75	7	
94 lbm		TYPE I / II CEMENT, BULK (101439798)							

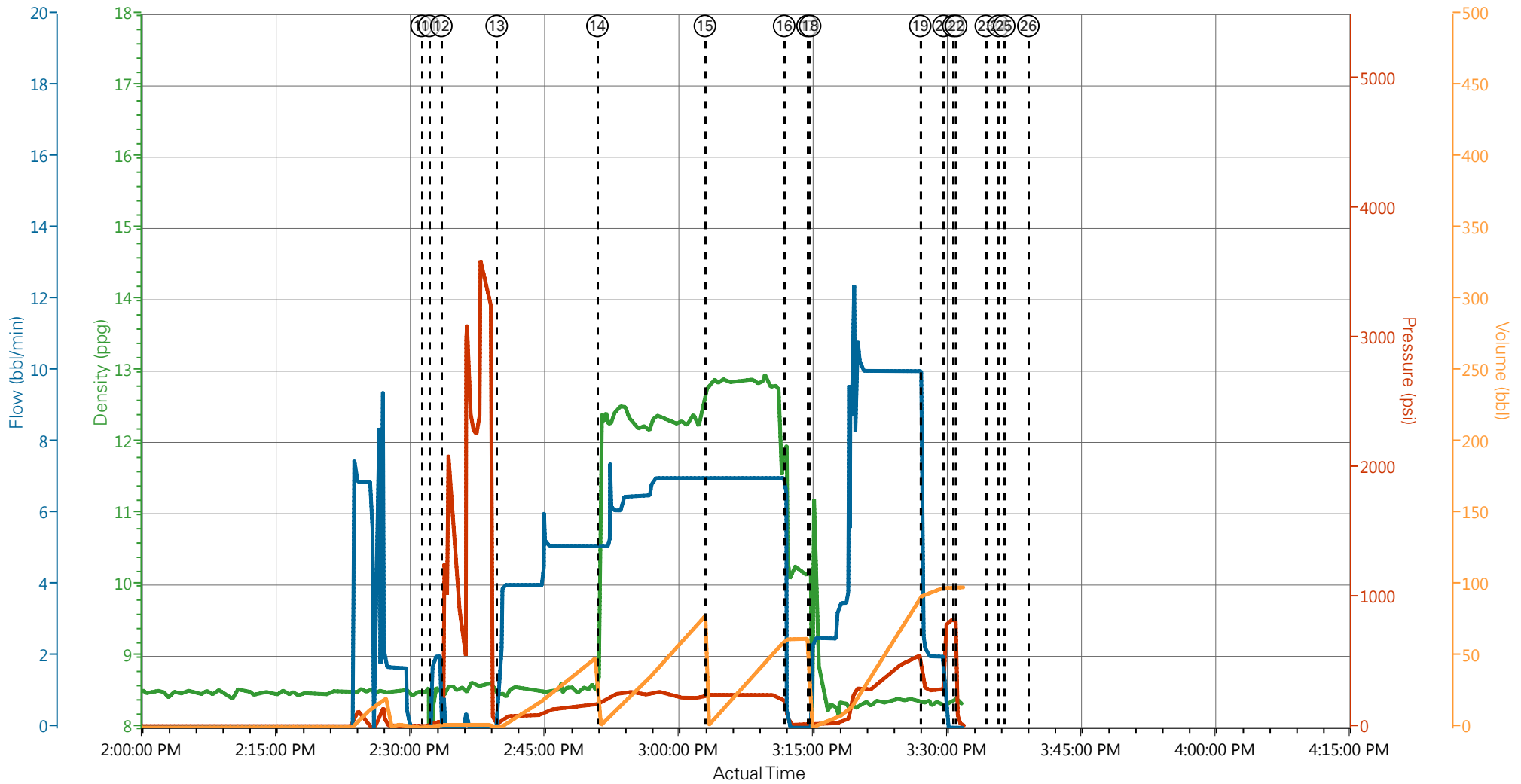
Fluid #	Stage Type	Fluid Name	Qty	Qty UoM	Mixing Density lbm/gal	Yield ft3/sack	Mix Fluid Gal	Rate bbl/mi n	Total Mix Fluid Gal
3	Tail Cement	VARICEM (TM) CEMENT	165	sack	12.8	2.11	11.75	7	
11.77 Gal		FRESH WATER							
Fluid #	Stage Type	Fluid Name	Qty	Qty UoM	Mixing Density lbm/gal	Yield ft3/sack	Mix Fluid Gal	Rate bbl/mi n	Total Mix Fluid Gal
4	Displacement	Displacement	99.6	bbl	8.34			10	
<b>Cement Left In Pipe</b>		<b>Amount</b>	45 ft		<b>Reason</b>			Shoe Joint	
<b>Comment</b>									

### 3.5 Job Event Log

Type	Seq. No.	Graph Label	Date	Time	Source	DH Density (ppg)	PS Pump Press (psi)	Comb Pump Rate (bbl/min)	Pump Stg Tot (bbl)	Comment
Event	1	Call Out	7/13/2014	06:00:00	USER					
Event	2	Depart Yard Safety Meeting	7/13/2014	08:50:00	USER					ATTENDED BY ALL HES CREW
Event	3	Crew Leave Yard	7/13/2014	09:00:00	USER					
Event	4	Arrive at Location from Other Job or Site	7/13/2014	10:30:00	USER					RIG RUNNING CASING
Event	5	Assessment Of Location Safety Meeting	7/13/2014	12:20	USER					ATTENDED BY ALL HES CREW
Event	6	Other	7/13/2014	12:30	USER					
Event	7	Pre-Rig Up Safety Meeting	7/13/2014	12:50	USER					ATTENDED BY ALL HES CREW
Event	8	Rig-Up Equipment	7/13/2014	13:00	USER					
Event	9	Pre-Job Safety Meeting	7/13/2014	14:00	USER					ATTENDED BY ALL HES CREW, RIG CREW AND COMPANY REP
Event	10	Start Job	7/13/2014	14:31:40	COM5					TP 1310', TD 1310', MW 10.4 PPG, CASING 9.625", 32.3#, H-40, SJ 45', HOLE 13.5"
Event	11	Other	7/13/2014	14:32:31	USER	8.34	40	2	2	FILL LINES
Event	12	Test Lines	7/13/2014	14:33:52	USER					PRESSURED UP TO 3200 PSI, NO SIGN OF LEAKS
Event	13	Pump Spacer	7/13/2014	14:40:03	USER	8.34	180	5	50	FRESH WATER
Event	14	Pump Lead Cement	7/13/2014	14:51:19	USER	12.3	260	7	76.3	180 SKS VARICEM MIXED AT 12.3 PPG, 2.38 YIELD 13.75 GL/SK
Event	15	Pump Tail Cement	7/13/2014	15:03:19	USER	12.8	250	7	62	165 SKS VARICEM MIXED AT 12.8 PPG, 2.11 YIELD, 11.75 GL/SK

Event	16	Shutdown	7/13/2014	15:12:1 1	USER					
Event	17	Drop Top Plug	7/13/2014	15:14:4 7	USER					PLUG LAUNCHED
Event	18	Pump Displacement	7/13/2014	15:15:0 5	USER	8.34	560	10	89.6	FRESH WATER
Event	19	Slow Rate	7/13/2014	15:27:2 3	USER	8.34	290	2	10	
Event	20	Bump Plug	7/13/2014	15:29:5 9	USER		830			PLUG LANDED
Event	21	Check Floats	7/13/2014	15:31:0 5	USER					FLOATS HELD
Event	22	End Job	7/13/2014	15:31:2 4	USER					GOOD RETURNS THROUGH OUT JOB, PIPE NOT MOVED DURING JOB, 20 BBLS CEMENT TO SURFACE
Event	23	Post-Job Safety Meeting (Pre Rig-Down)	7/13/2014	15:35	USER					ATTENDED BY ALL HES CREW
Event	24	Rig-Down Equipment	7/13/2014	15:40	USER					
Event	25	Depart Location Safety Meeting	7/13/2014	16:20	USER					ATTENDED BY ALL HES CREW
Event	26	Crew Leave Location	7/13/2014	16:30	USER					THANK YOU FOR USING HALLIBURTON CEMENT, ERIC CARTER AND CREW.

# WPX - HICKS PA 34-6 - SURFACE



DH Density (ppg)    PS Pump Press (psi)    Comb Pump Rate (bbl/min)    Pump Stg Tot (bbl)

- |   |   |  |                                      |   |
|---|---|--|--------------------------------------|---|
| ① Call Out n/a;n/a;n/a;n/a                                  | ⑤ Assessment Of Location Safety Meeting n/a;n/a;n/a;n/a | ⑨ Pre-Job Safety Meeting n/a;n/a;n/a;n/a | ⑬ Pump Spacer 8.49;36;1.9;0.3        | ⑰ |
| ② Depart Yard Safety Meeting n/a;n/a;n/a;n/a                | ⑥ Other n/a;n/a;n/a;n/a                                 | ⑩ Start Job 8.55;13;0;0                  | ⑭ Pump Lead Cement 12.21;209;5.1;1.9 | ⑱ |
| ③ Crew Leave Yard n/a;n/a;n/a;n/a                           | ⑦ Pre-Rig Up Safety Meeting n/a;n/a;n/a;n/a             | ⑪ Other 8.23;16;2;0.2                    | ⑮ Pump Tail Cement 12.8;252;7;1.7    | ⑳ |
| ④ Arrive at Location from Other Job or Site n/a;n/a;n/a;n/a | ⑧ Rig-Up Equipment n/a;n/a;n/a;n/a                      | ⑫ Test Lines 8.57;1183;0;2               | ⑯ Shutdown 10.22;79;0;62.3           | ㉑ |



**HALLIBURTON** | iCem<sup>®</sup> Service

Created: 2014-07-13 10:55:08, Version: 3.0.121

Edit

Customer : WPX ENERGY ROCKY MOUNTAIN LLC-EBUS

Job Date : 7/13/2014 1:22:23 PM

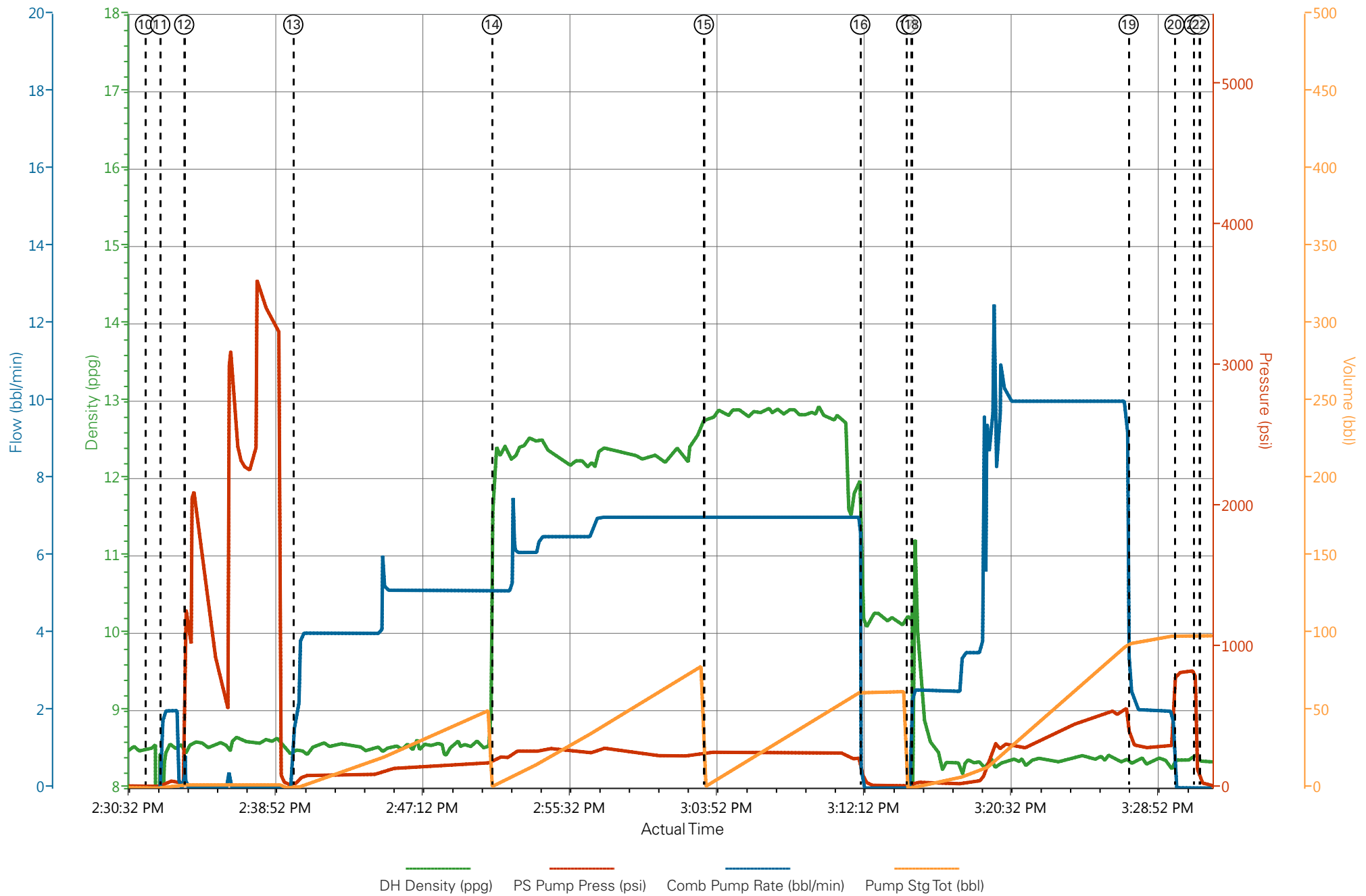
Well : HICKS PA 34-6

Representative : BRANDON HAIRE

Sales Order # : 901501563

ERIC CARTER : ANDREW SCHANZ/ELITE 6

# WPX - HICKS PA 34-6 - SURFACE



— DH Density (ppg)   
 — PS Pump Press (psi)   
 — Comb Pump Rate (bbl/min)   
 — Pump Stg Tot (bbl)

# HALLIBURTON

---

## Water Analysis Report

Company:	<u>WPX</u>	Date:	<u>7/15/2014</u>
Submitted by:	<u>ERIC CARTER</u>	Date Rec.:	<u>7/15/2014</u>
Attention:	<u>J.Trout</u>	S.O.#	<u>901501563</u>
Lease	<u>AZTEC 1000</u>	Job Type:	<u>SURFACE</u>
Well #	<u>HICKS PA 34-6</u>		

Specific Gravity	<i>MAX</i>	<b>1</b>
pH	<i>8</i>	<b>7</b>
Potassium (K)	<i>5000</i>	<b>1000</b> Mg / L
Hrdness	<i>500</i>	<b>250</b> Mg / L
Iron (FE2)	<i>300</i>	<b>10</b> Mg / L
Chlorides (Cl)	<i>3000</i>	<b>500</b> Mg / L
Sulfates (SO <sub>4</sub> )	<i>1500</i>	<b>&lt;200</b> Mg / L
Temp	<i>40-80</i>	<b>60</b> Deg
Total Dissolved Solids		<b>OR</b> Mg / L

Respectfully: ERIC CARTER

Title: CEMENTING SUPERVISOR

Location: Grand Junction, CO

<b>Sales Order #:</b> 0901501563	<b>Line Item:</b> 10	<b>Survey Conducted Date:</b> 7/13/2014
<b>Customer:</b> WPX ENERGY ROCKY MOUNTAIN LLC-EBUS		<b>Job Type (BOM):</b> CMT SURFACE CASING BOM
<b>Customer Representative:</b>		<b>API / UWI: (leave blank if unknown)</b> 05-045-22410-00
<b>Well Name:</b> HICKS PA		<b>Well Number:</b> 0080606511
<b>Well Type:</b> DIRECTIONAL GAS	<b>Well Country:</b> USA	
<b>H2S Present:</b> No	<b>Well State:</b> COLORADO	<b>Well County:</b> GARFIELD

Dear Customer,

We hope that you were satisfied with the service quality of this job performed by Halliburton. It is the aim of our management and service personnel to deliver equipment and service of a standard unmatched in the service sector of the energy industry.

Please take the time to let us know if our performance met with your satisfaction. Please be as critical as possible to ensure we constantly improve our service. Your comments are of great value to us and are intended for the exclusive use of Halliburton.

### CUSTOMER SATISFACTION SURVEY

CATEGORY	CUSTOMER SATISFACTION RESPONSE	
Survey Conducted Date	The date the survey was conducted	7/13/2014
Survey Interviewer	The survey interviewer is the person who initiated the survey.	HX15491
Customer Participation	Did the customer participate in this survey? (Y/N)	No
Customer Representative	Enter the Customer representative name	
HSE	Was our HSE performance satisfactory? Circle Y or N	
Equipment	Were you satisfied with our Equipment? Circle Y or N	
Personnel	Were you satisfied with our people? Circle Y or N	
Customer Comment	Customer's Comment	

<b>CUSTOMER SIGNATURE</b>
---------------------------

<b>Sales Order #:</b> 0901501563	<b>Line Item:</b> 10	<b>Survey Conducted Date:</b> 7/13/2014
<b>Customer:</b> WPX ENERGY ROCKY MOUNTAIN LLC-EBUS		<b>Job Type (BOM):</b> CMT SURFACE CASING BOM
<b>Customer Representative:</b>		<b>API / UWI: (leave blank if unknown)</b> 05-045-22410-00
<b>Well Name:</b> HICKS PA		<b>Well Number:</b> 0080606511
<b>Well Type:</b> DIRECTIONAL GAS	<b>Well Country:</b> USA	
<b>H2S Present:</b> No	<b>Well State:</b> COLORADO	<b>Well County:</b> GARFIELD

### KEY PERFORMANCE INDICATORS

General	
<b>Survey Conducted Date</b>	7/13/2014
The date the survey was conducted	

Cementing KPI Survey	
<b>Type of Job</b>	0
Select the type of job. (Cementing or Non-Cementing)	
<b>Select the Maximum Deviation range for this Job</b>	Vertical
What is the highest deviation for the job you just completed? This may not be the maximum well deviation.	
<b>Total Operating Time (hours)</b>	4
Total Operating Hours Including Rig-up, Pumping, Rig-down. Enter in decimal format.	
<b>HSE Incident, Accident, Injury</b>	No
HSE Incident, Accident, Injury. This should be recordable incidents only.	
<b>Was the job purpose achieved?</b>	Yes
Was the job delivered correctly as per customer agreed design?	
<b>Operating Hours (Pumping Hours)</b>	1
Total number of hours pumping fluid on this job. Enter in decimal format.	
<b>Customer Non-Productive Rig Time (hrs)</b>	0.5
Lost time due to Halliburton in the start, execution, or completion of an ordered service or product, or delays in a follow-on service. Enter in decimal format. 0 if none.	
<b>Reason For Non-Productive Rig Time</b>	CEMENT BULID UP IN WATER THROTTLING VALVE. HES CLEANED OUT THEN BEGAN TO PUMP
Reason For Non-productive Rig Time (Cementing PSL Responsibility)	
<b>Type of Rig Classification Job Was Performed</b>	Drilling Rig (Portable)
Type Of Rig (classification) Job Was Performed On	
<b>Number Of JSAs Performed</b>	5
Number Of Jsas Performed	

<b>Sales Order #:</b> 0901501563	<b>Line Item:</b> 10	<b>Survey Conducted Date:</b> 7/13/2014
<b>Customer:</b> WPX ENERGY ROCKY MOUNTAIN LLC-EBUS		<b>Job Type (BOM):</b> CMT SURFACE CASING BOM
<b>Customer Representative:</b>		<b>API / UWI: (leave blank if unknown)</b> 05-045-22410-00
<b>Well Name:</b> HICKS PA		<b>Well Number:</b> 0080606511
<b>Well Type:</b> DIRECTIONAL GAS	<b>Well Country:</b> USA	
<b>H2S Present:</b> No	<b>Well State:</b> COLORADO	<b>Well County:</b> GARFIELD

<b>Number of Unplanned Shutdowns</b> Unplanned shutdown is when injection stops for any period of time.	0
<b>Was this a Primary Cement Job (Yes / No)</b> Primary Cement Job= Casing job, Liner job, or Tie-back job.	Yes
<b>Did We Run Wiper Plugs?</b> Did We Run Top And Bottom Casing Wiper Plugs?	Top
<b>Mixing Density of Job Stayed in Designed Density Range (0-100%)</b> Density Range defined as +/- .20 ppg. Calculation: Total BBLs cement mixed at designed density divided by total BBLs of cement multiplied by 100	97
<b>Was Automated Density Control Used?</b> Was Automated Density Control (ADC) Used ?	Yes
<b>Pump Rate (percent) of Job Stayed At Designed Pump Rate</b> Pump Rate range defined as +/- 1bbl/min. Calculation: Total BBLs of fluid pumped at the designed rate divided by Total BBLs of fluid pumped, multiplied by 100	97
<b>Nbr of Remedial Sqz Jobs Rqd - Competition</b> Number Of Remedial Squeeze Jobs Required After Primary Job Performed By Competition	0
<b>Nbr of Remedial Plug Jobs Rqd - HES</b> Number Of Remedial Plug Jobs Needed After Primary Plug Pumped By HES	0
<b>Nbr of Remedial Sqz Jobs Rqd - HES</b> Number Of Remedial Squeeze Jobs Required After Primary Job Performed By HES	0