

# BONANZA CREEK OIL COMPANY

Location: COLORADO Slot: SLOT#05 ANTELOPE 11-14-15HNB (382'FNL & 1093'FWL,SEC.15)  
Field: WELD COUNTY Well: ANTELOPE 11-14-15HNB  
Facility: SEC.15-T5N-R62W Wellbore: ANTELOPE 11-14-15HNB PWB

## Location Information

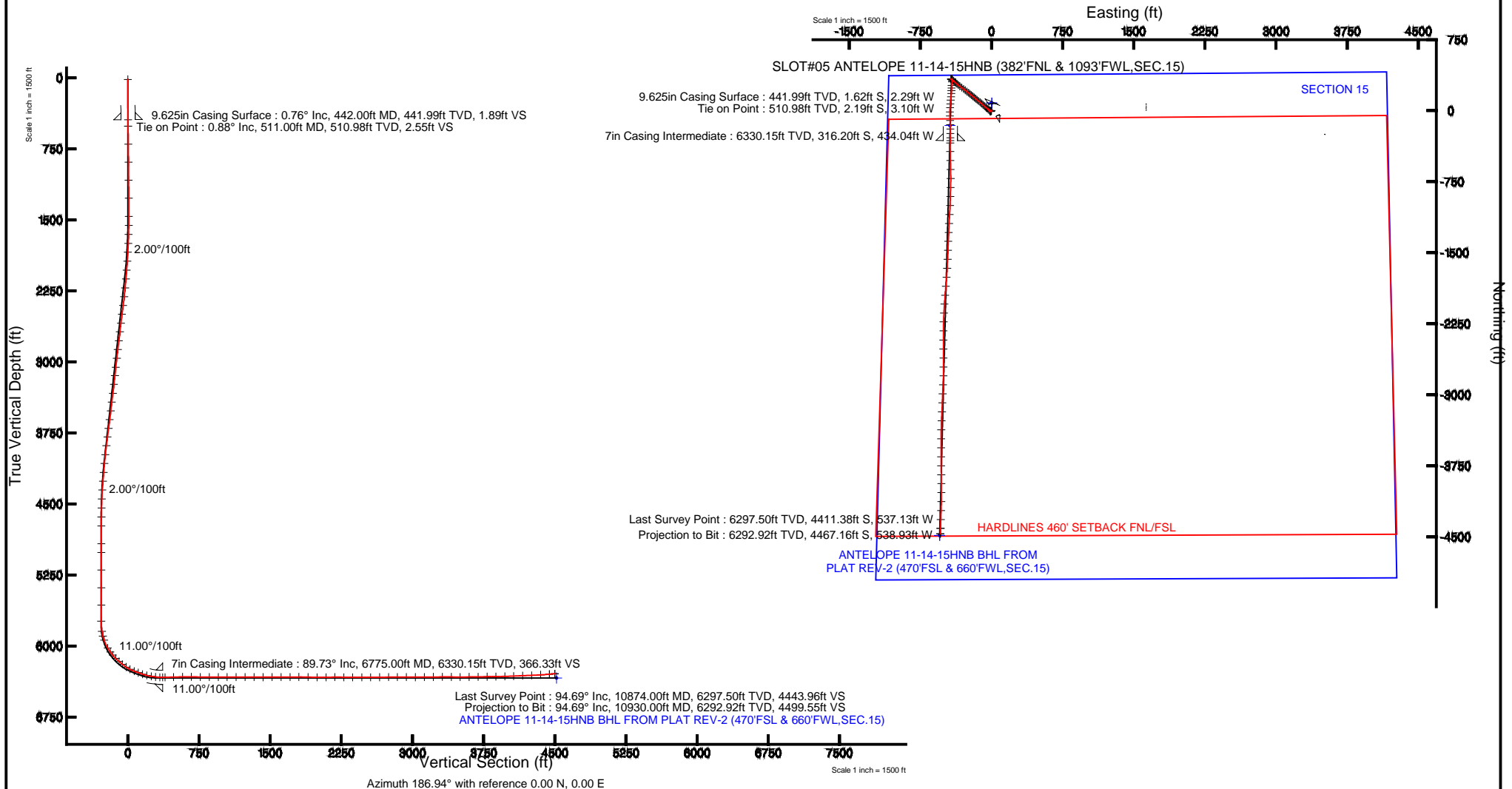
Facility Name				Grid East (US ft)	Grid North (US ft)	Latitude	Longitude
SEC.15-T5N-R62W				3330010.500	1393097.073	40°24'23.040"N	104°18'53.784"W
Slot	Local N (ft)	Local E (ft)	Grid East (US ft)	Grid North (US ft)	Latitude	Longitude	
SLOT#05 ANTELOPE 11-14-15HNB (382'FNL & 1093'FWL,SEC.15)	-80.15	-2.78	3330008.787	1393016.897	40°24'22.248"N	104°18'53.820"W	
RIG (RKB) to Mud line (At Slot: SLOT#05 ANTELOPE 11-14-15HNB (382'FNL & 1093'FWL,SEC.15))						4715ft	
Mean Sea Level to Mud line (At Slot: SLOT#05 ANTELOPE 11-14-15HNB (382'FNL & 1093'FWL,SEC.15))						0ft	
RIG (RKB) to Mean Sea Level						4715ft	

Plot reference wellpath is ANTELOPE 11-14-15HNB (REV-C.0) PWP	Grid System: NAD83 / Lambert Colorado SP, Northern Zone (501), US feet
True vertical depths are referenced to RIG (RKB)	North Reference: True north
Measured depths are referenced to RIG (RKB)	Scale: True distance
RIG (RKB) to Mean Sea Level: 4715 feet	Depths are in feet
Mean Sea Level to Mud line (At Slot: SLOT#05 ANTELOPE 11-14-15HNB (382'FNL & 1093'FWL,SEC.15)): 0 feet	Created by: guenaler on 11/1/2014
Coordinates are in feet referenced to Slot	



BGGM (1945.0 to 2016.0) Dip: 67.01° Field: 52735.5 nT  
Magnetic North is 8.27 degrees East of True North (at 9/9/2014)

To correct azimuth from Magnetic to True add 8.27 degrees





# Actual Wellpath Report

ANTELOPE 11-14-15HNB AWP

Page 1 of 7



## REFERENCE WELLPATH IDENTIFICATION

Operator	BONANZA CREEK OIL COMPANY	Slot	SLOT#05 ANTELOPE 11-14-15HNB (382'FNL & 1093'FWL,SEC.15)
Area	COLORADO	Well	ANTELOPE 11-14-15HNB
Field	WELD COUNTY	Wellbore	ANTELOPE 11-14-15HNB AWB
Facility	SEC.15-T5N-R62W		

## REPORT SETUP INFORMATION

Projection System	NAD83 / Lambert Colorado SP, Northern Zone (501), US feet	Software System	WellArchitect® 4.0.0
North Reference	True	User	Guenaler
Scale	0.999961	Report Generated	11/1/2014 at 3:05:06 PM
Convergence at slot	n/a	Database/Source file	WA_Denver/ANTELOPE_11-14-15HNB_AWB.xml

## WELLPATH LOCATION

	Local coordinates		Grid coordinates		Geographic coordinates	
	North[ft]	East[ft]	Easting[US ft]	Northing[US ft]	Latitude	Longitude
Slot Location	-80.15	-2.78	3330008.79	1393016.90	40°24'22.248"N	104°18'53.820"W
Facility Reference Pt			3330010.50	1393097.07	40°24'23.040"N	104°18'53.784"W
Field Reference Pt			3335925.10	1457282.25	40°34'56.460"N	104°17'26.016"W

## WELLPATH DATUM

Calculation method	Minimum curvature	RIG (RKB) to Facility Vertical Datum	4715.00ft
Horizontal Reference Pt	Slot	RIG (RKB) to Mean Sea Level	4715.00ft
Vertical Reference Pt	RIG (RKB)	RIG (RKB) to Mud Line at Slot (SLOT#05 ANTELOPE 11-14-15HNB (382'FNL & 1093'FWL,SEC.15))	4715.00ft
MD Reference Pt	RIG (RKB)	Section Origin	N 0.00, E 0.00 ft
Field Vertical Reference	Mean Sea Level	Section Azimuth	186.94°



# Actual Wellpath Report

ANTELOPE 11-14-15HNB AWP

Page 2 of 7



REFERENCE WELLPATH IDENTIFICATION			
Operator	BONANZA CREEK OIL COMPANY	Slot	SLOT#05 ANTELOPE 11-14-15HNB (382'FNL & 1093'FWL,SEC.15)
Area	COLORADO	Well	ANTELOPE 11-14-15HNB
Field	WELD COUNTY	Wellbore	ANTELOPE 11-14-15HNB AWB
Facility	SEC.15-T5N-R62W		

## WELLPATH DATA (112 stations) † = interpolated/extrapolated station

MD [ft]	Inclination [°]	Azimuth [°]	TVD [ft]	Vert Sect [ft]	North [ft]	East [ft]	Latitude	Longitude	DLS [°/100ft]	Comments
0.00†	0.000	234.680	0.00	0.00	0.00	0.00	40°24'22.248"N	104°18'53.820"W	0.00	
17.00	0.000	234.680	17.00	0.00	0.00	0.00	40°24'22.248"N	104°18'53.820"W	0.00	
511.00	0.880	234.680	510.98	2.55	-2.19	-3.10	40°24'22.226"N	104°18'53.860"W	0.18	Tie on Point
702.00	0.840	224.030	701.96	4.65	-4.05	-5.27	40°24'22.208"N	104°18'53.888"W	0.09	
892.00	0.720	230.320	891.94	6.63	-5.81	-7.15	40°24'22.191"N	104°18'53.912"W	0.08	
1082.00	0.570	240.440	1081.93	8.06	-7.04	-8.89	40°24'22.178"N	104°18'53.935"W	0.10	
1272.00	0.460	235.040	1271.92	9.13	-7.94	-10.34	40°24'22.170"N	104°18'53.954"W	0.06	
1463.00	0.340	296.110	1462.92	9.46	-8.13	-11.48	40°24'22.168"N	104°18'53.968"W	0.22	
1558.00	0.970	319.760	1557.91	8.82	-7.40	-12.25	40°24'22.175"N	104°18'53.978"W	0.71	
1654.00	2.070	315.740	1653.88	7.18	-5.53	-13.98	40°24'22.193"N	104°18'54.001"W	1.15	
1748.00	3.530	321.290	1747.76	4.10	-2.06	-16.98	40°24'22.228"N	104°18'54.039"W	1.58	
1842.00	5.060	313.530	1841.50	-0.40	3.05	-21.79	40°24'22.278"N	104°18'54.102"W	1.74	
1936.00	5.960	315.150	1935.06	-5.89	9.37	-28.24	40°24'22.341"N	104°18'54.185"W	0.97	
2032.00	7.560	313.940	2030.39	-12.77	17.29	-36.31	40°24'22.419"N	104°18'54.289"W	1.67	
2127.00	9.310	307.900	2124.36	-20.49	26.34	-46.87	40°24'22.508"N	104°18'54.426"W	2.06	
2222.00	10.500	307.960	2217.94	-28.90	36.39	-59.76	40°24'22.608"N	104°18'54.592"W	1.25	
2317.00	11.450	313.300	2311.21	-38.95	48.18	-73.45	40°24'22.724"N	104°18'54.769"W	1.46	
2413.00	12.980	311.340	2405.03	-50.69	61.84	-88.48	40°24'22.859"N	104°18'54.964"W	1.65	
2508.00	12.160	310.550	2497.75	-62.26	75.39	-104.09	40°24'22.993"N	104°18'55.166"W	0.88	
2603.00	12.610	309.040	2590.54	-73.31	88.43	-119.75	40°24'23.122"N	104°18'55.368"W	0.58	
2697.00	11.720	309.700	2682.43	-83.93	100.99	-135.06	40°24'23.246"N	104°18'55.566"W	0.96	
2793.00	12.710	309.780	2776.26	-94.93	113.97	-150.68	40°24'23.374"N	104°18'55.768"W	1.03	
2888.00	12.200	310.460	2869.02	-106.14	127.17	-166.35	40°24'23.505"N	104°18'55.970"W	0.56	
2983.00	11.250	309.670	2962.04	-116.69	139.60	-181.12	40°24'23.628"N	104°18'56.161"W	1.01	
3079.00	11.240	310.450	3056.19	-126.92	151.65	-195.45	40°24'23.747"N	104°18'56.346"W	0.16	
3170.00	12.380	306.160	3145.27	-136.58	163.16	-210.07	40°24'23.860"N	104°18'56.536"W	1.58	
3265.00	12.940	309.540	3237.96	-147.28	175.94	-226.50	40°24'23.987"N	104°18'56.748"W	0.98	
3360.00	11.770	309.980	3330.76	-158.30	188.94	-242.13	40°24'24.115"N	104°18'56.950"W	1.24	
3455.00	13.260	308.160	3423.50	-169.23	201.90	-258.12	40°24'24.243"N	104°18'57.157"W	1.62	
3550.00	13.500	307.200	3515.92	-180.46	215.33	-275.52	40°24'24.376"N	104°18'57.382"W	0.34	



# Actual Wellpath Report

## ANTELOPE 11-14-15HNB AWP

Page 3 of 7



### REFERENCE WELLPATH IDENTIFICATION

Operator	BONANZA CREEK OIL COMPANY	Slot	SLOT#05 ANTELOPE 11-14-15HNB (382'FNL & 1093'FWL,SEC.15)
Area	COLORADO	Well	ANTELOPE 11-14-15HNB
Field	WELD COUNTY	Wellbore	ANTELOPE 11-14-15HNB AWP
Facility	SEC.15-T5N-R62W		

### WELLPATH DATA (112 stations)

MD [ft]	Inclination [°]	Azimuth [°]	TVD [ft]	Vert Sect [ft]	North [ft]	East [ft]	Latitude	Longitude	DLS [°/100ft]	Comments
3646.00	14.430	306.100	3609.08	-191.94	229.16	-294.11	40°24'24.512"N	104°18'57.622"W	1.01	
3741.00	15.200	306.270	3700.92	-203.80	243.50	-313.71	40°24'24.654"N	104°18'57.875"W	0.81	
3836.00	13.830	306.780	3792.89	-215.55	257.67	-332.85	40°24'24.794"N	104°18'58.123"W	1.45	
3931.00	11.850	309.580	3885.51	-226.47	270.68	-349.46	40°24'24.923"N	104°18'58.337"W	2.18	
4026.00	11.160	310.850	3978.60	-236.86	282.91	-363.94	40°24'25.044"N	104°18'58.525"W	0.77	
4121.00	9.880	311.730	4072.00	-246.64	294.35	-376.97	40°24'25.157"N	104°18'58.693"W	1.36	
4217.00	8.570	309.430	4166.76	-255.18	304.37	-388.65	40°24'25.256"N	104°18'58.844"W	1.42	
4311.00	8.100	310.270	4259.76	-262.58	313.10	-399.11	40°24'25.342"N	104°18'58.979"W	0.52	
4405.00	7.640	308.090	4352.88	-269.45	321.24	-409.08	40°24'25.422"N	104°18'59.108"W	0.58	
4501.00	4.520	298.650	4448.33	-274.15	326.99	-417.42	40°24'25.479"N	104°18'59.216"W	3.40	
4595.00	2.790	309.790	4542.14	-276.76	330.23	-422.43	40°24'25.511"N	104°18'59.281"W	1.98	
4690.00	1.240	312.060	4637.07	-278.61	332.40	-424.97	40°24'25.533"N	104°18'59.314"W	1.63	
4785.00	0.380	24.950	4732.07	-279.50	333.37	-425.60	40°24'25.542"N	104°18'59.322"W	1.25	
4972.00	0.480	115.550	4919.06	-279.84	333.60	-424.63	40°24'25.544"N	104°18'59.309"W	0.33	
5066.00	0.460	101.180	5013.06	-279.68	333.35	-423.91	40°24'25.542"N	104°18'59.300"W	0.13	
5251.00	0.980	101.020	5198.04	-279.52	332.91	-421.63	40°24'25.538"N	104°18'59.270"W	0.28	
5437.00	0.820	90.740	5384.02	-279.55	332.59	-418.74	40°24'25.534"N	104°18'59.233"W	0.12	
5620.00	0.680	70.460	5567.00	-280.17	332.93	-416.40	40°24'25.538"N	104°18'59.203"W	0.16	
5791.00	0.340	36.890	5738.00	-281.06	333.68	-415.14	40°24'25.545"N	104°18'59.186"W	0.26	
5900.00	8.270	179.160	5846.63	-273.56	326.08	-414.83	40°24'25.470"N	104°18'59.182"W	7.84	
5949.00	15.500	180.860	5894.55	-263.55	316.00	-414.88	40°24'25.371"N	104°18'59.183"W	14.77	
5994.00	18.950	186.660	5937.53	-250.26	302.73	-415.82	40°24'25.239"N	104°18'59.195"W	8.56	
6085.00	29.700	184.240	6020.33	-212.85	265.46	-419.21	40°24'24.871"N	104°18'59.239"W	11.86	
6136.00	36.040	183.030	6063.14	-185.24	237.85	-420.94	40°24'24.598"N	104°18'59.261"W	12.50	
6177.00	40.490	181.430	6095.33	-159.94	212.48	-421.91	40°24'24.348"N	104°18'59.274"W	11.12	
6224.00	44.680	183.010	6129.93	-128.25	180.71	-423.16	40°24'24.034"N	104°18'59.290"W	9.20	
6272.00	48.390	185.300	6162.94	-93.46	145.98	-425.70	40°24'23.690"N	104°18'59.323"W	8.47	
6319.00	51.890	186.530	6193.06	-57.40	110.10	-429.43	40°24'23.336"N	104°18'59.371"W	7.71	
6368.00	55.600	184.220	6222.04	-17.91	70.77	-433.11	40°24'22.947"N	104°18'59.419"W	8.47	
6415.00	62.700	184.070	6246.12	22.36	30.55	-436.02	40°24'22.550"N	104°18'59.456"W	15.11	



# Actual Wellpath Report

ANTELOPE 11-14-15HNB AWP

Page 4 of 7



REFERENCE WELLPATH IDENTIFICATION			
Operator	BONANZA CREEK OIL COMPANY	Slot	SLOT#05 ANTELOPE 11-14-15HNB (382'FNL & 1093'FWL,SEC.15)
Area	COLORADO	Well	ANTELOPE 11-14-15HNB
Field	WELD COUNTY	Wellbore	ANTELOPE 11-14-15HNB AWB
Facility	SEC.15-T5N-R62W		

WELLPATH DATA (112 stations)										
MD [ft]	Inclination [°]	Azimuth [°]	TVD [ft]	Vert Sect [ft]	North [ft]	East [ft]	Latitude	Longitude	DLS [°/100ft]	Comments
6463.00	69.360	180.590	6265.62	66.05	-13.24	-437.77	40°24'22.117"N	104°18'59.479"W	15.37	
6510.00	70.820	179.140	6281.62	109.90	-57.43	-437.66	40°24'21.680"N	104°18'59.477"W	4.25	
6558.00	71.220	177.930	6297.23	154.80	-102.80	-436.50	40°24'21.232"N	104°18'59.462"W	2.53	
6605.00	75.960	177.570	6310.51	199.29	-147.84	-434.73	40°24'20.787"N	104°18'59.440"W	10.11	
6653.00	79.860	179.970	6320.56	245.74	-194.75	-433.73	40°24'20.323"N	104°18'59.427"W	9.48	
6700.00	84.310	180.000	6327.03	291.94	-241.29	-433.72	40°24'19.864"N	104°18'59.426"W	9.47	
6745.00	88.760	180.290	6329.75	336.53	-286.20	-433.83	40°24'19.420"N	104°18'59.428"W	9.91	
6800.00	90.540	180.680	6330.09	391.18	-341.19	-434.30	40°24'18.876"N	104°18'59.434"W	3.31	
6891.00	91.670	179.380	6328.33	481.49	-432.17	-434.35	40°24'17.977"N	104°18'59.434"W	1.89	
6986.00	90.650	178.190	6326.41	575.51	-527.13	-432.33	40°24'17.039"N	104°18'59.408"W	1.65	
7081.00	89.880	179.140	6325.97	669.52	-622.10	-430.12	40°24'16.101"N	104°18'59.380"W	1.29	
7176.00	88.430	179.830	6327.37	763.70	-717.08	-429.26	40°24'15.162"N	104°18'59.369"W	1.69	
7271.00	89.780	181.950	6328.85	858.15	-812.05	-430.74	40°24'14.224"N	104°18'59.388"W	2.65	
7366.00	90.650	181.290	6328.50	952.74	-907.01	-433.43	40°24'13.285"N	104°18'59.422"W	1.15	
7460.00	90.340	182.470	6327.69	1046.37	-1000.96	-436.51	40°24'12.357"N	104°18'59.462"W	1.30	
7555.00	89.430	183.790	6327.88	1141.16	-1095.81	-441.70	40°24'11.420"N	104°18'59.529"W	1.69	
7650.00	90.680	182.250	6327.79	1235.93	-1190.68	-446.70	40°24'10.482"N	104°18'59.594"W	2.09	
7745.00	88.950	182.650	6328.09	1330.63	-1285.58	-450.76	40°24'09.544"N	104°18'59.646"W	1.87	
7840.00	89.750	182.470	6329.17	1425.35	-1380.48	-455.00	40°24'08.607"N	104°18'59.701"W	0.86	
7935.00	90.550	181.390	6328.92	1519.98	-1475.43	-458.20	40°24'07.668"N	104°18'59.743"W	1.41	
8029.00	90.060	183.160	6328.42	1613.67	-1569.35	-461.93	40°24'06.740"N	104°18'59.791"W	1.95	
8125.00	90.710	182.430	6327.78	1709.41	-1665.23	-466.62	40°24'05.793"N	104°18'59.851"W	1.02	
8219.00	90.350	184.910	6326.91	1803.25	-1759.02	-472.63	40°24'04.866"N	104°18'59.929"W	2.67	
8314.00	88.030	184.550	6328.25	1898.16	-1853.69	-480.46	40°24'03.931"N	104°19'00.030"W	2.47	
8409.00	89.200	184.400	6330.54	1993.04	-1948.37	-487.87	40°24'02.995"N	104°19'00.126"W	1.24	
8504.00	91.140	184.240	6330.26	2087.94	-2043.09	-495.03	40°24'02.059"N	104°19'00.219"W	2.05	
8598.00	90.370	182.870	6329.02	2181.76	-2136.90	-500.86	40°24'01.132"N	104°19'00.294"W	1.67	
8692.00	88.580	181.180	6329.89	2275.41	-2230.83	-504.18	40°24'00.204"N	104°19'00.337"W	2.62	
8787.00	89.570	180.600	6331.42	2369.86	-2325.80	-505.65	40°23'59.265"N	104°19'00.356"W	1.21	
8883.00	90.800	180.520	6331.11	2465.27	-2421.80	-506.59	40°23'58.317"N	104°19'00.368"W	1.28	



# Actual Wellpath Report

## ANTELOPE 11-14-15HNB AWP

Page 5 of 7



### REFERENCE WELLPATH IDENTIFICATION

Operator	BONANZA CREEK OIL COMPANY	Slot	SLOT#05 ANTELOPE 11-14-15HNB (382'FNL & 1093'FWL,SEC.15)
Area	COLORADO	Well	ANTELOPE 11-14-15HNB
Field	WELD COUNTY	Wellbore	ANTELOPE 11-14-15HNB AWB
Facility	SEC.15-T5N-R62W		

### WELLPATH DATA (112 stations)

MD [ft]	Inclination [°]	Azimuth [°]	TVD [ft]	Vert Sect [ft]	North [ft]	East [ft]	Latitude	Longitude	DLS [°/100ft]	Comments
8978.00	90.590	179.530	6329.96	2559.57	-2516.79	-506.63	40°23'57.378"N	104°19'00.368"W	1.07	
9073.00	89.750	179.510	6329.68	2653.77	-2611.78	-505.84	40°23'56.439"N	104°19'00.358"W	0.88	
9168.00	91.170	179.700	6328.91	2747.99	-2706.78	-505.18	40°23'55.501"N	104°19'00.350"W	1.51	
9262.00	90.220	181.590	6327.77	2841.41	-2800.76	-506.24	40°23'54.572"N	104°19'00.363"W	2.25	
9357.00	88.980	182.850	6328.44	2936.08	-2895.68	-509.92	40°23'53.634"N	104°19'00.411"W	1.86	
9452.00	90.120	182.300	6329.18	3030.80	-2990.58	-514.19	40°23'52.696"N	104°19'00.466"W	1.33	
9547.00	91.390	181.990	6327.93	3125.46	-3085.50	-517.74	40°23'51.758"N	104°19'00.512"W	1.38	
9642.00	89.660	182.930	6327.06	3220.16	-3180.41	-521.82	40°23'50.820"N	104°19'00.564"W	2.07	
9736.00	91.020	182.630	6326.50	3313.91	-3274.29	-526.38	40°23'49.893"N	104°19'00.623"W	1.48	
9831.00	88.920	181.010	6326.55	3408.52	-3369.24	-529.40	40°23'48.954"N	104°19'00.662"W	2.79	
9926.00	89.880	180.350	6327.55	3502.95	-3464.22	-530.53	40°23'48.016"N	104°19'00.677"W	1.23	
10021.00	91.020	180.230	6326.80	3597.30	-3559.22	-531.01	40°23'47.077"N	104°19'00.683"W	1.21	
10116.00	90.620	179.320	6325.44	3691.55	-3654.21	-530.63	40°23'46.138"N	104°19'00.678"W	1.05	
10211.00	90.710	179.710	6324.34	3785.75	-3749.20	-529.83	40°23'45.200"N	104°19'00.668"W	0.42	
10306.00	90.860	179.540	6323.04	3879.96	-3844.18	-529.21	40°23'44.261"N	104°19'00.660"W	0.24	
10401.00	91.820	179.350	6320.81	3974.12	-3939.15	-528.29	40°23'43.323"N	104°19'00.648"W	1.03	
10495.00	92.220	179.680	6317.50	4067.28	-4033.09	-527.49	40°23'42.394"N	104°19'00.638"W	0.55	
10590.00	92.310	181.380	6313.75	4161.61	-4128.01	-528.37	40°23'41.456"N	104°19'00.649"W	1.79	
10685.00	92.500	181.750	6309.76	4256.11	-4222.89	-530.96	40°23'40.519"N	104°19'00.682"W	0.44	
10781.00	93.860	181.950	6304.43	4351.58	-4318.69	-534.06	40°23'39.572"N	104°19'00.722"W	1.43	
10874.00	94.690	181.850	6297.50	4443.96	-4411.38	-537.13	40°23'38.656"N	104°19'00.762"W	0.90	Last Survey Point
10930.00	94.690	181.850	6292.92	4499.55	-4467.16	-538.93	40°23'38.105"N	104°19'00.785"W	0.00	Projection to Bit



# Actual Wellpath Report

ANTELOPE 11-14-15HNB AWP

Page 6 of 7



## REFERENCE WELLPATH IDENTIFICATION

Operator	BONANZA CREEK OIL COMPANY	Slot	SLOT#05 ANTELOPE 11-14-15HNB (382'FNL & 1093'FWL,SEC.15)
Area	COLORADO	Well	ANTELOPE 11-14-15HNB
Field	WELD COUNTY	Wellbore	ANTELOPE 11-14-15HNB AWB
Facility	SEC.15-T5N-R62W		

## HOLE & CASING SECTIONS - Ref Wellbore: ANTELOPE 11-14-15HNB AWB Ref Wellpath: ANTELOPE 11-14-15HNB AWP

String/Diameter	Start MD [ft]	End MD [ft]	Interval [ft]	Start TVD [ft]	End TVD [ft]	Start N/S [ft]	Start E/W [ft]	End N/S [ft]	End E/W [ft]
13.5in Open Hole	17.00	442.00	425.00	17.00	441.99	0.00	0.00	-1.62	-2.29
9.625in Casing Surface	17.00	442.00	425.00	17.00	441.99	0.00	0.00	-1.62	-2.29
8.75in Open Hole	442.00	6786.00	6344.00	441.99	6330.16	-1.62	-2.29	-327.19	-434.14
7in Casing Intermediate	17.00	6775.00	6758.00	17.00	6330.15	0.00	0.00	-316.20	-434.04
6.125in Open Hole	6786.00	10930.00	4144.00	6330.16	6292.92	-327.19	-434.14	-4467.16	-538.93

## TARGETS

Name	MD [ft]	TVD [ft]	North [ft]	East [ft]	Grid East [US ft]	Grid North [US ft]	Latitude	Longitude	Shape
ANTELOPE A-E-15HNB SECTION 15		0.00	80.15	2.78	3330010.50	1393097.07	40°24'23.040"N	104°18'53.784"W	polygon
ANTELOPE 11-14-15HNB BHL FROM PLAT REV-1 (470'FSL & 660'FWL,SEC.15)		6303.00	-4484.67	-545.95	3329522.84	1388525.52	40°23'37.932"N	104°19'00.876"W	point
ANTELOPE 11-14-15HNB TARGET		6303.00	-156.65	-437.24	3329573.70	1392854.42	40°24'20.700"N	104°18'59.472"W	point
ANTELOPE A-E-15HNB HARDLINES 460' SETBACK FNL/FSL		6303.00	80.15	2.78	3330010.50	1393097.07	40°24'23.040"N	104°18'53.784"W	polygon
ANTELOPE 11-14-15HNB BHL FROM PLAT REV-2 (470'FSL & 660'FWL,SEC.15)		6338.00	-4484.67	-545.95	3329522.84	1388525.52	40°23'37.932"N	104°19'00.876"W	point

## WELLPATH COMPOSITION - Ref Wellbore: ANTELOPE 11-14-15HNB AWB Ref Wellpath: ANTELOPE 11-14-15HNB AWP

Start MD [ft]	End MD [ft]	Positional Uncertainty Model	Log Name/Comment	Wellbore
17.00	6800.00	NaviTrak (MagCorr)	BHI/Navitrak MWD MagCorr 8.75" Hole <511'-6800'>	ANTELOPE 11-14-15HNB AWB
6800.00	10874.00	NaviTrak (Standard)	BHI/Navitrak MWD 6.125" Hole <6891'-10874'>	ANTELOPE 11-14-15HNB AWB
10874.00	10930.00	Blind Drilling (std)	Projection to bit	ANTELOPE 11-14-15HNB AWB





**Actual Wellpath Report**  
**ANTELOPE 11-14-15HNB AWP**  
Page 7 of 7



REFERENCE WELLPATH IDENTIFICATION			
Operator	BONANZA CREEK OIL COMPANY	Slot	SLOT#05 ANTELOPE 11-14-15HNB (382'FNL & 1093'FWL,SEC.15)
Area	COLORADO	Well	ANTELOPE 11-14-15HNB
Field	WELD COUNTY	Wellbore	ANTELOPE 11-14-15HNB AWB
Facility	SEC.15-T5N-R62W		

WELLPATH COMMENTS				
MD [ft]	Inclination [°]	Azimuth [°]	TVD [ft]	Comment
511.00	0.880	234.680	510.98	Tie on Point
10874.00	94.690	181.850	6297.50	Last Survey Point
10930.00	94.690	181.850	6292.92	Projection to Bit