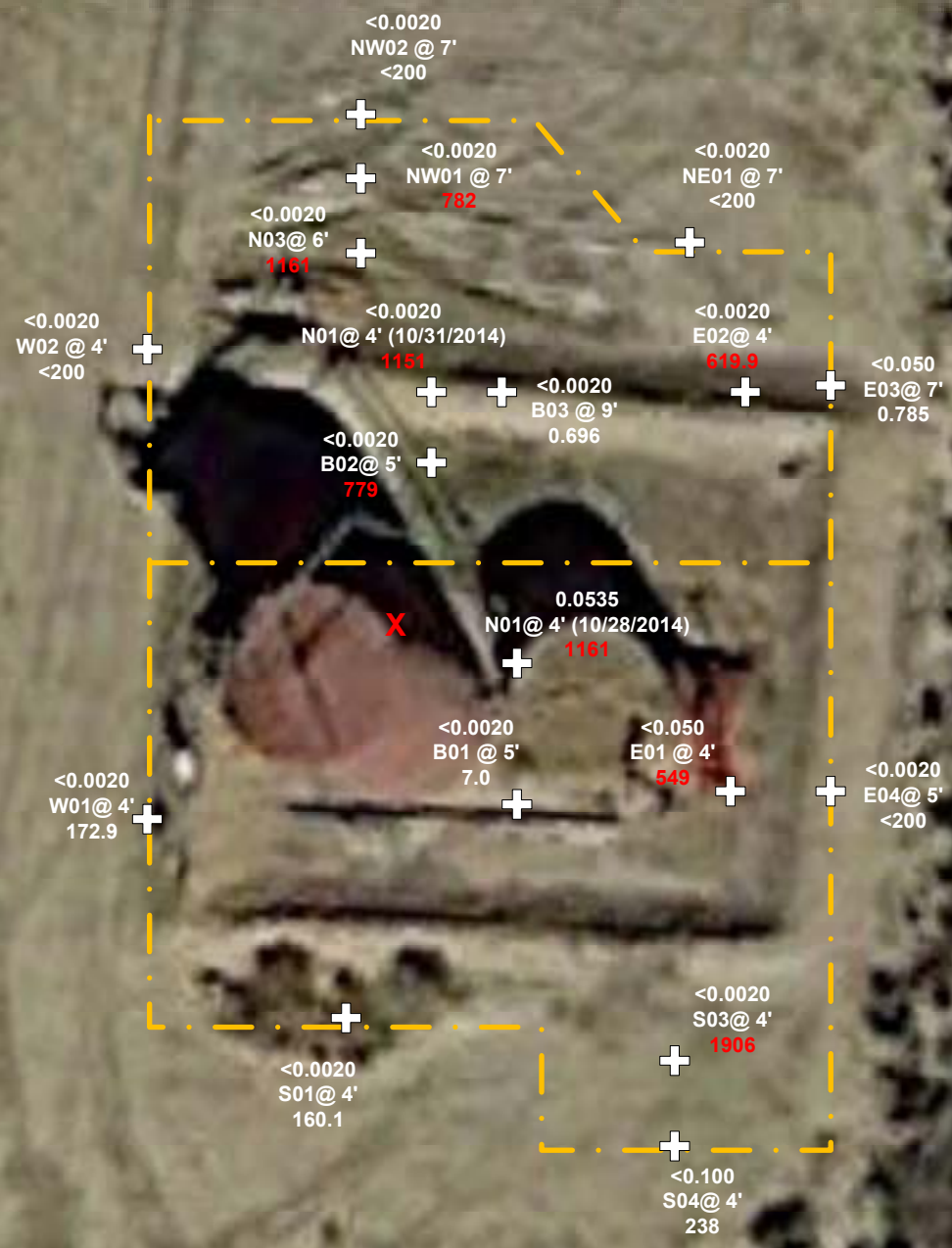




Surface Drainage



Benzene Concentrations Listed Above Sample ID.
TPH Concentrations Listed Below Sample ID.



Image Source:
Google Earth 2014

DRAWN BY:	BRN
DATE:	11/7/2014

Facility Diagram
 Kerr-McGee Oil and Gas Onshore, LP
 Kugel W 4-3, 4-6
 NENW S4 T2N R66W
 Weld County, CO

6899 Pecos St., Unit C
 Denver, CO 80221

LEGEND

- Approximate Excavation Extent
- Approximate Release Location
- Approximate Soil Sample Location

FIGURE 2
 SITE AND SAMPLE LOCATION MAP