

Company: Omimex Petroleum Inc

Well: Bledsoe 6-28-5-44

Field: Ballyneal

County: Yuma State: Colorado

Platform Express

Caliper

Cement Volume

County: Yuma

Field: Ballyneal

Location: SENW Sec.28, T5N, R44W

Well: Bledsoe 6-28-5-44

Company: Omimex Petroleum Inc

Location:

SENNW Sec.28, T5N, R44W

SHL: 1548' FNL x 1363' FWL

Elev.: K.B. 3742.00 ft

G.L. 3736.00 ft

D.F. 3741.00 ft

Permanent Datum: \_\_\_\_\_

Ground Level \_\_\_\_\_

Elev.: 3736.00 f

Log Measured From: \_\_\_\_\_

Kelly Bushing \_\_\_\_\_

6.00 ft

above Perm. Datum

Drilling Measured From: \_\_\_\_\_

Kelly Bushing \_\_\_\_\_

API Serial No. 05-125-12082-00

Section: 28

Township: 5N

Range: 44W

Logging Date	22-Jun-2014		
Run Number	Run 1		
Depth Driller	2545.00 ft		
Schlumberger Depth	2534.50 ft		
Bottom Log Interval	2534.50 ft		
Top Log Interval	468.50 ft		
Casing Driller Size @ Depth	7 in @ 467.00 ft		
Casing Schlumberger	468.5 ft		
Bit Size	6.25 in		
Type Fluid In Hole	WBM		
Density	8.8 lbm/gal	30 s	
Fluid Loss	6 cm3	7.5	
Source of Sample	Flowline		
RM @ Meas Temp	0.18 ohm.m	@	85.66 degF
RMF @ Meas Temp	0.14 ohm.m	@	85.66 degF
RMC @ Meas Temp	0.22 ohm.m	@	85.66 degF
Source RMF	Calculated	Calculated	
RM @ BHT	0.14 @ 111.83	0.11 @ 111.83	
Max Recorded Temperatures	111.83 degF		
Circulation Stopped	Time 22-Jun-2014	05:00:00	
Logger on Bottom	Time 22-Jun-2014	11:10:00	
Unit Number	Location: 9101	Ft. Morgan, CO	
Recorded By	Alekssei Bekhterev		
Witnessed By	Paul Dekaye		

Disclaimer

THE USE OF AND RELIANCE UPON THIS RECORDED-DATA BY THE HEREIN NAMED COMPANY (AND ANY OF ITS AFFILIATES, PARTNERS, REPRESENTATIVES, AGENTS, CONSULTANTS AND EMPLOYEES) IS SUBJECT TO THE TERMS AND CONDITIONS AGREED UPON BETWEEN SCHLUMBERGER AND THE COMPANY, INCLUDING: (a) RESTRICTIONS ON USE OF THE RECORDED-DATA; (b) DISCLAIMERS AND WAIVERS OF WARRANTIES AND REPRESENTATIONS REGARDING COMPANY'S USE AND RELIANCE UPON THE RECORDED-DATA; AND (c) CUSTOMER'S FULL AND SOLE RESPONSIBILITY FOR ANY INFERENCE DRAWN OR DECISION MADE IN CONNECTION WITH THE USE OF THIS RECORDED-DATA.

Contents

1. Header
2. Disclaimer
3. Contents
4. Well Sketch
5. Borehole Size/Casing/Tubing Record
6. Operational Run Summary
7. Borehole Fluids
8. Remarks and Equipment Summary
9. Depth Summary
10. Survey Record
11. Run 1

11.1 Integration Summary

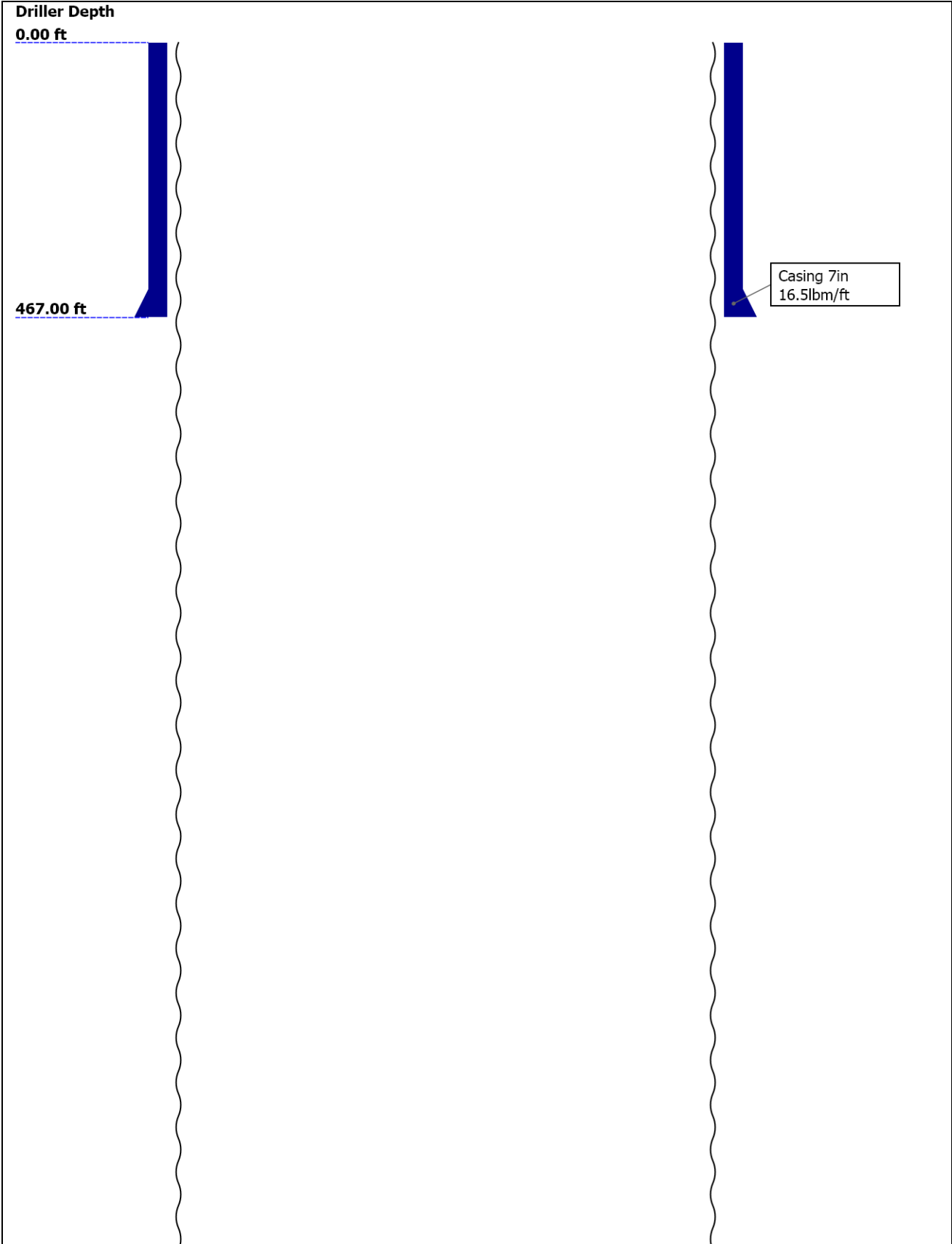
11.2 Software Version

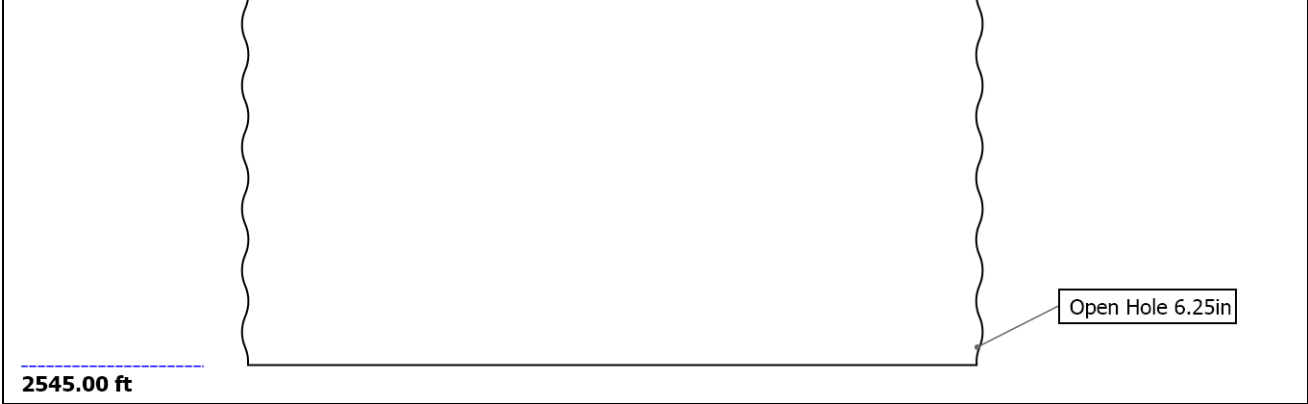
11.3 Composite Summary

11.4 Log ( Noble East Caliper )

11.5 Parameter Listing
12. Calibration Report

Well Sketch





Borehole Size/Casing/Tubing Record

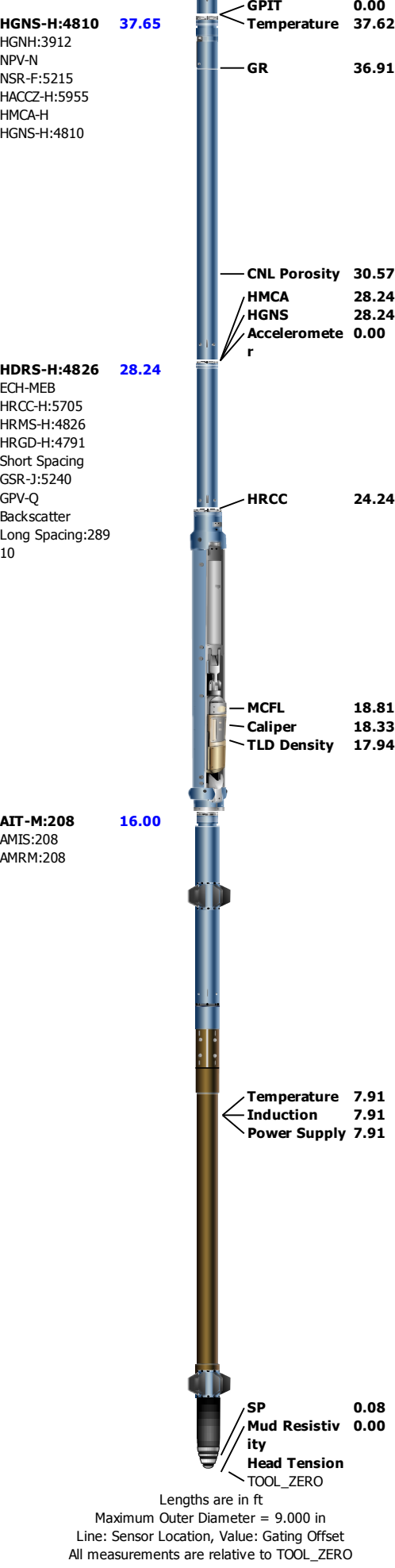
Bit						
Bit Size ( in )	6.25					
Top Driller ( ft )	0					
Top Logger ( ft )	0					
Bottom Driller ( ft )	2545					
Bottom Logger ( ft )	2534.5					
Casing						
Size ( in )	7					
Weight ( lbm/ft )	16.5					
Inner Diameter ( in )	6.554					
Grade	N/A					
Top Driller ( ft )	0					
Top Logger ( ft )	0					
Bottom Driller ( ft )	467					
Bottom Logger ( ft )	468.5					

Operational Run Summary

Parameter ( unit )	Run 1					
Date Log Started	22-Jun-2014					
Time Log Started	10:18:34					
Date Log Finished	22-Jun-2014					
Time Log Finished	12:08:17					
Top Log Interval ( ft )	468.50					
Bottom Log Interval ( ft )	2534.50					
Total Depth ( ft )	2534.50					
Max Hole Deviation ( deg )	0.00					
Azimuth of Max Deviation ( deg )	0.00					
Bit Size ( in )	6.250					
Logging Unit Number	9101					
Logging Unit Location	Ft. Morgan, CO					
Recorded By	Aleksei Bekhterev					
Witnessed By	Paul Dekaye					

\_\_\_\_\_

[illegible][illegible]



# Depth Summary

	Run 1		
--	-------	--	--

Depth Measuring Device			
Type	IDW-B		
Serial Number			
Calibration Date			
Calibrator Serial Number			
Calibration Cable Type			
Wheel Correction 1	0		
Wheel Correction 2	0		

Tension Device			
Type	CMTD-B/A		
Serial Number			
Calibration Date			
Calibrator Serial Number			
Number of Calibration Points	0		

Logging Cable			
Type	7-46A-XS		
Serial Number			
Length	21500.00 ft		
Conveyance Type	Wireline		
Rig Type	Land Rig		

Run 1:Depth Control Parameters		Depth Control Remarks	
Log Sequence	First Log In the Well	All Schlumberger depth polices followed	
Rig Up Length At Surface		IDW used as primary depth device	
Rig Up Length At Bottom		Z-chart used as secondary depth reference	
Rig Up Length Correction			
Stretch Correction			
Tool Zero Check At Surface			

Survey Record

Survey Calculation			
Method :	Minimum Radius of Curvature	DLS Method :	Lubinski
North Reference :	True North	Total Correction Formula :	Magnetic Dec

Rig Location			
Latitude :	40.377050 degrees	Longitude :	-102.27618 degrees
Tie In Point			
Measured Depth:	0.00 ft	Inclination:	0.00 deg
True Vertical Depth:	0.00 ft	North Displacement:	0.00 ft
		Azimuth:	0.00 deg
		East Displacement:	0.00 ft

Survey Quality Index	
9 : Manual	28 : Tie-In Point

Survey Correction Index	
0 : No correction	

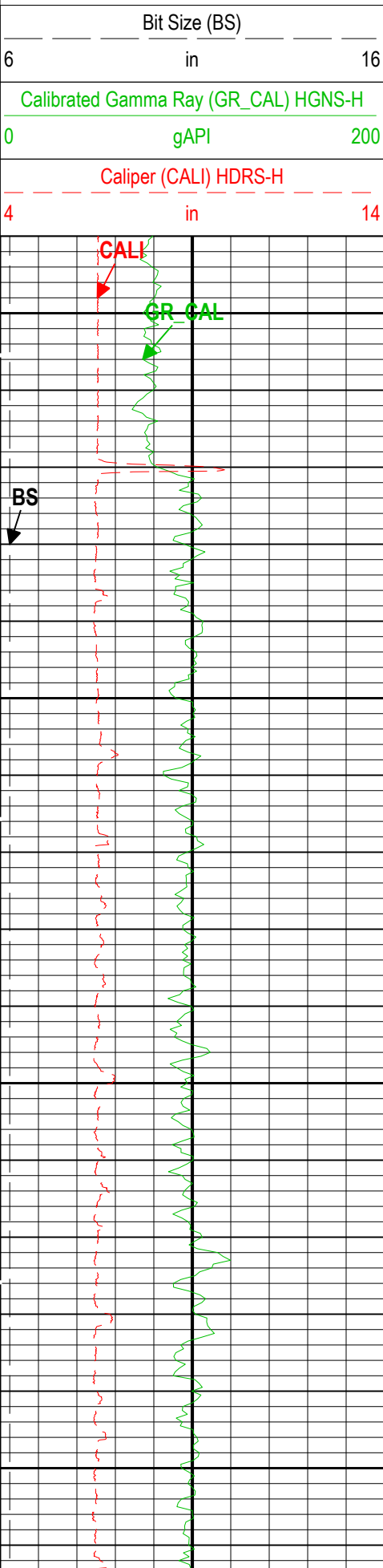
Survey Description Index	
0 : Not Flagged Survey	

Seq	MD (ft)	Incl (deg)	Azim (deg)	Course (ft)	TVD (ft)	V Sec (ft)	N/ -S (ft)	E/ -W (ft)	Closure (ft)	at Azim (deg)	DLS deg/100ft	Tool Type	QI	CI	DI
1	0.00	0.00	0.00	----	0.00	0.00	0.00	0.00	0.00	90.00	0.00	TIP	28	0	0
2	465.50	0.62	50.75	465.50	465.49	1.60	1.60	1.96	2.53	50.75	0.13	GPIT-F	9	0	0
3	495.50	0.69	81.21	30.00	495.49	1.73	1.73	2.26	2.85	52.59	1.17	GPIT-F	9	0	0
4	525.50	0.70	85.48	30.00	525.49	1.77	1.77	2.62	3.15	55.94	0.17	GPIT-F	9	0	0
5	555.50	0.69	84.01	30.00	555.48	1.80	1.80	2.98	3.48	58.81	0.07	GPIT-F	9	0	0
6	585.50	0.66	85.49	30.00	585.48	1.84	1.84	3.33	3.81	61.13	0.10	GPIT-F	9	0	0
7	615.50	0.64	85.12	30.00	615.48	1.86	1.86	3.67	4.13	63.07	0.09	GPIT-F	9	0	0
8	645.50	0.62	86.65	30.00	645.48	1.89	1.89	4.00	4.43	64.72	0.08	GPIT-F	9	0	0
9	675.50	0.51	83.22	30.00	675.48	1.91	1.91	4.29	4.69	65.97	0.37	GPIT-F	9	0	0
10	705.50	0.51	87.54	30.00	705.48	1.94	1.94	4.56	4.95	67.00	0.13	GPIT-F	9	0	0
11	735.50	0.45	90.04	30.00	735.48	1.94	1.94	4.81	5.18	68.03	0.23	GPIT-F	9	0	0

12	765.50	0.51	128.19	30.00	765.47	1.86	1.86	5.03	5.38	69.74	1.07	GPIT-F	9	0	0
13	795.50	0.59	109.53	30.00	795.47	1.72	1.72	5.28	5.54	71.94	0.64	GPIT-F	9	0	0
14	825.50	0.60	108.35	30.00	825.47	1.62	1.62	5.58	5.81	73.78	0.05	GPIT-F	9	0	0
15	855.50	0.61	102.67	30.00	855.47	1.54	1.54	5.88	6.07	75.33	0.20	GPIT-F	9	0	0
16	885.50	0.58	97.72	30.00	885.47	1.48	1.48	6.18	6.36	76.51	0.20	GPIT-F	9	0	0
17	915.50	0.56	96.43	30.00	915.47	1.45	1.45	6.48	6.63	77.41	0.08	GPIT-F	9	0	0
18	945.50	0.57	93.53	30.00	945.47	1.42	1.42	6.77	6.92	78.14	0.10	GPIT-F	9	0	0
19	975.50	0.58	95.05	30.00	975.46	1.40	1.40	7.07	7.22	78.81	0.08	GPIT-F	9	0	0
20	1005.50	0.51	98.66	30.00	1005.46	1.37	1.37	7.36	7.48	79.48	0.27	GPIT-F	9	0	0
21	1035.50	0.63	112.06	30.00	1035.46	1.28	1.28	7.64	7.74	80.46	0.59	GPIT-F	9	0	0
22	1065.50	0.51	108.55	30.00	1065.46	1.18	1.18	7.92	8.01	81.52	0.41	GPIT-F	9	0	0
23	1095.50	0.72	115.90	30.00	1095.46	1.06	1.06	8.21	8.27	82.68	0.76	GPIT-F	9	0	0
24	1125.50	0.65	103.82	30.00	1125.46	0.93	0.93	8.55	8.60	83.78	0.53	GPIT-F	9	0	0
25	1155.50	0.67	102.87	30.00	1155.45	0.85	0.85	8.89	8.92	84.53	0.08	GPIT-F	9	0	0
26	1185.50	0.68	103.17	30.00	1185.45	0.77	0.77	9.23	9.25	85.22	0.01	GPIT-F	9	0	0
27	1215.50	0.62	127.90	30.00	1215.45	0.63	0.63	9.53	9.55	86.21	0.94	GPIT-F	9	0	0
28	1245.50	0.77	104.15	30.00	1245.45	0.48	0.48	9.86	9.88	87.20	1.06	GPIT-F	9	0	0
29	1275.50	0.77	101.14	30.00	1275.44	0.39	0.39	10.25	10.27	87.80	0.13	GPIT-F	9	0	0
30	1305.50	0.83	100.16	30.00	1305.44	0.32	0.32	10.66	10.66	88.30	0.20	GPIT-F	9	0	0
31	1335.50	0.87	102.62	30.00	1335.44	0.23	0.23	11.09	11.09	88.82	0.18	GPIT-F	9	0	0
32	1365.50	0.78	100.44	30.00	1365.44	0.14	0.14	11.52	11.52	89.29	0.32	GPIT-F	9	0	0
33	1395.50	0.86	100.40	30.00	1395.43	0.07	0.07	11.94	11.94	89.69	0.28	GPIT-F	9	0	0
34	1425.50	0.95	98.56	30.00	1425.43	-0.01	-0.01	12.41	12.40	90.06	0.31	GPIT-F	9	0	0
35	1455.50	1.03	100.91	30.00	1455.42	-0.10	-0.10	12.92	12.93	90.45	0.30	GPIT-F	9	0	0
36	1485.50	1.01	98.44	30.00	1485.42	-0.19	-0.19	13.44	13.45	90.81	0.15	GPIT-F	9	0	0
37	1515.50	0.96	94.38	30.00	1515.41	-0.25	-0.25	13.96	13.94	91.02	0.29	GPIT-F	9	0	0
38	1545.50	1.12	95.22	30.00	1545.41	-0.29	-0.29	14.50	14.50	91.16	0.53	GPIT-F	9	0	0
39	1575.50	1.31	95.13	30.00	1575.40	-0.35	-0.35	15.13	15.12	91.33	0.63	GPIT-F	9	0	0
40	1605.50	1.22	92.97	30.00	1605.40	-0.40	-0.40	15.79	15.81	91.45	0.33	GPIT-F	9	0	0
41	1635.50	1.25	91.68	30.00	1635.39	-0.43	-0.43	16.44	16.44	91.48	0.14	GPIT-F	9	0	0
42	1665.50	1.26	92.49	30.00	1665.38	-0.45	-0.45	17.10	17.09	91.51	0.06	GPIT-F	9	0	0
43	1695.50	1.35	92.13	30.00	1695.37	-0.48	-0.48	17.78	17.78	91.54	0.31	GPIT-F	9	0	0
44	1725.50	1.31	94.69	30.00	1725.37	-0.52	-0.52	18.48	18.47	91.61	0.24	GPIT-F	9	0	0
45	1755.50	1.30	96.44	30.00	1755.36	-0.58	-0.58	19.16	19.16	91.75	0.13	GPIT-F	9	0	0
46	1785.50	1.39	97.66	30.00	1785.35	-0.67	-0.67	19.86	19.88	91.94	0.29	GPIT-F	9	0	0
47	1815.50	1.47	98.07	30.00	1815.34	-0.77	-0.77	20.60	20.60	92.15	0.30	GPIT-F	9	0	0
48	1845.50	1.56	98.91	30.00	1845.33	-0.89	-0.89	21.38	21.39	92.39	0.31	GPIT-F	9	0	0
49	1875.50	1.61	99.21	30.00	1875.32	-1.02	-1.02	22.21	22.24	92.64	0.17	GPIT-F	9	0	0
50	1905.50	1.72	98.17	30.00	1905.31	-1.15	-1.15	23.07	23.10	92.86	0.37	GPIT-F	9	0	0
51	1935.50	1.89	102.41	30.00	1935.29	-1.32	-1.32	24.00	24.05	93.16	0.71	GPIT-F	9	0	0
52	1965.50	2.01	105.44	30.00	1965.27	-1.57	-1.57	24.99	25.03	93.60	0.52	GPIT-F	9	0	0
53	1995.50	2.04	104.98	30.00	1995.25	-1.85	-1.85	26.01	26.08	94.07	0.13	GPIT-F	9	0	0
54	2025.50	2.11	104.03	30.00	2025.23	-2.12	-2.12	27.06	27.13	94.48	0.24	GPIT-F	9	0	0
55	2055.50	2.02	102.54	30.00	2055.22	-2.37	-2.37	28.11	28.22	94.82	0.35	GPIT-F	9	0	0
56	2085.50	2.04	102.98	30.00	2085.20	-2.60	-2.60	29.15	29.27	95.10	0.10	GPIT-F	9	0	0
57	2115.50	2.08	100.65	30.00	2115.18	-2.82	-2.82	30.20	30.35	95.34	0.30	GPIT-F	9	0	0
58	2145.50	1.98	100.22	30.00	2145.16	-3.02	-3.02	31.25	31.40	95.51	0.31	GPIT-F	9	0	0
59	2175.50	1.96	99.39	30.00	2175.14	-3.19	-3.19	32.26	32.41	95.65	0.13	GPIT-F	9	0	0
60	2205.50	1.85	97.97	30.00	2205.12	-3.34	-3.34	33.25	33.40	95.74	0.40	GPIT-F	9	0	0
61	2235.50	1.96	94.67	30.00	2235.11	-3.45	-3.45	34.24	34.42	95.76	0.52	GPIT-F	9	0	0
62	2265.50	1.90	92.04	30.00	2265.09	-3.51	-3.51	35.24	35.43	95.69	0.34	GPIT-F	9	0	0
63	2295.50	1.82	87.51	30.00	2295.07	-3.51	-3.51	36.22	36.38	95.53	0.57	GPIT-F	9	0	0
64	2325.50	1.59	89.84	30.00	2325.06	-3.49	-3.49	37.11	37.27	95.37	0.81	GPIT-F	9	0	0
65	2355.50	1.55	88.89	30.00	2355.05	-3.48	-3.48	37.93	38.09	95.24	0.15	GPIT-F	9	0	0
66	2385.50	1.55	88.89	30.00	2385.05	-3.48	-3.48	38.75	38.91	95.11	0.15	GPIT-F	9	0	0
67	2415.50	1.55	88.89	30.00	2415.05	-3.48	-3.48	39.57	39.73	94.98	0.15	GPIT-F	9	0	0
68	2445.50	1.55	88.89	30.00	2445.05	-3.48	-3.48	40.39	40.55	94.85	0.15	GPIT-F	9	0	0
69	2475.50	1.55	88.89	30.00	2475.05	-3.48	-3.48	41.21	41.37	94.72	0.15	GPIT-F	9	0	0
70	2505.50	1.55	88.89	30.00	2505.05	-3.48	-3.48	42.03	42.19	94.59	0.15	GPIT-F	9	0	0
71	2535.50	1.55	88.89	30.00	2535.05	-3.48	-3.48	42.85	43.01	94.46	0.15	GPIT-F	9	0	0
72	2565.50	1.55	88.89	30.00	2565.05	-3.48	-3.48	43.67	43.83	94.33	0.15	GPIT-F	9	0	0
73	2595.50	1.55	88.89	30.00	2595.05	-3.48	-3.48	44.49	44.65	94.20	0.15	GPIT-F	9	0	0
74	2625.50	1.55	88.89	30.00	2625.05	-3.48	-3.48	45.31	45.47	94.07	0.15	GPIT-F	9	0	0
75	2655.50	1.55	88.89	30.00	2655.05	-3.48	-3.48	46.13	46.29	93.94	0.15	GPIT-F	9	0	0
76	2685.50	1.55	88.89	30.00	2685.05	-3.48	-3.48	46.95	47.11	93.81	0.15	GPIT-F	9	0	0
77	2715.50	1.55	88.89	30.00	2715.05	-3.48	-3.48	47.77	47.93	93.68	0.15	GPIT-F	9	0	0
78	2745.50	1.55	88.89	30.00	2745.05	-3.48	-3.48	48.59	48.75	93.55	0.15	GPIT-F	9	0	0
79	2775.50	1.55	88.89	30.00	2775.05	-3.48	-3.48	49.41	49.57	93.42	0.15	GPIT-F	9	0	0
80	2805.50	1.55	88.89	30.00	2805.05	-3.48	-3.48	50.23	50.39	93.29	0.15	GPIT-F	9	0	0
81	2835.50	1.55	88.89	30.00	2835.05	-3.48	-3.48	51.05	51.21	93.16	0.15	GPIT-F	9	0	0
82	2865.50	1.55	88.89	30.00	2865.05	-3.48	-3.48	51.87	52.03	93.03	0.15	GPIT-F	9	0	0
83	2895.50	1.55	88.89	30.00	2895.05	-3.48	-3.48	52.69	52.85	92.90	0.15	GPIT-F	9	0	0
84	2925.50	1.55	88.89	30.00	2925.05	-3.48	-3.48	53.51	53.67	92.77	0.15	GPIT-F	9	0	0
85	2955.50	1.55	88.89	30.00	2955.05	-3.48	-3.48	54.33	54.49	92.64	0.15	GPIT-F	9	0	0
86	2985.50	1.55	88.89	30.00	2985.05	-3.48	-3.48	55.15	55.31	92.51	0.15	GPIT-F	9	0	0
87	3015.50	1.55	88.89	30.00	3015.05	-3.48	-3.48	55.97	56.13	92.38	0.15	GPIT-F	9	0	0
88	3045.50	1.55	88.89	30.00	3045.05	-3.48	-3.48	56.79	56.95	92.25	0.15	GPIT-F	9	0	0
89	3075.50	1.55	88.89	30.00	3075.05	-3.48	-3.48	57.61	57.77	92.12	0.15	GPIT-F	9	0	0
90	3105.50	1.55	88.89	30.00	3105.05	-3.48	-3.48	58.43	58.59	91.99	0.15	GPIT-F	9	0	0
91	3135.50	1.55	88.89	30.00	3135.05	-3.48	-3.48	59.25	59.41	91.86	0.15	GPIT-F	9	0	0
92	3165.50	1.55	88.89	30.00	3165.05	-3.48	-3.48	60.07	60.23	91.73	0.15	GPIT-F	9	0	0
93	3195.50	1.55	88.89	30.00	3195.05	-3.48	-3.48	60.89	61.05	91.60	0.15	GPIT-F	9	0	0
94	3225.50	1.55	88.89	30.00	3225.05	-3.48	-3.48	61.71	61.87	91.47	0.15	GPIT-F	9	0	0
95	3255.50	1.55	88.89	30.00	3255.05	-3.48	-3.48	62.53	62.69	91.34	0.15	GPIT-F	9	0	0
96	3285.50	1.55	8												

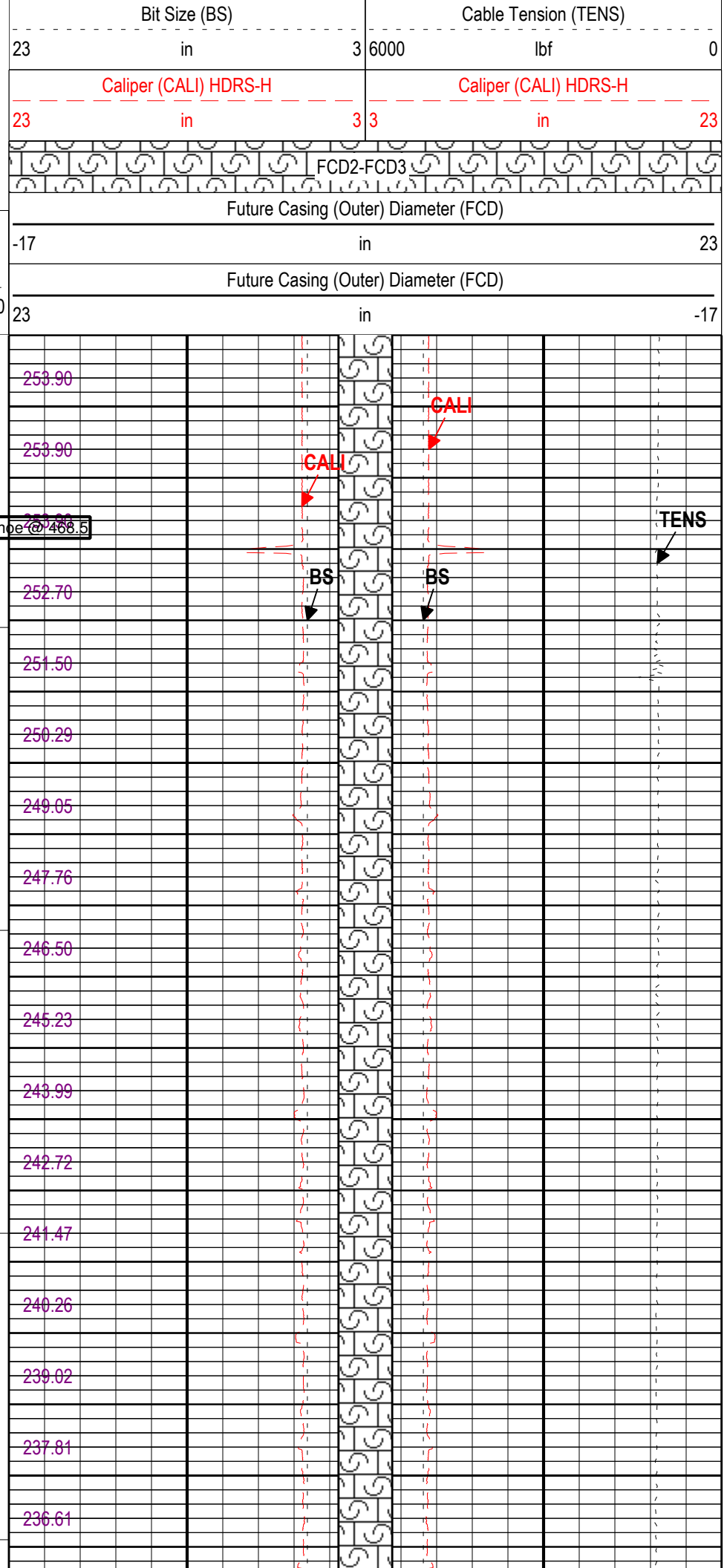
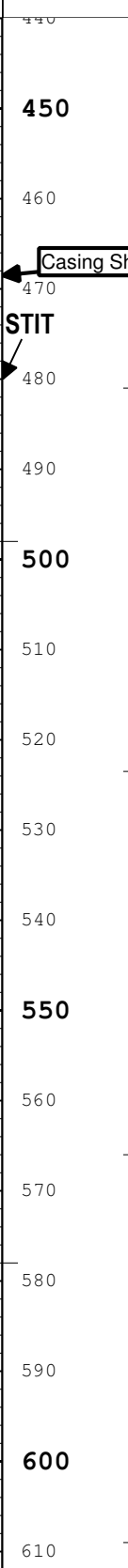
Integrated Cement Volume (ICV) ft3	Bit Size (BS)	
	3	23

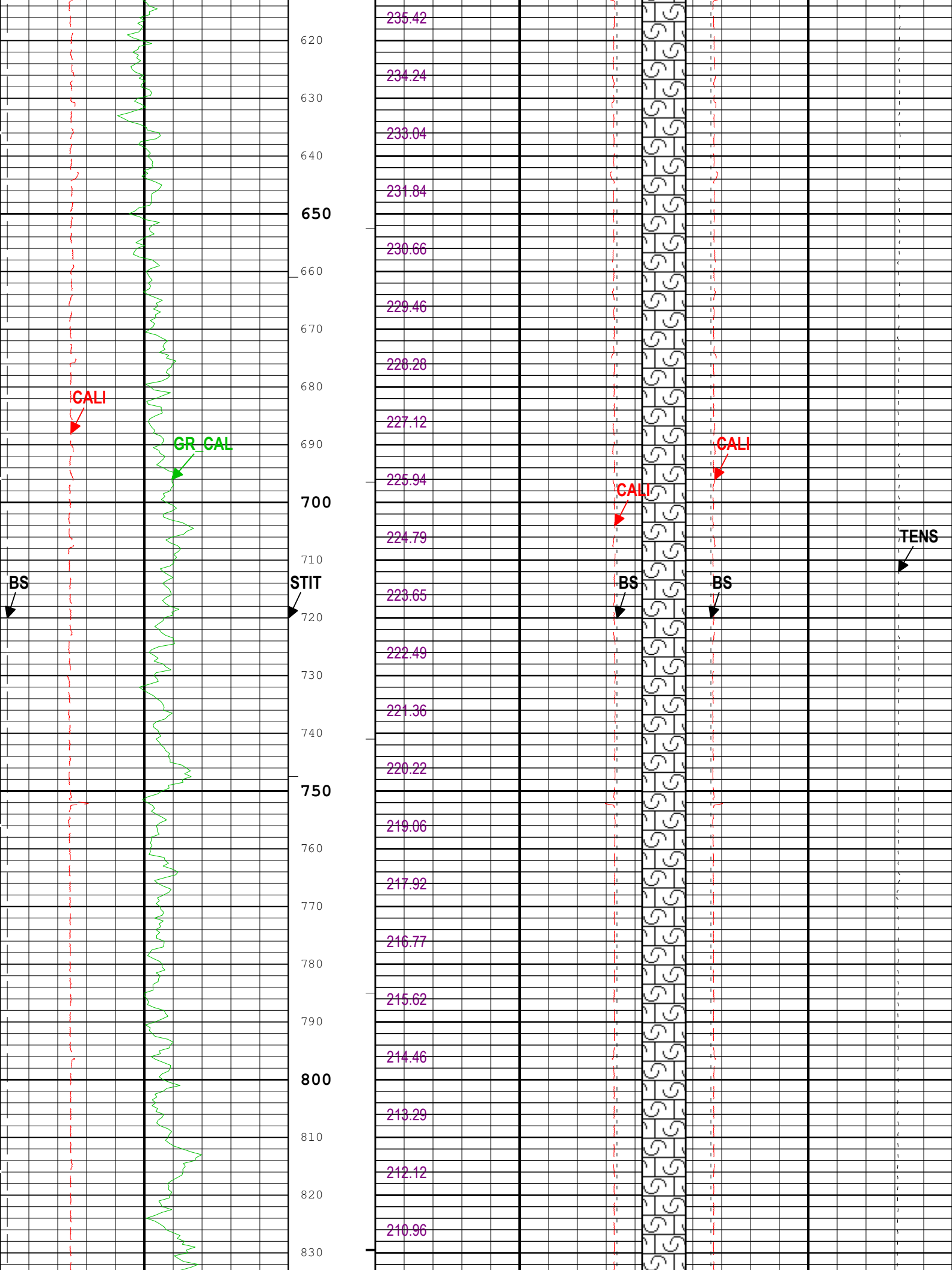


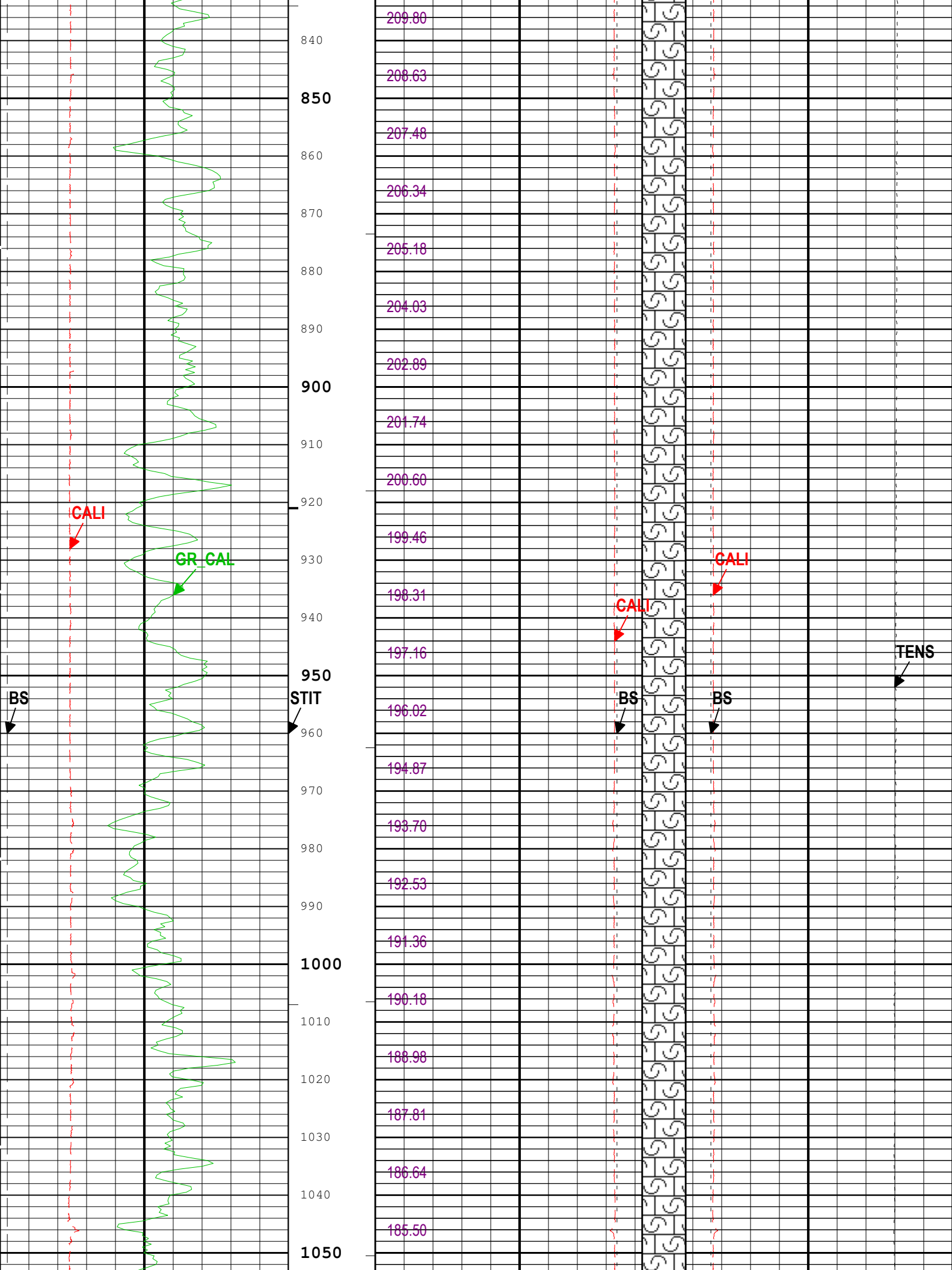


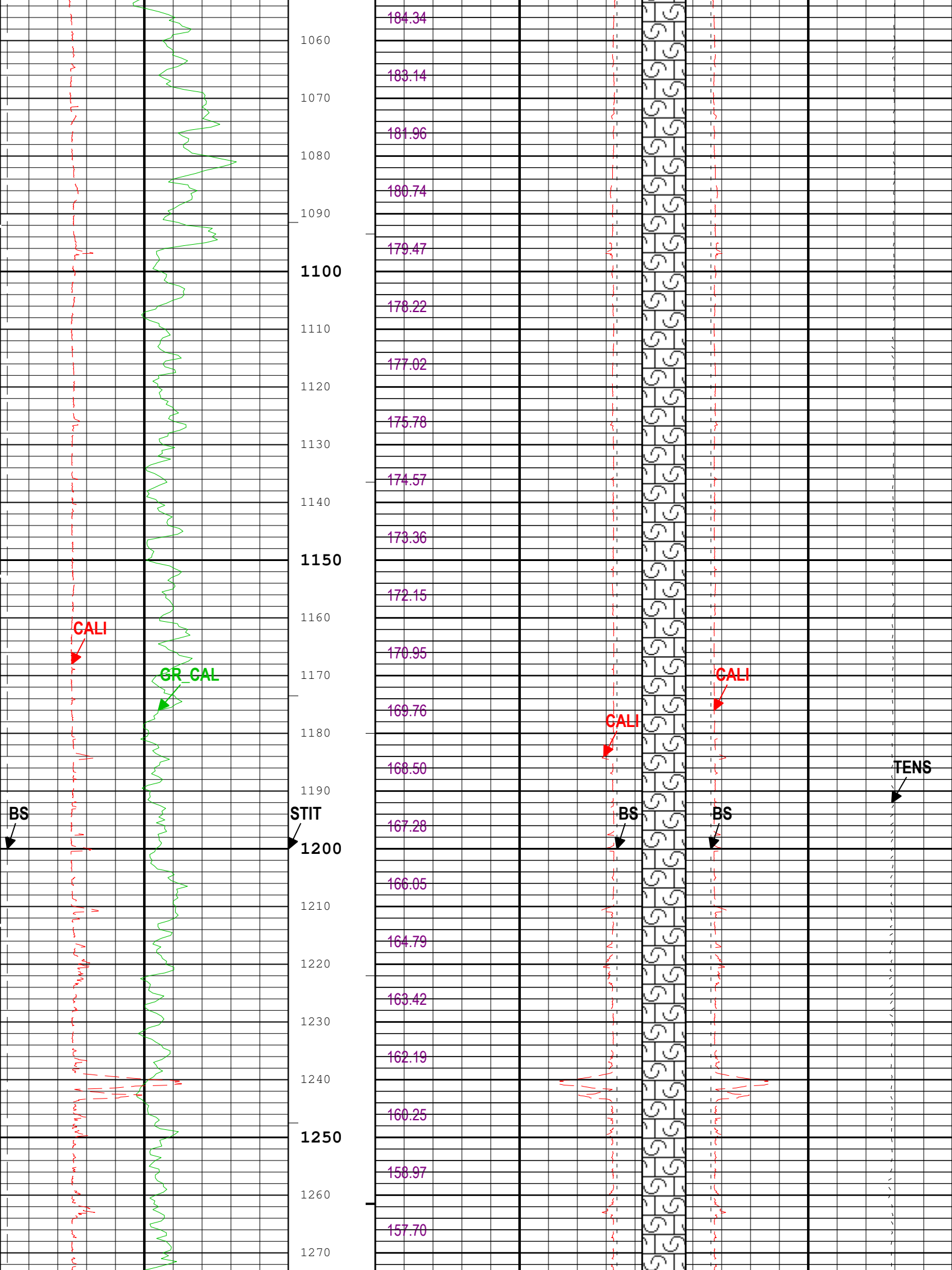
Stuck Tool  
Indicator,  
Total (STIT)

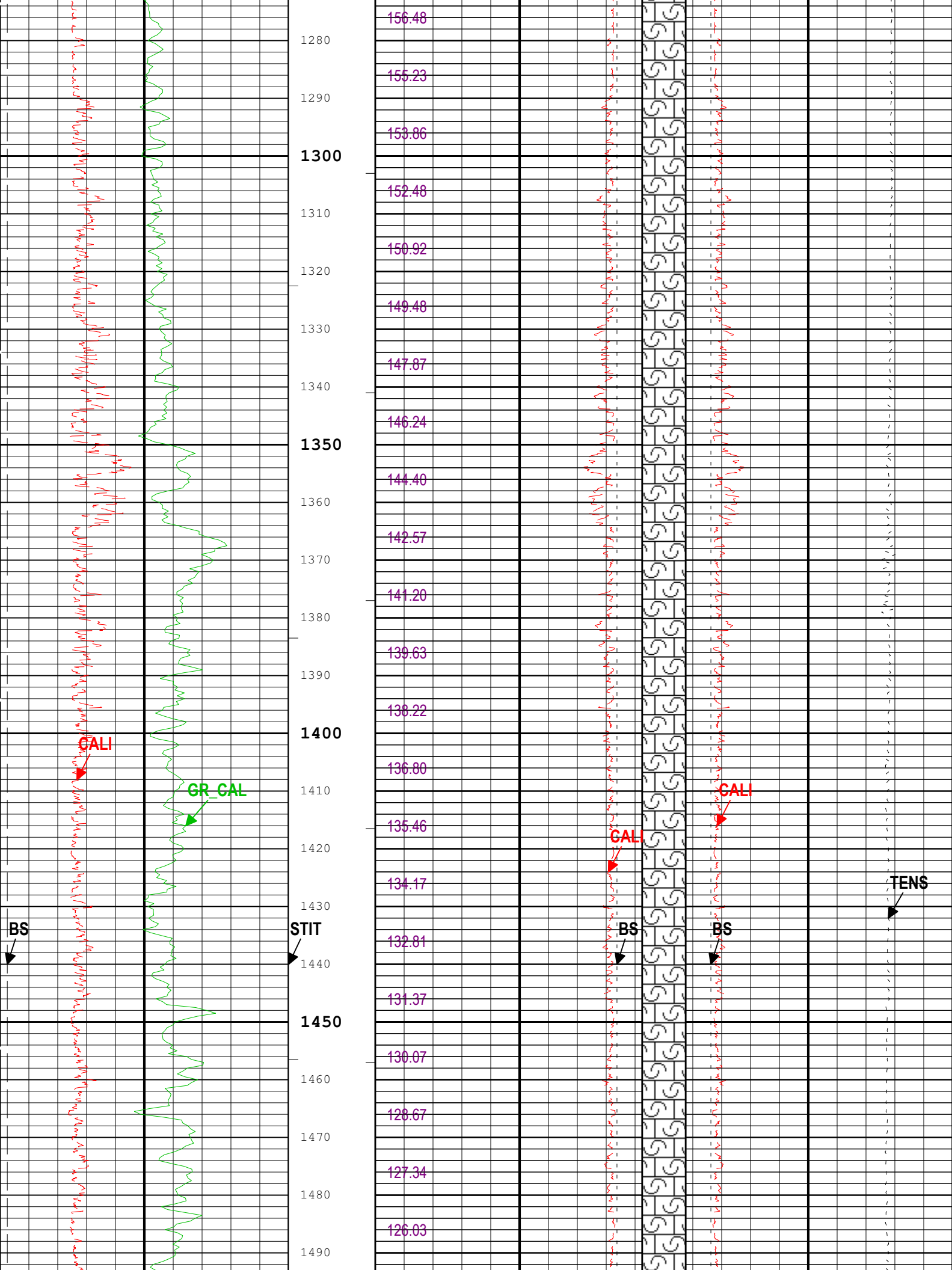
0 ft 50

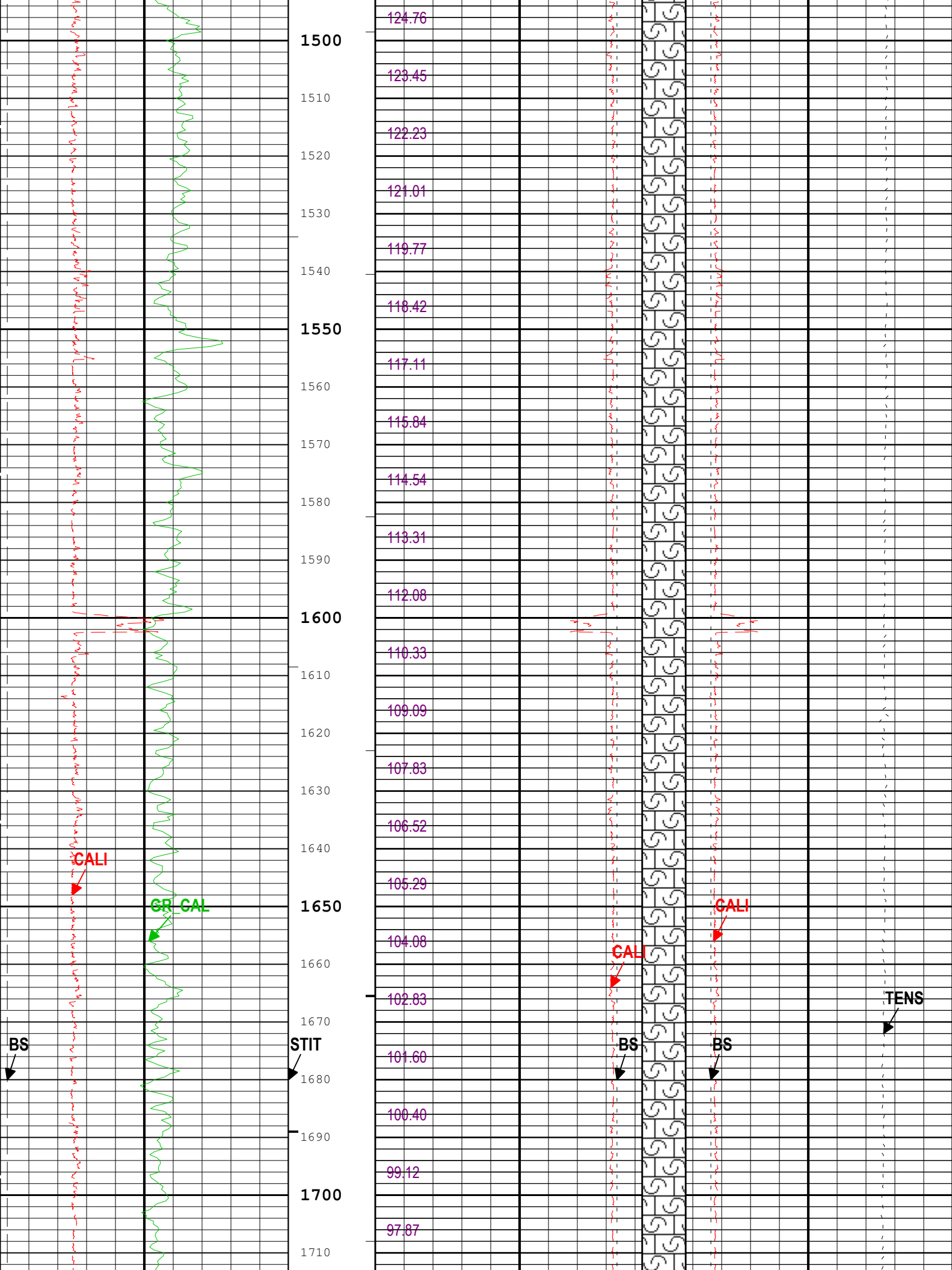


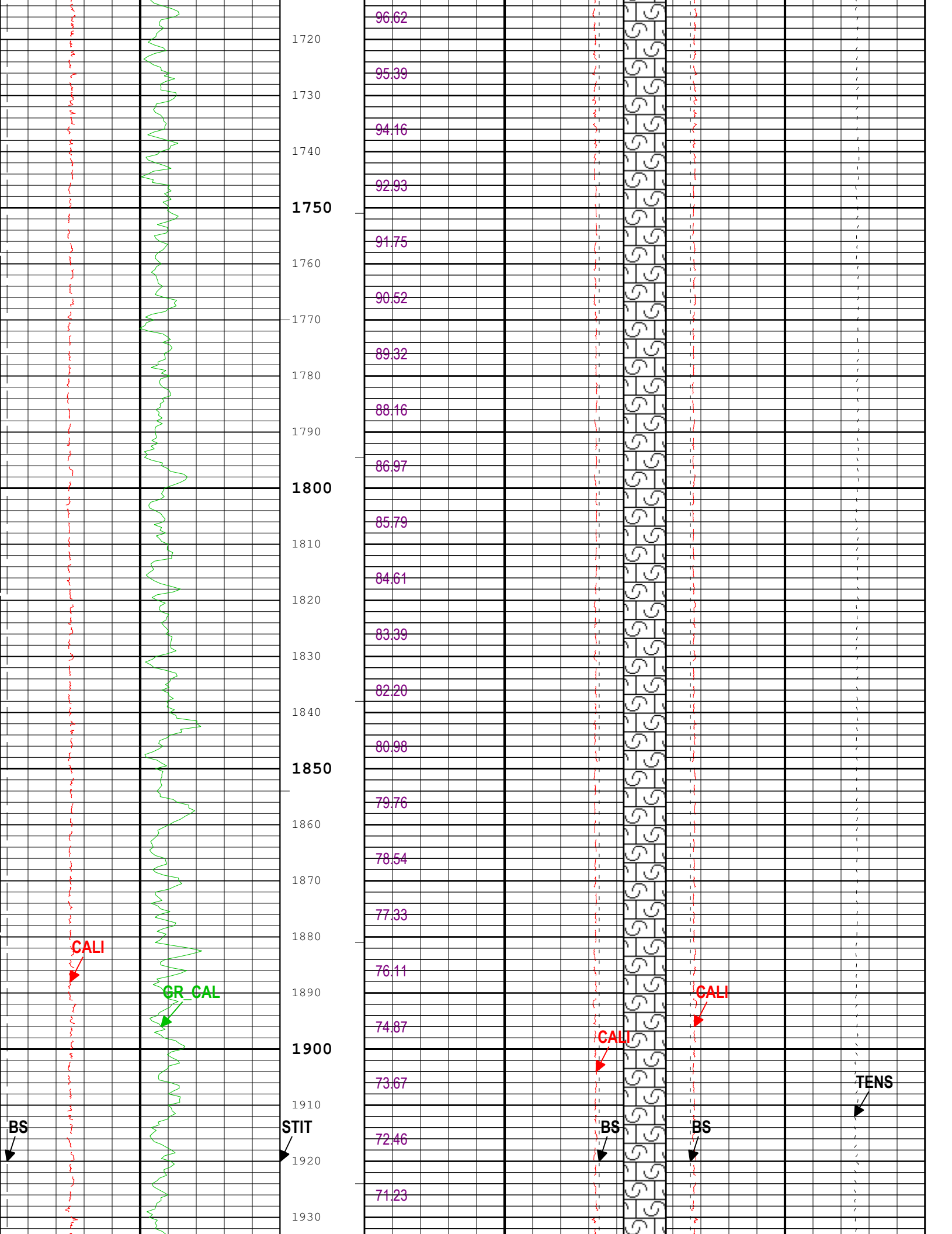


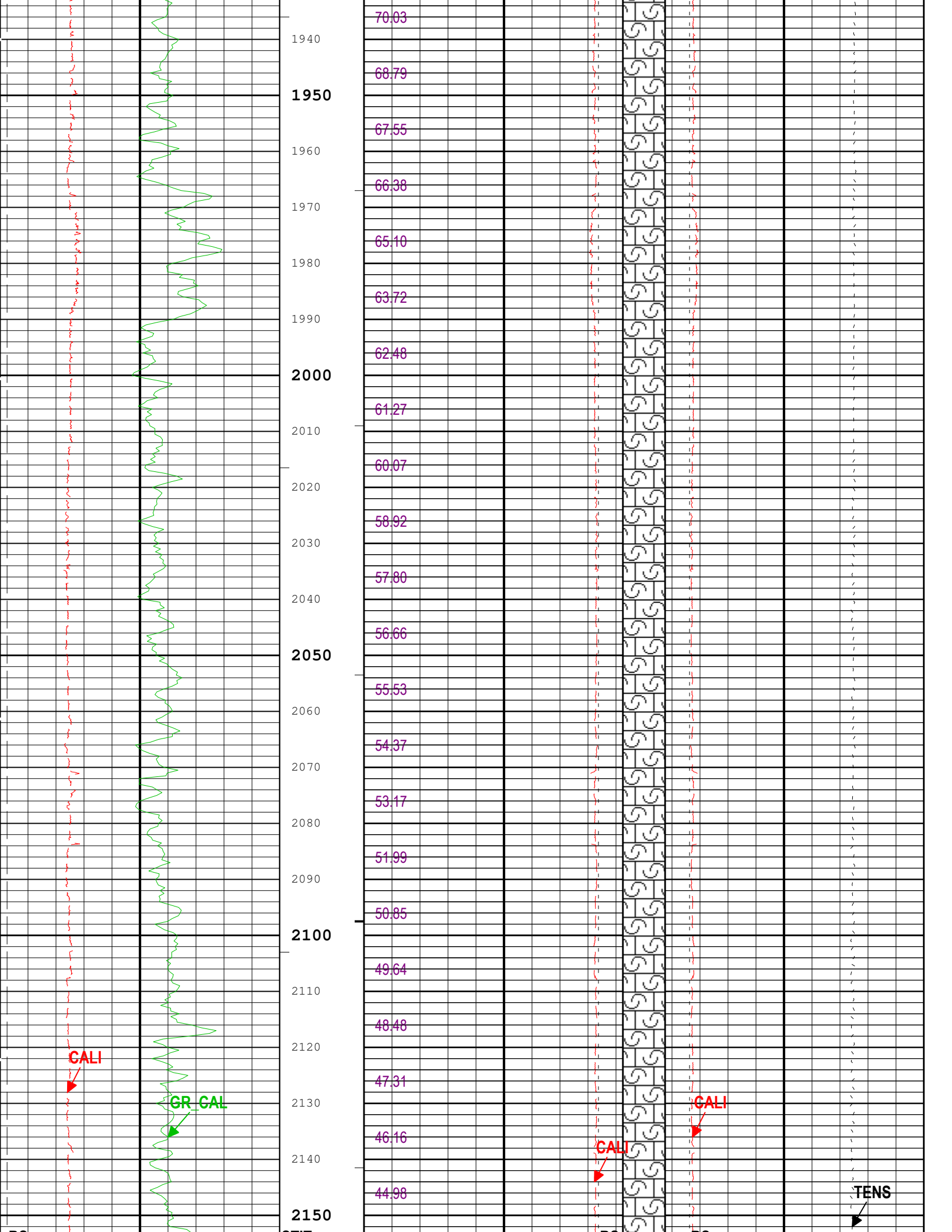




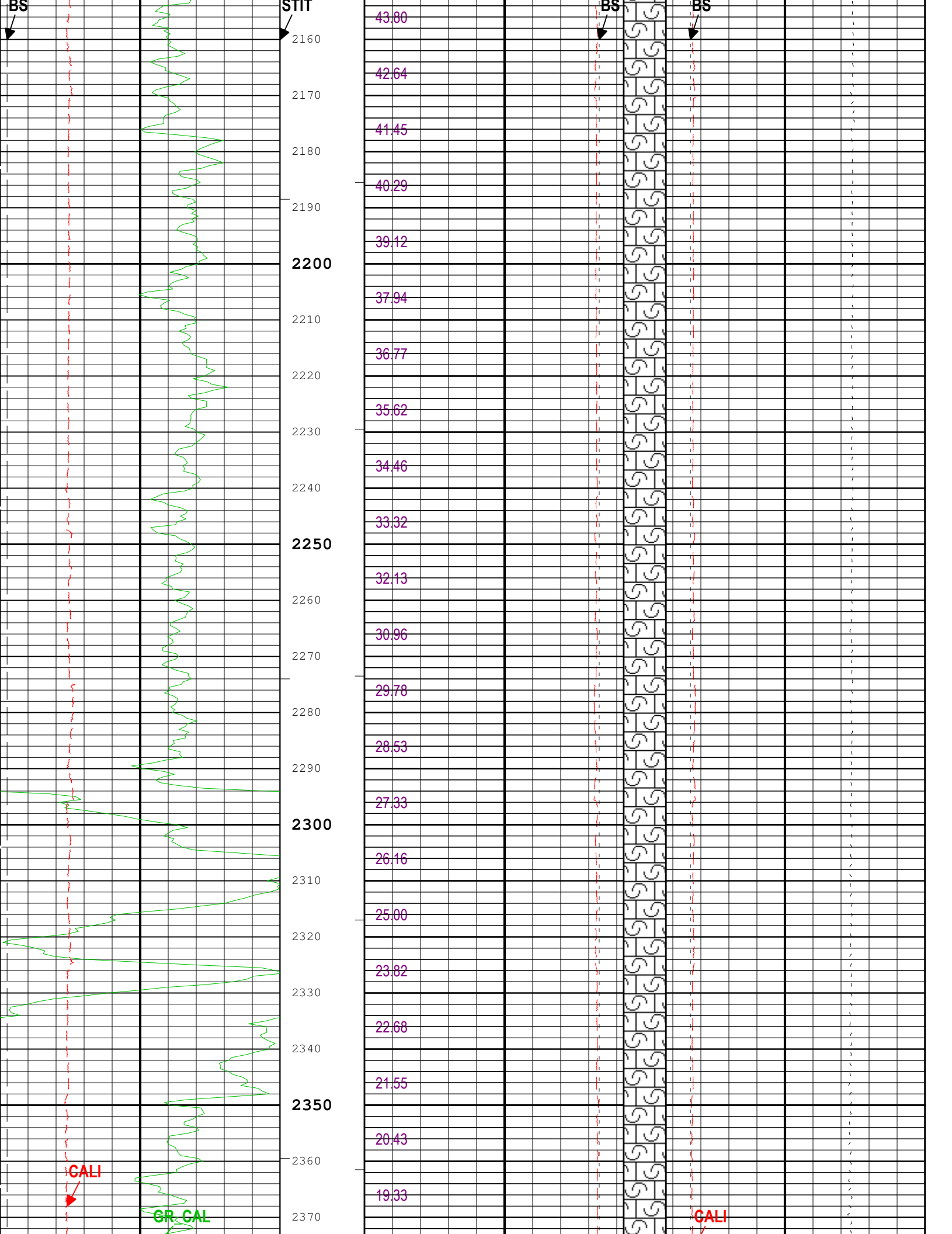


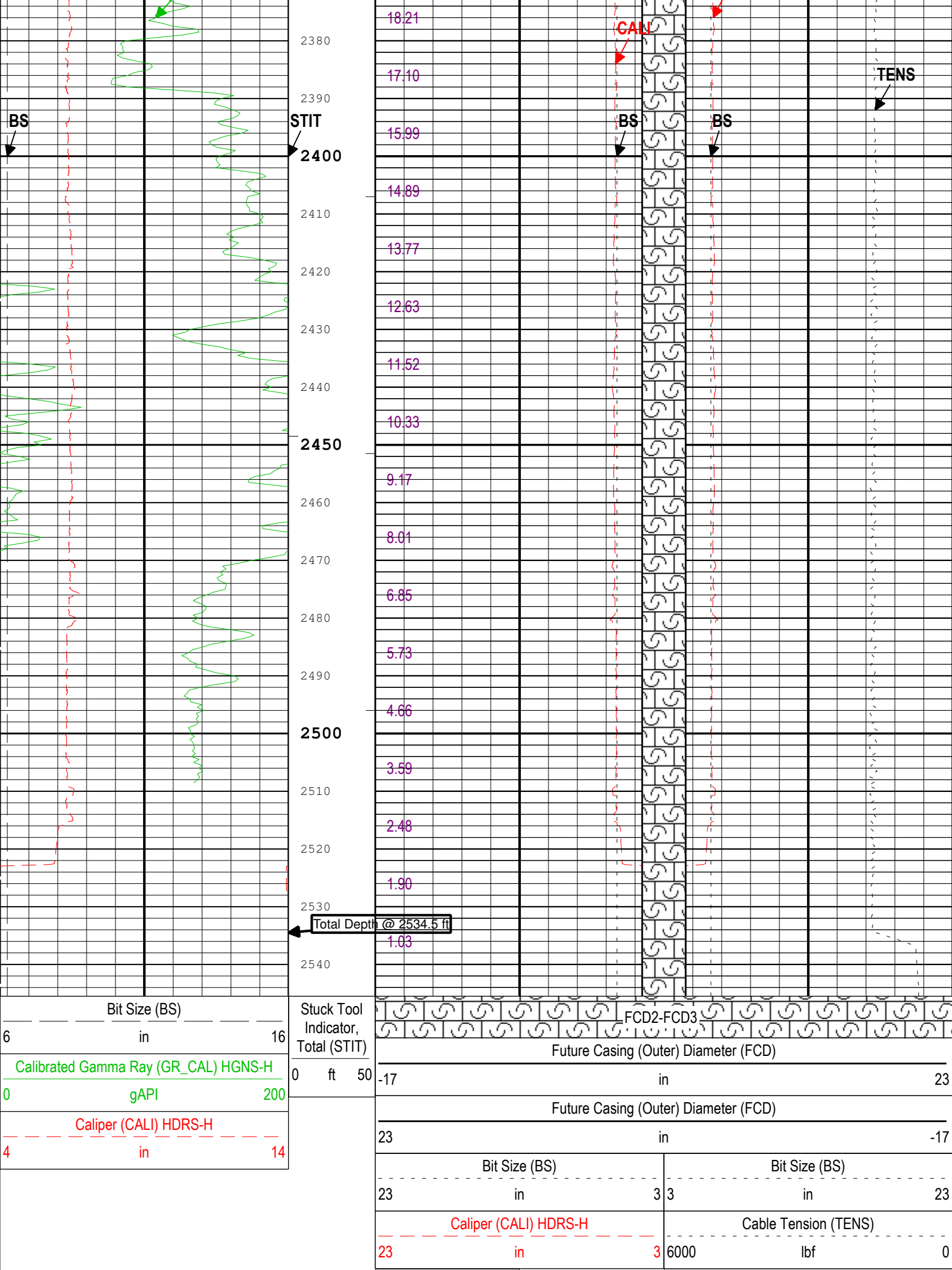












18.21

17.10

15.99

14.89

13.77

12.63

11.52

10.33

9.17

8.01

6.85

5.73

4.66

3.59

2.48

1.90

1.03

CALI

BS

BS

TENS

STIT

BS

Total Depth @ 2534.5 ft

FCD2-FCD3

Future Casing (Outer) Diameter (FCD)

Future Casing (Outer) Diameter (FCD)

Bit Size (BS)

Bit Size (BS)

Caliper (CALI) HDRS-H

Cable Tension (TENS)

Bit Size (BS)

Stuck Tool Indicator, Total (STIT)

Calibrated Gamma Ray (GR\_CAL) HGNS-H

gAPI

Caliper (CALI) HDRS-H

Integrated Cement  
Volume (ICV)  
ft3

Caliper (CALI) HDRS-H  
3 in 23

ICV - Integrated Cement Volume every 10.00 (ft3)

IHV - Integrated Hole Volume every 10.00 (ft3)

ICV - Integrated Cement Volume every 100.00 (ft3)

TIME\_1900 - Time Marked every 60.00 (s)

IHV - Integrated Hole Volume every 100.00 (ft3)

Description:    Format: Log ( Noble East Caliper )    Index Scale: 5 in per 100 ft    Index Unit: ft    Index Type: Measured Depth    Creation Date: 22-Jun-2014 23:13:56

Channel Processing Parameters				
Parameter	Description	Tool	Value	Unit
BHS	Borehole Status (Open or Cased Hole)	Borehole	Open	
BS	Bit Size	WLSESSION	6.25	in
CALI_SHIFT	CALI Supplementary Offset	HDRS-H	0.169	in
CBLO	Casing Bottom (Logger)	WLSESSION	468.5	ft
CSODDRL	Casing Outer Diameter - Zoned along driller depths	WLSESSION	7	in
DC_MODE	Depth Correction Mode	DepthCorrection	Real-time	
FCD	Future Casing (Outer) Diameter	WLSESSION	4.5	in
GCSE_DOWN_PASS	Generalized Caliper Selection for WL Log Down Passes	Borehole	BS	
GCSE_UP_PASS	Generalized Caliper Selection for WL Log Up Passes	Borehole	CALI	
TD	Total Measured Depth	Borehole	2534.5	ft

Tool Control Parameters				
Parameter	Description	Tool	Value	Unit
MAX_LOG_SPEED	Toolstring Maximum Logging Speed	WLSESSION	3600	ft/h

Calibration Report			
HDRS-H (HILT Density and Rxo Sonde, 150 degC) Calibration - Run 1			
Primary Equipment :			
	HILT High-Resolution Control Cartridge, 150 degC	HRCC-H	5705
	HILT Resistivity Gamma-Ray Density Device, 150 degC	HRGD-H	4791
Auxiliary Equipment :			
	HRDD Backscatter Detector	Backscatter	
	HRDD Long Spacing Detector	Long Spacing	28910
	HRDD Short Spacing Detector	Short Spacing	
	Cesium 137 Gamma-Ray Logging Source	GSR-J	5240
	HILT High-Resolution Control Cartridge, 150 degC	HRCC-H	5705
	HILT High-Resolution Mechanical Sonde, 150 degC	HRMS-H	4826
Calibration Parameter :			
	Small Ring Size (Caliper Calibration Small Ring)	8.00	
	Large Ring Size (Caliper Calibration Large Ring)	12.00	

HDRS Caliper Calibration - Caliper Accumulations							
Before (Measured):                      19:31:02 19-Jun-2014    Expired by 1 days							
Measurement	Unit	Phase	Nominal	Low Limit	Actual	High Limit	
Small Ring	in	Before	8.00	6.00	8.31	10.00	
Large Ring	in	Before	12.00	9.00	12.47	15.00	

HDRS Density Calibration - Inversion Results							
Master (EEPROM):                      16:39:32 03-Jun-2014							
Measurement	Unit	Phase	Nominal	Low Limit	Actual	High Limit	
Rho Aluminum	g/cm3	Master	2.596	2.586	2.598	2.606	
Rho Magnesium	g/cm3	Master	1.686	1.676	1.687	1.696	

Pe Aluminum		Master	2.570	2.470	2.574	2.750	<div><div></div><div></div><div></div><div></div><div></div></div>
Pe Magnesium		Master	2.650	2.550	2.607	2.750	<div><div></div><div></div><div></div><div></div><div></div></div>

## HDRS Density Calibration - Deviation Summary

Master (EEPROM): 16:39:32 03-Jun-2014

Measurement	Unit	Phase	Nominal	Low Limit	Actual	High Limit	<div><div></div><div></div><div></div><div></div><div></div></div>
BS Average Deviation	%	Master	0	-0.6000	0.2649	0.6000	<div><div></div><div></div><div></div><div></div><div></div></div>
BS Max Deviation	%	Master	0	-1.6000	0.8290	1.6000	<div><div></div><div></div><div></div><div></div><div></div></div>
SS Average Deviation	%	Master	0	-1.0000	0.3086	1.0000	<div><div></div><div></div><div></div><div></div><div></div></div>
SS Max Deviation	%	Master	0	-2.5000	1.1228	2.5000	<div><div></div><div></div><div></div><div></div><div></div></div>
LS Average Deviation	%	Master	0	-1.5000	0.4693	1.5000	<div><div></div><div></div><div></div><div></div><div></div></div>
LS Max Deviation	%	Master	0	-3.5000	1.2657	3.5000	<div><div></div><div></div><div></div><div></div><div></div></div>

## HDRS Density Calibration - Background Summary

Master (EEPROM): 16:39:32 03-Jun-2014 Before (Measured): 19:35:08 19-Jun-2014 Expired by 1 days

Measurement	Unit	Phase	Nominal	Low Limit	Actual	High Limit	<div><div></div><div></div><div></div><div></div><div></div></div>
BS Window Ratio		Master	1.0000		0.7360		<div><div></div><div></div><div></div><div></div><div></div></div>
		Before	0.7360	0.6992	0.7381	0.7728	<div><div></div><div></div><div></div><div></div><div></div></div>
		Before-Master	-----	-----	0.0021	-----	<div><div></div><div></div><div></div><div></div><div></div></div>
BS Window Sum	1/s	Master	1		25209		<div><div></div><div></div><div></div><div></div><div></div></div>
		Before	25209	23949	25468	26470	<div><div></div><div></div><div></div><div></div><div></div></div>
		Before-Master	-----	-----	259	-----	<div><div></div><div></div><div></div><div></div><div></div></div>
SS Window Ratio		Master	1.0000		0.4860		<div><div></div><div></div><div></div><div></div><div></div></div>
		Before	0.4860	0.4617	0.4854	0.5103	<div><div></div><div></div><div></div><div></div><div></div></div>
		Before-Master	-----	-----	-0.0006	-----	<div><div></div><div></div><div></div><div></div><div></div></div>
SS Window Sum	1/s	Master	1		11308		<div><div></div><div></div><div></div><div></div><div></div></div>
		Before	11308	10743	11278	11874	<div><div></div><div></div><div></div><div></div><div></div></div>
		Before-Master	-----	-----	-30	-----	<div><div></div><div></div><div></div><div></div><div></div></div>
LS Window Ratio		Master	1.0000		0.3004		<div><div></div><div></div><div></div><div></div><div></div></div>
		Before	0.3004	0.2854	0.2996	0.3154	<div><div></div><div></div><div></div><div></div><div></div></div>
		Before-Master	-----	-----	-0.0008	-----	<div><div></div><div></div><div></div><div></div><div></div></div>
LS Window Sum	1/s	Master	1		1327		<div><div></div><div></div><div></div><div></div><div></div></div>
		Before	1327	1261	1323	1394	<div><div></div><div></div><div></div><div></div><div></div></div>
		Before-Master	-----	-----	-4	-----	<div><div></div><div></div><div></div><div></div><div></div></div>

## HDRS Density Calibration - Photo-multiplier High Voltages

Master (EEPROM): 16:39:32 03-Jun-2014 Before (Measured): 19:35:08 19-Jun-2014 Expired by 1 days

Measurement	Unit	Phase	Nominal	Low Limit	Actual	High Limit	<div><div></div><div></div><div></div><div></div><div></div></div>
BS PM High Voltage	V	Master		1000	1347	2400	<div><div></div><div></div><div></div><div></div><div></div></div>
		Before		1000	1349	2400	<div><div></div><div></div><div></div><div></div><div></div></div>
		Before-Master	-----	-100	2	100	<div><div></div><div></div><div></div><div></div><div></div></div>
SS PM High Voltage	V	Master		1000	1984	2400	<div><div></div><div></div><div></div><div></div><div></div></div>
		Before		1000	2014	2400	<div><div></div><div></div><div></div><div></div><div></div></div>
		Before-Master	-----	-100	30	100	<div><div></div><div></div><div></div><div></div><div></div></div>
LS PM High Voltage	V	Master		1000	1313	2400	<div><div></div><div></div><div></div><div></div><div></div></div>
		Before		1000	1314	2400	<div><div></div><div></div><div></div><div></div><div></div></div>
		Before-Master	-----	-100	1	100	<div><div></div><div></div><div></div><div></div><div></div></div>

## HDRS Density Calibration - Crystal Quality Resolutions

Master (EEPROM): 16:39:32 03-Jun-2014 Before (Measured): 19:35:08 19-Jun-2014 Expired by 1 days

Measurement	Unit	Phase	Nominal	Low Limit	Actual	High Limit	<div><div></div><div></div><div></div><div></div><div></div></div>
BS Crystal Resolution	%	Master		5.00	11.99	25.00	<div><div></div><div></div><div></div><div></div><div></div></div>
		Before		5.00	12.09	25.00	<div><div></div><div></div><div></div><div></div><div></div></div>
		Before-Master	-----	-1.00	0.10	1.00	<div><div></div><div></div><div></div><div></div><div></div></div>
SS Crystal Resolution	%	Master		5.00	10.54	20.00	<div><div></div><div></div><div></div><div></div><div></div></div>
		Before		5.00	10.45	20.00	<div><div></div><div></div><div></div><div></div><div></div></div>
		Before-Master	-----	-1.00	-0.09	1.00	<div><div></div><div></div><div></div><div></div><div></div></div>
LS Crystal Resolution	%	Master		5.00	8.53	20.00	<div><div></div><div></div><div></div><div></div><div></div></div>
		Before		5.00	8.50	20.00	<div><div></div><div></div><div></div><div></div><div></div></div>
		Before-Master	-----	-1.00	-0.03	1.00	<div><div></div><div></div><div></div><div></div><div></div></div>

## HDRS MCFL Calibration - MCFL Accumulations

Before (Measured): 19:35:45 19-Jun-2014 Expired by 1 days

Measurement	Unit	Phase	Nominal	Low Limit	Actual	High Limit	<div><div></div><div></div><div></div><div></div><div></div></div>
Main Resistivity	ohm.m	Before	3875	3565	3855	4185	<div><div></div><div></div><div></div><div></div><div></div></div>
Deep Resistivity	ohm.m	Before	3830	3524	3789	4136	<div><div></div><div></div><div></div><div></div><div></div></div>
Shallow Resistivity	ohm.m	Before	3830	3524	3807	4136	<div><div></div><div></div><div></div><div></div><div></div></div>

Company:	Omimex Petroleum Inc	Schlumberger
Well:	Bledsoe 6-28-5-44	
Field:	Ballyneal	
County:	Yuma	
State:	Colorado	
Platform Express		
Caliper		
Cement Volume		