

GAMMA RAY
CERMENT BOND
VCL 18.3-20.3

Filing #
Well
Company
Field
County
State

SOUTHWESTERN PRODUCTION CORP
NICHOLAS #1
WATKINS
WELD
COLO

Location
AP 48 100 6 1991 FEET
SEC 34 TWP 40R R10E 40W
Elevation 5776
Log Measured from
HELLY BURNING
FL Above Firm Datum
K 4.755
D 4.755
GL 4.776

Permit Number
6727203
Run Number
7106
Type of Log
CERMENT BOND
Depth (Feet)
1115
Cement Interval
7115 TO 7237
Type Fluid in Hole
WATER
Salinity, ppm Cl
Sulfuric Acid
Acidity, viscosity
FUEL
Max. Rec. Temp., F
251.8
Sulfuric Acid
Conc. (wt. %)
0.00
Witnessed By
CART. JERRY

ECG Record
15
Size
1/8 IN
Sigsbee
70

ECG Record
15
Size
1/8 IN
Sigsbee
70

ECG Record
15
Size
1/8 IN
Sigsbee
70

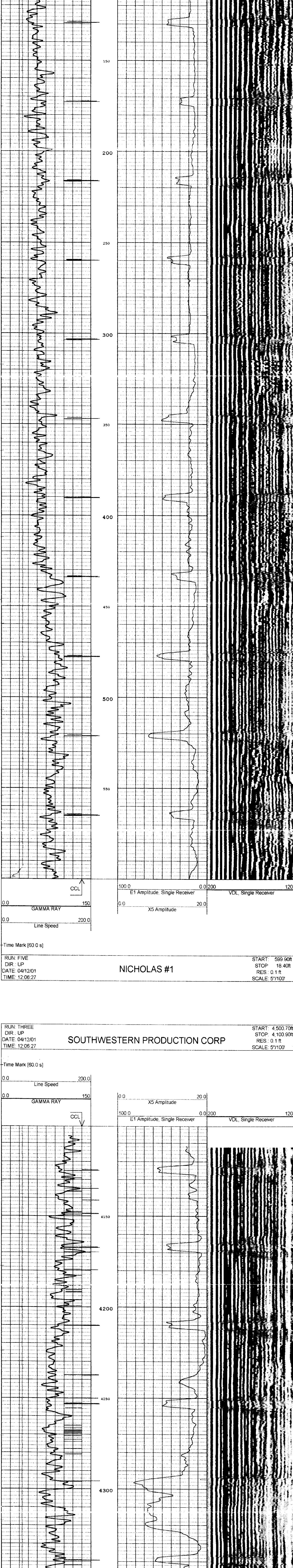
ECG Record
15
Size
1/8 IN
Sigsbee
70

ECG Record
15
Size
1/8 IN
Sigsbee
70

START 569.90ft
STOP 18.40ft
RES 0.1ft
SCALE 57100'

SOUTHWESTERN PRODUCTION CORP

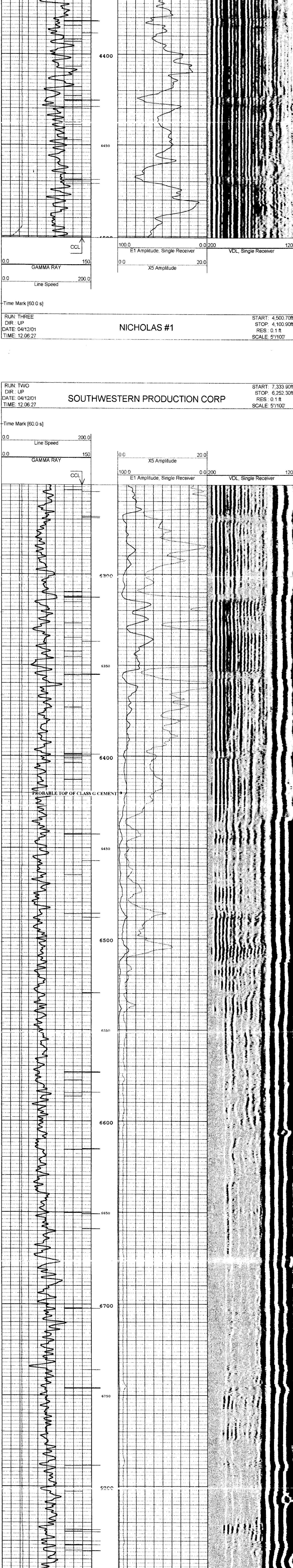
RUN FIVE
DIR UP
DATE 04/12/01
TIME 12:06:27



START 569.90ft
STOP 18.40ft
RES 0.1ft
SCALE 57100'

NICHOLAS #1

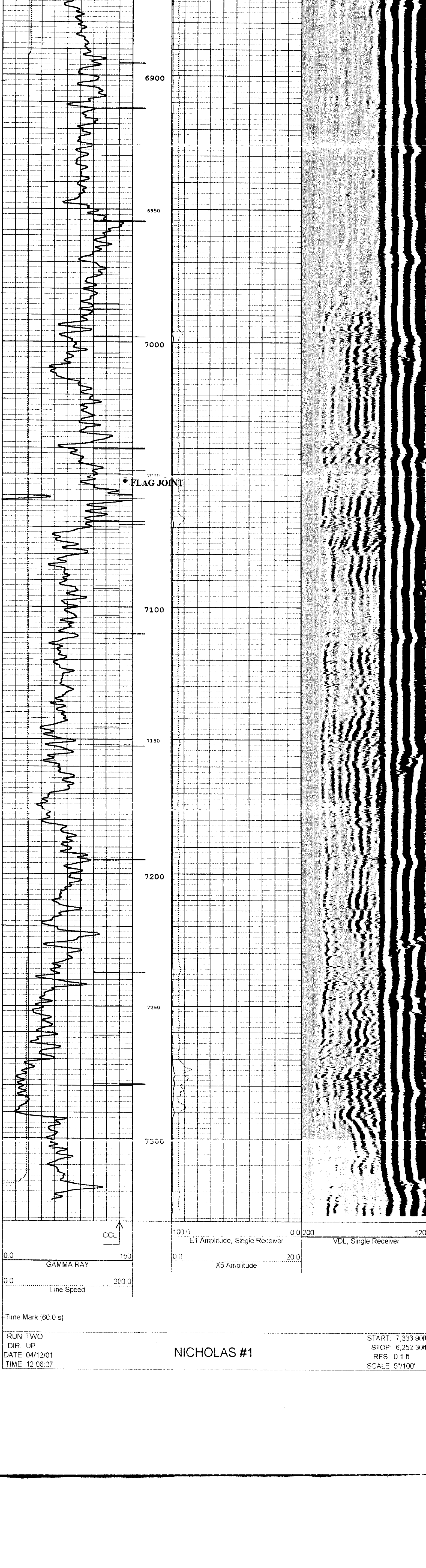
RUN FIVE
DIR UP
DATE 04/12/01
TIME 12:06:27



START 4500.70ft
STOP 4100.90ft
RES 0.1ft
SCALE 57100'

NICHOLAS #1

RUN THREE
DIR UP
DATE 04/12/01
TIME 12:06:27



START 7333.90ft
STOP 6252.30ft
RES 0.1ft
SCALE 57100'

NICHOLAS #1

RUN TWO
DIR UP
DATE 04/12/01
TIME 12:06:27

START 7333.90ft
STOP 6252.30ft
RES 0.1ft
SCALE 57100'

NICHOLAS #1

RUN TWO
DIR UP
DATE 04/12/01
TIME 12:06:27

START 7333.90ft
STOP 6252.30ft
RES 0.1ft
SCALE 57100'

NICHOLAS #1

RUN TWO
DIR UP
DATE 04/12/01
TIME 12:06:27

START 7333.90ft
STOP 6252.30ft
RES 0.1ft
SCALE 57100'

NICHOLAS #1

RUN TWO
DIR UP
DATE 04/12/01
TIME 12:06:27

START 7333.90ft
STOP 6252.30ft
RES 0.1ft
SCALE 57100'

NICHOLAS #1

RUN TWO
DIR UP
DATE 04/12/01
TIME 12:06:27

START 7333.90ft
STOP 6252.30ft
RES 0.1ft
SCALE 57100'

NICHOLAS #1

RUN TWO
DIR UP
DATE 04/12/01
TIME 12:06:27

START 7333.90ft
STOP 6252.30ft
RES 0.1ft
SCALE 57100'

NICHOLAS #1

RUN TWO
DIR UP
DATE 04/12/01
TIME 12:06:27

START 7333.90ft
STOP 6252.30ft
RES 0.1ft
SCALE 57100'

NICHOLAS #1

RUN TWO
DIR UP
DATE 04/12/01
TIME 12:06:27

START 7333.90ft
STOP 6252.30ft
RES 0.1ft
SCALE 57100'

NICHOLAS #1

RUN TWO
DIR UP
DATE 04/12/01
TIME 12:06:27

START 7333.90ft
STOP 6252.30ft
RES 0.1ft
SCALE 57100'

NICHOLAS #1

RUN TWO
DIR UP
DATE 04/12/01
TIME 12:06:27

START 7333.90ft
STOP 6252.30ft
RES 0.1ft
SCALE 57100'

NICHOLAS #1

RUN TWO
DIR UP
DATE 04/12/01
TIME 12:06:27

START 7333.90ft
STOP 6252.30ft
RES 0.1ft
SCALE 57100'

NICHOLAS #1

RUN TWO
DIR UP
DATE 04/12/01
TIME 12:06:27

START 7333.90ft
STOP 6252.30ft
RES 0.1ft
SCALE 57100'

NICHOLAS #1

RUN TWO
DIR UP
DATE 04/12/01
TIME 12:06:27

START 7333.90ft
STOP 6252.30ft
RES 0.1ft
SCALE 57100'

NICHOLAS #1

RUN TWO
DIR UP
DATE 04/12/01
TIME 12:06:27

START 7333.90ft
STOP 6252.30ft
RES 0.1ft
SCALE 57100'

NICHOLAS #1

RUN TWO
DIR UP
DATE 04/12/01
TIME 12:06:27

START 7333.90ft
STOP 6252.30ft
RES 0.1ft
SCALE 57100'

NICHOLAS #1

RUN TWO
DIR UP
DATE 04/12/01
TIME 12:06:27

START 7333.90ft
STOP 6252.30ft
RES 0.1ft
SCALE 57100'

NICHOLAS #1

RUN TWO
DIR UP
DATE 04/12/01
TIME 12:06:27

START 7333.90ft
STOP 6252.30ft
RES 0.1ft
SCALE 57100'

NICHOLAS #1

RUN TWO
DIR UP
DATE 04/12/01
TIME 12:06:27

START 7333.90ft
STOP 6252.30ft
RES 0.1ft
SCALE 57100'

NICHOLAS #1

RUN TWO
DIR UP
DATE 04/12/01
TIME 12:06:27

START 7333.90ft
STOP 6252.30ft
RES 0.1ft
SCALE 57100'

NICHOLAS #1

RUN TWO
DIR UP
DATE 04/12/01
TIME 12:06:27

START 7333.90ft
STOP 6252.30ft
RES 0.1ft
SCALE 57100'

NICHOLAS #1

RUN TWO
DIR UP
DATE 04/12/01
TIME 12:06:27

START 7333.90ft
STOP 6252.30ft
RES 0.1ft
SCALE 57100'

NICHOLAS #1

RUN TWO
DIR UP
DATE 04/12/01
TIME 12:06:27

START 7333.90ft
STOP 6252.30ft
RES 0.1ft
SCALE 57100'

NICHOLAS #1

RUN TWO
DIR UP
DATE 04/12/01
TIME 12:06:27

START 7333.90ft
STOP 6252.30ft
RES 0.1ft
SCALE 57100'

NICHOLAS #1

RUN TWO
DIR UP
DATE 04/12/01
TIME 12:06:27

START 7333.90ft
STOP 6252.30ft
RES 0.1ft
SCALE 57100'

NICHOLAS #1

RUN TWO
DIR UP
DATE 04/12/01
TIME 12:06:27

START 7333.90ft
STOP 6252.30ft
RES 0.1ft
SCALE 57100'

NICHOLAS #1

RUN TWO
DIR UP
DATE 04/12/01
TIME 12:06:27

START 7333.90ft
STOP 6252.30ft
RES 0.1ft
SCALE 57100'

NICHOLAS #1

RUN TWO
DIR UP
DATE 04/12/01
TIME 12:06:27

START 7333.90ft
STOP 6252.30ft
RES 0.1ft
SCALE 57100'

NICHOLAS #1

RUN TWO
DIR UP
DATE 04/12/01
TIME 12:06:27