

PROPOSED LOCATION:
 KODAK SOUTH FD 26-A, 25-202HC,
 25-239HN, 25-279HN, 27-299HN,
 27-259HC, 27-222HN, 26-B, 25-399HN,
 25-362HN, 25-319HN, 25-282HC,
 27-339HN, 27-339HC, 27-379HN
 & 27-382HN

LEGEND:

PROPOSED LOCATION

GREAT WESTERN OIL & GAS COMPANY

KODAK SOUTH FD 26-A, 25-202HC, 25-239HN, 25-279HN,
 27-299HN, 27-259HC, 27-222HN, 26-B, 25-399HN, 25-362HN,
 25-319HN, 25-282HC, 27-339HN, 27-339HC, 27-379HN & 27-382HN
 SECTION 26, T6N, R67W, 6th P.M.
 SE 1/4 SW 1/4

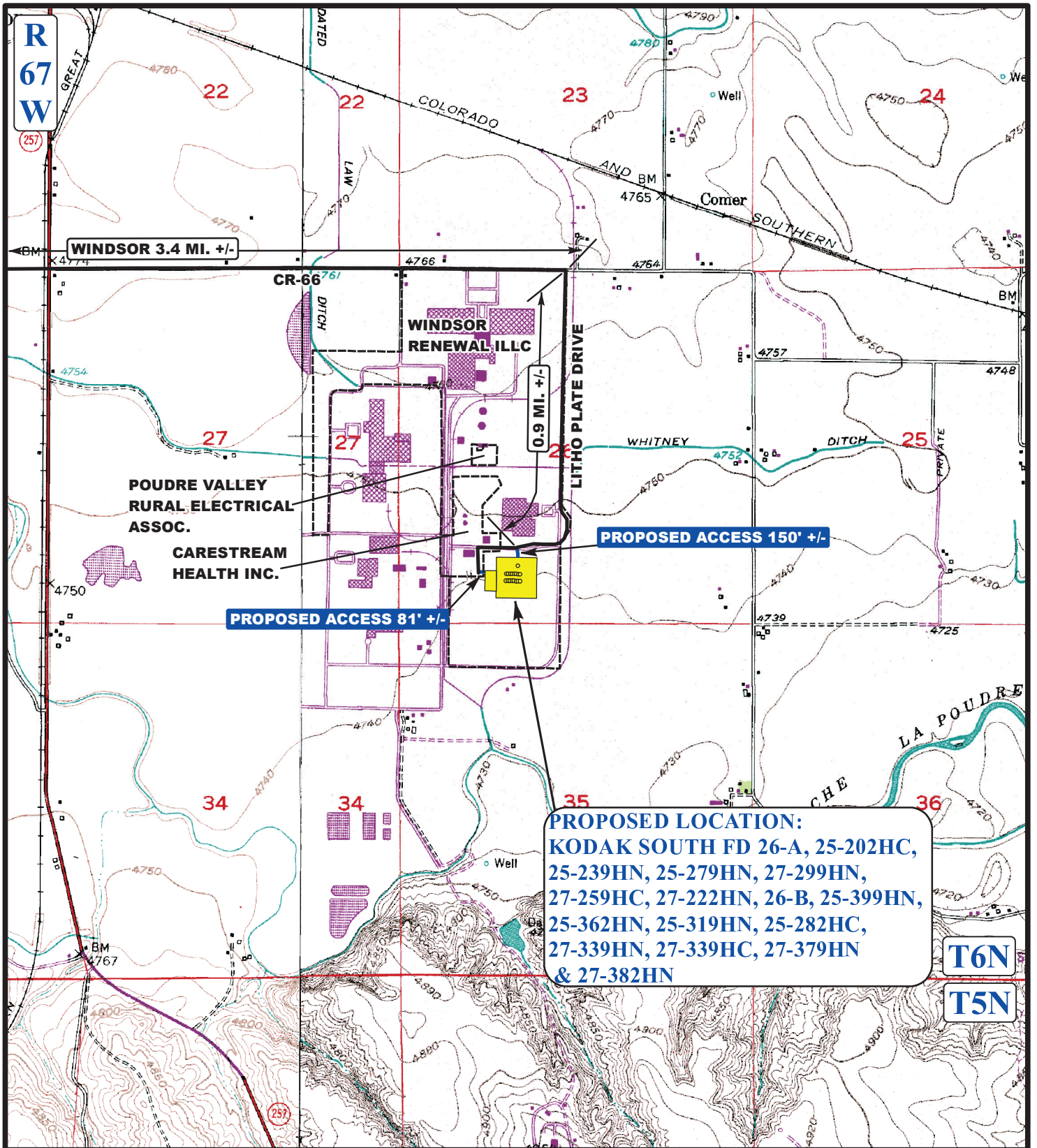


Utah Engineering & Land Surveying
 85 South 200 East Vernal, Utah 84078
 (435) 789-1017 * FAX (435) 789-1813

**ACCESS ROAD
 MAP**
 SCALE: 1:100,000 DRAWN BY: J.L.G.

10 MONTH	28 DAY	13 YEAR
REVISED: 00-00-00		





PROPOSED LOCATION:
 KODAK SOUTH FD 26-A, 25-202HC,
 25-239HN, 25-279HN, 27-299HN,
 27-259HC, 27-222HN, 26-B, 25-399HN,
 25-362HN, 25-319HN, 25-282HC,
 27-339HN, 27-339HC, 27-379HN
 & 27-382HN

LEGEND:

-  EXISTING ROADS
-  PROPOSED ACCESS ROAD

GREAT WESTERN OIL & GAS COMPANY

KODAK SOUTH FD 26-A, 25-202HC, 25-239HN, 25-279HN,
 27-299HN, 27-259HC, 27-222HN, 26-B, 25-399HN, 25-362HN,
 25-319HN, 25-282HC, 27-339HN, 27-339HC, 27-379HN & 27-382HN
 SECTION 26, T6N, R67W, 6th P.M.
 SE 1/4 SW 1/4

U&L S **Utah Engineering & Land Surveying**
 85 South 200 East Vernal, Utah 84078
 (435) 789-1017 * FAX (435) 789-1813



ACCESS ROAD MAP **10 28 13**
 MONTH DAY YEAR
 SCALE: 1"=2000' DRAWN BY: J.L.G. REVISED: 3-25-14 **B TOPO**