



Scale: 5" / 100'  
Measured Depth Log

Well Name GOODMAN POINT #16 ST01

Location SEC:33 TWP:37N,Range:17W,-NWNW

State CO

County MONTEZUMA

Country US

Rig Number AZTEC 507

API Number 05-083-06649-02

AFE # 46685

Spud Date

6/25/2014

Field McELMO DOME

Drilling Completed 7/28/2014

Surface Coordinates LAT:37,425728  
LONG:-108.735143  
638 FNL & 632 FWL

Bottom Hole Coordinates 352 FSL % 2368 FWL  
SEC: 28 , Twp:37N Rng: 17W

Ground Elevation 6734'

K.B. Elevation 6753'

Logged Interval 7406' To 7708.9'

Total Depth 7708.9'

Formation LEADVILLE LIMESTONE DOLOMITE

Type of Drilling Fluid FRESH WATER/BRINE

### Other Symbols

<b>Oil Show</b>	MOLDIC	FAULT	WIRELINE TESTED - LEFT	E EARTHY
DEAD	ORGANIC	FORMATION TOP	WIRELINE TESTED - RT	FINELYXLN
EVEN	PINPOINT	GAS SHOW	MN DEPTH	GRAINSTONE
QUESTIONABLE	VUGGY	NORMAL FAULT	Rounding	L LITHOGRAPHIC
SPOTTED STAINING	<b>Engineering</b>	OIL SHOW	ANGULAR	MICROXLN
<b>Porosity</b>	BIT	OVERTURNED STRATA	ROUNDED	MUDSTONE
E EARTHY	CONNECTION (LEFT)	REVERSE FAULT	SUBANG	PACKSTONE
FENESTRAL	CONNECTION (RIGHT)	SIDEWALL CORE (LEFT)	SUBRND	WACKSTONE
FRACTURE	CONNECTION GAS	SIDEWALL CORE (RIGHT)	<b>Textures</b>	<b>Sorting</b>
INTERCRYSTALLINE	CORE - LOST	SLIDE	BOUNDSTONE	MODERATE
INTEROOLITIC	CORE - RECOVERED	SURVEY	CHALKY	POOR
	DST INTERVAL	TRIP GAS	CRYPTOXLN	WELL

### Zone Color Coding

Oil	Condensate	Gas
Note	Core	Pressure
Error	Water	Seal

### Accessories

<b>Fossils</b>	FOSSIL	ARGILLACEOUS	GLAUCONITE
	GASTROPOD	ARGILLITE GRAIN	GYPSIFEROUS

### Stringer

- ALGAE
- AMPHIPORA
- BELEMNITE
- BIOCLASTIC
- BRACHIOPOD
- BRYOZOA
- CEPHALOPOD
- CORAL
- CRINOID
- ECHINOID
- FISH
- FORAMINIFERA

- OOLITE
- OSTRACOD
- PELECYPOD
- PELLET
- PISOLITE
- PLANT REMAINS
- PLANT SPORES
- SCAPHOPOD
- STROMATOPOROID

**Minerals**

- ANHYDRITIC

- BENTONITE
- BITUMENOUS SUBSTANCE
- BRECCIA FRAGMENTS
- CALCAREOUS
- CARBONACEOUS FLAKES
- CHTDK
- CHTLT
- COAL - THIN BEDS
- DOLOMITIC
- FELDSPAR
- FERRUGINOUS PELLET
- FERRUGINOUS

- HEAVY MINERAL
- KAOLIN
- MARLSTONE
- MINERAL CRYSTALS
- NODULES
- PHOSPHATE PELLETS
- PYRITE
- SALT CAST
- SANDY
- SILICEOUS
- SILTY
- TUFFACEOUS

- ANHYDRITE STRINGER
- BENTONITE STRINGER
- COAL STRINGER
- DOLOMITE STRINGER
- GYPSUM STRINGER
- LIMESTONE STRINGER
- MARLSTONE (CALC) STRG
- MARLSTONE (DOL) STRG
- SANDSTONE STRINGER
- SHALE STRINGER
- SILTSTONE STRINGER

**Operator**

**Company** KINDER MORGAN

**Address** 17801 Hwy 491  
CORTEZ,COLORADO 81321

**Rock Types**

- UNKNOWN
- ANHYDRITE
- GYPSUM
- SALT
- SIDERITE or LIMONITE
- LIMESTONE

- DOLOMITE
- CHERT
- COAL
- MARLSTONE
- CLAYSTONE
- SHALE

- SHALE GRAY
- SHALE COLORED
- SILTSTONE
- SANDSTONE
- CONGLOMERATE
- BRECCIA

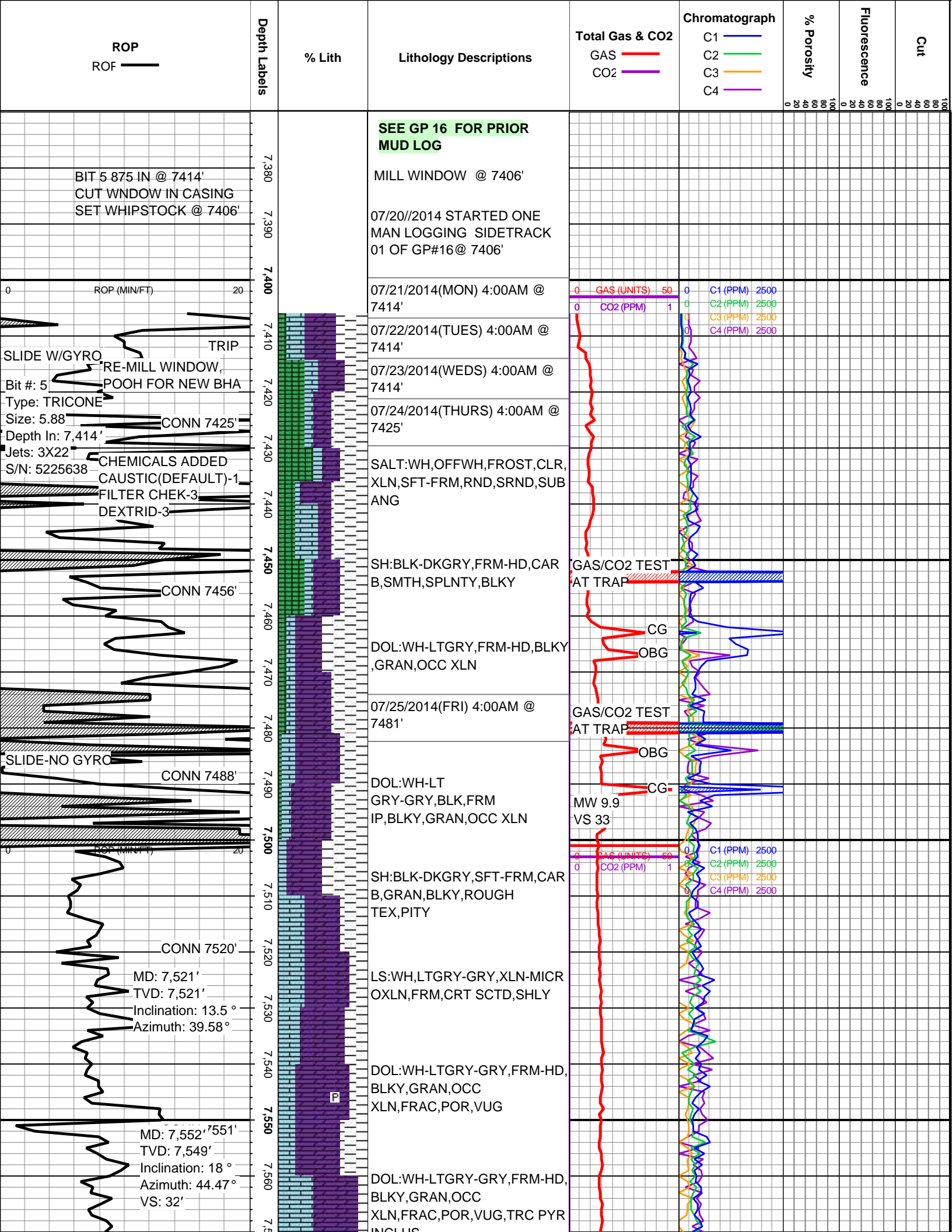
- TILL
- BENTONITE
- TUFF
- IGNEOUS
- METAMORPHIC

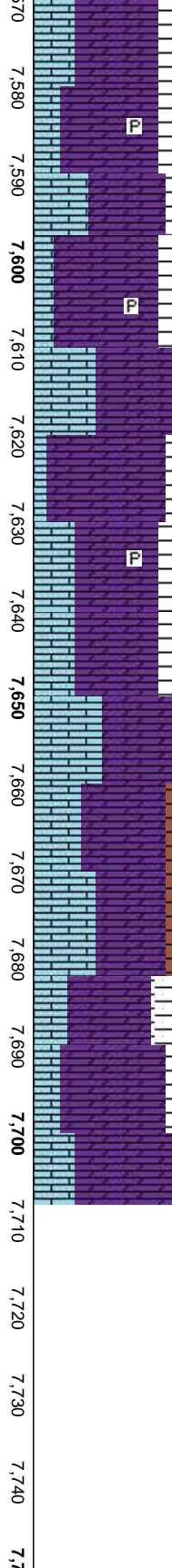
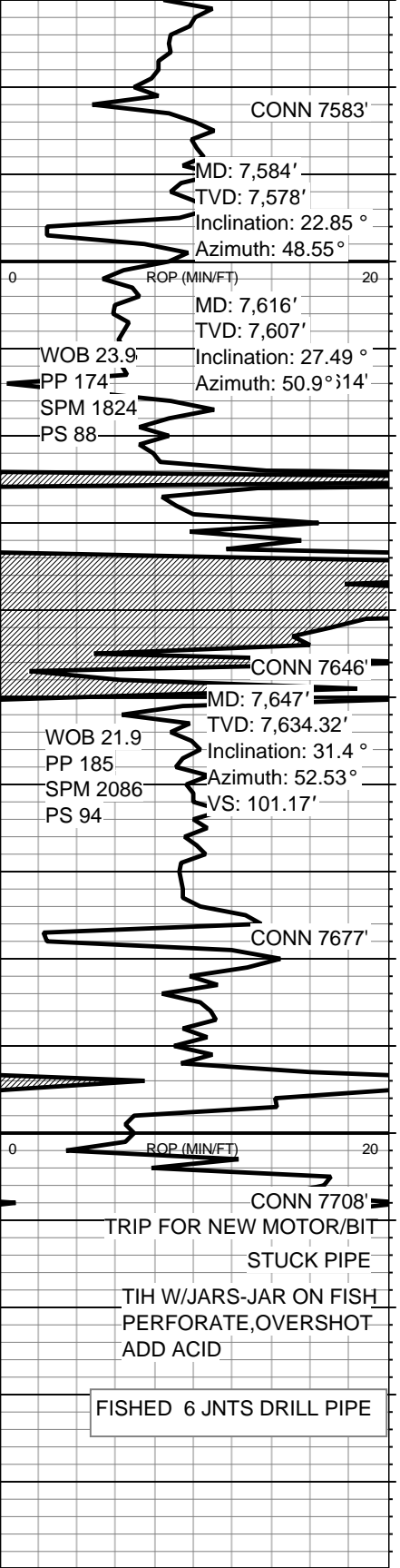
**Geologist**

**Name** JAMES ROARK

**Company** ABOVE ENTERPRISE

**Address** 510 Old Lubbock Hwy  
Snyder, Texas 79549





INCLUS  
 LS:WH,LTGRY-GRY,XLN-MICR  
 OXLN,FRM,SMOOTH RTEX,VIT  
 07/26/2014(SAT) 4:00AM @  
 7597'  
 P  
 DOL:WH-LTGRY-GRY,FRM-HD,  
 BLKY,GRAN,SPLNTY,FRAC,PO  
 R,VUG  
 2% DK DOL  
 DOL:WH-LTGRY-GRY,FRM-HD,  
 BLKY,GRAN,SPLNTY,SUCROSI  
 C,FRAC,POR,VUG  
 0% DK DOL  
 LS:WH,LTGRY,XLN-MICROXLN  
 ,FRM,SMOOTH,VIT,TRC PALE  
 RED SH SCTD  
 07/27/2014(SUN) 4:00AM @  
 7682'  
 DOL:WH-LTGRY,FRM-HD,BLKY  
 ,GRAN,SPLNTY,SUCROSIC,FR  
 AC,POR,VUG,TRC SH SCTD  
 07/28/2014(MON) THRU  
 08-05-201(TUES) 4:00AM @  
 7708'  
 STOP FISHING---RUN  
 FIBERGLASS  
 LINER/CEMENT,PLAN TO CUT  
 NEW WINDOW ABOVE STUCK  
 MWD TOOL/BIT DEPTH OF  
 7708'  
 SEE NEXT LOG GP#16 ST02

