

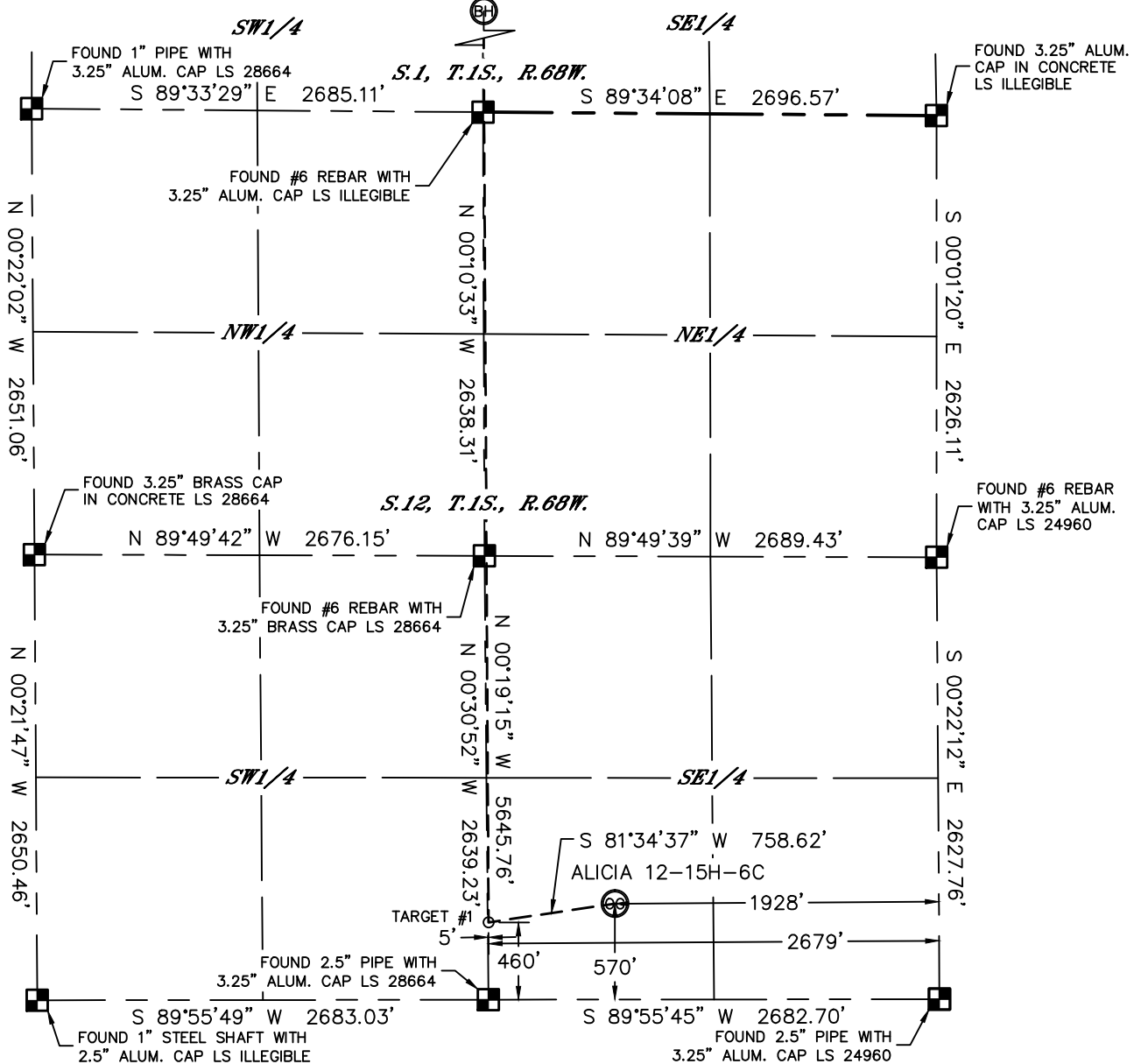


Lat40°, Inc. 1635 Foxtrail Drive, Suite 325 Loveland, CO 970-776-3321

WELL LOCATION CERTIFICATE

THIS MAP DOES NOT REPRESENT A BOUNDARY SURVEY

SECTION: 12
TOWNSHIP: 1S
RANGE: 68W



In accordance with a request from Clay Duke with MENDELL FINISTERRE II, LLC Lat40°, Inc. has determined the surface location of the ALICIA 12-15H-6C to be 570' from the SOUTH line and 1928' from the EAST line as measured at right angles from the section lines of Section 12, Township 1 South, Range 68 West, and the bottom hole to be 828' from the SOUTH line and 2682' from the EAST line as measured at right angles from the section lines of Section 1, Township 1 South, Range 68 West of the Sixth Principal Meridian, County of Adams, State of Colorado.

I hereby state that this Well Location Certificate was prepared by me, or under my direct supervision, that the fieldwork was completed on 8/7/2014, for and on behalf of MENDELL FINISTERRE II, LLC. That this is not a Land Survey Plat or an Improvement Survey Plat, and that it is not to be relied upon for establishment of fence, building, or other future improvement lines.

SURFACE LOCATION

LAT: 39.97353°N
LONG: 104.94716°W
PDOP: 1.5
ELEV: 5150'
1/4,1/4: SW1/4SE1/4

BOTTOM HOLE

LAT: 39.98874°N
LONG: 104.94982°W

TARGET #1

LAT: 39.97324°N
LONG: 104.94984°W

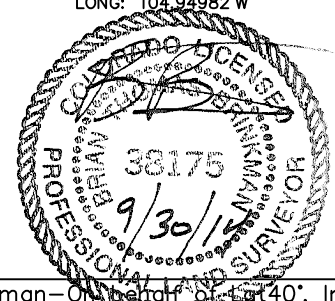
LEGEND

- = ALIQUOT MONUMENT AS DESCRIBED
- = CALCULATED POSITION

Brian T. Brinkman—On behalf of Lat40°, Inc.

Colorado Licensed Professional
Land Surveyor No. 38175

DATE: 9/30/2014
PROJECT#: 2013026



NOTE:

- 1) Bearings shown are Grid Bearings of the Colorado State Plane Coordinate System, North Zone, North American Datum 1983/2007. The lineal dimensions as contained herein are based upon the "U.S. Survey Foot."
- 2) Ground elevations are based on an observed GPS elevation (NAVD 1988 DATUM).
- 3) IMPROVEMENTS: See LOCATION DRAWING for all visible improvements within 400' of disturbed area.
- 4) SURFACE USE: EX. WELL LOCATION
- 5) INSTRUMENT OPERATOR: BRIAN ROTTINGHAUS
- NEAREST CULTURAL ITEMS:
BUILDING: ±643' SW
BUILDING UNIT: ±657' SE
HIGH OCCUPANCY BUILDING UNIT: ±1903' SW
DESIGNATED OUTSIDE ACTIVITY AREA: 5280'+
PUBLIC ROAD: ±589' S (MADISON CT.)
ABOVEGROUND UTILITY: ±1210' SE
RAILROAD: ±237' NW
PROPERTY LINE: ±163' NW

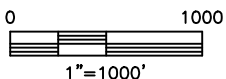
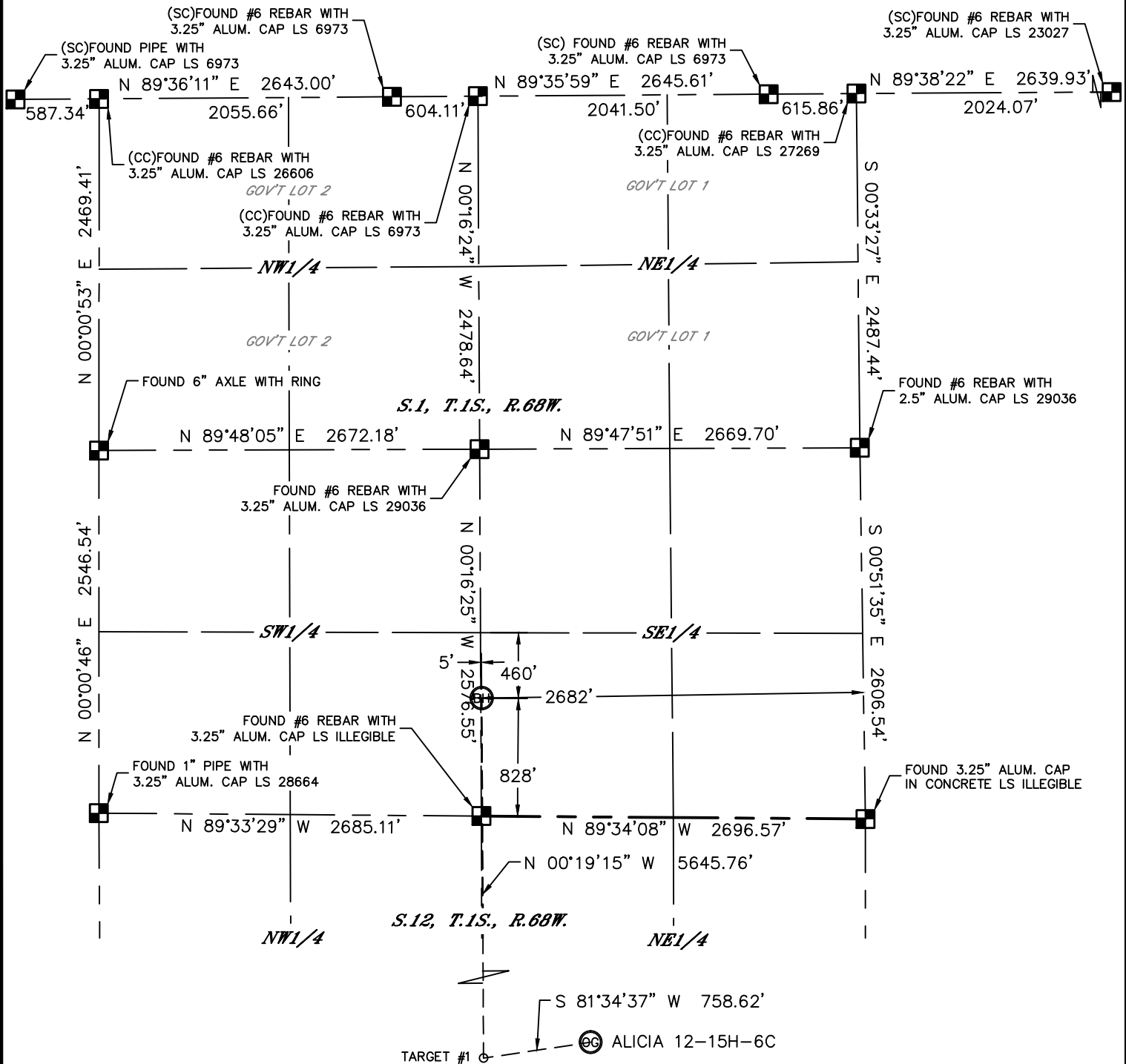


Lat40°, Inc. 1635 Foxtrail Drive, Suite 325 Loveland, CO 970-776-3321

WELL LOCATION CERTIFICATE

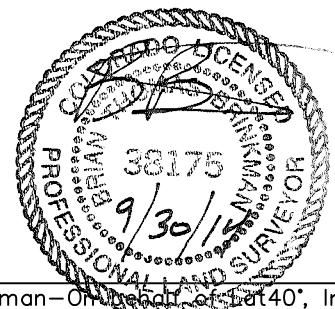
THIS MAP DOES NOT REPRESENT A BOUNDARY SURVEY

SECTION: 12
TOWNSHIP: 1S
RANGE: 68W



LEGEND

- = ALIQUOT MONUMENT AS DESCRIBED
- = CALCULATED POSITION



Brian T. Brinkman—On behalf of Lat40°, Inc.
Colorado Licensed Professional
Land Surveyor No. 38175
DATE: 9/30/2014
PROJECT#: 2013026

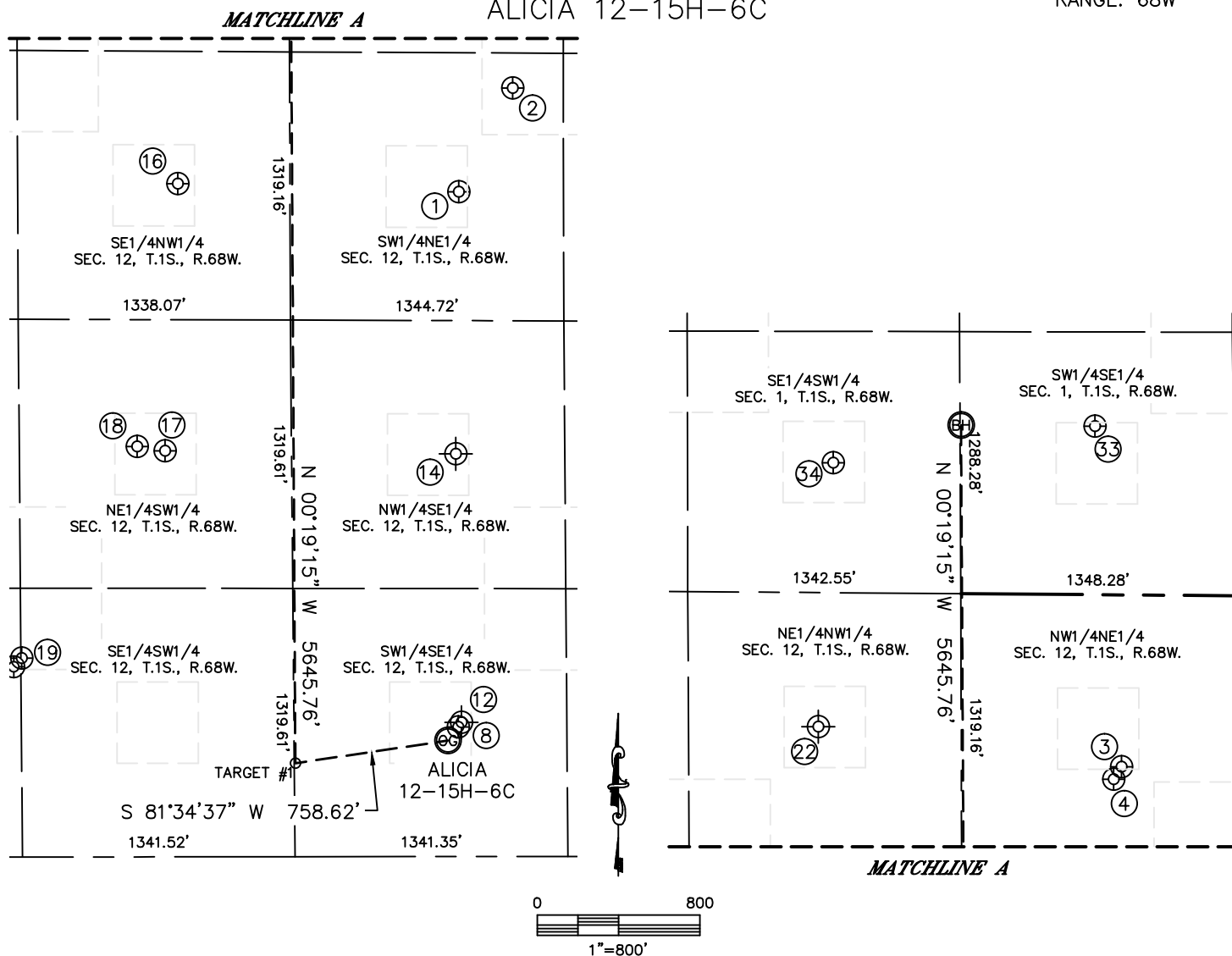


Lat40°, Inc. 1635 Foxtrail Drive, Suite 325 Loveland, CO 970-776-3321

SITE SKETCH

ALICIA 12-15H-6C

SECTION: 12
TOWNSHIP: 1S
RANGE: 68W



WELL NO.	WELL NAME	SHL FOOTAGE				SHL LAT°	SHL LONG°	PDOP	ELEV (FT.)	1/4/1/4
1	CROFF 12-5	2002	FNL	1861	FEL	39.98094	-104.94691	2.2	5082	SWNE
2	LENART S-1	1489	FNL	1596	FEL	39.98233	-104.94595	3.7	5083	SWNE
3	TUDEX REINHOLT NC4	846	FNL	1907	FEL	39.98411	-104.94705	3.6	5074	NWNE
4	REINHOLT 12-6	908	FNL	1945	FEL	39.98394	-104.94719	1.6	5076	NWNE
8	RUBY 2	637	FSL	1876	FEL	39.97371	-104.94697	1.7	5150	SWSE
12	MALLO 1	660	FSL	1860	FEL	39.97379	-104.94683	NA	5144	SWSE
14	BELLIGER 12-7	1980	FSL	1880	FEL	39.97742	-104.94687	NA	5115	NWSE
16	CUNDALL 6-12	1972	FNL	2126	FWL	39.98107	-104.95184	2.4	5082	SENW
17	NORTH YORK 11-12	1997	FSL	2056	FWL	39.97747	-104.95209	1.7	5108	NESW
18	NORTH YORK 1	2018	FSL	1919	FWL	39.97753	-104.95258	1.8	5107	NESW
19	NORTH YORK 14-12	978	FSL	1344	FWL	39.97468	-104.95463	2.0	5118	SESW
22	CUNDALL 1	660	FNL	1980	FWL	39.98467	-104.95228	NA	5080	NENW
33	MORRISON 15-1	828	FSL	2024	FEL	39.98871	-104.94748	1.9	5069	SWSE
34	MORRISON 24-1 3	639	FSL	2057	FWL	39.98824	-104.95207	1.7	5087	SESW

NOTE: THE ABANDONED WELL DATA SHOWN IN RED ABOVE WAS OBTAINED FROM COGCC SCOUT CARDS.

DATE: 9/30/2014
PROJECT#: 2013026