



7535 Hilltop Circle  
Denver, CO 80221  
[www.petro-fs.com](http://www.petro-fs.com)

October 23, 2014

Mr. Matt Lepore, Director  
Colorado Oil and Gas Conservation Commission  
1120 Lincoln Street, Suite 801  
Denver, Colorado 80203

**RE: COGCC Rule 318A.e.: Proposed Wellbore Spacing Unit  
Sherley C-4-9HN: NWNW Section 4, Township 5 North, Range 65 West  
Weld County, Colorado**

Dear Mr. Lepore:

Bayswater Exploration & Production, LLC (Bayswater) is planning to drill the above referenced well in accordance with the provisions set out in COGCC Rule 318A.e. Bayswater's proposed wellbore spacing unit consists of:

W½W½ of Section 4 and Section 9, Township 5 North, Range 65 West  
Containing 320 acres more or less

Bayswater is not the only owner within the proposed wellbore spacing unit and has provided notice to the remaining owners within this spacing unit, as required by COGCC Rule 318A.e.(6). Copies of the required notification letters are on file at Bayswater's office. The required thirty (30) day notice period has elapsed absent the receipt by Bayswater of any objection to their proposal by the owners within the proposed spacing unit for the subject well.

Enclosed is the Proposed Spacing Unit Plat to assist in your review and approval of Bayswater's proposed Application for Permit to Drill (APD) for the Sherley C-4-9HN well. Many thanks for your attention to this matter.

Respectfully,



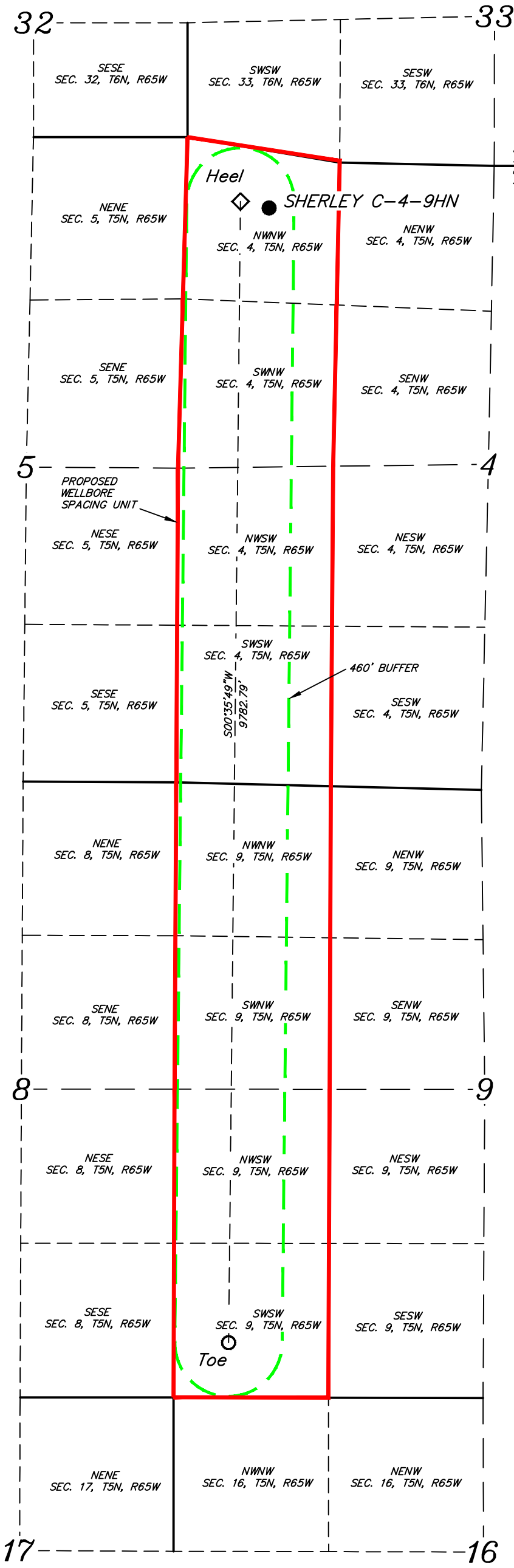
Jennifer Grosshans  
Regulatory Analyst  
Agent for Bayswater Exploration & Production, LLC

:jg

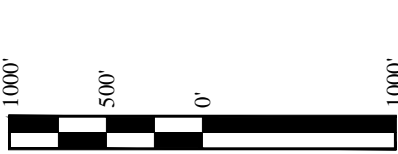
Enclosure: Proposed Spacing Unit Plat

*We are what we repeatedly do. Excellence, then, is not an act, but a habit.*

*-Aristotle*



NAD 83 (TOE)	NAD 83 (HEEL)	NAD 83 (SURFACE LOCATION)
LATITUDE = 40°24'27.91" (40.407753)	LATITUDE = 40°26'04.58" (40.434606)	LATITUDE = 40°26'04.02" (40.434450)
LONGITUDE = 104°40'34.61" (104.676281)	LONGITUDE = 104°40'33.70" (104.676028)	LONGITUDE = 104°40'30.53" (104.675147)
NAD 27 (TOE)	NAD 27 (HEEL)	NAD 27 (SURFACE LOCATION)
LATITUDE = 40°24'27.98" (40.407772)	LATITUDE = 40°26'04.65" (40.434625)	LATITUDE = 40°26'04.08" (40.434467)
LONGITUDE = 104°40'32.74" (104.675761)	LONGITUDE = 104°40'31.83" (104.675508)	LONGITUDE = 104°40'28.66" (104.674628)



- LEGEND:**
- = PROPOSED WELLHEAD.
  - ◆ = HEEL.
  - = TOE.

**BASIS OF BEARINGS**  
BASIS OF BEARINGS IS A G.P.S. OBSERVATION

**BAYSWATER EXPLORATION  
& PRODUCTION, LLC**  
**SHERLEY C-4-9HN**  
**NW 1/4 NW 1/4, SECTION 4, T5N, R65W, 6th P.M.**  
**486' FNL 716' FWL**  
**WELD COUNTY, COLORADO**



**UELS, LLC**  
Corporate Office \* 85 South 200 East  
Vernal, UT 84078 \* (435) 789-1017



SURVEYED BY: DALLAS NEILSEN, C.J.	DATE: 08-08-14
DRAWN BY: J.W.	DATE DRAWN: 08-21-14
SCALE: 1" = 1000'	REVISED: 09-29-14
<b>WELLBORE SPACING UNIT</b>	