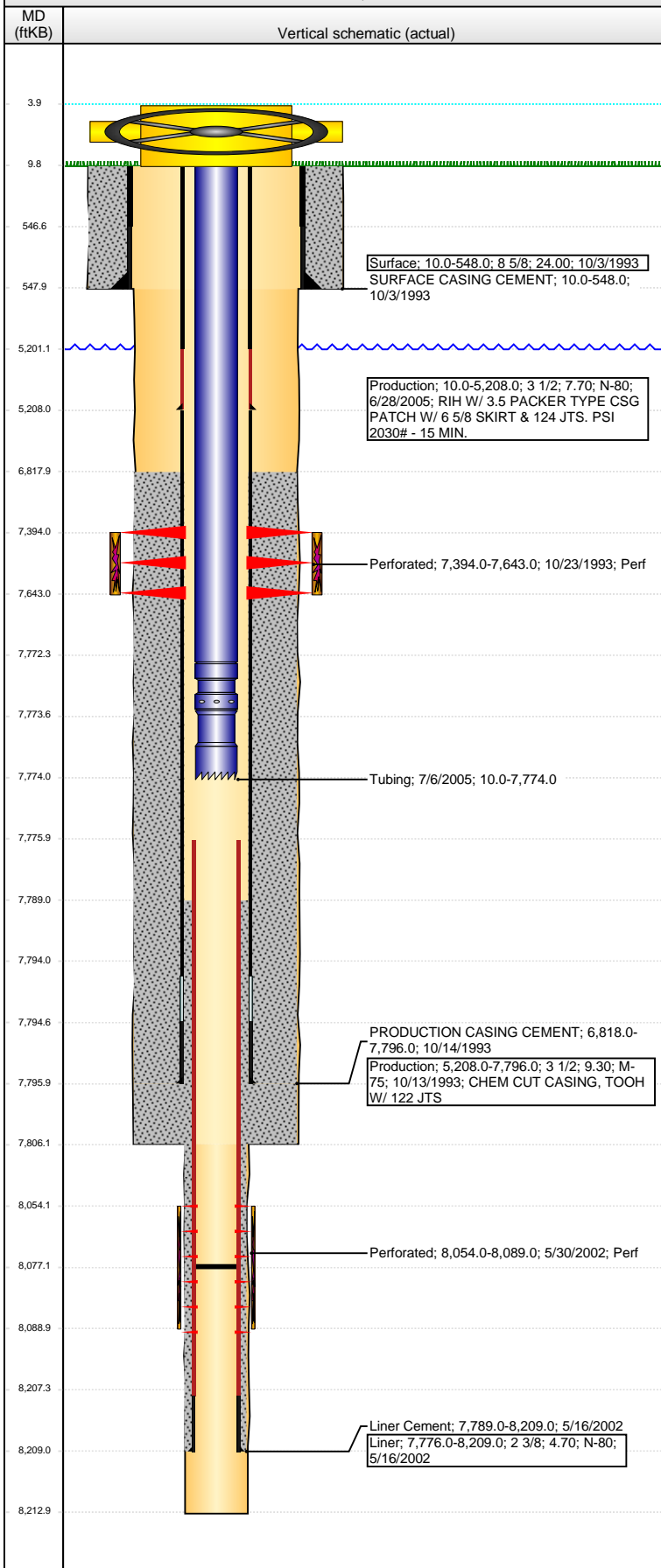


# Wellbore Schematic Input Report

**Well Name: DODD MB33-09**

VERTICAL - ORIGINAL HOLE, 11/5/2014 7:21:18 AM



## Well Header

API	Business Unit	District	Well Config
05-013-06426	DJ BASIN	15	VERTICAL
Original KB Elevation (ft)	KB - GL / MSL (ftKB)	Spud Date	P & A Date
5,158.00	10.00	10/2/1993	

Comment  
csg patch @ 5208 6/05

TD DISCREPANCY FOR DEEPENING: DRL RPT & CBL = 8213, ST COMP RPT = 8209

Directions To Well

## Congressional Location

Quarter 1	Quarter 2	Quarter 3	Quarter 4	Section	Township	Twship N...	Range	Rng E/W Dir
		NE	SE	33	2	N	69	W

## Bottom Hole Location

North-South Distance (ft)	From N or S Line	East-West Distance (ft)	From E or W Line

## Plug Back Total Depths

Date	Depth (ftKB)	Method	Com
10/13/1993	7,763.0	CASING TALLY	COLLAR W/ BAFFLE
10/22/1993	7,763.0	CASED HOLE LOG	
5/15/2002	8,198.0		
5/29/2002	8,077.0	CASED HOLE LOG	

## Wellbore Sections

Section Des	Size (in)	Act Top, MD (ftKB)	Act Btm, MD (ftKB)
SURFACE	12 1/4	10.0	548.0
PRODUCTION	7 7/8	548.0	7,806.0
LINER	2 7/8	7,806.0	8,213.0

## Zone Statuses

Zone Name	Status Date	Status	Job
CODL	11/30/1993	PR	DRILLING/COMPLETION - ORIGINAL, 10/2/1993 00:00
JSND	6/21/2002	PR	DEEPENING, 5/9/2002 00:00

## Casing Strings

### Surface, 548.0ftKB

Casing Description	Run Date	OD (in)	Wt/Len (l...)	Grade	Top, MD (ft...)	MD (ftKB)
Surface	10/3/1993	8 5/8	24.00		10.0	548.0

### Production, 5,208.0ftKB

Casing Description	Run Date	OD (in)	Wt/Len (l...)	Grade	Top, MD (ft...)	MD (ftKB)
Production	6/28/2005	3 1/2	7.70	N-80	10.0	5,208.0

### Production, 7,796.0ftKB

Casing Description	Run Date	OD (in)	Wt/Len (l...)	Grade	Top, MD (ft...)	MD (ftKB)
Production	10/13/1993	3 1/2	9.30	M-75	10.0	7,796.0

### Liner, 8,209.0ftKB

Casing Description	Run Date	OD (in)	Wt/Len (l...)	Grade	Top, MD (ft...)	MD (ftKB)
Liner	5/16/2002	2 3/8	4.70	N-80	7,776.0	8,209.0

## Cement

Description	Top Depth (ftKB)	Bottom Depth (ftKB)
SURFACE CASING CEMENT	10.0	548.0
Description	Top Depth (ftKB)	Bottom Depth (ftKB)
PRODUCTION CASING CEMENT	6,818.0	7,796.0
Description	Top Depth (ftKB)	Bottom Depth (ftKB)
Liner Cement	7,789.0	8,209.0

## Tubing Components

Item Des	OD (in)	Wt (lb/ft)	Grade	Jts	Len (ft)	Btm (ftKB)	Btm (TVD) (ftKB)
Tubing	2 1/16	3.25	J-55	240	7,762.46	7,772.5	
Pump Seating Nipple	2 1/16				1.04	7,773.5	
Notched collar	2 1/16				0.50	7,774.0	

## Perforation Data

Zone	Bnch/St g	Entered Shot Total	Top (ftKB)	Btm (ftKB)	Date
CODL, ORIGINAL HOLE		14	7,394.00	7,643.00	10/23/1993
JSND, ORIGINAL HOLE		60	8,054.00	8,089.00	5/30/2002

**Well Name: DODD MB33-09**

VERTICAL - ORIGINAL HOLE, 11/5/2014 7:21:20 AM

## Stimulations & Treatments

Date	Zone	Primary Job Type
10/27/1993	CODL, ORIGINAL HOLE	
Technical Result	Tech Result Details	Tech Result Note
Comment		
Date	Zone	Primary Job Type
6/2/2002	JSND, ORIGINAL HOLE	
Technical Result	Tech Result Details	Tech Result Note
Comment		
Date	Zone	Primary Job Type
6/6/2002	JSND, ORIGINAL HOLE	
Technical Result	Tech Result Details	Tech Result Note
Comment		
*** SATURN I 30 *** J-SAND, 2 3/8" Deepening *** 450,000 LBS 20/40 Sand *** Sodium Bicarbonate pumped in pad @ 5.0 ppt *** MIRU BJ Services to 2 3/8" Tubing. The J-SAND was Frac'd via 2 3/8" Tubing & Liner from 8,054' - 8,089'. Perf		

## Other In Hole

Run Date	Des	OD (in)	Top (ftKB)	Btm (ftKB)

## Logs

Date	Type	Top, MD (ftKB)	Btm, MD (ftKB)
10/13/1993	COMPENSATED DENSITY	4,097.0	7,761.0
10/13/1993	DIFL/DENS/GR/GRD/CAL	490.0	7,789.0
10/22/1993	CEMENT BOND	6,700.0	7,763.0
5/16/2002	CALIPER	7,300.0	8,211.0
5/29/2002	CEMENT BOND	7,576.0	8,077.0

