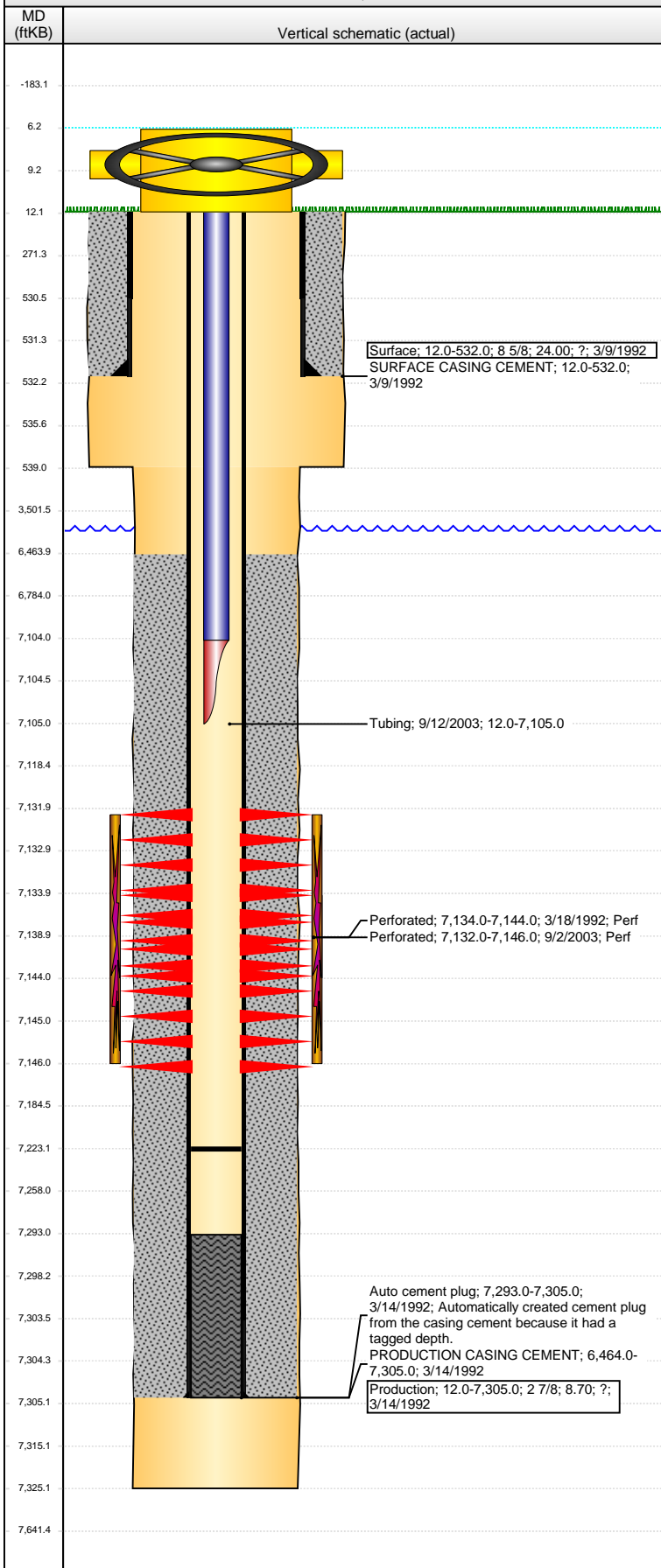


**Well Name: MOSER H34-07**

VERTICAL - ORIGINAL HOLE, 11/5/2014 9:48:32 AM



## Well Header

API 05-123-15452	Business Unit DJ BASIN	District 15	Well Config VERTICAL
Original KB Elevation (ft) 4,841.00	KB - GL / MSL (ftKB) 12.00	Spud Date 3/8/1992	P & A Date
Comment			

## Directions To Well

## Congressional Location

Quarter 1	Quarter 2	Quarter 3	Quarter 4	Section	Township	Twnshp N...	Range	Rng E/W Dir
		SW	NE	34	3	N	65	W

## Bottom Hole Location

North-South Distance (ft)	From N or S Line	East-West Distance (ft)	From E or W Line

## Plug Back Total Depths

Date	Depth (ftKB)	Method	Com
3/29/1994	7,117.0	TAG	CLEAN OUT
3/18/1995	7,293.0	CASED HOLE LOG	DEPTH LOGGER ON CBL
9/12/2003	7,223.0	TAG	C/O LND TBG

## Wellbore Sections

Section Des	Size (in)	Act Top, MD (ftKB)	Act Btm, MD (ftKB)
SURFACE	12 1/4	12.0	539.0
PRODUCTION	7 7/8	539.0	7,325.0

## Zone Statuses

Zone Name	Status Date	Status	Job
CODELL	4/23/1992	PR	DRILLING/COMPLETION - ORIGINAL, 3/8/1992 00:00

## Casing Strings

### Surface, 532.0ftKB

Casing Description	Run Date	OD (in)	Wt/Len (l...)	Grade	Top, MD (ft...)	MD (ftKB)
Surface	3/9/1992	8 5/8	24.00	?	12.0	532.0

### Production, 7,305.0ftKB

Casing Description	Run Date	OD (in)	Wt/Len (l...)	Grade	Top, MD (ft...)	MD (ftKB)
Production	3/14/1992	2 7/8	8.70	?	12.0	7,305.0

## Cement

Description	Top Depth (ftKB)	Bottom Depth (ftKB)
SURFACE CASING CEMENT	12.0	532.0
Description	Top Depth (ftKB)	Bottom Depth (ftKB)
PRODUCTION CASING CEMENT	6,464.0	7,305.0

## Tubing Components

Item Des	OD (in)	Wt (lb/ft)	Grade	Jts	Len (ft)	Btm (ftKB)	Btm (TVD) (ftKB)
Poly-Tubing	1 1/4	2.33	?	220	7,092.00	7,104.0	
Mule Shoe Tubing Joint	1 1/4				1.00	7,105.0	

## Perforation Data

Zone	Bnch/St g	Entered Shot Total	Top (ftKB)	Btm (ftKB)	Date
CODELL, ORIGINAL HOLE		56	7,132.00	7,146.00	9/2/2003
CODELL, ORIGINAL HOLE		40	7,134.00	7,144.00	3/18/1992

## Stimulations & Treatments

Date	Zone	Primary Job Type
3/19/1992	CODELL, ORIGINAL HOLE	DRILLING/COMPLETION - ORIGINAL
Technical Result		Tech Result Details
		Tech Result Note

## Comment

Date	Zone	Primary Job Type
9/11/2003	CODELL, ORIGINAL HOLE	RE-FRAC
Technical Result		Tech Result Details
		Tech Result Note

## Comment

## Other In Hole

Run Date	Des	OD (in)	Top (ftKB)	Btm (ftKB)

## Logs

Date	Type	Top, MD (ftKB)	Btm, MD (ftKB)
3/13/1992	COMPENSATED DENSITY	6,840.0	7,060.0
3/13/1992	INDUCTION	6,840.0	7,060.0

**Well Name: MOSER H34-07**

VERTICAL - ORIGINAL HOLE, 11/5/2014 9:48:35 AM

## Logs

