



Kerr-McGee Oil & Gas Onshore LP

A subsidiary of Anadarko Petroleum Corporation

1099 18th Street
Denver, CO 80202
720-929-6000

October 30, 2014

Department of Natural Resources
Oil and Gas Conservation Commission
The Chancery Building
1120 Lincoln St., Suite 801
Denver, CO 80203

Re: **30 Day Certification Letter - 318A.e**
GREEN 2N-8HZ
Township 1N North, Range 65 West, Section 8: NWNW
Unit Spacing: SEC. 5: SWSW; SEC. 8: W2W2; SEC. 17: NWNW
Weld County, Colorado

Ladies/Gentlemen:

Kerr McGee Oil and Gas Onshore LP ("KMG") hereby certifies to the Director that KMG owns one-hundred percent (100%) of the mineral rights in the proposed spacing unit. Therefore, KMG respectfully requests the Director to approve the boundary well.

If you have any questions or issues regarding this permit, please contact Cheryl Light at (720) 929-6461.

Very truly yours,

KERR-McGEE OIL AND GAS ONSHORE LP

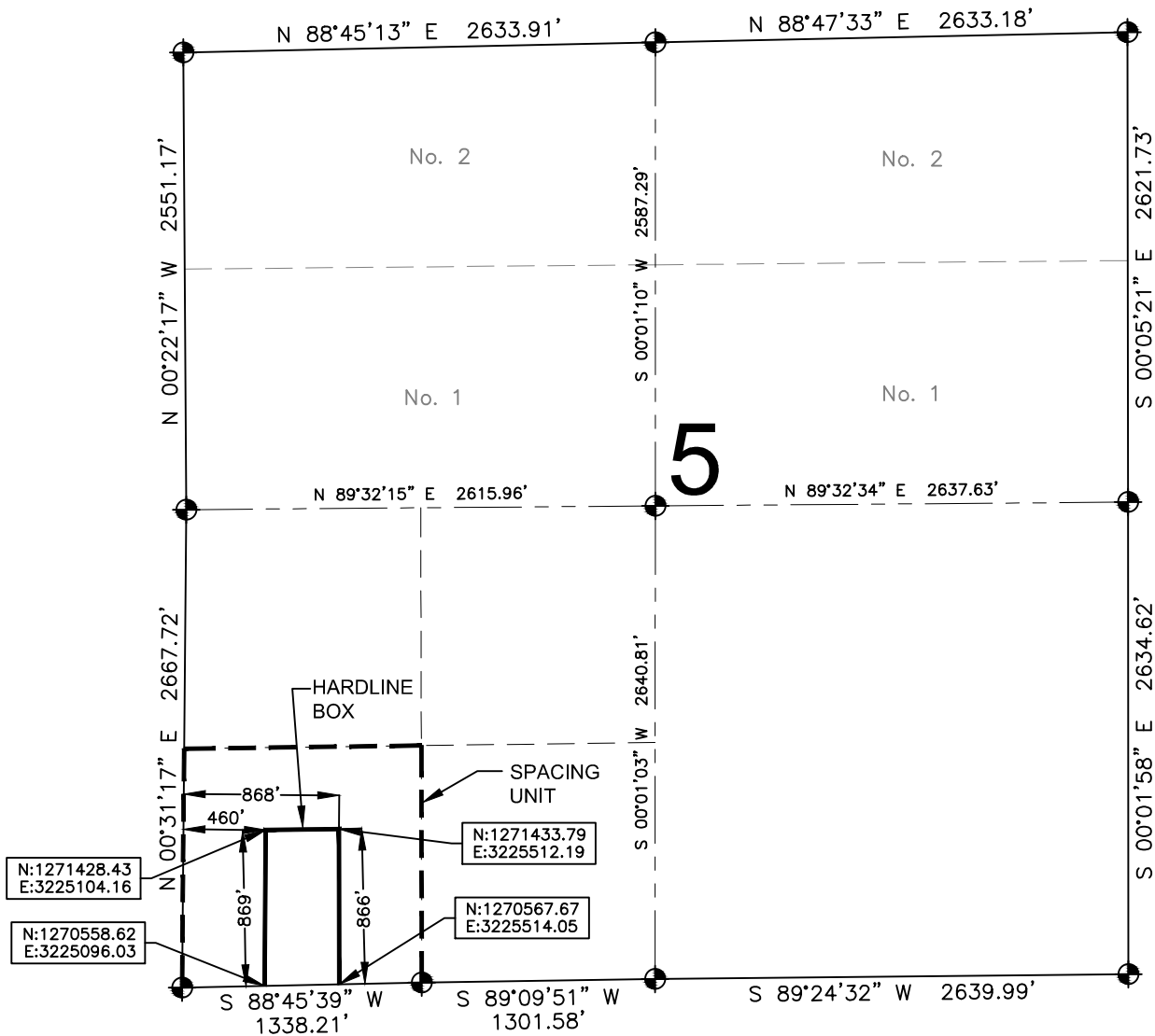
A blue ink signature of Craig Richardson, consisting of a stylized 'C' followed by a horizontal line.

Craig Richardson
Regulatory Analyst II

Enclosure

HARDLINE EXHIBIT: GREEN 2N-8HZ

SECTION 5, TOWNSHIP 1 NORTH, RANGE 65 WEST, 6TH P.M.



LEGEND

- = EXISTING MONUMENT
- = PROPOSED HEEL
- = CALCULATED POSITION
- ⬮ = BOTTOM HOLE
- BH = BOTTOM HOLE

HEEL LOCATION

NAD83
LATITUDE= 40.072179°
LONGITUDE= 104.695050°

LATITUDE= 40°04'19.844"
LONGITUDE= 104°41'42.181"

BOTTOM HOLE LOCATION

NAD83
LATITUDE= 40.058763°
LONGITUDE= 104.694813°

LATITUDE= 40°03'31.548"
LONGITUDE= 104°41'41.327"

QRT/QRT SECTIONS WITHIN PATH OF THE HARDLINE

SWSW, SEC. 5

AVAILABLE FOOTAGE

7021'

NOTES:

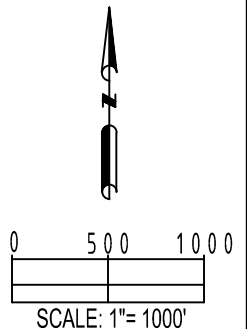
- THIS DOCUMENT IS NOT A LAND SURVEY PLAT OR IMPROVEMENT SURVEY PLAT. THIS DOCUMENT DOES NOT REFLECT A FIELD SURVEY. SECTION BREAKDOWN, MONUMENTATION AND HORIZONTAL POSITIONS SHOWN ARE BASED ON THE HEEL AND BOTTOM HOLE LOCATION PROVIDED BY ANADARKO PETROLEUM CORPORATION

PREPARED BY:



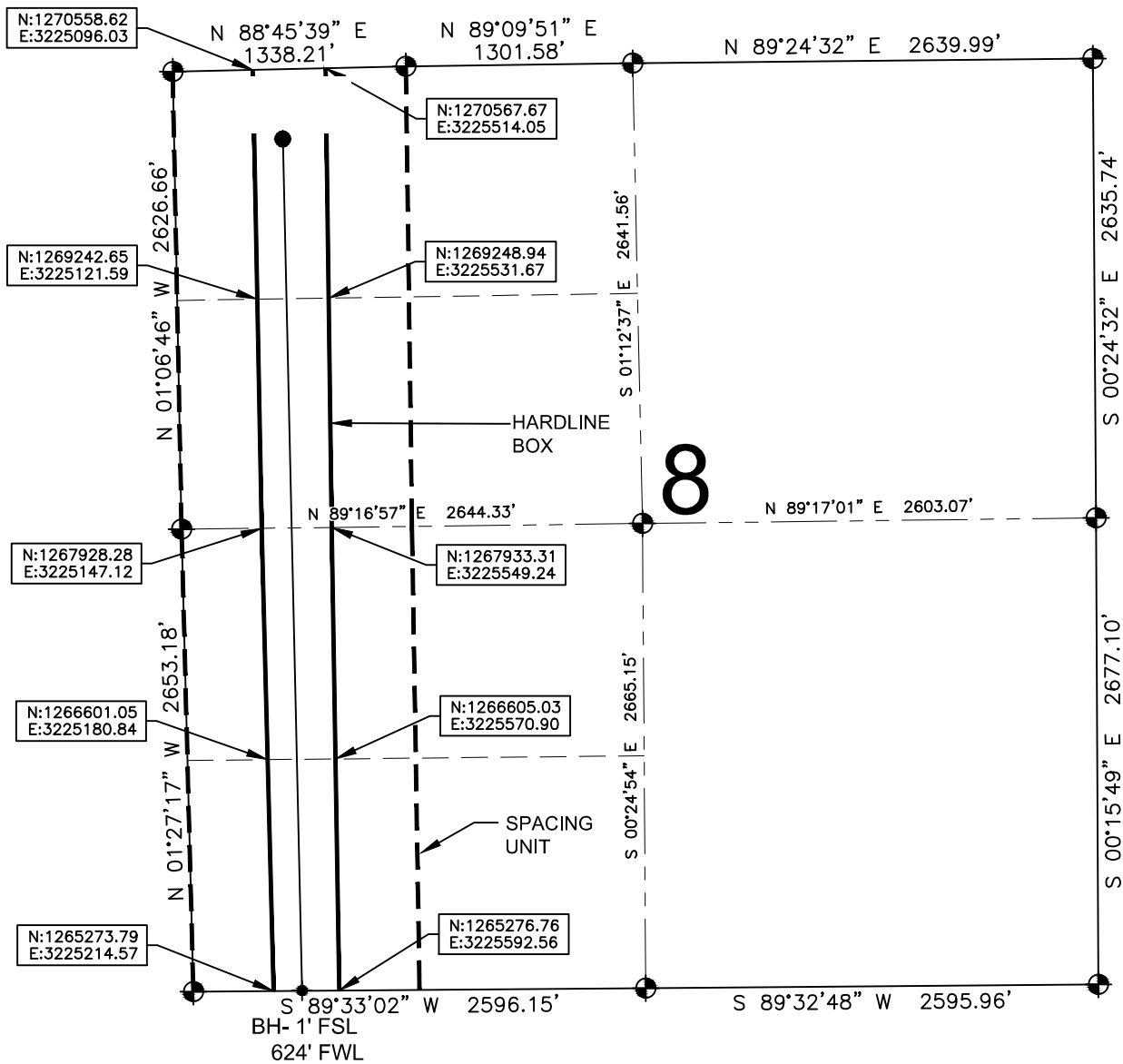
SHEET 1 OF 3

DRAWING DATE:	HEEL LOCATION:
07-31-14	NW 1/4 NW 1/4,
BY:	SEC. 8, T1N, R65W, 6TH P.M.
SMF	WELD COUNTY, COLORADO
CHECKED:	
SMD	



HARDLINE EXHIBIT: GREEN 2N-8HZ

SECTION 8, TOWNSHIP 1 NORTH, RANGE 65 WEST, 6TH P.M.



LEGEND

- = EXISTING MONUMENT
- = PROPOSED HEEL
- = CALCULATED POSITION
- ◆ = BOTTOM HOLE
- BH = BOTTOM HOLE

QRT/QRT SECTIONS WITHIN PATH OF THE HARDLINE

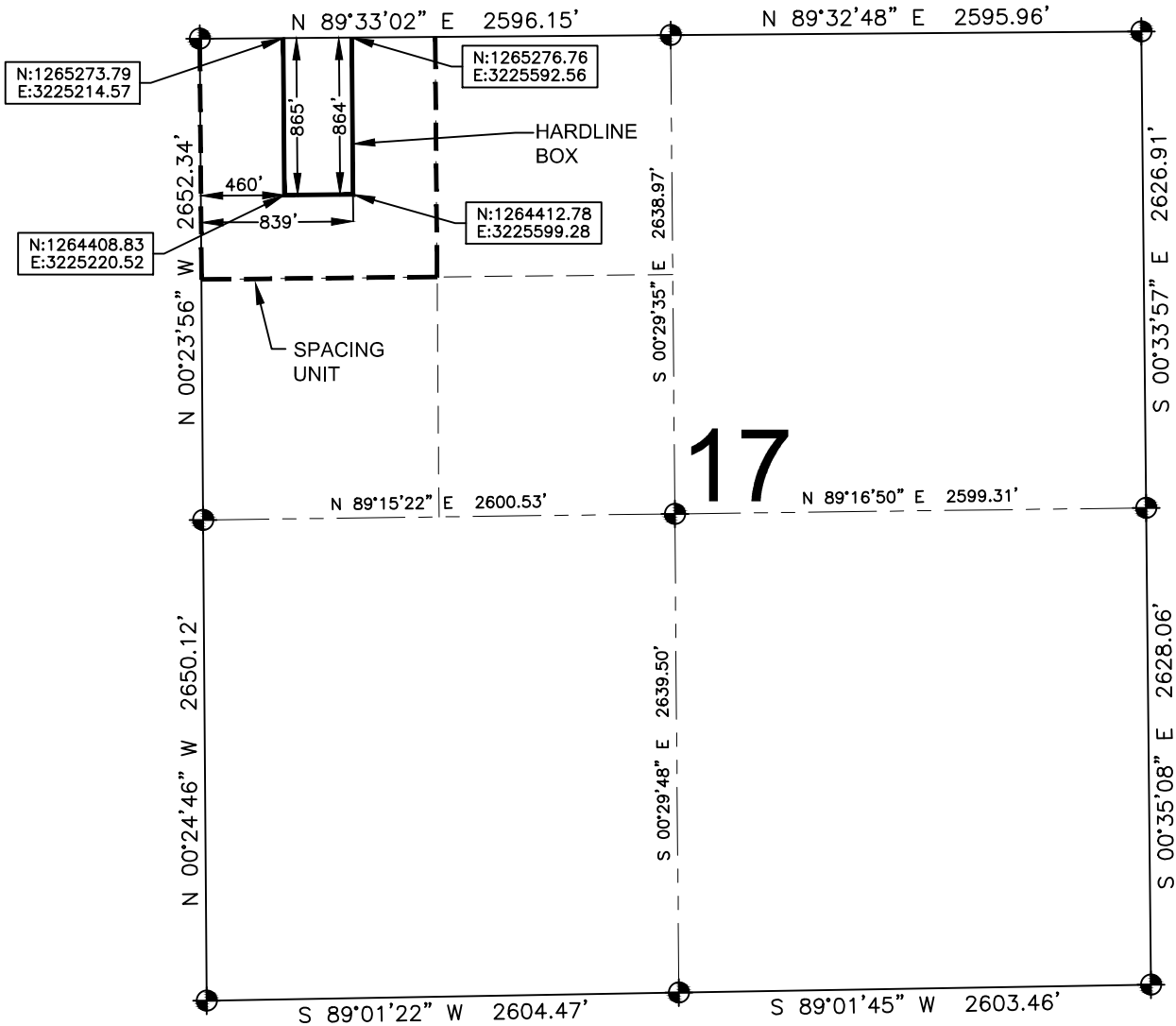
- NWNW, SEC. 8
- SWNW, SEC. 8
- NWSW, SEC. 8
- SWSW, SEC. 8

NOTES:





- THIS DOCUMENT IS NOT A LAND SURVEY PLAT OR IMPROVEMENT SURVEY PLAT. THIS DOCUMENT DOES NOT REFLECT A FIELD SURVEY. SECTION BREAKDOWN, MONUMENTATION AND HORIZONTAL POSITIONS SHOWN ARE BASED ON THE HEEL AND BOTTOM HOLE LOCATION PROVIDED BY ANADARKO PETROLEUM CORPORATION

HARDLINE EXHIBIT: GREEN 2N-8HZ

SECTION 17, TOWNSHIP 1 NORTH, RANGE 65 WEST, 6TH P.M.



LEGEND

-  = EXISTING MONUMENT  = BOTTOM HOLE
 = PROPOSED HEEL BH = BOTTOM HOLE
 = CALCULATED POSITION

QRT/QRT SECTIONS WITHIN PATH OF THE HARDLINE

NWNW, SEC. 17

NOTES:

1. THIS DOCUMENT IS NOT A LAND SURVEY PLAT OR IMPROVEMENT SURVEY PLAT. THIS DOCUMENT DOES NOT REFLECT A FIELD SURVEY. SECTION BREAKDOWN, MONUMENTATION AND HORIZONTAL POSITIONS SHOWN ARE BASED ON THE HEEL AND BOTTOM HOLE LOCATION PROVIDED BY ANADARKO PETROLEUM CORPORATION

PREPARED BY:

PFS  **It.**
Petroleum Field Services, LLC
7535 Hilltop Circle
Denver, CO 80221

SHEET 3 OF 3

DRAWING DATE: 07-31-14		HEEL LOCATION: NW 1/4 NW 1/4, SEC. 8, T1N, R65W, 6TH P.M. WELD COUNTY, COLORADO
BY: SMF	CHECKED: SMD	

