

Anadarko Petroleum Corp.

Weld County, CO (NAD 83)

Sec. 28-T2N-R67W

HUNZIKER 26C-4HZ

Plan A

Plan: Rev A0 Permit

Sperry Drilling Services

Proposal Report

01 October, 2014

Well Coordinates: 1,281,033.38 N, 3,170,131.01 E (40° 06' 11.62" N, 104° 53' 30.47" W)

Ground Level: 5,049.00 usft

Local Coordinate Origin:

Centered on Well HUNZIKER 26C-4HZ

Viewing Datum:

RKB = 17' @ 5066.00usft (Drilling Rig)

TVDs to System:

N

North Reference:

True

Unit System:

API - US Survey Feet - Custom

Geodetic Scale Factor Applied

Version: 5000.1 Build: 70

HALLIBURTON

Project: Weld County, CO (NAD 83)
 Site: Sec. 28-T2N-R67W
 Well: HUNZIKER 26C-4HZ
 Wellbore: Plan A
 Design: Rev A0 Permit

Anadarko Petroleum Corp.

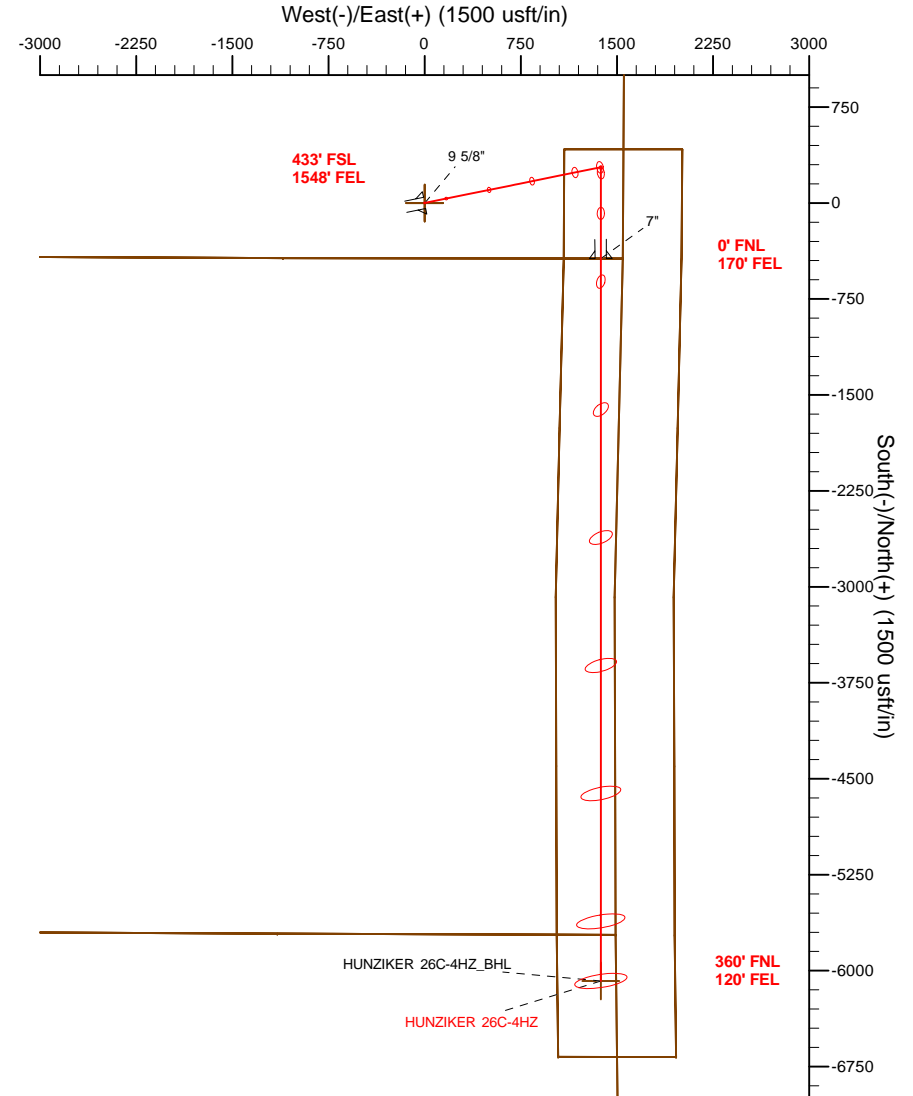
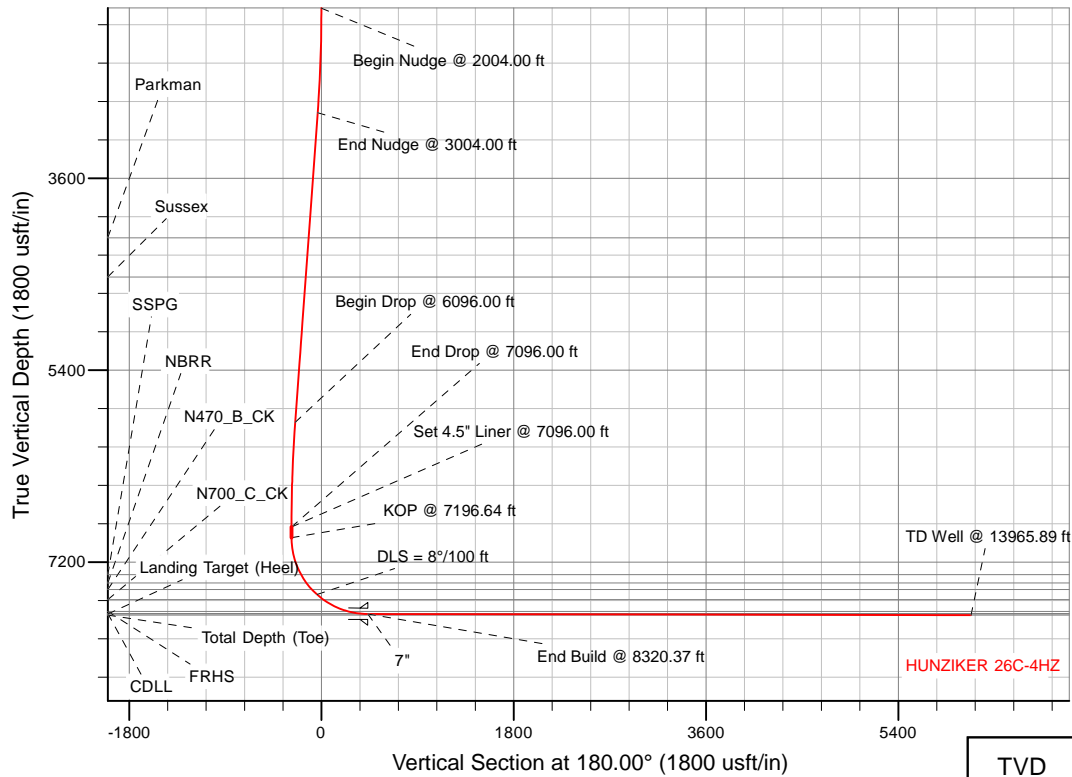


SECTION DETAILS

Sec	MD	Inc	Azi	TVD	+N/-S	+E/-W	Dleg	TFace	V Sect	Target
1	0.00	0.00	0.00	0.00	0.00	0.00	0.00	0.00	0.00	
2	2004.00	0.00	0.00	2004.00	0.00	0.00	0.00	0.00	0.00	
3	3004.00	20.00	78.50	2983.82	34.44	169.30	2.00	78.50	-34.44	
4	6096.00	20.00	78.50	5889.35	245.28	1205.60	0.00	0.00	-245.28	
5	7096.00	0.00	0.00	6869.16	279.73	1374.90	2.00	180.00	-279.73	
6	7196.64	0.00	0.00	6969.80	279.73	1374.90	0.00	0.00	-279.73	
7	8320.37	89.90	180.00	7686.00	-435.20	1374.91	8.00	180.00	435.20	
8	13965.89	89.90	180.00	7696.00	-6080.72	1374.98	0.00	0.00	6080.72	HUNZIKER 26C-4HZ_BHL

WELLBORE TARGET DETAILS (LAT/LONG)

Name	TVD	+N/-S	+E/-W	Latitude	Longitude	Shape
HUNZIKER 26C-4HZ_LD	0.00	0.00	0.00	40° 6' 11.617 N	104° 53' 30.469 W	Polygon
HUNZIKER 26C-4HZ_SEC	0.00	0.00	0.00	40° 6' 11.617 N	104° 53' 30.469 W	Polygon
HUNZIKER 26C-4HZ_SHL	0.00	0.00	0.00	40° 6' 11.617 N	104° 53' 30.469 W	Point
HUNZIKER 26C-4HZ_BHL	7696.00	-6080.72	1374.98	40° 5' 11.526 N	104° 53' 12.779 W	Point



TVD	MD	Annotation
6969.80	7196.64	KOP @ 7196.64 ft

WELL DETAILS: HUNZIKER 26C-4HZ	
Ground Level:	5049.00
RKB = 17' @ 5066.00usft (Drilling Rig)	
Plan: Rev A0 Permit (HUNZIKER 26C-4HZ/Plan A)	
Created By: Katie Benner	Date: 9/29/2014
Reviewed: _____	Date: _____

Plan Report for HUNZIKER 26C-4HZ - Rev A0 Permit

Measured Depth (usft)	Inclination (°)	Azimuth (°)	Vertical Depth (usft)	+N/-S (usft)	+E/-W (usft)	Vertical Section (usft)	Dogleg Rate (°/100usft)	Build Rate (°/100usft)	Turn Rate (°/100usft)	Toolface Azimuth (°)
0.00	0.00	0.00	0.00	0.00	0.00	0.00	0.00	0.00	0.00	0.00
Tie-On to Surface @ 0.00 ft - HUNZIKER 26C-4HZ_LD - HUNZIKER 26C-4HZ_SHL - HUNZIKER 26C-4HZ_SEC										
100.00	0.00	0.00	100.00	0.00	0.00	0.00	0.00	0.00	0.00	0.00
200.00	0.00	0.00	200.00	0.00	0.00	0.00	0.00	0.00	0.00	0.00
300.00	0.00	0.00	300.00	0.00	0.00	0.00	0.00	0.00	0.00	0.00
400.00	0.00	0.00	400.00	0.00	0.00	0.00	0.00	0.00	0.00	0.00
500.00	0.00	0.00	500.00	0.00	0.00	0.00	0.00	0.00	0.00	0.00
600.00	0.00	0.00	600.00	0.00	0.00	0.00	0.00	0.00	0.00	0.00
700.00	0.00	0.00	700.00	0.00	0.00	0.00	0.00	0.00	0.00	0.00
800.00	0.00	0.00	800.00	0.00	0.00	0.00	0.00	0.00	0.00	0.00
900.00	0.00	0.00	900.00	0.00	0.00	0.00	0.00	0.00	0.00	0.00
1,000.00	0.00	0.00	1,000.00	0.00	0.00	0.00	0.00	0.00	0.00	0.00
1,100.00	0.00	0.00	1,100.00	0.00	0.00	0.00	0.00	0.00	0.00	0.00
1,200.00	0.00	0.00	1,200.00	0.00	0.00	0.00	0.00	0.00	0.00	0.00
1,257.00	0.00	0.00	1,257.00	0.00	0.00	0.00	0.00	0.00	0.00	0.00
9 5/8"										
1,300.00	0.00	0.00	1,300.00	0.00	0.00	0.00	0.00	0.00	0.00	0.00
1,400.00	0.00	0.00	1,400.00	0.00	0.00	0.00	0.00	0.00	0.00	0.00
1,500.00	0.00	0.00	1,500.00	0.00	0.00	0.00	0.00	0.00	0.00	0.00
1,600.00	0.00	0.00	1,600.00	0.00	0.00	0.00	0.00	0.00	0.00	0.00
1,700.00	0.00	0.00	1,700.00	0.00	0.00	0.00	0.00	0.00	0.00	0.00
1,800.00	0.00	0.00	1,800.00	0.00	0.00	0.00	0.00	0.00	0.00	0.00
1,900.00	0.00	0.00	1,900.00	0.00	0.00	0.00	0.00	0.00	0.00	0.00
2,000.00	0.00	0.00	2,000.00	0.00	0.00	0.00	0.00	0.00	0.00	0.00
2,004.00	0.00	0.00	2,004.00	0.00	0.00	0.00	0.00	0.00	0.00	0.00
Begin Nudge @ 2004.00 ft										
2,100.00	1.92	78.50	2,099.98	0.32	1.58	-0.32	2.00	2.00	0.00	78.50
2,200.00	3.92	78.50	2,199.85	1.34	6.57	-1.34	2.00	2.00	0.00	0.00
2,300.00	5.92	78.50	2,299.47	3.05	14.97	-3.05	2.00	2.00	0.00	0.00
2,400.00	7.92	78.50	2,398.74	5.45	26.78	-5.45	2.00	2.00	0.00	0.00
2,500.00	9.92	78.50	2,497.53	8.54	41.97	-8.54	2.00	2.00	0.00	0.00
2,600.00	11.92	78.50	2,595.71	12.32	60.53	-12.32	2.00	2.00	0.00	0.00
2,700.00	13.92	78.50	2,693.17	16.77	82.44	-16.77	2.00	2.00	0.00	0.00
2,800.00	15.92	78.50	2,789.80	21.91	107.67	-21.91	2.00	2.00	0.00	0.00
2,900.00	17.92	78.50	2,885.46	27.71	136.19	-27.71	2.00	2.00	0.00	0.00
3,000.00	19.92	78.50	2,980.06	34.17	167.96	-34.17	2.00	2.00	0.00	0.00
3,004.00	20.00	78.50	2,983.82	34.44	169.30	-34.44	2.00	2.00	0.00	0.00
End Nudge @ 3004.00 ft										
3,100.00	20.00	78.50	3,074.03	40.99	201.47	-40.99	0.00	0.00	0.00	0.00
3,200.00	20.00	78.50	3,168.00	47.81	234.99	-47.81	0.00	0.00	0.00	0.00
3,300.00	20.00	78.50	3,261.96	54.63	268.51	-54.63	0.00	0.00	0.00	0.00
3,400.00	20.00	78.50	3,355.93	61.45	302.02	-61.45	0.00	0.00	0.00	0.00
3,500.00	20.00	78.50	3,449.90	68.27	335.54	-68.27	0.00	0.00	0.00	0.00
3,600.00	20.00	78.50	3,543.87	75.08	369.05	-75.08	0.00	0.00	0.00	0.00
3,700.00	20.00	78.50	3,637.84	81.90	402.57	-81.90	0.00	0.00	0.00	0.00
3,800.00	20.00	78.50	3,731.81	88.72	436.08	-88.72	0.00	0.00	0.00	0.00
3,900.00	20.00	78.50	3,825.78	95.54	469.60	-95.54	0.00	0.00	0.00	0.00
4,000.00	20.00	78.50	3,919.75	102.36	503.11	-102.36	0.00	0.00	0.00	0.00
4,100.00	20.00	78.50	4,013.72	109.18	536.63	-109.18	0.00	0.00	0.00	0.00
4,200.00	20.00	78.50	4,107.69	116.00	570.14	-116.00	0.00	0.00	0.00	0.00
4,252.48	20.00	78.50	4,157.00	119.58	587.73	-119.58	0.00	0.00	0.00	0.00
Parkman										
4,300.00	20.00	78.50	4,201.66	122.82	603.66	-122.82	0.00	0.00	0.00	0.00
4,400.00	20.00	78.50	4,295.63	129.63	637.17	-129.63	0.00	0.00	0.00	0.00
4,500.00	20.00	78.50	4,389.60	136.45	670.69	-136.45	0.00	0.00	0.00	0.00
4,600.00	20.00	78.50	4,483.56	143.27	704.21	-143.27	0.00	0.00	0.00	0.00
4,646.22	20.00	78.50	4,527.00	146.42	719.70	-146.42	0.00	0.00	0.00	0.00
Sussex										

Plan Report for HUNZIKER 26C-4HZ - Rev A0 Permit

Measured Depth (usft)	Inclination (°)	Azimuth (°)	Vertical Depth (usft)	+N/-S (usft)	+E/-W (usft)	Vertical Section (usft)	Dogleg Rate (°/100usft)	Build Rate (°/100usft)	Turn Rate (°/100usft)	Toolface Azimuth (°)
4,700.00	20.00	78.50	4,577.53	150.09	737.72	-150.09	0.00	0.00	0.00	0.00
4,800.00	20.00	78.50	4,671.50	156.91	771.24	-156.91	0.00	0.00	0.00	0.00
4,900.00	20.00	78.50	4,765.47	163.73	804.75	-163.73	0.00	0.00	0.00	0.00
5,000.00	20.00	78.50	4,859.44	170.55	838.27	-170.55	0.00	0.00	0.00	0.00
5,100.00	20.00	78.50	4,953.41	177.37	871.78	-177.37	0.00	0.00	0.00	0.00
5,200.00	20.00	78.50	5,047.38	184.18	905.30	-184.18	0.00	0.00	0.00	0.00
5,300.00	20.00	78.50	5,141.35	191.00	938.81	-191.00	0.00	0.00	0.00	0.00
5,400.00	20.00	78.50	5,235.32	197.82	972.33	-197.82	0.00	0.00	0.00	0.00
5,500.00	20.00	78.50	5,329.29	204.64	1,005.84	-204.64	0.00	0.00	0.00	0.00
5,600.00	20.00	78.50	5,423.26	211.46	1,039.36	-211.46	0.00	0.00	0.00	0.00
5,700.00	20.00	78.50	5,517.23	218.28	1,072.87	-218.28	0.00	0.00	0.00	0.00
5,800.00	20.00	78.50	5,611.20	225.10	1,106.39	-225.10	0.00	0.00	0.00	0.00
5,900.00	20.00	78.50	5,705.17	231.92	1,139.91	-231.92	0.00	0.00	0.00	0.00
6,000.00	20.00	78.50	5,799.13	238.74	1,173.42	-238.74	0.00	0.00	0.00	0.00
6,096.00	20.00	78.50	5,889.35	245.28	1,205.60	-245.28	0.00	0.00	0.00	0.00
Begin Drop @ 6096.00 ft										
6,100.00	19.92	78.50	5,893.10	245.55	1,206.93	-245.55	2.00	-2.00	0.00	180.00
6,200.00	17.92	78.50	5,987.70	252.02	1,238.71	-252.02	2.00	-2.00	0.00	180.00
6,300.00	15.92	78.50	6,083.36	257.82	1,267.22	-257.82	2.00	-2.00	0.00	180.00
6,400.00	13.92	78.50	6,179.99	262.95	1,292.45	-262.95	2.00	-2.00	0.00	180.00
6,500.00	11.92	78.50	6,277.45	267.41	1,314.36	-267.41	2.00	-2.00	0.00	180.00
6,600.00	9.92	78.50	6,375.63	271.19	1,332.92	-271.19	2.00	-2.00	0.00	-180.00
6,700.00	7.92	78.50	6,474.42	274.28	1,348.12	-274.28	2.00	-2.00	0.00	180.00
6,800.00	5.92	78.50	6,573.69	276.68	1,359.92	-276.68	2.00	-2.00	0.00	180.00
6,900.00	3.92	78.50	6,673.31	278.39	1,368.33	-278.39	2.00	-2.00	0.00	180.00
7,000.00	1.92	78.50	6,773.18	279.40	1,373.32	-279.40	2.00	-2.00	0.00	180.00
7,096.00	0.00	0.00	6,869.16	279.73	1,374.90	-279.73	2.00	-2.00	0.00	-180.00
End Drop @ 7096.00 ft - Set 4.5" Liner @ 7096.00 ft										
7,100.00	0.00	0.00	6,873.16	279.73	1,374.90	-279.73	0.00	0.00	0.00	0.00
7,196.64	0.00	0.00	6,969.80	279.73	1,374.90	-279.73	0.00	0.00	0.00	0.00
KOP @ 7196.64 ft										
7,200.00	0.27	180.00	6,973.16	279.72	1,374.90	-279.72	8.00	8.00	0.00	180.00
7,300.00	8.27	180.00	7,072.80	272.28	1,374.90	-272.28	8.00	8.00	0.00	0.00
7,400.00	16.27	180.00	7,170.44	251.05	1,374.90	-251.05	8.00	8.00	0.00	0.00
7,500.00	24.27	180.00	7,264.17	216.43	1,374.90	-216.43	8.00	8.00	0.00	0.00
7,557.97	28.91	180.00	7,316.00	190.49	1,374.90	-190.49	8.00	8.00	0.00	0.00
SSPG										
7,600.00	32.27	180.00	7,352.17	169.11	1,374.90	-169.11	8.00	8.00	0.00	0.00
7,653.13	36.52	180.00	7,396.00	139.11	1,374.90	-139.11	8.00	8.00	0.00	0.00
NBRR										
7,700.00	40.27	180.00	7,432.73	110.00	1,374.90	-110.00	8.00	8.00	0.00	0.00
7,731.08	42.75	180.00	7,456.00	89.41	1,374.90	-89.41	8.00	8.00	0.00	0.00
N470_B_CK										
7,800.00	48.27	180.00	7,504.28	40.26	1,374.90	-40.26	8.00	8.00	0.00	0.00
DLS = 8°/100 ft										
7,874.68	54.24	180.00	7,551.00	-17.97	1,374.90	17.97	8.00	8.00	0.00	0.00
N700_C_CK										
7,900.00	56.27	180.00	7,565.43	-38.77	1,374.90	38.77	8.00	8.00	0.00	0.00
8,000.00	64.27	180.00	7,614.98	-125.53	1,374.90	125.53	8.00	8.00	0.00	0.00
8,100.00	72.27	180.00	7,651.98	-218.35	1,374.90	218.35	8.00	8.00	0.00	0.00
8,131.86	74.82	180.00	7,661.00	-248.90	1,374.90	248.90	8.00	8.00	0.00	0.00
FRHS										
8,200.00	80.27	180.00	7,675.69	-315.42	1,374.90	315.42	8.00	8.00	0.00	0.00
8,236.98	83.23	180.00	7,681.00	-352.01	1,374.90	352.01	8.00	8.00	0.00	0.00
CDLL										
8,300.00	88.27	180.00	7,685.67	-414.83	1,374.90	414.83	8.00	8.00	0.00	0.00
8,320.37	89.90	180.00	7,686.00	-435.20	1,374.91	435.20	8.00	8.00	0.00	0.00
End Build @ 8320.37 ft - Landing Target (Heel) - 7"										

Plan Report for HUNZIKER 26C-4HZ - Rev A0 Permit

Measured Depth (usft)	Inclination (°)	Azimuth (°)	Vertical Depth (usft)	+N/-S (usft)	+E/-W (usft)	Vertical Section (usft)	Dogleg Rate (°/100usft)	Build Rate (°/100usft)	Turn Rate (°/100usft)	Toolface Azimuth (°)
8,400.00	89.90	180.00	7,686.14	-514.83	1,374.91	514.83	0.00	0.00	0.00	0.00
8,500.00	89.90	180.00	7,686.32	-614.83	1,374.91	614.83	0.00	0.00	0.00	0.00
8,600.00	89.90	180.00	7,686.49	-714.83	1,374.91	714.83	0.00	0.00	0.00	0.00
8,700.00	89.90	180.00	7,686.67	-814.83	1,374.91	814.83	0.00	0.00	0.00	0.00
8,800.00	89.90	180.00	7,686.85	-914.83	1,374.91	914.83	0.00	0.00	0.00	0.00
8,900.00	89.90	180.00	7,687.02	-1,014.83	1,374.91	1,014.83	0.00	0.00	0.00	0.00
9,000.00	89.90	180.00	7,687.20	-1,114.83	1,374.91	1,114.83	0.00	0.00	0.00	0.00
9,100.00	89.90	180.00	7,687.38	-1,214.83	1,374.92	1,214.83	0.00	0.00	0.00	0.00
9,200.00	89.90	180.00	7,687.56	-1,314.83	1,374.92	1,314.83	0.00	0.00	0.00	0.00
9,300.00	89.90	180.00	7,687.73	-1,414.83	1,374.92	1,414.83	0.00	0.00	0.00	0.00
9,400.00	89.90	180.00	7,687.91	-1,514.83	1,374.92	1,514.83	0.00	0.00	0.00	0.00
9,500.00	89.90	180.00	7,688.09	-1,614.83	1,374.92	1,614.83	0.00	0.00	0.00	0.00
9,600.00	89.90	180.00	7,688.26	-1,714.83	1,374.92	1,714.83	0.00	0.00	0.00	0.00
9,700.00	89.90	180.00	7,688.44	-1,814.83	1,374.92	1,814.83	0.00	0.00	0.00	0.00
9,800.00	89.90	180.00	7,688.62	-1,914.83	1,374.93	1,914.83	0.00	0.00	0.00	0.00
9,900.00	89.90	180.00	7,688.80	-2,014.83	1,374.93	2,014.83	0.00	0.00	0.00	0.00
10,000.00	89.90	180.00	7,688.97	-2,114.83	1,374.93	2,114.83	0.00	0.00	0.00	0.00
10,100.00	89.90	180.00	7,689.15	-2,214.83	1,374.93	2,214.83	0.00	0.00	0.00	0.00
10,200.00	89.90	180.00	7,689.33	-2,314.83	1,374.93	2,314.83	0.00	0.00	0.00	0.00
10,300.00	89.90	180.00	7,689.50	-2,414.83	1,374.93	2,414.83	0.00	0.00	0.00	0.00
10,400.00	89.90	180.00	7,689.68	-2,514.83	1,374.93	2,514.83	0.00	0.00	0.00	0.00
10,500.00	89.90	180.00	7,689.86	-2,614.83	1,374.94	2,614.83	0.00	0.00	0.00	0.00
10,600.00	89.90	180.00	7,690.04	-2,714.83	1,374.94	2,714.83	0.00	0.00	0.00	0.00
10,700.00	89.90	180.00	7,690.21	-2,814.83	1,374.94	2,814.83	0.00	0.00	0.00	0.00
10,800.00	89.90	180.00	7,690.39	-2,914.83	1,374.94	2,914.83	0.00	0.00	0.00	0.00
10,900.00	89.90	180.00	7,690.57	-3,014.83	1,374.94	3,014.83	0.00	0.00	0.00	0.00
11,000.00	89.90	180.00	7,690.74	-3,114.83	1,374.94	3,114.83	0.00	0.00	0.00	0.00
11,100.00	89.90	180.00	7,690.92	-3,214.83	1,374.94	3,214.83	0.00	0.00	0.00	0.00
11,200.00	89.90	180.00	7,691.10	-3,314.83	1,374.94	3,314.83	0.00	0.00	0.00	0.00
11,300.00	89.90	180.00	7,691.28	-3,414.83	1,374.95	3,414.83	0.00	0.00	0.00	0.00
11,400.00	89.90	180.00	7,691.45	-3,514.83	1,374.95	3,514.83	0.00	0.00	0.00	0.00
11,500.00	89.90	180.00	7,691.63	-3,614.83	1,374.95	3,614.83	0.00	0.00	0.00	0.00
11,600.00	89.90	180.00	7,691.81	-3,714.83	1,374.95	3,714.83	0.00	0.00	0.00	0.00
11,700.00	89.90	180.00	7,691.99	-3,814.83	1,374.95	3,814.83	0.00	0.00	0.00	0.00
11,800.00	89.90	180.00	7,692.16	-3,914.83	1,374.95	3,914.83	0.00	0.00	0.00	0.00
11,900.00	89.90	180.00	7,692.34	-4,014.83	1,374.95	4,014.83	0.00	0.00	0.00	0.00
12,000.00	89.90	180.00	7,692.52	-4,114.83	1,374.96	4,114.83	0.00	0.00	0.00	0.00
12,100.00	89.90	180.00	7,692.69	-4,214.83	1,374.96	4,214.83	0.00	0.00	0.00	0.00
12,200.00	89.90	180.00	7,692.87	-4,314.83	1,374.96	4,314.83	0.00	0.00	0.00	0.00
12,300.00	89.90	180.00	7,693.05	-4,414.83	1,374.96	4,414.83	0.00	0.00	0.00	0.00
12,400.00	89.90	180.00	7,693.23	-4,514.83	1,374.96	4,514.83	0.00	0.00	0.00	0.00
12,500.00	89.90	180.00	7,693.40	-4,614.83	1,374.96	4,614.83	0.00	0.00	0.00	0.00
12,600.00	89.90	180.00	7,693.58	-4,714.82	1,374.96	4,714.82	0.00	0.00	0.00	0.00
12,700.00	89.90	180.00	7,693.76	-4,814.82	1,374.97	4,814.82	0.00	0.00	0.00	0.00
12,800.00	89.90	180.00	7,693.93	-4,914.82	1,374.97	4,914.82	0.00	0.00	0.00	0.00
12,900.00	89.90	180.00	7,694.11	-5,014.82	1,374.97	5,014.82	0.00	0.00	0.00	0.00
13,000.00	89.90	180.00	7,694.29	-5,114.82	1,374.97	5,114.82	0.00	0.00	0.00	0.00
13,100.00	89.90	180.00	7,694.47	-5,214.82	1,374.97	5,214.82	0.00	0.00	0.00	0.00
13,200.00	89.90	180.00	7,694.64	-5,314.82	1,374.97	5,314.82	0.00	0.00	0.00	0.00
13,300.00	89.90	180.00	7,694.82	-5,414.82	1,374.97	5,414.82	0.00	0.00	0.00	0.00
13,400.00	89.90	180.00	7,695.00	-5,514.82	1,374.97	5,514.82	0.00	0.00	0.00	0.00
13,500.00	89.90	180.00	7,695.17	-5,614.82	1,374.98	5,614.82	0.00	0.00	0.00	0.00
13,600.00	89.90	180.00	7,695.35	-5,714.82	1,374.98	5,714.82	0.00	0.00	0.00	0.00
13,700.00	89.90	180.00	7,695.53	-5,814.82	1,374.98	5,814.82	0.00	0.00	0.00	0.00
13,800.00	89.90	180.00	7,695.71	-5,914.82	1,374.98	5,914.82	0.00	0.00	0.00	0.00
13,900.00	89.90	180.00	7,695.88	-6,014.82	1,374.98	6,014.82	0.00	0.00	0.00	0.00
13,965.89	89.90	180.00	7,696.00	-6,080.71	1,374.98	6,080.71	0.00	0.00	0.00	0.00

TD Well @ 13965.89 ft - HUNZIKER 26C-4HZ_BHL

Plan Report for HUNZIKER 26C-4HZ - Rev A0 Permit**Plan Annotations**

Measured Depth (usft)	Vertical Depth (usft)	Local Coordinates		Comment
		+N/-S (usft)	+E/-W (usft)	
0.00	0.00	0.00	0.00	Tie-On to Surface @ 0.00 ft
2,004.00	2,004.00	0.00	0.00	Begin Nudge @ 2004.00 ft
3,004.00	2,983.82	34.44	169.30	End Nudge @ 3004.00 ft
6,096.00	5,889.35	245.28	1,205.60	Begin Drop @ 6096.00 ft
7,096.00	6,869.16	279.73	1,374.90	End Drop @ 7096.00 ft
7,096.00	6,869.16	279.73	1,374.90	Set 4.5" Liner @ 7096.00 ft
7,196.64	6,969.80	279.73	1,374.90	KOP @ 7196.64 ft
7,800.00	7,504.28	40.26	1,374.90	DLS = 8°/100 ft
8,320.37	7,686.00	-435.20	1,374.91	End Build @ 8320.37 ft
13,965.89	7,696.00	-6,080.71	1,374.98	TD Well @ 13965.89 ft

Vertical Section Information

Angle Type	Target	Azimuth (°)	Origin Type	Origin		Start TVD (usft)
				+N/_S (usft)	+E/-W (usft)	
User	No Target (Freehand)	180.00	Slot	0.00	0.00	0.00

Survey tool program

From (usft)	To (usft)	Survey/Plan	Survey Tool
0.00	8,320.37	Rev A0 Permit	MWD
8,320.37	13,965.89	Rev A0 Permit	MWD

Casing Details

Measured Depth (usft)	Vertical Depth (usft)	Name	Casing Diameter (")	Hole Diameter (")
1,257.00	1,257.00	9 5/8"	9-5/8	13-1/2
8,320.37	7,686.00	7"	7	8-3/4

Formation Details

Measured Depth (usft)	Vertical Depth (usft)	Name	Lithology	Dip (°)	Dip Direction (°)
4,252.48	4,157.00	Parkman		0.00	
4,646.22	4,527.00	Sussex		0.00	
7,557.97	7,316.00	SSPG		0.00	
7,653.13	7,396.00	NBRR		0.00	
7,731.08	7,456.00	N470_B_CK		0.00	
7,874.68	7,551.00	N700_C_CK		0.00	
8,131.86	7,661.00	FRHS		0.00	
8,236.98	7,681.00	CDLL		0.00	
8,320.37	7,686.00	Landing Target (Heel)		0.00	
13,965.89	7,696.00	Total Depth (Toe)		0.00	

Plan Report for HUNZIKER 26C-4HZ - Rev A0 Permit

Targets associated with this wellbore

Target Name	TVD (usft)	+N/-S (usft)	+E/-W (usft)	Shape
HUNZIKER 26C-4HZ_LD	0.00	0.00	0.00	Polygon
HUNZIKER 26C-4HZ_SHL	0.00	0.00	0.00	Point
HUNZIKER 26C-4HZ_SEC	0.00	0.00	0.00	Polygon
HUNZIKER 26C-4HZ_BHL	7,696.00	-6,080.72	1,374.98	Point

Directional Difficulty Index

Average Dogleg over Survey:	0.93 °/100usft	Maximum Dogleg over Survey:	8.00 °/100usft at 8,327.79 usft
Net Tortousity applicable to Plans:	0.93 °/100usft	Directional Difficulty Index:	6.414

Audit Info

North Reference Sheet for Sec. 28-T2N-R67W - HUNZIKER 26C-4HZ - Plan A

All data is in US Feet unless otherwise stated. Directions and Coordinates are relative to True North Reference.
Vertical Depths are relative to RKB = 17' @ 5066.00usft (Drilling Rig). Northing and Easting are relative to HUNZIKER 26C-4HZ
Coordinate System is US State Plane 1983, Colorado Northern Zone using datum North American Datum 1983, ellipsoid GRS 1980
Projection method is Lambert Conformal Conic (2 parallel)
Central Meridian is -105.50°, Longitude Origin:0° 0' 0.000 E°, Latitude Origin:40° 47' 0.000 N°
False Easting: 3,000,000.00usft, False Northing: 1,000,000.00usft, Scale Reduction: 0.99996014

Grid Coordinates of Well: 1,281,033.38 usft N, 3,170,131.01 usft E
Geographical Coordinates of Well: 40° 06' 11.62" N, 104° 53' 30.47" W
Grid Convergence at Surface is: 0.39°

Based upon Minimum Curvature type calculations, at a Measured Depth of 13,965.89usft
the Bottom Hole Displacement is 6,234.23usft in the Direction of 167.26° (True).

Magnetic Convergence at surface is: -8.17° (24 September 2014 , BGGM2014)

Magnetic Model: BGGM2014
Date: 24-Sep-14
Declination: 8.56°
Inclination/Dip: 66.67°
Field Strength: 52509

Grid North is 0.39° East of True North (Grid Convergence)
Magnetic North is 8.56° East of True North (Magnetic Declination)
Magnetic North is 8.17° East of Grid North (Magnetic Convergence)

To convert a True Direction to a Grid Direction, Subtract 0.39°
To convert a Magnetic Direction to a True Direction, Add 8.56° East
To convert a Magnetic Direction to a Grid Direction, Add 8.17°