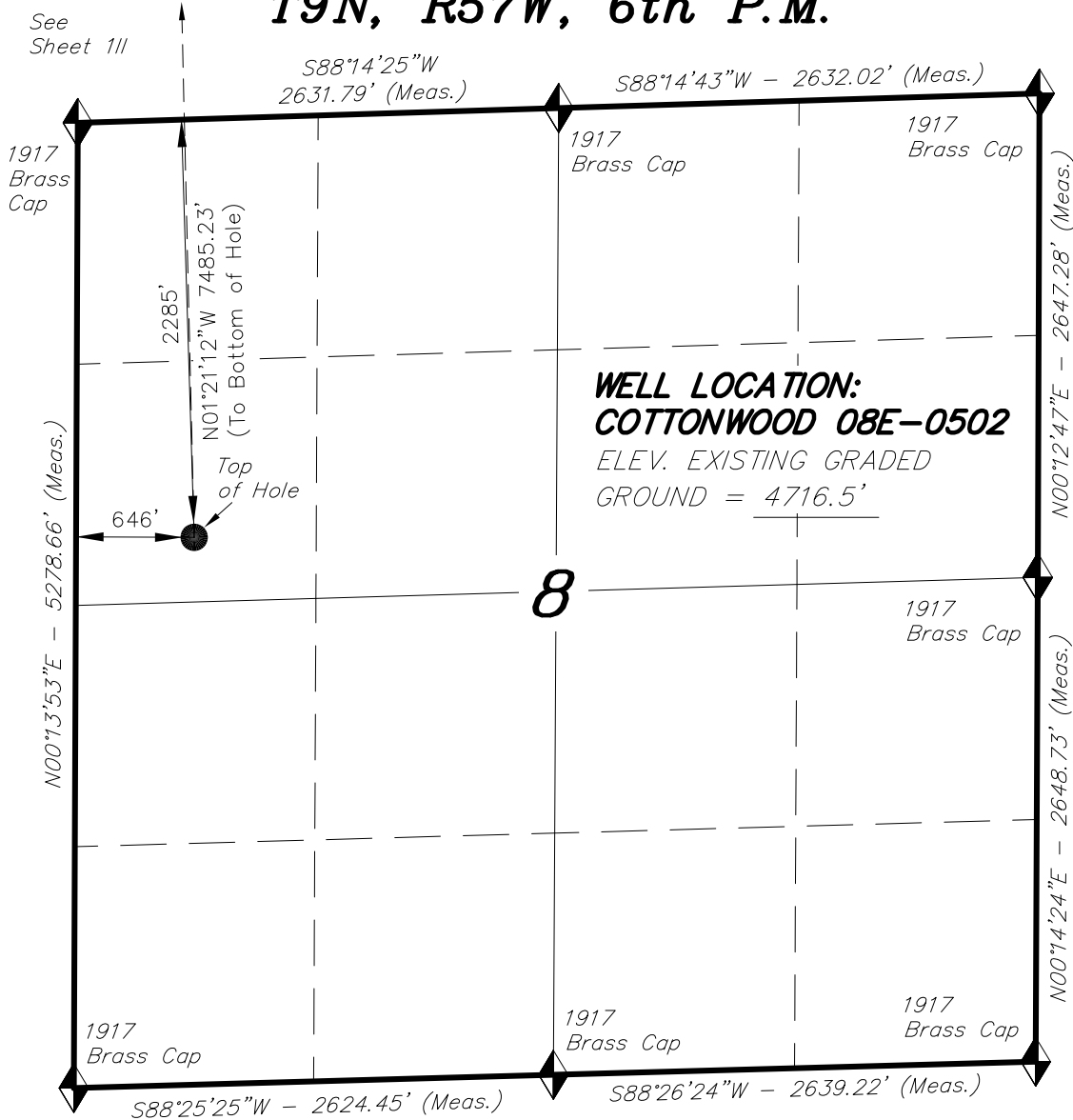
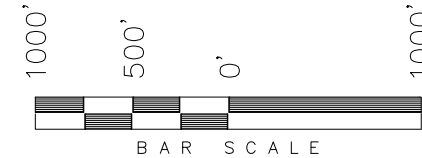


T9N, R57W, 6th P.M.

WHITING OIL & GAS CORP.



WELL LOCATION, COTTONWOOD 08E-0502,
LOCATED AS SHOWN IN THE SW 1/4
NW 1/4 OF SECTION 8, T9N, R57W,
6th P.M. WELD COUNTY, COLORADO.



NOTES:

- Bearings are based on Global Positioning Satellite observations.
- G.P.S. Operator: Q. Miller, (PDOP) = 1.7

IMPROVEMENT NOTE:

See addendum to legal plat (Sheet 2) for visible improvements within 500' of the proposed location.

THIS IS TO CERTIFY THAT THE ABOVE PLAT WAS PREPARED FROM FIELD NOTES OF REAL SURVEYS MADE BY ME OR UNDER MY SUPERVISION. THE LOCATION HAS BEEN STAKED ON THE GROUND AS SHOWN ON THE PLAT AND THAT THE SAME ARE TRUE AND CORRECT TO THE BEST OF MY KNOWLEDGE AND BELIEF.

10-27-14
30125
REGISTERED LAND SURVEYOR
REGISTRATION NO. 30125
STATE OF COLORADO
LAND SURVEYOR

◆ = SECTION CORNERS LOCATED

BASIS OF ELEV; Elevations are based on an N.G.S. OPUS Correction. LOCATION: LAT. 40°46'03.41" LONG. 103°46'26.97" (Tristate Aluminum Cap) NAVD 88 Elev. 4750.22'

NAD 83 (SURFACE LOCATION)	
LATITUDE = 40°46'01.35"	(40.767041)
LONGITUDE = 103°46'53.08"	(103.781411)
NAD 27 (SURFACE LOCATION)	
LATITUDE = 40°46'01.40"	(40.767055)
LONGITUDE = 103°46'51.27"	(103.780908)

TRI STATE LAND SURVEYING & CONSULTING

180 NORTH VERNAL AVE. - VERNAL, UTAH 84078
(435) 781-2501

DATE SURVEYED: 06-02-14	SURVEYED BY: C.S.	SHEET 11
DATE DRAWN: 07-01-14	DRAWN BY: V.H.	
REVISED: 10-27-14 M.W.	SCALE: 1" = 1000'	

