

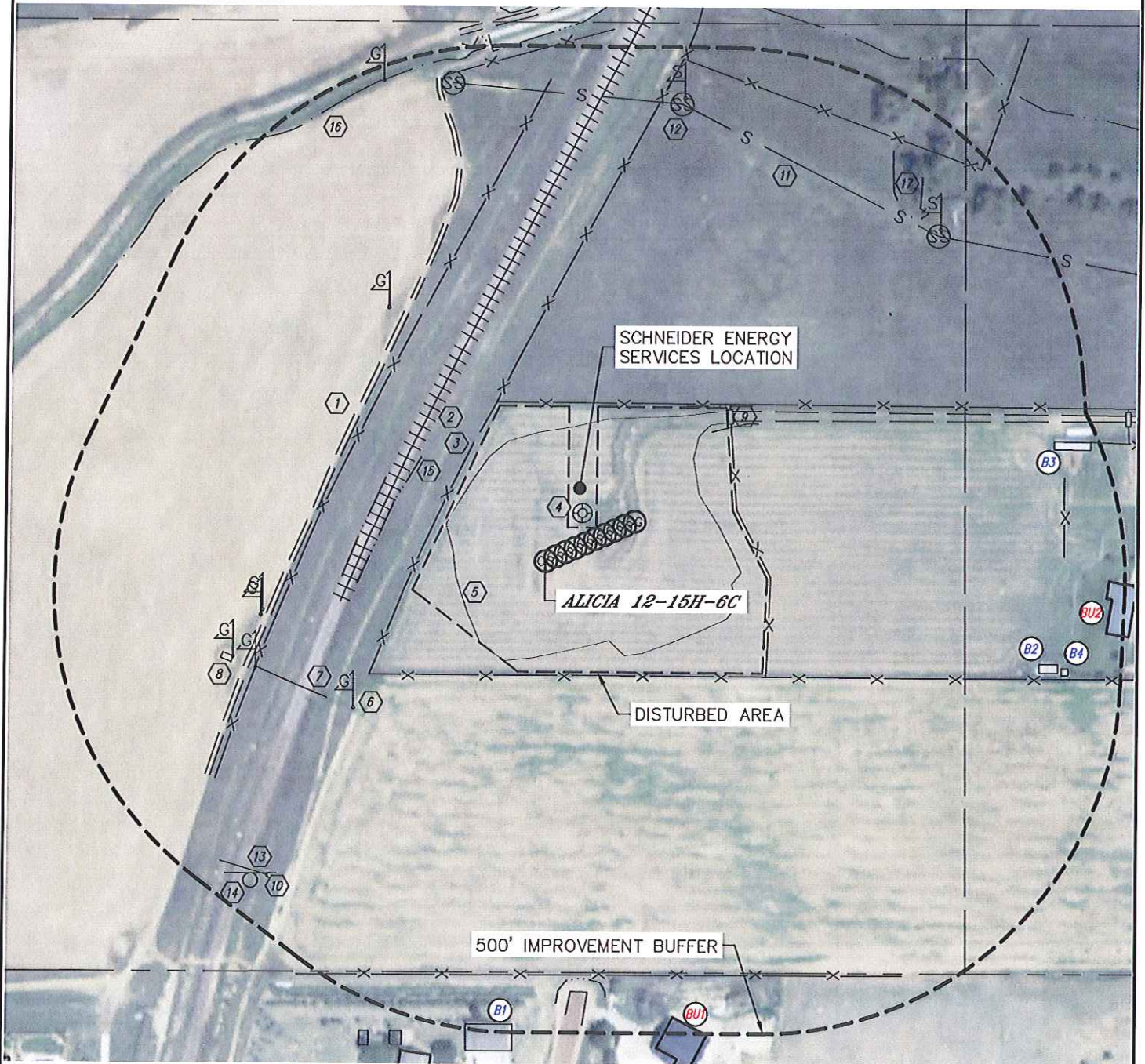


Lat40°, Inc. 1635 Foxtrail Drive, Suite 325 Loveland, CO 970-776-3321

## LOCATION DRAWING

ALICIA HZ PAD

SECTION: 12  
TOWNSHIP: 1S  
RANGE: 68W



SHEET 1 OF 2

DATE: 9/04/2014  
PROJECT#: 2013026



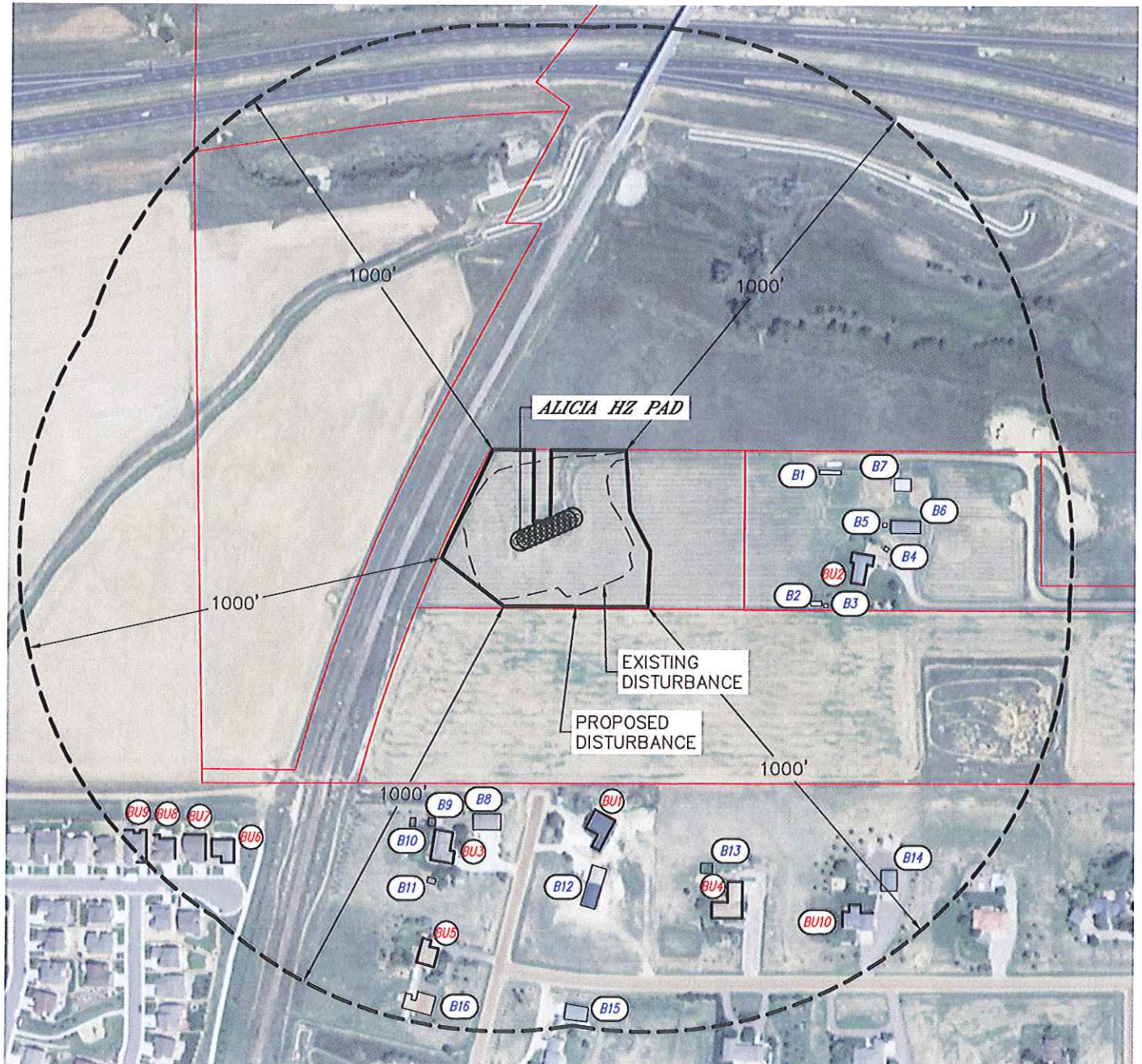


Lat40°, Inc. 1635 Foxtrail Drive, Suite 325 Loveland, CO 970-776-3321

## URBAN MITIGATION AREA MAP

ALICIA HZ PAD

SECTION: 12  
TOWNSHIP: 1S  
RANGE: 68W



### LEGEND

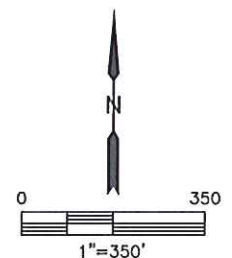
PROPERTY LINE



BUILDING



BUILDING UNIT



DATE: 9/04/2014  
PROJECT#: 2013026



Lat40°, Inc. 1635 Foxtrail Drive, Suite 325 Loveland, CO 970-776-3321

## LOCATION DRAWING

### IMPROVEMENTS:

(MEASURED FROM THE PROPOSED ALICIA 12-15H-6C WELL LOCATION)

- ⓑⓞⓞ BUILDING UNIT BU1 ±657' SE, BU2 ±785' E,
- ⓑⓞⓞ BUILDING B1 ±643' SW, B2 ±704' SE, B3 ±726' NE, B4 ±735' SE,
- ① ROAD 322' NW, 325' NE, ±589' S (MADISON CT.)
- ② RAIL ROAD 237' NW
- ③ FENCE 163', 313' & 689' NW, 158' & ±573' S, 219' N, 275' & 718' NE, ±724' E
- ④ EX. WELL HEAD 84' NE
- ⑤ EX. EDGE OF DISTURBANCE 125' SW, 128' SE, 178' NW, 233' NE
- ⑥ GAS MARKER 336', 400', 404', 428' & 455' SW, 415' & 706' NW
- ⑦ GAS LINE 359' SW
- ⑧ GAS VALVE 455' SW
- ⑨ CATTLE GUARD 317' NE
- ⑩ CONCRETE STRUCTURE 577' SW
- ⑪ SEWER LINE 650' NE
- ⑫ SEWER MANHOLE 661' & 708' NE, 676' NW
- ⑬ EXPOSED PIPE 582' SW
- ⑭ SIGN 596' SW
- ⑮ DITCH 224', 252', 708' & 711' NW, 291' & 293' NE, 580' S
- ⑯ CANAL 698' NW
- ⑰ LOW AREA 696' NE

#### NEAREST CULTURAL ITEM:

BUILDING ±594' NE, BUILDING UNIT ±657' SE, HIGH OCCUPANCY BUILDING UNIT ±1903' SW,  
DESIGNATED OUTSIDE ACTIVITY AREA 5280'+, PUBLIC ROAD ±589' S (MADISON CT),  
ABOVE GROUND UTILITY ±1097' SE, RAILROAD ±237' NW, PROPERTY LINE ±163' NW

(DISTANCES MEASURED FROM THE CENTER OF THE PROPOSED WELL HEAD OR LIMITS OF THE  
PROPOSED PRODUCTION FACILITY, MLVT CLOSEST TO THE REFERENCED CULTURAL ITEM)

*SHEET 2 OF 2*

DATE: 8/26/2014  
PROJECT#: 2013026