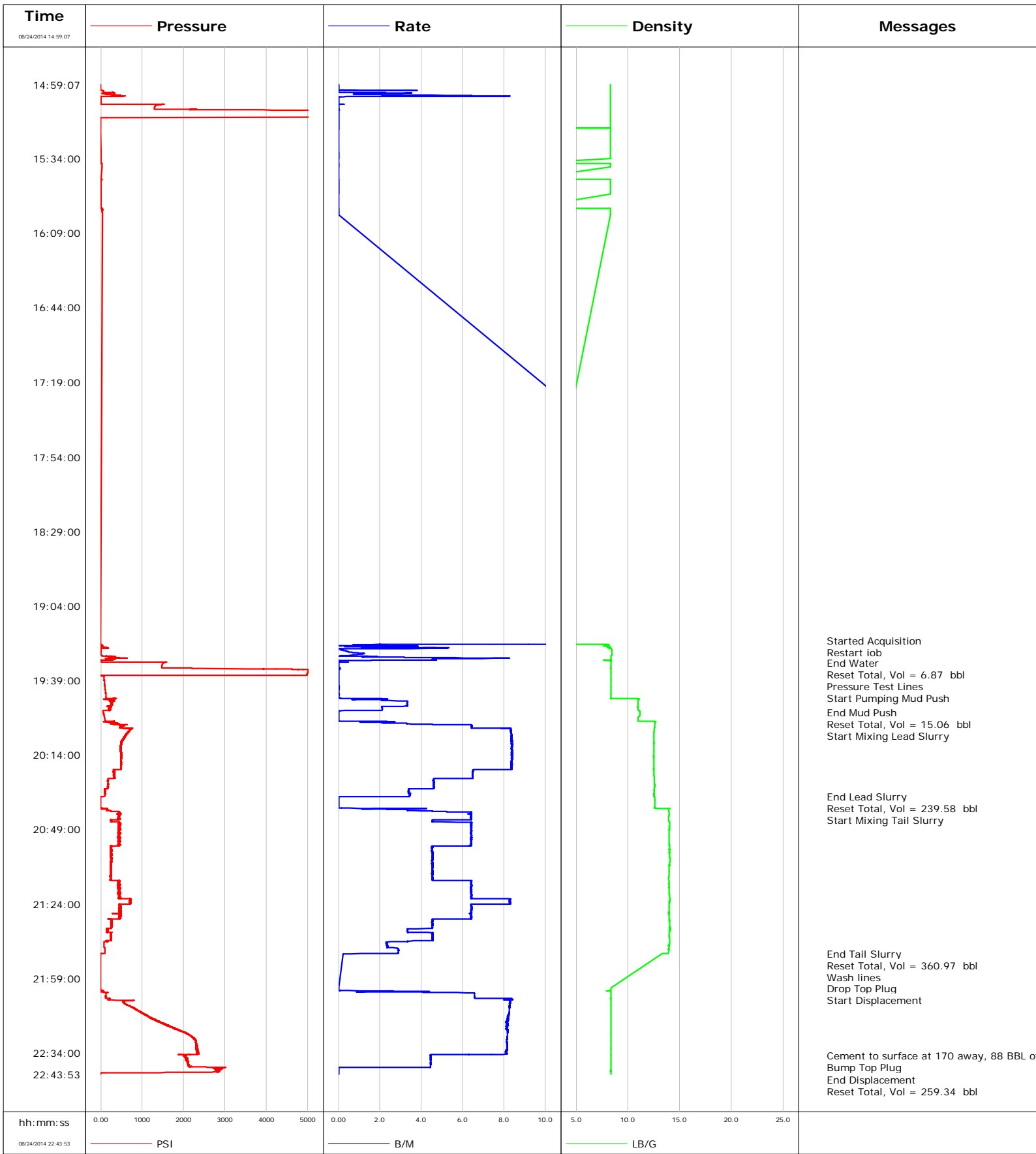


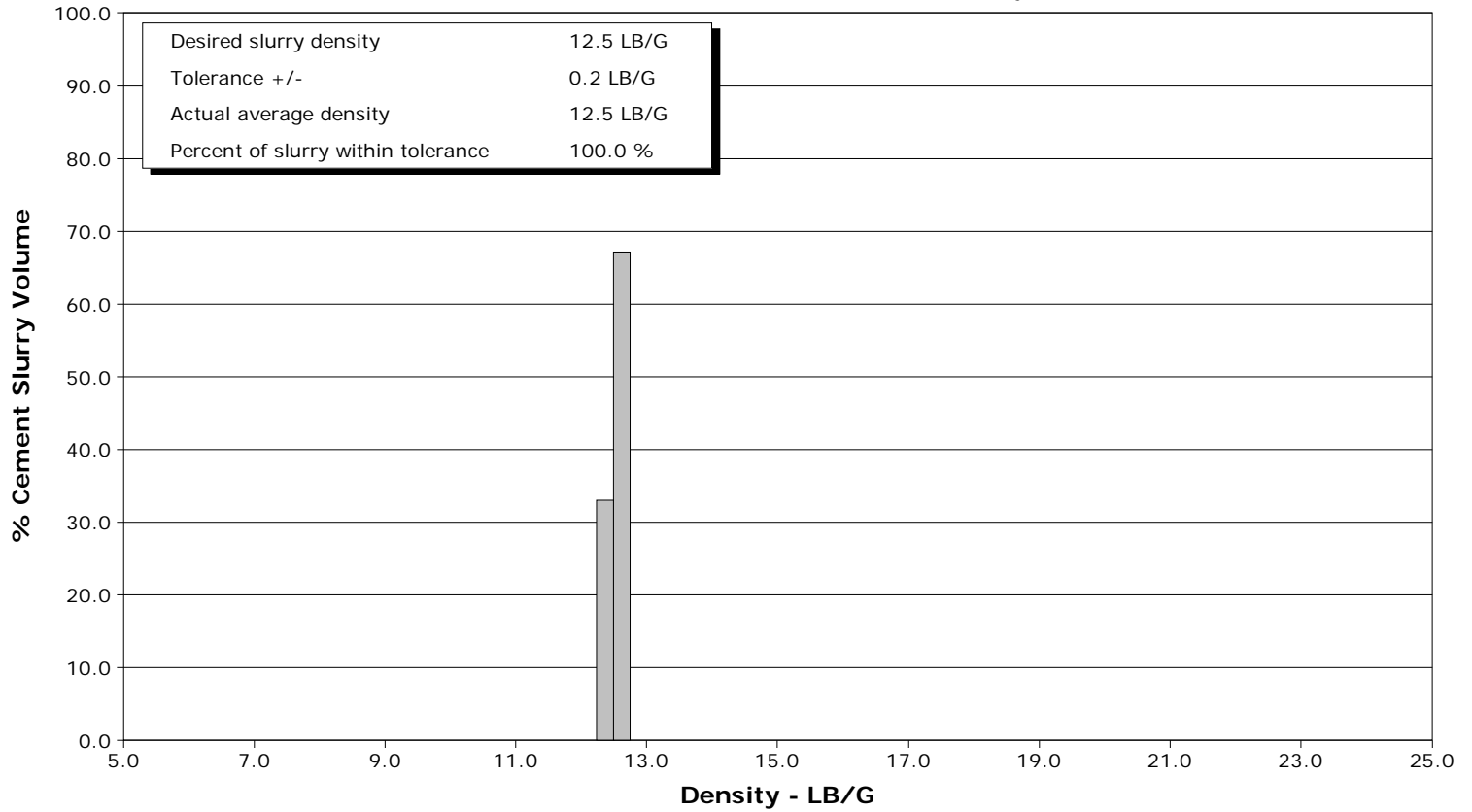
<b>Well</b>	Hiner 36C-24W	<b>Client</b>	Extraction Oil Gas
<b>Field</b>	Podjom-Mikhaylovskoe	<b>SIR No.</b>	D2IK-00126
<b>Engineer</b>	Anthony Fowler	<b>Job Type</b>	5 1/2 LS
<b>Country</b>	United States	<b>Job Date</b>	08-23-2014



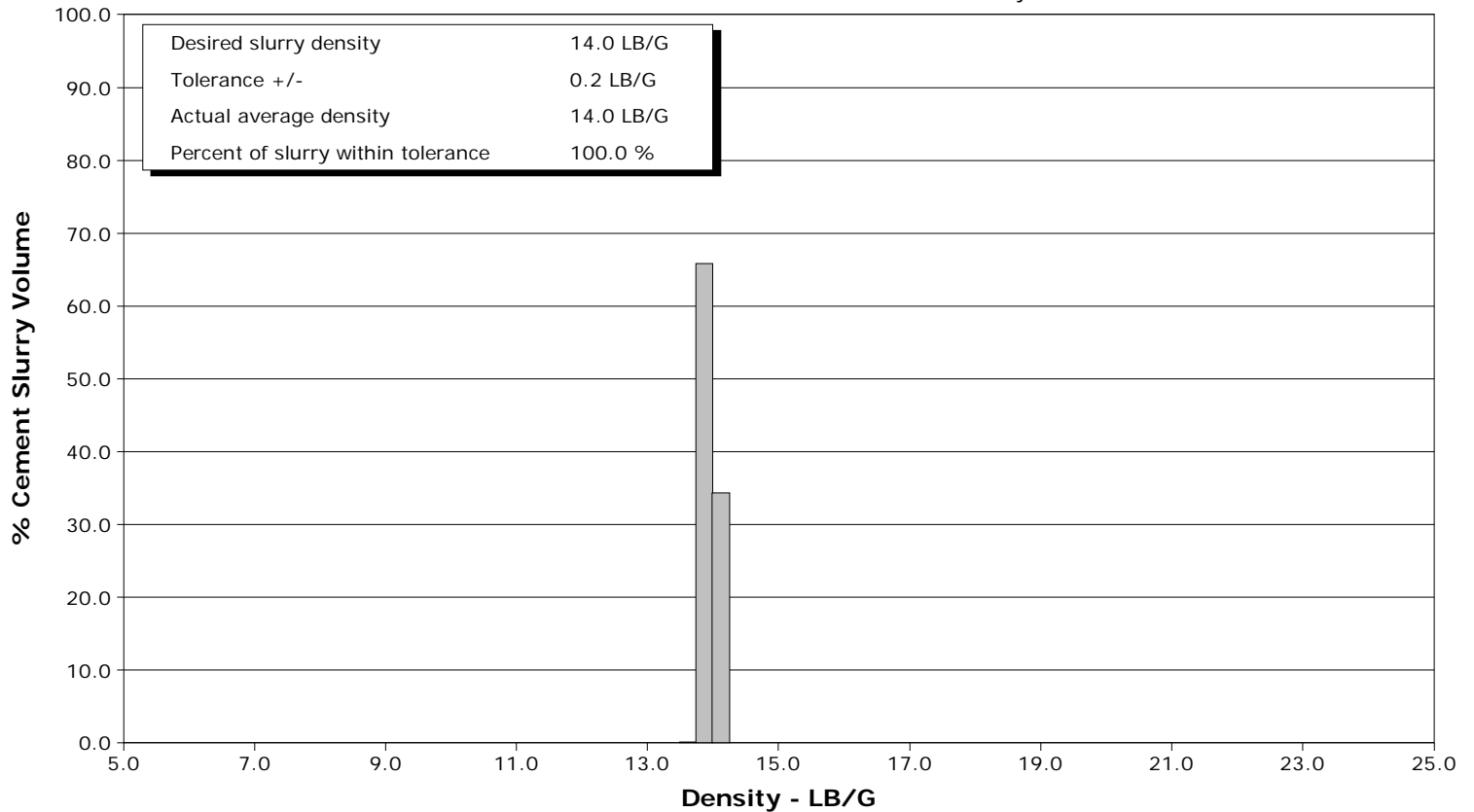
**Well** Hiner 36C-24W  
**Field** Podjom-Mikhaylovskoe  
**Engineer** Anthony Fowler  
**Country** United States

**Client** Extraction Oil Gas  
**SIR No.** D2IK-00126  
**Job Type** 5 1/2 LS  
**Job Date** 08-23-2014

Lead Slurry - 08/24/2014 19:58:59 to 08/24/2014 20:33:30



Tail Slurry - 08/24/2014 20:40:16 to 08/24/2014 21:47:17



Customer Extraction Oil & Gas					Job Number D21K-00126		
Well Hiner 36C-24W		Location (legal) Xtreme 7			Schlumberger Location Rock Springs		Job Start Aug/23/2014
Field Podjom-Mikhaylovskoe		Formation Name/Type Dirty-Sandstone		Deviation	Bit Size	Well MD 11750.0 ft	Well TVD
County Weld		State/Province Colorado		BHP	BHST	BHCT	Pore Press. Gradient
Well Master		API/UWI					
Rig Name Xtreme 7		Drilled For Oil & Gas		Service Via Land		Casing/Liner	
				Depth, ft	Size, in	Weight, lb/ft	Grade
							Thread
Offshore Zone		Well Class New		Well Type Development		11747.0	5.500
						20.0	P110
						0.0	BUTT
Drilling Fluid Type		Max. Density		Plastic Viscosity		Tubing/Drill Pipe	
						Depth,	Size,
						Weight,	Grade
							Thread
Service Line Cementing		Job Type 5 1/2 LS					
Max. Allowed Tub. Press		Max. Allowed Ann. Press		WH Connection Single Cement head		Perforations/Open Hole	
						Top,	Bottom,
						No. of Shots	Total Interval
Service Instructions							Diameter
						Treat Down Casing	Displacement 258.0 bbl
						Packer Type	Packer Depth
						Tubing Vol.	Casing Vol.
						Annular Vol.	Openhole Vol.
Casing/Tubing Secured <input checked="" type="checkbox"/>		1 Hole Vol. Circulated prior to Cement <input checked="" type="checkbox"/>		Casing Tools		Squeeze Job	
Lift Pressure		Shoe Type Guide		Squeeze Type			
Pipe Rotated <input type="checkbox"/>		Pipe Reciprocated <input type="checkbox"/>		Shoe Depth 11747.0 ft		Tool Type	
No. Centralizers 90		Top Plugs 1		Bottom Plugs		Stage Tool Type	
						Tool Depth	
Cement Head Type Single		Stage Tool Depth		Tail Pipe Size			
Job Scheduled For Aug/23/2014		Arrived on Location Aug/23/2014		Leave Location Aug/23/2014		Collar Type Float	
						Collar Depth 11703.0 ft	
						Sqz. Total Vol.	
Date	Time 24-hr clock	Treating Pressure PSI	Flow Rate B/M	Density LB/G	Volume BBL	Message	
08/24/2014	14:59:07	-3	0.0	8.32	0.0		
08/24/2014	15:01:47	-4	0.0	8.32	0.0		
08/24/2014	15:04:27	310	6.4	8.32	4.5		
08/24/2014	15:07:07	2	0.0	8.32	7.2		
08/24/2014	15:09:47	1300	0.0	8.32	7.2		
08/24/2014	15:12:27	5253	0.0	8.32	7.2		
08/24/2014	15:15:07	-6	0.0	8.32	7.2		
08/24/2014	15:17:47	-5	0.0	8.32	7.2		
08/24/2014	15:31:07	1	0.0	8.32	7.2		
08/24/2014	15:33:47	1	0.0	8.32	7.2		
08/24/2014	15:36:27	30	0.0	8.32	7.2		
08/24/2014	15:44:27	-1	0.0	8.32	7.2		
08/24/2014	15:47:07	2	0.0	8.32	7.2		
08/24/2014	15:49:47	0	0.0	8.32	7.2		
08/24/2014	15:57:47	36	0.0	8.32	7.2		
08/24/2014	19:21:05					Restart job	
08/24/2014	19:21:05	-1	25.0	0.02	7.6		
08/24/2014	19:23:07	5	0.3	8.00	33.6		
08/24/2014	19:25:47	-0	0.6	8.47	37.4		
08/24/2014	19:28:27	441	6.1	8.34	40.8		
08/24/2014	19:30:42					End Water	

Well		Field		Job Start	Customer		Job Number
Hiner 36C-24W		Podjom-Mikhaylovskoe		Aug/23/2014	Extraction Oil & Gas		D2IK-00126
Date	Time 24-hr clock	Treating Pressure PSI	Flow Rate B/M	Density LB/G	Volume BBL	Message	
08/24/2014	19:30:43					Reset Total, Vol = 6.87 bbl	
08/24/2014	19:30:43	1520	0.0	8.34	46.9		
08/24/2014	19:30:52					Pressure Test Lines	
08/24/2014	19:30:52	1507	0.0	8.34	0.0		
08/24/2014	19:31:07	1494	0.0	8.34	0.0		
08/24/2014	19:33:47	4659	0.0	8.34	0.0		
08/24/2014	19:36:27	4976	0.0	8.34	0.1		
08/24/2014	19:39:07	84	0.0	8.34	0.1		
08/24/2014	19:39:40					Start Pumping Mud Push	
08/24/2014	19:39:40	86	0.0	8.34	0.1		
08/24/2014	19:41:47	97	0.0	8.34	0.1		
08/24/2014	19:44:27	112	0.0	8.34	0.2		
08/24/2014	19:47:07	130	0.0	8.34	0.2		
08/24/2014	19:49:47	272	3.3	10.98	6.3		
08/24/2014	19:52:27	233	2.1	10.97	13.5		
08/24/2014	19:54:08					End Mud Push	
08/24/2014	19:54:08	62	0.0	11.15	15.1		
08/24/2014	19:54:09					Reset Total, Vol = 15.06 bbl	
08/24/2014	19:54:09	63	0.0	11.15	15.1		
08/24/2014	19:55:07	75	0.0	11.15	0.0		
08/24/2014	19:57:47	105	0.0	10.97	0.0		
08/24/2014	19:58:59					Start Mixing Lead Slurry	
08/24/2014	19:58:59	204	2.1	12.59	1.5		
08/24/2014	20:00:27	515	6.4	12.60	8.7		
08/24/2014	20:03:07	660	8.3	12.52	29.0		
08/24/2014	20:05:47	562	8.4	12.49	51.3		
08/24/2014	20:08:27	482	8.4	12.53	73.6		
08/24/2014	20:11:07	481	8.4	12.49	95.9		
08/24/2014	20:13:47	486	8.4	12.50	118.2		
08/24/2014	20:16:27	500	8.4	12.52	140.6		
08/24/2014	20:19:07	484	8.4	12.51	162.9		
08/24/2014	20:21:47	330	6.5	12.48	183.6		
08/24/2014	20:24:27	342	6.5	12.55	200.9		
08/24/2014	20:27:07	177	4.6	12.56	214.2		
08/24/2014	20:29:47	175	4.6	12.56	226.4		
08/24/2014	20:32:27	105	3.4	12.52	235.7		
08/24/2014	20:33:30					End Lead Slurry	
08/24/2014	20:33:30	99	3.4	12.53	239.3		
08/24/2014	20:33:49					Reset Total, Vol = 239.58 bbl	
08/24/2014	20:33:49	-4	0.0	12.61	239.6		
08/24/2014	20:35:07	-4	0.0	12.59	0.0		
08/24/2014	20:37:47	-3	0.0	12.57	0.0		
08/24/2014	20:40:16					Start Mixing Tail Slurry	
08/24/2014	20:40:16	249	4.4	13.93	3.7		
08/24/2014	20:40:27	238	4.5	13.93	4.5		
08/24/2014	20:43:07	434	6.4	13.95	21.1		
08/24/2014	20:45:47	446	6.4	14.04	36.2		
08/24/2014	20:48:27	444	6.4	14.01	53.3		
08/24/2014	20:51:07	432	6.4	14.00	70.4		
08/24/2014	20:53:47	437	6.4	13.98	87.5		
08/24/2014	20:56:27	429	6.4	14.00	104.6		
08/24/2014	20:59:07	239	4.5	14.02	117.2		
08/24/2014	21:01:47	257	4.5	14.03	129.2		
08/24/2014	21:04:27	235	4.5	14.04	141.3		

Well		Field		Job Start	Customer		Job Number
Hiner 36C-24W		Podjom-Mikhaylovskoe		Aug/23/2014	Extraction Oil & Gas		D2IK-00126
Date	Time 24-hr clock	Treating Pressure PSI	Flow Rate B/M	Density LB/G	Volume BBL	Message	
08/24/2014	21:09:47	243	4.5	13.98	165.5		
08/24/2014	21:12:27	231	4.5	13.94	177.6		
08/24/2014	21:15:07	421	6.4	13.96	193.8		
08/24/2014	21:17:47	453	6.4	13.99	210.8		
08/24/2014	21:20:27	447	6.4	14.01	227.9		
08/24/2014	21:23:07	714	8.3	14.00	247.9		
08/24/2014	21:25:47	480	6.4	13.97	266.8		
08/24/2014	21:28:27	492	6.4	13.95	284.0		
08/24/2014	21:31:07	262	4.6	13.97	300.9		
08/24/2014	21:33:47	244	4.5	14.03	313.0		
08/24/2014	21:36:27	171	3.4	14.05	324.0		
08/24/2014	21:39:07	235	4.5	13.98	335.0		
08/24/2014	21:41:47	77	2.8	14.04	346.6		
08/24/2014	21:44:27	73	2.4	13.95	352.8		
08/24/2014	21:47:07	98	2.9	13.92	360.5		
08/24/2014	21:47:17					End Tail Slurry	
08/24/2014	21:47:17	86	2.8	13.58	360.9		
08/24/2014	21:47:18					Reset Total, Vol = 360.97 bbl	
08/24/2014	21:47:18	27	2.8	13.45	361.0		
08/24/2014	21:47:23					Wash lines	
08/24/2014	21:47:23	-6	0.6	13.28	0.1		
08/24/2014	22:03:26					Drop Top Plug	
08/24/2014	22:03:26	-6	0.0	8.35	0.2		
08/24/2014	22:03:27					Start Displacement	
08/24/2014	22:03:27	-5	0.0	8.35	0.2		
08/24/2014	22:05:47	123	6.6	8.35	3.9		
08/24/2014	22:08:27	212	8.4	8.33	21.7		
08/24/2014	22:11:07	610	8.3	8.35	43.8		
08/24/2014	22:13:47	862	8.2	8.35	65.9		
08/24/2014	22:16:27	1108	8.2	8.35	87.8		
08/24/2014	22:19:07	1363	8.2	8.35	109.6		
08/24/2014	22:21:47	1685	8.2	8.35	131.3		
08/24/2014	22:24:27	2050	8.2	8.35	153.1		
08/24/2014	22:27:07	2247	8.1	8.35	174.8		
08/24/2014	22:29:47	2291	8.1	8.35	196.5		
08/24/2014	22:32:27	2305	8.1	8.35	218.2		
08/24/2014	22:35:07	2054	4.5	8.35	238.4		
08/24/2014	22:35:10					Cement to surface at 170 away, 88 BBL of cement to	
08/24/2014	22:35:10	2038	4.5	8.35	238.6		
08/24/2014	22:37:47	2110	4.4	8.35	250.3		
08/24/2014	22:40:27	2139	4.4	8.35	262.1		
08/24/2014	22:40:42					Bump Top Plug	
08/24/2014	22:40:42	2703	3.1	8.35	263.2		
08/24/2014	22:40:47					End Displacement	
08/24/2014	22:40:47	2700	0.1	8.35	263.3		
08/24/2014	22:40:50					Reset Total, Vol = 259.34 bbl	
08/24/2014	22:40:50	2743	0.0	8.35	263.3		
08/24/2014	22:43:07	1950	0.0	8.35	0.0		
08/24/2014	22:43:27					Floats holding 2 1/2 BBL back	
08/24/2014	22:43:27	-10	0.0	8.35	0.0		
08/24/2014	22:43:50					End Job	
08/24/2014	22:43:50	-8	0.0	8.35	0.0		

<b>Well</b> Hiner 36C-24W	<b>Field</b> Podjom-Mikhaylovskoe	<b>Job Start</b> Aug/23/2014	<b>Customer</b> Extraction Oil & Gas	<b>Job Number</b> D2IK-00126
------------------------------	--------------------------------------	---------------------------------	-----------------------------------------	---------------------------------

### Post Job Summary

Average Pump Rates, bbl/min				Volume of Fluid Injected, bbl			
Slurry 5.1	N2	Mud 1.1	Maximum Rate 25.0	Total Slurry 599.0	Mud 0.0	Spacer 15.0	N2
Treating Pressure Summary, psi				Breakdown Fluid			
Maximum 5290	Final 2793	Average 660	Bump Plug to	Breakdown	Type	Volume	Density
Avg. N2 Percent	Designed Slurry Volume 584.0 bbl	Displacement 259.0 bbl	Mix Water Temp	Cement Circulated to Surface? <input checked="" type="checkbox"/>	Volume 88.0 bbl		
Customer or Authorized Representative				Schlumberger Supervisor Anthony Fowler	Washed Thru Perfs <input type="checkbox"/>	To	
					Circulation Lost <input type="checkbox"/>	Job Completed <input checked="" type="checkbox"/>	
					-	-	