



# Storis E24-76-1HN

MD  
1":100'

Company: Noble Energy  
Well Name: Storis E24-76-1HN  
API: 139620  
Rig Id: H&P 330  
State: Colorado  
County/Parish: Weld  
Country: USA  
Survey Company: DrilTech, LLC  
Job number: 2014-225-IDDT-CO  
MWD Operator: Cliff Litherland  
MWD Operator: Shawn Guidry

Log measurements: 1.0  
Depth measured from: 772  
Maximum temperature:

Depth Date  
Start: 772 ft 5/24/2014  
End: 11429 ft 5/31/2014

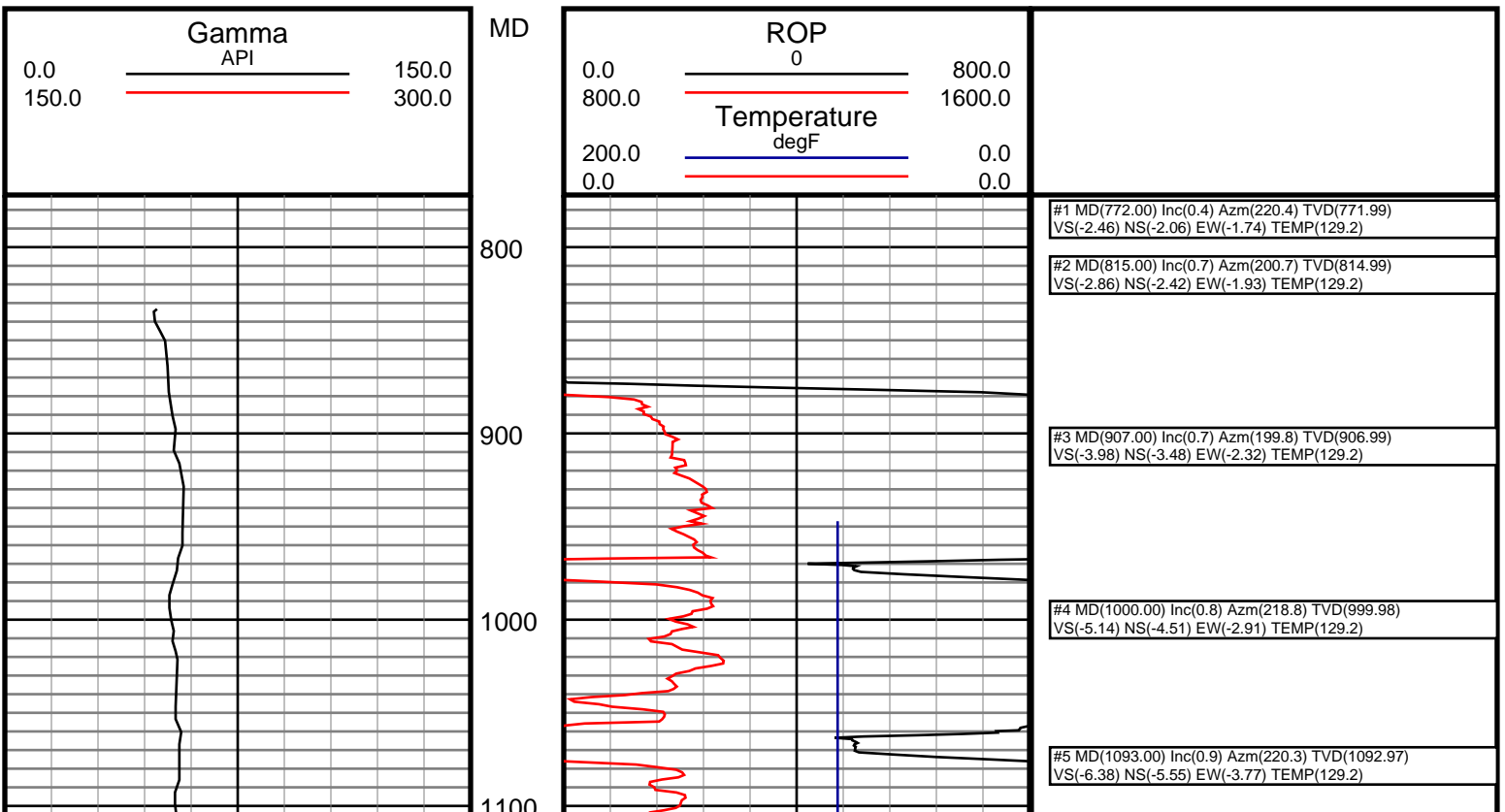
Casing Depth Size  
Surface: 772 9 5/8  
Intermediate: 7322 7

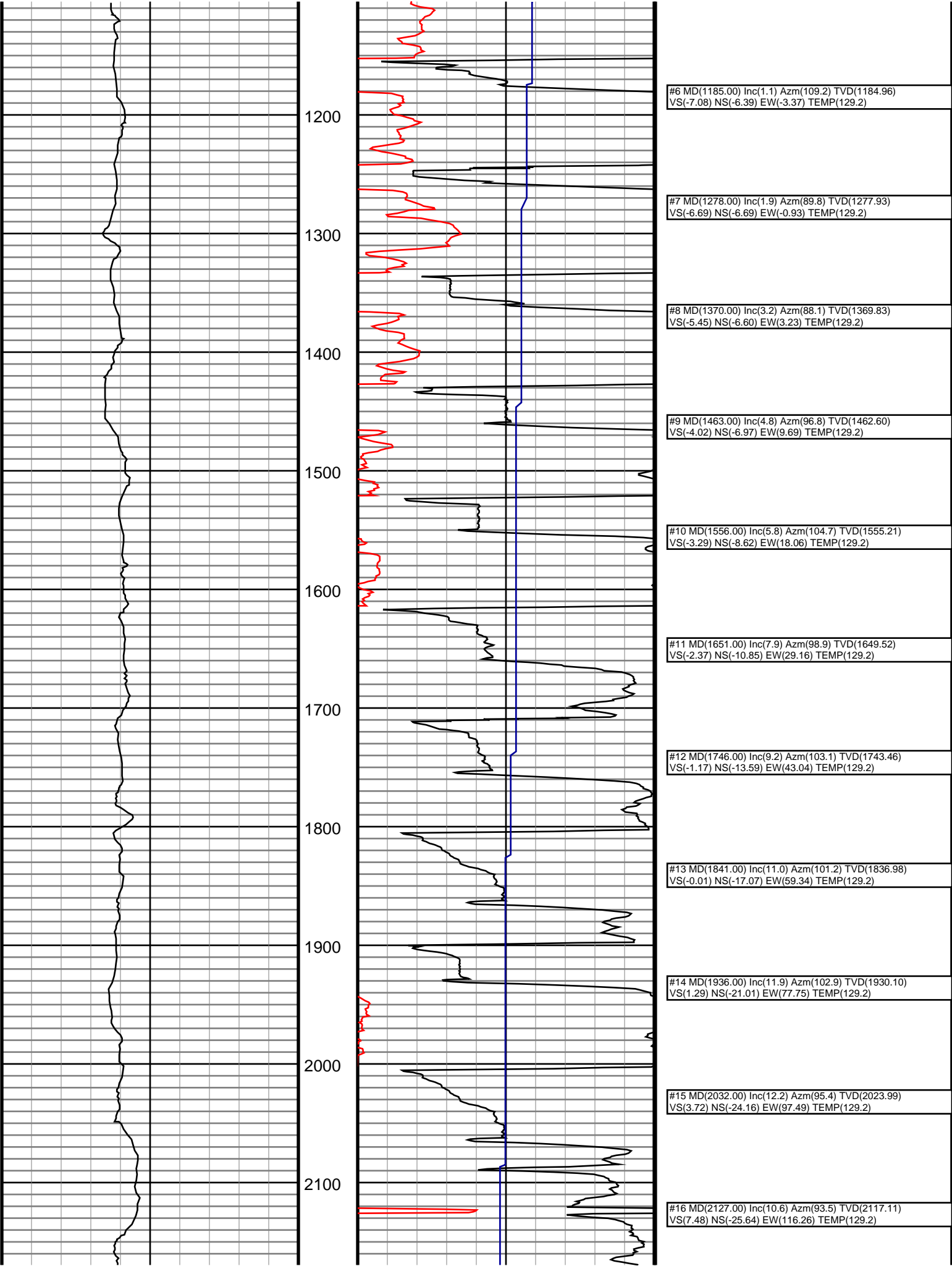
Mud Type: Water Base  
Density: 9.2  
Viscosity: 36@100  
Rm: Rmf: Rmc:

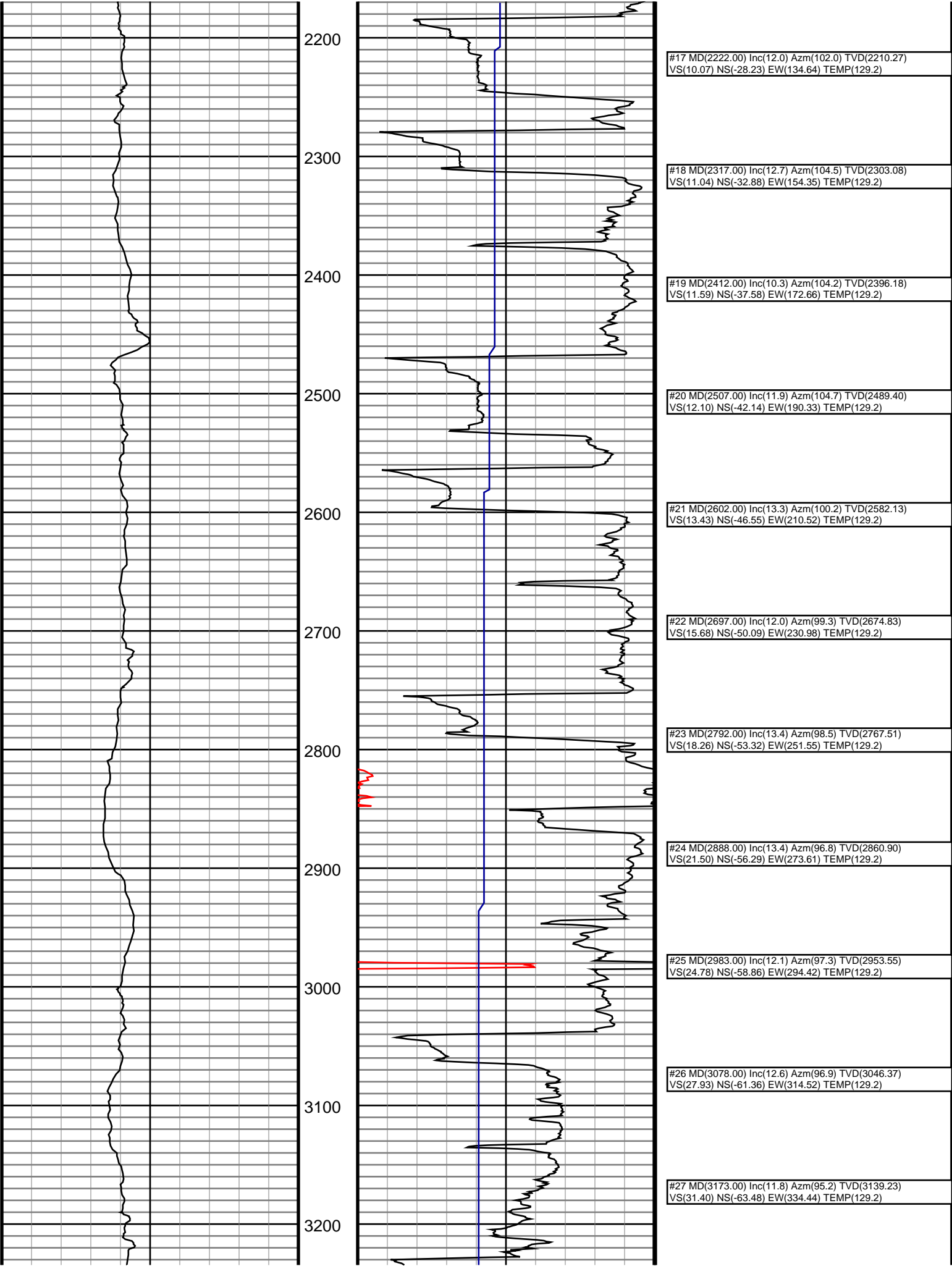
Elevations  
KB: 4721  
GL: 4091  
DF: 30

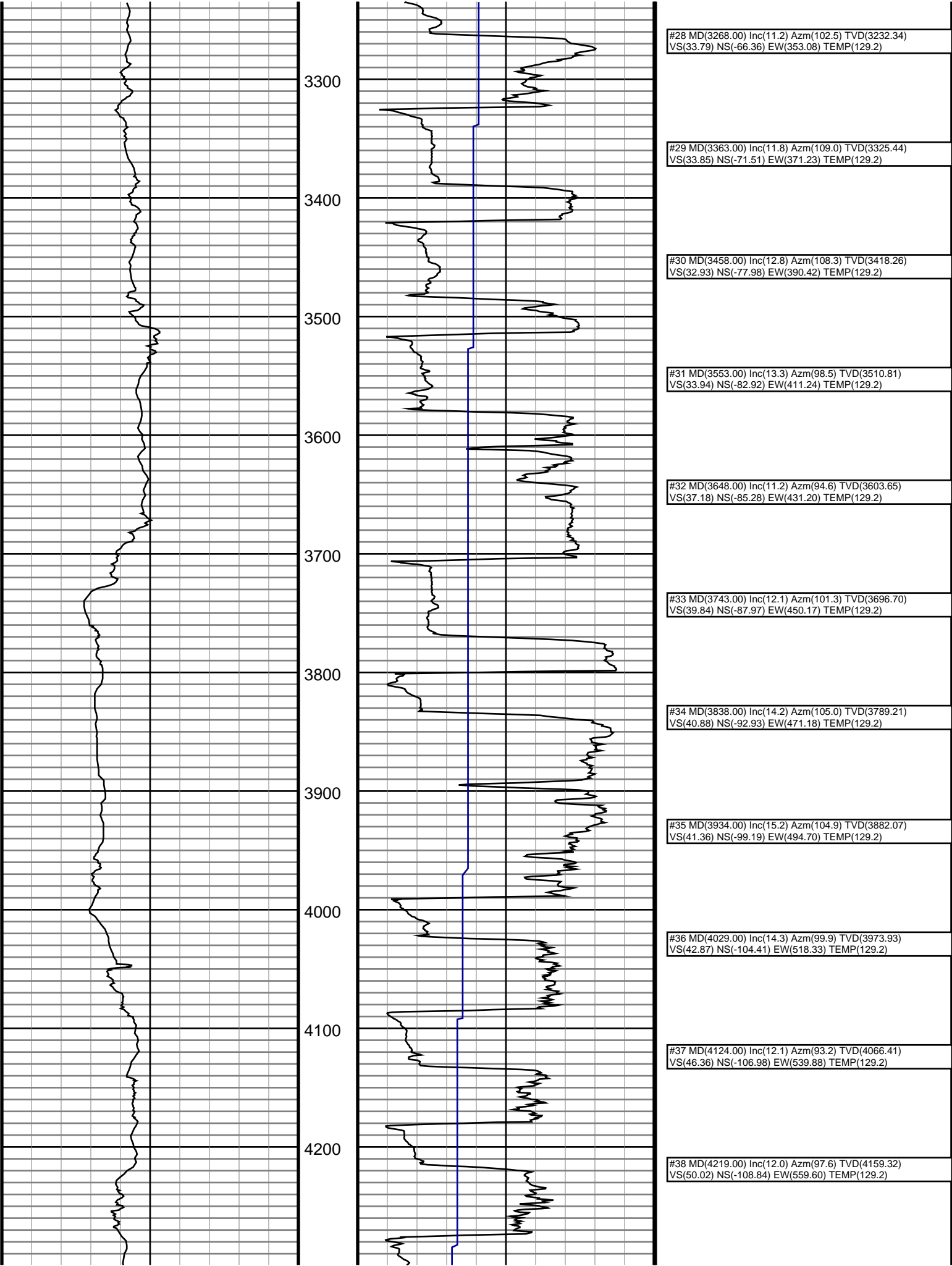
Run	Bit Size	Offsets	Gamma Survey	Start	End	Start	End
1	8 3/4	37.00	54.00	772	6140	5/24/2014	5/26/2014
2	8 3/4	44.00	60.00	6140	7031	5/26/2014	5/27/2014
3	8 3/4	44.00	60.00	7031	7322	5/27/2014	5/28/2014
4	6 1/8	52.00	70.00	7322	11429	5/29/2014	6/1/2014
5							
6							
7							
8							
9							
10							

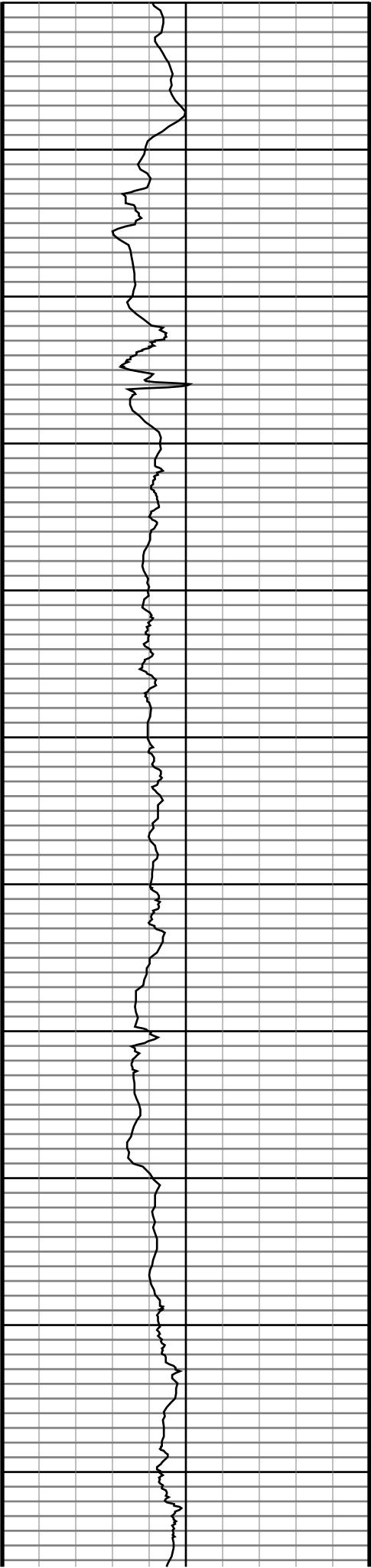
DrilTech, LLC uses its best efforts to provide its customers with accurate information and interpretations in conjunction with services performed but will not be held liable or responsible for the accuracy of such information or interpretation.











4300

4400

4500

4600

4700

4800

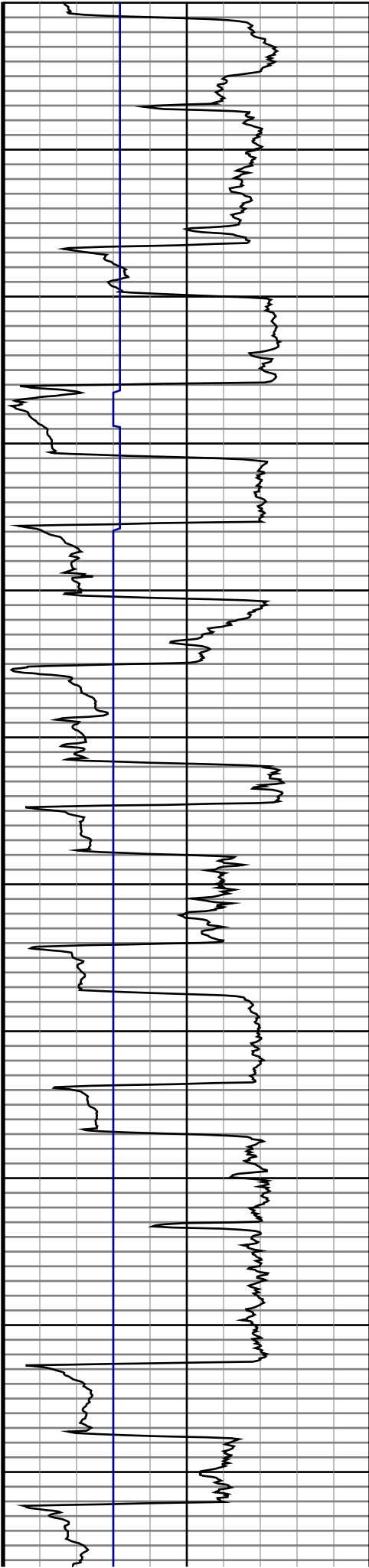
4900

5000

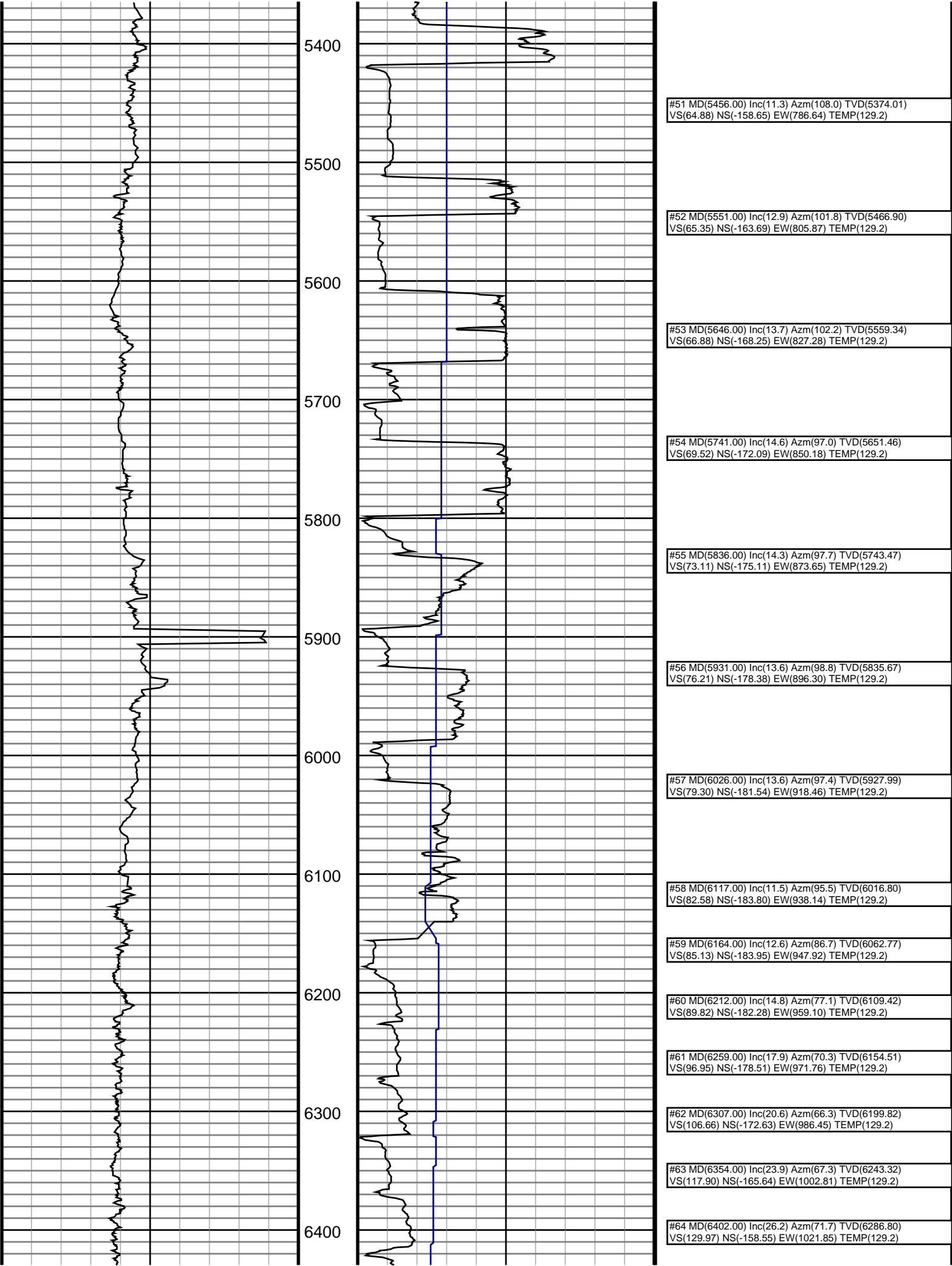
5100

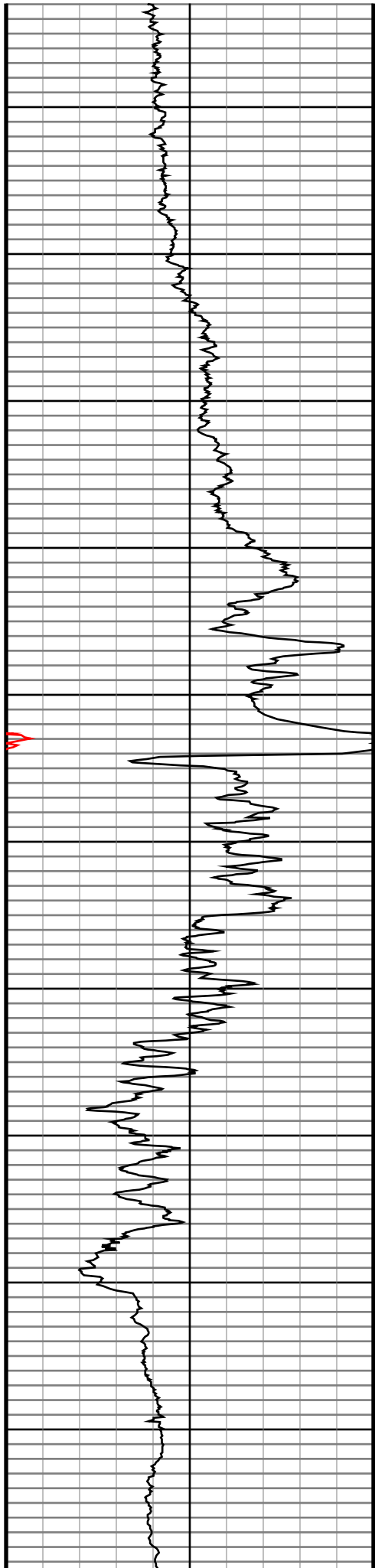
5200

5300

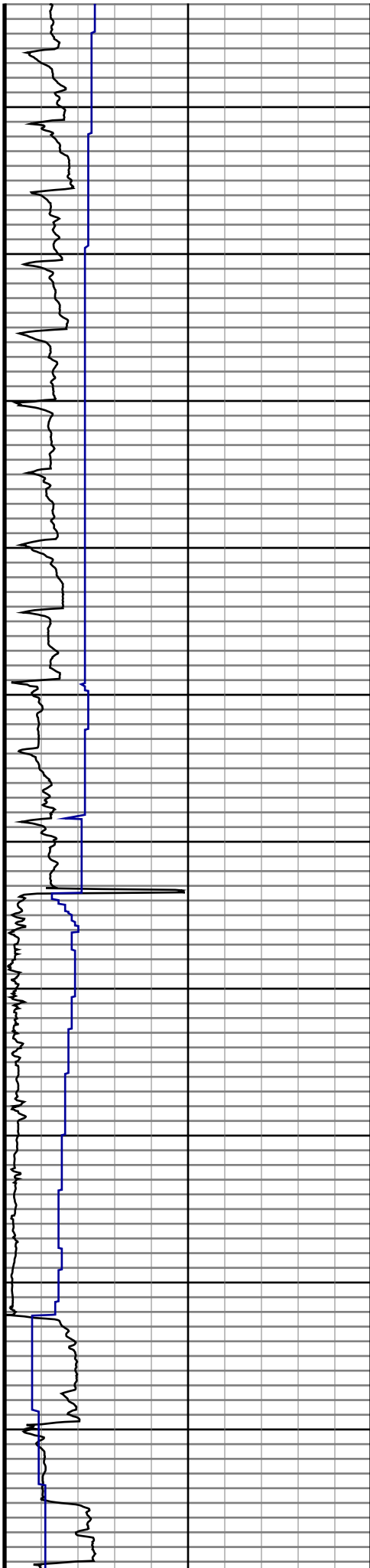


#39 MD(4314.00) Inc(12.8) Azm(100.5) TVD(4252.12) VS(52.48) NS(-112.05) EW(579.67) TEMP(129.2)
#40 MD(4409.00) Inc(10.8) Azm(96.7) TVD(4345.12) VS(54.94) NS(-115.00) EW(598.83) TEMP(129.2)
#41 MD(4504.00) Inc(9.8) Azm(102.0) TVD(4438.59) VS(56.96) NS(-117.71) EW(615.57) TEMP(129.2)
#42 MD(4600.00) Inc(10.5) Azm(102.2) TVD(4533.10) VS(58.11) NS(-121.25) EW(632.04) TEMP(129.2)
#43 MD(4695.00) Inc(10.5) Azm(107.3) TVD(4626.52) VS(58.50) NS(-125.63) EW(648.71) TEMP(129.2)
#44 MD(4790.00) Inc(10.8) Azm(105.3) TVD(4719.89) VS(58.43) NS(-130.55) EW(665.54) TEMP(129.2)
#45 MD(4885.00) Inc(11.9) Azm(105.1) TVD(4813.03) VS(58.70) NS(-135.45) EW(683.57) TEMP(129.2)
#46 MD(4980.00) Inc(11.9) Azm(99.3) TVD(4906.00) VS(60.00) NS(-139.58) EW(702.65) TEMP(129.2)
#47 MD(5076.00) Inc(12.7) Azm(101.0) TVD(4999.81) VS(62.09) NS(-143.18) EW(722.72) TEMP(129.2)
#48 MD(5171.00) Inc(9.6) Azm(100.2) TVD(5093.02) VS(63.81) NS(-146.57) EW(740.72) TEMP(129.2)
#49 MD(5266.00) Inc(9.1) Azm(103.6) TVD(5186.76) VS(64.93) NS(-149.72) EW(755.77) TEMP(129.2)
#50 MD(5361.00) Inc(9.3) Azm(106.3) TVD(5280.54) VS(65.22) NS(-153.64) EW(770.43) TEMP(129.2)

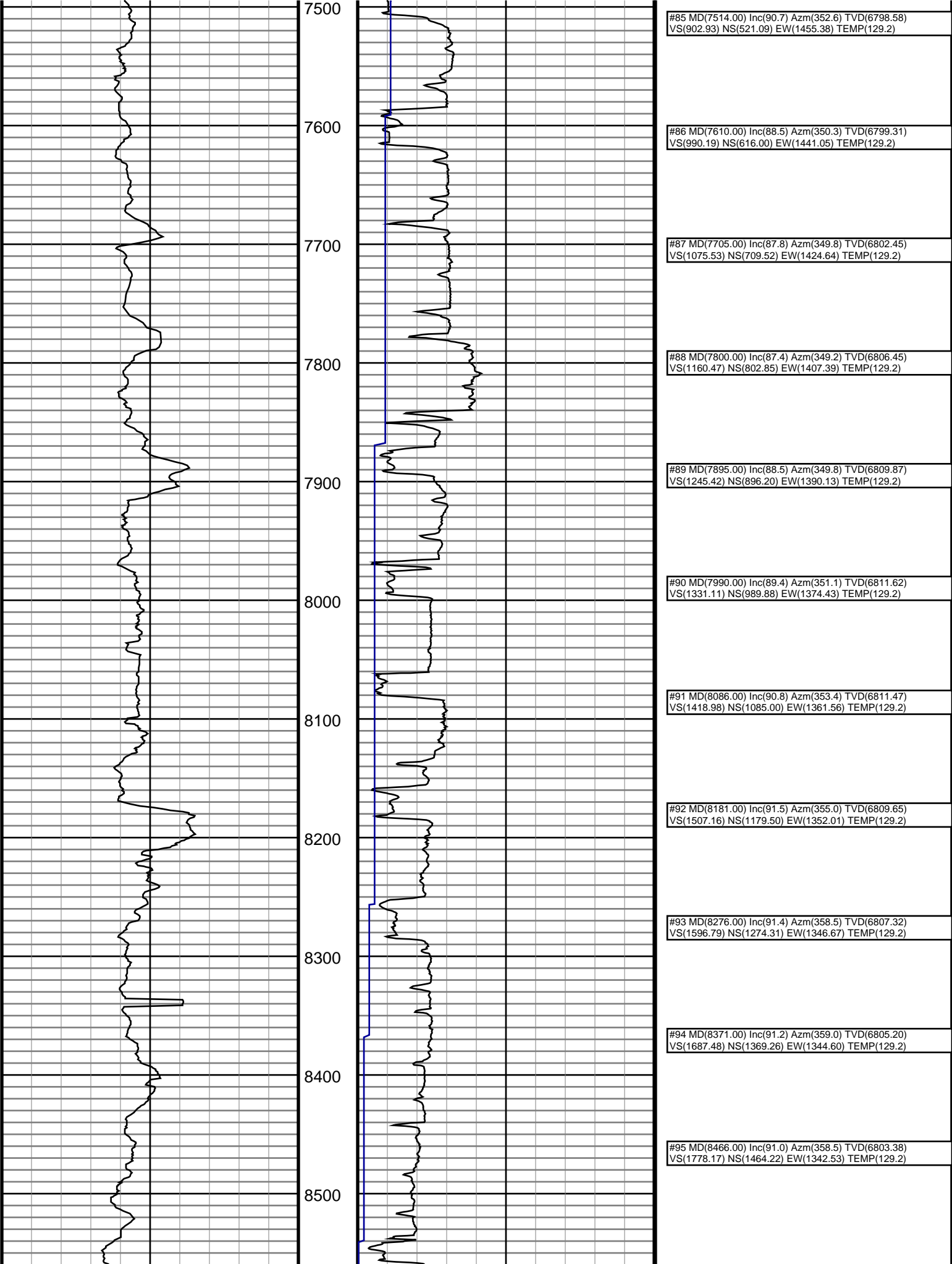


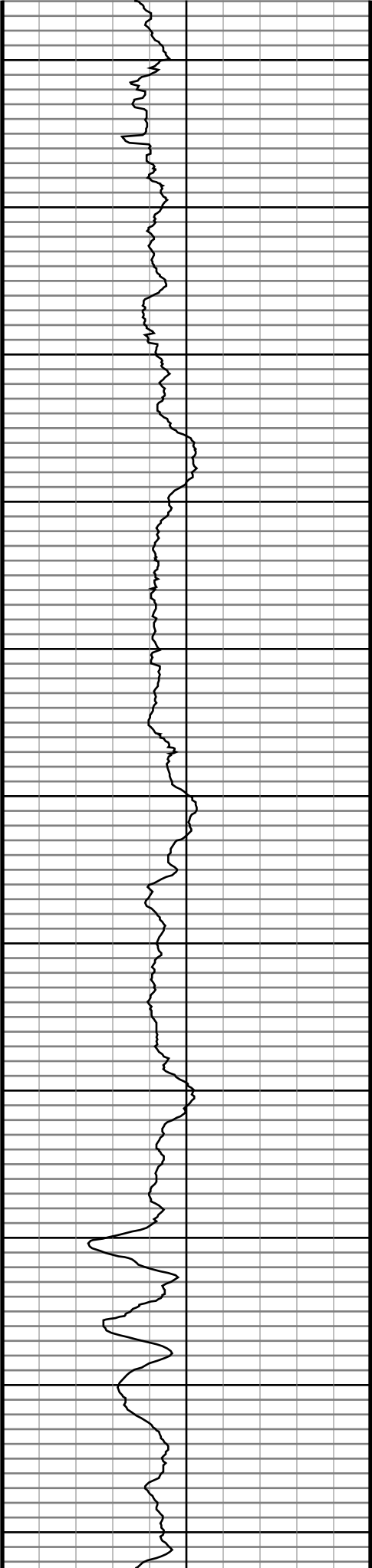


6500  
6600  
6700  
6800  
6900  
7000  
7100  
7200  
7300  
7400



#65 MD(6449.00) Inc(29.2) Azm(74.7) TVD(6328.41) VS(141.80) NS(-152.25) EW(1042.76) TEMP(129.2)
#66 MD(6497.00) Inc(32.6) Azm(73.7) TVD(6369.59) VS(154.82) NS(-145.52) EW(1066.47) TEMP(129.2)
#67 MD(6544.00) Inc(36.8) Azm(71.8) TVD(6408.23) VS(169.52) NS(-137.57) EW(1092.00) TEMP(129.2)
#68 MD(6592.00) Inc(40.8) Azm(72.8) TVD(6445.64) VS(186.19) NS(-128.45) EW(1120.64) TEMP(129.2)
#69 MD(6639.00) Inc(45.6) Azm(72.8) TVD(6479.88) VS(203.83) NS(-118.93) EW(1151.38) TEMP(129.2)
#70 MD(6687.00) Inc(49.7) Azm(68.9) TVD(6512.21) VS(224.29) NS(-107.27) EW(1184.87) TEMP(129.2)
#71 MD(6734.00) Inc(53.4) Azm(64.1) TVD(6541.46) VS(247.72) NS(-92.58) EW(1218.58) TEMP(129.2)
#72 MD(6782.00) Inc(55.7) Azm(58.7) TVD(6569.33) VS(275.18) NS(-73.87) EW(1252.87) TEMP(129.2)
#73 MD(6829.00) Inc(56.6) Azm(52.9) TVD(6595.53) VS(305.15) NS(-51.96) EW(1285.14) TEMP(129.2)
#74 MD(6877.00) Inc(57.2) Azm(48.0) TVD(6621.73) VS(338.33) NS(-26.36) EW(1316.13) TEMP(129.2)
#75 MD(6924.00) Inc(56.4) Azm(41.8) TVD(6647.48) VS(372.75) NS(1.49) EW(1343.87) TEMP(129.2)
#76 MD(6972.00) Inc(53.8) Azm(37.7) TVD(6674.95) VS(408.77) NS(31.72) EW(1369.05) TEMP(129.2)
#77 MD(7019.00) Inc(52.6) Azm(32.5) TVD(6703.11) VS(444.30) NS(62.47) EW(1390.71) TEMP(129.2)
#78 MD(7067.00) Inc(55.8) Azm(26.0) TVD(6731.20) VS(482.18) NS(96.43) EW(1409.67) TEMP(129.2)
#79 MD(7114.00) Inc(62.3) Azm(20.6) TVD(6755.34) VS(522.15) NS(133.45) EW(1425.53) TEMP(129.2)
#80 MD(7162.00) Inc(69.8) Azm(16.8) TVD(6774.80) VS(565.94) NS(174.99) EW(1439.55) TEMP(129.2)
#81 MD(7209.00) Inc(77.6) Azm(13.5) TVD(6787.99) VS(611.00) NS(218.50) EW(1451.29) TEMP(129.2)
#82 MD(7257.00) Inc(84.4) Azm(8.6) TVD(6795.51) VS(658.18) NS(264.99) EW(1460.36) TEMP(129.2)
#83 MD(7324.00) Inc(89.6) Azm(1.3) TVD(6799.01) VS(723.77) NS(331.58) EW(1466.12) TEMP(129.2)
#84 MD(7419.00) Inc(90.1) Azm(356.6) TVD(6799.23) VS(814.54) NS(426.53) EW(1464.35) TEMP(129.2)





8600

8700

8800

8900

9000

9100

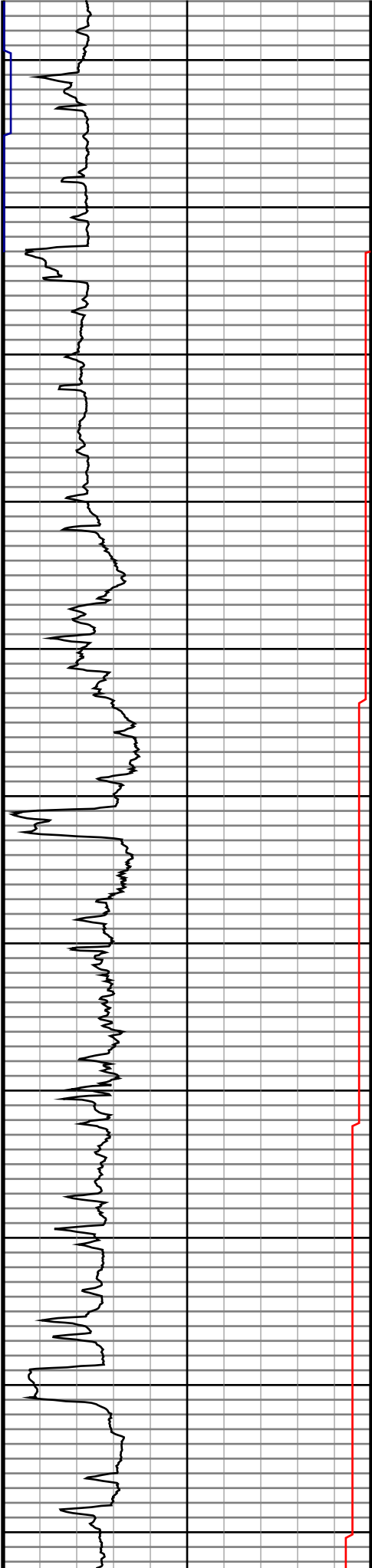
9200

9300

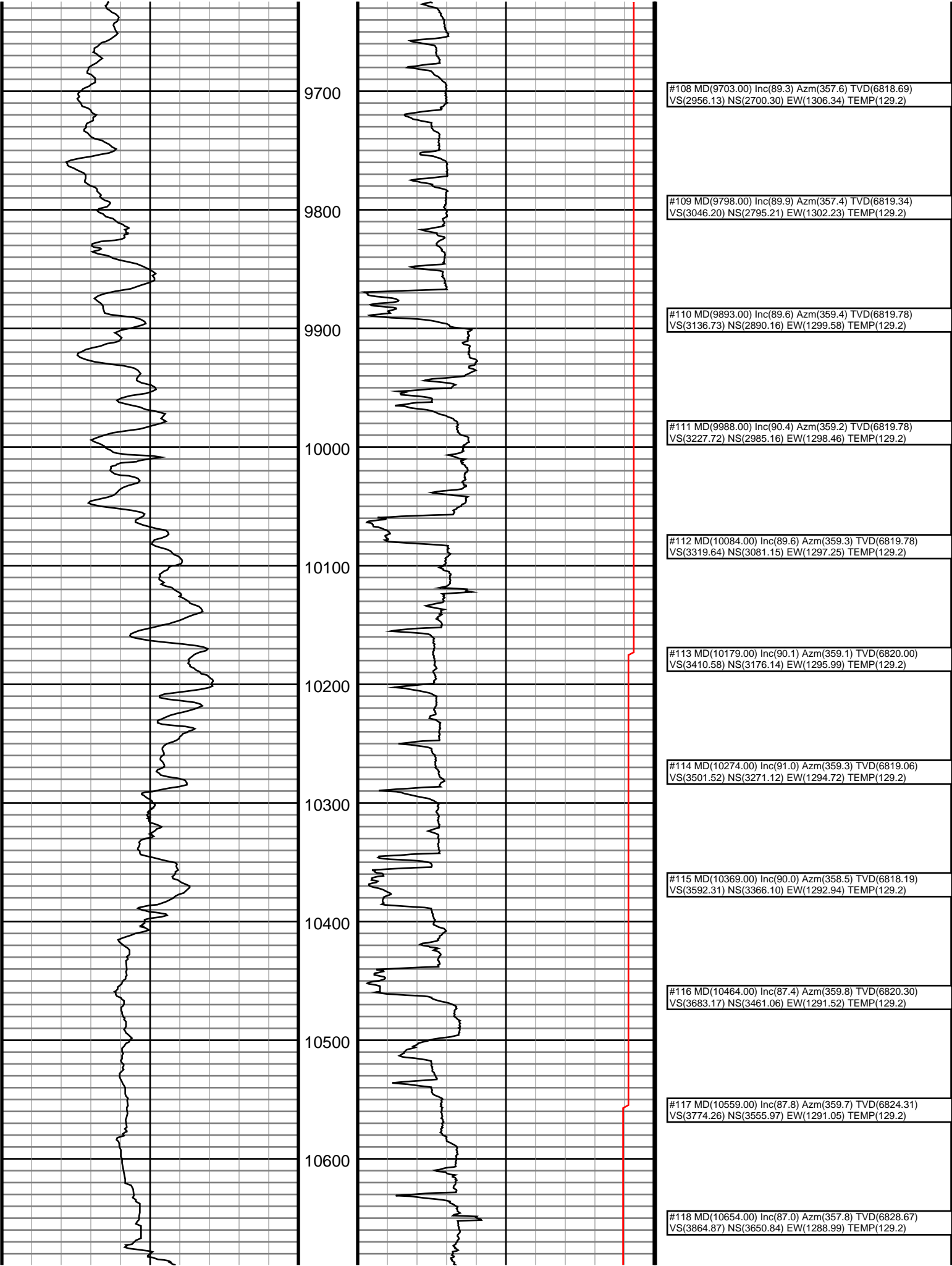
9400

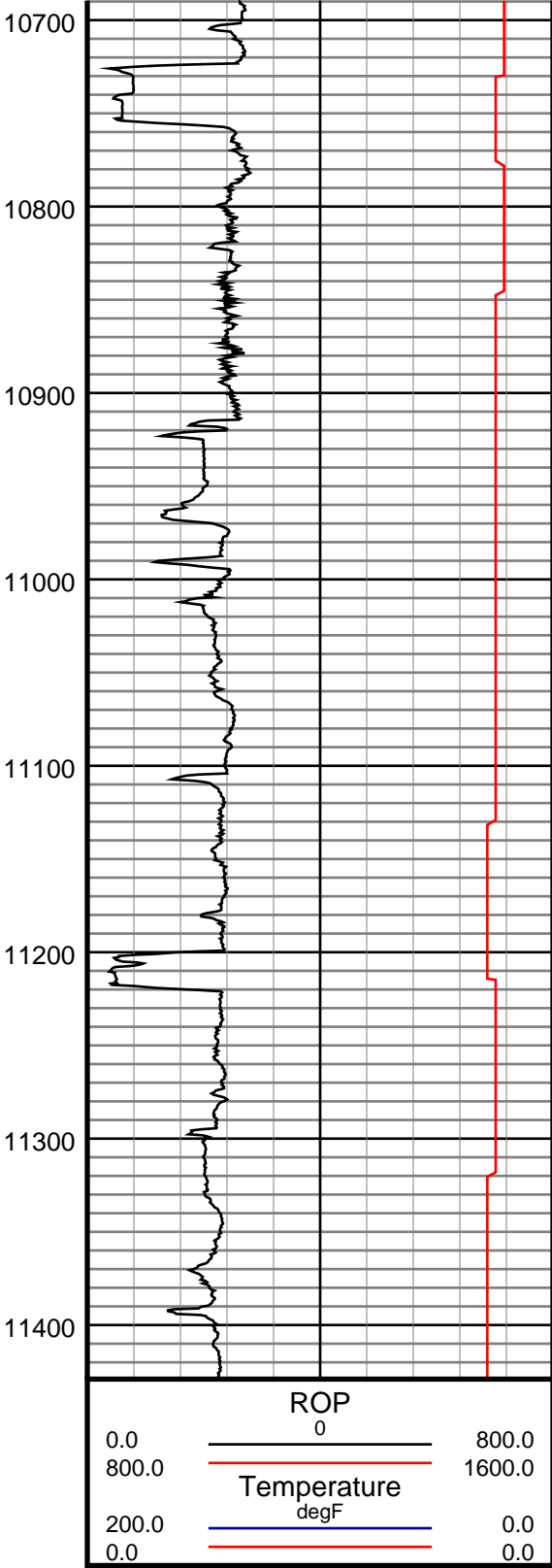
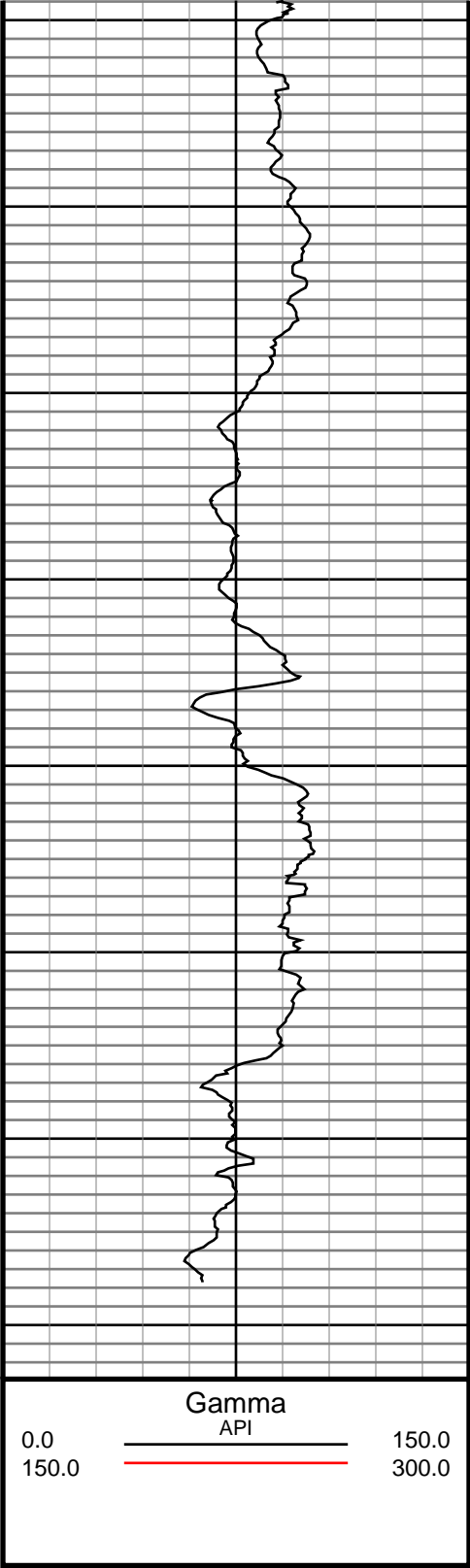
9500

9600



#96 MD(8561.00) Inc(88.8) Azm(359.3) TVD(6803.53) VS(1868.96) NS(1559.20) EW(1340.75) TEMP(129.2)
#97 MD(8657.00) Inc(90.0) Azm(359.8) TVD(6804.49) VS(1961.00) NS(1655.19) EW(1339.98) TEMP(129.2)
#98 MD(8752.00) Inc(88.0) Azm(358.6) TVD(6806.10) VS(2051.90) NS(1750.16) EW(1338.63) TEMP(129.2)
#99 MD(8847.00) Inc(88.0) Azm(359.0) TVD(6809.38) VS(2142.57) NS(1845.08) EW(1336.64) TEMP(129.2)
#100 MD(8942.00) Inc(87.8) Azm(358.6) TVD(6812.88) VS(2233.24) NS(1939.99) EW(1334.64) TEMP(129.2)
#101 MD(9037.00) Inc(87.8) Azm(358.9) TVD(6816.59) VS(2323.88) NS(2034.90) EW(1332.58) TEMP(129.2)
#102 MD(9132.00) Inc(90.4) Azm(358.1) TVD(6818.12) VS(2414.44) NS(2129.85) EW(1330.07) TEMP(129.2)
#103 MD(9227.00) Inc(90.6) Azm(357.6) TVD(6817.31) VS(2504.68) NS(2224.77) EW(1326.48) TEMP(129.2)
#104 MD(9322.00) Inc(90.7) Azm(357.2) TVD(6816.29) VS(2594.69) NS(2319.67) EW(1322.16) TEMP(129.2)
#105 MD(9418.00) Inc(90.8) Azm(357.4) TVD(6815.11) VS(2685.59) NS(2415.56) EW(1317.65) TEMP(129.2)
#106 MD(9513.00) Inc(88.8) Azm(357.9) TVD(6815.48) VS(2775.74) NS(2510.47) EW(1313.76) TEMP(129.2)
#107 MD(9608.00) Inc(89.0) Azm(357.7) TVD(6817.30) VS(2865.96) NS(2605.39) EW(1310.16) TEMP(129.2)





#119 MD(10750.00) Inc(89.6) Azm(358.9) TVD(6831.55)  
VS(3956.29) NS(3746.75) EW(1286.25) TEMP(129.2)

#120 MD(10845.00) Inc(90.1) Azm(358.4) TVD(6831.77)  
VS(4046.96) NS(3841.73) EW(1284.04) TEMP(129.2)

#121 MD(10940.00) Inc(90.2) Azm(358.4) TVD(6831.48)  
VS(4137.51) NS(3936.69) EW(1281.47) TEMP(129.2)

#122 MD(11035.00) Inc(89.5) Azm(357.6) TVD(6831.70)  
VS(4227.87) NS(4031.63) EW(1278.24) TEMP(129.2)

#123 MD(11130.00) Inc(89.1) Azm(357.2) TVD(6832.86)  
VS(4317.90) NS(4126.53) EW(1273.99) TEMP(129.2)

#124 MD(11225.00) Inc(89.7) Azm(357.2) TVD(6833.88)  
VS(4407.81) NS(4221.41) EW(1269.38) TEMP(129.2)

#125 MD(11321.00) Inc(89.6) Azm(356.3) TVD(6834.47)  
VS(4498.43) NS(4317.26) EW(1263.99) TEMP(129.2)

#126 MD(11359.00) Inc(89.7) Azm(356.4) TVD(6834.71)  
VS(4534.22) NS(4355.18) EW(1261.59) TEMP(129.2)