

**LEGEND:**

└─ = 90° SYMBOL

● = CENTER OF SWD INJECTION FACILITY PAD.

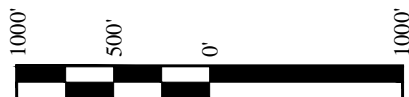
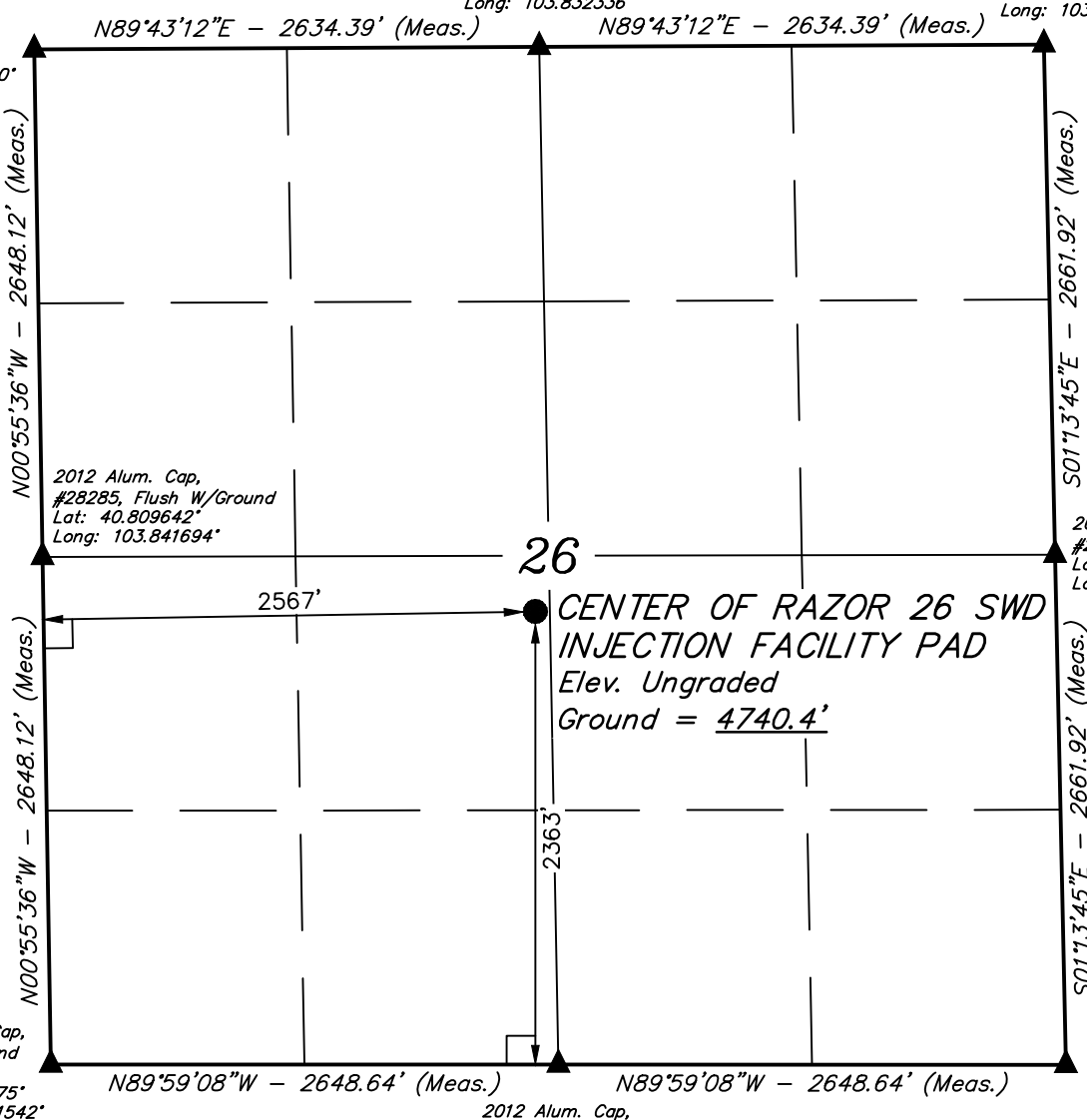
▲ = SECTION CORNERS LOCATED.

**T10N, R58W, 6th P.M.**

2012 Alum. Cap,  
#28285, 0.1' High  
Lat: 40.816942°  
Long: 103.832336°

2010 Alum. Cap,  
0.3' High  
Lat: 40.816975°  
Long: 103.822819°

2010 Alum. Cap,  
Flush W/Ground  
Lat: 40.816906°  
Long: 103.841850°



PDOP = 2.1

<b>NAD 83 (CENTER OF RAZOR 26 SWD INJECTION FACILITY PAD)</b>
LATITUDE = 40°48'31.89" (40.808858)
LONGITUDE = 103°49'56.66" (103.832406)
<b>NAD 27 (CENTER OF RAZOR 26 SWD INJECTION FACILITY PAD)</b>
LATITUDE = 40°48'31.94" (40.808872)
LONGITUDE = 103°49'54.86" (103.831906)

### BASIS OF BEARINGS

BASIS OF BEARINGS IS A G.P.S. OBSERVATION

### BASIS OF ELEVATION

SPOT ELEVATION LOCATED AT THE NORTHEAST CORNER OF SECTION 15, T9N, R58W, 6th P.M. TAKEN FROM THE GATEHOOK SPRING, QUADRANGLE, COLORADO, WELD COUNTY, 7.5 MINUTE QUAD (TOPOGRAPHIC MAP) PUBLISHED BY THE UNITED STATES DEPARTMENT OF THE INTERIOR, GEOLOGICAL SURVEY. SAID ELEVATION IS MARKED AS BEING 4679 FEET.



**UELS, LLC**  
Corporate Office \* 85 South 200 East  
Vernal, UT 84078 \* (435) 789-1017



### CERTIFICATE

THIS IS TO CERTIFY THAT THE ABOVE PLAT WAS PREPARED FROM FIELD NOTES OF ACTUAL SURVEYS MADE BY ME OR UNDER MY SUPERVISION AND THAT THE SAME ARE TRUE AND CORRECT TO THE BEST OF MY KNOWLEDGE AND BELIEF.

REGISTERED LAND SURVEYOR  
REGISTRATION NO. 28285  
STATE OF COLORADO

10-06-14

### WHITING OIL & GAS CORP.

**RAZOR 26 SWD INJECTION FACILITY**  
**NE 1/4 SW 1/4, SECTION 26, T10N, R58W, 6th P.M.**  
**WELD COUNTY, COLORADO**

SURVEYED BY: DALLAS NIELSEN, J.S.	DATE: 09-18-14
DRAWN BY: J.S.	DATE DRAWN: 09-22-14
SCALE: 1" = 1000'	REVISED: 10-06-14 J.W.
<b>WELL LOCATION PLAT</b>	