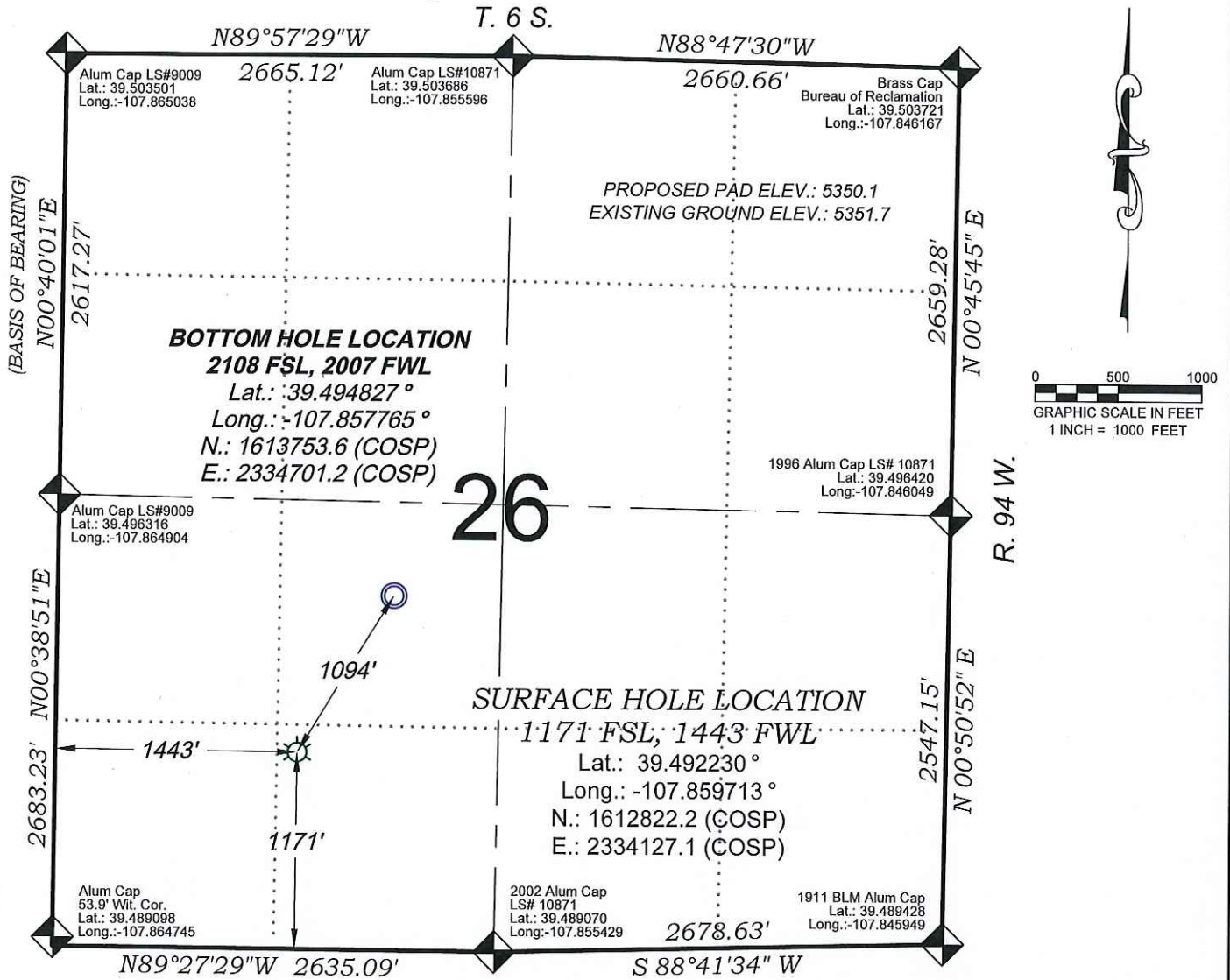


# Savage RWF 23-26



**BOTTOM HOLE LOCATION**  
 2108 FSL, 2007 FWL  
 Lat.: 39.494827°  
 Long.: -107.857765°  
 N.: 1613753.6 (COSP)  
 E.: 2334701.2 (COSP)

**26**

**SURFACE HOLE LOCATION**  
 1171 FSL, 1443 FWL  
 Lat.: 39.492230°  
 Long.: -107.859713°  
 N.: 1612822.2 (COSP)  
 E.: 2334127.1 (COSP)

SEE CONSTRUCTION LAYOUT  
 PLAT FOR VISIBLE IMPROVEMENTS  
 WITHIN 500' OF THIS LOCATION

## - LEGEND -

- FIELD LOCATED SECTION MONUMENTS AS DESCRIBED
- FIELD SURVEYED WELL LOCATION
- CALCULATED BOTTOM HOLE LOCATION
- CALCULATED SECTION CORNER LOCATION

### SURVEYORS STATEMENT

I, MICHAEL J. LANGHORNE, A REGISTERED LAND SURVEYOR IN THE STATE OF COLORADO DO HEREBY CERTIFY THAT THE SURVEY SHOWN HEREON WAS PREPARED UNDER MY DIRECT SUPERVISION AND HAS BEEN STAKED ON THE GROUND AS SHOWN ON THE PLAT AND CHECKING THAT THIS MAP IS A TRUE REPRESENTATION THEREOF.

*Michael J. Langhorne*

MICHAEL J. LANGHORNE, COLORADO REGISTRATION NO. 36572  
 FOR AND ON BEHALF OF  
 BOOKCLIFF SURVEY SERVICES, INC.

### REFERENCES

- 1) Original Survey and Dependent Resurvey & Survey of Tract 38, T. 7 S., R. 95 W., 6th P.M (GLO PLAT)
- 2) U.S.G.S. QUAD: North Mamm Peak, CO

REVISED: 7/30/14

SURVEY DATE:	4/23/08
MAP DATE:	7/17/14
SCALE:	1" = 1000'
PLAT:	1 of 1
PROJECT:	WPX Valley

### NOTES

- 1) ELEVATIONS BASED ON N.A.V.D. 1988 PUBLISHED COORDINATES.
- 2) LATITUDES AND LONGITUDES ARE BASE ON NAD 83, PUBLISHED COORDINATES
- 3) STATE PLANE COORDINATES ARE BASED ON COLORADO CENTRAL ZONE, U.S. SURVEY FEET.
- 4) ELEVATION MASK SET TO 15"
- 5) GPS OPERATOR J. KIRKPATRICK, OBSERVED A PDOP 1.3 ON SURVEY POINT NUMBER 203 (2009 WPX).
- 6) SURFACE AND BOTTOM HOLE LOCATIONS ARE MEASURED 90° FROM SECTION LINES.

**WELL LOCATION PLAT Prepared for:**  
**WPXENERGY.**

WPX Energy Rocky Mountain, LLC

SE1/4 SW1/4, SECTION 26  
 T. 6 S., R. 94 W. of the 6th. P.M.  
 GARFIELD COUNTY, COLORADO

136 East Third Street  
 Rifle, Colorado  
 81650 Ph. (970)  
 625-2720 Fax (970)  
 625-2773



**BOOKCLIFF**  
 Survey Services, Inc.