



Storis E24-79HN

MD
1" : 100'

Company: Noble Energy
Well Name: Storis E24-79HN
API: 05-123-38157
Rig Id: H&P 330
State: Colorado
County/Parish: Weld
Country: USA
Survey Company: Driltech LLC
Job number: 2014-159-IDDT-CO

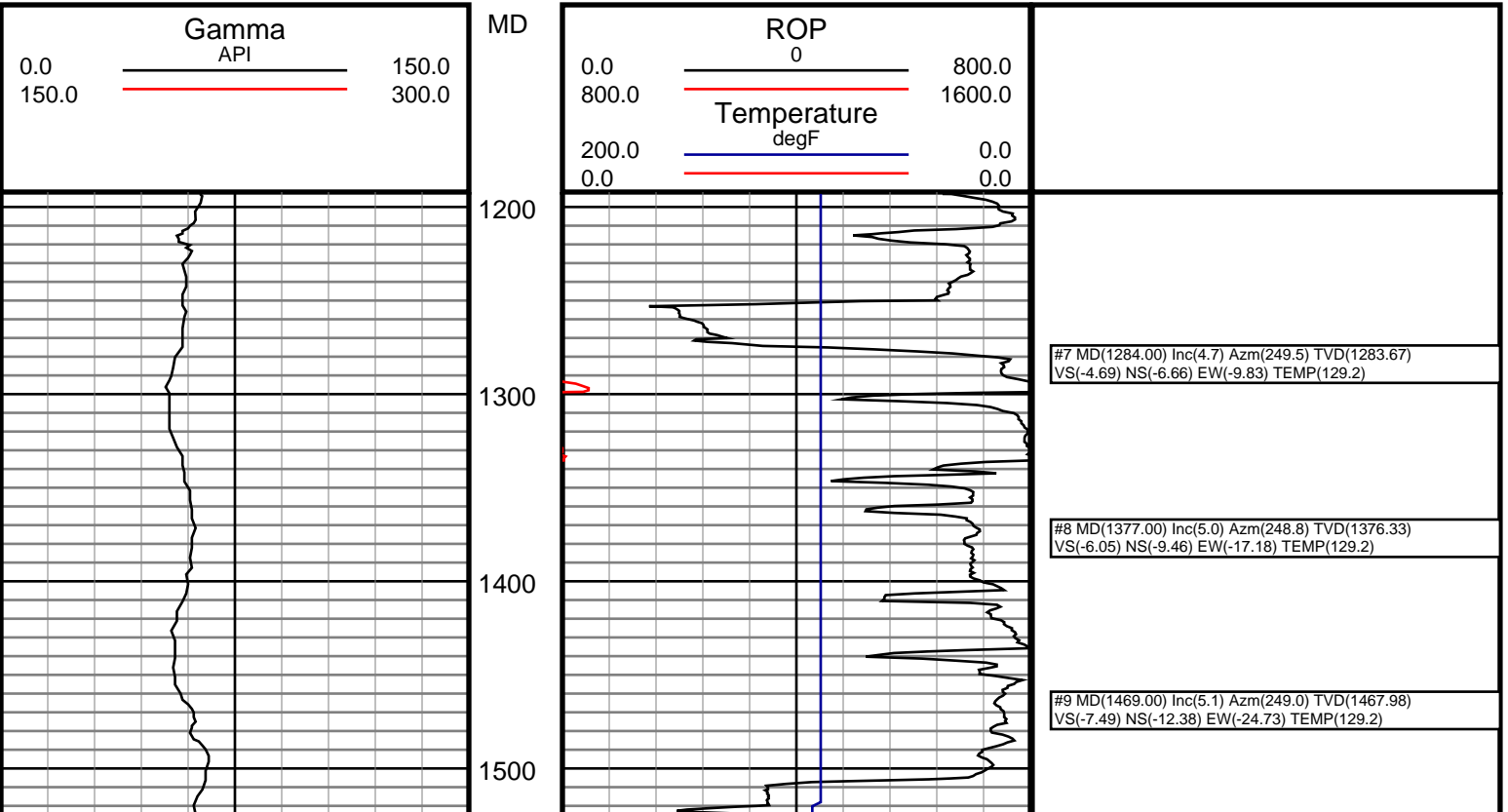
Log measurements: .5
Depth measured from: 755
Maximum temperature: 228.2

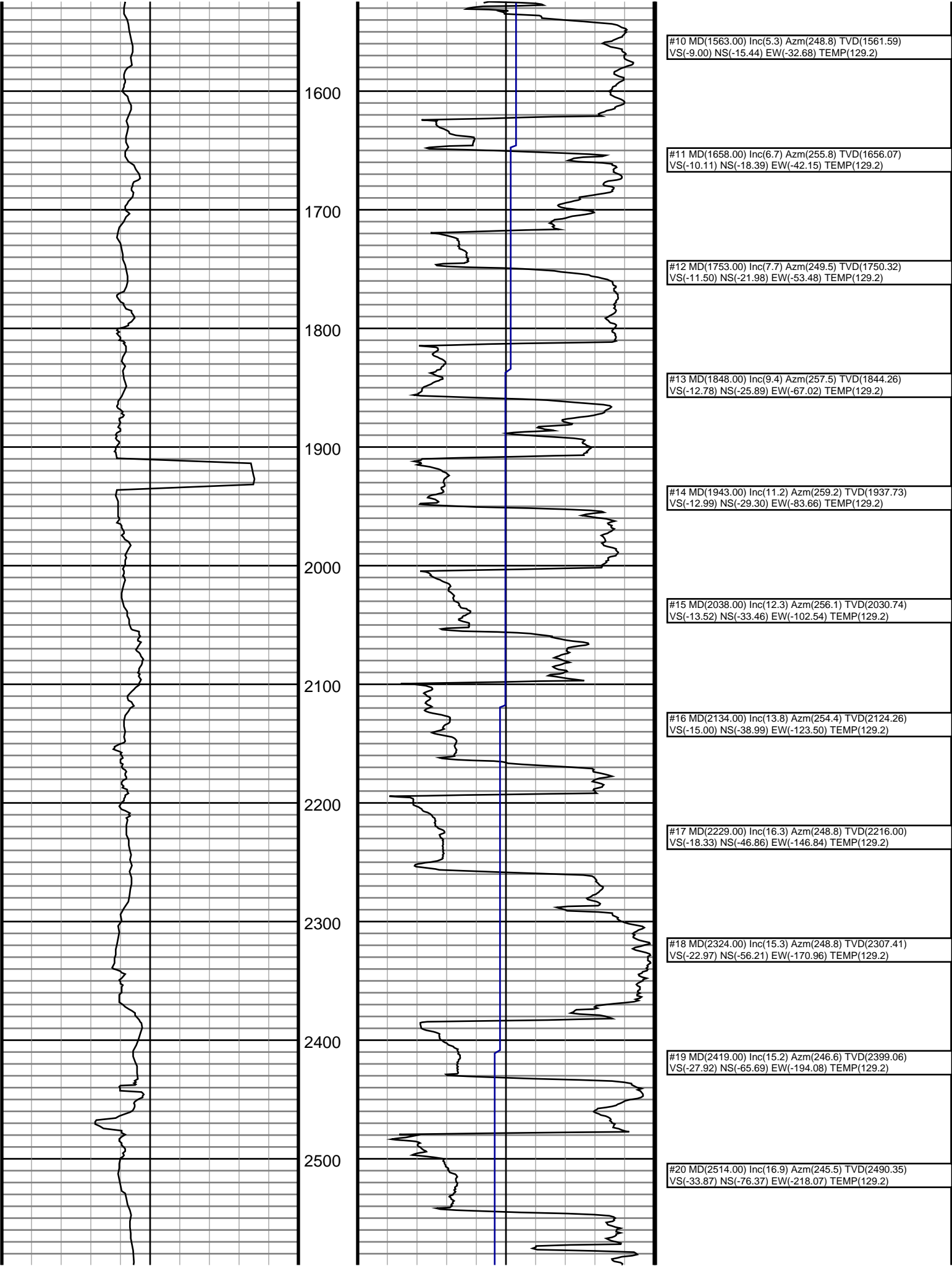
Depth Date
Start: 755 ft 4/17/14
End: 11523 ft 4/25/14

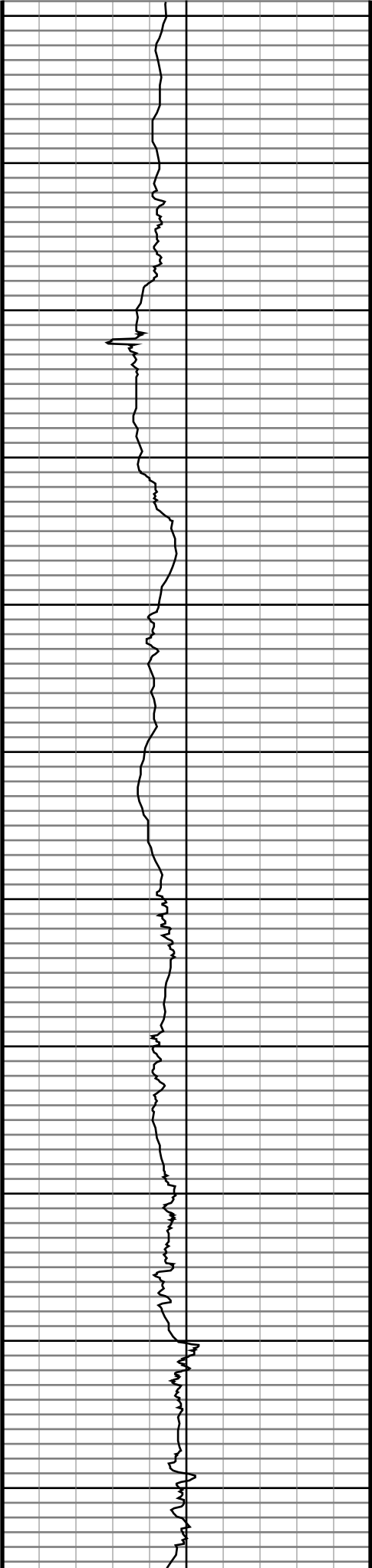
Casing Depth Size
Surface: 755 9 5/8
Intermediate: 7325 7
Mud Type: Water Base
Density: 9.3
Viscosity: 37
Rm: Rmf: Rmc:
Elevations
KB: 30
GL: 0
DF: 31

Run	Bit Size	Gamma	Offsets	Survey	Start	End	Start	End
1	8 3/4	43.00	59.00	755	6324	7357	4/18/14	4/20/14
2	8 3/4	46.00	62.00	6324	7357	11104	4/20/14	4/21/14
3	6 1/8	53.00	69.00	7357	11104	11523	4/22/14	4/24/14
4	6 1/8	53.00	69.00	11104	11523		4/24/14	4/25/14
5								
6								
7								
8								
9								
10								

Driltech LLC uses its best efforts to provide its customers with accurate information and interpretations in conjunction with services performed but will not be held liable or responsible for the accuracy of such information or interpretation.







2600

2700

2800

2900

3000

3100

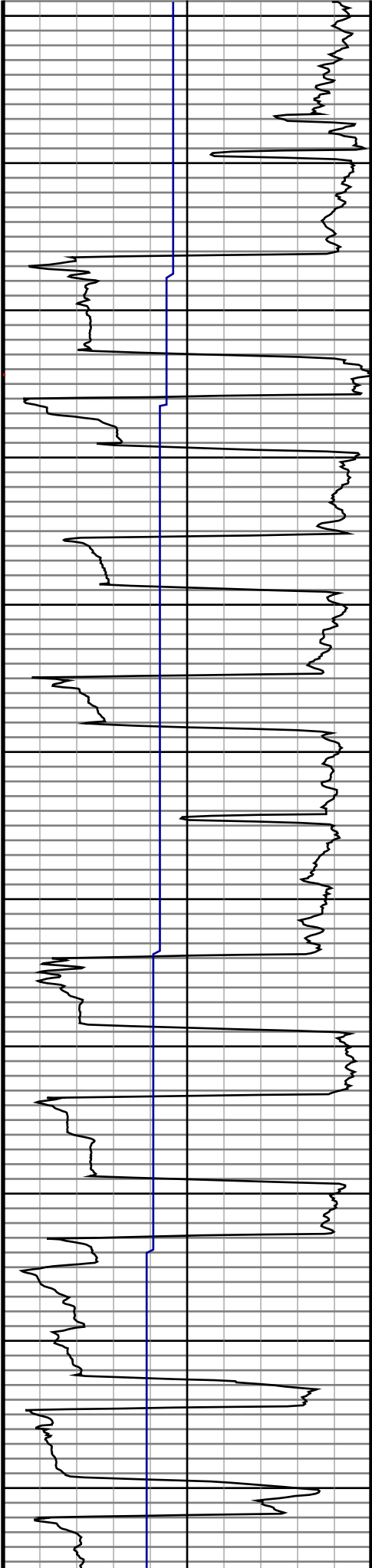
3200

3300

3400

3500

3600



#21 MD(2609.00) Inc(16.0) Azm(243.9) TVD(2581.47)
VS(-40.57) NS(-87.85) EW(-242.40) TEMP(129.2)

#22 MD(2704.00) Inc(14.6) Azm(243.6) TVD(2673.10)
VS(-47.21) NS(-98.94) EW(-264.88) TEMP(129.2)

#23 MD(2799.00) Inc(15.3) Azm(244.6) TVD(2764.88)
VS(-53.56) NS(-109.64) EW(-286.93) TEMP(129.2)

#24 MD(2894.00) Inc(18.1) Azm(245.1) TVD(2855.86)
VS(-60.29) NS(-121.23) EW(-311.64) TEMP(129.2)

#25 MD(2989.00) Inc(15.2) Azm(252.4) TVD(2946.88)
VS(-65.32) NS(-131.21) EW(-336.90) TEMP(129.2)

#26 MD(3085.00) Inc(15.9) Azm(255.4) TVD(3039.37)
VS(-67.65) NS(-138.33) EW(-361.63) TEMP(129.2)

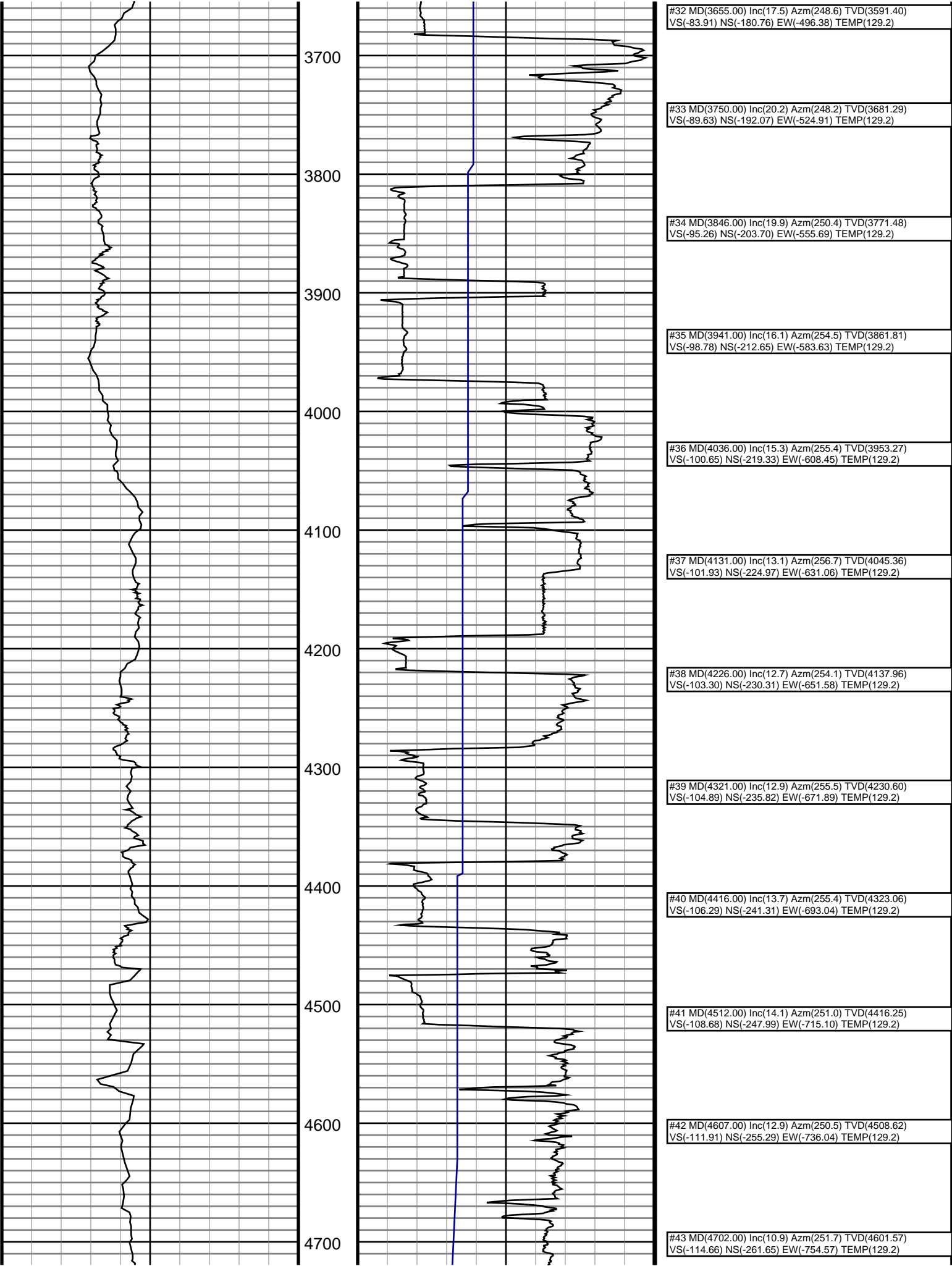
#27 MD(3180.00) Inc(14.4) Azm(255.3) TVD(3131.06)
VS(-69.29) NS(-144.61) EW(-385.65) TEMP(129.2)

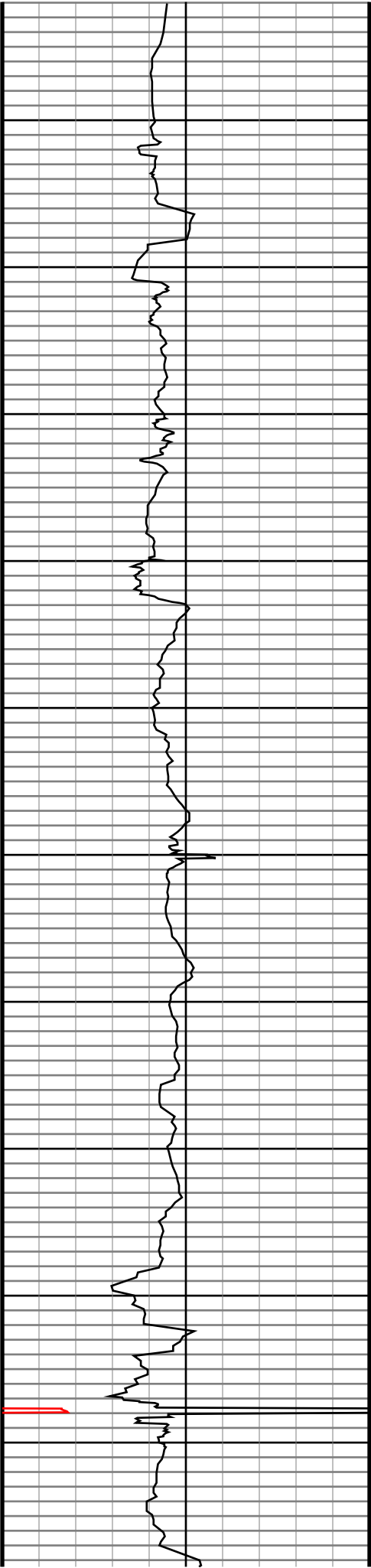
#28 MD(3275.00) Inc(13.0) Azm(253.9) TVD(3223.36)
VS(-71.05) NS(-150.57) EW(-407.34) TEMP(129.2)

#29 MD(3370.00) Inc(12.9) Azm(252.7) TVD(3315.94)
VS(-73.21) NS(-156.69) EW(-427.73) TEMP(129.2)

#30 MD(3465.00) Inc(13.5) Azm(252.4) TVD(3408.43)
VS(-75.70) NS(-163.19) EW(-448.42) TEMP(129.2)

#31 MD(3560.00) Inc(15.7) Azm(249.5) TVD(3500.36)
VS(-79.15) NS(-171.05) EW(-471.04) TEMP(129.2)





4800

4900

5000

5100

5200

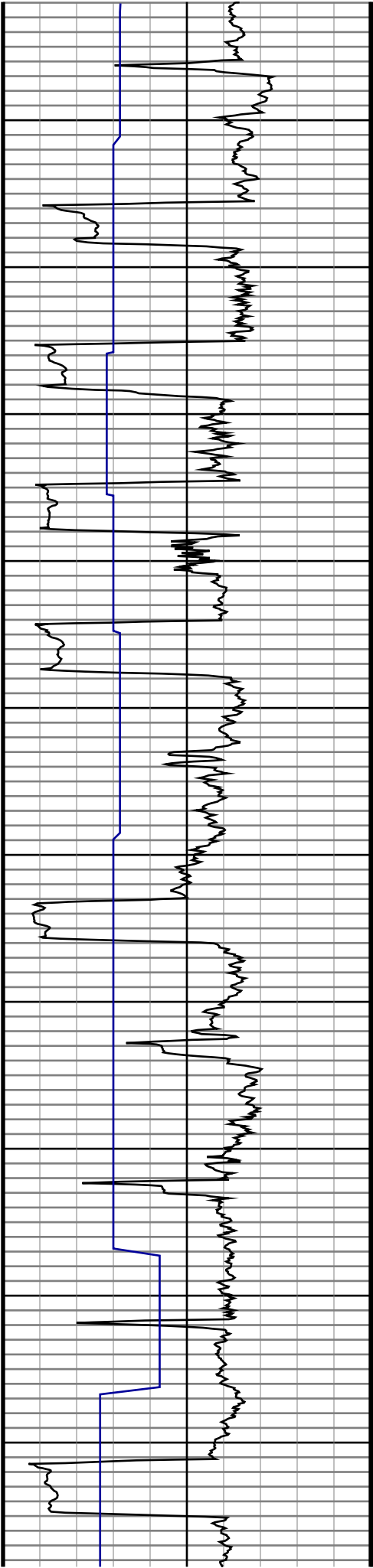
5300

5400

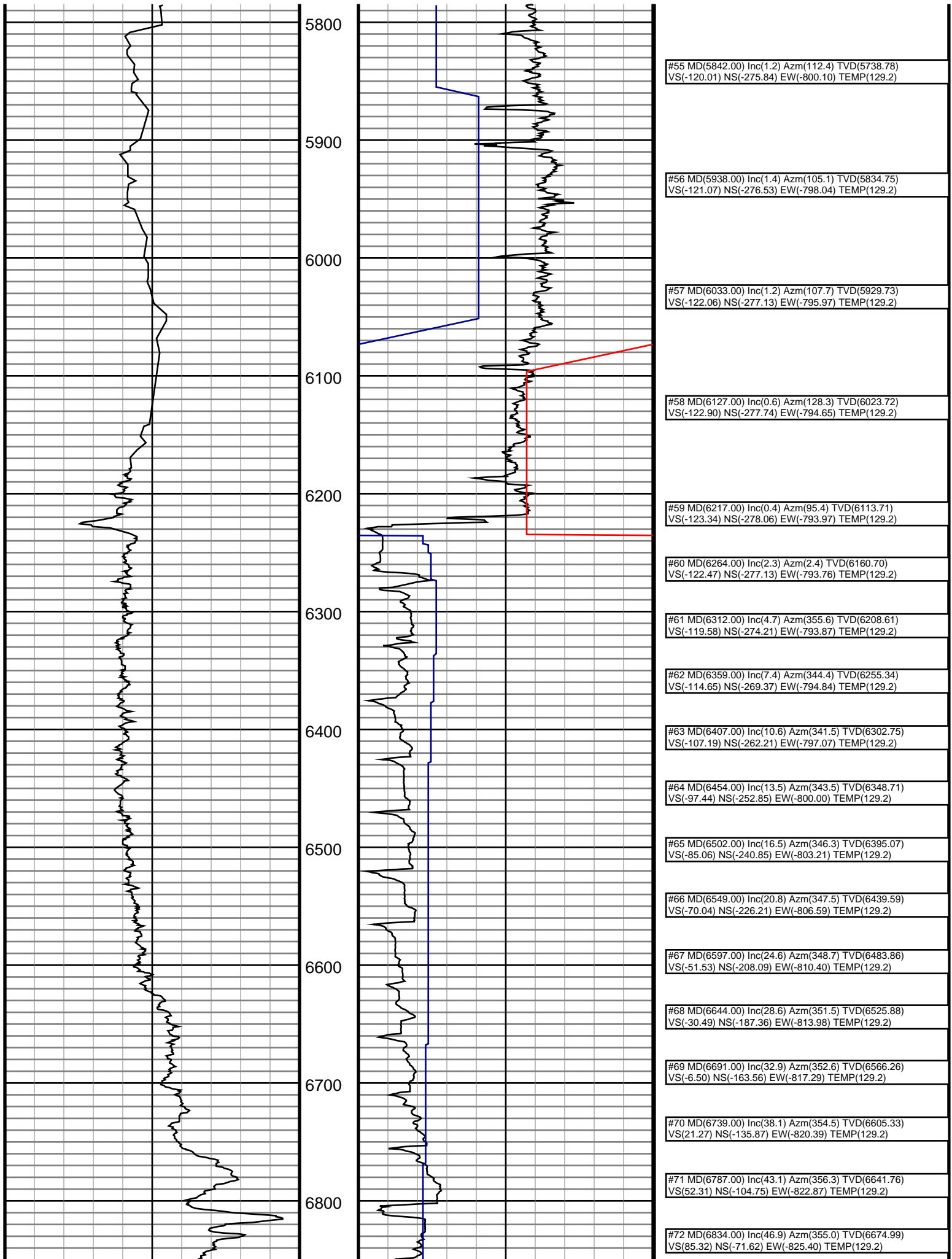
5500

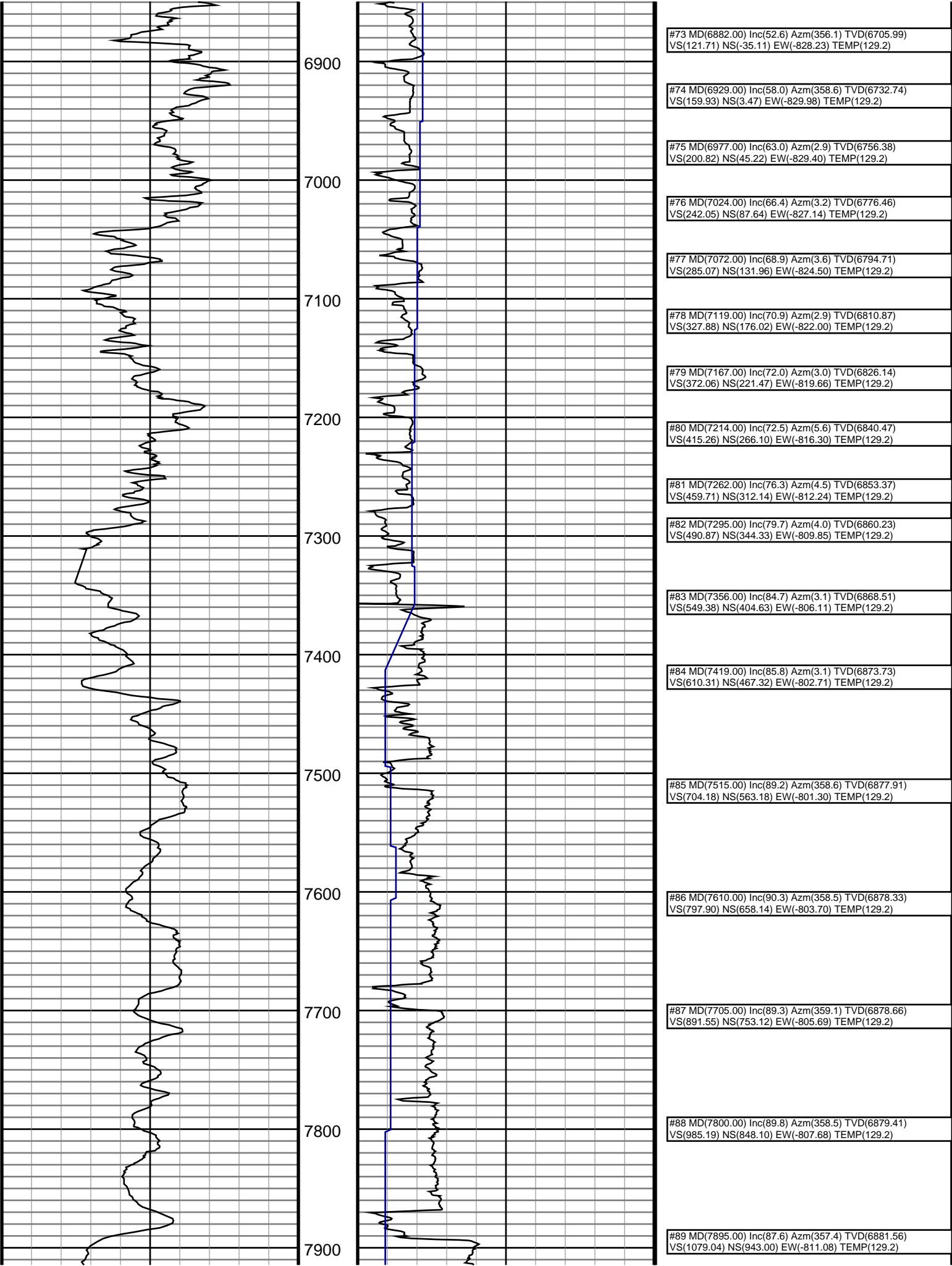
5600

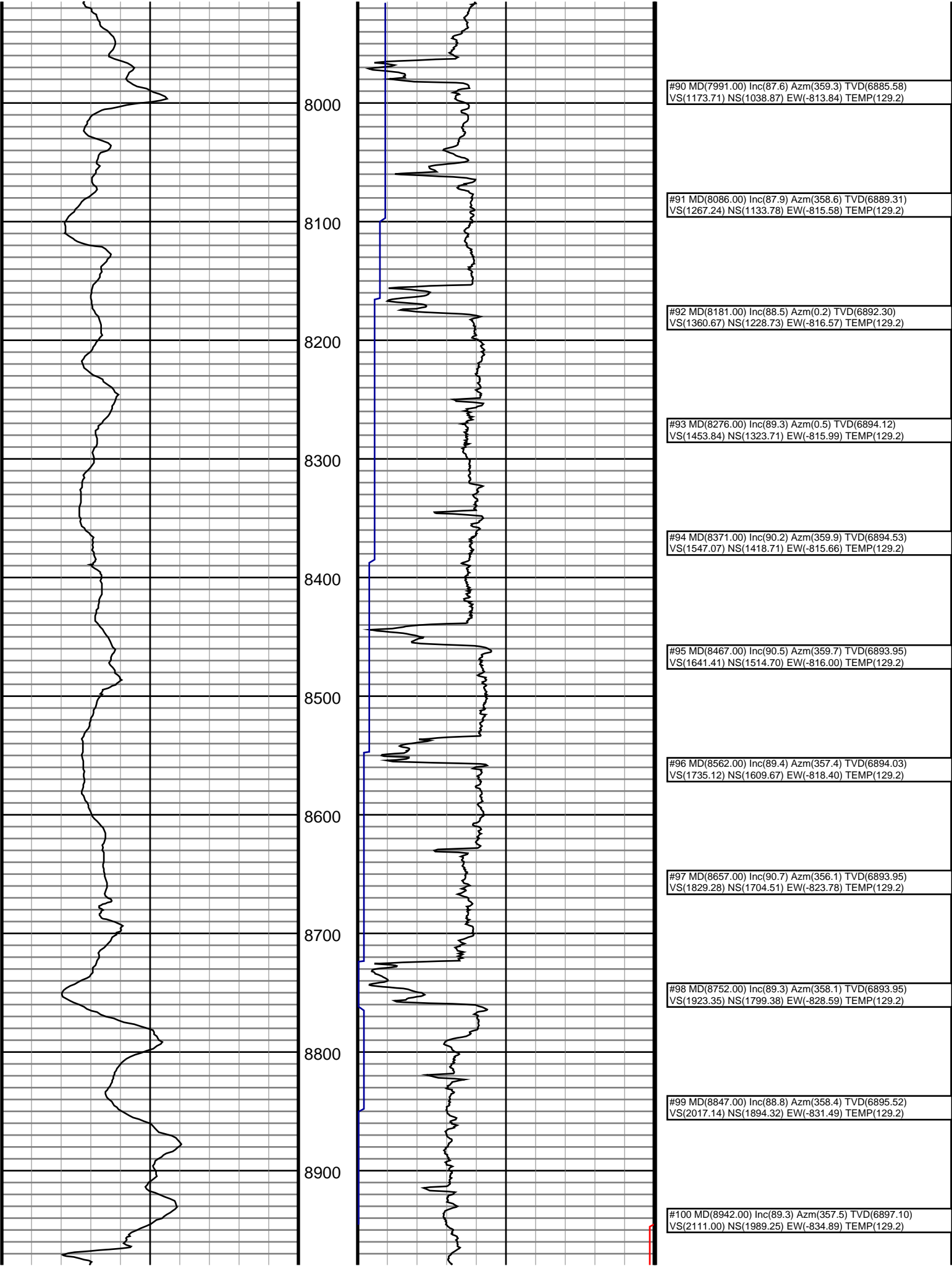
5700

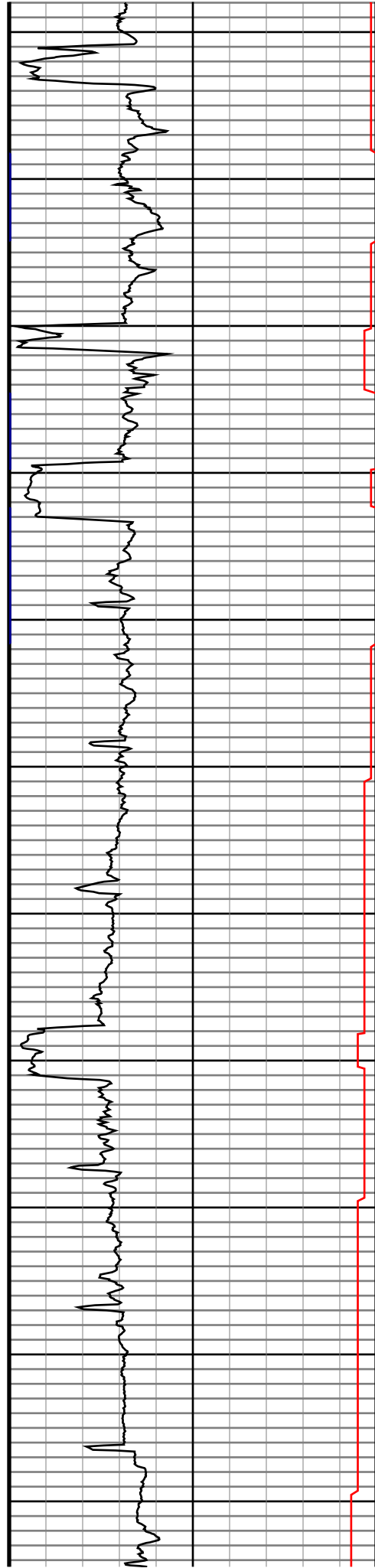
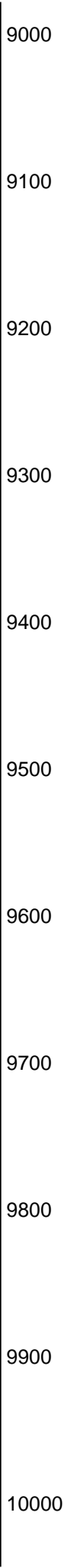
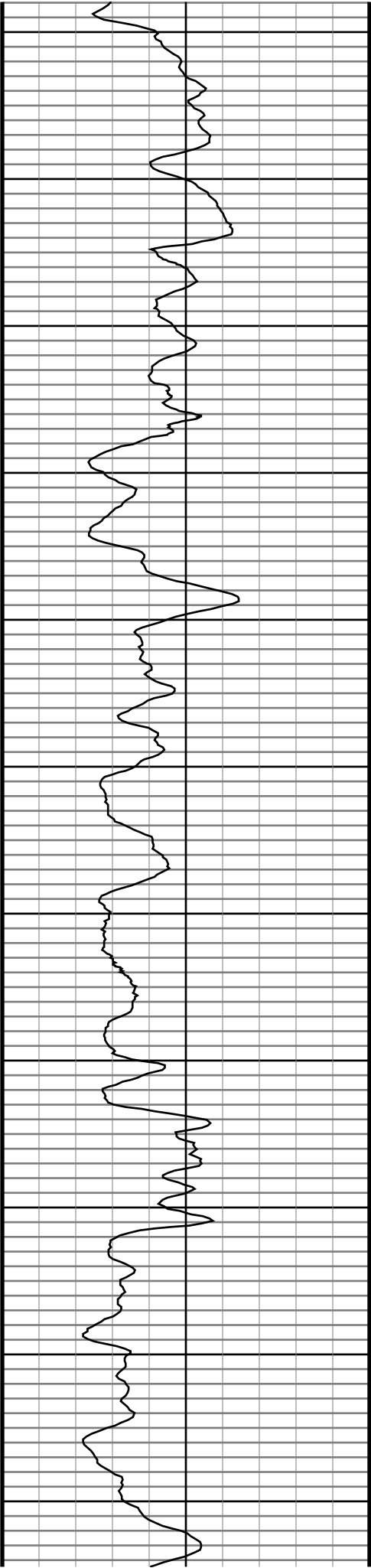


#44 MD(4797.00) Inc(8.3) Azm(250.9) TVD(4695.24) VS(-116.81) NS(-266.72) EW(-769.58) TEMP(129.2)
#45 MD(4892.00) Inc(6.2) Azm(251.9) TVD(4789.47) VS(-118.43) NS(-270.56) EW(-780.93) TEMP(129.2)
#46 MD(4987.00) Inc(4.4) Azm(242.4) TVD(4884.06) VS(-120.13) NS(-273.84) EW(-789.04) TEMP(129.2)
#47 MD(5083.00) Inc(2.4) Azm(244.2) TVD(4979.89) VS(-121.71) NS(-276.42) EW(-794.11) TEMP(129.2)
#48 MD(5178.00) Inc(0.9) Azm(257.8) TVD(5074.85) VS(-122.24) NS(-277.44) EW(-796.63) TEMP(129.2)
#49 MD(5273.00) Inc(1.1) Azm(253.9) TVD(5169.83) VS(-122.34) NS(-277.85) EW(-798.24) TEMP(129.2)
#50 MD(5368.00) Inc(0.3) Azm(251.1) TVD(5264.82) VS(-122.45) NS(-278.19) EW(-799.35) TEMP(129.2)
#51 MD(5463.00) Inc(0.4) Azm(276.3) TVD(5359.82) VS(-122.39) NS(-278.23) EW(-799.91) TEMP(129.2)
#52 MD(5558.00) Inc(0.7) Azm(300.2) TVD(5454.82) VS(-121.91) NS(-277.90) EW(-800.75) TEMP(129.2)
#53 MD(5652.00) Inc(1.4) Azm(331.5) TVD(5548.80) VS(-120.44) NS(-276.61) EW(-801.79) TEMP(129.2)
#54 MD(5747.00) Inc(0.8) Azm(84.6) TVD(5643.79) VS(-119.40) NS(-275.52) EW(-801.68) TEMP(129.2)









#101 MD(9038.00) Inc(89.6) Azm(359.6) TVD(6898.02)
VS(2205.69) NS(2085.21) EW(-837.32) TEMP(129.2)

#102 MD(9133.00) Inc(88.9) Azm(357.8) TVD(6899.26)
VS(2299.36) NS(2180.17) EW(-839.47) TEMP(129.2)

#103 MD(9228.00) Inc(89.1) Azm(357.8) TVD(6900.92)
VS(2393.26) NS(2275.08) EW(-843.12) TEMP(129.2)

#104 MD(9323.00) Inc(89.6) Azm(0.7) TVD(6902.00)
VS(2486.77) NS(2370.06) EW(-844.36) TEMP(129.2)

#105 MD(9418.00) Inc(90.4) Azm(1.2) TVD(6902.00)
VS(2579.75) NS(2465.05) EW(-842.79) TEMP(129.2)

#106 MD(9513.00) Inc(91.3) Azm(0.3) TVD(6900.59)
VS(2672.79) NS(2560.02) EW(-841.54) TEMP(129.2)

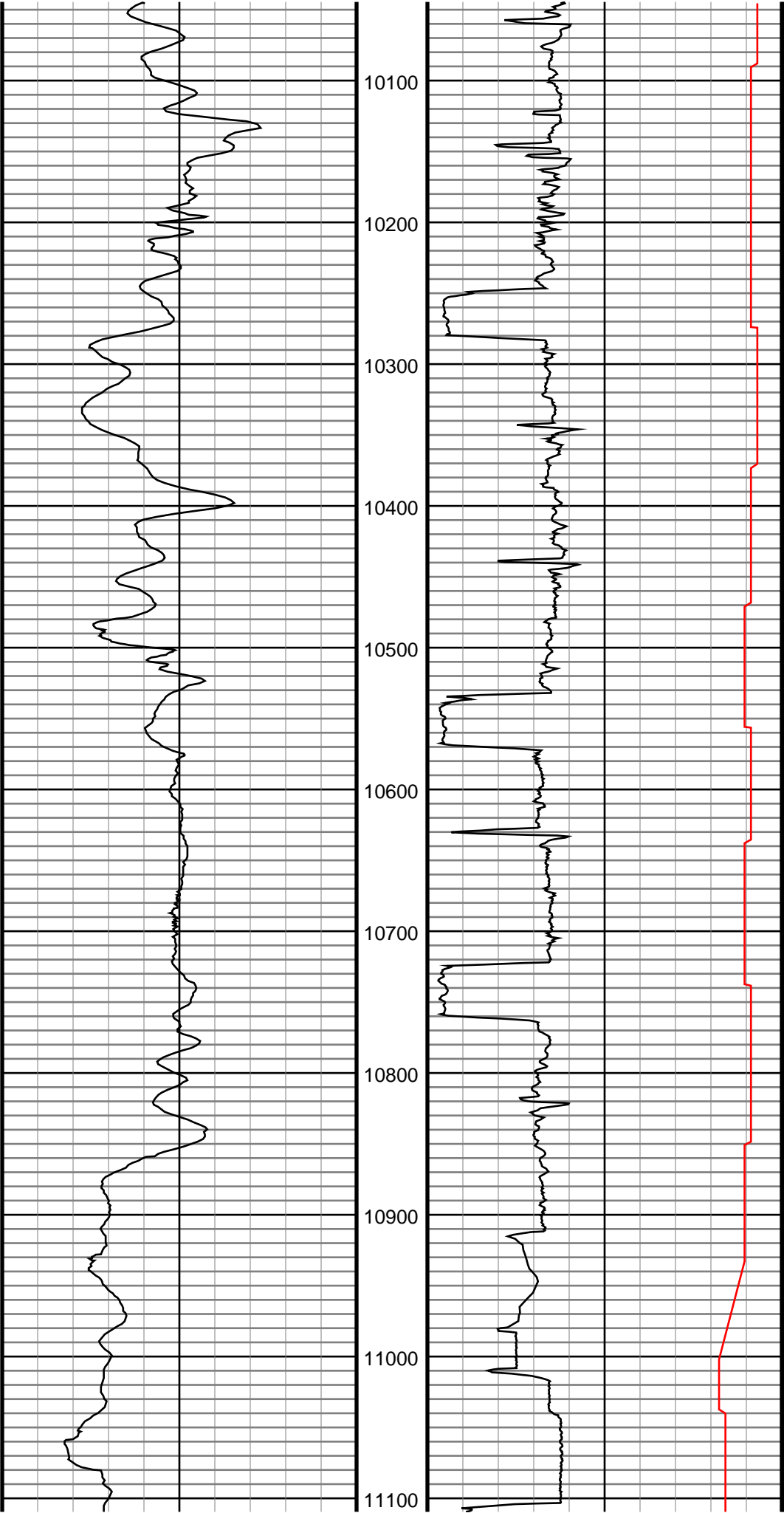
#107 MD(9608.00) Inc(91.9) Azm(359.5) TVD(6897.94)
VS(2766.08) NS(2654.99) EW(-841.71) TEMP(129.2)

#108 MD(9703.00) Inc(89.5) Azm(1.2) TVD(6896.78)
VS(2859.25) NS(2749.97) EW(-841.13) TEMP(129.2)

#109 MD(9799.00) Inc(88.9) Azm(0.0) TVD(6898.12)
VS(2953.32) NS(2845.95) EW(-840.12) TEMP(129.2)

#110 MD(9894.00) Inc(88.7) Azm(359.6) TVD(6900.11)
VS(3046.66) NS(2940.93) EW(-840.46) TEMP(129.2)

#111 MD(9989.00) Inc(89.1) Azm(358.7) TVD(6901.93)
VS(3140.19) NS(3035.90) EW(-841.86) TEMP(129.2)



#112 MD(10084.00) Inc(89.0) Azm(358.1) TVD(6903.51)
VS(3233.93) NS(3130.85) EW(-844.52) TEMP(129.2)

#113 MD(10179.00) Inc(87.8) Azm(356.8) TVD(6906.16)
VS(3327.89) NS(3225.71) EW(-848.74) TEMP(129.2)

#114 MD(10274.00) Inc(89.3) Azm(357.7) TVD(6908.56)
VS(3421.91) NS(3320.57) EW(-853.30) TEMP(129.2)

#115 MD(10369.00) Inc(89.9) Azm(356.8) TVD(6909.23)
VS(3515.95) NS(3415.46) EW(-857.86) TEMP(129.2)

#116 MD(10464.00) Inc(89.6) Azm(356.2) TVD(6909.64)
VS(3610.17) NS(3510.28) EW(-863.65) TEMP(129.2)

#117 MD(10560.00) Inc(91.9) Azm(358.4) TVD(6908.38)
VS(3705.17) NS(3606.15) EW(-868.18) TEMP(129.2)

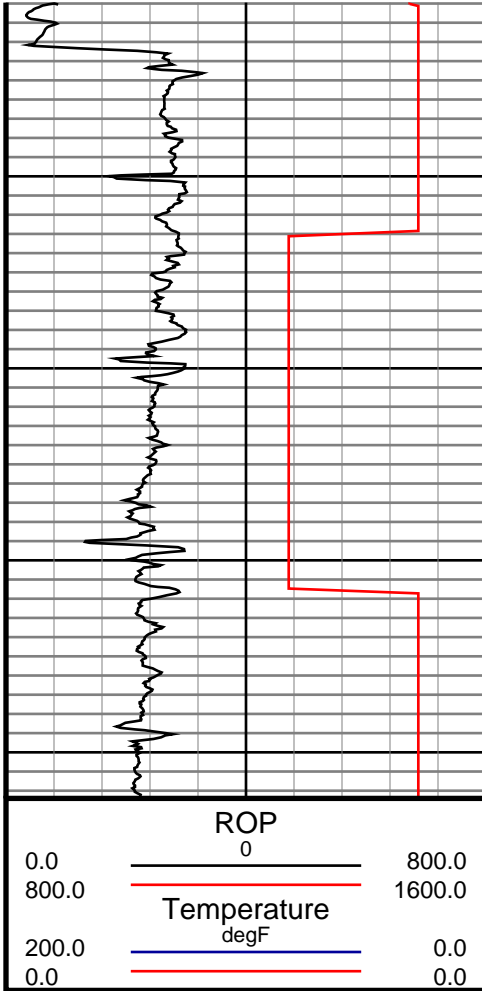
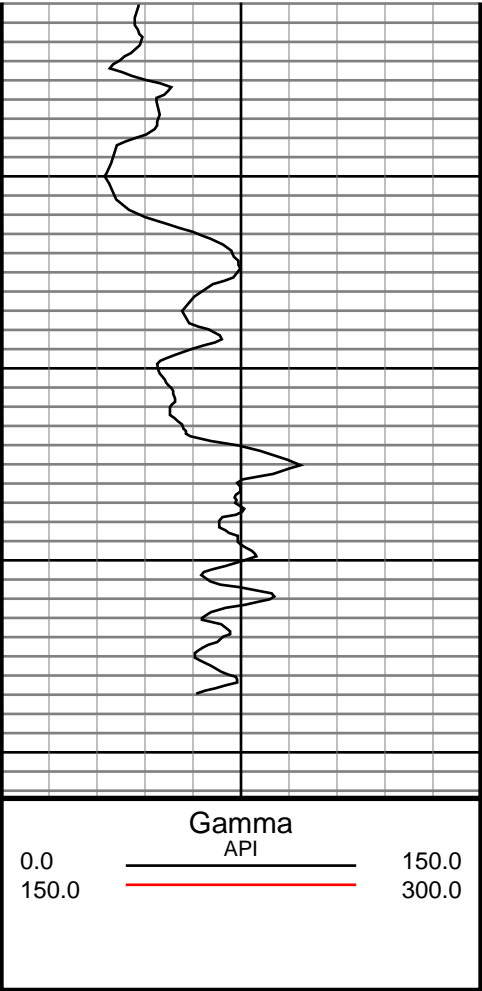
#118 MD(10655.00) Inc(93.3) Azm(359.2) TVD(6904.07)
VS(3798.72) NS(3701.03) EW(-870.16) TEMP(129.2)

#119 MD(10750.00) Inc(90.0) Azm(1.2) TVD(6901.34)
VS(3891.90) NS(3795.97) EW(-869.83) TEMP(129.2)

#120 MD(10845.00) Inc(89.5) Azm(359.7) TVD(6901.75)
VS(3985.05) NS(3890.97) EW(-869.09) TEMP(129.2)

#121 MD(10940.00) Inc(90.2) Azm(358.5) TVD(6902.00)
VS(4078.61) NS(3985.95) EW(-870.58) TEMP(129.2)

#122 MD(11035.00) Inc(90.5) Azm(357.8) TVD(6901.42)
VS(4172.43) NS(4080.90) EW(-873.64) TEMP(129.2)



#123 MD(11131.00) Inc(88.9) Azm(359.7) TVD(6901.92)
VS(4267.07) NS(4176.87) EW(-875.74) TEMP(129.2)

#124 MD(11226.00) Inc(89.2) Azm(358.6) TVD(6903.50)
VS(4360.61) NS(4271.84) EW(-877.15) TEMP(129.2)

#125 MD(11321.00) Inc(88.8) Azm(358.4) TVD(6905.16)
VS(4454.33) NS(4366.80) EW(-879.63) TEMP(129.2)

#126 MD(11416.00) Inc(87.5) Azm(356.9) TVD(6908.22)
VS(4548.22) NS(4461.66) EW(-883.53) TEMP(129.2)

#127 MD(11454.00) Inc(87.1) Azm(356.9) TVD(6910.01)
VS(4585.83) NS(4499.56) EW(-885.58) TEMP(129.2)